

House District 27

Senate District 13

THE TWENTY-SIXTH LEGISLATURE
HAWAII STATE LEGISLATURE
APPLICATION FOR GRANTS & SUBSIDIES
CHAPTER 42F, HAWAII REVISED STATUTES

Log No: 91-0

For Legislature's Use Only

Type of Grant or Subsidy Request:

GRANT REQUEST – OPERATING

GRANT REQUEST – CAPITAL

SUBSIDY REQUEST

"Grant" means an award of state funds by the legislature, by an appropriation to a specified recipient, to support the activities of the recipient and permit the community to benefit from those activities.

"Subsidy" means an award of state funds by the legislature, by an appropriation to a recipient specified in the appropriation, to reduce the costs incurred by the organization or individual in providing a service available to some or all members of the public.

"Recipient" means any organization or person receiving a grant or subsidy.

STATE DEPARTMENT OR AGENCY RELATED TO THIS REQUEST (LEAVE BLANK IF UNKNOWN):

STATE PROGRAM I.D. NO. (LEAVE BLANK IF UNKNOWN):

1. APPLICANT INFORMATION:

Legal Name of Requesting Organization or Individual:
The Children's Alliance of Hawaii, Inc.

Dba:

Street Address: 200 N. Vineyard Blvd., Suite 410
Honolulu, HI 96817

Mailing Address: Same as above

2. CONTACT PERSON FOR MATTERS INVOLVING THIS APPLICATION:

Name JOAN NAGUWA

Title President & Executive Director

Phone # 599-2955 x215

Fax # 599-5909

e-mail naguwa@cahawaii.org

3. TYPE OF BUSINESS ENTITY:

- NON PROFIT CORPORATION
- FOR PROFIT CORPORATION
- LIMITED LIABILITY COMPANY
- SOLE PROPRIETORSHIP/INDIVIDUAL

6. DESCRIPTIVE TITLE OF APPLICANT'S REQUEST:

PROGRAMS AND SERVICES FOR SEXUALLY ABUSED CHILDREN & YOUTH

4. FEDERAL TAX ID # [REDACTED]

5. STATE TAX ID #: [REDACTED]

7. AMOUNT OF STATE FUNDS REQUESTED:

FY 2012-2013: \$ 150,000.00

8. STATUS OF SERVICE DESCRIBED IN THIS REQUEST:

- NEW SERVICE (PRESENTLY DOES NOT EXIST)
- EXISTING SERVICE (PRESENTLY IN OPERATION)

SPECIFY THE AMOUNT BY SOURCES OF FUNDS AVAILABLE AT THE TIME OF THIS REQUEST:

STATE \$ 0

FEDERAL \$ 0

COUNTY \$ 0

PRIVATE/OTHER \$ 100,000.00

[REDACTED SIGNATURE]

JOAN I. NAGUWA, PRESIDENT & EXECUTIVE DIRECTOR
NAME & TITLE

01/31/12
DATE SIGNED

Application for Grants and Subsidies

I. Background and Summary

1. Description of The Children's Alliance of Hawaii, Inc.

The mission of The Children's Alliance of Hawaii, Inc.(CAH), a 501(c)(3) corporation, is to provide care and support for sexually abused children, offering hope for the future. Located in Honolulu, Hawaii, CAH serves nearly 600 sexually abused children, youth and their families on Oahu and Kauai as an integral agency in Hawaii's service system for abused children. CAH, formerly the Friends of the Children's Justice Center of Oahu, was incorporated in 1987 by the Rotary Club of Honolulu as the nonprofit fiscal and support partner agency to the State Judiciary's Children's Justice Center of Oahu (CJC). For over 23 years, CAH provided support funding and services, enhancement items (such as clothing, emergency foster care bags to children entering the foster care system, registration fees for sports activities, school uniforms, etc.) and volunteer support to the State Judiciary's Children's Justice Center of Oahu. In 2003, CAH continued to provide support services to the CJC and expanded programs to positively impact the healing process experienced by sexually abused children. In 2010, the formal partnership between the CJC and CAH was terminated.

Today, The Children's Alliance of Hawaii, Inc. continues to provide supportive services and programs to assist sexually abused children in their healing process, guiding them toward a successful transition to adulthood. These programs include:

- **Enhancements** – *providing goods and services for child victims and siblings that enhance the child's ability to regain a sense of normalcy and increase self-esteem and confidence. Goods and services include items such as clothing, prom attire, orthodontic dental care, computers for school, uniforms, sports registration fees, etc. Funds are provided by the Theresa F. Hughes Trust, Victoria S. and Bradley L. Geist Foundation, and other private foundations and individual contributions. Some pro bono services are provided when available by community volunteer professionals. Special projects, such as CAH's Christmas Angel Project and Back to School Project, are coordinated to provide holiday gifts and school supplies for these children and youth.*
- **HEART (Healing Emotions with Art and Recreation Together)** – *increasing child victims self-esteem and ability to express their feelings and emotions in a safe environment among peers who also have been sexually abused in small, supportive groups. This unique program, an important adjunct to traditional individual or group therapy, utilizes mediums that children can easily relate to, such as music and art, yoga, horseback riding, team and trust building activities, outdoor and cultural activities, and community service. All activities are designed to address the social and emotional needs of sexually abused children, and are based on a variety of therapeutic modalities, theoretical orientations and evidence-based best practices.*
- **Ho`omaka** – *enabling child victims to strengthen their resiliency by working with adult mentors with whom they build a safe and trusting relationship. In a positive one-on-one relationship,*

children develop skills in goal-setting, problem-solving, healthy relationship-building, independent living and conflict resolution and build on individual strengths and interests.

- **Strengthening Parents** – *providing parent support groups to enable parents to manage their own feelings about sexual abuse and to increase their parenting skills to strengthen their families.*

2. Goals And Objectives Related To The Request

Goal 1: To increase levels of self-esteem, self-efficacy and enhance the ability to express emotions among sexually abused children and youth through the use of mentoring and group social and recreational activities.

Objective 1: To provide therapeutic, recreation-based group programs for 35 sexually abused children.

Objective 2: To conduct 5, 7-week specialized activity sessions for sexually abused children.

Goal 2: To strengthen the resiliency of sexually abused children so they may make informed and healthy decisions for successful transition into adulthood.

Objective 1: To provide individual mentoring and teaming services to 15 children and youth.

Objective 2: To provide weekly one-on-one mentoring sessions to each youth, focusing on building healthy relationships, building on personal strengths and interests, identifying personal educational goals and formulating strategic plans.

Goal 3: To meet the immediate and long-term individual needs of sexually abused children and youth on Oahu and Kauai to enhance their sense of normalcy and increase their self worth.

Objective 1: To provide verifiably needed goods and services to 250 sexually abused children.

Objective 2: To provide school supplies and holiday gifts to 250 sexually abused children.

Goal 4: To assist custodial parents and caregivers of sexually abused children in building and maintaining positive, protective relationships with their children.

Objective 1: To convene and facilitate 12 parent/caregiver support group sessions.

Objective 2: To increase positive parenting skills of 10 parent/caregivers of sexually abused children.

3. Public Purpose And Need To Be Served

Child sexual abuse is a common experience for many children and is a public health problem in the United States (*Dominguez, Nelke, & Perry, 2002*). Each year, the Dept. of Human Services Child Welfare Division handles approximately 300 reported cases of sexual abuse in the State of Hawaii and 200 reported cases on the island of Oahu (*DHS/CWS*). Unfortunately, statistical data of sexual abuse incidents are usually inaccurate estimates due to underreporting (*Rutter, M. and Taylor, E., 2002*). Sexual abuse is underreported for various reasons: 1) children often do not disclose the sexual abuse to others. It is estimated that between 30 and 90 percent of all victims never tell that they have been sexually abused (*Bradley, A. and Wood, J., 1996, Forward, S., 1989*); 2) feelings of shame, guilt and responsibility by the child victim; 3) public negative stereotypes; 4) fear of retribution, retaliation and being blamed for any potential resulting family strife and separation; and 5) lack of services and/or accessibility to services (*Child Sex Abuse in Hawaii, 2008*).

A more realistic estimate is that one **out of three** females and **one out of five** males have been victims of sexual abuse in the United States before the age of 18 years (*Dominguez, Nelke, & Perry, 2002*). Child sex abuse occurs across all ethnic and socioeconomic groups, and causes significant trauma which may result in behavioral, social, cognitive, emotional and physical problems (*Dominguez, Nelke, & Perry 2002*). If left untreated, victims are at-risk for serious and sometimes life-threatening social problems, including early pregnancy, substance abuse, homelessness, low educational achievement, mental health disorders, unemployment, self-harm, suicide, and criminal activities (*Molnar, Buka, & Kessler, 2001; Noll, Trickett, & Putnam, 2003; Day, Thurlow, & Woolliscroft, 2003*). The Children's Alliance of Hawai'i has developed four unique programs (Enhancements, H.E.A.R.T., Ho'omaka, and Parent Strengthening) to assist children, youth and their families in their healing process and to help combat the above social problems.

CAH's programs assist sexually abused children and youth in enhancing their self esteem and ability to thrive through a Positive Youth Development approach. These programs are designed according to best practices in positive youth development and research on resiliency theory. Research suggests that Positive Youth Development programs have many positive impacts on youth, including reducing risky behaviors (such as promiscuity, substance use and abuse, truancy, dropping out of school, etc.) and increasing protective factors (such as feelings of community connectedness, high self-esteem, social competency skills, and having goals and plans for the future). Research on Resiliency Theory also shows that youth who have a consistent, supportive mentor in their life are more resilient and do better at developing healthy relationships, making healthy life and career choices and attaining independence. Finally, research also shows that children are better able to thrive when they have access to basic health, educational, recreational programs and activities.

Research also demonstrates that one of the key factors in the ability of sexually abused children to thrive after their trauma is supportive family or caregivers. Parents of child sex assault victims need to understand the dynamics of child sex abuse, manage their own feelings about the incident(s) and maintain open communication with their child to enable the child to heal from their trauma in a safe, nurturing environment.

4. Target Population To Be Served

The target population to be served through this project is sexually abused children, their siblings, and their families.

Specifically, CAH's Enhancements program serves sexually abused children and their eligible siblings (those who have either witnessed the sexual abuse or resided in the home while abuse occurred), ages 6 months old through 18 years old living on the island of Oahu. Also included are youth up to 21 years old who are in foster care and are still in high school. The Enhancements Program serves the same target population on the island of Kauai, and also includes children and youth who have experienced all types of abuse or neglect. These children are referred for Enhancements support by nonprofit social service agencies and government agencies, such as Dept. of Human Services or the City and County Prosecutor's office, on Oahu and Kauai.

CAH's HEART program serve sexually abused children, ages 9 years old to 18 years old, and the Ho`omaka program serves sexually abused youth, ages 9 years old to 21 years old. These children live in foster care settings or with a protective parent or primary caregiver. The Parent Strengthening program serves custodial parents and caregivers of sexually abused children.

Children and families come from all ethnic and socioeconomic backgrounds. Forty percent (40%) of children served are ethnically part-Hawaiian. Over 90% of children reside in households whose incomes are at or below the Federal poverty guidelines. The eligibility requirement for services is that a child has been sexually abused and/or is a sibling of a sexual abuse victim living in the home, and/or is currently in foster care or other DHS placement.

5. Geographic coverage:

The Children's Alliance of Hawaii, Inc. serves the islands of Oahu (all programs) and Kauai (Enhancements only).

II. Service Summary and Outcomes

1. Scope of Work, Tasks and Responsibilities & Project Annual Timeline

The following service outcomes will be met through this proposal:

- a. 80% of participants in CAH's programs will report increased self esteem and self efficacy.
- b. 80% of participants in CAH's HEART and Ho`omaka programs will report increased skills in effective and assertive communication.
- c. 80% of participants in CAH's HEART and Ho`omaka programs will report an increase in positive and supportive peer relationships.
- d. 70% of participants in CAH's Ho`omaka program will report success in establishing one or more life goals and implementing those goals.
- e. 90% of participants in CAH's Enhancement program will receive requested goods and services.
- f. 70% of participants in CAH's Strengthening Parents program will report an increase in empathy for their child.
- g. 70% of participants in CAH's Strengthening Parents program will report an increase in their communication skills and ability to support their child's healing.

The following tasks will be completed during the project year:

<u>Time Period</u>	<u>Project Activity</u>
Quarter 1	a. Plan, coordinate and conduct one 7-week social recreation activities component (e.g. therapeutic horseback riding, Hawaiian cultural activities, yoga or creative expression activity, etc.)
	b. Conduct client assessments, develop appropriate service plans and administer evaluation instruments to establish baseline data.
	c. Conduct structured reflection sessions with clients.
	d. Conduct a minimum of 6 one-hour individual sessions to set personal goals, assess progress and review service plans.
	e. Implement evidence-based curricula on goal setting as well as teen pregnancy and sexually transmitted infections prevention.
	f. Receive and process requests for enhancements goods and services.
	g. Facilitate 5 parent support groups.
	h. Prepare and submit required reports to contracting agency.
Quarter 2	a. Plan, coordinate and conduct two 7-week social recreation activities components (e.g. therapeutic horseback riding, Hawaiian cultural activities, yoga or creative expression activity, etc.)
	b. Conduct client assessments and develop appropriate service plans.
	c. Conduct structured reflection sessions with clients.

<u>Time Period</u>	<u>Project Activity</u>
Quarter 2	d. Conduct a minimum of 6 one-hour individual sessions to set personal goals, assess progress and review service plans.
	e. Implement evidence-based curricula on goal setting and strategic future planning.
	f. Receive and process requests for enhancements goods and services.
	g. Facilitate 5 parent support groups.
	h. Administer evaluation tools to monitor program impact on clients.
	i. Prepare and submit required reports to contracting agency.
Quarter 3	a. Plan, coordinate and conduct one 7-week social recreation activities component (e.g. therapeutic horseback riding, Hawaiian cultural activities, yoga or creative expression activity, etc.)
	b. Conduct client assessments and develop appropriate service plans.
	c. Conduct structured reflection sessions with clients.
	d. Conduct a minimum of 6 one-hour individual sessions to set personal goals, assess progress and review service plans.
	e. Implement evidence-based curricula on goal setting and strategic future planning.
	f. Receive and process requests for enhancements goods and services.
	g. Facilitate 5 parent support groups.
	h. Administer evaluation tools to monitor program impact on clients.
	i. Prepare and submit required reports to contracting agency.
Quarter 4	a. Plan, coordinate and conduct one 7-week social recreation activities component (e.g. therapeutic horseback riding, Hawaiian cultural activities, yoga or creative expression activity, etc.)
	b. Conduct client assessments and develop appropriate service plans.
	c. Conduct structured reflection sessions with clients.
	d. Conduct a minimum of 6 one-hour individual sessions to set personal goals, assess progress and review service plans.
	e. Implement evidence-based curricula on goal setting and strategic future planning.
	f. Receive and process requests for enhancements goods and services.
	g. Facilitate 5 parent support groups.

Time Period	Project Activity
	h. Administer evaluation tools to monitor program impact on clients.
	i. Prepare and submit required final reports to contracting agency.

3. Quality Assurance and Evaluation

Each child, family and/or group receiving services will complete a thorough intake and assessment process, as well as develop individual service plans to include goals and objectives. Individual, family and group charts will be maintained and regularly updated. Client chart review is a regular part of bi-weekly supervision with staff. It is used to maintain compliance to agency and best practices standards, to ensure program goals and objectives are being met, and to contribute to the development of staff skills and professionalism. Intake forms will collect individual and family demographic data, as well as a sexual behavior checklist to identify *at risk* youth. Pertinent family history and resource information will be gathered to identify those individuals and families most in need of services such as assistance with transportation, and to identify any potential blockages to full participation in program services.

Assessments will be completed by individual workers under the supervision of the Director of Programs, with regular individual and group supervision and case review. As a result of a comprehensive assessment, a thorough and relevant service plan will be developed to meet the individual, family and group goals and objectives. As with the assessment process, service plans will be reviewed and adjusted on a regular basis to meet changing needs, issues and developments which naturally occur with children and families. On a quarterly basis, client charts will be reviewed for compliance in accordance with case management standards.

4. Measures of Effectiveness

The following instruments will be used at the start (to set a base-line), middle (to gauge areas in need of adjustment), and post program (to the evaluate changes self-efficacy and self-esteem).

GSE – The General Self-Efficacy Scale

This is a revised and adapted GSE from Matthias Jerusalem & Ralf Schwazer GSE. The scale is designed for adolescent population and can be self-administered or proctored (verbally given). It has a final composite score of 40. Higher scores above baseline measures indicate stronger feelings of self-efficacy. The instrument will be used to gauge general movement in self-efficacy, and to assist program development and adjustment on a quarterly basis to ensure progress. All participants of the HEART and Ho`omaka programs will complete the scale at time of intake and

approximately every 8 weeks thereafter. It is suitable as an indicator of quality of life at any point in time (indicated by raise or fall in composite score). Because the original measure did not tap specific behavior change, it has been adapted for CAH to cover particular benchmarks for our population served (navigating health, relationships and behaviors), and is meant to be a general measure of those benchmarks. The instrument will be used as a pre, middle and post evaluative tool to gauge general movement in self efficacy, and to assist program development and adjustment on a quarterly basis to ensure progress.

RSE - Rosenberg Self Esteem Scale

This is a self-report survey with scores ranging from 0-30. Higher scores indicate higher self-esteem, and lower scores indicate lower self-esteem. There are no distinct ranges, and scores between 15 and 25 suggest a normal level of self-esteem. Scores below 15 suggest low self-esteem. The scale includes 10 items scored from strongly agree to strongly disagree. This instrument will be used to gauge general movement in self-esteem, and to assist program development and adjustment on a quarterly basis to ensure progress. All participants of the HEART and Ho`omaka programs will complete the scale at time of intake and approximately every 8 weeks thereafter. (Rosenberg, Morris. 1989. Society and The Adolescent Self-Image. Revised edition. Middletown, CT: Wesleyan University Press)

Both of the above measures are research validated tools with high reliability and validity.

Positive Youth Development Scale

This scale is a 20 item Likert scale designed to measure the effectiveness of Positive Youth Development programs. It is a post-only measure, completed by all participants approximately every 3 months. It was developed based on outcome measurement recommendations made by the Hawaii State Dept. of Human Services for programs utilizing positive youth development approaches. Youth self-report on whether they gained new skills, feel more connected to their community, made new positive peer relationships, and feel more confident in a variety of areas as a result of participating in the program.

III. Financial

1. Budget

See attached budget forms.

2. Anticipated quarterly funding requests for the fiscal year 2012-2013.

Quarter 1	Quarter 2	Quarter 3	Quarter 4	Total Grant
\$37,500	\$37,500	\$37,500	\$37,500	\$150,000

3. Other Funding Sources for FY 2012-2013

Private Foundations:

Hawaii Community Foundation, Geist Foundation
Bank of Hawaii, Theresa Hughes Trust
Atherton Family Foundation
Friends of Hawaii Charities/Sony Open
NFL Charities
Hawaii Community Foundation
Other local and national foundations

Individual/Corporate Donors

IV. Experience and Capability

A. Necessary Skills and Experience

The Children's Alliance of Hawaii, Inc. has provided supportive programs for sexually abused children, youth and their families for nearly 25 years. CAH has an extensive volunteer program and strong community partnership network which include nonprofit organizations, such as Hale O'pio, YWCA of Kauai, Catholic Charities of Hawaii, Child and Family Service, Joyful Heart Foundation, government entities, such as the City Prosecutor's Office, Dept. of Human Services, Dept. of Health, Dept. of Education, and educational institutions, such as University of Hawaii, Chaminade University and Hawaii Pacific University. Community volunteers include public and private schools, for-profit businesses and small businesses, Rotary Clubs and other community organizations. These volunteers and partners enable us to provide necessary services and programs for sexually abused children on Oahu and Kauai.

The CAH President/Executive Director has over 30 years of nonprofit management experience as well as legislative/government contract management experience at CAH and other nonprofit organizations. The CAH Board of Directors Program Committee works directly with staff to ensure that the highest program standards are maintained. This Committee includes a licensed pediatrician and child psychiatrist with 13 years in active medical practice and a director of a large nonprofit educational organization with over 15 years in managing federal and state contracts. The CAH Board Treasurer is actively involved in oversight of CAH's financial matters.

CAH's Director of Programs position is currently vacant with expectations to hire as soon as possible. This candidate will be a licensed clinical social worker or licensed marriage and family therapist with five or more years of experience working with at-risk and/or sexually abused children in a therapeutic setting. In addition, this candidate will have a minimum of 3 or more years of program and

fiscal management experience. Currently, program staff and student interns are being supervised on a weekly basis by a contracted licensed marriage and family therapist with over 15 years of direct clinical work with sexually abused children and their parents.

The CAH Program Managers include one staff with a Masters of Social Work and another with a Masters of Marriage and Family Therapy. Both have 4 years of practical experience working directly with sexually abused children and youth. CAH's Enhancements Coordinator has 4 years experience in facilitating and fulfilling requests for goods and services from public and private agencies on Oahu and Kauai. The program staff is assisted by two graduate student level interns in Social Work and Marriage and Family Therapy under the close supervision of program staff.

The following is a list of contracts, both private and public, which support CAH's skills and experience pertinent to this request:

Dept. of Health – CAMHD, HEART Program Contract #06-032
Dept. of Health – CAMHD, Ho`omaka Program Contract #08-017
Hawaii State Legislature – The Judiciary, Grant in Aid, J08127
Hawaii State Legislature – The Judiciary, Grant in Aid, J09039
Hawaii State Legislature – The Judiciary, Grant in Aid, J11184
Hawaii Community Foundation, Geist Foundation, PIN Grant/Enhancements:
2000-2012
Bank of Hawaii, Theresa Hughes Trust, PIN Grant/Enhancements: 2000 - 2012

B. Facilities

Our offices (6,816 sq. ft.) are located on the 4th floor of the Castle & Cooke Community Service Center on N. Vineyard Blvd. The building and our offices meet ADA compliance standards. Our program services are primarily conducted in our office premises or at community sites on Oahu.

V. Personnel: Project Organization and Staffing

A. Proposed Staffing, Staff Qualifications, Supervision and Training

See Section IV-A above.

B. Organization Chart

See Attachment A.

VI. Other

A. Litigation

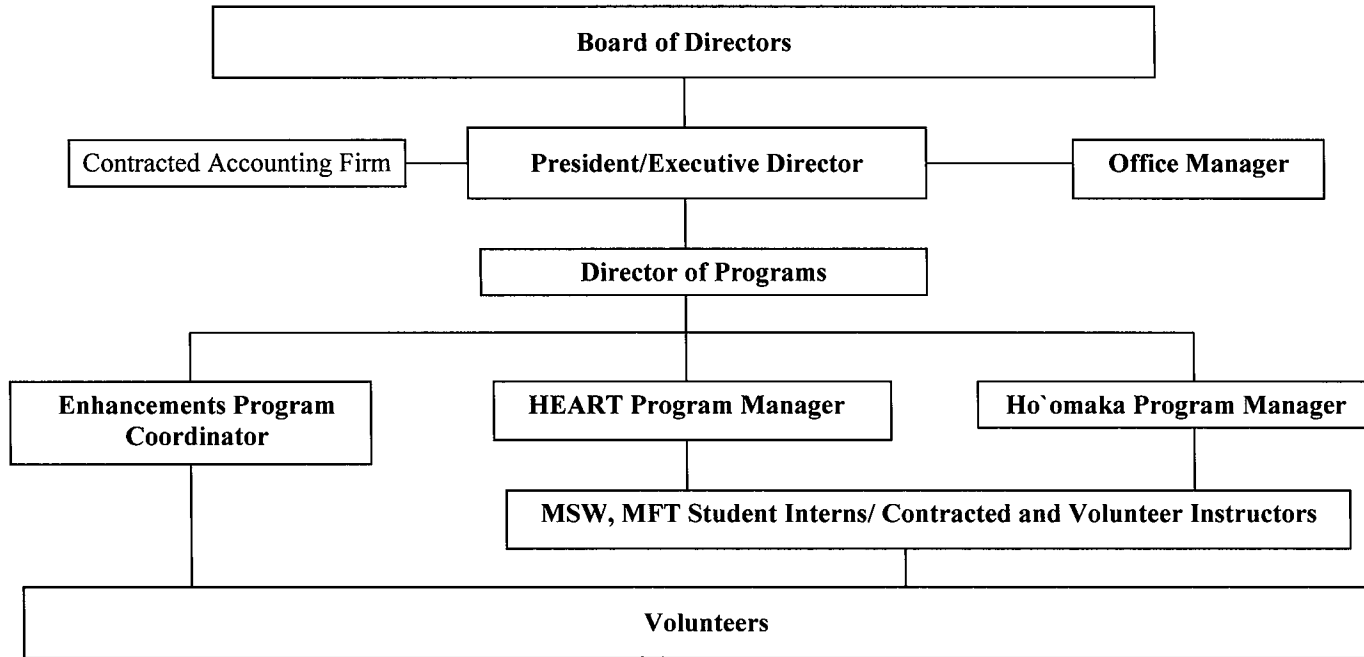
No pending litigation.

B. Licensure or Accreditation

Not applicable.

ATTACHMENT A

**The Children's Alliance of Hawaii, Inc.
Organization Chart**



BUDGET REQUEST BY SOURCE OF FUNDS
(Period: July 1, 2012 to June 30, 2013)

Applicant: The Children's Alliance of Hawaii, Inc.

BUDGET CATEGORIES	Total State Funds Requested (a)	Other Funds (b)	(c)	(d)
A. PERSONNEL COST				
1. Salaries	91,100	117,300		
2. Payroll Taxes & Assessments	12,500	8,495		
3. Fringe Benefits	14,000	14,750		
TOTAL PERSONNEL COST	117,600	140,545		
B. OTHER CURRENT EXPENSES				
1. Airfare, Inter-Island	0	0		
2. Insurance	1,000	3,000		
3. Lease/Rental of Equipment	1,300	4,225		
4. Lease/Rental of Space	15,000	47,400		
5. Staff Training	1,500	6,150		
6. Supplies	2,000	6,375		
7. Telecommunication	800	2,475		
8. Utilities	0	0		
9. Accounting & Auditing	6,300	19,200		
10. Postage	600	1,950		
11. Printing	900	2,800		
12. Staff Mileage	1,100	2,300		
13. Phone	900	2,700		
14. Payroll fees	1,000	7,950		
15				
16				
17				
18				
19				
20				
TOTAL OTHER CURRENT EXPENSES	32,400	106,525		
C. EQUIPMENT PURCHASES				
D. MOTOR VEHICLE PURCHASES				
E. CAPITAL				
TOTAL (A+B+C+D+E)	150,000	247,070		
SOURCES OF FUNDING		Budget Prepared By:		
(a) Total State Funds Requested	150,000	Joan I. Naguwa	599-2955 x215	Phone
(b) Trusts & Foundations	125,000	[REDACTED]		
(c) Individual & Corporate Contrib.	122,070			Jan. 31, 2012
(d)				Date
TOTAL BUDGET	397,070	Name and Title (Please type or print)		

BUDGET JUSTIFICATION PERSONNEL - SALARIES AND WAGES

Applicant: The Children's Alliance of Hawaii, Inc.

Period: July 1, 2012 to June 30, 2013

POSITION TITLE	FULL TIME EQUIVALENT	ANNUAL SALARY A	% OF TIME ALLOCATED TO GRANT REQUEST B	TOTAL STATE FUNDS REQUESTED (A x B)
Director of Programs	1	\$62,000.00	30.00%	\$ 18,600.00
HEART Program Manager	0.8	\$40,000.00	60.00%	\$ 24,000.00
Ho`omaka Program Manager	1	\$50,000.00	60.00%	\$ 30,000.00
Enhancements Coordinator	0.75	\$37,000.00	50.00%	\$ 18,500.00
				\$ -
				\$ -
				\$ -
				\$ -
				\$ -
				\$ -
				\$ -
				\$ -
				\$ -
				\$ -
				\$ -
TOTAL:				91,100.00
JUSTIFICATION/COMMENTS: These positions are critical to the successful implementation of the proposed project.				

BUDGET JUSTIFICATION - EQUIPMENT AND MOTOR VEHICLES

Applicant: The Children's Alliance of Hawaii, Inc. Period: July 1, 2011 to June 30, 2012

DESCRIPTION EQUIPMENT	NO. OF ITEMS	COST PER ITEM	TOTAL COST	TOTAL BUDGETED
			\$ -	
			\$ -	
			\$ -	
			\$ -	
			\$ -	
TOTAL:				
JUSTIFICATION/COMMENTS:				

DESCRIPTION OF MOTOR VEHICLE	NO. OF VEHICLES	COST PER VEHICLE	TOTAL COST	TOTAL BUDGETED
			\$ -	
			\$ -	
			\$ -	
			\$ -	
			\$ -	
TOTAL:				
JUSTIFICATION/COMMENTS:				

BUDGET JUSTIFICATION CAPITAL PROJECT DETAILS

Applicant: The Children's Alliance of Hawaii, Inc

Period: July 1, 2012 to June 30, 2013

FUNDING AMOUNT REQUESTED						
TOTAL PROJECT COST	ALL SOURCES OF FUNDS RECEIVED IN PRIOR YEARS		STATE FUNDS REQUESTED	OF FUNDS REQUESTED	FUNDING REQUIRED IN SUCCEEDING YEARS	
	FY: 2010-2011	FY: 2011-2012	FY:2012-2013	FY:2012-2013	FY:2013-2014	FY:2014-2015
PLANS						
LAND ACQUISITION						
DESIGN						
CONSTRUCTION						
EQUIPMENT						
TOTAL:						
JUSTIFICATION/COMMENTS:						

**DECLARATION STATEMENT
APPLICANTS FOR GRANTS AND SUBSIDIES
CHAPTER 42F, HAWAII REVISIED STATUTES**

The undersigned authorized representative of the applicant acknowledges that said applicant meets and will comply with all of the following standards for the award of grants and subsidies pursuant to section 42F-103, Hawaii Revised Statutes:

- (1) Is licensed or accredited, in accordance with federal, state, or county statutes, rules, or ordinances, to conduct the activities or provide the services for which a grant or subsidy is awarded;
- (2) Comply with all applicable federal and state laws prohibiting discrimination against any person on the basis of race, color, national origin, religion, creed, sex, age, sexual orientation, or disability;
- (3) Agree not to use state funds for entertainment or lobbying activities; and
- (4) Allow the state agency to which funds for the grant or subsidy were appropriated for expenditure, legislative committees and their staff, and the auditor full access to their records, reports, files, and other related documents and information for purposes of monitoring, measuring the effectiveness, and ensuring the proper expenditure of the grant or subsidy.

In addition, a grant or subsidy may be made to an organization only if the organization:

- (1) Is incorporated under the laws of the State; and
- (2) Has bylaws or policies that describe the manner in which the activities or services for which a grant or subsidy is awarded shall be conducted or provided.

Further, a grant or subsidy may be awarded to a non-profit organization only if the organization:

- (1) Has been determined and designated to be a non-profit organization by the Internal Revenue Service; and
- (2) Has a governing board whose members have no material conflict of interest and serve without compensation.

For a grant or subsidy used for the acquisition of land, when the organization discontinues the activities or services on the land acquired for which the grant or subsidy was awarded and disposes of the land in fee simple or by lease, the organization shall negotiate with the expending agency for a lump sum or installment repayment to the State of the amount of the grant or subsidy used for the acquisition of the land.

Further, the undersigned authorized representative certifies that this statement is true and correct to the best of the applicant's knowledge.

The Children's Alliance of Hawaii, Inc.
(Typed Name of Individual or Organization)



Joan I. Naguwa
(Typed Name)

January 30, 2012
(Date)

President & Executive Director
(Title)