

House District 42nd

Senate District 20th

**THE TWENTY-SIXTH LEGISLATURE  
HAWAII STATE LEGISLATURE  
APPLICATION FOR GRANTS & SUBSIDIES  
CHAPTER 42F, HAWAII REVISED STATUTES**

Log No: 88-C

For Legislature's Use Only

Type of Grant or Subsidy Request:

GRANT REQUEST – OPERATING

GRANT REQUEST – CAPITAL

SUBSIDY REQUEST

"Grant" means an award of state funds by the legislature, by an appropriation to a specified recipient, to support the activities of the recipient and permit the community to benefit from those activities.

"Subsidy" means an award of state funds by the legislature, by an appropriation to a recipient specified in the appropriation, to reduce the costs incurred by the organization or individual in providing a service available to some or all members of the public.

"Recipient" means any organization or person receiving a grant or subsidy.

STATE DEPARTMENT OR AGENCY RELATED TO THIS REQUEST (LEAVE BLANK IF UNKNOWN): \_\_\_\_\_

STATE PROGRAM I.D. NO. (LEAVE BLANK IF UNKNOWN): \_\_\_\_\_

**1. APPLICANT INFORMATION:**

Legal Name of Requesting Organization or Individual:  
Sutter Health Pacific

Dbas: Kāhi Mōhala

Street Address: 91-2301 Old Fort Weaver Road, Ewa Beach, HI 96706

Mailing Address: same

**2. CONTACT PERSON FOR MATTERS INVOLVING THIS APPLICATION:**

Name Leonard Ličina

Title Chief Executive Officer

Phone # 677-2503

Fax # 677-2570

e-mail licinal@kahi.org

**3. TYPE OF BUSINESS ENTITY:**

- NON PROFIT CORPORATION
- FOR PROFIT CORPORATION
- LIMITED LIABILITY COMPANY
- SOLE PROPRIETORSHIP/INDIVIDUAL

**6. DESCRIPTIVE TITLE OF APPLICANT'S REQUEST:**

Hospital Admissions Area Renovation

4. FEDERAL TAX ID #: \_\_\_\_\_

5. STATE TAX ID #: \_\_\_\_\_

**7. AMOUNT OF STATE FUNDS REQUESTED:**

FY 2012-2013: \$ 125,000

**8. STATUS OF SERVICE DESCRIBED IN THIS REQUEST:**

- NEW SERVICE (PRESENTLY DOES NOT EXIST)
- EXISTING SERVICE (PRESENTLY IN OPERATION)

SPECIFY THE AMOUNT BY SOURCES OF FUNDS AVAILABLE AT THE TIME OF THIS REQUEST:

STATE \$ 0  
 FEDERAL \$ 0  
 COUNTY \$ 0  
 PRIVATE/OTHER \$ 0

TYPE NAME & TITLE OF AUTHORIZED REPRESENTATIVE

Leonard Ličina, Chief Executive Officer  
NAME & TITLE

1-30-12  
DATE SIGNED

## Application for Grants and Subsidies

*If any item is not applicable to the request, the applicant should enter "not applicable".*

### I. Background and Summary

This section shall clearly and concisely summarize and highlight the contents of the request in such a way as to provide the State Legislature with a broad understanding of the request. Include the following:

1. **A brief description of the applicant's background;**

Established in 1983, Kāhi Mōhala's campus style 88-bed licensed facility remains Hawai'i's only freestanding, **not-for-profit** psychiatric hospital. Located in a park-like setting in Ewa Beach, the buildings and grounds offer a complete therapeutic environment with an emphasis on patient safety and security. For the past 28 years, Kāhi Mōhala has provided thousands of residents of Hawai'i and referrals from around the Pacific Rim with quality behavioral health care. If it were not for the presence of Kāhi Mōhala in West O'ahu, children, adolescents and adults with serious mental health challenges would not receive the specialized health care they need in their own community.

Kāhi Mōhala provides therapeutic inpatient programs for children, adolescents and adults who are in need of acute care, as well as for those who require case management for a longer period of time. Annually the hospital serves between 1,200 and 1,500 patients from O'ahu and those referred from the Neighbor Islands, including Maui County, Kaua'i and the Big Island, where behavioral health care services are practically non-existent.

Kāhi Mōhala is dedicated to caring for people in need by providing innovative, quality and effective behavioral health services. The heart of Kāhi Mōhala's philosophy of care is to improve the overall quality of life for our patients. Comprehensive treatment programs incorporate cognitive-behavioral techniques that include individual, group and family-centered approaches to therapy. Ultimately, our hospital's treatment programs will result in greater accessibility to enhanced behavioral health care services throughout our community.

2. **The goals and objectives related to the request;**

Kāhi Mōhala Behavioral Health seeks the Legislature's partnership to improve our hospital's vital services for children, adolescents, and adults with a one-year Grant-in-Aid Request for \$125,000. This critical support will ensure that Kāhi Mōhala has the resources necessary to renovate and upgrade the hospital Admissions area, located in the *Lehua* building.

Annually, as many as 1,500 patients, caregivers, medical professionals and visitors utilize this area, which is the “gateway” to receiving acute care and to accessing all other hospital services.

The project goal is to improve the Admissions area’s functionality, efficiency and comfort for patients, visitors and all facility users by creating a more secure, spacious and welcoming environment at the hospital's entry point. The project results will be defined by a newly designed, readily identifiable exterior hospital entrance to that clearly leads to the expanded and upgraded interior Admissions service area. These improvements will create increased accessibility for all patients who come to the facility with serious psychiatric emergencies and disorders.

Kāhi Mōhala’s campus consists of five buildings, including *Lehua*, and one modular unit for a total of 64,000 square feet. The buildings and grounds have been in continuous use for 28 years and require significant capital improvements to modernize and upgrade the facilities.

The *Lehua* building currently functions as the hospital entry, admissions area, and PBX office for intake. The Admissions area occupies a section of the *Lehua* building, which also houses *Lehua A*, our 16-bed acute adult unit and *Lehua B*, an 8-bed acute unit for children, adjacent to the Admissions and intake section. A major renovation of *Lehua A* is in process, with completion expected by July 2012, thanks to support from community donors and federal CDBG funding through the City & County of Honolulu.

Patients are often admitted to Kāhi Mōhala in crisis, and the family members who accompany them are often stressed and disoriented by the emergency medical situation. The Admissions area gives patients’ their first impression of the hospital, as it does for medical specialists, accreditation teams, government officials, community friends, and other visitors.

***The environmental standard of the physical plant is inextricably linked to the hospital’s ability to provide quality health care services for our patients. Well-maintained, effective and efficient treatment facilities, which comply with state and national hospital accreditation standards, are critical for the hospital to deliver the level of care for our patients, consistent with our program service goals.***

The Admissions area renovation is the hospital’s 2012-2013 capital improvement priority to insure that the highest level of quality service delivery consistent with the hospital’s mission is available to all patients in need. The Admissions area’s functionality is limited by constraints in space, privacy, traffic flow, signage and weather protection. For example, patients seeking admission and visitors check in at the exterior PBX Call Center window, before walking around the building to the unit entry and the small hallway that functions as the waiting area. The exam and intake rooms are co-located, but there is no privacy in the waiting area nor a co-located restroom for those awaiting services.

**3. State the public purpose and need to be served;**

Kāhi Mōhala plays a critical role in the statewide safety net by caring for patients when they become so dangerous to themselves and threatening to others that acute care is required. Kāhi Mōhala provides effective behavioral health care to stabilize patients and graduate them to transitional programs that support mainstream independent living in the community.

*In the process, Kāhi Mōhala's health care services and programs save taxpayers hundreds of thousands of dollars in lessening the need for chronic institutionalization.*

Kāhi Mōhala has a proud history of working with the State Department of Health (DOH) to ensure that the state has the capacity to serve its most seriously mentally ill patients. Kāhi Mōhala has been instrumental in providing alternative placement in a safe facility with effective and innovative behavioral health care programming.

Kāhi Mōhala currently has a contract with the State Department of Health Adult Mental Health Division (AMHD), which helps alleviate overcrowding at the Hawai'i State Hospital in Kaneohe. Our hospital also collaborates with the Child and Adolescent Mental Health Division (CAMHD) programs to provide cost efficient services for acute, residential, and partial care patients.

Statistically, nearly one in ten adults experiences some type of mental illness. It is estimated that more than 20 percent of those under the age of 18 nationally suffer from mental health issues, with even greater prevalence in Hawai'i due to methamphetamine co-morbidity.

Adolescents, who have emotional or mental health problems such as depression, are at increased health risk because even casual use of potent substances can cause severe medical problems including overdose or brain damage. Mental illness compounded by substance abuse can increase risk-taking behaviors with serious consequences. Alcohol and drug abuse is a leading cause of teen death or injury related to car accidents, suicides, and other forms of violence. Adolescent substance abuse can also have a negative impact on self-esteem, relationship skills, physical and emotional independence, or even the ability to hold a job.

The State Department of Health statistics confirm that compared with students nationally, Hawai'i's youth are at greater risk for suicide. Suicide was the second leading cause of death for youth ages 15-24 from 2003 to 2007 and the third leading cause of death for children ages 10-14 during the same period. Suicides are the leading cause of injury deaths for all age groups in Hawai'i, with an average of 120 a year. Of these, 75% had a history of mental illness.

*The impact of mental health disorders on the community and the workforce is significant:*

- ◆ The burden of mental illness on our society is second only to cardiovascular conditions in terms of Disability Adjusted Life Years. (DALYs are calculated the years of life lost to premature death and years lived with a disability).
- ◆ Clinical depression is one of America's most costly illnesses. Left untreated, depression is as costly as heart disease to the U.S. economy, costing more than \$51 billion annually in absenteeism from work and lost productivity and \$26 billion in direct treatment costs.
- ◆ Clinical depression is equivalent to the burden of blindness or paraplegia.
- ◆ Psychosis is equivalent to the burden of quadriplegia.
- ◆ In 2007, 12 million emergency department visits involved a diagnosis related to a mental health and/or substance abuse condition, accounting for one in eight of all ED visits in the U.S., and these visits were more likely to result in hospital admission. Mood disorder was the most common reason for an emergency visit (42.7%), followed by anxiety disorders (26.1%).
- ◆ The combined indirect and direct costs of mental illness, including costs of lost productivity, lost earnings due to illness and social costs are estimated to total at least \$113 billion annually.

Our therapeutic staff is painstaking in their efforts to support our patient population in taking responsibility for behavioral health issues that require active management on their part instead of full dependence on others. Treatment at Kāhi Mōhala is predicated on the concept of “recovery” from mental illness. By teaching our patients skills to become adept in examining how their personal choices affect their quality of life, and in learning to minimize the effects of self-defeating behaviors such as substance abuse, hospital patients learn to improve the quality of their own lives.

Renovations to the Admissions area will directly benefit the community through access to modernized and upgraded facilities and will improve the hospital’s ability to deliver critical, high quality behavioral health care at our convenient West O’ahu location. Renovating the Admissions area fills a tremendously important local need because it insures that patients and their families can be more effectively treated close to their homes, families and support networks in a comfortable and secure environment. The long-term goal is an improved therapeutic environment at the hospital that increases the options for recovery, empowers patients to self-manage their lives, whenever possible based on diagnosis, and decreases the need for costly chronic institutionalization.

### **Community Benefits**

Kāhi Mōhala provides community benefit services for poor and underserved patients including health care services for persons who cannot afford health care because of

inadequate resources and who are uninsured or underinsured. The cost of caring for the needy comes from the hospital's operating budget, because it bears the unpaid costs of the gaps in reimbursement of public health care programs by treating Medicaid, QUEST, QeXA, and Medicare beneficiaries. These beneficiaries include indigent and homeless patients who are typically referred to the hospital from emergency rooms around O'ahu, rather than through physician referrals. Collaborations with referral sources are vital to our ability to serve this population.

At Kāhi Mōhala, treatment programs are responsive to compelling needs in the community and our door is always open to everyone, regardless of race, religion or socio-economic status.

Benefits for the broader community include unpaid costs of providing the following direct and indirect health care services: treating the elderly, health screenings and other health-related services, training health professionals, educating the community with various seminars and classes, the cost of performing medical research and the costs associated with providing free clinics and community services. Also included are contributions Kāhi Mōhala makes to community agencies by providing meeting space and support for charitable activities.

Kāhi Mōhala strives to provide behavioral health services in response to community needs. For example, the hospital recently introduced a new adult outpatient service. This partial hospitalization program provides an alternative to hospitalization or residential treatment for adults needing a structured, intensive, outpatient therapeutic small-group setting with both clinical and psychiatric support. Patient empowerment and a positive behavioral management approach are guiding principles.

Kāhi Mōhala accepts patients from Hawai'i State Hospital where the number of patients continues to overwhelm mental health bed availability in the community, creating a backlog of patients who cannot access the appropriate hospital-based services and often wind up homeless or languishing in correctional institutions. Where concern over providing adequate levels of support for those who leave the state hospital is an issue, Kāhi Mōhala is uniquely suited to match appropriate services with the patient in a therapeutic care setting. Where payment for care is an issue, Medicare coverage is available and most of the state's Quest health care program patients would be eligible.

### **Quantifiable Community Benefits**

As an affiliate of the Sutter Health system, Kāhi Mōhala is connected to one of the nation's leading not-for-profit systems of community-based health care networks.

We are dedicated to the not-for-profit model of health care and believe it represents the best approach for assisting the people we serve. We believe in partnerships within the local community, unlike investor-owned, health systems that have a financial disincentive to avoid caring for uninsured and underinsured clients, and hard-to-serve populations including "undesirable" geographic areas.

We share our expertise and resources to advance the quality of care. Our local volunteer board members are actively involved in the community to help provide us with the best guidance to meet changing needs of the communities we serve.

In 2011, Kāhi Mōhala provided \$724,000 in total quantifiable community benefits for the poor, underserved, including homeless patients, and to the broader community. Total Quantifiable Community Benefits provided by Kāhi Mōhala (in thousands) are as follows:

FY 07 \$1149K  
FY 08 \$756K  
FY 09 \$717K  
FY10 \$514K  
FY11 \$724K\* FY11 is an estimate; final calculation will be available at the end of February.  
**Five year Total \$3.860M (average \$772K annually)**

**4. Describe the target population to be served;**

Kāhi Mōhala provides specialized care and behavioral health treatment for children (ages 3-12), adolescents (ages 13-17), and adults (18+) with psychiatric disorders, including those with co-occurring substance abuse.

Funding from this Grant-in-Aid will renovate hospital facilities that serve approximately 1,500 behavioral health patients annually as well as visitors, caregivers and guests to the campus. Of those, about 250 patients are children and adolescents and 1,250 are adults.

Although the majority of our patients suffer from depression or bipolar disorder, we also treat patients for anxiety, suicidal episodes, psychotic disorders, eating disorders, Post Traumatic Stress Disorder (PTSD), Attention Deficit Hyperactivity Disorder (ADD and ADHD) and dual diagnosis mental disorders. These patients frequently exhibit multiple needs that impair family relations, education and social functioning to such a degree that they cannot be effectively treated at a lower level of care.

During treatment, patients remain connected to their families. Family therapy is an essential component of inpatient treatment, and every effort is made to facilitate this for both O'ahu and Neighbor Island families. The program provides quality behavioral therapies and transition planning that strives to ensure seamless re-integration back to the community, in the least restrictive setting at the earliest opportunity, for home and school success.

**5. Describe the geographic coverage;**

For the past 28 years, Kāhi Mōhala has served the residents of the State of Hawai'i, and referrals from around the Pacific Rim, with quality behavioral healthcare.

Our highly skilled behavioral health practitioners work closely with the courts, other mental health caregivers and community agencies. Cooperative referrals insure that residents of the Neighbor Islands are effectively treated and presented with the option of returning home as quickly as possible.

The geographic distribution of our patients closely matches the demographics of the general population of the state.

If it were not for the presence of Kāhi Mōhala in West O‘ahu, many children, adolescents and adults with behavioral health disorders would not receive the specialized health care they need in their own community. It is very likely that patients would be required to seek health care services at a distant location on the mainland, or be inappropriately incarcerated in the public safety or juvenile justice systems.

## **II. Service Summary and Outcomes**

The Service Summary shall include a detailed discussion of the applicant’s approach to the request. The applicant shall clearly and concisely specify the results, outcomes, and measures of effectiveness from this request.

### **1. Describe the scope of work, tasks and responsibilities;**

The capital improvement activities to be funded with FY2012 Grant-In-Aid funds include construction, renovation and improvements to the Admissions area.

The project will reconfigure and renovate the Admissions area, including the addition of square footage to the unit entry, reception lobby, admissions office, intake and exam rooms and PBX Call Center. The project will include portions of the parking lot, sidewalk and exterior improvements and will add one unisex bathroom that complies with ADA standards. The renovated Admissions area will be transformed into a welcoming, well-designed, easy-access gateway to all services for patients with serious psychiatric emergencies and disorders as well as for their families and hospital visitors.

The work and materials will reflect LEED best practices and psychiatric facility design standards for safety and security for this vulnerable high-risk patient population.

### **2. The applicant shall provide a projected annual timeline for accomplishing the results or outcomes of the service;**

The construction and initial renovations can likely be accomplished within a one-year time frame from the date initial funding is received, provided that funding requests are approved and received in a timely manner.

Estimated project preparation/bidding/permitting schedule: Sept. 2012 – February 2013.  
Estimated project construction schedule: March – June 2013.



3. **The applicant shall describe its quality assurance and evaluation plans for the request. Specify how the applicant plans to monitor, evaluate, and improve their results; and**

Kāhi Mōhala’s project team includes Rose Choy, CFO, who will serve as project administration manager and David Ellis, hospital on-site facilities manager, who will serve as project manager.

Project plans with timelines and designated responsible individuals will be developed, monitored and evaluated by the CFO on a monthly basis, with corrective actions as needed to ensure quality assurance and compliance.

4. **The applicant shall list the measure(s) of effectiveness that will be reported to the State agency through which grant funds are appropriated (the expending agency). The measure(s) will provide a standard and objective way for the State to assess the program's achievement or accomplishment. Please note that if the level of appropriation differs from the amount included in this application that the measure(s) of effectiveness will need to be updated and transmitted to the expending agency.**

This project’s effectiveness will be measured for timeliness, cost effectiveness and quality of construction/renovation work.

### III. Financial

#### Budget

1. **The applicant shall submit a budget utilizing the enclosed budget forms as applicable, to detail the cost of the request.**

Please see Attachment A for the detailed cost of this \$125,000 request (4 budget pages). The estimated budget for the Admissions Area Renovation is \$775,000 from all sources.

2. **The applicant shall provide its anticipated quarterly funding requests for the fiscal year 2012-2013.**

Quarter 1	Quarter 2	Quarter 3	Quarter 4	Total Grant
\$0	\$0	\$62,500	\$62,500	125,000

3. **The applicant shall provide a listing of all other sources of funding that they are trying to obtain for fiscal year 2012-2013.**

Please see Attachment B for the listing of all other potential funding sources for fiscal year 2012-2013 for this project.

4. **The applicant shall provide a listing of all state and federal tax credits that have been granted within the prior three years. Additionally, the applicant shall provide a listing of all state and federal tax credits they have applied for or anticipate applying for pertaining to any capital project, if applicable.**

Not applicable.

#### **IV. Experience and Capability**

##### **A. Necessary Skills and Experience**

**The applicant shall demonstrate that it has the necessary skills, abilities, knowledge of, and experience relating to the request. State your experience and appropriateness for providing the service proposed in this application. The applicant shall also provide a listing of verifiable experience of related projects or contracts for the most recent three years that are pertinent to the request.**

For more than a generation, Kāhi Mōhala Behavioral Health has provided specialized care and treatment for children, adolescents and adults statewide. Kāhi Mōhala is a certified Medicare provider and certified by Tricare for child and adolescent residential treatment and partial hospitalization.

Kāhi Mōhala is the first hospital-based center for psychiatry in Hawai‘i to provide services for the military in the Pacific Rim. In addition, Kāhi Mōhala is fully accredited by The Joint Commission (formerly JCAHO, the Joint Commission on Accreditation of Healthcare Organizations), certified by the Center for Medicare Services (CMS), and licensed by the State of Hawai‘i.

Kāhi Mōhala is the only freestanding, not-for-profit psychiatry hospital in Hawai‘i specializing exclusively in behavioral health care. Kāhi Mōhala specializes in comprehensive treatment programs for children (ages 3-12), adolescents (ages 13-17), and adults (age 18+) offering specialized treatment plans for:

- ◆ Depression, Bipolar and other Mood Disorders
- ◆ Eating Disorders
- ◆ Anxiety Disorders
- ◆ Suicidal Ideation
- ◆ Post Traumatic Stress Disorder (PTSD)
- ◆ Psychotic Disorders
- ◆ Substance-related Disorders
- ◆ Oppositional Defiant Disorders
- ◆ Attention Deficit Hyperactivity Disorder (ADD/ADHD)

Kāhi Mōhala's medical team of behavioral health care experts specializes in clinical assessments, psychological testing, individualized evaluation, substance abuse recovery, cognitive-behavioral therapies, individual, group and family-centered therapy programs, and psychiatric medical evaluation and management. Comprehensive treatment is available that may combine a range of options from supervised inpatient care and medical treatment to educational programs. Once referred and deemed appropriate for hospital-based care, patients are placed on an acute or continuing inpatient unit based on acuity and risk of harm. Patients requiring this level of care often have issues and persistent patterns of behavior that cannot be successfully treated in community-based outpatient programs or in partial hospitalization.

**Related projects or contracts for the most recent three years that are pertinent to the request:**

Within the past three years, more than \$1.4 million in capital improvements have been initiated at Kāhi Mōhala including:

*Lehua A Adult Unit Renovation*

Kāhi Mōhala has been working on renovations to the *Lehua A* adult unit, which required multiple upgrades to the aging building and the sanitary facilities, since 2009, when the City & County of Honolulu first approved \$547,816 in CDBG funds. After a strict bidding protocol, architectural firm Urban Works, a specialist in LEED green technology design, was hired to assess the renovation needs and new construction scope for the unit. Medical, administrative, and facilities staff worked diligently with the architects to provide feedback and prioritize the physical renovation requirements, with sensitivity to the needs of the patients. The first phase of *Lehua A* renovations were completed in October 2011.

With an additional \$550,000 in CDBG funding released for the second phase of renovations to the *Lehua A* unit, including eight new semi-private bathrooms in the patient bedrooms, construction will start in February 2012. Community and hospital-wide fundraising during 2011 in excess of \$80,000 leveraged an additional \$75,000 grant through a Sutter Health Matching Challenge. These donations will fund *Lehua A* expenses such as appliances, lighting, furniture, artwork, Nursing Station and Medications Room equipment and supplies.

*Lokelani Adolescent Unit Renovation*

In December 2010, Phase II renovations for the *Lokelani* adolescent unit were completed. Numerous improvements were made from the front doors, entry lobby, day area and new medications room, to the new Nursing Station, service hallway, kitchen, and new laundry room. The renovations featured a high quality and modern design, specifically designed for patients experiencing acute mental trauma and the dedicated professionals who care for them. Materials were selected for their appearance, durability, low maintenance, and effectiveness for the special needs of our patients. This successful fundraising effort included a \$50,000 Sutter Health Matching Challenge Grant and funds from the Trustees, hospital staff, community members, and foundations.

ROPES (Reality-Oriented Physical Experiential Services) Challenge Course Construction  
During 2009 and 2010, a completely new therapeutic ROPES Challenge Course was built on campus to replace the deteriorated original equipment. Kāhi Mōhala inaugurated ROPES in May 2010, after four years of planning, construction, and fundraising. This \$250,000 project was a long-term investment for both our patients and the community. Designed by a specialist in mental health adaptation of basic ROPES courses, it complements Kāhi Mōhala's traditional therapies via an outdoor therapy program that is completely unique to our hospital. It is also an opportunity for students, community organizations and business leaders to experience an innovative outdoor challenge that teaches teamwork and enhances life skills. A \$50,000 grant from the HMSA Foundation established the HMSA Foundation Challenge Course Community Access Fund to underwrite the fees for the ROPES experience for school children and youth groups.

**B. Facilities**

**The applicant shall provide a description of its facilities and demonstrate its adequacy in relation to the request. If facilities are not presently available, describe plans to secure facilities. Also describe how the facilities meet ADA requirements, as applicable.**

Kāhi Mōhala is located on 14.5 acres in Ewa Beach consisting of five buildings and one modular building for a total of 64,000 square feet. Built in 1982, and opened in the autumn of 1983, the facility has been in continuous use for 28 years providing inpatient and outpatient behavioral health services for the people of Hawai'i. The buildings and grounds offer a complete therapeutic environment with an emphasis on patient safety and security. The facilities have ADA access. Please see the attached campus map for the facility layout.

**V. Personnel: Project Organization and Staffing**

**A. Proposed Staffing, Staff Qualifications, Supervision and Training**

**The applicant shall describe the proposed staffing pattern and proposed service capacity appropriate for the viability of the request. The applicant shall provide the qualifications and experience of personnel for the request and shall describe its ability to supervise, train and provide administrative direction relative to the request.**

Kāhi Mōhala’s project management team has extensive experience with behavioral health care facility design, construction and renovation. Project plans with time lines will be developed, monitored and evaluated by the CFO on a regular basis, with corrective actions as needed to ensure compliance. Contractors and vendors will be chosen based on professional qualifications, competencies and referrals.

Rose D. Choy, Chief Financial Officer (Administrative Project Manager)

Rose Choy became Chief Financial Officer in 2008 and has been with Kāhi Mōhala since 1995, most recently as Controller. Her experience in health care finance and accounting spans nearly three decades, including financial positions with the Rehabilitation Hospital of the Pacific and Kapiolani Medical Center. Ms. Choy holds a B.S. in Business Administration from the University of Hawai‘i and is a member of the Healthcare Financial Management Association. She has been serving as administrative project manager for the CDBG-funded *Lehua A* renovation project since its inception.

David Ellis, Facilities Manager (Project Manager)

David Ellis has served as Facilities Manager at Kāhi Mōhala for the past six years. He oversees all aspects of the physical operating plant, including repairs, project management and major capital projects. He has 12 years of additional experience in facilities management at community psychiatric centers including responsibility for safety, security and emergency management. An experienced general contractor, Mr. Ellis worked for more than 15 years in commercial and residential construction. He has been serving as project manager for the CDBG-funded *Lehua A* renovation project since its inception. With the external architectural project manager, he will oversee quality of construction, code compliance, and Interim Life Safety Measures (ILSM) for the Admissions Area renovations.

**B. Organization Chart**

**The applicant shall illustrate the position of each staff and line of responsibility/supervision. If the request is part of a large, multi-purpose organization, include an organizational chart that illustrates the placement of this request.**

Please see Attachment C.

**VI. Other**

**A. Litigation**

**The applicant shall disclose any pending litigation to which they are a party, including the disclosure of any outstanding judgement. If applicable, please explain.**

There is no litigation or any outstanding judgments against Kāhi Mōhala.

**B. Licensure or Accreditation**

**Specify any special qualifications, including but not limited to licensure or accreditation that applicant possesses relevant to this request.**

Kāhi Mōhala Behavioral Health operates 88 acute inpatient beds that are licensed by the State of Hawai‘i, Department of Health. Kāhi Mōhala is fully accredited by The Joint Commission (formerly the Joint Commission Accreditation of Healthcare Organizations JCAHO) under two sets of standards: The Hospital Standards Manual and the Behavioral Health Care Manual. Kāhi Mōhala is the first hospital-based center for psychiatry in Hawai‘i to provide services for the military in the Pacific Rim. As such, Kāhi Mōhala is a certified provider by TriCare for inpatient, residential and partial hospitalization services.

In addition, Kāhi Mōhala is certified by the Center for Medicare and Medicaid Services (CMS) with fully certified child and adolescent inpatient treatment and partial hospitalization programs. Kāhi Mōhala is also a member in good standing of the Hawai‘i Association of Health Care (HAH) and the American Hospital Association (AHA).

**DECLARATION STATEMENT  
APPLICANTS FOR GRANTS AND SUBSIDIES  
CHAPTER 42F, HAWAI'I REVISED STATUTES**

The undersigned authorized representative of the applicant acknowledges that said applicant meets and will comply with all of the following standards for the award of grants and subsidies pursuant to section 42F-103, Hawai'i Revised Statutes:

- (1) Is licensed or accredited, in accordance with federal, state, or county statutes, rules, or ordinances, to conduct the activities or provide the services for which a grant or subsidy is awarded;
- (2) Comply with all applicable federal and state laws prohibiting discrimination against any person on the basis of race, color, national origin, religion, creed, sex, age, sexual orientation, or disability;
- (3) Agree not to use state funds for entertainment or lobbying activities; and
- (4) Allow the state agency to which funds for the grant or subsidy were appropriated for expenditure, legislative committees and their staff, and the auditor full access to their records, reports, files, and other related documents and information for purposes of monitoring, measuring the effectiveness, and ensuring the proper expenditure of the grant or subsidy.

In addition, a grant or subsidy may be made to an organization only if the organization:

- (1) Is incorporated under the laws of the State; and
- (2) Has bylaws or policies that describe the manner in which the activities or services for which a grant or subsidy is awarded shall be conducted or provided.

Further, a grant or subsidy may be awarded to a non-profit organization only if the organization:

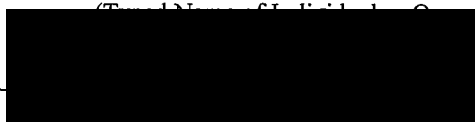
- (1) Has been determined and designated to be a non-profit organization by the Internal Revenue Service; and
- (2) Has a governing board whose members have no material conflict of interest and serve without compensation.

For a grant or subsidy used for the acquisition of land, when the organization discontinues the activities or services on the land acquired for which the grant or subsidy was awarded and disposes of the land in fee simple or by lease, the organization shall negotiate with the expending agency for a lump sum or installment repayment to the State of the amount of the grant or subsidy used for the acquisition of the land.

Further, the undersigned authorized representative certifies that this statement is true and correct to the best of the applicant's knowledge.

Sutter Health Pacific dba Kāhi Mōhala

(Typed Name of Individual or Organization)



1-30-17

(Date)

Leonard Ličina

(Typed Name)

Chief Executive Officer

(Title)

---

## ATTACHMENTS

---

- ❑ ATTACHMENT A – CAPITAL PROJECT BUDGET JUSTIFICATION (4 pages)
- ❑ ATTACHMENT B – ALL OTHER POTENTIAL FUNDING SOURCES LISTING FOR FY2012-2013.
- ❑ ATTACHMENT C – KĀHI MŌHALA ORGANIZATION CHART
- ❑ KĀHI MŌHALA BOARD OF DIRECTORS
- ❑ KĀHI MŌHALA SERVICES OVERVIEW
- ❑ IRS 501 (c)(3) NON-PROFIT DETERMINATION LETTER
- ❑ KĀHI MŌHALA CAMPUS MAP AND PHOTOGRAPHS



**ATTACHMENT A**

**Sutter Health Pacific dba**

**Kāhi Mōhala**

**Admissions Area Renovation Request**

**Capital Improvement Project Budget Justification**

**(4 pages)**

## BUDGET REQUEST BY SOURCE OF FUNDS

(Period: July 1, 2012 to June 30, 2013)

Applicant: Kāhi Mōhala

BUDGET CATEGORIES	Total State Funds Requested (a)	CDBG Funds Requested (b)	Private Funding (c)	(d)
A. PERSONNEL COST				
1. Salaries				
2. Payroll Taxes & Assessments				
3. Fringe Benefits				
TOTAL PERSONNEL COST				
B. OTHER CURRENT EXPENSES				
1. Airfare, Inter-Island				
2. Insurance				
3. Lease/Rental of Equipment				
4. Lease/Rental of Space				
5. Staff Training				
6. Supplies				
7. Telecommunication				
8. Utilities				
9				
10				
11				
12				
13				
14				
15				
16				
17				
18				
19				
20				
TOTAL OTHER CURRENT EXPENSES	0			
C. EQUIPMENT PURCHASES			50,000	
D. MOTOR VEHICLE PURCHASES				
E. CAPITAL	125,000	600,000	0	
<b>TOTAL (A+B+C+D+E)</b>	<b>775,000</b>			
<b>SOURCES OF FUNDING</b>		Budget Prepared By:		
(a) Total State Funds Requested	125,000	<div style="background-color: black; width: 150px; height: 20px; margin-bottom: 5px;"></div> Rose D. Choy, Chief Financial Officer <span style="float: right;">677-2580</span>		
(b) CDBG Funds Requested	600,000	Name (Please type or print) <span style="float: right;">Phone</span>		
(c) Private Funding	50,000	<div style="background-color: black; width: 150px; height: 20px; margin-bottom: 5px;"></div> <span style="float: right;">1-30-12</span>		
(d)		Signature of Authorized Official <span style="float: right;">Date</span>		
<b>TOTAL BUDGET</b>	<b>775,000</b>	Leonard Ličina, Chief Executive Officer Name and Title (Please type or print)		

## BUDGET JUSTIFICATION PERSONNEL - SALARIES AND WAGES

Applicant: Kahi Mohala

Period: July 1, 2012 to June 30, 2013

POSITION TITLE	FULL TIME EQUIVALENT	ANNUAL SALARY A	% OF TIME ALLOCATED TO GRANT REQUEST B	TOTAL STATE FUNDS REQUESTED (A x B)
				\$ -
Not Applicable				\$ -
				\$ -
				\$ -
				\$ -
				\$ -
				\$ -
				\$ -
				\$ -
				\$ -
				\$ -
				\$ -
				\$ -
				\$ -
				\$ -
				\$ -
				\$ -
<b>TOTAL:</b>				\$ -
<b>JUSTIFICATION/COMMENTS:</b>				

## BUDGET JUSTIFICATION - EQUIPMENT AND MOTOR VEHICLES

Applicant: Kahi Mohala

Period: July 1, 2012 to June 30, 2013

DESCRIPTION EQUIPMENT	NO. OF ITEMS	COST PER ITEM	TOTAL COST	TOTAL BUDGETED
Built in Workstations & Cabinets in Admission/Reception Area			\$ 20,000.00	
Built in Cabinetry & Furniture in Examination Room			\$ 15,000.00	
Built in Cabinetry & Furniture in Family Conference Room			\$ 15,000.00	
<b>TOTAL:</b>			<b>\$ 50,000.00</b>	

JUSTIFICATION/COMMENTS:

**Equipment/Furniture/Fixtures will be funded by Private Donations**

DESCRIPTION OF MOTOR VEHICLE	NO. OF VEHICLES	COST PER VEHICLE	TOTAL COST	TOTAL BUDGETED
			\$ -	
			\$ -	
			\$ -	
			\$ -	
			\$ -	
<b>TOTAL:</b>				

JUSTIFICATION/COMMENTS:

**BUDGET JUSTIFICATION  
CAPITAL PROJECT DETAILS**

Applicant: Kahi Mohala

Period: July 1, 2012 to June 30, 2013

FUNDING AMOUNT REQUESTED						
TOTAL PROJECT COST	ALL SOURCES OF FUNDS RECEIVED IN PRIOR YEARS		STATE FUNDS REQUESTED	OF FUNDS REQUESTED	FUNDING REQUIRED IN SUCCEEDING YEARS	
	FY: 2010-2011	FY: 2011-2012	FY:2012-2013	FY:2012-2013	FY:2013-2014	FY:2014-2015
PLANS						
LAND ACQUISITION						
DESIGN						
CONSTRUCTION			125,000	650,000		
EQUIPMENT						
<b>TOTAL:</b>			125,000	650,000		
<b>JUSTIFICATION/COMMENTS:</b>						

**ATTACHMENT B**

<b>Kāhi Mōhala Behavioral Health</b>		
<b>ADMISSIONS AREA RENOVATION</b>		
<b>All Other Potential Funding Sources</b>		
<b>INCOME</b>		
	Private Foundations	\$ 50,000
	Legislative Grant in Aid	\$ 125,000
	CDBG	\$ 600,000
	<b>TOTAL INCOME</b>	<b>\$ 775,000</b>
<b>EXPENSES</b>		
	New Admissions Entry, Lobby & Reception Area	\$ 475,000
	Patient Examination Room	\$ 50,000
	Family Conference Room	\$ 50,000
	Equipment/Furniture/Fixtures for Admissions Area, Examination Room & Conference Room	\$ 50,000
	Unisex Bathroom	\$ 80,000
	Renovate Walkway/Entrance from parking to new Admissions Entry	\$ 70,000
	<b>TOTAL EXPENSE</b>	<b>\$ 775,000</b>

**ATTACHMENT C**

**Sutter Health Pacific dba**

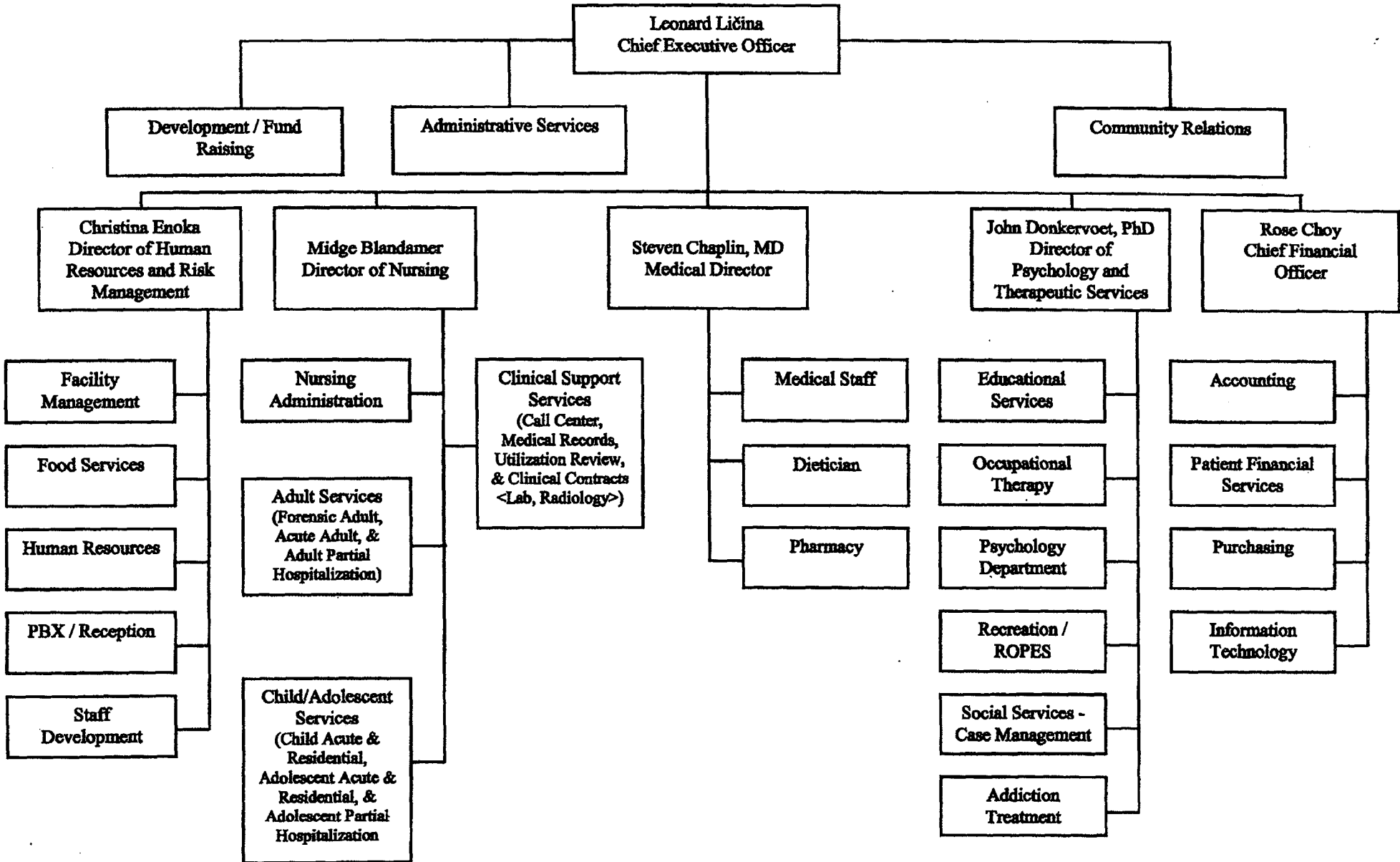
**Kāhi Mōhala**

**Organizational Chart**

# KĀHI MŌHALA ORGANIZATION CHART

Reviewed and Approved:  
Date: 4/25/2011

*Leonard Ličina*  
Leonard Ličina  
Chief Executive Officer







*Kāhi Mōhala*  
*Behavioral Health*

A Sutter Health Affiliate **Sutter Health Pacific dba Kāhi Mōhala**  
**Board of Trustees**  
**As of January 1, 2012**

91-2301 Old Fort Weaver Road  
Ewa Beach, Hawaii 96706  
(808) 671-8511  
(808) 677-2570 Fax

<p>Dianne W. Brookins (<b>Chair</b>) Shareholder and Director Alston, Hunt, Floyd &amp; Ing, Attorneys 1001 Bishop Street 1800 (ASB) Tower Honolulu, HI 96813 Ph: (808) 524-1800 email: <a href="mailto:dbrookins@ahfi.com">dbrookins@ahfi.com</a></p>	<p>Diane Stewart (<b>Vice Chair</b>) 124 Boxford Square Folsom, California 95630 Ph: (916) 983-6943 email: <a href="mailto:dgstewart@sbcglobal.net">dgstewart@sbcglobal.net</a></p>
<p>Sarah Krevans (<b>Board Secretary</b>) Sr. Vice President and Regional Executive Director Sutter Health 2200 River Plaza Drive, Suite 263 Sacramento, CA 95816 Ph: (916) 286-6712 email: <a href="mailto:krevans@sutterhealth.org">krevans@sutterhealth.org</a></p>	
<p>J. Kuhio Asam, M.D. Retired Physician 1288 Ala Moana Boulevard #13-A Honolulu, HI 96814 Ph: (808) 591-0011 Email: <a href="mailto:kuhio@myhokua.com">kuhio@myhokua.com</a></p>	<p>Steven Chaplin, M.D. Medical Director Kāhi Mōhala 91-2301 Old Fort Weaver Rd. Ewa Beach, HI 96706 Ph: (808) 671-8511 email: <a href="mailto:chaplins@kahi.org">chaplins@kahi.org</a></p>
<p>Patrick Duarte President/CEO Kahala Nui 4389 Malia Street Honolulu, HI 96821 Ph: (808) 218-7200 email: <a href="mailto:PDuarte@KahalaNui.com">PDuarte@KahalaNui.com</a></p>	<p>David Hudson (<b>Finance Chair</b>) Executive Vice President, Community Banking Manager Central Pacific Bank P.O. Box 3590 Honolulu, HI 96811 Ph: (808) 544-3699 email: <a href="mailto:david.hudson@centralpacificbank.com">david.hudson@centralpacificbank.com</a></p>

**Sutter Health Pacific dba Kāhi Mōhala  
Board of Trustees  
As of January 1, 2012**

<p>Leonard Ličina Chief Executive Officer Kāhi Mōhala 91-2301 Old Fort Weaver Road Ewa Beach, HI 96706 Ph: (808) 677-2503 email: <a href="mailto:licinal@kahi.org">licinal@kahi.org</a></p>	<p>Cameron Nekota Vice President D.R. Horton-Schuler Division 650 Iwilei Road, Suite 209 Honolulu, HI 96817 Ph: (808) 528-9074 email: <a href="mailto:CNekota@drhorton.com">CNekota@drhorton.com</a></p>
<p>Nancy E. Pace, M.D., MSPH <b>(Development Committee Chair)</b> Physician 4615 Aukai Ave. Honolulu, HI 96816 Ph: (808) 256-3333 email: <a href="mailto:pacely@aol.com">pacely@aol.com</a></p>	<p>Tina Shelton Director of Communications John A. Burns School of Medicine 1349-F Moanalualani Way Honolulu, HI 96819 Ph: (808) 692-0897 email: <a href="mailto:sheltont@hawaii.edu">sheltont@hawaii.edu</a></p>
<p>Judge Allene R. Suemori (Ret.) 841 Bishop Street, Suite 801 Honolulu, HI 96813 Ph: (808) 532-1714 email: <a href="mailto:lauele@aol.com">lauele@aol.com</a></p>	<p>Shelley J. Wilson President Wilson Homecare 1221 Kapiolani Blvd., Ste. 940 Honolulu, HI 96814 Ph: (808) 596-4486 email: <a href="mailto:shelley@wilsonhomecare.net">shelley@wilsonhomecare.net</a></p>

**Internal Revenue Service**

**Date:** March 21, 2005

SUTTER HEALTH PACIFIC  
KAHI MOHALA HOSPITAL  
% LEONARD LICINA  
91 2301 FORT WEAVER RD  
EWA BEACH HI 96706

**Department of the Treasury**  
**P. O. Box 2508**  
**Cincinnati, OH 45201**

**Person to Contact:**

John C. Crawford 31-08343  
Customer Service Representative

**Toll Free Telephone Number:**

8:30 a.m. to 5:30 p.m. ET  
877-829-5500

**Fax Number:**

513-263-3756

**Federal Identification Number:**

99-0298651

Dear Sir or Madam:

This is in response to your request of March 21, 2005, regarding your organization's tax-exempt status.

In January 1995 we issued a determination letter that recognized your organization as exempt from federal income tax. Our records indicate that your organization is currently exempt under section 501(c)(3) of the Internal Revenue Code.

Our records indicate that your organization is also classified as a hospital under sections 509(a)(1) and 170(b)(1)(A)(iii) of the Internal Revenue Code.

Our records indicate that contributions to your organization are deductible under section 170 of the Code, and that you are qualified to receive tax deductible bequests, devises, transfers or gifts under section 2055, 2106 or 2522 of the Internal Revenue Code.

If you have any questions, please call us at the telephone number shown in the heading of this letter.

Sincerely,



Janna K. Skufca, Director, TE/GE  
Customer Account Services



*Kāhi Mōhala  
Behavioral Health  
Health Alliance*

Community-Based Behavioral Health

# Services Overview

Kāhi Mōhala Behavioral Health is a center of excellence for behavioral health care services. Kāhi Mōhala is dedicated to caring for people in need by providing a continuum of innovative, high quality and effective treatment services. Individualized and diverse treatment programs offer the maximum opportunity for personal growth. An interdisciplinary health care team coordinates patient care. This team provides the behavioral health care and education that our patients need.

## Program Profile

### *Comprehensive Behavioral Health Services*

- ✦ Male and Female, ages 4 – Adult
- ✦ Acute Treatment Programs
- ✦ Residential Treatment Programs

## Admissions Overview

Kāhi Mōhala offers a full continuum of behavioral health care services for patients experiencing emotional or behavioral problems that interfere with daily functioning in work, family, school and social settings. The individual may be experiencing difficulty with:

- ✦ Alcohol and Drug Abuse
- ✦ Anxiety
- ✦ Depression
- ✦ Eating Disorders
- ✦ Psychotic Disorders
- ✦ Emotional Disturbances
- ✦ Affect Disorders
- ✦ Post Traumatic Stress Disorder (PTSD)
- ✦ Cognitive Disorders
- ✦ Conduct Disorders
- ✦ Oppositional Defiant Disorders
- ✦ Attention Deficit Hyperactivity Disorder (ADD/ADHD)

## Treatment Services

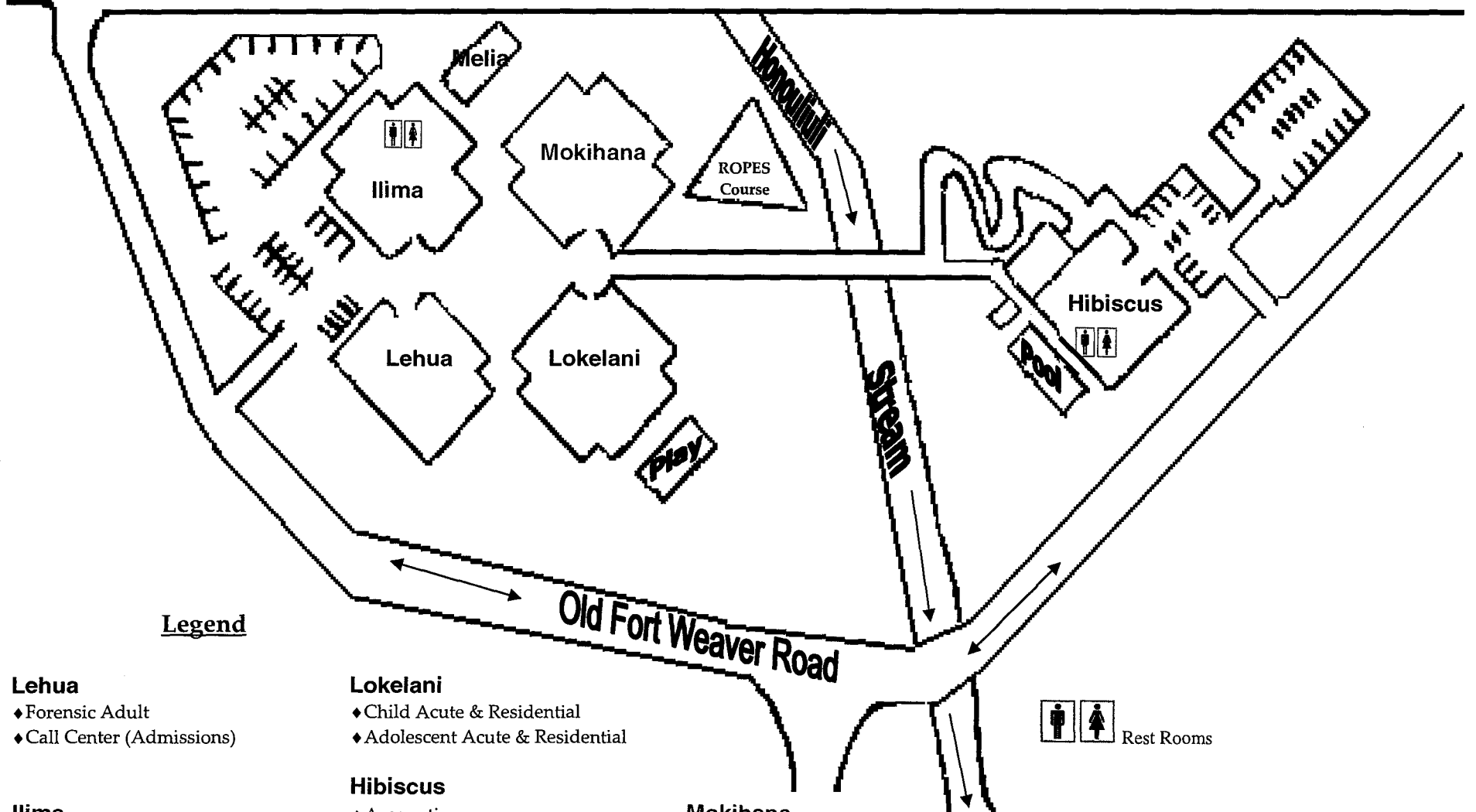
- ✦ Evaluation and Referral
- ✦ Acute Treatment Programs
  - Adult, ages 18 and older*
  - Adolescent, ages 13 - 17*
  - Child, ages 4 –12*
- ✦ Residential Treatment Programs
  - Adolescent, ages 13 - 17*
  - Child, ages 4 –12*
- ✦ Partial Hospitalization
  - Adolescent, ages 13 –18*

## Specialty Treatment Services

- ✦ Rehabilitative Services
  - Occupational Therapy*
  - Art Therapy*
  - Recreational Therapy*
- ✦ Educational Program
- ✦ Reality-Oriented Physical Experiential Services (ROPES)



**Farrington Highway**



**Legend**

**Lehua**

- ◆ Forensic Adult
- ◆ Call Center (Admissions)

**Ilima**

- ◆ Food Services
- ◆ Facilities
- ◆ OT, RT, Education
- ◆ ECT Services (suspended)

**Lokelani**

- ◆ Child Acute & Residential
- ◆ Adolescent Acute & Residential

**Hibiscus**

- ◆ Accounting
- ◆ Administration
- ◆ Community Relations
- ◆ Human Resources
- ◆ Information Technology
- ◆ Patient Financial Services
- ◆ Purchasing

**Mokihana**

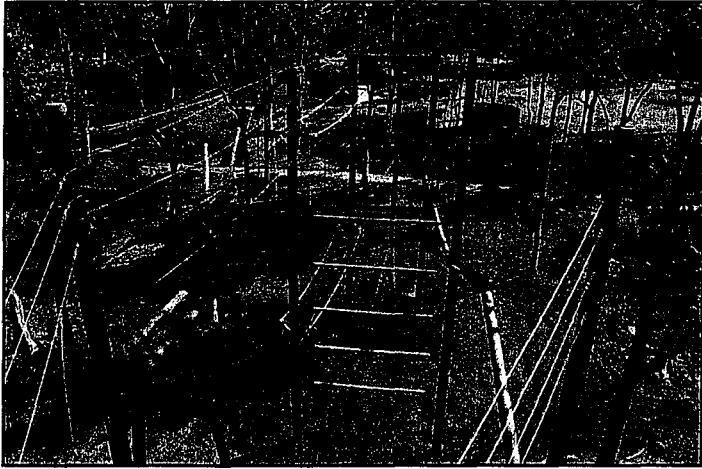
- ◆ Acute Adult

**Melia**

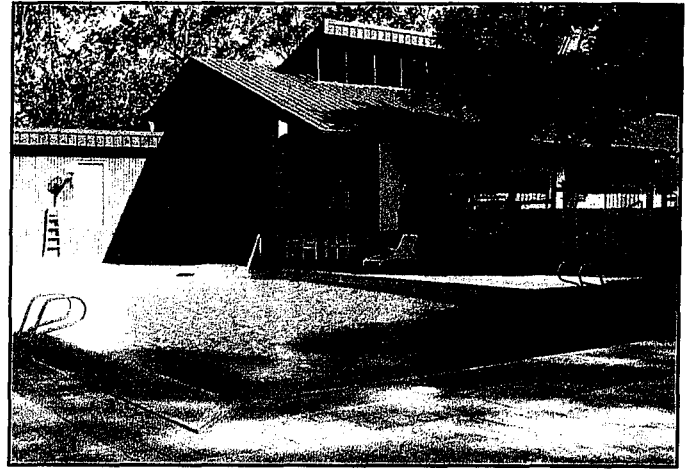
- ◆ Adolescent Partial Hospital Program



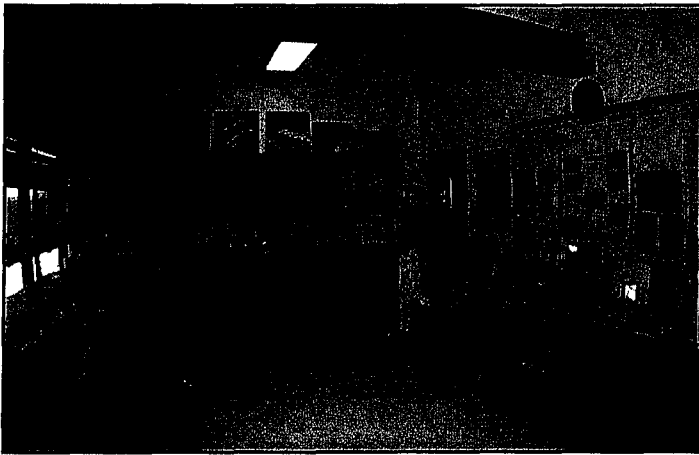
91-2301 Old Fort Weaver Road  
Ewa Beach, Hawai'i 96706  
808-671-8511  
808-677-2570 Fax



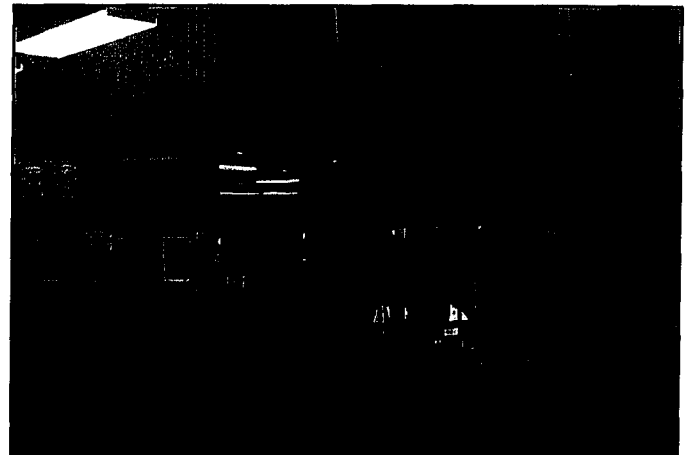
ROPES Course



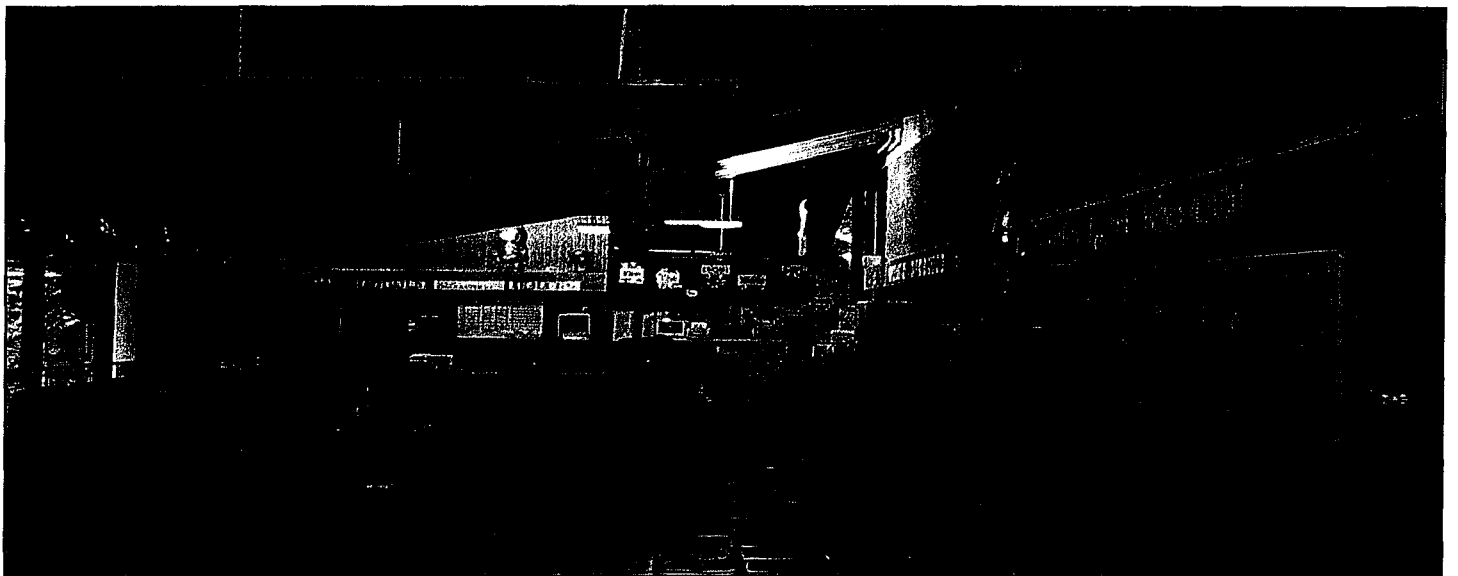
Swimming Pool



Occupational Therapy

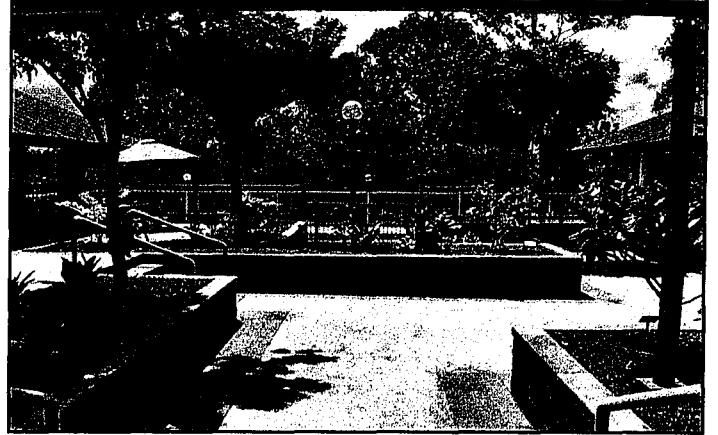


Nurses' Station





Administration Building



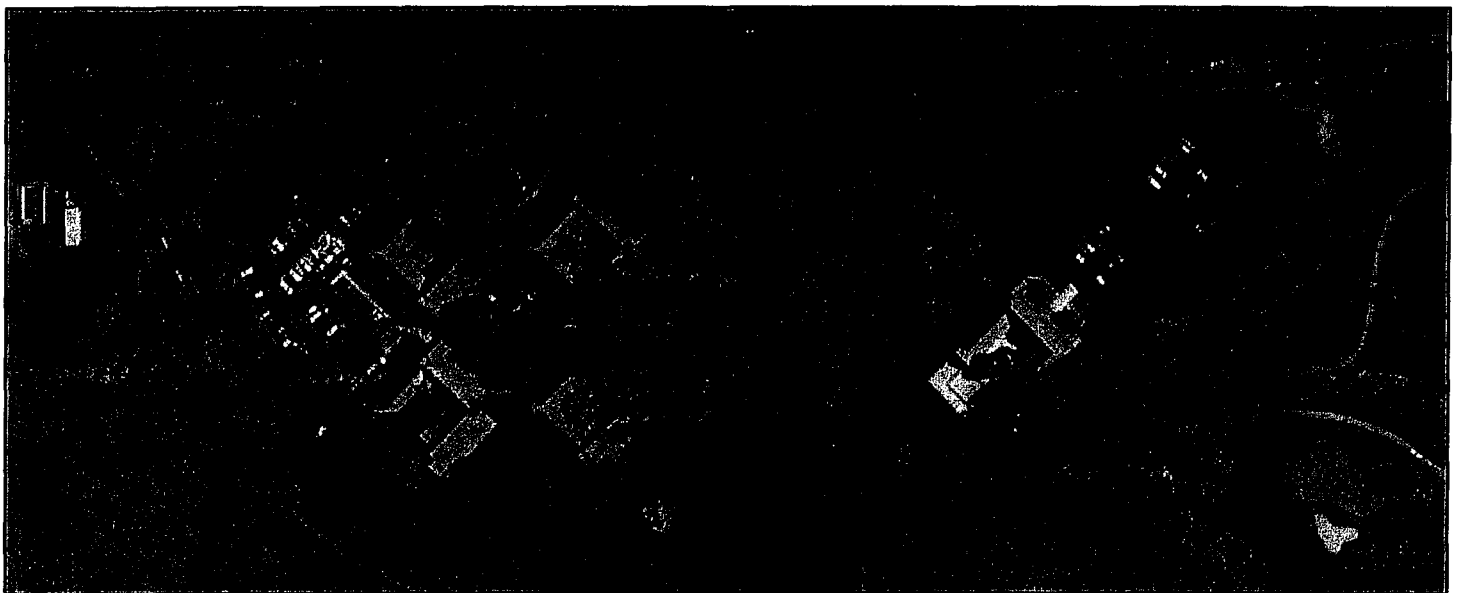
Courtyard



Walking Trail



Amphitheater





## *Our Mission...*

*Kāhi Mōhala is dedicated to caring for people in need by providing innovative, quality and effective behavioral health services.*

## *Our Philosophy...*

*Improving the quality of life for the people we serve is at the heart of Kāhi Mōhala's philosophy of care.*

*Entrusted with delivering the highest standards of care to the people we serve, Kāhi Mōhala specializes in the leading approaches in behavioral health, delivering the best possible treatment outcomes.*