

House District 5  
Senate District 2

THE TWENTY-SIXTH LEGISLATURE  
HAWAII STATE LEGISLATURE  
APPLICATION FOR GRANTS & SUBSIDIES  
CHAPTER 42F, HAWAII REVISED STATUTES

Log No: 21-C

For Legislature's Use Only

Type of Grant or Subsidy Request:

GRANT REQUEST - OPERATING

GRANT REQUEST - CAPITAL

SUBSIDY REQUEST

"Grant" means an award of state funds by the legislature, by an appropriation to a specified recipient, to support the activities of the recipient and permit the community to benefit from those activities.

"Subsidy" means an award of state funds by the legislature, by an appropriation to a recipient specified in the appropriation, to reduce the costs incurred by the organization or individual in providing a service available to some or all members of the public.

"Recipient" means any organization or person receiving a grant or subsidy.

STATE DEPARTMENT OR AGENCY RELATED TO THIS REQUEST (LEAVE BLANK IF UNKNOWN):

STATE PROGRAM I.D. NO. (LEAVE BLANK IF UNKNOWN):

1. APPLICANT INFORMATION:

Legal Name of Requesting Organization or Individual:

Friends of the Volcano School of Arts & Sciences

Dbas:

Street Address: 99-128 Old Volcano Road, Volcano, HI 96783

Mailing Address: P.O. Box 845, Volcano, Hawaii 96785

2. CONTACT PERSON FOR MATTERS INVOLVING THIS APPLICATION:

Name: ROBERT P. SMITH

Title Chair, Friends of the Volcano School of Arts & Sciences

Phone # 808-342-1036

Fax # 808-985-9806

e-mail SMITH1127@AOL.COM

3. TYPE OF BUSINESS ENTITY:

- NON PROFIT CORPORATION  
 FOR PROFIT CORPORATION  
 LIMITED LIABILITY COMPANY  
 SOLE PROPRIETORSHIP/INDIVIDUAL

6. DESCRIPTIVE TITLE OF APPLICANT'S REQUEST:

THE FRIENDS OF VOLCANO SCHOOL OF ARTS & SCIENCES SEEKS A \$618,000 GRANT IN AID TO ASSIST IN THE PLANNING AND DESIGNING PHASE FOR THE DEVELOPMENT OF A K-8 CAMPUS ON THE SITE OF THE HISTORIC KEAKEALANI SCHOOL PROPERTY IN VOLCANO VILLAGE ON THE ISLAND OF HAWAII. THE PURPOSE OF THIS REQUEST IS TO RELOCATE THE SCHOOL, CURRENTLY SITUATED ON A LEASED, CONSERVATION SITE THAT RESTRICTS FURTHER EXPANSION AND EQUAL ACCESS, TO THE 3.5 ACRE KEAKEALANI SITE, WHICH IS ON STATE-OWNED LAND. THESE FUNDS WILL BE UTILIZED FOR THE CONSULTING, PLANNING AND DESIGN OF THE NEW CAMPUS, CONCLUDING WITH A "SHOVEL READY" PROJECT, INCLUDING COMMUNITY DISCLOSURE COMPLIANCE UNDER HRS CHAPTER 343.

4. FEDERAL TAX ID #:

5. STATE TAX ID #:

7. AMOUNT OF STATE FUNDS REQUESTED:

FY 2012-2013: \$ 618,000.00

8. STATUS OF SERVICE DESCRIBED IN THIS REQUEST:

- NEW SERVICE (PRESENTLY DOES NOT EXIST)  
 EXISTING SERVICE (PRESENTLY IN OPERATION)

SPECIFY THE AMOUNT BY SOURCES OF FUNDS AVAILABLE AT THE TIME OF THIS REQUEST:

STATE \$ \_\_\_\_\_  
FEDERAL \$ \_\_\_\_\_  
COUNTY \$ \_\_\_\_\_  
PRIVATE/OTHER \$ 145,000.00

TYPE NAME & TITLE OF AUTHORIZED REPRESENTATIVE:

AUTHORIZED SIGNATURE

Robert P. Smith, Chair, Friends of VSAS  
NAME & TITLE

JAN. 12, 2012  
DATE SIGNED

## Application for Grants and Subsidies

*If any item is not applicable to the request, the applicant should enter "not applicable".*

### I. Background and Summary

This section shall clearly and concisely summarize and highlight the contents of the request in such a way as to provide the State Legislature with a broad understanding of the request. Include the following:

#### 1. A brief description of the applicant's background;

The Friends of the Volcano School of Arts & Sciences (VSAS) is a 501(c)3 nonprofit organization whose mission is to support the Volcano School of Arts & Sciences, a public charter school. Typical support activities include grant-writing, fundraising and holding assets for the school's use.

Friends of the VSAS will receive the grant funds and carry out procurement/contracting for the consultation, planning and design services described below. The Charter School Administrative Office (CSAO) has determined that the Friends of VSAS meets the requirements stipulated in HRS 42F-103.

#### 2. The goals and objectives related to the request;

The goals and objectives of this application are to plan and design the development of a K-8 campus on the site of the historic Keakealani School property in Volcano Village, Island of Hawaii.

An existing two classroom structure (1936) will be preserved, restored and become an integral part of the new campus design.

Planning will include community involvement, and design will include those needs for future construction of classrooms, an administrative facility, a multi-purpose building, parking and various support facilities needed to accommodate the school operations.

Features of the new campus may include, but not be limited to, solar electric generation, solar hot water generation (for normal uses, and for hydronic heating of the buildings), the provision for natural light and ventilation (no A/C is required at the 4000' altitude where the school is located), and the employment of renewable, "green" materials as is possible and practical.

In harmony with the rural setting, the structures will be small scale and take their design inspiration from those common to the rural communities where the school population is drawn from. The intent will be to create a “home-like” atmosphere for the students.

In addition to information obtained from community input, it is desired to involve selected students, teachers and stakeholders in the design process, working with the professional consultants to express the student point of view. As the design work proceeds, these same students can assist in presenting the design to the community. In addition, this project may serve as an educational opportunity for students to learn about career pathways related to project management, architecture, construction, public speaking, and community development.

The deliverables for this Planning and Design activity will include a complete set of construction documents and written specifications. Upon completion of these elements the permitting process will begin, concluding with a “shovel ready” project.

### **3. State the public purpose and need to be served**

The Friends of the VSAS now has the opportunity to assist in developing a permanent campus at Keakealani on Haunani Road, thus restoring the original intent of the Lee Family’s donation of this land in 1914 as a school for the children of Volcano, Hawaii. Sixth through eighth grades started classes in Fall 2011 in the historic two-room school house, with the basement adapted to provide two additional classrooms. Construction of additional classrooms is needed before the remaining elementary school and administrative staff can move from their current location to the new Keakealani site.

This project will retain the historic existing school building as a centerpiece of the campus, and add additional structures to provide classrooms and auxiliary spaces for up to 200 students total in grades K-8. An administration building and a multi-purpose building will be part of the development. It is the desire of the Friends of the VSAS, working closely with the VSAS school administration and Volcano community, to assist in the creating of a facility that uses leading edge technology towards energy self-sufficiency and new building materials that are “green” in their composition, yet at the same time respect the traditional rural architectural style that is one of the hallmarks of the Volcano community.

Being able to construct administration and additional classroom buildings at the Keakealani site will enable Friends of the VSAS to finally have a permanent educational facility. It will also maintain the original intent of the property donation as a school for the greater Volcano community. In keeping with the vision and mission of the school, the new Keakealani facility will incorporate community partnerships, responsibility for nature and the environment through its use of “green” building approaches and provide a solid academic foundation for students.

4. Describe the target population to be served

Friends serves the target population in many ways through our support role to VSAS. VSAS's current school enrollment for School Year 2011-2012 in grades K-8 is 173. The projected total school enrollment for School Year 2012-2013 is expected to be 194 due to the addition of a second Kindergarten class. At the end of the 2010-2011 school year, VSAS had a total of 124 students on the waiting list for all grades.

About half of the students reside in the Volcano area, and many students come from Mountain View, Na'alehu, and Ocean View. Other students travel from as far away as Hilo and Pahoa. 47% of the students enrolled at VSAS live within the Volcano area, 28% travel between 13-27 miles one way to attend school on a daily basis, and 25% of the students travel 30-50 miles one way to attend VSAS. The distance that students travel, the number of prospective students on the waiting list, and the average daily attendance (91.3% over the past four years), indicates not only satisfaction with the services that VSAS offers its students, but also the willingness of families to put forth the effort to ensure that their children are afforded a quality education.

Our students are of a diverse ethnic and socio-economic mix. In 2010-2011, the primary ethnicities reported by our students were: Caucasian (46%), Hawaiian or Part-Hawaiian (26%), Japanese (7%), Filipino (6%), Hispanic (3%), Black (3%), Portuguese (3%), American Indian (2%), Chinese (2%), and Samoan (2%). We estimate approximately half of the students are of mixed race. Most Hawaiian, Asian, Polynesian, Portuguese, and American Indian students are of mixed race while a few Caucasian, African-American, and Hispanic students are also of mixed race.

VSAS is currently in "*Good Standing, Unconditional*" status under the federal No Child Left Behind rankings. This speaks well for the quality of instruction and ability to support students at VSAS. Throughout the U.S., minority and low-income students have historically underperformed compared to their non-minority and middle- or high-income counterparts. At VSAS, considering that over half of the student population is comprised of minority students (54%) and considerably more than half (64%) of the students are eligible for free or reduced price lunch (indicating low-income status), we consider the school being able to meet the benchmarks under the No Child Left Behind signifies a great accomplishment. Low attrition rates for both students and faculty may be a contributing factor to these successes.

Other demographics include five students who predominantly speak a language other than English at home. The languages spoken at home for these students are Russian, Spanish, Japanese, and Polish. At this time, two of these students qualify for English Language Learner (ELL) services.

Additionally, 17% of the student population receives Special Education services. While this percentage is higher than the overall State average of 13%, the ability of VSAS to

adequately serve students within a truly inclusive educational environment has proven to be beneficial for students both academically and socially.

While the target population for this project will first and foremost be the students enrolled at Volcano School, the wider Volcano community, volunteers, and parents will benefit from the enhanced educational offerings and community service that the school provides, due to support from this project.

5. Describe the geographic coverage.

Friends of the VSAS is co-located with VSAS and serves the Puna and Ka'u districts in the southern region of the Island. The Keaau-Mt. View division is the region in Puna that is nearest the school, and Volcano and Fern Forest are the communities in the Keaau-Mt. View division that are most served by school. Volcano also serves the Ka'u division, representing about one-third of our students. Hawaiian Ocean View, Naalehu, and Pahala are the principle communities in Ka'u that are served by the school. These communities are spread over the countryside of the upper Puna and Ka'u districts, along about 65 miles of Highway 11.

According to the mostly recent available census data (Census 2000), the Puna region has a land area of 499 square miles and a population of 31,335, with about 63 persons per square mile, significantly higher than the county average. The Ka'u region is very sparsely populated, averaging only about 6 persons per square mile with a large land area of 922 square miles and a population of only 5,827. The district of Puna has the highest population growth in the state with about 51% percent change in population between 1990 and 2000. The district of Ka'u has had relatively high population growth of 31% between 1990 and 2000. Population in both the Puna and Ka'u districts is projected to continue to grow at about the same pace.

The Volcano area, which includes Volcano Village and neighboring communities, encompasses a land area of about 57 square miles with a population of 2,231 as of the Census 2000, about 39 persons per square mile and representative of the county average. About 46% of Volcano's population is female, only slightly under the state female population of about 50%.

Puna and Ka'u land usage is represented in the following table.

Land Use	Puna (acres)	Percent	Ka'u (acres)	Percent
Urban	6,431	2%	1,838	<1%
Conservation	138,538	43%	427,090	65%
Agricultural	175,064	55%	232,855	35%
Rural	140	<1%	0	0%

Both Ka'u and Puna have the highest agricultural land usage in the County. Ka'u has by far the highest conservation usage at over 427,000 acres, nearly double the next largest amount of conservation land of 236,315 acres in the district of Hamakua.

The population of Puna and Ka'u by race basically mirrors that of the island as a whole, with about 25% Asian alone, 10% Native Hawaiian and Other Pacific Islander alone, about 30% white alone, and about 30% two or more races, with small numbers of Black or African American alone, American Indian and Alaska Native alone, or some other race alone. Puna and Ka'u have slightly higher numbers of white alone and two or more races than the island average.

Median household income for Hawai'i County in 2000 was \$39,800, with mean income \$52,000. Median family income was \$46,500, with mean income \$58,400. Per capita income was \$18,800. Families receiving public assistance income had a mean income of only \$4,630.

Per capita, household and median income for regions and communities served by the school are presented in the following table.

The median income for all communities served by the school is relatively low with the Volcano area having the highest median income at \$35,977 per household, and about \$18,913 per capita. The lowest median household income is in Fern Forest at about \$24,519. The lowest median per capita income is in Pahala at about \$11,450, followed closely by Naalehu at \$11,755. The Ka'u division overall has a slightly lower median household income that is \$2,750 lower than the median household income in Keaau-Mt. View division. Median per capita income for the Ka'u and Keaau-Mt. View divisions is about equal at just over \$14,000. As of the year 2000, the number of families living below poverty level in Volcano was 10%, Naalehu was 17% and Pahala was 18%.

Hawai'i Island has an average of 2.75 persons per household, 3.24 persons per family. Volcano has smaller figures, with 2.25 persons per household and 2.92 per family. Other communities from which students attend (upper Puna, Ka'u) tend to have figures for both households and families that are larger than the island average. Puna has 5,000 single-family residence lots and 51,000 agricultural lots. Ka'u has 1,300 single-family residence lots and 15,400 agricultural lots.

Puna has had the fastest growing rate of residential construction on the island, based on permits issued. Commercial construction has also occurred, but not at as high a rate. This rapid increase of new residents has outpaced infrastructure, and has resulted in long-distance travel for many basic necessities. Ka'u has also experienced a recent boom in construction, though this seems to have slowed. Puna and Ka'u also have had the highest rate of vacant land sales, accounting for almost 4/5 of all land sales on the island in 2006. Median dollar values of both single-family homes and vacant land in Puna and Ka'u are the lowest on the island.

Unemployment in Hawai'i County is currently 8.7%. Looking at 2002 census update, Volcano had a significantly lower rate of unemployment and also had more females with children included in the work force. Other nearby communities in Puna had rates of unemployment higher than the island average, and in Ka'u unemployment rates for Naalehu and Pahala were nearly three times the island average. These communities also had very high rates of unemployment for females with children.

Hawai'i county projects that occupations of growth in the next five years will be mostly in service-related sectors (food preparation and serving, personal care and service), retail (sales), office and administration support, and construction and related trades of building/ground maintenance.

Volcano has a higher percentage of people with a Bachelor's degree or higher than most of the island (34% compared to average of 22%). However, other areas of Puna and Ka'u tend to have much lower rates of people with Bachelor's degrees than the county average. Some communities (Mountain View with 77%, Naalehu with 70%, Pahala with 62%) also have significantly lower rates of high school graduates than the island average (85%).

## **II. Service Summary and Outcomes**

The Service Summary shall include a detailed discussion of the applicant's approach to the request. The applicant shall clearly and concisely specify the results, outcomes, and measures of effectiveness from this request.

### **1. Describe the scope of work, tasks and responsibilities;**

Planning and Design activity will involve the development of a design program. This document will be an all-inclusive, exhaustive directive to the various consultants to guide them in meeting the desired goals and outcomes. It will include, but not be limited to:

#### Planning:

This activity will include:

- Site investigation and topographic surveys.
- Prioritization of needs and site capacity.
- Location and siting for the required structures and traffic flow/parking.
- Grading requirements, fencing, storm water control.
- Required and necessary community involvement.
- On-site wastewater disposal (IWS).
- On-site water catchment and storage; storage for potable water.

#### Design activity:

Will include, but not be limited to:

- The required classroom count, including toilet facilities and classroom storage.
- The required covered circulation pathways (it rains 130 inches a year at the site).
- An administrative building to contain administrative offices, meeting spaces, staff spaces, and storage for records.
- The school library (may or may not be a separate structure)
- A multi-purpose building that will include a large, open space for indoor play and gatherings – convertible for a cafeteria, a commercial kitchen, and such auxiliary spaces as may be required.
- Parking for 46 vehicles, including the school bus and two 15-passenger vans.
- Space for custodial requirements and storage
- Engineering activity:
  - At the core of the design mission is an intense concentration upon renewable energy in all the key areas involved. The investigation, design development, and final design will seek to address:
  - Renewable electric energy. Solar studies have been located which can support the needed data-base for the design of appropriate solar panel arrays, connection systems, and appropriate interconnects with the power grid.
  - Solar hot water generation. In addition to hot water for lavatory and kitchen needs, heated water will be used as the source for hydronic heating for all the classroom spaces, administrative spaces, and the multi-purpose building. It must be understood that at the 4000' elevation where the school is located, there is no need for artificial cooling, but there is a need for heating.
  - Direct solar heat: Through proper orientation and glazing, heat gain can be expected from the same solar sources as day-lighting for visual needs.
  - On site water collection: The 130 inch annual rainfall offers the opportunity for the collection and storage of rainwater for all non-potable needs which include toilet flushing, firefighting, hydronic heating, and other related needs.

**2. The applicant shall provide a projected annual timeline for accomplishing the results or outcomes of the service;**

The following is a preliminary timeline for the project, though until funding is received it is not possible to assign dates – therefore only in-process durations can be given.

Design Program preparation:

Development, writing and reproduction of the Design Program 3 weeks

Consultant selection:

Selection of Project Manager, Architects, Engineers, and EA Consultant 3 weeks

Planning phase:



Planning of site use and design, as detailed earlier 10 weeks

Design phase:

Preliminary design, internal review, design development, coordination of architecture and engineering designs	10 weeks
Construction documents & specifications	14 weeks
Draft Environmental Assessment	10 weeks
Presentations to the community, response to feedback	4 weeks
Final Environmental Assessment	4 weeks

Permitting phase:

Drafting of permit applications	2 weeks
Preliminary application approval for action	4 weeks
Permit routing and approvals from multiple agencies	16 weeks

Note: Because permits, once issued, will expire after a set period of time, it may be that it is determined to take the permit process up to, but not through, the final approval phase until more is known about the potential for CIP or other funding and the time cycle until that is available. Upon confirmation of this, the final permitting steps can be actualized while the construction cost bids are being solicited.

3. **The applicant shall describe its quality assurance and evaluation plans for the request. Specify how the applicant plans to monitor, evaluate, and improve their results; and**

Funding will be received by Friends of the Volcano School, a non-profit, 501(c)(3) entity whose mission is to support the Volcano School of Arts & Sciences. Friends will be the managing agency for the procurement of Planning and Design services, and as such has developed a procurement policy.

In its oversight role, Friends of the VSAS, working with the project manager, will ensure that this planning and design phase of the budget stays within the fund allotted, is consistent with the timeline shown above, and adheres to all best management practices.

4. **The applicant shall list the measure(s) of effectiveness that will be reported to the State agency through which grant funds are appropriated (the expending agency). The measure(s) will provide a standard and objective way for the State to assess the program's achievement or accomplishment. Please note that if the level of appropriation differs from the amount included in this application that the measure(s) of effectiveness will need to be updated and transmitted to the expending agency.**

The measures of effectiveness will be evaluated by the Friends of VSAS’s ability to adhere to the proposed timelines provided above. A facilities advisory committee will meet regularly for progress updates and to address any barriers, anticipated and unanticipated. Unexpected challenges will be addressed in a timely fashion to ensure that the project continues according to planned timelines.

The overall goal of this project is to plan and design the development of a K-8 campus on the Keakealani site in Volcano, Hawaii. The deliverables for this Planning and Design activity will include a complete set of construction documents and written specifications. Upon completion of these elements the permitting process will begin, concluding with a “shovel ready” project. Additional levels of scrutiny and quality assurance will be provided through the permitting process, which should take into account the preservation and restoration of a historical building as well as the use of renewable, “green” materials. The receipt of all applicable permits will indicate that the project is “shovel ready,” completing the Planning and Design phases of this project.

### III. Financial

#### Budget

- 1. The applicant shall submit a budget utilizing the enclosed budget forms as applicable, to detail the cost of the request.**

See attached Budget Requests forms.

- 2. The applicant shall provide its anticipated quarterly funding requests for the fiscal year 2012-2013.**

Quarter 1	Quarter 2	Quarter 3	Quarter 4	Total Grant
\$618,000.00				\$618,000.00

- 3. The applicant shall provide a listing of all other sources of funding that they are trying to obtain for fiscal year 2012-2013.**

Friends of VSAS has entered into a working partnership with the Volcano Art Center, another 501(c)(3) organization in close proximity to our charter school building site. Volcano Art Center has recently raised private funds for and completed a multi-million dollar facility for the arts. Through this partnership, Friends of VSAS has secured and is pursuing the donor list proved successful for the Volcano Art Center facility. Additionally, we have private funding pledges from a number of individuals and organizations within Volcano Village. We intend to move three high quality buildings from the existing campus to the new campus site, with a total value assigned to this future move of these buildings, all donated by Friends of the Volcano School of Arts & Sciences, of over \$300,000. A local architectural firm will make available topographical and other site plan data for the project, making possible the

development of artist's renderings of various campus alternatives, all with an approximate value of \$100,000.

- 4. The applicant shall provide a listing of all state and federal tax credits that have been granted within the prior three years. Additionally, the applicant shall provide a listing of all state and federal tax credits they have applied for or anticipate applying for pertaining to any capital project, if applicable.**

Not applicable. The Friends of the Volcano School of Arts & Sciences is a 501(c)(3) organization, and as a result our organization pays no taxes, therefore, does not have a status to apply for State or Federal tax credits.

#### **IV. Experience and Capability**

##### **A. Necessary Skills and Experience**

**The applicant shall demonstrate that it has the necessary skills, abilities, knowledge of, and experience relating to the request. State your experience and appropriateness for providing the service proposed in this application. The applicant shall also provide a listing of verifiable experience of related projects or contracts for the most recent three years that are pertinent to the request.**

Robert P. Smith, Chair of Friends of the Volcano School of Arts & Sciences, has had 30 years experiences in government service, much of it as an Administrator for the U.S. Fish and Wildlife Service and National Ocean Service (NOAA) in the insular Pacific. During this time, Mr. Smith has overseen the planning, design, and construction of facilities such as visitors centers associated with fourteen national wildlife refuges, the Keauhou Bird Conservation Center in Volcano, and the Mokupapapa Discovery Center in Hilo. His experience in the public sector included many instances of coordination with then Congressman, Neil Abercrombie and their joint successes in a wide variety of public facilities have left a lasting legacy in Hawaii and others in U.S. flag territories of the Pacific.

Serving as a facility advisory committee for the planning and development activities related to this GIA request are:

- Mr. Robert Smith, chair of the Friends of VSAS, will oversee the administration of the project activities. She has lived in Volcano, Hawaii since 1986 and worked for the Volcano Art Center as gallery manager for almost ten years. She is one of the founders of VSAS and had served on the local school board for several years before joining Friends of VSAS in 2005. Ms. Mattice may assign other Friends board members to specific tasks.

- Dr. Ardith Renteria, education director at Volcano School of Arts & Sciences, will represent the faculty and staff and oversee the design activity towards insuring that the school's educational requirements are met. As an educator in the Hawaii State public education system over the past 20 years, Dr. Renteria is able to contribute to the project by offering her knowledge of educationally conducive spaces for both learners and teachers.
- Ms. Nana-Honua Manuel, chair of the Volcano School of Arts & Sciences local school board will represent the board to provide input on all matters connected with the project and insure the board's ongoing participation. Besides owning her own business, she has worked as an office manager and bookkeeper at Volcano Golf Course and Country Club.
- The project manager, the projects architects and consulting engineers will be selected from qualified firms having fully staffed offices on the east side of Hawaii Island to insure crisp communication, awareness of the local environmental conditions, and ability to respond to in-process issues that are likely to come up during construction.

## **B. Facilities**

**The applicant shall provide a description of its facilities and demonstrate its adequacy in relation to the request. If facilities are not presently available, describe plans to secure facilities. Also describe how the facilities meet ADA requirements, as applicable.**

The Friends of VSAS is requesting a \$618,000 Grant in Aid from the State of Hawaii to assist VSAS in the planning and design of a K-8 school campus that will be located on 3.5 acres at the Keakealani site in Volcano, Hawaii.

Since opening Volcano's only charter school in 2001, maintaining an adequate and safe facility has been a major challenge for VSAS. The school is restricted by an expired lease, tents, and shared, cramped classrooms. Restrictions on the current lease make it impossible to realize the school's dream for a comprehensive campus at its current location.

There are many unique challenges for charter schools in Hawaii regarding building and maintaining facilities. These include inadequate funding by the state for facilities and maintenance; state requirements to obtain a building permit from the County Building Department for site occupancy; state permit requirements for approved water, fire, health, ventilation, and electrical systems; no county water for this region of the island, the environmental challenges of building in a tropical rainforest environment which averages over 120 inches of rain per year, and – unique to Volcano – the need to accommodate and mitigate the corrosive and ill-health effects of periodic vog inundation.

The Volcano School of Arts & Sciences initially opened within the Hawaii Volcanoes National Park in rental housing while another site was being examined as a possibility for a longer-term campus. Within the first year, we moved to our current location on Old

Volcano Road. This site had housed a sawmill and needed to be cleared of massive piles of rusted metal and other debris. Listed with the Division of Land and Natural Resources as a conservation site, our options were limited in terms of clearing the land and expanding the footprint beyond current existing Quonset structures, digging cesspools, etc. In various stages and with a resourceful community, paid and volunteer labor, we hauled out the trash, removed the non-native plants and planted native ones, refurbished and expanded the Quonsets, and erected three expedition-quality tents. Upon obtaining a building permit, we added a three-room wooden structure with attached covered lanai to house additional classes, completed and permitted for occupancy in August 2006.

VSAS is currently operating on two different campuses. One campus houses the elementary school serving grades K-5 and the school administration, and the other campus houses the middle school serving grades 6-8.

As a result of tremendous parent, staff and community effort, the following represents VSAS's current Elementary campus (on Old Volcano Road) with the following facilities:

- Grades K-5 each have their own classroom and private bathroom
- A multipurpose room provides a large open area for lunch and small assemblies, library space, a kitchen area with a refrigerator and stove, an adjacent large covered lanai space, and four separate bathrooms
- Counseling office
- Special Education classrooms and Educational Resource Manager office
- Administrative office space including the school front office
- Four classrooms for music, movement, Japanese language and culture, and art
- Two play areas
  - The lower elementary play area is a large cleared field, which is sectioned off for various grade levels—balls, jump ropes, hula hoops, student-led games, and movement instruction
  - The upper elementary play area is a large cleared space in front of the classrooms where students can play during recess
  - Both play areas have picnic tables and tree-shaded areas
- A covered greenhouse-type structure provides protection on rainy days, quiet space for individual and small group work, and special activities

At this campus, we have four different types of structures being used for classrooms. The three wooden frame classrooms were newly constructed in 2006 and are in good condition. The four Quonset buildings are in adequate condition although not optimal for learning. Additionally, we have three classrooms housed in expedition tents, which are marginal and need to be replaced as soon as possible. Resource and elective classes are held in the Quonset multipurpose room and a modified greenhouse structure.

The current campus is not ADA accessible as the restrictions on the current lease do not allow for the building of any new permanent structures. This inhibits the school's ability to grow as well as provide adequate access to students and visitors.

The middle school campus is located on what was originally the Keakealani School. The school was established on land donated by the Peter Lee family in 1915 and has been in Territorial/State ownership since. An original one-room building was built in that year and later replaced in 1936 with a two-room structure that remains in place. The Keakealani School was closed in 1974 and subsequently converted into a Department of Education (DOE) Outdoor Education Center which closed in 2009 due to funding restrictions. With the arrival of VSAS middle school it has now reverted back to its originally intended use. In June of 2010, VSAS entered into a lease agreement with the DOE for the facility and is currently using it to house the 6th, 7th and 8th grades. The building was improved to meet fire and safety codes in all regards, the basement was modified to use as two classrooms, and the building was inspected and approved prior to the current occupation.

The Middle School houses four classrooms in the Keakealani building, two classrooms upstairs and two downstairs. These classrooms are used for math, English language arts, science, and social studies instruction. Also upstairs is a small administrative office that may be able to comfortably fit one person with office supplies and equipment. Also upstairs is a certified kitchen that the faculty and staff use as a lounge and for additional tutoring space. Downstairs there are also restrooms for boys, girls, and staff. Since there is minimal classroom space, students are bused back to the elementary campus in the afternoons for electives and other resources.

The main floor of this facility is ADA accessible, and any new buildings that are erected at this site will meet building codes related to accessibility.

## **V. Personnel: Project Organization and Staffing**

### **A. Proposed Staffing, Staff Qualifications, Supervision and Training**

**The applicant shall describe the proposed staffing pattern and proposed service capacity appropriate for the viability of the request. The applicant shall provide the qualifications and experience of personnel for the request and shall describe its ability to supervise, train and provide administrative direction relative to the request.**

The Friends of Volcano School of Arts & Sciences is a supportive 501(c)(3) nonprofit corporation whose mission is to support VSAS, a there is a supportive 501(c)(3) nonprofit corporation whose mission is to support VSAS.

The Friends of the VSAS has in the past, and continues to rely on the expertise of Mr. Boone Morrison, AIA, architect, will serve as the Director of Keakealani Campus Development. As an architect, he will provide in-house expertise in the areas of Planning and Design activities in preparation for the construction phase of this long-range project. Mr. Morrison is a 40 year resident of the community and is well experienced in the

unique design requirements of the environment with its' many challenges. He has been a practicing architect for 35 years and is President of Boone Morrison Architects, Inc, with offices in Volcano Village. He will be the direct liaison between the school and the Consultants and the primary contact person for all activity related to the Project.

In the past, Mr. Morrison designed and supervised the construction of the three-classroom portable building for VSAS located on the original campus. This previously housed the middle school students, and now houses the upper elementary students. In the course of his career, Mr. Morrison has worked on more than 130 individual projects, including commercial, historic restoration, and the design/construction of an operating railroad on Kauai with a construction value of more than \$3 million.

Mr. Morrison's role in this project will be to oversee the activity of the architects and engineers who will be engaged for this project. He will serve as the point of contact for the boards, the architects, consultants, and engineers, ensuring accurate and timely exchanges of information.

Friends of Volcano School of Arts and Sciences members:

- Robert Smith, Chair
- David Goodman, Treasurer
- Mark Mattice, Secretary
- James MataBishop
- Dennis LaPointe
- Ranalynn Naipo
- Julie Williams
- Nana Manuel

Also serving as a facility advisory committee for the planning and development activities related to this GIA request are:

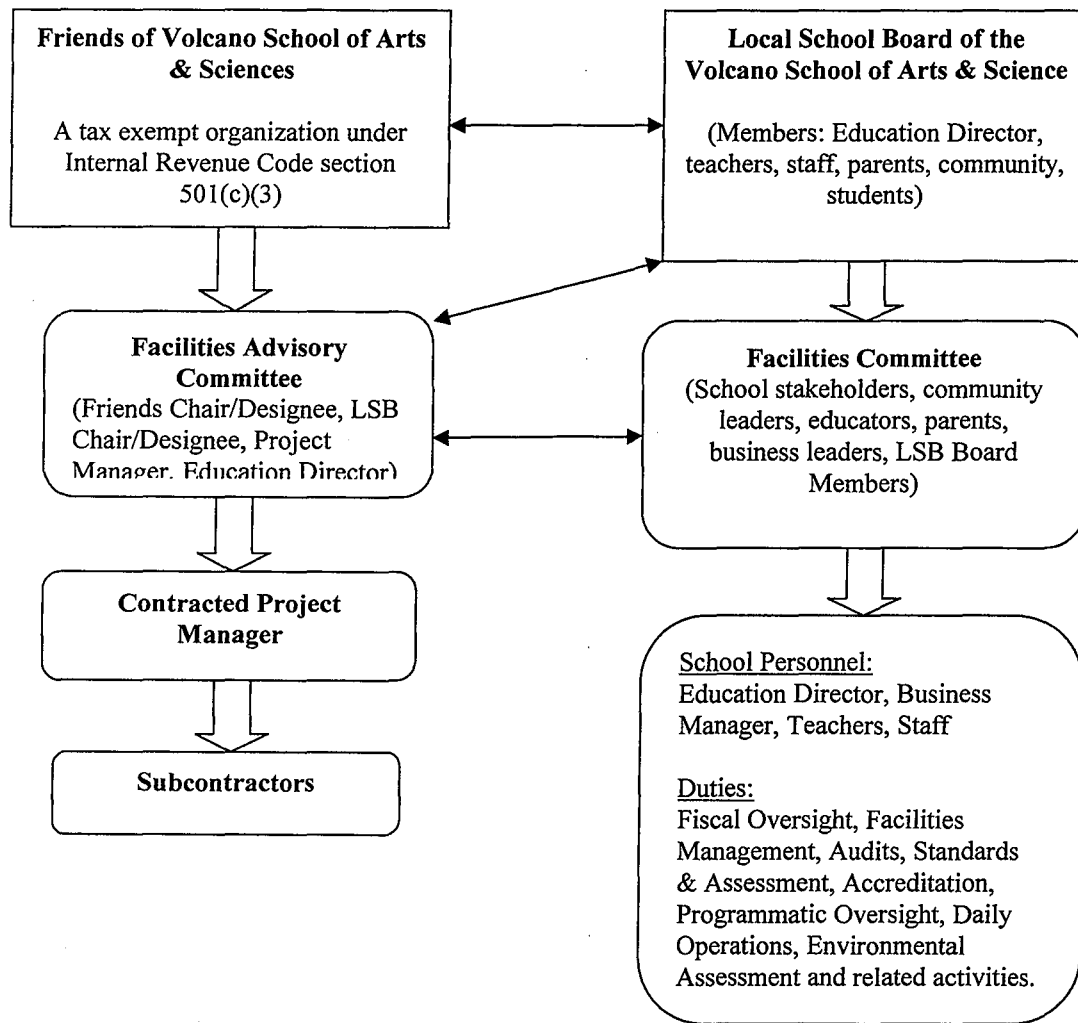
- Mr. Robert Smith, chair of the Friends of VSAS board of directors, will oversee the administration of the project activities. He has lived in Volcano, Hawaii since 1994 and planned and carried out the Keauhou Bird Conservation Center in Volcano as well as the Mokupapapa Discovery Center in Hilo. He has served as the Chair for the Local School Board for VSAS before accepting the position of Chair of the Friends of VSAS in 2012.
- Dr. Ardith Renteria, director of education at Volcano School of Arts & Sciences, will represent the faculty and staff and oversee the design activity towards insuring that the school's educational requirements are met. As an educator in the Hawaii state public education system over the past 20 years, Dr. Renteria is able to contribute to the project by offering her knowledge of educationally conducive spaces for both learners and teachers.
- Ms. Nana-Honua Manuel, chair of the Volcano School of Arts & Sciences local school board will represent the board to provide input on all matters connected with the project and insure the board's ongoing participation. Besides owning her

own business, she has worked as an office manager and bookkeeper at Volcano Golf Course and Country Club.

- The project manager, project architects and consulting engineers will be selected from qualified firms having fully staffed offices on the east side of Hawaii Island to insure crisp communication, awareness of the local environmental conditions, and ability to respond to in-process issues that are likely to come up during construction.

**B. Organization Chart**

The applicant shall illustrate the position of each staff and line of responsibility/supervision. If the request is part of a large, multi-purpose organization, include an organizational chart that illustrates the placement of this request.





## **VI. Other**

### **A. Litigation**

The applicant shall disclose any pending litigation to which they are a party, including the disclosure of any outstanding judgement. If applicable, please explain.

There is no pending litigation.

### **B. Licensure or Accreditation**

Specify any special qualifications, including but not limited to licensure or accreditation that applicant possesses relevant to this request.

VSAS was duly chartered as a public charter school by the State Board of Education in 2001.

In 2011, VSAS was accredited by the Western Association of Schools and Colleges Accrediting Commission for Schools (WASC). It was awarded a three-year accreditation term, the maximum term awarded for new applicants and is one of only seven elementary schools in the State to be accredited.

**DECLARATION STATEMENT  
APPLICANTS FOR GRANTS AND SUBSIDIES  
CHAPTER 42F, HAWAII REVISED STATUTES**

The undersigned authorized representative of the applicant acknowledges that said applicant meets and will comply with all of the following standards for the award of grants and subsidies pursuant to section 42F-103, Hawaii Revised Statutes:

- (1) Is licensed or accredited, in accordance with federal, state, or county statutes, rules, or ordinances, to conduct the activities or provide the services for which a grant or subsidy is awarded;
- (2) Comply with all applicable federal and state laws prohibiting discrimination against any person on the basis of race, color, national origin, religion, creed, sex, age, sexual orientation, or disability;
- (3) Agree not to use state funds for entertainment or lobbying activities; and
- (4) Allow the state agency to which funds for the grant or subsidy were appropriated for expenditure, legislative committees and their staff, and the auditor full access to their records, reports, files, and other related documents and information for purposes of monitoring, measuring the effectiveness, and ensuring the proper expenditure of the grant or subsidy.

In addition, a grant or subsidy may be made to an organization only if the organization:

- (1) Is incorporated under the laws of the State; and
- (2) Has bylaws or policies that describe the manner in which the activities or services for which a grant or subsidy is awarded shall be conducted or provided.

Further, a grant or subsidy may be awarded to a non-profit organization only if the organization:

- (1) Has been determined and designated to be a non-profit organization by the Internal Revenue Service; and
- (2) Has a governing board whose members have no material conflict of interest and serve without compensation.

For a grant or subsidy used for the acquisition of land, when the organization discontinues the activities or services on the land acquired for which the grant or subsidy was awarded and disposes of the land in fee simple or by lease, the organization shall negotiate with the expending agency for a lump sum or installment repayment to the State of the amount of the grant or subsidy used for the acquisition of the land.

Further, the undersigned authorized representative certifies that this statement is true and correct to the best of the applicant's knowledge.

Friends of the Volcano School of Arts & Sciences

(Typed Name of Individual or Organization)



(Signature)

1/27/2012

(Date)

ROBERT P. SMITH


(Typed Name)

Chair, Friends of the VSAS

(Title)

**BUDGET REQUEST BY SOURCE OF FUNDS**  
(Period: July 1, 2012 to June 30, 2013)

Applicant: \_\_\_\_\_ Friends of the Volcano School of Arts & Sciences

BUDGET CATEGORIES	Total State Funds Requested	(b)	(c)	(d)
	(a)			
<b>A. PERSONNEL COST</b>				
1. Salaries				
2. Payroll Taxes & Assessments				
3. Fringe Benefits				
<b>TOTAL PERSONNEL COST</b>				
<b>B. OTHER CURRENT EXPENSES</b>				
1. Airfare, Inter-Island				
2. Insurance				
3. Lease/Rental of Equipment				
4. Lease/Rental of Space				
5. Staff Training				
6. Supplies				
7. Telecommunication				
8. Utilities				
9				
10				
11				
12				
13				
14				
15				
16				
17				
18				
19				
20				
<b>TOTAL OTHER CURRENT EXPENSES</b>				
<b>C. EQUIPMENT PURCHASES</b>				
<b>D. MOTOR VEHICLE PURCHASES</b>				
<b>E. CAPITAL</b>	<b>618,000</b>			
<b>TOTAL (A+B+C+D+E)</b>	<b>618,000</b>			
<b>SOURCES OF FUNDING</b>		Budget Prepared By:		
(a) Total State Funds Requested	618,000	Robert P. Smith	808-342-1036	
(b)		Name (Please type or print)	Phone	
(c)			1/27/2012	
(d)		Signature of Authorized Official	Date	
<b>TOTAL BUDGET</b>	<b>618,000</b>	Robert P. Smith	Chair, Friend of the Volcano School of Arts	
		Name and Title (Please type or print)	& Sciences	

## BUDGET JUSTIFICATION PERSONNEL - SALARIES AND WAGES

Applicant: \_\_\_\_\_

**Friends of the Volcano School of Arts & Sciences**  
Period: July 1, 2012 to June 30, 2013

POSITION TITLE	FULL TIME EQUIVALENT	ANNUAL SALARY A	% OF TIME ALLOCATED TO GRANT REQUEST B	TOTAL STATE FUNDS REQUESTED (A x B)
				\$ -
				\$ -
				\$ -
				\$ -
				\$ -
				\$ -
				\$ -
				\$ -
				\$ -
				\$ -
				\$ -
				\$ -
				\$ -
				\$ -
				\$ -
<b>TOTAL:</b>				
<b>JUSTIFICATION/COMMENTS:</b> All members of Friends of the Volcano School of Arts & Sciences are non-paid volunteers. It is known that position titles of contract employees will include, Project Manager, Architect(s), and consulting engineers will build their salaries into future contracts.				

## BUDGET JUSTIFICATION - EQUIPMENT AND MOTOR VEHICLES

Applicant: Friends of the Volcano School of Arts a      Period: July 1, 2012 to June 30, 2013

DESCRIPTION EQUIPMENT	NO. OF ITEMS	COST PER ITEM	TOTAL COST	TOTAL BUDGETED
None			\$ -	
			\$ -	
			\$ -	
			\$ -	
			\$ -	
<b>TOTAL:</b>				
<b>JUSTIFICATION/COMMENTS:</b>				

DESCRIPTION OF MOTOR VEHICLE	NO. OF VEHICLES	COST PER VEHICLE	TOTAL COST	TOTAL BUDGETED
None			\$ -	
			\$ -	
			\$ -	
			\$ -	
			\$ -	
<b>TOTAL:</b>				
<b>JUSTIFICATION/COMMENTS:</b>				

## BUDGET JUSTIFICATION CAPITAL PROJECT DETAILS

Applicant: Friends of the Volcano School of Art:

Period: July 1, 2012 to June 30, 2013

FUNDING AMOUNT REQUESTED						
TOTAL PROJECT COST	ALL SOURCES OF FUNDS RECEIVED IN PRIOR YEARS		STATE FUNDS REQUESTED	OF FUNDS REQUESTED	FUNDING REQUIRED IN SUCCEEDING YEARS	
	FY: 2010-2011	FY: 2011-2012	FY:2012-2013	FY:2012-2013	FY:2013-2014	FY:2014-2015
PLANS			185000			
LAND ACQUISITION						
DESIGN			433000			
CONSTRUCTION						
EQUIPMENT						
<b>TOTAL:</b>			<b>618,000</b>			
<b>JUSTIFICATION/COMMENTS:</b>						