

**Neil Abercrombie**  
Governor

**Maunalei Love**  
Executive Director



**Charter School Administrative Office**

1111 Bishop Street, Suite 516  
Honolulu, Hawaii 96813  
Tel: 586-3775 Fax: 586-3776

January 14, 2011

TO: Senate Committee on Ways and Means  
FROM: Maunalei Love, Executive Director CSAO  
RE: Budget Briefing Testimony

Chair David Ige, Vice Chair Michelle Kidani and members of the committee, Aloha, I am Maunalei Love, Executive Director of the CSAO. I want to thank the chair and the entire committee for the time and effort being spent to address the issue of properly funding the public charter schools.

**Mission Statement:**

Each charter school, as a unique and autonomous organization, has created their own mission statement. In general the mission statements of charter schools recognize their connection to their communities and their commitment to providing high quality and effective teaching in order to positively impact student learning.

The mission of the Charter Schools Administrative Office is to provide advocacy, assistance and support for the development, growth, progress and success of charter schools and the charter school system in Hawai'i in accordance with applicable state and federal laws.

**Economic Impact**

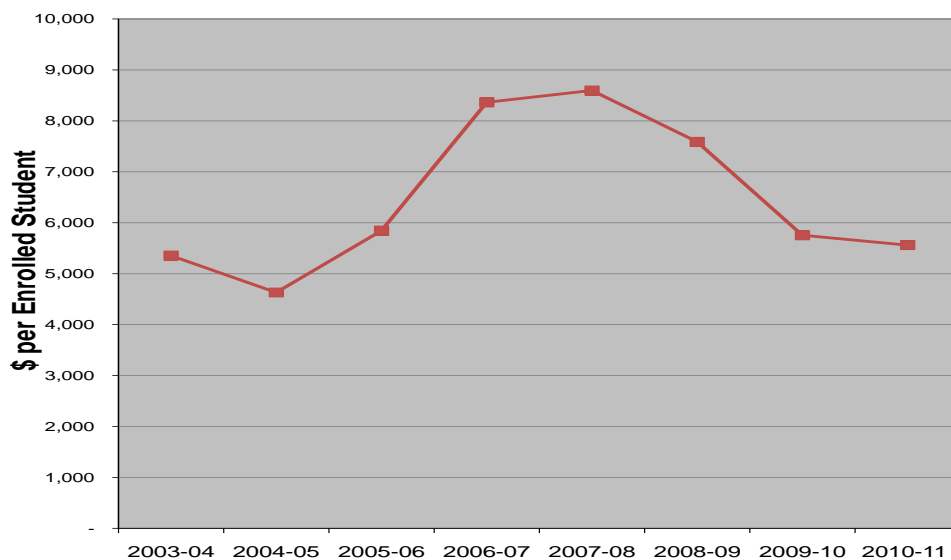
The current economic conditions have impacted the charter schools in fiscal year 2010-11 in several ways. While the total amount appropriated for charter schools in the state budget has increased in most years, there was a 19.25% decrease in state funding for charter schools in 2009-10.

Year	Total State Funding	Funding Change Over Prior year	Charter Schools OEC	Enrollment Growth Over Prior Year
2008-09	57,695,518	9.48%	7,603	24.01%
2009-10	46,589,252	-19.25%	8,098	6.51%
2010-11	50,184,560	7.72%	9,026	11.46%
2011-12*	60,667,896	20.89%	9,912	9.82%

\* Governor's recommended funding, charter schools projected enrollment

Increasing enrollment without proportionate funding increases has led to declining per pupil funding for charter schools in each of the past three years. For example, the enrollment increase from school year 2009-10 to 2010-11 exceeded 11%. The state per pupil funding over the same period increased only 7.7%. This resulted in the per pupil funding decreasing from \$6,258 in 2009-10 (including ARRA Education Fund) to \$5,874 in 2010-11(including ARRA Education Fund them to), a 6.6% decrease over one year. The table below summarizes the per pupil funding for charter schools over the past 8 years.

**\$ Per Student Charter Schools**



Years	Charter Schools	
	CS Enrollment	CS Per Pupil \$
2003-04	4,317	\$5,355.00
2004-05	4,964	\$4,630.47
2005-06	5,744	\$5,844.21
2006-07	5,812	\$8,363.30
2007-08	6,131	\$8,595.84
2008-09	7,603	\$7,588.52
2009-10	8,098	\$5,753.18
2010-11	9,026	\$5,560.00

As can be seen from the table and chart above, the per pupil funding amount for charter schools in 2010-11 was less than the per pupil amount provided six years earlier in fiscal year 2005-06.

The Governor’s recommendation to fund charter schools at a per pupil amount of \$6,195.66 in fiscal year 2011-12 is a positive movement in the right direction. However there are still gaps that remain in the funding system for charter schools. The most significant remaining gap is in the funding for charter school facilities. With the exception of one year, 2006-07, charter schools have not been appropriated additional funds for facilities costs. In fiscal year 2010-11 a small appropriation was made equal to \$197 per pupil for charter school facilities (\$1,778,122). However the funding for this was obtained by reducing the operating per pupil funding for charter schools.

Recently the *Charter Schools Funding Task Force*, created by Senate Concurrent Resolution 108, issued their final report. In this report the Task Force recommends, among other things, that a “needs based” formula be established to provide funding for charter schools facilities. The Charter Schools Administrative Office strongly supports this recommendation. The application of a needs based facilities funding formula for charter schools in fiscal year 2011-12 will greatly assist charter schools that are struggling financially due to the cuts imposed over the past few years. A needs based formula will also address the concerns that have been raised regarding differing needs for different charter schools. For example, the Task Force recommendation provides that an adjustment in the facilities funding be made for charter schools that are occupying State owned facilities.

Prior to the release of the Charter Schools Funding Task Force report, the CSAO submitted its budget request to the Department of Budget and Finance, including an item for facilities funding using the formula in HRS 302B-8. The amount of this request was \$11.3 million in 2011-12 and \$12.2 million in 2012-13.

However, with the release of the Charter School Funding Task Force report, the CSAO defers to the recommendation in that report to use a needs based formula to fund facilities for charter schools. Because the Task Force report was only recently finalized and distributed on

January 5, 2011, the CSAO has not yet been able to calculate the cost of using the needs based formula suggested in the report.

Another recommendation in the Task Force report is to include in the formula for the calculation of the operating funding for charter schools the amount appropriated for neighbor island R&M contained in the State Budget line item AGS 807. This appropriation has never been included in the formula used to calculate the per pupil funding for charter schools even though the purpose of the appropriation is to address minor R&M costs for public schools located on islands other than Oahu. R&M costs for Oahu public schools are appropriated in EDN 400 and have been included in the formula calculation for charter schools.

Other funding disparities and/or service delivery disparities continue to exist between the DOE system and the Charter School system. Two examples of this are the amounts allocated by the DOE from Federal funding sources and the delivery of SPED services particularly for small charter schools. A thorough analysis of these disparities in fiscal year 2009-10 is available in Appendix 3 to the Charter Schools Funding Task Force Report.

**Alternatives Considered:**

In keeping with the autonomous nature of charter schools, the decreases in funding have been absorbed by a variety of means identified by each charter school's Local School Board. Some of the charter schools foresaw that the economic situation could change in earlier years and have relied on funds saved for economic uncertainties in prior years to help balance their budgets over the past few years. Some have used funds earmarked for other purposes (e.g. building funds) to balance their budgets. These are short-term solutions.

To some extent all of the charter schools have had to cut their spending. For most this also means cutting their labor costs. Some of the charter schools have saved on labor costs by reducing the number of positions (teachers, support staff and others). During the 2009-10 school year the charter schools self reported staffing reductions equal to 137.75 FTE positions.

Actual cash donations to charter schools have been self reported by 24 of the 31 charter schools for a total of \$9.6 million for fiscal year 2009-10 and a projected amount of \$8.0 million in 2010-11. While this support is helpful it also comes with strings attached and has been an element of the support for these charter schools for many years.

Charter schools have also shifted costs to other programs where appropriate (e.g. when supplanting is allowed). The most striking example of this is the use of the American Recovery and Reinvestment Act funding appropriated by the legislature in 2010-11. \$2,835,696 in

personnel costs were shifted from state funding sources to federal funding under this funding source.

On behalf of the Public Charter Schools, mahalo for the opportunity to discuss these issues with you and mahalo for your continuing support for the public charter schools of Hawaii.

Department of Education - Charter Schools  
Department-wide Budget Summary

Table 1

Fiscal Year (FY) 2011				
Act 180/10 Appropriation (a)	Restriction (b)	Emergency Appropriation (c)	Total FY11 (d)	MOF
\$ 53,761,508.00			\$ 53,761,508.00	A
			\$ -	B
			\$ -	N
			\$ -	T
			\$ -	U
\$ 2,835,696.00			\$ 2,835,696.00	V
			\$ -	W
			\$ -	X
\$ 56,597,204.00	\$ -	\$ -	\$ 56,597,204.00	Total
Fiscal Year (FY) 2012				
Act 180/10 Appropriation (a)	Reductions (b)	Additions (c)	Total FY12 (d)	MOF
\$ 58,285,279.00		\$ 13,876,502.00	\$ 72,161,781.00	A
			\$ -	B
			\$ -	N
			\$ -	T
			\$ -	U
			\$ -	V
			\$ -	W
			\$ -	X
\$ 58,285,279.00	\$ -	\$ 13,876,502.00	\$ 72,161,781.00	Total
Fiscal Year (FY) 2013				
Act 180/10 Appropriation (a)	Reductions (b)	Additions (c)	Total FY13 (d)	MOF
\$ 58,285,279.00		\$ 19,412,336.00	\$ 77,697,615.00	A
			\$ -	B
			\$ -	N
			\$ -	T
			\$ -	U
			\$ -	V
			\$ -	W
			\$ -	X
\$ 58,285,279.00	\$ -	\$ 19,412,336.00	\$ 77,697,615.00	Total

Department of Education - Charter Schools  
Priority List of Functions

Table 2

Pri #	<u>Description of Function</u>	<u>Activities</u>	<u>Prog ID(s)</u>	<u>Statutory Reference</u>
1	Provide educational services to students choosing to attend charter schools	Planning, design and delivery of classroom instruction and the management and supervision of school programs and facilities	EDN600	302B
2	Provide community outreach services for parents and other community members	Adult learning programs, community service programs, Pre-K programs	EDN600	

Department of Education - Charter Schools  
Resources by Program ID

Table 3

<u>Prog ID/Org</u>	<u>Program Title</u>	<u>As budgeted in Act 180/10 (FY11)</u>			<u>Governor's Submittal (FY12)</u>			<u>Governor's Submittal (FY13)</u>			<u>MOF</u>
		<u>Pos (P)</u>	<u>Pos (T)</u>	<u>\$\$\$</u>	<u>Pos (P)</u>	<u>Pos (T)</u>	<u>\$\$\$</u>	<u>Pos (P)</u>	<u>Pos (T)</u>	<u>\$\$\$</u>	
EDN600	DOE - Charter Schools			\$ 53,761,508.00			\$ 60,667,896.00			\$ 65,308,445.00	A
EDB600	DOE - Charter Schools			\$ 2,835,696.00			\$ -			\$ -	V



Department of Education - Charter Schools  
Current Year (FY11) Restrictions

Table 4

<u>Prog ID</u>	<u>Restriction \$\$\$</u>	<u>Impact</u>	<u>MOF</u>
EDN600	\$ 3,443,046.00	Due to action of Budget Proviso 39 limiting the per pupil operating funding amount to \$5,363.	A
EDN600	\$ 124,548.00	Due to action of Budget Proviso 39.1 limiting the per pupil facilities funding to \$197	A

Department of Education - Charter Schools  
Proposed FY12 and FY13 Reductions

Table 5

<u>Description of Reduction</u>	<u>Impact of Reduction</u>	<u>Prog ID</u>	<u>Pos (P)</u>	<u>Pos (T)</u>	<u>\$\$\$</u>	<u>Pos (P)</u>	<u>Pos (T)</u>	<u>\$\$\$</u>	<u>MOF</u>	<u>Carry-over? (Y/N)</u>
			<u>FY12</u>	<u>FY12</u>	<u>FY12</u>	<u>FY13</u>	<u>FY13</u>	<u>FY13</u>		
NONE										

Department of Education - Charter Schools  
Proposed FY12 and FY13 Additions

Table 6

<u>Type</u> <u>(FE / HS/ O)</u>	<u>Description of Addition</u>	<u>Prog ID</u>	<u>Pos (P)</u> <u>FY12</u>	<u>Pos (T)</u> <u>FY12</u>	<u>\$\$\$ FY12</u>	<u>Pos (P)</u> <u>FY13</u>	<u>Pos (T)</u> <u>FY13</u>	<u>\$\$\$ FY13</u>	<u>MOF</u>
O	Operating Per Pupil Funding	EDN600			\$ 2,570,478.00			\$ 7,233,175.00	A

Department of Education - Charter Schools  
 Operating Budget Requests to the New Administration

Table 7

<u>Description of Addition</u>	<u>Prog ID</u>	<u>Pos (P)</u>	<u>Pos (T)</u>	<u>\$\$\$ FY12</u>	<u>Pos (P)</u>	<u>Pos (T)</u>	<u>\$\$\$ FY13</u>	<u>MOF</u>	
		<u>FY12</u>	<u>FY12</u>		<u>FY13</u>	<u>FY13</u>			
Facilities Funding Using DOE Debt Service/Pupil as the b	EDN600			\$ 11,306,024.00			\$ 12,179,161.00		A

Department of Education - Charter Schools  
Non-general funds (excluding Federal Funds)

Table 8

<u>Name of Fund</u>	<u>Unencumbered Cash Balance</u>	<u>MOF</u>	<u>Statutory Reference</u>	<u>Charter School Name</u>
None	N/A	N/A	HRS 302B-12 (c)	CSAO
Ka Huli O Haloa - Kamehameha Schools Ho`olako Like Grant	0.00	don	HRS 302B-12 (c)	Hakipu'u
Individual Donations	1,830.38	don	HRS 302B-12 (c)	Hakipu'u
Student Fees	1,526.15	W	HRS 302B-12 (c)	Hakipu'u
Special Events	390.00	B	HRS 302B-12 (c)	Hakipu'u
Interest	0.00	B	HRS 302B-12 (c)	Hakipu'u
Ka Huli O Haloa - Kamehameha Schools Kui O Ka Lono Grant	0.00	don	HRS 302B-12 (c)	Hakipu'u
Ka Huli O Haloa - Kamehameha Schools Ho`olako Like Grant- Math Teacher	0.00	don	HRS 302B-12 (c)	Hakipu'u
None	N/A	N/A	HRS 302B-12 (c)	Kanuikapono
None	N/A	N/A	HRS 302B-12 (c)	Kihei
Parent's Budget Donation	32,360.00	Parents/Community	HRS 302B-12 (c)	Waialae
Friends of the Leeward Coast Charter School	0.00	B	HRS 302B-12 (c)	Ka Waihona
Akamai Glass Company	0.00	B	HRS 302B-12 (c)	Ka Waihona
Council for Native Hawaiian Advancement	0.00	B	HRS 302B-12 (c)	Ka Waihona
Magic Island Productions	0.00	B	HRS 302B-12 (c)	Ka Waihona
Boxtops 4Education	0.00	B	HRS 302B-12 (c)	Ka Waihona
Kamehameha Schools	0.00	B	HRS 302B-12 (c)	Ka Waihona
Helping Hands	0.00	B	HRS 302B-12 (c)	Ka Waihona
A+ Fees	0.00	W	HRS 302B-12 (c)	Ka Waihona
Lunch Fees	0.00	W	HRS 302B-12 (c)	Ka Waihona
Uniform Sales	0.00	W	HRS 302B-12 (c)	Ka Waihona
University of Hawaii	0.00	B	HRS 302B-12 (c)	Ka Waihona
Interest	0.00	B	HRS 302B-12 (c)	Ka 'Umeke Ka'eo
School Fees	0.00	W	HRS 302B-12 (c)	Ka 'Umeke Ka'eo
Kako'o Ka 'Umeke, Inc.	0.00	B	HRS 302B-12 (c)	Ka 'Umeke Ka'eo
KAANA	0.00	N/A	HRS 302B-12 (c)	KANAKA
Kamehameha School Ho'olokolike Program	201,543.00	Don	HRS 302B-12 (c)	Ke Ana La'ahana
Office of Hawaiian Affairs	65,200.00	Don	HRS 302B-12 (c)	Ke Ana La'ahana
School Level Accounts-Student Fees	15,000.00	W	HRS 302B-12 (c)	Ke Ana La'ahana
Ho'okako'o Matching Funds	0.00	DON	HRS 302B-6 (e) (4)	Kualapu'u
Interest Income	2,115.07	B	HRS 302B-12 (c)	Kualapu'u
Sales - Food Service, Cash Sales	0.00	W	HRS 302B-12 (c)	Kualapu'u
Grant - Friendly Isle United Way	0.00	Don	HRS 302B-12 (c)	Kualapu'u
Fees - School charges for NSF Checks payable to KUU	25.00	W	HRS 302B-12 (c)	Kualapu'u
Local School Funds	32,172.32	W	HRS 302B-12 (c)	Kualapu'u
Sales - Contracted Bus Service, Ridership fees	3,465.00	W	HRS 302B-12 (c)	Kualapu'u
Kamehameha Schools	296,485.00	Don	HRS 302B-12 (c)	Kanu O Ka Aina
OHA	93,920.00	Don	HRS 302B-12 (c)	Kanu O Ka Aina

Department of Education - Charter Schools  
Non-general funds (excluding Federal Funds)

Table 8

School Store	172,575.00	W	HRS 302B-12 (c)	Kanu O Ka Aina
Kamehameha Schools Ho'olako Like funds	0.00	Don	HRS 302B-12 (c)	Kamakau
Kamehameha Schools Accreditation funds	0.00	Don	HRS 302B-12 (c)	Kamakau
OHA funds	0.00	Don	HRS 302B-12 (c)	Kamakau
Misc. revenue (e.g. Student fees, special events, uniforms, meals, bank interest)	0.00	W	HRS 302B-12 (c)	Kamakau
Ho'okako'o Corporation	N/A	N/A	HRS 302B-6 (e) (4)	Waimea Middle
CPCS A+ Income	0.00	W	HRS 302B-12 (c)	Connections PCS
Transportion	0.00	W	HRS 302B-12 (c)	Connections PCS
Donations	314.70	W	HRS 302B-12 (c)	Connections PCS
Hawaii Youth Network	0.00	B	HRS 302B-12 (c)	Connections PCS
Coelition of Essential Schools	0.00	B	HRS 302B-12 (c)	Connections PCS
Yearbook Sales	0.00	W	HRS 302B-12 (c)	Connections PCS
Nutrition Funding	0.00	W	HRS 302B-12 (c)	Connections PCS
Interest/Investment income	17,559.00	B	HRS 302B-12 (c)	Connections PCS
sublease	0.00	B	HRS 302B-12 (c)	Connections PCS
Fundraising	0.00	W	HRS 302B-12 (c)	Connections PCS
Bank Rewards Program	0.00	B	HRS 302B-12 (c)	Connections PCS
Recycling	136.00	B	HRS 302B-12 (c)	Connections PCS
MSS Grant	0.00	B	HRS 302B-12 (c)	Connections PCS
NOAA BWET Grant	0.00	B	HRS 302B-12 (c)	Connections PCS
Summer School	335.00	W	HRS 302B-12 (c)	Myron B. Thompson
General:Driver's Ed, Computer Fee	0.00	W	HRS 302B-12 (c)	Myron B. Thompson
None	N/A	N/A	HRS 302B-12 (c)	Innovations
Kamehameha Schools (Ho'olako Like)	159,300.00	Don	HRS 302B-12 (c)	Nawahi
OHA	0.00	Don	HRS 302B-12 (c)	Nawahi
School Fees (student activity fee, protocol fees, and communication fees)	17,485.10	W	HRS 302B-12 (c)	Nawahi
Lunch Fees (full and reduced price for students)	8,734.33	W	HRS 302B-12 (c)	Nawahi
Afterschool Program Fees (A+ fee)	17,529.00	W	HRS 302B-12 (c)	Nawahi
Public Schools of Hawaii Foundation (Good Idea Grant - Ola Hou SY 10-11)	2,966.76	Don	HRS 302B-12 (c)	Nawahi
Helping Hands Grant (Ha'ena Project)	500.00	Don	HRS 302B-12 (c)	Nawahi
American Savings Bank (Bank for Education)	887.50	Don	HRS 302B-12 (c)	Nawahi
Student Supply Fees	0.00	W	HRS 302B-12 (c)	Voyager
Uniform Sales	0.00	W	HRS 302B-12 (c)	Voyager
Lunch/Breakfast Fees	0.00	W	HRS 302B-12 (c)	Voyager
Snack sales	0.00	W	HRS 302B-12 (c)	Voyager
Fieldtrips	0.00	W	HRS 302B-12 (c)	Voyager
NSF/Late pickup Fees	0.00	W	HRS 302B-12 (c)	Voyager
interest	0.00	W	HRS 302B-12 (c)	Voyager
Students Fees	0.00	W	HRS 302B-12 (c)	West Hawaii Explortions Academy

Department of Education - Charter Schools  
Non-general funds (excluding Federal Funds)

Table 8

Soda Machine	159.81	W	HRS 302B-12 (c)	West Hawaii Explortions Academy
6, 7th, 8th Grade Fundraising	0.00	W	HRS 302B-12 (c)	West Hawaii Explortions Academy
Summer School Program	0.00	W	HRS 302B-12 (c)	West Hawaii Explortions Academy
Annual Fair	1,459.08	W	HRS 302B-12 (c)	West Hawaii Explortions Academy
After school fees	0.00	W	HRS 302B-12 (c)	West Hawaii Explortions Academy
Camp Erdman	0.00	W	HRS 302B-12 (c)	West Hawaii Explortions Academy
Field Trips	0.00	W	HRS 302B-12 (c)	West Hawaii Explortions Academy
Aloha Kai	0.00	W	HRS 302B-12 (c)	West Hawaii Explortions Academy
Donations	2,890.00	Don	HRS 302B-12 (c)	West Hawaii Explortions Academy
Ironman	193.74	Don	HRS 302B-12 (c)	West Hawaii Explortions Academy
Memory of McKown	695.00	Don	HRS 302B-12 (c)	West Hawaii Explortions Academy
None	N/A	N/A	HRS 302B-12 (c)	Kua O Ka La
Kamehameha Schools Ho'olako Like funds	0.00	Don	HRS 302B-12 (c)	Halau Lokahi
OHA funds	0.00	Don	HRS 302B-12 (c)	Halau Lokahi
Misc. revenue (e.g. Student fees, special events, uniforms, bank interest)	0.00	W	HRS 302B-12 (c)	Halau Lokahi
HIKI	0.00	D	HRS 302B-12 (c)	Ke Kula Niihau O Kekaha
Ho'olako Like	0.00	D	HRS 302B-12 (c)	Ke Kula Niihau O Kekaha
Ai Pono	0.00	D	HRS 302B-12 (c)	Ke Kula Niihau O Kekaha
OHA	0.00	D	HRS 302B-12 (c)	Ke Kula Niihau O Kekaha
Kaluaiko'olau Project	0.00	W	HRS 302B-12 (c)	Ke Kula Niihau O Kekaha
Donations	0.00	W	HRS 302B-12 (c)	Ke Kula Niihau O Kekaha
Ho'okoko'o Matching Fund	0.00	Don	HRS 302B-6 (e) (4)	Kamaile
Local School Funds	101,698.00	W	HRS 302B-12 (c)	Kamaile
Interest Income	10,181.40	W	HRS 302B-12 (c)	Kamaile
Interest	0.00	B	HRS 302B-12 (c)	Hawaii Technology Academy
Various External Donors	0.00	Don	HRS 302B-12 (c)	Education Laboratory
Goodwill Industries - SEE Program	0.00	B	HRS 302B-12 (c)	Waters of Life
Alu Like, Inc. On the Job Training Program	0.00	B	HRS 302B-12 (c)	Waters of Life
Fundraisers	2,348.00	B	HRS 302B-12 (c)	Waters of Life
Student lunch program-student reimbursements	0.00	W	HRS 302B-12 (c)	Waters of Life
School Uniform Donations	0.00	W	HRS 302B-12 (c)	Waters of Life
Student Council Income	641.67	W	HRS 302B-12 (c)	Lanikai Elementary PCS
Lunch Collections	809.16	W	HRS 302B-12 (c)	Lanikai Elementary PCS
Field Trip Income	19,880.73	W	HRS 302B-12 (c)	Lanikai Elementary PCS
Yearbook Income	95.00	W	HRS 302B-12 (c)	Lanikai Elementary PCS
Library Income	0.00	W	HRS 302B-12 (c)	Lanikai Elementary PCS
Interest Income	1,326.68	B	HRS 302B-12 (c)	Lanikai Elementary PCS
Recycling Income	3,354.94	B	HRS 302B-12 (c)	Lanikai Elementary PCS
Facilities Use Income	1,058.00	B	HRS 302B-12 (c)	Lanikai Elementary PCS
Donations	52,467.90	Don	HRS 302B-12 (c)	Lanikai Elementary PCS

Department of Education - Charter Schools  
 Non-general funds (excluding Federal Funds)

Table 8

Grade Level Fundraising/Donations	0.00	Don	HRS 302B-12 (c)	Lanikai Elementary PCS
None	N/A	N/A	HRS 302B-12 (c)	Kona Pacific
Kamehameha	0.00	Don	HRS 302B-12 (c)	Halau Ku Mana NCPCS
Student Fees	5,368.20	W	HRS 302B-12 (c)	Halau Ku Mana NCPCS
Fundraising Fees	0.00	Don	HRS 302B-12 (c)	Halau Ku Mana NCPCS
None	N/A	N/A	HRS 302B-12 (c)	Hawaii Academy of Arts & Sciences
SLK, Inc. (non-profit)	0.00	B	HRS 302B-12 (c)	Kawaikini
Kokua Hawai'i Foundation	0.00	B	HRS 302B-12 (c)	Kawaikini
National Weather Association	0.00	B	HRS 302B-12 (c)	Kawaikini
Kauai Economic Development Board	0.00	B	HRS 302B-12 (c)	Kawaikini
Rotary Club of Poipu	0.00	B	HRS 302B-12 (c)	Kawaikini
David Boynton Grant	0.00	B	HRS 302B-12 (c)	Kawaikini
Parent's Lunch payments	0.00	W	HRS 302B-12 (c)	Kawaikini
Parent Group Fundraising	0.00	W	HRS 302B-12 (c)	Kawaikini
Friends of the Volcano School of Arts & Sciences	0.00	B	HRS 302B-12 (c)	Volcano
User Fees (parent collections for bus, lunch program, etc.)	0.00	W	HRS 302B-12 (c)	Volcano
Volcano Health Collaborative	746.00	B	HRS 302B-12 (c)	Volcano
Unrestricted Donations (Safeway, True Value)	82.00	B	HRS 302B-12 (c)	Volcano
In-School Fundraisers	0.00	B	HRS 302B-12 (c)	Volcano



Department of Education - Charter Schools  
Emergency Appropriation Requests

Table 9

<u>Prog ID</u>	<u>Description of Request</u>	<u>FTE</u>	<u>\$\$\$</u>	<u>MOF</u>
NONE				

Department of Education - Charter Schools  
Budget Decisions

Table 10

Prog ID/Org	Description	MOF	Department Request FY12			Department Request FY13			Budget & Finance FY12			Budget & Finance FY13			Governor's Decision FY12			Governor's Decision FY13		
			Pos (P)	Pos (T)	\$\$\$	Pos (P)	Pos (T)	\$\$\$	Pos (P)	Pos (T)	\$\$\$	Pos (P)	Pos (T)	\$\$\$	Pos (P)	Pos (T)	\$\$\$	Pos (P)	Pos (T)	\$\$\$
EDN600	Budget Ceiling Amount	A			\$ 58,321,027			\$ 58,321,027			\$ 58,321,027			\$ 58,321,027			\$ 58,321,027			\$ 58,321,027
EDN600	Per Pupil Funding based on formula and enrollment increases				\$ 2,570,478			\$ 7,233,175			\$ 2,346,869			\$ 6,987,418			\$ 2,346,869			\$ 6,987,418
EDN600	Facilities Funding based on formula (debt service) and projected enrollments				\$ 11,306,024			\$ 12,171,769			\$ -			\$ -			\$ -			\$ -

Department of Education - Charter Schools  
Vacancy Report

Table 11

<u>Date of Vacancy</u>	<u>Position Title</u>	<u>Position Number</u>	<u>Exempt (Y/N)</u>	<u>Budgeted Amount</u>	<u>Actual Salary Last Paid</u>	<u>MOF</u>	<u>Prog ID</u>	<u>Authority to Hire (Y/N)</u>	<u>Charter School Name</u>
7/1/2010	Innovations Team Leader	N/A	Y	60,000.00	0.00	A	15137	Y	CSAO
7/1/2010	Acct. Clerk	N/A	Y	30,000.00	0.00	A	15137	Y	CSAO
7/27/2010	Community Resource Specialist - Video Technology	N/A	Y	18,619.00	0.00	don	KS Grant	Y	Hakipu'u
None	N/A	N/A	N/A	N/A	N/A	N/A	N/A	N/A	Kanuikaponu
7/1/2010	High School SPED Teacher	N/A	Y	48,008.00	0.00	A	NA	NA	Kihei
7/26/2010	Technology Facilitator	C1037	N	54,305.04	54,305.04	A	15137	Y	Waialae
None	N/A	N/A	N/A	N/A	N/A	N/A	N/A	N/A	Ka Waihona
11/17/2010	Teacher	10061677	N	58,959.00	2,456.63	A	15137	Y	Ka 'Umeke Ka'eo
None	N/A	N/A	N/A	N/A	N/A	N/A	N/A	N/A	KANAKA
4/17/2010	SASA	801020	Y	35,000.00	18,886.00	A	15137	Y	Ke Ana La'ahana
None	N/A	N/A	N/A	N/A	N/A	N/A	N/A	N/A	Kualapu'u
None	N/A	N/A	N/A	N/A	N/A	N/A	N/A	N/A	Kanu O Ka Aina
None	N/A	N/A	N/A	N/A	N/A	N/A	N/A	N/A	Kamakau
None	N/A	N/A	N/A	N/A	N/A	N/A	N/A	N/A	Waimea Middle
None	N/A	N/A	N/A	N/A	N/A	N/A	N/A	N/A	Connections
None	N/A	N/A	N/A	N/A	N/A	N/A	N/A	N/A	Myron B. Thompson
None	N/A	N/A	N/A	N/A	N/A	N/A	N/A	N/A	Innovations
None	N/A	N/A	N/A	N/A	N/A	N/A	N/A	N/A	Nawahi
7/28/2010	Spanish	C1137	Y	17,100.00	17,100.00	A	15137	N/A	Voyager
7/23/2009	Art	C1136	Y	17,935.56	17,935.56	A	15137	N/A	Voyager
7/23/2009	VACANT/(Educationa Asst.)	800237	Y	0.00	0.00	A	15137	N/A	Voyager
5/30/2008	Enrichment Coordinator	800378	Y	32,242.32	32,242.32	A	15137	N/A	Voyager
7/26/2007	VACANT/(Educationa Asst.)	56727	Y	0.00	0.00	A	15137	N/A	Voyager
3/15/2007	Office Coordinator	800412	Y	25,659.72	25,659.72	A	15137	N/A	Voyager
7/26/2010	Secondary Teacher	C5035	Y	25,713.00	25,713.00	A	15137	Y	WHEA PCS
7/26/2010	Secondary Teacher	C5043	Y	46,609.00	46,609.00	A	15137	Y	WHEA PCS
None	N/A	N/A	N/A	N/A	N/A	N/A	N/A	N/A	Kua O Ka La
None	N/A	N/A	N/A	N/A	N/A	N/A	N/A	N/A	Halau Lokahi
None	N/A	N/A	N/A	N/A	N/A	N/A	N/A	N/A	Ke Kula Niihau O Kekaha
6/27/2005	Clerk II	59589	N	25,000.00	0.00	A	15137	Y	Kamaile
7/1/2009	EA III (50% FTE)	53268	N	15,000.00	0.00	A	15137	Y	Kamaile
7/28/2010	EA III (100% FTE)	47120	N	0.00	0.00	B	17131	Y	Kamaile
None	N/A	N/A	N/A	N/A	N/A	N/A	N/A	N/A	Hawaii Technology Academy
8/1/2010	Business Manager	N/A	Y	51,312.00	0.00	A	15137	N/A	Education Laboratory
10/15/2010	Bus Monitor	N/A	Y	4,939.00	1,620.38	B	N/A	Y	Waters of Life
8/26/2010	Principal/Administrator	C4000	Y	107,292.00	107,292.00	A	15137	Y	Lanikai Elementary PCS
None	N/A	N/A	N/A	N/A	N/A	N/A	N/A	N/A	Kona Pacific
None	N/A	N/A	N/A	N/A	N/A	N/A	N/A	N/A	Halau Ku Mana NCPCS

Department of Education - Charter Schools  
 Vacancy Report

Table 11

None	N/A	N/A	N/A	N/A	N/A	N/A	N/A	N/A	N/A	Hawaii Academy of Arts & Sciences
None	N/A	N/A	N/A	N/A	N/A	N/A	N/A	N/A	N/A	Kawaikini
None	N/A	N/A	N/A	N/A	N/A	N/A	N/A	N/A	N/A	Volcano

Department of Education - Charter Schools  
Personnel Separations

Table 12

Separation Date	Prog ID/Org	Position Number	Perm/ Temp	MOF	Position Title	Budgeted FTE	Budgeted Salary	Actual FTE	Actual Salary	BU Code	SR Level	Charter School Name
6/4/2010	15137/734	N/A	J1	A	Federal Program Manager	1.00	50,000.00	1.00	50,000.00	N/A	N/A	Charter School Admin Office
7/21/2010	18057 & 18053/734	N/A	J1	N	Federal Programs Liason (MM)	1.00	40,000.00	1.00	40,000.00	N/A	N/A	Charter School Admin Office
10/30/2009	18057 & 18053/734	N/A	J1	N	Federal Programs Liason (DK)	1.00	40,000.00	1.00	40,000.00	N/A	N/A	Charter School Admin Office
6/30/2010	17131/546	800368	T1	A	SPED EA III	1.00	25,030.00	1.00	25,030.00	3	SR12A	Hakipu'u
7/26/2010	15137/546	C4046	J1	A	Secondary Teacher/Advisor	1.00	48,008.00	1.00	48,008.00	5	T0306	Hakipu'u
7/26/2010	15137/546	C4058	J1	A	Article VI Teacher	1.00	49,448.16	1.00	49,448.00	5	T0307	Hakipu'u
7/26/2010	15137/546	Ceridian 18	J1	A	Secondary Teacher/Advisor	1.00	39,900.96	1.00	39,900.96	5	T0403	Hakipu'u
7/31/2010	15137/546	Ceridian 2	J1	A	Office Clerk	0.375	8,619.00	0.45	10,395.45	3	N/A	Hakipu'u
6/15/2010	OHA grant/546	ceridian 60116	T1	A	Math Coach	0.60	17,600.00	0.60	17,600.00	5	T0201	Hakipu'u
10/1/2010	15137/564	N/A	J1	A	Teacher	1.00	50,000.00	1.00	50,000.00	5	N/A	Kanuikaponono
10/15/2010	15137/564	N/A	J1	A	Project Leader/Facilities Development	1.00	33,000.00	1.00	33,000.00	N/A	N/A	Kanuikaponono
6/30/2010	17131/554	C6056	J1	A	HS SPED	1.00	44,817.00	1.00	43,975.00	5	na	Kihei
6/30/2010	17131/554	C6055	J1	A	K8 SPED	1.00	43,153.00	1.00	40,200.00	5	na	Kihei
6/30/2010	15137/554	60022	J1	A	HS TEACHER	1.00	51,920.00	1.00	48,368.00	5	na	Kihei
6/30/2010	15137/554	90059	J1	A	HS TEACHER	1.00	50,408.00	1.00	46,959.00	5	na	Kihei
6/30/2010	15137/554	90040	J1	A	HS TEACHER	1.00	48,003.00	1.00	44,719.00	5	na	Kihei
4/30/2010	17131 & 15137/554	801229	T1	A	EDUCATIONAL ASSISTANT	1.00	37,485.00	1.00	30,431.00	3	na	Kihei
8/13/2010	15137/554	90048	J1	A	CLERK	1.00	35,064.00	1.00	4,419.00	3	na	Kihei
6/30/2010	15137/554	90026	J1	A	CLERK	1.00	28,455.00	1.00	28,109.00	3	na	Kihei
7/23/2009	15137/149	C1006	J1	A	Teacher	1.00	46,488.00	1.00	46,488.00	05	W0106	Waialae
7/23/2009	15137/149	C1038	J1	A	Teacher	1.00	65,510.16	1.00	65,510.16	05	W02AA	Waialae
7/23/2010	15137/149	C1037	J1	A	Teacher	1.00	39,888.00	1.00	39,888.00	05	W0403	Waialae
7/23/2010	15137/149	C1033	J1	A	Teacher	1.00	48,744.00	1.00	48,744.00	05	W0205	Waialae
7/23/2010	15137/149	C1022	J1	A	Teacher	1.00	50,208.00	1.00	50,208.00	05	W0206	Waialae
7/23/2010	15137/149	C1006	J1	A	Teacher	1.00	50,208.00	1.00	50,208.00	05	W0206	Waialae
7/23/2010	15137/149	C1038	J1	A	Teacher	1.00	50,208.00	1.00	50,208.00	05	W0206	Waialae
7/23/2010	15137/149	C1035	J1	A	Teacher	1.00	48,744.00	1.00	48,744.00	05	W0205	Waialae
7/2/2010	15137/545	800518	T1	B	Educational Assistant	1.00	10.95/hour	1.00	10.95/hour	03	8R06	Ka Waihona
7/27/2010	15137/545	10010061	T1	A	Sped Teacher	1.00	54,184.08	1.00	54,184.08	05	K0408	Ka Waihona
4/15/2010	15137/545	800348	T1	B	Educational Assistant	1.00	11.39/hour	1.00	11.39/hour	03	SR06	Ka Waihona
2/28/2010	15137/545	800353	T1	B	Pub Health/Med Care Para Pro	1.00	21,096.00	1.00	21,096.00	63	SRNA	Ka Waihona
12/21/2009	15137/545	10066593	T1	A	Elem Teacher	1.00	35,099.04	1.00	35,099.04	05	K0202	Ka Waihona
8/5/2010	15137/545	801048	T1	B	Educational Assistant	1.00	23,130.00	1.00	23,130.00	03	SR10	Ka Waihona
4/23/2010	15137/545	800775	T1	A	Maintenance	1.00	31,596.00	1.00	31,596.00	01	SRNA	Ka Waihona
7/28/2010	15137/545	10004780	T1	A	Elem Teacher	1.00	54,184.08	1.00	54,184.08	05	K0408	Ka Waihona
11/17/2010	15137/562	10061677	J1	A	Teacher	1.00	58,959.00	1.00	58,959.00	3	SR20	Ka 'Umeke Ka'eo
None	N/A	N/A	N/A	N/A	N/A	N/A	N/A	N/A	N/A	N/A	N/A	KANAKA
6/30/2010	15137/549	C5092	T1	A	Student Services Coordinator	1.00	55,000.00	1.00	66,032.40	5	T0508	Ke Ana La'ahana
8/31/2010	17131/549	C5122	T1	N	SPED Teacher	1.00	0.00	1.00	51,426.00	5	T0506	Ke Ana La'ahana
4/17/2010	15137/549	801020	T1	A	SASA	1.00	35,000.00	1.00	32,376.00	3	SRNA	Ke Ana La'ahana
None	N/A	N/A	N/A	N/A	N/A	N/A	N/A	N/A	N/A	N/A	N/A	Kualapu'u
5/1/2010	15137/397	N/A	J1	A	Secondary Teacher	1.00	45,000.00	1.00	44,452.00	5	T0206	Kanu O Ka Aina
7/1/2010	15137/397	N/A	J1	A	Elementary Teacher	1.00	45,000.00	1.00	33,694.00	5	T0202	Kanu O Ka Aina
7/1/2010	15137/397	N/A	J1	A	Secondary Teacher	1.00	45,000.00	1.00	44,452.00	5	T0206	Kanu O Ka Aina
7/1/2010	15137/397	N/A	J1	A	Secondary Teacher	0.50	45,000.00	0.50	30,114.00	5	T0101	Kanu O Ka Aina
7/1/2010	15137/397	N/A	J1	A	Teacher Article VI	1.00	45,000.00	1.00	55,622.00	5	T0607	Kanu O Ka Aina
8/5/2010	15137/397	N/A	J1	A	Elementary Teacher	1.00	45,000.00	1.00	45,785.00	5	T0207	Kanu O Ka Aina
10/21/2010	15137/397	N/A	J1	A	Secondary Teacher	1.00	45,000.00	1.00	44,452.00	5	T0206	Kanu O Ka Aina
10/22/2010	15137/397	N/A	J1	A	PCS Director	1.00	115,000.00	1.00	113,147.00	6	E0811	Kanu O Ka Aina
None	N/A	N/A	N/A	N/A	N/A	N/A	N/A	N/A	N/A	N/A	N/A	Kamakau

Department of Education - Charter Schools  
Personnel Separations

Table 12

12/31/2009	15137/394	C5270	T1	A	Elem Teacher	1.00	60,729.12	1.00	60,729.12	5	T0708	Waimea Middle
4/20/2010	15137/394	59538	T1	A	School Custodian II	1.00	33,228.00	1.00	33,228.00	1	BC02A	Waimea Middle
5/13/2010	15137/394	C5214	T1	A	12-Mo Student Svcs Coord	1.00	58,959.12	1.00	58,959.12	5	T0707	Waimea Middle
7/27/2010	15137/394	C5179	T1	A	Secondary Teacher	0.50	24,004.08	0.50	24,004.08	5	T0306	Waimea Middle
7/27/2010	15137/394	C5212	T1	A	Elem Teacher	1.00	53,483.04	1.00	53,483.04	5	T0507	Waimea Middle
7/27/2010	15137/394	C5184	T1	A	Counselor	1.00	35,328.96	1.00	35,328.96	5	T0301	Waimea Middle
7/27/2010	15137/394	C5278	T1	A	Secondary Teacher	1.00	56,195.04	1.00	56,195.04	5	T0410	Waimea Middle
7/27/2010	15137/394	C5200	T1	A	Secondary Teacher	1.00	51,426.00	1.00	51,426.00	5	T0407	Waimea Middle
7/27/2010	15137/394	C5233	T1	A	Secondary Teacher	1.00	34,704.96	1.00	34,704.96	5	T0203	Waimea Middle
5/10/2010	15137/394	55483	T1	A	Clerk III	1.00	26,700.00	1.00	26,700.00	3	SR08B	Waimea Middle
12/31/2009	15953/394	10053774	T1	A	TEACHER	1.00	NA	1.00	13,630.00	5	T0201	Connections
2/12/2010	15137/396	Ceridian 20099	T1	A	SCHOOL SECURITY	1.00	27,756.00	0.475	12,840.72	NA	NA	Connections
6/4/2010	15137/396	Ceridian 20101	T1	A	SCHOOL SECURITY	1.00	27,756.00	0.475	15,635.97	NA	NA	Connections
7/28/2010	15137/396	Ceridian 20055	T1	A	TEACHER	1.00	52,429.00	1.00	52,429.00	05	T0605	Connections
7/28/2010	15137/396	Ceridain 20028	T1	A	TEACHER	1.00	50,931.00	1.00	50,931.00	05	T0308	Connections
7/28/2010	15953/396	10121452	T1	A	TEACHER	1.00	NA	1.00	46,609.00	05	T0305	Connections
8/30/2010	15137/396	Ceridian 20005	T1	A	SCHOOL SECURITY	1.00	27,756.00	1.00	27,756.00	03	SR5F	Connections
8/30/2010	15137/396	Ceridian 20022	T1	A	SASA	1.00	32,424.00	1.00	32,424.00	03	SR12C	Connections
10/29/2010	15137/396	Ceridian 20037	T1	A	TEACHER	1.00	48,008.00	1.00	48,008.00	05	T0306	Connections
6/30/2009	15137/544	C1098	J1	B	Special Education Teacher	1.00	70,464.00	1.00	\$70,464.00	5	T06AA	Myron B. Thompson
7/27/2009	15137/544	C1120	J1	A	Secondary Teacher	1.00	52,966.00	1.00	\$52,966.00	5	T04-8	Myron B. Thompson
7/27/2009	15137/544	C1106	J1	A	Secondary Teacher	1.00	44,460.00	1.00	\$44,460.00	5	T02-6	Myron B. Thompson
7/27/2009	15137/544	C1074	T1	A	Secondary Teacher	0.50	24,720.00	0.50	\$24,720.00	5	T03-7	Myron B. Thompson
7/27/2009	15137/544	000019	T1	A	Secondary Teacher	0.50	24,720.00	0.50	\$24,720.00	5	T03-7	Myron B. Thompson
7/27/2009	15137/544	C1128	J1	A	Elementary Teacher	0.50	16,848.00	0.50	\$16,848.00	5	T02-2	Myron B. Thompson
7/27/2010	15137/544	C1114	J1	A	Elementary Teacher	1.00	49,000.00	1.00	\$49,440.00	5	T03-7	Myron B. Thompson
7/27/2010	15137/544	C1087	J1	A	Secondary Teacher	1.00	30,000.00	1.00	\$32,713.00	5	T02-1	Myron B. Thompson
7/27/2010	15137/544	30048	T1	A	Secondary Teacher	0.50	25,000.00	0.50	\$30,000.00	5	N/A	Myron B. Thompson
7/27/2010	15137/544	30042	T1	A	Secondary Teacher	0.50	25,000.00	0.50	\$30,000.00	5	N/A	Myron B. Thompson
7/27/2010	15137/544	C1128	T1	A	Spanish Teacher	0.50	25,000.00	0.50	\$30,000.00	5	T03-01	Myron B. Thompson
7/27/2010	15137/544	C1130	J1	A	Elementary Teacher	1.00	46,000.00	1.00	\$46,608.00	5	T03-05	Myron B. Thompson
7/27/2010	15137/544	116624	J1	A	Clerk Typist III	1.00	33,756.00	1.00	\$43,200.00	3	SR12D	Myron B. Thompson
7/27/2010	15137/544	C1149	T1	A	French	0.50	25,000.00	0.50	\$30,000.00	5	T03-1	Myron B. Thompson
9/8/2010	15137/544	C1113	J1	A	Secondary Teacher	1.00	46,608.00	1.00	\$46,608.00	5	T03-5	Myron B. Thompson
6/30/2010	15137/548	C5063	J1	A	12-Mo Elem Teacher	1.00	99,324.00	1.00	99,324.00	5	T07BB	Innovations
7/25/2010	15137/548	C5254	J1	A	Elem - Sec Teacher	1.00	46,608.00	1.00	46,608.00	5	T0305	Innovations
8/15/2009	15137/563	N/A	T1	A	Janitor II	0.50	33,228.00	0.50	33,228.00	2	BC02	Nawahi
1/15/2010	15137/563	N/A	T1	A	Account Clerk III	1.00	27,756.00	1.00	27,756.00	3	SR08 C	Nawahi
8/15/2010	15137/563	N/A	T1	A	EA Farmer Assistant	0.50	25,668.00	0.50	25,668.00	3	SR08 A	Nawahi
11/5/2010	15137/541	VOY001	T1	A	SPED TEACHER	1.00	49,448.04	1.00	49,448.04	5	N/A	Voyager
7/28/2010	15137/541	C1050	T1	A	Elem Teacher	1.00	49,448.16	1.00	49,448.16	5	N/A	Voyager
7/27/2010	15137/541	C1137	T1	A	SPANISH TEACHER	0.50	17,100.00	0.50	17,100.00	5	N/A	Voyager
7/27/2010	15137/541	C1045	T1	A	Elem Teacher	1.00	52,968.00	1.00	52,968.00	5	N/A	Voyager
7/23/2009	15137/541	C1136	T1	A	ART TEACHER	0.50	17,935.56	0.50	17,935.56	5	N/A	Voyager
7/23/2009	15137/541	C1127	T1	A	ARTICLE VI TEACHER	0.50	25,848.00	0.50	25,848.00	5	N/A	Voyager
7/23/2009	15137/541	C1051	T1	A	Elem Teacher	1.00	50,190.00	1.00	50,190.00	5	N/A	Voyager
7/1/2007	15137/541	800378	T1	A	Enrichment Coordinator	0.75	32,242.00	0.75	32,242.00	13	N/A	Voyager
7/26/2007	15137/541	56727	T1	A	EA III	0.75	\$9.83/hour	0.75	\$9.83/hour	3	N/A	Voyager
7/23/2007	15137/541	800237	T1	A	EA III	0.75	\$9.83/hour	0.75	\$9.83/hour	3	N/A	Voyager
3/14/2007	15137/541	800412	T1	A	Office Coordinator	1.00	25,659.72	1.00	25,659.72	3	N/A	Voyager
7/28/2010	15137/399	C5043	J1	A	Secondary Teacher	1.00	46,609.00	1.00	46,609.00	05	T0305	West Hawaii Explorations Academy
7/23/2009	15137/399	C5035	J1	A	Secondary Teacher	1.00	25,713.00	0.50	25,713.00	05	T0407	West Hawaii Explorations Academy
11/19/2009	15137/399	C5043	J1	A	Secondary Teacher	1.00	49,448.00	1.00	49,448.00	05	T0307	West Hawaii Explorations Academy
7/23/2010	15137/557	C5246	J1	A	Gen Educ/Article VI Teacher	1.00	4,414.00	1.00	4,414.00	5	T0408	Kua O Ka La
8/31/2009	15137/542	00034	J1	A	Cultural Resource	1.00	34,008.00	1.00	34,008.00	5	n/a	Halau Lokahi
8/15/2009	15137/542	70023	J1	A	Educational Assistant	1.00	26,496.00	1.00	26,496.00	5	n/a	Halau Lokahi
8/31/2009	15137/542	70034	J1	A	Cultural Resource	1.00	34,008.00	1.00	34,008.00	5	n/a	Halau Lokahi

Department of Education - Charter Schools  
Personnel Separations

Table 12

8/31/2009	15137/542	70032	J1	A	Administrative Assistant	1.00	37,992.00	1.00	37,992.00	3	n/a	Halau Lokahi
8/15/2009	15137/542	70028	J1	A	Teacher	1.00	33,000.00	1.00	33,000.00	5	n/a	Halau Lokahi
8/15/2009	15137/542	00018	J1	A	Educational Assistant	1.00	33,600.00	1.00	33,600.00	5	n/a	Halau Lokahi
8/15/2009	15137/542	70035	J1	A	Technology Support Staff	1.00	24,000.00	1.00	24,000.00	3	n/a	Halau Lokahi
8/15/2009	15137/542	70006	J1	A	Educational Assistant	1.00	33,288.00	1.00	33,288.00	5	n/a	Halau Lokahi
6/30/2010	15137/542	70026	J1	A	Teacher	1.00	45,000.00	1.00	45,000.00	5	n/a	Halau Lokahi
2/19/2010	15137/542	00006	J1	A	Teacher	1.00	31,992.00	1.00	31,992.00	5	n/a	Halau Lokahi
8/31/2009	15137/542	70036	J1	A	Technology Support Staff	1.00	37,992.00	1.00	37,992.00	5	n/a	Halau Lokahi
7/31/2009	15137/542	70024	J1	A	Teacher	1.00	34,992.00	1.00	34,992.00	5	n/a	Halau Lokahi
7/31/2009	15137/542	70014	J1	A	Teacher	1.00	36,000.00	1.00	36,000.00	5	n/a	Halau Lokahi
8/31/2009	15137/542	00005	J1	A	Teacher	1.00	49,920.00	1.00	49,920.00	5	n/a	Halau Lokahi
8/5/2009	17131/542	C1117	J1	N	Sped Teacher	1.00	49,448.00	1.00	49,448.00	5	T03-07	Halau Lokahi
7/15/2010	15137/542	00024	J1	A	Teacher	1.00	36,000.00	1.00	36,000.00	5	n/a	Halau Lokahi
8/31/2009	15137/542	00027	J1	A	Technology Support Staff	1.00	31,992.00	1.00	31,992.00	3	n/a	Halau Lokahi
None	N/A	N/A	N/A	N/A	N/A	N/A	N/A	N/A	N/A	N/A	N/A	Ke Kula Niihau O Kekaha
7/26/2010	15953/275	C3109	T1	B	Elementary Teacher (Article VI)	1.00	0.00	1.00	43,157.04	5	T02/05	Kamaile
7/26/2010	17131/275	C3091	T1	B	Special Education Teacher (SPED)	1.00	0.00	1.00	40,566.96	5	A02/01	Kamaile
7/26/2010	15137/275	C3055	T1	A	Elementary Teacher	1.00	45,000.00	1.00	46,608.96	5	T03/05	Kamaile
7/26/2010	15137/275	C3075	T1	A	Elementary Teacher	1.00	45,000.00	1.00	43,157.04	5	T02/05	Kamaile
7/26/2010	15137/275	C3074	T1	A	Elementary Teacher	1.00	45,000.00	1.00	43,157.04	5	T02/05	Kamaile
7/26/2010	15137/275	C3053	T1	A	Elementary Teacher	1.00	45,000.00	1.00	46,608.96	5	T03/05	Kamaile
7/26/2010	15137/275	C3064	T1	A	Elementary Teacher	1.00	45,000.00	1.00	43,157.04	5	T02/05	Kamaile
7/26/2010	15137/275	C3096	T1	A	Elementary Teacher	1.00	45,000.00	1.00	46,608.96	5	T03/05	Kamaile
7/26/2010	15137/275	C3078	T1	A	Elementary Teacher	1.00	45,000.00	1.00	43,157.04	5	T02/05	Kamaile
7/26/2010	15137/275	C3098	T1	A	Elementary Teacher	1.00	45,000.00	1.00	46,608.96	5	T03/05	Kamaile
7/26/2010	15953/275	C3080	T1	B	Elementary Teacher (Article VI)	1.00	0.00	1.00	43,157.04	5	T02/05	Kamaile
7/26/2010	17131/275	C3085	T1	B	Special Education Teacher (SPED)	1.00	0.00	1.00	32,712.96	5	T02/01	Kamaile
7/26/2010	18902/275	C3051	T1	B	Elementary Teacher (Title I)	1.00	45,000.00	1.00	46,608.96	5	T03/05	Kamaile
7/26/2010	17131/275	47120	T1	B	Educational Assistant III	1.00	0.00	1.00	31,769.04	3	SR12F	Kamaile
None	N/A	N/A	N/A	N/A	N/A	N/A	N/A	N/A	N/A	N/A	N/A	Hawaii Technology Academy
7/31/2010	15137 / 543	00002	T1	A	Teacher	0.50	25,218.00	0.50	25,218.00	05	N/A	Education Laboratory
7/31/2010	15137 / 543	00059	T1	A	Teacher	1.00	31,952.00	1.00	31,952.00	05	N/A	Education Laboratory
7/31/2010	15137 / 543	00067	T1	A	Teacher	1.00	35,329.00	1.00	35,329.00	05	N/A	Education Laboratory
7/31/2010	15137 / 543	00068	T1	A	Student Services Coordinator	0.50	23,305.00	0.50	23,305.00	05	N/A	Education Laboratory
7/31/2010	15137 / 543	00031	T1	A	SPED Teacher	1.00	49,392.00	1.00	49,392.00	05	N/A	Education Laboratory
10/15/2010	15137/398	N/A	J1	B	Bus Monitor	0.50	7,500.00	0.50	1,620.38	3	4	Waters of Life
6/30/2010	15137/320	N/A	J1	A	Teacher - Art	0.50	22,960.00	0.50	22,960.00	N/A	N/A	Lanikai
7/29/2010	15137/320	12053	J1	A	Educational Assistant III	1.00	26,000.00	1.00	26,000.00	'03	N/A	Lanikai
2/4/2010	15137/320	12013	J1	A	SASA/Office Manager	1.00	36,050.00	1.00	36,050.00	'03	N/A	Lanikai
5/31/2010	15137/320	12040	J1	A	Educational Assistant III	1.00	25,030.08	1.00	25,030.08	'03	N/A	Lanikai
6/30/2010	15137/320	12053	J1	A	Educational Assistant III	1.00	24,000.00	1.00	24,000.00	'03	N/A	Lanikai
8/31/2010	15137/320	C4000	J1	A	Principal	1.00	107,292.00	1.00	107,292.00	'04	N/A	Lanikai
6/30/2010	15137/320	12038	J1	A	Teacher	1.00	47,084.64	1.00	47,084.64	'05	N/A	Lanikai
10/15/2010	15137/320	12035	J1	A	Business Manager	1.00	45,500.00	1.00	45,500.00	'03	N/A	Lanikai
6/30/2010	15137/566	14035	J1	A	Elementary Teacher	1.00	43,979.04	1.00	43,979.04	5	T03-4	Kona Pacific
6/30/2010	15137/566	14007	J1	A	Elementary Teacher	1.00	49,995.15	1.00	49,995.15	5	T02-10	Kona Pacific
6/30/2010	15137/566	14022	J1	A	Education Director	1.00	55,516.24	1.00	55,516.24	5	T03-6	Kona Pacific
6/30/2010	15137/566	14019	J1	A	SpEd Administrator	0.50	32,384.47	0.50	32,384.47	5	T03-5	Kona Pacific
07/15/2009	15137/540	00-ADM-50054	J1	A	Driver/Facilities	1.00	20,000.00	1.00	22,880.00	n/a	N/A	Halau Ku Mana NCPCS
07/21/2009	15137/540	00-PGM-50062	J1	A	EA	0.60	5,500.00	0.60	16,224.00	n/a	N/A	Halau Ku Mana NCPCS
07/31/2009	15137/540	00-PGM-50019	J1	A	Teacher	1.00	16,600.00	1.00	13,800.00	n/a	N/A	Halau Ku Mana NCPCS
08/01/2009	15137/540	00-PGM-50047	J1	A	Teacher	1.00	32,200.00	1.00	32,200.00	n/a	N/A	Halau Ku Mana NCPCS
08/04/2009	15137/540	00-PGM-50067	J1	A	Teacher	1.00	43,157.00	1.00	43,157.00	n/a	N/A	Halau Ku Mana NCPCS
10/02/2009	15137/540	00-PGM-50070	J1	A	Teacher	1.00	43,157.00	1.00	43,157.00	n/a	N/A	Halau Ku Mana NCPCS
12/30/2009	15137/540	00-PGM-50056	J1	A	Teacher	1.00	21,300.00	.50	16,000.00	BU5	N/A	Halau Ku Mana NCPCS
01/04/2010	15137/540	00-PGM-50045	J1	A	Teacher	1.00	42,100.00	1.00	44,817.00	BU5	N/A	Halau Ku Mana NCPCS
01/04/2010	15137/540	00-PGM-50068	J1	A	Teacher	1.00	43,157.00	1.00	43,157.00	BU5	N/A	Halau Ku Mana NCPCS
01/13/2010	15137/540	00-ADM-50059	J1	A	Driver/Facilities	1.00	11,000.00	.50	13,728.00	n/a	N/A	Halau Ku Mana NCPCS

Department of Education - Charter Schools  
Personnel Separations

Table 12

03/05/2010	15137/540	00-PGM-50071	J1	A	Teacher	1.00	46,609.00	1.00	46,609.00	BU5	N/A	Halau Ku Mana NCPCS
04/15/2010	15137/540	00-PGM-50003	J1	A	EA	0.25	7,000.00	0.25	11,727.36	n/a	N/A	Halau Ku Mana NCPCS
04/30/2010	15137/540	00-PGM-50073	J1	A	Maintenance	1.00	22,880.00	1.00	22,880.00	n/a	N/A	Halau Ku Mana NCPCS
06/17/2010	15137/540	00-PGM-50076	J1	A	Tutor	0.20	410/day	0.20	8,566.91	n/a	N/A	Halau Ku Mana NCPCS
06/25/2010	15137/540	00-PGM-50038	J1	A	Teacher	1.00	31,000.00	1.00	8,052.24	n/a	N/A	Halau Ku Mana NCPCS
06/30/2010	15137/540	00-ADM-50030	J1	A	Office Manager	1.00	29,000.00	1.00	31,200.00	n/a	N/A	Halau Ku Mana NCPCS
06/30/2010	15137/540	00-ADM-50066	J1	A	Admin Support Assistant	1.00	22,880.00	1.00	25,880.00	n/a	N/A	Halau Ku Mana NCPCS
06/30/2010	15137/540	00-ADM-00006	J1	A	Family/Com Dev (Site)	1.00	40,400.00	1.00	40,000.00	n/a	N/A	Halau Ku Mana NCPCS
06/30/2010	15137/540	00-PGM-50072	J1	A	Teacher	1.00	43,157.00	1.00	41,350.00	n/a	N/A	Halau Ku Mana NCPCS
06/30/2010	15137/540	00-PGM-00007	J1	A	Teacher	0.25	12,200.00	0.25	19,389.36	n/a	N/A	Halau Ku Mana NCPCS
06/30/2010	15137/540	00-ADM-50046	J1	A	Executive Director	1.00	57,600.00	1.00	60,000.00	n/a	N/A	Halau Ku Mana NCPCS
06/30/2010	15137/540	00-PGM-50055	J1	A	Teacher	1.00	41,000.00	1.00	47,546.00	BU5	N/A	Halau Ku Mana NCPCS
06/30/2010	15137/540	00-ADM-50007	J1	A	Financial Controller	0.50	51,000.00	0.50	52,000.00	n/a	N/A	Halau Ku Mana NCPCS
06/30/2010	15137/540	00-PGM-00017	J1	A	Tutor	1.00	32,200.00	1.00	32,000.00	n/a	N/A	Halau Ku Mana NCPCS
07/15/2010	15137/540	00-ADM-50063	J1	A	Driver/Facilities	1.00	22,880.00	1.00	22,880.00	n/a	N/A	Halau Ku Mana NCPCS
07/23/2010	15137/540	00-ADM-50057	J1	A	Program Director	1.00	30,000.00	1.00	53,000.00	n/a	N/A	Halau Ku Mana NCPCS
07/30/2010	15137/540	00-PGM-50022	J1	A	Counselor	1.00	39,200.00	1.00	41,000.00	n/a	N/A	Halau Ku Mana NCPCS
07/30/2010	15137/540	00-PGM-50042	J1	A	EA	1.00	24,000.00	1.00	20,760.00	n/a	N/A	Halau Ku Mana NCPCS
07/30/2010	15137/540	00-ADM-50065	J1	A	Office Manager	1.00	32,000.00	0.63	16,250.00	n/a	N/A	Halau Ku Mana NCPCS
08/26/2010	17131/540	00-PGM-50037	J1	A	Teacher (SPED)	1.00	49,448.00	1.00	49,448.00	BU5	N/A	Halau Ku Mana NCPCS
None	N/A	N/A	N/A	N/A	N/A	N/A	N/A	N/A	N/A	N/A	N/A	Hawaii Academy of Arts & Sciences
7/1/2010	15137/565	N/A	J1	A	Educational Assistant	1.00	20,508.00	1.00	20,508.00	N/A	SR08	Kawaikini
11/12/2010	15137/560	N/A	J1	A	Custodian	0.50	16,614.00	0.50	6,087.06	1	BC02	Volcano
11/30/2010	15137/560	N/A	J1	A	Business Manager	0.50	10,798.80	0.50	10,550.50	N/A	N/A	Volcano
10/1/2010	15137/560	N/A	J1	A	Classroom Aide	0.75	15,427.28	0.75	4,007.96	N/A	N/A	Volcano



Department of Education - Charter Schools  
New Hires

Table 13

New Hire Effective Date	Prog ID/Org	Position Number	Perm/Temp	MOF	Position Title	Budgeted	Budgeted	Actual FTE	Actual Salary	BU Code	SR Level	Charter School Name
						FTE	Salary					
8/2/2010	18057 & 18053/734	N/A	J1	N	Federal Programs Liasion	1.00	42,000.00	1.00	42,000.00	N/A	N/A	Charter School Administrative Office
11/15/2010	25497/734	N/A	J1	A	Homeless Liasion	0.425	22.43/hour	0.425	22.43/hour	N/A	N/A	Charter School Administrative Office
9/10/2010	15137/734	N/A	J1	N	ARRA Data Coordinator	1.00	47,250.00	1.00	47,250.00	N/A	N/A	Charter School Administrative Office
8/4/2010	15137/546	60119	J1	A/V/don	Secondary Teacher/ Advisor	1.00	43,157.00	1.00	32,712.96	5	T02-01	Hakipu'u
10/11/2010	KS grant/546	60120	J1	don	Math Advisor	1.00	48,474.00	1.00	34,272.01	5	T04-05	Hakipu'u
4/26/2010	15137/546	60118	J1	A	Admin Ass't	0.50	16,640.00	0.40	6,508.80	3	N/A	Hakipu'u
8/1/2010	15137/564	N/A	J1	A	Teacher	1.00	47,000.00	1.00	47,000.00	5	N/A	Kanuikapono
8/1/2010	15137/564	N/A	J1	A	Teacher	1.00	48,000.00	1.00	48,000.00	5	N/A	Kanuikapono
8/1/2010	15137/564	N/A	J1	A	EA	0.50	24,000.00	0.50	24,000.00	N/A	N/A	Kanuikapono
7/20/2009	17131/554	C6056	J1	A	HS SPED	1.00	44,817.00	1.00	43,975.00	5	na	Kihei
7/20/2009	17131/554	C6055	J1	A	K8 SPED	1.00	43,153.00	1.00	40,200.00	5	na	Kihei
7/20/2009	15137/554	90059	J1	A	HS TEACHER	1.00	50,408.00	1.00	46,959.00	5	na	Kihei
7/20/2009	17131/554	C6058	J1	A	MS SPED	1.00	48,939.00	1.00	45,591.00	5	na	Kihei
7/20/2009	17131 & 15137/554	57621	T1	A	ED ASSISTANT	1.00	34,705.00	1.00	32,279.00	5	na	Kihei
7/20/2009	15137/554	90056	J1	A	MS TEACHER	1.00	47,058.00	1.00	43,838.00	5	na	Kihei
7/20/2009	15137/554	90057	J1	A	MS TEACHER	1.00	48,939.00	1.00	45,591.00	5	na	Kihei
7/20/2009	15137/554	90058	J1	A	HS TEACHER	1.00	51,920.00	1.00	48,368.00	5	na	Kihei
7/20/2009	15137/554	90060	J1	A	MS TEACHER	1.00	47,058.00	1.00	43,838.00	5	na	Kihei
7/20/2009	15137/554	90061	J1	A	MS TEACHER	1.00	47,058.00	1.00	43,838.00	5	na	Kihei
7/19/2010	17131 & 15137/554	56522	T1	A	MS ASSISTANT	1.00	34,705.00	1.00	13,008.00	3	na	Kihei
7/19/2010	15137/554	90062	J1	A	HS SPANISH	0.25	12,002.00	0.25	4,175.00	5	na	Kihei
7/19/2010	15137/554	90076	J1	A	HS TEACHER	1.00	48,008.00	1.00	16,698.00	5	na	Kihei
7/19/2010	15137/554	90067	J1	A	HS TEACHER	1.00	17,665.00	1.00	13,248.00	5	na	Kihei
7/19/2010	15137/554	90071	J1	A	HS ASSISTANT	1.00	26,030.00	1.00	9,054.00	3	na	Kihei
7/19/2010	15137/554	90070	J1	A	HS TEACHER	1.00	48,008.00	1.00	16,698.00	5	na	Kihei
7/19/2010	15137/554	90072	J1	A	HS ED ASSISTANT	1.00	34,705.00	1.00	12,071.00	3	na	Kihei
7/19/2010	15137/554	90068	J1	A	MS ED ASSISTANT	1.00	34,705.00	1.00	12,071.00	3	na	Kihei
7/19/2010	15137/554	90073	J1	A	HS TEACHER	1.00	46,609.00	1.00	16,212.00	5	na	Kihei
7/19/2010	17131/554	C6055	J1	A	K8 SPED	1.00	48,008.00	1.00	13,612.00	5	na	Kihei
7/19/2010	15137/554	90069	J1	A	HS ED ASSISTANT	1.00	37,485.00	1.00	13,038.00	3	na	Kihei
11/1/2010	15137/554	90083	J1	A	HS TEACHER	0.50	16,203.00	0.50	2,963.00	5	na	Kihei
7/19/2010	15137/554	90077	J1	A	HS ED ASSISTANT	1.00	34,705.00	1.00	14,974.00	3	na	Kihei
7/28/2009	15137/149	C1006	J1	A	TEACHER	1.00	50,208.00	1.00	50,208.00	05	W0206	Waialae
7/28/2009	15137/149	C1038	J1	A	TEACHER	1.00	50,208.00	1.00	50,208.00	05	W0206	Waialae
7/26/2010	15137/149	C1005	J1	A	Teacher	1.00	40,104.00	1.00	40,104.00	05	W0101	Waialae
7/26/2010	15137/149	C1003	J1	A	Teacher	1.00	50,208.00	1.00	50,208.00	05	W0206	Waialae
7/26/2010	15137/149	C1038	J1	A	Teacher	1.00	47,328.00	1.00	47,328.00	05	W0204	Waialae
7/26/2010	15137/149	C1035	J1	A	Teacher	1.00	55,208.00	1.00	55,208.00	05	W0206+National Board Certification	Waialae
7/27/2010	15137/545	C3112	T1	A	Elem Teacher	1.00	51,426.00	1.00	51,426.00	05	T0407	Ka Waihona
7/27/2010	15137/545	C3036	T1	A	Elem Teacher	1.00	54,528.00	1.00	54,528.00	05	T0407	Ka Waihona
7/27/2010	15137/545	C3031	T1	A	Elem Teacher	1.00	33,976.08	1.00	33,976.08	05	K0201	Ka Waihona
7/24/2009	15137/545	C3102	T1	A	Elem Teacher	1.00	64,077.12	1.00	64,077.12	05	K0709	Ka Waihona
7/27/2010	15137/545	C8008	T1	A	Elem Teacher	1.00	33,976.08	1.00	33,976.08	05	K0201	Ka Waihona
7/1/2009	15137/545	C3001	T1	A	Sped Teacher	1.00	50,510.16	1.00	50,510.16	05	K0307	Ka Waihona
7/29/2009	15137/545	801293	T1	B	Educational Assistant	1.00	24,147.72	1.00	24,147.72	03	SR10A	Ka Waihona
7/27/2010	15137/545	C3016	T1	A	Elem Teacher	1.00	46,974.00	1.00	46,974.00	05	K0207	Ka Waihona
8/3/2010	15137/545	801006	T1	B	Educational Assistant	1.00	26,131.44	1.00	26,131.44	03	SR12A	Ka Waihona
8/16/2010	15137/545	801007	T1	B	Educational Assistant	1.00	26,131.44	1.00	26,131.44	03	SR12A	Ka Waihona
8/27/2010	15137/562	N/A	J1	A	Hope Po'okumu	1.00	80,000.00	1.00	3,333.33	6	SR27K	Ka 'Umeke Ka'eo
10/14/2010	15137/562	N/A	T1	A	SFS Clerk	1.00	28,000.00	1.00	1,166.67	3	SR7-G	Ka 'Umeke Ka'eo
10/28/2010	15137/562	N/A	J1	A	Registrar	1.00	30,000.00	1.00	1,229.17	3	SR7-G	Ka 'Umeke Ka'eo
8/3/2010	15137/466	10	T1	A	Science Teacher	460 hrs	12,190.00	460 hrs	12,190.00	N/A	N/A	KANAKA
9/7/2010	15137/466	11	T1	A	Culture Teacher	85 days	8,500.00	85 days	8,500.00	N/A	N/A	KANAKA
11/1/2010	15137/549	C5076	T1	A	Secondary Teacher	1.00	50,000.00	1.00	32,712.96	5	T0201	Ke Ana La'ahana
11/1/2010	17131/549	C5122	T1	N	SPED Teacher	1.00	0.00	1.00	48,008.16	5	T0306	Ke Ana La'ahana
7/27/2010	15137/411	C411101	T1	A	Elementary Teacher	1.00	51,000.00	1.00	47,602.32	5	T02-05	Kualapu'u
7/27/2010	15137/411	C411105	T1	A	Elementary Teacher	1.00	51,000.00	1.00	47,602.32	5	T02-05	Kualapu'u

Department of Education - Charter Schools  
New Hires

Table 13

7/27/2010	15137/411	C411104	T1	A	Elementary Teacher	1.00	51,000.00	1.00	43,157.00	5	T02-05	Kualapu'u
7/27/2010	15137/411	C411103	T1	A	Elementary Teacher	1.00	51,000.00	1.00	43,157.04	5	T02-05	Kualapu'u
7/27/2010	15137/411	C411102	T1	A	Elementary Teacher	1.00	51,000.00	1.00	43,157.00	5	T02-05	Kualapu'u
7/27/2010	15137/411	C6022	T1	A	Elementary Teacher	1.00	51,000.00	1.00	54,541.32	5	T03-07	Kualapu'u
9/3/2010	15137/411	411106	T1	A	Vice Principal	1.00	75,000.00	1.00	58,482.00	6	E01-1	Kualapu'u
7/27/2010	15137/411	29499	T1	A	Health Aide	1.00	20,000.00	1.00	18,873.00	3	SR09A	Kualapu'u
7/27/2010	15137/411	56294	T1	A	Educational Assistant	1.00	25,000.00	1.00	29,368.00	3	SR12D	Kualapu'u
7/27/2010	15137/411	56291	T1	A	Educational Assistant	0.75	25,000.00	0.75	23,827.00	3	SR12F	Kualapu'u
7/16/2009	15137/397	N/A	J1	A	Secondary Teacher	1.00	45,000.00	1.00	44,452.00	5	T0206	Kanu O Ka Aina
7/16/2009	15137/397	N/A	J1	A	Secondary Teacher	1.00	45,000.00	1.00	32,713.00	5	T0201	Kanu O Ka Aina
7/16/2009	15137/397	N/A	J1	A	Secondary Teacher	1.00	45,000.00	1.00	44,452.00	5	T0206	Kanu O Ka Aina
7/24/2009	15137/397	N/A	J1	A	Secondary Teacher	1.00	45,000.00	1.00	44,452.00	5	T0205	Kanu O Ka Aina
8/7/2009	15137/397	N/A	J1	A	Educational Assistant	1.00	25,000.00	1.00	23,118.00	3	SR10A	Kanu O Ka Aina
10/16/2009	15137/397	N/A	J1	A	Secondary Teacher	1.00	45,000.00	1.00	57,243.00	5	T0706	Kanu O Ka Aina
7/16/2010	15137/397	N/A	J1	A	Counselor	1.00	45,000.00	1.00	43,667.00	5	T0302	Kanu O Ka Aina
7/26/2010	15137/397	N/A	J1	A	Elementary Teacher	1.00	45,000.00	1.00	43,157.00	5	T0205	Kanu O Ka Aina
7/26/2010	15137/397	N/A	J1	A	Secondary Teacher	1.00	45,000.00	1.00	48,008.00	5	T0306	Kanu O Ka Aina
7/26/2010	15137/397	N/A	J1	A	Secondary Teacher	1.00	45,000.00	1.00	32,713.00	5	T0201	Kanu O Ka Aina
7/26/2010	15137/547	N/A	T1	A	Education Assistant III	1.00	28,000.00	0.75	19,017.90	3	6	Kamakau
7/26/2010	15137/547	N/A	T1	A	Education Assistant I	1.00	22,000.00	1.00	25,357.20	3	6	Kamakau
7/28/2010	15137/394	WM5213	T1	A	Spec Ed Teacher	1.0	32,712.96	1.00	32,712.96	5.0	T0201	Waimea Middle
7/28/2010	15137/394	C5217	T1	N	Spec Ed Teacher	1.0	32,712.96	1.00	32,712.96	5.0	T0201	Waimea Middle
7/28/2010	15137/394	C5220	T1	N	Spec Ed Teacher	1.0	32,712.96	1.00	32,712.96	5.0	T0201	Waimea Middle
8/16/2010	15137/394	WM59538	T1	A	School Custodian II	1.0	33,228.00	1.00	33,228.00	3.0	BC02A	Waimea Middle
2/16/2010	15137/396	Ceridian 20142	T1	A	SCHOOL SECURITY	1.00	23,468.00	1.00	23,468.00	03	SR5F	Connections
7/29/2010	15137/396	Ceridian 20137	T1	A	TEACHER	1.00	46,609.00	1.00	46,609.00	05	T0305	Connections
7/29/2010	15137/396	Ceridian 20153	T1	A	TEACHER	1.00	58,959.00	1.00	58,959.00	05	T0707	Connections
11/1/2010	15137/396	Ceridian 20162	T1	A	TEACHER	1.00	50,931.00	1.00	50,931.00	05	T0308	Connections
7/27/2010	15137/544	30072	J1	A/V	Elementary Teacher	1.00	46,609.00	1.00	46,609.00	5	Class III 103-5	Myron B. Thompson
7/27/2010	15137/544	30070	J1	A/V	Secondary Teacher	1.00	46,609.00	1.00	46,609.00	5	T03-5	Myron B. Thompson
10/1/2010	15137/544	30077	J1	A	Secondary Teacher	1.00	35,329.00	1.00	35,329.00	5	T03-2	Myron B. Thompson
9/1/2010	15137/544	30075	J1	A/V	Elementary Teacher	1.00	43,157.00	1.00	43,157.00	5	T02-5	Myron B. Thompson
7/27/2010	15137/544	30069	T1	A	Spanish Teacher	0.50	25,000.00	0.50	30,000.00	5	N/A	Myron B. Thompson
7/27/2010	15137/544	30068	T1	A	French Teacher	0.50	25,000.00	0.50	30,000.00	5	N/A	Myron B. Thompson
7/27/2010	15137/544	30055	J1	A/V	Secondary Teacher	1.00	46,609.00	1.00	46,609.00	5	T03-5	Myron B. Thompson
7/27/2010	15137/544	C1098	J1	A/V	Secondary Teacher	1.00	60,729.00	1.00	60,729.00	5	T07-8	Myron B. Thompson
7/27/2010	15137/544	C8017	J1	A/V	Secondary Teacher	1.00	43,157.00	1.00	43,157.00	5	T02-5	Myron B. Thompson
7/27/2009	15137/544	C1146	J1	A/V	Secondary Teacher	1.00	35,328.00	1.00	35,328.00	5	T03-1	Myron B. Thompson
7/27/2009	15137/544	C1152	J1	A/V	Secondary Teacher	1.00	46,608.00	1.00	46,608.00	5	T03-5	Myron B. Thompson
7/27/2009	15137/544	C1099	J1	A/V	Elementary Teacher	1.00	60,732.00	1.00	60,732.00	5	T07-8	Myron B. Thompson
7/27/2009	15137/544	C1149	T1	A	French Teacher	0.50	16,356.00	0.50	16,356.00	5	T02-1	Myron B. Thompson
7/27/2009	15137/544	C1106	J1	A/V	Secondary Teacher	1.00	49,452.00	1.00	49,452.00	5	T03-7	Myron B. Thompson
7/27/2009	15137/544	C1100	J1	A/V	Elementary Teacher	1.00	45,780.00	1.00	45,780.00	5	T02-7	Myron B. Thompson
7/27/2009	15137/544	C1110	J1	A/V	Secondary Teacher	1.00	60,732.00	1.00	60,732.00	5	T07-8	Myron B. Thompson
12/1/2009	15137/544	30053	J1	A	Accounting Clerk IV	1.00	53,760.00	1.00	53,760.00	3	N/A	Myron B. Thompson
12/1/2009	15137/544	30054	J1	A	Accounting Clerk IV	1.00	53,760.00	1.00	53,760.00	3	N/A	Myron B. Thompson
7/28/2009	15137/548	C5069	J1	A	Drama Teacher	1.00	46,608.00	1.00	46,608.00	5	T0305	Innovations
7/26/2009	15137/548	C5067	J1	A	Elementary Teacher 3/4	1.00	43,157.04	1.00	43,157.04	5	T0205	Innovations
7/26/2009	15137/548	C5068	J1	A	Elementary Teacher 5/6	1.00	46,608.00	1.00	46,608.00	5	T0305	Innovations
7/26/2009	15137/548	C5254	J1	A	Elem - Sec Teacher	1.00	46,608.00	1.00	46,608.00	5	T0305	Innovations
11/2/2009	15137/548	00801389	J1	A	Educational Assistant	0.50	18,000.00	0.50	18,000.00	3	SR08/A	Innovations
2/22/2010	15137/548	N/A	J1	A	Educational Assistant	1.00	24,147.84	1.00	24,147.84	3	SR10/A	Innovations
1/19/2010	15137/563	N/A	J1	A	Office Assistant I	0.50	11,000.00	0.50	10,974.00	3	SR04 A	Nawahi
4/1/2010	15137/563	N/A	T1	A	Building Maintenance Worker	0.25	19,500.00	0.50	19,494.00	N/A	N/A	Nawahi
8/3/2009	15137/541	VOY003	T1	A	Elem Teacher	1.00	53,090.40	1.00	53,090.40	5	N/A	Voyager
7/27/2010	15137/541	VOY002	T1	A	Business Manager	0.75	35,800.00	0.75	35,800.00	13	N/A	Voyager
11/15/2010	15137/541	VOY004	T1	A	SPED TEACHER	1.00	58,013.04	1.00	58,013.04	5	N/A	Voyager
7/26/2010	15137/541	VOY005	T1	A	Elem Teacher	0.50	16,603.92	0.50	16,603.92	5	N/A	Voyager
8/23/2010	15137/541	VOY006	T1	A	Elem Teacher	0.75	26,114.64	0.75	26,114.64	5	N/A	Voyager
8/3/2010	15137/541	VOY007	T1	A	Elem Teacher	1.00	46,336.08	1.00	46,336.08	5	N/A	Voyager
1/11/2010	15137/541	VOY008	T1	A	Mandarin Chinese Teacher	0.50	16,356.48	0.50	16,356.48	5	N/A	Voyager

Department of Education - Charter Schools  
New Hires

Table 13

7/26/2010	15137/541	VOY009	T1	A	Elem Teacher	1.00	59,719.20	1.00	59,719.20	5	N/A	Voyager
7/26/2010	15137/541	VOY010	T1	A	Elem Teacher	1.00	56,324.16	1.00	56,324.16	5	N/A	Voyager
7/26/2010	15137/399	C5288	J1	A	Secondary Teacher	1.00	32,713.00	1.00	32,713.00	05	T02-01	West Hawaii Explorations Academy
2/18/2010	15137/399	C5043	J1	A	Secondary Teacher	1.00	46,609.00	1.00	46,609.00	05	T0305	West Hawaii Explorations Academy
8/16/2010	15137/557	047484	J1	A	EA	1.00	25,010.00	1.00	25,010.00	00	na	Kua O Ka La
7/28/2010	15137/557	047484	J1	A	EA	1.00	25,010.00	1.00	25,010.00	00	na	Kua O Ka La
8/16/2010	17131/557	801224	J1	N	EA	1.00	25,010.00	1.00	25,010.00	03	n/a	Kua O Ka La
7/27/2010	15137/557	C5246	J1	N	TEACHER	1.00	38,840.80	1.00	38,840.80	05	T0305	Kua O Ka La
8/23/2010	17131/542	C8000	J1	N	SPED Teacher	1.00	41,952.00	1.00	41,952.00	5	N/A	Halau Lokahi
8/20/2009	17131/542	C1078	J1	N	SPED Teacher	1.00	40,589.00	1.00	40,589.00	5	T02-07	Halau Lokahi
9/2/2010	17131/542	801229	T1	N	Sped EA	1.00	22,212.00	1.00	22,212.00	3	N/A	Halau Lokahi
10/1/2010	17131/542	C1139	J1	N	Article IV Teacher	1.00	45,288.00	1.00	45,288.00	5	T03-05	Halau Lokahi
8/20/2009	17131/542	C1139	J1	N	Article IV Teacher	1.00	32,520.00	1.00	32,520.00	5	T02-01	Halau Lokahi
8/2/2010	15730/556	556001	J1	A	Middle School Teacher	1.00	40,000.00	1.00	32,712.96	5	N/A	Ke Kula Niihau O Kekaha
7/27/2010	15137/275	C3055	T1	A	Elementary Teacher	1.00	45,000.00	1.00	48,008.16	5	T03/06	Kamaile
7/27/2010	15137/275	C8015	T1	A	Secondary Teacher	1.00	45,000.00	1.00	36,743.04	5	T05/04	Kamaile
7/27/2010	15137/275	C3075	T1	A	Elementary Teacher	1.00	45,000.00	1.00	32,712.96	5	T02/01	Kamaile
7/27/2010	18902/275	C3051	T1	B	Elementary Teacher	1.00	45,000.00	1.00	46,608.96	5	T03/05	Kamaile
7/27/2010	15953/275	C3080	T1	B	Elementary Teacher	1.00	0.00	1.00	43,157.04	5	T02/05	Kamaile
7/27/2010	15137/275	C3078	T1	A	Elementary Teacher	1.00	45,000.00	1.00	51,426.00	5	T04/07	Kamaile
9/13/2010	15137/275	C8016	T1	A	Elementary Teacher	1.00	45,000.00	1.00	43,157.04	5	T02/05	Kamaile
7/27/2010	15953/275	C3109	T1	B	Elementary Teacher	1.00	0.00	1.00	48,008.16	5	T03/06	Kamaile
7/27/2010	15137/275	C8013	T1	A	Secondary Teacher	1.00	45,000.00	1.00	46,608.96	5	T03/05	Kamaile
7/27/2010	15137/275	C3098	T1	A	Elementary Teacher	1.00	45,000.00	1.00	43,157.04	5	T02/05	Kamaile
7/27/2010	17131/275	C3089	T1	B	Special Education Teacher	1.00	0.00	1.00	32,712.96	5	T02/01	Kamaile
7/27/2010	15137/275	C8003	T1	A	Secondary Teacher	1.00	45,000.00	1.00	32,712.96	5	T02/01	Kamaile
7/27/2010	15137/275	C3064	T1	A	Elementary Teacher	1.00	45,000.00	1.00	43,157.04	5	T02/05	Kamaile
7/27/2010	15137/275	C3074	T1	A	Secondary Teacher	1.00	45,000.00	1.00	43,157.04	5	T02/05	Kamaile
7/27/2010	15953/275	C3081	T1	B	Elementary Teacher	1.00	0.00	1.00	43,157.04	5	T02/05	Kamaile
7/27/2010	17131/275	C3091	T1	B	Special Education Teacher	1.00	0.00	1.00	43,157.04	5	T02/05	Kamaile
7/27/2010	15137/275	C8014	T1	A	Secondary Teacher	1.00	45,000.00	1.00	46,608.96	5	T05/03	Kamaile
10/11/2010	15137/275	C8024	T1	A	Elementary Teacher	1.00	45,000.00	1.00	46,608.96	5	T05/03	Kamaile
7/27/2010	15137/275	C3096	T1	A	Elementary Teacher	1.00	45,000.00	1.00	43,157.04	5	T02/05	Kamaile
7/27/2010	15137/275	C3056	T1	A	Elementary Teacher	1.00	45,000.00	1.00	48,008.16	5	T03/06	Kamaile
7/1/2010	15137/551	21006	J1	A	Registrar	1.00	38,981.04	1.00	38,981.04	05	T04-03	Hawaii Technology Academy
7/27/2010	15137/551	50000	J1	A	Teacher	1.00	43,157.04	1.00	43,157.04	05	T02-05	Hawaii Technology Academy
7/27/2010	15137/551	50000	J1	A	Teacher	1.00	43,157.04	1.00	43,157.04	05	T02-05	Hawaii Technology Academy
7/27/2010	15137/551	52260	J1	A	Counselor	1.00	46,608.96	1.00	46,608.96	05	T03-05	Hawaii Technology Academy
7/27/2010	15137/551	50520	J1	A	Teacher	1.00	47,159.04	1.00	47,159.04	05	T02-08	Hawaii Technology Academy
7/27/2010	15137/551	50000	J1	A	Teacher	1.00	51,426.00	1.00	51,426.00	05	T04-07	Hawaii Technology Academy
7/27/2010	15137/551	50000	J1	A	Teacher	1.00	45,785.04	1.00	45,785.04	05	T02-07	Hawaii Technology Academy
8/9/2010	15137/551	50522	J1	A	Teacher	1.00	60,729.12	1.00	60,729.12	05	T07-08	Hawaii Technology Academy
7/1/2010	15137/551	51165	J1	A	Principal	1.00	101,490.96	1.00	101,490.96	06	E07-10	Hawaii Technology Academy
7/1/2010	15137/551	51001	J1	A	Vice Principal	1.00	75,795.12	1.00	75,795.12	06	E03-01	Hawaii Technology Academy
7/8/2010	15137/551	SR20	J1	A	Computer Tech. Specialist	1.00	42,132.00	1.00	42,132.00	13	SR20	Hawaii Technology Academy
9/24/2010	15137/551	50522	J1	A	Teacher	1.00	49,447.92	1.00	49,447.92	05	T03-07	Hawaii Technology Academy
8/1/2010	15137 / 543	00128	T1	A	Teacher	1.00	46,609.00	1.00	46,609.00	05	N/A	Education Laboratory
8/1/2010	15137 / 543	00129	T1	A	Teacher	1.00	46,609.00	1.00	46,609.00	05	N/A	Education Laboratory
8/10/2010	15137 / 543	00130	T1	A	Information Tech Spec I	1.00	36,024.00	1.00	36,024.00	13	SR11	Education Laboratory
7/5/2010	15137/398	N/A	J1	A	Security/Maintenance	1.00	26,686.40	1.00	11,618.11	3	9	Waters of Life
7/31/2010	151397/398	N/A	J1	A	Security/Maintenance	1.00	31,200.00	1.00	10,620.00	3	13	Waters of Life
7/26/2010	ARRA/398	N/A	J1	V	Teacher	1.00	50,337.72	1.00	18,858.15	5	3	Waters of Life
7/26/2010	ARRA/398	N/A	J1	V	Teacher	1.00	46,609.00	1.00	17,287.46	5	3	Waters of Life
7/26/2010	ARRA/398	N/A	J1	V	Teacher	1.00	35,329.00	1.00	13,397.26	5	3	Waters of Life
7/26/2010	ARRA/398	N/A	J1	V	Teacher	1.00	44,452.00	1.00	9,988.06	5	2	Waters of Life
7/26/2010	15953/398	N/A	J1	B	Teacher	1.00	46,609.00	1.00	17,207.37	5	3	Waters of Life
7/22/2010	ARRA/398	N/A	J1	V	Executive Assistant	1.00	41,600.00	1.00	15,817.48	3	20	Waters of Life
7/12/2010	15137/398	N/A	J1	A	Office Manager	0.75	24,065.00	0.75	7,946.26	3	6	Waters of Life
7/1/2010	15137/398	N/A	J1	A	Director/Principal	1.00	73,000.00	1.00	30,851.22	13	31	Waters of Life
10/11/2010	15137/398	N/A	J1	A	Office Clerk	1.00	2,560.00	1.00	1,962.12	3	4	Waters of Life
8/2/2010	15137/398	N/A	J1	B	Bus Monitor	0.50	7,500.00	0.50	1,620.38	3	4	Waters of Life

Department of Education - Charter Schools  
New Hires

Table 13

8/2/2010	15137/398	N/A	J1	A	Bus Driver	0.50	16,500.00	0.50	3,713.10	3	4	Waters of Life
7/26/2010	ARRA/398	N/A	J1	B	Education Resource Manager	1.00	49,448.00	1.00	18,542.97	3	24	Waters of Life
7/26/2010	17131/398	N/A	J1	B	EA III	1.00	30,036.00	1.00	6,416.80	3	12	Waters of Life
7/26/2010	ARRA/398	N/A	J1	B	Education Asst.	1.00	24,631.20	1.00	9,734.77	3	6	Waters of Life
7/27/2010	15137/320	C4028	J1	A	Elem Teacher	1.00	43,157.04	1.00	43,157.04	05	N/A	Lanikai
8/16/2010	15137/320	C4016	J1	A	Elem Teacher	1.00	46,608.96	1.00	46,608.96	05	N/A	Lanikai
10/1/2010	15137/320	12057	J1	A	Business Manager	1.00	46,000.00	1.00	46,000.00	03	N/A	Lanikai
7/1/2010	15137/566	N/A	J1	A	Elementary Teacher	1.00	46,915.00	1.00	46,915.00	5	T02-5	Kona Pacific
7/1/2010	15137/566	N/A	J1	A	Elementary Teacher	1.00	48,031.00	1.00	48,031.00	5	T03-3	Kona Pacific
7/1/2010	15137/566	N/A	J1	A	Elementary Teacher	1.00	57,531.00	1.00	57,531.00	5	T03-6	Kona Pacific
8/1/2010	15137/566	N/A	J1	A	Education Director	1.00	60,000.00	1.00	60,000.00	5	T03-6	Kona Pacific
8/1/2010	15137/566	N/A	J1	A	SpEd Director	0.50	35,000.00	0.50	35,000.00	5	T03-5	Kona Pacific
09/08/2009	15137/540	00-ADM-50069	J1	A	Maintenance	1.00	22,880.00	1.00	8,253.96	n/a	N/A	Halau Ku Mana NCPCS
01/29/2010	15137/540	00-PGM-50074	J1	N	Education Resource Manager	1.00	34,000.00	1.00	40,000.00	n/a	N/A	Halau Ku Mana NCPCS
03/30/2010	15137/540	00-PGM-50077	J1	A	Teacher	1.00	48,000.00	1.00	46,609.00	BU05	N/A	Halau Ku Mana NCPCS
06/21/2010	15137/540	00-ADM-50079	J1	A	Executive Director	1.00	65,000.00	1.00	65,000.00	n/a	N/A	Halau Ku Mana NCPCS
06/21/2010	15137/540	00-ADM-50078	J1	A	Principal	1.00	55,000.00	1.00	50,000.00	n/a	N/A	Halau Ku Mana NCPCS
07/26/2010	15137/540	00-PGM-50081	J1	A	Teacher	1.00	43,157.00	1.00	43,157.00	BU05	N/A	Halau Ku Mana NCPCS
07/26/2010	15137/540	00-PGM-50083	J1	A	Teacher	1.00	47,000.00	1.00	46,609.00	BU05	N/A	Halau Ku Mana NCPCS
08/13/2010	15137/540	00-AMD-50084	J1	A	Office Manager	1.00	33,000.00	1.00	33,000.00	n/a	N/A	Halau Ku Mana NCPCS
08/13/2010	15137/540	00-ADM-50080	J1	A	Counselor	1.00	38,000.00	1.00	38,000.00	n/a	N/A	Halau Ku Mana NCPCS
08/13/2010	15137/540	00-PGM-50082	J1	A	Teacher	1.00	46,609.00	1.00	46,609.00	BU05	N/A	Halau Ku Mana NCPCS
09/14/2010	15137/540	00-PGM-50085	T1	A	Tutor	0.125	20.00/hour	0.125	20.00/hour	n/a	N/A	Halau Ku Mana NCPCS
09/14/2010	15137/540	00-PGM-50086	J1	A	Tutor	1.00	34,705.00	1.00	34,705.00	n/a	N/A	Halau Ku Mana NCPCS
10/16/2010	15137/540	ADM-00-50087	J1	A	Maintenance/Driver	1.00	32,000.00	1.00	32,000.00	n/a	N/A	Halau Ku Mana NCPCS
7/27/2010	15137/561	C5115	T	A	Elem Teacher	1.00	58,159.00	1.00	58,159.00	5	T07-07	Hawaii Academy of Arts & Sciences
7/27/2010	15137/561	C5285	T	A	Sec Teacher	1.00	46,609.00	1.00	46,609.00	5	T03-05	Hawaii Academy of Arts & Sciences
7/27/2010	15137/561	C5153	T	A	Elem Teacher	1.00	32,713.00	1.00	32,713.00	5	T02-01	Hawaii Academy of Arts & Sciences
7/23/2010	15137/565	N/A	J1	A	Educational Assistant	1.00	20,508.00	1.00	20,508.00	N/A	SR08	Kawaikini
7/23/2010	15137/565	N/A	J1	A	Secondary Teacher	1.00	32,713.00	1.00	32,713.00	5	N/A	Kawaikini
7/23/2010	15137/565	N/A	J1	A	Elementary Teacher	1.00	32,713.00	1.00	31,713.00	5	N/A	Kawaikini
7/23/2010	15137/565	N/A	J1	A	Educational Asst. SPED	1.00	20,508.00	1.00	20,508.00	N/A	SR08	Kawaikini
7/23/2010	15137/565	N/A	J1	A	Secondary Teacher	1.00	46,609.00	1.00	46,609.00	5	N/A	Kawaikini
10/1/2010	15137/560	N/A	J1	A	Business Manager	0.75	22,477.64	0.75	3,496.04	N/A	N/A	Volcano
7/1/2010	15137/560	N/A	J1	A	Teacher	1.00	29,610.60	1.00	13,215.02	5	C3-S5	Volcano
10/13/2010	15137/560	N/A	J1	A	Classroom Aide	0.75	11,980.76	0.75	2,678.52	N/A	N/A	Volcano
10/27/2010	15137/560	N/A	J1	A	Custodian	0.45	5,925.00	0.45	590.63	N/A	N/A	Volcano
8/23/2010	15137/560	N/A	J1	A	Recess Monitor	0.375	7,050.81	0.375	2,360.12	N/A	N/A	Volcano

Department of Education Charter Schools  
Reduction in Force (RIF) Actions

Table 14

<u>Prog ID/Org</u>	<u>Position #</u>	<u>Position Title</u>	<u>MOF</u>	<u>FTE</u>	<u>Current Comp Rate</u>	<u>Position Salary Decrease</u>	<u>Position Salary Increase</u>	<u>Comp Freq (Mo/Hr)</u>	<u>SR Level</u>	<u>BU</u>	<u>Perm/ Temp</u>	<u>Placement Action</u>	<u>Reason</u>	<u>Charter School Name</u>
None	N/A	N/A	N/A	N/A	N/A	N/A	N/A	N/A	N/A	N/A	N/A	N/A	N/A	CSAO
None	N/A	N/A	N/A	N/A	N/A	N/A	N/A	N/A	N/A	N/A	N/A	N/A	N/A	Hakipu'u
None	N/A	N/A	N/A	N/A	N/A	N/A	N/A	N/A	N/A	N/A	N/A	N/A	N/A	Kanuikapono
None	N/A	N/A	N/A	N/A	N/A	N/A	N/A	N/A	N/A	N/A	N/A	N/A	N/A	Kihei
None	N/A	N/A	N/A	N/A	N/A	N/A	N/A	N/A	N/A	N/A	N/A	N/A	N/A	Waialae
None	N/A	N/A	N/A	N/A	N/A	N/A	N/A	N/A	N/A	N/A	N/A	N/A	N/A	Ka Waihona
None	N/A	N/A	N/A	N/A	N/A	N/A	N/A	N/A	N/A	N/A	N/A	N/A	N/A	Ka 'Umeke Ka'eo
None	N/A	N/A	N/A	N/A	N/A	N/A	N/A	N/A	N/A	N/A	N/A	N/A	N/A	KANAKA
None	N/A	N/A	N/A	N/A	N/A	N/A	N/A	N/A	N/A	N/A	N/A	N/A	N/A	Ke Ana La'ahana
None	N/A	N/A	N/A	N/A	N/A	N/A	N/A	N/A	N/A	N/A	N/A	N/A	N/A	Kualapu'u
None	N/A	N/A	N/A	N/A	N/A	N/A	N/A	N/A	N/A	N/A	N/A	N/A	N/A	Kanu O Ka Aina
None	N/A	N/A	N/A	N/A	N/A	N/A	N/A	N/A	N/A	N/A	N/A	N/A	N/A	Kamakau
None	N/A	N/A	N/A	N/A	N/A	N/A	N/A	N/A	N/A	N/A	N/A	N/A	N/A	Waimea Middle
15137/396	Ceridian 20005	School Security	A	1.00	NA	NA	NA	semi MO	SR5F	03	Temp	Layed off	decrease in funding	Connections
15137/396	Ceridian 20022	Sasa	A	1.00	NA	NA	NA	semi MO	SR12C	03	Temp	Layed off	decrease in funding	Connections
None	N/A	N/A	N/A	N/A	N/A	N/A	N/A	N/A	N/A	N/A	N/A	N/A	N/A	Myron B. Thompson
None	N/A	N/A	N/A	N/A	N/A	N/A	N/A	N/A	N/A	N/A	N/A	N/A	N/A	Innovations
None	N/A	N/A	N/A	N/A	N/A	N/A	N/A	N/A	N/A	N/A	N/A	N/A	N/A	Nawahi
None	N/A	N/A	N/A	N/A	N/A	N/A	N/A	N/A	N/A	N/A	N/A	N/A	N/A	Voyager
None	N/A	N/A	N/A	N/A	N/A	N/A	N/A	N/A	N/A	N/A	N/A	N/A	N/A	West Hawaii Explorations Academy
None	N/A	N/A	N/A	N/A	N/A	N/A	N/A	N/A	N/A	N/A	N/A	N/A	N/A	Kua O Ka La
None	N/A	N/A	N/A	N/A	N/A	N/A	N/A	N/A	N/A	N/A	N/A	N/A	N/A	Halau Lokahi
None	N/A	N/A	N/A	N/A	N/A	N/A	N/A	N/A	N/A	N/A	N/A	N/A	N/A	Ke Kula Niihau O Kekaha
None	N/A	N/A	N/A	N/A	N/A	N/A	N/A	N/A	N/A	N/A	N/A	N/A	N/A	Kamaile
None	N/A	N/A	N/A	N/A	N/A	N/A	N/A	N/A	N/A	N/A	N/A	N/A	N/A	Hawaii Tech Academy
None	N/A	N/A	N/A	N/A	N/A	N/A	N/A	N/A	N/A	N/A	N/A	N/A	N/A	Education Laboratory
None	N/A	N/A	N/A	N/A	N/A	N/A	N/A	N/A	N/A	N/A	N/A	N/A	N/A	Waters of Life
None	N/A	N/A	N/A	N/A	N/A	N/A	N/A	N/A	N/A	N/A	N/A	N/A	N/A	Lanikai
None	N/A	N/A	N/A	N/A	N/A	N/A	N/A	N/A	N/A	N/A	N/A	N/A	N/A	Kona Pacific
None	N/A	N/A	N/A	N/A	N/A	N/A	N/A	N/A	N/A	N/A	N/A	N/A	N/A	Hawaii Academy of Arts & Sciences
None	N/A	N/A	N/A	N/A	N/A	N/A	N/A	N/A	N/A	N/A	N/A	N/A	N/A	Kawaikini
None	N/A	N/A	N/A	N/A	N/A	N/A	N/A	N/A	N/A	N/A	N/A	N/A	N/A	Volcano

Department of Education - Charter Schools  
Grievances

Table 15

<u>Prog ID/Org</u>	<u>Position Number</u>	<u>Position Title</u>	<u>MOF</u>	<u>FTE</u>	<u>SR Level</u>	<u>BU</u>	<u>Perm/Temp</u>	<u>RIF Date</u>	<u>Grievance Date</u>	<u>Current Status</u>	<u>Charter School Name</u>
None	N/A	N/A	N/A	N/A	N/A	N/A	N/A	N/A	N/A	N/A	CSAO
None	N/A	N/A	N/A	N/A	N/A	N/A	N/A	N/A	N/A	N/A	Hakipu'u
None	N/A	N/A	N/A	N/A	N/A	N/A	N/A	N/A	N/A	N/A	Kanuiakapono
None	N/A	N/A	N/A	N/A	N/A	N/A	N/A	N/A	N/A	N/A	Kihei
None	N/A	N/A	N/A	N/A	N/A	N/A	N/A	N/A	N/A	N/A	Waiialae
None	N/A	N/A	N/A	N/A	N/A	N/A	N/A	N/A	N/A	N/A	Ka Waihona
None	N/A	N/A	N/A	N/A	N/A	N/A	N/A	N/A	N/A	N/A	Ka 'Umeke Ka'eo
None	N/A	N/A	N/A	N/A	N/A	N/A	N/A	N/A	N/A	N/A	KANAKA
None	N/A	N/A	N/A	N/A	N/A	N/A	N/A	N/A	N/A	N/A	Ke Ana La'ahana
None	N/A	N/A	N/A	N/A	N/A	N/A	N/A	N/A	N/A	N/A	Kualapu'u
None	N/A	N/A	N/A	N/A	N/A	N/A	N/A	N/A	N/A	N/A	Kanu O Ka Aina
None	N/A	N/A	N/A	N/A	N/A	N/A	N/A	N/A	N/A	N/A	Kamakau
None	N/A	N/A	N/A	N/A	N/A	N/A	N/A	N/A	N/A	N/A	Waimea Middle
None	N/A	N/A	N/A	N/A	N/A	N/A	N/A	N/A	N/A	N/A	Connections
None	N/A	N/A	N/A	N/A	N/A	N/A	N/A	N/A	N/A	N/A	Myron B. Thompson
None	N/A	N/A	N/A	N/A	N/A	N/A	N/A	N/A	N/A	N/A	Innovations
None	N/A	N/A	N/A	N/A	N/A	N/A	N/A	N/A	N/A	N/A	Nawahi
None	N/A	N/A	N/A	N/A	N/A	N/A	N/A	N/A	N/A	N/A	Voyager
None	N/A	N/A	N/A	N/A	N/A	N/A	N/A	N/A	N/A	N/A	West Hawaii Explorations Academy
None	N/A	N/A	N/A	N/A	N/A	N/A	N/A	N/A	N/A	N/A	Kua O Ka La
None	N/A	N/A	N/A	N/A	N/A	N/A	N/A	N/A	N/A	N/A	Halau Lokahi
None	N/A	N/A	N/A	N/A	N/A	N/A	N/A	N/A	N/A	N/A	Ke Kula Niihau O Kekaha
None	N/A	N/A	N/A	N/A	N/A	N/A	N/A	N/A	N/A	N/A	Kamaile
None	N/A	N/A	N/A	N/A	N/A	N/A	N/A	N/A	N/A	N/A	Hawaii Tech Academy
None	N/A	N/A	N/A	N/A	N/A	N/A	N/A	N/A	N/A	N/A	Education Laboratory
None	N/A	N/A	N/A	N/A	N/A	N/A	N/A	N/A	N/A	N/A	Waters of Life
None	N/A	N/A	N/A	N/A	N/A	N/A	N/A	N/A	N/A	N/A	Lanikai
None	N/A	N/A	N/A	N/A	N/A	N/A	N/A	N/A	N/A	N/A	Kona Pacific
15137/540	00-PGM-50037	Teacher	A	1.0	N/A	BU5	J1	9/27/2010	Not sure, since director is new. Director was aware as of 9/27/10	Pending with last contact 11/05/10	Halau Ku Mana NCPCS
None	N/A	N/A	N/A	N/A	N/A	N/A	N/A	N/A	N/A	N/A	Hawaii Academy of Arts & Sciences
None	N/A	N/A	N/A	N/A	N/A	N/A	N/A	N/A	N/A	N/A	Kawaikini
None	N/A	N/A	N/A	N/A	N/A	N/A	N/A	N/A	N/A	N/A	Volcano

Department of Education - Charter Schools  
Expenditures Exceeding Federal Fund Ceiling

Table 16

<u>Prog ID</u>	<u>Appropriation Ceiling</u>	<u>Ceiling Increase</u>	<u>Date of Increase</u>	<u>Reason for Exceeding Ceiling</u>	<u>Recurring (Y/N)</u>	<u>GF Impact (Y/N)</u>	<u>ARRA?</u>
NONE							

Department of Education - Charter Schools  
Intradepartmental Transfers

Table 17

<u>From Prog ID</u>	<u>To Prog ID</u>	<u>Amount Transferred</u>	<u>Date of Transfer</u>	<u>Reason for Transfer</u>	<u>Recurring (Y/N)</u>
NONE					



Department of Education - Charter Schools  
CIP Summary

Table 18

Priority	Project Title	FY12 \$\$\$	FY13 \$\$\$	MOF
1	KAMAKAU-PCS, ROAD ACCESS IMPROVEMENT, KANEOHE-HAWAII	4,866		C
2	HAKIPUU LEARNING CENTER, BUILDING, OAHU	1,404	8,892	C
3	LANIKAI - ADA TRANSITION ACCESSIBILITY	375		C
4	WHEA-PCS, RELOCATION OF WHEA CAMPUS DUE TO KONA AIRPORT EXPANSION (NOISE MITIGATION)	5,000		C
5	HALAU KU MANA-PCS, REPAIRS TO EXISTING (5) TRAILERS INCLUDING FLOOR, LEAKING ROOFS, WINDOW REPAIRS AND AIR QUALITY REMEDIATION	25		C
6	WAIMEA MIDDLE SCHOOL, RESTROOMS RENOVATION, HAWAII	60		C
7	Kawaikini - Safety Accessibility & Lighting"	204		C
8	Ke Kula Niihau O Kekaha Tent Fumigation	12		C
9	Kua O Ka La - Placement, repair and maintenance of 2 modular buildings for Elementary expansion	250	250	C
10	Kua O Ka La - Solar and wind energy system for school	345	225	C
11	WAIMEA MIDDLE SCHOOL, NIGHT LIGHT IMPROVEMENT, HAWAII	30		C
12	CONNECTIONS NEW CENTURY PUBLIC CHARTER SCHOOL	11,634	8,969	C
13	KA UMEKE'S PURCHASE OF CLASSROOM MODULARS	750		C
14	KUALAPUU ELEMENTARY SCHOOL, CLASSROOM SPACE IMPROVEMENT, MOLOKAI.	350	350	C
15	WAIMEA MIDDLE SCHOOL GYM IMPROVEMENT, HAWAII	150		C
16	KANU O KA AINA NCPCS, CLASSROOM IMPROVEMENT,HAWAII	250		C
17	WAIMEA MIDDLE SCHOOL, CAMPUS RAILING IMPROVEMENT, HAWAII	100		C
18	LANIKAI - AIR CONDITION SCHOOL	3,500		C
19	The Education Laboratory NCPCS- Facilities Replacement	2,000	15,000	C
20	KANU O KA AINA NCPCS, KUKULU PROJECT HAWAII	8,475.0	2.8	C
21	WAIMEA MIDDLE SCHOOL, WINDOW IMPROVEMENT, HAWAII	80		C
22	KUALAPUU ELEMENTARY SCHOOL LIBRARY & COMPUTER LAB	300	300	C
23	Kawaikini - Hawaiian Library & Computer Lab Learning Center	500		C
24	LANIKAI - ELECTRICAL UPGRADE	465		C
25	WAIMEA MIDDLE SCHOOL,ELETRICAL UPGRADES L2, HAWAII	30		C
26	WAIMEA MIDDLE SCHOOL, GROUNDS REPAIRS, HAWAII	110		C
27	KAMAILE - 10 CLASSROOM BUILDING EXPANSION	1,800		C
28	LANIKAI - ADMINISTRATION BUILDING	6,075		C
29	KANUIKAPONO-PCS, BUILDING IMPROVEMENT, KAUAI	79		C
30	KE ANA LAAHANA-PCS, CAMPUS IMPROVEMENT/ALTERNATE ROUTE FOR TSUMANI INUNDATION, HAWAII	15	10	C
31	IPCS PAVILLION EXTENSION, HAWAII	100		C
32	IPCS MIDDLE SCHOOL CLASSROOM FACILITY, HAWAII	100	900	C
33	NAWAHI-PCS, OFFICE IMPROVEMENT, HAWAII	8		C
34	KONA PACIFIC 5th - 8th GRADE CLASSROOM PROJECT	818		C
35	HAAS-PCS, GREENHOUSE & SHADEHOUSE, HAWAII	3		C
36	WOLPCS, RENOVATION OF SITE GRANDFATHERED IN HAWAII	97		C
37	IPCS, EXPANSION AND RENOVATION OF ADMINISTRATION BUILDING	25	350	C
38	IPCS, PLAY FIELD, HAWAII	25		C
39	HAAS-PCS, PLAY FIELD IMPROVEMENT, HAWAII	3		C
40	CONNECTION-PCS, R & M PROJECT, HAWAII	408	-	C
41	IPCS, KINDERGARTEN FACILITY, HAWAII	50	450	C
42	Voyager - Renovation of Halekauwila site.	608	-	C
43	NAWAHI-PCS, OFFICE PAINTING, HAWAII	10		C
44	HAAS-PCS, PAINTING PROJECT, HAWAII	5		C
45	Volcano School of Arts and Sciences Keakealani Campus Classrooms	4,325.3	2,471.6	C
46	MYRON B THOMPSON ACAD-PCS, ENERGY IMPROVEMENT, OAHU.	8		C
47	IPCS, PAINTING PROJECT, HAWAII	10		C
48	HAAS-PCS, CAMPUS IMPROVEMENT, HAWAII	82		C
49	Kua O Ka La - Refinishing of concrete floors stain and grout	12	6	C
50	HAAS-PCS, IRRIGATION SYSTEM, HAWAII	2		C
51	HAAS-PCS, FLOORING PROJECT, HAWAII	8		C
52	KIHEI-PCS, AIR-CONDITIONING SYSTEM UPGRADE, MAUI	25		C
53	HTA - Campus Relocation due to expansion	1,800	1,800	C

Department of Education - Charter Schools  
CIP Requests to the New Administration

Table 19

<u>Priority</u>	<u>Project Title</u>	<u>FY12 \$\$\$</u>	<u>FY13 \$\$\$</u>	<u>MOF</u>
	Same as Table 18			

Department of Education - Charter Schools  
Organizational Chart

Table 20

<u>Year of Change</u> FY11/FY12	<u>Page Number</u>	<u>Description of Change</u>
		No Changes