

NEIL ABERCROMBIE
Governor



State of Hawaii
DEPARTMENT OF AGRICULTURE
1428 South King Street
Honolulu, Hawaii 96814-2512

LATE

RUSSELL S. KOKUBUN
Chairperson, Board of Agriculture

JAMES J. NAKATANI
Deputy to the Chairperson

TESTIMONY OF RUSSELL S. KOKUBUN
CHAIRPERSON, BOARD OF AGRICULTURE

BEFORE THE SENATE COMMITTEES ON TRANSPORTATION AND
INTERNATIONAL AFFAIRS
AND
AGRICULTURE
MONDAY, 21, 2011
1:17 PM
ROOM 224

HOUSE BILL NO. 1568, H.D.2
RELATING TO AGRICULTURE.

Chairpersons English and Nishihara and Members of the Committees:

Thank you for the opportunity to testify on House Bill No. 1568 H.D.2, which proposes to add a new section to HRS 261 – A, for the State Department of Transportation to authorize the Department of Agriculture to provide biosecurity inspection facilities at air and sea ports statewide, in compliance with HRS section 150A-53 for the inspection, consolidation, deconsolidation, and treatment of cargo, and to facilitate the inspection and safe storage of cargo, and to meet the needs of each island's agricultural industries.

The Department of Agriculture supports the intent of this measure as the measure is supportive of the Biosecurity Program under section HRS 150A-53(2), authorizing that the Department shall establish, operate, or participate in operating port-of-entry facilities for state plant pest prevention programs.

The first and only biosecurity inspection facility in the State is on Maui at Kahului Airport. The ASAP Inspection facility houses the federal and state agencies responsible



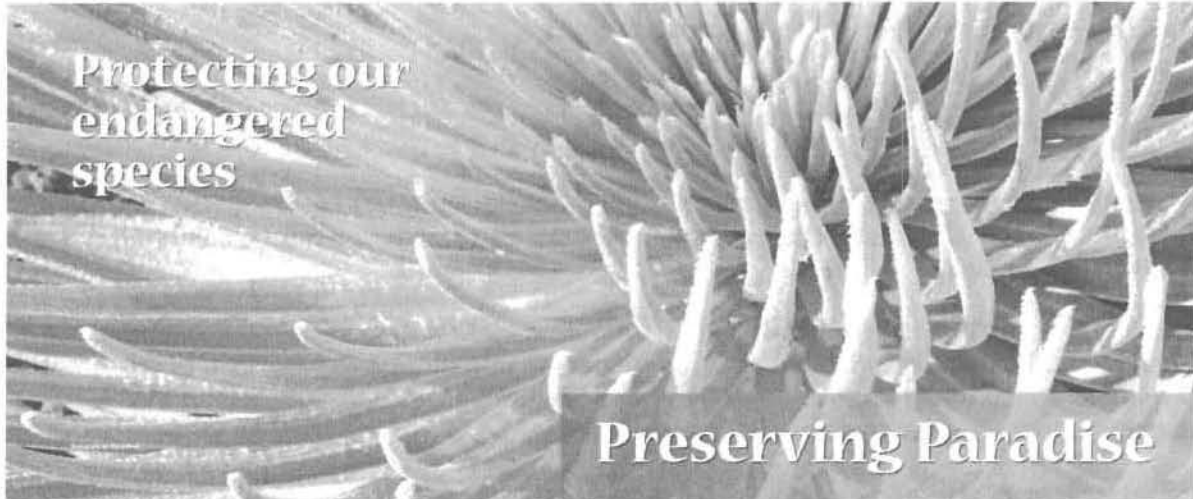
for receiving and inspecting agricultural cargo on domestic and foreign flights. The building has been designed so that inspection and treatment/destruction can be done within the inspection facility so that invasive species cannot escape. As a result, the number of pests intercepted at Kahului airport is far greater than the rest of the State, despite being 5% of the total volume of the state. As a secondary benefit, because the importers are aware of the improved inspection process, importers have chosen to wash their commodities prior to shipment into Maui, resulting in cleaner products being sent to Maui.

The Department is working closely with the Department of Transportation to identify our respective and specific needs to strengthen biosecurity initiatives to prevent entry of new pests of concern to agriculture, public health, and environment in Hawaii.

Thank you for the opportunity to testify on this measure.

ALIEN SPECIES ACTION PLAN (ASAP)

The Alien Species Action Plan was developed to prevent the introduction of alien species into Maui via Kahului Airport to the greatest extent possible. It incorporated the measures set forth in the Final Environmental Impact Statement, the Biological Assessment and the Biological Opinion for Kahului Airport Improvements.



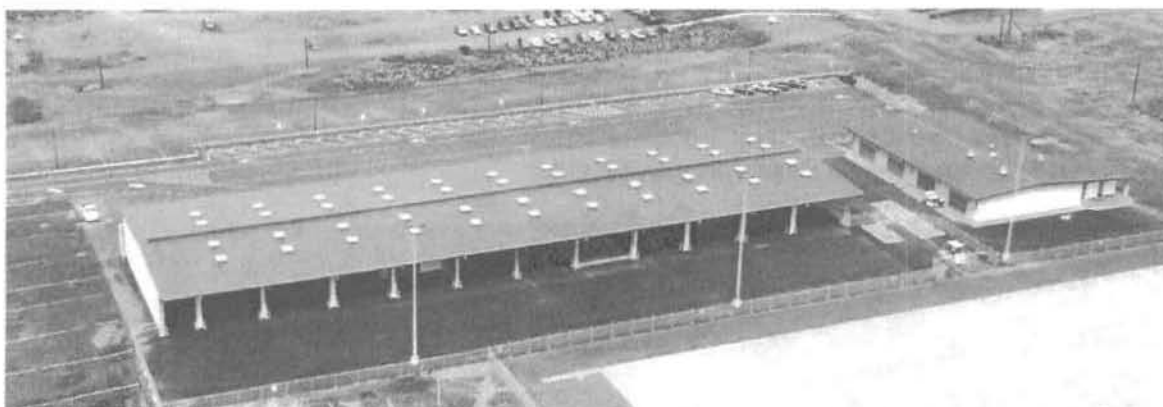
Educational displays will be set up at appropriate points at Kahului Airport to inform arriving passengers of the dangers posed by alien species.

ASAP activities include but not limited to Kahului Airport risk assessments; traveler education; training of airline and airport personnel in detection and response; inspection facilities; and additional Agriculture Inspectors.

Risk assessments focused on 1) the origin and types of intercepted pests transported by overseas passengers, baggage and cargo; 2) the movement of pests transported by interisland cargo, freight forwarders, and private aircraft; 3) the study of the flow of passengers from the gate throughout the airport; 4) an evaluation of the seasonality of invasive species; 5) an evaluation of overseas aircraft cabins and cargo holds as a risk for transporting mosquitoes and other invasive species; and 6) the determination of risk level of various commodities.



Inspectors boarded aircraft to inspect cabins and cargo holds for the presence of mosquitoes and biting midges from flights originating from West Nile infected areas (left). Cargo inspection was conducted in the parking lot fronting cargo offices at Kahului Airport (right).



The newly constructed ASAP Inspection Facility (left) was completed in December 2007 and operational in February 2008. The construction of the adjacent cargo hold facility (right) has also been completed.

The ASAP Inspection Facility houses the federal and state agencies responsible for receiving and inspecting articles arriving on domestic and foreign flights. The building has been designed so that inspection and treatment/destruction can be done within the inspection facility so invasive species cannot escape.

Dispositions of infested commodities are shown below. Infested parcels are destroyed for the presence of pests that are detrimental and not known to occur in Hawaii or are of high levels of infestation that may bring additional strains of these pests to the islands. It should be noted that since the opening of the inspection facility, there is a secondary benefit to the facility. Because importers are aware of the improved inspection process, several importers have opted to wash their commodities prior to shipment into Maui, and as such, their products are cleaner. Also in recent years, more pre-packaged greens have been entering Hawaii.

**DISPOSITION OF COMMODITIES WITH NKO PESTS IN AIR CARGO
(Number of Parcels)**

COMODITY	DISPOSITION	Jan 4, – Feb.7, 2008	Feb. 8 – Mar. 13, 2008	Jan. 4, to Feb. 7, 2009	Jan. 4 to Feb. 7, 2010
Flowers	Destroyed	6	5	5	3
	Treat/Release	--	--	--	1
Plants	Destroyed	17	--	--	--
	Refused Entry	1	6	--	--
Produce	Destroyed	174	672	404	150
	Treat/Release	-	5	1	--
Aquatic Life	Destroyed	-	1	--	--

Parcels Inspected:

	Jan 4 to Feb 7, 2008	Feb 8 to Mar 13, 2008		Jan 4 to Feb 7, 2009		Jan 4 to Feb 7, 2010	
	parcels	parcels	% change	parcels	% change	parcels	% change
cut flowers	7	105		5		135	
produce	225	752		449		55,122	
plants	18	73		3		75	
aquatic life	--	1		--		71	
animals	--	--		--		3	
total	250	931	272 %	457	83 %	55,406	22,062%