

Senate Green Practices



Overview of the Senate

- ✦ Number of offices: approximately 40 physically separate offices
- ✦ Number of employees: approximately 100 permanent employees and 125 session staff
- ✦ Area: Senate occupies approximately 20% of the entire State Capitol building area
- ✦ Public usage
 - ✦ Numerous members of the public visit the Capitol every day with increased volume during session

Background

✦ Paperless Initiative (2008 to present)

✦ Green Practices Working User Group
(“WUG” - 2009)

✦ Green Government Challenge
(Application – 2010)

Paperless Initiative

Paper Waste Reduction

Year	Session Pages Printed (Jan to Apr)	Session Pages Reduced	Annual Pages Printed	Annual Percent Reduction	Cumulative Reduction
2007	8,328,688		9,798,456		
2008	2,655,530	6,707,084	3,091,372	68 percent	
2009	1,763,443	998,219	2,093,153	33 percent	
2010	1,543,053	220,390			80 percent

Paperless Initiative

Increased E-Mail and Website Use (Jan to Apr)

Year	E-Mail Subscribers	Visitors to Website (per month)	Visits to Website (per month)	RSS Feed Hits (per month)
2007	No data	No data	No data	No data
2008	1,550	56,222	176,661	1,933,745
2009	1,770	62,327	197,085	1,940,879
2010	2,543	56,721	200,862	3,170,184

Senate Green Practices

WUG Goals

- ✧ Decrease energy consumption and carbon footprint
- ✧ Adopt energy-saving initiatives and enhance recycling efforts
- ✧ Lead by example

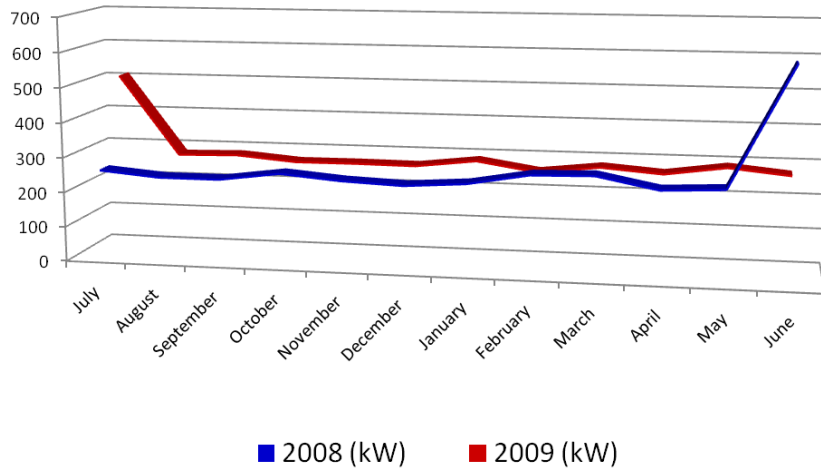
GP WUG Initiatives

- ✧ Obtained rough baseline data on energy and water consumption
- ✧ Clarified recycling procedure and labeled all recycle bins
- ✧ Green Practices survey
 - ✧ 139 surveys distributed, 38 responses from 22 different offices showed wide range of green practices, interest in being greener
- ✧ Report to Senate leadership
- ✧ Children and Youth Day recycling event



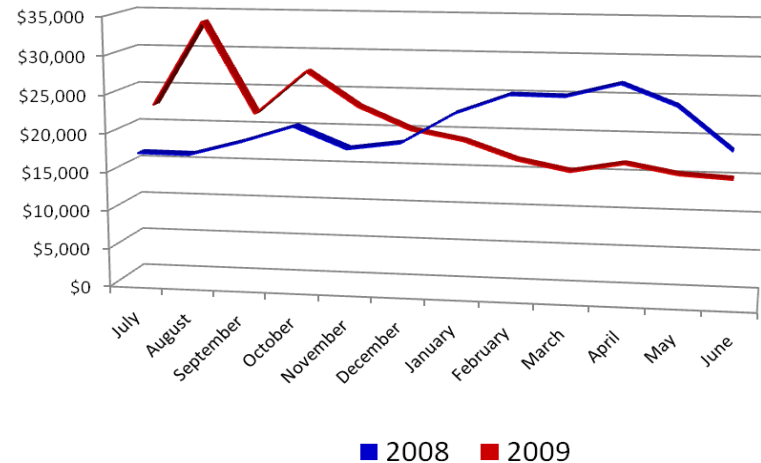
Senate's Estimated Electricity Usage and Costs (2008-2009)

Senate's Estimated Monthly Electricity Usage (2008-2009)



Estimated annual electricity costs decreased by 5.4% from 2008 to 2009

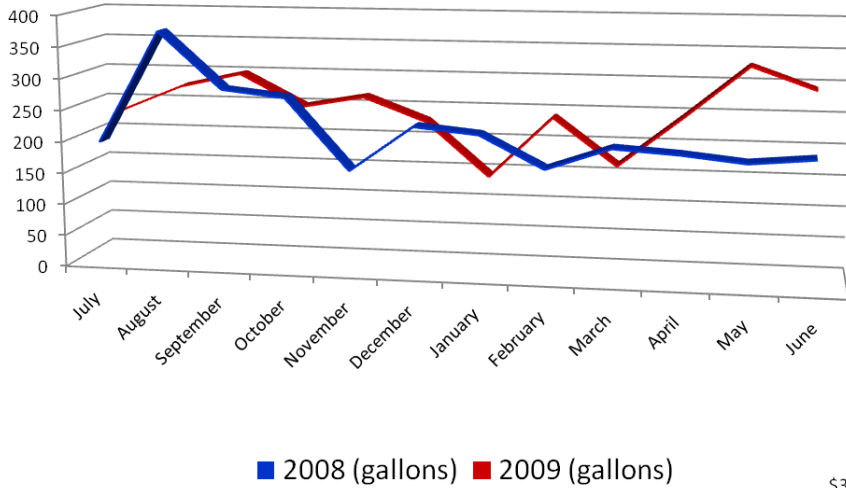
Senate's Estimated Monthly Electricity Costs (2008-2009)



Estimated annual electricity usage increased by 2.2% from 2008 to 2009

Senate's Estimated Water Usage and Costs (2008-2009)

Senate's Estimated Monthly Water Usage (2008-2009)



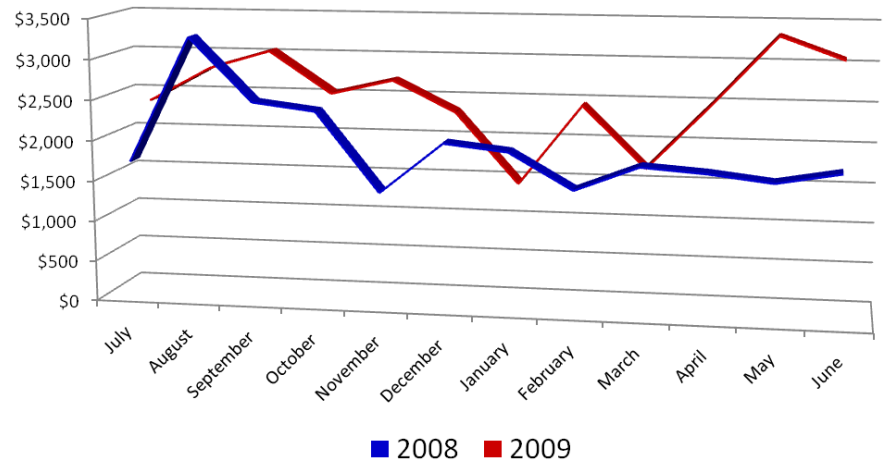
Estimated annual water usage

increased by 7.8% from 2008 to 2009

Estimated annual water costs

increased by 25.9% from 2008 to 2009

Senate's Estimated Monthly Water Costs (2008-2009)



BUT... these are rough estimates. We need better data to track the Senate's actual usage.

Green Practices Survey Results

✧ Interest in...

- ✧ Printer training/ paper-saving practices
- ✧ Developing a recycling policy
- ✧ Using recycled and/or less toxic products
- ✧ Purchasing energy-efficient equipment
- ✧ Conserving energy
- ✧ Encouraging commuter alternatives

Report to Leadership

- ✧ Purpose: To present and obtain support from Senate leadership to implement recommendations
- ✧ Provided baseline data
- ✧ Recommended participation in GGC
- ✧ Highlighted practical GGC strategies to complete the challenge

Senate Green Practices

✧ What Can Your Office Do?

✧ What Can Your Senator Do?

✧ DAGS Initiatives



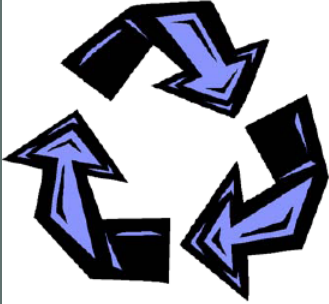
Energy Check List

Energy Check List

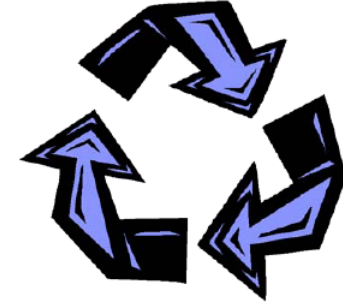
- ✓ **Turn off lights** when you leave the room.
- ✓ **Turn off your computer and monitor** at the end of the workday. If you leave your desk for an extended time, turn off your monitor.
- ✓ **Set your computer** to energy savings mode.
- ✓ **Turn off coffee maker.**
- ✓ **Turn off printer and copier** at the end of the workday.
- ✓ **Unplug equipment** that drains energy when not in use (i.e. cell phone chargers, fans, coffeemakers, desktop printers, radios, etc.)
- ✓ **Tip:** Plug all small appliances into a power strip and turn power strip off when not in use.



Recycle Bin Labeling



RECYCLE



MIXED PAPER

MIXED PAPER

Recycle Here:

White paper
Colored paper
Envelopes
Copy paper
Non-carbon forms
Index cards

Post-it Notes (sticky part torn off)

Don't Recycle Here:

Newspaper
Shredded paper
Glossy paper/Magazines
Cardboard
Paperboard (like cereal boxes)
Paper towels/plates/cups
Tissue paper
Coated paper
Groundwood paper (type in paperback books)
File folders and hanging folders

RECYCLE

Green Practices Reminder



By following these simple steps, you can

Lead By Example:

1. Print double-sided and keep a stack of previously used paper next to the printer for reuse.
2. Buy products that promote green practices, like recycled paper napkins and non-toxic cleaners.
3. Turn off equipment and lights when not in use.
4. Recycle paper in the blue bins, as described on the sign, and bundle newspapers for pick up.
5. Re-use shredded paper or newspaper instead of styrofoam when shipping packages.
6. Use Energy Star appliances, and keep refrigerators set between 38 and 41 degrees.
7. Find Aloha 'Aina days near you to recycle batteries, old equipment, and magazines.
8. Consult the Senate Portal for updates on recycling and commuter options information.



Children and Youth Day “Green Zone” Recycling



- ✿ Raised recycling awareness
- ✿ Provided easy opportunities for people to recycle items that they otherwise would not have recycled

Recycling/Donation Inventory

- ✘ 575 3-ring binders
- ✘ 65 printer/toner cartridges
- ✘ 45 phone books
- ✘ 15 boxes of magazines
- ✘ 14 pairs of shoes
- ✘ 9 computer keyboards
- ✘ 8 computer mice
- ✘ 8 boxes of household items
- ✘ 4 printers
- ✘ 3 computer monitors
- ✘ 2 computers
- ✘ 1 subwoofer
- ✘ 1 projector
- ✘ 1 cellular phone
- ✘ Various electronics
- ✘ Cardboard



Senate Green Practices



[DAGS Initiatives](#)

