

House District \_\_\_\_\_  
Senate District \_\_\_\_\_

THE TWENTY-SIXTH LEGISLATURE  
HAWAII STATE LEGISLATURE  
APPLICATION FOR GRANTS & SUBSIDIES  
CHAPTER 42F, HAWAII REVISED STATUTES

Log No: 116-0

For Legislature's Use Only

Type of Grant or Subsidy Request:

REC'D JAN 27 2011

GRANT REQUEST - OPERATING

GRANT REQUEST - CAPITAL

SUBSIDY REQUEST

"Grant" means an award of state funds by the legislature, by an appropriation to a specified recipient, to support the activities of the recipient and permit the community to benefit from those activities.

"Subsidy" means an award of state funds by the legislature, by an appropriation to a recipient specified in the appropriation, to reduce the costs incurred by the organization or individual in providing a service available to some or all members of the public.

"Recipient" means any organization or person receiving a grant or subsidy.

STATE DEPARTMENT OR AGENCY RELATED TO THIS REQUEST (LEAVE BLANK IF UNKNOWN): \_\_\_\_\_

STATE PROGRAM I.D. NO. (LEAVE BLANK IF UNKNOWN): \_\_\_\_\_

1. APPLICANT INFORMATION:

Legal Name of Requesting Organization or Individual:  
Young Men's Christian Association Of Honolulu  
Dba:  
YMCA Of Honolulu - Kalihi Branch  
Street Address:  
1335 Kalihi Street, Honolulu, HI 96819  
Mailing Address:  
YMCA Of Honolulu - Kalihi Branch  
1335 Kalihi Street  
Honolulu, HI 96819

2. CONTACT PERSON FOR MATTERS INVOLVING THIS APPLICATION:

Name CHARLOTTE MALOTT  
Title Executive Director  
Phone # (808) 848-2494  
Fax # (808) 842-7736  
e-mail cmalott@ymcahonolulu.org

3. TYPE OF BUSINESS ENTITY:

- NON PROFIT CORPORATION  
 FOR PROFIT CORPORATION  
 LIMITED LIABILITY COMPANY  
 SOLE PROPRIETORSHIP/INDIVIDUAL

6. DESCRIPTIVE TITLE OF APPLICANT'S REQUEST:

WEED AND SEED STRATEGY - OPERATING FUNDS REQUESTED FOR ONE (1) YEAR, YMCA OF HONOLULU TO SERVE AS FISCAL AGENT.

4. FEDERAL TAX ID #: \_\_\_\_\_  
5. STATE TAX ID #: \_\_\_\_\_

7. AMOUNT OF STATE FUNDS REQUESTED:

FY 2011-2012: \$ 336,065.00

8. STATUS OF SERVICE DESCRIBED IN THIS REQUEST:

- NEW SERVICE (PRESENTLY DOES NOT EXIST)  
 EXISTING SERVICE (PRESENTLY IN OPERATION)

SPECIFY THE AMOUNT BY SOURCES OF FUNDS AVAILABLE AT THE TIME OF THIS REQUEST:

STATE \$ \_\_\_\_\_  
FEDERAL \$ \_\_\_\_\_  
COUNTY \$ \_\_\_\_\_  
PRIVATE/OTHER \$ \_\_\_\_\_

TYPE NAME & TITLE OF AUTHORIZED REPRESENTATIVE:

  
AUTHORIZED SIGNATURE

MICHAEL BRODERICK, PRESIDENT & CEO  
NAME & TITLE

1-26-11  
DATE SIGNED

# Application for Grants and Subsidies

If any item is not applicable to the request, the applicant should enter "not applicable".

## I. Background and Summary

This section shall clearly and concisely summarize and highlight the contents of the request in such a way as to provide the State Legislature with a broad understanding of the request. Include the following:

1. A brief description of the applicant's background;

### **OVERVIEW**

Violent crime in many American communities remains unacceptably high despite the significant accomplishments in crime reduction that have been made through several new initiatives of the U.S. Department of Justice (DOJ). Weed and Seed is an outstanding example of one of these innovative approaches to crime reduction.

In 1991, DOJ established Operation Weed and Seed as a community-based, multi-agency approach to addressing violent crime, gang activity, drug use, and drug trafficking in communities that were hardest hit by violence and eroding social and economic stability. Weed and Seed is designed to reduce the impact of violent crime on communities; provide prevention, intervention, and treatment services for substance abuse and other social problems; and revitalize communities through improved housing and economic development.

Weed and Seed is a comprehensive strategy – not simply a program – to assist communities in bringing people and resources together to prevent and control crime and improve the overall quality of life. The Weed and Seed strategy operates on the following principles: collaboration, coordination community participation and leveraging. This approach gives communities experiencing high crime and social and economic decay a comprehensive structure, critical planning tools, and access to a national network focused on crime prevention, citizen safety, and neighborhood revitalization. The initiative allows communities using the Weed and Seed strategy to develop and undertake efforts tailored uniquely to the issues, needs, and concerns of each neighborhood. Operation Weed and Seed began in three pilot sites in 1991; since that time, it has spread quickly to designated high-crime areas throughout the nation. By early 2005, more than 300 communities had become Weed and Seed sites.

Weed and Seed is managed and administered at the national level through the Community Capacity Development Office (CCDO), a program office within DOJ's Office of Justice Programs. CCDO provides various services, technical assistance,

training programs, and resources to support local Weed and Seed strategies. CCDO developed this manual to assist new and existing Weed and Seed sites with creating and implementing Weed and Seed strategies. Contact CCDO directly at 202-616-1152 or [www.ojp.usdoj.gov/ccdo](http://www.ojp.usdoj.gov/ccdo) for additional information on any of the issues discussed in this Grant In aid.

2. The goals and objectives related to the request;

The purpose of Weed and Seed is to reduce violent and drug-related crime in designated high-crime communities throughout the nation. A comprehensive approach is used to reduce and prevent crime and improve residents' overall quality of life. As a result, law-abiding citizens are able to live, work, and raise their families in a safer and more prosperous environment.

**VISION**  
Safe and Thriving Communities

**MISSION**

The primary objective at each Weed and Seed site are to:

- To promote comprehensive strategies to reduce crime and revitalize communities
- Develop a comprehensive community-based strategy to control and prevent violent crime, gang activity, drug trafficking, and drug-related crime.
- Coordinate existing and new government and private-sector initiatives, criminal justice efforts, and human services and concentrate those resources in designated neighborhoods to maximize their impact.
- Mobilize community residents to assist law enforcement in identifying and removing violent offenders and drug traffickers from their neighborhoods, assist human service agencies in identifying and responding to social service needs, and participate more fully in community planning and decision making processes.

**FOUR COMPONENTS**

The Weed and Seed strategy is a multilevel strategic plan that includes four basic components.

**LAW ENFORCEMENT**

The law enforcement component is designated to weed out crime and violence, particularly violent crime, gang activity, drug trafficking, and drug-related crime. Efforts are directed mainly at most serious and visible criminals in the designated area. Reducing both crime and citizen fear returns hope to residents living in distressed neighborhoods and sets the stage for community revitalization.

- Identify effective law enforcement practices to enhance community safety
- Identify effective prosecution strategies to suppress crime

In most Weed and Seed sites, crime suppression activities are undertaken by joint task forces that represent a collaboration of law enforcement agencies from all levels of government and benefit from

the various resources each agency brings to the effort. Suppression activities include repeat-offender programs, gun abatement, targeted patrols, intensified drug investigations, and targeted prosecutions. Other law enforcement tactics involve various aspects of the criminal justice system, such as community courts, victim-witness protection and services, and offender reentry programs.

### **COMMUNITY POLICING**

Community policing supports intensive law enforcement operations and serves as a bridge to the seeding components of Weed and Seed. Community policing embraces two key concepts: community engagement and problem solving. Under this model of policing, officers establish an ongoing dialog with community residents to solve crime problems through a systematic process that addresses the underlying causes of crime. Community policing strategies foster a sense of responsibility within the community for solving crime problems, focus on increasing police visibility, and develop cooperative relationships between police officers and residents. Examples of community policing activities include foot and bicycle patrols, police mini-stations, victim referrals to support services, nuisance abatement programs, and police athletic leagues.

- Enable communities to assess needs and capacity to address crime
- Assist communities in forming collaborative law enforcement partnerships
- Enable communities to mobilize residents against crime and drugs

Community mobilization is also important in community policing activities. Programs that encourage community participation and help prevent crime include neighborhood watches, citizen marches, and rallies, prayer services, drug-free zones, and graffiti removal.

### **PREVENTION, INTERVENTION, AND TREATMENT**

The prevention, intervention, and treatment component of the Weed and Seed strategy focuses on neighborhood efforts to enhance protective factors while reducing risks, thus promoting wholesome behavior that can lead to good health, well-being, and personal success.

- Risk factors such as economic deprivation, family management problems, and early academic failure increase the likelihood that a child will develop health and behavior problems in adolescence.
- Protective factors such as positive individual characteristics, bonding, healthy beliefs, and clear standards set by parents and society reduce the impact of risk factors on children.

The prevention, intervention, and treatment component concentrates an array of human services on the designated community to create an environment in which crime and violence cannot thrive. Links among law enforcement and social service agencies, the private sector, and the community must be strengthened to improve the overall quality of services to residents.

*Safe Havens* are important elements of the prevention, intervention, and treatment component. They provide a mechanism for organizing and delivering an array of youth- and adult-oriented services in a multi-service setting such as a school or community center. All Weed and Seed sites are encouraged to have at least one Safe Haven. Activities conducted in Safe Haven programs include community-based services such as childcare, after-school programs, tutoring, recreation, parenting courses, drug

prevention programs, substance abuse treatment, mental health services, family counseling, and medical care.

## **NEIGHBORHOOD RESTORATION**

The fourth component of Weed and Seed focuses on improving and revitalizing the economic and social conditions of the designated communities through neighborhood restoration strategies. Expanding the economic vitality of a community helps to keep crime and disorder from thriving. As with the other Weed and Seed components, neighborhood restoration can be achieved only by coordinating federal, state, county, and private-sector resources. Strategies focus on economic development, employment opportunities for residents, and improvements to the housing stock and physical environment of the neighborhood.

- Promote approaches to enhance effective and culturally relevant, prevention, intervention, treatment, and aftercare programs and capacity.
- Promote effective neighborhood restoration and economic development efforts to revitalize family and community economic stability

## **SUSTAINABILITY PLAN**

As the Weed and Seed federal designation period of five years expires, federal funds and active federal support are terminated. The Weed and Seed strategy needs to continue with other resources. All three sites have received the designation of “graduated”. All three sites need to establish funding and long-term organizational management. The Steering Committees of each site have been meeting monthly to continue the Weed and Seed strategy into the future. Legislative and agency actions are needed to make this happen. Agencies with law enforcement and social service missions would be appropriate partners. In the long term, it is expected that Weed and Seed will become a vital component of the community.

In September 2010, the US Department of Justice released the Final Report of an Independent Evaluation of the National Weed and Seed Strategy done by RTI International from North Carolina.

- “ Successful local implementation of the W&S strategy by diverse grantees using varied approaches in diverse settings”
- “ Improved outcomes in many sites, including reduced crime and improvement in other problems”
- “ The evaluation found support for both the viability and effectiveness of the four central components of law enforcement, community policing, prevention/intervention/treatment and neighborhood revitalization. As the W&S strategy intends, these components provide a synergy with benefits greater than the sum of its parts.”

The goal for Weed and Seed is to eventually make it part of an organization which will continue the successful efforts. This organization will coordinate the strategy throughout the island of Oahu and possibly the State of Hawaii. It will be locally based, but maintain contact with the national office for technical assistance, information of trends, Best Practices and training opportunities. This Weed and Seed Hawaii organization could succeed as a division of an existing governmental department. This will eliminate creating a new bureaucracy. Possible agencies would be the Department of Labor-Office

of Community Services, the Department of Human Services, City and County of Honolulu or the Governor's Office.

3. State the public purpose and need to be served;

The Weed and Seed strategy is based on a two-pronged approach:

- 1) Law enforcement agencies and criminal justice officials cooperate with local residents to “**weed out**” criminal activity in the designated area.
- 2) Social service providers and economic revitalization efforts are introduced to “**seed**” the area, ensuring long-term positive change and a higher quality of life for residents.

The Weed and Seed strategy recognizes the importance of coordinating federal, state, and county offices; law enforcement agencies; and criminal justice initiatives with social service providers and private-sector and community efforts to maximize the impact of existing programs and resources and identify and fill in gaps in services.

It also recognizes the importance of community participation. Community residents must be centrally involved and empowered to assist in solving problems in their neighborhoods. In addition, the private sector is a pivotal partner in the Weed and Seed strategy.

4. Describe the target population to be served;

The strategy will continue its work in the three(3) Federal designated sites: Kalihi-Honolulu (as expanded), Waipahu, and Ewa-Ewa Beach.

The Kalihi and Waipahu sites have over 51% of the population that are low-moderate income and the Ewa site has 49% low-moderate income. The Kalihi and Waipahu sites also have Public Housing as well as subsidized housing in the sites.

By the criteria of the Department of Justice, these sites have high crime, drug related crime, truancy, gang related crime, high unemployment, high number of persons under correctional supervision, public housing development, limited economic activity and lack of organized groups.

5. Describe the geographic coverage;

The strategy will continue its work in the three (3) Federal designated sites: Kalihi-Honolulu (as expanded), Ewa-Ewa Beach, and Waipahu. In-directly, however, neighboring communities will benefit from the model strategies and systems of Hawaii Weed and Seed.

6. Describe how the request will, in the case of a grant, permit the community to benefit from those activities; or for a subsidy, reduce the cost incurred by the organization or individual in providing a service available to some or all members of the public.

Weed and Seed convenes various stakeholders to address issues of concern in the respective neighborhoods. By doing so, it avoids duplication and also brings awareness to residence on types of and access to services needed.

The target populations, principally the communities, will engage in project planning, implementing, and evaluating processes to ensure that the needs of the respective communities are being adequately addressed.

Each site is governed by a Steering Committee made up of stakeholders from the community (residents, churches, service providers, and businesses). The role of the Steering Committee is to identify areas of greatest need, coordinating programs and services, and ensuring everyone is involved in working toward the same goals.

The general public is welcome to participate in all stages of Weed and Seed projects. More over, the data collected, i.e. eradications, illegal paraphernalia recovery, etc., will be made available to the general public for their use.

## **II. Experience and Capability**

### **A. Necessary Skills and Experience**

The applicant shall demonstrate that it has the necessary skills, abilities, knowledge of and experience relating to the request. State your experience and appropriateness for providing the service proposed in this application. The applicant shall also provide a listing of verifiable experience of related projects or contracts for the most recent three years that are pertinent to the request.

Pertinent projects: Site coordinators worked with community to plan, organize, implement and leverage resources.

- National Night Out - 500 people attend a celebration of "Taking back our Community" and keep our neighborhood safe
- Real and Powerful (RAP) and Teen RAP - police officers mentoring teens
- Youth Patrol - police officers teaching teens to keep their community safe
- Culinary Arts - police officers working with a guest chef in teaching teens life skills of cooking
- Drive Safe 4 Ewa - community working with police officers in community outreach in "Don't Drink and Drive" campaign
- Urban 808 - police officers involved with youth and graphic artist in doing street art instead of negative graffiti

Resumes of the site coordinators follow. As a preface, please note that all have been involved with Weed and Seed, respective to their capacities, for several years.

- Kahele Porter, Site Coordinator
- Lorrie Kanno, Site Coordinator
- Gale Braceros . Site Coordinator

RESUME Mark Kahele Porter 1141 Rycroft St. Honolulu, Hawai'i 96814 808-277-2132

### **Objective**

To take a leading role in the coordination "weeding" and "seeding" efforts in Weed & Seed's site 1 community. To help increase the presence of positive resources and activities for youth and families. To build and maintain lasting and productive working relationships with community leaders, residents, churches, schools, service providers, police, parks and recreation, public housing authorities and businesses. To mobilize the community to take positive action in their own neighborhood.

### **Education**

B.A. degree in Journalism, 2000, University of Hawai'i at Manoa  
Proficient in the Hawaiian language

### **Employment**

Site Coordinator, April 2, 2005 -present, Weed & Seed (Kalihi-Palama, Chinatown) Takes a leading role in implementing the Department of Justice's community-based crime prevention initiative in some of Honolulu's most impoverished communities. Works with law enforcement and other community stakeholders to address community safety and quality of life issues. Builds empowerment amongst community residents so that they take ownership of the areas they live in. Works with the community to identify, plan, and implement projects and activities that they feel will benefit their neighborhoods. Ensures that the four components of the Weed & Seed strategy; Neighborhood Restoration, Prevention/Intervention/Treatment, Community Policing, and Law Enforcement; are maintained and/or moving forward.

Prevention Specialist, Oct. 2, 2002 to April 1, 2005, Coalition for a Drug-Free Hawaii Established a Kalihi Valley Collaborative (KVC) composed of community representatives to address violence and prevent substance abuse. Worked collaboratively with KVC members to develop a community needs assessment and plan of action to address and prevent violence and substance abuse in the community. Facilitated community meetings and coordinated various community events. Successfully implemented the Second Step violence prevention program to 3 cohorts of Ka'ewai Elementary School 5th graders and their parents.

Prevention Specialist, Oct. 2, 2000 to Oct. 1, 2002, Coalition for a Drug-Free Hawaii Worked to implement the Strengthening Hawai'i Families program in Royal and Ka'a'awa Elementary Schools, the Waimanalo community, and Mayor Wright Homes by carrying out and taking on various tasks, roles and responsibilities. Worked as part of "The Family Partners" in Mayor Wright Homes to plan, organize and carry out community events for residents of MWH and the Kalihi-Palama district. Worked in partnership with various other service provider agencies, schools, community leaders, and youth to educate and bring awareness to several different communities on O'ahu. Worked as part of the Ko 'olauloa Community Partnership to plan and carry out a community event that fulfilled its goal in joining people, from all of Ko'olauloa's smaller districts, to work together and pool each others' resources.

Contributing Writer, 2000, Ka Leo Hawaii Newsletter Editor, 2000, Kalihi YMCA Data Entry, 1999 -2000, Kalihi YMCA Aquatics Instructor/Lifeguard, 1998 -2000, Kalihi YMCA Facilitator, 1998 -1999, Coalition for a Drug-Free Hawaii Worked with a team of facilitators to present the



Strengthening Hawai'i Families curriculum to its participants at the Royal and Kapalama Elementary School sites. Reinforced family and cultural values using Hawaiian concepts as reference points. Guided families through exercises. Introduced and helped families familiarize themselves with healthy and productive problemsolving techniques.

Volunteer, 1996 -1998, Kalihi YMCA Assisted in the administration office. Professional Musician, 1989 -1996 Played guitar and sang professionally in a band. Opening act for concerts held at Blaisdell Arena, Aloha Tower, Kualoa Ranch, and the Waikiki Shell.

1989-1996 Graphic Artist/Pressman, Printa-Quick Administrative Assistant, Maluhia Long Term Health Care Facility Greenhouse Assistant, Lyon Arboretum Kitchen Help, Orson's Chowderette Painter, Cove Expo & Design Courtesy Clerk, Safeway

# Lorrie W. Kanno

---

**EDUCATION** Bachelor of Arts – Social Work and Bachelor of Arts – Liberal Arts: Behavioral Science, 1989

CONCORDIA UNIVERSITY, Portland, Oregon

**WORK** Weed & Seed Coordinator, Site II – July 2009 to present

**EXPERIENCE** KALIHI YMCA, Honolulu, Hawai'i

Responsible for maintaining an inventory of resources and programs in the designated neighborhoods, maintaining contact with the community by meeting with the residents and attending meetings and events organized by community groups to be informed of the needs of the residents, maintaining positive relationships with community agencies and businesses to facilitate communication among agencies in the community to avoid duplication of services, to support programs initiated by community groups, and to support good working relationships between agencies and residents, providing support to enhance successful established programs and coordinate with Weed & Seed police officers to develop intervention and prevention programs, preparing monthly reports on site activities for the Weed & Seed Steering Committee, providing staff support to the Weed & Seed Committees in the Site, building capacity of Community and assist in developing a long-range sustainability plan, utilizing organizational skills for record keeping, monitoring Weed & Seed partners, follow-up, and keeping track of various timeliness and deadlines and developing resources and a sustainability infra-structure for "seeding" efforts.

Rural Youth Program Director/Outreach Services Supervisor – October 2004 to June 2009

KALIHI YMCA, Honolulu, Hawai'i

Responsible for the management of daily operations of sites from Waipahu to Waianae. Serves as a liaison between schools, service providers, churches, and families. Responsible for recordkeeping and site reports. Provides direct supervision to staff and monitors progress of program participants. Works Facilitates staff meetings/trainings and participates in Association personnel trainings/meetings and community activities/projects.

Senior Program Director – June 1994 to September 2004

YMCA COMMUNITIES IN SCHOOLS OF HAWAI'I PROJECT, Waipahu, Hawai'i

Responsible for the management of daily operations of site. Serves as a liaison between schools, service providers, churches, and families. Responsible for overall records and reports of various programs to funding sources; monitoring and reporting of select clientele. Responsible for the coordination of services for students and families, developing collaborations between service providers, bridging the community with resources, facilitation of all programs, production of quarterly newsletters, training in the 'Ohana Management System and supervision of all staff and volunteers. Works closely with Executive Director and other Program staff in writing grants; facilitating staff meetings/trainings, participating in Association personnel trainings/meetings and community activities/projects.

**COMMUNITY** Parent Volunteer – August 2004 to present

**SERVICE** KAMEHAMEHA SCHOOLS CLASS OF 2017 & 2019, Honolulu, Hawai'i

Assist with planning events for the families and students of KS Class of 2017 and 2019.

Volunteer Soccer Coach – January 2006 to March 2009

*AYSO WEST OAHU REGION 769, Waipahu, Hawai'i*

Responsible for coaching boys and girls basic soccer skills in the U5, U6, and U8 age division.

**CERTIFICATES** First Aid/CPR for Adults, Medic First Aid, Honolulu, Hawai'i, August 2010

Senior Director, YMCA of the USA, Honolulu, Hawai'i, November 2008

Current Support Director Institute, YMCA of the USA, Honolulu, Hawai'i, May 2001

Introduction to Not-For-Profit Marketing, YMCA of the USA, Honolulu, Hawai'i, November 1999

Pricing, YMCA of the USA, Honolulu, Hawai'i, November 1999

YMCA Program Management and Development, YMCA of the USA, Honolulu, Hawai'i, November 1999

Grant Proposal Writing Workshop, the Grantsmanship Center, Honolulu, Hawai'i, May 1997

Principles and Practices, YMCA of the USA, Berkeley, California, April 1997

Group Work, YMCA of the USA, Honolulu, Hawai'i, March 1996

Volunteerism and the YMCA, YMCA of the USA, Honolulu, Hawai'i, September 1995

LTP Delivery Module, YMCA of the USA, Honolulu, Hawai'i, April 1995

Problem Solving and Decision Making and Substance Abuse Prevention, YMCA of the USA, Honolulu, Hawai'i, November 1993

Basics in Community Development, Working with 10-14 Year Olds and Working with 15-17 Year Olds, YMCA of the USA, Honolulu, Hawai'i, November 1992

Program Trainer Orientation, YMCA of the USA, Honolulu, Hawai'i, October 1992

**OTHER** Healthy Honolulu Together Curriculum Writer, Kalihi YMCA, Honolulu, Hawai'i, 2009

**EXPERIENCES** Ka Ulu Pono Curriculum Writer, Kalihi YMCA, Honolulu, Hawai'i, 2009  
Alaka'i Malama Academy Planning Team Advisor, Communities In Schools of Hawai'i, Waipahu, Hawai'i, 1995 to 2003

Living Aloha Through Volunteerism Regional Conference Facilitator, Communities In Schools of Hawai'i, Waipahu, Hawai'i, 1999

Orientation to Social Services Division, Philosophy & Resources (Family Centered Strengths & Needs Based Practice), Overview of CPS Statutes, HRS 350 & 587 and Behavioral & Physical Indicators of Child Abuse and Neglect Trainings, Department of Human Services, Honolulu, Hawai'i, 1999

Alaka'i Malama Academy Teen Group Advisor, Leeward YMCA, Waipahu, Hawai'i, 1992 to 1994

Hawaiian Leadership Development Conference, University of Hawai'i at Hilo, Hilo, Hawai'i, 1993 and 1994

Journey Workshop, Leeward YMCA, Waipahu, Hawai'i, 1994

YMCA Pacific Regional Conference GFT 1, Leeward YMCA, San Francisco, California, 1994

YMCA Youth Legislature State Advisor's Director, Leeward YMCA, Honolulu, Hawai'i, 1994

Assistant Boys Volleyball Coach, Pearl City High School, Pearl City, Hawai'i, 1989 to 1993

**Gale Tsuyo Braceros**  
**1726 Komo Mai Drive**  
**Pearl City, Hawaii 96782**  
**Home: 808-744-7610 Mobile: 808-232-6437**

**Experience:** YMCA of Honolulu  
Kalihi Branch  
Weed and Seed  
December 14, 2009 – present  
Present Position: Program Supervisor  
Supervisor: Charlotte Malott

**Duties:**Oversee the Weed and Seed Strategy for all three sites on Oahu, including the coordination of resources among the three Weed and Seed sites and serving as the official liaison between site coordinators and administrative branches of Weed and Seed.

Job duties are to:

- Provide resources and assistance to site coordinators.
- Coordinate projects with various agencies that involve all three sites.
- Connect three sites for activities when appropriate.
- Serve as advocate for Weed and Seed strategy.
- Serve as communication link between U.S. Attorney and Weed and Seed staff.
- Oversee site coordinators' daily operations.

YMCA of Honolulu  
Weed & Seed  
May 2, 2005 – Present  
Present Position: Site Coordinator  
Supervisor: Charlotte Malott

**Duties:**To coordinate opportunities for residents and businesses to come together and take control of their neighborhoods for a cleaner, safer community that nurtures healthy family living and working environments. This effort includes developing collaborative, synergistic working relationships between social agencies, businesses, faith-based counsels, residents, and other community organizations. The focus is to facilitate positive community action, coordinate community communications, and serve as a liaison between the community, as a whole, and the Honolulu Police Department.

- Work with residents, businesses and service providers in the community to help identify problems and needs.
- Conduct community surveys in focus areas; collect data to identify the focus areas; establish a plan of action with sub-committees.
- Attend monthly Neighborhood Board Meetings, reporting upcoming events and answering any community concerns.
- Receive complaints and concerns, reporting illegal activities from the community to HPD for timely follow up.
- Attend Association meetings for 'Ewa/Ewa Beach area, conducting Weed & Seed presentations and providing basic training.

- Facilitate Weed & Seed Committee meetings (Neighborhood Restoration Committee, Economic Development Committee, Legislature Committee and Steering Committee).
- Participate in community events, providing resources and promoting active ties relating to Weed & Seed's strategies
- Facilitate and organize community events and projects with residents, businesses and service providers (Neighborhood Restoration Projects, Community Policing events and activities, Prevention, Intervention and Treatment events)
- Build active partnerships, in and out of the community, to
  - support community initiatives.
- Attend quarterly meetings at the US Attorney Office, providing site review reports to the U.S. Attorney and serving as a liaison between site coordinators and U.S. Attorney.
- Collect crime stats and monthly weeding activities from Weed & Seed Detail to include in monthly reports to U.S. Attorney Office.
- Keep accurate stats and data, as per Federal Government requirements.
- Complete federal reports: U.S. DOJ progress report, Government Performance and Result Act (GPRA) Report.
- Research stats and data required on all federal reports.
- Monitor all federal, state and city grants for assigned site.

**Accomplishments:** Nov. 2005 YMCA Group Work Training- Certificate of Completion

April 2007 Community Capacity Development Offices (DOJ): Weed & Seed Honolulu chosen one of 8 Best Practice Weed & Seed site nationally

May 2007 Kapolei Outstanding Achievement Award (KOA) for  
Community Service-Organization

Oct. 2007 McGruff's National Crime Prevention Award of Excellence-Crime Prevention Program of the Year

**Other Experience:** Honolulu Community Action Program, Inc.  
O'ahu Head Start June 1, 1987 to April 30, 2005  
Position Held: Family Advocate Supervisor: Ellen Taoka

**Duties:** As Family Advocate, my job was to assist families with resources, linking them with community opportunities, as well as with other agencies relevant to the individual needs. The work with each individual included assisting them in establishing their short-term and long-term goals; helping them to realize their strengths as well as their needs; developing and facilitating parent workshops and training on a monthly basis.

**Other Responsibilities:**

A major portion of this job was to work consistently on developing strong relationships with other agencies in the community, effectively utilizing their services to assist families in crisis. To achieve this, team work was essential: collaboration and cooperation with other team members, teaching staff and other community specialists (state, federal, and private agencies).

- Coordinate bi-annual Health Fairs for Central and Waipahu/'Ewa districts.
- Organized weekly parent workshop/trainings for families

- Comprehensive quarterly reports for State funded sites.
- Work with agencies to meet building inspection for licensing for all new child care sites.
- Required to do two home visits with each assigned sites (20 families per site, total of 80 families)
- Work with other agencies to provide quality resources and services, establish a Individual Action Plan with each family, monitor plan and do necessary follow ups.

**Special**

**Assignments:** Job Corp Head Start 2001 – 2003

Assigned to Job Corp Head Start to lead the assessment, evaluation and reorganization process necessary for them to meet federal compliances.

'Ewa Head Start 1998 – 2001

Assigned to 'Ewa Head Start to do an assessment/evaluation/ reorganization necessary for them to meet federal requirements. In addition, helped them to:

- strengthen working partnership and relationship with Hale Kipa, Easter Seals and Child and Family Services
- complete necessary federal, city and state requirements needed to obtain licensing.

**Accomplishments:**

Early Head Start 2000 – 2003

First to implement Early Head Start for teen parents at James Campbell High School, Waipahu High School, Mililani High School and Leileihua High School: opened childcare centers; provided teen parenting workshops.

**Education:**

YMCA/Group Work (2 credits) Nov. 2005  
YMCA of Honolulu

University of Alameda  
Associates in Social Services June 17, 2005

Honolulu Community College 2002- 2003  
Completing Family Advocate Certification  
Courses: Human Development/FAMR 250  
Domestic Violence/Dynamics of Family Violence  
FAMR 133  
Working with People, FAMR 296  
Family Dynamics/Interviewing Difficult Families  
SOSER 21

Kapiolani Community College 1975  
Practical Nurse (2 years)

Waianae High School 1971-1975  
High School Diploma

**Training:**

Child Abuse/Neglect  
Second Step Program

(Selected to attend training to develop parenting classes with parents).

Drug Awareness/Recognizing the Problem  
Working with Micronesians/Learning their culture  
Federal Grant Application Training - 2007  
Community Leadership Training- 2006  
Helping Build Safer Communities- 2007  
Community Capacity Builders Forum – 2009  
Grassroots Leadership Development – 2009  
Strategic Thinking and Planning – 2009

**Conferences/Training:**

Community Capacity Development Office (U.S. Department of Justice): August 22-25, 2005 –  
Community building and sustainability  
CCDO – March 27 – 30, 2006 – Strategy Development Training  
Neighbor works America – October 12 – 15, 2006 – Plant a Seed of Change and Grow a Better  
Neighborhood  
NeighborWorks America- May 6-8, 2009  
CCDO Implementation and Strategy Training – 2010

**B. Quality Assurance and Evaluation**

The applicant shall describe its quality assurance and evaluation plans for the request. Specify how the applicant plans to monitor, evaluate and improve their results.

Weed and Seed of Hawaii's programs will be evaluated by an independent academic professional from the University of Hawaii's Public Administration Program and Public Policy Center. attachment.

More over, day-to-day progress of each site will be measured and evaluated by Project Management tools exercised by the Executive Director.

The program, in its entirety, will be accountable and responsible to the "Weed and Seed Site Wide Steering Committee", made up of volunteer community members.



**C. Facilities**

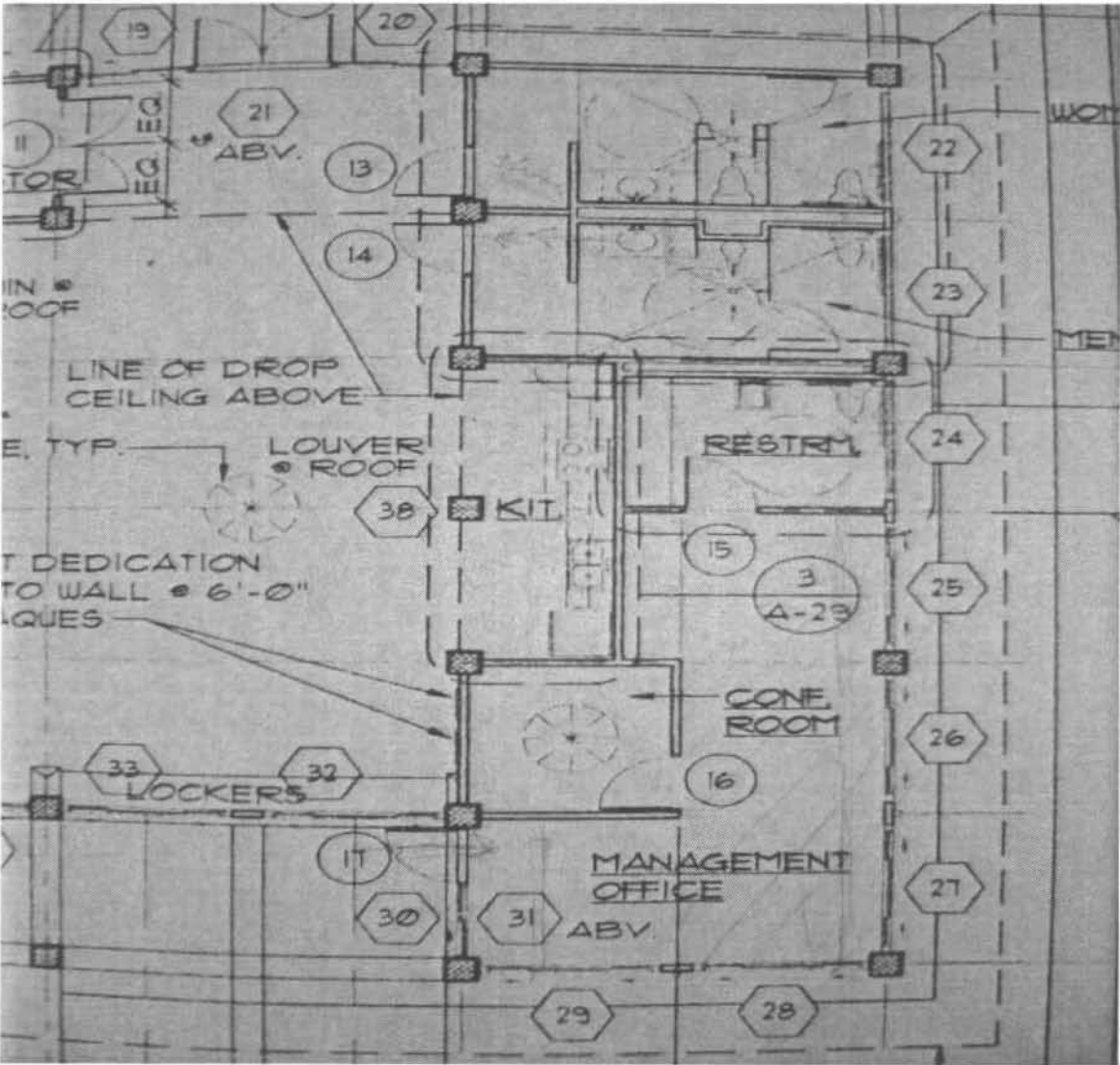
The applicant shall provide a description of its facilities and demonstrate its adequacy in relation to the request. If facilities are not presently available, describe plans to secure facilities. Also describe how the facilities meet ADA requirements, as applicable.

**Kalihi-Palama, Chinatown, Ala Moana Site**

1. Office Address where the Weed & Seed Coordinator is located: 1540 Haka Drive, Honolulu, Hawaii 96817 ( Kalakaua Homes).

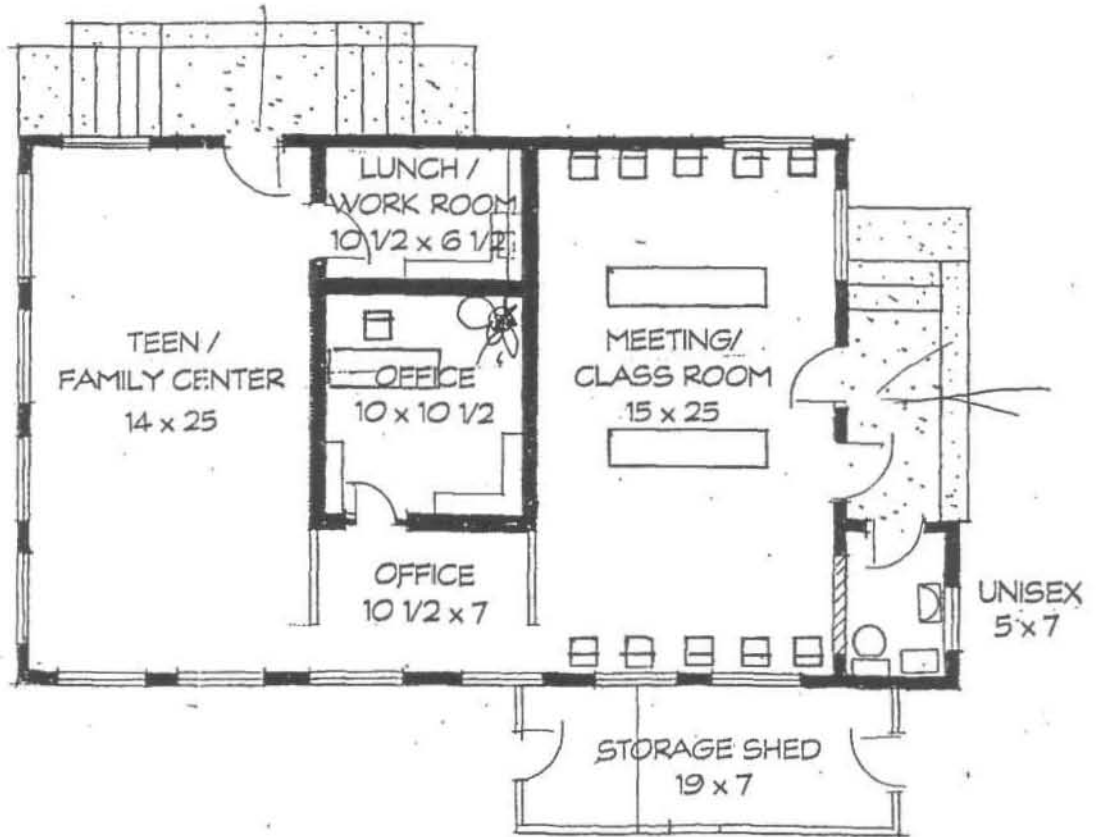
2. Meeting Place for the Steering Committee is Community Center Kalakaua Homes; 1540 Haka Drive, Honolulu, Hawaii 96817

map of Kalakaua Homes



**Waipahu Site**

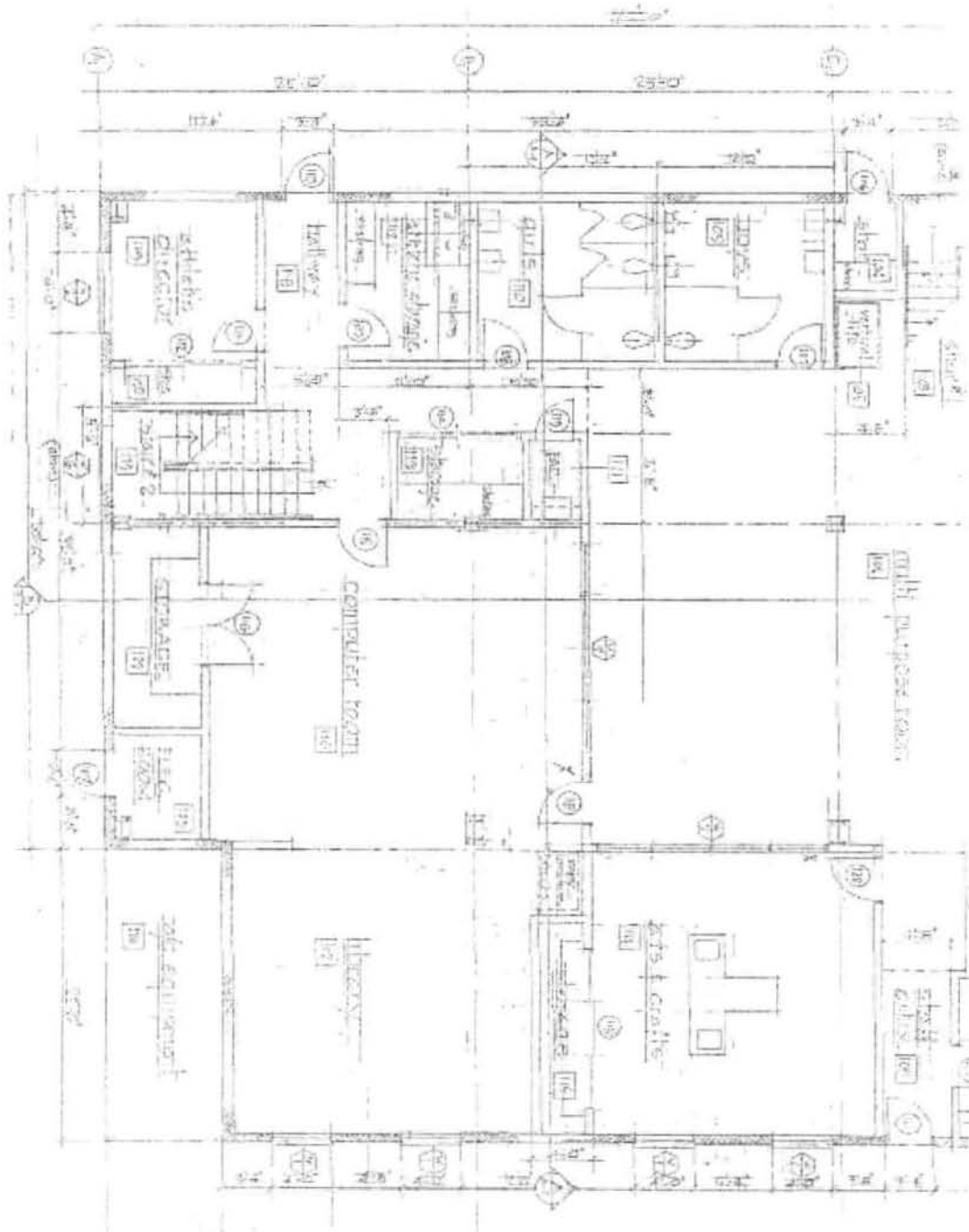
1. Office Address where the Weed & Seed Coordinator is located is 94-440 Mokuola Street, Waipahu, Hawaii 96797
2. Meeting Place for the Steering Committee, every third Tuesday, is at the Leeward YMCA Teen Center 2 – 94-440 Mokuola Street, Waipahu, Hawaii 96797

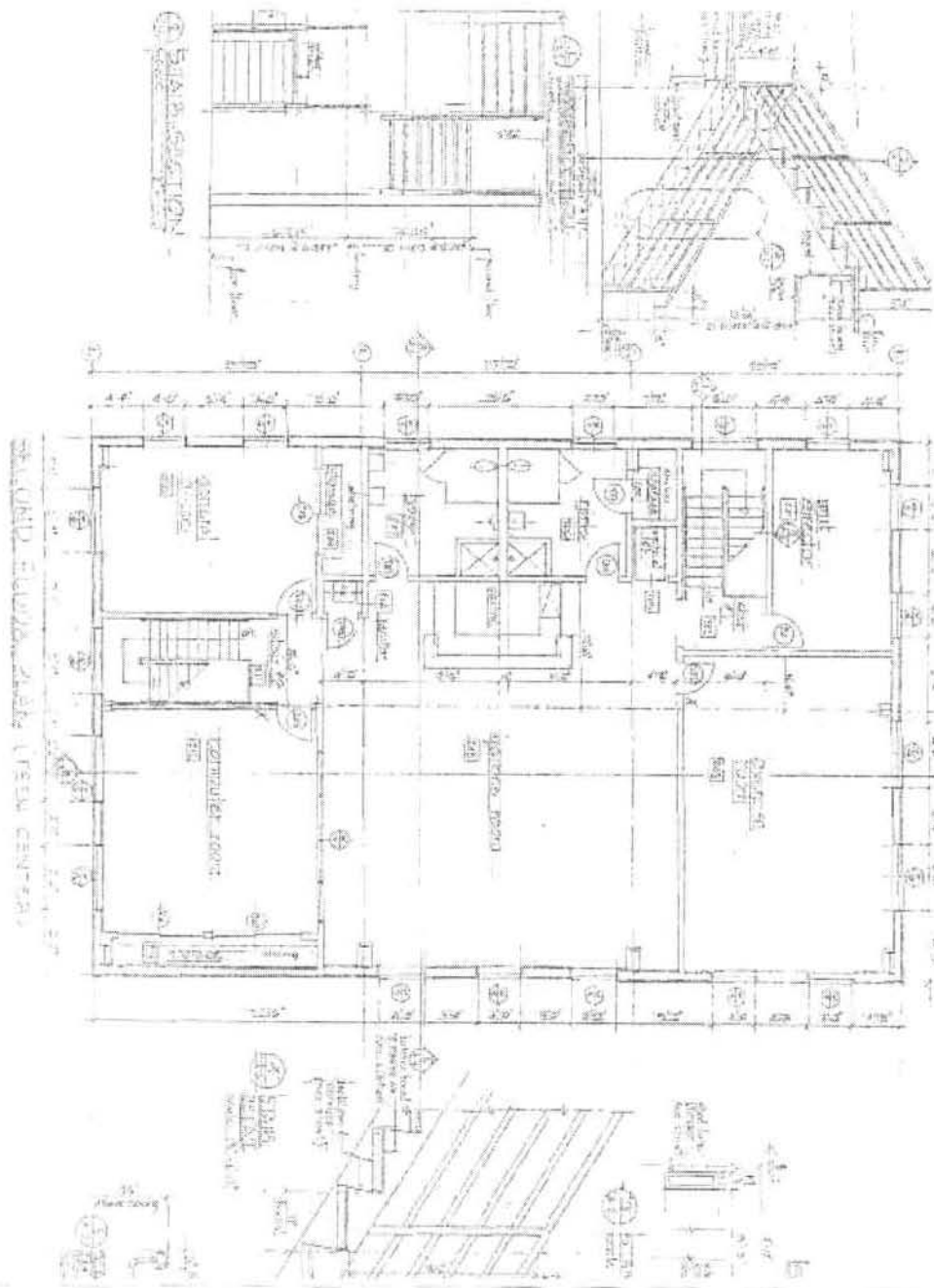


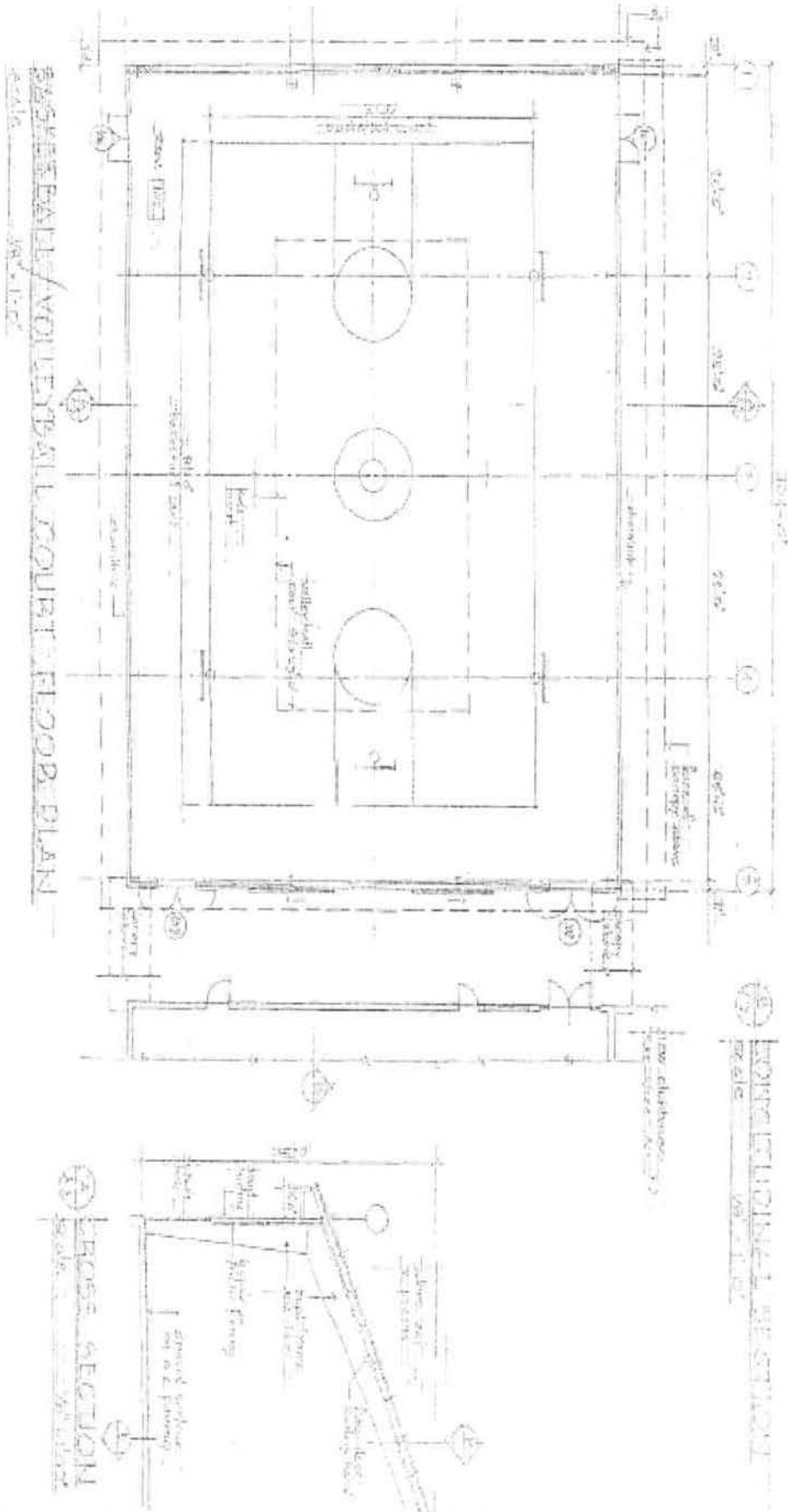
**EWA -EWA BEACH SITE**

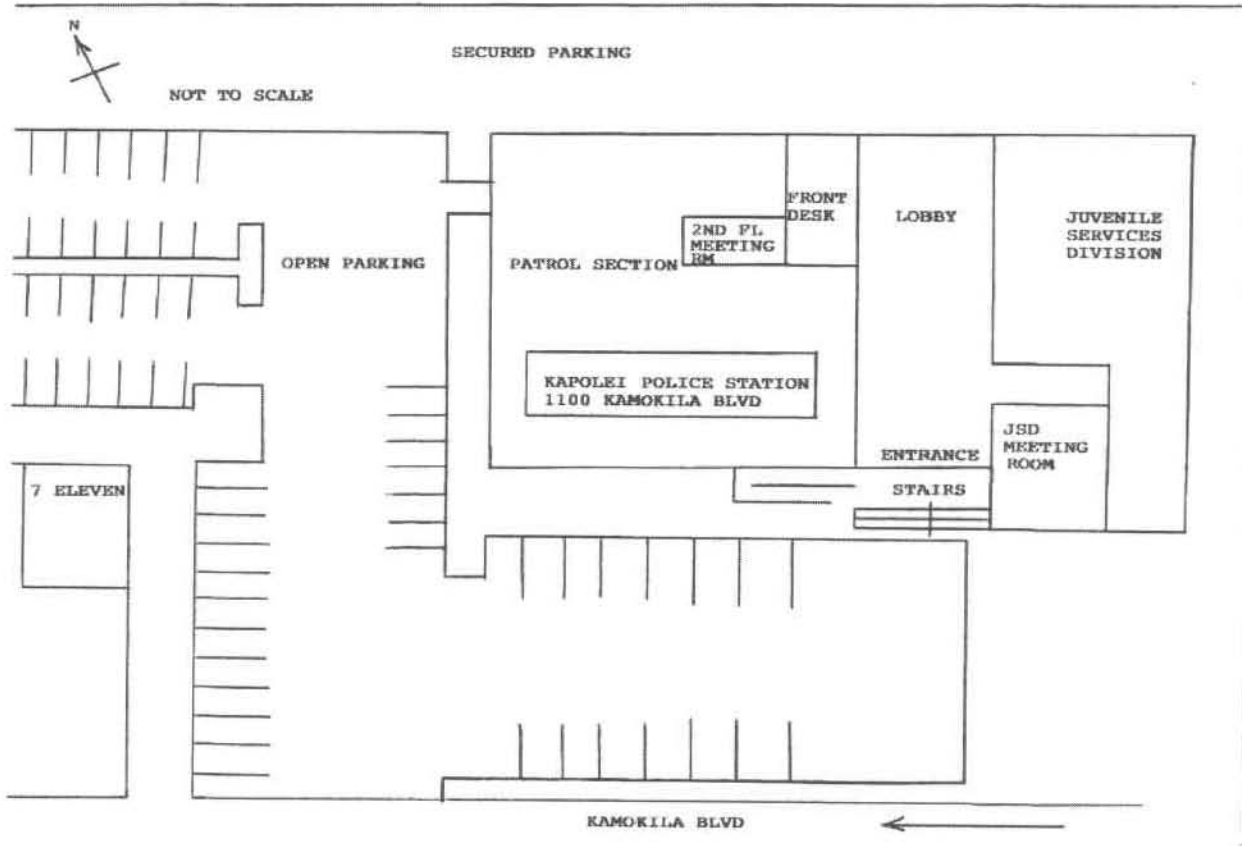
1. Office address is where Site Coordinator is located: 91-884 Fort Weaver Road, Suite A, Ewa Beach, Hawaii 96706 (Hale Pono Boys and Girls Club in Ewa Beach)
2. Meeting Place for the Steering Committee, every third Thursday, is at the Kapolei Police Station - 1100 Kamokila Blvd, Kapolei, Hawaii 96707.

map of Ewa site









### III. Personnel: Project Organization and Staffing

#### A. Proposed Staffing, Staff Qualifications, Supervision and Training

The applicant shall describe the proposed staffing pattern and proposed service capacity appropriate for the viability of the request. The applicant shall provide the qualifications and experience of personnel for the request and shall describe its ability to supervise, train and provide administrative direction relative to the request.

Supervising Director and Site Coordinator (3)

**Position:** Weed and Seed Supervising Director **Status:** Full time **Reports to:** US Attorney

**Basic Function:** To oversee the Weed and Seed strategy on the Island of Oahu. This position will be responsible coordinating the resources between the three Weed and Seed sites.

#### Job Duties:

- 1 Supervise the Site Coordinators
- 2 Communication link between US Attorney and W&S staff.
- 3 Foster community involvement in targeted areas.
- 4 Coordinate projects with various agencies that involve all three sites.
- 5 Connect three sites for activities when appropriate.
- 6 Pursue additional resources of funding for the W&S.

#### WEED AND SEED - SITE COORDINATOR

#### Duties and Responsibilities:

The Site Coordinator is assigned to the designated Site and supervised by the Weed and Seed Operations Officer. The position provides program coordination for Weed and Seed, a United States Department of Justice initiative that is administered locally by the United States Attorney's Office. "Weed and Seed is a collaborative strategy among law enforcement (federal, state and city), social service agencies, private businesses, non-profit organizations and residents to reclaim, restore and rebuild our neighborhoods." Specifically, the strategy is to "weed out" violent crime, gang activity, drug use, and drug trafficking in specified neighborhoods through law enforcement efforts and social economic programs. This is followed by assisting residents and stakeholders in developing "seed" strategies for intervention, prevention and treatment programs.

The Site Coordinator must be a "self-starter" and able to work independently as well as in groups. An attitude of compassion for low-income and impoverished residents is needed - balanced with an ability to teach them to help themselves versus having others do things for them..

The scope of the strategy includes:

1. Working with residents in the community to help identify their needs.
2. Once needs are identified, working with service providers in the community and linking with residents to maximize coordination of existing resources and initiatives.
3. Facilitating collaboration among agencies so they will be more responsive to the needs of the residents. Engaging all members of the community.
4. Attending community events and meetings to be informed on what is happening in the community.
5. Supporting economic initiatives.

**Major Duties and Responsibilities:**

1. Inventory the resources and programs in the designated neighborhood and continually update the inventory.
2. Maintain contact with the community by meeting with residents and attending meetings and events organized by community groups to be informed of the needs of the residents.
  - Participation in these meetings may require the Site Coordinator to facilitate and mediate between community members.
  - Community meetings will require interacting and building relationships with those of different cultures.
  - Community meetings will also require interacting with political offices. Building and maintaining partnerships with these offices will be necessary.
  - The Site Coordinator may be required to speak in front of groups of varying sizes.
  - Delegation skills and follow-up skills will be necessary when working with the residents and community organizations.
3. Maintain a positive relationship with community agencies and businesses to facilitate communication among agencies in the community to avoid duplication of services, to support programs initiated by community groups, and to support good working relationships between the agencies and residents.
4. Provide support to enhance successful established programs and coordinate with Weed and Seed police officers to develop intervention and prevention programs.
5. Prepare monthly reports on site activities for the Weed and Seed Steering Committee, which are required under the Weed and Seed Grant.
6. Staff support to the Weed and Seed Committees in the Site.
7. Build capacity of Community and assist in developing a long-range sustainability plan
8. Utilizing organizational skills for record keeping, monitoring Weed and Seed partners, follow-up, and
9. keeping track of various timelines and deadlines.
10. Develop resources and a sustainability infra-structure for "seeding" efforts.
11. Evaluation systems will be required. Fundraising skills may be utilized.
11. Other duties as assigned.

**Minimum Qualifications:**

Two years of progressively responsible work experience in community development programs or program for youth and other alienated groups in the community; ability to plan, organize, implement, and evaluate program activities and events; ability to work with different community constituencies including, youth, the disadvantaged, community leaders, social service providers, law enforcement personnel, and ability to understand and follow complex oral and written instructions; and ability to prepare routine reports. Or an equivalent combination of education and/or experience.

**Desirable Qualifications:**

Four year college degree in Human Services field. Experience in working with youth or other at risk groups. Experience in identifying resources in a community and linking at risk groups to those resources.



### WEED AND SEED ORGANIZATIONAL CHART



## IV. Service Summary and Outcomes

The Service Summary shall include a detailed discussion of the applicant's approach to the request. The applicant shall clearly and concisely specify the results or outcomes from this request.

A. Describe the scope of work, tasks and responsibilities.

### Scope of work for Director

- Participate in Strategic Planning with the Resource Committee, chaired by US Attorney.
- Facilitate monthly meetings with all Weed and Seed officers and staff.
- Facilitate participation by City and County Prosecutors.
- Communication link between US Attorney and W&S staff.
- Serve as advocate for Weed and Seed Strategy.
- Foster community involvement in targeted areas.
- Coordinate projects with various agencies that involve all three sites.
- Spokesperson on behalf of W&S when necessary.
- Connect three sites for activities when appropriate.
- Pursue additional resources of funding for the W&S.

### Scope of work for Site Coordinators

- Working with residents in the community to help identify their needs.
- Once needs are identified, working with service providers in the community and linking with residents to maximize coordination of existing resources and initiatives.
- Facilitating collaboration among agencies so they will be more responsive to the needs of the residents. Engaging all members of the community. -Attending community events and meetings to be informed on what is happening in the community. -Supporting economic initiatives. -Inventory the resources and programs in the designated neighborhood and
- continually update the inventory.
- Maintain contact with the community by meeting with residents and attending meetings and events organized by community groups to be informed of the needs of the residents.
- Participation in these meetings may require the Site Coordinator to facilitate and mediate between community members.
- Community meetings will require interacting and building relationships with those of different cultures.
- Community meetings will also require interacting with political offices. Building and maintaining partnerships with these offices will be necessary.
- The Site Coordinator may be required to speak in front of groups of varying sizes.
- Delegation skills and follow-up skills will be necessary when working with the residents and community organizations.
- Maintain a positive relationship with community agencies and businesses to facilitate communication among agencies in the community to avoid duplication of services, to support programs initiated by community groups, and to support good working relationships between the agencies and residents.
- Provide support to enhance successful established programs and coordinate with Weed and Seed police officers to develop intervention and prevention programs.
- Prepare monthly reports on site activities for the Weed and Seed Steering Committee, which

are required under the Weed and Seed Grant.

- Staff support to the Weed and Seed Committees in the Site.
- Build capacity of Community and assist in developing a long-range sustainability plan - Utilizing organizational skills for record keeping, monitoring Weed and Seed partners, follow-up, and keeping track of various timelines and deadlines.
- Develop resources and a sustainability infra-structure for "seeding" efforts.
- Evaluation systems will be required. Fundraising skills may be utilized.
- Other duties as assigned.

B. The applicant shall provide a projected annual timeline for accomplishing the results or outcomes of the service.

**V. Budget**

**BUDGET REQUEST BY SOURCE OF FUNDS**

(Period: July 1, 2011 to June 30, 2012)

Applicant: YMCA Of Honolulu - Kalihi Branch

<b>BUDGET CATEGORIES</b>	<b>Total State Funds Requested</b> (a)	(b)	(c)	(d)
<b>A. PERSONNEL COST</b>				
1. Salaries	126,027			
2. Payroll Taxes & Assessments	14,393			
3. Fringe Benefits	19,640			
<b>TOTAL PERSONNEL COST</b>	<b>160,060</b>			
<b>B. OTHER CURRENT EXPENSES</b>				
1. Airfare, Inter-Island				
2. Insurance	3,135			
3. Lease/Rental of Equipment				
4. Lease/Rental of Space				
5. Staff Training				
6. Supplies	10,800			
7. Telecommunication	2,760			
8. Utilities				
9. Airfare, Out-Of-State	8,100			
10. Audit Services	1,960			
11. Contractual Services Subcontracts (HPD Overtime)	84,000			
12. Mileage	5,500			
13. Postage, Freight & Delivery	6,000			
14. Publication & Printing	9,000			
15. Staff Training	600			
16. Subsistence / Per Diem	8,460			
17. Indirect Cost	30,290			
18				
19				
20				
<b>TOTAL OTHER CURRENT EXPENSES</b>	<b>170,605</b>			
<b>C. EQUIPMENT PURCHASES</b>	<b>5,400</b>			
<b>D. MOTOR VEHICLE PURCHASES</b>				
<b>E. CAPITAL</b>				
<b>TOTAL (A+B+C+D+E)</b>	<b>336,065</b>			
<b>SOURCES OF FUNDING</b>		Budget Prepared By:		
(a) Total State Funds Requested	336,065	Stacey K. Utu	(808) 848-2494	Phone
(b)		[REDACTED]		
(c)		[REDACTED]		
				Date
<b>TOTAL BUDGET</b>	<b>336,065</b>	Michael Broderick, President & CEO Name and Title (Please type or print)		



Applicant: YMCA Of Honolulu - Kalihi Branch

Period: July 1, 2011 to June 30, 2012

FUNDING AMOUNT REQUESTED						
TOTAL PROJECT COST	ALL SOURCES OF FUNDS RECEIVED IN PRIOR YEARS		STATE FUNDS REQUESTED	OTHER SOURCES OF FUNDS REQUESTED	FUNDING REQUIRED IN SUCCEEDING YEARS	
	FY: 2009-2010	FY: 2010-2011	FY:2011-2012	FY:2011-2012	FY:2012-2013	FY:2013-2014
PLANS						
LAND ACQUISITION						
DESIGN						
CONSTRUCTION						
EQUIPMENT						
<b>TOTAL:</b>						
<b>JUSTIFICATION/COMMENTS:</b>						
Not applicable						

## **VI. Other**

### **A. Litigation**

The applicant shall disclose any pending litigation to which they are a party, including the disclosure of any outstanding judgement. If applicable, please explain.

Not Applicable

### **B. Licensure or Accreditation**

Specify any special qualifications, including but not limited to licensure or accreditation that applicant possesses relevant to this request.

Not Applicable

**DECLARATION STATEMENT  
APPLICANTS FOR GRANTS AND SUBSIDIES  
CHAPTER 42F, HAWAII REVISIED STATUTES**

The undersigned authorized representative of the applicant acknowledges that said applicant meets and will comply with all of the following standards for the award of grants and subsidies pursuant to section 42F-103, Hawaii Revised Statutes:

- (1) Is licensed or accredited, in accordance with federal, state, or county statutes, rules, or ordinances, to conduct the activities or provide the services for which a grant or subsidy is awarded;
- (2) Comply with all applicable federal and state laws prohibiting discrimination against any person on the basis of race, color, national origin, religion, creed, sex, age, sexual orientation, or disability;
- (3) Agree not to use state funds for entertainment or lobbying activities; and
- (4) Allow the state agency to which funds for the grant or subsidy were appropriated for expenditure, legislative committees and their staff, and the auditor full access to their records, reports, files, and other related documents and information for purposes of monitoring, measuring the effectiveness, and ensuring the proper expenditure of the grant or subsidy.

In addition, a grant or subsidy may be made to an organization only if the organization:

- (1) Is incorporated under the laws of the State; and
- (2) Has bylaws or policies that describe the manner in which the activities or services for which a grant or subsidy is awarded shall be conducted or provided.


Further, a grant or subsidy may be awarded to a non-profit organization only if the organization:

- (1) Has been determined and designated to be a non-profit organization by the Internal Revenue Service; and
- (2) Has a governing board whose members have no material conflict of interest and serve without compensation.

For a grant or subsidy used for the acquisition of land, when the organization discontinues the activities or services on the land acquired for which the grant or subsidy was awarded and disposes of the land in fee simple or by lease, the organization shall negotiate with the expending agency for a lump sum or installment repayment to the State of the amount of the grant or subsidy used for the acquisition of the land.

Further, the undersigned authorized representative certifies that this statement is true and correct to the best of the applicant's knowledge.

YMCA Of Honolulu

  
1-26-11  
(Date)

Michael Broderick, President & CEO  
(Typed Name) (Title)