

House District 28

Senate District 12

THE TWENTY-SIXTH LEGISLATURE  
HAWAII STATE LEGISLATURE  
APPLICATION FOR GRANTS & SUBSIDIES  
CHAPTER 42F, HAWAII REVISED STATUTES

Log No: 102-0

For Legislature's Use Only

*Reid* JAN 28 2011

Type of Grant or Subsidy Request:

GRANT REQUEST - OPERATING

GRANT REQUEST - CAPITAL

SUBSIDY REQUEST

"Grant" means an award of state funds by the legislature, by an appropriation to a specified recipient, to support the activities of the recipient and permit the community to benefit from those activities.

"Subsidy" means an award of state funds by the legislature, by an appropriation to a recipient specified in the appropriation, to reduce the costs incurred by the organization or individual in providing a service available to some or all members of the public.

"Recipient" means any organization or person receiving a grant or subsidy.

STATE DEPARTMENT OR AGENCY RELATED TO THIS REQUEST (LEAVE BLANK IF UNKNOWN):

DEPT. OF HUMAN SERVICES

STATE PROGRAM I.D. NO. (LEAVE BLANK IF UNKNOWN): \_\_\_\_\_

1. APPLICANT INFORMATION:

Legal Name of Requesting Organization or Individual:  
THE CHILDREN'S ALLIANCE OF HAWAII, INC.  
Dba:

Street Address: 200 N. VINEYARD BLVD., SUITE 410  
HONOLULU, HI 96817

Mailing Address: 200 N. VINEYARD BLVD., SUITE 410  
HONOLULU, HI 96817

2. CONTACT PERSON FOR MATTERS INVOLVING THIS APPLICATION:

Name JOAN I. NAGUWA

Title PRESIDENT/EXECUTIVE DIRECTOR

Phone # (808) 599-2955 X215

Fax # (808) 599-5909

e-mail naguwa@cahawaii.org

3. TYPE OF BUSINESS ENTITY:

- NON PROFIT CORPORATION
- FOR PROFIT CORPORATION
- LIMITED LIABILITY COMPANY
- SOLE PROPRIETORSHIP/INDIVIDUAL

6. DESCRIPTIVE TITLE OF APPLICANT'S REQUEST:

**PROGRAMS AND SERVICES FOR SEXUALLY ABUSED CHILDREN AND YOUTH**

4. FEDERAL TAX ID #: \_\_\_\_\_

5. STATE TAX ID #: \_\_\_\_\_

7. AMOUNT OF STATE FUNDS REQUESTED:

FY 2011-2012: \$ 150,000.00

8. STATUS OF SERVICE DESCRIBED IN THIS REQUEST:

- NEW SERVICE (PRESENTLY DOES NOT EXIST)
- EXISTING SERVICE (PRESENTLY IN OPERATION)

SPECIFY THE AMOUNT BY SOURCES OF FUNDS AVAILABLE AT THE TIME OF THIS REQUEST:

STATE \$ 0

FEDERAL \$ 0

COUNTY \$ 0

PRIVATE/OTHER \$ 100,000.00

JOAN I. NAGUWA, PRESIDENT/EXECUTIVE DIRECTOR  
NAME & TITLE

01/28/2011  
DATE SIGNED

## Application for Grants and Subsidies

### I. Background and Summary

#### 1. Description of The Children's Alliance of Hawaii, Inc.

The mission of The Children's Alliance of Hawaii, Inc.(CAH), a 501(c)(3) corporation, is to provide care and support for sexually abused children, offering hope for the future. Located in Honolulu, Hawaii, CAH serves nearly 600 sexually abused children, youth and their families on Oahu and Kauai as an integral agency in Hawaii's service system for abused children. CAH, formerly the Friends of the Children's Justice Center of Oahu, was incorporated in 1987 by the Rotary Club of Honolulu as the nonprofit fiscal and support partner agency to the State Judiciary's Children's Justice Center of Oahu (CJC). For over 23 years, CAH provided support funding and services, enhancement items (such as clothing, emergency foster care bags to children entering the foster care system, registration fees for sports activities, school uniforms, etc.) and volunteer support to the State Judiciary's Children's Justice Center of Oahu. In 2003, CAH continued to provide support services to the CJC and expanded programs to positively impact the healing process experienced by sexually abused children. These programs include:

- **Enhancements** – *providing goods and services for child victims and siblings that enhance the child's ability to regain a sense of normalcy and increase self-esteem and confidence. Goods and services include items such as clothing, prom attire, orthodontic dental care, computers for school, uniforms, sports registration fees, etc. Funds are provided by the Theresa F. Hughes Trust, Victoria S. and Bradley L. Geist Foundation, and other private foundations and individual contributions. Some pro bono services are provided when available by community volunteer professionals. Special projects, such as CAH's Christmas Angel Project and Back to School Project, are coordinated to provide holiday gifts and school supplies for these children and youth.*
- **HEART (Healing Emotions with Art and Recreation Together)** – *increasing child victims self-esteem and ability to express their feelings and emotions in a safe environment among peers who also have been sexually abused. This unique program combines mentoring and therapeutic social/recreational strategies to enable children to experience new things, challenge themselves, make healthy choices and develop positive relationships with others as part of their healing process while engaging in fun, safe activities such as art, hiking, surfing, horseback riding, team and trust building activities, self-defense classes, poetry, community service and Hawaiian cultural activities (40% of CAH children served are ethnically part-Hawaiian).*
- **Ho`omaka** – *enabling child victims to strengthen their resiliency by working with adult mentors with whom they build a safe and trusting relationship. In a positive one-on-one relationship, children develop skills in goal-setting, problem-solving, healthy relationship-building, independent living and conflict resolution and increase their knowledge about sexually transmitted infections and pregnancy prevention.*

- **Strengthening Parents** – *providing parent support groups to enable parents to manage their own feelings about sexual abuse and to increase their parenting skills.*

## **2. Goals And Objectives Related To The Request**

Goal 1: To increase levels of self-esteem, self-efficacy and enhance the ability to express emotions among sexually abused children and youth through the use of mentoring and group social and recreational activities.

Objective 1: To provide activity-based therapeutic art and recreation group programs for 35 children.

Objective 2: To conduct 4, 7-week specialized activity sessions for sexually abused children.

Goal 2: To strengthen the resiliency of sexually abused children so they may make informed and healthy decisions for successful transition into adulthood.

Objective 1: To provide individual mentoring and teaming services to 15 children and youth.

Objective 2: To increase knowledge of teen pregnancy prevention and sexually transmitted infection prevention among children and youth.

Goal 3: To meet the immediate and long-term individual needs of sexually abused children and youth on Oahu and Kauai to enhance their sense of normalcy and increase their self worth.

Objective 1: To provide verifiably needed goods and services to 250 sexually abused children.

Objective 2: To provide school supplies and holiday gifts to 250 sexually abused children.

## **3. Public Purpose And Need To Be Served**

Child sexual abuse is a common experience for many children and is a public health problem in the United States (*Dominguez, Nelke, & Perry, 2002*). Each year, the Dept. of Human Services Child Welfare Division handles approximately 300 reported cases of sexual abuse in the State of Hawaii and 200 reported cases on the island of Oahu (*DHS/CWS*). Unfortunately, statistical data of sexual abuse incidents are usually inaccurate estimates due to underreporting (*Rutter, M. and Taylor, E., 2002*). Sexual abuse is underreported for various reasons: 1) children often do not disclose the sexual abuse to others. It is estimated that between 30 and 90 percent of all victims never tell that they have been sexually abused (*Bradley, A. and Wood, J., 1996, Forward, S., 1989*); 2) feelings of shame, guilt and responsibility by the child victim; 3) public negative

stereotypes; 4) fear of retribution, retaliation and being blamed for any potential resulting family strife and separation; and 5) lack of services and/or accessibility to services (*Child Sex Abuse in Hawaii, 2008*).

A more realistic estimate is that one **out of three** females and **one out of five** males have been victims of sexual abuse in the United States before the age of 18 years (*Dominguez, Nelke, & Perry, 2002*). Child sex abuse occurs across all ethnic and socioeconomic groups, and causes significant trauma which may result in behavioral, social, cognitive, emotional and physical problems (*Dominguez, Nelke, & Perry 2002*). If left untreated, victims are at-risk for serious and sometimes life-threatening social problems, including early pregnancy, substance abuse, homelessness, low educational achievement, mental health disorders, unemployment, self-harm, suicide, and criminal activities (*Molnar, Buka, & Kessler, 2001; Noll, Trickett, & Putnam, 2003; Day, Thurlow, & Woolliscroft, 2003*). The Children's Alliance of Hawai'i has developed three unique programs (Enhancements, H.E.A.R.T., and Ho'omaka) to assist children and youth in their healing process and to help combat the above social problems.

CAH's programs assist sexually abused children and youth in enhancing their self esteem and ability to thrive through the use of Cognitive Behavioral methodologies (CBT) which assist youth in changing thinking in order to change behaviors, Experiential modalities to assist youth in developing empathy, and Rational Emotive Behavioral Therapy (REBT) which assists youth in changing unwanted behaviors by identifying irrational beliefs, exploring consequences of such beliefs, challenging the irrational beliefs, and finally adapting a new and more effective way of thinking.

These behavioral and learning models utilize evidence-based, psycho-social, symbolic imagery, body awareness, mastery and control, skill building and practical problem solving modalities that have been shown to provide experiences that address the social/emotional needs of sexually abused children and youth and are based on the premise that sexual abuse victims' ability to thrive is enhanced when they receive a hands-on, experiential approach to intervention. Additionally, research on Resilience Theory shows that children who struggle with hardships as a result of sexual abuse are more resilient and do better when they have an adult mentor to assist them in developing caring, healthy relationships, making healthy life and career choices and attaining independence. Finally, research also shows that children are better able to thrive in when they have access to basic health, educational, recreational programs and activities.

#### **4. Target Population To Be Served**

The target population to be served through this project is sexually abused children, their siblings, and their families.

Specifically, CAH's Enhancements program serves sexually abused children and their eligible siblings (those who have either witnessed the sexual abuse or resided in the home

while abuse occurred), ages 6 months old through 18 years old living on the island of Oahu. Also included, are youth up to 21 years old who are in foster care and are still in High School. The Enhancements Program serves the same target population on the island of Kauai, but includes children and youth who have experienced all types of abuse. These children are referred for Enhancements support by nonprofit social service agencies and government agencies, such as Dept. of Human Services or the City Prosecutor's office, on Oahu and Kauai.

CAH's HEART and Ho`omaka programs serve sexually abused children, ages 9 years old to 18 years old. These children live in foster care settings or with a protective parent or primary caregiver. The Parent Strengthening program serves custodial parents and caregivers of sexually abused children.

Children and families come from all ethnic and socioeconomic backgrounds. Forty percent (40%) of children served are ethnically part-Hawaiian. Nearly seventy percent (70%) of children have family incomes that fall in the middle to lower income categories of the Federal poverty guidelines. The only requirement for services is that a child has been sexually abused and/or is a sibling of a sexual abuse victim living in the home, and/or is currently in foster care or other DHS placement.

#### **5. Geographic coverage:**

The Children's Alliance of Hawaii, Inc. serves the islands of Oahu (all programs) and Kauai (Enhancements only).

## **II. Service Summary and Outcomes**

### **1. Scope of Work, Tasks and Responsibilities & Project Annual Timeline**

The following service outcomes will be met through this proposal:

- a. 80% of participants in CAH's programs will report increased self esteem and self efficacy.
- b. 80% of participants in CAH's HEART and Ho`omaka programs will report increased knowledge about teen pregnancy and sexually transmitted infections prevention strategies.
- c. 60% of participants in CAH's Ho`omaka program will report success in establishing 3 or more life goals and implementing those goals.
- d. 90% of participants in CAH's Enhancement program will receive requested goods and services.

The following tasks will be completed during the project year:

<u>Time Period</u>	<u>Project Activity</u>
Quarter 1	a. Plan, coordinate and conduct four, 7-week social recreation activities (e.g. therapeutic horseback riding, Hawaiian cultural activities, community service projects, self defense classes, etc.)
	b. Conduct client assessments and develop appropriate service plans.
	c. Conduct structured reflection sessions with clients.
	d. Conduct a minimum of 6 one-hour individual sessions to set personal goals, assess progress and review service plans.
	e. Implement evidence-based curricula on goal setting as well as teen pregnancy and sexually transmitted infections prevention.
	f. Receive and process requests for enhancements goods and services.
	g. Prepare and submit required reports to contracting agency.
Quarter 2	a. Plan, coordinate and conduct four, 7-week social recreation activities (e.g. therapeutic horseback riding, Hawaiian cultural activities, community service projects, self defense classes, etc.)
	b. Conduct client assessments and develop appropriate service plans.
	c. Conduct structured reflection sessions with clients.
	d. Conduct a minimum of 6 one-hour individual sessions to set personal goals, assess progress and review service plans.
	e. Implement evidence-based curricula on goal setting as well as teen pregnancy and sexually transmitted infections prevention.
	f. Receive and process requests for enhancements goods and services.
	g. Administer evaluation tools to monitor program impact on clients.
	h. Prepare and submit required reports to contracting agency.
Quarter 3	a. Plan, coordinate and conduct four, 7-week social recreation activities (e.g. therapeutic horseback riding, Hawaiian cultural activities, community service projects, self defense classes, etc.)
	b. Conduct client assessments and develop appropriate service plans.
	c. Conduct structured reflection sessions with clients.
	d. Conduct a minimum of 6 one-hour individual sessions to set personal goals, assess progress and review service plans.

<u>Time Period</u>	<u>Project Activity</u>
	e. Receive and process requests for enhancements goods and services.
	f. Prepare and submit required reports to contracting agency.
Quarter 4	a. Plan, coordinate and conduct four, 7-week social recreation activities (e.g. therapeutic horseback riding, Hawaiian cultural activities, community service projects, self defense classes, etc.)
	b. Conduct client assessments and develop appropriate service plans.
	c. Conduct structured reflection sessions with clients.
	d. Conduct a minimum of 6 one-hour individual sessions to set personal goals, assess progress and review service plans.
	e. Implement evidence-based curricula on goal setting as well as teen pregnancy and sexually transmitted infections prevention.
	f. Receive and process requests for enhancements goods and services.
	g. Administer evaluation tools to monitor program impact on clients.
	h. Prepare and submit required final reports to contracting agency.

### 3. Quality Assurance and Evaluation

Each child, family and/or group receiving services will complete a thorough intake and assessment process, as well as develop individual service plans to include goals and objectives. Individual, family and group charts will be maintained and kept current by staff providing services. Client chart review is a regular part of bi-weekly supervision. It is used to maintain compliance to agency and best practices standards, to ensure program goals and objectives are being met, and to contribute to the development of staff skills and professionalism. Intake form will collect individual and family demographic data, as well as a sexual behavior checklist to identify *at risk* youth. Pertinent family history and resource information will be gathered to identify those individuals and families most in need of services such as assistance with transportation, and to identify any potential blockages to full participation in program services.

Assessments will be completed by individual workers under the supervision of the Director of Programs, with regular individual and group supervision and case review. As a result of a comprehensive assessment, a thorough and relevant service plan will

be developed to meet the individual, family and group goals and objectives. As with the assessment process, service plans will be reviewed and adjusted on a regular basis to meet changing needs, issues and developments which naturally occur with children and families. On a quarterly basis, client charts will be reviewed for compliance in accordance with case management standards.

#### **4. Measures of Effectiveness**

The following instruments will be used at the start (to set a base-line), middle (to gauge areas in need of adjustment), and post program (to evaluate effectiveness and changes in behavior, attitudes and skills).

##### **GSE – The General Self-Efficacy Scale**

This is a revised and adapted GSE from Matthias Jerusalem & Ralf Schwazer GSE. The scale is designed for adolescent population and can be self-administered or proctored (verbally given). It has a final composite score of 40 and does not require recoding. It is suitable as an indicator of quality of life at any point in time (indicated by raise or fall in composite score). Because the original measure did not tap specific behavior change, it has been adapted for CAH to cover particular benchmarks for our population served (navigating health, relationships and behaviors), and is meant to be a general measure of those benchmarks. The instrument will be used as a pre, middle and post evaluative tool to gauge general movement in self efficacy, and to assist program development and adjustment on a quarterly basis to ensure progress.

##### **RSE - Rosenberg Self Esteem Scale**

This is a self-report survey with scores ranging from 0-30. Scoring 20 or above indicates a high level of self esteem. Scoring 10-20 indicates normal levels of self esteem, and 10 or below indicates low self esteem. While designed as a Guttman scale, the RSE is now scored as a Likert scale. The scale includes 10 items scored from strongly agree to strongly disagree. The original sample for which the scale was developed consisted of 5,024 high school juniors and seniors from 10 randomly selected schools. The RSE is has high reliability and validity. The instrument will be used as a pre, middle and post evaluative tool to gauge general movement in self-esteem, and to assist program development and adjustment on a quarterly basis to ensure progress. (Rosenberg, Morris. 1989. *Society and The Adolescent Self-Image*. Revised edition. Middletown, CT: Wesleyan University Press)

##### **(ABTSB) Attitudes and Beliefs on Teen Sexuality & Pregnancy**

Designed by Children's Alliance of Hawaii, this pre-post testing instrument includes 20 questions developed to measure sexual attitudes and practices of teens in the area of pregnancy prevention as well as knowledge of STD issues and the deterrence of transmission. The instrument will be used as a pre,



middle and post evaluative tool to gauge general movement in knowledge and attitudes about sex and sexuality, and to assist program development and adjustment on a quarterly basis to ensure progress.

**(SBCPM) Sexual Behavioral Change Performance Measure**

This is a Pre-post program performance measure designed to measure changes in behavior, attitudes and knowledge about teenage sexuality, pregnancy and STD prevention. It was adapted from the RFP # HMS 903-10-06-S dated June 17, 2010, and will be included in the initial and final sessions of the program and be reported in the final performance report of the grant. It was developed to use in connection to the (above) quarterly measures and show effectiveness of program adjustments .

**III. Financial**

**1. Budget**

See attached budget forms.

**2. Anticipated quarterly funding requests for the fiscal year 2011-2012.**

Quarter 1	Quarter 2	Quarter 3	Quarter 4	Total Grant
\$37,500	\$37,500	\$37,500	\$37,500	\$150,000

**3. Other Funding Sources for FY 2011-2012**

Private Foundations:

- Hawaii Community Foundation, Geist Foundation
- Bank of Hawaii, Theresa Hughes Trust
- Atherton Family Foundation
- Friends of Hawaii Charities/Sony Open
- NFL Charities
- Hawaii Community Foundation
- Macy's Foundation
- National foundations

Individual/Corporate Donors

Office of Hawaiian Affairs

Federal Program Grants

## IV. Experience and Capability

### A. Necessary Skills and Experience

The Children's Alliance of Hawaii, Inc. has provided supportive programs for sexually abused children, youth and their families for over 23 years. CAH has an extensive volunteer program and strong community partnership network which include nonprofit organizations, such as Hale Opio, YWCA of Kauai, Catholic Charities of Hawaii, Child and Family Service, as well as government entities, such as the City Prosecutor's Office, Dept. of Human Services, The Judiciary, University of Hawaii, and Hawaii Pacific University. Community volunteers include public and private schools, corporations and small businesses, Rotary Clubs and other community organizations. These volunteers and partners enable us to provide necessary services and programs for sexually abused children on Oahu and Kauai.

The program staff is headed by CAH's Director of Programs, Joseph R. Bloom, LSW, QCSW, with over 16 years of experience in clinical therapy and counseling with sexually abused children and domestic violence and 9 years as adjunct faculty at the University of Hawaii, School of Social Work. Credentials of the CAH Program Managers include one staff with a Masters of Social Work and another with a Masters of Marriage and Family Therapy. Both have 3 years of practical experience working directly with sexually abused children and youth. CAH's Enhancements Coordinator has 3 years experience in facilitating and fulfilling requests for goods and services from public and private agencies on Oahu and Kauai. The program staff is assisted by three (3) graduate student level interns in Social Work and Marriage and Family Therapy under the close supervision of program staff.

The CAH President/Executive Director has over 30 years of nonprofit management and legislative/government contract management experience at CAH and other nonprofit organizations. The CAH Board of Directors Program Committee works directly with staff to ensure that the highest standards are maintained. This Committee includes a licensed pediatrician and child psychiatrist with 13 years in active medical practice and a director of a large nonprofit educational organization with over 15 years in managing federal and state contracts.

The following is a list of contracts, both private and public, which support CAH's skills and experience pertinent to this request:

Dept. of Health – CAMHD, HEART Program Contract #06-032  
Dept. of Health – CAMHD, Ho'omaka Program Contract #08-017  
Hawaii State Legislature – The Judiciary, Grant in Aid, J08127

Hawaii State Legislature – The Judiciary, Grant in Aid, J09039  
Hawaii Community Foundation, Geist Foundation, PIN Grant/Enhancements:  
2008, 2009, 2010, 2011  
Bank of Hawaii, Theresa Hughes Trust, PIN Grant/Enhancements: 2008, 2009,  
2010, 2011

**B. Facilities**

Our offices (6,816 sq. ft.) are located on the 4<sup>th</sup> floor of the Castle & Cooke Community Service Center on N. Vineyard Blvd. The building and our offices meet ADA compliance standards. Our program services are primarily conducted in our office premises or at community sites on Oahu.

**V. Personnel: Project Organization and Staffing**

**A. Proposed Staffing, Staff Qualifications, Supervision and Training**

See Section IV-A above.

**B. Organization Chart**

See Attachment A.

**VI. Other**

**A. Litigation**

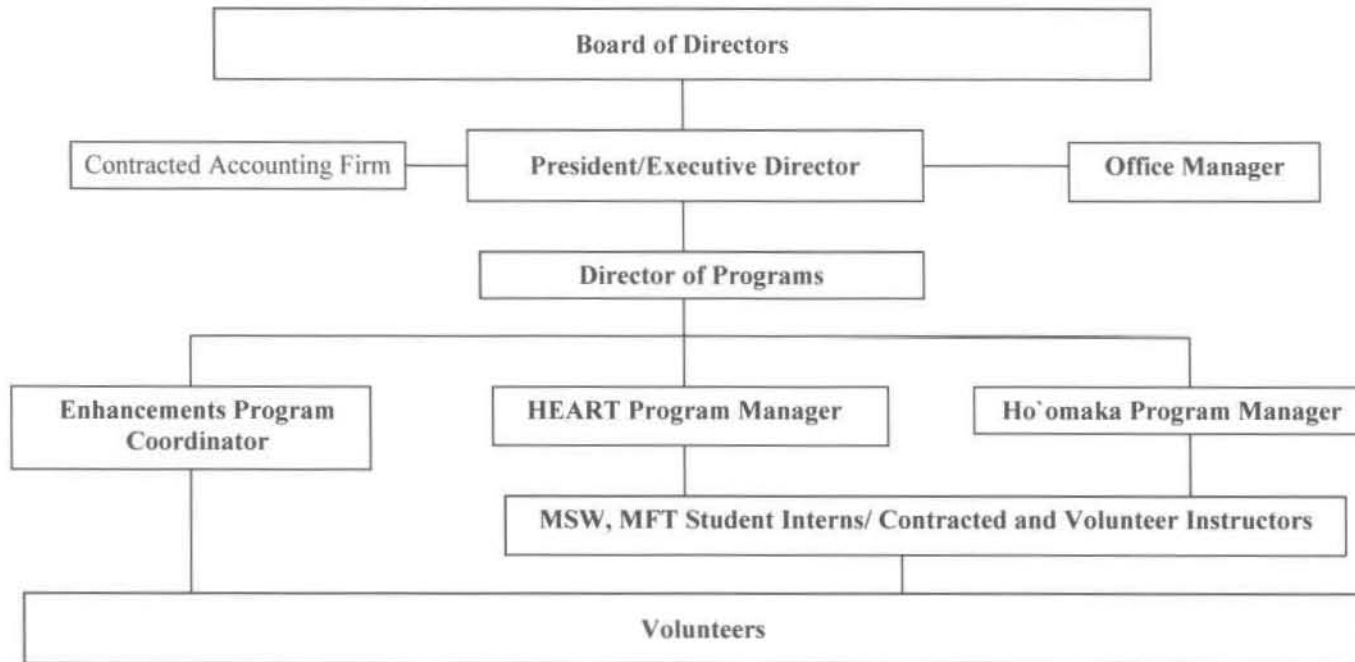
No pending litigation.

**B. Licensure or Accreditation**

Not applicable.

**ATTACHMENT A**

**The Children's Alliance of Hawaii, Inc.  
Organization Chart**



**BUDGET REQUEST BY SOURCE OF FUNDS**  
(Period: July 1, 2011 to June 30, 2012)

Applicant: The Children's Alliance of Hawaii, Inc.

<b>BUDGET CATEGORIES</b>	<b>Total State Funds Requested (a)</b>	<b>Other Funds (b)</b>	<b>(c)</b>	<b>(d)</b>
<b>A. PERSONNEL COST</b>				
1. Salaries	100,276	149,209		
2. Payroll Taxes & Assessments	12,875	19,195		
3. Fringe Benefits	11,000	16,445		
<b>TOTAL PERSONNEL COST</b>	<b>124,151</b>	<b>184,849</b>		
<b>B. OTHER CURRENT EXPENSES</b>				
1. Airfare, Inter-Island				
2. Insurance	730	3,830		
3. Lease/Rental of Equipment	640	3,360		
4. Lease/Rental of Space	7,600	39,700		
5. Staff Training		1,500		
6. Supplies	10,929	16,000		
7. Telecommunication	750	3,950		
8. Utilities				
9. Accounting/Audit Services	4,800	25,200		
10. Postage	100	500		
11. Printing	300	700		
12				
13				
14				
15				
16				
17				
18				
19				
20				
<b>TOTAL OTHER CURRENT EXPENSES</b>	<b>25,849</b>	<b>94,740</b>		
<b>C. EQUIPMENT PURCHASES</b>				
<b>D. MOTOR VEHICLE PURCHASES</b>				
<b>E. CAPITAL</b>				
<b>TOTAL (A+B+C+D+E)</b>	<b>150,000</b>	<b>279,589</b>		
<b>SOURCES OF FUNDING</b>		Budget Prepared By:		
(a) Total State Funds Requested	150,000	Joan I. Naguwa 599-2955 x215		
(b) Trusts & Foundations	150,000	[REDACTED]		
(3) Individual/Corporate Contributions	129,865	[REDACTED]		
(d)		[REDACTED]		
<b>TOTAL BUDGET</b>	<b>429,865</b>	Joan I. Naguwa, President/Executive Director Name and Title (Please type or print)		

## BUDGET JUSTIFICATION PERSONNEL - SALARIES AND WAGES

Applicant: The Children's Alliance of Hawaii, Inc.

Period: July 1, 2011 to June 30, 2012

POSITION TITLE	FULL TIME EQUIVALENT	ANNUAL SALARY A	% OF TIME ALLOCATED TO GRANT REQUEST B	TOTAL STATE FUNDS REQUESTED (A x B)
President/Executive Director	1	\$80,000.00	1.00%	\$ 800.00
Director of Programs	1	\$65,000.00	10.00%	\$ 6,500.00
Enhancements Coordinator	1	\$45,760.00	60.00%	\$ 27,456.00
HEART Program Manager	0.8	\$41,600.00	70.00%	\$ 29,120.00
Ho`omaka Program Manager	1	\$52,000.00	70.00%	\$ 36,400.00
				\$ -
				\$ -
				\$ -
				\$ -
				\$ -
				\$ -
				\$ -
				\$ -
				\$ -
				\$ -
<b>TOTAL:</b>				<b>100,276.00</b>
<b>JUSTIFICATION/COMMENTS:</b> These positions are critical to the successful implementation of the proposed project.				

## BUDGET JUSTIFICATION - EQUIPMENT AND MOTOR VEHICLES

Applicant: The Children's Alliance of Hawaii, Inc.      Period: July 1, 2011 to June 30, 2012

DESCRIPTION EQUIPMENT	NO. OF ITEMS	COST PER ITEM	TOTAL COST	TOTAL BUDGETED
			\$ -	
			\$ -	
			\$ -	
			\$ -	
			\$ -	
TOTAL:				
JUSTIFICATION/COMMENTS:				

DESCRIPTION OF MOTOR VEHICLE	NO. OF VEHICLES	COST PER VEHICLE	TOTAL COST	TOTAL BUDGETED
			\$ -	
			\$ -	
			\$ -	
			\$ -	
			\$ -	
TOTAL:				
JUSTIFICATION/COMMENTS:				

## BUDGET JUSTIFICATION CAPITAL PROJECT DETAILS

Applicant: The Children's Alliance of Hawaii,

Period: July 1, 2011 to June 30, 2012

FUNDING AMOUNT REQUESTED						
TOTAL PROJECT COST	ALL SOURCES OF FUNDS RECEIVED IN PRIOR YEARS		STATE FUNDS REQUESTED	OF FUNDS	FUNDING REQUIRED IN SUCCEEDING YEARS	
	FY: 2009-2010	FY: 2010-2011	FY:2011-2012	FY:2011-2012	FY:2012-2013	FY:2013-2014
PLANS						
LAND ACQUISITION						
DESIGN						
CONSTRUCTION						
EQUIPMENT						
<b>TOTAL:</b>						
JUSTIFICATION/COMMENTS:						



**DECLARATION STATEMENT  
APPLICANTS FOR GRANTS AND SUBSIDIES  
CHAPTER 42F, HAWAII REVISIED STATUTES**

The undersigned authorized representative of the applicant acknowledges that said applicant meets and will comply with all of the following standards for the award of grants and subsidies pursuant to section 42F-103, Hawai'i Revised Statutes:

- (1) Is licensed or accredited, in accordance with federal, state, or county statutes, rules, or ordinances, to conduct the activities or provide the services for which a grant or subsidy is awarded;
- (2) Comply with all applicable federal and state laws prohibiting discrimination against any person on the basis of race, color, national origin, religion, creed, sex, age, sexual orientation, or disability;
- (3) Agree not to use state funds for entertainment or lobbying activities; and
- (4) Allow the state agency to which funds for the grant or subsidy were appropriated for expenditure, legislative committees and their staff, and the auditor full access to their records, reports, files, and other related documents and information for purposes of monitoring, measuring the effectiveness, and ensuring the proper expenditure of the grant or subsidy.

In addition, a grant or subsidy may be made to an organization only if the organization:

- (1) Is incorporated under the laws of the State; and
- (2) Has bylaws or policies that describe the manner in which the activities or services for which a grant or subsidy is awarded shall be conducted or provided.

Further, a grant or subsidy may be awarded to a non-profit organization only if the organization:

- (1) Has been determined and designated to be a non-profit organization by the Internal Revenue Service; and
- (2) Has a governing board whose members have no material conflict of interest and serve without compensation.

For a grant or subsidy used for the acquisition of land, when the organization discontinues the activities or services on the land acquired for which the grant or subsidy was awarded and disposes of the land in fee simple or by lease, the organization shall negotiate with the expending agency for a lump sum or installment repayment to the State of the amount of the grant or subsidy used for the acquisition of the land.

Further, the undersigned authorized representative certifies that this statement is true and correct to the best of the applicant's knowledge.

The Children's Alliance of Hawaii, Inc. \_\_\_\_\_  
(Organization)

01/28/11  
(Date)

Joan I. Naguwa,  
(Typed Name)

President/Executive Director  
(Title)