

House District 42nd

Senate District 20th

THE TWENTY-SIXTH LEGISLATURE
HAWAII STATE LEGISLATURE
APPLICATION FOR GRANTS & SUBSIDIES
CHAPTER 42F, HAWAII REVISED STATUTES

Log No: 97-C

For Legislature's Use Only

Rec'd JAN 28 2011

Type of Grant or Subsidy Request:

GRANT REQUEST - OPERATING

GRANT REQUEST - CAPITAL

SUBSIDY REQUEST

"Grant" means an award of state funds by the legislature, by an appropriation to a specified recipient, to support the activities of the recipient and permit the community to benefit from those activities.

"Subsidy" means an award of state funds by the legislature, by an appropriation to a recipient specified in the appropriation, to reduce the costs incurred by the organization or individual in providing a service available to some or all members of the public.

"Recipient" means any organization or person receiving a grant or subsidy.

STATE DEPARTMENT OR AGENCY RELATED TO THIS REQUEST (LEAVE BLANK IF UNKNOWN):

STATE PROGRAM I.D. NO. (LEAVE BLANK IF UNKNOWN):

1. APPLICANT INFORMATION:

Legal Name of Requesting Organization or Individual:
Sutter Health Pacific

Db: Kāhi Mōhala

Street Address: 91-2301 Old Fort Weaver Road, Ewa Beach, HI 96706

Mailing Address: : same

2. CONTACT PERSON FOR MATTERS INVOLVING THIS APPLICATION:

Name Leonard Ličina

Title Chief Executive Officer

Phone # 677-2503

Fax # 677-2570

e-mail licinal@kahi.org

3. TYPE OF BUSINESS ENTITY:

- NON PROFIT CORPORATION
- FOR PROFIT CORPORATION
- LIMITED LIABILITY COMPANY
- SOLE PROPRIETORSHIP/INDIVIDUAL

6. DESCRIPTIVE TITLE OF APPLICANT'S REQUEST:

Renovation of existing *Lokelani* inpatient unit on campus for our acute and continuing treatment inpatient population.

4. FEDERAL TAX ID #:

5. STATE TAX ID #: W

7. AMOUNT OF STATE FUNDS REQUESTED:

FY 2011-2012: \$200,000

8. STATUS OF SERVICE DESCRIBED IN THIS REQUEST:

- NEW SERVICE (PRESENTLY DOES NOT EXIST)
- EXISTING SERVICE (PRESENTLY IN OPERATION)

SPECIFY THE AMOUNT BY SOURCES OF FUNDS AVAILABLE AT THE TIME OF THIS REQUEST:

STATE \$

FEDERAL \$

COUNTY \$

PRIVATE/OTHER \$113,000

TYPE NAME & TITLE OF AUTHORIZED REPRESENTATIVE

Leonard Ličina, Chief Executive Officer

1-29-11

AUTHORIZED SIGNATURE

NAME & TITLE

DATE SIGNED

Application for Grants and Subsidies

If any item is not applicable to the request, the applicant should enter "not applicable".

I. Background and Summary

This section shall clearly and concisely summarize and highlight the contents of the request in such a way as to provide the State Legislature with a broad understanding of the request. Include the following:

1. A brief description of the applicant's background

Established in 1983, Kāhi Mōhala's campus style 88-bed facility remains Hawai'i's only freestanding, **not-for-profit** psychiatric hospital. Located in a park-like setting in Ewa Beach, the buildings and grounds offer a complete therapeutic environment with an emphasis on patient safety and security. For the past 27 years, Kāhi Mōhala has provided the residents of Hawai'i and referrals from around the Pacific Rim, with quality behavioral health care. If it were not for the presence of Kāhi Mōhala, children, adolescents and adults with mental health challenges would not receive the specialized health care they need in their own community.

Kāhi Mōhala provides therapeutic inpatient programs for children, adolescents and adults who are in need of acute care, as well as for those who require case management for a longer period of time. Annually the hospital serves approximately 1,500 patients from O'ahu and those referred from the Neighbor Islands, including Maui County, Kaua'i and the Big Island, where behavioral health care services are practically non-existent.

Kāhi Mōhala is dedicated to caring for people in need by providing innovative, quality and effective behavioral health services. The heart of Kāhi Mōhala's philosophy of care is to improve the overall quality of life for our patients. Comprehensive treatment programs incorporate cognitive-behavioral techniques that include individual, group and family-centered approaches to therapy. Ultimately, this will mean greater accessibility to enhanced behavioral health care services in our community.

2. The goals and objectives related to the request

Kāhi Mōhala Behavioral Health seeks the Legislature's commitment to improving our hospital's vital services for children, adolescents, and adults with a one-year Grant-in-Aid Request for \$200,000. This critical funding will ensure that the hospital can renovate inpatient facilities at *Lokelani*, our residential 32-bed acute care unit.

Kāhi Mōhala has an outstanding comprehensive therapeutic inpatient care program specifically for children (ages 3-12) and teens (ages 13-17) who receive acute treatment at the hospital and when necessary, for an extended period of time. Kāhi Mōhala staff work closely with youthful patients and their families to support personal growth and behavioral change so that individuals can reach their full potential and successfully integrate into home and school.

The inpatient and partial hospitalization program (PHP) strives to teach children and adolescents developmental skills for containing anxiety and coping with adversity. As part of the therapeutic process, patients receive nurturing group experiences to promote their personal growth. Our goal is to find the least restrictive environment for our patients, where they can grow, learn, thrive and contribute to society to the best of their ability, independent of institutionalized constraints.

However, successful experiential therapy for our patients is dependent upon access to an environment safe enough to precipitate behavioral change.

The environmental quality of the physical operating plant is inextricably linked to the ability to provide quality health care services for our patients. Over the past several years the hospital buildings and units have fallen into significant disrepair, despite routine maintenance. As a not-for-profit organization, there are not sufficient resources for renovations to the inpatient units and other campus programming areas. Kāhi Mōhala has invested most of its limited capital in roofing, flooring and security doors in common areas that directly address the most basic safety and security issues.

Without well- maintained treatment facilities on campus, which comply with state and national hospital accreditation standards, the hospital could be unable to deliver the level of care for our patients, consistent with our program service goals.

The *Lokelani* capital renovation project will significantly improve the safety, efficiency and environmental quality of this busy treatment unit on campus for our adolescent acute care, adult acute, continuing inpatient and PHP populations. The renovation will enhance treatment options for our inpatients and alleviate concerns about patient security and privacy. The long term project goal is an improved therapeutic environment at the hospital that increases the options for recovery, empowers young mentally ill patients to self-manage their lives, and decreases the need for costly chronic institutionalization.

3. State the public purpose and need to be served

Kāhi Mōhala plays a critical role in the statewide safety net by caring for patients when they become so dangerous to themselves and threatening to others that acute care is required.

Kāhi Mōhala provides effective behavioral health care to stabilize patients and graduate them to transitional programs that support mainstream independent living in the community.

In the process, Kāhi Mōhala's health care services and programs save taxpayers hundreds of thousands of dollars in lessening the need for chronic institutionalization.

Kāhi Mōhala has a proud history of working with the State Department of Health (DOH) to ensure that the state has the capacity to serve its most seriously mentally ill patients. Kāhi Mōhala has been instrumental in providing alternative placement in a safe facility with effective and innovative behavioral health care programming.

Kāhi Mōhala currently has a contract with the State Department of Health Adult Mental Health Division (AMHD), which helps alleviate overcrowding at the Hawai'i State Hospital in Kaneohe, and other facilities on other islands. Our hospital also collaborates with the Child and Adolescent Mental Health Division (CAMHD) programs to provide cost efficient services for acute, residential, and partial care patients.

Statistically, nearly one in ten adults experiences some type of mental illness. It is estimated that more than 20 percent of those under the age of 18 nationally suffer from mental health issues, with even greater prevalence in Hawai'i due to methamphetamine co-morbidity.

Adolescents who have emotional or mental health problems, such as depression, are at increased health risk because even casual use of potent substances such as heroin, cocaine or methamphetamine can cause severe medical problems including overdose or brain damage. Mental illness compounded by substance abuse can increase risk-taking behaviors with serious consequences. Alcohol and drug abuse is a leading cause of teen death or injury related to car accidents, suicides, and other forms of violence. Adolescent substance abuse can also have a negative impact on self-esteem, relationship skills, physical and emotional independence, or even the ability to hold a job.

The recent State Department of Health survey confirms that compared with students nationally, Hawai'i's youth are at greater risk for suicide. Suicides are the leading cause of all injury deaths in Hawai'i, with an average of 120 a year from 2003 to 2007. Of these, 75% had a history of mental illness.

The impact of mental health disorders on the community and the workforce is significant:

- ◆ Major depression is equivalent to the burden of blindness or paraplegia and ranks second only to ischemic heart disease in the magnitude of disease burden.
- ◆ The burden of mental illness on our society is second only to cardiovascular conditions in terms of Disability Adjusted Life Years.

(DALYs are calculated the years of life lost to premature death and years lived with a disability).

- ◆ Psychosis is equivalent to the burden of quadriplegia.
- ◆ The combined indirect and direct costs of mental illness, including costs of lost productivity, lost earnings due to illness and social costs are estimated to total at least \$113 billion annually.
- ◆ Clinical depression alone costs the U.S. \$43.7 billion annually, including workplace costs for absenteeism and lost productivity (\$23.8 billion), direct costs for treatment and rehabilitation (\$12.4 billion), and lost earning due to depression-induced suicides (\$7.5 billion).
- ◆ Healthcare costs of untreated persons who suffer from alcoholic and drug addiction are 100 percent higher than those who receive treatment.

Our therapeutic staff is painstaking in their efforts to support our patient population in taking responsibility for behavioral health issues that require active management on their part instead of full dependence on others. Treatment at Kāhi Mōhala is predicated on the concept of “recovery” from mental illness. By teaching our patients skills to become adept in examining how their personal choices affect their quality of life, and in learning to minimize the effects of self-defeating behaviors such as substance abuse, hospital patients learn to improve the quality of their own lives.

Community Benefits

Kāhi Mōhala provides community benefit services for the poor and underserved including health care services for persons who cannot afford health care because of inadequate resources and who are uninsured or underinsured. The cost of caring for the needy comes from the hospital’s operating budget, because it bears the unpaid costs of the gaps in reimbursement of public health care programs by treating Medicaid, QUEST, QeXA, and Medicare beneficiaries. These beneficiaries include indigent and homeless patients who are typically referred to the hospital from emergency rooms around O‘ahu, rather than through physician referrals. Collaborations with referral sources are vital to our ability to serve this population.

At Kāhi Mōhala, treatment programs are responsive to compelling needs in the community and our door is always open to everyone, regardless of race, religion or socio-economic status.

Benefits for the broader community include unpaid costs of providing the following direct and indirect health care services: treating the elderly, health screenings and other health-related services, training health professionals, educating the community with various seminars and classes, the cost of performing medical research and the costs associated with providing free clinics and community services.

Also included are contributions Kāhi Mōhala makes to community agencies by providing meeting space and support for charitable activities.

In the Hawaiian Islands, the demand for quality inpatient services for seriously mental ill and dually diagnosed forensically involved inpatients continues to grow.

The Hawai'i State Hospital has made tremendous gains in the past few years in providing individualized programming so that patients can "graduate" from institutionalized care to community-based services. Nonetheless, the numbers of patients continues to overwhelm mental health bed availability in the community, creating a backlog of patients who cannot access the appropriate hospital-based services and often wind up homeless or languishing in correctional institutions. As a result, forensic patients are not getting the treatment and rehabilitation necessary for release from the state hospital. Both lawmakers and mental-health workers have questioned whether the community had adequate facilities and services to meet the needs of the state hospital's patients.

Over the years Kāhi Mōhala has accepted many patients from Hawai'i State Hospital. Where concern over providing adequate levels of support for those who leave the state hospital is an issue, Kāhi Mōhala is uniquely suited to match appropriate services with the patient in a therapeutic care setting. Where payment for care is an issue, Medicare coverage is available and most of the state's Quest health care program patients would be eligible.

Quantifiable Community Benefits

As an affiliate of the Sutter Health system, Kāhi Mōhala is connected to one of the nation's leading not-for-profit systems of community-based health care networks. We are dedicated to the not-for-profit model of health care and believe it represents the best approach for assisting the people we serve.

Health care insurance providers compute reimbursement in health care cost based on actual cost to provide hospital services in relation the level of reimbursement of charges. It also includes the cost of other services for indigent populations, and cash donations on behalf of the poor and needy.

We believe in partnerships within the local community, unlike investor-owned, health systems that have a financial disincentive to avoid caring for uninsured and underinsured clients, and hard-to-serve populations including "undesirable" geographic areas.

We share our expertise and resources to advance quality of care. Our local volunteer board members are actively involved in the community to help provide us with the best guidance to meet changing needs of the communities we serve.

In 2009, Kāhi Mōhala provided \$717,000 in total quantifiable community benefits for the poor, underserved, including homeless patients, and to the broader community. In 2010, we anticipate writing off \$894,000 to Charity Care. Over the past five years, that total equates to \$3,584,000 in quantifiable community benefits.

Total Quantifiable Community Benefits provided by Kāhi Mōhala (in thousands) are as follows:

FY 05	\$560K
FY 06	\$402K
FY 07	\$1149K
FY 08	\$756K
<u>FY 09</u>	<u>\$717K</u>
Five year Total \$3.584M (average \$717K annually)	

4. Describe the target population to be served

Kāhi Mōhala provides specialized care and behavioral health treatment for children (ages 3-12), adolescents (ages 13-17), and adults (18+) with psychiatric disorders, including those with co-occurring substance abuse.

Funding from this Grant-in-Aid will renovate campus facilities that serve approximately 1,500 behavioral health patients each year. Of those, about 300 are children and adolescents who are referred to the hospital on an inpatient and partial hospitalization basis. The *Lokelani* building is designed as a 32 bed unit and serves a patient population that is flexible to the changing needs of the community.

Although the majority of our patients suffer from depression or bipolar disorder, we also treat patients for anxiety, suicidal episodes, psychotic disorders, eating disorders, Post Traumatic Stress Disorder (PTSD), Attention Deficit Hyperactivity Disorder (ADD/ADHD) and dual diagnosis mental disorders. These patients frequently exhibit multiple needs that impair family relations, education and social functioning to such a degree that they cannot be effectively treated at a lower level of care.

During treatment, children and adolescents remain connected to their families. Family therapy is an essential component of inpatient treatment, and every effort is made to facilitate this for both O‘ahu and Neighbor Island families. The program provides quality behavioral therapies and transition planning to ensure seamless re-integration back to the community, in the least restrictive setting at the earliest opportunity, for home and school success.

5. Describe the geographic coverage

For the past 27 years, Kāhi Mōhala has served the residents of Hawai‘i, and referrals from around the Pacific Rim, with quality behavioral healthcare. Our highly skilled behavioral health practitioners work closely with the courts and other mental health caregivers. Cooperative referrals insure that residents of the Neighbor Islands are effectively treated and presented with the option of returning home as quickly as possible.

If it were not for the presence of Kāhi Mōhala in West O‘ahu, many children, adolescents and adults with behavioral health disorders would not receive the specialized health care they need in their own community. It is very likely that patients would be required to seek health care services at a distant location on the mainland, or be inappropriately incarcerated in the public safety or juvenile justice systems.

The geographic distribution of our patients closely matches the demographics of the general population of the state.

II. Service Summary and Outcomes

1. Describe the scope of work, tasks and responsibilities;

The scope of work to the *Lokelani* building includes extensive renovations in the common areas, which are in constant use 24/7 by patients and staff, the 16 patient bedrooms, and three shared patient bathrooms.

The initial *Lokelani* renovations began in 2007, and Phase II of the project was completed in 2010. The Phase III renovations have been grouped and prioritized to assure timely response to any regulatory compliance recommendations and patient safety related renovations first.

The facilities management staff at Kāhi Mōhala has identified the following scope of work for *Lokelani* Phase III:

Common areas

Day Area custom built-in cabinets and flooring

Unit Kitchen (cabinets, doors, flooring, lighting)

Creation of outside recreation and therapy area with security fencing and gate

Unit Entry Lobby (custom cabinets, flooring)

Ohana Room upgrades (2 rooms - flooring, furnishings)

Patient bedrooms/bathrooms

Bathroom Renovations (3)

Patient Room upgrades (16 rooms - flooring, beds, desk/wall units, windows, fixtures, paint, safety lighting)

All of the renovation work will be supervised by Kāhi Mōhala facilities management staff and subcontracted to local vendors for specific project areas. By lining up project vendors, sub-contractors and cost estimates well in advance, and by creating a timeline for project benchmarks and completion dates, the project manager will be able to accomplish the most vital repairs and maximize economies of scale with the least disruption to the patients.

2. Projected annual timeline for accomplishing the results or outcomes of the service

The common area and patient bedroom/bathroom renovations can likely be accomplished within a one-year time frame from the date initial funding is received, provided that all funding requests are approved and received in a timely manner.

Estimated project bidding and purchasing: September – December 2011.
 Project construction and completion: January – July 2012.

3. Quality assurance and evaluation plans for the request

The Board of Trustees of Kāhi Mōhala Behavioral Health is ultimately responsible for quality assurance and evaluation. In addition, the facilities manager for the hospital will oversee all aspects of the renovation projects with periodic review in consultation with the CEO and the administrative leadership team.

Project plans with timelines and designated responsible individuals will be developed, monitored and evaluated by the CEO and the administrative leadership team on a monthly basis, with corrective actions as needed to ensure compliance.

4. Measure(s) of effectiveness

This project’s effectiveness will be measured for timeliness, cost effectiveness and quality of renovation work.

III. Financial

Budget

1. The applicant shall submit a budget utilizing the enclosed budget forms as applicable, to detail the cost of the request.

The estimated cost of the Phase III *Lokelani* A and B unit renovations is \$313,000. Additional fundraising will continue in 2011 and until the entire \$313,000 Phase III budget funds are secured.

Please see Attachment A for the detailed cost of this \$200,000 request (4 budget pages).

2. The applicant shall provide its anticipated quarterly funding requests for the fiscal year 2010-2011.

Quarter 1	Quarter 2	Quarter 3	Quarter 4	Total Grant
\$0	\$100,000	\$100,000	\$0	\$200,000

3. The applicant shall provide a listing of all other sources of funding that they are trying to obtain for fiscal year 2011-2012.

Please see Attachment B for the listing of all other potential funding sources for fiscal year 2011-2012 for this project.

IV. Experience and Capability

A. Necessary Skills and Experience

For more than a generation, Kāhi Mōhala Behavioral Health has provided specialized care and treatment for children, adolescents and adults statewide. Kāhi Mōhala is a certified Medicare provider and certified by Tricare for child and adolescent residential treatment and partial hospitalization.

Kāhi Mōhala is the first hospital-based center for psychiatry in Hawai'i to provide services for the military in the Pacific Rim. In addition, Kāhi Mōhala is fully accredited by The Joint Commission (formerly JCAHO, the Joint Commission on Accreditation of Healthcare Organizations), certified by the Center for Medicare Services (CMS), and licensed by the State of Hawai'i.

Kāhi Mōhala is the only freestanding, not-for-profit psychiatry hospital in Hawai'i specializing exclusively in behavioral health care. Kāhi Mōhala specializes in comprehensive treatment programs for children (ages 3-12), adolescents (ages 13-17), and adults (age 18+) offering specialized treatment plans for:

- ◆ Depression, Bipolar and other Mood Disorders
- ◆ Eating Disorders
- ◆ Anxiety Disorders
- ◆ Suicidal Ideation
- ◆ Post Traumatic Stress Disorder (PTSD)
- ◆ Psychotic Disorders
- ◆ Substance-related Disorders
- ◆ Oppositional Defiant Disorders
- ◆ Attention Deficit Hyperactivity Disorder (ADD/ADHD)

Kāhi Mōhala's medical team of behavioral health care experts specializes in clinical assessments, psychological testing, individualized evaluation, substance abuse recovery, cognitive-behavioral therapies, individual, group and family-centered therapy programs, and psychiatric medical evaluation and management. Comprehensive treatment is available that may combine a range of options from supervised inpatient care and medical treatment to educational programs.

Once referred and deemed appropriate for hospital-based care, patients are placed on an acute or continuing inpatient unit based on acuity and risk of harm.

Patients requiring this level of care often have issues and persistent patterns of behavior that cannot be successfully treated in community-based outpatient programs or in partial hospitalization.

Related projects or contracts for the most recent three years that are pertinent to the request:

Within the past 3 years, more than \$1 million in capital improvements have been completed at Kāhi Mōhala under the supervision of the facilities management staff.

In 2008 Phase I renovations to the *Mokihana* acute adult inpatient care unit were completed with capital funding from the Legislature's \$150,000 CIP 07-113 appropriation. The project included construction of two secured nursing stations with built-in cabinets, new lighting, carpeting, electrical and IT wiring; window tinting behind the new nursing stations; new carpeting to the common day areas and hallways; and complete replacement of the window screen wall and framework between the patient units and the lanais.

In 2009, with a \$25,000 grant from the George N. Wilcox Trust, renovations to the *Lehua* adult unit upgraded the existing bathroom to ADA standards, a major improvement for patients with disabilities.

During 2009 and 2010, a completely new therapeutic ROPES Challenge Course was built on campus to replace the deteriorated original equipment. Kāhi Mōhala inaugurated ROPES in May 2010, after four years of planning, construction, and fundraising. This \$250,000 project is a long-term investment for both our patients and the community. Designed by a specialist in mental health adaptation of basic ROPES courses, it complements Kāhi Mōhala's traditional therapies via an outdoor therapy program that is completely unique to our hospital. It is also an opportunity for students, community organizations and business leaders to experience an innovative outdoor challenge that teaches teamwork and enhances life skills. A \$50,000 grant from the HMSA Foundation established the HMSA Foundation Challenge Course Community Access Fund to underwrite the fees for the ROPES experience for school children and youth groups.

In 2010, the City & County of Honolulu approved the release of \$547,816 in CDBG funds to Kāhi Mōhala for major renovations to the *Lehua* adult unit, which requires multiple upgrades to the aging building and the sanitary facilities. After a strict bidding protocol, we hired architectural firm Urban Works, which specializes in LEED green technology design, to assess the renovation needs and new construction scope for the unit. Medical, administrative, and facilities staff have been working diligently with the architects to provide feedback and prioritize the physical renovation requirements, with sensitivity to the needs of the patients. The renovation of the *Lehua* unit is scheduled for Spring 2011. An additional CDBG request of \$550,000 is in process to fund additional renovations to the *Lehua* unit not funded by the original request.

In December 2010, Phase II renovations for the *Lokelani* unit were completed. Numerous improvements have been made to the B side of the unit, starting with the front doors, entry lobby, day area and new medications room, to the new Nursing station, and on through to the service hallway, kitchen, and brand new laundry room. The renovations feature a high quality and updated design and have been specifically designed for patients experiencing acute mental trauma and the dedicated professionals who care for them. Upgraded materials, both in quality and function, were selected for their appearance, durability, low maintenance, and effectiveness for the special needs of this patient population. Among the new products installed were customized lockable built-in cabinets and drawers, Corian solid surface countertops, state of the art energy-saving appliances, and stain-resistant carpet and vinyl flooring. This successful fundraising effort began with a \$50,000 Sutter Health Matching Challenge Grant, which leveraged another \$150,000 in donations from the Trustees, hospital staff, community members, and foundations.

B. Facilities

Kāhi Mōhala is located on 14.5 acres in Ewa Beach consisting of five buildings and one modular building for a total of 64,000 square feet. Built in 1982, and opened in 1983, the facility has been in continuous use for 27 years providing inpatient and outpatient services for the people of Hawai‘i. The buildings and grounds offer a complete therapeutic environment with an emphasis on patient safety and security. The facilities have ADA access. Please see the attached campus map for facility layout.

V. Personnel: Project Organization and Staffing

A. Proposed Staffing, Staff Qualifications, Supervision and Training

The on-site facilities manager will oversee and assure quality of construction, code compliance, and Interim Life Safety Measures (ILSM) when applicable for the projected duration of these capital renovations to the *Lokelani* inpatient units on campus. Contractors will provide all necessary labor and personnel under the supervision of Kāhi Mōhala’s project manager. All workers on site will complete Kāhi Mōhala’s “Vendor Orientation Packet” prior to start of work. Contractors and vendors will be chosen based on professional qualifications, competencies and referrals, and will be subject to a competitive bidding process.

B. Organization Chart

Please see Attachment C.

VI. Other

A. Litigation

There is no litigation or any outstanding judgments against Kāhi Mōhala Behavioral Health.

B. Licensure or Accreditation

Kāhi Mōhala Behavioral Health operates 88 acute inpatient beds that are licensed by the State of Hawai‘i, Department of Health. Kāhi Mōhala is fully accredited by The Joint Commission (formerly the Joint Commission Accreditation of Healthcare Organizations – JCAHO) under two sets of standards: The Hospital Standards Manual and the Behavioral Health Care Manual. Kāhi Mōhala is the first hospital-based center for psychiatry in Hawai‘i to provide services for the military in the Pacific Rim. As such, Kāhi Mōhala is a certified provider by TriCare for inpatient, residential and partial hospitalization services.

In addition, Kāhi Mōhala is certified by the Center for Medicare and Medicaid Services (CMS) with fully certified child and adolescent inpatient treatment and partial hospitalization programs. Kāhi Mōhala is also a member in good standing of the Hawai‘i Association of Health Care (HAH) and the American Hospital Association (AHA).

**DECLARATION STATEMENT
APPLICANTS FOR GRANTS AND SUBSIDIES
CHAPTER 42F, HAWAII REVISIED STATUTES**

The undersigned authorized representative of the applicant acknowledges that said applicant meets and will comply with all of the following standards for the award of grants and subsidies pursuant to section 42F-103, Hawaii Revised Statutes:

- (1) Is licensed or accredited, in accordance with federal, state, or county statutes, rules, or ordinances, to conduct the activities or provide the services for which a grant or subsidy is awarded;
- (2) Comply with all applicable federal and state laws prohibiting discrimination against any person on the basis of race, color, national origin, religion, creed, sex, age, sexual orientation, or disability;
- (3) Agree not to use state funds for entertainment or lobbying activities; and
- (4) Allow the state agency to which funds for the grant or subsidy were appropriated for expenditure, legislative committees and their staff, and the auditor full access to their records, reports, files, and other related documents and information for purposes of monitoring, measuring the effectiveness, and ensuring the proper expenditure of the grant or subsidy.

In addition, a grant or subsidy may be made to an organization only if the organization:

- (1) Is incorporated under the laws of the State; and
- (2) Has bylaws or policies that describe the manner in which the activities or services for which a grant or subsidy is awarded shall be conducted or provided.

Further, a grant or subsidy may be awarded to a non-profit organization only if the organization:

- (1) Has been determined and designated to be a non-profit organization by the Internal Revenue Service; and
- (2) Has a governing board whose members have no material conflict of interest and serve without compensation.

For a grant or subsidy used for the acquisition of land, when the organization discontinues the activities or services on the land acquired for which the grant or subsidy was awarded and disposes of the land in fee simple or by lease, the organization shall negotiate with the expending agency for a lump sum or installment repayment to the State of the amount of the grant or subsidy used for the acquisition of the land.

Further, the undersigned authorized representative certifies that this statement is true and correct to the best of the applicant's knowledge.

Sutter Health Pacific dba: Kahi Māhala

(Signature)

(Date)

Leonard Ličina

Chief Executive Officer

ATTACHMENTS

- ATTACHMENT A – CAPITAL PROJECT BUDGET JUSTIFICATION (4 pages)
- ATTACHMENT B – ALL OTHER POTENTIAL FUNDING SOURCES LISTING FOR FY2011-2012.
- ATTACHMENT C – KĀHI MŌHALA ORGANIZATION CHART
- KĀHI MŌHALA BOARD OF DIRECTORS
- KĀHI MŌHALA SERVICES OVERVIEW
- IRS 501 (c)(3) NON-PROFIT DETERMINATION LETTER
- KĀHI MŌHALA CAMPUS MAP AND PHOTOGRAPHS

ATTACHMENT A

Sutter Health Pacific dba Kāhi Mōhala
Lokelani Renovation Project
Capital Project Budget Justification (4 pages)

BUDGET REQUEST BY SOURCE OF FUNDS
(Period: July 1, 2011 to June 30, 2012)

Applicant: KAHI MOHALA BEHAVIORAL HEALTH

BUDGET CATEGORIES		Total State Funds Requested (a)	PRIVATE FUNDING (b)	(c)	(d)
A.	PERSONNEL COST				
	1. Salaries				
	2. Payroll Taxes & Assessments				
	3. Fringe Benefits				
	TOTAL PERSONNEL COST				
B.	OTHER CURRENT EXPENSES				
	1. Airfare, Inter-Island				
	2. Insurance				
	3. Lease/Rental of Equipment				
	4. Lease/Rental of Space				
	5. Staff Training				
	6. Supplies				
	7. Telecommunication				
	8. Utilities				
	9				
	10				
	11				
	12				
	13				
	14				
	15				
	16				
	17				
	18				
	19				
	20				
	TOTAL OTHER CURRENT EXPENSES	0	0		
C.	EQUIPMENT PURCHASES				
D.	MOTOR VEHICLE PURCHASES				
E.	CAPITAL	200,000	113,000		
TOTAL (A+B+C+D+E)		\$ 313,000			
SOURCES OF FUNDING			Budget Prepared By:		
	(a) Total State Funds Requested	200,000	ROSE D. CHOY	677-2580	
	(b) PRIVATE FUNDING	113,000	Name (Please type or print) _____ Phone _____		
	(c)		_____		
	(d)		Signature of Authorized Official _____ Date _____		
TOTAL BUDGET		\$ 313,000	LEONARD LICINA, CHIEF EXECUTIVE OFFICER		
			Name and Title (Please type or print)		

BUDGET JUSTIFICATION PERSONNEL - SALARIES AND WAGES

Applicant: KAHI MOHALA BEHAVIORAL HEALTH

Period: July 1, 2011 to June 30, 2012

POSITION TITLE	FULL TIME EQUIVALENT	ANNUAL SALARY A	% OF TIME ALLOCATED TO GRANT REQUEST B	TOTAL STATE FUNDS REQUESTED (A x B)
				\$ -
Not Applicable				\$ -
				\$ -
				\$ -
				\$ -
				\$ -
				\$ -
				\$ -
				\$ -
				\$ -
				\$ -
				\$ -
				\$ -
				\$ -
				\$ -
				\$ -
				\$ -
				\$ -
				\$ -
				\$ -
TOTAL:				\$ -
JUSTIFICATION/COMMENTS:				

BUDGET JUSTIFICATION - EQUIPMENT AND MOTOR VEHICLES

Applicant: KAHI MOHALA BEHAVIORAL HEALTH

Period: July 1, 2011 to June 30, 2012

DESCRIPTION EQUIPMENT	NO. OF ITEMS	COST PER ITEM	TOTAL COST	TOTAL BUDGETED
Not Applicable			\$ -	
			\$ -	
			\$ -	
			\$ -	
			\$ -	
TOTAL:			\$ -	\$ -
JUSTIFICATION/COMMENTS:				

DESCRIPTION OF MOTOR VEHICLE	NO. OF VEHICLES	COST PER VEHICLE	TOTAL COST	TOTAL BUDGETED
			\$ -	
			\$ -	
			\$ -	
			\$ -	
			\$ -	
TOTAL:			\$ -	\$ -
JUSTIFICATION/COMMENTS:				

**BUDGET JUSTIFICATION
CAPITAL PROJECT DETAILS**

Applicant: KAHI MOHALA BEHAVIORAL HEALTH

Period: July 1, 2011 to June 30, 2012

FUNDING AMOUNT REQUESTED						
TOTAL PROJECT COST	ALL SOURCES OF FUNDS RECEIVED IN PRIOR YEARS		STATE FUNDS REQUESTED	OF FUNDS REQUESTED	FUNDING REQUIRED IN SUCCEEDING YEARS	
	FY: 2009-2010	FY: 2010-2011	FY:2011-2012	FY:2011-2012	FY:2012-2013	FY:2013-2014
PLANS						
LAND ACQUISITION						
DESIGN						
CONSTRUCTION			200,000	113,000		
EQUIPMENT						
TOTAL:			\$ 200,000	\$ 113,000		
JUSTIFICATION/COMMENTS:						

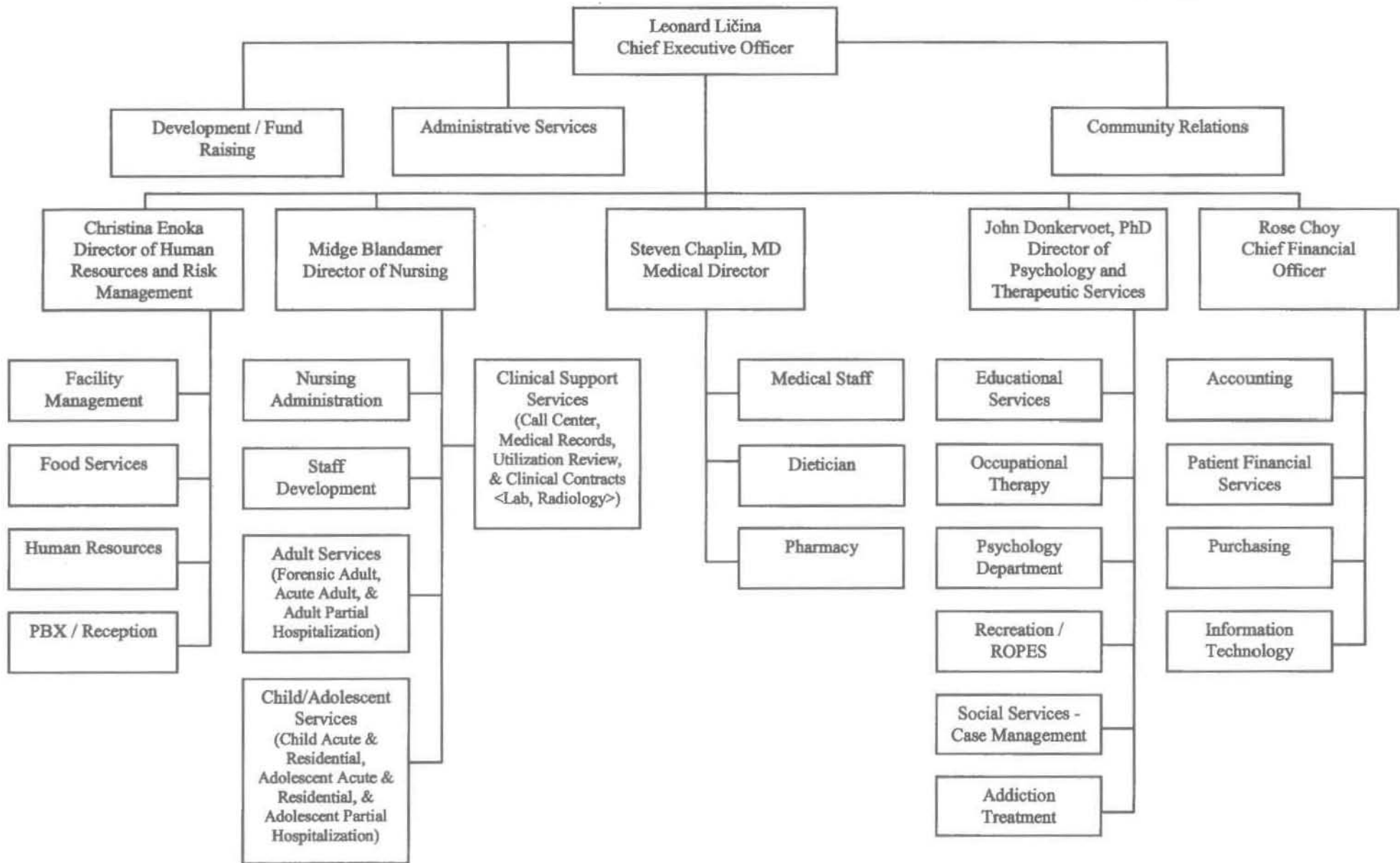
ATTACHMENT B

Sutter Health Pacific dba Kāhi Mōhala		
Lokelani Renovation Project		
All Other Potential Funding Sources		
INCOME		
Private Foundations		\$ 40,000
Individuals and Businesses		\$ 10,000
Legislative Grant in Aid		\$ 200,000
Other Public and Private Resources		\$ 63,000
TOTAL INCOME		<u>\$ 313,000</u>
EXPENSES		
<u>COMMON AREAS</u>		
Day Area Cabinets and Flooring		\$ 17,000
Unit Kitchen (1 unit– cabinets, doors, flooring, lighting)		\$ 15,000
Outdoor recreation area and security fence		\$ 30,000
Unit Entry Lobby (cabinets, flooring)		\$ 10,000
Ohana Room upgrades (2 rooms - flooring, furnishings)		\$ 20,000
<u>PATIENT ROOMS AND BATHROOMS</u>		
Patient bedroom upgrades (16 rooms)		\$ 176,000
Flooring, beds, desk/wall units, windows, safety lighting		
Bathroom Renovations (3)		\$ 45,000
TOTAL EXPENSE		<u>\$ 313,000</u>

KĀHI MŌHALA ORGANIZATION CHART

Reviewed and Approved:
Date: 9/30/2010

Chief Executive Officer





Kāhi Mōhala
Behavioral Health

A Sutter Health Affiliate

Sutter Health Pacific dba Kāhi Mōhala
Board of Trustees
2011

91-2301 Old Fort Weaver Road
Ewa Beach, Hawaii 96706
(808) 671-8511
(808) 677-2570 Fax

<p>Barbra Pleadwell (Chair) Partner Hastings & Pleadwell 1109 Bethel St., Ste. 410 Honolulu, HI 96813 Ph: (808) 538-0797 email: bap@hastingsandpleadwell.com</p>	<p>Diane Stewart (Vice Chair) 124 Boxford Square Folsom, California 95630 Ph: (916) 983-6943 email: dgstewart@sbcglobal.net</p>
<p>Sarah Krevans (Board Secretary) Sr. Vice President and Regional Executive Director Sutter Health 2200 River Plaza Drive, Suite 263 Sacramento, CA 95816 Ph: (916) 286-6712 email: krevans@sutterhealth.org</p>	
<p>Robert A. Alm Executive Vice President Hawaiian Electric Company, Inc. 900 Richards St., #403 Honolulu, HI 96813 Ph: (808) 543-7650 email: robbie.alm@heco.com</p>	<p>J. Kuhio Asam, M.D. Retired Physician 1288 Ala Moana Boulevard #13-A Honolulu, HI 96814 Ph: (808) 591-0011 Email: kuhio@myhokua.com</p>
<p>Dianne W. Brookins Shareholder and Director Alston, Hunt, Floyd & Ing, Attorneys 1001 Bishop Street 1800 (ASB) Tower Honolulu, HI 96813 Ph: (808) 524-1800 email: dbrookins@ahfi.com</p>	<p>Steven Chaplin, M.D. Medical Director Kāhi Mōhala 91-2301 Old Fort Weaver Rd. Ewa Beach, HI 96706 Ph: (808) 671-8511 email: chaplinl@kahi.org</p>

**Sutter Health Pacific dba Kāhi Mōhala
Board of Trustees
2011**

<p>David Hudson (Finance Chair) Sr. Vice President, Community Banking Division Central Pacific Bank P.O. Box 3590 Honolulu, HI 96811 Ph: (808) 544-3699 email: david.hudson@centralpacificbank.com</p>	<p>Leonard Licina Chief Executive Officer Kāhi Mōhala 91-2301 Old Fort Weaver Road Ewa Beach, HI 96706 Ph: (808) 677-2503 email: licinal@kahi.org</p>
<p>Nancy E. Pace, M.D., MSPH (Development Committee Chair) Physician 4615 Aukai Ave. Honolulu, HI 96816 Ph: (808) 256-3333 email: pacely@aol.com</p>	<p>Tina Shelton Director of Communications John A. Burns School of Medicine 1349-F Moanalualani Way Honolulu, HI 96819 Ph: (808) 692-0897 email: sheltont@hawaii.edu</p>
<p>Judge Allene R. Suemori Retired Judge 841 Bishop Street, Suite 801 Honolulu, HI 96813 Ph: (808) 532-1714 email: lauele@aol.com</p>	<p>Shelley J. Wilson President Wilson Homecare 1221 Kapiolani Blvd., Ste. 940 Honolulu, HI 96814 Ph: (808) 596-4486 email: shelley@wilsonhomecare.net</p>



Services Overview

Kāhi Mōhala Behavioral Health is a center of excellence for behavioral health care services. Kāhi Mōhala is dedicated to caring for people in need by providing a continuum of innovative, high quality and effective treatment services. Individualized and diverse treatment programs offer the maximum opportunity for personal growth. An interdisciplinary health care team coordinates patient care. This team provides the behavioral health care and education that our patients need.

Program Profile

Comprehensive Behavioral Health Services

- ◆ Male and Female, ages 4 – Adult
- ◆ Acute Treatment Programs
- ◆ Residential Treatment Programs

Admissions Overview

Kāhi Mōhala offers a full continuum of behavioral health care services for patients experiencing emotional or behavioral problems that interfere with daily functioning in work, family, school and social settings. The individual may be experiencing difficulty with:

- ◆ Alcohol and Drug Abuse
- ◆ Anxiety
- ◆ Depression
- ◆ Eating Disorders
- ◆ Psychotic Disorders
- ◆ Emotional Disturbances
- ◆ Affect Disorders
- ◆ Post Traumatic Stress Disorder (PTSD)
- ◆ Cognitive Disorders
- ◆ Conduct Disorders
- ◆ Oppositional Defiant Disorders
- ◆ Attention Deficit Hyperactivity Disorder (ADD/ADHD)

Treatment Services

- ◆ Evaluation and Referral
- ◆ Acute Treatment Programs
Adult, ages 18 and older
Adolescent, ages 13 - 17
Child, ages 4 -12
- ◆ Residential Treatment Programs
Adolescent, ages 13 - 17
Child, ages 4 -12
- ◆ Partial Hospitalization
Adolescent, ages 13 -18

Specialty Treatment Services

- ◆ Rehabilitative Services
Occupational Therapy
Art Therapy
Recreational Therapy
- ◆ Educational Program
- ◆ Reality-Oriented Physical Experiential Services (ROPES)

Internal Revenue Service

Date: March 21, 2005

SUTTER HEALTH PACIFIC
KAHI MOHALA HOSPITAL
% LEONARD LICINA
91 2301 FORT WEAVER RD
EWA BEACH HI 96706

Department of the Treasury
P. O. Box 2508
Cincinnati, OH 45201

Person to Contact:

John C. Crawford 31-08343
Customer Service Representative

Toll Free Telephone Number:

8:30 a.m. to 5:30 p.m. ET
877-829-5500

Fax Number:

513-263-3756

Federal Identification Number:

99-0298651

Dear Sir or Madam:

This is in response to your request of March 21, 2005, regarding your organization's tax-exempt status.


In January 1995 we issued a determination letter that recognized your organization as exempt from federal income tax. Our records indicate that your organization is currently exempt under section 501(c)(3) of the Internal Revenue Code.

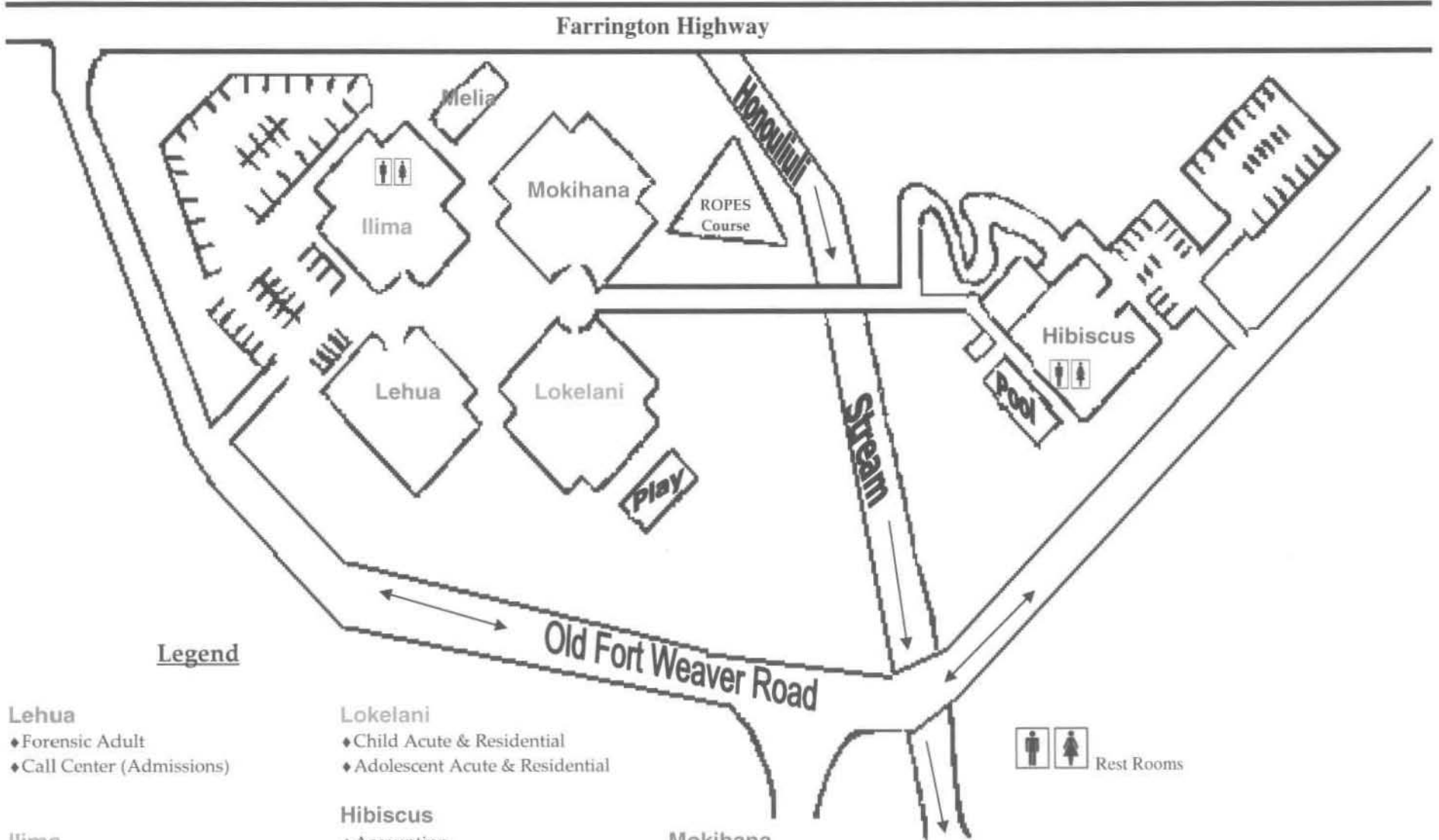
Our records indicate that your organization is also classified as a hospital under sections 509(a)(1) and 170(b)(1)(A)(iii) of the Internal Revenue Code.

Our records indicate that contributions to your organization are deductible under section 170 of the Code, and that you are qualified to receive tax deductible bequests, devises, transfers or gifts under section 2055, 2106 or 2522 of the Internal Revenue Code.

If you have any questions, please call us at the telephone number shown in the heading of this letter.

Sincerely,


Janna K. Skufca, Director, TE/GE
Customer Account Services



Legend

Lehua

- ◆ Forensic Adult
- ◆ Call Center (Admissions)

Ilima

- ◆ Food Services
- ◆ Facilities
- ◆ OT, RT, Education
- ◆ ECT Services (suspended)

Lokelani

- ◆ Child Acute & Residential
- ◆ Adolescent Acute & Residential

Hibiscus

- ◆ Accounting
- ◆ Administration
- ◆ Community Relations
- ◆ Human Resources
- ◆ Information Technology
- ◆ Patient Financial Services
- ◆ Purchasing

Mokihaana

- ◆ Acute Adult

Melia

- ◆ Adolescent Partial Hospital Program



91-2301 Old Fort Weaver Road
Ewa Beach, Hawai'i 96706
808-671-8511
808-677-2570 Fax

THE ROPES PROGRAM

The ROPES Program is an innovative form of therapy that uses the power of action oriented experiences to help participants make positive changes in their lives. With a variety of group and individual activities on a specially designed obstacle course, ROPES challenges participants to master unusual tasks. At first these task seem impossible to accomplish, but in fact become fun and enjoyable to complete.

A primary goal of ROPES is to place individuals in physically, emotionally, and intellectually demanding situations where skills of cooperation, problem-solving, goal-setting, and self awareness are rapidly developed. Each ROPES event encourages participants to deal with an issue in the "here-and-now," such as problems communicating with others or a need to feel successful.

A high level of fitness or physical ability is not required to participate in ROPES. What is more important is each individual's willingness to get involved, to share, and to take appropriate risks with other group members.



THE ROPES COURSE

The ROPES course consists of cables, ropes, pulleys, and wood beams set between utility poles. Three types of activity areas are included in the ROPES course:

Group Initiative Area

Initiative events are used to challenge a small group of individuals to work together to achieve tasks that initially seem impossible. The process enables each individual to contribute to the group effort. For example, one initiative called "The Wall" challenges group members to help each other over a 12-foot-high wall.

High ROPES Activities

These events require the individual's choice and commitment to attempt a series of events approximately 32-feet in the air. The activities build upon the positive attitudes developed on the low ROPES course but are primarily designed to encourage initiative and appropriate risk-taking, and to provide participants with feelings of accomplishment. Other group members provide support and encouragement from below.

Low ROPES Activities

Built close to the ground, these low activity areas provide individuals and small teams with situations that require coordinated physical, emotional, and thoughtful effort. From these experiences, participants develop a better sense of personal control and determination resulting in enhanced self-esteem and confidence as well as interdependence and trust in others.



Climbing Wall

Preparation

The ROPES facilitator plans a ROPES session that addresses each individual's needs and goals. The participant's health history is reviewed so that appropriate activities can be planned around any physical limitations or recurring medical problems.

Size of Group

Generally, the ROPES groups are small, consisting of 16-20 participants. Often these individuals share common goals.

Discussion and Follow-up

An important aspect of the ROPES process is group discussion. Before, during, and after each session, the ROPES facilitator leads participants in discussion of the group's achievements and experiences on the ROPES course. During this time, participants are encouraged to draw conclusions, gain new insights, and make personal discoveries.





ROPES Course



Swimming Pool



Occupational Therapy



Nurses' Station





Administration Building



Courtyard



Walking Trail



Amphitheater





Our Mission...

Kāhi Mōhala is dedicated to caring for people in need by providing innovative, quality and effective behavioral health services.

Our Philosophy...

Improving the quality of life for the people we serve is at the heart of Kāhi Mōhala's philosophy of care.

Entrusted with delivering the highest standards of care to the people we serve, Kāhi Mōhala specializes in the leading approaches in behavioral health, delivering the best possible treatment outcomes.