

House District 1

Senate District 2

**THE TWENTY-SIXTH LEGISLATURE
HAWAII STATE LEGISLATURE
APPLICATION FOR GRANTS & SUBSIDIES
CHAPTER 42F, HAWAII REVISED STATUTES**

Log No: 14-C

For Legislature's Use Only

Type of Grant or Subsidy Request:

GRANT REQUEST – OPERATING

GRANT REQUEST – CAPITAL

SUBSIDY REQUEST

JAN 27 2011

"Grant" means an award of state funds by the legislature, by an appropriation to a specified recipient, to support the activities of the recipient and permit the community to benefit from those activities.

"Subsidy" means an award of state funds by the legislature, by an appropriation to a recipient specified in the appropriation, to reduce the costs incurred by the organization or individual in providing a service available to some or all members of the public.

"Recipient" means any organization or person receiving a grant or subsidy.

STATE DEPARTMENT OR AGENCY RELATED TO THIS REQUEST (LEAVE BLANK IF UNKNOWN): DEPARTMENT OF LAND AND NATURAL RESOURCES

STATE PROGRAM I.D. NO. (LEAVE BLANK IF UNKNOWN): _____

1. APPLICANT INFORMATION:

Legal Name of Requesting Organization or Individual:
Community Based Education Support Services (CBESS)

Db/a:

Street Address: 174 Kamehamea Ave

Mailing Address: Hilo, Hawaii 96720

2. CONTACT PERSON FOR MATTERS INVOLVING THIS APPLICATION:

Name JOHN THATCHER

Title Director

Phone # 808 961-3664

Fax # 808 9612665

e-mail john_thatcher@hawaii.rr.com

3. TYPE OF BUSINESS ENTITY:

- NON PROFIT CORPORATION
- FOR PROFIT CORPORATION
- LIMITED LIABILITY COMPANY
- SOLE PROPRIETORSHIP/INDIVIDUAL

6. DESCRIPTIVE TITLE OF APPLICANT'S REQUEST:

COMMUNITY BASED EDUCATION SUPPORT SERVICES (AFFILIATED WITH CONNECTIONS PUBLIC CHARTER SCHOOL), IS SEEKING A \$1.5 MILLION GRANT IN AID TO ASSIST IN THE CONSTRUCTION OF A NEW CAMPUS ON LAND LEASED FROM DLNR. CURRENTLY CONNECTIONS PCS LEASES TWO PROPERTIES FOR ITS ELEMENTARY/MIDDLE SCHOOL (KRESS BUILDING) AND THE HIGH SCHOOL (NANI MAU GARDENS). CURRENT KRESS LOCATION IS IN A TSUNAMI ZONE. NEW CAMPUS WILL CONSOLIDATE THE SCHOOL, BE LEED CERTIFIED, AND OFFER A VARIETY OF COMMUNITY BASED SERVICES IN CONJUNCTION WITH THE SCHOOL

4. FEDERAL TAX ID #:

5. STATE TAX ID #:

7. AMOUNT OF STATE FUNDS REQUESTED:

FY 2011-2012: \$ 1,500,000

8. STATUS OF SERVICE DESCRIBED IN THIS REQUEST:

- NEW SERVICE (PRESENTLY DOES NOT EXIST)
- EXISTING SERVICE (PRESENTLY IN OPERATION)

SPECIFY THE AMOUNT BY SOURCES OF FUNDS AVAILABLE AT THE TIME OF THIS REQUEST:

STATE \$ 0

FEDERAL \$ 0

COUNTY \$ 0

PRIVATE/OTHER \$ 169,000

MR. JOHN THATCHER, DIRECTOR, CBESS
NAME & TITLE

JANUARY 25, 2011
DATE SIGNED

Application for Grants and Subsidies

If any item is not applicable to the request, the applicant should enter “not applicable”.

I. Background and Summary

This section shall clearly and concisely summarize and highlight the contents of the request in such a way as to provide the State Legislature with a broad understanding of the request. Include the following:

1. A brief description of the applicant's background;

Community Based Education Support Services (CBESS), a 501c3 nonprofit organization, was established as an affiliated support organization for Connections Public Charter School (CPCS). Connections received its charter in 2000 and opened with 184 students in grades K-6. By August 2001 the charter school had expanded to a K-12 program with a total of 360 students. It's current enrollment is 368 students, with 24 FTE teachers.

Connections, which evolved from a school within a DOE school at Mountain View Elementary School, was created from a vision shared by educators, parents, students and members of the community to provide an innovative, community-based learning experience for families of Hilo and the surrounding areas.

As a public charter school Connections provides a free education sustained by public funding and cannot charge tuition. Its faculty and staff are public employees receiving the same benefits as other state employees. Students are bound by the same standards as Hawai'i's DOE schools, and take the same tests. The mission of Hawai'i's charter schools includes cutting red tape, innovating, serving as a resource for other schools, and offering a choice for parents, students and staff. Charter schools enjoy more flexibility in governing the school, creating its curriculum, managing the size of the school and its classes, setting its school schedule and calendar, integrating hands-on learning, hiring staff, and negotiating with public unions.

Connections is currently located on two sites: the elementary and middle schools are located in the Kress Building on Kamehameha Ave in Hilo. The Kress building is owned by CBESS. The high school is presently located in leased facilities at the Nani Mau Gardens just outside Hilo Town.

Connections is known for its hands-on, real world applied learning curriculum, including robotics, sustainable agriculture, and ocean studies. In 2010 Connections joined with three other leading charter schools to form The Charter School S.T.E.M.(Science, Technology, Engineering, Math) Consortium. The Consortium was formed to assist Hawai'i's charter schools in developing their STEM programs for students, to increase student performance, develop authentic accountability and performance measurements, and to build a collective capacity among K-12 schools. The Mission Statement for the Consortium is as follows:

To analyze, assess, facilitate, coordinate, service and promote hands-on, integrative “S.T.E.M. – for – ALL STUDENTS”; improve student performance; provide professional development and S.T.E.M. leadership for teachers; develop authentic performance measures and greater accountability; and develop partnerships and regional resource

centers with S.T.E.M. providers and other schools.

As a member of the Consortium, Connections has undergone an innovative S.T.E.M. AUDIT, the purpose of which is to assess the degree to which S.T.E.M. has been a feature of the school's curriculum, collect baseline and comparable data to assess the status of S.T.E.M. knowledge, attitudes, and education throughout the system, and suggest ways in which the various asset and strengths of individual schools can be partnered and leveraged to improve S.T.E.M. education in Hawai'i, and to understand and improve the S.T.E.M. –capacity of the school and its faculty.

Connections is currently a participant in THE MAKERY project. THE MAKERY is a sophisticated multi-dimensional computer controlled fabrication mill that, using computer aided designs by students, can fabricate products made of wood, plastic, metal, etc. Among its capabilities is to produce high quality Hawai'ian steel guitars, environmental sensors, and, THE MAKERY can make...A MAKERY.

Connections serves a diverse student population. It is a Title I School, with a high percentage of Special Education Students. The high school has well over 20% SPED enrollment. Ethnically the 2009-2010 student population was as follows in descending order: 33% White, 31% Hawai'ian or Part Hawai'ian, 12% - Mixed (Other), 6% Japanese, 5% Filipino, 4% Portuguese, 3% African American, 2% Samoan, 2% American Indian, 1% Korean, and 1% Chinese.

Connections seeks to consolidate the Elementary, Middle and High Schools on a single campus that is LEED (Leadership in Energy and Environmental Design) certified and offers opportunities to fulfill the over mission of the school as well as serve as a major resource for the community.

The school has secured a long term lease from the State of Hawai'i on a vacant, undeveloped 72 acre parcel on Mauna Loa's lower slopes above Hilo south of Kaumana Drive. Plans for the new site include an elementary, middle and high school.

Among the innovative elements planned include a senior day care center, a residential student visitor dorm, a S.T.E.M. applied learning center, agricultural sustainability learning facilities, and an arts center.

2. The goals and objectives related to the request;

CBESS is requesting a \$1,500,000 capital grant from the State of Hawai'i to assist in the immediate implementation of planning, design, site preparation and initial construction of the new Kaumana campus. An Environmental Assessment, prepared by Wil Chee – Planning and Environmental, has been finalized and approved. The project has received a Finding of No Significant Impact.

Total estimated cost for Phase I of the new campus is approximately \$11 million. The plan CBESS uses on the construction of essential inside and outside learning areas is consistent with the Connections' mission and vision for project based learning, S.T.E.M., and the role of the campus as a K-12 learning center for schools, teachers, students and the overall community on the Big Island.

The campus will seek at least a Silver LEED Green Building Rating System. Alternative and sustainable energy sources, as well as sustainable strategies and technology for energy and water use, would be integrated wherever feasible. Preliminary conceptual plans include temperature control through building orientation to regulate temperatures; air movement by constructing building to maximize natural air movement for cross-ventilation; lighting using clerestory windows; energy production through use of high-efficiency, unobtrusive, photovoltaic laminates; rainwater collection; and waterless urinals and low/dual flush toilets.

Connections has entered into a 65 year lease with the Department of Land and Natural Resources to construct and operate it's K-12 programs and related facilities. The school will be working with CBESS to acquire funding to build the new facilities. Specifically, The Foundation's project will involve obtaining grading and building permits, coordinating final bid pricing and securing a construction contract, site preparation work and construction.

CBESS has already developed a detailed strategic fundraising and marketing plan, and is in the process of soliciting funds for completion of the entire project.

3. State the public purpose and need to be served;

Hawai'i's 31 Public Charter Schools, 13 of which are on the Big Island, serve as an important alternative and choice for Hawai'i's parents and students. Charter schools are public schools, with public funding, public employees covered by Hawai'i collective bargaining law (HRS Chapter 89), and cannot charge tuition. Charter schools are bound by the same Statewide academic standards, and take the same state-developed tests as public Department of Education Schools. With greater flexibility in governance and curriculum, schools such as Connections Public Charter School have had the freedom to innovate and create applied learning models that contribute to the movement for meaningful reform and innovations throughout Hawai'i's public school system.

The choice of an alternative, hands-on, S.T.E.M. related education on the Hilo side of the Big Island is clearly in the public interest to preserve and expand this alternative for the parents, students and community.

4. Describe the target population to be served; and

Connections' current K-12 enrollment is 368. CPCS serves an ethnically and economically diverse population. Ethnically the 2009-2010 student population is as follows in descending order: 33% White, 31% Hawai'ian or Part Hawai'ian, 12% - Mixed (Other), 6% Japanese, 5% Filipino, 4% Portuguese, 3% African American, 2% Samoan, 2% American Indian, 1% Korean, and 1% Chinese.

Connections currently has about 60 students, in grades kindergarten through grade 12, receiving special education services under the Individuals with Disabilities in Education Act (IDEA) and six students receiving 504 accommodations. Under an inclusion model the school has adopted, all IDEA students are expected to participate fully with their regular education peers with modifications and accommodations as outlined in their Individualized Education Plan (IEP). The school also has a growing English Language Learner (ELL) population. While they currently represent a small portion of the population, accommodations are being made to support these students in full inclusion classrooms. The 12 identified ELL students are in grades K-9. Their classroom teachers and a literacy coordinator provide direct assistance or classroom support as needed.

The new Kaumana Campus will not only serve the current student population, but also provide valuable resources to the entire community. The campus will incorporate an Intergenerational Learning Center, including a senior day care center with a capacity of 45 senior participants each day. Planning is under way to also consider a co-located preschool, similar to the model developed by Seagull Schools at Kapolei on Oahu.

Additional community resources will include a dormitory for visiting students from other Hawai'i schools, the U.S. mainland, and other interested visitors from around the world. This dormitory will connect Hawai'i

students and educators with the outside world through meaningful interactions and collaborations.

The new campus is also planning a Community Arts Center and an Agricultural Sustainability Center to promote the arts and sustainability on the Big Island.

5. Describe the geographic coverage.

The 2000 census indicated there were 40,759 people, 14,577 households, in Hilo. In these households 30.6% had children under the age of 18 living with them, 48.5% were married couples living together, 15.2% had a female householder with no husband present, and 30.7% were non-families. 24.1% of all households were made up of individuals and 10.6% had someone living alone who was 65 years of age or older. The average household size was 2.70 and the average family size was 3.19. Affordable housing prices have led to an enormous increase in developments in Puna, and have made this district the fastest growing area on the Big Island. In the last 20 years the population has grown by nearly 20,000 people and it is estimated that Puna will have a higher population than Hilo by 2020. However, between 2002 and 2006 the price of houses more than doubled and the price of vacant land increased over fivefold, as increasing numbers of people from outside the district (often from the mainland U.S.) bought into the last affordable market in the state.

Connections attracts students from a 100 mile radius. As a school of choice, the majority of students attending Connections are from the East Hawai'i region composed primarily of families residing in Hilo and Puna.

Recent analysis of the most current census data on incomes indicate that the project will qualify for New Market Tax Credits.

II. Service Summary and Outcomes

The Service Summary shall include a detailed discussion of the applicant's approach to the request. The applicant shall clearly and concisely specify the results, outcomes, and measures of effectiveness from this request.

1. Describe the scope of work, tasks and responsibilities;

CBESS's campus will be managed by a Building Committee and a Capital Fundraising Cabinet. The project involves hiring a Project Manager (recently selected), selecting an Architect, selection of a method of construction (Design-Bid, Design-Build, or Design –Assist), selection of a general contractors, coordination, obtaining grading and building permits, coordinating final bid pricing and securing a construction contract. Site preparation work will include: a - Grub and Clearing; b - Site grading; c - Site infrastructure; d - Parking & Driveways; e - Landscape & Irrigation; and f – beginning construction. Because of the tight timeframe for relocation of the school, the CBESS will move as quickly as possible into the construction phase. CBESS intends to phase in the relocation of the Elementary and Middle School in subsequent PHASES.

PHASE I of the new Campus, for which Grant in Aid Capital funds are requested, will include the following.

- Planning, Design, Permitting, Pricing
- Construction site preparation
- High School for 200 students

- Administration Building, Offices
- S.T.E.M. Applied Learning Center
- A Multigenerational Learning Center (include senior day care)
- A Student Visitor Dormitory
- Maintenance and Equipment Building
- Shower and Toilets.

Objectives and tasks involved in the entire project are as follows:

Objective 1: Planning & Design

Objective 2: Permitting & Final Pricing

- 2a - Grading Permit
- 2b - Building Permit
- 2c - Coordinate Final Bid Pricing
- 2d - Negotiate Construction Contract

Objective 3: Site work

- 3a - Extension of Existing Road and Waterline
- 3b - Grub and Clearing
- 3c - Site grading
- 3d - Site infrastructure
- 3e- Parking & Driveways
- 3f - Landscape & Irrigation

Objective 4: Building Construction

- 4a – High School Classroom Buildings
- 4b – S.T.E.M. learning Center
- 4c – Multigenerational Learning Center
- 4c – Student Visitor Dorm
- 4d – Administration Building & Faculty Offices

Specifically, CBESS' Chapter 42 Capital project will involve obtaining grading and building permits, coordinating final bid pricing and securing a construction contract. Site preparation work will include: a - Grub and Clearing; b - Site grading; c - Site infrastructure; d - Parking & Driveways; e - Landscape & Irrigation; f – initial construction.

Contractor:

The Project Manager, Michael Gangloff, has been selected. He is a licensed general contractor and will be overseeing the project. Mr. Gangloff has 20 years of construction experience, ten years as an owner. Among his project completed were the Aupuni Center in Hilo, and five structures at the Pohakuloa Military Facility. He has experience in renovation of public schools.

The CBESS Board, Consultants, Project Manager and Capital Campaign Cabinet has therefore proposed the following scope of work for the Campus project:

- Form a collaborative team of professionals to develop a preliminary budget and comprehensive master schedule.
- Prepare project requests for proposal for public dissemination and bid.
- Provide assistance in reviewing and analyzing all recipient bids from prospective sub-contractors.

- Ensure that design is both aesthetically successful and duly responsive to project goals.
- Coordinate a technology implementation strategy with construction plan optimum current and future performance.
- Assure that all sub-contractors and other participants understand fully the project's design and purpose.
- Monitor all progress to anticipate difficulties, resolve issues and ensure that project adheres to schedule.
- Assure that work site meets all requisite OSHA and DLIR standards for a safe work environment.
- Coordinate final stages of construction, including punch lists and certificate of occupancy.

2. The applicant shall provide a projected annual timeline for accomplishing the results or outcomes of the service;

Timeline To Date:

Property search and location: 2008-2009

Selection of Architect: 2008

Board Decision to Commit to Campaign: May 2010

Environmental Studies & Permitting: 2008 - ongoing

Marketing and Feasibility Study: Spring 2010

Approval of Long Term Lease with BLNR: January 13, 2011

Selection of Fundraising Chair: October 2010

Selection of Building Manager: November 2010

Projected Timeline:

Fundraising and Financing: November 2010 – November 2013

Design and Planning: May 2011 – May 2012

Special Use Permitting: March 2011 – November 2011

Site Preparation: November 2011 – February 2012

Construction: February 2012 – February 2013

3. The applicant shall describe its quality assurance and evaluation plans for the request. Specify how the applicant plans to monitor, evaluate, and improve their results; and

CBESS' Board, as well as Connections' Local School Board, have established a Capital Campaign Cabinet, with Mr. Stacy Higa as chair. A Building and Construction Committee, headed by Mr. Eric Boyd, will review the proposals and make final recommendations to the board regarding the selection of the general and subcontractors and to provide oversight of all phases and aspects of the project. Connections executive staff will meet regularly with general contractor to keep abreast of progress, and ensure that any difficulties, both anticipated and unanticipated, will be resolved optimally to assure that project continues on schedule.

The Building and Construction Committee will act as the owner's agent to 1) review the progress of construction, 2) review the quality of construction, 3) ensure construction follows LEED requirements; 4) process clarification requests and product submittals, 5) approve contractor payment requests, 5) provide final inspection.

4. The applicant shall list the measure(s) of effectiveness that will be reported to the

State agency through which grant funds are appropriated (the expending agency). The measure(s) will provide a standard and objective way for the State to assess the program's achievement or accomplishment. Please note that if the level of appropriation differs from the amount included in this application that the measure(s) of effectiveness will need to be updated and transmitted to the expending agency.

Success and achievement will be measured substantively by CBESS's ability to adhere to the prospective timeline regarding the fundraising, site preparation, and construction of PHASE I. The Marketing and Feasibility Study, prepared by Myerberg Shain and Associates (MSA) has laid out a detailed timeline for fundraising and project implementation. Detailed timelines have been developed by the architect and the Project Manager that serve as an ongoing measurement of accountability.

III. Financial

Budget

1. The applicant shall submit a budget utilizing the enclosed budget forms as applicable, to detail the cost of the request.

Please see information provided on all attached pages, pursuant to legislative directive.

2. The applicant shall provide its anticipated quarterly funding requests for the fiscal year 2010-2011.

Quarter 1	Quarter 2	Quarter 3	Quarter 4	Total Grant
\$1,500,000				\$1,500,000

3. The applicant shall provide a listing of all other sources of funding that they are trying to obtain for fiscal year 2010-2011.

CBESS has recently commenced an ambitious but achievable capital campaign to raise funds for the new school campus. A Capital Fundraising Campaign Cabinet has been established, to be chaired by Mr. Stacy Higa. A Marketing and Feasibility Study has been prepared which includes a detailed strategic fundraising plan which includes use of the innovative New Market Tax Credits. The Project qualifies for these credits. CBESS and Connections Public Charter School have already invested substantial sums for preliminary environmental studies, preliminary design, and successful efforts to secure a long term lease from the Hawai'i Board of Natural Resources. Requests for capital grant funding will be made to: The State of Hawai'i, Federal Agencies, Private Organizations and Foundations, Individual Gifts, New Market Tax Credits

IV. Experience and Capability

A. Necessary Skills and Experience

The applicant shall demonstrate that it has the necessary skills, abilities, knowledge of, and experience relating to the request. State your experience and appropriateness for providing the service proposed in this application. The

applicant shall also provide a listing of verifiable experience of related projects or contracts for the most recent three years that are pertinent to the request.

CBESS has retained the services of an experienced fundraising firm, Myerberg Shain and Associates, which has long and successful record raising capital funds for nonprofit organizations in Hawai'i and on the U.S. Mainland. CBESS has also selected an experienced Project Manager and Chair of the Capital Fundraising Campaign Cabinet.

Mr. John Thatcher and his administrative team continue to provide experienced support for the effort, building on their involvement in the securing of innovative financing to purchase the Kress Building in Hilo. Charter school administrators are routinely required to provide fiscal and administrative oversight of all aspects of school governance, including facilities leases, loans, and maintenance.

CAPITAL CAMPAIGN EXPERIENCE:

CBESS has selected as its Project Manager Michael R. Gangloff, President of MIRA Image Construction Contractors, who will review the proposals and make final recommendations to the board regarding the selection of the contractors and to provide oversight of all phases and aspects of the project. He is used to labor negotiations and managing projects of millions of dollars on a routine basis. CBESS has utilized the professional planning services of Wil Chee, which has been responsible for preparation of the environmental studies leading up to final approval by the Board of Land and Natural Resources. Urban Works Architecture has also provided services as needed in the conceptual development. In addition, CBESS has retained the services of Myerberg Shain for marketing, branding, training and fundraising for this project.

B. Facilities

The applicant shall provide a description of its facilities and demonstrate its adequacy in relation to the request. If facilities are not presently available, describe plans to secure facilities. Also describe how the facilities meet ADA requirements, as applicable.

CBESS is requesting a \$1,500,000 capital grant (14% of the total PHASE I cost) from the State of Hawai'i to assist in the immediate implementation of planning, design, site preparation and initial construction of the new campus located on 72 acres in the Kaumana area above Hilo. Total estimated cost for all phases of the campus project is approximately \$11 million. An important element for the total financing package will be the use of innovative New Market Tax Credits. The CBESS plan is for construction of essential inside and outside learning areas consistent with Connections' mission and vision for project based learning, Science, Technology, Engineering and Math (S.T.E.M.), and the role of the campus as a K-12 learning center for schools, teachers, students and the community.

CBESS will build a state of the art model sustainable green school, utilizing all the natural resources available to create a healthy environment conducive to learning while saving energy, resources and money. LEED certification; zero waste; electricity production using solar, water use reduction, and a model operations and maintenance program demonstrating Best Practices for controlling the carbon footprint and integration of sustainability into the curricula.

The school has entered into a 65 year lease with DLNR and has asked CBESS to fund and construct a

campus for the Connections Public Charter School K-12 programs. Specifically, PHASE I of the project will involve obtaining grading and building permits, coordinating final bid pricing and securing a construction contract, site preparation work and construction.

The estimated total cost for PHASE I is approximately \$9.5 million. CBESS has already developed a detailed strategic fundraising and marketing plan, and is in the process of soliciting funds for completion of the entire project.

V. Personnel: Project Organization and Staffing

A. Proposed Staffing, Staff Qualifications, Supervision and Training

The applicant shall describe the proposed staffing pattern and proposed service capacity appropriate for the viability of the request. The applicant shall provide the qualifications and experience of personnel for the request and shall describe its ability to supervise, train and provide administrative direction relative to the request.

Connections is governed by a Local School Board, in partnership with the CBESS Board of Directors. The powers and duties of the Local School Board are provided by law, specifically:

"Local school board" means the autonomous governing body of a charter school that:

- (1) Receives the charter and is responsible for the financial and academic viability of the charter school and implementation of the charter;
- (2) Possesses the independent authority to determine the organization and management of the school, the curriculum, virtual education, and compliance with applicable federal and state laws;
- and (3) Has the power to negotiate supplemental collective bargaining agreements with exclusive representatives of their employees."

The Local School Board is a "stakeholder" board, whose membership includes required representation from the administration, administrative support staff, teachers, students, and members from the community. This membership ensures that a wide range of perspectives and expertise is brought to bear on the governance and management of the school. The Local School Board has authority to select the principal.

It is relevant to note that charter schools in Hawai'i receive their funds in lump sum increments, based on an annual per pupil legislative allocation that is multiplied by the number of students enrolled. The school administration is responsible for annual audits, meeting State academic standards, securing facilities, and a wide variety of sophisticated accounting and accountability rules. Thus, the leadership for the proposed Capital project is prepared to exercise appropriate fiscal and administrative oversight of the project.

These two governing bodies have routinely managed their financial resources to secure and maintain a school facility. The responsibilities for management of the per pupil allocation to a charter school is much more akin to the management of a nonprofit organization than a traditional public school.

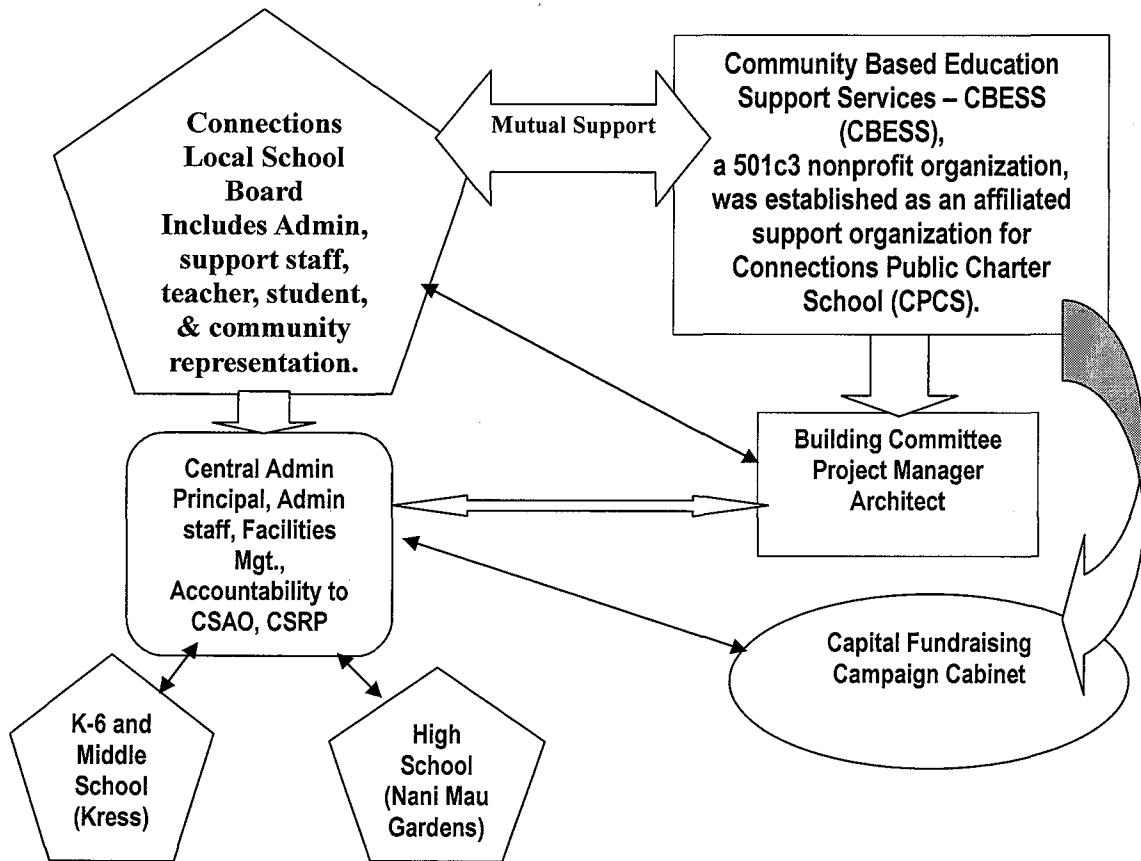
In 2006 CBESS secured a low interest loan from the Raza Development Fund to purchase the iconic Kress Building in Hilo. This is currently the location of the Middle and Elementary schools. Connections has moved forward in its plans by retaining the services of planning and architectural firms to prepare the Environmental Assessment and an experienced consultant to prepare a marketing and feasibility study and raise funds for the project.

To enhance the professionalism of the current leadership team, a Building Committee has been selected to govern and manage the project. The Committee includes: Mr. Eric Boyd – Connections Facilities Manager, Mr. Michael R. Gangloff, Project Manager - President of MIRA Image Construction Contractors

A Capital Fundraising Cabinet is also being recruited, chaired by Mr. Stacy Higa, and supported by Myerberg Shain and Associates, who also prepared the Marketing and Feasibility Study. The Cabinet will include professionals with general expertise as well as strong ties with both Hilo and Honolulu.

B. Organization Chart

The applicant shall illustrate the position of each staff and line of responsibility/supervision. If the request is part of a large, multi-purpose organization, include an organizational chart that illustrates the placement of this request.



VI. Other

A. Litigation

The applicant shall disclose any pending litigation to which they are a party, including the disclosure of any outstanding judgment. If applicable, please explain.

There is no litigation pending.

B. Licensure or Accreditation

Specify any special qualifications, including but not limited to licensure or accreditation that applicant possesses relevant to this request.

Connections has a charter received from the State Board of Education, and has also in the process of seeking accreditation from WASC.

BUDGET REQUEST BY SOURCE OF FUNDS
(Period: July 1, 2011 to June 30, 2012)

Applicant: Community Based Education Support Services (CBESS)

BUDGET CATEGORIES	Total State Funds Requested (a)	Federal Funds (b)	Prospective Fundraising (c)	New Market Tax Credits (d)
A. PERSONNEL COST				
1. Salaries				
2. Payroll Taxes & Assessments				
3. Fringe Benefits				
TOTAL PERSONNEL COST				
B. OTHER CURRENT EXPENSES				
1. Airfare, Inter-Island				
2. Insurance				
3. Lease/Rental of Equipment				
4. Lease/Rental of Space				
5. Staff Training				
6. Supplies				
7. Telecommunication				
8. Utilities				
9. Planning & Design		43,556	419,000	
10. Construction - Site Prep & Grading	1,500,000	1,748,638	751,362	
11. Construction - Administrative Bldgs.			258,000	795,000
12. Construction - Dormitories				1,070,000
13. Construction - Classroom Bldgs.				1,137,500
14. Construction - Pre-School & Daycare				414,750
15. Specifications & Engineering		207,806		
16. Utilities Infrastructure			1,000,000	
17. Furnishings & Equipment			654,388	
18. Ancillary Development Costs			1,000,000	
19				
20				
TOTAL OTHER CURRENT EXPENSES	1,500,000	2,000,000	4,082,750	3,417,250
C. EQUIPMENT PURCHASES				
D. MOTOR VEHICLE PURCHASES				
E. OTHER				
TOTAL (A+B+C+D+E)	1,500,000	2,000,000	4,082,750	3,417,250
SOURCES OF FUNDING		Budget Prepared By:		
(a) Total State Funds Requested	1,500,000	John Thatcher	808-961-3664	
(b) Federal Funds	2,000,000	Name (Please type or print)		Phone
(c) Prospective Fundraising	4,082,750	[Redacted Signature]		1/25/11
(d) New Market Tax Credits	3,417,250	Signature of Authorized Official		Date
TOTAL BUDGET	11,000,000	John Thatcher, Director		
		Name and Title (Please type or print)		

BUDGET JUSTIFICATION PERSONNEL - SALARIES AND WAGES

Applicant: Community Based Education Support Services (Conne

Period: July 1, 2011 to June 30, 2012

N.A.

POSITION TITLE	FULL TIME EQUIVALENT	ANNUAL SALARY A	% OF TIME ALLOCATED TO GRANT REQUEST B	TOTAL STATE FUNDS REQUESTED (A x B)
				\$ -
				\$ -
				\$ -
				\$ -
				\$ -
				\$ -
				\$ -
				\$ -
				\$ -
				\$ -
				\$ -
				\$ -
				\$ -
				\$ -
				\$ -
				\$ -
TOTAL:				
JUSTIFICATION/COMMENTS:				

BUDGET JUSTIFICATION - EQUIPMENT AND MOTOR VEHICLES

Applicant: Community Based Education Support § Period: July 1, 2011 to June 30, 2012

N.A.

DESCRIPTION EQUIPMENT	NO. OF ITEMS	COST PER ITEM	TOTAL COST	TOTAL BUDGETED
Not Applicable			\$ -	
			\$ -	
			\$ -	
			\$ -	
			\$ -	
TOTAL:				
JUSTIFICATION/COMMENTS:				

DESCRIPTION OF MOTOR VEHICLE	NO. OF VEHICLES	COST PER VEHICLE	TOTAL COST	TOTAL BUDGETED
Not Applicable			\$ -	
			\$ -	
			\$ -	
			\$ -	
			\$ -	
TOTAL:				
JUSTIFICATION/COMMENTS:				

BUDGET JUSTIFICATION CAPITAL PROJECT DETAILS

Applicant: CBESS

Period: July 1, 2011 to June 30, 2012

FUNDING AMOUNT REQUESTED						
TOTAL PROJECT COST	ALL SOURCES OF FUNDS RECEIVED IN PRIOR YEARS		STATE FUNDS REQUESTED	OF FUNDS REQUESTED	FUNDING REQUIRED IN SUCCEEDING YEARS	
	FY: 2008-2009	FY: 2009-2010	FY:2011-2012	FY:2011-2012	FY:2012-2013	FY:2013-2014
PLANS	104000	65000	307806			
LAND ACQUISITION						
DESIGN			319000	43556		
CONSTRUCTION			873194	1351944	3863862	3417250
EQUIPMENT					654388	
Total	11000000	104,000	65,000	1,500,000	1,395,500	4,518,250
<p>JUSTIFICATION & COMMENTS: Community Based Education Support Services (Affiliated with Connections Public Charter School) seeks \$1.5 million to assist in the construction of a new campus on land leased from DLNR to move its high school in Phase I, and eventually its elementary and middle schools to the new site. Requested funds are primarily for planning, design and site preparation.</p>						

**DECLARATION STATEMENT
APPLICANTS FOR GRANTS AND SUBSIDIES
CHAPTER 42F, HAWAI'I REVISED STATUTES**

The undersigned authorized representative of the applicant acknowledges that said applicant meets and will comply with all of the following standards for the award of grants and subsidies pursuant to section 42F-103, Hawai'i Revised Statutes:

- (1) Is licensed or accredited, in accordance with federal, state, or county statutes, rules, or ordinances, to conduct the activities or provide the services for which a grant or subsidy is awarded;
- (2) Comply with all applicable federal and state laws prohibiting discrimination against any person on the basis of race, color, national origin, religion, creed, sex, age, sexual orientation, or disability;
- (3) Agree not to use state funds for entertainment or lobbying activities; and
- (4) Allow the state agency to which funds for the grant or subsidy were appropriated for expenditure, legislative committees and their staff, and the auditor full access to their records, reports, files, and other related documents and information for purposes of monitoring, measuring the effectiveness, and ensuring the proper expenditure of the grant or subsidy.

In addition, a grant or subsidy may be made to an organization only if the organization:

- (1) Is incorporated under the laws of the State; and
- (2) Has bylaws or policies that describe the manner in which the activities or services for which a grant or subsidy is awarded shall be conducted or provided.

Further, a grant or subsidy may be awarded to a non-profit organization only if the organization:

- (1) Has been determined and designated to be a non-profit organization by the Internal Revenue Service; and
- (2) Has a governing board whose members have no material conflict of interest and serve without compensation.

For a grant or subsidy used for the acquisition of land, when the organization discontinues the activities or services on the land acquired for which the grant or subsidy was awarded and disposes of the land in fee simple or by lease, the organization shall negotiate with the expending agency for a lump sum or installment repayment to the State of the amount of the grant or subsidy used for the acquisition of the land.

Further, the undersigned authorized representative certifies that this statement is true and correct to the best of the applicant's knowledge.

Community Based Education Services
(Typed Name of Individual or Organization)



January 25, 2011
(Date)

✓
Joan Derbyshire,
(Typed Name)

President
(Title)