

Department of Education
Summary on Early Learning System in Hawaii
Wednesday, February 17, 2010
State Capitol, Conference Room 309
4:00 p.m.

The Early Learning Task Force and the subsequent Early Learning Council has created a platform of collaborative partnerships with other early childhood organizations and entities. This summary cannot adequately address the quality of these partnerships and the benefit to the Department and the children it serves. The sustenance of these partnerships is critical to the work that needs to continue.

Early Learning Council (ELC)

The Department of Education (Department) recognizes the work of the ELC, from Fall 2008 to present, to develop and administer Hawaii's comprehensive early learning system for children from birth through kindergarten and beyond. The work of the ELC's work groups is vital to the coordination and cohesiveness throughout public and private early learning agencies. While the ELC is attached to the Department for administrative purposes only, the Department is actively involved in communicating and implementing an early learning framework to benefit all children.

Good Beginnings Alliance (GBA)

GBA and the Department have developed a long-standing relationship between the agencies to ensure that the young children of Hawaii are safe, healthy and ready to succeed. The Department recognizes the value GBA brings to the early learning system with its recommendations and commitment to building and strengthening the quality of early learning.

Hawaii Association for the Education of Young Children (HAEYC)

The Department appreciates the support that the HAEYC offers teachers of children from birth to age eight. Public school teachers have attended HAEYC annual conferences as a professional development opportunity to increase their awareness and knowledge of early learning researched-base practices, strategies, and activities. HAEYC workshops and seminars offer early childhood educators the opportunity to network and discuss early learning topics.

Hawaii Careers with Young Children (HCYC)

The Department also recognizes the resources HCYC makes available to early childhood educators. HCYC offers public school educators opportunities to advance their knowledge through quality professional development programs to increase the number of qualified early childhood educators teaching kindergarten.

Junior Kindergarten

Since the 2006-2007 school year, the Department continues to implement a two-tiered kindergarten system that allows junior kindergarten and kindergarten students' movement between tiers and into grade one based on assessments that are developmentally appropriate and performance-based. A kindergarten assessment toolkit, which assesses kindergarten

benchmarks according to different learning modalities such as visual, auditory, kinesthetic, etc., will be disseminated for teachers' use statewide in May 2010.

Linapuni's Early Education Center

Linapuni Elementary, located in the Kuhio Park Terrace Homes, is a demonstration site offering early childhood education to a class of twenty eager and energetic 4-year-old students since August 2009. A classroom teacher and an educational assistant support the children as they develop basic tools for literacy, numeracy, readiness for kindergarten, and lifelong success. Children and their families also participate in the program's Family-Child Time sessions as they learn and practice different ways to strengthen their families at home. Adults are also provided opportunities to strengthen their workforce-ready and career planning skills for their future success as a contributing community member. The center is supported with the collaborative efforts of other early childhood partners.

To: Representative Roy M. Takumi, Chair
Representative Lyla B. Berg., Vice Chair
HOUSE COMMITTEE ON EDUCATION

Senator Norman Sakamoto, Chair
Senator Michelle Kidani, Vice-Chair
SENATE COMMITTEE ON EDUCATION AND HOUSING

From: Elisabeth Chun, Executive Director
Good Beginnings Alliance

Date: Wednesday, February 17, 2010, 4:00 p.m.
Conference Room 309

RE: INFORMATIONAL BRIEFING ON STATUS OF EARLY LEARNING SYSTEM

In 2009, Hawaii's comprehensive early learning system suffered great losses. Young children and their families were significantly affected by cuts to early childhood development programs, especially those previously funded by the Departments of Health and Human Services.

Over the past year, many private funders and organizations including Good Beginnings Alliance (GBA) have dedicated funding and staff time to support the Early Learning Council (ELC) by serving on subcommittees, gathering data and information, reporting on federal legislation potentially impacting the ELC activities, and in general garnering community support for the vision of the ELC work. This has been a crucial time to keep the work of the public and private partnership going.

However, as much as we work together maintaining the planning for the early learning system; as private funders come to forward to assist families, the quality improvement and professional development work; and as we launch advocacy and public awareness outreach – our young children and their families are suffering and at risk of further losses.

This briefing asks the “status” question, and our perspective is – “not good.”

1) Status of the Early Learning System (Refer to Power Point)

- a) **Basic Services/Support for all young children**
- b) **Informal Supports** through Collaboration, provided for **children and families who may be at risk**
- c) **Services via school and community** programs for **children at risk**
- d) **More specialized services** for children with identified **special needs**
- e) **Most intensive and multiagency** services

Birth-3-Years Old Program Cuts

- Baby S.A.F.E. Programs- eliminated
- Healthy Start – \$1.2 million; 2 programs only
- Fetal Alcohol Spectrum Disorders - eliminated
- Family Planning - 25% reduction
- Early Intervention Services for Children with Biologically and Environmental Risks
- Perinatal Health Programs - 12% reduction
- Parental Support Programs - 9% reduction
- DHS child care/preschool subsidies - reduced

3-5-Years Old Program Cuts

- Preschool Developmental Screening Project- eliminated
- Keiki Care Project - eliminated
- Parental Support Programs - 9% reduction
- Family Planning - 25% reduction
- DHS subsidies for child care/preschool
 - Preschool Open Doors – 50% reduction in # children

2) Good Beginnings Alliance Support to the Early Learning Council

a) Direct Services Subcommittee/Framework

- i) Goal of subcommittee – Develop a pilot program for comprehensive early learning system direct services. Part of this work has been to describe this early learning system and its linkages to crucial support services for children and families.
- ii) ED of GBA Co-chair of Sub-Committee
- iii) Facilitate Data collection
 - (1) Demographics including # children, # programs in order to develop target areas for pilot designation,
 - (2) 2009 Hawaii State School Readiness Assessment (HSSRA)
- iv) Framework – assist with development of ELC Framework document to clearly depict goals of ELC, interdepartmental strategies, and indicators of progress.

b) Funding Subcommittee

- i) GBA is applying for a **Congressional Appropriation** to fund a pilot in two communities showing the implementation of a comprehensive early learning system. The pilot proposes to use the Direct Services Subcommittee recommendations for program, quality standards and targeted areas.

c) Data and Quality Assurance

- i) Support for connection of ELC work with University of Hawai`i P20/DOE longitudinal data system planning.
- ii) Facilitate development of Child Outcomes document for Hawaii – draft to be completed by July 2010.

d) Qualified Professionals Subcommittee

- i) Connect efforts of Hawai`i Careers for Young Children (HCYC) and P20 Partnership for Education/P-3 Initiative.
 - (1) Increase # of on-line early childhood education courses for practitioners.
 - (2) Increase attention to articulation needs between community colleges and Hawaii's other public and private higher education institutions.

- e) Public Awareness
 - i) Keiki Focus E Blasts
 - ii) Semiannual GBA Newsletter – focus on community leadership; early childhood investment
 - iii) Tracking Legislative Bills – transmit information to early childhood stakeholders
 - iv) Speaking to community groups to increase their knowledge and support for the ELC work (e.g., Junior League of Honolulu, Rotary Clubs, Chamber of Commerce)
 - v) Facilitate creation of *One Voice for Children* – to be led by a broad coalition of individual child advocates

3) **Economic Advocacy**

- a) Goal: Build economic argument for investing in ECE
- b) October 14, 2009 hosted Economic Leaders Summit on Early Childhood Investment**
 - i) Funded by Partnership for America’s Economic Success and Samuel N. and Mary Castle Foundation, W.K. Kellogg Foundation
- c) Follow-up Efforts –
 - i) Speakers Bureau of Business Leaders
 - ii) Continue bringing together business and policy leaders to engage in early childhood effort.
 - iii) Encourage development of a Pilot program to show efficacy of comprehensive early learning system.
 - iv) *One Voice for Children*

4) **Federal Efforts**

- a) Connecting and sharing pertinent info from **national EC-advocacy** organizations (e.g., Voices, Pre-K Now, National Women’s Law Center)
- b) Feedback loop with **Hawai`i Congressional Delegation**
- c) Submittal of **Appropriations Request** for Pilot Comprehensive Early Learning System

5) **Future Outlook**

- a) Facilitate RFP for federal \$500K (ARRA) grant for development of *State Advisory Council* for Early Childhood Education & Care
- b) Extension of Act 77 – Will this be necessary for submittal of State Advisory Council application?
- c) Federal *Early Learning Challenge Grant* a possible future source of funding
- d) EC advocacy in Gubernatorial Election (*One Voice for Children* Coalition)
- e) Federal appropriation request
- f) Estimated federal FY11 CCDBG funds for Hawaii - \$9,402,000 (increase of \$2,579,000)

For more information contact: Good Beginnings Alliance; phone: 531-5502;
 lchun@goodbeginnings.org

Good Beginnings Alliance Update on Early Learning System



Feb 17, 2010

Liz Chun

Overview

- **Young Children's Safety Net Shrinking**
- **Early Childhood Data**
- **Future Outlook**



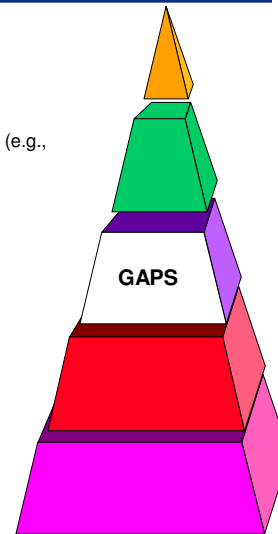
Young Children's Safety Net Shrinking

Birth-3-Years Old Program Cuts

- **Baby S.A.F.E. Programs- eliminated**
- **Healthy Start – \$1.2 million; 2 programs only**
- **Fetal Alcohol Spectrum Disorders - eliminated**
- **Family Planning - 25% reduction**
- **Early Intervention Services for Children with Biologically and Environmental Risks**
- **Perinatal Health Programs - 12% reduction**
- **Parental Support Programs - 9% reduction**
- **DHS child care/preschool subsidies - reduced**

Birth – 3-Years-Old Continuum of Services Levels

- 5. Intensive and multi-agency services** (e.g., *Intensive Behavioral Support Services*)
- 4. Specialized services from DOH & other agencies** (e.g., *Developmental Services, Nursing Services, Advanced Healthy Start*)
- 3. Services through community programs** (e.g., *Early Head Start, Healthy Start, Early Intervention Services for Environmentally & biologically at-risk children, DHS subsidies*)
- 2. Informal support through collaboration** (e.g., *Transition Services, Parent Support Groups*)
- 1. Basic support for ALL children** (e.g., *Newborn Hearing Screening*)



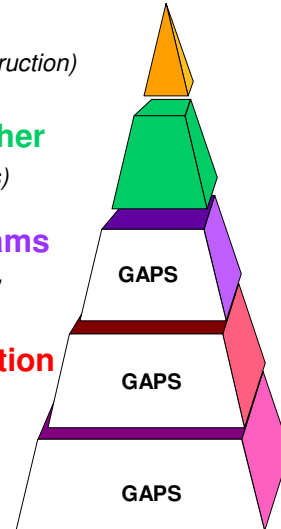
Young Children's Safety Net Shrinking

3-5-Years Old Program Cuts

- **Preschool Developmental Screening Project**
- **Keiki Care Project**
- **Parental Support Programs - 9% reduction**
- **Family Planning - 25% reduction**
- **DHS subsidies for child care/preschool**
 - **Preschool Open Doors – 50% reduction in # children**

3-5-Years Old Continuum of Services Levels

- 5. Intensive and multi-agency services**
(e.g., intensive learning centers, community based instruction)
- 4. Specialized services from DOH & other agencies** (e.g., DOE Section 504 Accommodations)
- 3. Services through community programs**
(e.g., Adjustment Program, DHS subsidies, Head Start, PS Screening Project, Keiki Care)
- 2. Informal support through collaboration**
(Health Services)
- 1. Basic support for ALL children**
(e.g., HSSRA, School STEPS Teams)



DOH Early Intervention Services Proposal

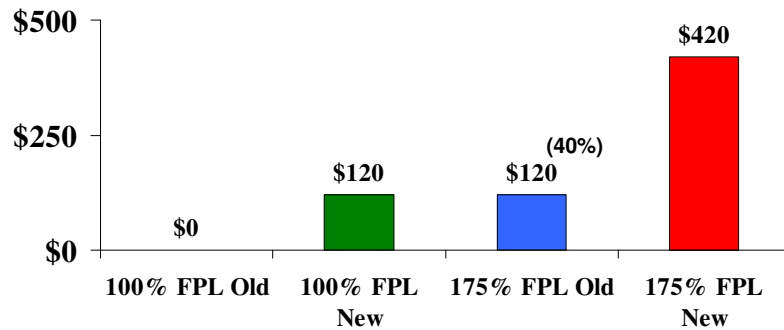
- **See Word Document**
 - **Proposed DOH eligibility criteria more stringent than DOE Preschool Special Education criteria**
-

DHS Subsidy Decreases for Child Care/Preschool

- **DHS child care/preschool subsidy funds rapidly running out; Utilization \$5.2 million per month**
 - **New parent co-pay rates effective Feb 1, 2010**
 - **DHS transferred \$7 million in TANF funds for temporary 4-month transition to eligible families**
 - **DHS contracts for transition program just approved**
 - **Turmoil for families, preschools, and family child care providers—awaiting full impact**
 - **FY11: Child care/preschool fund support for families less than previous years while demand growing.**
-

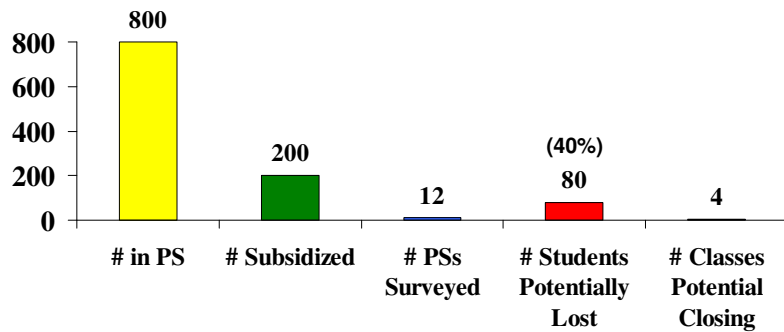
Sample Parent Co-Pay Increase

Family of 4 w/ \$600/month PS tuition



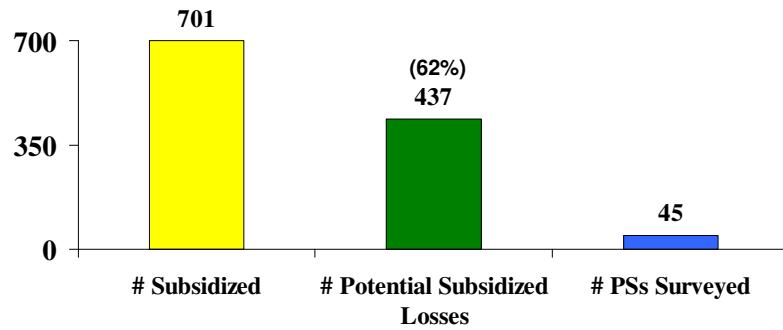
Kaua'i PS Impact

As of December 24, 2009



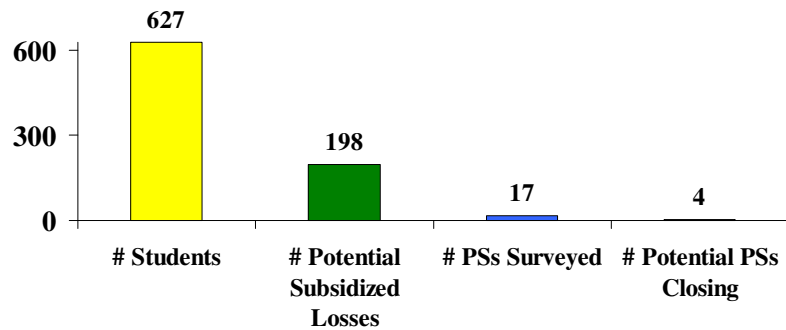
O`ahu PS Impact

As of December 24, 2009



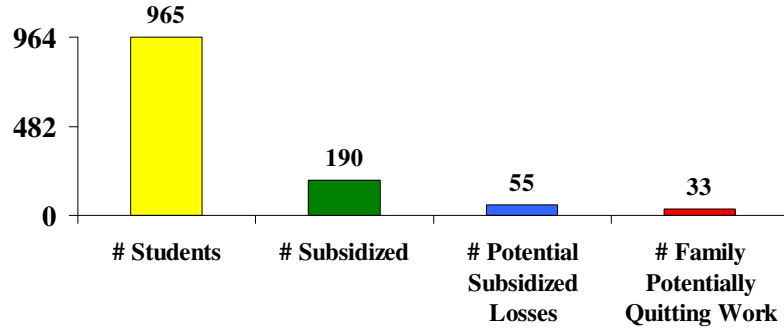
Hawai`i County PS Impact

As of December 24, 2009



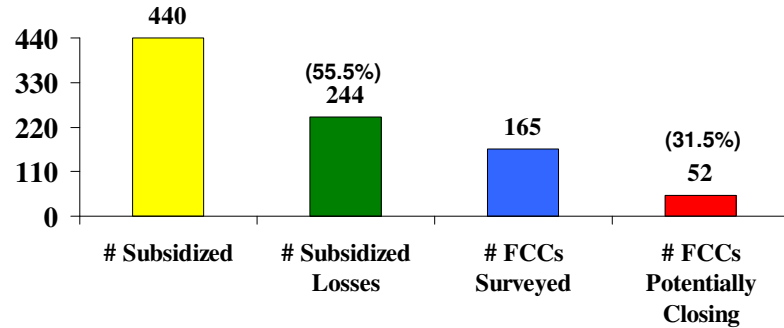
Maui County PS Impact

As of December 24, 2009



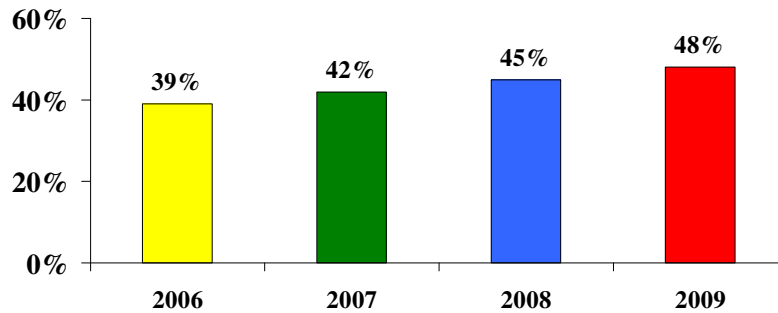
State FCC Impact

PATCH Data as of November 2009



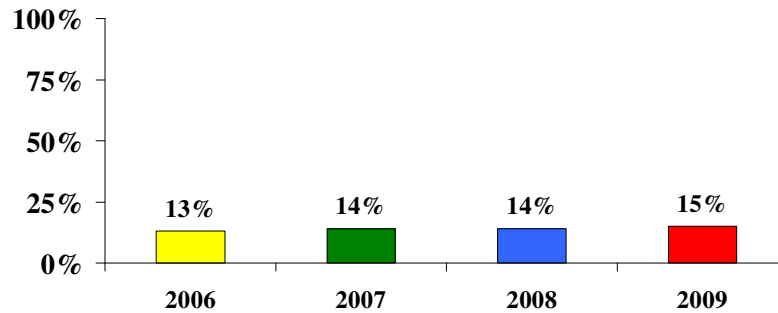
Early Childhood Data

% K. Students Free/Reduced Lunch



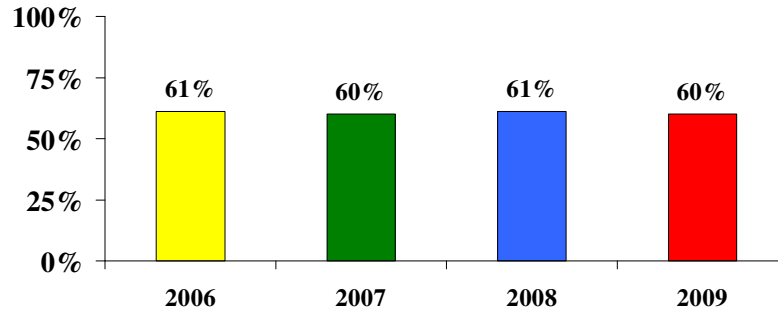
HSSRA Schools' Early Education Profile

% Students Non-Native English Speakers

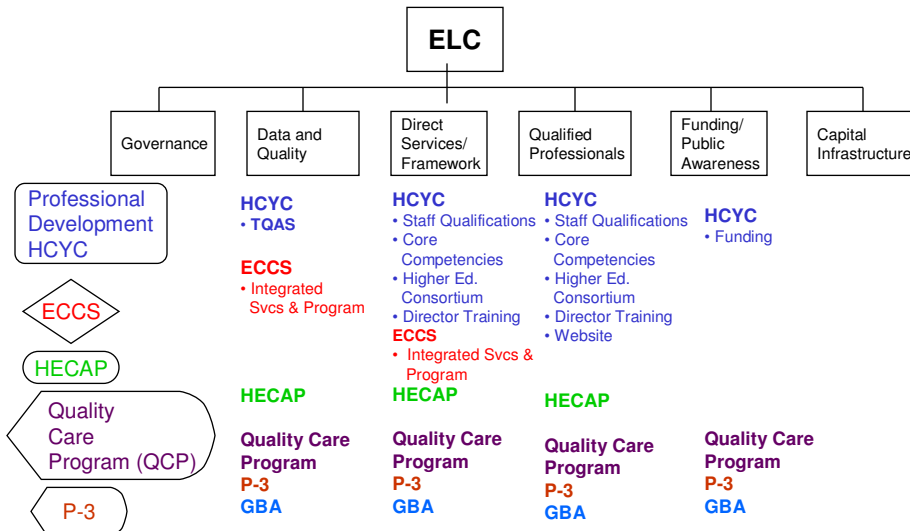


Children Ready for School

% Entering K w/ PS Experience



ELC+HCYC+ECCS+HECAP+QCP+P-3+GBA



Future Outlook

- **Facilitate RFP for federal \$500K grant for development of State Advisory Council for Early Childhood Education & Care**
 - **Extension of Act 77**
 - **Federal Early Learning Challenge Grant a possible future source of funding**
 - **EC advocacy in Gubernatorial Election (One Voice for Children Coalition)**
 - **Federal appropriation request**
 - **Estimated federal FY11 CCDBG funds - \$9.4M (+\$2.579M)**
-



Questions?



Good Beginnings Alliance Comparison of Eligibility Criteria for Current and Proposed DOH Part C IDEA With DOE Part B

Current State Definitions of Part C Eligibility	Proposed State Definitions of Part C Eligibility	DOE Eligibility Part B
<p>Delay in 1 or more of the following areas of development:</p> <ul style="list-style-type: none"> a. cognitive development b. physical development (including vision and hearing) c. communication development d. social or emotional development e. adaptive development. 	<p>1. 33% delay in chronological/adjusted age or 2 Standard Deviations below the norm in 1 area; or</p>	<p>1. Cognitive development and adaptive behavior are delayed equivalent to 1.5 Standard Deviations below the mean when compared with the standard score expected for the chronological age; or</p>
	<p>2. 25% delay in chronological/adjusted age or 1.5 Standard Deviations below the norm in 2 or more areas; or</p>	<p>2. One of the following areas is delayed 1.5 standard deviations below a standard score for:</p> <ul style="list-style-type: none"> a. Motor development, including fine motor, gross motor, sensory motor, and perceptual-motor development; b. Communication, including speech and language development; c. Academic development; d. Adaptive behavior; or
	<p>3. Informed clinical opinion by a multi-disciplinary team.</p>	<p>If assessment materials would not conclusively demonstrate eligibility as required under paragraphs (1) or (2), the team of qualified professionals and the parent may find the student eligible under the category of developmental delay if the team determines the student's patterns of learning deviate from age expectations across settings. The documentation of eligibility required by section 8-60-38 shall include a statement of the patterns of learning that deviate from age expectations across settings and the basis and method used in determining eligibility.</p>



CHILDCARE BUSINESS COALITION

Committed to Quality Education

To: Rep. Roy M. Takumi, Chair
House Committee on Education
Senator Norman Sakamoto, Chair
Senate Committee on Education and Housing

From: Christina Cox, Liaison
Childcare Business Coalition of Hawaii
808-941-9414 ext. 25 ccox@kcaapreschools.org

Date: 2/17/10, 4 p.m. Room 309

RE: Informational Briefing relating to the status of the early learning system in Hawaii and the impact of recent budget cuts

The Cole Academy

KCAA Preschools
of Hawaii

Kama'aina Kids

Rainbow Schools

Seagull Schools

Waianae Coast Early
Childhood Services

Waikiki Community
Center

The Childcare Business Coalition of Hawaii serves more than 4,000 children, ages 6 weeks-5 years, in more than 40 preschools on four islands. We employ more than 800 people and as a collective group our annual budgets exceed \$35 million in revenues. A map of our locations is included for your reference. Approximately 25% of our students are participants in the federally funded Childcare Connection (CCC) program or the State-funded Preschool Open Doors (POD) program. As a group, we account for almost 40% of the 3,000 students enrolled in private preschools statewide, who participate in the subsidy programs. As a group, we are committed to providing quality early education and care that is accessible to all children. We have worked side-by-side with DHS over the years to help ensure that Hawaii's most at-risk children have equal access to quality preschools. We have also been active participants in statewide task forces over the past six years including those related to Act 151 and 259 and now one of our members, Chuck Larson of Seagull Schools, sits on the Early Learning Council and represents center-based care.

Over the past few years members of the Childcare Business Coalition of Hawaii have aggressively invested hundreds of thousands of dollars in incentives provided by DHS and supported by federal dollars from the Child Care and Development Fund, to improve training and education levels of our teaching staff. We recognize the importance of qualified teaching staff and the key role that they play in helping low-income children to succeed in school and in life. We have improved program quality as measured by numbers of employees with some early childhood coursework and have enrolled increasing numbers of low-income children.

Liaison:
Christina Cox
(808) 941-9414

156C Hamakua Drive Kailua, Hawaii 96734

It is ironic that as the nation as a whole, including members of the Federal Reserve Bank and the Obama administration, have publicly recognized the research demonstrating the critical role that a quality early education plays in helping low-income children to succeed in school and in life, our State has had to make drastic funding reductions and fundamental design changes to the very program that has one of the greatest chances of actually helping to close the achievement gap for low-income children. **We are projecting a sharp decline in the total number of low-income children enrolled in early learning programs in the coming school year. We anticipate that this change will be long-term.**

The new sliding fee scale adopted by DHS February 1st, 2010, which reduces the level of tuition subsidy for all but the lowest income families, and which affects more than 3,000 (2,199 on Oahu; 310 Maui Co.; 595 Big Island; 166 Kauai) children in preschools statewide, is already causing parents to pull their children out of preschools on all islands. The application of the new sliding fee scale to the State-funded POD program (in addition to the federally funded CCC program) compounds the 50% funding reduction implemented this past year. DHS recently reported that the POD program may be terminated at the end of this fiscal year due to lack of general funds to support the program next year.

The short-term federal funding program that we have been working with the Department to set up since early December has experienced delays. Having made presentations to two separate directors groups during the past month, including the statewide Directors Group and Castle Colleagues (approximately 40 preschool directors from all islands) it is clear that many preschools cannot carry the debt for impacted families for the 1-2 additional months required to get the program started.

As an example of the impact of the funding reductions, KCAA Preschools, with seven preschools on Oahu, serves 125 DHS-subsidized children. **The total additional co-pay required of those 125 families as of February 1st is approximately \$38,000 PER MONTH. Most preschools do not have the ability to carry such debt.**

The short-term emergency funding was intended to give both parents and preschools time to adjust; parents to find a way to assume their new co-pays as of June or July (as much as \$600 more per month) or to find alternate care, and schools to delay lay-offs until the end of the school year. **Some parents may have to quit their jobs to care for their children and preschools are going to have to lay off staff. As President of KCAA, I have already issued advance notice of potential lay-offs to our 130 employees. Schools with high numbers of subsidized children may ultimately close.** We anticipate that a sub-group of schools will feel the impact by late March and the remainder of us, those who can wait out the limited assistance the short-term funding will provide, will feel the impact in June or July with significant declines in enrollment and additional lay-offs in August. The system that we have worked so hard to build over the past years is crumbling as we speak.

Most preschools in Hawaii have enjoyed strong wait lists for the past 6-7 years. Low-income families were able to count on assistance from Child Care Connection and Preschool Open Doors. **Moving forward, only the preschools in middle to high income areas will enjoy that status and the quality programs we have created in low-income areas will not survive, unless they significantly reduce their tuition and related operating costs, which, when translated into practice, means that they will reduce the quality of their programs. Low-income children will no longer have access to quality preschools.**

Recent cuts in DOH funding for preschool screening and related support programs for children with challenging behaviors has further impacted our ability to meet the needs of young children.

In reflecting on the work of the other groups formally representing Hawaii's early learning system at today's briefing, **I would ask that each group recognize and begin to work to understand the *seachange* that is occurring in our system at this time. I would ask that each group actively work with us to find ways to support those preschools that are committed to quality and that are negatively impacted by the current environment.** This may require that current plan designs be modified.

Hawaii's employers rely on our services to enable their employees to go to work every day knowing their children are in a safe and stimulating environment. Hawaii's early educators rely on us for stable employment and an opportunity to care for and challenge young minds to help our youngest citizens to reach their potential. Hawaii's keiki rely on us to provide them with a safe, nurturing and stimulating home away from home.

Hawaii has one of the highest rates of dual-income earners in the nation and any viable early learning system in Hawaii must include a strong private preschool system. If the work of the Early Learning Council and the Hawaii Careers with Young Children is to succeed, I ask that we all join hands together to support the very programs that these entities are designed to guide.

Thank you for the opportunity to testify.

CBC Locations Statewide

Description:

The Childcare Business Coalition was established in 1997

Members include:

The Cole Academy
 KCAA Preschools of Hawai'i
 Kama'aina Kids
 Rainbow Schools
 Seagull Schools
 Waianae Coast Early Childhood Services
 Waikiki Community Center



Together, we serve over 4,000 children, ages 6 weeks to five years, in different centers located state-wide. Approximately 20% of the families we serve receive tuition assistance from the Department of Human Services. In addition to that, our organizations individually solicit funds from local trusts and foundations as well as from family fundraisers to generate in excess of \$300,000 annually to provide tuition assistance to those families who do not qualify for State Assistance. CBC locations represent over 60% of the accredited locations which are open to the public in the state of Hawaii.

Our Mission:

To promote quality center-based early education and care which is accessible to all families with children ages six weeks to five years and to promote public policies which support that effort.