

**STATE OF HAWAII**  
**DEPARTMENT OF HAWAIIAN HOME LANDS**  
P.O. BOX 1879  
HONOLULU, HAWAII 96805

Testimony of Kaulana H.R. Park, Chairman  
Hawaiian Homes Commission

Before the Senate Committee on Ways and Means  
on the  
FY 2010-2011 Supplemental Budget Request  
of the Department of Hawaiian Home Lands

January 11, 2010

Chair Kim, Vice-Chair Tsutsui, and Members of the Senate Committee on Ways and Means:

Thank you for this opportunity to provide information on the Department of Hawaiian Home Lands (DHHL) Supplemental Budget request for fiscal year 2011.

The mission of the department is to manage the Hawaiian Home Lands Trust effectively and to develop and deliver land to native Hawaiians. We will partner with others toward developing self-sufficient and healthy communities. The trust, created by Congress through the Hawaiian Homes Commission Act of 1920 (Act), sets aside public lands to be used for the benefit of native Hawaiians (persons of at least 50% Hawaiian blood).

As required by the Admissions Act and as a compact with the United States, the State of Hawaii and the people of Hawaii adopted the Act as a provision of the State Constitution and agreed to faithfully carry out the spirit of the Act for the rehabilitation of the Hawaiian race. These trust responsibilities still remain today.

The department administers two (2) programs, HHL 602, Planning and Development for Hawaiian Homesteads, and HHL 625, Management and General Support for Hawaiian Homesteads. The objective of these two programs are to develop and manage the designated Hawaiian home lands to create more homesteads for native Hawaiians (as defined by the Hawaiian Homes Commission Act, 1920, as amended) and generate the revenues needed to administer the program. The department has requested in prior years that the two programs be consolidated as one program since the sole mission of the department is to place qualified native Hawaiians on Hawaiian home lands. No general fund support is provided by the State for the department's operations. DHHL is supported by its special and trust funds pursuant to the Act. Although the furloughs and retirement vacancies have reduced DHHL's human resource capacity, it does not

diminish our commitment to serving our beneficiaries. DHHL is reorganizing staffing for various activities to minimize potential productivity loss.

The Act provides direct benefits to native Hawaiians in the form of 99-year homestead leases that may be extended for a total of 199 years at an annual rental of \$1. The leases are for residential, agricultural, or pastoral purposes. The intent of the homesteading program is to increase the economic self-sufficiency of native Hawaiians through the provision of land.

Other benefits provided by the Act include financial assistance through direct loans or loan guarantees for home construction, home replacement or repair and for development of farms and ranches; the provision of technical assistance to farmers and ranchers; and the operation of water systems.

A new benefit that was piloted in 2004, and has since become an integral component of fulfilling our mission, is the establishment of our Home Ownership Assistance Program (HOAP). HOAP offers three (3) vehicles to address barriers that native Hawaiians may face in achieving homeownership or preserving their home. The first is Financial Literacy services, second Job Training and Placement, and finally Addiction Treatment Services. These services are free of charge to our beneficiaries and have developed into a \$1.3 million program, serving more than 2,000 beneficiaries statewide.

In addition to administering the homesteading program, the department is also authorized to lease land and to issue general leases, revocable permits and licenses for lands not suitable for or not now in homestead use. Revenues from income-producing lands are used to finance the department's operating costs and to support homestead development activities, including the payment of principal and interest on revenue bonds, the proceeds of which are used to develop homestead lands.

The department aggressively seeks external sources of financing with the objective of efficiently leveraging existing and future resources for development and loan financing activities. Partnerships with other governmental agencies and the business community are critical in achieving DHHL's capital improvement goals.

At the beginning of fiscal year 2009, the department faced tremendously high inflationary costs that tested all areas of its budget due to high energy costs. The high cost of energy has since subsided and has allowed DHHL to refocus on its strategic goals of placing its beneficiaries on Hawaiian home lands, while simultaneously repositioning our focus to address the inevitable resurgence of energy increases in the near future. DHHL believes that its program aligns itself to President-elect Obama's and Congress' focus on infrastructure development, job creation and energy sustainability and benefits the native Hawaiian community as well as the community at large.

DHHL views the current economic and fiscal conditions as a window of opportunity. DHHL is currently pursuing energy sustainability for all of its new homestead

developments and adopted a formal energy policy that will assist the State of Hawaii in achieving its energy initiatives. In addition we are actively pursuing increased federal funding support, increased leveraging of our resources through partnerships, expanding DHHL's capacity to generate revenues and identifying external sources of monies to fund DHHL programs.

While there are tremendous challenges in front of us, the department is positioned to play an integral part in bridging our State's economic downturn through significant CIP projects that will trigger private investment. We look forward to coordinating our efforts with the Legislature.

### Biennium Budget Request

#### Operating Budget Request for Fiscal Year 2011

DHHL is requesting a personnel cost reduction of \$894,977, 13.85% of salary cost, from its special and trust funds as a means to achieve targeted furlough savings. DHHL's administrative and operating cost is wholly funded by its special and trust funds.

In addition, DHHL is requesting a personnel cost reduction of \$124,052 to reflect the abolishment of three (3) special funded positions.

These requested adjustments will be funded from the Hawaiian Home Administration Account, a DHHL special fund, and the Hawaiian Home Operating Fund, a DHHL trust fund.

#### Capital Improvement Request for Fiscal Year 2011

DHHL is not requesting any supplemental CIP funds for Fiscal Year 2011.

#### Summary

We are most appreciative of the support given by the Legislature to our program throughout the years. We again thank the Committee for the opportunity to brief you on our supplemental budget request. We have prepared and submitted our written testimony in accordance with the format and briefing instructions provided by the House Finance and Senate Ways and Means Committees. We would be pleased to respond to any questions the committee may have.

Department of Hawaiian Home Lands  
 Department-wide Budget Summary

Table 1

Fiscal Year (FY) 2010				
Act 162/09 Appropriation (a)	Restriction (b)	Emergency Appropriation (c)	Total FY10 (d)	MOF
-	-	-	-	A
12,729,181	(706,718)	-	12,022,463	B
9,601,391	-	-	9,601,391	N
6,423,744	(551,827)	-	5,871,917	T
			-	U
			-	W
28,754,316	(1,258,545)	-	27,495,771	Total
Fiscal Year (FY) 2011				
Act 162/09 Appropriation (e)	Reductions (f)	Additions (g)	Total FY11 (h)	MOF
-	-	-	-	A
12,729,181	(626,761)		12,102,420	B
9,601,391	-		9,601,391	N
6,423,744	(392,268)		6,031,476	T
			-	U
			-	W
28,754,316	(1,019,029)	-	27,735,287	Total

Department of Hawaiian Home Lands  
Priority List of Functions

Table 2

Pri #	Description of Function	Activities	Prog ID(s)	Statutory Reference
1	To develop and deliver land and housing to native Hawaiian beneficiaries of the Hawaiian home lands trust.	Award homestead (Residential, Agricultural and Pastoral) leases to beneficiaries. Award of general leases. Provide assistance to lessees so they may obtain maximum utilization of their awards in keeping with the purpose for which those lands were leased.	HHL 602; HHL 625	Article XII, Section 1 of the State Constitution, Hawaiian Affairs; Hawaiian Homes Commission Act, 1920, as amended
2	To manage trust assets including land, water and other related sources.	Management of general leases and other land dispositions, water systems, maintenance of lands and environmental protection.	HHL 602; HHL 625	Article XII, Section 1 of the State Constitution, Hawaiian Affairs; Hawaiian Homes Commission Act, 1920, as amended
3	To provide direction and administrative support to staff that perform core activities	Human resources, accounting, planning, and auditing activities.	HHL 602; HHL 625	Article XII, Section 1 of the State Constitution, Hawaiian Affairs; Hawaiian Homes Commission Act, 1920, as amended

Department of Hawaiian Home Lands  
Resources by Program ID

Table 3

<u>Prog ID/Org</u>	<u>Program Title</u>	<u>As budgeted in Act 162/09 (FY11)</u>			<u>Governor's Submittal (FY11)</u>			<u>MOF</u>
		<u>Pos (P)</u>	<u>Pos (T)</u>	<u>\$\$\$</u>	<u>Pos (P)</u>	<u>Pos (T)</u>	<u>\$\$\$</u>	
HHL 602	Planning and Development for Hawaiian Homesteads	76.00		\$ 6,194,749	74.00		\$ 5,779,856	B
HHL 625	Management and General Support for Hawaiian Homesteads	33.00		\$ 6,534,432	32.00		\$ 6,322,564	B
HHL 602	Planning and Development for Hawaiian Homesteads	50.00		\$ 3,784,089	50.00		\$ 3,540,883	T
HHL 625	Management and General Support for Hawaiian Homesteads	26.00	5.00	\$ 2,639,655	26.00	5.00	\$ 2,490,593	T
HHL 602	Planning and Development for Hawaiian Homesteads	0.00	0	\$ 9,601,391	0.00	0	\$ 9,601,391	N

Department of Hawaiian Home Lands  
Current Year (FY10) Restrictions

Table 4

<u>Prog ID</u>	<u>Restriction \$\$\$</u>	<u>Impact</u>	<u>MOF</u>
HHL 602	\$ 344,172	The impact of the budget restrictions has required the DHHL to reduce its travel expenses by cutting down the number of staff that travels off island. Travel expenses have also been reduced by utilizing conference telephone calls to conduct meetings with neighbor island staff. Electricity costs have been lowered due to the two furlough days a month. There are spending restrictions on all electronic (computer, cellular phones, etc.) purchases unless approval by the Governor is granted. Personnel costs savings is derived through furlough days and 2 abolished positions	B
HHL 625	\$ 362,546	same as above; includes personnel cost savings from 1 abolished position	B
HHL 602	\$ 325,577	same as above	T
HHL 625	\$ 226,250	same as above	T

Department of Hawaiian Home Lands  
Proposed FY11 Reductions

Table 5

Type (CB / RIF/ OA)	Description of Reduction	Impact of Reduction	Prog ID	Pos (P)	Pos (T)	\$\$\$	MOF	Carry-over? (Y/N)
OA	Furlough Cost Reduction	Cost adjustment to meet 13.65% reduction of salary cost	HHL 602			\$ (331,788)	B	N
OA	Furlough Cost Reduction	Cost adjustment to meet 13.65% reduction of salary cost	HHL 602			\$ (170,921)	T	N
OA	Furlough Cost Reduction	Cost adjustment to meet 13.65% reduction of salary cost	HHL 625			\$ (243,206)	B	N
OA	Furlough Cost Reduction	Cost adjustment to meet 13.65% reduction of salary cost	HHL 625			\$ (149,062)	T	N
OA	Abolish Positions	Abolished 2 vacant positions in the Homestead Services Division. Position 38094, Office Assistant III on the island of Oahu and position 33086, Groundskeeper on the island of Hawaii	HHL 602	(2.00)		\$ (83,105)	B	N
OA	Abolish Positions	Abolished 1 vacant position in the Fiscal Office. Position 26382, Account Clerk III on the island of Oahu	HHL 625	(1.00)		\$ (40,947)	B	N



Department of Hawaiian Home Lands  
Proposed FY 11 Additions

Table 6

<u>Description of Addition</u>	<u>Prog ID</u>	<u>Pos (P)</u>	<u>Pos (T)</u>	<u>\$\$\$</u>	<u>MOF</u>
none					

Department of Hawaiian Home Lands  
Non-general funds (excluding Federal Funds)

Table 7

<u>Name of Fund</u>	<u>Unencumbered Cash Balance</u>	<u>MOF</u>	<u>Statutory Reference</u>
Hawaiian Home Loan Fund	\$ 1,704,683	B	Hawaiian Homes Commission Act, Section 213(b)
Hawaiian Home General Loan Fund	\$ 10,298,730	B	Hawaiian Homes Commission Act, Section 213(c)
Hawaiian Home Administration Account	\$ 2,482,887	B	Hawaiian Homes Commission Act, Section 213(f)
Hawaiian Home Administration Account	\$ 1,805,798	B	Hawaiian Homes Commission Act, Section 213(f)
DHHL Revenue Bond Special Fund	\$ 11,205,608	B	Hawaiian Homes Commission Act, Section 213.5
Hawaiian Home Lands Trust Fund	\$ 63,650,352	T	Hawaiian Homes Commission Act, Section 213.6
Hawaiian Home Operating Fund	\$ 611,157	T	Hawaiian Homes Commission Act, Section 213(e)
Hawaiian Home Operating Fund	\$ 664,357	T	Hawaiian Homes Commission Act, Section 213(e)
Hawaiian Home Operating Fund	\$ 8,983,995	T	Hawaiian Homes Commission Act, Section 213(e)
Hawaiian Home Receipts Fund	\$ 538,391	T	Hawaiian Homes Commission Act, Section 213(g)
Hawaiian Home Trust Fund	\$ 10,850,100	T	Hawaiian Homes Commission Act, Section 213(h)
Native Hawaiian Rehabilitation Fund (NHRF)	\$ 6,606,916	T	Hawaiian Homes Commission Act, Section 213(i)

Department of Hawaiian Home Lands  
Emergency Appropriation Requests

Table 8

<u>Prog ID</u>	<u>Description of Request</u>	<u>FTE</u>	<u>\$\$\$</u>	<u>MOE</u>
	None			

Department of Hawaiian Home Lands  
Budget Decisions

Table 9

Prog ID/Org	Description	MOF	Department Request			Budget & Finance			Governor's Decision		
			Pos (P)	Pos (T)	\$\$\$	Pos (P)	Pos (T)	\$\$\$	Pos (P)	Pos (T)	\$\$\$
HHL 602	Furlough Cost Reductions	B			\$ (331,788)			\$ (331,788)			\$ (331,788)
HHL 625	Furlough Cost Reductions	B			\$ (170,921)			\$ (170,921)			\$ (170,921)
HHL 602	Furlough Cost Reductions	T			\$ (243,206)			\$ (243,206)			\$ (243,206)
HHL 625	Furlough Cost Reductions	T			\$ (149,062)			\$ (149,062)			\$ (149,062)
HHL 602	Abolish Position(s)	B	(2.00)		\$ (83,105)	(2.00)		\$ (83,105)	(2.00)		\$ (83,105)
HHL 625	Abolish Position(s)	T	(1.00)		\$ (40,947)	(1.00)		\$ (40,947)	(1.00)		\$ (40,947)

Department of Hawaiian Home Lands  
Vacancy Report

Table 10

<u>Date of Vacancy</u>	<u>Position Title</u>	<u>Position Number</u>	<u>Exempt (Y/N)</u>	<u>Budgeted Amount</u>	<u>Actual Salary Last Paid</u>	<u>MOF</u>	<u>Prog ID</u>	<u>Authority to Hire (Y/N)</u>
08/01/05	CLERK STENOGRAPHER II	1437	N	26,700		B	HHL-602	N
02/01/07	HOMESTEAD DISTRICT SUPERVISOR I	13288	N	45,576		B	HHL-602	N
11/01/04	LAND AGENT V	26349	N	51,312		B	HHL-602	N
07/01/09	SECRETARY III	26468	N	51,936		B	HHL-602	N
12/31/08	HOMESTEAD ASSISTANT II	26916	N	51,936		B	HHL-602	N
01/01/08	MORTGAGE LOAN SPECIALIST	38085	N	42,132		B	HHL-602	N
02/16/07	HOMESTEAD APPLICATIONS CLERK II	38163	N	31,212		B	HHL-602	N
10/01/08	HOMESTEAD DISTRICT OPERATIONS MANAGER	38167	N	71,760		B	HHL-602	N
02/01/09	HOMESTEAD HOUSING AGENT	38168	N	56,172		B	HHL-602	N
07/01/09	HOMESTEAD HOUSING DEVELOPMENT MANAGER	38169	N	95,928		B	HHL-602	N
12/03/07	GENERAL LABORER I	113157	N	33,228		B	HHL-602	N
06/01/09	INFORMATION SPECIALIST IV	23054	N	64,920		B	HHL-625	N
01/01/08	PROGRAM BUDGET ANALYST IV	29872	N	45,576		B	HHL-625	N
09/01/09	ACCOUNT CLERK III	38092	N	28,836		B	HHL-625	N
12/31/2009	PRIVATE SECRETARY III	100004	Y	63,204		B	HHL-625	N
03/01/00	DELINQUENT LOAN COLLECTION ASSISTANT	100486	Y	33,756		B	HHL-602	N
06/30/07	HHL APPLICATIONS OFFICER	102957	Y	42,132		T	HHL-602	N
11/30/09	HHL Land Issues Officer	106119	Y	85,428		T	HHL-625	N
06/25/09	HHL CLERK IV	106191	Y	27,756		T	HHL-602	N
07/16/00	HHL EQUIPMENT OPERATOR II	106408	Y	38,004		B	HHL-602	N
06/16/94	HHL EQUIPMENT OPERATOR II	106418	Y	38,436		B	HHL-602	N
08/01/08	HOMESTEAD HOUSING SPECIALIST II	106169	Y	45,576		B	HHL-602	N
04/01/09	HHL CLERK TYPIST II	102353	Y	25,668		B	HHL-602	N
11/29/97	HHL ENGINEER III	102941	Y	45,576		T	HHL-602	N
12/01/95	APPRAISAL/TECHNICAL SERVICES MANAGER	106415	Y	62,424		T	HHL-602	N
07/14/07	HHL PERSONNEL CLERK III	106420	Y	26,700		T	HHL-625	N
08/20/03	HHL ACCOUNTANT II	101621	Y	38,988		T	HHL-625	N

Department of Hawaiian Home Lands  
Vacancy Report

Table 10

<u>Date of Vacancy</u>	<u>Position Title</u>	<u>Position Number</u>	<u>Exempt (Y/N)</u>	<u>Budgeted Amount</u>	<u>Actual Salary Last Paid</u>	<u>MOF</u>	<u>Prog ID</u>	<u>Authority to Hire (Y/N)</u>
04/01/09	CLERK TYPIST II	106793	Y	25,668		T	HHL-625	N
02/21/08	DHHL POLICY & PROGRAM ANALYST	106111	Y	55,500		T	HHL-625	N
01/13/09	HHL PLANNER V	102939	Y	75,960		T	HHL-625	N

Department of Hawaiian Home Lands  
Personnel Separations

Table 11

<u>Prog ID/Org</u>	<u>Position Number</u>	<u>Perm/Temp</u>	<u>MOF</u>	<u>Position Title</u>	<u>Budgeted FTE</u>	<u>Budgeted Salary</u>	<u>Actual FTE</u>	<u>Actual Salary</u>	<u>BU Code</u>	<u>SR Level</u>	
HHL-602	106191	P	T	HHL Clerk IV	100		100	27,756	3	SR-10	
HHL-602	26468	P	B	Secretary III	100		100	51,936	3	SR-16	
HHL-602	38169	P	B	Homestead Hsg Development Mgr	100		100	95,928	35	EM-05	
HHL-602	112228	T	T	Student Helper II	47.5	8	47.5	8	0	0	
HHL-602	26916	P	B	Homestead Assistant II	100		100	51,936	3	SR-15	
HHL-602	38094	P	B	Office Assistant III	100		100	25,668	3	SR-8	
HHL-602	38167	P	B	Homestead District Operations Mgr	100		100	89,208	35	EM-05	
HHL-625	102954	P	T	HHL Grants Specialist	100		100	60,024	13	SR-24	
HHL-625	100570	T	T	Student Helper II	47.5	8	47.5	8	0	0	
HHL-625	102939	P	T	HHL Planner V	100		100	75,906	13	SR-24	
HHL-602	38168	P	B	Homestead Housing Agent	100		100	56,172	3	SR-20	
HHL-625	101618	T	T	Student Helper II	47.5	8	47.5	8	0	0	
HHL-625	100050	P	B	Private Secretary II	100		100	56,172	63	SR-22	
HHL-602	112745	T	T	Student Helper II	100	8	100	8	0	0	
HHL-602	103194	T	T	Student Helper II	100	8	100	8	0	0	
HHL-625	23054	P	B	Information Specialist IV	100		100	64,920	13	SR-22	
HHL-625	100385	P	T	HHL Planner V							not DHHL
HHL-602	33086	P	B	Groundskeeper I	100		100	32,856	1	BC-02	
HHL-625	17696	P	B	Secretary I	100		100		63	SR-12	not DHHL
HHL-625	13274	P	B	Secretary I	100		100	30,036	3	SR-12	

Department of Hawaiian Home Lands  
New Hires

Table 12

<u>New Hire Effective</u> <u>Date:</u>	<u>Prog ID/Org</u>	<u>Position</u> <u>Number</u>	<u>Perm/</u> <u>Temp</u>	<u>MOF</u>	<u>Position Title</u>	<u>Budgeted</u> <u>FTE</u>	<u>Budgeted</u> <u>Salary</u>	<u>Actual</u> <u>FTE</u>	<u>Actual Salary</u>	<u>BU Code</u>	<u>SR Level</u>
1/26/2009	HHL-625	116927	P	T	HHL Secretary III	100		100	58,440	3	SR-16
5/1/2009	HHL-602	106191	P	T	HHL Clerk IV	100		100	27,756	3	SR-8
6/5/2009	HHL-625	13310	P	B	Account Clerk II	100		100	25,668	3	SR-9
3/16/2009	HHL-602	112560	T	T	Student Helper II	47.5	8	47.5	8	0	0
8/26/2008	HHL-602	112228	T	T	Student Helper II	47.5	8	47.5	8	0	0
12/16/2008	HHL-625	100940	P	T	HHL Planner V	100		100	69,996	13	SR-24
4/14/2009	HHL-602	106161	P	B	HHL Clerk Typist II	100		100	25,668	3	SR-8
8/1/2008	HHL-602	102385	P	T	Special Asst, HHL Hsg	100		100	85,428	73	SR-28
7/1/2008	HHL-602	38094	P	B	Office Assistant III	100		100	25,668	3	SR-8
7/1/2008	HHL-625	102938	P	T	Student Helper II	47.5	8	47.5	8	0	0
7/25/2008	HHL-602	106417	P	T	HHL General Laborer I	100		100	32,856	1	BC-02
6/29/2009	HHL-602	102937	P	T	HHL Clerk Typist II	100		100	27,756	3	SR-8
3/23/2009	HHL-625	102944	P	T	HHL Legislative Analyst	100		100	51,312	13	SR-22
8/13/2008	HHL-602	102450	P	B	Homestead Hsg SpcIt IV	100		100	57,720	13	SR-22
7/8/2008	HHL-625	101618	T	T	Student Helper II	47,5	8	47.5	8	0	0
5/20/2009	HHL-625	102959	P	T	HHL Planner V	100		100	47,412	13	SR-24
8/19/2008	HHL-625	100533	P	B	HHL Account Clerk III	100		100	28,836	3	SR-11
8/14/2008	HHL-602	101715	P	T	Homestead Dev Coor	100		100	46,176	3	SR-18
8/25/2008	HHL-602	102943	P	T	HHL General Laborer I	100		100	32,856	1	BC-02
6/17/2009	HHL-602	104178	T	T	Student Helper II	47.5	8	47.5	8	0	0
4/14/2009	HHL-625	108406	T	T	Student Helper II	47.5	8	47.5	8	0	0
7/8/2008	HHL-625	110700	T	T	Student Helper II	47.5	8	47.5	8	0	0
8/14/2008	HHL-602	112745	T	T	Student Helper II	47.5	8	47.5	8	0	0
8/20/2008	HHL-602	103194	T	T	Student Helper II	47.5	8	47.5	8	0	0
4/23/2009	HHL-602	113024	T	T	Student Helper II	47.5	8	47.5	8	0	0
3/3/2009	HHL-625	100570	T	T	Student Helper II	47.5	8	47.5	8	0	0
2/17/2009	HHL-625	117343	T	T	HHL Personnel Clerk V	100		100	31,212	63	SR-13
12/1/2008	HHL-602	28720	P	B	Supervising Land Agent	100		100	55,500	23	SR-26



Department of Hawaiian Home Lands  
Reduction in Force (RIF) Actions

Table 13

<u>RIF Code</u>	<u>Prog ID/Org</u>	<u>RIF Action</u>	<u>Position ##</u>	<u>Position Title</u>	<u>MOF</u>	<u>FTE</u>	<u>Current Comp Rate</u>	<u>Position Salary Decrease</u>	<u>Position Salary Increase</u>	<u>Comp Freq (Mo/Hr)</u>	<u>SR Level</u>	<u>BU</u>	<u>Perm/ Temp</u>	<u>Placement Action</u>	<u>Reason</u>
		None													

Department of Hawaiian Home Lands  
Expenditures Exceeding Federal Fund Ceiling

Table 14

<u>Prog ID</u>	<u>Appropriation Ceiling</u>	<u>Ceiling Increase</u>	<u>Date of Increase</u>	<u>Reason for Exceeding Ceiling</u>	<u>Recurring (Y/N)</u>	<u>GF Impact (Y/N)</u>	<u>ARRA?</u>
		None					

Department of Hawaiian Home Lands  
 Intradepartmental Transfers

Table 15

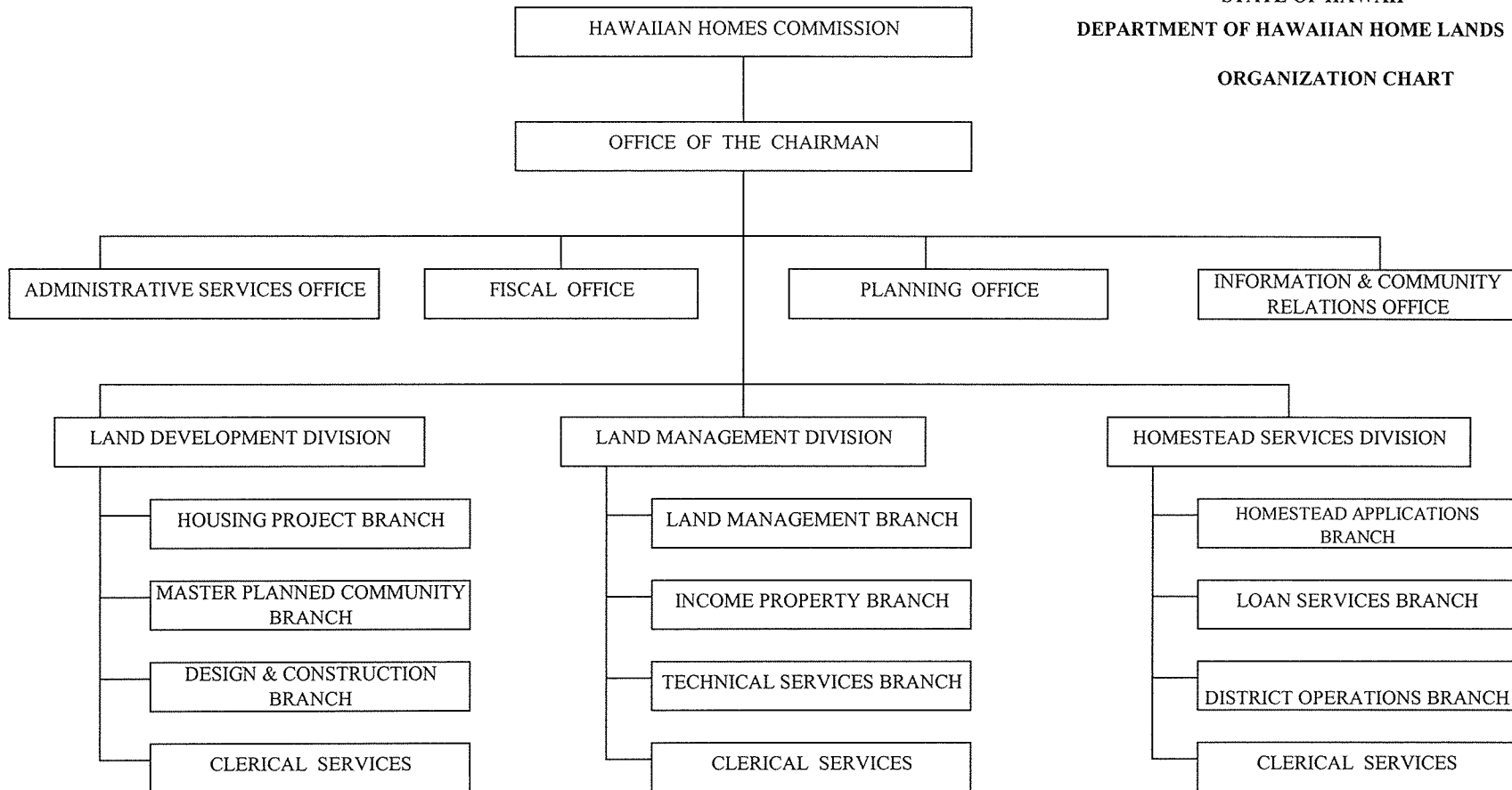
<u>From Prog ID</u>	<u>To Prog ID</u>	<u>Amount Transferred</u>	<u>Date of Transfer</u>	<u>Reason for Transfer</u>	<u>Recurring (Y/N)</u>
		None			

Department of Hawaiian Home Lands  
CIP Summary

Table 16

<u>Priority</u>	<u>Project Title</u>	<u>\$\$\$</u>	<u>MOF</u>
None			

STATE OF HAWAII  
DEPARTMENT OF HAWAIIAN HOME LANDS  
ORGANIZATION CHART



HAWAIIAN HOMES COMMISSION

STATE OF HAWAII  
DEPARTMENT OF HAWAIIAN HOME LANDS

OFFICE OF THE CHAIRMAN

Chairman, HHC

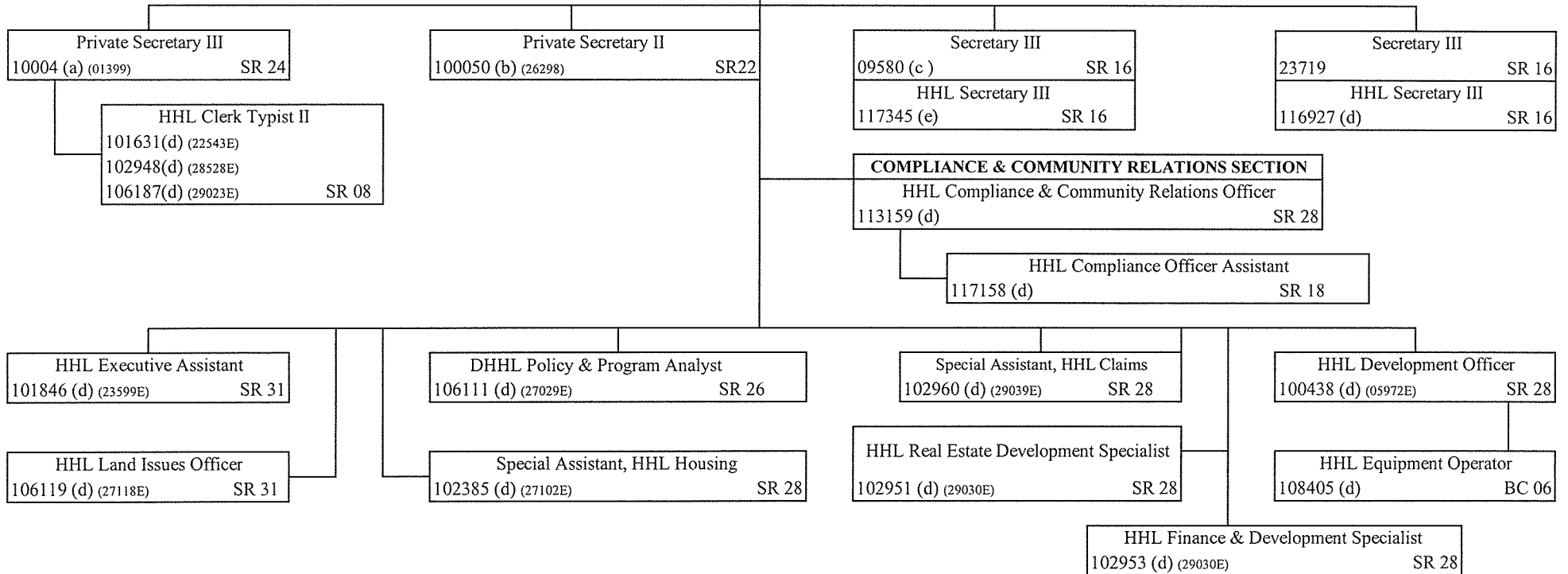
100360 (04561E) (--)

Deputy to the Chairman

100193 (00492E) (--)

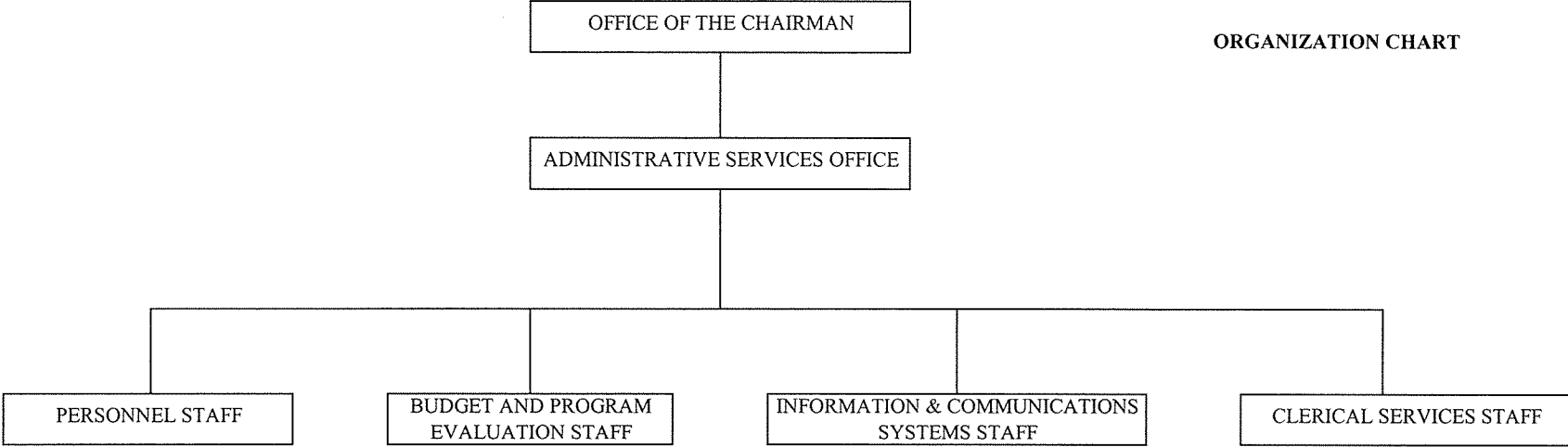
OFFICE OF THE CHAIRMAN

POSITION ORGANIZATION CHART



- (a) Private Secretary to the Chairman
- (b) Private Secretary to the Deputy to the Chairman
- (c) Secretary to the Hawaiian Homes Commission
- (d) Temporary exempt position
- (e) This position to provide coverage until the permanent position can be filled

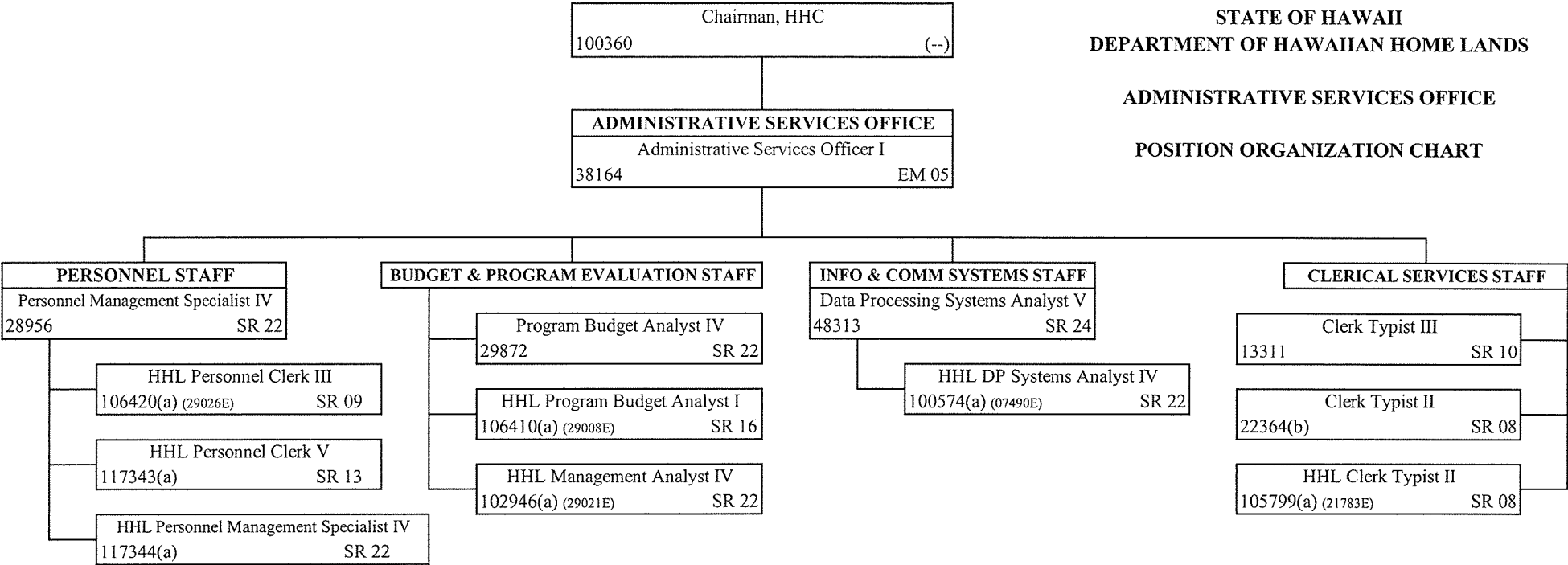
STATE OF HAWAII  
DEPARTMENT OF HAWAIIAN HOME LANDS  
ADMINISTRATIVE SERVICES OFFICE  
ORGANIZATION CHART



STATE OF HAWAII  
DEPARTMENT OF HAWAIIAN HOME LANDS

ADMINISTRATIVE SERVICES OFFICE

POSITION ORGANIZATION CHART

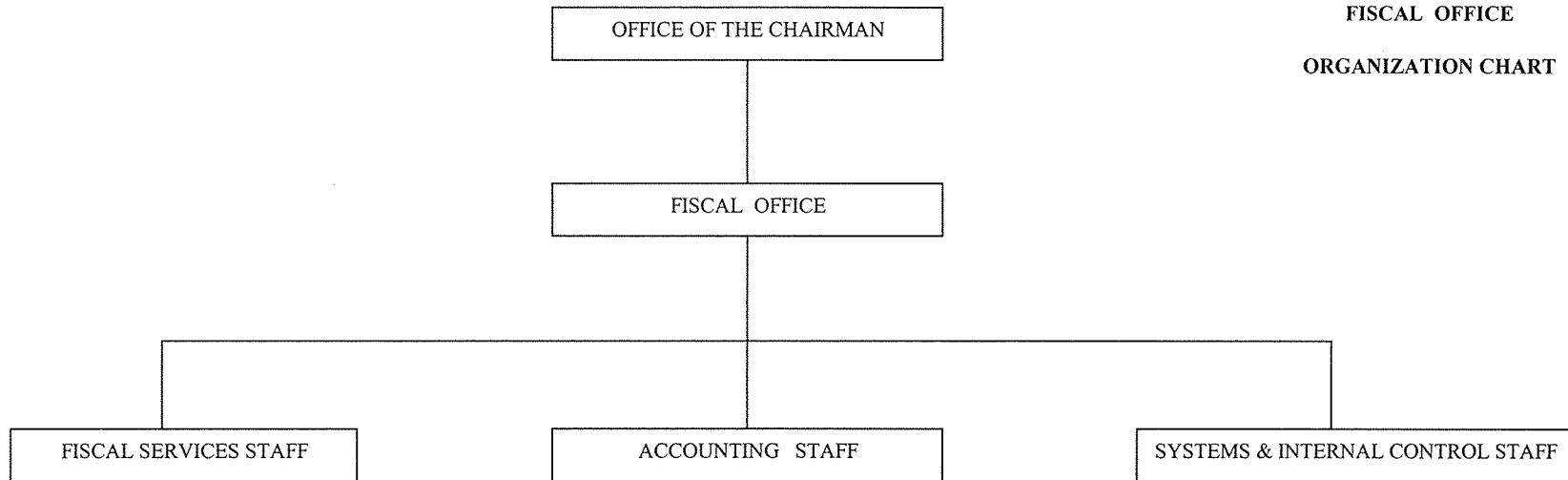


(a) Temporary exempt position  
(b) To be converted to a Secretary I position  
(SR 12) authorized by Act 328, SLH 1997



STATE OF HAWAII  
DEPARTMENT OF HAWAIIAN HOME LANDS

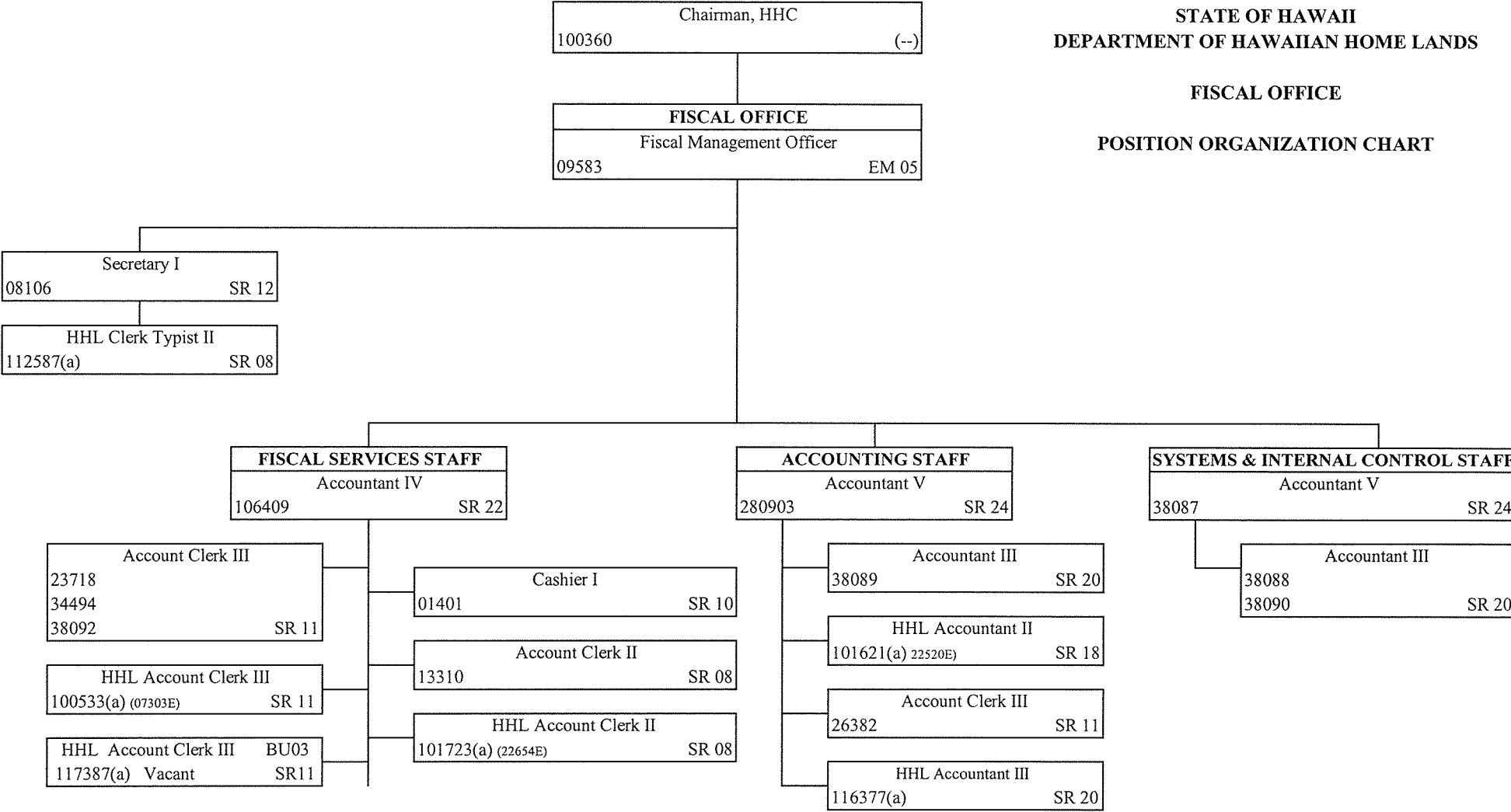
FISCAL OFFICE  
ORGANIZATION CHART



STATE OF HAWAII  
DEPARTMENT OF HAWAIIAN HOME LANDS

FISCAL OFFICE

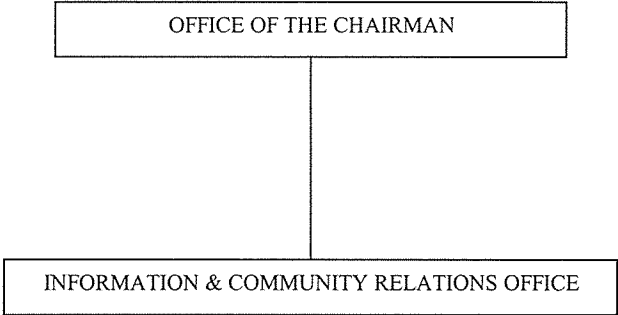
POSITION ORGANIZATION CHART



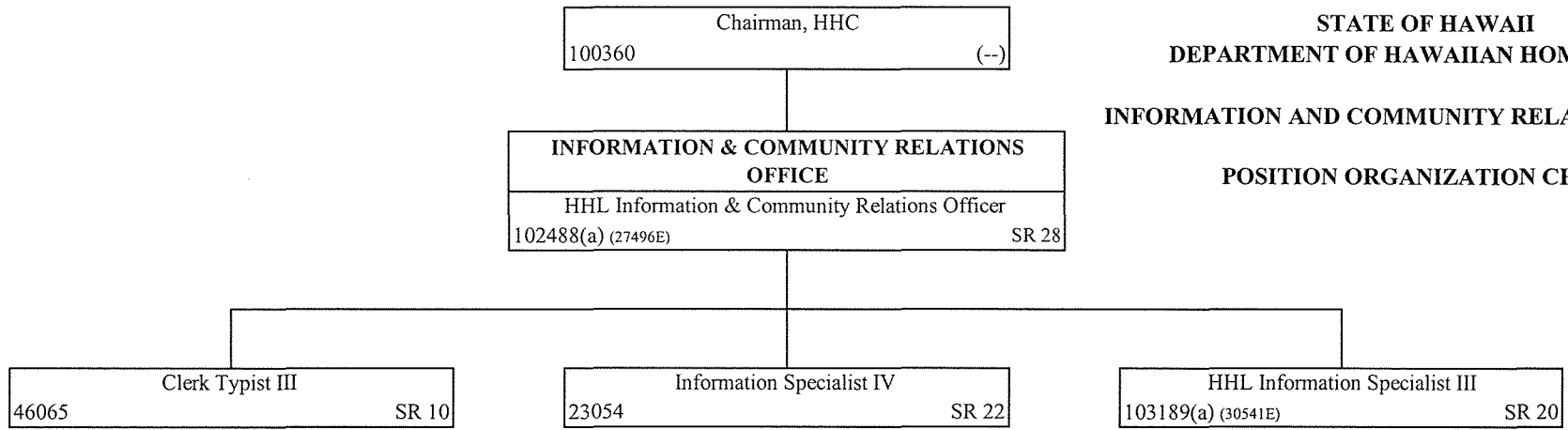
(a) Temporary exempt position

STATE OF HAWAII  
DEPARTMENT OF HAWAIIAN HOME LANDS  
INFORMATION & COMMUNITY RELATIONS OFFICE

ORGANIZATION CHART



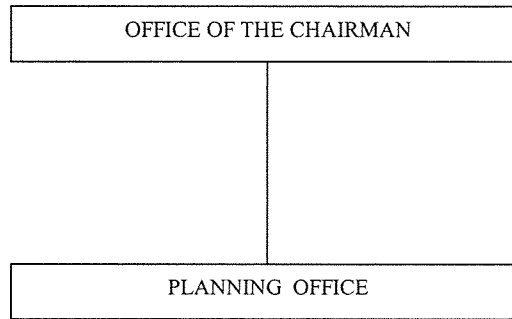
STATE OF HAWAII  
 DEPARTMENT OF HAWAIIAN HOME LANDS  
 INFORMATION AND COMMUNITY RELATIONS OFFICE  
 POSITION ORGANIZATION CHART



(a) Temporary exempt position

**STATE OF HAWAII  
DEPARTMENT OF HAWAIIAN HOME LANDS**

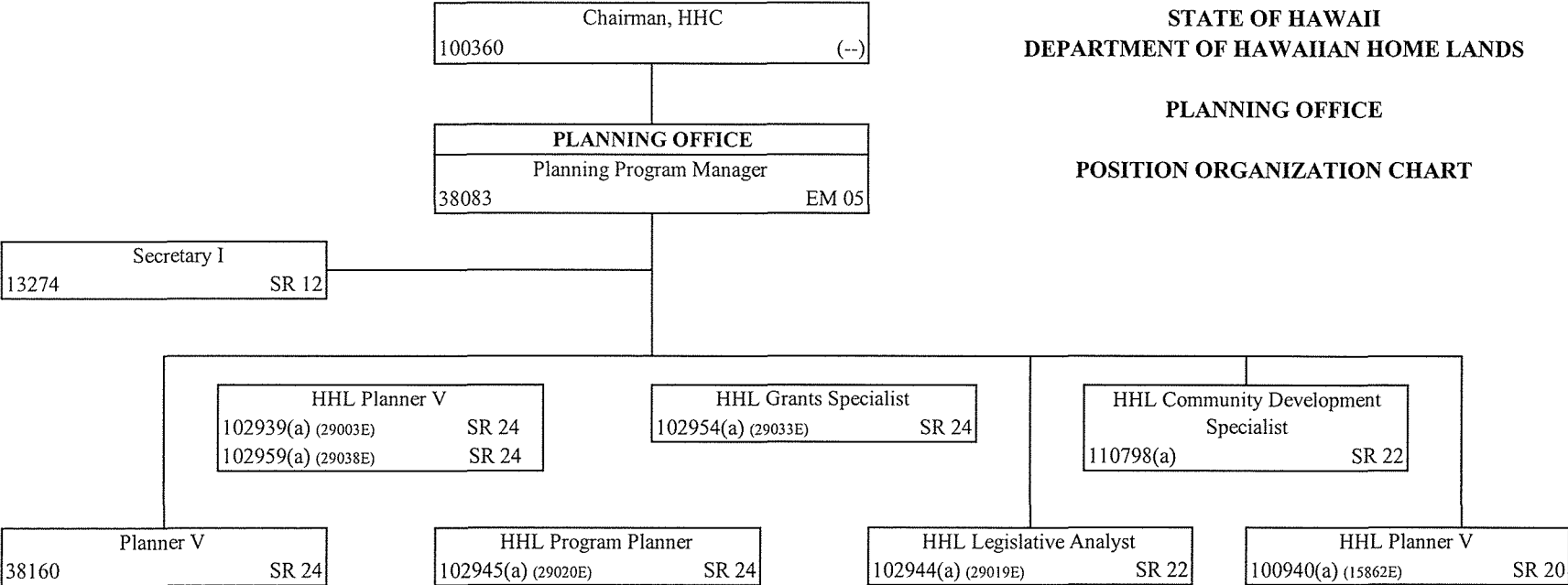
**PLANNING OFFICE  
ORGANIZATION CHART**



STATE OF HAWAII  
DEPARTMENT OF HAWAIIAN HOME LANDS

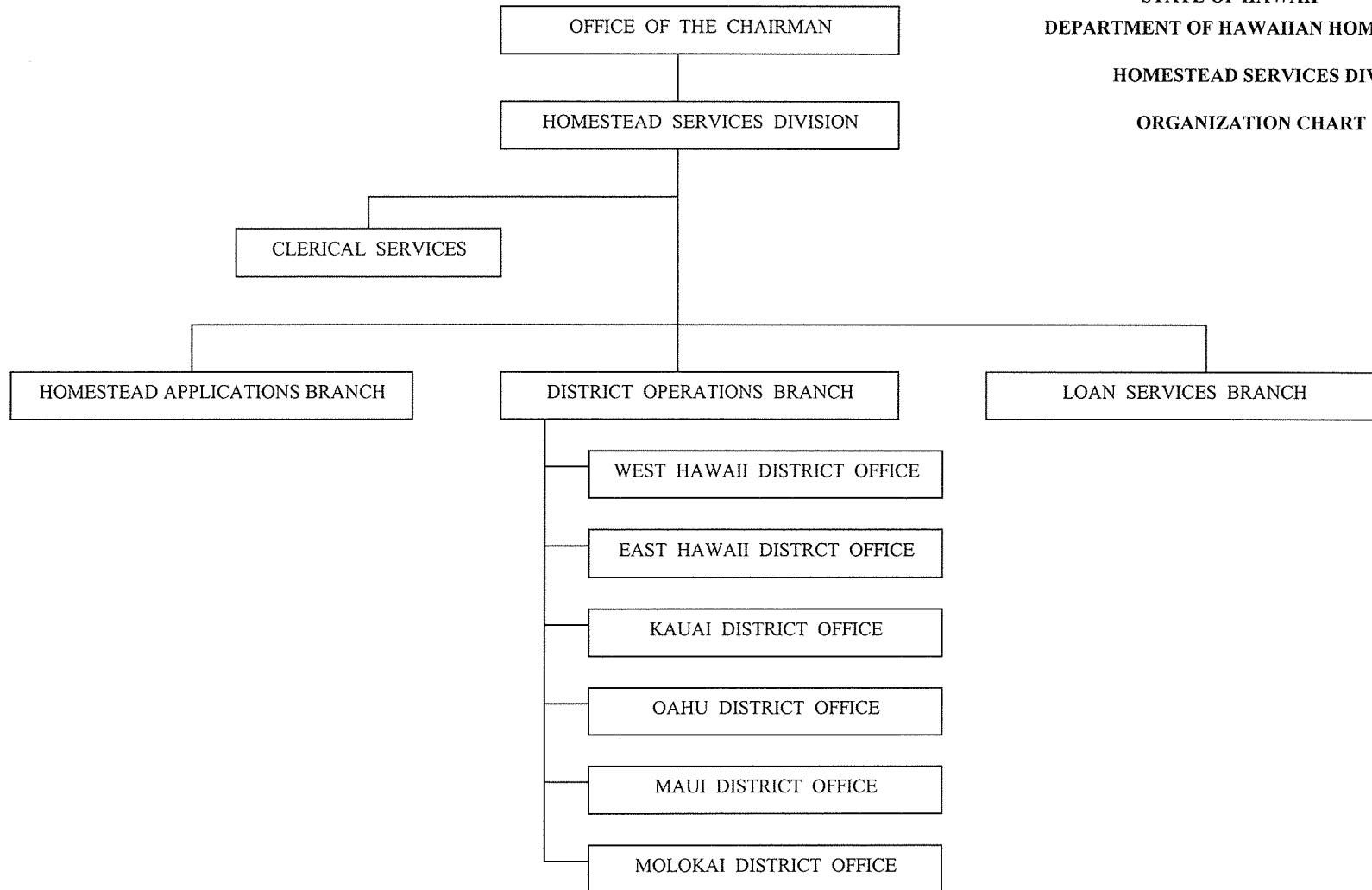
PLANNING OFFICE

POSITION ORGANIZATION CHART



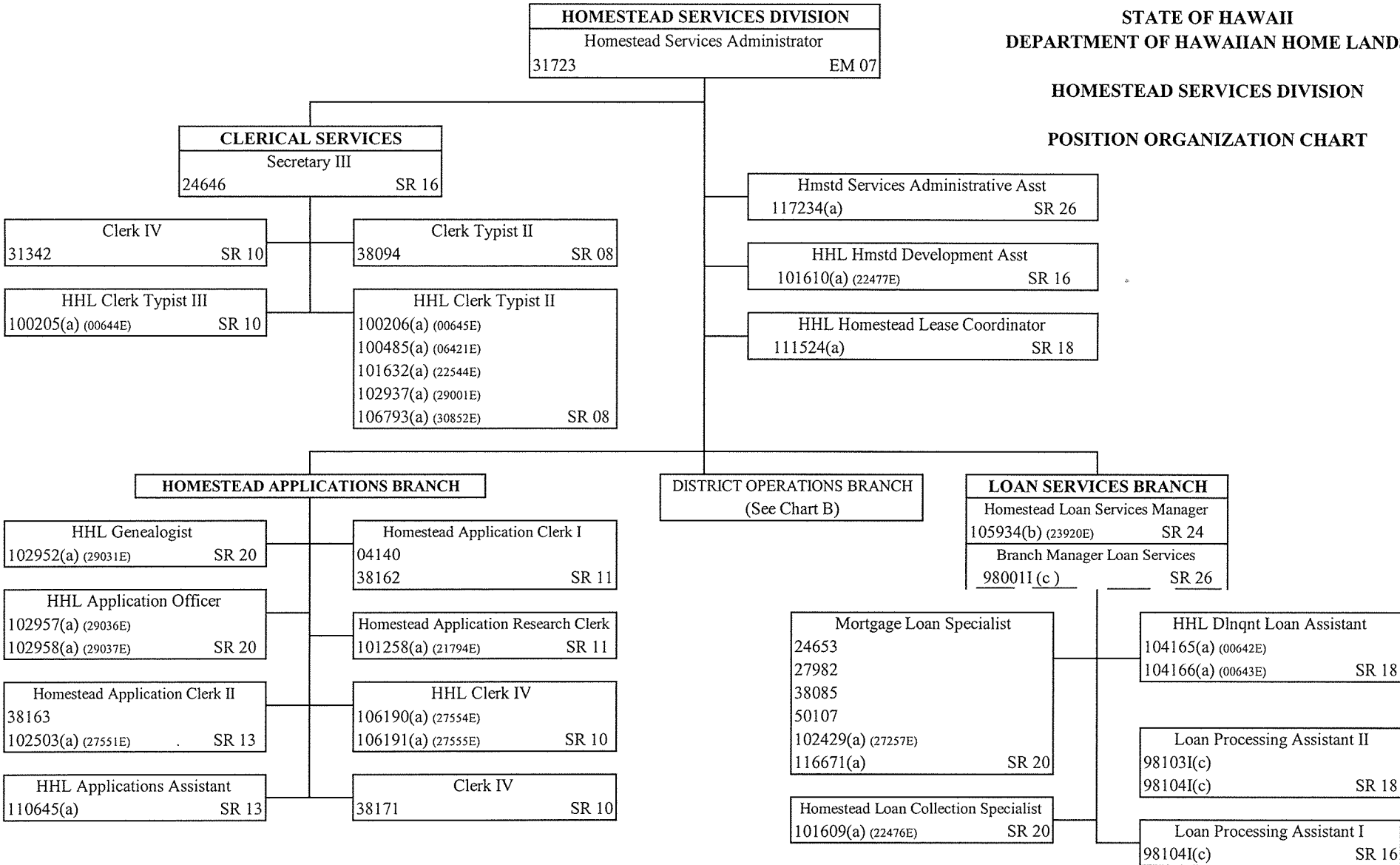
(a) Temporary exempt position

STATE OF HAWAII  
DEPARTMENT OF HAWAIIAN HOME LANDS  
HOMESTEAD SERVICES DIVISION  
ORGANIZATION CHART



HOMESTEAD SERVICES DIVISION

POSITION ORGANIZATION CHART



(a) Temporary exempt position  
 (b) Temporary exempt position to be abolished when permanent position authorized by Act 92, SLH 1986, is classified and filled  
 (c) Authorized by Act 289, SLH 1993, but not as yet classified

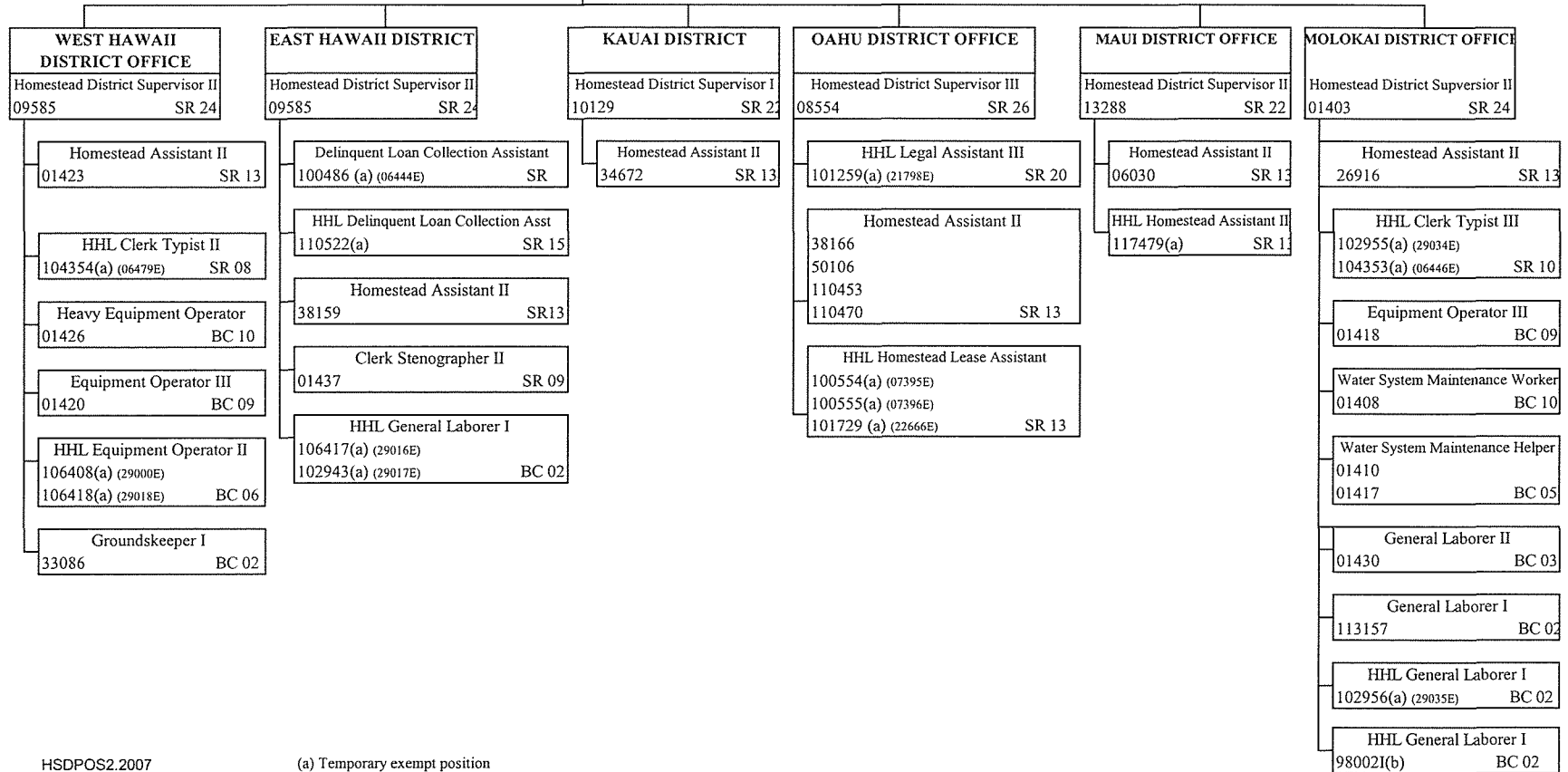


**HOMESTEAD SERVICES DIVISION**  
 Homestead Services Administrator  
 31723 EM 07

**DISTRICT OPERATIONS BRANCH**  
 Homestead District Operations Manager  
 38167 EM 05

**STATE OF HAWAII**  
**DEPARTMENT OF HAWAIIAN HOME LANDS**

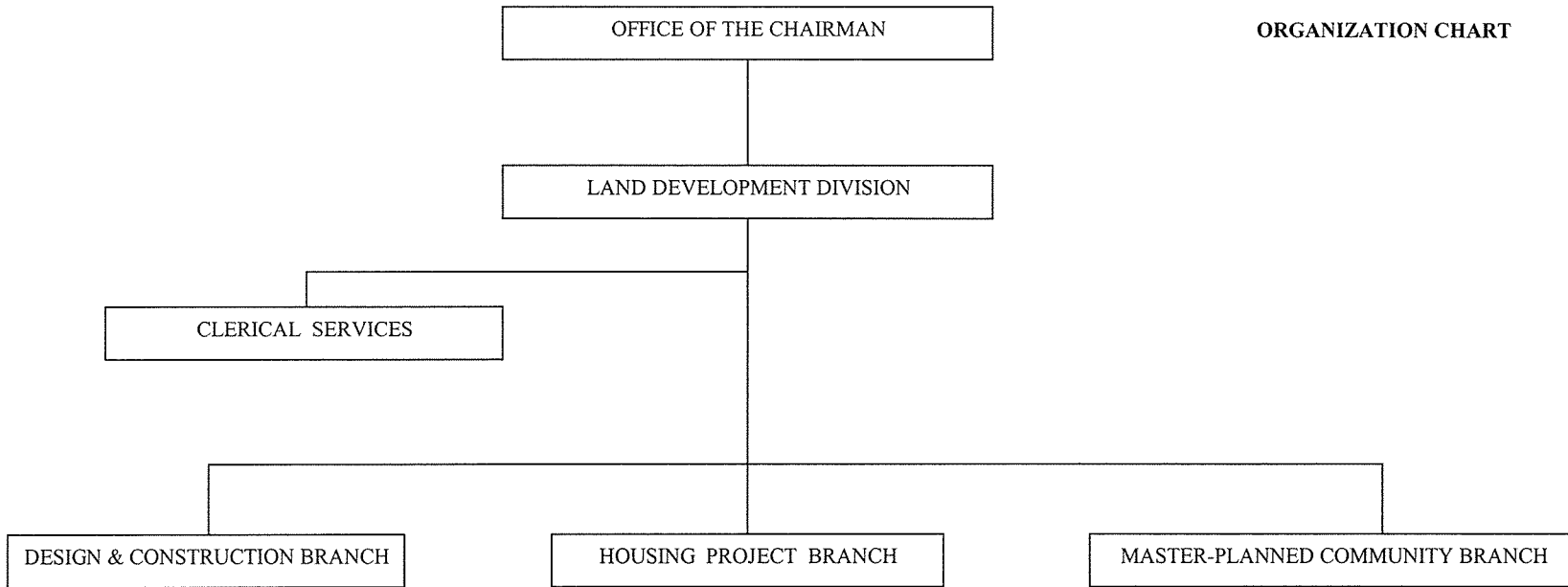
**HOMESTEAD SERVICES DIVISION**  
**DISTRICT OPERATIONS BRANCH**  
**POSITION ORGANIZATION (CHART B)**



HSDPOS2.2007

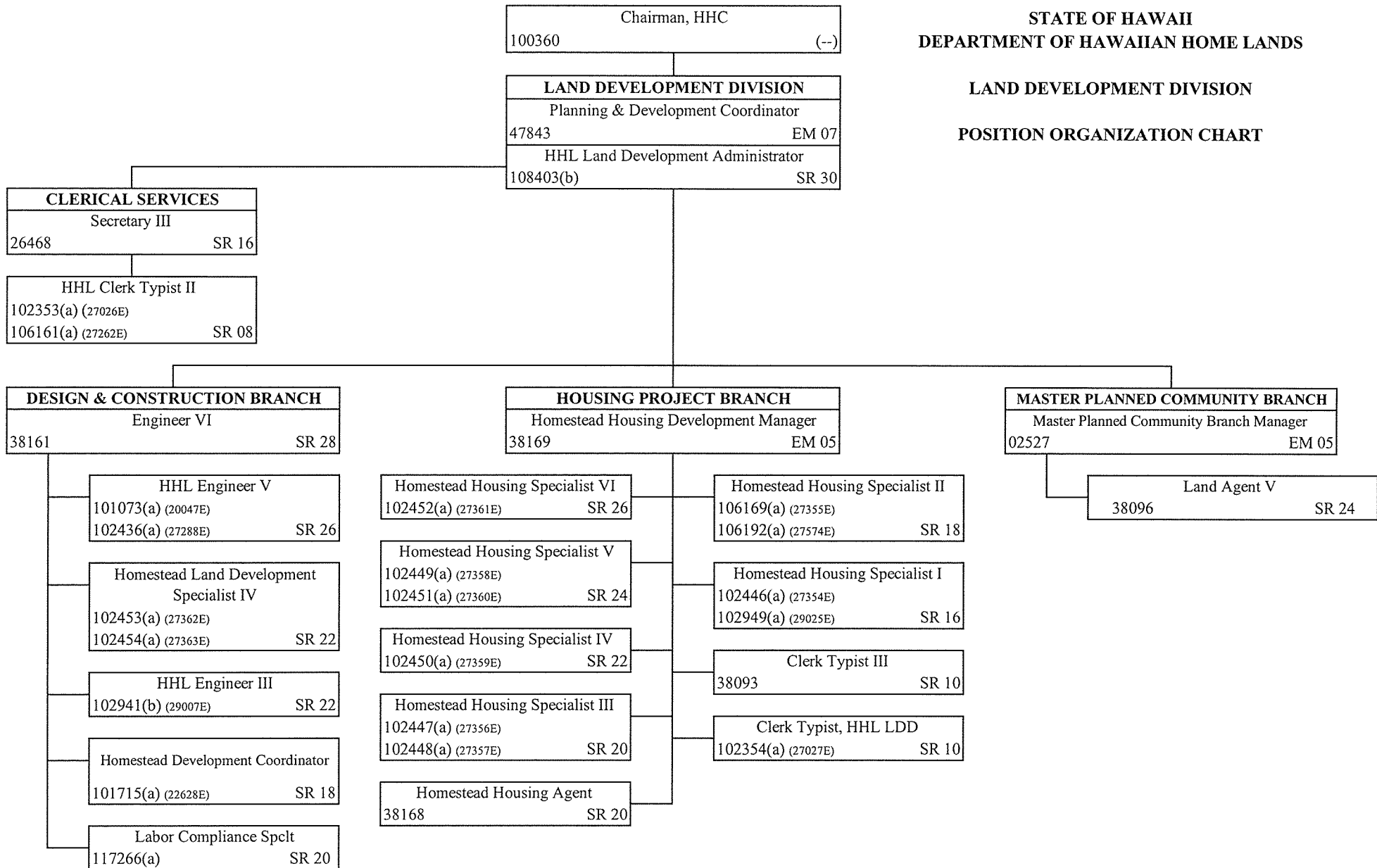
(a) Temporary exempt position  
 (b) Authorized by Act 289, SLH 1993, but not as yet classified

STATE OF HAWAII  
DEPARTMENT OF HAWAIIAN HOME LANDS  
LAND DEVELOPMENT DIVISION  
ORGANIZATION CHART



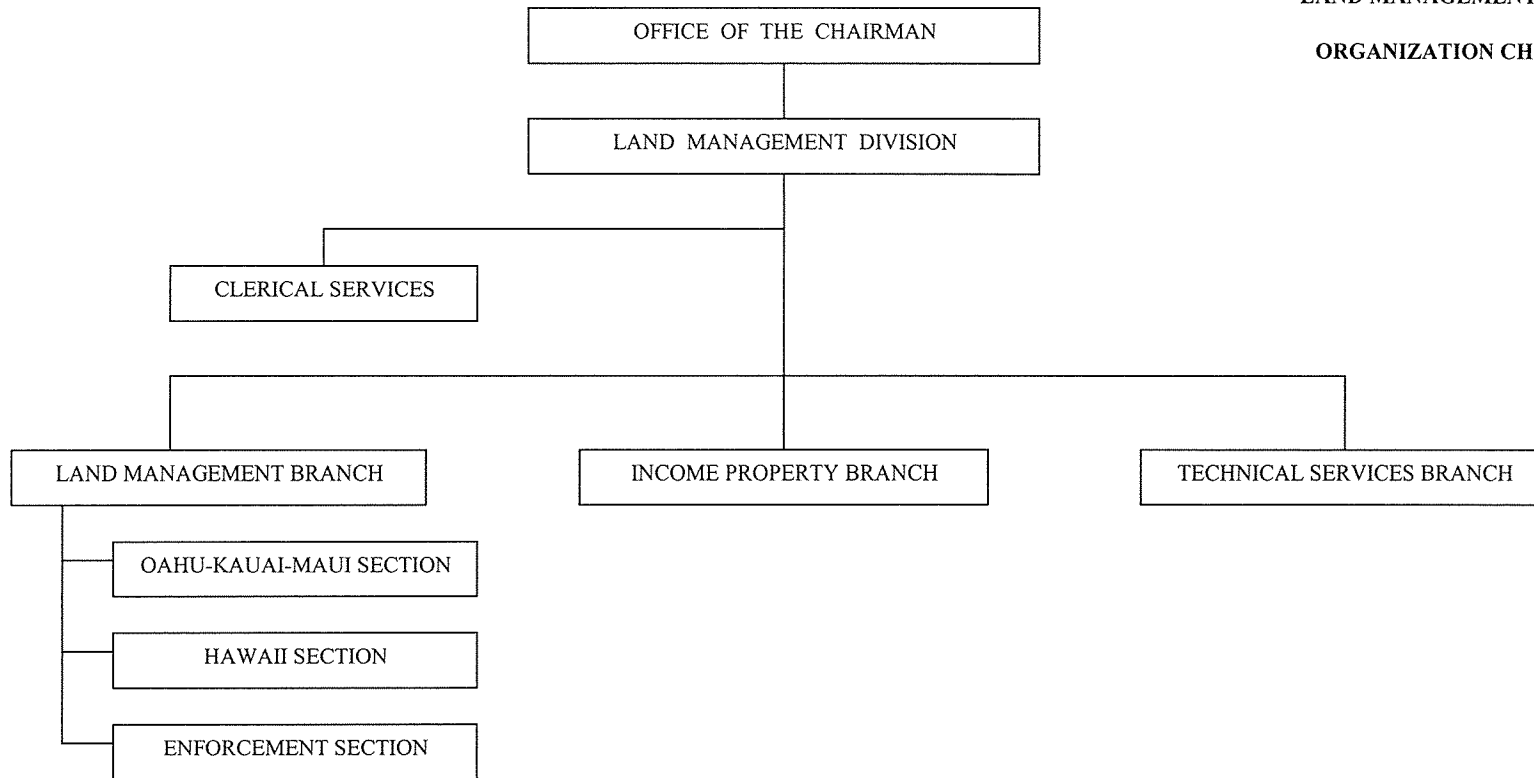
STATE OF HAWAII  
DEPARTMENT OF HAWAIIAN HOME LANDS

LAND DEVELOPMENT DIVISION  
POSITION ORGANIZATION CHART



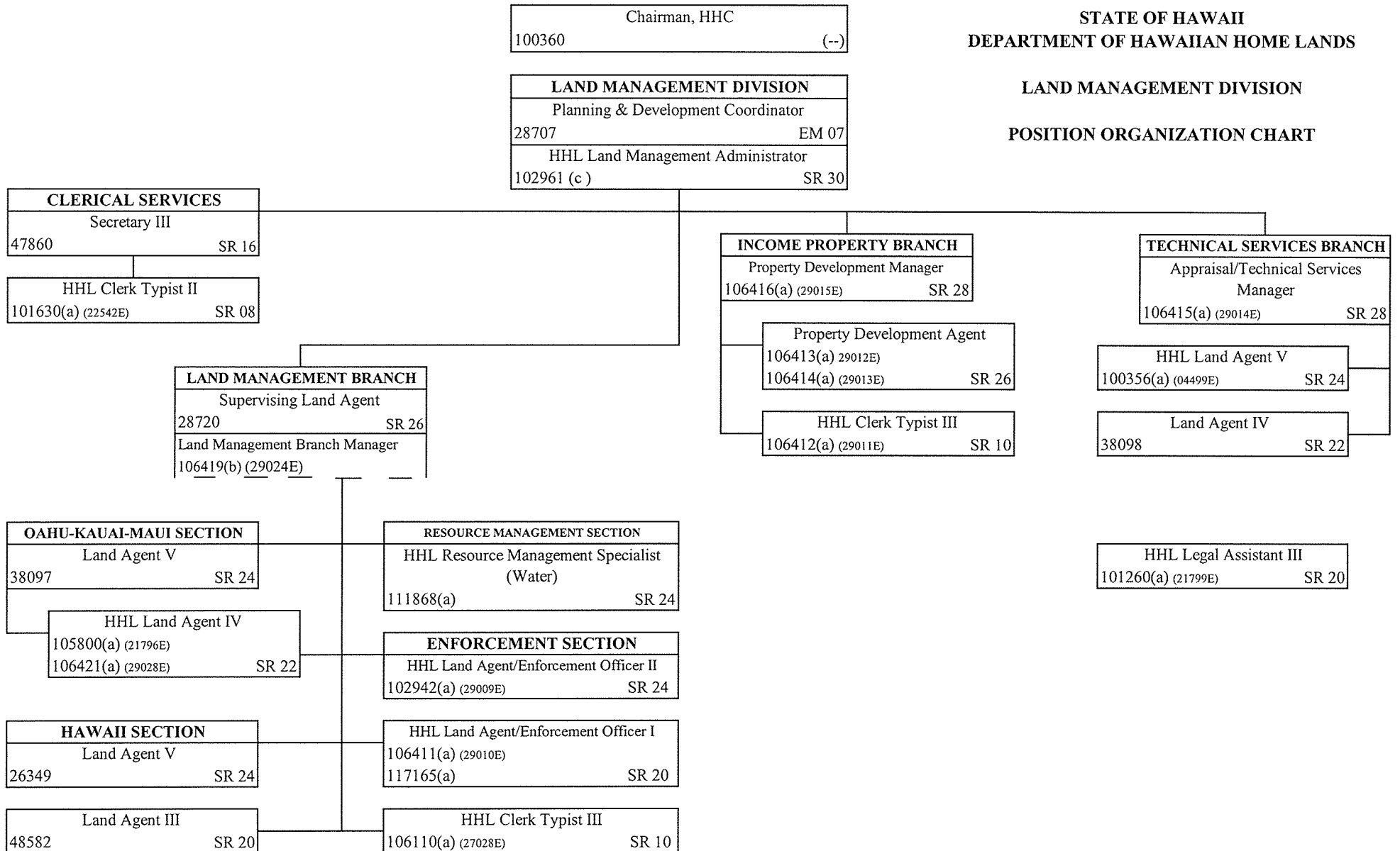
- (a) Temporary exempt position
- (b) This position is to provide coverage until the permanent position can be filled

STATE OF HAWAII  
DEPARTMENT OF HAWAIIAN HOME LANDS  
LAND MANAGEMENT DIVISION  
ORGANIZATION CHART



STATE OF HAWAII  
DEPARTMENT OF HAWAIIAN HOME LANDS

LAND MANAGEMENT DIVISION  
POSITION ORGANIZATION CHART



- (a) Temporary exempt position
- (b) This position is being temporarily staffed by a temporary exempt position, #106419 (29024E) to provide coverage in the absence of the incumbent of Position #28720 who is on TA to another position
- (c) This position is to provide coverage until the permanent position can be filled