

---

Screen clipping taken: 2/10/2010, 4:43 PM

# no on HB2421

Sunday, March 14, 2010  
9:03 PM

Subject	<b>no on HB2421</b>
From	<a href="#">Gabriela Taylor</a>
To	WTLTestimony
Sent	Sunday, March 14, 2010 12:34 PM

Chairs Hee, Fukunaga and Gabbard,

I am all for taxing and decreasing oil burning for energy in Hawaii, but this bill is not the way to do it. Eg. coal needs to be taxed, wind and solar need to be promoted and palm oil for bio diesel eliminated.

Please- No on HB 2421.

Gabriela Taylor

5620 Keapana Rd. Kapaa, Hi. 96746

808 823-9013

From	<a href="#">Gary Andersen</a>
To	WTLTestimony
Sent	Saturday, March 13, 2010 4:30 PM

Esteemed Gentlemen and Gentle lady...(Sorry Ma'am)

Please be so kind as to HOLD HB 2421. Obviously what our state needs is a solid definition of "Clean Energy" to start with. So far, I have found none.

It seems logical that the energy needs, among other infrastructure considerations, should be addressed on an island by island basis with an island by island solution. Concurrently the carrying capacity of each island must be determined.

We cannot continue to demolish and build. Until we know what the carrying capacity of each island is we are engaging in a very unwise practice. I can tell you this, carrying capacity is not an infinite number.

Water conservation warnings, exploding water pipes, and sewage overflows would indicate to even the barely conscious that we, in the middle of the Pacific, need a better plan than that proffered by HB 2321.

Respectfully submitted,

*Gary Andersen*  
61691 Manoa Station  
Honolulu, Hawai'i 96839  
808-988-0900

Hotmail: Trusted email with Microsoft's powerful SPAM protection. [Sign up now.](#)

# HB2421

Subject	<b>HB2421</b>
From	<a href="#">Jeff Sacher</a>
To	WTLTestimony
Sent	Sunday, March 14, 2010 7:42 PM

Committee on Water, Land, Agriculture, and Hawaiian Affairs  
Committee on Energy and Environment  
Committee on Economic Development and Technology  
Monday, March 15, 2010  
3:00 p.m.  
Room 229

Chairs Hee, Fukunaga and Gabbard.

My understanding is that HB2421 proposes to tax imported petroleum oil; however it will not tax imported coal, imported ethanol and imported palm oil biodiesel which is grown by destroying rainforests.

PLEASE. First work out the details. We're constantly using Band-Aids for problems because so little thought and foresight are used.

I'm writing to ask that you please hold HB 2421.  
Mahalo.  
Jeff Sacher  
Kawaihae, Big Island

Testimony for WTL 3/17/2010 2:45:00 PM HB2923

Conference room: 229

Testifier position: support

Testifier will be present: Yes

Submitted by: Kamaki Kanahele

Organization: SCHHA

Comments:

The Sovereign Councils of the Hawaiian Homeland Assembly (SCHHA), is an association of more than 28 homestead community homestead associations across the state. Our homestead associations are located on Kauai, Oahu, Hawaii, Lanai, Maui and Molokai. Founded in 1987, the SCHHA is the oldest advocacy organization formed to unify and address the priorities of homestead lessees under the Hawaiian Homes Commission Act (HHCA). The SCHHA is a partner organization of the Native Hawaiian Policy Center, administered by the Council for Native Hawaiian Advancement (CNHA). We work closely with CNHA to identify relevant policy and program priorities that serve the over 30,000 residents of Hawaiian home land communities.

For three years, the SCHHA has stood in strong opposition to legislation promoted by Governor Lingle and former DHHL Chairman Micah Kane to amend the Hawaiian Homes Commission Act to give carte blanche access to Hawaiian trust lands of 99 year leases for non-homesteading purposes, and in particular for commercial developers. We opposed because the legislation was never about the beneficiaries of the trust, and indeed never considered the priorities of homestead leaders. It was single focused in its purpose - to deliver Hawaiian lands without any regard to the priorities of the beneficiaries of the trust.

We have worked with CNHA and your office, to review substitute language for a bill that would provide more reasonable language including:

1. instead of 99 year leases, a 20 year extension with specific criteria that needs to be met;
2. revenue sharing of all commercial lease revenue to a cultural and community development fund for beneficiary organizations to implement community based projects in our respective homesteads;
3. annual reporting by DHHL on the status of commercial leasing in an effort to raise the awareness and priority of DHHL in creating commercial leasing opportunities for its beneficiaries;
4. beneficiary consultation on commercial leases so that our people are aware of the intent of DHHL when our trust lands will be leased for non-homesteading purposes.

Senator Hee, thank you for hearing the priorities of the constituents of the Hawaiian home land trust, and crafting a substitute bill that represents the needs of the trust, as well as the priorities of its beneficiaries for the future.

We are opposed to the bill in its present form which was passed by the house, but fully supportive of the substitute amendment presented by your office. Mahalo.

Kamaki Kanahele, SCHHA Chairman

# Ag Census 1997

Tuesday, March 23, 2010  
5:27 PM

**Table 1. Historical Highlights: 1997 and Earlier Census Years**

[For meaning of abbreviations and symbols, see introductory text]

All farms	1997	1992	1987	1982	1978	1974	1969	1964
Farms ..... number..	5 473	5 336	4 870	4 595	4 310	3 020	3 896	4 864
Land in farms .....acres..	1 439 071	1 588 843	1 721 521	1 957 501	1 988 282	2 118 976	2 058 087	2 354 454
Average size of farm .....acres..	263	298	353	426	461	702	528	484
Estimated market value of land and buildings <sup>1</sup> :								
Average per farm .....dollars..	632 281	722 189	603 435	778 471	413 948	340 570	156 800	98 936
Average per acre .....dollars..	2 405	2 425	1 707	1 826	897	465	297	205
Estimated market value of all machinery and equipment <sup>1</sup> , \$1,000..	211 775	283 899	199 280	190 230	172 521	97 279	94 677	(NA)
Average per farm .....dollars..	38 709	53 207	41 208	41 735	41 047	39 115	27 418	(NA)
Farms by size:								
1 to 9 acres .....	3 456	3 410	2 855	2 743	2 527	1 633	2 024	2 603
10 to 49 acres .....	1 417	1 342	1 401	1 261	1 211	872	1 281	1 594
50 to 179 acres .....	318	313	341	320	298	271	336	359
180 to 499 acres .....	139	133	128	126	146	127	140	168
500 to 999 acres .....	43	34	31	33	24	23	28	38
1,000 to 1,999 acres .....	33	31	36	33	32	24	17	22
2,000 acres or more .....	67	73	78	79	74	70	70	80
Total cropland ..... farms..	4 882	4 735	4 170	3 836	3 565	2 485	3 089	3 631
Harvested cropland ..... acres..	292 107	293 371	327 396	346 113	333 262	351 627	379 766	370 896
Irrigated land ..... farms..	4 594	4 472	3 837	3 538	3 299	2 265	2 750	3 422
Irrigated land ..... acres..	100 094	136 431	152 719	155 960	158 639	151 433	178 657	167 497
Market value of agricultural products sold <sup>2</sup> , \$1,000..	496 935	552 054	609 741	558 608	419 251	609 788	285 619	187 504
Average per farm .....dollars..	90 798	103 458	125 203	121 569	97 274	201 917	73 311	38 549
Crops, including nursery and greenhouse crops, \$1,000..	401 411	453 410	498 317	456 069	331 020	536 537	236 177	151 862
Livestock, poultry, and their products ..... \$1,000..	95 524	98 644	111 424	102 539	88 230	73 237	49 364	35 558
Farms by value of sales <sup>3</sup> :								
Less than \$2,500 .....	1 638	1 790	1 402	1 454	1 398	983	1 731	2 602
\$2,500 to \$4,999 .....	743	754	674	706	688	466	628	686
\$5,000 to \$9,999 .....	797	715	745	653	672	428	493	594
\$10,000 to \$24,999 .....	989	883	911	788	675	675	891	834
\$25,000 to \$49,999 .....	635	484	476	397	350	870	891	834
\$50,000 to \$99,999 .....	323	291	287	237	233	190	94	127
\$100,000 to \$499,999 .....	334	326	278	266	209	64	48	127
\$500,000 or more .....	114	113	97	87	71	64	48	127
Farms by type of organization:								
Individual or family (sole proprietorship) .....	4 583	4 425	4 035	3 852	3 614	(NA)	(NA)	(NA)
Partnership .....	328	379	404	351	326	(NA)	(NA)	(NA)
Corporation .....	497	456	370	352	326	(NA)	(NA)	(NA)
Other—cooperative, estate or trust, institutional, etc. ....	65	76	61	40	44	(NA)	(NA)	(NA)
Operators by days worked off farm <sup>4</sup> :								
None .....	2 148	1 961	1 723	1 633	1 551	829	2 494	(NA)
Any .....	2 827	2 864	2 728	2 534	2 495	1 449	2 494	2 726
200 days or more .....	1 566	1 487	1 476	1 371	1 351	889	1 452	2 256
Operators by principal occupation <sup>5</sup> :								
Farming .....	3 052	2 926	2 816	2 565	2 239	1 512	(NA)	(NA)
Other .....	2 421	2 410	2 054	2 030	2 071	1 290	(NA)	(NA)
Average age of operator <sup>6</sup> .....years..	55.0	53.8	53.0	52.7	52.7	55.4	53.1	51.0
Total farm production expenses <sup>1</sup> ..... \$1,000..	398 567	466 826	495 759	(NA)	(NA)	323 612	247 215	(NA)
Selected farm production expenses <sup>1</sup> :								
Livestock and poultry purchased ..... \$1,000..	6 471	7 856	15 230	17 581	12 930	10 859	11 564	4 237
Feed for livestock and poultry ..... \$1,000..	35 749	37 080	42 629	41 548	34 227	37 136	16 131	14 060
Commercial fertilizer <sup>5</sup> ..... \$1,000..	25 853	30 574	30 717	33 477	26 530	18 807	14 523	11 466
Petroleum products ..... \$1,000..	16 335	18 110	17 197	19 864	11 595	7 344	6 109	5 963
Hired farm labor ..... \$1,000..	150 682	178 788	193 230	146 277	131 217	88 464	84 455	57 345
Interest <sup>6</sup> ..... \$1,000..	13 964	14 051	22 930	17 771	(NA)	(NA)	(NA)	(NA)
Agricultural chemicals <sup>5</sup> ..... \$1,000..	17 187	20 396	18 233	16 417	13 700	8 374	7 844	(NA)
Livestock and poultry:								
Cattle and calves inventory ..... farms..	829	874	1 003	1 040	839	580	831	1 540
number.....	181 732	191 230	211 045	241 969	218 901	227 461	232 663	218 442
Beef cows ..... farms..	625	655	724	784	659	453	(NA)	1 051
number.....	93 711	87 620	83 427	90 523	85 623	86 601	83 516	77 383
Milk cows ..... farms..	44	57	73	88	78	73	99	200
number.....	8 389	10 816	11 836	12 767	12 956	13 148	14 151	13 865
Cattle and calves sold ..... farms..	660	699	807	817	740	539	729	1 088
number.....	66 726	82 788	101 315	91 675	105 068	96 419	93 632	62 765
Hogs and pigs inventory ..... farms..	248	253	372	371	399	261	369	1 035
number.....	29 440	28 570	47 564	49 029	50 071	51 021	52 335	67 882
Hogs and pigs sold ..... farms..	190	200	307	319	352	261	338	695
number.....	38 066	47 531	69 019	66 875	(D)	73 262	71 766	81 782
Layers and pullets 13 weeks old and older inventory (see text) <sup>7</sup> ..... farms..	140	177	181	201	141	95	144	589
number.....	726 534	935 278	(D)	929 210	1 243 801	1 305 449	1 072 425	1 044 516
Broilers and other meat-type chickens sold ..... farms..	9	14	12	23	27	20	35	49
number.....	478 672	1 201 331	2 069 316	3 173 500	2 588 757	1 930 831	1 432 100	1 411 679

See footnotes at end of table.

**Table 1. Historical Highlights: 1997 and Earlier Census Years—Con.**

[For meaning of abbreviations and symbols, see introductory text]

All farms	1997	1992	1987	1982	1978	1974	1969	1964
Selected crops harvested:								
Sugarcane for sugar ..... farms..	13	31	79	188	328	(NA)	(NA)	705
acres..	31 483	62 915	79 234	89 696	99 065	(NA)	(NA)	110 803
tons..	2 873 712	5 488 214	7 934 181	8 950 242	9 213 485	(NA)	(NA)	10 740 597
Pineapples harvested ..... farms..	27	21	18	15	20	(NA)	(NA)	76
acres..	12 992	15 500	22 262	23 141	25 314	(NA)	(NA)	38 415
tons..	348 428	556 748	683 182	626 860	685 502	(NA)	(NA)	923 729
Vegetables harvested for sale (see text) <sup>g</sup> ..... farms..	657	602	710	746	751	532	574	728
acres..	6 549	5 129	5 587	4 673	5 509	2 611	3 507	4 240
Land in orchards..... farms..	2 786	2 537	2 128	1 825	1 438	982	1 198	1 802
acres..	37 906	38 590	33 564	23 178	17 948	16 016	16 951	12 766

<sup>1</sup>Data are based on a sample of farms.

<sup>2</sup>Data for 1974 and prior years include the value of forest products sold.

<sup>3</sup>Data for 1982 and prior years exclude abnormal farms.

<sup>4</sup>Data for 1974 apply only to individual or family operations (sole proprietorship) and partnerships.

<sup>5</sup>Data for 1964 to 1982 do not include cost of custom applications; data for agricultural chemicals include the cost of lime for 1969 to 1978.

<sup>6</sup>Data for 1982 do not include imputation for item nonresponse.

<sup>7</sup>Data for 1969 to 1992 are for chickens 3 months old or older inventory; data for 1964 are for chickens 4 months old or older.

<sup>8</sup>Data for 1974 were from land area used.

# Ag Census 2007

Tuesday, March 23, 2010  
5:28 PM

**Table 1. Historical Highlights: 2007 and Earlier Census Years**

[For meaning of abbreviations and symbols, see introductory text]

All farms	2007	Not adjusted for coverage					
		2002	1997	1992	1987	1982	1978
Farms ..... number	7,521	5,398	5,473	5,336	4,870	4,595	4,310
Land in farms ..... acres	1,121,329	1,300,499	1,439,071	1,588,843	1,721,521	1,957,501	1,988,282
Average size of farm ..... acres	149	241	263	298	353	426	461
Estimated market value of land and buildings <sup>1</sup> :							
Average per farm ..... dollars	1,146,213	842,875	632,281	722,189	603,435	778,471	413,948
Average per acre ..... dollars	7,688	3,507	2,405	2,425	1,707	1,826	897
Estimated market value of all machinery and equipment <sup>1</sup> ..... \$1,000	304,997	186,163	211,775	283,699	199,280	190,230	172,521
Average per farm ..... dollars	40,666	35,568	38,709	53,207	41,208	41,735	41,047
Farms by size:							
1 to 9 acres ..... farms	4,813	3,440	3,456	3,410	2,855	2,743	2,527
10 to 49 acres ..... farms	1,972	1,309	1,417	1,342	1,401	1,261	1,211
50 to 179 acres ..... farms	423	335	318	313	341	320	296
180 to 499 acres ..... farms	154	146	139	133	128	126	146
500 to 999 acres ..... farms	44	61	43	34	31	33	24
1,000 to 1,999 acres ..... farms	50	41	33	31	36	33	32
2,000 acres or more ..... farms	65	66	67	73	78	79	74
Total cropland ..... farms	6,281	4,755	4,882	4,735	4,170	3,836	3,595
Harvested cropland ..... farms	177,626	211,120	292,107	293,371	327,396	346,113	333,262
Irrigated land ..... farms	6,044	4,522	4,594	4,472	3,837	3,538	3,299
Irrigated land ..... acres	103,120	109,461	100,094	136,431	152,719	155,960	158,639
Irrigated land ..... farms	2,810	2,231	2,241	1,827	1,827	1,544	1,493
Irrigated land ..... acres	58,635	69,194	76,971	134,338	148,884	145,982	159,323
Market value of agricultural products sold (see text) ..... \$1,000	513,626	533,423	496,935	552,054	609,741	558,608	419,251
Average per farm ..... dollars	68,292	98,819	90,798	103,458	125,203	121,569	97,274
Crops, including nursery and greenhouse crops ..... \$1,000	429,916	445,356	401,411	453,410	498,317	456,069	331,020
Livestock, poultry, and their products ..... \$1,000	83,711	88,067	95,524	98,644	111,424	102,539	88,230
Farms by value of sales <sup>2</sup> :							
Less than \$2,500 ..... farms	2,932	1,407	1,638	1,790	1,402	1,454	1,398
\$2,500 to \$4,999 ..... farms	1,012	714	743	754	674	708	688
\$5,000 to \$9,999 ..... farms	996	916	797	715	745	653	672
\$10,000 to \$24,999 ..... farms	1,143	1,056	989	863	911	788	675
\$25,000 to \$49,999 ..... farms	557	506	535	484	476	397	350
\$50,000 to \$99,999 ..... farms	353	314	323	291	287	237	233
\$100,000 to \$499,999 ..... farms	390	352	334	328	278	266	209
\$500,000 or more ..... farms	148	133	114	113	97	87	71
Farms by type of organization:							
Family or individual ..... farms	6,363	4,629	4,583	4,425	4,035	3,852	3,614
Partnership ..... farms	437	225	328	379	404	351	326
Corporation ..... farms	617	472	497	456	370	352	326
Other-cooperative, estate or trust, institutional, etc ..... farms	104	72	65	76	61	40	44
Principal operator by days of work off farm <sup>3</sup> :							
None ..... farms	1,903	2,786	2,148	1,961	1,723	1,633	1,551
Any ..... farms	5,618	2,612	2,827	2,864	2,728	2,534	2,495
200 days or more ..... farms	2,827	1,661	1,566	1,487	1,476	1,371	1,351
Principal operator by primary occupation:							
Farming ..... farms	3,861	3,125	3,052	2,926	2,816	2,565	2,239
Other ..... farms	3,660	2,273	2,421	2,410	2,054	2,030	2,071
Average age of principal operator ..... years	58.6	56.5	55.0	53.8	53.0	52.7	52.7
Total farm production expenses <sup>4</sup> ..... \$1,000	486,648	450,946	398,567	466,826	495,759	(NA)	(NA)
Selected farm production expenses <sup>5</sup> :							
Livestock and poultry purchased or leased (see text) ..... \$1,000	3,343	6,025	6,471	7,856	15,230	17,581	12,930
Feed purchased ..... \$1,000	24,678	27,997	35,749	37,060	42,629	41,548	34,227
Fertilizer, lime, and soil conditioners <sup>6</sup> ..... \$1,000	29,807	17,791	25,653	30,574	30,717	33,477	26,530
Gasoline, fuels, and oils ..... \$1,000	24,443	14,458	16,335	18,110	17,197	19,864	11,595
Hired farm labor ..... \$1,000	178,496	177,692	150,682	178,788	193,230	146,277	131,217
Interest expense <sup>6</sup> ..... \$1,000	14,838	8,633	13,964	14,051	22,930	17,771	(NA)
Chemicals <sup>7</sup> ..... \$1,000	17,238	16,134	17,167	20,396	18,233	16,417	13,700
Livestock and poultry:							
Cattle and calves inventory ..... farms	1,142	748	829	874	1,003	1,040	839
Beef cows ..... farms	151,479	154,308	181,732	191,230	211,045	241,969	218,901
Milk cows ..... farms	853	578	625	655	784	784	659
Cattle and calves sold ..... farms	86,000	83,277	93,711	87,620	83,427	90,523	85,623
Hogs and pigs inventory ..... farms	15	44	44	57	88	78	78
Hogs and pigs sold ..... farms	2,296	6,465	8,389	10,816	11,836	12,767	12,956
Cattle and calves sold ..... farms	713	550	660	699	807	817	740
Hogs and pigs inventory ..... farms	70,567	60,739	66,726	82,788	101,315	91,675	105,088
Hogs and pigs sold ..... farms	225	204	248	253	372	371	399
Layers inventory (see text) ..... farms	14,933	23,364	29,440	28,570	47,564	49,029	50,071
Broilers and other meat-type chickens sold ..... farms	148	158	190	200	307	319	352
Broilers and other meat-type chickens sold ..... farms	20,569	33,231	38,066	47,831	66,019	66,875	(D)
Layers inventory (see text) ..... farms	354	125	(NA)	(NA)	(NA)	(NA)	(NA)
Broilers and other meat-type chickens sold ..... farms	368,233	537,882	(NA)	(NA)	(NA)	(NA)	(NA)
Broilers and other meat-type chickens sold ..... farms	7	17	9	14	12	23	27
Broilers and other meat-type chickens sold ..... farms	(D)	881,112	478,672	1,201,331	2,069,316	3,173,500	2,588,757

See footnote(s) at end of table.

--continued



**Table 1. Historical Highlights: 2007 and Earlier Census Years - Con.**

[For meaning of abbreviations and symbols, see introductory text]

All farms	2007	Not adjusted for coverage					
		2002	1997	1992	1987	1982	1978
<b>Selected crops harvested:</b>							
Corn for grain .....	farms	14	12	(NA)	(NA)	(NA)	(NA)
	acres	3,115	4,383	(NA)	(NA)	(NA)	(NA)
	bushels	124,878	203,391	(NA)	(NA)	(NA)	(NA)
Corn for silage or greenchop .....	farms	-	2	1	(NA)	(NA)	(NA)
	acres	-	(D)	(D)	(NA)	(NA)	(NA)
	tons	-	(D)	(D)	(NA)	(NA)	(NA)
Forage-land used for all hay and haylage, grass silage, and greenchop (see text) .....	farms	30	14	(NA)	(NA)	(NA)	(NA)
	acres	1,000	1,112	(NA)	(NA)	(NA)	(NA)
	tons, dry	2,215	2,261	(NA)	(NA)	(NA)	(NA)
Sugarcane for sugar .....	farms	9	2	13	31	79	188
	acres	(D)	(D)	31,483	62,915	79,234	89,696
	tons	(D)	(D)	2,873,712	5,488,214	7,934,181	8,950,242
Pineapples harvested .....	farms	42	34	27	21	18	20
	acres	(D)	10,211	12,992	15,500	22,262	23,141
	tons	(D)	314,628	348,428	558,748	683,182	628,860
Vegetables harvested for sale (see text) .....	farms	901	833	657	602	710	751
	acres	6,845	6,554	6,549	5,129	5,587	4,673
Potatoes .....	farms	15	11	7	(NA)	(NA)	(NA)
	acres	7	6	(D)	(NA)	(NA)	(NA)
Sweet potatoes .....	farms	94	59	53	(NA)	(NA)	(NA)
	acres	297	294	217	(NA)	(NA)	(NA)
Land in orchards .....	farms	4,443	2,833	2,786	2,537	2,128	1,825
	acres	36,652	34,908	37,906	38,590	33,564	23,178

<sup>1</sup> Data for 2002 and prior years are based on a sample of farms.

<sup>2</sup> Data for 1982 and 1978 exclude abnormal farms.

<sup>3</sup> Data for 1987 and prior years do not include imputation for item nonresponse.

<sup>4</sup> Data for 1982 and 1978 do not include cost of custom applications; data for chemicals include the cost of lime for 1978.

<sup>5</sup> Data for 1997 and prior years exclude cost of lime and manure.

<sup>6</sup> 1982 data do not include imputation for item nonresponse.

<sup>7</sup> Data for 2002 and prior years do not include potatoes, sweet potatoes, or ginseng.

**Testimony reg. GM 459, April 7th, 2010; time of hearing: 2.45pm on behalf of Ms. Michelle Galimba to be nominated to the Board of Agriculture.**

My name is Joachim Oster and I support Ms. Galimba's nomination to the Board of Agriculture. For a year I have had the opportunity and pleasure to work closely with Michelle on the Big Island Resource & Development Council (BIRC&D), part of the NRCS/USDA nationwide volunteer organization. We both hold director positions for our respective districts of Kona and Ka'u. In addition I chair the Committee of Agriculture within the BIRC&D. Professionally I own a vertically integrated coffee farm, process and retail 3 brands of coffee worldwide.

Michelle Galimba would be an excellent choice to represent Hawaiian agriculture, the various nurseries, forestry, ranches and farms, their opportunities and concerns. Her professional background as a rancher, running a multigenerational family farm, paired with a sharp and uncanny ability to identify the core of a problem, more than qualify her for this position. With her friendly, yet determined demeanor she was instrumental in organizing the very successful, annual Ka'u Coffee Festival for several years. Michelle can not only articulate present issues precisely, but, maybe even more important, she is able to envision future challenges to the complex social-economic dynamics of food production.

Hawaii is at a unique point in time, where there's more consumer awareness towards its value-added agricultural products, combined with more opportunities than ever for farmers to market those through various channels to more countries. Michelle Galimba's political participation to help steer our state's agriculture in these interesting times is the right thing and full-heartedly supported from my side.

Respectfully

Joachim Oster  
PO Box 286  
Kealahou, HI 96750  
tel 808 328-1401

# GM459 Galimba

Senate WTL committee

Hearing Date: Wednesday, April 7 at 2:45pm in room 229

Chair Senator Clayton Hee and Vice Chair Jill Tokuda

Testimony:

I, Amber Starr, am in support of Michelle Galimba's confirmation to the Board of Agriculture (GM 459).

Thank you,

Amber Starr

# GM459 Galimba

Tuesday, April 06, 2010  
8:55 AM

KAHUA RANCH, LTD.  
P. O. Box 837  
Kamuela, Hawaii 96743  
(808) 882-4646  
(808) 882-4444 Fax

April 5, 2010

## **The hearing for Michelle Galimba's confirmation to the Board of Agriculture**

**(GM 459)**

**Wednesday, April 7 at 2:45 PM in room 229 before the Senate WTL committee,  
Chair Senator Clayton Hee and Vice Chair Jill Tokuda.**

Dear Senators,

I am writing on behalf of Michelle Galimba; candidate for appointment to the Hawaii State Board of Agriculture.

I have known Michelle Galimba for almost 20 years. During that time, I have worked with her in numerous capacities. Initially as a fellow family rancher, Michelle and I have since collaborated on many projects. Involved with the Hawaii Cattle Producers Cooperative, we have worked on the Hawaiian Cattle Industry and redeveloping local markets. She has also been a focal point for the extremely successful "Taste of the Hawaiian Range" event held each fall which showcases Hawaii's diversified agricultural productivity. During this time she also serves on the Executive Board for the Hawaii Cattlemen's Association; the local branch of the of the state Hawaii Cattlemen's Council. Currently she is the President Elect. (The Hawaii Cattlemen's Council, Inc. (HCC) is the Statewide umbrella organization comprised of the five county level Cattlemen's Associations. Our 130+ member ranchers represent over 60,000 head of beef cows; more than 75% of all the beef cows in the State. Ranchers are the stewards of approximately 25% of the State's total land mass.)

During this time, Michelle's dedication and commitment to the betterment of Hawaii's Agriculture has been tireless. Her attention to all aspects of agriculture; from production to marketing to legislation has been consistent. She has the general wellbeing of agriculture at heart.

I recommend Michelle Galimba's nomination be confirmed without any reservations.

Respectfully,

*Tim*

Herbert M. "Tim" Richards III, DVM  
President & General Manager  
Kahua Ranch Limited

# GM459 Galimba

Subject | **Testimony in SUPPORT of MICHELLE M. GALIMBA**

Reference: Time: 2:24 p.m. Date: April 7, 2010 #: GM459

Earlier this year I was fortunate enough to meet Michelle Galimba at a dinner featuring Kuahiwi beef. While the meal was appetizing, it was my conversation with Michelle that was most beneficial. As a hands on food grower from a food growing family rooted in Hawaii, Michelle was able to share her knowledge in a manner that encouraged me to make changes in my dietary and purchasing practices. I in turn shared my knowledge with my family and am proud to say that more than one household has adopted better dietary and purchasing practices as a result of Michelle's information.

I encourage the confirmation and approval of Michelle M. Galimba for the State of Hawaii Board of Agriculture.

Mahalo,  
L.P. Faleafine

--

---

L.P. "Neenz" Faleafine  
*Building Communities, Forming Partnerships*  
98-1277 Kaahumanu Street #106-129  
Aiea, HI 96701  
[mobile] 808-542-5207  
[fax] 808-441-1958  
[skype] l.p.neenz.faleafine  
[IM] [lpfaleafine@gmail.com](mailto:lpfaleafine@gmail.com)  
[Wave] [lpfaleafine@googlewave.com](http://lpfaleafine@googlewave.com)  
[Twitter] @NEENZ

# GM425 Aipoalani

Subject

Testimony for Clisson Kunane Aipolani Hearing Wed April 7th 2:45PM

GM  
425

Submitting for consideration and confirmation to the Island Burial Council, WTL  
Islands of Kaua'i and Niihau, Gubernatorial Nominee, CLISSON KUNANE  
AIPOALANI, for a term to expire 6-30-2014.

Dear Committee Members:

I would like to submit testimony in favor of consideration and confirmation. Mr. Aipoalani is currently serving as Chair of the Kauai Niihau Burial Council. In that capacity he has shown poise and confidence in handling often emotional and hostile crowds. He has also shown a compassionate and well balanced approach in working with the burial plans being sent before us. I urge you to accept his nomination and submit for confirmation. Thank you.

Keith Yap  
Vice-Chair  
Kauai Niihau Burial Council

# GM427 Pacheco

*To Whom It May Concern:*

*Rob Pacheco has been a vital member of the Land Board—he is an excellent candidate for another term*

*Sincerely,*

*Rhoady Lee AIA*  
Rhoady Lee ARCHITECTURE & DESIGN  
PO Box 2080  
65-1234 Lindsey Road  
Kamuela, HI 96743  
v 808.885.9178 / f 808.885.7960  
[rrl@waimeaarchitect.com](mailto:rrl@waimeaarchitect.com)

# GM427 Pacheco

To Whom it May Concern,

I am writing in full support of Rob Pacheco for reappointment to the Board of Land and Natural Resources. Rob is a great resource for the DLNR and his broad understanding of the "outback" of Hawaii is a definite PLUS in his representation of the people of Hawaii.

Thank you for supporting Rob for this reappointment.

Rick Robinson  
P. O. Box 430  
Kealahou, HI 96750



# GM 427 Pacheco

Tuesday, April 06, 2010  
9:20 AM

Subject	<b>Recall: GM 427: Recommendation for Confirmation of Robert J. Pacheco to BLNR</b>
From	<a href="#">Barbara Huitt</a>
To	WTLTestimony
Sent	Monday, April 05, 2010 8:26 PM

Barbara Huitt would like to recall the message, "GM427: Recommendation for Confirmation of Robert J. Pacheco to BLNR".

-----  
Circular 230 Disclosure: To ensure compliance with requirements imposed by the IRS, we inform you that any tax advice contained in this communication (including any attachments) is not intended, or written to be used, and cannot be used for the purpose of avoiding tax-related penalties under the Internal Revenue Code.

\*\*\*\*\*  
\*\*\*\*\*

This message is intended for the use of the individual or entity to which it is addressed and may contain information that is privileged, confidential and exempt from disclosure under applicable law. If you are not the intended recipient, any dissemination, distribution or copying of this communication is strictly prohibited.

If you think you have received this communication in error, please notify us immediately by reply e-mail or by telephone (808)521-9200, and delete the original message.

# GM427 Pacheco

Testimony presented Before the  
Committee on Land, Water, Agriculture, and Hawaiian Affairs

April 7, 2010  
2:45 pm

By  
Stephanie Nagata

GM 427 relating to the confirmation of Robert Pacheco to the Board of Land and Natural Resources

Chair Hee, Vice Chair Tokuda and members of the Committee on Water Land Agriculture and Hawaiian Affairs:

I am writing to support the confirmation of Robert Pacheco to the Board of Land and Natural Resources. It has been an honor working with Rob, who I have come to know as a forthright and honorable person.

Rob is an active and tireless volunteer giving his time and financial support to numerous community organizations and events on the Island of Hawaii. His vast knowledge and experience with land use, conservation, environmental issues are invaluable in helping members of the community understand environmental and land use issues. His business acumen provides an added perspective in his review of issues brought before the Board of Land and Natural Resources. I have observed and admired Rob's willingness to listen and see issues from all perspectives, carefully weigh information, and render objective decisions.

I highly recommend Robert Pacheco's appointment to the Board of Land and Natural Resources.

Sincerely,

Stephanie Nagata  
Resident, Island of Hawaii

# GM427 Pacheco

Subject: Confirmation of Rob Pacheco to the Board of Land and Natural Resources. Item GM427  
Hearing of the Committee on Water, Land, Agriculture and Hawaiian Affairs. April 7, 2010, 2:45 pm

I am submitting this testimony in support of the confirmation of Rob Pacheco to the Board of Land and Natural Resources. Mr. Pacheco has been a very effective member of the Land Board. He has demonstrated a comprehensive knowledge of the diverse issues that come before the Board. He takes this responsibility very seriously. I strongly support his confirmation.

Robert Shallenberger, Ph.D.  
Hawaii Island Conservation Director  
The Nature Conservancy

Please consider the environment before printing this email

**Robert Shallenberger,  
Ph.D.**

*Hawai`i Island  
Conservation Director*

rshallenberger@tnc.org  
(808) 443-5404 (Phone)  
(808) 937-1775 (Mobile)  
(808) 885-4219 (Fax)

[nature.org](http://nature.org)

**The Nature  
Conservancy  
Hawai`i Island  
Office**

P.O. Box 6600  
Kamuela, HI 96743



# GM427 Pacheco

To: Clayton Hee  
Chairman, Committee on Water, Land, Agriculture and Hawaiian Affairs

From: George H. Robertson  
P.O. Box 44490  
Kamuela HI 96743

Subject: Confirmation of Robert J. Pacheco to Board of Land and Natural Resources

Re: Hearing Wednesday, April 7, 2:45 PM, Conference Room 229, State Capitol

I request your favorable consideration of Rob Pacheco in the confirmation process. Rob has been the right choice for the BLNR member representing the Big Island and he should be retained on the board. He has grown a successful business out of his lifelong commitment to conservation and he experiences daily the need for protection of our natural resources and habitats. Rob has served the Big Island and the State of Hawaii with dignity, intelligence, and fairness.

Please share this testimony with your committee members.

Sincerely,

George H. Robertson

# GM459 Galimba

Christopher English
Support

Subject	<b>Re: Confirmation Hearing-Board of Agriculture--Michelle Galimba</b>
---------	--

Aloha Senator Hee and all other Committee Members:

My name is Christopher English. I am currently the president of the Hawaii Cattlemen's Association (HCA), an organization that represents more than 60 ranches and in excess of 50,000 cows on the island of Hawaii. I am writing in support of the nomination of Michelle Galimba to the Board of Agriculture. Michelle is an excellent candidate for this position. She has tirelessly served the cattle industry through the years at both the county and state level. Her interest, knowledge and support of all agricultural in Hawaii are commendable.

On behalf of the HCA membership, I would ask that you please confirm Michelle Galimba as a member of the Board of Agriculture. Mahalo for your consideration.

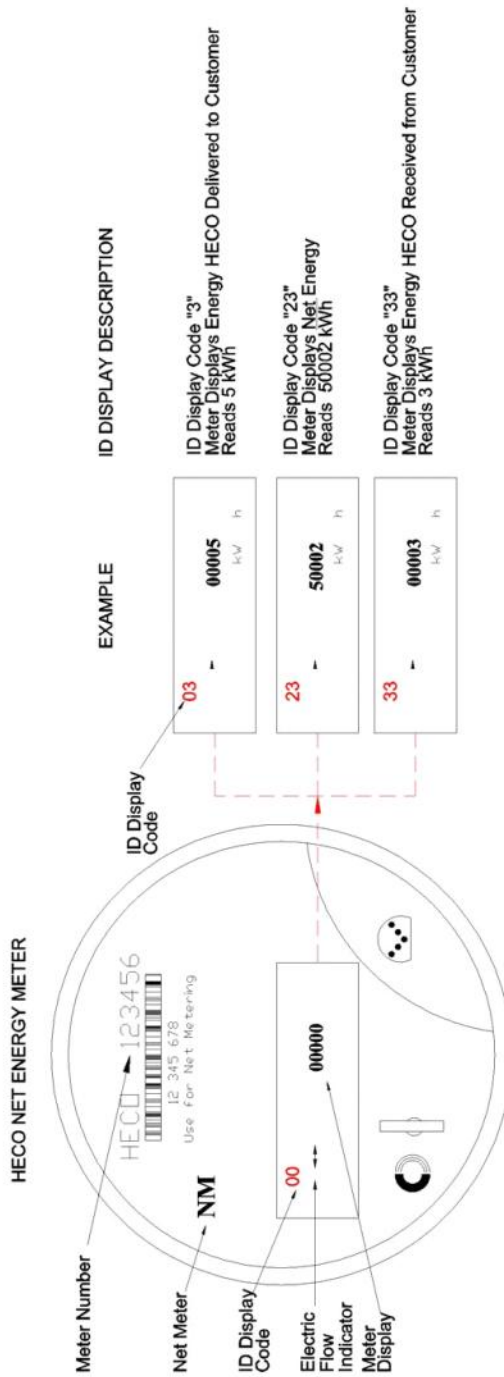
Respectfully,

Chris English  
President, Hawaii Cattlemen's Association  
Ponoholo Ranch, Ltd.  
chris@ponoholo.com  
Cell: (808) 936-7551  
Office: (808) 884-5100

# Net Energy Meter Display

Wednesday, April 07, 2010  
2:09 PM

## NET Energy Meter Display



### NOTES:

- The NEM meter is a solid state, multi-measurement, highly accurate electronic meter capable of measuring the flow of energy in both Forward (HECO Deliver) and Reverse (HECO Receive) directions. When the electric flow indicator points to the right, HECO is Delivering energy to the customer. When the indicator is pointing left, HECO is receiving energy from the customer.
- The NEM meter will scroll through several screens as shown in the example above. Refer to the ID Display Code to determine what information is being displayed.
- The NEM energy readings will increment based on the amount of power used over a period of time similar to how a car's odometer will increment for the distance traveled.
- The NEM meter is initially installed with the Delivered and Received energy registers at 00000. The Net Energy registers are initially set at 50000. This is to avoid negative Net Energy meter readings.
- The NEM customer is billed off the Net Energy Readings (ID Display 23).

Example

ID Display Code	Current Reading	Previous Reading	Consumption
23	50002	50000	= 00002

Net Energy

ID Display Code	Current Reading	Previous Reading	Consumption
03	00005	00000	= 00005
33	00003	00000	= 00003

Net Energy

Rev 01-30-09

Late Testimony

Subject	Michelle Galimba, GM 459, 4/7/10, 2:45pm
---------	--

Re: GM 459, 4/7/10/ 2:45

As Chef/Owner of two respected, neighborhood restaurants in Hawaii that are committed to supporting local agriculture I offer this testimony in support of the nomination of Michelle Galimba to the State Board of Agriculture. As a customer of Kuahiwi Ranch Natural Beef I have had the pleasure of getting to know Michelle on a profound level. She is much more than an extremely capable and passionate rancher. She understands the importance of collaboration and innovation in furthering Hawaii's community food systems and lessening our dependence on imported food. Most importantly, we must also consider Michelle's age and the youthful enthusiasm that she brings to an industry where the average farmer in Hawaii is upwards of 60 years old.

Michelle Galimba is the ideal candidate for the Board of Agriculture and to not confirm her nomination to the position would be a terrible mistake.

Mahalo,

Ed Kenney  
Chef/Owner  
TOWN  
3435 Waialae Ave. #103  
Honolulu, Hawaii 96816  
ph. 808-735-5900  
fax. 808-735-5017

Downtown@ the HiSAM  
250 S. Hotel Street, Grd Flr  
Honolulu, Hawaii 96813  
ph. 808-536-5900  
fax. 808-536-5988