



The Nature Conservancy
Hawai'i Program
923 Nu'uuanu Avenue
Honolulu, HI 96817

tel (808) 537-4508
fax (808) 545-2019
www.nature.org/hawaii

LATE
Testimony

Testimony of The Nature Conservancy of Hawai'i
Supporting S.C.R. 72 Requesting the United States
Department of Agriculture and the United States Department of Homeland
Security to Collaborate and Share Information with the Department of Agriculture
to Prevent Invasive Species from Entering the State of Hawai'i
House Committee on Agriculture
House Committee on Economic Revitalization, Business, & Military Affairs
Friday, April 17, 2009, 10:30AM, Room 312

The Nature Conservancy of Hawai'i is a private non-profit conservation organization dedicated to the preservation of Hawaii's native plants, animals, and ecosystems. The Conservancy has helped to protect nearly 200,000 acres of natural lands for native species in Hawai'i. Today, we actively manage more than 32,000 acres in 11 nature preserves on O'ahu, Maui, Hawai'i, Moloka'i, Lāna'i, and Kaua'i. We also work closely with government agencies, private parties and communities on cooperative land and marine management projects.

The Nature Conservancy of Hawai'i supports S.C.R. 72.

Invasive insects, diseases, snakes, weeds, and other pests are one of the greatest threats to Hawaii's economy, agriculture, natural environment, and the health and lifestyle of its people.

The Hawai'i Department of Agriculture (HDOA) is responsible for the inspection of domestic cargo and passengers arriving at Hawaii's ports to protect the state from introduction of unwanted plant and animal pests and diseases. The HDOA also inspects interisland shipments to prevent movement of pests between islands. The U.S. Department of Agriculture and the U.S. Department of Homeland Security are responsible for inspecting international passenger and cargo arrivals.

In some instances, federal quarantine laws are primarily designed to protect mainland agriculture and do not take into account the potential risks to Hawai'i crops or native habitat. For this reason, it is essential that federal inspection agencies collaborate and share information with HDOA officials to ensure the highest possible level of protection and the smooth movement of cargo into and around the state.

The HDOA has developed a multi-faceted Biosecurity Plan to enhance its own efforts with more inspectors, more efficient and effective inspection services, joint state-federal inspection facilities, and agreements with importers and producers for improved sanitary protocols before items are shipped to Hawai'i. The financial and personnel support provided by the Legislature, including the authority to assess a reasonable service fee on incoming cargo, has been essential to implementing this plan. An critical component of the Biosecurity Plan is the cooperation and partnership of the federal inspection authorities.

BOARD OF TRUSTEES

S. Haunani Apoliona Peter D. Baldwin Christopher J. Benjamin Zadoc W. Brown, Jr. Carl A. Carlson, Jr. David C. Cole
Samuel A. Cooke Peter H. Ehrman Kenton T. Eldridge Guy Fujimura J. Stephen Goodfellow Thomas Gottlieb James J.C. Haynes
Ron Higgins Peter Ho Stanley Hong J. Douglas Ing Mark L. Johnson Dr. Kenneth Kaneshiro Bert A. Kobayashi, Jr.
Faye Watanabe Kurren Duncan MacNaughton Bonnie McCloskey Bill D. Mills Wayne Minami Michael T. Pfeffer H. Monty
Richards Jean E. Rolles Scott Rolles James Romig Crystal Rose Eric Yeaman



HAWAII FOREST INDUSTRY ASSOCIATION
P. O. Box 5594 ❖ Kailua-Kona, HI 96745-5594
Phone: 808-933-9411
Email: hawaii.forest@hawaiiintel.net
Website: www.hawaiiforest.org

LATE
Testimony

April 16, 2009

**TESTIMONY IN SUPPORT OF SENATE CONCURRENT RESOLUTION
S.C.R. NO. 72**

Dear Chair Tsuji, Vice Chair Wooley, Committee on Agriculture and Chair McKelvey, Vice Chair Choy, Committee on Economic Revitalization, Business and Military Affairs:

Thank you for the opportunity to provide testimony in support of S.C.R. No. 72, requesting the U.S. Department of Agriculture and the U.S. Department of Homeland Security to collaborate and share information with the Department of Agriculture to prevent invasive species from entering the State of Hawaii.

The Hawaii Forest Industry Association (HFIA) is supportive of legislation that prevents the spread of invasive species to Hawaii. It is one of the greatest threats to Hawaii's economy, natural environment, and the health and lifestyle of the people of Hawaii. Invasive species have led to crop losses, native species extinction, the destruction of native forests, the spread of disease and the quarantine of exported agricultural crops. Eradication programs have also cost the State millions of dollars.

In 2003, agricultural inspections shifted from the U.S. Department of Agriculture to the U.S. Department of Homeland Security, Customs and Border Protection. As a result of this change, pest interceptions have dropped drastically resulting in an influx of invasive species to farms and conservation areas across the nation.

HFIA supports the prevention of invasive species to Hawaii and efforts to ensure that our farms, pristine forests and other conservation areas are protected. It is for these reasons we support the intent of S.C.R. No. 72 which requests that the U.S. Department of Agriculture and the U.S. Department of Homeland Security collaborate and share information with the State of Hawaii to improve detection capabilities and maximize opportunities to prevent invasive species from entering the State. Recognizing the role of the U.S. Department of Homeland Security, we support agency interaction and collaboration, but in a manner that will not jeopardize our nation's national security initiatives.

Sincerely,

Heather Gallo
Executive Director, Hawaii Forest Industry Association



CALIFORNIA DEPARTMENT OF
FOOD & AGRICULTURE

A. G. Kawamura, Secretary

LATE
Testimony

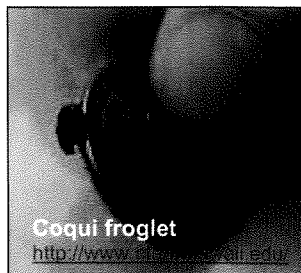
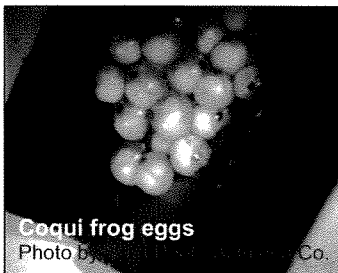
DATE: April 14, 2009
TO: All County Agricultural Commissioners
FROM: Plant Health and Pest Prevention Services
SUBJECT: **PEST EXCLUSION ADVISORY NO. 07-2009**
Coqui Frogs Intercepted on Plant Shipments from Hawaii

Coqui frogs have been intercepted several times in recent months on plant shipments from Hawaii. The purpose of this advisory is to inform county inspectors of CDFA's procedural policy for coqui frogs (*Eleutherodactylus coqui*).

Inspectors should carefully inspect all Hawaiian plant material for coqui frog life stages:

Coqui frogs often perch on twigs, between leaves in whorls, axils and folds, or in dead leaves hanging from the plant. They may also be found in protected cavities near the ground such as dead, curled leaves or rolled palm frond petioles. They are often found on broad-leaved plants, but they will use any leaf that will support their weight and provide cover. Coqui frogs often deposit egg clutches (see photo below taken by Alameda County inspectors) in leaf litter or in rolled or folded leaves near the ground.

In their native Puerto Rico, studies show that coqui frog eggs will develop, *undergoing the tadpole stage inside the egg*, in about 17-26 days and emerge as small but fully formed "froglets". In native environments, the time between clutches is about eight weeks.



Send any suspect samples to CDFA's Plant Pest Diagnostics Laboratory for identification:

For submission to the lab, frogs and eggs may be placed in vials containing isopropanol (isopropyl alcohol). Any additional specimens that are collected can be killed using any method, including freezing or mechanical destruction.

After a review of the biology of coqui frogs, it has been determined they are not agricultural pests. Therefore, all coqui frogs sent to the lab will be identified, but will not receive a rating from the CDFA Plant Pest Diagnostics Lab. Therefore, no action will be taken for coqui frog-infested shipments under the California Food and Agricultural Code statutes.

(Continued on next page)



Once the specimen has been identified as a coqui frog (*Eleutherodactylus coqui*), county inspectors may reject the infested shipment under:

1. Title 14 California Code of Regulations, Section 671

The California Fish and Game Commission's Wild Animal Policy (Title 14, Section 671 of the California Code of Regulations) makes it illegal to import, transport, or possess coqui frog in California without a permit. Under the Wild Animal Policy, coqui frogs have been designated as "detrimental animals" to our native wildlife and are prohibited entry into California.

2. Fish and Game Code, Section 2117

Fish and Game Code, Section 2117 provides the county agricultural commissioners with the authority to enforce the California Fish and Game Commission's Wild Animal Policy (Title 14, Section 671 of the California Code of Regulations).

Disposition Options for Rejected Shipments:

1. Treatment

There are currently no registered pesticides available in California for control of coqui frogs. Diluted citric acid has been used as a spot treatment in Hawaii for the control of coqui frogs. Hot water treatments have also been used by Hawaii's horticulture industry as an effective treatment. If treatment is selected as the disposition option, inspectors may view the information at the following sites:

- <http://www.ctahr.hawaii.edu/>: This is published by the University of Hawaii and provides humane methods of capture and disposal of coqui frog.
- http://www.hear.org/species/eleutherodactylus_coqui/: This site is a compilation of many websites with information on coqui frog identification, biology, and treatment.

2. Return Out of State

This option is to be used only if the **inspector considers the pest risk low and Interior Pest Exclusion Staff is contacted** to verify the receiving state will accept the shipment.

3. Destruction

For questions regarding this advisory, please contact Katie Filippini at (916) 654-0312 or by email at: kfilippini@cdfa.ca.gov.

"(1) *IN GENERAL.*—The Secretary shall reallocate to other States in accordance with paragraph (2) any amounts made available for a fiscal year under this section that are not obligated or expended by a date during that fiscal year determined by the Secretary.

"(2) *PRO RATA ALLOCATION.*—The Secretary shall allocate funds described in paragraph (1) pro rata to the remaining States that applied during the specified grant application period.

"(3) *USE OF REALLOCATED FUNDS.*—Funds allocated to a State under this subsection shall be used by the State only to carry out projects that were previously approved in the State plan of the State.

"(j) *FUNDING.*—Of the funds of the Commodity Credit Corporation, the Secretary of Agriculture shall make grants under this section, using—

"(1) \$10,000,000 for fiscal year 2008;

"(2) \$49,000,000 for fiscal year 2009; and

"(3) \$55,000,000 for each of fiscal years 2010 through 2012."

Subtitle B—Pest and Disease Management

SEC. 10201. PLANT PEST AND DISEASE MANAGEMENT AND DISASTER PREVENTION.

(a) *IN GENERAL.*—Subtitle A of the Plant Protection Act (7 U.S.C. 7711 et seq.) is amended by adding at the end the following:

"SEC. 420. PLANT PEST AND DISEASE MANAGEMENT AND DISASTER PREVENTION.

"(a) *DEFINITIONS.*—In this section:

"(1) *EARLY PLANT PEST DETECTION AND SURVEILLANCE.*—The term 'early plant pest detection and surveillance' means the full range of activities undertaken to find newly introduced plant pests, whether the plant pests are new to the United States or new to certain areas of the United States, before—

"(A) the plant pests become established; or

"(B) the plant pest infestations become too large and costly to eradicate or control.

"(2) *SPECIALTY CROP.*—The term 'specialty crop' has the meaning given the term in section 3 of the Specialty Crops Competitiveness Act of 2004 (7 U.S.C. 1621 note; Public Law 108-465).

"(3) *STATE DEPARTMENT OF AGRICULTURE.*—The term 'State department of agriculture' means an agency of a State that has a legal responsibility to perform early plant pest detection and surveillance activities.

"(b) *EARLY PLANT PEST DETECTION AND SURVEILLANCE IMPROVEMENT PROGRAM.*—

"(1) *COOPERATIVE AGREEMENTS.*—The Secretary shall enter into a cooperative agreement with each State department of agriculture that agrees to conduct early plant pest detection and surveillance activities.

"(2) *CONSULTATION.*—In carrying out this subsection, the Secretary shall consult with—

“(A) the National Plant Board; and

“(B) other interested parties.

“(3) FEDERAL ADVISORY COMMITTEE ACT.—The Federal Advisory Committee Act (5 U.S.C. App.) shall not apply to consultations under this subsection.

“(4) APPLICATION.—

“(A) IN GENERAL.—A State department of agriculture seeking to enter into a cooperative agreement under this subsection shall submit to the Secretary an application containing such information as the Secretary may require.

“(B) NOTIFICATION.—The Secretary shall notify applicants of—

“(i) the requirements to be imposed on a State department of agriculture for auditing of, and reporting on, the use of any funds provided by the Secretary under the cooperative agreement;

“(ii) the criteria to be used to ensure that early pest detection and surveillance activities supported under the cooperative agreement are based on sound scientific data or thorough risk assessments; and

“(iii) the means of identifying pathways of pest introductions.

“(5) USE OF FUNDS.—

“(A) PLANT PEST DETECTION AND SURVEILLANCE ACTIVITIES.—A State department of agriculture that receives funds under this subsection shall use the funds to carry out early plant pest detection and surveillance activities approved by the Secretary to prevent the introduction or spread of a plant pest.

“(B) SUBAGREEMENTS.—Nothing in this subsection prevents a State department of agriculture from using funds received under paragraph (4) to enter into subagreements with political subdivisions of the State that have legal responsibilities relating to agricultural plant pest and disease surveillance.

“(C) NON-FEDERAL SHARE.—The non-Federal share of the cost of carrying out a cooperative agreement under this section may be provided in-kind, including through provision of such indirect costs of the cooperative agreement as the Secretary considers to be appropriate.

“(D) ABILITY TO PROVIDE FUNDS.—The Secretary shall not take the ability to provide non-Federal costs to carry out a cooperative agreement entered into under subparagraph (A) into consideration when deciding whether to enter into a cooperative agreement with a State department of agriculture.

“(6) SPECIAL FUNDING CONSIDERATIONS.—The Secretary shall provide funds to a State department of agriculture if the Secretary determines that—

“(A) the State department of agriculture is in a State that has a high risk of being affected by 1 or more plant pests or diseases, taking into consideration—

“(i) the number of international ports of entry in the State;

"(ii) the volume of international passenger and cargo entry into the State;

"(iii) the geographic location of the State and if the location or types of agricultural commodities produced in the State are conducive to agricultural pest and disease establishment due to the climate, crop diversity, or natural resources (including unique plant species) of the State; and

"(iv) whether the Secretary has determined that an agricultural pest or disease in the State is a Federal concern ; and

"(B) the early plant pest detection and surveillance activities supported with the funds will likely—

"(i) prevent the introduction and establishment of plant pests; and

"(ii) provide a comprehensive approach to complement Federal detection efforts.

"(7) REPORTING REQUIREMENT.—Not later than 90 days after the date of completion of an early plant pest detection and surveillance activity conducted by a State department of agriculture using funds provided under this section, the State department of agriculture shall submit to the Secretary a report that describes the purposes and results of the activities.

"(c) THREAT IDENTIFICATION AND MITIGATION PROGRAM.—

"(1) ESTABLISHMENT.—The Secretary shall establish a threat identification and mitigation program to determine and address threats to the domestic production of crops.

"(2) REQUIREMENTS.—In conducting the program established under paragraph (1), the Secretary shall—

"(A) develop risk assessments of the potential threat to the agricultural industry of the United States from foreign sources;

"(B) collaborate with the National Plant Board; and

"(C) implement action plans for high consequence plant pest and diseases to assist in preventing the introduction and widespread dissemination of new plant pest and disease threats in the United States.

"(3) REPORTS.—Not later than 1 year after the date of enactment of this paragraph, and annually thereafter, the Secretary shall submit to the Committee on Agriculture of the House of Representatives and the Committee on Agriculture, Nutrition, and Forestry of the Senate a report on the action plans described in paragraph (2), including an accounting of funds expended on the action plans.

"(d) SPECIALTY CROP CERTIFICATION AND RISK MANAGEMENT SYSTEMS.—The Secretary shall provide funds and technical assistance to specialty crop growers, organizations representing specialty crop growers, and State and local agencies working with specialty crop growers and organizations for the development and implementation of—

"(1) audit-based certification systems, such as best management practices—

"(A) to address plant pests; and

"(B) to mitigate the risk of plant pests in the movement of plants and plant products; and

“(2) nursery plant pest risk management systems, in collaboration with the nursery industry, research institutions, and other appropriate entities—

“(A) to enable growers to identify and prioritize nursery plant pests and diseases of regulatory significance;

“(B) to prevent the introduction, establishment, and spread of those plant pests and diseases; and

“(C) to reduce the risk of and mitigate those plant pests and diseases.

“(e) FUNDING.—Of the funds of the Commodity Credit Corporation, the Secretary shall make available to carry out this section—

“(1) \$12,000,000 for fiscal year 2009;

“(2) \$45,000,000 for fiscal year 2010;

“(3) \$50,000,000 for fiscal year 2011; and

“(4) \$50,000,000 for fiscal year 2012 and each fiscal year thereafter.”

(b) CONGRESSIONAL DISAPPROVAL.—Congress disapproves the rule submitted by the Secretary of Agriculture relating to cost-sharing for animal and plant health emergency programs (68 Fed. Reg. 40541 (2003)), and such rule shall have no force or effect.

SEC. 10202. NATIONAL CLEAN PLANT NETWORK.

(a) IN GENERAL.—The Secretary shall establish a program to be known as the “National Clean Plant Network” (referred to in this section as the “Program”).

(b) REQUIREMENTS.—Under the Program, the Secretary shall establish a network of clean plant centers for diagnostic and pathogen elimination services to—

(1) produce clean propagative plant material; and

(2) maintain blocks of pathogen-tested plant material in sites located throughout the United States.

(c) AVAILABILITY OF CLEAN PLANT SOURCE MATERIAL.—Clean plant source material may be made available to—

(1) a State for a certified plant program of the State; and

(2) private nurseries and producers.

(d) CONSULTATION AND COLLABORATION.—In carrying out the Program, the Secretary shall—

(1) consult with State departments of agriculture, land grant universities, and NLGCA Institutions (as defined in section 1404 of the National Agricultural Research, Extension, and Teaching Policy Act of 1977 (7 U.S.C. 3103)); and

(2) to the extent practicable and with input from the appropriate State officials and industry representatives, use existing Federal or State facilities to serve as clean plant centers.

(e) FUNDING.—Of the funds of the Commodity Credit Corporation, the Secretary shall use to carry out the Program \$5,000,000 for each of fiscal years 2009 through 2012, to remain available until expended.

SEC. 10203. PLANT PROTECTION.

(a) REVIEW OF PAYMENT OF COMPENSATION.—Section 415(e) of the Plant Protection Act (7 U.S.C. 7715(e)) is amended in the second sentence by striking “of longer than 60 days”.

(b) SECRETARIAL DISCRETION.—Section 442(c) of the Plant Protection Act (7 U.S.C. 7772(c)) is amended by striking “of longer than 60 days”.

CONGRESS OF THE UNITED STATES

Washington, DC 20515

July 8, 2008

The Honorable Ed Shafer
Secretary
United States Department of Agriculture
1400 Independence Avenue SW
Washington, DC 20250

Dear Mr. Secretary:

We write to enlist your support for a cooperative agreement between your Department and the Hawaii Department of Agriculture as authorized in Section 10201 of the Food, Conservation, and Energy Act of 2008. In this section, the Congress authorizes cooperative agreements as part of an Early Plant Pest Detection and Surveillance Improvement Program. We believe that Hawaii offers an ideal location to demonstrate processes and procedures to find invasive plant pests new to the continental United States as well as our state of Hawaii.

While Hawaii satisfies multiple criteria for the awarding of cooperative agreements, two characteristics are especially prominent. First, Hawaii contains 25% of the organisms on the list of Threatened and Endangered Species, and this vulnerable biodiversity must be protected from invasive alien species. Unfortunately, many of Hawaii's unique plant and animal life is already extinct. In fact, of all the plants and birds known to be extinct in the U.S., two-thirds were from Hawaii.

Hawaii has been at high risk for new pest introduction in the past. The varroa mite is established on the Island of Oahu and now threatens honey bees statewide. This pest also endangers related industries including honey production, crop pollination, and queen bee export to markets worldwide. The Asian Citrus Psyllid entered Hawaii two years ago, and now threatens Hawaii crop shipments to California and other citrus producing states as a vector of the citrus greening disease now destroying the citrus industry in Florida. The light brown apple moth, which has been in Hawaii for over a hundred years, was recently discovered in California, (likely introduction from Australia, home range of the moth) and an eradication effort is now underway at a cost of over \$50 million. Reports prepared for Congress and the USDA have stated that invasive species are entering Hawaii two million times more rapidly than the natural rate, and establishing themselves in the islands five hundred times more often than any other state in the Nation.

Second, in Hawaii, the various federal, state, and local regulatory agencies are working together. A cooperative agreement that supports increased coordination among these agencies will improve the inspection process for plant pests and will have significant benefits to other ports of entry in the United States. These are some of the current collaborative activities:

- USDA-HDOA Pathway Risk Analysis - Evaluation of the pests currently being introduced into Hawaii; what risks they pose; where they originated; and what

threats to Hawaii are emerging in the next 10 to 20 years. This evaluation will help prioritize use of financial resources and determine which pathways need attention, and how best to design and fund prevention systems.

- USDA-HDOA Agricultural Quarantine Inspection Monitoring (AQIM) pilot – The long-term goal is to facilitate risk-based decision-making by both HDOA and USDA, using data that identifies risk factors associated with various entry pathways and commodities destined for arrival to the State. AQIM National Program leaders, Western Region officers, and HDOA are leading this project.
- Alien Species Action Plan (ASAP) at Kahului Airport – On-going prevention activities at the Kahului, Maui Airport include educational outreach, data information systems, risk assessments, and the first joint-use inspection facility.
- Joint-Use (federal-state) Inspection Facilities at Honolulu International Airport – Incorporates ASAP methodology for Honolulu. The port of Honolulu clears 95% of the passengers and cargo into the state. The objective is to accommodate the anticipated Guam military build-up in 2009-2010. The volume of cargo to depart Guam is expected to increase by as much as 600% over the next two years. Hawaii will become a major staging area for both commercial and military cargo. Prevention systems must be able to address invasive species, as this build-up will increase the invasive species pathway between the Asia-Pacific region and the West Coast.

At the local level, the Hawaii State Legislature recently passed a measure that establishes the Hawaii Biosecurity Program. The measure requires the department to create a multi dimensional system to:

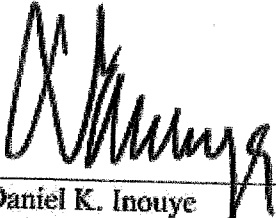
- Prevent the entry into the state and movement from island to island of pests and other illegal organisms;
- Respond effectively to eradicate, control, reduce, and suppress incipient and established pests and other illegal organisms;
- Work collaboratively with other state and federal government agencies and agricultural commodity groups to establish pest prevention programs; and
- Plan, design, and construct joint federal-state inspection facilities statewide.

In short, a cooperative agreement with Hawaii offers a unique opportunity to design an overarching prevention strategy that will benefit the nation and the state of Hawaii. By entering into a cooperative agreement to develop and implement an early plant pest detection and surveillance improvement program, we can set objectives and determine the best use of federal and state resources. A singular prevention method (singular inspection at the port) is no longer adequate. With an ever-expanding global market, multi-dimensional prevention systems that provide coordinated mitigation measures utilizing federal and state resources cohesively and comprehensively is a necessity. Such coordination and collaboration offer the best chance of protecting agriculture on the U.S. mainland and Hawaii, as well as Hawaii's unique biodiversity.

We urge you to support a cooperative agreement with the Hawaii Department of Agriculture to better manage plant pests and diseases, and in so doing, take a significant step toward preventing plant pest disasters to agriculture and the natural environment in the continental United States and the state of Hawaii.

Thank you for your consideration of our request.

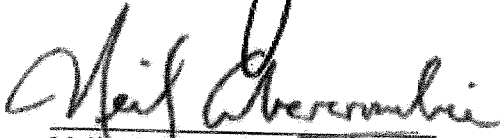
Sincerely,



Daniel K. Inouye
U.S. Senator



Daniel K. Akaka
U.S. Senator



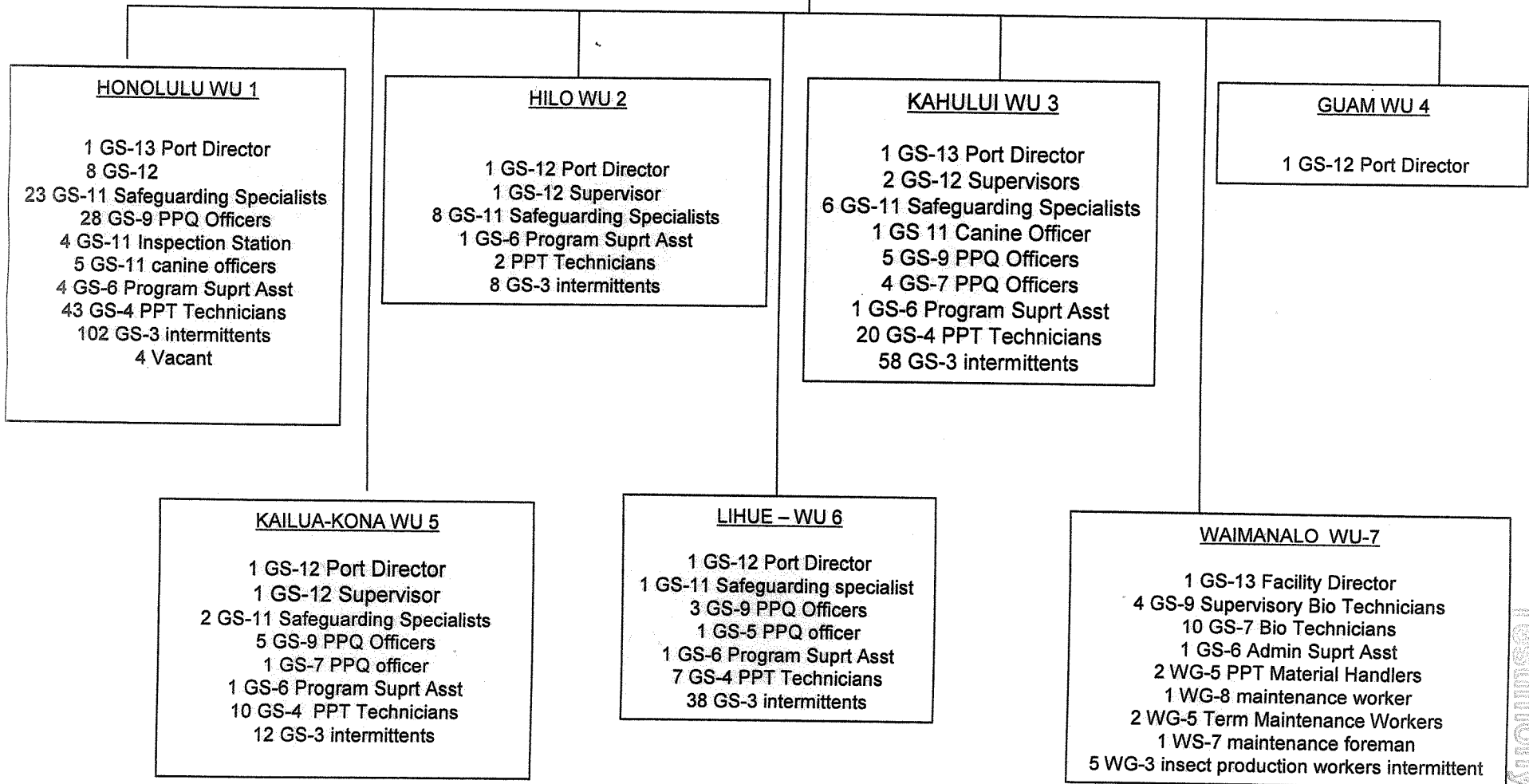
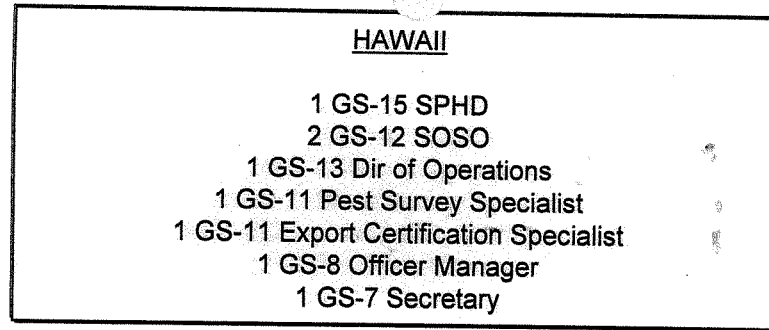
Neil Abercrombie
Member of Congress



Mazie Hirono
Member of Congress

Hawaii-PPQ
Structure Total = 458
FT = 151
PPT= 84
INT = 223
VAC= 4

June, 2005



Testimony
LATES



Vernon Harrington@aphis.us
da.gov

01:17:2006 08:21 AM

To "Lyle Wong" <Lyle.Wong@hawaii.gov>

cc

bcc

Subject Re: Ant Interceptions past five years

Hi Lyle,

Ken informed me that no foreign ant interceptions were reported for the past 5 years.

Vernon

Sent from my BlackBerry Wireless Handheld

----- Original Message -----

From: Lyle.Wong

Sent: 01/16/2006 06:25 PM

To: Vernon Harrington

Cc: carol.l.okada@hawaii.gov; Neil.j.Reimer@hawaii.gov

Subject: Ant Interceptions past five years

Vernon, any luck tracking down ant interceptions for the past five years?
Lyle

Lyle Wong, Ph.D.
Plant Industry Administrator
State of Hawaii, Dept. of Agriculture
1428 South King Street
Honolulu, HI 96814
tel: 808-973-9535
fax: 808-973-9533

PQ Ant Statewide Interceptions: Jan 2000 to Jan 2006

SCIENTIFIC NAME	HOST	DATE	SECTION	INF	ORIGIN	PATHWAY	NKO STATUS
? (Formicinae male)	Box, fish	14-Aug-2002	HIA	L	Thailand	AC	Y
? (Formicinae male)	fish box	16-Dec-2003	HIA	I	Taiwan	AC	Y
? (Myrmecinae male)	Box, fish	29-Mar-2000	HIA	L	Singapore	AC	Y
Amblyopone zwaluwenbergi	cut flowers, peonies	03-May-2004	HIA	I	California	AC	N
Anoplolepis gracilipes	At large	08-Mar-2001	KAUAI	H	Hawaii	L	N
Anoplolepis gracilipes	Container	07-Aug-2002	PIO	M	Hawaii	SC	N
Anoplolepis gracilipes	Feed	16-Dec-2003	PIO	H	CA	SC	N
Anoplolepis gracilipes	Feed	16-Dec-2003	PIO	H	California	SC	N
Anoplolepis gracilipes	Nursery	24-Sep-2003	PIO	M	Hawaii	N	N
Anoplolepis gracilipes	stative	17-May-2004	MAUI	I	California	AC	N
Anoplolepis longipes	Palm	05-Mar-2001	PIO	H	Hawaii	L	N
Brachymyrmex sp.	Ficus	08-Jun-2000	HILO	L	Florida	AC	Y
Brachymyrmex sp.	Flower, red ginger	11-Feb-2001	MAUI	L	Florida	AC	Y
Brachymyrmex sp. c.f. obscuror	Flower, cut	23-Jul-2004	MAUI	L	Hilo, HI	II	N
Camponotus variegatus	flower, galpini	29-Aug-2005	MAUI	I	California	AC	N
Camponotus modoc	Dry goods	27-Feb-2001	HILO	L	California	SC	Y
Camponotus pennsylvanicus	Household goods	19-May-2003	HILO	H	Georgia	SC	Y
Camponotus sp.	Box	15-Aug-2003	HIA	L	North Carolina	USM	Y
Camponotus sp.	Box, fish	03-Oct-2001	HIA	L	Indonesia	AC	Y

Wednesday, January 11, 2006

SCIENTIFIC NAME	HOST	DATE	SECTION	INF	ORIGIN	PATHWAY	NKO STATUS
Camponotus sp.	Bromeliad, tillandsia	31-May-2002	PIO	M	Florida	FE	Y
Camponotus sp.	Ficus	08-Jun-2000	HILO	L	Florida	AC	Y
Camponotus sp.	Ficus	08-Jun-2000	HILO	L	Florida	AC	Y
Camponotus sp.	Flower, peony	15-Jun-2002	HIA	L	Minnesota	B	Y
Camponotus sp.	Spinach	14-Jun-2000	MAUI	L	California	AC	Y
Camponotus sp. (male)	Box, fish	02-Apr-2003	HIA	L	Singapore	AC	Y
Camponotus sp. (male)	Box, fish	02-Apr-2003	HIA	L	Singapore	AC	Y
Camponotus variegatus	Box, cardboard	09-Oct-2001	HIA	L	Hawaii	L	N
Camponotus variegatus	Parsley	29-Sep-2000	MAUI	L	California	AC	N
Cardiocondyla nuda	Strawberry	12-Feb-2001	MAUI	L	California	AC	N
Cardiocondyla wroughtoni	Ficus	08-Jun-2000	HILO	L	Florida	AC	N
Cardiocondyla wroughtoni	Palm	05-Mar-2001	PIO	H	Hawaii	L	N
Crematogaster sp.	Cactus	10-Feb-2002	MAUI	L	Arizona	B	Y
Crematogaster sp.	Container	22-May-2003	KONA	L	California	SC	Y
Crematogaster sp.	Flower, cut	31-Aug-2003	HIA	L	California	AC	Y
Crematogaster sp.	Flower, cut	19-Oct-2003	HIA	L	California	AC	Y
Crematogaster sp. ? (queen)	Box, fish	02-Apr-2003	HIA	L	Singapore	AC	Y
Dolichoderus sp.	Coconut midrib brooms	28-Sep-2002	HIA	L	Philippines	B	Y
Dolichoderus sp.	Hard freight	09-Jan-2003	HIA	H	Philippines	AC	Y
Formica sp.	cartons, blue crab	16-Jun-2004	HIA	H	California	AC	Y
Formica sp.	Moss, sphagnum	18-Jul-2003	HIA	M	Florida	AC	Y

SCIENTIFIC NAME

SCIENTIFIC NAME	HOST	DATE	SECTION	INF	ORIGIN	PATHWAY	NKO STATUS
Formica sp	Plant	01-Jul-2001	HIA	L	California	B	Y
Formica sp.	Plum, sugar	27-Aug-2001	HIA	L	California	AC	Y
Lepidoptera sp.	Azalea	13-Nov-2001	HIA	L	Oregon	UPS	N
Leptogenys falcigera	Alfalfa	11-Mar-2002	KAUAI	L	Kauai	L	N
Linepithema humile	Artichoke	11-May-2000	HIA	H	California	B	N
Linepithema humile	Artichoke	21-Jun-2003	HIA	H	California	AC	N
Linepithema humile	Bean	12-Jul-2002	MAUI	L	California	AC	N
Linepithema humile	Bean	04-Aug-2003	HIA	M	California	AC	N
Linepithema humile	Box	25-May-2001	HIA	L	California	AC	Y
Linepithema humile	Cartons	07-Aug-2004	HIA	I	California	AC	N
Linepithema humile	Camp	06-Jun-2001	HIA	M	California	AC	N
Linepithema humile	Citrus, orange	30-Dec-2003	HIA	I	California	AC	N
Linepithema humile	Citrus, orange plant	27-Feb-2003	HIA	H	California	B	N
Linepithema humile	cut flowers	19-Jul-2004	MAUI	I	Honolulu, HI	UPS	N
Linepithema humile	Fig	30-Sep-2004	HIA	I	California	II	N
Linepithema humile	Flower	05-Jun-2000	HIA	L	California	AC	N
Linepithema humile	Flower	23-May-2004	MAUI	I	California	AC	N
Linepithema humile	Flower, aster	29-Jul-2003	HIA	H	California	AC	N
Linepithema humile	Flower, chrysanthemum	30-Nov-2000	MAUI	L	California	AC	Y
Linepithema humile	Flower, chrysanthemum	23-Oct-2001	HIA	L	California	AC	N
Linepithema humile	Flower, cut	09-May-2002	HIA	H	California	AC	Y
Linepithema humile	Flower, cut				California	AC	N

SCIENTIFIC NAME	HOST	DATE	SECTION	INF	ORIGIN	PATHWAY	NKO STATUS
Linepithema humile	Flower, cut	11-Sep-2002	HIA	M	California	AC	N
Linepithema humile	Flower, cut	31-Aug-2003	HIA	L	California	AC	Y
Linepithema humile	Flower, cut	19-Oct-2003	HIA	I	California	AC	N
Linepithema humile	flower, cymbidium	19-Jul-2005	HIA	H	California	FE	N
Linepithema humile	Flower, edible	29-Dec-2000	MAUI	L	California	AC	N
Linepithema humile	Flower, edible	09-Jul-2001	MAUI	L	California	AC	N
Linepithema humile	flower, ginger and heliconia	30-Aug-2005	MAUI	M	Hilo, HI	AC	N
Linepithema humile	flower, mix	14-Oct-2005	HIA	L	California	AC	N
Linepithema humile	Flower, pansy	11-Dec-2000	MAUI	H	California	AC	N
Linepithema humile	Flower, protea	09-Jun-2002	HIA	M	California	AC	N
Linepithema humile	Flower, protea	24-Aug-2005	HIA	M	California	AC	N
Linepithema humile	Flower, rice	18-May-2003	MAUI	H	California	AC	N
Linepithema humile	Flower, stock	22-Jul-2001	MAUI	L	California	AC	N
Linepithema humile	Flower, tropical	27-Aug-2005	MAUI	H	Hilo, HI	AC	N
Linepithema humile	Flower, wax	11-Feb-2001	MAUI	L	California	AC	N
Linepithema humile	Flower, wax	06-May-2001	MAUI	L	California	AC	N
Linepithema humile	Flower, wax	15-Jun-2004	HIA	I	California	AC	N
Linepithema humile	Flower, zucchini	29-May-2003	MAUI	L	California	AC	N
Linepithema humile	greens, dandelion	10-Aug-2005	KONA	L	California	AC	N
Linepithema humile	Guava	27-Nov-2000	MAUI	L	California	AC	N
Linepithema humile	Hibiscus	30-Jan-2003	HIA	L	California	AC	Y

SCIENTIFIC NAME

SCIENTIFIC NAME	HOST	DATE	SECTION	INF	ORIGIN	PATHWAY	NKO STATUS
Linepithema humile	Impatiens	17-Mar-2000	KAUAI	H	California	FE	N
Linepithema humile	Laurel	12-Aug-2000	HIA	M	California	AC	N
Linepithema humile	LD3	19-Dec-2000	HIA	H	California	AC	N
Linepithema humile	ld8	14-Jul-2004	HIA		California	AC	N
Linepithema humile	Lettuce	29-Nov-2000	MAUI	L	California	AC	N
Linepithema humile	Lettuce, green leaf	02-Jul-2004	MAUI	I	California	AC	N
Linepithema humile	Lettuce, red	05-Dec-2000	MAUI	L	California	AC	N
Linepithema humile	Longan	17-Sep-2003	HIA	L	California	B	Y
Linepithema humile	Mango	27-Oct-2000	KAUAI	L	California	AC	N
Linepithema humile	Mushroom	10-Jul-2000	HIA	M	California	AC	N
Linepithema humile	Myrtle	11-Nov-2000	MAUI	L	California	AC	N
Linepithema humile	Orchid	11-Jun-2002	HIA	H	California	B	N
Linepithema humile	Orchid, Cymbidium	15-May-2003	MAUI	L	California	AC	N
Linepithema humile	Oregonia	02-Apr-2004	MAUI		Oregon	AC	N
Linepithema humile	Pea	13-Dec-2000	MAUI	L	California	AC	N
Linepithema humile	Pepper, red bell	21-Oct-2003	MAUI	M	California	AC	N
Linepithema humile	Persimmon	15-Oct-2000	HIA	H	California	B	N
Linepithema humile	Persimmon	24-Oct-2000	HIA	L	California	AC	N
Linepithema humile	Persimmon	28-Oct-2000	HIA	L	California	UPS	N
Linepithema humile	Persimmon	04-Nov-2000	HIA	H	California	AC	N
Linepithema humile	Persimmon	04-Nov-2000	MAUI	L	California	AC	N

Wednesday, January 11, 2006

SCIENTIFIC NAME	HOST	DATE	SECTION	INF	ORIGIN	PATHWAY	NK STATUS
Linepithema humile	Persimmon	06-Nov-2000	HIA	M	California	UPS	N
Linepithema humile	Persimmon	06-Nov-2000	MAUI	L	California	AC	N
Linepithema humile	Persimmon	11-Nov-2000	MAUI	L	California	AC	N
Linepithema humile	Persimmon	13-Nov-2000	MAUI	L	California	AC	N
Linepithema humile	Persimmon	17-Nov-2000	MAUI	L	California	AC	N
Linepithema humile	Persimmon	14-Nov-2001	HIA	L	California	AC	Y
Linepithema humile	Persimmon	15-Nov-2001	HIA	L	California	SC	Y
Linepithema humile	Persimmon	09-Dec-2001	HIA	H	California	AC	Y
Linepithema humile	Persimmon	13-Dec-2001	MAUI	L	California	B	N
Linepithema humile	Persimmon	26-Oct-2002	MAUI	L	California	B	N
Linepithema humile	Persimmon	30-Oct-2002	HIA	M	California	B	N
Linepithema humile	Persimmon	03-Nov-2002	HIA	M	California	B	N
Linepithema humile	Persimmon	03-Nov-2002	HIA	L	California	B	N
Linepithema humile	Persimmon	04-Nov-2002	HIA	M	California	B	N
Linepithema humile	Persimmon	10-Nov-2002	HIA	H	California	AC	N
Linepithema humile	Persimmon	19-Nov-2002	HIA	H	California	B	N
Linepithema humile	Persimmon	22-Oct-2003	HIA	I	California	AC	Y
Linepithema humile	Persimmon	05-Dec-2003	MAUI	M	California	AC	N
Linepithema humile	Persimmon	13-Oct-2004	HIA	H	California	B	N
Linepithema humile	Persimmon	18-Oct-2004	MAUI	I	California	AC	N
Linepithema humile	Persimmon	22-Oct-2005	HIA	H	California	AC	N

SCIENTIFIC NAME	HOST	DATE	SECTION	INF	ORIGIN	PATHWAY	NKO STATUS
Linepithema humile	plant, plumbago	03-May-2005	HIA	L	California	AC	N
Linepithema humile	Plum, sugar	27-Aug-2001	HIA	L	California	AC	N
Linepithema humile	Produce	04-Aug-2000	HIA	H	California	AC	N
Linepithema humile	Protea	16-Jun-2002	HIA	H	California	AC	N
Linepithema humile	rasb	07-Sep-2005	MAUI	I	California	AC	N
Linepithema humile	ruscus	16-May-2004	MAUI			II	N
Linepithema humile	Seedling	07-Aug-2003	HIA	H	California	FE	Y
Linepithema humile	seedling, vegetable	30-Sep-2004	HIA	L	California	FE	N
Linepithema humile	Squash	18-Jul-2001	MAUI	L	California	AC	N
Linepithema humile	Stance	21-May-2004	MAUI	H	Honolulu, HI	AC	N
Linepithema humile	Succulant	03-Oct-2001	HIA	M	California	AC	N
Linepithema humile	Succulant	17-Jan-2003	HIA	L	California	AC	N
Linepithema humile	Sugar Plums	23-Jul-2000	HIA	H	California	AC	N
Linepithema humile	sugarcane	17-May-2004	MAUI			II	N
Linepithema humile	ti leaf	27-Jul-2004	MAUI	I	Hilo, HI	II	N
Linepithema humile	Tomato, yellow pear	09-Sep-2002	MAUI	L	California	AC	N
Linepithema humile (Mayr)	mangolds, cut	02-Nov-2003	MAUI	I	California	AC	N
Monomorium destructor	Box, cardboard	12-Sep-2003	PIO	H	?	SC	N
Monomorium destructor	Feed	13-Jun-2000	HIA	L	California	SC	N
Monomorium destructor	Feed	11-Sep-2001	PIO	L	Oregon	SC	N
Monomorium destructor	Feed	21-Jul-2003	PIO	?	California	SC	N

SCIENTIFIC NAME	HOST	DATE	SECTION	INF	ORIGIN	PATHWAY	NKO STATUS
Monomorium destructor	fish, dried	15-Apr-2004	KONA	I	Philippines	b	N
Monomorium destructor	Foodstuffs	22-Apr-2004	KONA	M	Philippines	B	N
Monomorium destructor	Hibiscus	28-Aug-2001	HIA	L	Florida	AC	N
Monomorium destructor	Lettuce	29-Sep-2000	MAUI	L	California	AC	N
Monomorium destructor	Nursery	21-Feb-2002	PIO	NA	Hawaii	N	N
Monomorium destructor	Nursery	04-Jun-2002	PIO	NA	Hawaii	N	N
Monomorium destructor	Nursery	16-Jan-2003	PIO	H	Hawaii	L	N
Monomorium destructor	Nursery	27-Aug-2003	PIO	II	Hawaii	N	N
Monomorium destructor	Potash	02-Jul-2002	PIO	L	California	SC	N
Monomorium destructor	POV	23-May-2003	PIO	H	California	SC	N
Monomorium floricola	Nursery	25-Nov-2002	MAUI	NA	Hawaii	N	N
Monomorium floricola	Tomato	08-Feb-2001	MAUI	L	California	AC	N
Monomorium pharaonis	Auto part	30-May-2000	KONA	M	California	AC	N
Monomorium pharaonis	Box	20-Apr-2000	HIA	H	Philippines	AC	N
Monomorium pharaonis	Box, fish	18-Jun-2003	HIA	L	Indonesia	AC	N
Monomorium pharaonis	Clothes	06-Jul-2001	HIA	L	Vietnam	AC	N
Monomorium pharaonis	Nursery	17-Apr-2002	PIO	NA	Hawaii	N	N
Monomorium pharaonis	Suitcase	26-Aug-2003	HIA	H	Thailand	B	N
Monomorium sp.	Bamboo	15-May-2001	KONA	M	Philippines	AC	Y
Monomorium sp.	Flower, red ginger	11-Feb-2001	MAUI	L	Florida	AC	Y
Monomorium sp.	Orchid, seedlings	12-Mar-2003	HIA	L	Thailand	AC	Y

SCIENTIFIC NAME	HOST	DATE	SECTION	INF	ORIGIN	PATHWAY	NKO STATUS
Monomorium sp. nr. destructor	Lauhala mats	25-Jul-2000	KONA	M	Indonesia	AC	Y
Ochetellus glaber	Bromeliad	20-Nov-2001	PIO	L	Hawaii	N	N
Ochetellus glaber	Feed	29-May-2002	PIO	L	California	SC	N
Ochetellus glaber	Flower, cut	17-Jul-2004	MAUI	I	Hilo	II	N
Paratrechina bourbonica	At large	27-Apr-2000	PIO	L	Hawaii	N	N
Paratrechina bourbonica	Ficus	31-Aug-2001	HIA	L	Florida	AC	N
Paratrechina bourbonica	Nursery	01-Feb-2002	PIO	NA	Hawaii	N	N
Paratrechina bourbonica	Plants	28-Aug-2000	PIO	H	Hawaii	N	N
Paratrechina longicornis	?	06-Aug-2002	HIA	H	California	FE	N
Paratrechina longicornis	Aircraft	13-May-2005	MAUI		California	B	N
Paratrechina longicornis	Bonsai	25-Sep-2000	KAUAI	L	Hawaii	L	N
Paratrechina longicornis	Box, fish	08-Aug-2002	HIA	L	Singapore	AC	N
Paratrechina longicornis	Citrus	02-Aug-2002	HILO	H	California	USM	N
Paratrechina longicornis	Flower, cut	13-Jul-2004	MAUI	L	Hilo, HI	II	N
Paratrechina longicornis	Flower, mums	23-Mar-2005	HIA	L	California	AC	N
Paratrechina longicornis	Nursery	13-Jan-2003	MAUI	L	Hawaii	N	N
Paratrechina longicornis	POV	21-Jun-2002	PIO	M	Georgia	SC	N
Paratrechina longicornis	Watermelon box	29-Jan-2003	PIO	L	California	SC	N
Paratrechina sp.	Box, fish	03-Oct-2001	HIA	L	Indonesia	AC	Y
Paratrechina sp.	Flower, red ginger	11-Feb-2001	MAUI	L	Florida	AC	Y
Pheidole deutata	Schefflera	12-Jun-2005	HIA	I	California	AC	Y

SCIENTIFIC NAME HOST DATE SECTION INF ORIGIN PATHWAY NKO STATUS

Pheidole megacephala	At large	27-Apr-2000	PIO	L	Hawaii	N	N
Pheidole megacephala	At large	22-Mar-2001	PIO	M	Hawaii	N	N
Pheidole megacephala	Bonsai	25-Sep-2000	KAUAI	L	Hawaii	L	N
Pheidole megacephala	Bouganvillea	30-Mar-2005	HIA	H	Texas	AC	N
Pheidole megacephala	Box, fish	23-Feb-2003	HIA	L	Kiribati	AC	N
Pheidole megacephala	Box, fish	16-Jul-2003	HIA	L	Indonesia	AC	N
Pheidole megacephala	Bromeliad	05-Jul-2000	KONA	L	Florida	USM	N
Pheidole megacephala	feed, cattle	22-Jul-2004	KONA	H	California	SC	N
Pheidole megacephala	Ficus	08-Jun-2000	HILO	L	Florida	AC	N
Pheidole megacephala	Nursery	29-Mar-2000	PIO	NA	Hawaii	N	N
Pheidole megacephala	Nursery	12-Aug-2002	MAUI	NA	Hawaii	N	N
Pheidole megacephala	Nursery	19-Aug-2002	MAUI	M	Hawaii	N	N
Pheidole megacephala	Nursery	26-Aug-2002	MAUI	NA	Hawaii	N	N
Pheidole megacephala	Nursery	29-Aug-2002	MAUI	NA	Hawaii	N	N
Pheidole megacephala	Nursery	13-Jan-2003	MAUI	H	Hawaii	N	N
Pheidole megacephala	Nursery	21-Apr-2003	MAUI	H	Maui	N	N
Pheidole megacephala	Nursery	21-Jul-2003	MAUI	NA	Hawaii	N	N
Pheidole megacephala	Nursery	13-Sep-2003	MAUI	M	Hawaii	N	N
Pheidole megacephala	Palm	05-Mar-2001	PIO	H	Hawaii	L	N
Pheidole megacephala	Plant	22-Aug-2001	MAUI	L	California	AC	N
Pheidole megacephala	Plants	07-Jun-2000	MAUI	L	California	AC	N

SCIENTIFIC NAME	HOST	DATE	SECTION	INF	ORIGIN	PATHWAY	NKO STATUS
<i>Pheidole megacephala</i>	Plants	28-Aug-2000	PIO	H	Hawaii	N	N
<i>Pheidole megacephala</i>	Soil	29-Sep-2003	MAUI		Mau	N	N
<i>Pheidole sp.</i>	Bromeliad, tillandsia	07-Jan-2003	KONA	L	Florida	B	Y
<i>Pheidole sp.</i>	Flower, red ginger	11-Feb-2001	MAUI	L	Florida	AC	Y
<i>Plagiolepis alluaudi</i>	Heliconia	23-May-2003	HIA	H	Hawaii	B	N
<i>Plagiolepis alluaudi</i>	Palm	05-Mar-2001	PIO	H	Hawaii	L	N
<i>Polyrhachis sp.</i>	Box	31-Oct-2000	HIA	L	Jakarta	AC	Y
<i>Polyrhachis sp.</i>	Leaves	24-Nov-2000	HIA	L	Laos	USM	Y
<i>Prenolepis imparis</i>	Christmas tree	30-Nov-2003	PIO	M	California	SC	N
<i>Prenolepis imparis</i>	Christmas tree	01-Dec-2003	PIO			SC	Y
<i>Prenolepis imparis</i>	Christmas tree	01-Dec-2003	PIO	I	Pacific NW	SC	Y
<i>Prenolepis imparis</i>	Flower, cut	17-May-2000	HIA	L	Virginia	AC	Y
<i>Prenolepis sp.</i>	Christmas tree	02-Dec-2002	PIO	L	Oregon	SC	Y
<i>Preuolepis imparis</i>	Christmas tree	30-Nov-2003	PIO	h	Washington	SC	Y
<i>Pseudomyrmex gracilis</i>	Foliage, decorative	22-Sep-2001	MAUI	L	Florida	AC	N
<i>Solenopsis geminata</i>		08-Mar-2005	MAUI	H	California	AC	N
<i>Solenopsis geminata</i>	Alfalfa	18-Feb-2001	HIA	H	Washington	SC	N
<i>Solenopsis geminata</i>	Animal meal	21-Dec-2004	PIO	I	California	SC	N
<i>Solenopsis geminata</i>	At large	26-Feb-2001	MAUI	H	Hawaii	L	N
<i>Solenopsis geminata</i>	At large	19-Jul-2001	KONA	L	Hawaii	L	N
<i>Solenopsis geminata</i>	At large	15-Oct-2001	MAUI	H	Hawaii	N	N

Wednesday, January 11, 2006

SCIENTIFIC NAME	HOST	DATE	SECTION	INF	ORIGIN	PATHWAY	NKO STATUS
Solenopsis geminata	Barley	22-Sep-2003	PIO	L	California	SC	N
Solenopsis geminata	Cartons	23-Feb-2004	HIA		Republic of Kiribati	AC	N
Solenopsis geminata	Cartons	29-Mar-2005	HIA	I	Christmas Island	AC	N
Solenopsis geminata	clams	30-Aug-2005	HIA	L	California	AC	N
Solenopsis geminata	Crates	29-Jul-2003	KONA	H	Indonesia	AC	N
Solenopsis geminata	Crates	22-Dec-2003	HIA		California	AC	N
Solenopsis geminata	cut flowers	04-May-2004	HIA	M	California	AC	N
Solenopsis geminata	Feed	13-Jun-2000	HILO	L	Oregon	SC	N
Solenopsis geminata	Feed	16-Oct-2000	PIO	L	California	SC	N
Solenopsis geminata	Feed	06-Nov-2000	PIO	L	Oregon	SC	N
Solenopsis geminata	Feed	08-Nov-2000	PIO	L	Oregon	SC	N
Solenopsis geminata	Feed	22-Nov-2000	PIO	L	California	AC	N
Solenopsis geminata	Feed	17-Dec-2000	PIO	L	California	SC	N
Solenopsis geminata	Feed	12-Jun-2001	PIO	L	Hawaii	SC	N
Solenopsis geminata	Feed	13-Nov-2001	PIO	L	California	SC	N
Solenopsis geminata	Feed	13-Nov-2001	PIO	L	California	SC	N
Solenopsis geminata	Feed	15-Jan-2002	PIO	H	Hawaii	SC	N
Solenopsis geminata	Feed	12-Feb-2002	PIO	L	California	SC	N
Solenopsis geminata	Feed	05-Mar-2002	PIO	M	Hawaii	SC	N
Solenopsis geminata	Feed	02-Jul-2002	PIO	L	California	SC	N
Solenopsis geminata	Feed	03-Sep-2002	PIO	M	California	SC	N

SCIENTIFIC NAME	HOST	DATE	SECTION	INF	ORIGIN	PATHWAY	NKO STATUS
<i>Solenopsis geminata</i>	Feed	07-Nov-2002	PIO	M	California	SC	N
<i>Solenopsis geminata</i>	Feed	09-Dec-2002	PIO	L	Nebraska	SC	N
<i>Solenopsis geminata</i>	Feed	12-Dec-2002	PIO	L	California	SC	N
<i>Solenopsis geminata</i>	Feed	15-Apr-2003	PIO	L	California	SC	N
<i>Solenopsis geminata</i>	Feed	05-Aug-2003	PIO	L	Washington	SC	N
<i>Solenopsis geminata</i>	Feed	05-Aug-2003	PIO	L	Washington	SC	N
<i>Solenopsis geminata</i>	Feed	08-Sep-2003	PIO	H	California	SC	N
<i>Solenopsis geminata</i>	Feed	26-Sep-2003	MAUI	L	California	SC	N
<i>Solenopsis geminata</i>	Feed	29-Mar-2004	PIO		California	SC	N
<i>Solenopsis geminata</i>	Feed	30-Mar-2004	PIO		California	SC	N
<i>Solenopsis geminata</i>	Feed	21-Sep-2004	PIO	H	California	SC	N
<i>Solenopsis geminata</i>	Feed	28-Dec-2004	HIA	L	California	SC	N
<i>Solenopsis geminata</i>	Feed	25-Jul-2005	HIA	L	California	SC	N
<i>Solenopsis geminata</i>	feed, animal	26-Oct-2003	MAUI		California	SC	N
<i>Solenopsis geminata</i>	Flower, cut	03-May-2002	HIA	H	Texas	FE	N
<i>Solenopsis geminata</i>	Flower, protea	24-Sep-2004	MAUI	H	California	AC	N
<i>Solenopsis geminata</i>	General	04-Aug-2004	HIA	L	California	AC	N
<i>Solenopsis geminata</i>	Grain	17-May-2004	PIO	I	California	SC	N
<i>Solenopsis geminata</i>	Grass	29-Apr-2004	MAUI	H	Maui	L	N
<i>Solenopsis geminata</i>	Hay	28-Mar-2000	PIO	M	Washington	SC	N
<i>Solenopsis geminata</i>	Hay	28-Mar-2000	PIO	M	Washington	SC	N

Wednesday, January 11, 2006

SCIENTIFIC NAME	HOST	DATE	SECTION	INF	ORIGIN	PATHWAY	NKO STATUS
<i>Solenopsis geminata</i>	Hay	16-Aug-2002	HIA	L	California	SC	N
<i>Solenopsis geminata</i>	Hay	28-Oct-2002	PIO	L	California	SC	N
<i>Solenopsis geminata</i>	Hay	14-Nov-2002	PIO	H	California	SC	N
<i>Solenopsis geminata</i>	Hay	19-Feb-2003	PIO	H	California	SC	N
<i>Solenopsis geminata</i>	Lettuce, green	27-May-2004	MAUI	H	California	AC	N
<i>Solenopsis geminata</i>	mulch, horticultural	09-Aug-2004	HIA	L	Wellsville, KS	SC	N
<i>Solenopsis geminata</i>	Nursery	08-May-2000	PIO	NA	Hawaii	N	N
<i>Solenopsis geminata</i>	Nursery	08-May-2000	PIO	NA	Hawaii	N	N
<i>Solenopsis geminata</i>	Nursery	01-Feb-2002	PIO	NA	Hawaii	N	N
<i>Solenopsis geminata</i>	Nursery	04-Jun-2002	PIO	NA	Hawaii	N	N
<i>Solenopsis geminata</i>	Nursery	26-Sep-2002	PIO	NA	Hawaii	N	N
<i>Solenopsis geminata</i>	Nursery	21-Apr-2003	MAUI	H	Maui	N	N
<i>Solenopsis geminata</i>	Nursery	27-Aug-2003	PIO	H	Hawaii	N	N
<i>Solenopsis geminata</i>	Nursery	03-Aug-2004	HIA	L	Honolulu, HI	N	N
<i>Solenopsis geminata</i>	plant, cactus	07-Jul-2005	HIA	I	California	AC	N
<i>Solenopsis geminata</i>	Potting mix	13-Nov-2001	PIO	L	California	SC	N
<i>Solenopsis molesta</i>	Schefflera	12-Jun-2005	HIA	I	California	AC	Y
<i>Solenopsis papuana</i>	At large	15-Mar-2001	HILO	M	Hawaii	N	N
<i>Solenopsis papuana</i>	Nursery	26-Aug-2003	PIO	NA	Hawaii	N	?
<i>Solenopsis papuana</i>	Nursery	02-Oct-2003	HIA	I	California	N	N
<i>Solenopsis paupana</i>	Nursery	19-Apr-2004	MAUI	I	Maui	N	N

SCIENTIFIC NAME	HOST	DATE	SECTION	INF	ORIGIN	PATHWAY	NKO STATUS
Solenopsis sp.	Flower, rose	21-Mar-2005	HIA	L	Florida	AC	?
Tapinoma melanocephalum	Croton cuttings	31-May-2002	HIA	H	Guatemala	FE	N
Tapinoma melanocephalum	Flower, cut	13-Apr-2005	HIA	M	California	AC	N
Tapinoma melanocephalum	Flower, protea	24-Sep-2004	MAUI	H	California	AC	N
Tapinoma melanocephalum	Nursery	24-Sep-2003	PIO	M	Hawaii	N	N
Tapinoma melanocephalum	Nursery	13-Oct-2003	MAUI	L	Maui	N	N
Tapinoma melanocephalum	Orchid	14-Aug-2000	PIO	L	California	QR	n
Tapinoma melanocephalum	Orchid	09-Mar-2001	PIO	L	Florida	AC	N
Tapinoma melanocephalum	plant media	23-Aug-2004	HIA	L	Honolulu, HI	II	N
Tapinoma melanocephalum	Sansevieria	12-Jun-2003	PIO	H	Oahu	N	N
Tapinoma monomorium	chocolate	11-May-2005	KONA	H	California	SC	N
Tapinoma sp	Box, fish	14-Jun-2002	HIA	L	Philippines	AC	Y
Technomyrmex albipes	Orchid	31-May-2001	PIO	H	California	N	N
Technomyrmex albipes	Fern, leather leaf	21-Oct-2000	MAUI	M	Florida	AC	N
Technomyrmex albipes	Ficus	08-Jun-2000	HILO	L	Florida	AC	N
Technomyrmex albipes	lettuce, baby mix	29-May-2004	MAUI	H	Kamuela, HI	II	N
Technomyrmex albipes	Longan	07-Aug-2003	HIA	M	Florida	AC	N
Technomyrmex albipes	Nursery	06-Mar-2002	PIO	NA	Hawaii	N	N
Technomyrmex albipes	Nursery	07-Mar-2002	PIO	NA	Hawaii	N	N
Technomyrmex albipes	Nursery	21-Apr-2003	MAUI	H	Maui	N	N
Technomyrmex albipes	Orchid	24-Apr-2001	PIO	H	Hawaii	N	N

SCIENTIFIC NAME	HOST	DATE	SECTION	INF	ORIGIN	PATHWAY	NKSTATUS
<i>Technomyrmex albipes</i>	Orchid	11-Aug-2003	PIO	L	Hawaii	N	N
<i>Tetranorium bicarinatum</i>	Box, fish	14-Aug-2002	HIA	L	Thailand	AC	N
<i>Tetranorium bicarinatum</i>	Juniper greens	07-Dec-2004	MAUI	H	Seattle, WA	AC	N
<i>Tetranorium bicarinatum</i>	Nursery	01-Feb-2002	PIO	NA	Hawaii	N	N
<i>Tetranorium similissimum</i>	Nursery	04-Jun-2002	PIO	NA	Hawaii	N	N
<i>Tetranorium similissimum</i>	Nursery	13-Jan-2003	MAUI	L	Hawaii	N	N
<i>Tetranorium similissimum</i>	Nursery	05-May-2003	MAUI	L	Hawaii	N	N
<i>Tetranorium similissimum</i>	Nursery	26-Aug-2003	PIO	NA	Hawaii	N	N
<i>Tetranorium sp. (queen)</i>	Box, fish	02-Apr-2003	HIA	L	California	AC	Y
<i>Tetranorium tonganum</i>	Nursery	29-Mar-2004	MAUI	I	Maui	N	N
<i>Tetranorium tonganum</i>	Nursery	05-Apr-2004	MAUI	I	Maui	N	N
<i>Tetranorium bicarinatum</i>	Litope (Liliaceae)	29-Mar-2005	HIA	L	Florida	AC	N
Unknown sp.	Dracaena	10-Apr-2005	HIA	L	Georgia	AC	?
unknown sp.	Lettuce, romaine	05-May-2004	MAUI	H	California	AC	?
Unknown sp.	Lettuce, romaine	03-Jun-2005	HIA	I	California	AC	?
unknown sp.	Nursery	13-Oct-2003	MAUI	I	Wildmoor Orchids	N	?
Unknown sp.	Rhoeo discolor	12-Jun-2005	HIA	I	California	AC	Y
<i>Vollethovia</i> sp.	Crates	29-Jul-2003	KONA	L	Indonesia	AC	Y
<i>Wasmania auropunctata</i>	Longan	07-Aug-2003	HIA	M	Florida	AC	Y



Foreign Insect Interceptions

ORIGIN	HOST	DATE INTER- CEPTED	SCIENTIFIC NAME	FAMILY	DISPO- SITION	NKO STATUS	FILE NO
Africa	Wood, drum	22-Jul-1996	Heterobostrychus brunne	Bostrichidae	T/R	Y	60809
Africa	Wood, drum	22-Jul-1996	Lyctus africanus	Lyctidae	T/R	Y	60810
Australia	Bamboo	31-Oct-2002	?	Cheyletidae	Q	?	-02-1003
Australia	Bamboo	31-Oct-2002	Odonaspis greeni	Diaspididae	Q	N	-02-1003
Australia	Banksia menziesii		unknown	Gracillaridae	I/R	y	4RAII-12
Australia	Container	05-Jul-2001	?	Reduviidae	T/R	Y	62844
Australia	Container	05-Jul-2001	?	Chrysomelidae	T/R	Y	62845
Australia	Container	05-Jul-2001	?	Pholcidae	T/R	Y	62843
Australia	Flower, protea	20-Aug-2003	?	Coniopterygidae	T/D	?	63444B
Australia	Flower, protea	20-Aug-2003	?	Entomobryidae	T/D	?	63443
Australia	Flower, protea	20-Aug-2003	Aphis gossypii	Aphididae	T/D	N	63441
Australia	Flower, protea	20-Aug-2003	Psectroscliara sp.	Scatopsidae	T/D	?	63442
Australia	Flower, protea	20-Aug-2003	Thrips tabaci	Thripidae	T/D	N	63444A
Australia	grass, emu	16-May-2004		no insects found	I/R	?	4RAII-13
Australia	Protea	08-Oct-1998	?	Gnaphosidae	T/R	Y	62022
Australia	Protea	08-Oct-1998	?	Theridiidae	T/R	Y	62021
Australia	Protea	04-Nov-1998	?	Gnaphosidae	I/R	Y	62072
Australia	protea CF	16-May-2004	Anthicus sp.	Anthicidae	T/D	y	4RAII-12
Australia	protea CF	16-May-2004	Aspidiotus nerii	Diaspididae	T/D	y	4RAII-12
Australia	Strawberry	07-Nov-2000	?	(Hemiptera)	R/R	?	MRA-38C
Bahamas	Bromeliad	11-Apr-1997	Diaspis boisduvalii	Diaspididae	Q	N	L-97-21
Bahamas	Bromeliad	16-Jul-1997	Hemiberlesia palmae	Diaspididae	Q	N	L-97-35A
Bahamas	Bromeliad	05-Nov-1997	Diaspis boisduvalii	Diaspididae	T/R	N	L-97-61
Bahamas	Bromeliad	05-Nov-1997	Diaspis boisduvalii	Diaspididae	T/R	N	L-97-60
Bahamas	Bromeliad	05-Nov-1997	Diaspis boisduvalii	Diaspididae	T/R	N	L-97-62
Bahamas	Bromeliad	18-Nov-1997	Hemiberlesia palmae	Diaspididae	I/R	N	L-97-69
Bali	Box	25-Nov-1998	?	Anthocoridae	T/R	Y	62108
Bali	Box	25-Nov-1998	Ahasversus advena	Cucujidae	T/R	N	62107
Bali	Lauhala	11-Dec-1998	?	Anthocoridae	T/R	Y	K-98-260
Bali	Lauhala	11-Dec-1998	Monomorium destructor	Formicidae	T/R	N	K-98-261

ORIGIN	HOST	DATE INTER- CEPTED	SCIENTIFIC NAME	FAMILY	DISPO- SITION	NKO STATUS	FILE NO
Bali	Saffron	21-Nov-1995	<i>Lasioderma serricorne</i>	Anobiidae	I/R	N	D-95-112
BC, Canada	Plant bedding	07-Nov-1996	?	(Araneae)	I/R	Y	61019
BC, Canada	Plant bedding	07-Nov-1996	<i>Clogmia albipunctatus</i>	Psychodidae	I/R	N	61017
BC, Canada	Plant bedding	07-Nov-1996	<i>Limonia</i> sp.	Tipulidae	I/R	Y	61018
Belize	Psiguria	09-Mar-1999	<i>Saissetia coffeae</i>	Coccidae	T/R	N	L-99-19
Belize	Pterocarpus	20-Mar-2000	<i>Ferrisia virgata</i>	Pseudococcidae	Q	N	L-00-20
Borneo	Orchid	07-Jun-2001	<i>Orchidophilus aterrimus</i>	Curculionidae	Q	N	62812
Borneo	Orchid	07-Jun-2001	<i>Pycnosceles indicus</i>	Blaberidae	Q	N	62813
Brazil	Box, cardboard	11-Apr-1995	<i>Coptotermes</i> sp. prob. for	Rhinotermitidae	D	N	60177
Brazil	Orchid	18-Dec-1996	<i>Diaspis boisduvalii</i>	Diaspididae	Q	N	M-96-128
Brazil	Orchid	30-Jan-1997	<i>Pseudococcus importatus</i>	Pseudococcidae	T/R	Y	M-97-007
Brazil	Orchid	03-Jun-1997	<i>Pseudococcus microcircu</i>	Pseudococcidae	Q	Y	M-97-054
Brazil	pepper berry	29-Nov-2003	<i>Calopya rubra</i>	Psyllidae	T/D	n	M-03-745
Burma	Orchid	25-Feb-1998	?	Sciaridae	Q	?	61734
Canada	Container	04-Sep-1996	?	Theridiidae	I/R	Y	D-96-090
Canada	Container	22-Apr-2004	<i>Lestremia</i> sp.	Cecidomyiidae	I/R	?	63671
Canada	Flower, <i>Astilbe japoni</i>	20-Jul-1995	<i>Aphis</i> sp.	Aphididae	D	Y	60331a
Canada	Flower, <i>Astilbe japoni</i>	20-Jul-1995	<i>Macrosiphum euphorbia</i>	Aphididae	D	N	60331b
Canada	Orchid	28-Mar-2001	<i>Zosis geniculatus</i>	Uloboridae	R/R	N	I-01-032
Canada	Ornamental	07-May-1996	<i>Otiorthynchus sulcatus</i>	Curculionidae	I/R	N	60667
Canada	Pallet	22-Apr-2004	Unknown species	Anthomyiidae	I/R	?	63670
Canada	plant, zebra	13-May-2004	?	Lepidoptera	I/R	?	63719C
Canada	plant, zebra	13-May-2004	<i>Lestremia</i> sp.	Cecidomyiidae	I/R	?	63719B
Canada	plant, zebra	13-May-2004	<i>Planococcus citri</i>	Pseudococcidae	I/R	n	63719A
Canada	Plants	13-Sep-2000	(Lamiinae)	Cerambycidae	T/R	Y	62618
Canada	Plants	16-Jan-2003	<i>Limonia</i> sp.	Tipulidae	R/R	Y	63244
Canada	Poinsettia	14-Nov-2002	<i>Bemisia argentifolii</i>	Aleyrodidae	I/R	N	63199
Canada	Potted plants	14-Aug-2003	<i>Bradysia impatiens</i>	Sciaridae	R/R	N	63434
Canada	Potted plants	14-Aug-2003	<i>Limonia</i> sp.	Tipulidae	R/R	Y	63433
Canada	Pussywillow	20-Apr-2003	<i>Marmara</i> sp.	Gracillariidae	R/R	Y	M-03-150
Canada	Waffle plants	14-Aug-2003	<i>Bemisia argentifolii</i>	Aleyrodidae	R/R	N	63435
Chile	Avocado	26-Oct-2002	<i>Hemiberlesia lataniae</i>	Diaspididae	R/R	N	M-02-236

ORIGIN	HOST	DATE INTER- CEPTED	SCIENTIFIC NAME	FAMILY	DISPO- SITION	NKO STATUS	FILE NO
Chile	Avocado	28-Oct-2002	Hemiberlesia lataniae	Diaspididae	R/R	N	M-02-239
Chile	Avocado	04-Nov-2002	Hemiberlesia lataniae	Diaspididae	R/R	N	M-02-245
Chile	Avocado	13-Nov-2002	?	Labiduridae	R/R	Y	M-02-254
Chile	Avocado	13-Nov-2002	Hemiberlesia lataniae	Diaspididae	R/R	N	M-02-252
Chile	Avocado	19-Nov-2002	Urophorus humeralis	Nitidulidae	R/R	N	M-02-262
Chile	Avocado	25-Nov-2002	Hemiberlesia lataniae	Diaspididae	R/R	N	M-02-267
Chile	grapes, green	05-Mar-2004	Syrphus sp.	Syrphidae	I/R	?	K-04-002
Chile	Persimmon	25-May-1999	Pseudococcus calceolaria	Pseudococcidae	RE	Y	62291B
Chile	Persimmon	25-May-1999	Pseudococcus longispinu	Pseudococcidae	RE	N	62291A
Chile	Persimmon	25-Jun-2002	Pseudococcus longispinu	Pseudococcidae	R/R	N	M-02-145
Chile	Raspberry	28-Feb-2001	?	Blattidae	R/R	?	M-01-045
China	Bamboo	23-Aug-2000	?	Pteromalidae	T/D	?	I-00-080
China	Container	29-Jun-1995	?	Pholcidae	I/R	Y	60244
China	Container	29-Jun-1995	?	Pholcidae	I/R	Y	60245
China	Furniture	01-Jun-1995	Heterobostrichus aequali	Bostrichidae	D	N	60215
China	Stored food	20-Nov-1996	Dermestes maculatus	Dermestidae	I/R	N	61070
China	Stored food	20-Nov-1996	Sitophilus zeamais	Curculionidae	I/R	N	61069
China	Wood	23-Jul-1996	Xylopsocus flavipes	Bostrichidae	I/R	Y	60811
Christmas Isla	Box	12-Sep-1995	Eobia bicolor	Oedemeridae	I/R	N	60391
Christmas Isla	Box	12-Sep-1995	Pselaphanca apicata	Oedemeridae	I/R	N	60392
Christmas Isla	Box	25-Nov-1997	Paratrechina longicornis	Formicidae	I/R	N	61655
Christmas Isla	Box	12-Aug-2001	Eobia bicolor	Oedemeridae	I/R	N	62870
Cook Islands	Maile	22-Mar-1995	Orchamoplatus mammae	Aleyrodidae	R/R	N	60156
Costa Rica	Coffee	19-Feb-2002	(Cerambycinae)	Cerambycidae	R/R	?	K-02-03
Easter Island	NA	15-Jun-1998	Eristalis tenax	Syrphidae	T/D	N	61836
Ecuador	Banana	09-May-1995	?	Arctiidae	I/R	Y	60187
Ecuador	Banana	08-Jul-1995	Dysmicoccus sp. nr. bisp	Pseudococcidae	R/R	Y	60254
Ecuador	Banana	17-Mar-1997	Dysmicoccus sp. nr. bisp	Pseudococcidae	I/R	Y	61190
Ecuador	Banana	07-Nov-1997	?	Pseudococcidae	I/R	?	61631
Ecuador	Banana	23-Apr-1999	Dysmicoccus sp. nr. bisp	Pseudococcidae	T/D	Y	62212
Ecuador	Banana	18-May-1999	Dysmicoccus sp. nr. bisp	Pseudococcidae	T/D	Y	62270
Ecuador	Banana	03-Jun-1999	?	Pseudococcidae	I/R	?	62314

ORIGIN	HOST	DATE INTER- CEPTED	SCIENTIFIC NAME	FAMILY	DISPO- SITION	NKO STATUS	FILE NO
Ecuador	Banana	08-Jun-1999	?	Pseudococcidae	I/R	?	62316
Ecuador	Banana	08-Jun-1999	?	Pseudococcidae	I/R	?	62321A
Ecuador	Banana	12-Jun-1999	?	Pseudococcidae	RE	?	M-99-054
Ecuador	Banana	21-Jun-1999	Dysmicoccus sp. nr. bisp	Pseudococcidae	T/R	Y	K-99-78
Ecuador	Banana	26-Jun-1999	Dysmicoccus sp. nr. bisp	Pseudococcidae	T/R	Y	M-99-070
Ecuador	Banana	07-Jul-1999	Dysmicoccus sp. nr. bisp	Pseudococcidae	T/R	Y	M-99-063
Ecuador	Banana	13-Jul-1999	?	Pseudococcidae	I/R	?	K-99-95
Ecuador	Banana	16-Jul-1999	Antichloris viridis	Arctiidae	I/R	Y	62349
Ecuador	Banana	16-Jul-1999	Dysmicoccus brevipes	Pseudococcidae	I/R	N	62348
Ecuador	Banana	26-Jul-1999	Dysmicoccus sp. nr. bisp	Pseudococcidae	RE	Y	K-99-97
Ecuador	Banana	31-Dec-1999	?	Pseudococcidae	I/R	?	62462
Ecuador	Banana	14-Jan-2000	?(Subfamily Rutelinae)	Scarabaeidae	R/R	Y	M-00-003
Ecuador	Banana	23-Mar-2000	Dysmicoccus sp. nr. bisp	Pseudococcidae	R/R	Y	K-00-13
Ecuador	Banana	12-Oct-2000	Dysmicoccus sp. nr. bisp	Pseudococcidae	R/R	Y	MRA-253
Ecuador	Banana	14-Aug-2001	Dysmicoccus sp. nr. bisp	Pseudococcidae	R/R	Y	62876
Ecuador	Banana	05-Feb-2002	Gryllus sp.	Gryllidae	I/R	Y	62991
Ecuador	Banana	10-Apr-2003	Dysmicoccus sp. nr. bisp	Pseudococcidae	I/R	Y	63312
Ecuador	Flower, gypsophila	02-Jan-1996	Frankliniella occidentalis	Thripidae	I/R	N	60537
Fiji	Kava	05-May-1997	Alphitobius diaperinus	Tenebrionidae	I/R	N	4-97-0531
Fiji	Kava	05-May-1997	Tribolium castaneum	Tenebrionidae	I/R	N	4-97-053,
Fiji	Taro	13-Jan-1995	Paratrechina sp.	Formicidae	R/R	Y	60122
Fiji	Taro	04-Aug-1995	Pheidole fervens	Formicidae	T	N	60358
France	Box	03-Oct-1996	?	Theridiidae	I/R	Y	60912
Guam	?	17-Dec-1995	Trigonops sp.	Curculionidae	I/R	Y	60523
Guam	Aircraft	01-Jan-2002	?	Mycetophilidae	R/R	Y	62935
Guam	Aircraft	01-Jan-2002	?	Tettigoniidae	R/R	Y	62936
Guam	Aircraft	01-Jan-2002	?	Scarabaeidae	R/R	Y	62933
Guam	Aircraft	01-Jan-2002	?	Gryllidae	R/R	Y	62934
Guam	Aircraft	17-Oct-2002	?	Sphingidae	I/R	Y	63172
Guam	Betel nut	01-Sep-1996	?	Tipulidae	T/D	?	60860A
Guam	Coconut	29-Aug-1996	?	Sphaeroceridae	T/D	?	60849
Guam	Container	25-Jan-1996	Gryllus bimaculatus	Gryllidae	I/R	N	60559

ORIGIN	HOST	DATE INTER- CEPTED	SCIENTIFIC NAME	FAMILY	DISPO- SITION	NKO STATUS	FILE NO
Guam	LD3	05-Apr-1995	Dolichoderus sp.	Formicidae	D	Y	60173
Guam	Mail bag	14-Aug-2003	Isometrus maculatus	Buthidae	R/R	N	63439
Guam	n/a	22-Oct-2004	Protaetia orientalis	Scarabaeidae	I/R	n	63936
Guam	Orchid	13-Aug-2001	Aleurodicus dispersus	Aleyrodidae	Q	N	62873
Guam	Orchid	13-Aug-2001	Saissetia coffeae	Coccidae	Q	N	62872
Guam	Pallet	03-Jun-1999	(Eumeninae)	Vespidae	T/R	?	62312
Guam	Pallet	03-Jun-1999	?	Limacidae	T/R	?	62313
Guatemala	Banana	08-Jun-1999	Diaspis boisduvalii	Diaspididae	I/R	N	M-99-53E
Guatemala	Banana	08-Jun-1999	Pseudococcus elisae	Pseudococcidae	I/R	N	4-99-053
Guatemala	Croton cuttings	31-May-2002	Tapinoma melanocephal	Formicidae	RE	N	63079
Guatemala	Flower, limonium	07-May-2001	Frankliniella occidentalis	Thripidae	I/R	N	ARA-109
Guatemala	Flower, limonium	10-May-2001	Frankliniella occidentalis	Thripidae	R/R	N	ARA-113
Guatemala	Flower, statice	19-Jul-2001	Frankliniella occidentalis	Thripidae	R/R	N	ARA-126
Holland	Bouvardia	21-Oct-2001	Trialeurodes vaporarioru	Aleyrodidae	I/R	N	M-01-175
Holland	Flower, ageratum	15-Jul-2001	?	Araneidae	R/R	?	ARA-122
Holland	Flower, liliu	29-Apr-2001	?	Psychodidae	R/R	Y	RA-1024
Holland	Flower, liliu	29-Apr-2001	Bradysia sp.	Sciaridae	R/R	Y	RA-1024
Holland	Flower, lily	15-Jul-2001	?	Muscidae	R/R	Y	ARA-122
Hong Kong	Cargo	09-Feb-2004	Heteropoda	(Araneae) Heteropodid	NA	y	63624
Hong Kong	Container	11-Jul-1995	?	Theridiidae	R/R	Y	60267
Hong Kong	Container	11-Jul-1995	Psilochorus sp.	Pholcidae	R/R	Y	60266
Hungary	Candy	04-Feb-1997	Monomorium destructor	Formicidae	T/R	N	61150
India	Container	24-Nov-1998	?	(Collembola)	T/R	Y	62099
India	Container	24-Nov-1998	Technomyrmex albipes	Formicidae	T/R	N	62100B
India	Container	24-Nov-1998	Tetramorium lanuginosu	Formicidae	T/R	Y	62100A
India	Container	25-Nov-1998	?	Scutigeridae	T/R	Y	62105
India	Container	25-Nov-1998	?	Scolopendridae	T/R	Y	62106
Indonesia	Bamboo	08-Feb-1996	?	Asterolecaniidae	Q	?	4-96-020
Indonesia	Bamboo	06-Mar-1996	?	(Acari)	Q	?	4-96-030
Indonesia	Box	03-Jan-1996	Paratrechina longicornis	Formicidae	I/R	N	60539
Indonesia	Box	03-Jan-1996	Tapinoma sp.	Formicidae	I/R	Y	60538
Indonesia	Box	20-Feb-2001	?	Salticidae	R/R	Y	62732

ORIGIN	HOST	DATE INTER- CEPTED	SCIENTIFIC NAME	FAMILY	DISPO- SITION	NKO STATUS	FILE NO
Indonesia	Box, fish	03-Oct-2001	?	Termitidae	R/R	Y	62924
Indonesia	Box, fish	03-Oct-2001	Camponotus sp.	Formicidae	R/R	Y	62923
Indonesia	Box, fish	03-Oct-2001	Paratrechina sp.	Formicidae	R/R	Y	62925
Indonesia	Box, fish	01-Apr-2002	?	Staphylinidae	I/R	Y	63024
Indonesia	Box, fish	18-Jun-2003	Monomorium pharaonis	Formicidae	I/R	N	63352
Indonesia	Box, fish	16-Jul-2003	?	Linyphiidae	R/R	Y	63403
Indonesia	Box, fish	16-Jul-2003	Pheidole megacephala	Formicidae	R/R	N	63402
Indonesia	Coconut	28-Dec-1995	Ahasversus advena	Cucujidae	I/R	N	60533
Indonesia	Coconut, tiki stump	23-Jan-2003	Oryctes prob. rhinoceros	Scarabaeidae	T/D	Y	M-03-028
Indonesia	Container	20-May-1997	Pholcus sp.	Pholcidae	I/R	Y	61335
Indonesia	Container	20-May-1997	Smeringopus sp.	Pholcidae	I/R	Y	61336
Indonesia	Container	27-Mar-2001	Phocus phalangioides	Pholcidae	I/R	N	62758
Indonesia	Crates	29-Jul-2003	(Cryptorhynchinae)	Curculionidae	T/D	Y	K-03-043
Indonesia	Crates	29-Jul-2003	?	Brentidae	T/D	Y	K-03-044
Indonesia	Crates	29-Jul-2003	Solenopsis geminata	Formicidae	T/D	N	K-03-046
Indonesia	Crates	29-Jul-2003	Vollenhovia sp.	Formicidae	T/D	Y	K-03-047
Indonesia	Crates	29-Jul-2003	Xyleborus affinis	Scolytidae	T/D	N	K-03-045
Indonesia	Fish	12-Mar-2003	Carpophilus sp.	Nitidulidae	I/R	?	63275
Indonesia	Furniture, wood	18-Dec-1995	Heterobostrichus aequali	Bostrichidae	I/R	N	60522
Indonesia	Grass	16-Nov-1999	Paratrechina bourbonica	Formicidae	I/R	N	62435
Indonesia	Lauhala	05-Apr-1999	?	(Psocoptera)	T/R	Y	K-99-38
Indonesia	Lauhala	05-Apr-1999	?	Anthocoridae	T/R	Y	K-99-36
Indonesia	Lauhala	05-Apr-1999	Monomorium destructor	Formicidae	T/R	N	K-99-37
Indonesia	Lauhala mats	25-Jul-2000	?	(Psocoptera)	T/D	Y	K-00-59
Indonesia	Lauhala mats	25-Jul-2000	?	(Pseudoscorpiones)	T/D	Y	K-00-57
Indonesia	Lauhala mats	25-Jul-2000	?	Anthocoridae	T/D	Y	K-00-60
Indonesia	Lauhala mats	25-Jul-2000	?	(Psocoptera)	T/D	Y	K-00-62A
Indonesia	Lauhala mats	25-Jul-2000	Lyctus sp.	Lyctidae	T/D	Y	K-00-62B
Indonesia	Lauhala mats	25-Jul-2000	Monomorium sp. nr. dest	Formicidae	T/D	Y	K-00-61
Indonesia	Lauhala mats	25-Jul-2000	Pholcomma sp.	Theridiidae	T/D	Y	K-00-58
Indonesia	Orchid	19-Sep-1997	Tetranychus urticae	Tetranychidae	Q	N	61533
Indonesia	Palm, handicrafts	28-Apr-1997	?	Silvanidae	T/D	Y	61295

ORIGIN	HOST	DATE INTER- CEPTED	SCIENTIFIC NAME	FAMILY	DISPO- SITION	NKO STATUS	FILE NO
Italy	Citrus, orange (blood)	29-Apr-2004	Aonidiella aurantii	Diaspididae	T/D	y	M-04-360
Jakarta	Box	31-Oct-2000	?	Cryptophagidae	R/R	Y	62657
Jakarta	Box	31-Oct-2000	Polyrhachis sp.	Formicidae	R/R	Y	62656
Japan	Aircraft	07-Nov-2001	?	Sphingidae	R/R	Y	62943
Japan	At large	08-Jun-1999	?	Araneidae	I/R	Y	62315
Japan	LD3	27-Aug-1999	Neoscona sp.	Araneidae	I/R	Y	62387
Japan	Orchid	05-Oct-1995	Diaspis boisduvalii	Diaspididae	T/R	N	60411
Japan	Orchid	05-Oct-1995	Tetranychus sp. (telarius)	Tetranychidae	T/R	?	60412
Japan	Orchid	04-Apr-2003	?	Gelechiidae	R/R	Y	63300
Japan	Palm	19-Feb-1998	?	Coccinellidae	D	Y	61728
Japan	Palm	19-Feb-1998	?	Coccinellidae	D	Y	61729
Japan	Palm	19-Feb-1998	?	Aleyrodidae	D	Y	61727
Japan	Pear, Korean sand	15-Oct-1999	Pseudococcus comstocki	Pseudococcidae	RE	Y	62413
Kadena, Japan	cargo deck	20-Jul-2004	Popillia japonica	Scarabaeidae	I/R	y	63871
Kenya, Africa	Wood carvings	16-May-1997	Lyctus sp.	Lyctidae	T/R	Y	61338
Kiribati	Box	10-Feb-2000	Ananca bicolor	Oedemeridae	I/R	N	62474
Kiribati	Box	29-Jul-2001	Ananca sp.	Oedemeridae	R/R	Y	62866
Kiribati	Box, fish	11-Sep-1998	Apis mellifera	Apidae	I/R	N	61987
Kiribati	Box, fish	30-Sep-2001	?	Oedemeridae	R/R	Y	62921C
Kiribati	Box, fish	30-Sep-2001	?	Oedemeridae	R/R	Y	62921B
Kiribati	Box, fish	30-Sep-2001	?	Oedemeridae	R/R	Y	62921A
Kiribati	Box, fish	14-Jul-2002	?Oxalis sp.	Oedemeridae	I/R	Y	63112
Kiribati	Box, fish	01-Sep-2002	Chelisoches morio	Chelisochidae	I/R	N	63146
Kiribati	Box, fish	23-Feb-2003	?	Cerambycidae	R/R	Y	63258
Kiribati	Box, fish	23-Feb-2003	Pheidole megacephala	Formicidae	R/R	N	63259
Kiribati	Box, fish	31-Aug-2003	?	Eulophidae	R/R	Y	63458
Kiribati	Box, fish	31-Aug-2003	Psilochorus sp.	Pholcidae	R/R	Y	63459
Kiritimati Islan	Box, fish	06-Apr-2003	Apis mellifera	Apidae	I/R	N	63304
Korea	Box	18-Apr-1997	?	Tenebrionidae	T/R	Y	61271
Korea	Container	11-Jul-1995	?	Pisauridae	R/R	Y	60262
Korea	Container	11-Jul-1995	Attagenus sp.	Dermestidae	R/R	?	60264
Korea	Container	11-Jul-1995	Litargus sp.	Mycetophagidae	R/R	Y	60265

ORIGIN	HOST	DATE INTER- CEPTED	SCIENTIFIC NAME	FAMILY	DISPO- SITION	NKO STATUS	FILE NO
Korea	Container	11-Jul-1995	Scytodes thoracica	Scytodidae	R/R	Y	60263
Korea	Pear, Korean sand	21-Nov-1995	Pseudococcus comstocki	Pseudococcidae	RE	Y	60495
Korea	Pear, Korean sand	20-Nov-2000	?	(Oribatida)	RE	?	62680
Korea	Pear, Korean sand	20-Nov-2000	Pseudococcus comstocki	Pseudococcidae	RE	Y	62679
Laos	Leaves	24-Nov-2000	?	Lycosidae	T/D	Y	62687
Laos	Leaves	24-Nov-2000	?	Encyrtidae	T/D	Y	62688
Laos	Leaves	24-Nov-2000	Polyrhachis sp.	Formicidae	T/D	Y	62686
Madagascar	Palm Seed	03-Apr-2003	?	Nitidulidae	I/R	Y	63298
Malaysia	Banana	26-Jun-1995	Pseudococcus longispinu	Pseudococcidae	Q	N	60239
Malaysia	Cartons	16-Apr-1996	Necrobia rufipes	Cleridae	I/R	N	60648
Malaysia	Grass, turf	24-Jul-1996	Chorizococcus rostellum	Pseudococcidae	Q	N	60812
Malaysia	Grass, turf	27-Aug-1996	Chorizococcus rostellum	Pseudococcidae	Q	N	60848
Malaysia	Hoya	21-Oct-1998	Aspidiotus excisus	Diaspididae	T/R	Y	62043
Malaysia	Passiflora	26-Jun-1995	Tetranychus cinnabarinu	Tetranychidae	Q	N	60240
Marshall Isl.	Box	17-Jul-1998	Monomorium destructor	Formicidae	I/R	N	61903
Marshall Isl.	Box, fish	11-Apr-1997	Monomorium destructor	Formicidae	I/R	N	61260
Marshall Isl.	Pandanus	18-Jan-1995	?	Salticidae	I/R	?	60123
Mexico	Arrugula	08-Mar-1997	Myzus persicae	Aphididae	I/R	N	K-97-44
Mexico	Arrugula	28-May-2002	Brevicoryne brassicae	Aphididae	R/R	N	M-02-104
Mexico	Asparagas	01-Dec-2000	Thrips tabaci	Thripidae	I/R	N	MRA-615
Mexico	Bag	23-Mar-1998	Heteropoda venatoria	Heteropodidae	I/R	N	61764
Mexico	Basil	26-Mar-2002	(Plusiinae) sp. ?	Noctuidae	R/R	?	4-02-0561
Mexico	Basil	27-Mar-2002	Liriomyza sativae	Agromyzidae	T/D	N	4-02-072,
Mexico	Basil	23-Apr-2002	Liriomyza sp.	Agromyzidae	T/D	N	M-02-075
Mexico	Basil	30-Apr-2002	Liriomyza sativae	Agromyzidae	T/D	N	4-02-083(
Mexico	Basil	30-Apr-2002	Myzus persicae	Aphididae	T/D	N	4-02-083,
Mexico	Basil	01-May-2002	Liriomyza sativae	Agromyzidae	T/D	N	4-02-084,
Mexico	Basil	08-May-2002	Liriomyza sativae	Agromyzidae	T/D	N	4-02-120,
Mexico	Basil	16-May-2002	Liriomyza sativae	Agromyzidae	T/D	N	M-02-095
Mexico	Basil	26-May-2002	?	Aleyrodidae	T/D	Y	4-02-101(
Mexico	Basil	26-May-2002	Bemesia tabaci	Aleyrodidae	RE	N	4-02-119(
Mexico	Basil	26-May-2002	Liriomyza huidobrensis	Agromyzidae	RE	N	4-02-1191

ORIGIN	HOST	DATE INTER- CEPTED	SCIENTIFIC NAME	FAMILY	DISPO- SITION	NKO STATUS	FILE NO
Mexico	Basil	26-May-2002	Liriomyza sativae	Agromyzidae	T/D	N	1-02-101
Mexico	Basil	30-May-2002	Liriomyza sativae	Agromyzidae	T/D	N	1-02-137
Mexico	Basil	31-May-2002	Liriomyza sativae	Agromyzidae	RE	N	M-02-110
Mexico	Basil	03-Jun-2002	(Phytomyzinae) ?Calyco	Agromyzidae	RE	Y	1-02-1131
Mexico	Basil	03-Jun-2002	Liriomyza sativae	Agromyzidae	RE	N	1-02-113
Mexico	Basil	10-Jun-2002	Liriomyza sativae	Agromyzidae	RE	N	1-02-122
Mexico	Cabbage, kale	10-May-2001	Plutella xylostella	Plutellidae	T/D	N	62758B
Mexico	Cabbage, kale	10-May-2001	Trichoplusia ni	Noctuidae	T/D	N	62758A
Mexico	Chiso	14-Feb-2001	Myzus persicae	Aphididae	R/R	N	MRA-948
Mexico	Citrus, lime	07-Mar-2001	Marmara salicetella	Gracillariidae	R/R	Y	M-01-050
Mexico	Citrus, orange	04-May-2001	Marmara salicetella	Gracillariidae	R/R	Y	MRA-106
Mexico	Citrus, orange	24-May-2002	Marmara gulosa	Gracillariidae	RE	Y	M-02-102
Mexico	Citrus, orange	17-Mar-2003	Aonidiella aurantii	Diaspididae	R/R	Y	M-03-102
Mexico	Citrus, orange	18-Mar-2003	Aonidiella aurantii	Diaspididae	R/R	Y	M-03-103
Mexico	Corn	18-Jan-1995	Spodoptera frugiperda	Noctuidae	R/R	Y	K-95-01
Mexico	Corn	04-Jan-1997	Helicoverpa zea	Noctuidae	I/R	N	K-97-14
Mexico	Corn	03-Feb-1997	Carpophilus sp.	Nitidulidae	I/R	Y	M-97-012
Mexico	Corn	26-Nov-1997	Spodoptera frugiperda	Noctuidae	T/R	Y	M-97-148
Mexico	Corn	15-Jan-1998	?	Nitidulidae	RE	Y	1-98-0030
Mexico	Corn	15-Jan-1998	?	Nitidulidae	RE	Y	1-98-0031
Mexico	Corn	15-Jan-1998	Carpophilus sp.	Nitidulidae	RE	Y	1-98-003
Mexico	Corn	19-Jan-1998	?	Nitidulidae	T/D	Y	M-98-005
Mexico	Corn	04-Mar-1998	Helicoverpa zea	Noctuidae	I/R	N	K-98-35
Mexico	Corn	04-Mar-1998	Rhopalosiphum maidis	Aphididae	I/R	N	K-98-34
Mexico	Corn	28-Oct-1998	Rhopalosiphum maidis	Aphididae	I/R	N	M-98-077
Mexico	Corn	28-Oct-1998	Spodoptera frugiperda	Noctuidae	I/R	Y	M-98-078
Mexico	Corn	22-Mar-1999	Helicoverpa zea	Noctuidae	I/R	N	M-99-026
Mexico	Corn	03-Dec-1999	Helicoverpa zea	Noctuidae	I/R	N	K-99-163
Mexico	Corn	21-Mar-2000	Rhopalosiphum maidis	Aphididae	T/R	N	62493
Mexico	Corn	14-Feb-2001	Rhopalosiphum maidis	Aphididae	T/D	N	MRA-946
Mexico	Corn	13-Apr-2004	Rhopalosiphum padi	Aphididae	T/D	y	63660
Mexico	Corn	19-Apr-2004	Rhopalosiphum maidis	Aphididae	I/R	n	63669

ORIGIN	HOST	DATE INTER- CEPTED	SCIENTIFIC NAME	FAMILY	DISPO- SITION	NKO STATUS	FILE NO
Mexico	Epazote	03-May-1999	?	Gelichiidae	T/R	Y	K-99-58
Mexico	Epazote	03-May-1999	Myzus ornatus	Aphididae	T/R	N	K-99-60
Mexico	Epazote	03-May-1999	Orius sp.	Anthocoridae	T/R	Y	K-99-59
Mexico	Lettuce	11-Jun-1997	Macrosiphum euphorbia	Aphididae	I/R	N	M-97-060
Mexico	Lettuce	16-Jun-1997	?	Syrphidae	T/D	?	M-97-072
Mexico	Lettuce	16-Jun-1997	?	Scarabaeidae	T/D	Y	M-97-071
Mexico	Lettuce	16-Jun-1997	Brevicoryne brassicae	Aphididae	T/D	N	1-97-069
Mexico	Lettuce	16-Jun-1997	Macrosiphum euphorbia	Aphididae	T/D	N	1-97-0691
Mexico	Lettuce	16-Jun-1997	Trichoplusia ni	Noctuidae	T/D	N	M-97-070
Mexico	Lettuce	14-Jul-1997	Trichoplusia ni	Noctuidae	RE	N	M-97-094
Mexico	Lettuce	07-Dec-2000	Nasonovia ribisnigri	Aphididae	I/R	N	MRA-695
Mexico	Lettuce	08-Dec-2000	Macrosiphum euphorbia	Aphididae	I/R	N	MRA-708
Mexico	Lettuce	11-Dec-2000	Nasonovia ribisnigri	Aphididae	T/D	N	MRA-728
Mexico	Lettuce	05-Feb-2001	Nasonovia ribisnigri	Aphididae	T/D	N	MRA-865
Mexico	Lettuce	13-Feb-2001	?	Coccinellidae	T/D	?	1RA-9451
Mexico	Lettuce	13-Feb-2001	Nasonovia ribisnigri	Aphididae	T/D	N	1RA-945
Mexico	Lettuce, frisee	31-Jan-2001	?	Sciaridae	I/R	N	1RA-8211
Mexico	Lettuce, frisee	31-Jan-2001	?	Staphylinidae	R/R	Y	1RA-8211
Mexico	Lettuce, frisee	31-Jan-2001	Frankliniella occidentalis	Thripidae	I/R	N	1RA-8211
Mexico	Lettuce, frisee	31-Jan-2001	Myzus persicae	Aphididae	I/R	N	1RA-821
Mexico	Lettuce, frisee	31-Jan-2001	Nysius sp.	Lygaeidae	R/R	Y	1RA-8211
Mexico	Lettuce, green	25-Feb-2001	Blapstinus histricus	Tenebrionidae	R/R	N	62735
Mexico	Lettuce, lollo rosa	25-Apr-2003	Frankliniella occidentalis	Thripidae	RE	N	1-03-1701
Mexico	Lettuce, lollo rosa	25-Apr-2003	Nasonovia ribisnigri	Aphididae	RE	Y	1-03-170
Mexico	Lettuce, lollo rosa	26-Apr-2003	Nasonovia ribisnigri	Aphididae	RE	Y	M-03-163
Mexico	Lettuce, red	09-Feb-2001	Myzus persicae	Aphididae	T/D	N	MRA-913
Mexico	Lettuce, romaine	23-Mar-2004	Aphis gossypii	Aphididae	I/R	n	M-04-229
Mexico	Liriomyza huidobrensi	26-May-2002	Diglyphus intermedius	Eulophidae	RE	N	1-02-119
Mexico	Liriomyza sativae	26-May-2002	Opius sp.	Braconidae	T/D	N	1-02-1011
Mexico	Liriomyza sativae (bas	08-May-2002	Opius dissitus	Braconidae	T/D	N	1-02-1201
Mexico	Liriomyza sativae (bas	30-May-2002	Diglyphus intermedius	Eulophidae	T/D	N	1-02-1371
Mexico	Liriomyza sativae (bas	30-May-2002	Opius sp.	Braconidae	T/D	N	1-02-1371

ORIGIN	HOST	DATE INTER- CEPTED	SCIENTIFIC NAME	FAMILY	DISPO- SITION	NKO STATUS	FILE NO
Mexico	Liriomyza sativae (bas	10-Jun-2002	Opius dissitus	Braconidae	RE	N	4-02-1221
Mexico	Liriomyza sativae on b	30-Apr-2002	Opius dissitus	Braconidae	T/D	N	4-02-0831
Mexico	Liriomyza sativae on b	01-May-2002	Opius dissitus	Braconidae	T/D	N	4-02-0841
Mexico	Liriomyza sativae on B	27-Mar-2002	Diglyphus intermedius	Eulophidae	T/D	N	4-02-0721
Mexico	Liriomyza sativae on b	30-Apr-2002	Diglyphus intermedius	Eulophidae	T/D	N	4-02-0831
Mexico	lolla rosa	27-Apr-2004	Frankliniella occidentalis	Thripidae	RE	n	4-04-3461
Mexico	lolla rosa	05-May-2004	Delia sp.	Anthomyiidae	RE	?	M-04-346
Mexico	Mango	24-Aug-1995	Parlatoria pseudaspidiotu	Diaspididae	I/R	Y	M-95-123
Mexico	Mango	13-Aug-2003	Parlatoria pseudaspidiotu	Diaspididae	RE	Y	M-03-323
Mexico	Mango	20-Aug-2003	Parlatoria pseudaspidiotu	Diaspididae	R/R	Y	M-03-330
Mexico	Mint	14-Mar-1997	?	Salticidae	RE	Y	M-97-024
Mexico	Onion, green	21-Nov-2000	Liriomyza sp.	Agromyzidae	I/R	N	MRA-522
Mexico	Onion, green	07-May-2001	Liriomyza sp.	Agromyzidae	R/R	N	MRA-109
Mexico	Pea	30-Apr-2001	Liriomyza sp.	Agromyzidae	I/R	N	MRA-102
Mexico	Pepper, bell	07-Feb-1995	Spodoptera exigua	Noctuidae	R/R	N	K-95-05
Mexico	Pepper, bell	27-Mar-1995	Spodoptera exigua	Noctuidae	R/R	N	K-95-31
Mexico	Pepper, bell	03-Apr-1995	Spodoptera exigua	Noctuidae	R/R	N	60171
Mexico	Pepper, bell	17-Apr-1995	Spodoptera exigua	Noctuidae	R/R	N	K-95-33
Mexico	Pepper, bell	24-Apr-1995	Spodoptera exigua	Noctuidae	R/R	N	K-95-34
Mexico	Pepper, bell	03-May-1995	Spodoptera exigua	Noctuidae	R/R	N	K-95-56
Mexico	Pepper, bell	18-Jan-1996	Spodoptera exigua	Noctuidae	I/R	N	K-96-23
Mexico	Pepper, bell	13-Dec-1996	Spodoptera frugiperda	Noctuidae	T/R	Y	K-96-205
Mexico	Pepper, bell	11-Dec-2000	Myzus persicae	Aphididae	T/D	N	MRA-73C
Mexico	Pepper, bell	22-Mar-2001	Myzus persicae	Aphididae	T/D	N	62756
Mexico	Pepper, bell	24-Apr-2001	?	Pseudococcidae	R/R	?	MRA-995
Mexico	Pepper, bell	30-Apr-2001	?	(Diptera)	R/R	?	MRA-103
Mexico	Pepper, bell	30-Apr-2001	Carpophilus sp.	Nitidulidae	R/R	Y	MRA-103
Mexico	Pepper, bell	07-May-2001	?	Encyrtidae	R/R	Y	MRA-109
Mexico	Pepper, bell	07-May-2001	?	Staphylinidae	R/R	Y	MRA-109
Mexico	Pepper, bell	04-Dec-2003	Liriomyza huidobrensis	Agromyzidae	I/R	n	M-03-450
Mexico	Pepper, chili	26-Oct-1995	Blapstinus sp. pos. histri	Tenebrionidae	I/R	N	60452
Mexico	Pepper, chili	26-Oct-1995	Plodia interpunctella	Pyralidae	I/R	N	60453

ORIGIN	HOST	DATE INTER- CEPTED	SCIENTIFIC NAME	FAMILY	DISPO- SITION	NKO STATUS	FILE NO
Mexico	Pepper, pasilla	06-May-2004	Liriomyza sp.	Agromyzidae	RE	y	M-04-402
Mexico	Pepper, pasilla	07-May-2004	Liriomyza sp.	Agromyzidae	RE	y	M-04-403
Mexico	pepper, red bell	25-Nov-2003	Bactericera cockerelli	Psyllidae	Pd	y	63567
Mexico	pepper, red bell	25-Nov-2003	Bactericera cockerelli	Psyllidae	Pd	y	63568
Mexico	pepper, red bell	25-Nov-2003	Bactericera cockerelli	Psyllidae	Pd	y	63566
Mexico	Pepper, red bell	03-Mar-2004	Unknown species	Braconidae	RE	y	M-04-226
Mexico	Pepper, red bell	08-Mar-2004	unknown species	Braconidae	RE	y	M-04-225
Mexico	Pepper, red bell	19-Mar-2004	Liriomyza sp.	Agromyzidae	RE	y	1-04-223
Mexico	Pepper, red bell	19-Mar-2004	species unknown	Braconidae	RE	y	1-04-2231
Mexico	Pepper, red bell	19-Mar-2004	Tetreanychus sp.	Tetranychidae	R/R	?	1-04-221
Mexico	Pepper, red bell	26-Mar-2004	Liriomyza sp.	Agromyzidae	t/d	y	M-04-238
Mexico	Pepper, red bell	05-May-2004	Unable to ID, castings an	Aphididae	T/D	?	M-04-381
Mexico	Pepper, red bell	15-Oct-2004	Bactericera cockerelli	Psyllidae	T/D	y	1-04-109
Mexico	Pepper, red bell	15-Oct-2004	unknown	Coccinellidae	T/D	?	1-04-108
Mexico	Pepper, yellow bell	23-Mar-2004	Liriomyza sp.	Agromyzidae	I/R	y	m-04-227
Mexico	Raspberry	25-Nov-1997	?	Geometridae	T/R	Y	K-97-333
Mexico	Raspberry	25-Nov-1997	?	Syrphidae	T/R	Y	K-97-334
Mexico	Spring mix	01-May-2001	Liriomyza huidobrensis	Agromyzidae	T/D	N	RA-1046
Mexico	Spring mix	01-May-2001	Nasonovia ribisnigri	Aphididae	T/D	N	RA-1046
Mexico	Spring mix	03-Nov-2003	Diabrotica undecimpunct	Chrysomelidae	R/R	y	K-03-62
Mexico	Strawberry	07-Mar-2001	Chaetosiphon fragaefolii	Aphididae	T/D	Y	M-01-047
Mexico	Strawberry	10-Mar-2001	Chaetosiphon fragaefolii	Aphididae	T/D	Y	62745
Mexico	Strawberry	02-Apr-2001	Macrosiphum euphorbia	Aphididae	T/D	N	M-01-074
Mexico	Tomato, cherry	07-May-1996	Drosophila sp.	Drosophilidae	I/R	?	M-96-47
Midway Island	Crates	03-Apr-1997	Gnathaphanus picipes	Carabidae	T/R	N	61233
Midway Island	Crates	03-Apr-1997	Philonthus turbidus	Staphylinidae	T/R	N	61234
Narita, Japan	Aircraft	26-Aug-1998	(Acridinae)	Acrididae	Co	Y	61956
Netherlands	Container	22-Jan-1996	Achraearanea tepidarioru	Theridiidae	I/R	N	60556
New Zealand	?	05-Nov-1997	Oligotoma saundersii	Oligotomidae	I/R	N	61629
New Zealand	Box, clam	29-Nov-2002	(Pseudophyllinae)	Tettigoniidae	R/R	Y	63215
New Zealand	Box, clam	29-Nov-2002	? (specimen decayed)	(Lepidoptera)	R/R	?	63216
New Zealand	Cartons	26-Feb-2002	(Cerambycinae)	Cerambycidae	R/R	?	63000

ORIGIN	HOST	DATE INTER- CEPTED	SCIENTIFIC NAME	FAMILY	DISPO- SITION	NKO STATUS	FILE NO
New Zealand	Container	15-Mar-1995	Carpophilus humeralis	Nitidulidae	I/R	N	60149a
New Zealand	Container	15-Mar-1995	Sericoderus sp.	Corylophidae	I/R	Y	60149c
New Zealand	Container	15-Mar-1995	Typhaea stercorea	Mycetophagidae	I/R	N	60149b
New Zealand	Onion, green	15-Mar-1995	Drosophila sp.	Drosophilidae	I/R	N	60148
New Zealand	Seed	07-May-2001	Lasioderma serricorne	Anobiidae	T/D	N	62784
New Zealand	Strawberry	19-Dec-1997	Chaetosiphon fragaefolii	Aphididae	T/R	Y	61684
New Zealand	Strawberry	19-Dec-1997	Pseudopachybrachius vin	Lygaeidae	T/R	Y	61685
New Zealand	Strawberry	09-Dec-1998	Chaetosiphon fragaefolii	Aphididae	T/R	Y	K-98-266
New Zealand	Strawberry	15-Dec-1998	Chaetosiphon fragaefolii	Aphididae	T/R	Y	K-98-267
New Zealand	Strawberry	07-Nov-2000	Chaetosiphon fragaefolii	Aphididae	T/D	Y	MRA-375
New Zealand	Strawberry	04-Dec-2000	?	Anthocoridae	T/D	?	IRA-639J
New Zealand	Strawberry	04-Dec-2000	Chaetosiphon fragaefolii	Aphididae	T/D	Y	IRA-639,
New Zealand	Strawberry	06-Dec-2000	Chaetosiphon fragaefolii	Aphididae	T/D	Y	MRA-671
New Zealand	Strawberry	07-Dec-2000	Chaetosiphon fragaefolii	Aphididae	T/D	Y	IRA-698I
New Zealand	Strawberry	07-Dec-2000	Phytonemus pallidus	Tarsonemidae	T/D	N	IRA-698,
New Zealand	Strawberry	08-Dec-2000	?	Thripidae	T/D	?	MRA-712
New Zealand	Strawberry	08-Dec-2000	Chaetosiphon fragaefolii	Aphididae	T/D	Y	MRA-71C
New Zealand	Strawberry	08-Dec-2000	Phytonemus pallidus	Tarsonemidae	T/D	N	MRA-711
New Zealand	Strawberry	29-Jan-2001	Aphis gossypii	Aphididae	I/R	N	MRA-808
Nuku Hiva	Canoe	08-May-1995	?	Formicidae	T/R	?	60205
Nuku Hiva	Canoe	08-May-1995	?	(Araneae)	T/R	Y	60210
Nuku Hiva	Canoe	08-May-1995	?	(Coleoptera)	T/R	?	60203
Nuku Hiva	Canoe	08-May-1995	?	(Psocoptera)	T/R	?	60207
Nuku Hiva	Canoe	08-May-1995	?	Anthocoridae	T/R	?	60208
Nuku Hiva	Canoe	08-May-1995	?	Sciaridae	T/R	?	60200
Nuku Hiva	Canoe	08-May-1995	?	Salticidae	T/R	Y	60209
Nuku Hiva	Canoe	08-May-1995	?	Sphaeroceridae	T/R	?	60202
Nuku Hiva	Canoe	08-May-1995	?	Formicidae	T/R	?	60204
Nuku Hiva	Canoe	08-May-1995	Apotropina sp.	Chloropidae	T/R	Y	60199
Nuku Hiva	Canoe	08-May-1995	Cadrena sp.	Chloropidae	T/R	Y	60198
Nuku Hiva	Canoe	08-May-1995	Clasiopella uncinata	Ephydriidae	T/R	N	60197
Nuku Hiva	Canoe	08-May-1995	Drosophila immigrans	Drosophilidae	T/R	N	60201

ORIGIN	HOST	DATE INTER- CEPTED	SCIENTIFIC NAME	FAMILY	DISPO- SITION	NKO STATUS	FILE NO
Nuku Hiva	Canoe	08-May-1995	Periplaneta americana	Blattidae	T/R	N	60206
Panama	Zamia seed (Cycad)	07-Apr-1997	Araecerus fasciculatus	Anthribidae	T/D	N	L-97-17
Peru	Pallet	14-Jan-2003	?	Bostrichidae	T/R	Y	63240
Peru	Pallet	14-Jan-2003	Teretrius sp. ? (Abraeina	Histeridae	T/R	Y	63241
Philippines	?	19-Nov-1997	Heteropoda venatoria	Heteropodidae	I/R	N	61641
Philippines	At large	12-Feb-1998	Neoscona sp.	Araneidae	T/D	Y	61732
Philippines	Bamboo	15-May-2001	Monomorium sp.	Formicidae	T/D	Y	K-01-09
Philippines	Bamboo frames	27-Jun-2003	Typhaea stercorea	Mycetophagidae	R/R	N	63364
Philippines	Banana	08-Jul-2004	none	none	Co	?	04-04-1
Philippines	Box	15-Jul-1996	Monomorium pharaonis	Formicidae	I/R	N	60790
Philippines	Box	13-Oct-1997	Monomorium destructor	Formicidae	T/R	N	61580
Philippines	Box	24-Jun-1998	Monomorium destructor	Formicidae	T/D	N	61854
Philippines	Box	21-Aug-1998	Rhipicephalus sanguineu	Ixodidae	T/R	N	61949
Philippines	Box	21-Aug-1998	Tapinoma melanocephal	Formicidae	T/R	N	61950
Philippines	Box	20-Apr-2000	Monomorium pharaonis	Formicidae	T/R	N	62510
Philippines	Box, fish	14-Jun-2002	Tapinoma sp.	Formicidae	I/R	Y	63094
Philippines	broom, coconut midri	15-Jan-2004	unknown	Psocidae ?	T/D	y	04-02-01
Philippines	Cartons	29-Mar-1996	?	Salticidae	I/R	Y	60637
Philippines	Cartons	29-Mar-1996	Monomorium destructor	Formicidae	I/R	N	60638
Philippines	Coconut	21-Feb-1995	Monomorium pharaonis	Formicidae	D	N	60138a
Philippines	Coconut	21-Feb-1995	Monomorium sp. prob. d	Formicidae	D	?	60138b
Philippines	Coconut midrib broo	28-Sep-2002	Dolichoderus sp.	Formicidae	T/D	Y	63167
Philippines	Container	25-Jul-1995	Solenopsis geminata	Formicidae	I/R	N	60336
Philippines	fish, dried	15-Apr-2004	Monomorium destructor	Formicidae	I/R	n	K-04-004
Philippines	foodstuffs	22-Apr-2004	Monomorium destructor	Formicidae	I/R	n	K-04-005
Philippines	Garlic cloves	13-May-1996	Monomorium destructor	Formicidae	T/D	N	60670
Philippines	Hard freight	09-Jan-2003	Dolichoderus sp.	Formicidae	T/R	Y	63239
Philippines	Orchid	26-Jun-1995	Diaspis boisduvalii	Diaspididae	Q	N	60238
Philippines	Orchid	26-Jun-1995	Orchidophilus sp. prob. a	Curculionidae	Q	N	60241
Philippines	Orchid	26-Jun-1995	Pseudococcus longispinu	Pseudococcidae	Q	N	60237
Philippines	Straw broom	20-Oct-1997	Monomorium destructor	Formicidae	T/D	N	61608
Puerto Rico	Box	27-Jan-1999	Monomorium pharaonis	Formicidae	T/R	N	62149

ORIGIN	HOST	DATE INTER- CEPTED	SCIENTIFIC NAME	FAMILY	DISPO- SITION	NKO STATUS	FILE NO
Quarantine Ho	quarantine house	07-May-2004	Unknown species	Rhynchophorinae	I/R	y	63697
Republic of Ki	Cartons	23-Feb-2004	Solenopsis geminata	Formicidae	I/R	n	63632
Samoa	Handicrafts	11-Mar-1996	?	(Psocoptera)	T/R	?	60616C
Samoa	Handicrafts	11-Mar-1996	Monomorium pharaonis	Formicidae	T/R	N	60616A
Samoa	Handicrafts	11-Mar-1996	Psammoecus sp.	Cucujidae	T/R	Y	60616B
Scotland	Passiflora	05-May-1999	Tetranychus sp.	Tetranychidae	T/R	?	L-99-32
Scotland	Pterocarpus	30-Nov-1999	Ferrisia virgata	Pseudococcidae	Q	N	L-99-92
SE Asia	Banana	26-Mar-1997	Antichloris sp.	Arctiidae	I/R	Y	61213
Sicily, Italy	citrus, blood orange	28-Apr-2004	Aonidiella aurantii	Diaspididae	R/R	y	M-04-347
Sinaloa, Mexic	Pepper, red bell	29-Apr-2004		Araneae (probably)	R/R	?	M-04-366
Sinaloa, Mexic	Pepper, red bell	30-Apr-2004	Liriomyza sp.	Agromyzidae	RE	y	A-04-367I
Sinaloa, Mexic	Pepper, red bell	30-Apr-2004	Tetranychus sp.	Tetranychidae	RE	?	A-04-367;
Singapore	Baggage	13-Dec-1995	Tapinoma melanocephal	Formicidae	T/R	N	60509
Singapore	Bamboo flute	02-May-1996	Dinoderus minutus	Bostrichidae	I/R	N	60659
Singapore	Box	10-May-1995	(Psychodinae)	Psychodidae	I/R	Y	60189b
Singapore	Box	10-May-1995	?	Platypodidae	I/R	Y	60190
Singapore	Box	10-May-1995	?	Nabidae	I/R	Y	60193
Singapore	Box	10-May-1995	?	Achilidae	I/R	Y	60194
Singapore	Box	10-May-1995	?	Chironomidae	I/R	Y	60189a
Singapore	Box	10-May-1995	?(male)	Formicidae	I/R	Y	60191b
Singapore	Box	10-May-1995	Geotomus ? sp.	Cydnidae	I/R	Y	60192
Singapore	Box	10-May-1995	Monomorium pharaonis	Formicidae	I/R	N	60191a
Singapore	Box	31-May-1995	?	Formicidae	I/R	Y	60217
Singapore	Box	31-May-1995	?	Salticidae	I/R	Y	60218
Singapore	Box	24-Jan-1996	Camponotus sp.	Formicidae	I/R	Y	60557
Singapore	Box	24-Jan-1996	Tetramorium bicarinatu	Formicidae	I/R	N	60558
Singapore	Box	24-Apr-1996	Monomorium pharaonis	Formicidae	T/R	N	60656
Singapore	Box	01-Jul-1998	Tetramorium sp.	Formicidae	T/R	Y	61868
Singapore	Box, fish	14-Jun-1995	?	Staphylinidae	I/R	N	60228
Singapore	Box, fish	25-Sep-1996	?	Salticidae	I/R	Y	60891
Singapore	Box, fish	25-Sep-1996	?	Chironomidae	I/R	Y	60890
Singapore	Box, fish	09-Oct-1996	?	Lygaeidae	I/R	Y	60922

ORIGIN	HOST	DATE INTER-CEPTED	SCIENTIFIC NAME	FAMILY	DISPOSITION	NKO STATUS	FILE NO
Singapore	Box, fish	23-Oct-1996	?	Lygaeidae	I/R	Y	60973
Singapore	Box, fish	29-Mar-2000	? (Myrmecinae male)	Formicidae	R/R	Y	62502
Singapore	Box, fish	10-Jul-2002	Culiseta sp.	Culicidae	I/R	Y	63110
Singapore	Box, fish	08-Aug-2002	Paratrechina longicornis	Formicidae	I/R	N	63122
Singapore	Box, fish	02-Apr-2003	Camponotus sp. (male)	Formicidae	R/R	Y	63295B
Singapore	Box, fish	02-Apr-2003	Camponotus sp. (male)	Formicidae	R/R	Y	63295A
Singapore	Box, fish	02-Apr-2003	Crematogaster sp. ? (que	Formicidae	R/R	Y	63295C
Singapore	Orchid	07-Apr-1995	?	Ixodidae	R/R	?	60176
Tahiti	fish carton	28-Mar-2004	Homalodisea coagulata	Cicadellidae	I/R	y	63650
Taiwan	?	20-May-1998	Leptogenys falcigera	Formicidae	I/R	N	61821
Taiwan	Box	20-May-1998	(Podopinae)	Pentatomidae	I/R	Y	61822
Taiwan	Container	17-Jul-1995	?	Pholcidae	R/R	Y	60329
Taiwan	Container	08-Jan-1999	Polyrhachis sp. prob. div	Formicidae	RE	Y	62143
Taiwan	fish box	16-Dec-2003	?	Araneida	I/R	?	622600
Taiwan	fish box	16-Dec-2003	? (Formicinae male)	Formicidae	I/R	y	63599
Taiwan	fish box	16-Dec-2003	Culex sp.	Culicidae	I/R	?	63598
Thailand	At large	15-Apr-1999	Succinea sp.	Succineidae	T/D	Y	62209
Thailand	Bamboo	22-Mar-1999	Bambusaspis robustum	Asterolecaniidae	Q	N	1-99-030
Thailand	Box	09-Mar-1995	Anochetus sp.	Formicidae	I/R	Y	60144
Thailand	Box	29-Aug-1996	Monomorium destructor	Formicidae	I/R	N	60850
Thailand	Box	18-Aug-1999	?	Psocidae	T/R	?	62382
Thailand	Box	18-Aug-1999	?	Blattidae	T/R	?	62379
Thailand	Box	18-Aug-1999	?	Anthocoridae	T/R	?	62381
Thailand	Box	18-Aug-1999	Sivanus bidentatus	Silvanidae	T/R	N	62380
Thailand	Box, fish	14-Aug-2002	? (Formicinae male)	Formicidae	I/R	Y	63128B
Thailand	Box, fish	14-Aug-2002	Tetramorium bicarinatu	Formicidae	I/R	N	63128A
Thailand	Container	29-Mar-1995	?	Pholcidae	I/R	?	60166a
Thailand	Container	29-Mar-1995	Zosis geniculatus	Uloboridae	I/R	N	60166b
Thailand	Crates	05-Aug-1997	Sinoxylon conigerum	Bostrichidae	I/R	N	61426
Thailand	Dead cat	22-Jul-2002	Megaselia scalaris	Phoridae	I/R	N	63113
Thailand	Orchid	15-Mar-1995	?	(Collembola)	Q	?	60147
Thailand	Orchid	01-Nov-1995	Andaspis mackieana	Diaspididae	Q	N	60462B

ORIGIN	HOST	DATE INTER- CEPTED	SCIENTIFIC NAME	FAMILY	DISPO- SITION	NKO STATUS	FILE NO
Thailand	Orchid	01-Nov-1995	Furcaspis biformis	Diaspididae	Q	N	60462A
Thailand	Orchid	15-May-1996	Tapinoma melanocephal	Formicidae	Q	N	60674
Thailand	Orchid	16-May-1996	(Formicinae)	Formicidae	Q	Y	1-96-050
Thailand	Orchid	16-May-1996	?	Carabidae	Q	Y	1-96-050
Thailand	Orchid	16-May-1996	?	Elateridae	Q	Y	1-96-050
Thailand	Orchid	16-May-1996	Adoretus sinicus	Scarabaeidae	Q	N	1-96-050
Thailand	Orchid	16-May-1996	Cylas formicarius	Apionidae	Q	N	1-96-050
Thailand	Orchid	16-May-1996	Ectomocoris biguttulus	Reduviidae	Q	N	1-96-050
Thailand	Orchid	09-Jul-1996	Technomyrmex albipes	Formicidae	Q	N	60781
Thailand	Orchid	15-Jul-1996	?	Bruchidae	Q	Y	60788
Thailand	Orchid	04-Feb-1997	Pseudococcus sp.	Pseudococcidae	Q	?	61148
Thailand	Orchid	26-Feb-1997	Camponotus (Colobopsis	Formicidae	Q	Y	61169
Thailand	Orchid	25-Mar-1997	Bradysia sp.	Sciaridae	Q	?	61208
Thailand	Orchid	04-Jun-2001	?	Scirtidae	R/R	Y	62803
Thailand	Orchid	15-Aug-2001	Attagenus fasciatus	Dermestidae	Q	N	62878
Thailand	Orchid	27-Aug-2001	Attagenus fasciatus	Dermestidae	Q	N	62885
Thailand	Orchid	07-Jan-2002	Diaspis boisduvalii	Diaspididae	Q	N	62979
Thailand	Orchid	07-Jan-2002	Diaspis boisduvalii	Diaspididae	Q	N	62978
Thailand	Orchid	18-Oct-2002	?(Epyrinae)	Bethylidae	NA	Y	63173
Thailand	Orchid	12-May-2004	Plexipus paykulii	Salticidae	I/R	n	63701
Thailand	Orchid, Dendrobium	05-Mar-1996	Succinea sp.	Succineidae	T/D	Y	60611
Thailand	Orchid, seedlings	12-Mar-2003	Monomorium sp.	Formicidae	T	Y	63277
Thailand	Palm	24-Sep-1996	Paratrechina sp. prob. bo	Formicidae	I/R	N	60884
Thailand	Quarantine Room 1	12-Apr-2004	Polistes exclamans	Vespidae	I/R	n	63664
Thailand	Rice	17-May-1996	Tribolium confusum	Tenebrionidae	I/R	N	60677
Thailand	Suitcase	26-Aug-2003	Monomorium pharaonis	Formicidae	T	N	63452
Thailand	Tile	03-Apr-1995	?	Pholcidae	I/R	Y	60170
Thailand	Wood, crate	11-Jul-1996	Synoxylon contigerum	Bostrichidae	I/R	N	60787
Thailand?	Orchid	12-Feb-1996	Monomorium floricola	Formicidae	Q	N	60586
Thailand?	Orchid	09-Aug-1996	?	(Lepidoptera)	Q	?	60834
Thailand?	Orchid	09-Aug-1996	Gryllodes sigullatus	Gryllidae	Q	N	60833
Tonga	Kava	09-Sep-1999	?	(Lepidoptera)	T/D	?	62396

ORIGIN	HOST	DATE INTER- CEPTED	SCIENTIFIC NAME	FAMILY	DISPO- SITION	NKO STATUS	FILE NO
Tonga	Kava	09-Sep-1999	Morganella longispina	Diaspididae	T/D	N	62397
Tonga	Mulberry	09-Oct-1998	?	Phytodeiidae	T/R	?	62027
Tonga	Orchid, Vanilla	07-Aug-2001	?	Pyralidae	T/D	Y	-01-0801
Tonga	Orchid, Vanilla	07-Aug-2001	?	Gelichiidae	T/D	Y	-01-0801
Tonga	Orchid, Vanilla	07-Aug-2001	Musca sorbens	Muscidae	T/D	N	-01-0801
Tonga	Orchid, Vanilla	08-Aug-2001	?	Noctuidae	T/D	Y	1-01-0801
Vancouver, Ca	Box	03-Oct-1995	Gryllus sp. prob. bimacul	Gryllidae	I/R	N	60410
Vietnam	Clothes	06-Jul-2001	Monomorium pharaonis	Formicidae	I/R	N	62848
Vizcaino, BC	pepper, red fresno	30-Oct-2004	Bactericera cockerelli	Psyllidae	T/D	y	1-04-114
Zimbabwe	Cat, house	09-Dec-1994	Haemaphysalis sp.	Ixodidae	R/R	Y	60105
Zimbabwe	Wood giraffe	21-Jun-1996	Bostrychoplites cornutus	Bostrichidae	T/R	Y	60754