



*"Touching Lives Everyday"*  
**HAWAII HEALTH SYSTEMS**  
C O R P O R A T I O N

Revised 1-6-09

**Hawaii Health Systems Corporation, HHSC  
Budget Briefing  
Fiscal Biennium 2009 - 2011**

**PRESENTED TO  
THE HOUSE COMMITTEE ON FINANCE  
REPRESENTATIVE MARCUS R. OSHIRO, CHAIR  
REPRESENTATIVE MARILYN B. LEE, VICE CHAIR**

**January 8, 2009, 1:30 PM  
Conference Room #308  
Hawaii State Capitol**

**Thomas M. Driskill, Jr., President and Chief Executive Officer**

**Program I.D. and Title: HTH 210 – Hawaii Health Systems Corporation**

**Program I.D. and Title: HTH 211 – Kahuku Medical Center**

## Narrative

HHSC operations are affected by national, state, and economic and fiscal conditions unique to HHSC in a complex of factors that bear on the corporation's capacity to optimize revenue and control costs. At the end of FY08 HHSC acknowledged that the current structure of HHSC and the escalating cost of healthcare had placed HHSC in a severe financial situation that would continue to worsen with no substantial changes forecast that would reverse the negative trends.

There are five primary reasons HHSC is losing money, the first four of which are shared by all hospitals in Hawaii:

1. No Disproportionate Share Hospital
2. Under-Reimbursement
3. Wait-List Problem
4. Physician Call Coverage and Recruitment Cost
5. Cost of Operating as a State Agency

Although HHSC was spared from the 4 percent reduction in general fund subsidy in the 2008 legislative session that applied to state agencies, an operating budget shortfall of \$62 million was still projected for FY09. In the 2008 legislative session, the Senate added \$5 million in additional general funds for HHSC, which would have provided a measure of relief. Ultimately, this increase was not included in the final budget that was passed, due to budgetary constraints the legislature faced. Governance and management at all levels of the HHSC system recognized that the amount of funds available to the State of Hawaii would not be sufficient to cover the minimum requirements for HHSC hospitals to continue to operate at current service and staffing levels through FY09. This projection prompted financial contingency plan development by management and governance of each region and the HHSC corporate office to operate within expected funding. The contingency plans anticipated that not all services currently provided could continue to be provided at same levels and operating tempos and that some important initiatives planned for FY 09 could not be pursued. Reductions in force were initiated at the corporate office (9 positions affected) and at Kona Community Hospital (56 positions affected).

The contingency plans being implemented by HHSC and the regions of HHSC will provide little or no relief from the very high accounts payable balances of several facilities that existed at the end of FY 08 (\$42.9 million system-wide total A/P) and have continued to exist through the first half of FY 09 (\$31.4 million system-wide total A/P as of December 22, 2008). HHSC regions have managed cash flow through the first half of FY 09 by drawing down and utilizing the majority of general funds appropriated for the full fiscal year. By the end of December 2008 all regions have requested release of all FY 09 general funds

subsidy. There will be no remaining general funds subsidy to cover cash flow shortfalls during the last few months of FY 09.

To enable facilities with highly aged accounts payable to pay vendors to assure the ability to continue operating the facilities, HHSC asked the governor to submit an FY 09 emergency appropriation request for \$29 million. For reasons involving the economy and the financial challenges all state departments and agencies are facing, the governor declined to submit the EA request. Because of this situation, several HHSC hospitals will start FY 2010 with very high accounts payable balances and the continuing concern that vendors will stop providing goods and services due to nonpayment, which would affect the ability of hospitals to continue providing services.

The administration excluded HHSC from the requirement to submit tiered mandatory reductions to baseline funding for the FB 2009-2011 biennium budget. Extraordinary actions were nonetheless required by HHSC regions to develop FY 2009-2011 budgets that are in line with funding advice provided by the Director of Finance.

This is the first biennium budget submission from HHSC after enactment of Act 290, passed in the 2007 legislative session. In accordance with Act 290 SLH 2007 regional system boards of HHSC shall exercise the power to prepare regional budgets. "The corporation board and any regional system boards shall collaboratively develop budgetary guidelines and annual operating budgets and capital budgets for each facility.....Two-year budgets will be approved for regional system boards, in alignment with State of Hawaii biennium budgeting. The corporate board shall not alter the two-year budget of a regional system except:

- (1) Where state general funding is reduced;
- (2) An emergency exists; or
- (3) There is a negotiated budget approved by a regional system board."

First attempts by the corporation and the regions to develop budgets for FY 2010 and FY 2011 based on funding guidance from the Director of Finance produced budgets with total negative cash flow for FY 2010 totaling approximately \$35 million and total negative cash flow for FY 2011 totaling approximately \$31.3 million.

Since regions could not come to agreement on distribution of FY 2010 and FY 2011 general funds subsidy, the HHSC President & CEO (PECO) made the decision on the distribution of general funds for the budget submissions. The decision by the PCEO on distribution of general funds was in accordance with budgeting policy subsequently established in coordination with the Policy Committee required by Act 290 and by the HHSC Corporate Board of Directors. Cash flow shortfalls for FY 2010, based on the initial budget submissions are indicated below:

HAWAII HEALTH SYSTEMS CORPORATION  
 CASH FLOW SURPLUS/(DEFICIT) BY  
 REGION

FISCAL YEAR 2010

FIRST, "REALISTIC" BUDGET SUBMISSIONS

	EAST		WEST				HHSC		
	HAWAII	HAWAII	HAWAII	MAUI	KAUAI	OAHU	CORP	TOTAL	
Cash Collections	117,540	54,660	190,346	49,438	31,206	226	443,416		
DHS Direct Payments to Hospitals									
Payroll Cash Requirements	(96,048)	(41,316)	(135,624)	(42,562)	(34,218)	(7,332)	(357,100)		
Non-Payroll Cash Requirements	(50,684)	(24,888)	(88,152)	(18,079)	(6,649)	(1,437)	(189,889)		
<b>Operating Cash Flow Deficit</b>	<b>(29,192)</b>	<b>(11,544)</b>	<b>(33,430)</b>	<b>(11,203)</b>	<b>(9,661)</b>	<b>(8,543)</b>	<b>(103,573)</b>		
Appropriations from State of Hawaii	24,481	11,223	27,256	8,785	10,395	320	82,460		
Collective Bargaining Funding									
Financing of Roselani Place	(355)	(162)	(532)	(142)	(98)		(1,289)		
<b>Noncapital Financing Cash Flow Surplus</b>	<b>24,126</b>	<b>11,061</b>	<b>26,724</b>	<b>8,643</b>	<b>10,297</b>	<b>320</b>	<b>81,171</b>		
Repayemnts on Capital Lease Obligations	(3,545)	(2,493)	(4,881)	(1,137)	(244)	(320)	(12,620)		
<b>Capital and Related Cash Flow Deficit</b>	<b>(3,545)</b>	<b>(2,493)</b>	<b>(4,881)</b>	<b>(1,137)</b>	<b>(244)</b>	<b>(320)</b>	<b>(12,620)</b>		
Allocation of Corporate Office Costs	(2,353)	(1,079)	(3,524)	(938)	(649)	8,543			
<b>Cash Flow Deficit by Region</b>	<b>(10,964)</b>	<b>(4,955)</b>	<b>(15,111)</b>	<b>(4,635)</b>	<b>(257)</b>		<b>(35,022)</b>		

After review of the initial budgets it was understood that, given the economic circumstances faced by the state, it was not reasonable to expect the state of Hawaii to provide \$35 million additional general funds subsidy to HHSC for FY 2010 and \$31.3 million additional general funds subsidy to HHSC for FY 2011. Accordingly, regions were asked to revise budgets for FY 2010 and FY 2011 that, based on same general funds distribution, that would eliminate the negative cash flow projections. Final HHSC and regional budgets submitted for the executive budget indicate minor negative cash flow, only in two regions. It should be noted that these budgets were developed prior to worsening economic forecasts that may indicate the cash revenues forecasted in these budgets will be less likely to occur. It should be noted these budgets do not include amount for paying down the very high accounts payable balances some HHSC facilities will start FY 2010 with.

HAWAII HEALTH SYSTEMS CORPORATION  
**CASH FLOW SURPLUS/(DEFICIT) BY REGION**  
**FISCAL YEAR 2010**

**SECOND, FINAL BUDGET SUBMISSIONS**

	EAST		WEST		MAUI	KAUAI	OAHU	CORP	HHSC	TOTAL
	HAWAII	HAWAII	HAWAII	HAWAII						
Cash Collections	118,668	57,984			190,346	52,075	31,206	226		450,505
DHS Direct Payments to Hospitals										
Payroll Cash Requirements	(91,127)	(41,316)			(135,624)	(41,420)	(34,488)	(7,332)		(351,307)
Non-Payroll Cash Requirements	<u>(49,328)</u>	<u>(24,162)</u>			<u>(88,152)</u>	<u>(18,127)</u>	<u>(6,649)</u>	<u>(1,437)</u>		<u>(187,855)</u>
<b>Operating Cash Flow Deficit</b>	<b><u>(21,787)</u></b>	<b><u>(7,494)</u></b>			<b><u>(33,430)</u></b>	<b><u>(7,472)</u></b>	<b><u>(9,931)</u></b>	<b><u>(8,543)</u></b>		<b><u>(88,657)</u></b>
Appropriations from State of Hawaii	24,481	11,223			27,256	8,785	10,395	320		82,460
Collective Bargaining Funding										

External Financing	3,562	-	15,600	-	-	19,162
Financing of Roselani Place	<u>(344)</u>	<u>(165)</u>	<u>(539)</u>	<u>(142)</u>	<u>(99)</u>	<u>(1,289)</u>
<b>Noncapital Financing Cash Flow Surplus</b>	<b><u>27,699</u></b>	<b><u>11,058</u></b>	<b><u>42,317</u></b>	<b><u>8,643</u></b>	<b><u>10,296</u></b>	<b><u>100,333</u></b>
Repayemnts on Capital Lease Obligations	<u>(3,543)</u>	<u>(2,491)</u>	<u>(4,876)</u>	<u>(1,148)</u>	<u>(243)</u>	<u>(12,621)</u>
<b>Capital and Related Cash Flow Deficit</b>	<b><u>(3,543)</u></b>	<b><u>(2,491)</u></b>	<b><u>(4,876)</u></b>	<b><u>(1,148)</u></b>	<b><u>(243)</u></b>	<b><u>(12,621)</u></b>
Allocation of Corporate Office Costs	<u>(2,281)</u>	<u>(1,092)</u>	<u>(3,566)</u>	<u>(943)</u>	<u>(661)</u>	<u>8,543</u>
<b>Cash Flow Deficit by Region</b>	<b><u>88</u></b>	<b><u>(19)</u></b>	<b><u>445</u></b>	<b><u>(920)</u></b>	<b><u>(539)</u></b>	<b><u>(945)</u></b>

Board members and executives of HHSC and the five HHSC regions are considering potential legislation for the 2009 legislative session to improve the ability of the HHSC regions and facilities to structure operations and manage financial performance to reduce operating losses and contain requirements for general fund subsidy from the state of Hawaii at current levels and, hopefully, to reduce requirements for general funds subsidy. We are requesting the legislature give full hearings and consideration to these measures when they may be submitted:

- Statutory changes to allow new organizational structures and personnel programs.
- Legislative approval to HHSC Regional Systems Board of Directors and/or the HHSC Corporate Board of Directors for reduction and/or elimination of Services
- Increase in health plan payments to Critical Access Hospitals and Federally Qualified Health Clinics.

## **Mission Statement**

Our MISSION is:

Providing and enhancing accessible, comprehensive, health care “safety net” services that are quality-driven, customer-focused, and cost-effective

Our VISION is:

Be the provider of choice for the Pacific communities we serve; Employer of choice for our staff, and System of choice for our physicians

Our VALUES are:

- Integrity - Collaboration - Caring - Commitment - Innovation - Community

## **Organizational Charts**

Please see Worksheet 1.

HHSC organizational charts include:

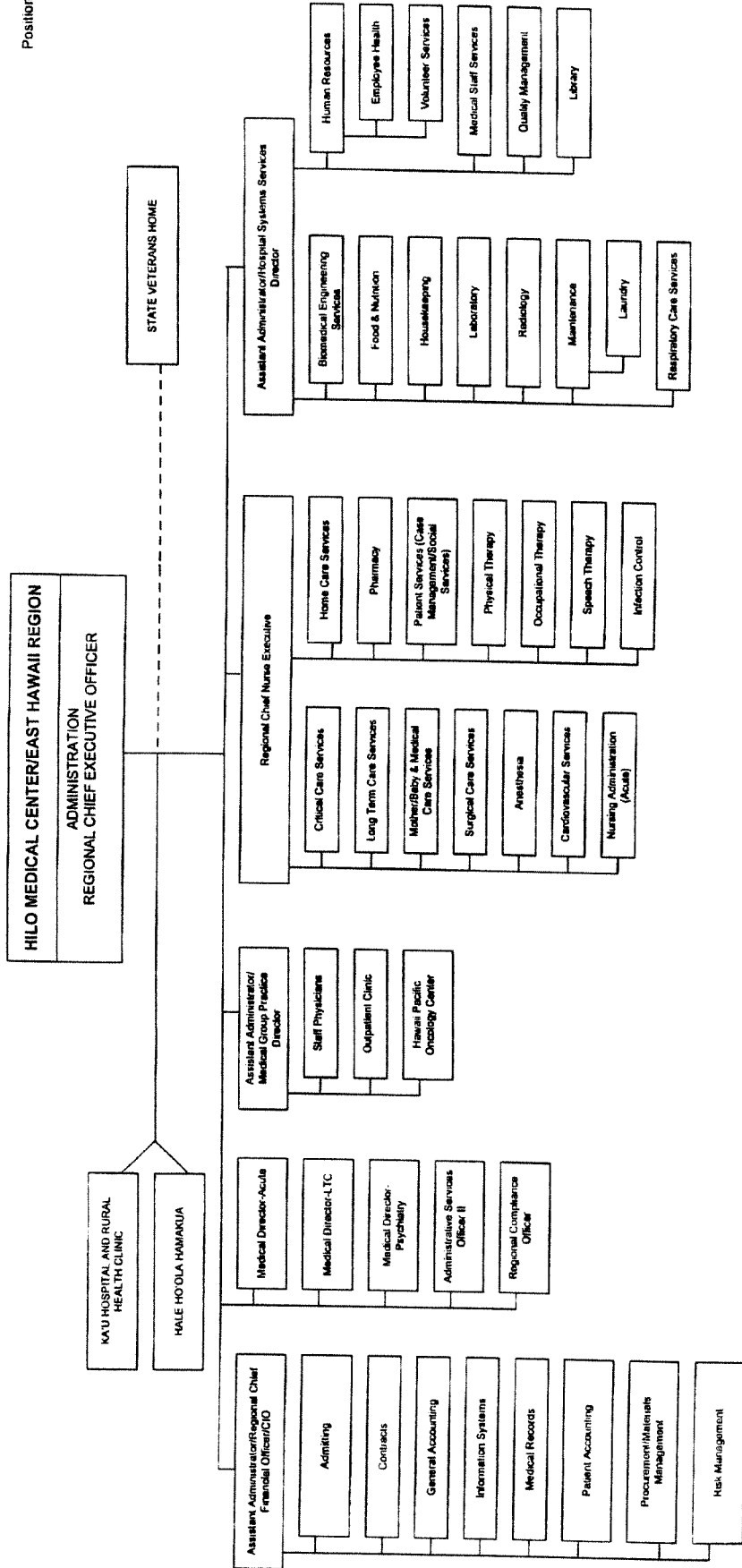
- East Hawaii Region – Hilo Medical Center, Hale Hoola Hamakua, Kau Hospital
- Kauai Region – Kauai Veterans Memorial Hospital (West Kauai Medical Center), Samuel Mahelona Memorial Hospital
- Maui region – Maui Memorial Medical Center, Kula Hospital, Lanai Community Hospital
- Oahu Region – Leahi Hospital, Maluhia
- West Hawaii Region – Kona Community Hospital, Kohala Hospital
- Corporate Office



Worksheet 1

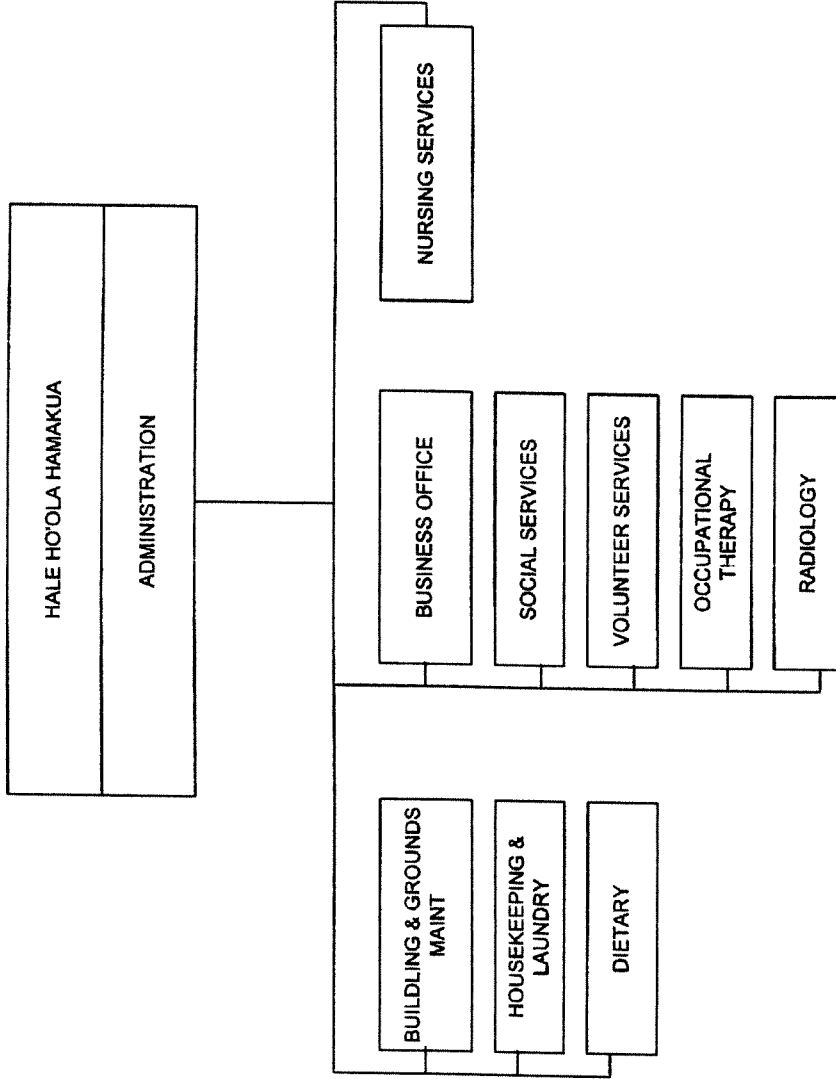
Funding levels for divisions/branches

<u>Division or Branch Name</u>	<u>FY09 (P)</u>	<u>FY09 (T)</u>	<u>FY09 \$\$\$</u>	<u>FY10 (P)</u>	<u>FY10 (T)</u>	<u>FY10 \$\$\$</u>	<u>MOF</u>
Hawaii Health Systems Corporation	2,836.25		403,460,000			470,611,106	B
Hawaii Health Systems Corporation (does not include CB apprn in FY 09)			51,478,043			82,460,894	A
Kahuku Medical Center			1,440,000			1,500,000	A

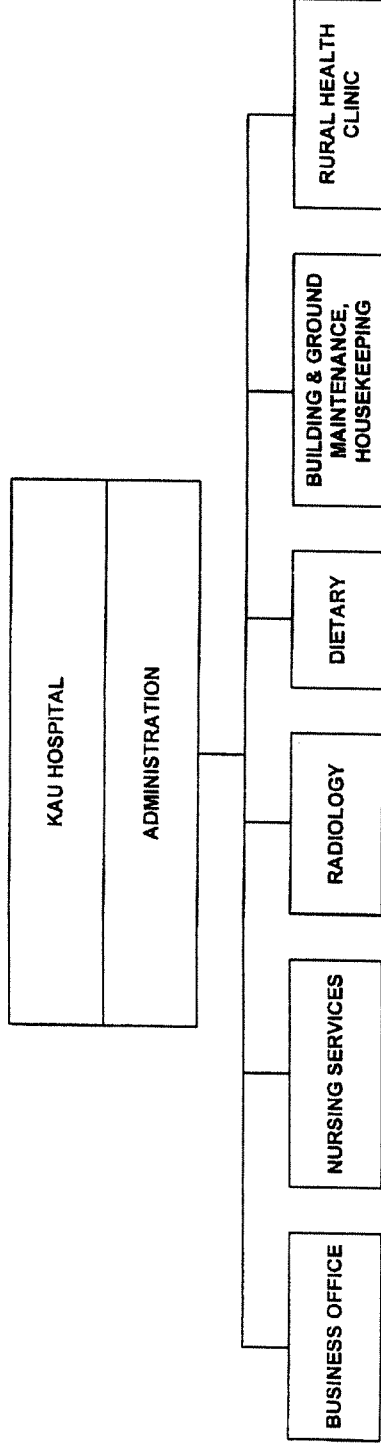


Updated: 10/07; 2/08; 8/08; 12/08

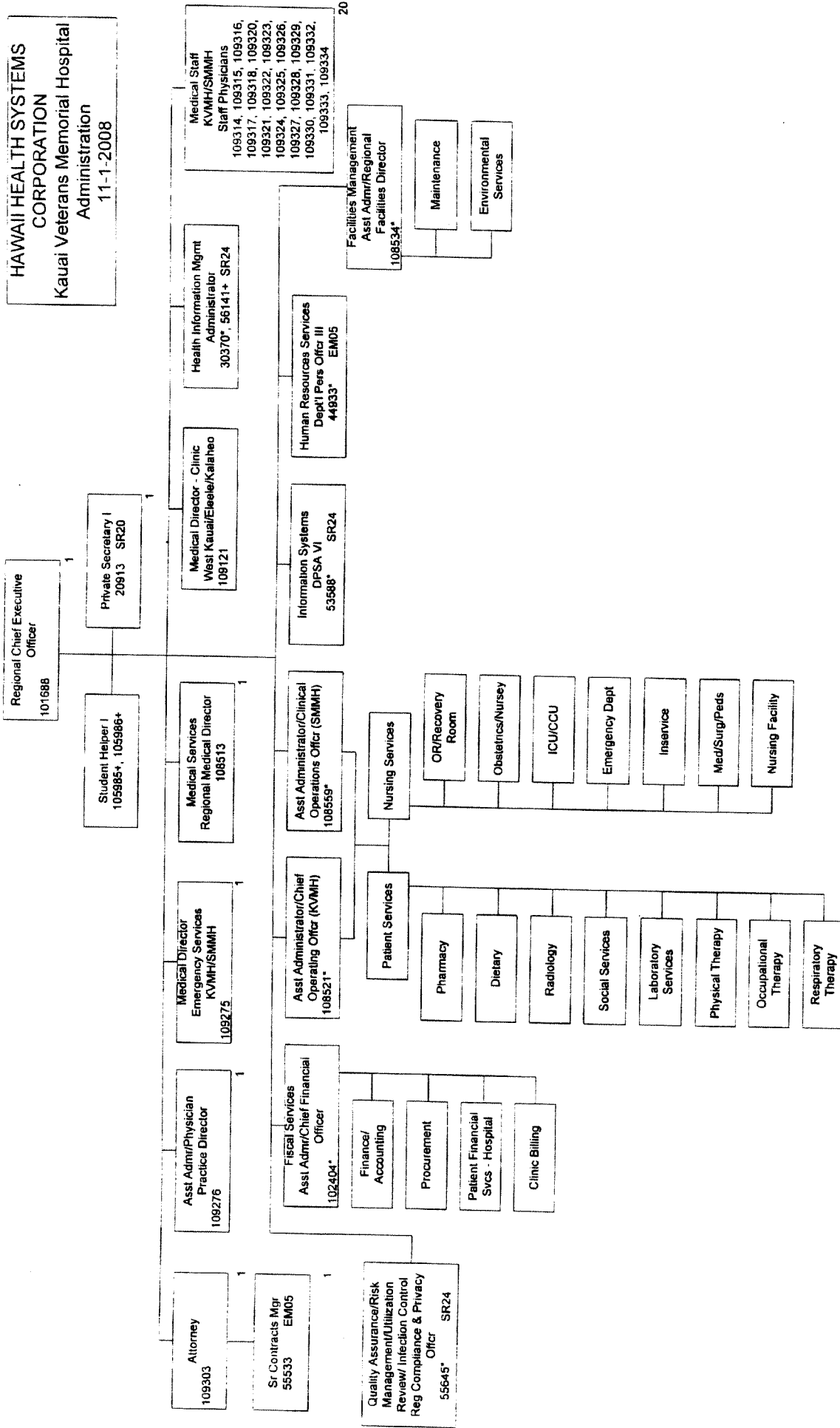
### HHSC East Hawaii Region



HHSC East Hawaii Region



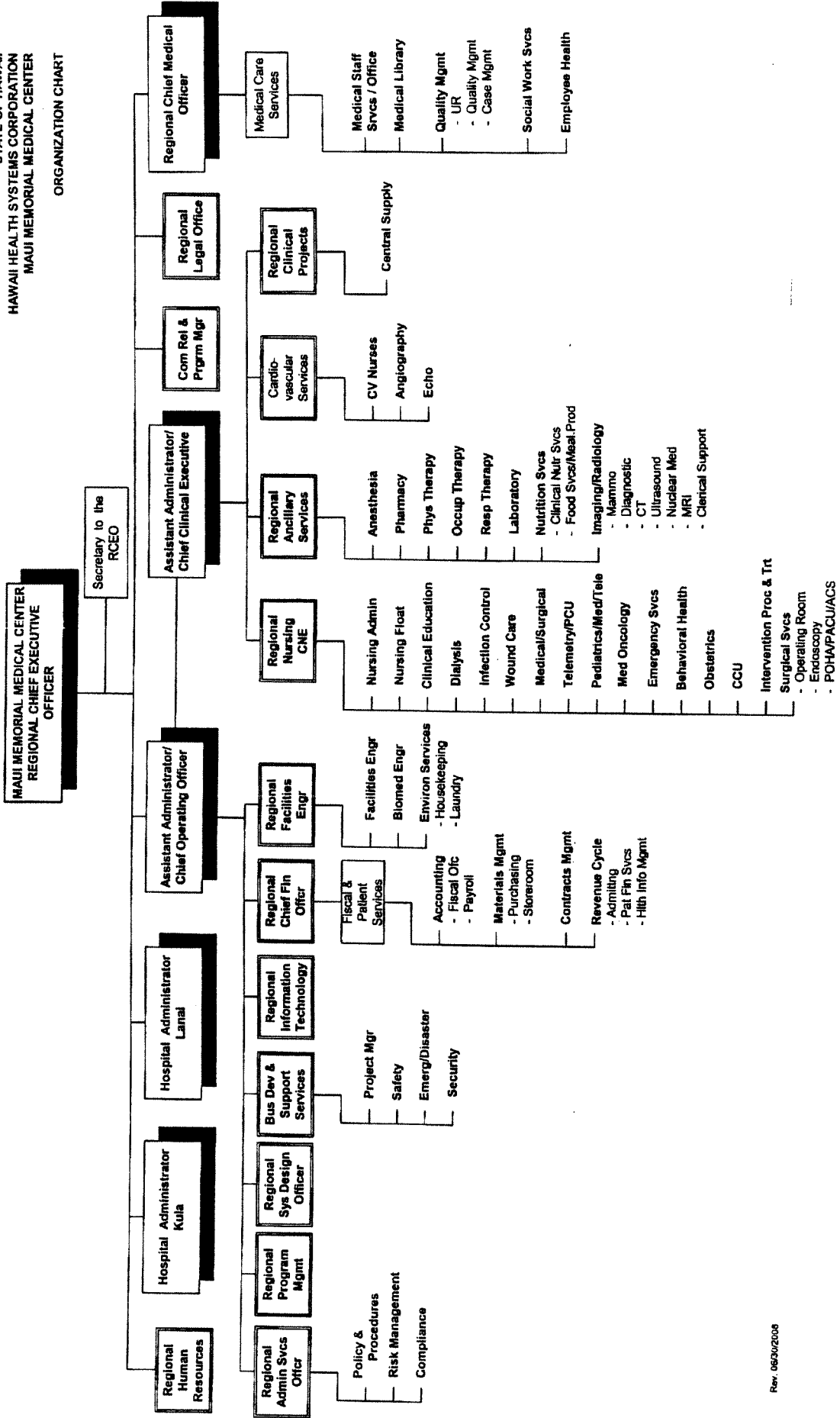
# HHSC Kauai Region





# HHSC Maui Region

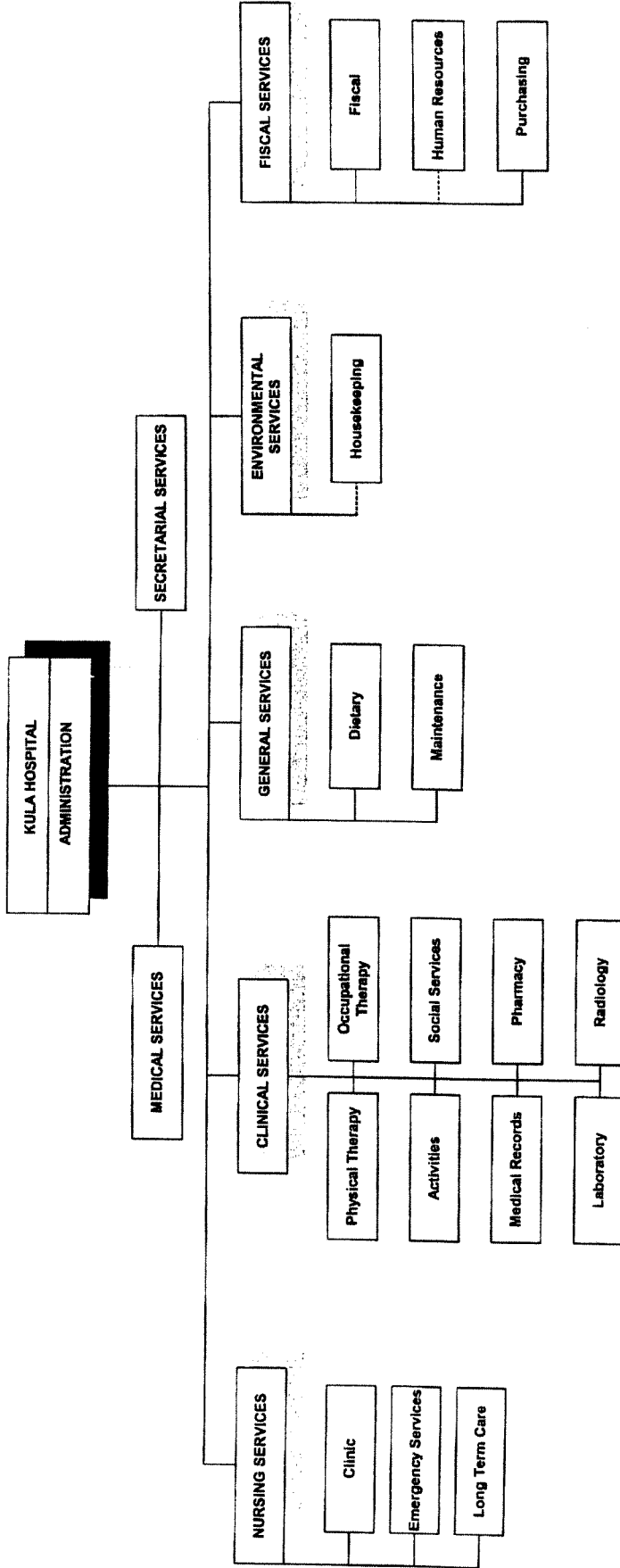
STATE OF HAWAII  
HAWAII HEALTH SYSTEMS CORPORATION  
MAUI MEMORIAL MEDICAL CENTER  
ORGANIZATION CHART



Rev. 06/30/2008

# HHSC Maui Region

STATE OF HAWAII  
 HAWAII HEALTH SYSTEMS CORPORATION  
 KULA HOSPITAL  
 ORGANIZATION CHART

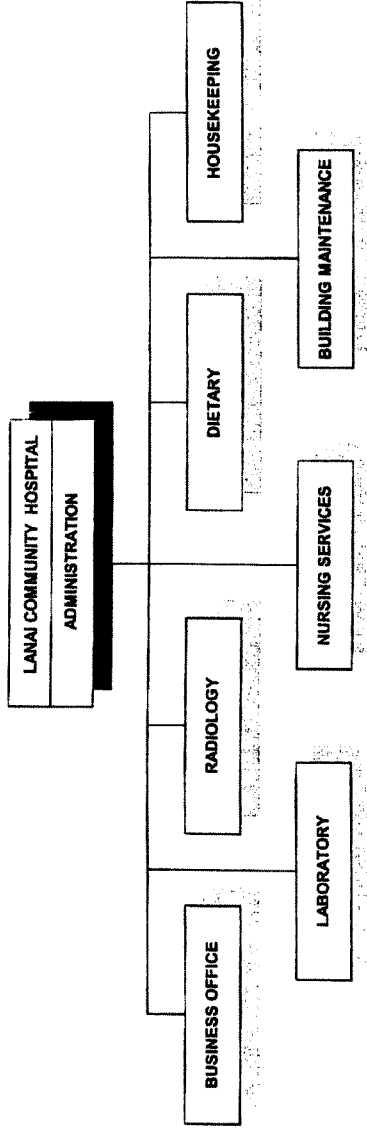


Rev. 06/20/2008  
 Dotted Line Indicates Direct Report to M/M/C



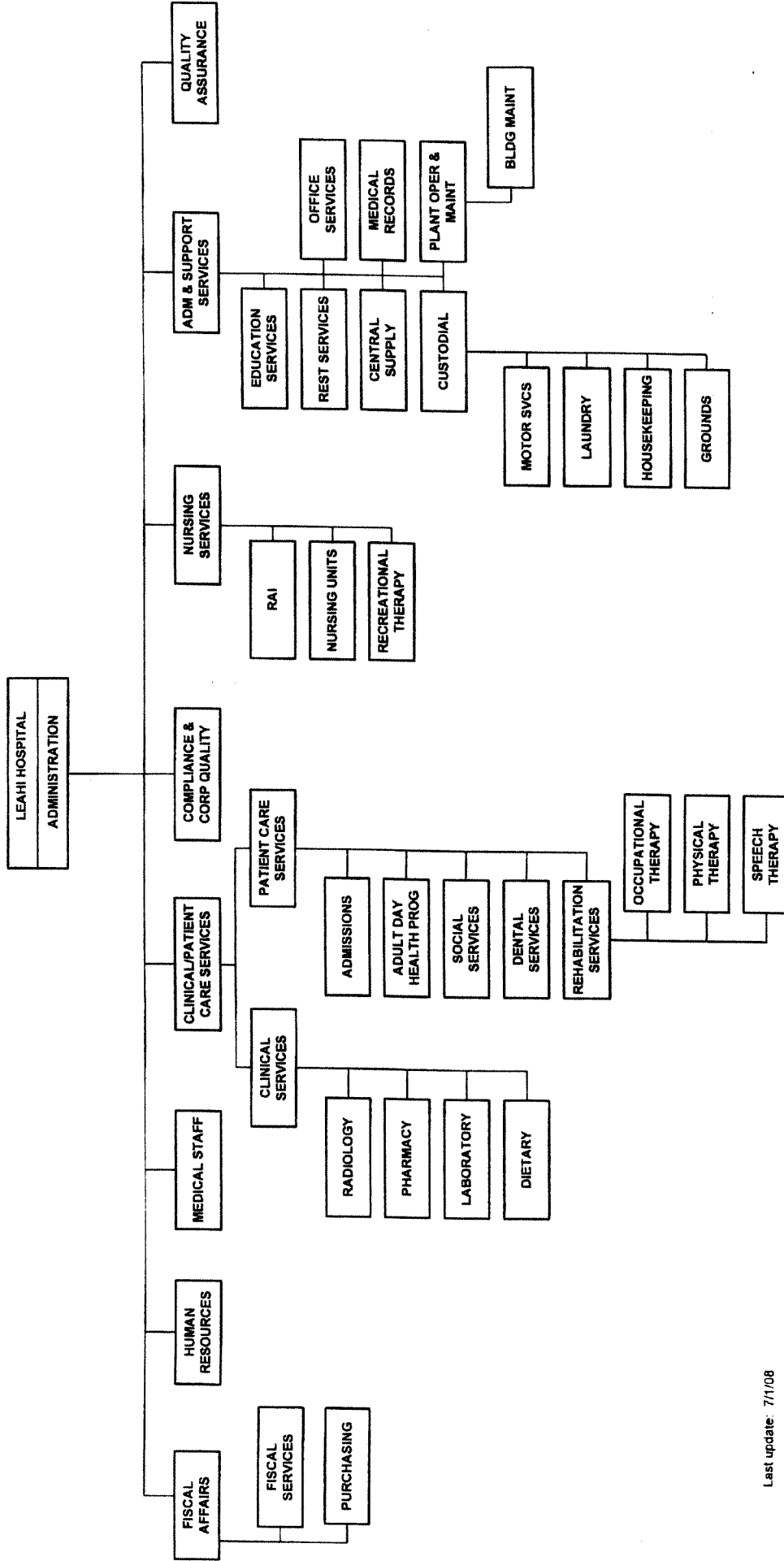
# HHSC Maui Region

STATE OF HAWAII  
HAWAII HEALTH SYSTEMS CORPORATION  
LANAI COMMUNITY HOSPITAL  
ORGANIZATION CHART



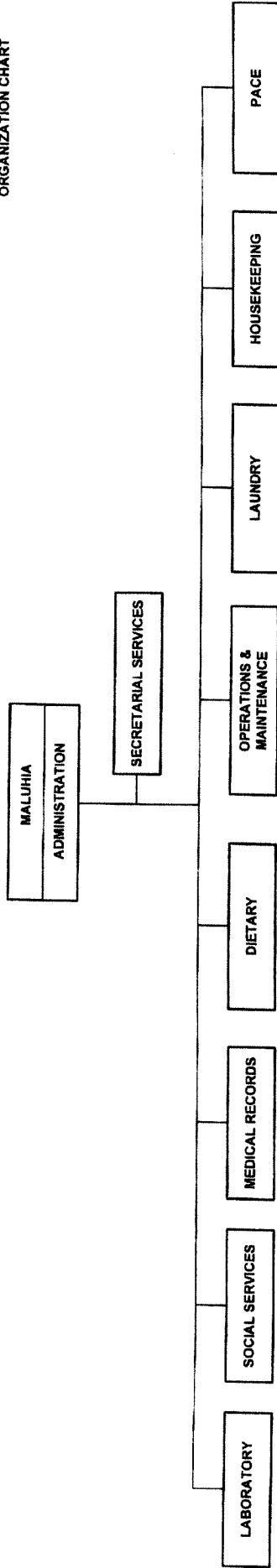
# HHSC Oahu Region

STATE OF HAWAII  
 HAWAII HEALTH SYSTEMS CORPORATION  
 LEAHI HOSPITAL  
 ADMINISTRATION  
 ORGANIZATION CHART

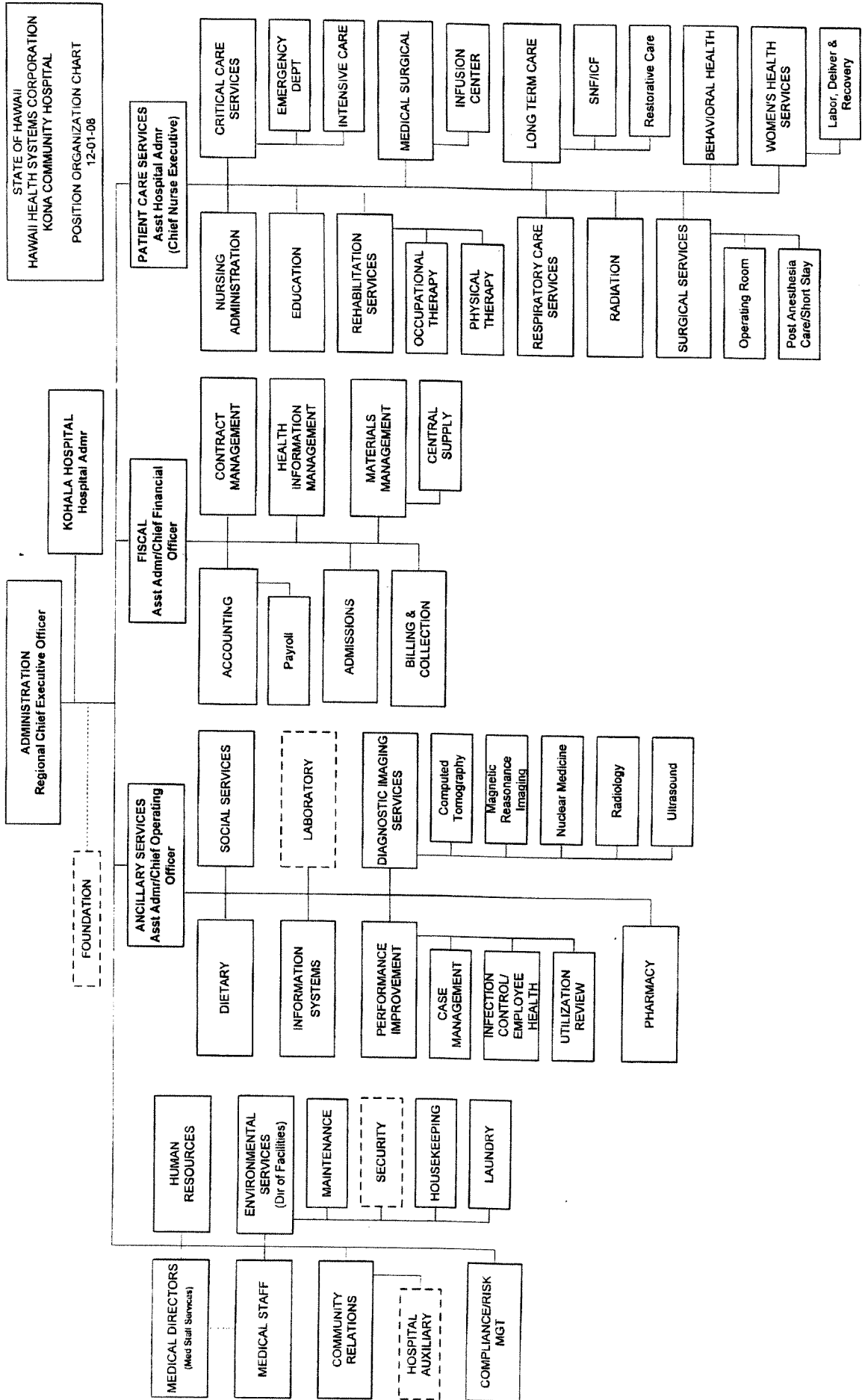


# HHSC Oahu Region

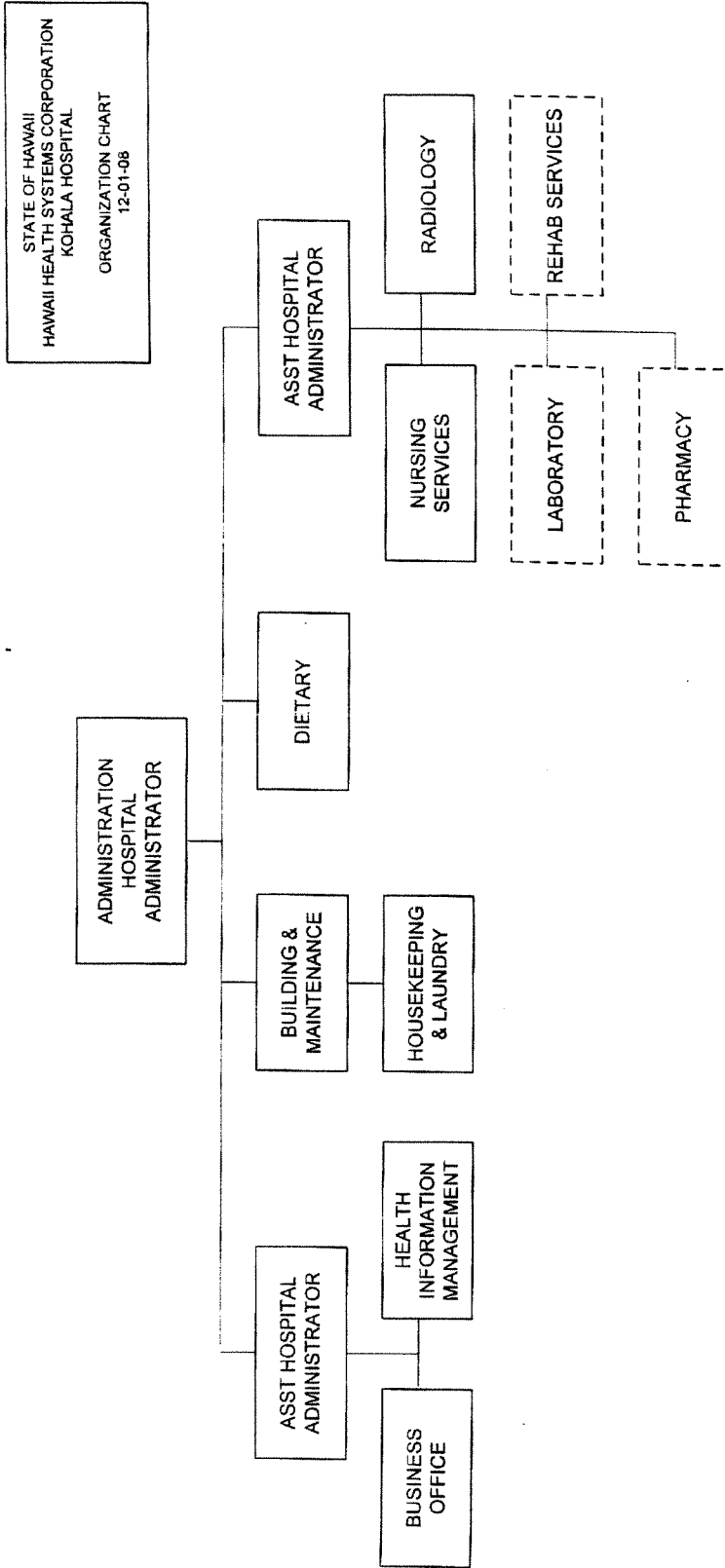
STATE OF HAWAII  
HAWAII HEALTH SYSTEMS CORPORATION  
MALUHIA  
ADMINISTRATION  
ORGANIZATION CHART



# HHSC West Hawaii Region

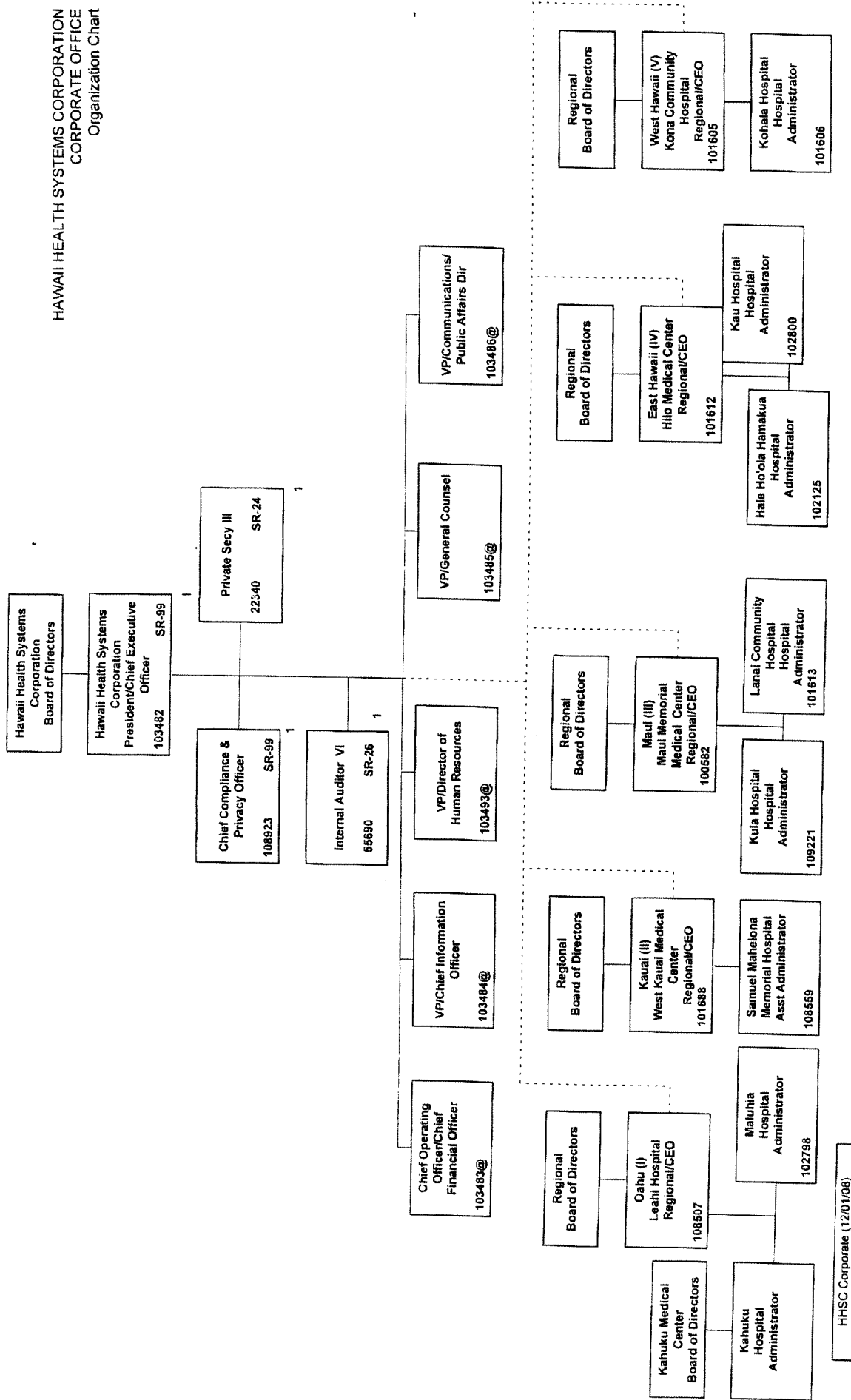


# HHSC West Hawaii Region



# HHSC Corporate Office

HAWAII HEALTH SYSTEMS CORPORATION  
CORPORATE OFFICE  
Organization Chart



**TABLES 1 – 6**

**Budget Briefing  
January 8, 2009**

(Revised 1-6-09)

**Table 1: Department Functions**

<u>Priority #</u>	<u>Description of Function</u>	<u>Performance Measures</u>
	<p><u>(NOTE: The basic functions of HHSC are to operate the facilities and clinics of the system. HHSC has recently been reorganized into semi-autonomous regions. No agreement has reached on prioritizing facilities or types of facilities, one before another. While we are, therefore, unable to list the "functions" (hospitals, critical access hospitals, physician clinics, etc.) of the system in a prioritized listing, we are providing details in Table 1 of the several types of operations of HHSC, the activities of these several types, and the measures of workload or performance involved. Information on applicable statutory provisions is also provided.)</u></p>	

- |  |   |
|--|---|
| <p><u>Operate Community Hospitals.</u></p> <p>Provision of emergency department services and extensive range of acute care hospital services at Maui Memorial Medical Center (Maui Region), Hilo Medical Center (East Hawaii Region), and Kona Community Hospital (West Hawaii Region).</p> <p>Operate physician clinics as necessary to provide continuity of care and support for hospital services.</p> | <ul style="list-style-type: none"> <li>* Acute Care Patient Days</li> <li>* Births</li> <li>* Emergency Room Visits</li> <li>* Hospital Surgical Procedures</li> <li>* Long Term Care Patient Days (Hilo Medical Center &amp; Kona Community Hospital)</li> <li>* Physician Clinic Visits</li> <li>* Physician Clinic Procedures</li> </ul> |
|--|---|

Statutory Reference:

Act 262 Session Laws of Hawaii 1996, Section 20.

"It is the intent of this Act that all

Rights, powers, functions, assets, and operations of the

Division of community hospitals be conveyed to the

Hawaii health systems corporation, such that all of the

Activities and services of the division of community

Hospital be continued without interruption by the corporation.

Act 290 SLH 2007 and Chapter 323F, HRS charge the HHSC Corporate



Board of Directors and the Regional Systems Boards of Directors to provide healthcare services to these communities. A substantial reduction or elimination of direct patient services at any facility requires the approval of the legislature. Section 323F-31(b) HRS.

Operate Critical Access Hospitals.

Provision of emergency department service and

Other acute care and long term care services to

Rural communities for which services would

Otherwise not be provided. Operate physician clinics

as necessary to provide continuity of care and support for hospital services.

- \* Emergency Room Visits
- \* Births (KVMH only)
- \* Acute Care Patient Days
- \* Long Term Care Patient Days
- \* Surgical Procedures (KVMH Only)
- \* Physician Clinic Visits
- \* Physician Clinic Procedures

- Kauai Region: West Kauai Medical Center/Kauai Veterans Memorial Hospital & Samuel Mahelona Memorial Hospital
- Maui Region: Kula Hospital & Lana`i Community Hospital
- West Hawaii Region: Kohala Hospital
- East Haaii Region: Hale Ho`ola Hamakua & Ka`u Hospital.

Statutory Reference:

Act 262 SLH 1996, Section 20. "It is the intent of this Act that all Rights, powers, functions, assets, and operations of the Division of community hospitals be conveyed to the Hawaii health systems corporation, such that all of the Activities and services of the division of community

Hospital be continued without interruption by the corporation. Act 290 SLH 2007 and Chapter 323F, HRS charge the HHSC Corporate Board of Directors and the Regional Systems Boards of Directors to provide healthcare services to these communities. A substantial reduction or elimination of direct patient services at any facility requires the approval of the legislature. Section 323F-31(b) HRS.

Federal Rural Hospital Flexibility Program. Created by Congress as part of the 1997 Balanced Budget Act, Critical Access Hospitals (CAH) program is a part of the Medicare Rural Hospital Flexibility Program (MRHFP). This program is designed to assist States and rural communities to improve access to essential health care services through the establishment of alternative service hospitals and rural health networks. A CAH is an acute care facility that provides emergency, outpatient, and limited inpatient services. A CAH may contain up to 25 acute care beds. CAHs receive at least 101% of costs for inpatient, swing-bed and outpatient hospital services.

Act 226, Session Laws of Hawaii, Regular session 2007, Section 4 as enacted, amended Section 346-59(a) HRS, in relevant parts, to require that "Payments to critical access hospitals for services rendered to Medicaid beneficiaries shall be calculated on a cost basis using Medicare reasonable cost principles." While Medicare program payments to CAHs for long term care patients of distinct part units of CAHs are not required to cover costs, in Hawaii Medicaid program payments for long term care patients of distinct part units of CAHs are calculated on a cost basis.

Operate Long Term Care Facilities.

Oahu Region: Leahi Hospital and Maluhia, a  
Long term care facility

- \* Long Term Care Patient Days
- \* Adult Day Health Census
- \* Acute TB Patient Days

Statutory Reference:

Act 262 SLH 1996, Section 20. "It is the intent of this Act that all Rights, powers, functions, assets, and operations of the Division of community hospitals be conveyed to the Hawaii health systems corporation, such that all of the Activities and services of the division of community Hospital be continued without interruption by the corporation.  
Act 290 SLH 2007 and Chapter 323F, HRS charge the HHSC Corporate Board of Directors and the Regional Systems Boards of Directors to provide healthcare services to these communities. A substantial reduction or elimination of direct patient services at any facility requires the approval of the legislature. Section 323F-31(b) HRS.

Prior to establishment of HHSC, HAR section 17-174-84(b)(5) excluded payments to tuberculosis services provided by Leahi Hospital from the Hawaii state Medicaid program. Leahi Hospital Operates the long term acute hospital ward (LTAC) for long term, Drug resistant, and other TB patients who are discharges from Other hospitals in Hawaii. While HAR 17-174-84(b)(5) is no longer in effect, the state payments from the Hawaii State Medicaid program for tuberculosis services provided by Leahi Hospital continue to be excluded.

Operate Home Health Program.

East Hawaii Region: Hilo Medical Center

Home Health Program.

\* Home Health Patient Census

\* Home Health Visits

Statutory Reference:

Act 262 SLH 1996, Section 20. "It is the intent of this Act that all Rights, powers, functions, assets, and operations of the Division of community hospitals be conveyed to the Hawaii health systems corporation, such that all of the Activities and services of the division of community Hospital be continued without interruption by the corporation. Act 290 SLH 2007 and Chapter 323F, HRS charge the HHSC Corporate Board of Directors and the Regional Systems Boards of Directors to provide healthcare services to these communities. A substantial reduction or elimination of direct patient services at any facility requires the approval of the legislature. Section 323F-31(b) HRS.

Note 1

Operate State Veterans Home.

East Hawaii Region: Yukio Okutsu State Veterans

Home – Hilo.

Operation of the Yukio Okutsu State Veterans Home does not require subsidy from HHSC or general funds subsidy from the State of Hawaii. Payments from the State of Hawaii Medicaid programs, per diem payments from the VA, and payments from individual Veterans are sufficient to cover operating expenses.

- \* Resident Census
- \* Resident Days
- \* Adult Day Health Census

Statutory Reference:

Title 38 Code of Federal Regulations.

State home means a home approved by the U.S. Department of Veterans Affairs (VA) which was established by a State for veterans disabled by age, disease, or otherwise who by reason of such disability are incapable of earning a living. State homes include facilities for domiciliary, nursing home care, and/or adult day health care. Hospital care may be included when provided in conjunction with domiciliary or Nursing home care. A State home may also provide care to veteran related family members. VA participates in two grant-in-aid programs for States. The VA may participate in up to 65 percent of the cost of construction or acquisition of State nursing homes or domiciliaries or for renovation to existing State Homes. VA also provides per diem payments to States for the care of eligible veterans in state homes. The Secretary of Veterans Affairs may adjust these rates each year.

Title 38 C.F.R., Part 17.199: Inspection of Recognized State Homes.

Title 38 C.F.R., Part 17.200: Audit of State Homes

Title 38 C.F.R., Part 51: Per Diem for Nursing Home Care of Veterans In State Homes

**Table 2: Program ID Listing of Major Activities**

Table 2  
Program ID Listing of Major Activities

<u>Prog ID/Org</u>	<u>Major Activity or Activities performed</u>	<u>Priority #</u>	<u>Pos (P)</u>	<u>Pos (T)</u>	<u>PS \$\$\$\$</u>	<u>Other \$\$\$\$</u>	<u>MOF</u>
HTH 210/LA		1	2836.25		351,307,000	119,304,106	B
HTH 210/LA		1				82,460,894	A

**HHSC Corporation** - Policy formulation, hospital system governance, business development, quality assurance, strategic direction, planning and coordination, financial management, legal counsel, personnel management, materials management, information systems, and technical services to support its community hospitals. **HHSC Facilities** - Primary hospital acute care provider on the neighbor islands, and , in most instances, the only in-patient hospital services in rural locations. Acute inpatient services include surgical, medical, critical care, obstetrics, pediatric, and psychiatric care. Outpatient care services include ambulatory surgery, home health, and emergency room services. Clinical services include nursing, anesthesiology, central supply, radiology, oncology, pathology, respiratory therapy, physical and occupation therapy, social services, pharmacy and dietary. Support services include processing, medical records, logistics, housekeeping, and maintenance.

**Kahuku Hospital** - Provide quality health care and promote wellness in our community in a professional, caring, culturally sensitive and financially responsible manner.

HTH 211/ 1 1,500,000 A

Hawaii Health Systems Corporation  
 2009 Legislative Overview  
 TABLE 2  
 Program ID Listing of Major Activities

Prog ID/Org	Major Activities/Activities Performed	Prio#	Pos (P)	Pos (T)	PS \$\$\$\$	Other \$\$\$\$	MOF
Hilo Med. Center	Acute care hospital services, skilled nursing/long term care services, 24 hour physician staffed emergency services, cardiology services, inpatient dialysis, maternity services, gynecology services, pediatric services, adult psychiatric services, radiology services, urology services, neurology services, angiography and interventional radiology, telemedicine, surgical services, subspecialty surgical services (vascular, orthopedics, ophthalmology, otorhinolaryngology, urology), physiatry, wound and ostomy services, endoscopy, outpatient surgery clinic, oncology, pharmacy, EEG, laboratory and blood bank services, food and nutrition counseling, home health, rehab services (PT, OT, Speech, and recreational), respiratory therapy, and social services.		898.75	15.35	79 M	48 M	Net billir revenue-1 neral fun subsidy, coll. Bar Subsidy, donations
Hale Ho'oula Hamakua	Critical Access Hospital services (acute and long term care), 24 hour emergency services, inpatient services (physical therapy, occupational therapy, speech therapy, social services, radiology, laboratory), outpatient services (laboratory and radiology), nutrition services, and volunteer services.		82	4.69	7 M	3.7 M	
Kauai Hospital	Critical Access Hospital services (acute and long term care), 24 hour emergency services, inpatient services (radiology, physical therapy, occupational therapy, speech therapy, laboratory, outpatient services (laboratory, radiology, and pharmacy), primary care clinic (family practice and internal medicine), and geriatric medicine.		49.8	3	5 M	1.6 M	
Kona Community Hospital	Acute care hospital services, skilled nursing/long term care services, 24 hour emergency services, inpatient and outpatient services, obstetrics/gynecology, medical/surgical, ICU, behavioral health, outpatient nursing services (chemotherapy), physical therapy, occupational therapy, speech therapy, respiratory therapy, pharmacy, laboratory and pathology services, radiology services (MRI, CT Scan, Ultrasound, Echo, Nuclear Medicine), cardiology, and radiation therapy.		394.8	14.6	37 M	25 M	
Kohala Hospital	Critical Access Hospital services (acute and long term care), 24 hour emergency services, inpatient and outpatient laboratory and radiology services.		50.6	2.6	4.1 M	1.9 M	
Kauai Veterans Memorial Hospital	Critical Access Hospital services (acute and long term care), 24 hour emergency services, cardiac care, surgical services (inpatient/outpatient), staff radiologist, staff orthopedic surgeon, inpatient and outpatient radiology (CT scan, ultrasound, mammography), fetal ultrasound consultation arrangement with Kapiolani Medical Center, cardiac ultrasound arrangement with Queen's Medical Center, physical therapy, occupational therapy, pharmacy, respiratory therapy, OB/GYN services, mother/baby care, pediatric care, nutrition counseling, laboratory services, social services, and off-site multi-specialty clinics.		258.08	17.30	31 M	12.5 M	
Samuel Mahelona Memorial Hospital	Critical Access Hospital services (acute and long term care), 24 hour emergency services, inpatient services (pharmacy, social services, physical therapy, occupational therapy, speech therapy, recreational therapy, dietitian counseling), outpatient services (laboratory, physical therapy, radiology, and		149.55	3.5	11 M	6.9	



	occupational therapy), adult inpatient psychiatric services, detoxification services, and inpatient tuberculosis services.								
Mau Memorial Medical Center	Acute care hospital services, radiology services (CT Scan, MRI, ultrasound, nuclear medicine, thallium stress treadmill, general angiography, interventional services, cardio version, ablations, EP studies, cardiac catheterization, pacemakers, ERCP, and stereotactic mammography), cardiac and ICU, progressive care unit, adult psychiatric unit, physical therapy, occupational therapy, recreational therapy, outpatient surgery, acute inpatient dialysis, inpatient surgery, obstetrics/gynecology, cancer center (medical oncology/radiation oncology), 24 hour emergency/urgent care services, pharmacy, respiratory therapy, pediatrics, telemetry, EKG, laboratory, echocardiography, Tran esophageal echos, treadmill stress tests, neurosurgery, endoscopy, nutrition counseling, general medical surgical units, outpatient observation unit, wound/ostomy care, and skilled nursing care.	1154.75	34.26	117.5 M	87 M				
Kula Hospital	Critical Access Hospital services (acute and long term care), 24 hour emergency services, developmentally disabled inpatient services (ICF-MR), Alzheimer's and dementia care, family practice clinic services, pharmacy services, physical therapy services, occupational therapy services, laboratory services, radiology services, and outpatient clinic.	183.2	2.5	15.8 M	5 M				
Leahi Community Hospital	Critical Access Hospital services (acute and long term care), 24 hour emergency services, limited laboratory services, limited radiology services, and dialysis services.	30.5	4.5	2.4 M	1.7 M				
Maulaha Hospital	Long term care inpatient services, adult day health services, home care services, primary care clinic, nutrition services, social services, radiology services, physical therapy, occupational therapy, speech therapy, and recreational therapy.	205.5	4.8	15.5 M	3 M				
Leahi Hospital	Long term care inpatient services, acute inpatient TB unit, outpatient TB services, geriatric outpatient clinic, adult day health services, pharmacy services, recreational therapy, nutrition services, social services, physical therapy services, occupational therapy services, speech therapy services, laboratory services, and radiology services.	274.3	7.74	19 M	3.9 M				
HHSC Corporate Office	Administrative and governance support services, financial support services, human resource support services, information technology support services, legal support services, and public relations support services.	55.5	5	7.3 M	1.8 M				

**Table 3: Biennium Budget Reductions**

The administration excluded HHSC from the requirement to submit tiered mandatory reductions to baseline funding for the FB 2009-2011 biennium budget. Extraordinary actions were taken by HHSC regions to develop FY 2009-2011 budgets that are in line with funding advice provided by the Director of Finance. The fiscal and operational magnitude of those actions are described in the narrative section, starting on page 2.

Table 3  
Biennium Budget Reductions

#	<u>Description of Reduction</u>	<u>Prog ID/Org</u>	<u>Pos</u>	<u>Pos</u>	<u>Pos</u>	<u>Pos</u>	<u>MOF</u>
1	N/A	(P) 10	(T) 10	(P) 11	(T) 11	\$\$\$\$ 11	MOF
2							
3							
4							
5							

**Table 4: Biennium Budget Additions**

No additions were made to the activities of HHSC or the HHSC regions resulting in increases to the HHSC budget beyond the baseline general funds subsidy in the executive budget, which essentially bring forward the funding base of general funds subsidy and collective bargaining funding from the previous biennium budget. Increase in special fund ceiling will be covered by additional cash revenues from operations, therefore requiring no increase in budgeting for the state general fund.

Table 4  
Biennium Budget Additions

<u>Description of Addition</u>	<u>Prog ID/Org</u>	<u>Pos (P) 10</u>	<u>Pos (T) 10</u>	<u>Pos (P) 11</u>	<u>Pos (T) 11</u>	<u>MOF</u>
Special Fund Ceiling Increase	HTH 210/LA					B
				\$\$\$\$ 10	\$\$\$\$ 11	
				67,151,106	84,165,106	

For reference, distribution by facility and region of \$83,690,000 in general fund subsidy for FY2010 and FY 2011 is provided.

Hawaii Health Systems General Fund Request in 000's	Base General Funds In Executive Budget Submission	
	FY 2010	FY 2011
<b>HTH 210</b>		
East HI	21018	21018
East HI	2135	2135
East HI	1328	1328
<b>East HI Total</b>	<b>24481</b>	<b>24481</b>
West HI	10030	10030
West HI	1193	1193
<b>West HI Total</b>	<b>11223</b>	<b>11223</b>
Maui	22476	22476
Maui	3753	3753
Maui	1027	1027
<b>Maui Total</b>	<b>27256</b>	<b>27256</b>
Kauai	5901	5901
Kauai	2884	2884
<b>Kauai Total</b>	<b>8785</b>	<b>8785</b>
Oahu	5779	5779
Oahu	4616	4616
<b>Oahu Total</b>	<b>10395</b>	<b>10395</b>
<b>Corp</b>	<b>320</b>	<b>320</b>
<b>TOTAL</b>	<b>82140</b>	<b>82140</b>
<b>HTH 211</b>		
<b>Kahuku Medical Center</b>	<b>1500</b>	<b>1500</b>

\$10 million in CIP funds is included in the executive budget submission for HHSC for both FY 2010 and FY 2011. HHSC regions requested totals of \$321,541,000 in CIP funding for FY 2010 and \$78,124,000 in CIP funding for FY 2011 for important and urgent initiatives; summary by region follows:

Hawaii Health Systems Corporation  
 Biennium Budget  
 CIP Request

CIP Request in 000's	FY	
	2010	2011
East HI Total	49663	53792
West HI Total	14212	16395
Maui Total	146850	0
Kauai Total	94414	4760
Oahu Total	19402	3177
<b>TOTAL</b>	<b>324541</b>	<b>78124</b>

**Table 5: Restrictions**

To date, the governor has imposed a four percent (4%) restriction on HHSC's FY 09 general funds subsidy, or \$2,204,918 of total FY 09 general funds subsidy of \$55,123,000. The funding restriction was applied proportionally (based on budgeted distribution of FY 09 general funds subsidy) to program IDs HTH 210 (HHSC) and HTH 211 (Kahuku Medical Center) and to the twelve facilities of HHSC:

<u>HTH 210</u> –	<u>FY 09 restriction = \$2,144,918</u>	
	Hilo Medical Center	\$ 555,560
	Hale Ho`ola Hamakua	\$ 61,240
	Ka`u Hospital	\$ 38,640
	Kona Community Hospital	\$ 259,560
	Kohala Hospital	\$ 31,200
	Maui Memorial Medical Center	\$ 540,800
	Kula Hospital	\$ 93,480
	Lanai Community Hospital	\$ 32,120
	Kaui Veterans Memorial Hospital	\$ 172,600
	Samuel Mahelona Memorial Hospital	\$ 78,120
	Leahi Hospital	\$ 154,480
	Maluhia	\$ 127,120
<u>HTH 211</u> –	<u>FY 09 restriction = \$60,000</u>	
	Kahuku Medical Center	\$ 60,000

Impact: The \$2,204,920 general funds restriction added to the cash flow shortfall for HHSC and the regions for FY 09. Previously a FY 09 cash flow shortfall of \$62 million was identified for the year. With the funding restriction, the projected shortfall became over \$64 million. While regions and the corporate office are making best efforts to implement FY 09 contingency plans to manage the shortfall, as discussed in the narrative section beginning on page 2, the funding restriction has affected the ability of HHSC facilities to pay for goods and services. The system-wide accounts payable total of \$31.4 million as of December 22, 2008 could have been reduced by up to \$2 million or more, if the funding restriction had not been required. This demonstrates that, for HHSC, cash flow shortfall is immediately reflected in reduced payments to the companies that provide goods and services to HHSC and its facilities.



FY 2010 AND FY 2011 Impact: As of now, the FY 09 restriction is not being applied to baseline general funds subsidy for FY 2010 and FY 2011. However, additional accounts payable of up to \$2.2 million will likely be carried forward into FY 2010 as a result of the FY 09 restriction. The FY 2010 budgets for HHSC and the regions and facilities of HHSC do not include additional funds to pay off the \$2.2 million increase in accounts payable.

### **Other Sources of Revenue**

The majority of cash revenues for HHSC regions is generated from collections from private sector health plans, from individuals, and from government health plans such as Medicaid and Medicare. HHSC and its facilities also receive limited amount of interest earnings on deposits in financial institutions

Budgeted system-wide cash collections and interest earnings for FY 2010 total \$440,505,000

Budgeted system-wide cash collections and interest earnings for FY 2011 total \$475,780,000.

**Capital Improvement Program (CIP) Budget**

**Capital Improvement Requests for Fiscal Biennium 2009-2011**

1. LUMP-SUM CIP, REPAIR AND MAINTENANCE, STATEWIDE

DESIGN, CONSTRUCTION, AND EQUIPMENT TO IMPLEMENT REPAIR AND MAINTENANCE PROJECTS FOR THE HAWAII HEALTH SYSTEMS CORPORATION, STATEWIDE

	<u>FY 2010</u>	<u>FY 2011</u>
Design	499 C	499 C
Construction	9500 C	9500 C
Equipment	1 C	1 C

Explanation and Scope of Project

To implement repair and maintenance projects for the Hawaii Health Systems Corporation.

Justification for the Project

All HHSC facilities are in need of reroofing, repainting, resurfacing, interior and exterior repairs, plumbing, electrical and or air conditioning work.

**Senate District** (Statewide)

**House District** (Statewide)

**Table 6 Program ID Program Performance Results**

Table 6  
 Prog ID  
 Program Performance Results

#	<u>Measures of Effectiveness</u>	<u>Direction of Success</u> (increase/decrease)	<u>FY07 Result</u>	<u>FY08 Result</u>	<u>FY09 Plan</u>	<u>FY10 Plan</u>
			1	Average of Operating Cost per Patient Day (excl equipment)	decrease	1095.14
2	Average Patient Revenue Per Patient Day	increase	917.27	972.42	1025.07	103
3	Occupancy Rate - Acute Care	increase	67.96	67.48	68.55	7
4	Occupancy Rate - Long-term Care	increase	97.61	97.34	98.87	9

## **Program Performance**

Quality “patient safe”, accessible and affordable healthcare efficiently provided by HHSC facilities to all communities served. Details available upon request.

Results relate to the program’s objectives and department’s mission:

Mission accomplished. Successfully fulfilled HHSC Safety-Net mission with quality outcomes.

Program activities were accomplished in the past year (FY08), with 22,763 in-patient admissions and 119,549 acute care patient days, 1,195 long-term care admissions, 282,651 long-term care patient days, 3,874 babies born, and 102,162 emergency room visits.

### **Effectiveness of the program and performance results achieved:**

All 15 HHSC facilities are fully certified and have maintained their licensure by both State & National standards. All HHSC facilities are certified annually by Medicare/Medicaid and all have successfully passed those surveys.

HHSC also continues its long-standing participation with Hawaii Medical Services Association (HMSA) Hospital Quality and Service Recognition program that offers financial incentives for meeting performance indicators related to patient care quality.

All four HHSC Joint Commission accredited facilities continue to focus efforts on the value of accreditation process and we are pleased to report that all four facilities received full three year accreditation by the Joint Commission in unannounced surveys during 2008.

In addition, HHSC annually has a detailed independent third party financial audit conducted for the entire system. HHSC has just received its eleventh consecutive “clean” unqualified audit with no material weaknesses and no reportable conditions. Furthermore, HHSC has a myriad of internal reporting / performance measures that are utilized by the board of Directors and management to insure compliance, quality and financial efficiency in all system work. Details available upon request.

**Actions taken by each program to improve its performance results:**

Facilities have used past survey results and recent changes in survey guidelines to establish monitoring and process improvement initiatives that are actively being managed. The results of these efforts should be seen in the outcomes of CMS licensure surveys and findings. Although there are occasional short-term set backs, long term aggregate results are very positive.

**Modifications to the system's performance measures:**

As necessary, HHSC internal reporting / performance measures are continually adjusted and revamped to meet the ever-changing needs of today's fluid healthcare environment. Some examples are in annual reporting measures on workers compensation; new revenue enhancing measures; and additional quality measures involving patient safety.

Annually, HHSC focuses on new national patient safety goals most recently approved by Joint Commission as it relates to hospitals and critical access hospitals. Details available upon request.

## Attachments 1 - 8

### **Attachment 1: Department-Wide Summary Information**

Please provide totals for the department's FY09 budget with restrictions and emergency requests by Means of Financing (MOF). Please provide the proposed FY10 and FY11 operating budget adjustments by MOF. Beginning with your department's appropriation from Act 158, Session Laws of Hawaii 2008, provide proposed adjustments for collective bargaining, all reductions, all additions, and the resultant total for all MOF.

### **Attachment 2: FY09 Proposed Emergency Requests**

Please identify all emergency requests that your department will be seeking for FY09 by MOF. If none, please indicate "none".

### **Attachment 3: Program ID Totals**

Please provide the position count and dollar amount totals, by Program ID and by MOF, for each of the Program ID's in your department. Please include the title of the Program ID as well. Please provide these totals for both FY10 and FY11.

### **Attachment 4: Budget Decisions**

Please provide a summary of your department's requests to the Department of Budget and Finance (B&F), the funding decisions made by B&F, and the final funding decisions made by the Governor. Please list these requests in your department's priority order, with the most important being first. Please provide the position counts (both permanent and temporary) and dollar amounts for FY10 and FY11 by MOF. Please include the reductions submitted in response to the 20% scenario (Tier 3 from Executive Memorandum 08-10).

### **Attachment 5: Vacancy Report**

Please identify all positions that are vacant as of December 1, 2008. For each of these positions, please indicate the date of vacancy, the position title, position number, whether or not this position has exempt status, the amount budgeted for this position, and the amount actually paid for this position when it was last filled by MOF. Additionally, please indicate the Program ID this position is located in and if authority to hire was or was not granted.

### **Attachment 6: Expenditures Exceeding Federal Fund Ceiling**

Please provide a list of all instances when your department exercised Section 167 of Act 213, Session Laws of Hawaii 2007, as amended by Act 158, Session Laws of Hawaii 2008 (whenever your department was granted an increase in its expenditure ceiling for federal funds in excess of levels authorized by the Legislature) for FY08 and FY09 to date.

### **Attachment 7: Transfers**

Please provide a list of all instances when your department exercised Section 171 of Act 213, Session Laws of Hawaii 2007, as amended by Act 158, Session Laws of Hawaii 2008 (whenever your department transferred funds) for FY08 and FY09 to date.

### **Attachment 8: CIP Summary**

Please provide a summary of your entire department's CIP requests. Please list these projects in priority order, with the most important first. Please provide the title for the project as well as funding amounts requested by MOF.



Attachment 1  
 Department-Wide Summary Information (by MOF)  
 HAWAII HEALTH SYSTEMS CORPORATION

		Fiscal Year (FY) 2009			
		Restriction (b)	Emergency Request (c)	Total FY09 (a)+(b)+(c)	MOF
Act 158/08 Appropriation (a)				51,478,043	A
		(2,144,918)		403,460,000	B
			-	-	
		(2,144,918)	-	454,938,043	Total

		Fiscal Year (FY) 2010			
		Reduction (f)	Additions (g)	Total FY10 (d)+(e)+(f)+(g)	MOF
Act 158/08 Appropriation (d)				82,460,894	A
			67,151,106	470,611,106	B
				-	
			67,151,106	553,072,000	Total

		Fiscal Year (FY) 2011			
		Reduction (j)	Additions (k)	Total FY11 (h)+(i)+(j)+(k)	MOF
Act 158/08 Appropriation (h)				82,460,894	A
			84,165,106	487,625,106	B
				-	
			84,165,106	570,086,000	Total

Please indicate restrictions and reductions as negative numbers, using brackets ( )

Attachment 1  
 Department-Wide Summary Information (By MOF)  
 KAHIKUJ MEDICAL CFNTFB  
 Fiscal Year (FY) 2009

Act 158/08 Appropriation (a) 1,500,000		Emergency Request (c)	Total FY09 (a)+(b)+(c) 1,440,000	MOF A
	Restriction (b) (60,000)		-	
			-	
1,500,000	(60,000)	-	1,440,000	Total

Act 158/08 Appropriation (d) 1,500,000	Collective Bargaining (e)	Additions (g)	Total FY10 (d)+(e)+(f)+(g) 1,500,000	MOF A
			-	
			-	
1,500,000	-	-	1,500,000	Total

Act 158/08 Appropriation (h) 1,500,000	Collective Bargaining (i)	Additions (k)	Total FY11 (h)+(i)+(j)+(k) 1,500,000	MOF A
			-	
			-	
1,500,000	-	-	1,500,000	Total

Please indicate restrictions and reductions as negative numbers, using brackets ( )

Attachment 2  
FY09 Proposed Emergency Requests

<u>Program ID</u>	<u>Description of Emergency Request</u>	<u>FTE</u>	<u><del>\$\$\$</del></u>	<u>MOF</u>
-------------------	---	------------	--------------------------	------------

Governor declined to submit emergency appropriation request for HHSC for FY2009

Attachment 3  
Program ID Totals

<u>Prog ID</u>	<u>Title</u>	<u>Pos 10</u>	<u>\$\$\$ 10</u>	<u>Pos 11</u>	<u>\$\$\$ 11</u>	<u>MOF</u>
HTH 210	Hawaii Health Systems Corporation	2,836.25	470,611,106	2,836.25	487,625,106	B
HTH 210	Hawaii Health Systems Corporation		82,460,894		82,460,894	A
HTH 211	Kahuku Medical Center		1,500,000		1,500,000	A





HHSC VACANCIES  
DEC. 2008

Facility	Department	Position	PosDescription	Exempt Position?	Vacancy Date	Amount Budgeted for this Position	Amount Actually Paid for this position when it was last filled	Authorized or Not Authorized to Recruit
HAWAII HEALTH SYSTEMS CORP	HILO DATA CENTER	55375	COMPUTER OPERATOR II		1/21/2005	\$ 35,000.00	\$ 33,756.00	Not Authorized to Recruit
HAWAII HEALTH SYSTEMS CORP	PURCHASING & STORES	55756	CONTRACTS MANAGER I		1/19/2008	\$ 58,000.00	\$ 55,488.00	Authorized to Recruit
HAWAII HEALTH SYSTEMS CORP	HILO DATA CENTER	56601	DATA PROC SYSTEMS ANALYST V		11/1/2008	\$ 58,000.00	\$ 51,312.00	Authorized to Recruit
HAWAII HEALTH SYSTEMS CORP	HOSPITAL ADMINISTRATION	109342	DIR OF QUAL ASSUR	Exempt	12/2/2008	\$ 113,000.00		Authorized to Recruit
HALE HO'OLA HAMAKUA	SNF-ICF	20214	LICENSED PRACTICAL NURSE FP		6/10/2008	\$35,828.00	\$28,380.00	Authorized to Recruit
HALE HO'OLA HAMAKUA	SNF-ICF	20215	LICENSED PRACTICAL NURSE FP		2/12/2008	\$36,929.00	\$10,530.00	Authorized to Recruit
HALE HO'OLA HAMAKUA	GENERAL ACCOUNTING	45545	ACCOUNTANT III		5/31/2008	\$51,312.00	\$42,144.00	Authorized to Recruit
HALE HO'OLA HAMAKUA	SNF-ICF	49457	CERTIFIED NURSE AIDE ENTRY		10/8/2008	\$32,364.00	\$30,528.00	position's authorized level is FP.
HALE HO'OLA HAMAKUA	DIETARY	49464	KITCHEN HELPER		7/2/2008	\$32,856.00	\$31,596.00	Authorized to Recruit
HALE HO'OLA HAMAKUA	NURSING ADMIN-LTC	54417	RECREATIONAL AIDE FP		2/1/2008	\$34,440.00	\$32,736.00	Authorized to Recruit
HALE HO'OLA HAMAKUA	OCCUPATIONAL THERAPY	55475	OCCUPATIONAL THERAPIST III		9/23/2006	\$21,070.40	\$19,479.20	Authorized to Recruit
HALE HO'OLA HAMAKUA	RADIOLOGY-DIAGNOSTIC	58035	RADIOLOGIC TECH FP		2/1/2007	\$18,980.00	\$16,213.60	Authorized to Recruit
HALE HO'OLA HAMAKUA	HOSPITAL ADMINISTRATION	102125	HOSPITAL ADMINISTRATOR	Exempt	6/30/2007	\$99,000.00	\$98,075.84	Authorized to Recruit
HALE HO'OLA HAMAKUA	SNF-ICF	108739	PER DIEM NURSE	Exempt	12/10/2008	\$36.02	\$26.25	Authorized to Recruit
HALE HO'OLA HAMAKUA	SNF-ICF	109103	PER DIEM LPN	Exempt	6/12/2008	\$21.44	\$20.62	Authorized to Recruit
HALE HO'OLA HAMAKUA	NURSING ADMIN-LTC	109290	DIRECTOR OF NURSING	Exempt	8/25/2008	\$86,000.00	\$78,072.00	Authorized to Recruit
HILO MEDICAL CENTER	RADIOLOGY-DIAGNOSTIC	20317	MEDICAL TRANSCRIPTIONIST		10/25/2008	\$30,036.00	\$39,480.00	Authorized to Recruit
HILO MEDICAL CENTER	DIETARY	20327	COOK IV		11/30/2008	\$46,008.00	\$46,920.00	Authorized to Recruit
HILO MEDICAL CENTER	DIETARY	20336	ASSISTANT TO THE DIETITIAN		10/30/2008	\$33,780.00	\$33,780.00	Authorized to Recruit
HILO MEDICAL CENTER	HOUSEKEEPING	20360	JANITOR SUPERVISOR II		2/1/2008	\$39,036.00	\$37,536.00	Authorized to Recruit
HILO MEDICAL CENTER	GROUPS	20424	GENERAL LABORER II		5/16/2008	\$33,780.00	\$28,143.00	Authorized to Recruit
HILO MEDICAL CENTER	MEDICAL RECORDS	20428	HEALTH INFO TECH I		8/1/2008	\$28,836.00	\$31,212.00	Authorized to Recruit
HILO MEDICAL CENTER	OBSTETRICS ACUTE	20473	REGISTERED PROF NURSE V		12/3/2007	\$87,780.00	\$81,168.00	Incumbent currently TAing into position.
HILO MEDICAL CENTER	EMERGENCY SERVICES	20484	REGISTERED PROF NURSE III		8/22/2008	\$68,736.00	\$78,072.00	Authorized to Recruit
HILO MEDICAL CENTER	MED/SURG SNF	20485	REGISTERED PROF NURSE III		10/12/2007	\$68,736.00		Authorized to Recruit
HILO MEDICAL CENTER	EMERGENCY SERVICES	20494	REGISTERED PROF NURSE III		9/30/2008	\$68,736.00	\$74,328.00	Authorized to Recruit
HILO MEDICAL CENTER	CORONARY CARE	20526	REGISTERED PROF NURSE III		4/30/2008	\$68,736.00	\$71,412.00	Authorized to Recruit
HILO MEDICAL CENTER	MED-SURG INTENSIVE CARE	20541	REGISTERED PROF NURSE III		12/19/2008	\$68,736.00	\$74,328.00	Authorized to Recruit
HILO MEDICAL CENTER	INTERMEDIATE CARE	20573	LICENSED PRACTICAL NURSE FP		8/1/2008	\$36,828.00	\$44,604.00	Authorized to Recruit
HILO MEDICAL CENTER	EMERGENCY SERVICES	20613	EMERGENCY ROOM ASST ENTRY		6/1/2008	\$36,828.00	\$ 39,708.00	position's authorized level is FP.

HHSC VACANCIES  
DEC. 2008

Facility	Department	Position	PosDescription	Exempt Position?	Vacancy Date	Amount Budgeted for this Position	Amount Actually Paid for this position when it was last filled	Authorized or Not Authorized to Recruit
HILO MEDICAL CENTER	BIOMED	20629	BIOMED ENG TECH III		8/1/2005	\$55,824.00	\$46,275.60	Incumbent of position TAng into position 54862; position authorized at IV level
HILO MEDICAL CENTER	SURGICAL ACUTE	20632	LICENSED PRACTICAL NURSE FP		11/29/2008	\$36,828.00	\$44,604.00	Authorized to Recruit
HILO MEDICAL CENTER	INTERMEDIATE CARE	20641	LICENSED PRACTICAL NURSE FP		4/22/2008	\$36,828.00	\$44,604.00	Authorized to Recruit
HILO MEDICAL CENTER	MEDICAL ACUTE	20643	NURSE AIDE ENTRY		4/14/2008	\$32,364.00	\$30,534.40	Authorized to Recruit; authorized level for position is FP
HILO MEDICAL CENTER	EMERGENCY SERVICES	20644	CERTIFIED NURSE AIDE FP		7/27/2008	\$32,364.00	\$27,900.00	Authorized to Recruit
HILO MEDICAL CENTER	INTERMEDIATE CARE	20646	LICENSED PRACTICAL NURSE ENTRY		3/7/2008	\$36,828.00		Authorized to Recruit
HILO MEDICAL CENTER	EMERGENCY SERVICES	20676	NURSE AIDE ENTRY		3/1/2008	\$32,364.00	\$34,284.00	Authorized to Recruit
HILO MEDICAL CENTER	MEDICAL RECORDS	20695	HEALTH INFO TECH I		8/21/2008	\$28,836.00	\$30,036.00	Authorized to Recruit
HILO MEDICAL CENTER	MEDICAL ACUTE	25169	REGISTERED PROF NURSE III		8/7/2008	\$68,736.00	\$74,328.00	Authorized to Recruit
HILO MEDICAL CENTER	MEDICAL ACUTE	25289	REGISTERED PROF NURSE III		12/1/2008	\$68,736.00	\$80,004.00	Authorized to Recruit
HILO MEDICAL CENTER	ADMITTING	26470	ADMITTING CLERK I		5/24/2008	\$13,873.60	\$26,688.00	Authorized to Recruit; position at 50% FTE
HILO MEDICAL CENTER	INFECTION CONTROL	33236	REGISTERED PROF NURSE VI		11/15/2008	\$80,376.00	\$91,216.00	Authorized to Recruit
HILO MEDICAL CENTER	INTERMEDIATE CARE	33929	CERTIFIED NURSE AIDE ENTRY		10/1/2008	\$32,364.00	\$32,364.00	Authorized level for position is FP
HILO MEDICAL CENTER	INTERMEDIATE CARE	38564	CERTIFIED NURSE AIDE FP		12/20/2008	\$32,364.00	\$32,364.00	Authorized to Recruit
HILO MEDICAL CENTER	INTERMEDIATE CARE	38754	CERTIFIED NURSE AIDE FP		8/30/2008	\$32,364.00	\$32,364.00	Authorized to Recruit
HILO MEDICAL CENTER	EMERGENCY SERVICES	38856	CERTIFIED NURSE AIDE FP		6/27/2008	\$32,364.00	\$31,116.00	Authorized to Recruit
HILO MEDICAL CENTER	MEDICAL ACUTE	44745	EMERGENCY ROOM ASST FP		9/18/2008	\$36,828.00	\$36,828.00	Authorized to Recruit
HILO MEDICAL CENTER	MEDICAL ACUTE	44778	CERTIFIED NURSE AIDE FP		5/29/2008	\$32,364.00	\$31,116.00	Authorized to Recruit
HILO MEDICAL CENTER	SURGICAL ACUTE	45808	REGISTERED PROF NURSE III		11/10/2007	\$68,736.00		Authorized to Recruit
HILO MEDICAL CENTER	SURGERY GEN-MAJOR	47838	REGISTERED PROF NURSE III		7/1/2008	\$68,736.00	\$73,236.00	Authorized to Recruit
HILO MEDICAL CENTER	ADMITTING	51508	ADMITTING CLERK I		11/1/2008	\$27,756.00	\$31,212.00	Authorized to Recruit
HILO MEDICAL CENTER	DIETARY	52208	KITCHEN HELPER		10/24/2008	\$32,856.00	\$32,856.00	Authorized to Recruit
HILO MEDICAL CENTER	MEDICAL ACUTE	53577	HEALTH UNIT CLERK II		7/19/2008	\$27,756.00	\$27,756.00	Authorized to Recruit
HILO MEDICAL CENTER	NURSING ADMIN-ICF	53716	ACTIVITIES COORDINATOR FP		5/2/2008	\$39,708.00	\$38,784.00	Authorized to Recruit
HILO MEDICAL CENTER	EMERGENCY SERVICES	53757	HEALTH UNIT CLERK II		10/16/2008	\$27,756.00	\$23,952.00	Authorized to Recruit
HILO MEDICAL CENTER	INTERMEDIATE CARE	54083	REGISTERED PROF NURSE III		7/1/2008	\$68,736.00	\$66,096.00	Authorized to Recruit
HILO MEDICAL CENTER	NURSING ADMIN-ICF	54148	REGISTERED PROF NURSE III		10/15/2007	\$68,736.00		Authorized to Recruit
HILO MEDICAL CENTER	SURGICAL ACUTE	54284	REGISTERED PROF NURSE III		11/10/2008	\$68,736.00	\$76,164.00	Authorized to Recruit
HILO MEDICAL CENTER	SURGICAL ACUTE	54289	REGISTERED PROF NURSE III		2/19/2008	\$68,736.00		Authorized to Recruit



HHSC VACANCIES  
DEC. 2008

Facility	Department	Position	PosDescription	Exempt Position?	Vacancy Date	Amount Budgeted for this Position	Amount Actually Paid for this position when it was last filled	Authorized or Not Authorized to Recruit
HILO MEDICAL CENTER	EMERGENCY SERVICES	54296	NURSE AIDE ENTRY		4/5/2008	\$32,364.00	\$30,756.00	Authorized to Recruit; authorized level for position is FP
HILO MEDICAL CENTER	DIETARY	54364	COOK III		9/2/2008	\$43,788.00	\$43,788.00	Authorized to Recruit
HILO MEDICAL CENTER	PATIENT ACCOUNTING	54443	CLERK III		11/20/2008	\$25,668.00	\$25,668.00	Authorized to Recruit
HILO MEDICAL CENTER	SURGERY GEN-MAJOR	54600	SURGICAL TECHNICIAN FP		9/6/2008	\$36,828.00	\$36,828.00	Authorized to Recruit
HILO MEDICAL CENTER	MEDICAL STAFF ADMIN	54604	CLERK TYPIST III		6/28/2008	\$27,756.00	\$26,668.00	Authorized to Recruit
HILO MEDICAL CENTER	FLOOR POOL	55117	REGISTERED PROF NURSE III		4/14/2008	\$68,736.00		Authorized to Recruit
HILO MEDICAL CENTER	EMERGENCY SERVICES	55118	REGISTERED PROF NURSE III		5/27/2008	\$68,736.00		Authorized to Recruit
HILO MEDICAL CENTER	FLOOR POOL	55119	REGISTERED PROF NURSE III		3/3/2008	\$68,736.00		Authorized to Recruit
HILO MEDICAL CENTER	PATIENT ACCOUNTING	55282	PATIENT FIN SVCS MGR II		6/1/2007	\$55,500.00		Authorized to Recruit
HILO MEDICAL CENTER	NURSING ADMIN-ACUTE	55436	REGISTERED PROF NURSE VI		3/17/2008	\$80,376.00	\$73,566.00	Authorized to Recruit
HILO MEDICAL CENTER	MEDICAL ACUTE	55587	REGISTERED PROF NURSE III		2/19/2008	\$68,736.00		Authorized to Recruit
HILO MEDICAL CENTER	MEDICAL ACUTE	55588	REGISTERED PROF NURSE III		2/19/2008	\$68,736.00		Authorized to Recruit
HILO MEDICAL CENTER	HOSPITAL ADMINISTRATION	55589	REG COMPL & PRIVACY OFFCR		12/5/2005	\$51,312.00		Authorized to Recruit; incumbent T'ing
HILO MEDICAL CENTER	PSYCH ACUTE-ADULT	55617	REGISTERED PROF NURSE III		9/7/2008	\$68,736.00	\$74,328.00	Authorized to Recruit
HILO MEDICAL CENTER	PSYCH ACUTE-ADULT	55712	REGISTERED PROF NURSE III		10/7/2008	\$68,736.00	\$76,164.00	Authorized to Recruit
HILO MEDICAL CENTER	MED-SURG INTENSIVE CARE	55765	TELEMETRY TECHNICIAN FP		10/22/2008	\$36,828.00	\$36,828.00	Authorized to Recruit
HILO MEDICAL CENTER	COMPUTED TOMOGRAPHIC SCAN	55804	RADIOLOGY SPCLST II		12/2/2008	\$44,412.00	\$46,176.00	Authorized to Recruit
HILO MEDICAL CENTER	ULTRASONOGRAPHY	55870	RADIOLOGY SPCLST II		7/1/2006	\$44,412.00	\$41,059.20	Authorized to Recruit
HILO MEDICAL CENTER	ULTRASONOGRAPHY	55811	RADIOLOGY SPCLST II		7/1/2006	\$44,412.00		Authorized to Recruit
HILO MEDICAL CENTER	ULTRASONOGRAPHY	55813	RADIOLOGY MULTI SPCLST II		10/16/2007	\$46,176.00		Authorized to Recruit
HILO MEDICAL CENTER	UTILIZATION REVIEW	56002	SOCIAL WORKER IV		12/2/2008	\$45,576.00	\$45,576.00	Authorized to Recruit
HILO MEDICAL CENTER	MEDICAL RECORDS	56034	HEALTH INFO TECH I		2/1/2007	\$28,836.00		Authorized to Recruit
HILO MEDICAL CENTER	MEDICAL STAFF ADMIN	56047	MEDICAL STAFF SVCS COORD		2/1/2007	\$51,312.00		Authorized to Recruit; incumbent T'ing
HILO MEDICAL CENTER	MEDICAL RECORDS	56212	MEDICAL TRANSCRIPTIONIST		6/18/2007	\$30,036.00		Authorized to Recruit
HILO MEDICAL CENTER	RADIOLOGY-DIAGNOSTIC	56214	MEDICAL TRANSCRIPTIONIST		11/24/2008	\$30,036.00		Authorized to Recruit
HILO MEDICAL CENTER	RADIOLOGY-DIAGNOSTIC	56338	RADIOLOGIC TECH LEAD		2/27/2008	\$41,040.00		Authorized to Recruit; incumbent T'ing
HILO MEDICAL CENTER	PATIENT ACCOUNTING	56339	HOSPITAL BILLING CLERK I		2/28/2008	\$26,700.00	\$26,707.02	Authorized to Recruit
HILO MEDICAL CENTER	RADIOLOGY-DIAGNOSTIC	56479	CLERK III		7/8/2008	\$25,668.00	\$25,668.00	Authorized to Recruit
HILO MEDICAL CENTER	CARDIOLOGY	56483	NURSE PRACTITIONER II		4/3/2008	\$93,972.00		Authorized to Recruit
HILO MEDICAL CENTER	HUMAN RESOURCES	56498	PERSONNEL MGMT SPECIALIST V		5/15/2008	\$51,312.00		Authorized to Recruit; incumbent T'ing
HILO MEDICAL CENTER	HOSPITAL ADMINISTRATION	56500	HOSPITAL MANAGEMENT OFFICER		8/20/2008	\$97,176.00		Authorized to Recruit

HHSC VACANCIES  
DEC. 2008

Facility	Department	Position	PosDescription	Exempt Position?	Vacancy Date	Amount Budgeted for this Position	Amount Actually Paid for this position when it was last filled	Authorized or Not Authorized to Recruit
HILO MEDICAL CENTER	EMERGENCY SERVICES	56502	REGISTERED PROF NURSE IV		9/16/2008	\$74,328.00		Authorized to Recruit, Grievance settlement.
HILO MEDICAL CENTER	EMERGENCY SERVICES	56503	REGISTERED PROF NURSE IV		9/16/2008	\$74,328.00		Authorized to Recruit, Grievance settlement.
HILO MEDICAL CENTER	EMERGENCY SERVICES	56504	REGISTERED PROF NURSE IV		9/16/2008	\$74,328.00		Authorized to Recruit, Grievance settlement.
HILO MEDICAL CENTER	EMERGENCY SERVICES	56505	REGISTERED PROF NURSE IV		9/16/2008	\$74,328.00		Authorized to Recruit, Grievance settlement.
HILO MEDICAL CENTER	EMERGENCY SERVICES	56506	REGISTERED PROF NURSE IV		9/16/2008	\$74,328.00		Authorized to Recruit, Grievance settlement.
HILO MEDICAL CENTER	EMERGENCY SERVICES	56508	REGISTERED PROF NURSE III		10/7/2008	\$68,736.00		Authorized to Recruit
HILO MEDICAL CENTER	DIETARY	56514	COOK III		11/6/2008	\$43,788.00		Authorized to Recruit
HILO MEDICAL CENTER	ADMITTING	56515	ADMITTING CLERK I		11/8/2008	\$13,878.00		Authorized to Recruit, position at 50%.
HILO MEDICAL CENTER	FLOAT POOL	56518	CLERK IV		12/1/2008	\$27,756.00		Authorized to Recruit, incumbent. TAing
HILO MEDICAL CENTER	NURSING ADMIN-ICF	56519	REGISTERED PROF NURSE IV		12/5/2008	\$74,328.00		Authorized to Recruit
HILO MEDICAL CENTER	ONCOLOGY ACUTE	102799	STUDENT HELPER I	Exempt	11/27/2008	\$7.25	\$7.25	Authorized to Recruit
HILO MEDICAL CENTER	SURGICAL ACUTE	108688	PER DIEM NURSE	Exempt	2/27/2008	\$36.62	\$36.62	Authorized to Recruit
HILO MEDICAL CENTER	EMERGENCY SERVICES	109057	PER DIEM CNA	Exempt	5/2/2008	\$18.35	\$18.35	Not authorized to recruit
HILO MEDICAL CENTER	ORTHOPEdic-ACUTE	109182	STAFF SURGEON	Exempt	8/1/2006	\$250,500.00	\$300,000.00	Not authorized to recruit
HILO MEDICAL CENTER	ORTHOPEDIC-ACUTE	109184	STAFF SURGEON	Exempt	7/1/2005	\$250,500.00		Not authorized to recruit
HILO MEDICAL CENTER	HOSPITALIST	109224	STAFF PHYSICIAN	Exempt	4/16/2006	\$250,500.00		Not authorized to recruit
HILO MEDICAL CENTER	MEDICAL PHYSICIANS	109295	STAFF PHYSICIAN	Exempt	4/3/2007	\$250,500.00		Not authorized to recruit
HILO MEDICAL CENTER	PEDIATRIC OUTPATIENT CLINIC	109309	STAFF PHYSICIAN	Exempt	12/16/2007	\$250,500.00		Authorized to Recruit
HILO MEDICAL CENTER	PEDIATRIC OUTPATIENT CLINIC	109310	STAFF PHYSICIAN	Exempt	12/16/2007	\$250,500.00		Authorized to Recruit
HILO MEDICAL CENTER	CARDIOLOGY	109313	STAFF PHYSICIAN	Exempt	4/22/2008	\$250,500.00		Authorized to Recruit
KAU HOSPITAL	HOUSEKEEPING	23001	JANITOR II		12/17/2008	\$32,856.00	\$32,856.00	Authorized to Recruit
KAU HOSPITAL	RADIOLOGY-DIAGNOSTIC	56320	RADIOLOGIC TECH FP		6/29/2008	\$18,984.00		Authorized to Recruit, position at 50% FTE
KAU HOSPITAL	SNF/ICF	56520	REGISTERED PROF NURSE III		12/5/2008	\$68,736.00		Authorized to Recruit
KOHALA HOSPITAL	SKILLED NURSING CARE	20172	CERTIFIED NURSE AIDE FP		12/4/2008	\$ 32,364.00	\$ 32,364.00	Authorized to Recruit
KOHALA HOSPITAL	DIETARY	20180	KITCHEN HELPER		12/1/2008	\$ 32,856.00	\$ 32,856.00	Authorized to Recruit
KOHALA HOSPITAL	RADIOLOGY-DIAGNOSTIC	20190	RADIOLOGIC TECH FP		11/22/2008	\$ 37,968.00	\$ 41,040.00	Authorized to Recruit
KOHALA HOSPITAL	SKILLED NURSING CARE	28733	LICENSED PRACTICAL NURSE FP		12/1/2008	\$ 36,828.00	\$ 35,004.00	Not authorized to recruit; to be abolished
KOHALA HOSPITAL	GENERAL ACCOUNTING	56289	CREDIT & COLLECTION CLERK		10/16/2007	\$ 31,212.00	\$0	TA only at this time
KOHALA HOSPITAL	PLANT MAINTENANCE	56578	CONSTR. & MAINT WORKER I		12/22/2008	\$ 43,824.00	\$0	Authorized to Recruit

HHSC VACANCIES  
DEC. 2008

Facility	Department	Position	Pos-Description	Exempt Position?	Vacancy Date	Amount Budgeted for this Position	Amount Actually Paid for this position when it was last filled	Authorized or Not Authorized to Recruit
KOHALA HOSPITAL	MED-SURG ACUTE	108653	PER DIEM NURSE	Exempt	11/27/2008	\$ 36.62	\$ 36.62	Authorized to Recruit
KOHALA HOSPITAL	MED-SURG ACUTE	108655	PER DIEM NURSE	Exempt	9/28/2008	\$ 36.62	\$ 36.62	Authorized to Recruit
KOHALA HOSPITAL	MED-SURG ACUTE	108657	PER DIEM NURSE	Exempt	2/15/2003	\$ 36.62	\$ 26.25	Authorized to Recruit
KOHALA HOSPITAL	SKILLED NURSING CARE	109108	PER DIEM LPN	Exempt	8/1/2008	\$ 21.44	\$ 21.44	Authorized to Recruit
KONA COMMUNITY HOSPITAL	NURSING ADMIN-ACUTE	20270	CERTIFIED NURSE AIDE ENTRY		8/13/2003	\$ 30,528.00	\$ 23,700.00	Authorized to Recruit
KONA COMMUNITY HOSPITAL	DIETARY	20278	KITCHEN HELPER		10/23/2008	\$0	\$ 32,856.00	Not authorized to recruit;Rif
KONA COMMUNITY HOSPITAL	OBSTETRICS ACUTE	21860	REGISTERED PROF NURSE III		4/5/2007	\$ 68,736.00	\$ 91,296.00	Authorized to Recruit
KONA COMMUNITY HOSPITAL	RADIOLOGY-DIAGNOSTIC	22368	RADIOLOGIC TECH LEAD		9/22/2008	\$ 41,040.00	\$ 30,888.00	Authorized to Recruit
KONA COMMUNITY HOSPITAL	NURSING ADMIN-ACUTE	25643	REGISTERED PROF NURSE VI		6/25/2008	\$ 80,376.00	\$ 83,556.00	Authorized to Recruit
KONA COMMUNITY HOSPITAL	SKILLED NURSING CARE	25857	CERTIFIED NURSE AIDE ENTRY		12/27/2007	\$ 30,528.00	\$ 25,908.00	Authorized to Recruit
KONA COMMUNITY HOSPITAL	EMERGENCY SERVICES	25859	EMERGENCY ROOM ASST FP		11/16/2006	\$0	\$ 32,844.00	Not authorized to recruit;Rif
KONA COMMUNITY HOSPITAL	MED-SURG ACUTE	25860	CERTIFIED NURSE AIDE ENTRY		10/24/2008	\$ 30,528.00	\$ 32,364.00	Authorized to Recruit
KONA COMMUNITY HOSPITAL	EMERGENCY SERVICES	26144	REGISTERED PROF NURSE III		11/27/2008	\$ 68,736.00	\$ 74,328.00	Authorized to Recruit
KONA COMMUNITY HOSPITAL	RADIOLOGY-DIAGNOSTIC	26145	RADIOLOGIC TECH FP		11/1/2008	\$ 37,968.00	\$ 49,932.00	Authorized to Recruit
KONA COMMUNITY HOSPITAL	LAUNDRY & LINEN	26150	LAUNDRY HELPER I		10/23/2008	\$0	\$ 32,856.00	Not authorized to recruit;Rif
KONA COMMUNITY HOSPITAL	EMERGENCY SERVICES	30996	REGISTERED PROF NURSE III		12/16/2008	\$ 68,736.00	\$ 76,164.00	Authorized to Recruit
KONA COMMUNITY HOSPITAL	CENTRAL SVCS & SUPPLIES	31001	CENTRAL SUPPLY AIDE II		10/23/2008	\$0	\$ 26,700.00	Not authorized to recruit;Rif
KONA COMMUNITY HOSPITAL	EMERGENCY SERVICES	31005	EMERGENCY ROOM ASST FP		10/22/2008	\$0	\$ 39,708.00	Not authorized to recruit;Rif
KONA COMMUNITY HOSPITAL	EMERGENCY SERVICES	31015	EMERGENCY ROOM ASST FP		10/22/2008	\$0	\$ 36,828.00	Not authorized to recruit;Rif
KONA COMMUNITY HOSPITAL	COMPUTED TOMOGRAPHIC SCAN	31092	RADIOLOGY SPCLST II		5/8/2008	\$ 44,412.00	\$ 46,200.00	Authorized to Recruit
KONA COMMUNITY HOSPITAL	GENERAL ACCOUNTING	31100	CREDIT & COLLECTION CLERK		5/12/2008	\$ 31,212.00	\$ 31,212.00	TA only at this time
KONA COMMUNITY HOSPITAL	INSERVICE EDUC-NURSING	34001	REGISTERED PROF NURSE III		11/21/2008	\$ 68,736.00	\$ 78,072.00	Authorized to Recruit
KONA COMMUNITY HOSPITAL	RADIOLOGY-DIAGNOSTIC	34191	CLERK TYPIST II		10/23/2008	\$0	\$ 27,732.00	Not authorized to recruit;Rif
KONA COMMUNITY HOSPITAL	PHARMACY	34199	PHARMACY TECHNICIAN ENTRY	Casual Hire	3/19/2007	\$0	\$14.68	Not authorized to recruit;Rif
KONA COMMUNITY HOSPITAL	FOUNDATIONS	35444	GENERAL LABORER II		9/23/2008	\$0	\$ 33,780.00	Not authorized to recruit;Rif
KONA COMMUNITY HOSPITAL	DIETARY	35775	KITCHEN HELPER		8/13/2008	\$0	\$ 32,856.00	Not authorized to recruit;Rif
KONA COMMUNITY HOSPITAL	GENERAL ACCOUNTING	35788	CLERK TYPIST II	Casual Hire	8/25/2006	\$0	\$12.34	Not authorized to recruit;Rif

HHSC VACANCIES  
DEC. 2008

Facility	Department	Position	PosDescription	Exempt Position?	Vacancy Date	Amount Budgeted for this Position	Amount Actually Paid for this position when it was last filled	Authorized or Not Authorized to Recruit
KONA COMMUNITY HOSPITAL	MEDICAL RECORDS	39856	CLERK III		8/13/2008	\$0	\$ 25,668.00	Not authorized to recruit;Rif
KONA COMMUNITY HOSPITAL	CENTRAL SVCS & SUPPLIES	40000	CENTRAL SUPPLY AIDE II		10/23/2008	\$0	\$ 32,424.00	Not authorized to recruit;Rif
KONA COMMUNITY HOSPITAL	EMERGENCY SERVICES	40333	EMERGENCY ROOM ASST FP		10/22/2008	\$0	\$ 39,708.00	Not authorized to recruit;Rif
KONA COMMUNITY HOSPITAL	RADIOLOGY-DIAGNOSTIC	41569	CLERK TYPIST II		9/1/2006	\$0	\$ 11.87	Not authorized to recruit;Rif
KONA COMMUNITY HOSPITAL	COMPUTED TOMOGRAPHIC SCAN	41941	RADIOLOGY SPCLST II		10/16/2006	\$ 44,412.00	\$ 41,064.00	Authorized to Recruit
KONA COMMUNITY HOSPITAL	SURG & RECVRY SVCS	42568	TRANSPORTER		8/13/2008	\$0	\$ 30,528.00	Not authorized to recruit;Rif
KONA COMMUNITY HOSPITAL	EMERGENCY SERVICES	44662	HEALTH UNIT CLERK II		10/4/2008	\$ 27,756.00	\$ 35,064.00	Authorized to Recruit
KONA COMMUNITY HOSPITAL	ULTRASONOGRAPHY	45383	RADIOLOGY SPCLST LEAD		11/5/2007	\$ 48,048.00	\$ 99,840.00	Authorized to Recruit
KONA COMMUNITY HOSPITAL	HOUSEKEEPING	45396	JANITOR II		8/13/2008	\$0	\$ 32,856.00	Not authorized to recruit;Rif
KONA COMMUNITY HOSPITAL	GENERAL ACCOUNTING	45839	CREDIT & COLLECTION CLERK		9/2/2008	\$ 31,212.00	\$ 37,968.00	TA only at this time
KONA COMMUNITY HOSPITAL	MED-SURG INTENSIVE CARE	45972	HEALTH UNIT CLERK II		12/2/2008	\$ 27,756.00	\$ 39,480.00	Authorized to Recruit
KONA COMMUNITY HOSPITAL	CENTRAL SVCS & SUPPLIES	47079	CENTRAL SUPPLY AIDE II		6/21/2008	\$0	\$ 24,684.00	Not authorized to recruit;Rif
KONA COMMUNITY HOSPITAL	CENTRAL SVCS & SUPPLIES	47080	CENTRAL SUPPLY AIDE I		8/13/2008	\$0	\$ 23,688.00	Not authorized to recruit;Rif
KONA COMMUNITY HOSPITAL	LAUNDRY & LINEN	47397	LAUNDRY HELPER I		10/7/2008	\$0	\$ 32,856.00	Not authorized to recruit;Rif
KONA COMMUNITY HOSPITAL	MED-SURG ACUTE	48426	REGISTERED PROF NURSE III		12/4/2008	\$ 68,736.00	\$ 74,328.00	Authorized to Recruit
KONA COMMUNITY HOSPITAL	EMERGENCY SERVICES	48471	REGISTERED PROF NURSE III		2/1/2008	\$ 68,736.00	\$ 66,096.00	Authorized to Recruit
KONA COMMUNITY HOSPITAL	PHARMACY	49193	PHARMACY TECHNICIAN FP		8/13/2008	\$0	\$ 34,440.00	Not authorized to recruit;Rif
KONA COMMUNITY HOSPITAL	NURSING ADMIN-ACUTE	49210	REGISTERED PROF NURSE III		3/22/2008	\$ 68,736.00	\$ 76,932.00	Authorized to Recruit
KONA COMMUNITY HOSPITAL	MEDICAL RECORDS	49215	CLERK III		8/21/2008	\$0	\$ 26,700.00	Not authorized to recruit;Rif
KONA COMMUNITY HOSPITAL	PSYCH ACUTE-ADULT	49426	REGISTERED PROF NURSE III		6/12/2007	\$ 68,736.00	\$ 68,064.00	Authorized to Recruit
KONA COMMUNITY HOSPITAL	GENERAL ACCOUNTING	50224	CREDIT & COLLECTION CLERK		5/31/2008	\$ 30,012.00	\$ 46,200.00	TA only at this time
KONA COMMUNITY HOSPITAL	GENERAL ACCOUNTING	50225	CLERK III		11/3/2008	\$0	\$ 28,836.00	Not authorized to recruit;Rif
KONA COMMUNITY HOSPITAL	INFECTION CONTROL	50226	CLERK IV		10/22/2008	\$0	\$ 31,212.00	Not authorized to recruit;Rif
KONA COMMUNITY HOSPITAL	MED-SURG INTENSIVE CARE	50580	REGISTERED PROF NURSE IV		6/1/2007	\$ 74,328.00	\$ 79,236.00	Authorized to Recruit
KONA COMMUNITY HOSPITAL	DIETARY	51026	KITCHEN HELPER		12/16/2008	\$ 32,856.00	\$ 32,856.00	Authorized to Recruit

HHSC VACANCIES  
DEC. 2008

Facility	Department	Position	PosDescription	Exempt Position?	Vacancy Date	Amount Budgeted for this Position	Amount Actually Paid for this position when it was last filled	Authorized or Not Authorized to Recruit
KONA COMMUNITY HOSPITAL	RADIOLOGY-DIAGNOSTIC	52222	CLERK TYPIST II		10/23/2008	\$0	\$ 33,756.00	Not authorized to recruit;Rif
KONA COMMUNITY HOSPITAL	DATA PROCESSING	53590	DATA PROC SYSTEMS ANALYST V		10/22/2008	\$0	\$ 73,044.00	Not Authorized to Recruit;Rif
KONA COMMUNITY HOSPITAL	RADIOLOGY-DIAGNOSTIC	53780	CLERK TYPIST II	Casual Hire	12/29/2007	\$0	\$18.98	Not Authorized to Recruit;Rif
KONA COMMUNITY HOSPITAL	RADIOLOGY-DIAGNOSTIC	53802	TRANSPORTER		9/25/2008	\$0	\$ 30,528.00	Not Authorized to Recruit;Rif
KONA COMMUNITY HOSPITAL	RADIOLOGY-DIAGNOSTIC	53803	TRANSPORTER		8/13/2008	\$0	\$ 30,528.00	Not Authorized to Recruit;Rif
KONA COMMUNITY HOSPITAL	HUMAN RESOURCES	53856	PERSONNEL MGMT SPECIALIST III		10/13/2008	\$0	\$ 47,412.00	Not Authorized to Recruit;Rif
KONA COMMUNITY HOSPITAL	PURCHASING & STORES	53863	STORES CLERK II		10/23/2008	\$0	\$ 26,700.00	Not Authorized to Recruit;Rif
KONA COMMUNITY HOSPITAL	DATA PROCESSING	53912	DATA PROC SYSTEMS ANALYST IV		10/23/2008	\$0	\$ 47,412.00	Not Authorized to Recruit;Rif
KONA COMMUNITY HOSPITAL	MEDICAL RECORDS	53917	CLERK III		8/13/2008	\$0	\$ 25,668.00	Not Authorized to Recruit;Rif
KONA COMMUNITY HOSPITAL	EMERGENCY SERVICES	53918	CLERK III		10/21/2008	\$0	\$ 30,036.00	Not Authorized to Recruit;Rif
KONA COMMUNITY HOSPITAL	HOSPITAL ADMINISTRATION	53952	SECRETARY II		10/23/2008	\$0	\$ 33,756.00	Not Authorized to Recruit;Rif
KONA COMMUNITY HOSPITAL	PSYCH ACUTE-ADULT	54002	REGISTERED PROF NURSE III		8/4/2008	\$ 68,736.00	\$ 78,072.00	Authorized to Recruit
KONA COMMUNITY HOSPITAL	PSYCH ACUTE-ADULT	54008	HEALTH UNIT CLERK II		8/28/2007	\$ 27,756.00	\$ 30,012.00	Authorized to Recruit
KONA COMMUNITY HOSPITAL	PSYCH ACUTE-ADULT	54188	CERTIFIED NURSE AIDE FP		12/16/2007	\$ 32,364.00	\$ 29,016.00	Authorized to Recruit
KONA COMMUNITY HOSPITAL	SKILLED NURSING CARE	54197	LICENSED PRACTICAL NURSE ENTRY		10/21/2008	\$ 34,440.00	\$ 34,440.00	Authorized to Recruit
KONA COMMUNITY HOSPITAL	MEDICAL RECORDS	54286	CLERK III		8/20/2008	\$0	\$ 28,836.00	Not Authorized to Recruit;Rif
KONA COMMUNITY HOSPITAL	RADIOLOGY-DIAGNOSTIC	54292	CLERK TYPIST II		10/23/2008	\$0	\$ 30,036.00	Not Authorized to Recruit;Rif
KONA COMMUNITY HOSPITAL	SKILLED NURSING CARE	54321	CERTIFIED NURSE AIDE FP		12/17/2007	\$ 32,364.00	\$ 30,756.00	Authorized to Recruit
KONA COMMUNITY HOSPITAL	QUALITY MANAGEMENT	54358	SECRETARY II		11/10/2008	\$0	\$ 35,064.00	Not Authorized to Recruit;Rif
KONA COMMUNITY HOSPITAL	EMERGENCY SERVICES	54446	EMERGENCY ROOM ASST FP		10/23/2008	\$0	\$ 36,828.00	Not Authorized to Recruit;Rif
KONA COMMUNITY HOSPITAL	NURSING ADMIN-ACUTE	54532	CERTIFIED NURSE AIDE ENTRY		11/16/2006	\$ 30,528.00	\$ 27,216.00	Authorized to Recruit
KONA COMMUNITY HOSPITAL	NURSING ADMIN-ACUTE	54533	CERTIFIED NURSE AIDE ENTRY		12/19/2001	\$ 30,528.00	\$ 13.41	Authorized to Recruit

HHSC VACANCIES  
DEC. 2008

Facility	Department	Position	PosDescription	Exempt Position?	Vacancy Date	Amount Budgeted for this Position	Amount Actually Paid for this position when it was last filled	Authorized or Not Authorized to Recruit
KONA COMMUNITY HOSPITAL	DIETARY	54619	DIETITIAN IV		11/3/2008	\$0	\$ 64,920.00	Not Authorized to Recruit; Rf
KONA COMMUNITY HOSPITAL	SOCIAL WORK SVCS	54694	CLERK III		10/23/2008	\$0	\$ 28,836.00	Not Authorized to Recruit; Rf
KONA COMMUNITY HOSPITAL	HOSPITAL ADMINISTRATION	54797	CLERK II		2/21/2002	\$0	\$ 11.39	Not Authorized to Recruit; Rf
KONA COMMUNITY HOSPITAL	HUMAN RESOURCES	54802	PERSONNEL MGMT SPECIALIST III		11/6/2008	\$0	\$ 55,500.00	Not Authorized to Recruit; Rf
KONA COMMUNITY HOSPITAL	DIETARY	54863	KITCHEN HELPER		8/13/2008	\$0	\$ 32,856.00	Not Authorized to Recruit; Rf
KONA COMMUNITY HOSPITAL	PSYCH ACUTE-ADULT	55170	CERTIFIED NURSE AIDE ENTRY		3/7/4/2008	\$ 30,528.00	\$ 3,116.00	Authorized to Recruit
KONA COMMUNITY HOSPITAL	SKILLED NURSING CARE	55396	CERTIFIED NURSE AIDE FP		9/31/2008	\$ 32,354.00	\$ 32,364.00	Authorized to Recruit
KONA COMMUNITY HOSPITAL	MED-SURG ACUTE	55398	REGISTERED PROF NURSE III		11/29/2008	\$ 68,736.00	\$ 68,736.00	Authorized to Recruit
KONA COMMUNITY HOSPITAL	HOUSEKEEPING	55439	JANITOR II		9/25/2008	\$0	\$ 32,856.00	Not Authorized to Recruit; Rf
KONA COMMUNITY HOSPITAL	SOCIAL WORK SVCS	55443	SOCIAL WORKER III		8/15/2008	\$0	\$ 40,512.00	Not Authorized to Recruit; Rf
KONA COMMUNITY HOSPITAL	PLANT MAINTENANCE	55483	CLERK TYPIST II		10/1/2008	\$0	\$ 39,480.00	Not Authorized to Recruit; Rf
KONA COMMUNITY HOSPITAL	HOUSEKEEPING	55522	INSTITUTION HOUSEKEEPER I		10/23/2008	\$0	\$ 37,836.00	Not Authorized to Recruit; Rf
KONA COMMUNITY HOSPITAL	PLANT MAINTENANCE	55523	CONSTR & MAINT WORKER II		7/16/2/2008	\$ 48,168.00	\$ 48,168.00	Authorized to Recruit
KONA COMMUNITY HOSPITAL	NURSING ADMIN-ACUTE	55557	REGISTERED PROF NURSE III		8/4/2008	\$ 68,736.00	\$ 74,328.00	Authorized to Recruit
KONA COMMUNITY HOSPITAL	PLANT MAINTENANCE	55637	BLDG MAINT WORKER I		5/1/2008	\$ 43,824.00	\$ 42,144.00	Authorized to Recruit
KONA COMMUNITY HOSPITAL	RESPIRATORY THERAPY	55651	RESPIRATORY THERAPY AIDE FP		2/2/2006	\$ 34,440.00	\$0	Not Authorized to Recruit
KONA COMMUNITY HOSPITAL	NURSING ADMIN-ACUTE	55753	REGISTERED PROF NURSE II		9/2/2008	\$ 57,828.00	\$ 57,828.00	Authorized to Recruit
KONA COMMUNITY HOSPITAL	RESPIRATORY THERAPY	55828	RESPIRATORY THERAPY AIDE FP		7/1/2006	\$ 34,440.00	\$0	Not Authorized to Recruit
KONA COMMUNITY HOSPITAL	PHARMACY	55830	PHARMACY TECHNICIAN ENTRY		12/7/2006	\$0	\$15.56	Not Authorized to Recruit; Rf
KONA COMMUNITY HOSPITAL	RADIOLOGY-DIAGNOSTIC	55834	RADIOLOGIC TECH FP		7/1/2006	\$ 44,412.00	\$0	Authorized to Recruit
KONA COMMUNITY HOSPITAL	ULTRASONOGRAPHY	55847	RADIOLOGY MULTI SPCLST II		7/1/2006	\$ 46,176.00	\$0	Authorized to Recruit
KONA COMMUNITY HOSPITAL	ULTRASONOGRAPHY	55848	RADIOLOGY MULTI SPCLST II		7/1/2006	\$ 46,176.00	\$0	Authorized to Recruit
KONA COMMUNITY HOSPITAL	MED-SURG ACUTE	55857	TELEMETRY TECHNICIAN ENTRY		11/1/2006	\$ 32,440.00	\$0	Not Authorized to Recruit
KONA COMMUNITY HOSPITAL	NURSING ADMIN-ACUTE	56000	REGISTERED PROF NURSE II		5/7/2008	\$ 57,828.00	\$ 66,096.00	Authorized to Recruit
KONA COMMUNITY HOSPITAL	NURSING ADMIN-ACUTE	56001	REGISTERED PROF NURSE III		4/25/2008	\$ 68,736.00	\$ 66,096.00	Authorized to Recruit
KONA COMMUNITY HOSPITAL	NURSING ADMIN-ACUTE	56006	REGISTERED PROF NURSE III		7/16/2008	\$ 68,736.00	\$ 57,828.00	Authorized to Recruit
KONA COMMUNITY HOSPITAL	NURSING ADMIN-ACUTE	56107	NURSE AIDE ENTRY	Casual Hire	3/19/2007	\$ 30,528.00	\$ 13.41	Authorized to Recruit
KONA COMMUNITY HOSPITAL	NURSING ADMIN-ACUTE	56108	NURSE AIDE ENTRY	Casual Hire	3/19/2007	\$ 30,528.00	\$ 13.41	Authorized to Recruit

HHSC VACANCIES  
DEC. 2008

Facility	Department	Position	PosDescription	Exempt Position?	Vacancy Date	Amount Budgeted for this Position	Amount Actually Paid for this position when it was last filled	Authorized or Not Authorized to Recruit
KONA COMMUNITY HOSPITAL	NURSING ADMIN-ACUTE	56109	NURSE AIDE ENTRY	Casual Hire	3/19/2007	\$ 30,528.00	\$ 13.41	Authorized to Recruit
KONA COMMUNITY HOSPITAL	NURSING ADMIN-ACUTE	56110	NURSE AIDE ENTRY	Casual Hire	3/19/2007	\$ 30,528.00	\$ 13.41	Authorized to Recruit
KONA COMMUNITY HOSPITAL	LAUNDRY & LINEN	56116	LAUNDRY HELPER I		10/23/2008	\$0	\$ 32,856.00	Not Authorized to Recruit;Rif
KONA COMMUNITY HOSPITAL	HOUSEKEEPING	56117	JANITOR II		8/16/2008	\$0	\$ 32,856.00	Not Authorized to Recruit;Rif
KONA COMMUNITY HOSPITAL	GENERAL ACCOUNTING	56280	PATIENT FINANCIAL COUNSELOR		10/10/2007	\$ 33,756.00	\$0	Authorized to Recruit
KONA COMMUNITY HOSPITAL	INSERVICE EDUC-NURSING	56288	CLERK IV		11/6/2008	\$0	\$ 32,424.00	Not Authorized to Recruit;Rif
KONA COMMUNITY HOSPITAL	OBSTETRICS ACUTE	56292	HEALTH UNIT CLERK I		5/16/2008	\$ 25,668.00	\$ 24,684.00	Authorized to Recruit
KONA COMMUNITY HOSPITAL	HOUSEKEEPING	56300	JANITOR II		8/13/2008	\$0	\$ 32,856.00	Not Authorized to Recruit;Rif
KONA COMMUNITY HOSPITAL	LAUNDRY & LINEN	56401	LAUNDRY HELPER I		7/1/2008	\$0	\$ 32,856.00	Not Authorized to Recruit;Rif
KONA COMMUNITY HOSPITAL	MED-SURG ACUTE	56403	CERTIFIED NURSE AIDE ENTRY		12/2/2008	\$ 30,528.00	\$ 30,528.00	Authorized to Recruit
KONA COMMUNITY HOSPITAL	MED-SURG ACUTE	56409	CERTIFIED NURSE AIDE ENTRY		7/3/2008	\$ 30,528.00	\$ 30,528.00	Authorized to Recruit
KONA COMMUNITY HOSPITAL	SKILLED NURSING CARE	56415	CERTIFIED NURSE AIDE FP		8/16/2008	\$ 32,364.00	\$0	Authorized to Recruit
KONA COMMUNITY HOSPITAL	ONCOLOGY	56416	HEALTH UNIT CLERK II		12/13/2008	\$ 27,756.00	\$ 36,516.00	Authorized to Recruit
KONA COMMUNITY HOSPITAL	DIETARY	56417	KITCHEN HELPER	Casual Hire	9/16/2008	\$ 32,856.00	\$16.80	Not Authorized to Recruit;to be abolished
KONA COMMUNITY HOSPITAL	MEDICAL RECORDS	56418	HEALTH INFO TECH II		9/16/2008	\$ 31,212.00	\$0	Authorized to Recruit
KONA COMMUNITY HOSPITAL	GENERAL ACCOUNTING	56424	ACCOUNT CLERK III		10/23/2008	\$ 28,836.00	\$0	Authorized to Recruit
KONA COMMUNITY HOSPITAL	GENERAL ACCOUNTING	56425	ACCOUNT CLERK III		10/23/2008	\$ 28,836.00	\$0	Authorized to Recruit
KONA COMMUNITY HOSPITAL	SKILLED NURSING CARE	56576	REGISTERED PROF NURSE III		10/30/2008	\$ 68,736.00	\$0	Authorized to Recruit
KONA COMMUNITY HOSPITAL	ADMITTING	56580	ADMITTING CLERK I		11/16/2008	\$ 27,756.00	\$0	Authorized to Recruit
KONA COMMUNITY HOSPITAL	ADMITTING	56581	ADMITTING CLERK I		11/16/2008	\$27,756.00	\$0	Authorized to Recruit
KONA COMMUNITY HOSPITAL	ADMITTING	56582	ADMITTING CLERK I		11/16/2008	\$ 27,756.00	\$0	Authorized to Recruit
KONA COMMUNITY HOSPITAL	HOSPITAL ADMINISTRATION	101605	REGIONAL CEO	Exempt	4/1/2008	\$ 230,000.00	\$ 218,000.00	Authorized to Recruit
KONA COMMUNITY HOSPITAL	GENERAL ACCOUNTING	105983	STUDENT HELPER I	Exempt	2/27/2007	\$ 7.25	\$ 7.25	Authorized to Recruit
KONA COMMUNITY HOSPITAL	HUMAN RESOURCES	108606	STUDENT HELPER II	Exempt	6/24/2007	\$ 7.50	\$ 7.50	Authorized to Recruit
KONA COMMUNITY HOSPITAL	NURSING ADMIN-ACUTE	108617	PER DIEM NURSE	Exempt	6/16/2008	\$ 36.62	\$ 33.53	Authorized to Recruit
KONA COMMUNITY HOSPITAL	NURSING ADMIN-ACUTE	108618	PER DIEM NURSE	Exempt	9/13/2008	\$ 36.62	\$ 33.53	Authorized to Recruit
KONA COMMUNITY HOSPITAL	NURSING ADMIN-ACUTE	108619	PER DIEM NURSE	Exempt	4/11/2008	\$ 36.62	\$ 33.53	Authorized to Recruit
KONA COMMUNITY HOSPITAL	OBSTETRICS ACUTE	108626	PER DIEM NURSE	Exempt	2/18/2008	\$ 36.62	\$ 33.53	Authorized to Recruit
KONA COMMUNITY HOSPITAL	NURSING ADMIN-ACUTE	108627	PER DIEM NURSE	Exempt	9/11/2007	\$ 36.62	\$ 35.21	Authorized to Recruit
KONA COMMUNITY HOSPITAL	NURSING ADMIN-ACUTE	108628	PER DIEM NURSE	Exempt	8/4/2008	\$ 36.62	\$ 36.62	Authorized to Recruit
KONA COMMUNITY HOSPITAL	OBSTETRICS ACUTE	108631	PER DIEM NURSE	Exempt	8/16/2008	\$ 36.62	\$ 36.62	Authorized to Recruit
KONA COMMUNITY HOSPITAL	NURSING ADMIN-ACUTE	108632	PER DIEM NURSE	Exempt	11/20/2008	\$ 36.62	\$ 36.62	Authorized to Recruit



HHSC VACANCIES  
DEC. 2008

Facility	Department	Position	Pos>Description	Exempt Position?	Vacancy Date	Amount Budgeted for this Position	Amount Actually Paid for this position when it was last filled	Authorized or Not Authorized to Recruit
KONA COMMUNITY HOSPITAL	NURSING ADMIN-ACUTE	108636	PER DIEM NURSE	Exempt	2/11/2008	\$ 36.62	\$ 33.53	Authorized to Recruit
KONA COMMUNITY HOSPITAL	HUMAN RESOURCES	108930	STUDENT HELPER II	Exempt	6/30/2007	\$ 7.50	\$ 7.50	Authorized to Recruit
KONA COMMUNITY HOSPITAL	NURSING ADMIN-ACUTE	109040	PER DIEM LPN	Exempt	6/29/2007	\$ 21.44	\$ 19.60	Authorized to Recruit
KONA COMMUNITY HOSPITAL	NURSING ADMIN-ACUTE	109043	PER DIEM CNA	Exempt	6/7/2008	\$ 18.35	\$ 17.65	Authorized to Recruit
KONA COMMUNITY HOSPITAL	NURSING ADMIN-ACUTE	109044	PER DIEM CNA	Exempt	9/15/2008	\$ 18.35	\$ 18.35	Authorized to Recruit
KONA COMMUNITY HOSPITAL	NURSING ADMIN-ACUTE	109045	PER DIEM LPN	Exempt	1/7/2007	\$ 21.44	\$ 19.12	Authorized to Recruit
KONA COMMUNITY HOSPITAL	NURSING ADMIN-ACUTE	109059	PER DIEM NURSE	Exempt	3/24/2008	\$ 36.62	\$ 35.21	Authorized to Recruit
KONA COMMUNITY HOSPITAL	MEDICAL-PHYSICIANS	109207	STAFF SURGEON	Exempt	5/12/2008	\$ 280,000.00	\$ 280,000.00	Not Authorized to Recruit
KONA COMMUNITY HOSPITAL	MEDICAL-PHYSICIANS	109279	ASST ADMR MEDICAL GRP PRAC DIR	Exempt	4/1/2008	\$ 0	\$ 120,000.00	Not Authorized to Recruit
KONA COMMUNITY HOSPITAL	NURSING ADMIN-ACUTE	109286	PER DIEM NURSE	Exempt	6/11/2008	\$ 36.62	\$ 36.62	Authorized to Recruit
KONA COMMUNITY HOSPITAL	QUALITY MANAGEMENT	109308	PER DIEM NURSE	Exempt	7/15/2008	\$ 36.62	\$ 36.62	Authorized to Recruit
KONA COMMUNITY HOSPITAL	NURSING ADMIN-ACUTE	109311	PER DIEM NURSE	Exempt	6/1/2008	\$ 36.62	\$ 23.37	Authorized to Recruit
KULA HOSPITAL	HOUSEKEEPING	19998	JANITOR II		12/1/2008	\$ 32,856.00	\$ 32,856.00	Authorized to Recruit
KULA HOSPITAL	HOUSEKEEPING	19980	JANITOR II		7/16/2008	\$ 32,856.00	\$ 31,596.00	Authorized to Recruit
KULA HOSPITAL	HOUSEKEEPING	19993	JANITOR II		12/1/2008	\$ 32,856.00	\$ 32,856.00	Authorized to Recruit
KULA HOSPITAL	DIETARY	19996	KITCHEN HELPER		7/1/2008	\$ 32,856.00	\$ 32,484.00	Authorized to Recruit
KULA HOSPITAL	DIETARY	20002	KITCHEN HELPER		11/13/2008	\$ 32,856.00	\$ 32,856.00	Authorized to Recruit
KULA HOSPITAL	OCCUPATIONAL THERAPY	20020	OCCUPATIONAL THERAPIST IV		8/16/2007	\$ 70,000.00	\$ 65,496.00	Authorized to Recruit
KULA HOSPITAL	SNF-ICF SWING	20061	CERTIFIED NURSE AIDE FP		12/1/2008	\$ 32,364.00	\$ 36,468.00	Authorized to Recruit
KULA HOSPITAL	SNF-ICF SWING	20090	CERTIFIED NURSE AIDE ENTRY		10/13/2007	\$ 32,364.00	\$ 34,560.00	Authorized to Recruit
KULA HOSPITAL	RADIOLOGY-DIAGNOSTIC	23651	RADIOLOGIC TECH FP		4/16/2008	\$ 25.50	\$ 25.50	Authorized to Recruit
KULA HOSPITAL	SNF-ICF SWING	26447	CERTIFIED NURSE AIDE FP		4/25/2008	\$ 32,856.00	\$ 35,412.00	Authorized to Recruit
KULA HOSPITAL	SNF-ICF SWING	47771	REGISTERED PROF NURSE III		5/28/2008	\$ 74,328.00	\$ 66,096.00	Authorized to Recruit
KULA HOSPITAL	SNF-ICF SWING	47772	REGISTERED PROF NURSE III		7/1/2008	\$ 74,328.00	\$ 73,236.00	Authorized to Recruit
KULA HOSPITAL	SNF-ICF SWING	53671	CERTIFIED NURSE AIDE FP		8/23/2008	\$ 32,364.00	\$ 36,168.00	Authorized to Recruit
KULA HOSPITAL	SNF-ICF SWING	53674	CERTIFIED NURSE AIDE ENTRY		12/14/2008	\$ 32,364.00	\$ 32,580.00	Authorized to Recruit
KULA HOSPITAL	SNF-ICF SWING	54032	REGISTERED PROF NURSE III		8/1/2007	\$ 74,328.00	\$ 75,072.00	Authorized to Recruit
KULA HOSPITAL	SNF-ICF SWING	54941	CERTIFIED NURSE AIDE ENTRY		8/1/2002	\$ 30,528.00	\$ 14.11	Authorized to Recruit
KULA HOSPITAL	SNF-ICF SWING	54942	CERTIFIED NURSE AIDE ENTRY		3/21/2008	\$ 30,528.00	\$ 29,568.00	Authorized to Recruit
KULA HOSPITAL	SNF-ICF SWING	55501	REGISTERED PROF NURSE III		11/16/2008	\$ 74,328.00	\$ 76,164.00	Authorized to Recruit
KULA HOSPITAL	SNF-ICF SWING	55873	REGISTERED PROF NURSE III		1/2/2008	\$ 74,328.00	\$ 71,472.00	Authorized to Recruit
KULA HOSPITAL	SNF-ICF SWING	56187	CERTIFIED NURSE AIDE ENTRY		3/1/2007	\$ 30,528.00	\$ 13.41	Authorized to Recruit
KULA HOSPITAL	CLINICAL LAB SVCS	56533	MEDICAL TECHNOLOGIST III		11/1/2008	\$ 28.86	\$ -	Authorized to Recruit
KULA HOSPITAL	SNF-ICF SWING	106308	STUDENT HELPER I	Exempt	12/20/2008	\$ 7.25	\$ 7.25	Authorized to Recruit
KULA HOSPITAL	SNF-ICF SWING	108585	STUDENT HELPER I	Exempt	5/15/2008	\$ 7.25	\$ 7.25	Authorized to Recruit
KULA HOSPITAL	SNF-ICF SWING	108960	PER DIEM CNA	Exempt	11/2/2007	\$ 18.35	\$ 17.45	Authorized to Recruit
KULA HOSPITAL	SNF-ICF SWING	109054	PER DIEM NURSE	Exempt	8/23/2008	\$ 37.17	\$ 36.62	Authorized to Recruit
LANAI COMMUNITY HOSP	INTERMEDIATE CARE	22642	CERTIFIED NURSE AIDE ENTRY		7/16/2002	\$ 32,364.00	\$ 13.41	Authorized to Recruit



HHSC VACANCIES  
DEC. 2008

Facility	Department	Position	PosDescription	Exempt Position?	Vacancy Date	Amount Budgeted for this position	Amount Actually Paid for this position when it was last filled	Authorized or Not Authorized to Recruit
LANAI COMMUNITY HOSP	CLINICAL LAB SVCS	23012	MEDICAL TECHNOLOGIST III		11/26/2007	\$ 60,024.00	\$ 51,552.00	Authorized to Recruit
LANAI COMMUNITY HOSP	MEDICAL ACUTE	23030	REGISTERED PROF NURSE III		11/21/2005	\$ 74,328.00	\$ 64,776.00	Authorized to Recruit
LANAI COMMUNITY HOSP	MEDICAL ACUTE	23644	CERTIFIED NURSE AIDE FP		7/2/2001	\$ 32,364.00	\$ 12.46	Authorized to Recruit
LANAI COMMUNITY HOSP	DIETARY	54829	KITCHEN HELPER		3/25/2002	\$ 32,856.00	\$ 15.80	Authorized to Recruit
MAUI MEM MEDICAL CENTER	TRANS IP-ACUTE-WAITLIST	19689	REGISTERED PROF NURSE V		4/1/2008	\$ 92,208.00	\$ 82,356.00	Authorized to Recruit
MAUI MEM MEDICAL CENTER	PSYCH ACUTE-ADULT	19686	REGISTERED PROF NURSE II		9/16/2008	\$ 74,328.00	\$ 76,164.00	Authorized to Recruit
MAUI MEM MEDICAL CENTER	TRANS IP-ACUTE-WAITLIST	19733	NURSE AIDE FP		11/27/2008	\$ 32,364.00	\$ 32,364.00	Authorized to Recruit
MAUI MEM MEDICAL CENTER	MEDICAL ACUTE	19750	NURSE AIDE FP		12/17/2008	\$ 32,364.00	\$ 32,364.00	Authorized to Recruit
MAUI MEM MEDICAL CENTER	CLINICAL LAB SVCS	19776	MEDICAL TECHNOLOGIST IV		12/31/2007	\$ 64,920.00	\$ 64,380.00	Authorized to Recruit
MAUI MEM MEDICAL CENTER	ANESTHESIOLOGY	19788	REGISTERED PROF NURSE III		7/21/2007	\$ 74,328.00	\$ 119,880.00	Authorized to Recruit
MAUI MEM MEDICAL CENTER	MEDICAL RECORDS	19791	HEALTH INFO ADMR		10/1/2007	\$ 66,984.00	\$ 77,172.00	Authorized to Recruit
MAUI MEM MEDICAL CENTER	PLANT MAINTENANCE	19879	BLDG MAINT WORKER II		7/6/2003	\$ 46,500.00	\$ 18.31	Authorized to Recruit
MAUI MEM MEDICAL CENTER	PLANT MAINTENANCE	19824	BLDG & GRDS UTILITY WORKER		5/31/2008	\$ 36,540.00	\$ 31,596.00	Authorized to Recruit
MAUI MEM MEDICAL CENTER	HOUSEKEEPING	19828	JANITOR II		5/3/2008	\$ 32,856.00	\$ 31,596.00	Authorized to Recruit
MAUI MEM MEDICAL CENTER	HOUSEKEEPING	19835	JANITOR II		4/16/2008	\$ 32,856.00	\$ 31,596.00	Authorized to Recruit
MAUI MEM MEDICAL CENTER	GENERAL ACCOUNTING	19847	ACCOUNTANT V		11/2/2008	\$ 62,424.00	\$ 60,024.00	Authorized to Recruit
MAUI MEM MEDICAL CENTER	ADMITTING	19849	ADMITTING CLERK I		11/2/2008	\$ 27,756.00	\$ 30,012.00	Authorized to Recruit
MAUI MEM MEDICAL CENTER	PURCHASING & STORES	21574	PROCUREMENT & SUPPLY SPCLT III		7/25/2008	\$ 49,332.00	\$ 55,488.00	Authorized to Recruit
MAUI MEM MEDICAL CENTER	OBSTETRICS ACUTE	21637	HEALTH UNIT CLERK II		1/20/2008	\$ 27,756.00	\$ 32,460.00	Authorized to Recruit
MAUI MEM MEDICAL CENTER	CLINICAL LAB SVCS	22421	MEDICAL TECHNOLOGIST IV		12/31/2007	\$ 64,920.00	\$ 65,388.00	Authorized to Recruit
MAUI MEM MEDICAL CENTER	ADMITTING	22663	ADMITTING CLERK I		9/19/2007	\$ 27,756.00	\$ 26,688.00	Authorized to Recruit
MAUI MEM MEDICAL CENTER	PLANT MAINTENANCE	22827	AIR CONDITIONING MECHANIC I		5/1/2007	\$ 45,492.00	\$ 41,364.00	Authorized to Recruit
MAUI MEM MEDICAL CENTER	DIETARY	22829	KITCHEN HELPER		12/17/2007	\$ 32,856.00	\$ 31,236.00	Authorized to Recruit
MAUI MEM MEDICAL CENTER	MED-SURG INTENSIVE CARE	22900	REGISTERED PROF NURSE IV		4/2/2007	\$ 81,972.00	\$ 73,596.00	Authorized to Recruit
MAUI MEM MEDICAL CENTER	PSYCH ACUTE-ADULT	26887	LICENSED PRACTICAL NURSE FP		12/31/2003	\$ 38,256.00	\$ 35,580.00	Authorized to Recruit
MAUI MEM MEDICAL CENTER	OBSTETRICS ACUTE	29030	REGISTERED PROF NURSE III		11/1/2007	\$ 74,328.00	\$ 71,472.00	Authorized to Recruit
MAUI MEM MEDICAL CENTER	RADIOLOGY-DIAGNOSTIC	29050	RADIOLOGY SUPVR		7/1/2008	\$ 81,216.00	\$ 81,216.00	Authorized to Recruit
MAUI MEM MEDICAL CENTER	CLINICAL LAB SVCS	30846	MEDICAL TECHNOLOGIST III		7/16/2007	\$ 51,792.00	\$ 56,796.00	Authorized to Recruit
MAUI MEM MEDICAL CENTER	DRUGS SOLD TO PATIENTS	32071	PHARMACIST I		2/14/2008	\$ 103,992.00	\$ 103,992.00	Authorized to Recruit
MAUI MEM MEDICAL CENTER	SURGERY GEN-MAJOR	32103	CLERK IV		11/15/2008	\$ 27,756.00	\$ 27,756.00	Authorized to Recruit
MAUI MEM MEDICAL CENTER	PURCHASING & STORES	34092	PURCHASING TECHNICIAN I		7/19/2007	\$ 28,836.00	\$ 44,424.00	Authorized to Recruit
MAUI MEM MEDICAL CENTER	SURGERY GEN-MAJOR	34230	SURGICAL TECHNICIAN FP		7/21/2006	\$ 42,912.00	\$ 37,188.00	Authorized to Recruit
MAUI MEM MEDICAL CENTER	CLINICAL LAB SVCS	35302	MEDICAL TECHNOLOGIST III		4/1/2008	\$ 51,792.00	\$ 60,816.00	Authorized to Recruit
MAUI MEM MEDICAL CENTER	NURSING FLOAT PERSONNEL	36202	REGISTERED PROF NURSE III		8/7/2008	\$ 74,328.00	\$ 78,072.00	Authorized to Recruit
MAUI MEM MEDICAL CENTER	DIETARY	37878	CLERK III		8/30/2008	\$ 25,668.00	\$ 32,424.00	Authorized to Recruit
MAUI MEM MEDICAL CENTER	SECURITY	38074	SECURITY OFFICER I		2/1/2008	\$ 31,212.00	\$ 31,176.00	Authorized to Recruit
MAUI MEM MEDICAL CENTER	PATIENT ACCOUNTING	38746	CREDIT & COLLECTION CLERK		5/20/2008	\$ 31,212.00	\$ 33,720.00	Authorized to Recruit
MAUI MEM MEDICAL CENTER	OCCUPATIONAL THERAPY	39989	OCCUPATIONAL THERAPIST V		10/4/2008	\$ 75,000.00	\$ 74,256.00	Authorized to Recruit

HHSC VACANCIES  
DEC. 2008

Facility	Department	Position	PosDescription	Exempt Position?	Vacancy Date	Amount Budgeted for this Position	Amount Actually Paid for this position when it was last filled	Authorized or Not Authorized to Recruit
MAUI MEM MEDICAL CENTER	EMERGENCY SERVICES	41526	REGISTERED PROF NURSE III		12/9/2008	\$ 74,328.00	\$ 78,072.00	Authorized to Recruit
MAUI MEM MEDICAL CENTER	NURSING FLOAT PERSONNEL	44513	REGISTERED PROF NURSE III		7/28/2007	\$ 74,328.00	\$ 68,064.00	Authorized to Recruit
MAUI MEM MEDICAL CENTER	DATA PROCESSING	44913	DATA PROC SYSTEMS ANALYST IV		5/1/2008	\$ 49,332.00	\$ 51,300.00	Authorized to Recruit
MAUI MEM MEDICAL CENTER	DATA PROCESSING	44914	DATA PROC SYSTEMS ANALYST IV		5/1/2008	\$ 49,332.00	\$ 51,300.00	Authorized to Recruit
MAUI MEM MEDICAL CENTER	MEDICAL RECORDS	45836	MEDICAL TRANSCRIPTIONIST		5/4/2008	\$ 30,036.00	\$ 28,884.00	Authorized to Recruit
MAUI MEM MEDICAL CENTER	PSYCH ACUTE-ADOLEST CHILD	46505	REGISTERED PROF NURSE III		11/25/2007	\$ 74,328.00	\$ 66,096.00	Authorized to Recruit
MAUI MEM MEDICAL CENTER	PSYCH ACUTE-ADULT	46506	REGISTERED PROF NURSE III		11/19/2007	\$ 74,328.00	\$ 34,440.00	Authorized to Recruit
MAUI MEM MEDICAL CENTER	PSYCHIATRIC AIDE FP	50636	PSYCHIATRIC AIDE FP		11/9/2007	\$ 34,440.00	\$ 32,736.00	Authorized to Recruit
MAUI MEM MEDICAL CENTER	MED-SURG ACUTE	51500	NURSE AIDE FP		10/9/2008	\$ 32,364.00	\$ 32,364.00	Authorized to Recruit
MAUI MEM MEDICAL CENTER	ADMITTING	53492	ADMITTING CLERK I		11/4/1998	\$ 27,756.00	\$ 12.33	Authorized to Recruit
MAUI MEM MEDICAL CENTER	MEDICAL RECORDS	53611	MEDICAL TRANSCRIPTIONIST		4/30/2004	\$ 30,036.00	\$ 13.89	Authorized to Recruit
MAUI MEM MEDICAL CENTER	SURGERY GEN-MAJOR	53717	TRANSPORTER		12/5/2008	\$ 30,528.00	\$ 30,528.00	Authorized to Recruit
MAUI MEM MEDICAL CENTER	DIALYSIS	53838	REGISTERED PROF NURSE IV		8/13/2007	\$ 85,248.00	\$ 77,280.00	Authorized to Recruit
MAUI MEM MEDICAL CENTER	MED-SURG INTENSIVE CARE	53858	NURSE AIDE FP		9/13/2008	\$ 32,364.00	\$ 32,364.00	Authorized to Recruit
MAUI MEM MEDICAL CENTER	PSYCH ACUTE-ADULT	53920	REGISTERED PROF NURSE III		2/19/2008	\$ 74,328.00	\$ 71,472.00	Authorized to Recruit
MAUI MEM MEDICAL CENTER	DRUGS SOLD TO PATIENTS	53957	PHARMACIST I		1/9/2008	\$ 103,992.00	\$ 103,992.00	Authorized to Recruit
MAUI MEM MEDICAL CENTER	PATIENT ACCOUNTING	54023	CREDIT & COLLECTION CLERK		8/1/2008	\$ 31,212.00	\$ 36,516.00	Authorized to Recruit
MAUI MEM MEDICAL CENTER	PATIENT ACCOUNTING	54024	CREDIT & COLLECTION CLERK		7/10/2008	\$ 31,212.00	\$ 33,720.00	Authorized to Recruit
MAUI MEM MEDICAL CENTER	DATA PROCESSING	54109	DATA PROC SYSTEMS ANALYST V		4/16/2008	\$ 55,500.00	\$ 66,660.00	Authorized to Recruit
MAUI MEM MEDICAL CENTER	PSYCH ACUTE-ADULT	54122	HEALTH UNIT CLERK I		12/3/2007	\$ 25,668.00	\$ 27,732.00	Authorized to Recruit
MAUI MEM MEDICAL CENTER	DIETARY	54128	KITCHEN HELPER		12/17/2007	\$ 32,856.00	\$ 31,236.00	Authorized to Recruit
MAUI MEM MEDICAL CENTER	NURSING FLOAT PERSONNEL	54324	HEALTH UNIT CLERK I		12/15/2003	\$ 25,668.00	\$ 12.34	Authorized to Recruit
MAUI MEM MEDICAL CENTER	COMPUTED TOMOGRAPHIC SCAN	54453	RADIOLOGY SPCLST II		11/14/2007	\$ 61,380.00	\$ 63,924.00	Authorized to Recruit
MAUI MEM MEDICAL CENTER	RADIOLOGY-DIAGNOSTIC	54513	CLERK III		3/4/2008	\$ 25,668.00	\$ 24,684.00	Authorized to Recruit
MAUI MEM MEDICAL CENTER	RADIOLOGY-DIAGNOSTIC	54514	CLERK III		2/25/2007	\$ 25,668.00	\$ 23,736.00	Authorized to Recruit
MAUI MEM MEDICAL CENTER	PLANT MAINTENANCE	54596	BLDG MAINT WORKER I		4/3/2008	\$ 43,824.00	\$ 42,144.00	Authorized to Recruit
MAUI MEM MEDICAL CENTER	HOUSEKEEPING	54732	JANITOR II		10/7/2008	\$ 32,856.00	\$ 32,856.00	Authorized to Recruit
MAUI MEM MEDICAL CENTER	EMERGENCY SERVICES	54819	REGISTERED PROF NURSE III		9/4/2008	\$ 74,328.00	\$ 68,736.00	Authorized to Recruit
MAUI MEM MEDICAL CENTER	OBSTETRICS ACUTE	54840	REGISTERED PROF NURSE III		9/16/2007	\$ 74,328.00	\$ 71,472.00	Authorized to Recruit
MAUI MEM MEDICAL CENTER	OTHER MED-SURG ACUTE	54880	REGISTERED PROF NURSE II		12/18/2008	\$ 74,328.00	\$ 57,828.00	Authorized to Recruit
MAUI MEM MEDICAL CENTER	BIOMED	54923	BIOMED ENG TECH I		10/3/2005	\$ 47,148.00	\$ -	Authorized to Recruit
MAUI MEM MEDICAL CENTER	ANGIOCARDIOGRAPHY	55057	REGISTERED PROF NURSE III		8/30/2008	\$ 74,328.00	\$ 68,736.00	Authorized to Recruit
MAUI MEM MEDICAL CENTER	NURSING FLOAT PERSONNEL	55114	REGISTERED PROF NURSE III		10/22/2008	\$ 74,328.00	\$ 74,328.00	Authorized to Recruit
MAUI MEM MEDICAL CENTER	PATIENT ACCOUNTING	55137	CREDIT & COLLECTION CLERK		11/29/2008	\$ 31,212.00	\$ 31,212.00	Authorized to Recruit
MAUI MEM MEDICAL CENTER	PSYCH ACUTE-ADOLEST CHILD	55181	NURSE AIDE ENTRY		10/16/2008	\$ 32,364.00	\$ 30,528.00	Authorized to Recruit
MAUI MEM MEDICAL CENTER	NURSING FLOAT PERSONNEL	55186	NURSE AIDE FP		9/20/2008	\$ 32,364.00	\$ 32,364.00	Authorized to Recruit
MAUI MEM MEDICAL CENTER	OTHER MED-SURG ACUTE	55190	NURSE AIDE FP		6/24/2008	\$ 32,364.00	\$ 31,116.00	Authorized to Recruit
MAUI MEM MEDICAL CENTER	SURGERY GEN-MAJOR	55203	REGISTERED PROF NURSE III		9/2/2008	\$ 74,328.00	\$ 53,052.00	Authorized to Recruit

HHSC VACANCIES  
DEC. 2008

Facility	Department	Position	PosDescription	Exempt Position?	Vacancy Date	Amount Budgeted for this Position	Amount Actually Paid for this position when it was last filled	Authorized or Not Authorized to Recruit
MAUI MEM MEDICAL CENTER	TRANS IP-ACUTE-WAITLIST	55204	REGISTERED PROF NURSE III		9/2/2008	\$ 74,328.00	\$ 53,052.00	Authorized to Recruit
MAUI MEM MEDICAL CENTER	TRANS IP-ACUTE-WAITLIST	55206	REGISTERED PROF NURSE III		9/3/2008	\$ 74,328.00	\$ 53,052.00	Authorized to Recruit
MAUI MEM MEDICAL CENTER	NURSING FLOAT PERSONNEL	55233	NURSE AIDE FP		9/15/2008	\$ 32,364.00	\$ 32,364.00	Authorized to Recruit
MAUI MEM MEDICAL CENTER	PATIENT ACCOUNTING	55253	HOSPITAL BILLG & COLL SUPVR		8/26/2005	\$ 36,516.00	\$ 30,276.00	Authorized to Recruit
MAUI MEM MEDICAL CENTER	NURSING ADMIN-ACUTE	55270	REGISTERED PROF NURSE VI		8/23/2007	\$ 91,296.00	\$ 87,780.00	Authorized to Recruit
MAUI MEM MEDICAL CENTER	SURGERY GEN-MAJOR	55280	OPERATING ROOM AIDE ENTRY		10/27/2008	\$ 32,364.00	\$ 30,528.00	Authorized to Recruit
MAUI MEM MEDICAL CENTER	NURSING FLOAT PERSONNEL	55359	TRANSPORTER		5/5/2008	\$ 30,528.00	\$ 29,352.00	Authorized to Recruit
MAUI MEM MEDICAL CENTER	ADMITTING	55389	ADMITTING CLERK I		1/1/2005	\$ 27,756.00	\$ 13.34	Authorized to Recruit
MAUI MEM MEDICAL CENTER	ADMITTING	55394	ADMITTING CLERK II		3/16/2005	\$ 30,036.00	\$ -	Authorized to Recruit
MAUI MEM MEDICAL CENTER	RADIOLOGY-DIAGNOSTIC	55416	RADIOLOGIC TECH FP		7/2/2008	\$ 53,040.00	\$ 54,504.00	Authorized to Recruit
MAUI MEM MEDICAL CENTER	PURCHASING & STORES	55434	PROCUREMENT & SUPPLY SPCLT I		7/1/2005	\$ 36,024.00	\$ 26.68	Authorized to Recruit
MAUI MEM MEDICAL CENTER	RADIOLOGY-DIAGNOSTIC	55438	RADIOLOGIC TECH FP		7/1/2005	\$ 25.50	\$ 25.50	Authorized to Recruit
MAUI MEM MEDICAL CENTER	CHEMOTHERAPY	55463	HEALTH UNIT CLERK II		8/3/2006	\$ 27,756.00	\$ 24,792.00	Authorized to Recruit
MAUI MEM MEDICAL CENTER	MEDICAL RECORDS	55481	HEALTH INFO TECH I		9/1/2005	\$ 28,836.00	\$ 13.86	Authorized to Recruit
MAUI MEM MEDICAL CENTER	MEDICAL RECORDS	55488	CLERK III		9/16/2005	\$ 25,668.00	\$ 11.87	Authorized to Recruit
MAUI MEM MEDICAL CENTER	HOSPITAL ADMINISTRATION	55496	HOSP ENVIR/SAFETY OFCR V		10/1/2005	\$ 75,960.00	\$ -	Authorized to Recruit
MAUI MEM MEDICAL CENTER	CHEMOTHERAPY	55565	REGISTERED PROF NURSE III		12/3/2007	\$ 74,328.00	\$ 71,472.00	Authorized to Recruit
MAUI MEM MEDICAL CENTER	PSYCH ACUTE-ADOLEST CHILD	55560	PSYCHIATRIC AIDE FP		8/1/2008	\$ 34,440.00	\$ 34,440.00	Authorized to Recruit
MAUI MEM MEDICAL CENTER	RADIOLOGY-DIAGNOSTIC	55577	RADIOLOGIC TECH ENTRY		6/3/2008	\$ 53,040.00	\$ 53,040.00	Authorized to Recruit
MAUI MEM MEDICAL CENTER	PHYSICAL THERAPY	55582	PHYSICAL THERAPIST III		12/1/2005	\$ 35.00	\$ 35.00	Authorized to Recruit
MAUI MEM MEDICAL CENTER	PHYSICAL THERAPY	55583	PHYSICAL THERAPIST III		12/1/2005	\$ 35.00	\$ 35.00	Authorized to Recruit
MAUI MEM MEDICAL CENTER	PHYSICAL THERAPY	55585	PHYSICAL THERAPIST III		12/1/2005	\$ 35.00	\$ 35.00	Authorized to Recruit
MAUI MEM MEDICAL CENTER	PURCHASING & STORES	55597	CONTRACTS MANAGER I		8/9/2007	\$ 51,312.00	\$ 62,424.00	Authorized to Recruit
MAUI MEM MEDICAL CENTER	HOSPITAL ADMINISTRATION	55599	REG COMPL & PRIVACY OFFCR		12/16/2005	\$ 51,312.00	\$ -	Authorized to Recruit
MAUI MEM MEDICAL CENTER	MEDICAL RECORDS	55623	CLERK IV		12/15/2008	\$ 27,756.00	\$ 28,836.00	Authorized to Recruit
MAUI MEM MEDICAL CENTER	NURSING FLOAT PERSONNEL	55625	REGISTERED PROF NURSE III		4/27/2008	\$ 74,328.00	\$ 71,472.00	Authorized to Recruit
MAUI MEM MEDICAL CENTER	NURSING FLOAT PERSONNEL	55627	REGISTERED PROF NURSE III		8/23/2007	\$ 74,328.00	\$ 71,472.00	Authorized to Recruit
MAUI MEM MEDICAL CENTER	NURSING FLOAT PERSONNEL	55628	REGISTERED PROF NURSE III		11/10/2008	\$ 74,328.00	\$ 76,164.00	Authorized to Recruit
MAUI MEM MEDICAL CENTER	NURSING FLOAT PERSONNEL	55629	REGISTERED PROF NURSE III		2/2/2007	\$ 74,328.00	\$ 61,716.00	Authorized to Recruit
MAUI MEM MEDICAL CENTER	INSERVICE EDUC-NURSING	55630	REGISTERED PROF NURSE III		11/15/2007	\$ 74,328.00	\$ 71,472.00	Authorized to Recruit
MAUI MEM MEDICAL CENTER	NURSING FLOAT PERSONNEL	55631	REGISTERED PROF NURSE III		1/8/2008	\$ 74,328.00	\$ 66,096.00	Authorized to Recruit
MAUI MEM MEDICAL CENTER	OCCUPATIONAL THERAPY	55673	OCCUPATIONAL THERAPIST III		2/16/2006	\$ 35.00	\$ 35.00	Authorized to Recruit
MAUI MEM MEDICAL CENTER	HOSPITAL ADMINISTRATION	55697	MANAGEMENT ANALYST V		11/10/2008	\$ 51,312.00	\$ 70,224.00	Authorized to Recruit
MAUI MEM MEDICAL CENTER	SURGERY GEN-MAJOR	55727	SURGICAL TECHNICIAN FP		5/4/2006	\$ 20.63	\$ -	Authorized to Recruit
MAUI MEM MEDICAL CENTER	DIETARY	55731	CASHIER CLERK		5/16/2006	\$ 25,668.00	\$ -	Authorized to Recruit
MAUI MEM MEDICAL CENTER	DIETARY	55732	CASHIER CLERK		5/16/2006	\$ 25,668.00	\$ -	Authorized to Recruit
MAUI MEM MEDICAL CENTER	DIETARY	55733	CASHIER CLERK		5/16/2006	\$ 25,668.00	\$ -	Authorized to Recruit
MAUI MEM MEDICAL CENTER	DIETARY	55734	CASHIER CLERK		5/16/2006	\$ 25,668.00	\$ -	Authorized to Recruit

HHSC VACANCIES  
DEC. 2008

Facility	Department	Position	PosDescription	Exempt Position?	Vacancy Date	Amount Budgeted for this Position	Amount Actually Paid for this position when it was last filled	Authorized or Not Authorized to Recruit
MAUI MEM MEDICAL CENTER	SURGERY GEN-MAJOR	55735	SURGICAL TECHNICIAN FP		10/11/2008	\$ 49,912.00	\$ 40,392.00	Authorized to Recruit
MAUI MEM MEDICAL CENTER	DIETARY	55737	INSTITUTION FOOD SVCS MGR III		5/16/2006	\$ 49,044.00	\$ -	Authorized to Recruit
MAUI MEM MEDICAL CENTER	MAGNETIC RESONANCE IMAGING	55774	RADIOLOGY SPCLST II		7/1/2006	\$ 31.86	\$ 32.25	Authorized to Recruit
MAUI MEM MEDICAL CENTER	MAGNETIC RESONANCE IMAGING	55775	RADIOLOGY SPCLST II		7/1/2006	\$ 31.86	\$ 32.25	Authorized to Recruit
MAUI MEM MEDICAL CENTER	ULTRASONOGRAPHY	55777	RADIOLOGY SPCLST II		8/30/2008	\$ 71,496.00	\$ 73,200.00	Authorized to Recruit
MAUI MEM MEDICAL CENTER	ULTRASONOGRAPHY	55780	RADIOLOGY SPCLST II		7/1/2006	\$ 34.37	\$ 34.37	Authorized to Recruit
MAUI MEM MEDICAL CENTER	ECHOCARDIOLOGY	55783	RADIOLOGY SPCLST II		7/11/2008	\$ 67,596.00	\$ 76,068.00	Authorized to Recruit
MAUI MEM MEDICAL CENTER	TRANS IP-ACUTE-WAITLIST	55823	TELEMETRY TECHNICIAN FP		7/1/2006	\$ 36,828.00	\$ -	Authorized to Recruit
MAUI MEM MEDICAL CENTER	TRANS IP-ACUTE-WAITLIST	55824	TELEMETRY TECHNICIAN FP		7/1/2006	\$ 36,828.00	\$ -	Authorized to Recruit
MAUI MEM MEDICAL CENTER	TRANS IP-ACUTE-WAITLIST	55825	TELEMETRY TECHNICIAN FP		7/1/2006	\$ 36,828.00	\$ -	Authorized to Recruit
MAUI MEM MEDICAL CENTER	CHEMOTHERAPY	55852	TUMOR REGISTRAR SPCLST III		5/31/2008	\$ 42,132.00	\$ 26,688.00	Authorized to Recruit
MAUI MEM MEDICAL CENTER	PHYSICAL THERAPY	55871	PHYSICAL THERAPIST III		7/16/2006	\$ 35.00	\$ 35.00	Authorized to Recruit
MAUI MEM MEDICAL CENTER	PHYSICAL THERAPY	55872	PHYSICAL THERAPIST III		7/16/2006	\$ 35.00	\$ 35.00	Authorized to Recruit
MAUI MEM MEDICAL CENTER	MED-SURG ACUTE	55877	REGISTERED PROF NURSE III		8/20/2008	\$ 74,328.00	\$ 68,736.00	Authorized to Recruit
MAUI MEM MEDICAL CENTER	SOCIAL WORK SVCS	55899	SOCIAL WORKER IV		11/15/2008	\$ 53,724.00	\$ 57,156.00	Authorized to Recruit
MAUI MEM MEDICAL CENTER	DIETARY	55907	DIETARY AIDE		9/1/2006	\$ 33,780.00	\$ -	Authorized to Recruit
MAUI MEM MEDICAL CENTER	HOUSEKEEPING	55915	JANITOR II		7/22/2008	\$ 32,856.00	\$ 32,856.00	Authorized to Recruit
MAUI MEM MEDICAL CENTER	HOUSEKEEPING	55916	JANITOR II		6/21/2008	\$ 32,856.00	\$ 31,596.00	Authorized to Recruit
MAUI MEM MEDICAL CENTER	HOUSEKEEPING	55919	JANITOR III		10/15/2007	\$ 34,968.00	\$ 33,072.00	Authorized to Recruit
MAUI MEM MEDICAL CENTER	HOUSEKEEPING	55920	JANITOR III		3/1/2008	\$ 34,968.00	\$ 33,072.00	Authorized to Recruit
MAUI MEM MEDICAL CENTER	PHYSICAL THERAPY	55966	PHYSICAL THERAPIST ASST FP		12/16/2006	\$ 21.05	\$ 21.05	Authorized to Recruit
MAUI MEM MEDICAL CENTER	OCCUPATIONAL THERAPY	56014	OCCUPATIONAL THERAPIST III		1/16/2007	\$ 35.00	\$ 35.00	Authorized to Recruit
MAUI MEM MEDICAL CENTER	HOSPITAL ADMINISTRATION	56017	MANAGEMENT ANALYST III		1/16/2007	\$ 42,132.00	\$ -	Authorized to Recruit
MAUI MEM MEDICAL CENTER	HOSPITAL ADMINISTRATION	56018	MANAGEMENT ANALYST III		1/16/2007	\$ 45,576.00	\$ -	Authorized to Recruit
MAUI MEM MEDICAL CENTER	PLANT MAINTENANCE	56052	PLUMBER I		2/1/2007	\$ 45,492.00	\$ -	Authorized to Recruit
MAUI MEM MEDICAL CENTER	PLANT MAINTENANCE	56053	AIR CONDITIONING MECHANIC II		2/1/2007	\$ 48,168.00	\$ -	Authorized to Recruit
MAUI MEM MEDICAL CENTER	PLANT MAINTENANCE	56055	CLERK III		2/1/2007	\$ 25,668.00	\$ -	Authorized to Recruit
MAUI MEM MEDICAL CENTER	PLANT MAINTENANCE	56057	HOSP ENVIR/SAFETY OFCR III		2/1/2007	\$ 55,500.00	\$ -	Authorized to Recruit
MAUI MEM MEDICAL CENTER	DRUGS SOLD TO PATIENTS	56186	PHARMACIST I		3/1/2007	\$ 103,992.00	\$ -	Authorized to Recruit
MAUI MEM MEDICAL CENTER	EMERGENCY SERVICES	56234	REGISTERED PROF NURSE III		12/17/2008	\$ 74,328.00	\$ 71,472.00	Authorized to Recruit
MAUI MEM MEDICAL CENTER	OBSTETRICS ACUTE	56249	REGISTERED PROF NURSE III		5/22/2008	\$ 74,328.00	\$ 71,472.00	Authorized to Recruit
MAUI MEM MEDICAL CENTER	OBSTETRICS ACUTE	56250	REGISTERED PROF NURSE II		9/4/2007	\$ 74,328.00	\$ -	Authorized to Recruit
MAUI MEM MEDICAL CENTER	RESPIRATORY THERAPY	56260	RESPIRATORY THERAPY TECH FP		7/11/2007	\$ 26.05	\$ 26.05	Authorized to Recruit
MAUI MEM MEDICAL CENTER	MED-SURG ACUTE	56266	REGISTERED PROF NURSE III		8/1/2007	\$ 74,328.00	\$ -	Authorized to Recruit
MAUI MEM MEDICAL CENTER	PLANT MAINTENANCE	56271	VAN DRIVER		7/8/2008	\$ 36,540.00	\$ 35,136.00	Authorized to Recruit
MAUI MEM MEDICAL CENTER	MEDICAL RECORDS	56274	MEDICAL TRANSCRIPTIONIST		12/1/2007	\$ 14.44	\$ -	Authorized to Recruit
MAUI MEM MEDICAL CENTER	MEDICAL RECORDS	56275	MEDICAL TRANSCRIPTIONIST		12/1/2007	\$ 14.44	\$ -	Authorized to Recruit
MAUI MEM MEDICAL CENTER	NURSING ADMIN-ACUTE	56353	REGISTERED PROF NURSE IV		12/16/2007	\$ 81,972.00	\$ -	Authorized to Recruit

HHSC VACANCIES  
DEC. 2008

Facility	Department	Position	PosDescription	Exempt Position?	Vacancy Date	Amount Budgeted for this Position	Amount Actually Paid for this position when it was last filled	Authorized or Not Authorized to Recruit
MAUI MEM MEDICAL CENTER	SURGICAL ACUTE	56354	LICENSED PRACTICAL NURSE ENTRY		9/4/2008	\$ 38,256.00	\$ 36,732.00	Authorized to Recruit
MAUI MEM MEDICAL CENTER	SURGICAL ACUTE	56355	LICENSED PRACTICAL NURSE FP		9/3/2008	\$ 38,256.00	\$ 39,672.00	Authorized to Recruit
MAUI MEM MEDICAL CENTER	SURGICAL ACUTE	56356	NURSE AIDE FP		8/4/2008	\$ 32,364.00	\$ 32,364.00	Authorized to Recruit
MAUI MEM MEDICAL CENTER	SURGICAL ACUTE	56357	NURSE AIDE FP		9/3/2008	\$ 32,364.00	\$ 32,364.00	Authorized to Recruit
MAUI MEM MEDICAL CENTER	SURGICAL ACUTE	56358	NURSE AIDE FP		8/6/2008	\$ 32,364.00	\$ 32,364.00	Authorized to Recruit
MAUI MEM MEDICAL CENTER	SURGICAL ACUTE	56359	REGISTERED PROF NURSE III		9/5/2008	\$ 74,328.00	\$ 76,164.00	Authorized to Recruit
MAUI MEM MEDICAL CENTER	SURGICAL ACUTE	56360	REGISTERED PROF NURSE III		9/3/2008	\$ 74,328.00	\$ 71,484.00	Authorized to Recruit
MAUI MEM MEDICAL CENTER	SURGICAL ACUTE	56362	REGISTERED PROF NURSE III		9/1/2008	\$ 74,328.00	\$ 74,328.00	Authorized to Recruit
MAUI MEM MEDICAL CENTER	SURGICAL ACUTE	56363	REGISTERED PROF NURSE III		9/4/2008	\$ 74,328.00	\$ 74,328.00	Authorized to Recruit
MAUI MEM MEDICAL CENTER	SURGICAL ACUTE	56364	REGISTERED PROF NURSE III		9/2/2008	\$ 74,328.00	\$ 74,328.00	Authorized to Recruit
MAUI MEM MEDICAL CENTER	SURGICAL ACUTE	56365	REGISTERED PROF NURSE II		9/3/2008	\$ 74,328.00	\$ 57,828.00	Authorized to Recruit
MAUI MEM MEDICAL CENTER	SURGICAL ACUTE	56366	REGISTERED PROF NURSE III		9/2/2008	\$ 74,328.00	\$ 74,328.00	Authorized to Recruit
MAUI MEM MEDICAL CENTER	SURGICAL ACUTE	56367	REGISTERED PROF NURSE III		9/4/2008	\$ 74,328.00	\$ 76,164.00	Authorized to Recruit
MAUI MEM MEDICAL CENTER	SURGICAL ACUTE	56368	REGISTERED PROF NURSE II		9/19/2008	\$ 74,328.00	\$ 57,828.00	Authorized to Recruit
MAUI MEM MEDICAL CENTER	SURGICAL ACUTE	56369	HEALTH UNIT CLERK I		9/5/2008	\$ 27,756.00	\$ 25,668.00	Authorized to Recruit
MAUI MEM MEDICAL CENTER	SURGICAL ACUTE	56371	HEALTH UNIT CLERK II		8/31/2008	\$ 27,756.00	\$ 30,036.00	Authorized to Recruit
MAUI MEM MEDICAL CENTER	DRUGS SOLD TO PATIENTS	56372	PHARMACIST I		12/16/2007	\$ 50.00	\$ -	Authorized to Recruit
MAUI MEM MEDICAL CENTER	DRUGS SOLD TO PATIENTS	56373	PHARMACIST I		12/16/2007	\$ 50.00	\$ -	Authorized to Recruit
MAUI MEM MEDICAL CENTER	OCCUPATIONAL THERAPY	56376	OCCUPATIONAL THERAPIST III		2/1/2008	\$ 35.00	\$ 35.00	Authorized to Recruit
MAUI MEM MEDICAL CENTER	OCCUPATIONAL THERAPY	56387	REGISTERED PROF NURSE III		9/4/2008	\$ 74,328.00	\$ 74,328.00	Authorized to Recruit
MAUI MEM MEDICAL CENTER	MED-SURG INTENSIVE CARE	56390	REGISTERED PROF NURSE II		9/22/2008	\$ 74,328.00	\$ 57,828.00	Authorized to Recruit
MAUI MEM MEDICAL CENTER	SURGICAL ACUTE	56391	NURSE AIDE FP		9/20/2008	\$ 32,364.00	\$ 32,364.00	Authorized to Recruit
MAUI MEM MEDICAL CENTER	EMERGENCY SERVICES	56529	EMERGENCY ROOM ASST FP		10/1/2008	\$ 36,828.00	\$ -	Authorized to Recruit
MAUI MEM MEDICAL CENTER	EMERGENCY SERVICES	56530	EMERGENCY ROOM ASST FP		10/1/2008	\$ 36,828.00	\$ -	Authorized to Recruit
MAUI MEM MEDICAL CENTER	OCCUPATIONAL THERAPY	56531	OCCUPATIONAL THERAPIST III		10/16/2008	\$ 54,792.00	\$ -	Authorized to Recruit
MAUI MEM MEDICAL CENTER	OCCUPATIONAL THERAPY	56532	SPEECH PATHOLOGIST IV		10/16/2008	\$ 64,920.00	\$ -	Authorized to Recruit
MAUI MEM MEDICAL CENTER	SURGERY GEN-MAJOR	56535	REGISTERED PROF NURSE V		11/17/2008	\$ 98,292.00	\$ -	Authorized to Recruit
MAUI MEM MEDICAL CENTER	SURGERY GEN-MAJOR	56536	REGISTERED PROF NURSE III		11/17/2008	\$ 74,328.00	\$ -	Authorized to Recruit
MAUI MEM MEDICAL CENTER	SURGERY GEN-MAJOR	56537	REGISTERED PROF NURSE III		11/17/2008	\$ 74,328.00	\$ -	Authorized to Recruit
MAUI MEM MEDICAL CENTER	SURGERY GEN-MAJOR	56538	REGISTERED PROF NURSE III		11/17/2008	\$ 74,328.00	\$ -	Authorized to Recruit
MAUI MEM MEDICAL CENTER	PATIENT ACCOUNTING	56539	CLERK IV		12/1/2008	\$ 27,756.00	\$ -	Authorized to Recruit
MAUI MEM MEDICAL CENTER	MEDICAL STAFF ADMIN	56540	PHYSICIAN ASST		12/1/2008	\$ 140,000.00	\$ -	Authorized to Recruit
MAUI MEM MEDICAL CENTER	MEDICAL STAFF ADMIN	56541	PHYSICIAN ASST		12/1/2008	\$ 130,000.00	\$ -	Authorized to Recruit
MAUI MEM MEDICAL CENTER	MED-SURG INTENSIVE CARE	56542	REGISTERED PROF NURSE III		12/1/2008	\$ 74,328.00	\$ -	Authorized to Recruit
MAUI MEM MEDICAL CENTER	MED-SURG INTENSIVE CARE	56543	REGISTERED PROF NURSE III		12/1/2008	\$ 74,328.00	\$ -	Authorized to Recruit
MAUI MEM MEDICAL CENTER	MED-SURG INTENSIVE CARE	56544	REGISTERED PROF NURSE III		12/1/2008	\$ 74,328.00	\$ -	Authorized to Recruit
MAUI MEM MEDICAL CENTER	MED-SURG INTENSIVE CARE	56545	REGISTERED PROF NURSE III		12/1/2008	\$ 74,328.00	\$ -	Authorized to Recruit
MAUI MEM MEDICAL CENTER	MED-SURG INTENSIVE CARE	56546	REGISTERED PROF NURSE III		12/1/2008	\$ 74,328.00	\$ -	Authorized to Recruit





HHSC VACANCIES  
DEC. 2008

Facility	Department	Position	PosDescription	Exempt Position?	Vacancy Date	Amount Budgeted for this Position	Amount Actually Paid for this position when it was last filled	Authorized or Not Authorized to Recruit
MAUI MEM MEDICAL CENTER	NURSING FLOAT PERSONNEL	109109	PER DIEM CNA	Exempt	12/22/2008	\$ 18.35	\$ 18.35	Authorized to Recruit
MAUI MEM MEDICAL CENTER	NURSING FLOAT PERSONNEL	109110	PER DIEM CNA	Exempt	1/27/2008	\$ 18.35	\$ 17.45	Authorized to Recruit
MAUI MEM MEDICAL CENTER	NURSING FLOAT PERSONNEL	109265	PER DIEM NURSE	Exempt	12/15/2008	\$ 36.62	\$ 36.62	Authorized to Recruit
MAUI MEM MEDICAL CENTER	NURSING FLOAT PERSONNEL	109267	PER DIEM NURSE	Exempt	12/11/2008	\$ 36.62	\$ 36.62	Authorized to Recruit
MAUI MEM MEDICAL CENTER	NURSING FLOAT PERSONNEL	109268	PER DIEM NURSE	Exempt	8/29/2008	\$ 36.62	\$ 36.62	Authorized to Recruit
MAUI MEM MEDICAL CENTER	MEDICAL STAFF ADMIN	109269	STAFF SURGEON	Exempt	7/16/2006	\$ 600,000.00	\$ -	Authorized to Recruit
MAUI MEM MEDICAL CENTER	NURSING FLOAT PERSONNEL	109280	PER DIEM LPN	Exempt	8/22/2007	\$ 21.44	\$ 20.38	Authorized to Recruit
MAUI MEM MEDICAL CENTER	NURSING FLOAT PERSONNEL	109281	PER DIEM LPN	Exempt	1/26/2008	\$ 21.44	\$ 20.38	Authorized to Recruit
MAUI MEM MEDICAL CENTER	NURSING FLOAT PERSONNEL	109282	PER DIEM LPN	Exempt	11/1/2006	\$ 21.44	\$ -	Authorized to Recruit
MAUI MEM MEDICAL CENTER	MEDICAL STAFF ADMIN	109300	MEDICAL DIRECTOR	Exempt	7/16/2007	\$ 600,000.00	\$ -	Authorized to Recruit
MAUI MEM MEDICAL CENTER	NURSING FLOAT PERSONNEL	109301	PER DIEM CNA	Exempt	3/26/2008	\$ 18.35	\$ 17.65	Authorized to Recruit
MAUI MEM MEDICAL CENTER	MEDICAL STAFF ADMIN	109319	STAFF SURGEON	Exempt	10/1/2008	\$ 600,000.00	\$ -	Authorized to Recruit
MAUI MEM MEDICAL CENTER	NURSING FLOAT PERSONNEL	109336	PER DIEM NURSE	Exempt	12/1/2008	\$ 36.62	\$ -	Authorized to Recruit
MAUI MEM MEDICAL CENTER	NURSING FLOAT PERSONNEL	109337	PER DIEM NURSE	Exempt	12/1/2008	\$ 36.62	\$ -	Authorized to Recruit
MAUI MEM MEDICAL CENTER	NURSING FLOAT PERSONNEL	109338	PER DIEM NURSE	Exempt	12/1/2008	\$ 36.62	\$ -	Authorized to Recruit
MAUI MEM MEDICAL CENTER	NURSING FLOAT PERSONNEL	109339	PER DIEM NURSE	Exempt	12/1/2008	\$ 36.62	\$ -	Authorized to Recruit
MAUI MEM MEDICAL CENTER	NURSING FLOAT PERSONNEL	109340	PER DIEM NURSE	Exempt	12/1/2008	\$ 36.62	\$ -	Authorized to Recruit
KAUAI VETERANS MEMORIAL HOSP	WEST KAUAI CLINIC	20744	HEALTH INFO TECH II	Exempt	12/28/2007	\$ 19,607.00	\$ -	Authorized
KAUAI VETERANS MEMORIAL HOSP	GENERAL ACCOUNTING	20746	SECRETARY II	Exempt	9/18/2008	\$ 34,955.00	\$ 9,781.00	Authorized
KAUAI VETERANS MEMORIAL HOSP	SKILLED NURSING CARE	20886	LICENSED PRACTICAL NURSE ENTRY	Incumbent: Ranelle Kaawa	8/19/2007	\$ 33,969.00	\$ -	Authorized
KAUAI VETERANS MEMORIAL HOSP	PLANT MAINTENANCE	24515	BUILDING & GROUNDS SUPVR II	Exempt	6/5/2001	\$ 47,454.00	\$ -	Authorized
KAUAI VETERANS MEMORIAL HOSP	MEDICAL RECORDS	30370	HEALTH INFO ADMR	Exempt	2/1/2008	\$ 42,498.00	\$ -	Authorized
KAUAI VETERANS MEMORIAL HOSP	EMERGENCY SERVICES	30858	REGISTERED PROF NURSE III	Exempt	10/1/2008	\$ 78,654.00	\$ 13,012.00	Authorized
KAUAI VETERANS MEMORIAL HOSP	MEDICAL RECORDS	33279	HEALTH INFO TECH I	Exempt	3/24/2007	\$ 16,821.00	\$ -	Authorized
KAUAI VETERANS MEMORIAL HOSP	UTILIZATION MANAGEMENT	34083	REGISTERED PROF NURSE VI	Exempt	2/2/2008	\$ 77,449.00	\$ -	Authorized
KAUAI VETERANS MEMORIAL HOSP	RADIOLOGY-DIAGNOSTIC	45288	RADIOLOGY SPCLST II	Exempt	12/13/2008	\$ 67,620.00	\$ 34,864.00	Authorized
KAUAI VETERANS MEMORIAL HOSP	WEST KAUAI CLINIC	55326	PATIENT FIN SVCS MGR I	Exempt	1/1/2008	\$ -	Unfunded	Not Authorized
KAUAI VETERANS MEMORIAL HOSP	WEST KAUAI CLINIC	55327	HEALTH INFO TECH II	Exempt	12/18/2007	\$ 16,806.00	\$ -	Authorized
KAUAI VETERANS MEMORIAL HOSP	WEST KAUAI CLINIC	55550	OUTPATIENT CLINICAL ASST FP	Exempt	11/3/2007	\$ -	Unfunded	Not Authorized
KAUAI VETERANS MEMORIAL HOSP	WEST KAUAI CLINIC	55551	LICENSED PRACTICAL NURSE ENTRY	Exempt	1/16/2007	\$ -	Unfunded	Not Authorized
KAUAI VETERANS MEMORIAL HOSP	SURGERY GEN-MAJOR	56024	REGISTERED PROF NURSE III	Exempt	1/22/2007	\$ 63,008.00	\$ -	Authorized
KAUAI VETERANS MEMORIAL HOSP	CLINICAL LAB SVCS	56040	MEDICAL TECHNOLOGIST III	Exempt	2/1/2007	\$ -	Unfunded	Authorized
KAUAI VETERANS MEMORIAL HOSP	PLANT MAINTENANCE	56050	PROJECT MANAGER	Exempt	1/31/2007	\$ -	Unfunded	Not Authorized
KAUAI VETERANS MEMORIAL HOSP	HOUSEKEEPING	56130	JANITOR II	Temporary	3/20/2007	\$ -	\$ -	Authorized
KAUAI VETERANS MEMORIAL HOSP	PHYSICAL THERAPY	56131	PHYSICAL THERAPIST III	Exempt	10/1/2008	\$ 57,153.00	\$ 16,490.00	Authorized
KAUAI VETERANS MEMORIAL HOSP	DATA PROCESSING	56134	DATA PROC SYSTEMS ANALYST IV	Exempt	4/27/2007	\$ 41,486.00	\$ -	Authorized
KAUAI VETERANS MEMORIAL HOSP	HUMAN RESOURCES	56142	COMMUNITY REL & PROG MGR	Exempt	10/1/2007	\$ 27,750.00	\$ -	Authorized
KAUAI VETERANS MEMORIAL HOSP	HOSPITAL ADMINISTRATION	56144	REGISTERED PROF NURSE V	Exempt	10/16/2007	\$ -	Unfunded	Not Authorized

HHSC VACANCIES  
DEC. 2008

Facility	Department	Position	PosDescription	Exempt Position?	Vacancy Date	Amount Budgeted for this Position	Amount Actually Paid for this position when it was last filled	Authorized or Not Authorized to Recruit
KAUAI VETERANS MEMORIAL HOSP	WEST KAUAI CLINIC	56145	ADMITTING CLERK I		11/1/2007	\$ 16,191.00		Authorized
KAUAI VETERANS MEMORIAL HOSP	SURGERY GEN-MAJOR	56150	OPERATING ROOM ASST FP		9/1/2008	\$ -	Unfunded	Not Authorized
KAUAI VETERANS MEMORIAL HOSP	RADIOLOGY DIAGNOSTIC	56553	RADIOLOGIC TECH FP		11/10/2008	\$ 44,412.00		Authorized
KAUAI VETERANS MEMORIAL HOSP	OBSTETRICS ACUTE	56555	HEALTH UNIT CLERK II		11/10/2008	\$ 27,756.00		Authorized
KAUAI VETERANS MEMORIAL HOSP	HOSPITAL ADMINISTRATION	101688	REGIONAL CEO	Exempt	11/1/2008	\$ 194,000.00	\$ 122,786.00	Authorized
KAUAI VETERANS MEMORIAL HOSP	HOSPITAL ADMINISTRATION	105985	STUDENT HELPER I	Exempt	2/28/2008	\$ 4,524.00		Authorized
KAUAI VETERANS MEMORIAL HOSP	HOSPITAL ADMINISTRATION	105986	STUDENT HELPER I	Exempt	8/11/2002	\$ -		Authorized
KAUAI VETERANS MEMORIAL HOSP	NURSING ADMIN-ACUTE	108658	PER DIEM NURSE	Exempt	7/3/2008	\$ 24,582.00		Authorized
KAUAI VETERANS MEMORIAL HOSP	NURSING ADMIN-ACUTE	108659	PER DIEM NURSE	Exempt	4/29/2008	\$ 24,582.00		Authorized
KAUAI VETERANS MEMORIAL HOSP	NURSING ADMIN-ACUTE	108662	PER DIEM NURSE	Exempt	12/16/2007	\$ 24,582.00		Authorized
KAUAI VETERANS MEMORIAL HOSP	NURSING ADMIN-ACUTE	108663	PER DIEM NURSE	Exempt	11/11/2008	\$ 24,582.00		Authorized
KAUAI VETERANS MEMORIAL HOSP	WEST KAUAI CLINIC	108895	PER DIEM NURSE	Exempt	11/2/2008	\$ 23,022.00		Authorized
KAUAI VETERANS MEMORIAL HOSP	NURSING ADMIN-ACUTE	108897	PER DIEM NURSE	Exempt	4/14/2008	\$ 24,582.00		Authorized
KAUAI VETERANS MEMORIAL HOSP	NURSING ADMIN-ACUTE	108968	PER DIEM CNA	Exempt	12/15/2006	\$ 11,516.00		Authorized
KAUAI VETERANS MEMORIAL HOSP	NURSING ADMIN-ACUTE	108970	PER DIEM LPN	Exempt	8/4/2005	\$ 13,457.00		Authorized
KAUAI VETERANS MEMORIAL HOSP	NURSING ADMIN-ACUTE	108971	PER DIEM LPN	Exempt	8/4/2005	\$ 13,457.00		Authorized
KAUAI VETERANS MEMORIAL HOSP	NURSING ADMIN-ACUTE	108972	PER DIEM LPN	Exempt	6/23/2004	\$ 13,457.00		Authorized
KAUAI VETERANS MEMORIAL HOSP	WEST KAUAI CLINIC	109121	MEDICAL DIRECTOR	Exempt	1/1/2008	\$ -		Authorized
KAUAI VETERANS MEMORIAL HOSP	WEST KAUAI CLINIC	109123	PER DIEM LPN	Exempt	11/16/2008	\$ 13,457.00		Authorized
KAUAI VETERANS MEMORIAL HOSP	EMERGENCY SERVICES	109275	MEDICAL DIRECTOR	Exempt	9/21/2007	\$ -		Authorized
SAMUEL MAHELONA MEM HOSP	MEDICAL RECORDS	20745	CLERK TYPIST III		11/29/2007	\$ 13,878.00		Authorized
SAMUEL MAHELONA MEM HOSP	PSYCH ACUTE-ADULT	20765	LICENSED PRACTICAL NURSE ENTRY		11/27/2007	\$ -		Not Authorized
SAMUEL MAHELONA MEM HOSP	SKILLED NURSING CARE	20769	LICENSED PRACTICAL NURSE FP		7/1/2008	\$ 36,828.00		Y - Position Offered
SAMUEL MAHELONA MEM HOSP	HOUSEKEEPING	20806	JANITOR II		12/1/2008	\$ 32,980.00	\$ 14,804.00	Y - interviews to be conducted
SAMUEL MAHELONA MEM HOSP	PLANT MAINTENANCE	20814	BLDG MAINT WORKER I		12/1/2008	\$ 43,988.00	\$ 19,715.00	Y - interviews to be conducted
SAMUEL MAHELONA MEM HOSP	PHARMACY	21798	PHARMACY TECHNICIAN FP		5/31/2008	\$ 24,321.00		Y - awaiting reorg
SAMUEL MAHELONA MEM HOSP	PSYCH ACUTE-ADULT	34620	LICENSED PRACTICAL NURSE FP		4/5/2000	\$ -		Not Authorized
SAMUEL MAHELONA MEM HOSP	HOSPITAL ADMINISTRATION	53525	MANAGEMENT ANALYST III		9/29/2001	\$ -		Not Authorized
SAMUEL MAHELONA MEM HOSP	DATA PROCESSING	54052	DATA PROC SYSTEMS ANALYST IV		6/4/2008	\$ 41,184.00		Not Authorized
SAMUEL MAHELONA MEM HOSP	SOCIAL WORK SVCS	55278	SOCIAL WORKER III		9/11/2006	\$ -		Not Authorized
SAMUEL MAHELONA MEM HOSP	PSYCH ACUTE-ADULT	55884	CLERK III		8/4/2006	\$ -		Not Authorized
SAMUEL MAHELONA MEM HOSP	PHARMACY	56041	PHARMACIST II		2/1/2007	\$ 4,506.67		N - to be abolished
SAMUEL MAHELONA MEM HOSP	SKILLED NURSING CARE	56127	REGISTERED PROF NURSE II		2/1/2007	\$ -		Y - awaiting reorg
SAMUEL MAHELONA MEM HOSP	RADIOLOGY-DIAGNOSTIC	56128	RADIOLOGIC TECH FP		2/1/2007	\$ 10,833.33		Y - used for TA purposes
SAMUEL MAHELONA MEM HOSP	OTHER AMBULATORY SERVICES	56137	LICENSED PRACTICAL NURSE FP		8/14/2007	\$ 9,207.00		Authorized
SAMUEL MAHELONA MEM HOSP	OTHER AMBULATORY SERVICES	56138	ADMITTING CLERK I		8/14/2007	\$ 6,939.00		Not Authorized



HHSC VACANCIES  
DEC. 2008

Facility	Department	Position	Pos Description	Exempt Position?	Vacancy Date	Amount Budgeted for this Position	Amount Actually Paid for this position when it was last filled	Authorized or Not Authorized to Recruit
SAMUEL MAHELONA MEM HOSP	SKILLED NURSING CARE	56146	REGISTERED PROF NURSE III		8/1/2008			Not Authorized
SAMUEL MAHELONA MEM HOSP	NURSING ADMIN-ACUTE	108703	PER DIEM NURSE	Exempt	11/13/2008	\$ 26,208.00	\$ 1,750.00	Not Authorized
SAMUEL MAHELONA MEM HOSP	NURSING ADMIN-ACUTE	108705	PER DIEM NURSE	Exempt	4/13/2008	\$ 26,208.00	\$ 20,864.00	Authorized
SAMUEL MAHELONA MEM HOSP	NURSING ADMIN-ACUTE	108976	PER DIEM NURSE	Exempt	5/21/2008	\$ 26,208.00		Authorized
MALUHIA	RECREATIONAL THERAPY	56043	ACTIVITIES COORDINATOR FP		11/16/07	\$ 38,184.00	\$ 39,937.71	YES
MALUHIA	ADULT DAY HEALTH CARE	56436	ADULT DAY HLTH AIDE FP		09/05/08	\$ 34,440.00	\$ 34,440.00	NO
MALUHIA	PLANT MAINTENANCE	18461	BLDG MAINT WORKER I		01/16/08	UNFUNDED	\$ 41,460.00	NO
MALUHIA	SKILLED NURSING CARE	20978	CERTIFIED NURSE AIDE FP		11/01/08	\$ 30,756.00	\$ 33,372.00	YES
MALUHIA	SKILLED NURSING CARE	20979	CERTIFIED NURSE AIDE FP		05/16/08	\$ 30,756.00	\$ 31,116.00	YES
MALUHIA	SKILLED NURSING CARE	28572	CERTIFIED NURSE AIDE FP		01/02/06	\$ 30,756.00	\$ 27,456.00	YES
MALUHIA	SKILLED NURSING CARE	35947	CERTIFIED NURSE AIDE FP		12/31/05	UNFUNDED	\$ 27,456.00	NO
MALUHIA	SKILLED NURSING CARE	56455	CERTIFIED NURSE AIDE FP		10/09/08	\$ 30,756.00	NEW POSN	YES
MALUHIA	SKILLED NURSING CARE	56461	CERTIFIED NURSE AIDE FP		11/14/08	\$ 30,756.00	NEW POSN	YES
MALUHIA	SKILLED NURSING CARE	56462	CERTIFIED NURSE AIDE FP		11/14/08	\$ 30,756.00	NEW POSN	YES
MALUHIA	SKILLED NURSING CARE	56463	CERTIFIED NURSE AIDE FP		11/14/08	\$ 30,756.00	NEW POSN	YES
MALUHIA	SKILLED NURSING CARE	56464	CERTIFIED NURSE AIDE FP		11/14/08	\$ 30,756.00	NEW POSN	YES
MALUHIA	SKILLED NURSING CARE	56465	CERTIFIED NURSE AIDE FP		11/14/08	\$ 30,756.00	NEW POSN	YES
MALUHIA	SKILLED NURSING CARE	56466	CERTIFIED NURSE AIDE FP		11/14/08	\$ 30,756.00	NEW POSN	YES
MALUHIA	SKILLED NURSING CARE	56467	CERTIFIED NURSE AIDE FP		11/14/08	\$ 30,756.00	NEW POSN	YES
MALUHIA	HOSPITAL ADMINISTRATION	21084	CLERK STENOGRAPHER II		07/07/07	\$ 25,668.00	\$ 26,688.00	YES
MALUHIA	DIETARY	56163	DIETITIAN III		07/01/07	UNFUNDED	NEW POSN	YES
MALUHIA	MEDICAL RECORDS	54996	HEALTH INFO TECH II		05/14/08	UNFUNDED	\$ 46,200.00	NO
MALUHIA	NURSING ADMIN-LTC	55442	HEALTH UNIT CLERK II		01/01/08	UNFUNDED	\$ 60,744.00	NO
MALUHIA	PLANT MAINTENANCE	18457	INSTITUTION FACILITIES SUPT II		08/01/08	UNFUNDED	\$ 34,632.00	NO
MALUHIA	DIETARY	21022	INSTITUTION FOOD SVCS MGR II		10/01/07	UNFUNDED		NO
MALUHIA	HOUSEKEEPING	21078	JANITOR II		05/31/08	\$ 31,236.00	\$ 31,596.00	
MALUHIA	HOUSEKEEPING	21080	JANITOR II		03/14/06	UNFUNDED	\$ 31,595.00	NO
MALUHIA	HOUSEKEEPING	23610	JANITOR II		09/29/07	UNFUNDED	\$ 31,236.00	NO
MALUHIA	LAUNDRY & LINEN	21068	LAUNDRY HELPER I		07/01/07	UNFUNDED	\$ 30,036.00	NO
MALUHIA	SKILLED NURSING CARE	20960	LICENSED PRACTICAL NURSE FP		08/11/08	\$ 35,004.00	\$ 36,828.00	YES
MALUHIA	SKILLED NURSING CARE	20962	LICENSED PRACTICAL NURSE FP		09/04/08	\$ 35,004.00	\$ 36,828.00	YES
MALUHIA	SKILLED NURSING CARE	20975	LICENSED PRACTICAL NURSE FP		07/01/08	\$ 35,004.00	\$ 42,888.00	YES
MALUHIA	SKILLED NURSING CARE	20989	LICENSED PRACTICAL NURSE FP		12/12/06	UNFUNDED	\$ 36,816.00	NO
MALUHIA	ADULT DAY HEALTH CARE	56441	LICENSED PRACTICAL NURSE FP		09/16/08	\$ 36,828.00	\$ 36,828.00	YES
MALUHIA	ADULT DAY HEALTH CARE	37487	PARA MEDICAL ASSISTANT II		07/01/08	\$ 33,120.00	\$ 34,641.14	YES
MALUHIA	SKILLED NURSING CARE	28575	PATIENT CARE TECH FP		10/01/08	\$ 34,641.14	\$ 34,440.00	YES
MALUHIA	NURSING ADMIN-LTC	109130	PER DIEM CNA	Exempt	11/01/04	UNFUNDED	\$ 15.97	NO
MALUHIA	NURSING ADMIN-LTC	109131	PER DIEM CNA	Exempt	05/13/06	UNFUNDED	\$ 15.97	NO

HHSC VACANCIES  
DEC. 2008

Facility	Department	Position	PosDescription	Exempt Position?	Vacancy Date	Amount Budgeted for this Position	Amount Actually Paid for this position when it was last filled	Authorized or Not Authorized to Recruit
MALUHIA	NURSING ADMIN-LTC	109132	PER DIEM CNA	Exempt	09/30/06	UNFUNDED	\$ 16.37	NO
MALUHIA	NURSING ADMIN-LTC	109133	PER DIEM CNA	Exempt	11/01/04	UNFUNDED	NOT FILLED	NO
MALUHIA	NURSING ADMIN-LTC	109134	PER DIEM CNA	Exempt	11/01/04	UNFUNDED	NOT FILLED	NO
MALUHIA	NURSING ADMIN-LTC	109135	PER DIEM CNA	Exempt	11/01/04	UNFUNDED	NOT FILLED	NO
MALUHIA	ADULT DAY HEALTH CARE	109147	PER DIEM CNA	Exempt	04/06/08	\$ 18.35	\$ 18.35	NO
MALUHIA	ADULT DAY HEALTH CARE	109149	PER DIEM CNA	Exempt	08/02/08	\$ 18.35	\$ 18.35	NO
MALUHIA	SKILLED NURSING CARE	108942	PER DIEM NURSE	Exempt	09/12/06	UNFUNDED	\$ 30.99	NO
MALUHIA	SKILLED NURSING CARE	108943	PER DIEM NURSE	Exempt	01/20/07	UNFUNDED	\$ 26.25	NO
MALUHIA	SKILLED NURSING CARE	108944	PER DIEM NURSE	Exempt	02/18/07	UNFUNDED	\$ 32.87	NO
MALUHIA	SKILLED NURSING CARE	108945	PER DIEM NURSE	Exempt	08/04/06	UNFUNDED	\$ 32.23	NO
MALUHIA	RECREATIONAL THERAPY	56045	RECREATIONAL AIDE FP	Exempt	06/26/07	UNFUNDED	\$ 33.53	NO
MALUHIA	SKILLED NURSING CARE	56456	REGISTERED PROF NURSE II		07/01/08	UNFUNDED	NEW POSN	NO
MALUHIA	SKILLED NURSING CARE	56457	REGISTERED PROF NURSE II		11/14/08	\$ 57,828.00	NEW POSN	YES
MALUHIA	SKILLED NURSING CARE	56458	REGISTERED PROF NURSE II		11/14/08	\$ 57,828.00	NEW POSN	YES
MALUHIA	SKILLED NURSING CARE	56459	REGISTERED PROF NURSE III		11/14/08	\$ 68,736.00	NEW POSN	YES
MALUHIA	SKILLED NURSING CARE	56460	REGISTERED PROF NURSE III		11/14/08	\$ 68,736.00	NEW POSN	YES
MALUHIA	HOSPITAL ADMINISTRATION	56454	SECRETARY II		10/02/08	\$ 32,424.00	NEW POSN	YES
MALUHIA	RECREATIONAL THERAPY	100992	STUDENT HELPER I	Exempt	07/28/04	UNFUNDED	\$ 6.25	NO
MALUHIA	RECREATIONAL THERAPY	108777	STUDENT HELPER I	Exempt	08/17/01	UNFUNDED	\$ 5.75	NO
MALUHIA	RECREATIONAL THERAPY	100908	STUDENT HELPER II	Exempt	09/22/07	\$ 7.50	\$ 7.50	YES
MALUHIA	RECREATIONAL THERAPY	100909	STUDENT HELPER II	Exempt	06/20/08	\$ 7.50	\$ 7.50	YES
MALUHIA	RECREATIONAL THERAPY	100910	STUDENT HELPER II	Exempt	08/15/08	\$ 7.50	\$ 7.50	YES
MALUHIA	RECREATIONAL THERAPY	100911	STUDENT HELPER II	Exempt	01/12/08	\$ 7.50	\$ 7.50	YES
MALUHIA	RECREATIONAL THERAPY	100912	STUDENT HELPER II	Exempt	01/15/08	UNFUNDED	\$ 7.50	NO
MALUHIA	RECREATIONAL THERAPY	100993	STUDENT HELPER II	Exempt	08/01/06	UNFUNDED	\$ 7.50	NO
MALUHIA	RECREATIONAL THERAPY	108806	STUDENT HELPER II	Exempt	01/05/06	UNFUNDED	\$ 7.50	NO
MALUHIA	RECREATIONAL THERAPY	108807	STUDENT HELPER II	Exempt	04/16/07	UNFUNDED	\$ 7.50	NO
MALUHIA	RECREATIONAL THERAPY	108808	STUDENT HELPER II	Exempt	08/04/01	UNFUNDED	\$ 5.75	NO
MALUHIA	RECREATIONAL THERAPY	108809	STUDENT HELPER II	Exempt	08/03/02	UNFUNDED	\$ 5.75	NO
LEAHI	SNF-ICF SWING	18151	PATIENT CARE TECH FP		09/16/06	UNFUNDED	NOT FILLED	NO
LEAHI	NURSING ADMIN-LTC	18160	REGISTERED PROF NURSE VI		09/05/01	UNFUNDED	\$50,916.00	NO
LEAHI	OFFICE SERVICES	18166	CLERK TYPIST II		09/20/08	UNFUNDED	\$25,668.00	NO
LEAHI	SNF-ICF SWING	18213	LICENSED PRACTICAL NURSE FP		12/01/07	\$ 35,004.00	\$28,496.00	YES
LEAHI	SNF-ICF SWING	18296	LICENSED PRACTICAL NURSE FP		09/01/07	UNFUNDED	\$39,252.00	NO
LEAHI	SNF-ICF SWING	18304	LICENSED PRACTICAL NURSE FP		03/08/05	\$ 35,004.00	\$35,422.00	YES
LEAHI	CENTRAL SVCS & SUPPLIES	18354	CENTRAL SUPPLY TECHNICIAN I		06/30/07	UNFUNDED	\$36,492.00	NO
LEAHI	CLINICAL LAB SVCS	18359	MEDICAL TECHNOLOGIST V		02/01/06	UNFUNDED	\$65,256.00	NO

HHSC VACANCIES  
DEC. 2008

Facility	Department	Position	PosDescription	Exempt Position?	Vacancy Date	Amount Budgeted for this Position	Amount Actually Paid for this position when it was last filled	Authorized or Not Authorized to Recruit
LEAHI	OCCUPATIONAL THERAPY	18374	OCCUPATIONAL THERAPIST II		07/09/05	UNFUNDED	\$32,988.00	NO
LEAHI	RECREATIONAL THERAPY	18377	RECREATIONAL THERAPIST I		09/01/06	UNFUNDED	\$34,652.00	NO
LEAHI	FOUNDATIONS	18402	FOUNDATIONSKEEPER I		12/01/07	UNFUNDED	\$31,236.00	NO
LEAHI	FOUNDATIONS	18405	FOUNDATIONSKEEPER I		08/05/08	\$ 32,856.00	\$30,036.00	YES
LEAHI	DIETARY	18410	DIETITIAN V		12/31/05	UNFUNDED	\$65,256.00	NO
LEAHI	DIETARY	18416	COOK II		09/01/06	UNFUNDED	\$35,892.00	NO
LEAHI	DIETARY	18418	COOK II		12/31/07	UNFUNDED	\$39,084.00	NO
LEAHI	DIETARY	18424	COOK I		03/01/08	UNFUNDED	\$34,728.00	NO
LEAHI	DIETARY	18445	KITCHEN HELPER		08/06/08	\$ 31,236.00	\$22,260.00	YES
LEAHI	PLANT MAINTENANCE	18468	BLDG MAINT WORKER I		06/17/08	\$ 41,460.00	\$33,144.00	YES
LEAHI	HOUSEKEEPING	18485	JANITOR II		07/16/08	\$ 31,236.00	\$32,856.00	YES
LEAHI	HOUSEKEEPING	18506	SEWING WORKER I		06/17/08	UNFUNDED	\$33,780.00	NO
LEAHI	PURCHASING & STORES	18519	STORES CLERK II		08/01/08	UNFUNDED	\$24,792.00	NO
LEAHI	HOSPITAL ADMINISTRATION	18529	SECRETARY IV		05/18/06	UNFUNDED	\$56,196.00	NO
LEAHI	HOSPITAL ADMINISTRATION	18530	SECRETARY III		12/29/07	UNFUNDED	\$48,252.00	NO
LEAHI	SNF-ICF SWING	18592	PATIENT CARE TECH FP		01/03/06	UNFUNDED	NEW	NO
LEAHI	DIETARY	18601	KITCHEN HELPER		08/16/06	UNFUNDED	\$28,680.00	NO
LEAHI	HOUSEKEEPING	23611	JANITOR II		02/28/06	UNFUNDED	\$31,595.00	NO
LEAHI	SNF-ICF SWING	23632	CERTIFIED NURSE AIDE FP		12/30/06	UNFUNDED	\$32,364.00	YES
LEAHI	ADULT DAY HEALTH CARE	23650	CERTIFIED NURSE AIDE ENTRY		01/01/50	\$ 29,016.00	\$ 30,528.00	YES
LEAHI	SNF-ICF SWING	30203	CERTIFIED NURSE AIDE FP		01/01/50	\$ 30,756.00	\$28,142.00	YES
LEAHI	OFFICE SERVICES	40030	CLERK STENOGRAPHER III		06/22/07	UNFUNDED	\$31,212.00	NO
LEAHI	OFFICE SERVICES	40730	CLERK TYPIST II		06/01/08	UNFUNDED	\$25,668.00	NO
LEAHI	HOUSEKEEPING	47316	JANITOR II		11/01/08	\$ 31,236.00	\$32,856.00	YES
LEAHI	HUMAN RESOURCES	48588	PERSONNEL MGMT SPECIALIST III		06/09/06	UNFUNDED	NOT FILLED	NO
LEAHI	ADULT DAY HEALTH CARE	52179	CERTIFIED NURSE AIDE ENTRY		01/01/50	\$ 29,016.00	\$ 30,528.00	YES
LEAHI	SNF-ICF SWING	53474	CERTIFIED NURSE AIDE FP		01/01/50	\$ 30,756.00	\$28,850.00	YES
LEAHI	RECREATIONAL THERAPY	53643	OCCUP THERAPY ASST ENTRY		10/22/01	UNFUNDED	NEW	NO
LEAHI	SNF-ICF SWING	53813	CERTIFIED NURSE AIDE FP		01/01/50	\$ 30,756.00	\$31,117.00	YES
LEAHI	HOUSEKEEPING	53947	JANITOR II		01/01/50	UNFUNDED	\$22,256.00	NO
LEAHI	HUMAN RESOURCES	54039	PERSONNEL CLERK III		08/21/08	\$ 25,668.00	\$26,688.00	YES
LEAHI	NURSING ADMIN-LTC	54952	REGISTERED PROF NURSE VI		07/31/02	UNFUNDED	NEW	NO
LEAHI	SNF-ICF SWING	55101	CERTIFIED NURSE AIDE FP		04/28/03	\$ 30,756.00	\$ 32,364.00	YES
LEAHI	RECREATIONAL THERAPY	55255	RECREATIONAL THERAPIST I		04/01/06	UNFUNDED	NEW	NO
LEAHI	HOSPITAL ADMINISTRATION	55306	RESIDENT FINANCIAL COUNSELOR		07/01/06	UNFUNDED	\$31,332.00	NO
LEAHI	SNF-ICF SWING	55336	LICENSED PRACTICAL NURSE FP		11/15/07	\$ 35,004.00	\$35,004.00	YES
LEAHI	PURCHASING & STORES	55431	PURCHASING TECHNICIAN I		10/16/07	UNFUNDED	\$25,764.00	NO
LEAHI	PLANT MAINTENANCE	55590	ELECTRICIAN I		12/06/05	UNFUNDED	\$39,499.00	NO

HHSC VACANCIES  
DEC. 2008

Facility	Department	Position	PosDescription	Exempt Position?	Vacancy Date	Amount Budgeted for this Position	Amount Actually Paid for this position when it was last filled	Authorized or Not Authorized to Recruit
LEAHI	SNF-ICF SWING	55685	CERTIFIED NURSE AIDE FP		03/16/06	\$ 30,756.00	NEW	YES
LEAHI	HOUSEKEEPING	55700	JANITOR II		04/01/06	UNFUNDED	NOT FILLED	NO
LEAHI	MEDICAL RECORDS	56028	CLERK I		02/01/07	UNFUNDED	\$10.15	NO
LEAHI	OCCUPATIONAL THERAPY	56029	OCCUPATIONAL THERAPIST III		02/01/07	UNFUNDED	\$40,518.00	NO
LEAHI	SNF-ICF SWING	56154	CERTIFIED NURSE AIDE FP		03/01/07	\$ 30,756.00	\$36,504.00	YES
LEAHI	RECREATIONAL THERAPY	56156	RECREATIONAL AIDE FP		05/03/08	\$ 32,736.00	\$33,120.00	YES
LEAHI	RECREATIONAL THERAPY	56157	RECREATIONAL AIDE FP		11/29/08	\$ 32,736.00	\$34,440.00	YES
LEAHI	RADIOLOGY-DIAGNOSTIC	56164	RADIOLOGIC TECH FP		08/27/07	UNFUNDED	\$36,504.00	NO
LEAHI	SNF-ICF SWING	56165	REGISTERED PROF NURSE III		08/27/07	UNFUNDED	NEW	NO
LEAHI	NURSING ADMIN-LTC	56169	REGISTERED PROF NURSE II		12/12/07	UNFUNDED	NEW	NO
LEAHI	NURSING ADMIN-LTC	56170	REGISTERED PROF NURSE II		12/12/07	UNFUNDED	NEW	NO
LEAHI	SOCIAL WORK SVCS	56173	SOCIAL WORKER III		07/18/08	UNFUNDED	\$40,152.00	NO
LEAHI	RECREATIONAL THERAPY	100435	STUDENT HELPER II	Exempt	10/01/08	UNFUNDED	\$ 7.50	NO
LEAHI	RECREATIONAL THERAPY	100452	STUDENT HELPER II	Exempt	10/19/08	UNFUNDED	\$ 7.50	NO
LEAHI	RECREATIONAL THERAPY	100907	STUDENT HELPER II	Exempt	08/24/03	UNFUNDED	NOT FILLED	NO
LEAHI	RECREATIONAL THERAPY	101021	STUDENT HELPER II	Exempt	06/04/08	UNFUNDED	\$ 7.50	NO
LEAHI	RECREATIONAL THERAPY	101097	STUDENT HELPER II	Exempt	09/08/06	UNFUNDED	\$ 7.50	NO
LEAHI	RECREATIONAL THERAPY	101098	STUDENT HELPER II	Exempt	09/01/06	UNFUNDED	\$ 7.50	NO
LEAHI	RECREATIONAL THERAPY	101212	STUDENT HELPER II	Exempt	12/15/08	\$ 7.50	\$ 7.50	YES
LEAHI	HOSPITAL ADMINISTRATION	102818	ASST HOSPITAL ADMR	Exempt	10/02/02	UNFUNDED	\$57,388.00	NO
LEAHI	RECREATIONAL THERAPY	105790	STUDENT HELPER II	Exempt	07/27/07	UNFUNDED	\$7.50	NO
LEAHI	ADULT DAY HEALTH CARE	108531	STUDENT HELPER II	Exempt	08/24/02	UNFUNDED	\$6.50	NO
LEAHI	MEDICAL-PHYSICIANS	108538	STAFF PHYSICIAN	Exempt	10/12/06	\$ 250,500.00	\$83,990.00	YES
LEAHI	SNF-ICF SWING	108754	PER DIEM NURSE	Exempt	02/16/07	UNFUNDED	\$32.87	NO
LEAHI	SNF-ICF SWING	108757	PER DIEM NURSE	Exempt	04/11/08	UNFUNDED	\$35.21	NO
LEAHI	SNF-ICF SWING	108759	PER DIEM NURSE	Exempt	03/06/04	UNFUNDED	\$26.25	NO
LEAHI	SNF-ICF SWING	108760	PER DIEM NURSE	Exempt	05/24/08	\$ 36.62	\$35.21	YES
LEAHI	SNF-ICF SWING	108762	PER DIEM NURSE	Exempt	03/10/04	UNFUNDED	\$26.25	NO
LEAHI	DIETARY	108830	STUDENT HELPER II	Exempt	06/30/07	UNFUNDED	\$6.50	NO
LEAHI	ADULT DAY HEALTH CARE	109063	PER DIEM CNA	Exempt	07/16/05	UNFUNDED	NEW	NO

Attachment 6  
Federal Fund Expenditures Exceeding Ceiling for FY08 and FY09 to date

<u>Prog ID</u>	<u>Appropriation Ceiling</u>	<u>Ceiling Increase</u>	<u>Date of Transfer</u>	<u>Reason for Exceeding Ceiling</u>	<u>Recurring (Y/N)</u>	<u>GF Impact (Y/N)</u>
				N/A		



Attachment 8  
CIP Summary

<u>Priority</u>	<u>Project Title</u>	<u>FY10 \$\$\$</u> 10,000,000	<u>FY11 \$\$\$</u> 10,000,000	<u>MOF</u> C
1	Lump Sum for Repair and Maintenance			