

Bank of Hawaii

Hawaii's economic situation "post-Lehman"

*Prepared for a presentation to an informational briefing of the
Hawaii Senate Committee on Labor and
House Committee on Labor and Public Employment*

Tuesday, April 7, 2009

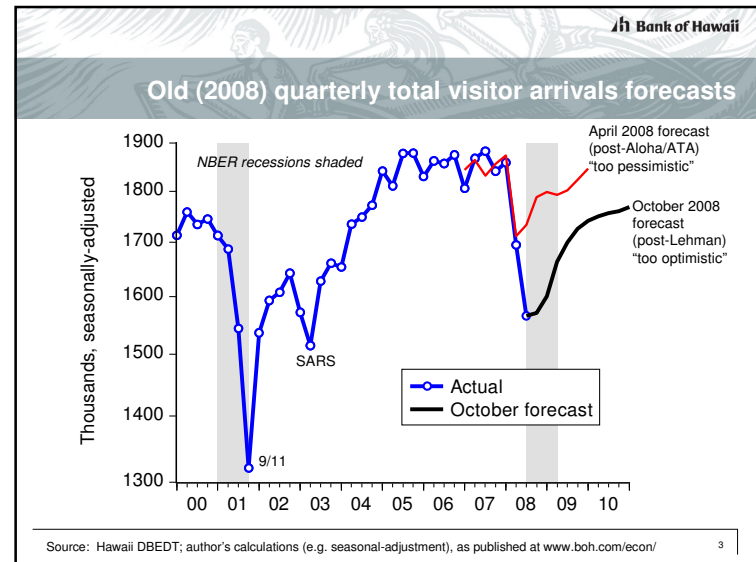
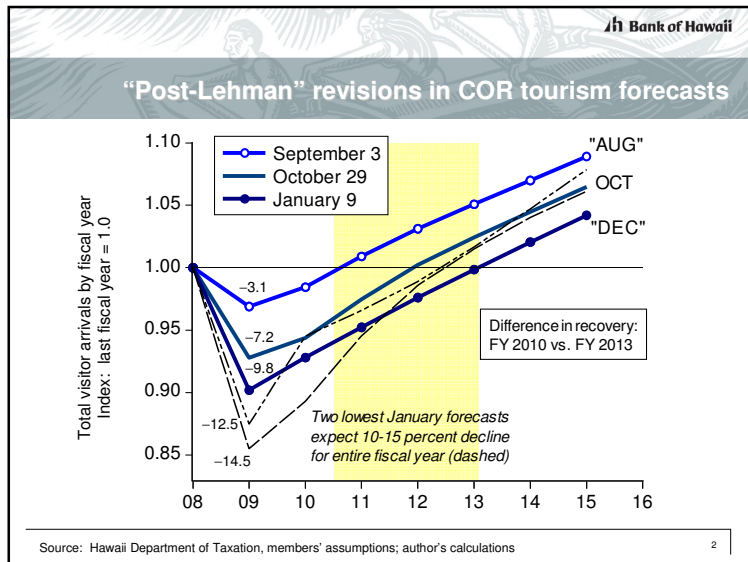
*by Paul H. Brewbaker, Ph.D., TZ Economics
Senior Economic Advisor, Bank of Hawaii*

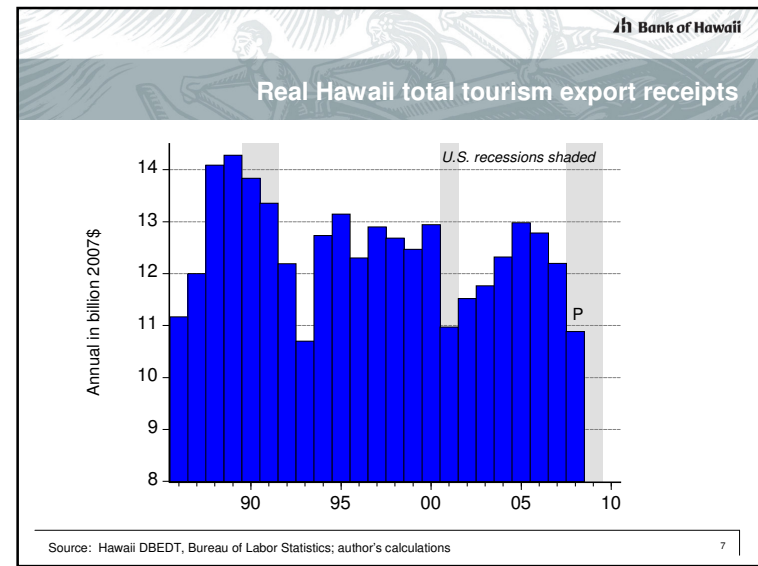
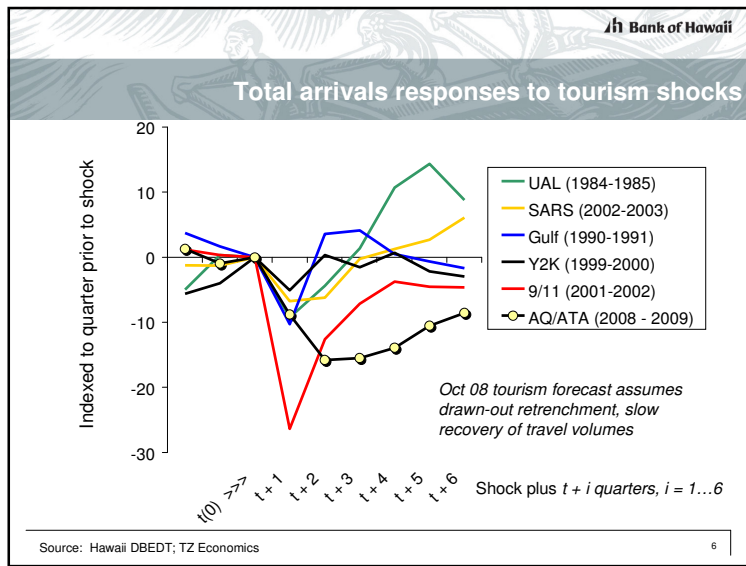
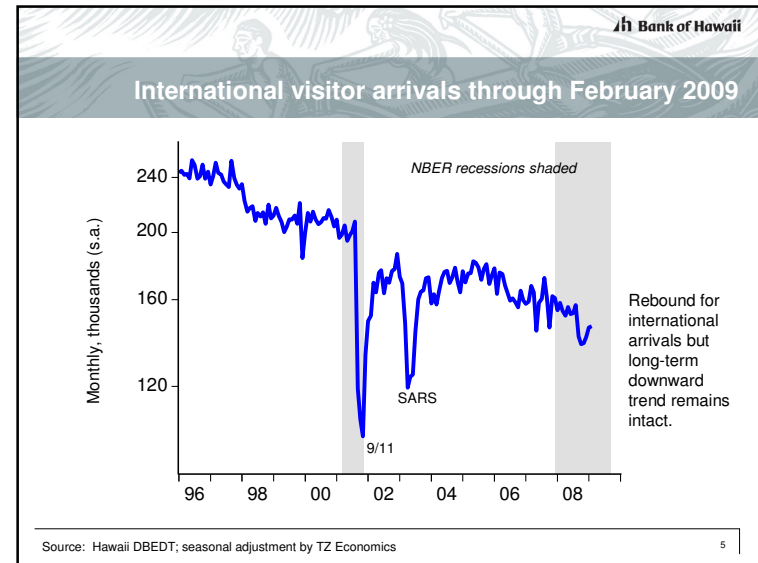
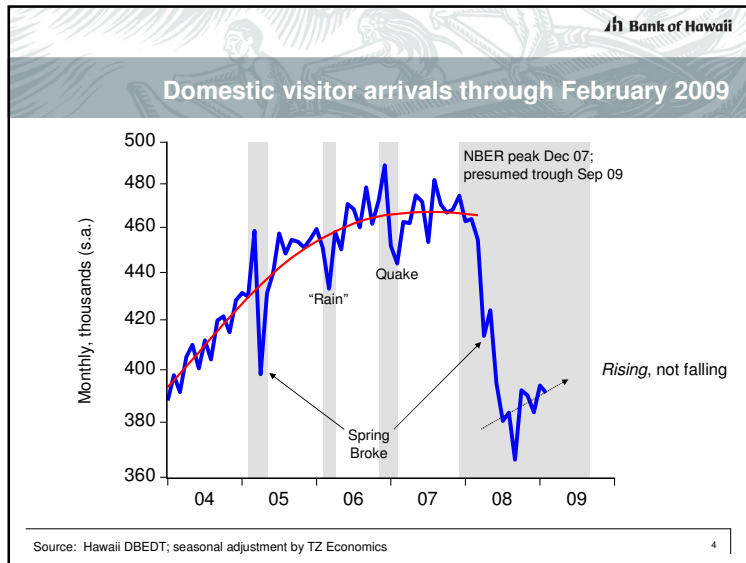
Bank of Hawaii

Disclaimer

The views expressed by the author of this report are not intended to reflect the views of Bank of Hawaii Corporation or its subsidiaries, and should not be construed as investment advice. Research support from the University of Hawaii Research Organization is gratefully acknowledged. Materials in this report were originally prepared for the Construction Financial Management Association on behalf of Bank of Hawaii, whose continuing research support is also gratefully acknowledged.

1





Bank of Hawaii

Financial crisis rooted in housing cycle

