

testimony

From: Dale Evans [dale@charleystaxi.com]
Sent: Tuesday, February 12, 2008 4:50 AM
To: testimony
Subject: SB 3149

EMAIL: testimony@capitol.hawaii.gov

Re: Hearing on SB 3149—Relating to Highways

Requires the remittance of general excise tax revenues from liquid fuel sales to the state highway fund.
Repeals provisions authorizing transfers of revenues deemed excess out of the state highway fund.

February 12, 2008 at 1:15 pm
Conference Room 224, State Capitol
http://www.capitol.hawaii.gov/session2008/hearingnotices/EDT_02-12-08_1_.pdf

TESTIMONY IN SUPPORT of SB 3149 - revised

The federal highway trust fund is broke. It is predicted that the account will actually run out in May this year 2008.

There are many questioned unasked, and unanswered. How will the revenue shortfall be covered? Depending upon the severity of the federal deficit, could the state deficit occur sooner than projected for 2012?

It is a fundamental responsibility of government to provide a safe and efficient transportation system for people and businesses. Potholes and traffic congestion make unsafe driving conditions. Deferred maintenance is taking longer and costing more, as construction costs are sky high.

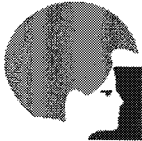
Raising gas taxes is a hard sell as Hawaii motorists pay the highest gas prices and taxes in the USA. Families are struggling with soaring costs: highest rents and mortgages, highest electricity prices and higher food prices due to the ethanol fad of growing food for fuel.

We respectfully urge you approve this measure, SB 3149. Close the loopholes that divert highway trust funds and user fees. Restore the GETax on fuel to the state HTF.

At a time when the national economy is slowing, it is imperative for the state to ensure a reliable and sufficient to ensure systematic and cost-effective programs for the preservation, maintenance, operations, expansion and innovation of highway and bridges.

Dale Evans, President & General Manager
CHARLEY'S TAXI

Founded in 1938, Charley's Taxi is Hawaii's oldest passenger ground transportation company. Our 300-plus drivers in a fleet of about 250 taxicabs, vans and limousines, carry over 2.5 million passengers a year on Oahu. Now in its third generation as a kama'aina small business, Charley's provides the finest premium on-demand transportation service to the public. Our specialized solutions include, MediCab, DUI Alternative, TaxiShuttle and ExecutiveTaxi.

**HAWAII ASPHALT PAVING INDUSTRY**

EMAIL: testimony@capitol.hawaii.gov
Hearing on SB 3149 - Relating to Highways
February 12, 2008 at 1:15 pm
Conference Rm. 224, State Capitol
http://www.capitol.hawaii.gov/session2008/hearingnotices/EDT_02-12-08_1_.pdf

February 11, 2008

To: Senator Carol Fukunaga, Chair and EDT Members

From: Bart Lungren, Executive Director, HAPI

Subject: Written Testimony in Support of SB 3149, Relating to Highways

Thank you Chair Fukunaga and committee members for your time and consideration relating to this important bill. On behalf of the Hawaiian Asphalt Paving Industry (HAPI), we are submitting this written testimony in support of SB 3149, Relating to Highways.

HAPI is a non-profit trade association representing over 20 companies in the State of Hawaii. We fundamentally believe that a well maintained highway infrastructure is paramount for the movement of goods and services in our State, as well as supporting nearly every aspect of our citizens' day to day activities. SB 3149 will provide short and long term funding for planning and programs to ensure a reliable Highway System for our future. It is important that the monies in the Highway fund will have sufficient and consistent revenue streams to ensure that Hawaii's transportation infrastructure is adequately maintained and improved. We urge you to please pass SB 3149. Your support is greatly appreciated.

Respectfully submitted,
Hawaii Asphalt Paving Industry (HAPI)

Bart Lungren
Executive Director

Office: (808) 396-2040
Fax: (808) 396-2041
Cell: (808) 469-6748

**HAPI****HAWAII ASPHALT PAVING INDUSTRY**

February 11, 2008

To: Senator J. Kalani English, Chair and TIA Members

From: Bart Lungren, Executive Director, HAPI

Subject: Written Testimony in Support of SB 3149, Relating to Highways

Thank you Chair English and committee members for your time and consideration relating to this important bill. On behalf of the Hawaiian Asphalt Paving Industry (HAPI), we are submitting this written testimony in support of SB 3149, Relating to Highways.

HAPI is a non-profit trade association representing over 20 companies in the State of Hawaii. We fundamentally believe that a well maintained highway infrastructure is paramount for the movement of goods and services in our State, as well as supporting nearly every aspect of our citizens' day to day activities. SB 3149 will provide short and long term planning and programs to ensure a reliable Highway System for our future. It is important that the monies in the Highway fund will have sufficient and consistent revenue streams to ensure that Hawaii's transportation infrastructure is adequately maintained and improved. We urge you to please pass SB 3149. Your support is greatly appreciated.

Respectfully submitted,
Hawaii Asphalt Paving Industry (HAPI)

Bart Lungren
Executive Director

Office: (808) 396-2040

Fax: (808) 396-2041

Cell: (808) 469-6748

testimony

From: tom heung [kmheung@yahoo.com]
Sent: Tuesday, February 12, 2008 12:01 PM
To: testimony
Subject: SB 3149

Re: Hearing on SB 3149—Relating to Highways
February 12, 2008 at 1:15 pm
Conference Room 224, State Capitol
http://www.capitol.hawaii.gov/session2008/hearingnotices/EDT_02-12-08_1_.pdf

TESTIMONY IN SUPPORT of SB 3149 - revised

Requires the remittance of general excise tax revenues from liquid fuel sales to the state highway fund. Repeals provisions authorizing transfers of revenues deemed excess out of the state highway fund.

The federal highway trust fund is broke. It is predicted that the account will actually run out in May this year 2008.

There are many questioned unasked and unanswered. How will the revenue shortfall be covered? Depending upon the severity of the federal deficit, could the state deficit occur sooner than projected for 2012?

It is a fundamental responsibility of government to provide a safe and efficient transportation system for people and businesses especially in times of emergency, disasters and national defense. Potholes and traffic congestion make unsafe driving conditions. Deferred maintenance is taking longer and costing more, as construction costs are sky high.

Raising gas taxes is a hard sell as Hawaii motorists pay the highest gas prices and gas taxes in the USA. Families are struggling with soaring costs: highest taxes, highest rents and mortgages, highest electricity prices and higher food prices due to the ethanol fad of growing food for fuel.

SB 3149 provides a solution. Close the loopholes that divert highway trust funds and user fees. Restore the GETax on fuel to the state HTF.

As the national economy is slowing, it is imperative for the state to ensure reliable and sufficient funding for the preservation, maintenance, operations, expansion and innovation of Hawaii's highways and bridges.

<!--[if !supportLineBreakNewLine]-->

Thanks for your attention.

Tom Heung
Pre. City Taxi Inc.
1918 Kalani Street, Honolulu Hawaii 96819
Tel: 524-2121
<!--[endif]-->

Hearing on SB 3149 – Relating to Highways

February 12, 2008 at 1:15 pm

Conference Room 224, State Capitol

TESTIMONY IN SUPPORT

Honorable Senators Fukunaga, Chairman, and Espero, Vice Chairman, and Members:

The Hawaii Highway Users Alliance (HHUA) is a state conference of the American Highway Users Alliance (AHUA, commonly known as “the Highway Users.”) HHUA’s mission is to promote highway safety, congestion relief, quality growth and freedom of mobility, to ensure a strong and efficient transportation infrastructure and distribution system for Hawaii.

HHUA strongly supports SB 3149. This bill requires the remittance of general excise tax revenues from liquid fuel sales to the state highway fund. Repeals provisions authorizing transfers of revenues deemed excess out of the state highway fund.

The bankruptcy of the federal Highway Trust Fund (HTF) is predicted to occur in May 2008. The GETax on gasoline amounts to about 14 cents ($\$3.35 \times 4.172\%$). Returning the GETax to the state HTF will help alleviate the shortfall caused by the federal HTF deficit as the federal gas tax is 18.4 cents. However, this is probably not enough since Hawaii is a donee state receiving almost double its contribution into the federal HTF.

People and businesses in Hawaii are already vulnerable to unacceptable levels of unsafe and inefficient operations, congestion, bottlenecks and potholes. Preserving the transportation infrastructure cost-effectively requires the Hawaii DOT to “apply the right fix, at the right time, at the right place.” Our transportation infrastructure is in mediocre shape and our traffic operations management is practically non-existent.

HHUA urges you pass SB 3149 to close the loopholes that divert highway trust funds and user fees. Public confidence in transportation investments is lost as taxpayers wonder where all those monies have gone. The transportation funding process must be reliable and sufficient to ensure systematic and cost-effective programs for the preservation, maintenance, operations, expansion and innovation of highway and bridges.

The state’s HTF is projected be in deficit by 2012. However, depending upon the severity of the federal deficit, the state deficit may occur sooner than 2012. How will the shortfall be covered?

Thank you for the opportunity to testify.

Panos D. Prevedouros, PhD
Professor of Civil Engineering
University of Hawaii at Manoa
President, Hawaii Highway Users Alliance