

Hawaii Island Veterans' Memorial, Inc.
21 Akekeke Street
Hilo, Hi 86720

February 1, 2008

SUBJECT: Testimony in support of SB 2028

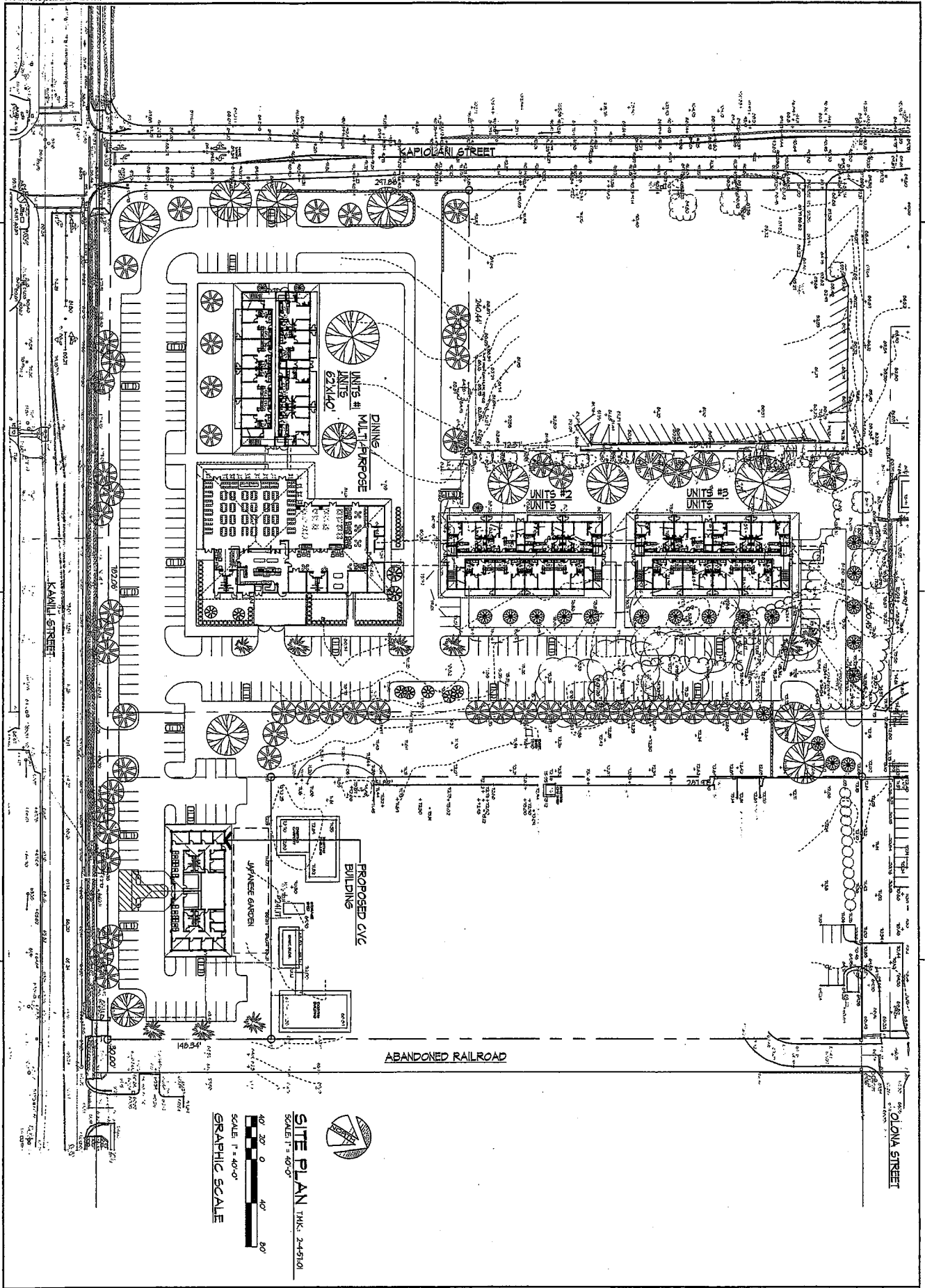
Good afternoon Ladies and Gentlemen of the Senate Committee on Inter-Governmental and Military Affairs: my name is Bob Williams and I'm here to testify on behalf of our member veterans' groups. I'm the current Chairman of Hawaii Island Veterans Memorial, Inc. (HIVM) – a 501c3 non-profit, tax exempt corporation licensed in the state of Hawai'i that was formed in 1997 as an umbrella organization of the various veterans organizations on Hawai'i for the purpose of establishing a veterans center on Hawaii similar to those that exist on each of the other major islands in the state. A secondary purpose was to establish an affordable housing complex nearby that would meet the needs of aging veterans and their dependents within the state such that they could live independently together as a preferred alternative to living apart in a nursing home or in an assisted care facility such as in the veterans' home recently established in Hilo. To this end HIVM's Ka Hui Na Koa's project was conceived and designed in collaboration with various service providers and the surrounding community as a public-private partnership working in tandem with local government, architects, engineers, developers, and bankers in the private sector in order to arrive in the configuration you see before you as our site plan (Encl 1).

To achieve this, a parcel of open state land below the university in Hilo was identified and requested in 1998 and partially acquired in 2001 in time to prepare and submit a grant funding request to the 2001-2 Legislature. They approved a grant for \$2.95 million for final plans, design, and construction but the funds were not released by the governor's office and elapsed. Undeterred, HIVM persisted in acquiring the land and in fund raising. The land request was finally approved in 2003 and transferred to the county for this purpose in 2004, and a start up lease to HIVM was issued by the county in April 2005. Next, the original plans were revised to reflect the changed market conditions, and to gain the input and support of the surrounding community, especially that of the contiguous neighbors to include three churches, Waiakea High School, and the University of Hawaii who all shared a vested interest in the project's outcome. A Final Environmental Assessment (FEA) inclusive of all preliminary engineering requirements was then completed and approved, the lot was partially grubbed and graded

for security as well as for survey and designed purposes, and that was followed by re-zoning and sub-division actions such that the entire lot is now fully entitled and ready for actual construction to begin. These pre-development actions were done entirely from contributions from various professionals from within the community and from funds HIVM raised from the private sector.

HIVM submitted a grant request to last year's Legislature but was told that plans to consolidate Hawai'i Army Guard and Reserve units at the airport took priority, and we were advised to re-apply again in 2008. Following meetings with Island legislators and with the Lt. Governor, we learned of the projected revenue shortfalls and were advised to apply for a more modest amount than we sought in 2007 and to seek this in CIP funds vice grant funds (that the Governor will likely not release). Accordingly, the \$1million in state funds we're seeking here is intended to be enjoined with county funds under the control and supervision of Hawaii County, and be used for final plans and design of our multi-purpose building and the horizontal engineering of the surrounding area, to include residual grubbing and grading, and preliminary infrastructure such as site entrances, culverts, and utility hook ups. Importantly-- and key to our efforts-- this seed money provides tangible evidence of the public funding commitments we can then leverage with the potential donors, private foundations, and others with whom we've been in contact and who have expressed a willingness to contribute to this worthwhile project. Added details are provided in the attachments here (Encl 2).

In closing, I'd like to remind committee members that the state legislature has funded (in entirety for the most part) projects similar to our multi-purpose building for veterans on Kauai, Maui, Molokai, and Oahu, including a second project on Oahu at Foster Village, all within the past several years. By comparison to these our request is modest indeed and our vision, we feel, is more encompassing than the others in that our project seeks to answer a need for the entire community and not simply for the veterans from within. Without some public funding at this key juncture, our housing component of the project in particular will be in jeopardy and our capital campaign will be stalled. We believe we have been resourceful and creative and have served our country and our community in good faith. Now we're asking our state and local governments to help us serve our county's 14,000 Veterans. Malama pono.

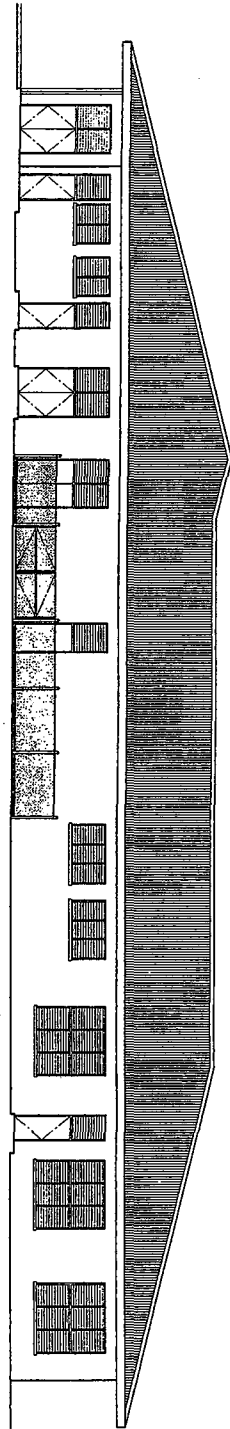


DATE: APRIL 11, 2005
 DESIGNED BY: RONALD H. NAGATA
 DRAWN BY: J. H. HARRIS
 CHECKED BY: J. H. HARRIS
 DATE: APRIL 11, 2005

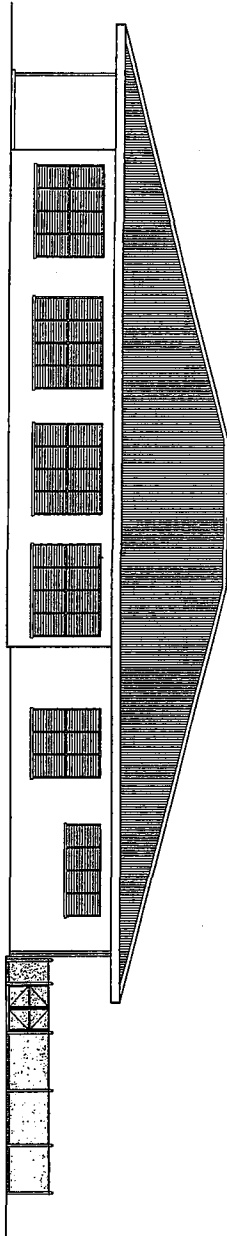
RONALD H. NAGATA A.I.A., INC.
 ARCHITECT
 280 Pehahoa Street, #205 Hilo, Hawaii 96720 Phone: 961-2825
 e-mail: rhn@ronaldnagata.com

PROPOSED CONCEPT PLAN for:
HAWAII ISLAND VETERANS MEMORIAL INC.
 KA HUI NA KOA PROJECT
 HILO, HAWAII 96720

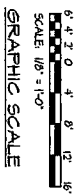
SCHEMATIC DRAWINGS
 PREPARED BY: J. H. HARRIS
 DATE: APRIL 11, 2005
 T.M.K.: 3 2-4-57.1



EAST ELEVATION
SCALE 1/8" = 1'-0"



SOUTH ELEVATION
SCALE 1/8" = 1'-0"



Revised: 01/2009
Date: April 11, 2009
Revised:
A2-201
Sheet 01 of 01

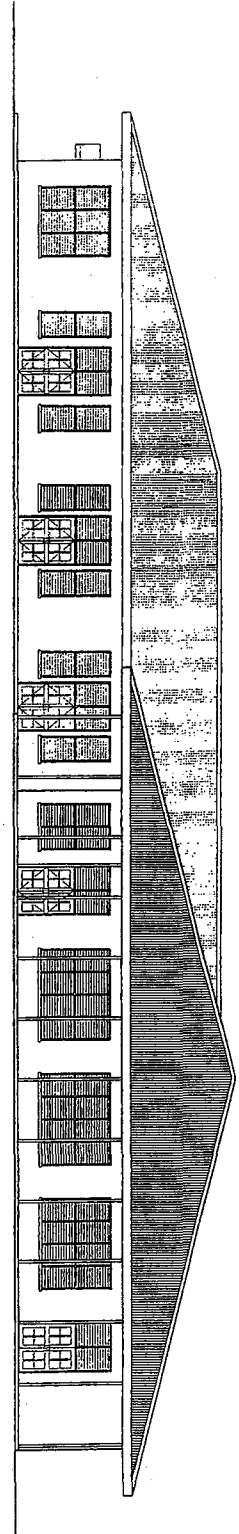
RONALD H. NAGATA A.I.A., INC.
ARCHITECT PLANNER
260 Kauhola Drive, Suite 202 Hilo, Hawaii 96720 Phone: 949-2825
E-mail: ron@rh-nagata.com

PROPOSED CONCEPT PLAN for:
HAWAII ISLAND VETERANS MEMORIAL INC.
KA HUI NA KOA PROJECT
HILO, HAWAII 96720 T.M.K.: 3 2-4-57: 1

HAWAII 2009 ARCHITECT
SCHEMATIC DRAWINGS
This work was prepared by us for the use of the client and is not to be used for any other purpose without our written consent.
DATE: 04/11/09
BY: [Signature]

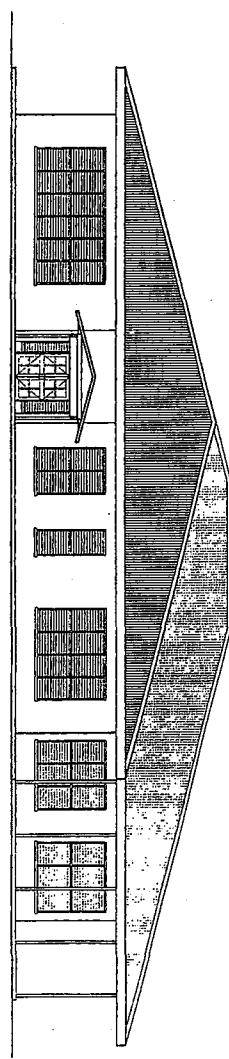
WEST ELEVATION

SCALE: 1/8" = 1'-0"



NORTH ELEVATION

SCALE: 1/8" = 1'-0"



GRAPHIC SCALE
1" = 10'
0' 1' 2' 3' 4' 5' 6' 7' 8' 9' 10'

DATE: APRIL 2006
DRAWN BY: [Name]
CHECKED BY: [Name]
PROJECT: A2-200

RONALD H. NAGATA A.I.A., INC.
ARCHITECT
PLANNER
220 Kalaheo Street, #202 Hilo, Hawaii 96720 Phone 947-2624
FAX 947-2624
www.rhnagata.com

PROPOSED CONCEPT PLAN FOR:
HAWAII ISLAND VETERANS MEMORIAL INC.
KA HUI NA KOA PROJECT
HILO, HAWAII 96720
T.M.K. 3 2-4-57:1

SCHEMATIC DRAWINGS
NAGATA HONOLULU ARCHITECTS
NOTE: THE ARCHITECT'S RESPONSIBILITY IS LIMITED TO THE DESIGN AND CONSTRUCTION OF THE BUILDING AS SHOWN ON THESE DRAWINGS. THE ARCHITECT IS NOT RESPONSIBLE FOR THE ACCURACY OF THE INFORMATION PROVIDED BY OTHER SOURCES. THE ARCHITECT'S OFFICE SHALL BE ADVISED IN WRITING OF ANY CHANGES TO THE PROJECT.

County of Hawaii Fiscal Year June 2008 - July 2009
PROJECT DATA/FINANCIAL IMPACT STATEMENT

DEPARTMENT:		DATE:	January 3, 2008
PROJECT/PROGRAM NAME:	HIVM's Ka Hui Na Koa O Kawili Project	COMPLETED BY:	
LOCATION (attach map):	Waiakea Uka - corner of Kawili and Kapiolani Streets	TMK:	3-2-4-57
COUNCIL DISTRICT:		AMOUNT REQUESTED:	\$500,000

PROJECT/PROGRAM DESCRIPTION:
 The HIVM Project on TMK 3-2-4-57 in toto includes a combined veterans' center building (CVC) on a subdivided lower lot (lot 29); a public-private use multi-purpose building that will be available to the entire island community as a meeting, banquet, and conference center (lot 30, 31); and an affordably priced, ADA-

PROJECT/PROGRAM JUSTIFICATION:
 A. The state, in collaboration with county governments throughout Hawaii, has fully funded the construction/establishment of veterans/community centers on Kauai, Maui, Molokai and Oahu (two separate facilities). HIVM is seeking partial funding support from Hawaii County and Hawaii State government to build one

IMPACT ON OPERATIONAL BUDGET:

EXPENDITURE (x \$1000):	<i>Prior Funding</i>	<i>This FY Request</i>	<i>FY 09-10</i>	<i>FY 10-11</i>	<i>FY 11-12</i>	<i>FY 12-13</i>	<i>FY 13-14</i>	<i>To completion</i>	TOTAL:
Planning		500							\$500
Land Acquisition									
Design/Survey		(included)							
Construction									
Purchase of Equipment									
Repair & Maintenance									
TOTAL:		\$500							\$500
O & M COSTS (x \$1000):									
FUND SOURCE (x \$1000):									
Cty G.O. Bond/Other		500							\$500
Cty Special Revenue (e.g., fuel tax)									
State Revolving Fund									
State CIP		1,000							\$1,000
Federal									
Private*			3,493						
Community Benefit Assesments**									
Special Financing District***									
TOTAL:		\$1,500	\$3,493						\$1,500

* Private: Foundation Grants

** Community Benefit Assesments: Fair Share, Park Dedication, Etc.

*** Special Financing District: Improvement District, Community Facilities District, Tax Increment Financing District

