

OUR CULTURE LIVES THROUGH OUR LANGUAGE



Kawaikini's core curriculum focuses on Hawaiian **LANGUAGE AND CULTURE**. Students in grades K-5 are immersed in the Hawaiian language to the fullest extent possible during the day with formal English instruction beginning in the 5th grade for one hour per day. During grades 6-12, students receive approximately half of their instruction in the medium of the English language, allowing the students at Kawaikini to become **BILINGUAL** in both English and Hawaiian languages.

Kawaikini's program promotes a multi-faceted learning environment. It immerses the students in the language, **VALUES AND TRADITIONS** of Hawaiian culture and fosters an increased level of hands-on experiential learning. This innovative approach of project-based learning is among the most effective types of linguistic programs available in the U.S. and is **FREE TO ALL** Kaua'i students.

The program also allows **PARENTS** to take an active role in their child's education by participating in Hawaiian language classes, developing individualized family goals, as well as attending meetings and school events. This results in accelerated learning for each student due to increased parental involvement. In addition, Kawaikini's exceptional academic standards and **ACCOUNTABILITY** ensure that its students – our future leaders – are endowed with diverse wisdom and perspective.

Take charge of your child's future: kawaikini.com

TRADITIONAL HAWAIIAN VALUES COME TO LIFE

Kawaikini's curriculum encompasses three areas of instruction, each aligned with the Hawai'i State Content and Performance Standards for education, giving students a well-rounded foundation for college and beyond.



KAUA'I A MANOKALANIPO (KAUA'I CURRICULUM):

Science, Social Studies, Fine & Performing Arts and Literature are the focus of this unique Kaua'i-based multidisciplinary curriculum. Hawaiian concepts, traditions of Kaua'i, as well as the expertise of our Kaua'i community are the source of integrated learning opportunities in this portion of the curriculum. Traditional literature of Kaua'i is emphasized.

OLA PONO (HEALTH AND WELLNESS):

The overall well-being of each student is the focus of this curricular area. Daily physical exercise, healthy nutrition and Hawaiian wellness practices are incorporated into the lifestyle at Kawaikini. Running, hiking, swimming, paddling and traditional Hawaiian games are some physical activities students participate in.



KE ALA 'IKE (COLLEGE AND CAREER PREPARATION):

This section of the curriculum provides students with life skills to pursue career and/or college goals upon graduation. Special attention is given to Math, English Language, Arts and Technology. Students have the opportunity in high school to participate in a career mentorship as well as attend classes at Kaua'i Community College.



A VISIONARY CONCEPT IN EDUCATION

Since charter schools first began as an alternative to the traditional public school system, a growing number of parents, teachers and students have experienced the benefits of what this more customized model of education can achieve. Charter schools are publicly funded, supported by legislative mandate and guided by three principles — that they are free to all students who enroll, they operate autonomously and they use new, innovative approaches to educational instruction. In their 15 year history, charter schools have a proven record of scholastic success.

Kawaikini is now among 4,000 plus charter schools serving over 1.2 million students nationwide. As a charter school, Kawaikini empowers parents by providing them a choice in their child's educational well-being and prepares its students for college and career success by equipping them with the tools necessary for a prosperous future.



K A W A I K I N I

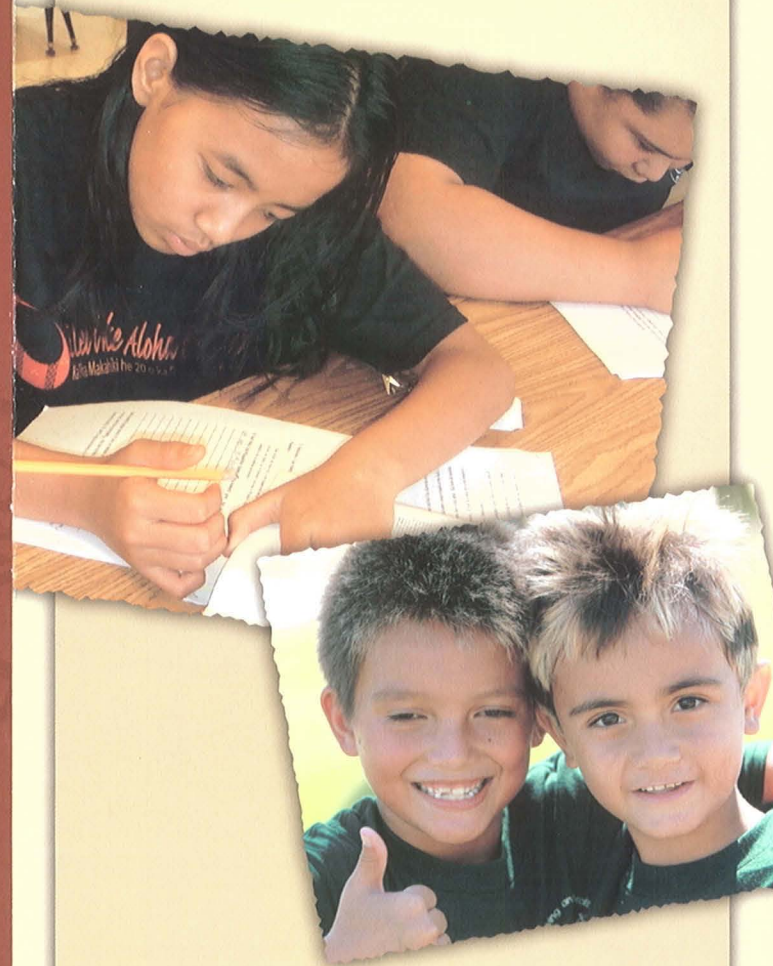
A New Century Public Charter School

For more information, please visit our website at
WWW.KAWAIKINI.COM or call 634.5060



K A W A I K I N I

A New Century Public Charter School



**HAWAIIAN VALUES
HAWAIIAN LANGUAGE
HAWAII'S FUTURE**

IN SUPPORT OF GIA 221-C for Supporting the Language of Kaua'i to plan and construct school facilities and a community resource center for Kawaikini New Century Public School:

Supporting the Language of Kauai, Inc.

Nolan Rapozo, President
Kimo Perry, Vice-President
Isa Segismundo, Treasurer
Leilani Spencer, Secretary
Ezra Kanoho

Kawaikini NCPCS

Local School Board Members

'Alohilani Rogers, President
Kaleimakamae Ka'auwai, Vice President
Corrina Sabala, Treasurer
Marie Bailey, Secretary
Dr. Liela Nitta
Namomi McCorrison
Puuli'ili'i Rossi
Ilima 'Apana

Advisory Board Members

Judy Lenthall, Executive Director, Kaua'i Food Bank
Ezra Kanoho, Former Hawai'i State Representative
Kehau Kekua, Executive Director, Ka'ie'ie Foundation
Frances Dinnan, Director of Financial Aid, Kaua'i Community College
Warren Perry, Native Hawaiian Attorney
Don Heacock, Aquatics Biologist, Dept. of Land & Natural Resources
Dennis Chun, Chair, Dept. of Hawaiian Studies, Kaua'i Community College
Janet Kahelekomo, Hawaiian Kupuna
Tom Shigemoto, Vice President, Alexander & Baldwin Properties
Terri Russell, Chief Financial Officer, Ho'ola Lahui
Ed Renaud, Public Works Director, Kaua'i County

SUPPORTING THE LANGUAGE OF KAUA'I, INC.

TESTIMONY IN SUPPORT OF GRANT-IN-AID FUNDING 221-C

GRANTS-IN-AID INFORMATIONAL BRIEFING

Senate Committee on Ways and Means

House Committee on Finance

Wednesday, March 11, 2008, 9:00am

State Capitol Auditorium

Supporting the Language of Kaua'i, Inc. Board Members:

Nolan Rapozo, President

Kimo Perry, Vice-President

Isa Segismundo, Treasurer

Lailani Spencer, Secretary

Ezra Kanoho, Member

Kawaikini New Century Public Charter School Board Members:

'Alohilani Rogers, President

Kaleimakamae Ka'auwai, Vice President

Marie Bailey, Secretary

Corrina Sabala, Treasurer

Dr. Liela Nitta, Principal of 'Ele'ele Elementary School

Namomi McCorriston, Immersion Elementary School Teacher

Pual'i'i'i Rossi, Kaua'i Community College Hawaiian Studies

Ilma Apana, Immersion Elementary School Teacher

Advisory Board Members:

Dennis Chun, Kaua'i Community College Hawaiian Studies Dept. Chair

Ian Costa, Kaua'i Planning Dept. Director

Don Heacock, Aquatics Biologist, Department of Land & Natural Resources

Janet Kahelekomo, Hawaiian Kupuna

Ezra Kanoho, Former Hawai'i State Representative

Kehau Kekua, Executive Director, Ka'ie'ie Foundation

Judy Lenthall, Executive Director, Kaua'i Food Bank

Warren Perry, Native Hawaiian Attorney

Ed Renaud, Public Works Director, County of Kaua'i

Terri Russell, Chief Financial Officer Ho'ola Lahui Hawai'i

Tom Shigemoto, A & B Properties

SUPPORTING THE LANGUAGE OF KAUA'I, INC.

TESTIMONY IN SUPPORT OF GRANT-IN-AID FUNDING 221-C

Supporters:

Aha Punana Leo, Kanoe Kimana, President
Circles of Light Foundation, Shannon Wiley, Exec. Director
Hau'ula PCS, Dovey Silva, Director
Ho'olako Like, Public Education Support, Shawn Kanaiaupuni
Kamehameha Schools, Kaua'i Center Manager, Donna Aana Nakahara
Kaua'i Community College, Hawaiian Studies Dept. Chair, Dennis Chun
Kaua'i Community College, Na Pua No'eau Center for Gifted and Talented
Hawaiian Students, Sean Chun, Site Coordinator
Kaua'i Community College, Native Hawaiian Career and Technical Education
Program, Kimo Chun, Program Coordinator
Kaua'i Children's Discovery Museum
Kekukuilamalamaho'ola After School Tutoring and Project Based Learning
The Native Hawaiian Education Council - Kaua'i Island Council
Office of Hawaiian Affairs, Community Resource Coordinator for Kaua'i,
Kanani Kagawa
Punana Leo o Kaua'i Hawaiian Immersion Preschool, Lei' lima Rapozo, Director
Royal Order of Kamehameha, Kaumuall'i Chapter
The Baby Hui Organization
University of Hawai'i at Manoa, Institute for Teacher Education, Dr. Kani Blackwell,
Statewide E.E.C.E. Cohort Coordinator for Kaua'i

SUPPORTING THE LANGUAGE OF KAUA'I, INC.

TESTIMONY IN SUPPORT OF GRANT-IN-AID FUNDING 221-C

**To: Senator Rosalyn H. Baker, Chair
Senator Shan S. Tsutsui, Vice Chair
Committee on Ways and Means**

**Representative Marcus R. Oshiro, Chair
Representative Marilyn B. Lee, Vice Chair
Committee on Finance**

I want to testify in strong support of GIA 221-C for Supporting the Language of Kaua'i, Inc. for the purpose of building facilities for Kawaikini New Century Public Charter School and Community Resource Center.

After undergoing a rigorous application and approval process, Kawaikini was authorized as a Charter School on October 29, 2007, to begin serving the public for 2008-09 school year.

The three main emphases for all students are 1) Health and Wellness, 2) Kaua'i Curriculum, and; 3) College Preparation. This public school will address national concerns of obesity and health and wellness of students.

In Partnership with Kaua'i Community College, Kawaikini:

- **is centrally located, and will establish a P-20 community, partnering with other Hawaiian Immersion programs throughout the islands as well as, Punana Leo o Kaua'i, and Kaua'i Community College Department of Hawaiian Studies.**
- **The close proximity to KCC will make teacher training, observation and resource sharing attainable.**
- **Keiki can learn by active participation in community service projects such as maintaining the taro fields on the campus.**
- **Encourages and fosters college readiness and will offer College Preparation for after high school with the College transition program called Running Start.**
- **Will help to create jobs for those students who may not have considered higher education.**
- **Cultivates and guides career opportunities within the Kaua'i community.**

SUPPORTING THE LANGUAGE OF KAUA'I, INC.

TESTIMONY IN SUPPORT OF GRANT-IN-AID FUNDING 221-C

Perpetuation of the Hawaiian Language and Culture:

- Beginning in the 2008-09 school year, Kawalkini will be the only K-12 Hawaiian Immersion School on the island of Kaua'i.
- Will acquire and preserve knowledge from Kupuna and cultural practitioners in written, oral and visual resources to serve the public.
- the future leaders of Kaua'i will be endowed with Hawaiian cultural wisdom and perspective.
- Preserve the precious language and culture that are so important to Hawai'i.
- Help improve the health of our youth by partnering with Ho'ola Lahui Hawaii, a non-profit organization on the island whose purpose is to promote health and wellness through innovative and culturally appropriate activities for children and their families.
- This public school will combine both culture and quality learning.

Mahalo nui loa for providing us the opportunity to speak on behalf of Supporting the Language of Kaua'i, Inc. We appreciate your consideration of our Grant-In-Aid request.



NATIONAL TROPICAL BOTANICAL GARDEN

Chartered by Congress to Create a National Resource in Conservation, Research, and Education

FACT SHEET

PROJECT: THE JULIET RICE WICHMAN BOTANICAL RESEARCH CENTER



Organization:

Founded in 1964, the National Tropical Botanical Garden (NTBG), a multifaceted environmentally-focused non-profit organization, is ideally-positioned to address the crisis in extinction of tropical plants in Hawai'i and the Pacific. Located within our Gardens are renowned research, conservation, and education departments, all specializing in their respected segments of botanical and related sciences.

NTBG's first garden, the McBryde Garden, was established in the Lāwa'i Valley on the island of Kaua'i in 1970. Since that time, NTBG's holdings have grown to encompass five gardens and three preserves throughout the Hawaiian Islands and South Florida totaling over 1,800 acres.

The mission of the National Tropical Botanical Garden is to enrich life through discovery, scientific research, conservation, and education by perpetuating the survival of plants, ecosystems, and cultural knowledge of tropical regions.

The NTBG is supported through private and public contributions.

Project:

The Juliet Rice Wichman Botanical Research Center

Scope:

For over 44-years, NTBG's tropical-focused herbarium, library, and living collections have been indispensable to our scientific research, P-20 education initiatives, and environmental conservation programs. The resources that these collections provide, not only Hawai'i-based researchers and students, but worldwide, are simply incomparable. It is rare to have all three of these resources — comprehensive living collections of tropical flora, an extensive herbarium, and an extraordinary botanical library — within one location.

The recently completed Botanical Research Center will serve as the hub of botanical research, education and conservation in the Pacific, as well as a significant resource for our island community. Through NTBG's education and outreach initiatives, local residents including the children, adults and the elderly learn about tropical botany, ethnobotany and horticulture, as well as the importance of traditional knowledge, and natural and cultural resource management. These resources made available by the NTBG to our island community provide unprecedented opportunities in Hawai'i.

- Location:** National Tropical Botanical Garden's Headquarters campus
Kalāheo, Kauaʻi, Hawaiʻi
- Project Costs:** \$14.5 million
- Campaign:** \$17.5 million, including building endowment and retrofit of existing administration building
- Secured Funding:** \$13.0 million toward total project costs
\$ 1.0 million toward building endowment
- Funding Needed:** \$1.5 million for project costs (2008 Hawaiʻi State Legislature Grant-in-aid Request)
\$1.0 million for building endowment
\$1.0 million for retrofit of existing administration building
- Philosophy:** Sustainable "green" design, construction, and maintenance
- Seeking Gold LEED (Leadership in Energy and Environmental Design) certification
Design:
- To protect the invaluable herbarium and library collections, the building is designed to withstand hurricane-force winds.
 - To meet or exceed green building design and construction
 - 30 kW photovoltaic energy-generating roof
 - 50,000-gallon water catchment capacity
 - Natural light and views
- Footprint:** Approximately 10,000 square feet; two-story.
Total square footage: approximately 20,000 square feet.
- Architect:** Dean Sakamoto Architects, LLC
- Contractor:** Unlimited Construction Services, Inc.
- Construction Start:** January 31, 2007
- Completion Date:** January 31, 2008
- Additional**
- Project Information:** In addition to housing the herbarium and library collections, the Center makes available laboratories and offices, computer stations, a room for processing and drying new plant specimens, and dedicated work space for students, staff, and visiting researchers.
- The Center also serves as the permanent home of the Loy McCandless Marks Botanical Library, the largest and most significant botanical/horticultural collections in Hawaiʻi, with more than 20,000 books, journals, botanical prints, and archival materials.
- The Botanical Research Center is the fourth master-planned structure constructed upon NTBG's Headquarters campus in Kalāheo, Kauaʻi, Hawaiʻi.
- Website:** www.ntbg.org
- Donor Contact:** Guy M. Nakashima, gnakashima@ntbg.org
(808) 346-4046
- Media Contact:** Janet Leopold, leopold@ntbg.org
(808) 332-7324, ext. 241

testimony**LATE**

From: Tom Blackburn-Rodriguez [tominmaui@aol.com]
Sent: Tuesday, March 11, 2008 5:02 PM
To: testimony; FINGIA
Cc: Nandana Kalupahana; Sen. Roz Baker; Rep. Joe Bertram III
Subject: Testimony on South Maui Learning Ohana GIA, State Capitol Auditorium, March 12, 9 AM

Senate Committee on Ways and Means & House Committee on Finance

Joint informational briefings on all grants-in-aid

State Capitol Auditorium

9:00 AM

March 12, 2008

Dear Committee Chairs and Members:

Thank you for the opportunity to provide additional information regarding the GIA application by the South Maui Learning Ohana for planning and design funding to build a state-of-the-art educational and community facility proposed to be located at the Maui Research and Technology Park in Kihei, Maui.

The grant request is for FY 2008-2009 at \$702,700. The proposed building will house the educational programs of the Kihei Charter School, an accredited school serving grades k-12. Students are admitted each year on a lottery basis with all students of all backgrounds and academic achievement levels eligible to attend the school.

Our current enrolment is 326 students, with over 100 on the waiting list. The Kihei Charter school consists of the K-12 Virtual Academy providing a blend of home and on-site instruction and activities, the Science, Technology, Engineering and Math (STEM) Academy, the only school in the state with a fully integrated STEM curriculum, and our successful High School Academy. Eighty percent of our graduates go directly on to higher education.

An Arts Academy for grades 7 & 8 is slated to open in August in partnership with Maui On-Stage and the Maui Academy of Performing Arts (MAPA).

Currently, the Charter school rents all facility space at a cost of over \$500,000 per year. We do not believe this is cost effective. We are on a month-to-month rental at our high school site located in an industrial area in North Kihei and could be asked to leave at any time.

The GIA grant would allow us to move forward on planning & design for the new building in a timely manner.

3/11/2008

Thank you for the opportunity to present our written testimony. If you have any questions I may be reached at 808-875-0700, or via e-mail at gzarro_kiheih@yahoo.com

Sincerely,

Gene Zarro
Chair, South Maui Learning Ohana
President, Kihei Charter School Board
=

FINGIA

From: Tom Blackburn-Rodriguez [tominmaui@aol.com]
Sent: Tuesday, March 11, 2008 5:02 PM
To: testimony; FINGIA
Cc: Nandana Kalupahana; Sen. Roz Baker; Rep. Joe Bertram III
Subject: Testimony on South Maui Learning Ohana GIA, State Capitol Auditorium, March 12, 9 AM

Senate Committee on Ways and Means & House Committee on Finance**Joint informational briefings on all grants-in-aid****State Capitol Auditorium****9:00 AM****March 12, 2008**

Dear Committee Chairs and Members:

Thank you for the opportunity to provide additional information regarding the GIA application by the South Maui Learning Ohana for planning and design funding to build a state-of-the-art educational and community facility proposed to be located at the Maui Research and Technology Park in Kihei, Maui.

The grant request is for FY 2008-2009 at \$702,700. The proposed building will house the educational programs of the Kihei Charter School, an accredited school serving grades k-12. Students are admitted each year on a lottery basis with all students of all backgrounds and academic achievement levels eligible to attend the school.

Our current enrolment is 326 students, with over 100 on the waiting list. The Kihei Charter school consists of the K-12 Virtual Academy providing a blend of home and on-site instruction and activities, the Science, Technology, Engineering and Math (STEM) Academy, the only school in the state with a fully integrated STEM curriculum, and our successful High School Academy. Eighty percent of our graduates go directly on to higher education.

An Arts Academy for grades 7 & 8 is slated to open in August in partnership with Maui On-Stage and the Maui Academy of Performing Arts (MAPA).

Currently, the Charter school rents all facility space at a cost of over \$500,000 per year. We do not believe this is cost effective. We are on a month-to-month rental at our high school site located in an industrial area in North Kihei and could be asked to leave at any time.

The GIA grant would allow us to move forward on planning & design for the new building in a timely manner.

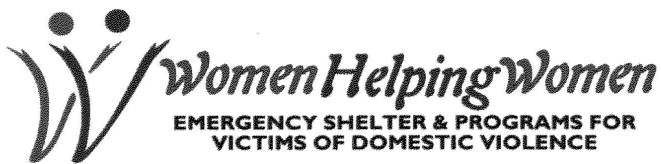
3/12/2008

Thank you for the opportunity to present our written testimony. If you have any questions I may be reached at 808-875-0700, or via e-mail at gzarro_kiheih@yahoo.com

Sincerely,

Gene Zarro
Chair, South Maui Learning Ohana
President, Kihei Charter School Board

=



Date: March 10, 2008

To: House Committee on Finance
Representative Marcus R. Oshiro, Chair
Representative Marilyn B. Lee, Vice Chair

Senate Committee on Ways and Means
Senator Rosalyn H. Baker, Chair
Senator Shan S. Tsutsui, Vice Chair

From: Stacey Moniz, Executive Director

RE: Grant in Aid: Women Helping Women Capital Request

Aloha and thank you for the opportunity to share briefly about Women Helping Women's request for \$400,000 to partially fund our Hale Lokomaikai Shelter Expansion Project. For quite a few years, Women Helping Women staff have recognized the need for substance abuse treatment options for the women who come into our emergency domestic violence shelter. These women are in physical danger from their partners, and they are struggling with drug and alcohol addiction. Women with children must leave them with family or in foster care in order to do residential treatment. Women Helping Women seeks to build an additional shelter building and Children's Center to support treatment options for our women.

Partnering with our neighbors, Aloha House and their sister program, Malama Family Recovery Center (a gender-specific treatment program for women), we will continue to do what we do best (provide safe shelter and the full range of essential services to victims of domestic violence) while Malama Family Recovery will provide the substance abuse treatment options for the women.

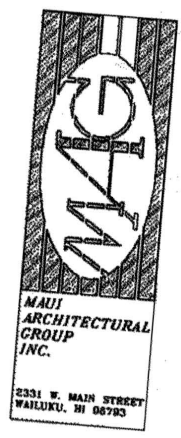
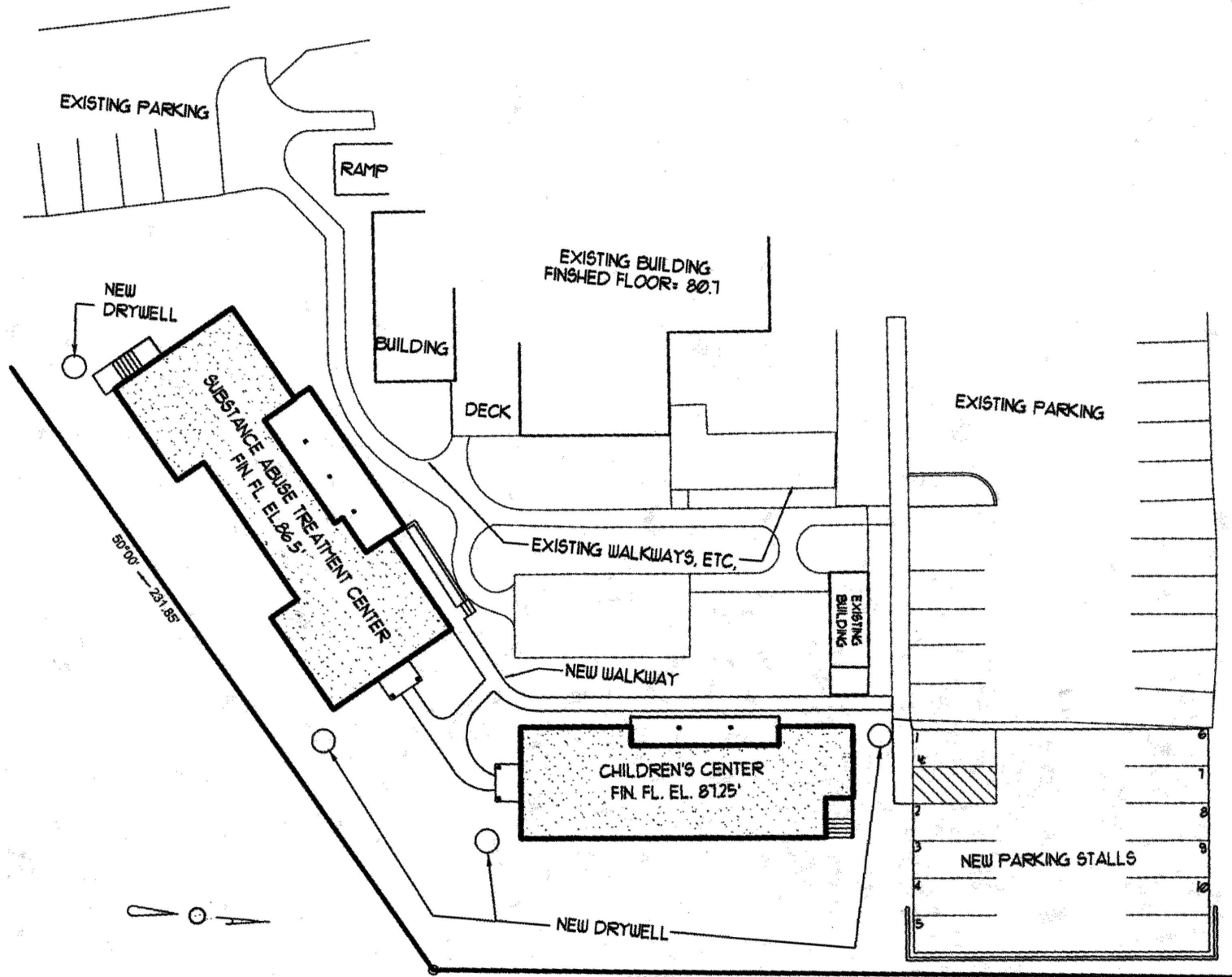
Included in our plan is a Children's Center to provide services to the children from both our shelters. Children who are uprooted from their homes, the rest of their families, their friends and sometimes their schools need special support. This Center will provide a safe place for the children to receive age-appropriate services while their families are staying at either of the shelters.

Recently we surveyed fifteen women staying in our emergency shelter. Eight of them had serious substance abuse issues. Four of them would have entered a treatment facility if we had it available. Women with substance abuse issues have greater needs and make greater demands of the time and resources of our shelter staff. If we were able to place the four women into the treatment center, the women in both shelters would receive better care, have their needs met and be more successful at obtaining their goals, whether that be to maintain their safety, their sobriety, or both.

I respectfully request that you fund this one-time capital request for \$400,000 to build our Hale Lokomaikai Shelter Expansion Project that will meet multiple needs of battered women and their children.

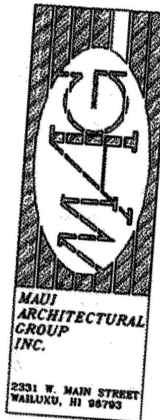
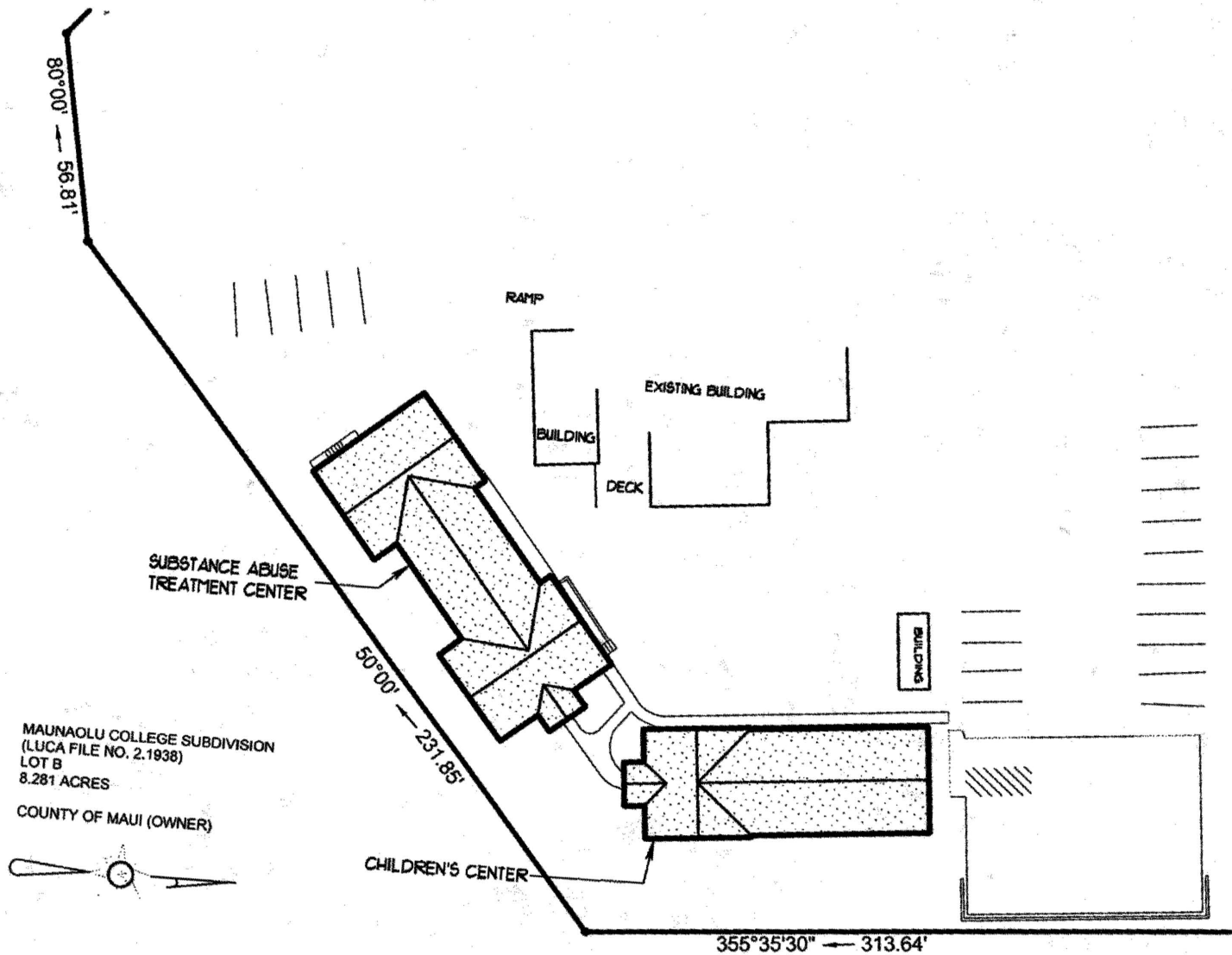
1935 Main Street
Suite 202
Wailuku, HI 96793

Phone: (808)242-6600
Fax: (808) 249-8147



PARTIAL SITE PLAN
1"=20'

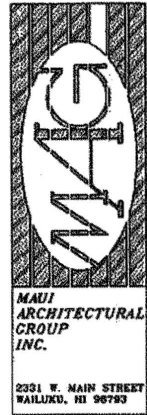
WOMEN HELPING WOMEN
MALUAOLU COLLEGE SUBDIVISION
HAMAKUAPONO, MAUI, HAWAII
T.M.K. (2)2-5-004.005 FOR
DEC. 15, 2005



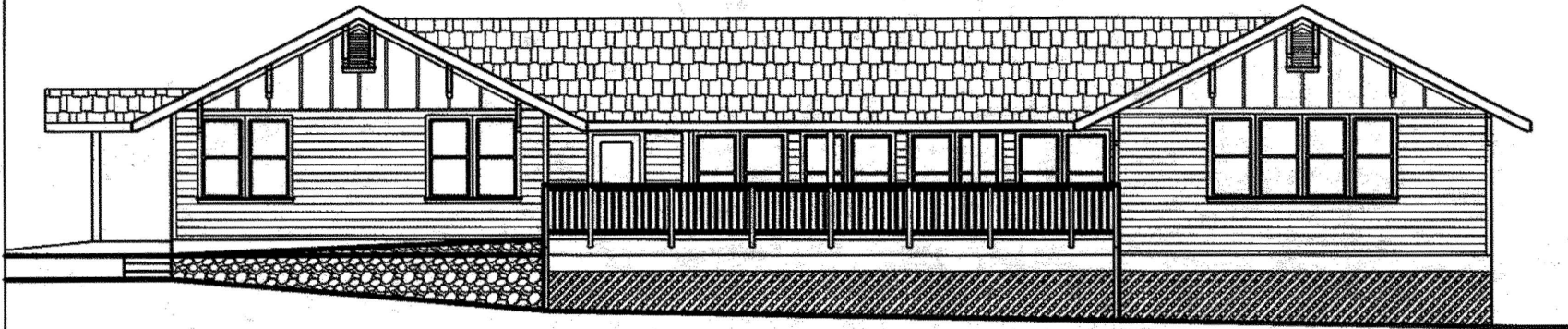
SITE PLAN
 1"=40'

WOMEN HELPING WOMEN
 MAUNAOLU COLLEGE SUBDIVISION
 HAMAHAUPOKO, MAUI, HAWAII
 T.M.K.(2)2-5-004-005 FOR.

DEC 15, 2005



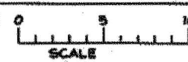
EAST ELEVATION



NORTH ELEVATION

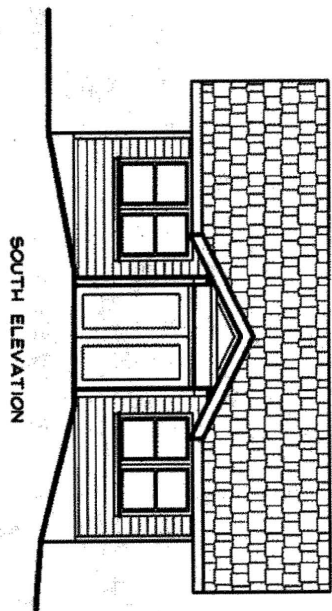
EXTERIOR ELEVATIONS

SUBSTANCE ABUSE TREATMENT CENTER

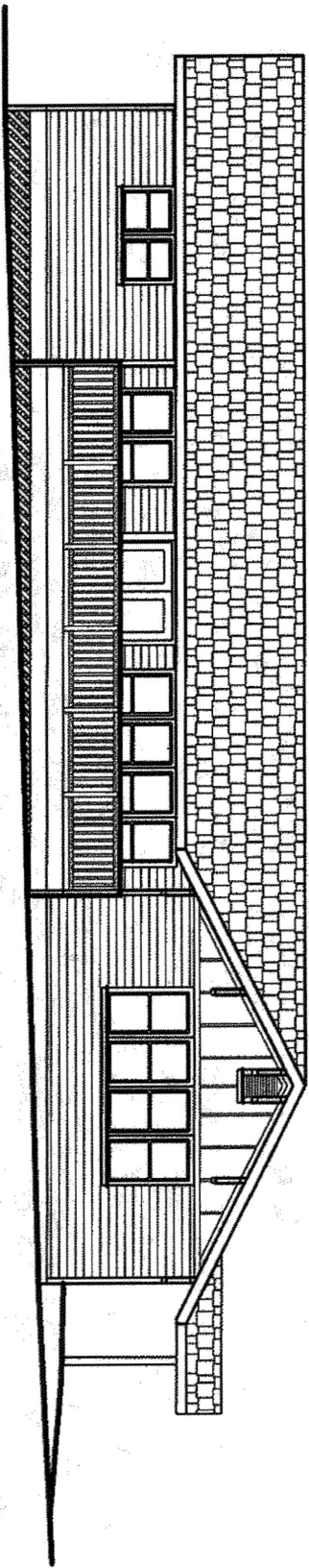


WOMEN HELPING WOMEN
MAUNAOLU COLLEGE SUBDIVISION
HAMAUAPOKO, MAUI, HAWAII
T.P.K.(2)2-5-004-005 POR.

DEC 15, 2005

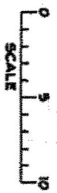


SOUTH ELEVATION



WEST ELEVATION

EXTERIOR ELEVATIONS
CHILDREN'S CENTER



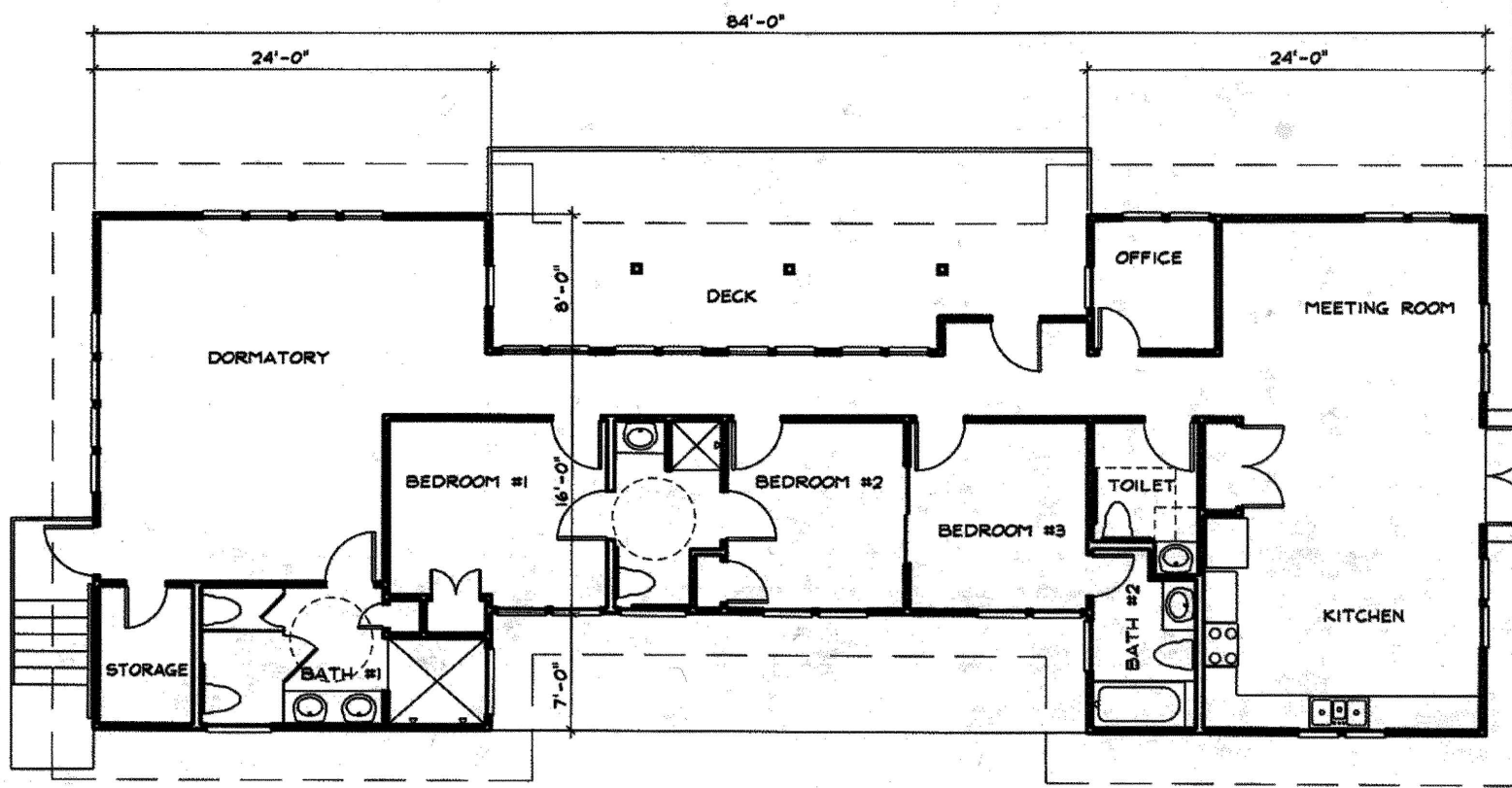
WOMEN HELPING WOMEN
 MAUNALOI COLLEGE SUBDIVISION
 HAWAIIAN COLLEGE, HAWAII, HAWAII
 T.H.K. (2)2-3-3-004-005 FOR.

DEC 19, 2008





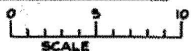
MAUI
ARCHITECTURAL
GROUP
INC.
2331 W. MAIN STREET
WAILUKU, HI 96793



FLOOR PLAN

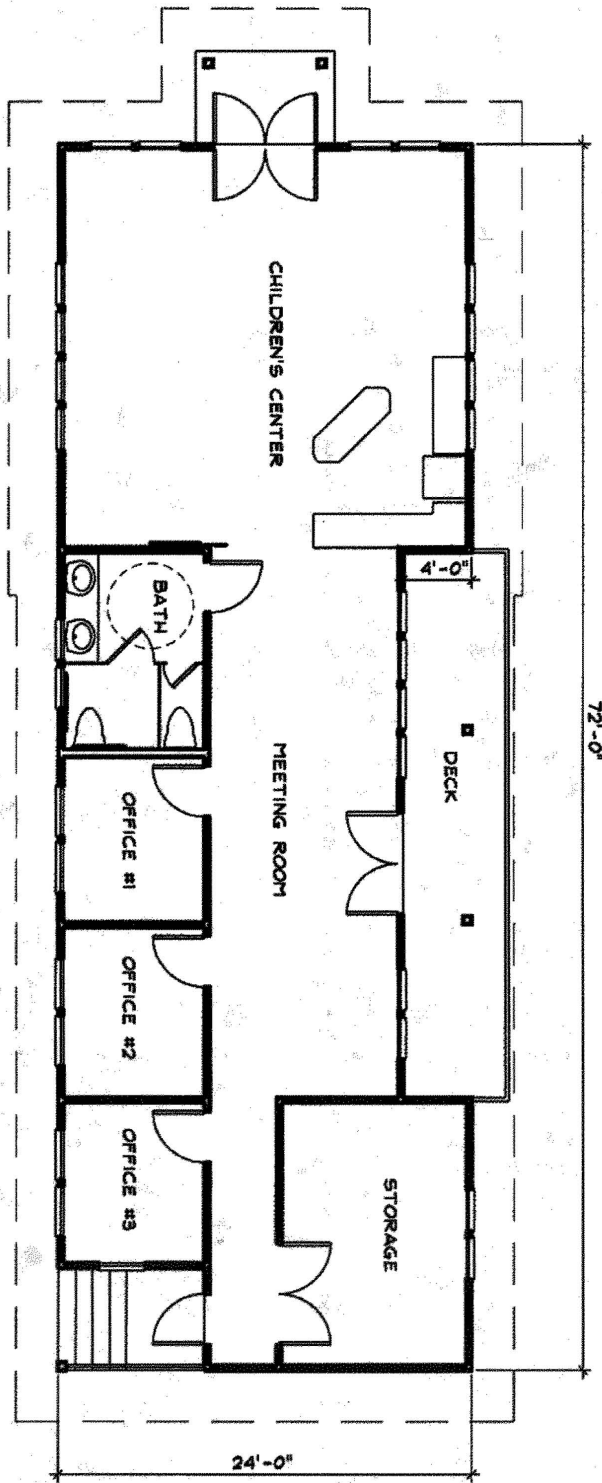



SUBSTANCE ABUSE TREATMENT CENTER

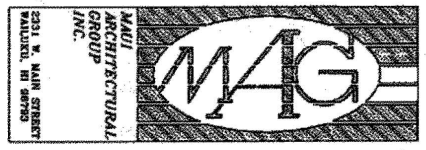


WOMEN HELPING WOMEN
MAUNAOLU COLLEGE SUBDIVISION
HAMAKUAPONO, MAUI, HAWAII
T.M.K.(2)2-5-004:005 P.O.R.

DEC. 15, 2005




FLOOR PLAN
 CHILDREN'S CENTER
 0 9 10
 SCALE



WOMEN HELPING WOMEN
 HAWAIIAN COLLEGE SUBDIVISION
 HAWAIIAN COLLEGE, MAUI, HAWAII
 T.N.K. (232-5-004)005 P.O.M.

DEC 15, 2008



Date: March 12, 2008

To: House Committee on Finance
Representative Marcus R. Oshiro, Chair
Representative Marilyn B. Lee, Vice Chair

Senate Committee on Ways and Means
Senator Rosalyn H. Baker, Chair
Senator Shan S. Tsutsui, Vice Chair

From: Stacey Moniz, Executive Director

RE: Grant in Aid: Women Helping Women West Maui

Aloha and thank you for the opportunity to share briefly about Women Helping Women's request for \$50,000 to partially fund our West Maui Domestic Violence Advocacy Center.

Women Helping Women, at the request of the West Maui community, asked for support from the State Legislature to open this center nearly two years ago. We began providing services at the center on July 1, 2006, on a part time basis - Mondays, Wednesdays and Fridays from 9 a.m. to 1 p.m. There is a huge and growing need for this center to be open full time, so we have asked the County of Maui to also financially support the important services we are providing to the West Side.

The West Side of Maui, which includes the towns of Oluwahu, Lahaina, Kaanapali, Napili, Kahana and Kapalua, is geographically isolated from the rest of the island by a two lane, "pali," or cliff side road that has been the site of hours-long closures for events ranging from car accidents to brush fires. Traffic from the west side can make the trip to Wailuku take over an hour and often even longer than that. Opening the Center has made it possible for residents of the west side to obtain critical domestic violence services without having to travel to central Maui.

Essential services offered by the West Maui Domestic Violence Advocacy Center include individual and group support, safety planning, full range of advocacy, assistance in the preparation of temporary restraining orders (TROs), support through the TRO process including accompaniment to court hearings, referrals and collaborations with other services including medical and legal needs, transportation, financial assistance, and systems advocacy that has included making system-wide changes that have had great benefit to the people of West Maui.

I respectfully request that you continue to fund the Women Helping Women West Maui Advocacy Center as we work to find ongoing funding to maintain this center on our own.

1935 Main Street
Suite 202
Wailuku, HI 96793

Phone: (808)242-6600
Fax: (808) 249-8147

TESTIMONY FOR GIA REQUEST - MECC

My name is Becky Woods and I'm the Executive Director of Maui Economic Concerns of the Community, which operates Maui's only homeless services facilities, the Ka Hale A Ke Ola Homeless Resource Center in Wailuku and Na Hale O Wainee Homeless Resource Center in Lahaina. Ka Hale A Ke Ola was the State of Hawaii's first HUD-approved Continuum of Care facility for homeless persons and since its' opening over 15 years ago has provided emergency shelter, transitional housing and a comprehensive range of supportive services to an average of 1,200 homeless persons per year, a majority of which are families with children. The development of this model project was funded through a combination of State, County and private grant sources...and the operation of the facility and provision of services has been supported by the State Homeless Stipend Program, the County of Maui Department of Housing & Human Concerns, grants from the HUD Supportive Housing Program and Emergency Shelter Grant Programs and various program fees. Ka Hale A Ke Ola has been recognized nationally as a "Best Practice" model for public-private partnerships that leverage local, State and Federal resources to effectively address homelessness at the community-level.

The funds requested from the State Legislature's Grant-in-Aid Program will help support an extensive rehabilitation project that is necessary to ensure the continued safe, efficient operation of Ka Hale A Ke Ola Homeless Resource Center. After 15 years of operating at full capacity, several basic long-term repair and replacement needs must be addressed in order to properly maintain this important public service facility. We are determined NOT to follow in the footsteps of the State's public housing projects, many of which have been allowed to deteriorate to the point where large numbers of badly-needed rental units are uninhabitable...and this rehabilitation project is a pro-active step to protect the huge investment that the State, County and Maui community has made in this facility to address homelessness on Maui. In your consideration of this request, please keep in mind that while Ka Hale A Ke Ola's State, Federal and County sources of support over the last 15

years have provided adequate funding for program expenses and basic ongoing operational and maintenance expenses, NONE of these sources provide funding to establish reserves that can support significant long-term repair/replacement expenses.

The total cost of the proposed project is \$668,848 and the amount we are requesting from the State GIA program is \$339,500. In addition to accomplishing several major repairs and replacements to the Ka Hale A Ke Ola facilities, this project will include the implementation of an innovative new Tenant Maintenance Training Program. The "STEP UP" tenant maintenance training program will provide homeless families participating in our emergency shelter and transitional housing programs, instruction and hands-on training in the proper care and maintenance of housing units. The purpose of the STEP UP program is two-fold....First, by teaching residents how to properly maintain their units, damage and wear-and-tear to the units will be reduced, ongoing and long-term maintenance expenses will go down and the overall living environment at Ka Hale A Ke Ola will improve... and ...This program will also give an important "step up" for residents moving into permanent housing by providing a reference source and a Good Tenant Certificate to facilitate their access to available housing opportunities. We are very excited about the potential of this pilot program...and both the Hawaii Public Housing Authority and County of Maui Department of Housing & Human Concerns have already expressed their interest and support for the STEP UP program as a model that can be replicated on a State-wide basis for all public housing projects and participants in TANF-supported Rental Assistance Programs.

This proposal is the logical continuation of the partnership between the State of Hawaii, Maui County and MECC that was established 15 years ago to address homelessness on Maui. Funding for the total project cost of \$668,848 is split between the State GIA Program, at \$339,500 and the County of Maui at \$320,000. I am pleased to report that this project HAS been included in the list of public facilities improvement projects selected for

funding through the County of Maui's CDBG Program (FY 2009), with formal approval from the County Council expected in the next month or two. The approval of this GIA request will re-affirm the State's commitment to a long-standing partnership that has provided the resources necessary to address the needs of Maui's homeless families for over 15 years. The importance of proper long-term maintenance programs for public service facilities that provide essential housing, health and social services to the most needy residents of our community, cannot be overstressed...and this proposal requests GIA funds to support repairs and replacements, as well as a proactive Tenant Maintenance Training Program that will help preserve and protect the substantial investment the State has already made to address homelessness on Maui.

Thank you for this opportunity...if you have any questions or would like additional clarification on this request, I'll be happy to respond now.