

Date: March 10, 2008

To: House Committee on Finance  
Representative Marcus R. Oshiro, Chair  
Representative Marilyn B. Lee, Vice Chair

Senate Committee on Ways and Means  
Senator Rosalyn H. Baker, Chair  
Senator Shan S. Tsutsui, Vice Chair

From: Stacey Moniz, Executive Director

RE: Grant in Aid: Women Helping Women Capital Request

Aloha and thank you for the opportunity to share briefly about Women Helping Women's request for \$400,000 to partially fund our Hale Lokomaikai Shelter Expansion Project. For quite a few years, Women Helping Women staff have recognized the need for substance abuse treatment options for the women who come into our emergency domestic violence shelter. These women are in physical danger from their partners, and they are struggling with drug and alcohol addiction. Women with children must leave them with family or in foster care in order to do residential treatment. Women Helping Women seeks to build an additional shelter building and Children's Center to support treatment options for our women.

Partnering with our neighbors, Aloha House and their sister program, Malama Family Recovery Center (a gender-specific treatment program for women), we will continue to do what we do best (provide safe shelter and the full range of essential services to victims of domestic violence) while Malama Family Recovery will provide the substance abuse treatment options for the women.

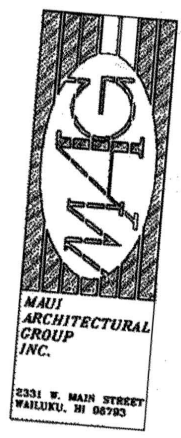
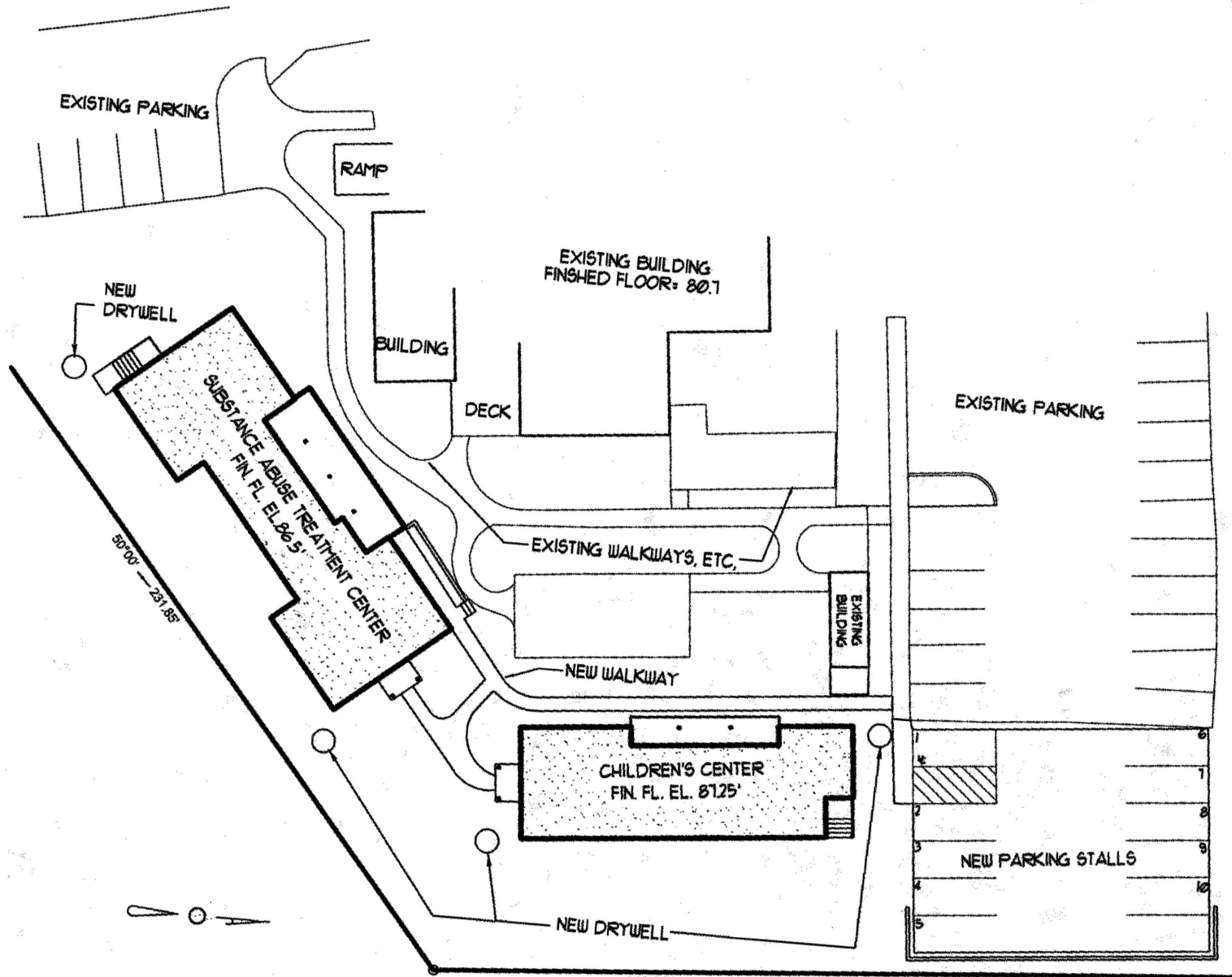
Included in our plan is a Children's Center to provide services to the children from both our shelters. Children who are uprooted from their homes, the rest of their families, their friends and sometimes their schools need special support. This Center will provide a safe place for the children to receive age-appropriate services while their families are staying at either of the shelters.

Recently we surveyed fifteen women staying in our emergency shelter. Eight of them had serious substance abuse issues. Four of them would have entered a treatment facility if we had it available. Women with substance abuse issues have greater needs and make greater demands of the time and resources of our shelter staff. If we were able to place the four women into the treatment center, the women in both shelters would receive better care, have their needs met and be more successful at obtaining their goals, whether that be to maintain their safety, their sobriety, or both.

I respectfully request that you fund this one-time capital request for \$400,000 to build our Hale Lokomaikai Shelter Expansion Project that will meet multiple needs of battered women and their children.

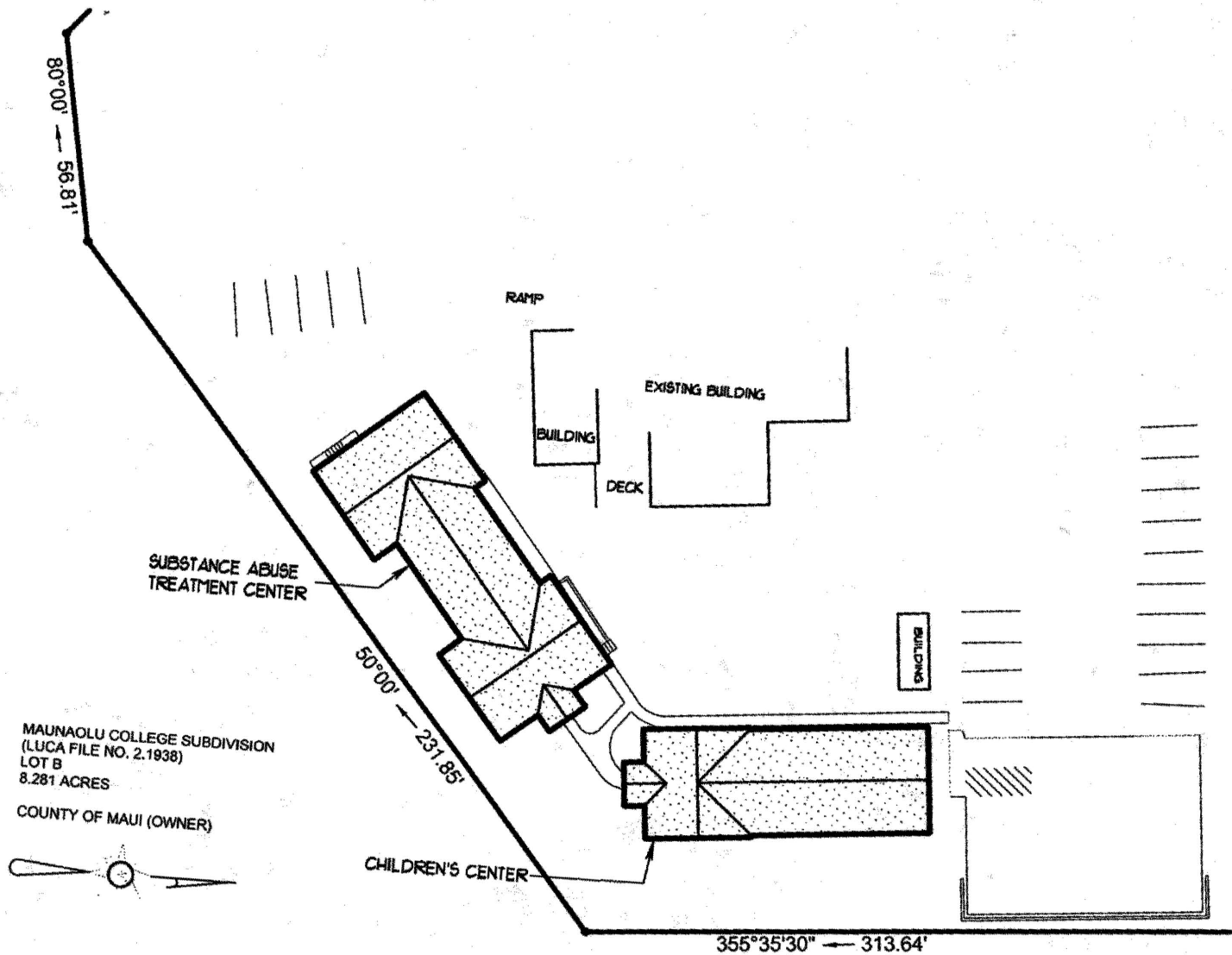
1935 Main Street  
Suite 202  
Wailuku, HI 96793

Phone: (808)242-6600  
Fax: (808) 249-8147

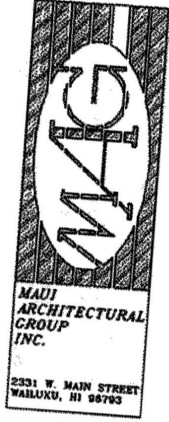


PARTIAL SITE PLAN  
1"=20'

WOMEN HELPING WOMEN  
MALUAOLU COLLEGE SUBDIVISION  
HAMAKUAPONO, MAUI, HAWAII  
T.M.K. (2)2-5-004.005 FOR  
DEC. 15, 2005



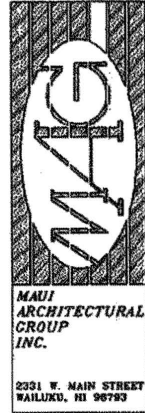
MAUNAOLU COLLEGE SUBDIVISION  
 (LUCA FILE NO. 2.1938)  
 LOT B  
 8.281 ACRES  
 COUNTY OF MAUI (OWNER)



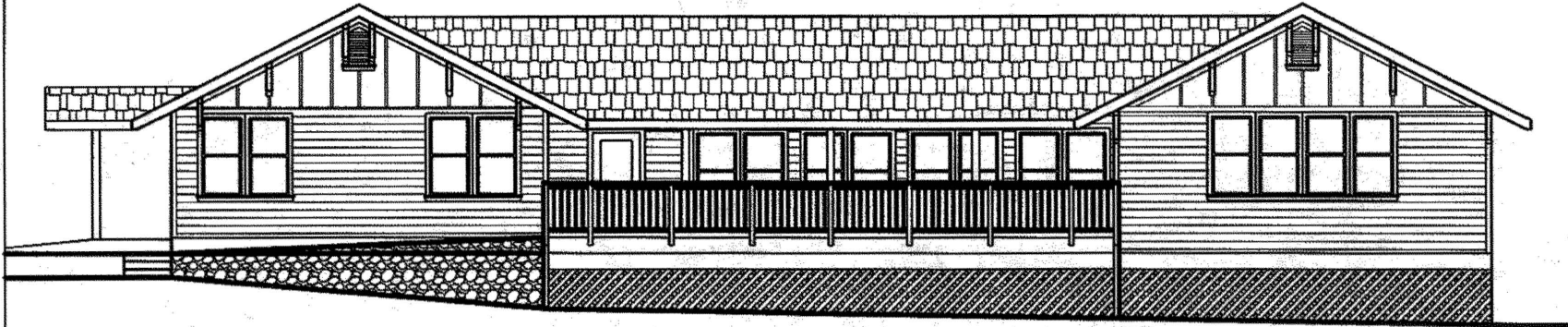
**SITE PLAN**  
 1"=40'

WOMEN HELPING WOMEN  
 MAUNAOLU COLLEGE SUBDIVISION  
 HAMAHAUPOKO, MAUI, HAWAII  
 T.M.K. (2)2-5-004-005 FOR.

DEC 15, 2005



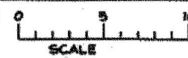
EAST ELEVATION



NORTH ELEVATION

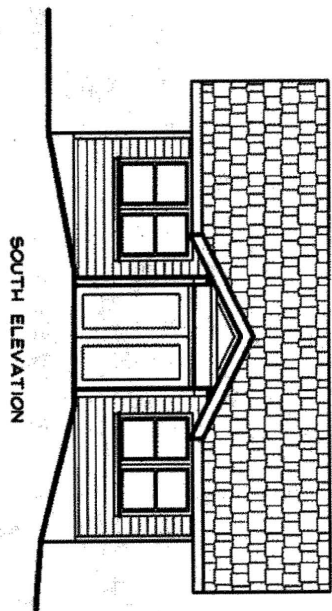
## EXTERIOR ELEVATIONS

SUBSTANCE ABUSE TREATMENT CENTER

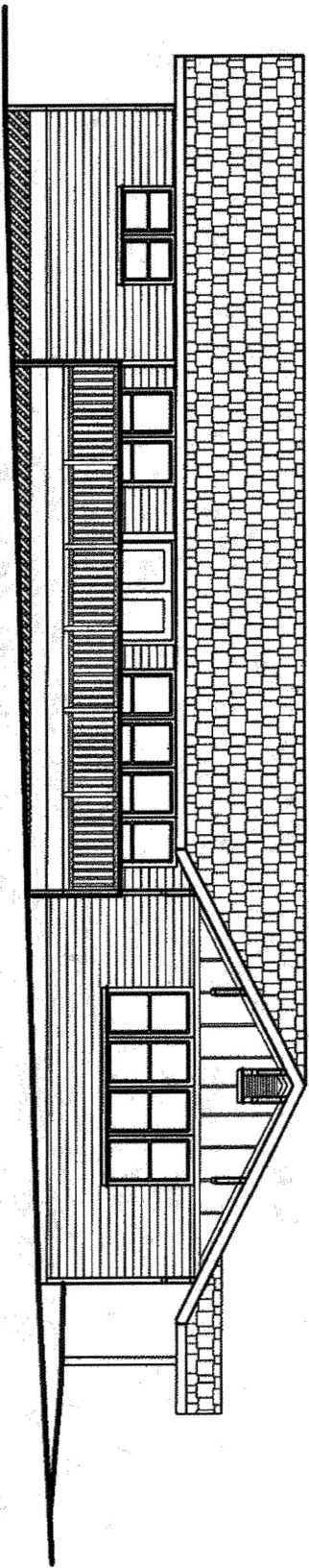


WOMEN HELPING WOMEN  
MAUNAOLU COLLEGE SUBDIVISION  
HAMAUAPOKO, MAUI, HAWAII  
T.P.K.(2)2-5-004-005 POR.

DEC 15, 2005

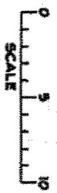


SOUTH ELEVATION



WEST ELEVATION

**EXTERIOR ELEVATIONS**  
 CHILDREN'S CENTER



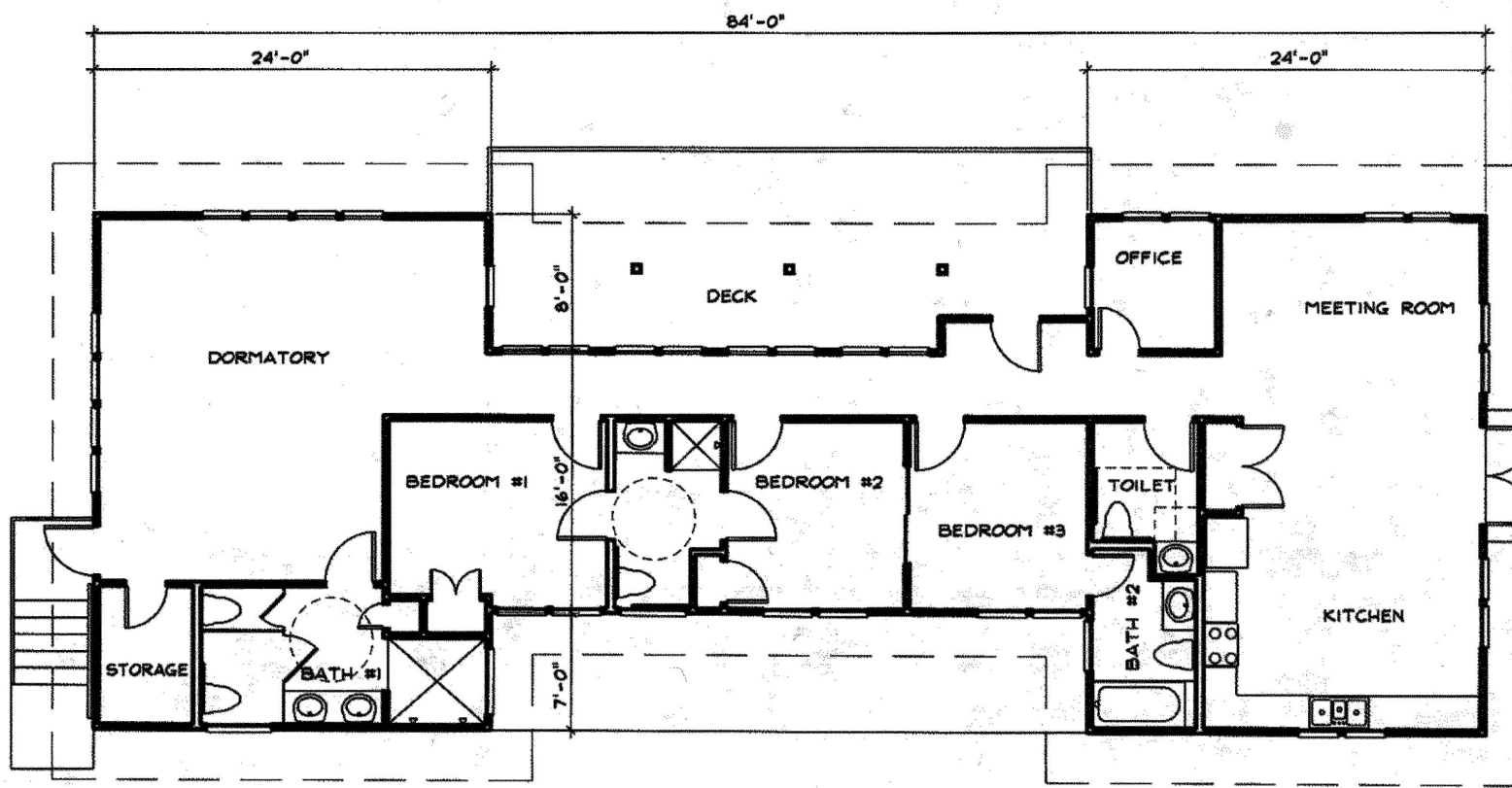
WOMEN HELPING WOMEN  
 MAUNALOI COLLEGE SUBDIVISION  
 MAUNALOI, HAWAII  
 T.H.K. (2)2-3-004005 FOR.

DEC 19, 2008





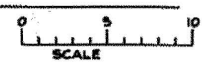
MAUI  
ARCHITECTURAL  
GROUP  
INC.  
2331 W. MAIN STREET  
WAILUKU, HI 96793



### FLOOR PLAN

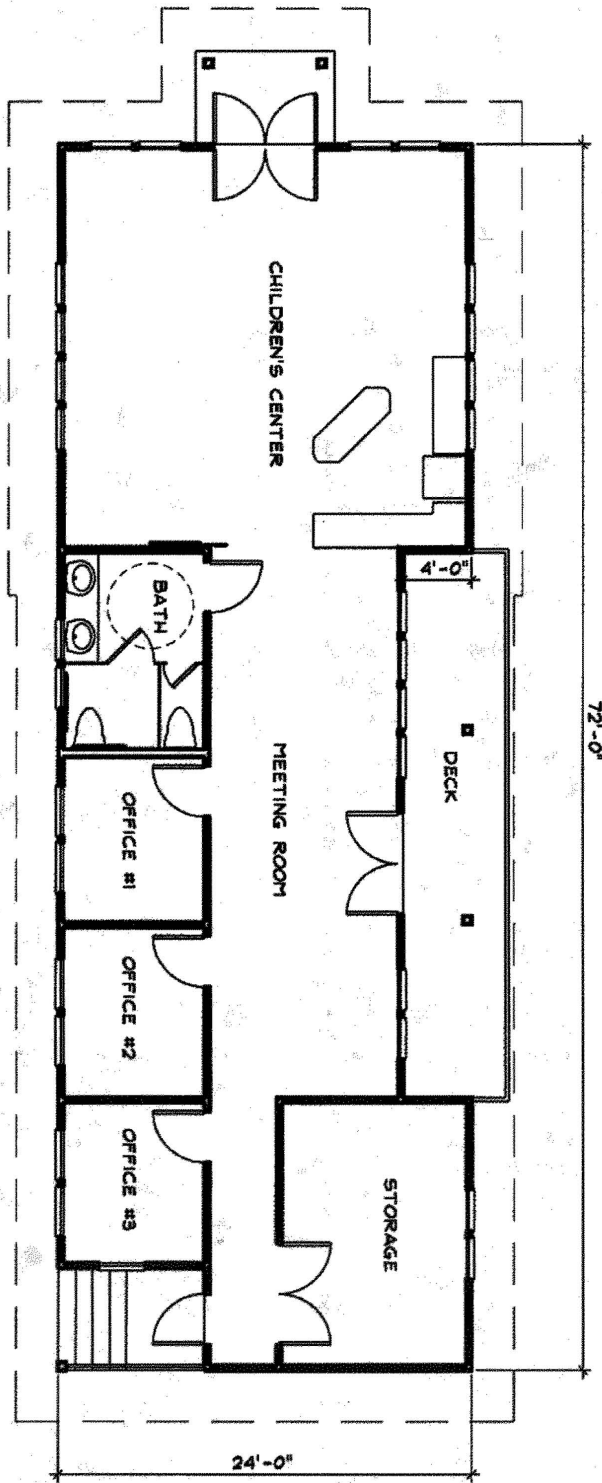


SUBSTANCE ABUSE TREATMENT CENTER



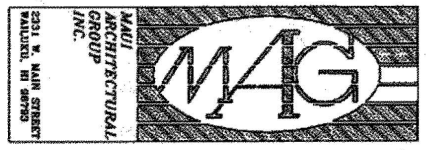
WOMEN HELPING WOMEN  
MAUNAOLU COLLEGE SUBDIVISION  
HAMAKUAPONO, MAUI, HAWAII  
T.M.K.(2)2-5-004:005 P.O.R.

DEC. 15, 2005



**FLOOR PLAN**  
 CHILDREN'S CENTER

0 9 10  
 SCALE



**WOMEN HELPING WOMEN**  
 MAHAKOULU COLLEGE SUBDIVISION  
 MAHAKOULU, MAUI, HAWAII  
 T.N.K. (232-5-004)005 P.O.M.

DEC 15, 2008



Date: March 12, 2008

To: House Committee on Finance  
Representative Marcus R. Oshiro, Chair  
Representative Marilyn B. Lee, Vice Chair

Senate Committee on Ways and Means  
Senator Rosalyn H. Baker, Chair  
Senator Shan S. Tsutsui, Vice Chair

From: Stacey Moniz, Executive Director

RE: Grant in Aid: Women Helping Women West Maui

Aloha and thank you for the opportunity to share briefly about Women Helping Women's request for \$50,000 to partially fund our West Maui Domestic Violence Advocacy Center.

Women Helping Women, at the request of the West Maui community, asked for support from the State Legislature to open this center nearly two years ago. We began providing services at the center on July 1, 2006, on a part time basis - Mondays, Wednesdays and Fridays from 9 a.m. to 1 p.m. There is a huge and growing need for this center to be open full time, so we have asked the County of Maui to also financially support the important services we are providing to the West Side.

The West Side of Maui, which includes the towns of Oluwalu, Lahaina, Kaanapali, Napili, Kahana and Kapalua, is geographically isolated from the rest of the island by a two lane, "pali," or cliff side road that has been the site of hours-long closures for events ranging from car accidents to brush fires. Traffic from the west side can make the trip to Wailuku take over an hour and often even longer than that. Opening the Center has made it possible for residents of the west side to obtain critical domestic violence services without having to travel to central Maui.

Essential services offered by the West Maui Domestic Violence Advocacy Center include individual and group support, safety planning, full range of advocacy, assistance in the preparation of temporary restraining orders (TROs), support through the TRO process including accompaniment to court hearings, referrals and collaborations with other services including medical and legal needs, transportation, financial assistance, and systems advocacy that has included making system-wide changes that have had great benefit to the people of West Maui.

I respectfully request that you continue to fund the Women Helping Women West Maui Advocacy Center as we work to find ongoing funding to maintain this center on our own.

1935 Main Street  
Suite 202  
Wailuku, HI 96793

Phone: (808)242-6600  
Fax: (808) 249-8147



## **TESTIMONY FOR GIA REQUEST - MECC**

My name is Becky Woods and I'm the Executive Director of Maui Economic Concerns of the Community, which operates Maui's only homeless services facilities, the Ka Hale A Ke Ola Homeless Resource Center in Wailuku and Na Hale O Wainee Homeless Resource Center in Lahaina. Ka Hale A Ke Ola was the State of Hawaii's first HUD-approved Continuum of Care facility for homeless persons and since its' opening over 15 years ago has provided emergency shelter, transitional housing and a comprehensive range of supportive services to an average of 1,200 homeless persons per year, a majority of which are families with children. The development of this model project was funded through a combination of State, County and private grant sources...and the operation of the facility and provision of services has been supported by the State Homeless Stipend Program, the County of Maui Department of Housing & Human Concerns, grants from the HUD Supportive Housing Program and Emergency Shelter Grant Programs and various program fees. Ka Hale A Ke Ola has been recognized nationally as a "Best Practice" model for public-private partnerships that leverage local, State and Federal resources to effectively address homelessness at the community-level.

The funds requested from the State Legislature's Grant-in-Aid Program will help support an extensive rehabilitation project that is necessary to ensure the continued safe, efficient operation of Ka Hale A Ke Ola Homeless Resource Center. After 15 years of operating at full capacity, several basic long-term repair and replacement needs must be addressed in order to properly maintain this important public service facility. We are determined NOT to follow in the footsteps of the State's public housing projects, many of which have been allowed to deteriorate to the point where large numbers of badly-needed rental units are uninhabitable...and this rehabilitation project is a pro-active step to protect the huge investment that the State, County and Maui community has made in this facility to address homelessness on Maui. In your consideration of this request, please keep in mind that while Ka Hale A Ke Ola's State, Federal and County sources of support over the last 15

years have provided adequate funding for program expenses and basic ongoing operational and maintenance expenses, NONE of these sources provide funding to establish reserves that can support significant long-term repair/replacement expenses.

The total cost of the proposed project is \$668,848 and the amount we are requesting from the State GIA program is \$339,500. In addition to accomplishing several major repairs and replacements to the Ka Hale A Ke Ola facilities, this project will include the implementation of an innovative new Tenant Maintenance Training Program. The "STEP UP" tenant maintenance training program will provide homeless families participating in our emergency shelter and transitional housing programs, instruction and hands-on training in the proper care and maintenance of housing units. The purpose of the STEP UP program is two-fold....First, by teaching residents how to properly maintain their units, damage and wear-and-tear to the units will be reduced, ongoing and long-term maintenance expenses will go down and the overall living environment at Ka Hale A Ke Ola will improve... and ...This program will also give an important "step up" for residents moving into permanent housing by providing a reference source and a Good Tenant Certificate to facilitate their access to available housing opportunities. We are very excited about the potential of this pilot program...and both the Hawaii Public Housing Authority and County of Maui Department of Housing & Human Concerns have already expressed their interest and support for the STEP UP program as a model that can be replicated on a State-wide basis for all public housing projects and participants in TANF-supported Rental Assistance Programs.

This proposal is the logical continuation of the partnership between the State of Hawaii, Maui County and MECC that was established 15 years ago to address homelessness on Maui. Funding for the total project cost of \$668,848 is split between the State GIA Program, at \$339,500 and the County of Maui at \$320,000. I am pleased to report that this project HAS been included in the list of public facilities improvement projects selected for

funding through the County of Maui's CDBG Program (FY 2009), with formal approval from the County Council expected in the next month or two. The approval of this GIA request will re-affirm the State's commitment to a long-standing partnership that has provided the resources necessary to address the needs of Maui's homeless families for over 15 years. The importance of proper long-term maintenance programs for public service facilities that provide essential housing, health and social services to the most needy residents of our community, cannot be overstressed...and this proposal requests GIA funds to support repairs and replacements, as well as a proactive Tenant Maintenance Training Program that will help preserve and protect the substantial investment the State has already made to address homelessness on Maui.

Thank you for this opportunity...if you have any questions or would like additional clarification on this request, I'll be happy to respond now.