



PAPAKOLEA
COMMUNITY DEVELOPMENT CORPORATION

2150 Tantalus Drive
Honolulu, HI 96813

Ph: 808.520.8998
Fax: 808.520.8995

www.papakolea.org

Board of
Directors

Harold Johnston
President

Charlotte
Kaluna
Vice-President

Marlene Keawe
Sec./ Treasurer

Annie AuHoon

Mike Fukuda

Li Garcia-
Ballard

Denise Ka'a'a

Building Hope
Impacting Lives

PAPAKOLEA COMMUNITY DEVELOPMENT CORPORATION 2008-2009 GIA REQUEST

PAPAKOLEA COMMUNITY DEVELOPMENT CORPORATION (PCDC):

PCDC was formed in 1999 to improve the economic, educational, cultural and spiritual well-being of the community. PCDC accomplishes this by providing a full range of comprehensive services at the Papakolea Community Center and Park. PCDC assumed management control of the center under a 20-year agreement with the Department of Hawaiian Home Lands in 2003.

OVERVIEW: PAPAKOLEA COMMUNITY CENTER AND PARK

The Papakolea Community Center and Park houses a combination of community based programs such as weight management class (PILI Ohana), an afterschool literacy program (Ku `Ike), health education classes (Nou Ke Ola), traditional healing services (na Lomilomi o Papakolea), self-defense classes (Team Papakolea Ju-jitsu), hula (3 halau, 1 studio), organized sports practices (volleyball, basketball, Brazilian soccer).

We support local service providers offering an early childhood education program (Tutu & Me), kupuna program (Alu Like), and two church services (Jesus Christ Cornerstone of Waianae and Hawaii Grace Korean Church).

Our center is highly utilized and has a positive impact not just on our community but the community at large.

HOURS OF OPERATION:

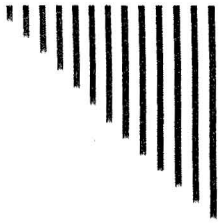
The Papakolea Community Center and Park is open 7 days a week from 6:30 am to 10 pm. Facility utilization has steadily increased at a rate of 8-12% per year. In 2007, the Center provided 948 classes for a total of 3,223 program hours with an average of 38 participants per class/activity.

PAPAKOLEA COMMUNITY CENTER:

The Papakolea Community Technology Center (CTC) and the Papakolea Wellness Office are used to conduct computer classes, small business training, college and career development sessions, an after-school program and health prevention and education classes. Beginning February 2008 by way of a partnership with Queen Liliuokalani Children's Center and `Olelo Community TV, the CTC will be used to train residents in television production and other forms of multimedia.

PCDC GIA Operating Grant Request History:

GIA	Amount	GIA Operating grant enables us to provide:
2006	\$250K	<ul style="list-style-type: none"> Increased programs for residents Increased community participation Facility maintenance Facility staff a resource to residents Additional park staff
2007	\$249K Receipt Pending	<ul style="list-style-type: none"> 2nd Place Chaminade Hogan Business Plan Competition Increase programs for residents Increased park grounds use Increased facility utilization
2008	\$185,864 Requesting	<ul style="list-style-type: none"> Address park sustainability Conduct community conversations to expand facilities Department of Hawaiian Homelands Regional planning



ONE-STOP FULL SERVICE

The Papakōlea Center and Park is a vibrant community resource for all O'ahu residents. It provides access to health, educational, human, high-technology and economic development services. Various community organizations use the Center's facilities for board and membership meetings and special functions. Currently, the Center houses four community based non-profit entities that collaborate to provide a full-range of programs and services to Papakōlea, Kewalo and Kalawahine residents and community at large.

The Papakolea Community Center and Park houses a combination of community based programs such as weight management class (PILI Ohana), an afterschool literacy program (Ku`Ike), health education classes (Nou Ke Ola), traditional healing services (na Lomilomi o Papakolea), self-defense classes (Team Papakolea Ju-jitsu), hula (3 halau, 1 studio), organized sports practices (volleyball, basketball, Brazilian soccer).



PAPAKŌLEA COMMUNITY DEVELOPMENT CORPORATION

PCDC was formed in 1999 to improve the economic, educational, cultural and spiritual well-being of the community. PCDC accomplishes this by providing a full range of comprehensive services at the Papakolea Community Center and Park. PCDC assumed management control of the center under a 20-year agreement with the Department of Hawaiian Home Lands in 2003.



KULA NO NA PO'E HAWAII

Kula no na Po'e Hawai'i (KNNPH) is a 501(c)3 community-based non-profit organization with a mission dedicated to promoting multi-generational learning opportunities that instill cultural diversity and sensitivity. For the past 15 years, KNNPH has been very successful in addressing the educational and health needs of the community.





"I know a place."

Papakōlea

Nestled on a lush hilltop of the Ko'olau mountains stands the homestead community of Papakōlea. Papakōlea is a close-knit generation of families whose strengths are based on the mother culture of its people, community history, and civic vitality.

One blessing to this land base and its residents is the Papakōlea Full Service Community Center. Great strides have been made with the ongoing improvement to facilities and expansion of its wide variety of programs and services that continue to broaden the personal and professional horizons of all who partake.

Come visit the Center and see for yourself. Your participation in and contribution to its ongoing purpose will further empower community residents, young and old, to individual and collective betterment.

Join us in serving Papakōlea, Kewalo and Kalawahine.

I'd like to become a volunteer.

I'd like to make a donation.

Papakōlea Community
Development Corporation

Kula No Na Po'e Hawai'i

Name: _____

Address: _____

Phone: AM _____ PM _____

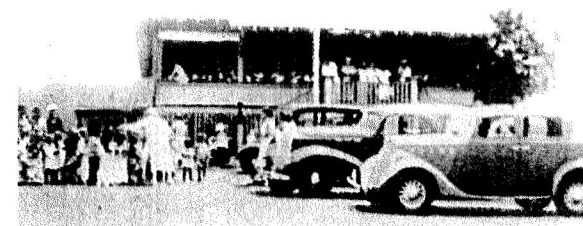
Email: _____

Donation: \$ _____

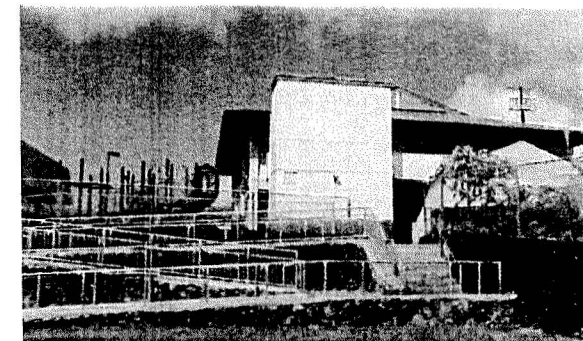
Total Enclosed: \$ _____

Please mail this form and your check to:

PAPAKŌLEA COMMUNITY CENTER & PARK
2150 Tantalus Drive
Honolulu, HI 96813



PAPAKŌLEA COMMUNITY CENTER AND PARK



*Building Hope,
Impacting Lives*

Phone 520.8998, fax 520.8995 or visit
our website at www.papakolea.org