



Maui Regional Public Safety Complex

for

Department of Public Safety

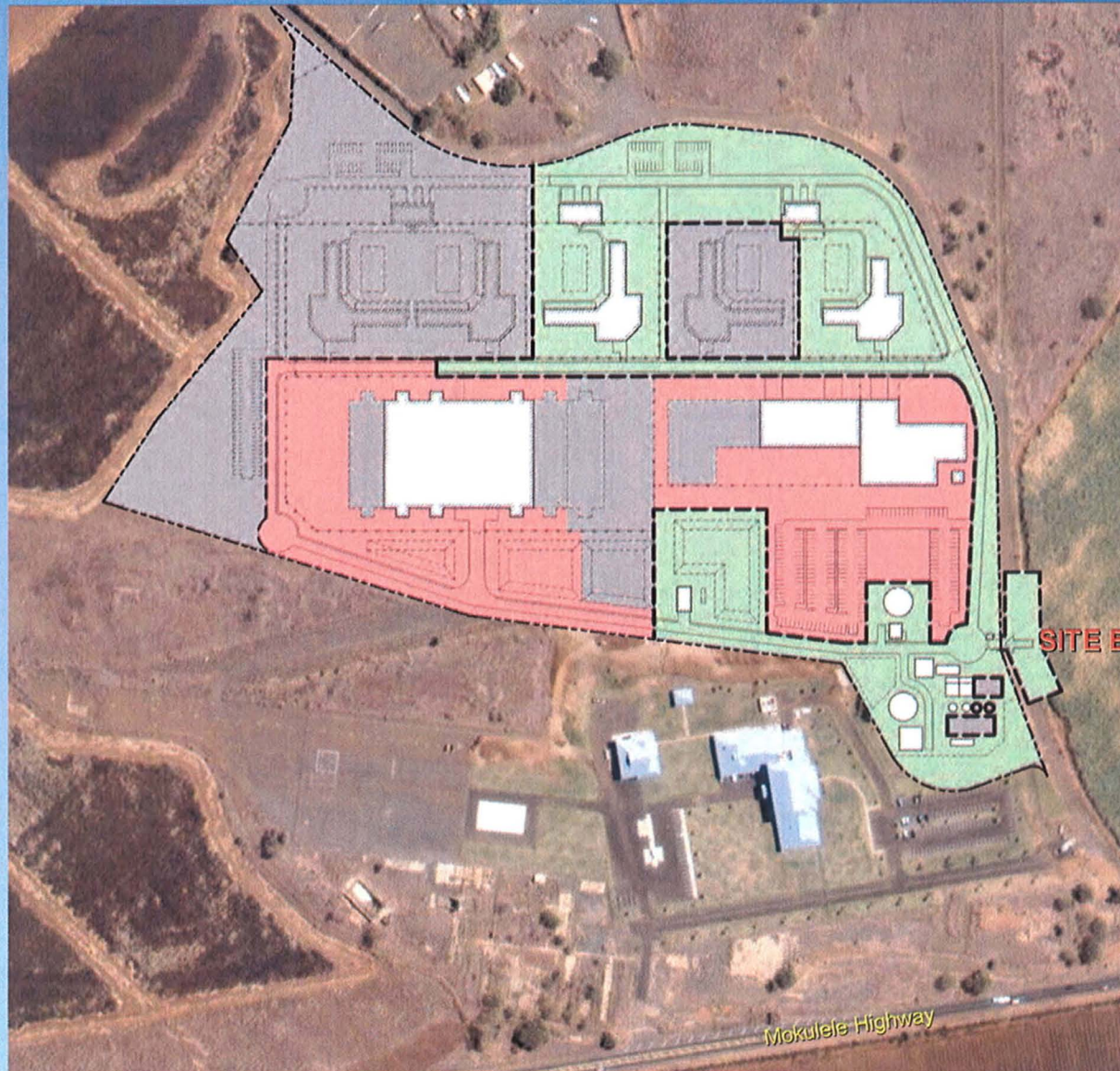
State of Hawaii



01/31/2008

MAUI REGIONAL PUBLIC SAFETY COMPLEX

ORIENTATION



SITE ENTRY



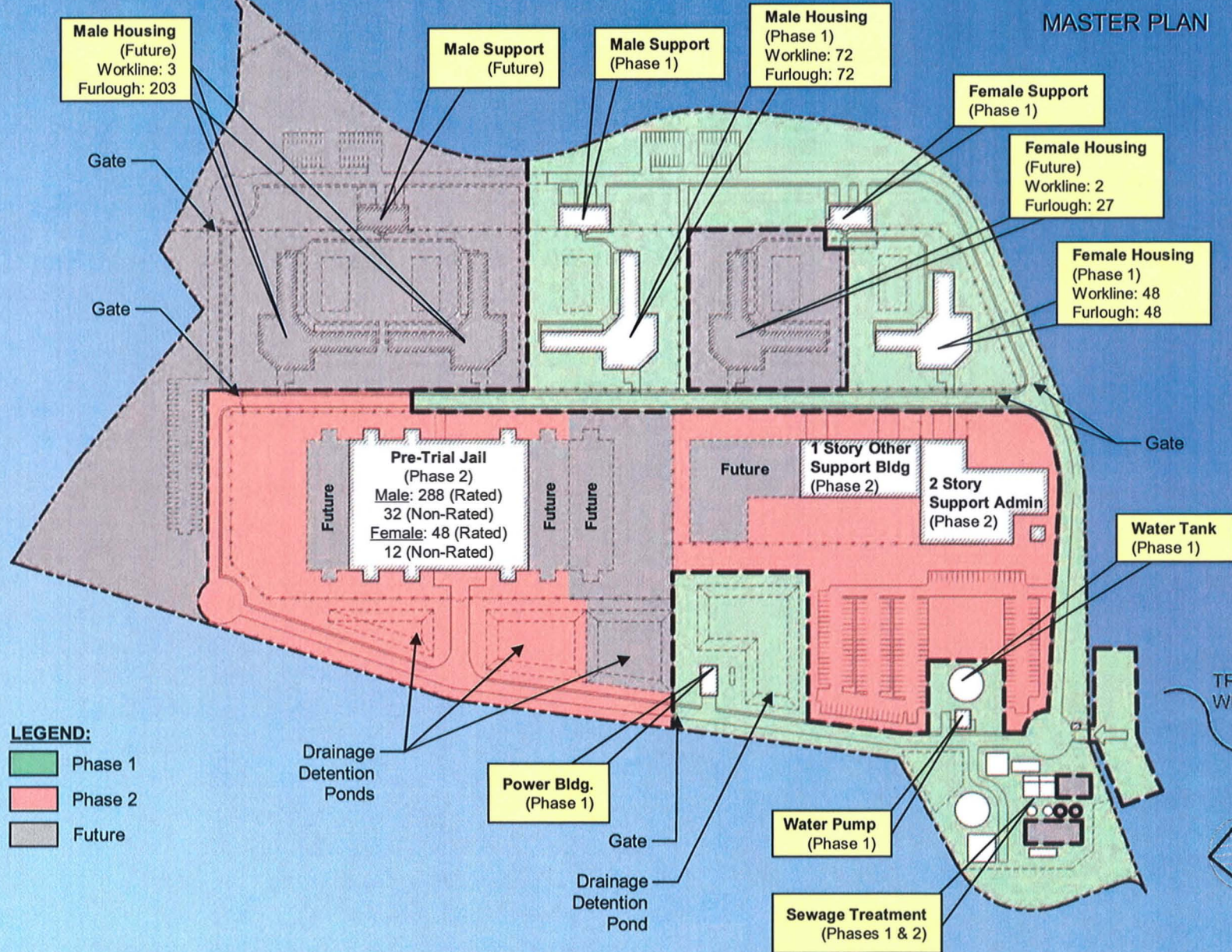
TRADE WINDS



MAUI REGIONAL PUBLIC SAFETY COMPLEX



MASTER PLAN



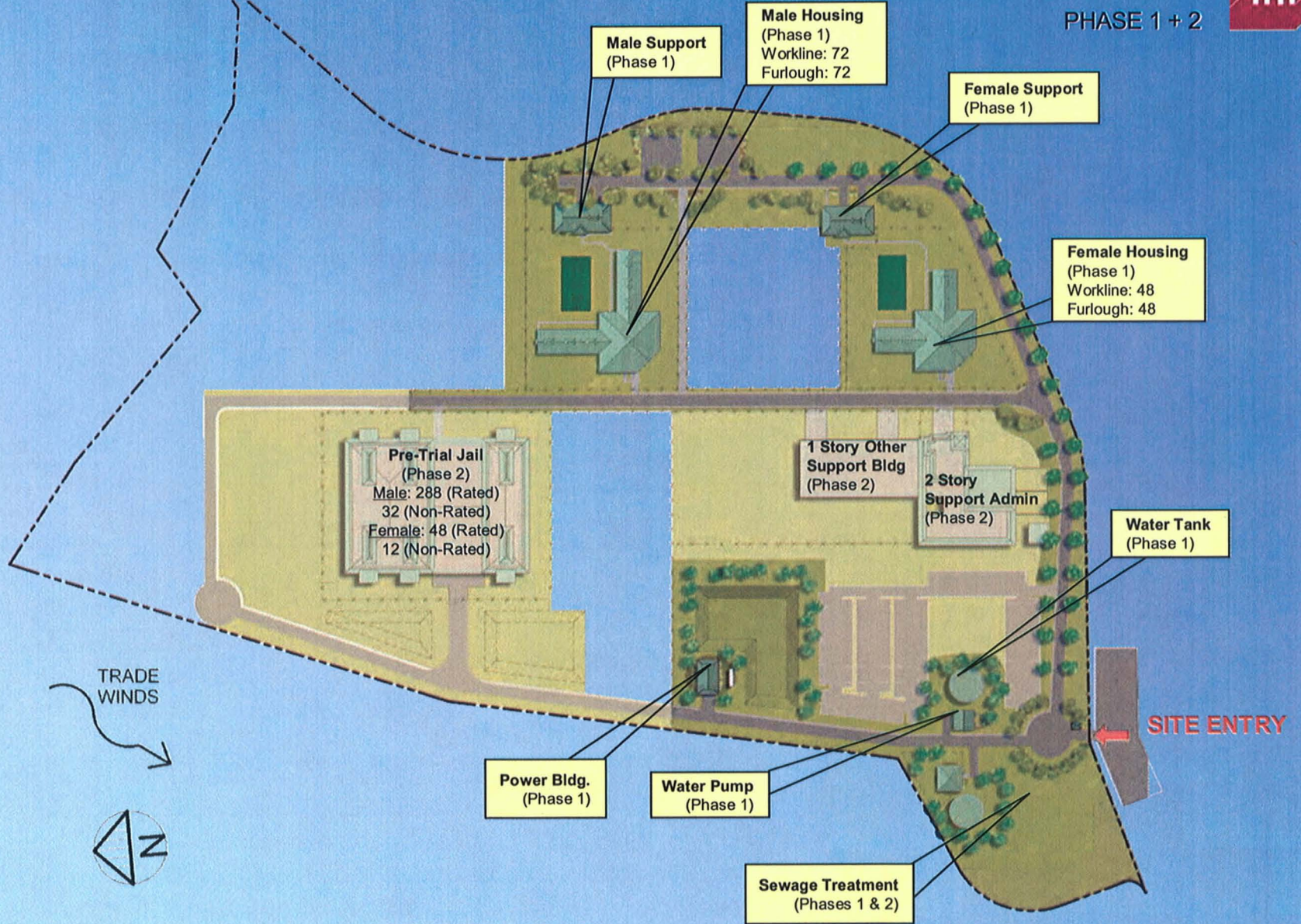
LEGEND:

- Phase 1
- Phase 2
- Future

MAUI REGIONAL PUBLIC SAFETY COMPLEX

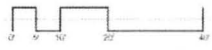
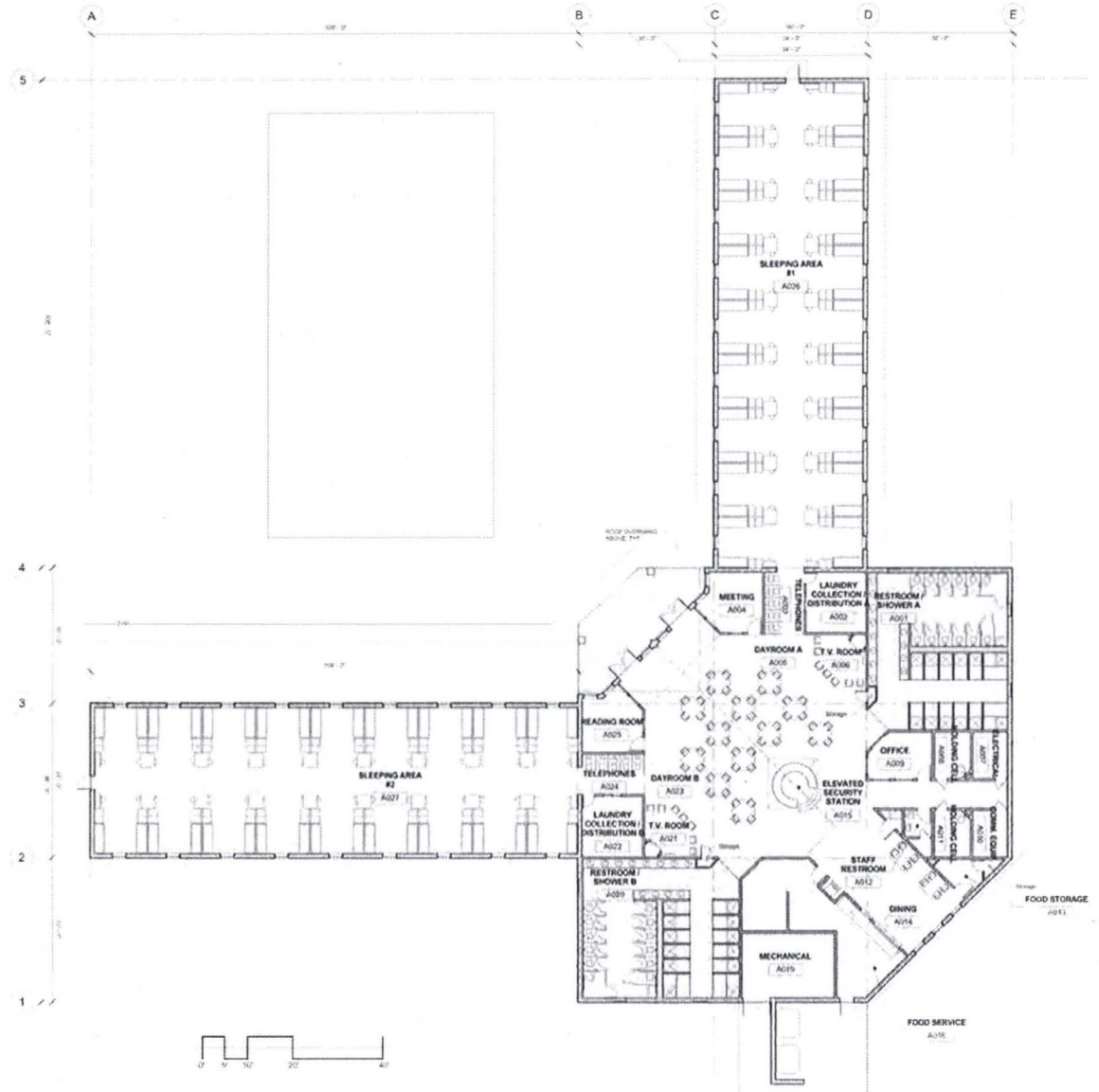


PHASE 1 + 2



MAUI REGIONAL PUBLIC SAFETY COMPLEX

TYPICAL HOUSING MODULE



MAUI REGIONAL PUBLIC SAFETY COMPLEX

TYPICAL HOUSING MODULE



NORTH ELEVATION



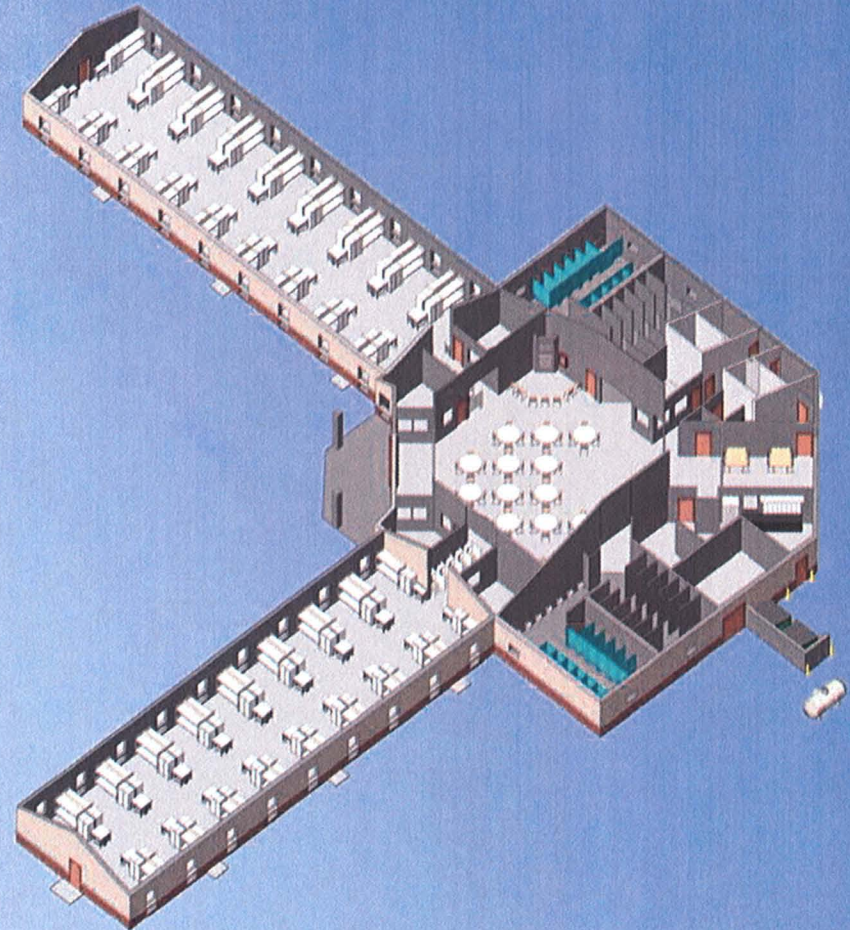
WEST ELEVATION



SOUTH ELEVATION



EAST ELEVATION



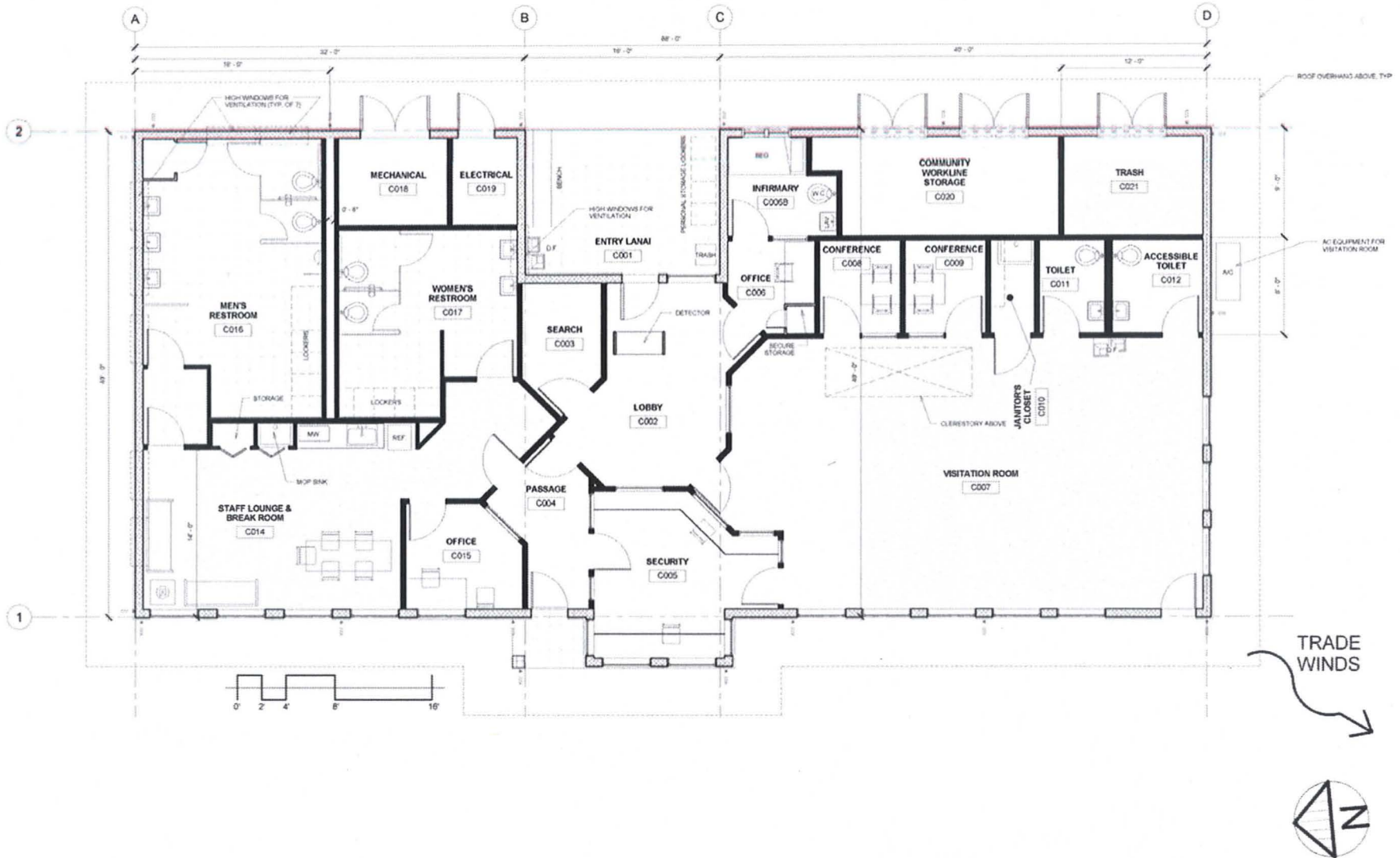
MAUI REGIONAL PUBLIC SAFETY COMPLEX

TYPICAL INTERIOR VIEW of HOUSING MODULE SLEEPING AREA



MAUI REGIONAL PUBLIC SAFETY COMPLEX

TYPICAL HOUSING SUP PORT



MAUI REGIONAL PUBLIC SAFETY COMPLEX

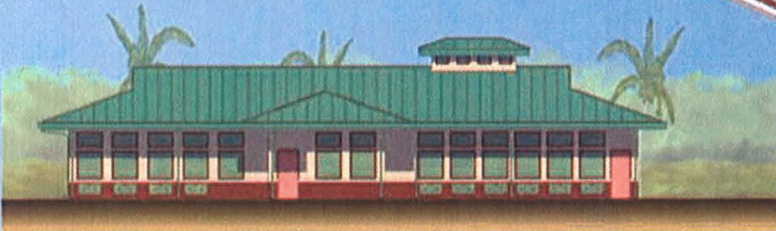
TYPICAL HOUSING SUPPORT



EAST ELEVATION



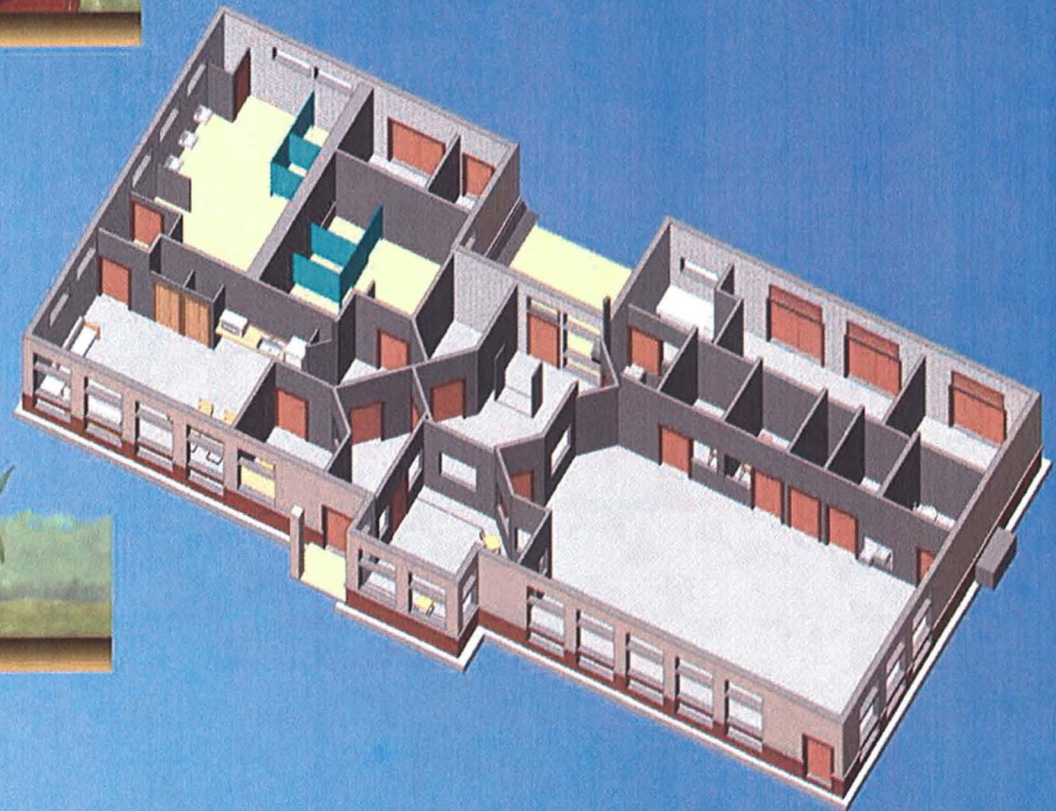
NORTH ELEVATION



WEST ELEVATION



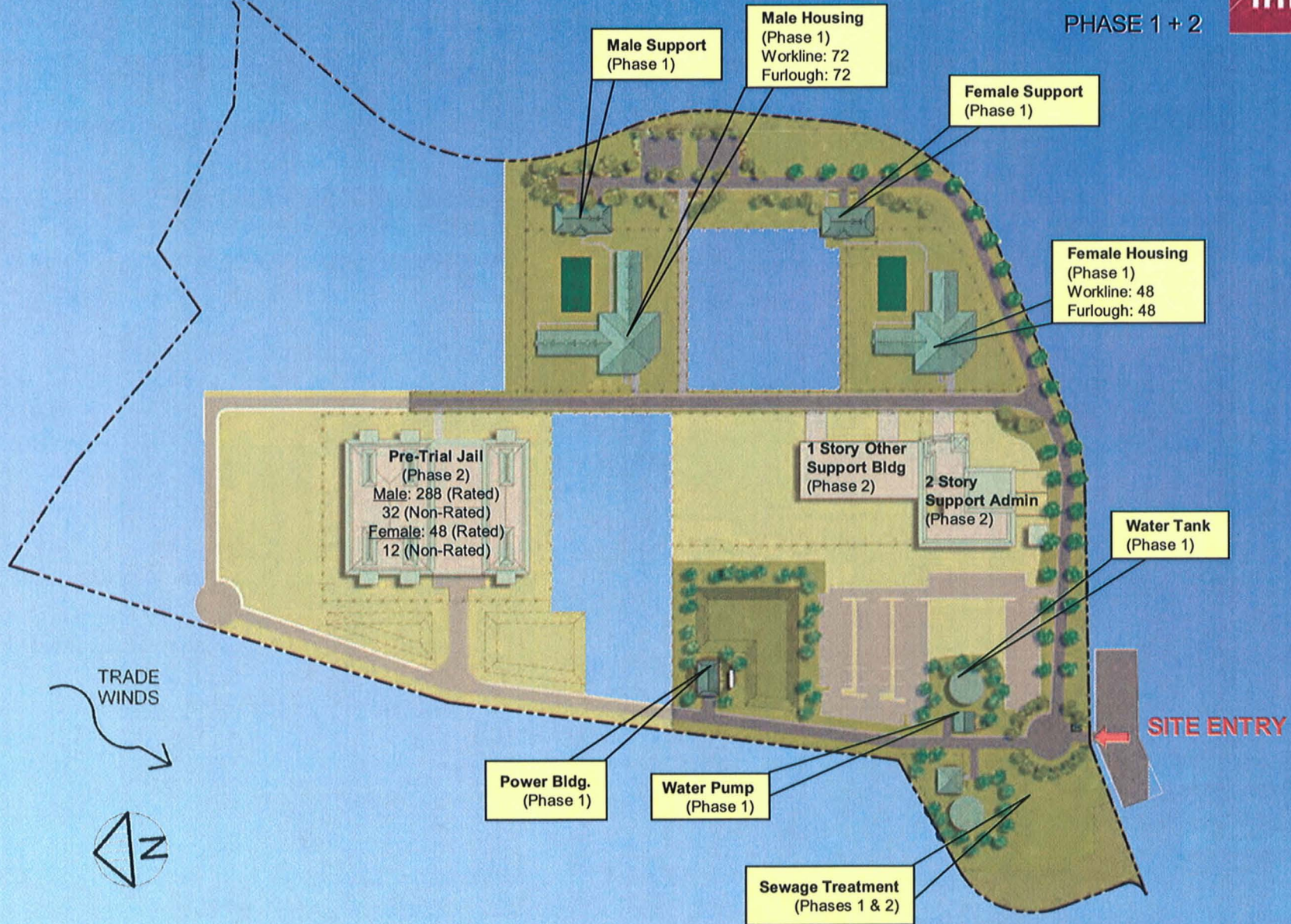
SOUTH ELEVATION



MAUI REGIONAL PUBLIC SAFETY COMPLEX

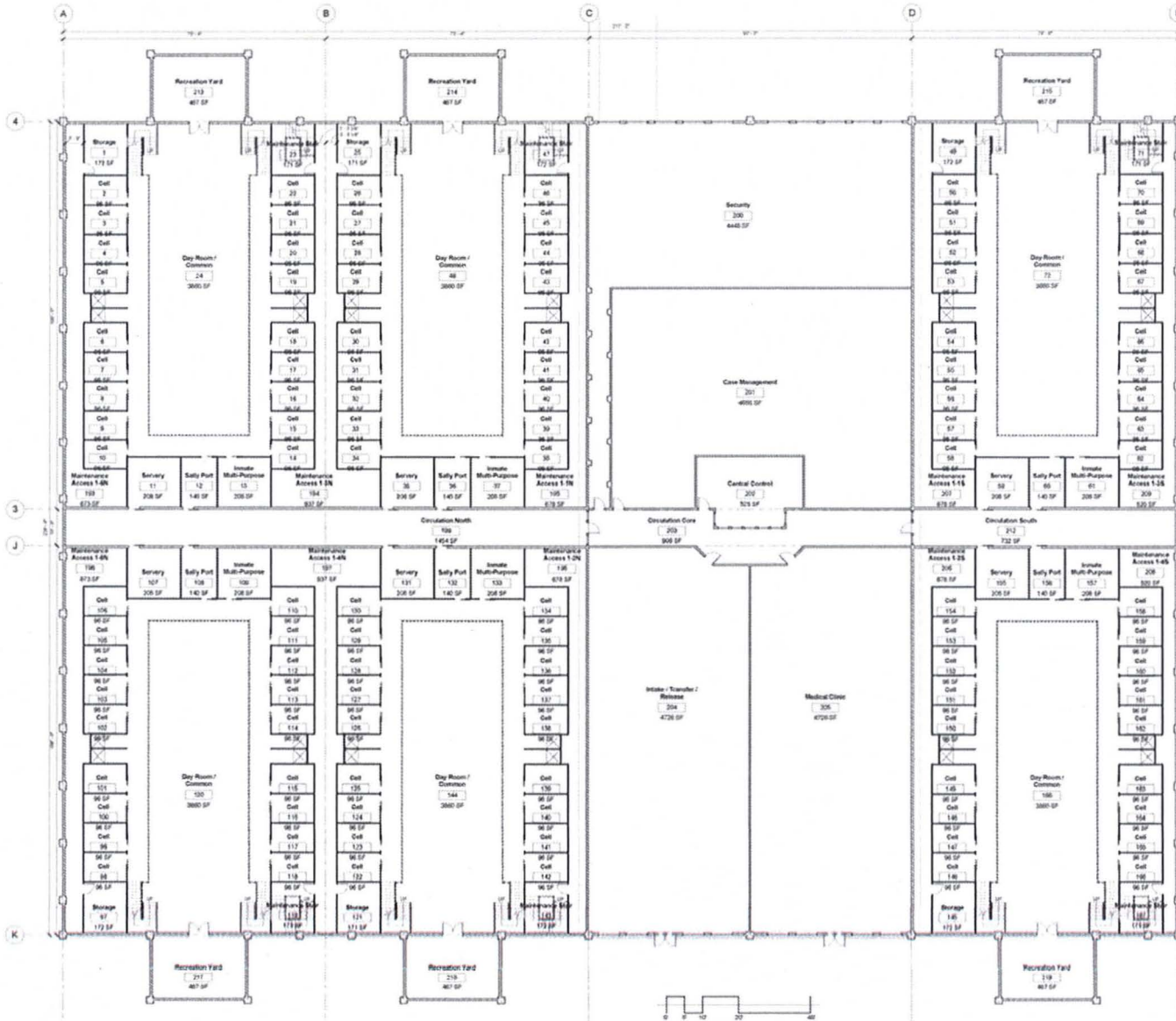


PHASE 1 + 2



MAUI REGIONAL PUBLIC SAFETY COMPLEX

PRE-TRIAL JAIL - FIRST FLOOR



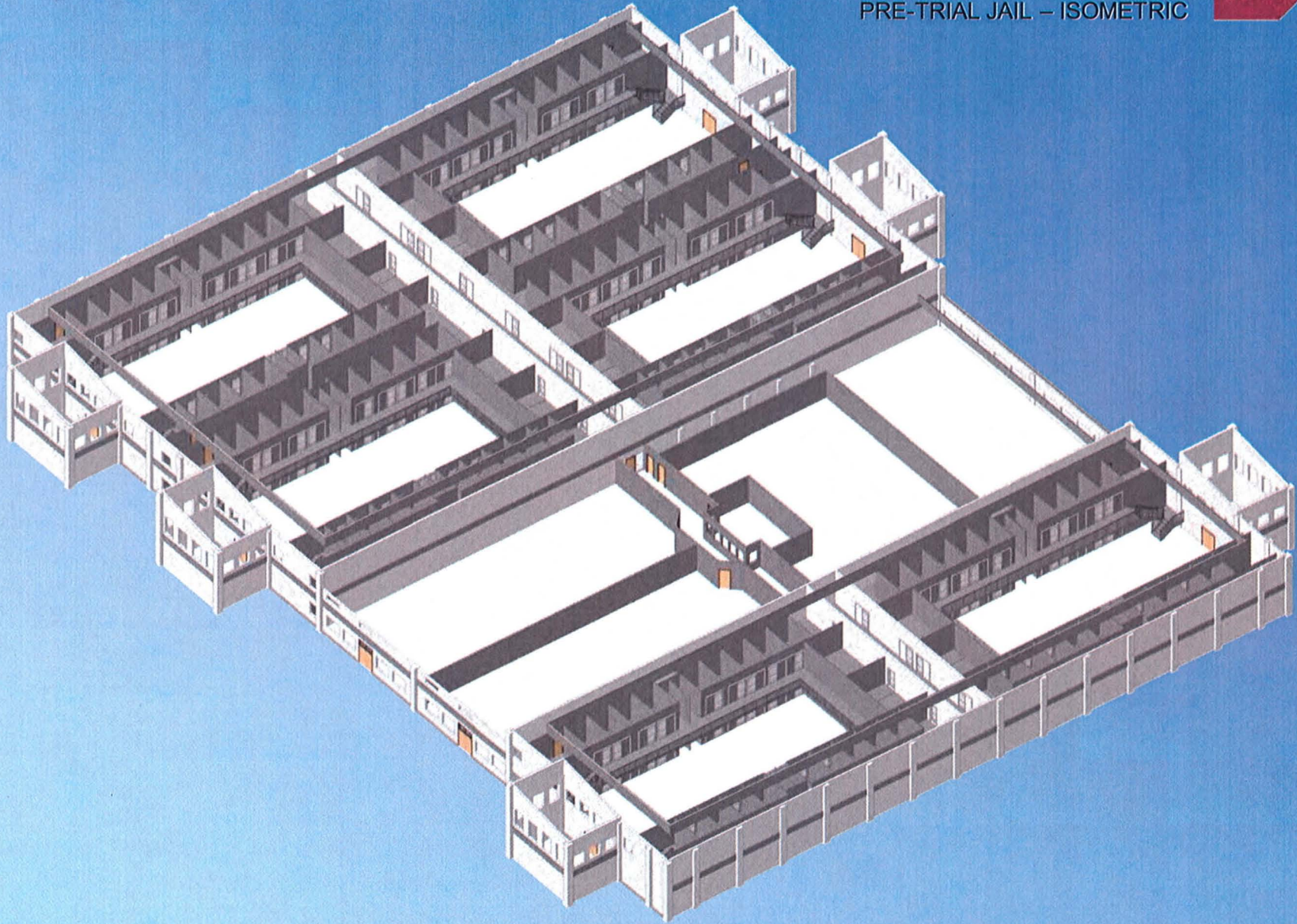
MAUI REGIONAL PUBLIC SAFETY COMPLEX

PRE-TRIAL JAIL – SECOND FLOOR



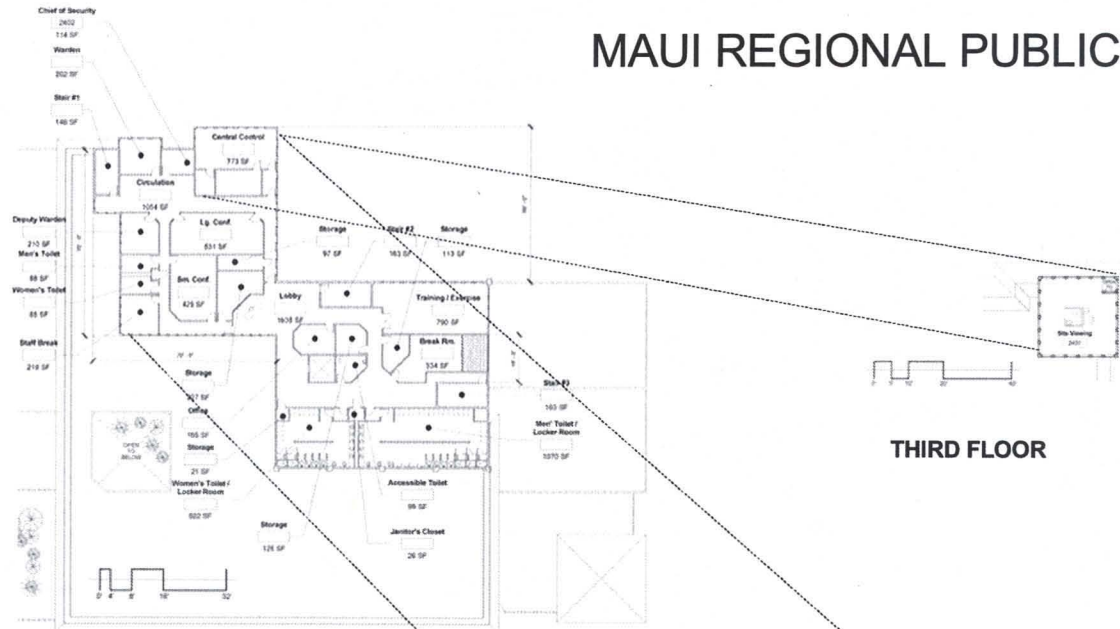
MAUI REGIONAL PUBLIC SAFETY COMPLEX

PRE-TRIAL JAIL – ISOMETRIC



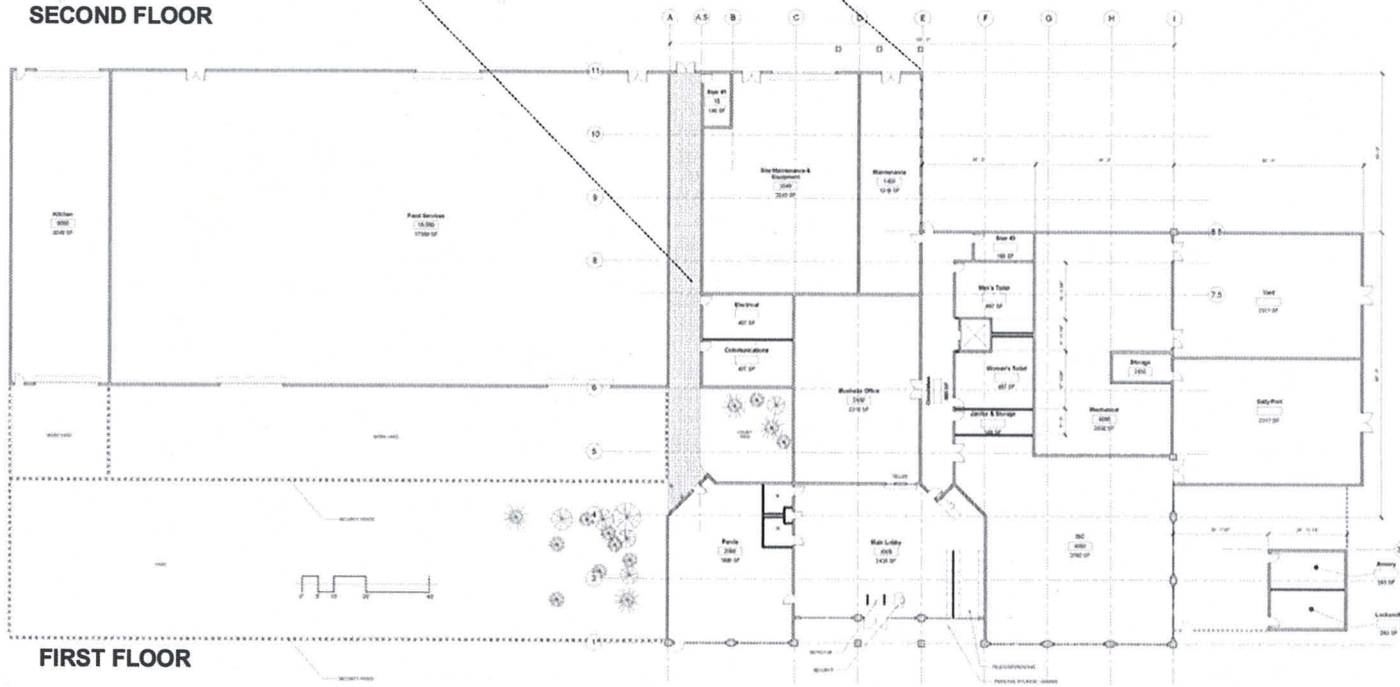
MAUI REGIONAL PUBLIC SAFETY COMPLEX

SUPPORT BUILDING



SECOND FLOOR

THIRD FLOOR

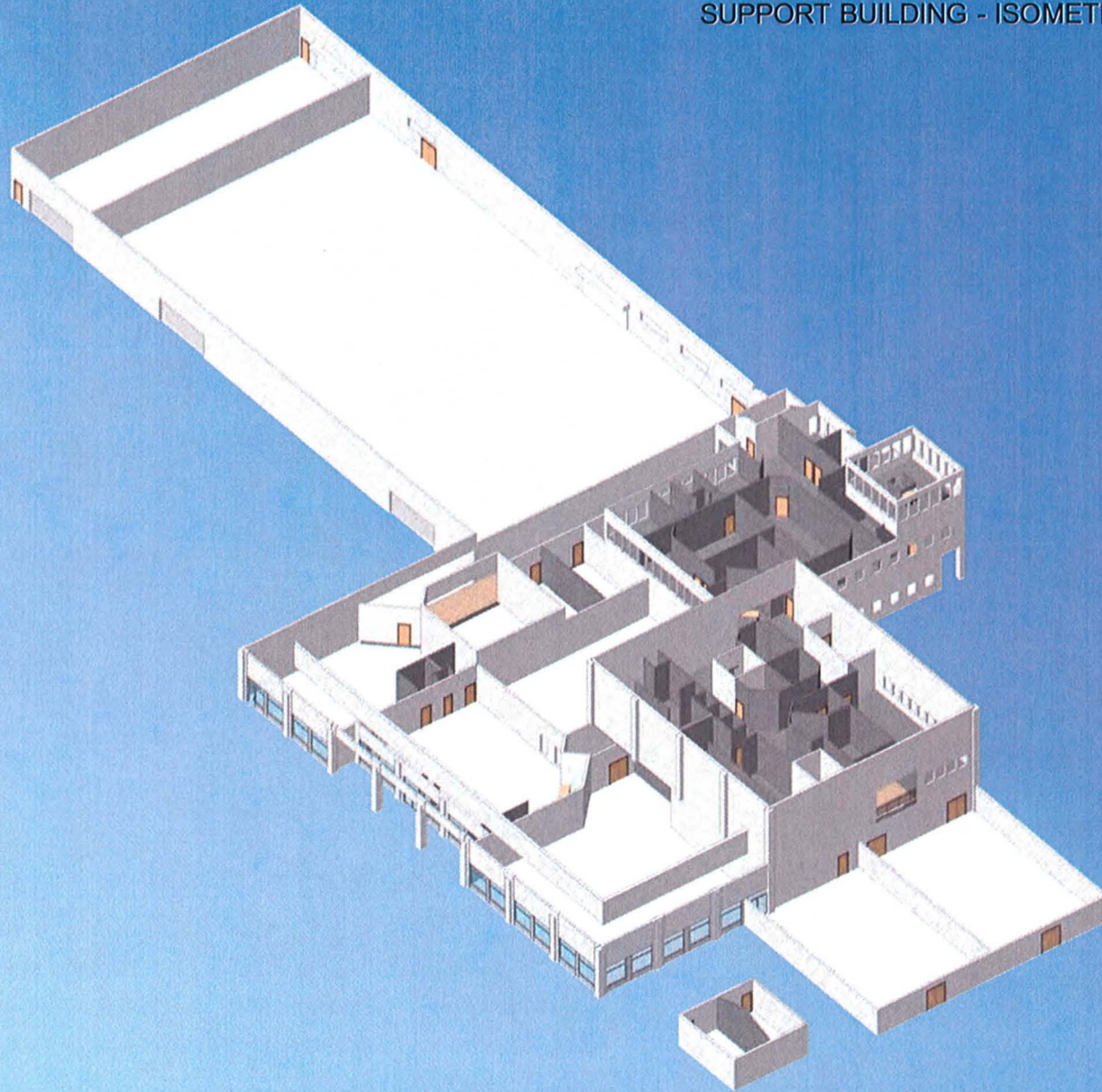


FIRST FLOOR



MAUI REGIONAL PUBLIC SAFETY COMPLEX

SUPPORT BUILDING - ISOMETRIC



MAUI REGIONAL PUBLIC SAFETY COMPLEX

TYPICAL MATERIAL FINISHES



Exterior Wall
EIFS on CMU



Interior Walls
Gypsum board



Interior Floors
Glazed Sealed Concrete



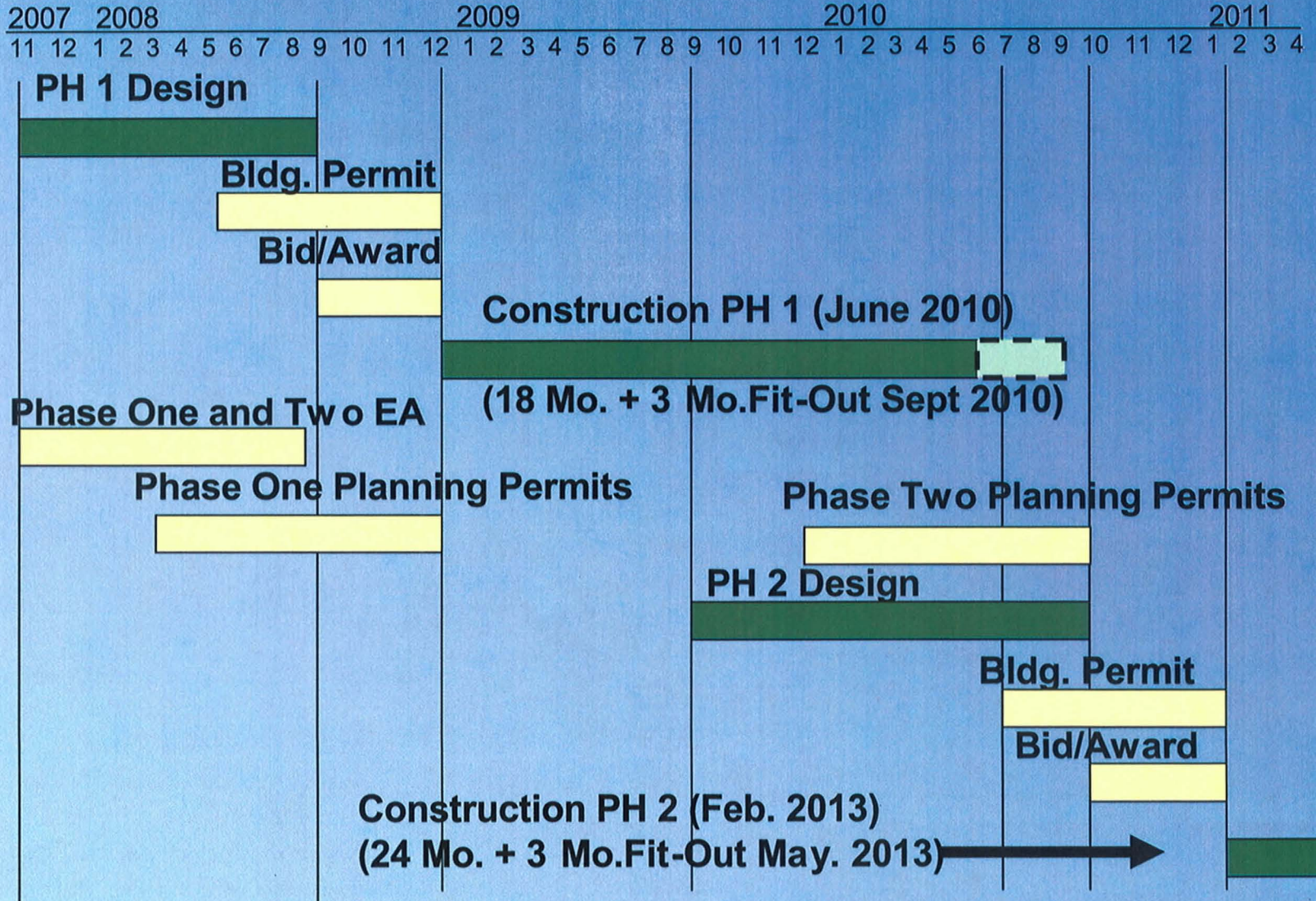
Roofing
Metal Roofing



Ceiling
Fixed Gypsum board
Acoustical Tile Grid



Project Schedule



MAUI REGIONAL PUBLIC SAFETY COMPLEX



**MAUI COMMUNITY CORRECTIONAL CENTER
PUUNENE SITE
DAGS JOB NO. 15-27-5562**

12/26/07

Estimates Based on DAGS Adjusted Construction Bid Estimate	Project Cost Est. Based On 6/30/09 Midpt. of Construction	Act 41/04 Existing Appropriation	FY 2009 Budget Request	FY 2010 Budget Request	FY 2011 Budget Request	FY 2012 Budget Request
PHASE 1						
Total Design Costs	\$7,820,000	\$7,820,000				
Total Construction Costs	\$49,460,000		\$49,460,000	\$52,420,000	\$55,570,000	\$58,890,000
Phase 1 Total Project Costs	\$57,280,000					
PHASE 2						
Total Design Costs	\$9,000,000		\$9,540,000			
Total Construction Costs	\$153,790,000			\$163,020,000	\$172,810,000	\$183,170,000
Phase 2 Total Project Costs	\$162,790,000					

NOTES:

1. Design costs noted in Phase 1 includes cost incurred over previous unsuccessful attempts to do the project.
2. Assumes project will require Construction Management Services by a consultant.
3. Includes Works of Art of 1% of the total construction appropriation is required by law.
4. Escalation factor of 6% per year assumed.
5. DAGS Adjusted Construction Bid Cost Est. is based on a 5% reduction due to consultant using a 20% area factor. DAGS assumes a 15% factor.