

Senator Rosalyn H. Baker, Chair, Senate Committee on Ways and Means  
Representative Marcus R. Oshiro, Chair, House Committee on Finance

Jill Takasaki Canfield  
Executive Director  
Pacific and Asian Affairs Council  
1601 East West Road, 4<sup>th</sup> Floor  
Honolulu, HI 96848-1601  
944-7781/ed@paachawaii.org

Saturday, March 8, 2008

Support of ProglD UOH800/Leg Code 198-O Grant-In-Aid for Pacific and Asian Affairs Council,  
Relating to UH International Affairs Outreach Program

I am providing testimony in support of the Pacific and Asian Affairs Council's (PAAC) 2009 Grant-in-Aid application for the University of Hawaii Community College (UHCC) International Affairs Outreach Program.

In our increasingly interconnected world where one in six U.S. jobs is tied to international trade and most U.S. corporations expecting most of their growth in overseas markets, the demand for a workforce with international competence will only increase. Students must be prepared and globally competent, no matter what field or line of work they choose. In the same way that computer literacy became an essential skill in the 1990's; global literacy should occupy the same importance.

In designing our programs, we strive to achieve five things which are important for students to develop no matter what field or line of work they choose: foster appreciation and respect for the diversity of cultures; acknowledging differences and discovering collective interests that can bridge differences; develop a view of the world as an increasingly interconnected set of systems; introduce students to trans-sovereign issues such as health, human rights, the environment, and trade; cultivate understanding of the impact of own choices in shaping the future; and include experiential activities and projects that will bridge the gap between learning and participation such as study tours and exchange programs.

The UHCC International Affairs Outreach Program enhances the community college curriculum by offering an array of programs including guest speakers, presentations, and arts & cultural performances representing a range of academic disciplines, cultures, and geographic areas. The purpose of this program is to increase knowledge of international and intercultural matters in community college students and the community at large; and identify and develop international resources for the staff and faculty at the community colleges. All presentations are free and open to the public, and coordinated in cooperation with the seven main UHCC campuses: Kapi'olani, Honolulu, Leeward, Windward, Kaua'i, Maui, and Hawai'i. Since 1993, PAAC has reached over 90,500 students and community members through this program.

Last year, this program held 45 programs, and served 6,372 people at seven community colleges statewide including satellite facilities in Hana, Moloka'i, and Lana'i; for the first time, we also coordinated a Community College Academic WorldQuest Competition and a study abroad scholarship.

For the current fiscal year, so far we have coordinated 18 programs, serving over 5200 attendees, at the following sites: Hawaii Community College/UH-Hilo, Kapiolani Community College, Honolulu Community College, Windward Community College, Leeward Community College, Maui Community College, and the Hana and Waianae CC satellites. We have continued

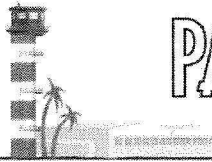
the Academic WorldQuest Competition and will offer additional study abroad scholarships for study in Mexico, Costa Rica, and Japan. Later this month we are collaborating with community college faculty and staff in coordinating international festivals as Leeward Community College and Kapi'olani Community College.

This summer, we will offer 12 international internships in China in collaboration with KCC's Honda International Center. The goals of this program are to allow students to practice Chinese, gain work experience in China, and make contacts and network in China.

In August, we will help coordinate a service learning/global education training program for community college faculty. The goals of this program are: allow for civic engagement of Hawaii Community College Faculty at an international level; exchange of teaching techniques and curriculum development through trainings between Chinese instructors and Hawaii CC faculty; create opportunities for Hawaii Community College faculty to bring cultural experiences from China back into their classrooms; help Community College Faculty be more student and community centered since a large population of Hawaii local residents are of Chinese descendents; and assist Community College Faculty to network and make contacts with teachers in China

In early September, we will hold a 2-day conference on the Middle East. The goals of this conference are to educate the community and Community College students about the Middle East, create an opportunity for local academics from Hawaii to learn more about Middle Eastern issues, and allow for local academics to learn from scholars from the Middle East, and scholars as well as experts of the Middle East. The participants will include scholars from the Middle East such as Morocco and Lebanon National University, and also re-known scholars and experts of the Middle East Studies from the U.S. mainland such as Georgetown University, the Middle Eastern Institute, and the U.S. State department.

Thank you for this opportunity to testify.



# PACIFIC AVIATION MUSEUM

PEARL HARBOR

Hangar 37, Ford Island - 319 Lexington Blvd, Honolulu, HI 96818 - tel (808) 441-1000 - fax (808) 441-1019  
e-mail: [info@pacificaviationmuseum.org](mailto:info@pacificaviationmuseum.org) - web: [www.pacificaviationmuseum.org](http://www.pacificaviationmuseum.org)

**HONORARY CHAIRMAN**  
President George H.W. Bush

**BOARD OF DIRECTORS**

**CHAIRMAN**  
ADM Ronald J. Hays, USN (Ret.)

**PRESIDENT**  
Clinton R. Churchill

**EXECUTIVE VICE PRESIDENT**  
ADM R. J. "Zap" Zlatoper, USN (Ret.)

**VICE PRESIDENTS**  
MC Edward V. Richardson, USAF (Ret.)  
Darrell G. Welch, Jr.

**VICE PRESIDENT AND LEGAL COUNSEL**  
Peter Starr

**SECRETARY**  
Richard M. May, Jr.

**TREASURER**  
Harvey Gray

**ASSISTANT TREASURER**  
Michael L. Olson

**DIRECTORS**

Kenneth R. Bailey  
Aileen Blanc  
VADM Michael Bowman, USN (Ret.)  
Henry P. Bruckner  
BG Benjamin Cassidy, USAF (Ret.)  
BG Irwin K. Cockell, Jr., USA (Ret.)  
Chuck Cottor  
RADM Ken Fisher, USN (Ret.)  
Dennis Fitzgerald  
Charles L. Goodwin  
Lisa Hamilton  
Jim Hickerson  
BG Dwight M. Kealoha, USAF (Ret.)  
Thomas S. Kosasa, MD  
Thomas E. Lawrence  
BG Frances Mossman, USAF (Ret.)  
William C. Nelson  
Dorn Parent  
James K. Schuler  
William Shankel, MD  
Cliff Slater  
John T. Sterling  
Orson Swindle  
Edward E. Swofford  
Kenneth D. Wiecking

**EXECUTIVE DIRECTOR**  
Kenneth H. DeHoff, Jr.

**ADVISORY BOARD**

ADM Stanley R. Arthur, USN (Ret.)  
Gerald Coffee  
GEN John K. Davis, USMC (Ret.)  
BG Jerome Hager, USMC (Ret.)  
ADM Thomas B. Hayward, USN (Ret.)  
VADM Gerald H. Hoewing, USN (Ret.)  
R.A. "Bob" Hoover  
VADM William D. Houser, USN (Ret.)  
Senator Daniel K. Inouye  
Dr. Timothy Keck  
Superintendent Douglas Lenz, NPS  
GEN John Lorber, USAF (Ret.)  
Senator John McCain, III  
GEN Merrill A. McPeak, USAF (Ret.)  
Jim Nabors  
BG Chuck Yeager, USAF (Ret.)

To: Sen. Rosalyn H. Baker, Chair  
Members, Senate Ways and Means Committee

Rep. Marcus R. Oshiro, Chair  
Members, House Finance Committee

From: Clinton R. Churchill  
President, Pacific Aviation Museum Pearl Harbor

Date: March 6, 2008

Subject: GRANT-IN-AID FOR PACIFIC AVIATION MUSEUM PEARL HARBOR

Dear Chairs Baker, Oshiro and Committee Members;

The highly anticipated Pacific Aviation Museum – Pearl Harbor (Phase 1) opened to the public on December 7, 2006, 65 years after the attack on Pearl Harbor. Located on historic Ford Island, a National Historic Landmark and the site of our nation's first aviation battlefield, the museum's first phase tells the story of the first year of military aviation in the Pacific during World War II.

The museum's first year of operation was a success by any and all measures. We welcomed more than 95,000 visitors, including 4,700 school children on education field trips. Our operating fund for calendar year 2006 was right at break-even and were "in the black" for all of our activities.

Following a successful first year of operation, the Pacific Aviation Museum is poised to begin work on Phase 2, Hangar #79, which will encompass aviation history in the Pacific Theater during World War II. Funding necessary for this next phase is \$33 million of which 88% is expected from national and international sources. For this purpose, the museum has established a mainland office led by an executive fundraising director. The museum continues to participate in a Direct Mail program that to date has over 35,000 donors. We anticipate that this endeavor will continue to grow and support our Phase 2 efforts.

Since its opening, the museum has greeted a steady flow of visitors each day, including school groups from private and public schools. The D.O.E. is excited about partnering with the Museum; all lessons and activities are aligned with the DOE's HCPS standards for grades 1-12 in the areas of science, math, social studies, language arts, and fine arts. Our Education Center's Flight Lab is equipped with individual flight stations that bring to life the unique history that occurred in the Pacific region.

In the interest of promoting Pacific Aviation Museum to a wider audience of visitors, we have now joined forces with the USS Arizona Memorial, the USS Bowfin Museum, and the USS Missouri Memorial to form the Pearl Harbor Historic Sites. This newly

formed joint effort will have a significant impact on bringing visitors to all four sites at Pearl Harbor.

The economic and tourism impact of the Pacific Aviation Museum will be substantial over time, especially as each hangar is designed, retrofitted, and opened. With an important *historical presence*, found no other place on earth, it is anticipated that Pacific Aviation Museum will be a very successful, bringing in more and more visitors each year. As a new visitor attraction, the museum is already contributing significantly to our tourism economy.

It is critical, at this point, to demonstrate to national and international audiences that the State of Hawaii endorses and supports Phase 2 of Pacific Aviation Museum Pearl Harbor. The museum acknowledges and appreciates Grants-in-Aid (GIAs) totaling \$1 million received from the 2006 and 2007 Legislative sessions for Phase 2. A total of \$2 million of state funding (including the prior GIAs) for Phase 2 would represent 6% of the funds needed. It is important to underscore that our GIA request is for CIP, not operating funds.

Thank you for agreeing to receive this additional information relative to our Grant-In-Aid request. We encourage your support.

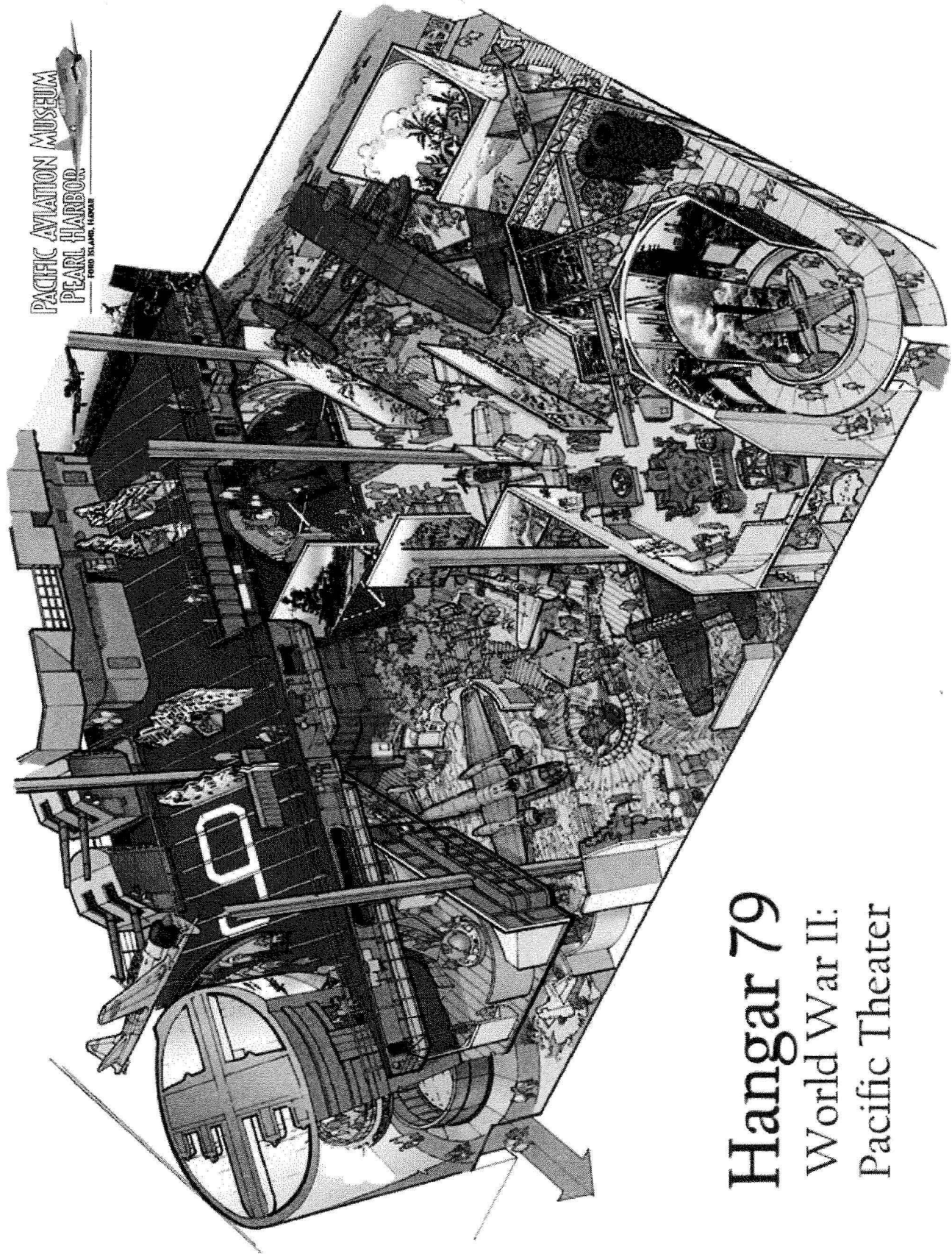
Very truly yours,



Clinton R. Churchill  
President, Pacific Aviation Museum

Attachment: Rendering of Hangar 79 – World War II

PACIFIC AVIATION MUSEUM  
PEARL HARBOR  
FORD ISLAND, HAWAII



# Hangar 79

World War II:  
Pacific Theater

**Testimony to House Finance and Senate Ways and Means Committees  
Public Hearing on Grants-in-Aid, Saturday, March 8, 2008, 9:00 am**

From: Dr. Tin Myiang Thein, Executive Director, Pacific Gateway Center

Re: Grant-in-aid for Ke'ehi Community Resource Center  
\$3,000,000, capital improvement (CIP) funding

**Summary:** The project is to develop a \$15 million, 64,000 square foot multi-purpose Ke'ehi Community Resource Center on 13.2 acres of vacant, undeveloped land at Ke'ehi Lagoon, Kalihi Kai, Honolulu, for two premier social services non-profit agencies. The bulk of the funding is expected from federal government sources and can be utilized in several phases.

**Who:** Two premier non-profit agencies are partners in this project with the lead partner being Pacific Gateway Center, joined by Oahu Head Start.

The Pacific Gateway Center (PGC), established in 1973 by the Palama Council of Churches, is a 501(c)(3) private non-profit corporation (FEIN: 99-0236204), initially known as the Kalihi Palama Immigrant Center. PGC's mission is to empower Hawaii's low-income residents, immigrants and refugees to achieve self-sufficiency through skill-building and access to opportunities while respecting cultural heritages.

PGC directly serves approximately 5,000 individuals per year and thousands more indirectly to help them gain access to resources, skill building, and training opportunities that lead to self-sufficiency. During the past decade, PGC has become increasingly involved in poverty alleviation through economic development, micro enterprise, and asset accumulation strategies that work towards PGC's long-range goal of empowering low-income people. PGC's core program components are 1) social services, 2) employment and training, 3) economic development, and 4) community building.

Oahu Head Start, founded in 1965, operates as an entity of the non-profit Honolulu Community Action Program, often known as HCAP. Oahu Head Start is the largest preschool education and childcare provider of its kind on Oahu serving over 1600 low-income youngsters at over 50 locations. Head Start is largely federally funded.

**What:** This project is to replace old, extremely dilapidated offices of these two agencies and to provide new program delivery space in a consolidated, "one stop," centralized location for complementary services and clients.

Pacific Gateway Center's office is currently at 720 N. King Street, east of Kaumakapili Church and is in such disrepair that a long rain gutter has been installed inside the building. Oahu Head Start's main office is currently located at the old Kapalama Military Reservation, off Sand Island Access Road, in World War II facilities which have serious roof, termite, utility, and structural problems.

The project will serve as a central community resource center for existing and possibly new services, including new Head Start preschool education and childcare services, workforce development training, food services for Head Start and possibly other programs, immigrant services, foreign language translation, and allowance for expansion.

The central, “one stop” location will provide complementary services to the overlapping needs of diverse clients and optimize program resources, expertise of staff, assist with easier program collaborations and partnerships. For example, workforce training could benefit from on-site childcare, which needs food services, which in turn can be used for employment training, which sometimes needs foreign language translation.

**Where:** The project is to be located on 13.2 acres of vacant, undeveloped land at Ke’ehi Lagoon in the Kalihi Kai area and is now under month-to-month, revocable permit from the State Department of Land and Natural Resources. The site is located east of the Ke’ehi Lagoon Memorial park/DAV (Disabled Veterans) memorial halls and is bordered on three sides by water.

**How much:** \$3,000,000 is requested, largely for start-up, predevelopment planning, permitting, engineering purposes of this project. The bulk of the funding is expected from federal government sources with additional funds from county and private, non-profit sources. The funding and build-out of the project can be utilized in phases.

**More information about Pacific Gateway Center:**

For more information about Pacific Gateway Center or this project, please contact PGC’s executive director Dr. Tin Myiang Thein at 720 N. King Street, Honolulu, HI, 96817 or 851-7010.

PGC’s programs include:

- Job placement, counseling, and training
- Hawaii Language Bank which provides interpretation and translation services for over 30 languages
- English as a second language training
- Culinary kitchen incubator and related training
- Hawaii’s only U.S. Small Business Administration intermediary lending program
- Operating an affordable housing facility
- Micro-loans for business assistance
- Hawaii’s only nationally recognized refugee resettlement program
- Currently developing a retail incubator in Chinatown

**Testimony to House Finance and Senate Ways and Means Committees  
Public Hearing on Grants-in-Aid, Saturday, March 8, 2008, 9:00 am**

From: Dr. Tin Myiang Thein, Executive Director, Pacific Gateway Center

Re: Grant-in-aid for Recycle, Reduce, Reuse Plastic Project  
\$275,000, operational funding

**Summary:** The Recycle, Reduce, Reuse Plastic Project is an innovative, one-of-a-kind, dual purpose environmental and economic development project which will collect, recycle scrap/waste plastics and with a special heat process convert the plastics into new products for reuse and commercial sales.

**Who:** The Pacific Gateway Center (PGC), established in 1973 by the Palama Council of Churches, is a 501(c)(3) private non-profit corporation (FEIN: 99-0236204), initially known as the Kalihi Palama Immigrant Center. PGC's mission is to empower Hawaii's low-income residents, immigrants and refugees to achieve self-sufficiency through skill-building and access to opportunities while respecting cultural heritages.

PGC directly serves approximately 5,000 individuals per year and thousands more indirectly to help them gain access to resources, skill building, and training opportunities that lead to self-sufficiency. During the past decade, PGC has become increasingly involved in poverty alleviation through economic development, micro enterprise, and asset accumulation strategies that work towards PGC's long-range goal of empowering low-income people. PGC's core program components are 1) social services, 2) employment and training, 3) economic development, and 4) community building.

**What:** This project will collect, recycle scrap and waste plastics which will be melted by a special heat compression machine to be reused and sold in a new form for a number of products for commercial sales.

The combination of recycling and reusing plastics has at the following benefits:

1. It is better for the environment in terms of energy saved, environmental degradation, and waste reduction than disposal in a landfill or by burning
2. It sustains up to 10 times more jobs on a per-ton basis than landfill or burning.
3. When formed into new products, the reuse has a higher value than most recycling activities alone.

This is a small-scale pilot project with narrow and wide-ranging goals. The narrow goal is to develop a plastic recycle/reduce/reuse facility which produce plastic products and jobs. The wide-ranging goal is to collect information about waste composition, flow characteristics, waste management operations and costs, economic development opportunities and cost analysis. The project has skilled and unskilled job possibilities



from collecting, cleaning, and sorting of used plastic products to equipment operation and maintenance, marketing and sales.

**Where:** The project will operate at PGC's Umi Street culinary kitchen incubator project in Kalihi. This facility which is owned by PGC without debt operates 24/7, twenty-four hours a day and seven days a week.

**How much:** \$275,000 is requested with the following target objectives:

- Develop a completed operational plastic recycling system.
- Recycle 200 pounds of plastic per day by month 12.
- Create 10 new job opportunities by month 12.
- Provide 5 communities/agencies/companies with technical assistance to create or expand community-based recycling operations.

**More information about Pacific Gateway Center:**

For more information about Pacific Gateway Center or this project, please contact PGC's executive director Dr. Tin Myiang Thein at 720 N. King Street, Honolulu, HI, 96817 or 851-7010.

PGC has extensive experience in areas related to this project including job training, economic development, community outreach, and access to low-income residents, immigrants and refugees.

PGC's programs include:

- Job placement, counseling, and training
- Hawaii Language Bank which provides interpretation and translation services for over 30 languages
- English as a second language training
- Culinary kitchen incubator and related training
- Hawaii's only U.S. Small Business Administration intermediary lending program
- Operating an affordable housing facility
- Micro-loans for business assistance
- Hawaii's only nationally recognized refugee resettlement program
- Currently developing a retail incubator in Chinatown
- Etc.

# **Palolo Chinese Home**

Prog ID: HMS601

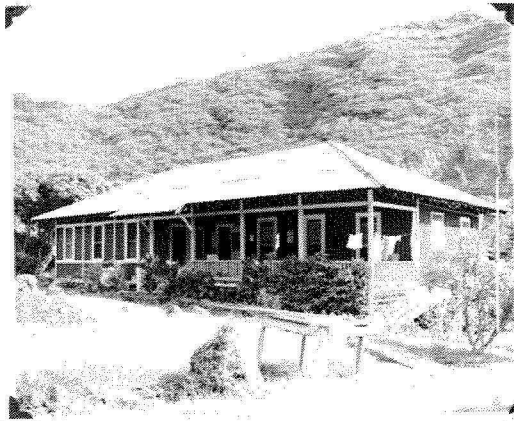
Leg Code: 204-C

---

**Grant-in-Aid  
Informational Briefing  
March 8, 2008**



## **Palolo Chinese Home – the beginnings of providing care and support to Hawaii’s Elderly**



From 1896...

The Wai Wah Yee Yin Hospital, the predecessor to the Palolo Chinese Home, began caring for Chinese immigrants and plantation workers who became ill and in need of medical care.

## **112 years later, Palolo continues its support and care to Hawaii’s elders**



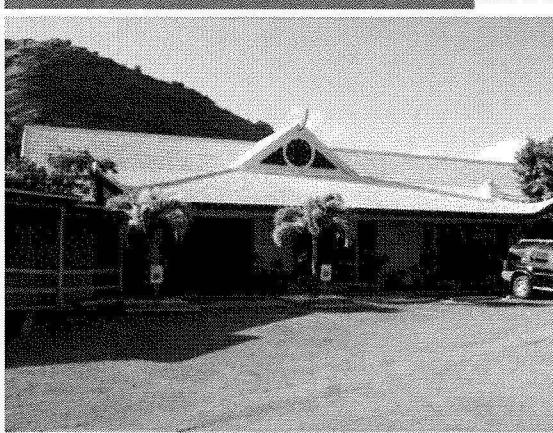
▪501(c)(3) organization providing services to all ethnicities

▪Largest and 2<sup>nd</sup> oldest Adult Residential Care Home in Hawaii

▪The only nursing home currently under construction to add nursing home beds to address Hawaii’s shortage

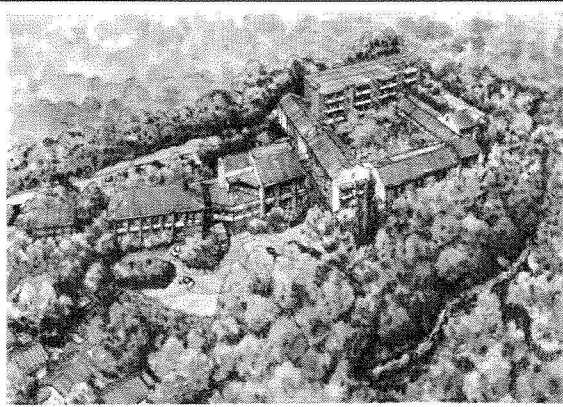
▪One of the largest suppliers of hot meals to the Hawaii Meals on Wheels Program

## **A continuum of elder care services**



- 15 skilled and intermediate care beds
- 50 adult residential care home beds
- HiNOA (Hawaii Neighborhood Outreach to the Aged) Program – outreach support to keep seniors in their homes
  - Adult Day Care
  - In-home meals
  - In-home MD visits

## **Visioning Our Future**



To redevelop our campus to provide the facilities to offer a continuum of care for seniors in Hawaii.

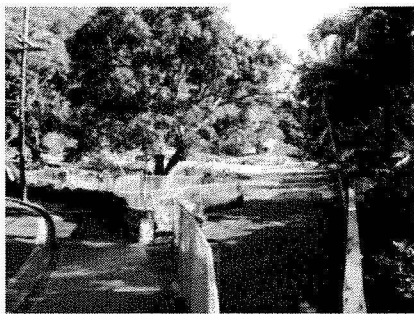
## **Campus Redevelopment – A Plan to Continue PCH’s Future**

---

- 2003 started a phased campus redevelopment project to update and modernize its aging facilities and to increase its capacity to provide much needed services to the growing elderly in Hawaii
    - Upgrade utilities infrastructure
    - Renovation of a building housing 15 nursing home beds and Adult Day Care Program
    - Construction of a new building to add 46 nursing home beds
- 

## **Upgrade Facilities Infrastructure**

---



Where a dirt road and fruit trees once stood

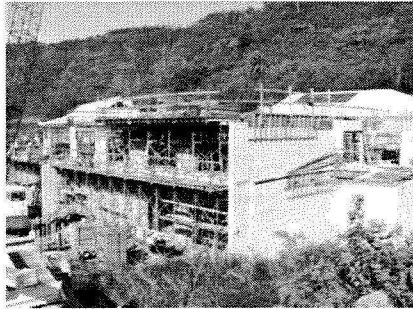


Now is a new roadway and paved parking lot

---

## Expanding capacities for care

---



January 2008

- A new 3 story building will increase our capacities to provide support services to Hawaii's seniors:
  - Add 46 nursing home beds to help address Hawaii's shortage
  - Provide a new kitchen to increase meals prepared for the community
- Estimated completion: Summer 2008

## PCH's GIA request for support from the Legislature

---

- Assistance with funding for Phase III – The next phase of campus redevelopment
  - Renovation of Farm Hall – built in 1957
  - Renovation of Victoria Ward Hall – built in 1967

## Farm Hall

---



- \* Dining and activity facility for residents
- \* Plans are to enhance and expand Farm Hall as multi-use community center with office space for the expanding HiNOA (outreach to the aged) program.

## Victoria Ward Hall

---



- \* Adult residential care home building houses 50 residents
- \* Upgrades to plumbing (including fire sprinklers) and electrical utilities are needed

## Kokua to the Palolo Chinese Home

---

We ask for your support of Palolo Chinese Home's grant-in-aid request. The redevelopment of our campus will enable PCH to continue its mission of caring and support to the community and will be very much appreciated by the elders that receive our care.



## Mahalo

---







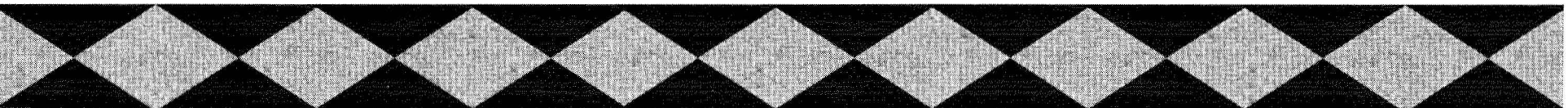
# Kipuka

Everything we do runs deep...



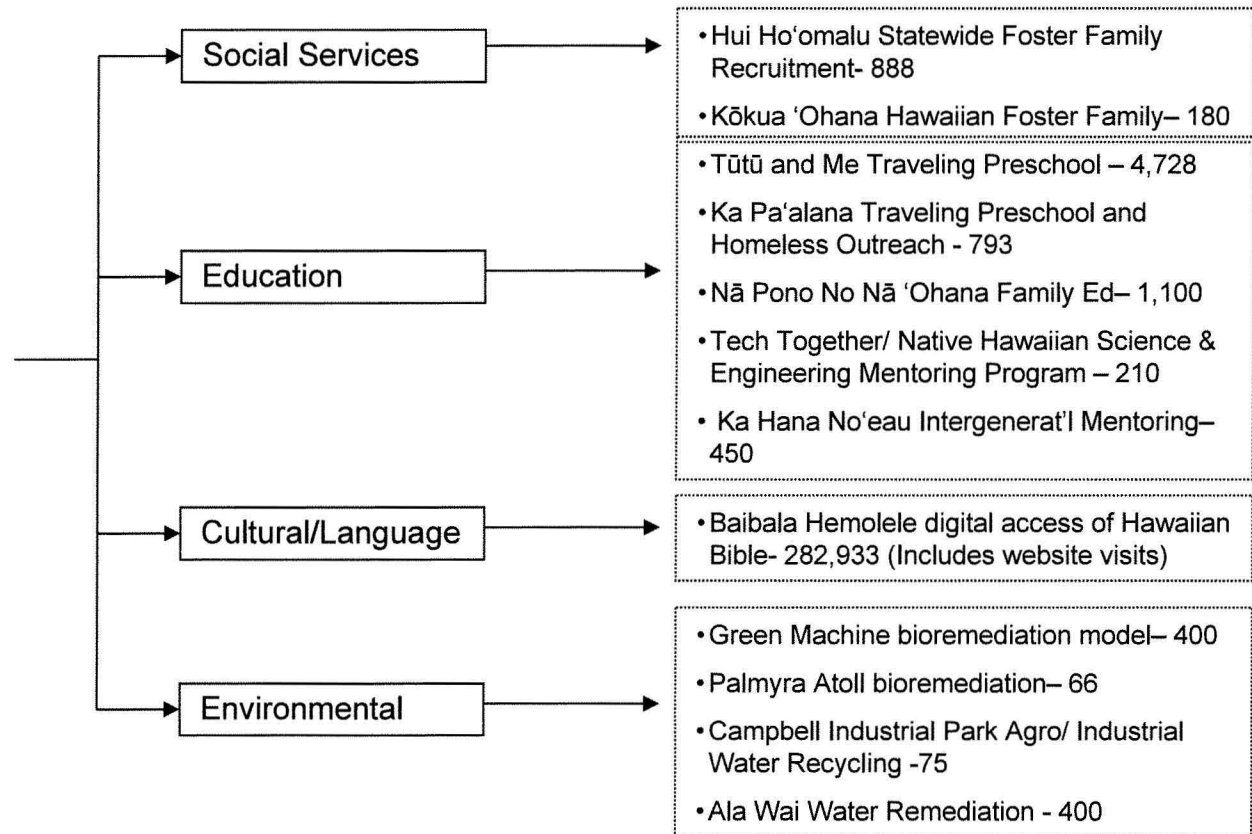
## Who we are...

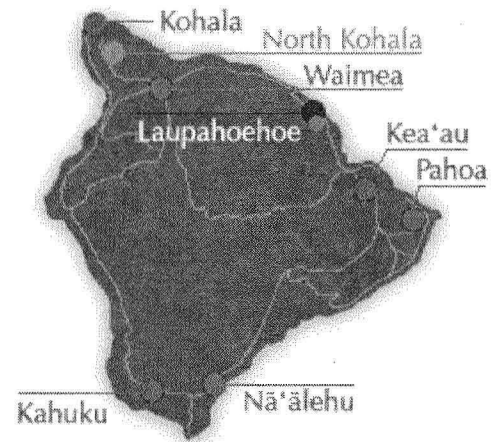
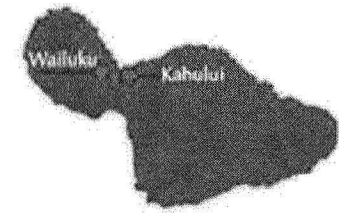
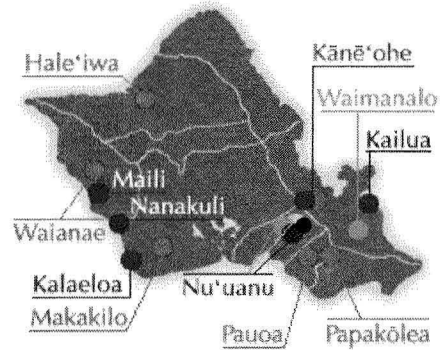
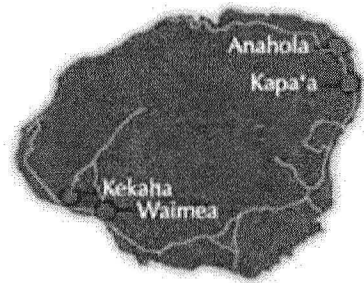
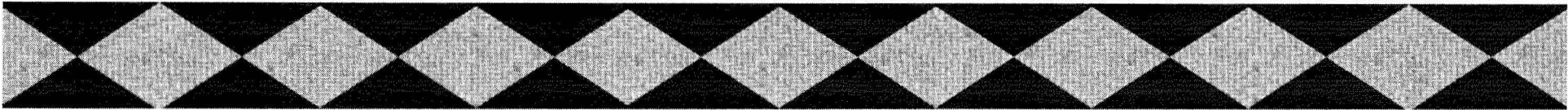
Founded in 1997, Partners in Development Foundation, a 501(c)(3) public non-profit organization, develops and implements educational, environmental, and social service projects that empower Hawaiian children, families, and communities.



# Partners in Development Foundation

Staff of 150+ Implement Programs that Cumulatively Impact  
Thousands:

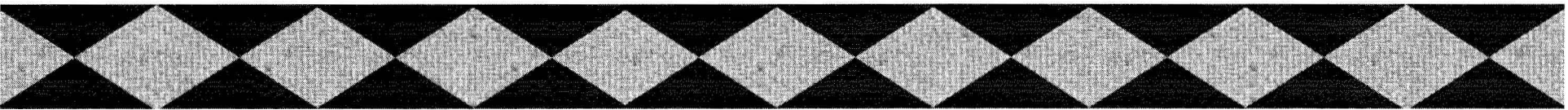




## Map Legend

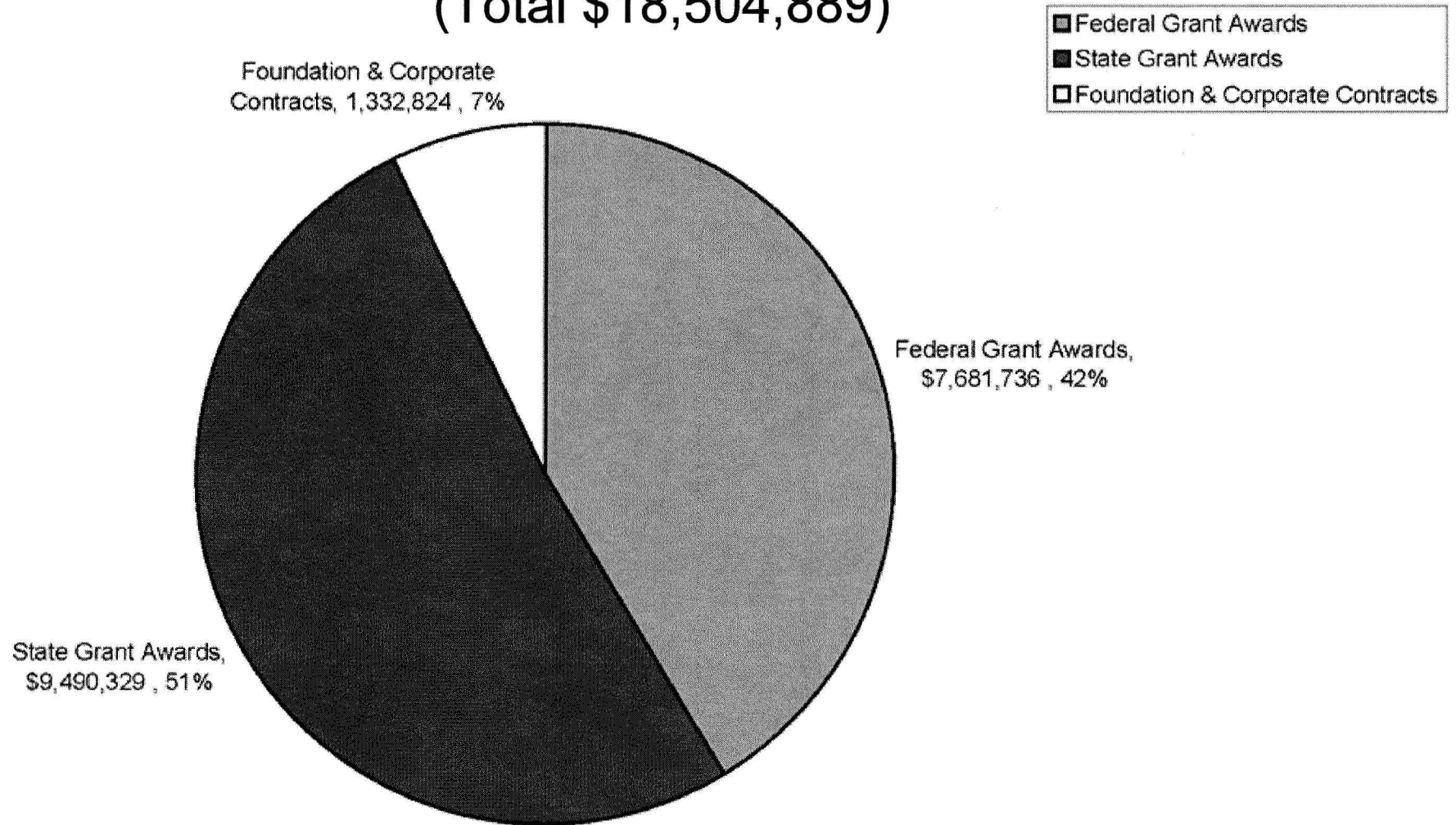
- Hui Ho'omalua\*\*
- Kōkua 'Ohana\*\*
- Ka Pa'alana Traveling Preschool & Outreach Services / 'Ike No'eau
- Tūtū and Me Traveling Preschool\*\*
- Nā Pono No Nā 'Ohana
- Tech Together / 'Ike 'Ea
- Native Hawaiian Science and Engineering Mentoring Program
- Ka Hana No'eau
- Baibala Hemolele
- Green Machine

**\*\*Statewide programs**



# PIDF Income by Funding Source- 2008 Budget

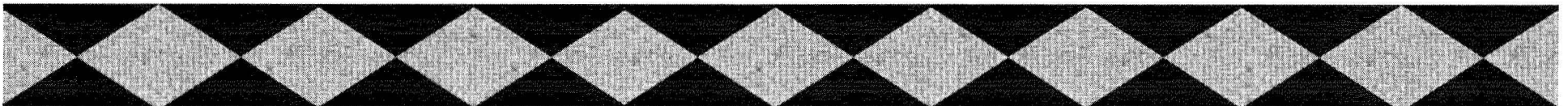
(Total \$18,504,889)

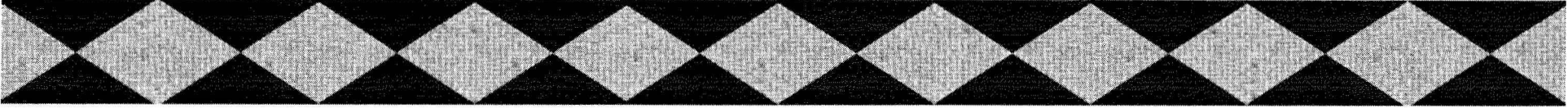




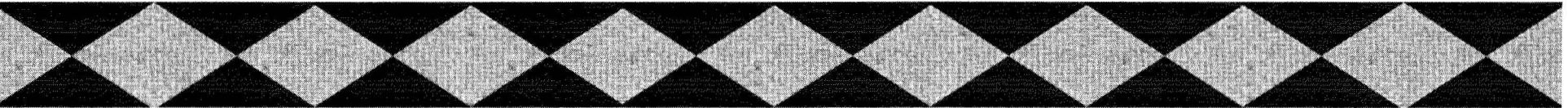
# Where we see ourselves in 3-5 years...

- Our goal is to increase & enrich our direct services to families and children in cooperation with private and public agencies.
- Strengthen our evaluation and analysis through a longitudinal perspective to measure the impact of our activities.
- Create Foundation's capabilities for marketing, fundraising, and capital development.





# Our Request:

- Our Grant-In-Aid application is to partially support the implementation of our third goal of “capacity building”.
  - PIDF is requesting \$150K/Yr over the next 3 years to train and staff personnel in the areas of marketing, fundraising, and capital development.
  - PIDF has also approached Hawaii Community Foundation and S&M Castle to meet our remaining funding needs.
- 

# Mahalo Nui Loa





**To:** The Honorable Marcus R. Oshiro  
Chair, House Committee on Finance

The Honorable Rosalyn Baker  
Chair, Senate Committee on Ways & Means

**From:** Luann Foos, Executive Director  
Good Samaritan Society at Pohai Nani

**RE: Testimony on State Grants-in-Aid Application  
State Capitol Auditorium  
9:00 a.m., March 8, 2008**

Chair Oshiro, Chair Baker and the members of the Committees on Finance and Ways and Means, thank you for allowing me to testify on behalf of Pohai Nani, which has submitted a \$1,000,000 grant-in-aid request for the planning, design and construction of the Pohai Nani Wellness Center, a state-of-the-art fitness and health facility dedicated to the intellectual, physical, and spiritual well being of the older adult.

For almost 30 years, Pohai Nani has offered our kupuna the opportunity to live their golden years with dignity and grace, with amenities and services that complement most independent and assisted living arrangements. This includes an on-campus skilled nursing facility, which allows the facility to provide a unique continuum of care that suits each individual resident, and affords residents the peace of mind that they'll always have a home at Pohai Nani.

The Pohai Nani Wellness Center's design will be in harmony with its natural environment, and will provide a convenient, safe, and non-threatening environment for our older adults. Once completed, the ADA-compliant facility will house a fully accessible and heated 14,000 gallon pool, therapeutic spa, locker rooms, an exercise room, individual therapy rooms, fitness and walking paths, healing gardens, bistro area with game tables, office space, and parking.

Further, the center will be the home of the Pohai Nani Wellness Program, a highly regarded, comprehensive and cutting-edge fitness regimen for seniors that is the first of its kind in Hawaii and perhaps the nation. The program's expansion will facilitate its greater accessibility to the general community, which will eventually account for up to 80% of its clientele.

It is an inescapable fact that not only is Hawaii's *kupuna* living longer, their life expectancy is also higher than that of their peers on the mainland – 79 years, compared to the U.S. average of 75. Hawaii's ever-increasing numbers of adults age 60 and older, represents a rapidly growing segment of the state's total population. In the thirty-year period from 1970 to 2000, their numbers have nearly tripled, from 67,490 (9% of the state population) to 207,001 (17%). The number of persons aged 75 or older increased during that same period by 415%, and those age 85 and older saw a nearly fivefold (482%) increase in their numbers – and these demographics are also projected to quadruple over the next 50 years.

Simply put, the State of Hawaii faces a real challenge in planning adequately for the future needs of its aging population.

Recent comparative studies of the Wellness Program and similar community programs conducted at fitness centers around the nation validate the concept of wellness as an integral part of any pro-active health maintenance program for older adults. These results reflect a population of older adults who are not only healthier physically, but have made tremendous strides in reinvigorating their personal self-esteem, and are thus more likely to cherish their individual autonomy and independence.

A study of senior fitness commissioned by AARP concluded that while most people age 50 or older understand the benefits of physical activity, they also seek further specific information regarding the development of personal fitness plans that are safe and will realistically meet personal goals. Many seniors are in fact not meeting recommended physical activity goals when advised to do so by a physician or other health professional. The Wellness Program, as implemented in the micro population of Pohai Nani elders, has markedly improved the lives of those exposed. Our program will utilize the realized results of the Pohai Nani micro population to reach the macro population of the Island of Oahu.

Encouraged by this program's documented physical improvements amongst older adults, the Pohai Nani Foundation embarked on a major capital campaign, *Empowering Mind, Body, Spirit*, to expand programming to *kupuna* island wide, by building the Pohai Nani Wellness Center on Pohai Nani's windward Oahu campus.

Our campaign, *Empowering Mind, Body, Spirit*, which is chaired by Stephen Knox and supported by numerous community volunteers, has thus far raised 65% of the \$4.7 million needed to complete the Pohai Nani Wellness Center. If approved by the legislature, the grant monies would enable Pohai Nani to commence the active phase of its development plans. A portion of those funds will be used to facilitate the hiring via contract of a project manager, who will be responsible for the oversight of all development-related processes, including contract procurement, timelines, and cost and fiscal management, and will work with the architect and lender to ensure that the project will be completed in a timely manner and according to prior specifications.

Mahalo nui loa for your time and consideration of our request. Should you have any further questions about our project, or would like to tour our facility, please call me at (808) 247-6211.

## **testimony**

---

**From:** Laura Thompson [pinkylava.net]  
**Sent:** Thursday, March 06, 2008 3:24 PM  
**To:** testimony  
**Subject:** GIA Briefing Mar.8 at 9:00 a.m.

### **Testimony for Grant-in-Aid #391907 for the Reconstruction of the Voyaging Canoe, Hokule'a, by the Polynesian Voyaging Society**

#### **Informational briefings for the Senate Committee on Ways and Means and the House Committee on Finance**

**Saturday, March 8, 2008 9:00 a.m. State Capitol Auditorium**

My name is Bruce Blankenfeld. I have been associated with the Polynesian Voyaging Society and Hokule'a since 1977 in the capacities of captain, navigator, board member and supervisor of dry dock and maintenance work.

I ask that you support our request for funds to redesign and reconstruct the voyaging canoe, Hokule'a, for the purpose of meeting the ever-increasing demands to use the canoe as a floating classroom. Our primary goal is to conduct a major dry dock to prepare her to sail safely for the next 25 years

Hokule'a was constructed in 1975 for the purpose of proving that the ancient Polynesians purposefully settled Hawaii and the rest of the Polynesian Triangle in double hulled voyaging canoes using non-instrument navigation. Only one voyage was planned and the canoe was to be retired. But Hokule'a became a catalyst in the revival of seafaring, cultural pride and education not only in Hawaii but throughout Polynesia and Southeast Alaska. She became a spiritual symbol and has been designated a State Treasure.

After a recent long voyage Hokule'a is now in dry dock at the Marine Education and Training center on Sand Island. 50 to 80 people, all volunteers, show up each week to work on the canoe. Included are high school and college students, and community folks wanting to share their skills and help. We meet on Wednesday evenings and Saturday mornings. After we have completed the physical work of varnishing, sanding, lashing and whatever needs to be done, we hold class. We teach how to navigate by the stars and ocean currents, how to live in a small space and the values required to voyage successfully. I invite you to join us if you wish.

I am your resource person. Please ask any questions you may have about this important project.

Aloha.