

DAVID Y. IGE
GOVERNOR
STATE OF HAWAII



JOBIE M. K. MASAGATANI
CHAIRMAN
HAWAIIAN HOMES COMMISSION

SHAN S. TSUTSUI
LT. GOVERNOR
STATE OF HAWAII

WILLIAM J. AILA, JR.
DEPUTY TO THE CHAIRMAN

**STATE OF HAWAII
DEPARTMENT OF HAWAIIAN HOME LANDS**

P. O. BOX 1879
HONOLULU, HAWAII 96805

**Testimony of Jobie M.K. Masagatani, Chairman
Hawaiian Homes Commission**

**Before the Joint House Committee on Finance
and Senate Committee on Ways and Means
on the
2015-17 Biennium Budget Request
of the Department of Hawaiian Home Lands**

January 7, 2015

Chairs Luke and Tokuda and Members of the House Committee on Finance and Senate Committee on Ways and Means.

Thank you for this opportunity to provide information on the Department of Hawaiian Home Lands (DHHL) Supplemental Budget request for Fiscal Years 2016 and 2017, Operating and Capital Improvement Program Budget.

Overview

The mission of the department is to manage the Hawaiian Home Lands Trust effectively and to develop and deliver land to native Hawaiians. We will partner with others toward developing self-sufficient and healthy communities. The trust, created by Congress through the Hawaiian Homes Commission Act of 1920, as amended, (Act) sets aside public lands to be used for the benefit of native Hawaiians (persons of at least 50% Hawaiian blood). Today, the department is responsible for the management of 203,500 acres of these trust lands, including 9,837 homestead leases statewide.

As required by the Admissions Act and as a compact with the United States, the State of Hawaii and the people of Hawaii adopted the Act as a provision of the State Constitution and agreed to faithfully carry out the spirit of the Act for the rehabilitation of the Hawaiian race. These trust responsibilities still remain.

The department administers one (1) program, HHL 602, Planning and Development for Hawaiian Homesteads. The objectives of the program are to develop and manage the designated Hawaiian home lands to create more homesteads for native Hawaiians (as defined by the Act), and generate revenues to address program needs. Fiscal years 2014 and 2015

signaled a renewed commitment by the State to support the department's administrative and operating costs through a general fund appropriation of \$9.6 million annually as provided by Article XII, Section I of the State Constitution. While the general fund appropriation is the largest increase for the department, it is not sufficient to meet the department's administrative and operating costs needs. DHHL has programmed the use of the general fund appropriation to finance its civil service and exempt positions and other administrative and operating costs to support the daily operations of the department.

Although attrition has reduced DHHL's human resource capacity, it does not diminish our commitment to serving our beneficiaries. The DHHL refocus of its staffing in various activities has minimized productivity loss. DHHL is currently filling critical positions and this is alleviating workload and operational issues that have hindered the advancement of the Hawaiian homestead program.

Impact of Current Economic and Fiscal Conditions

The department has been moderately successful in achieving planned goals set in Fiscal Year 2015 considering the constraints on its operating capacity, the prevailing economy, restriction on general fund support, and the increasing costs associated with providing services to beneficiaries. DHHL's program effectiveness is measured in terms of achieving the overall goal of enabling native Hawaiians to return to the lands, or remain on the lands, in order to improve the conditions of native Hawaiians and to support the self-sufficiency and self-determination of native Hawaiians.

Partnerships with Hawaiian organizations, non-profits, government agencies and the business community provide social, economic, educational, and employment opportunities that support in improving the condition of DHHL's beneficiaries. The department has successfully partnered with self-help housing and modified self-help housing organizations to meet the housing needs of low- to moderate-income housing for native Hawaiian families. In addition, the department continues to pursue innovative financing and renovation programs to assist low- and moderate-income beneficiary families with purchasing or building new homes, rehabilitating or renovating existing homes, or restructuring existing loans to minimize losses while keeping families in their homes. In some cases, without these programs, these families would not have realized their goals of home ownership or homesteading.

Maintenance of infrastructure, which includes clearing flood channels, fire protection of non-homestead areas, roads and facilities maintenance, has increased in costs. Further, certain counties have either not accepted portions of newer infrastructure, or have stopped performing needed repair. Sewers are a specific example of infrastructure needing repair and maintenance. Act 227, SLH 2014, clarified and confirmed that operating and maintenance of sewer systems is a county function. DHHL continues to maintain the sewer systems on Hawaiian home lands in the interim until Act 227 can be fully implemented. DHHL cannot meet

its homestead production goals and meet the needs of the beneficiaries on the waitlist if it must also continue to pay for maintenance of infrastructure.

In fiscal year 2014, DHHL has focused on reforming its loans program to improve its operations and address findings raised in the Office of the Auditor's "Audit of the Department of Hawaiian Home Lands' Homestead Services Division." DHHL is refocusing on long-standing issues, such as mortgage loan delinquencies and sufficient loan capitalization, which affect the viability of DHHL's mortgage loan program. In fiscal year 2014, DHHL managed a total of 5,201 outstanding loans, issued 12 direct residential loans, processed 281 Federal Housing Administration insured loans, processed 76 HUD Guarantee Loans (HUD Section 184A) and addressed 1,046 delinquent mortgage loans. Each of these loans represents an opportunity for a native Hawaiian to return to trust lands or to remain on these lands.

Also, since the Homestead Services Division is the heart of the day-to-day interaction between DHHL and its beneficiaries, in fiscal years 2014 and 2015, with general fund support, DHHL digitized its homestead services documents to increase operational efficiency and program effectiveness. We expect to complete other phases of the digital record project by the end of fiscal year 2015 and anticipate increase program efficiency and effectiveness.

Continuing DHHL's capacity to generate revenues through its general leasing program and other land dispositions provides a stable and reliable source of funding to sustain the activities necessary to place qualified native Hawaiians on Hawaiian home lands. DHHL is reforming some of its non-homestead disposition programs to ensure the trust earns an appropriate return. DHHL is also committed in its pursuit of energy sustainability as part of its revenue generation and homestead development plan and strives to contribute to the State of Hawaii's goal in advancing its alternative energy initiatives.

While there are tremendous challenges in front of us, the department is positioned to play an integral part in our State's economy through its CIP projects. We look forward to coordinating our efforts with the Legislature.

Federal Funds

DHHL is the recipient of the Native Hawaiian Housing Block Grant (NHHBG), CFDA 14.873, as part of the Native American Housing Assistance and Self Determination Act (NAHASDA). These funds support housing activities for beneficiaries at or below the 80% area median income. The current sequestration does not have a significant impact to these funds, but the overall NAHASDA program is subject to re-authorization this year. If the program is not re-authorized, or if it is re-authorized without the NHHBG, DHHL may risk losing these federal funds.

Biennium Budget Request

Background: DHHL Sufficient Fund Biennium Budget – FB 2015-17

Article XII, Section 1 of the State Constitution states “The legislature shall make sufficient sums available for the following purposes: (1) development of home, agriculture, farm and ranch lots; (2) home, agriculture, aquaculture, farm and ranch loans; (3) rehabilitation projects to include, but not limited to, educational, economic, political, social and cultural processes by which the general welfare and conditions of native Hawaiians are thereby improved; (4) the administration and operating budget of the department of Hawaiian home lands....”

On October 19, 2007, several beneficiaries filed a lawsuit against the State and the Hawaiian Homes Commission claiming that the State violated its constitutional duty to sufficiently fund the Department of Hawaiian Home Lands.

On March 9, 2012, the Supreme Court affirmed the Intermediate Court of Appeals judgment in part that the courts can determine what constitutes “sufficient sums” for the DHHL’s administrative and operating expenses to carry out the purposes of the Hawaiian Homes Commissions Act, 1920, as amended.

The Supreme Court also determined that “sufficient sums” for (1) development of lots, (2) loans, and (3) rehabilitation projects are political in nature and could not be judicially determined.

Based on the advice of counsel and the Court’s ruling, the Hawaiian Homes Commission, has a fiduciary responsibility to ask for amounts the Commission considers “sufficient sums” for the Department’s four purposes, including purpose no. 4 “the administration and operating budget of the department of Hawaiian home lands..”.

The Hawaiian Homes Commission request is formulated in two parts:

- a) Administrative and Operation costs relating to the Supreme Court ruling regarding purpose no. 4 of Article XII, Section I. This part also includes repair and maintenance (R&M) costs associated with existing infrastructure projects. As a result of insufficient resources, these deferred R&M items have now, in many instances, become capital improvement issues.
- b) Costs aligned with purposes numbers 1, 2 and 3, of Article XII, Section I, of the Hawaii State Constitution relating to: ...(1) development of home, agriculture, farm and ranch lots”; (2) home, agriculture, aquaculture, farm and ranch loans; and (3) rehabilitation projects to include, but not limited to, educational, economic, political, social and cultural processes by which the general welfare and conditions of native Hawaiians are thereby improved....” which the Supreme Court ruled as political in nature and, therefore, could not be judicially determined.

Hawaiian Homes Commission Biennium Budget Requests – Fiscal Years 2016 and 2017

On September 23, 2014, the Hawaiian Homes Commission (HHC) approved the following biennium budget request at its regular meeting.

Administrative and Operating Costs: Purpose 4 of Article XII, Section I

The HHC biennium budget request for administrative and operating costs total \$28,478,966 annually for fiscal years 2016 and 2017.

DHHL’s initial CIP general obligation bond request relating to R&M costs associated with existing infrastructure is made as a lump sum request under the title of “Hawaiian Home Lands Development, Statewide” totaling \$40,169,981 annually. The existing infrastructure projects have a long standing history of operational, maintenance and repair issues that have become capital improvement issues.

Hawaii State Constitution: Purposes 1, 2, 3 of Article XII, Section I; Lot Development, Loans and Rehabilitation Projects

The HHC biennium budget request for Purposes 1, 2, 3 of Article XII, Section I (Lot Development, Loans and Rehabilitation Projects) total \$144,614,375 and \$227,014,375 for fiscal years (FY) 2016 and 2017, respectively. Summarized below is the department’s biennium budget request for FY 2016 and FY 2017:

Hawaiian Homes Commission Budget Request: Purpose no. 4 - State Constitution, Article XII, Section 1		
	FY 2016	FY 2017
	(261.00)	(261.00)
Administrative and Operating Budget Request	\$28,478,966	\$28,478,966 (A)
HHC Capital Improvement Budget: For Existing Infrastructure	\$40,169,981	\$40,169,981 (C)
Total HHC Administrative and Operating Budget Request	\$68,648,947	\$68,648,947
Means of Financing: (A) = General Fund; (C) = General Obligation Bond		

Hawaiian Homes Commission Budget Request: Purposes no. 1, 2, 3, State Constitution, Article XII, Section 1		
	FY 2016	FY 2017
HHC Capital Improvement Budget: For Lot Development, Loan Capitalization, and Rehabilitation Projects	\$144,614,375	\$227,014,375 (C)(A)
Means of Financing: (A) = General Fund; (C) = General Obligation Bond		

Operating/CIP Budget: HHC Federal Fund Request

Separate from the “sufficient sums” request is an operating budget request for authorization to expend \$23,317,601 in Federal funds annually as provided by the U.S. Department of Housing and Urban Development (HUD) through the Native American Housing Assistance and Self Determination Act (NAHASDA) program. In addition, DHHL request a \$20 million authorization annually for its Federal Fund CIP budget request for its NAHASDA program.

Executive Biennium Budget Requests – Fiscal Years (FY) 2016 and 2017

Operating Budget Request for Fiscal Years 2016 and 2017

Governor’s Executive Biennium Budget request for DHHL reflects a status quo request using amounts as financed by Act 122, SLH 2014 as a current funding level, after adjustments for collective bargaining increases. Sources of funding are from general, special, trust and federal funds. Because budget proviso Section 17 of Act 134, SLH 2013 (the General Appropriations Act) provided general funding of \$9.6 million as a non-recurring cost, DHHL is requesting general funds as a new request in FY 2016 and 2017. The Governor’s Executive Biennium Budget request for FY 2016 and FY 2017 is summarized in Tables 2 and 3 in the attachments.

Capital Improvement Program Request (CIP) for Fiscal Years 2016 and 2017

The Governor’s Executive Biennium Budget request is comprised of eight (8) CIP projects. Seven (7) CIP projects, totaling \$15,000,000, seeks financing through general obligation bonds to improve or remediate existing infrastructure on Hawaiian home lands and directly relates to the administrative and operating needs of the department. DHHL prefers that the funding of these projects be reflected as a lump sum request to provide flexibility and commitment to the “sufficient sums” purpose. The other CIP budget request is funded by Federal Funds through the HUD NAHASDA program and seeks authorization to expend \$20 million annually.

Summary

We are most appreciative of the support given by the Legislature to the Hawaiian homes program throughout the years. We again thank the Committees for the opportunity to brief you on our biennium budget request. We have prepared and submitted our tables in accordance with the format and briefing instructions provided by the House Finance and Senate Ways and Means Committees. We would be pleased to respond to any questions the Committees may have.

Department of Hawaiian Home Lands
 Prioritized List of Functions

Table 1

Priority	Description of Function	Activities	Prog ID(s)	Statutory Reference
1	To develop and deliver land and housing to native Hawaiian beneficiaries of the Hawaiian home lands trust.	Award homestead (Residential, Agricultural, and Pastoral) leases to beneficiaries. Award of general leases. Provide assistance to lessees so they may obtain maximum utilization of their awards in keeping with the purpose for which those lands were leased.	HHL 602	Article XII, Section 1 of the State Constitution, Hawaiian Affairs; Hawaiian Homes Commission Act, 1920, as amended
2	To manage trust assets including land, water, and other related sources.	Management of land dispositions, water systems, maintenance of lands and environmental protection.	HHL 602	Article XII, Section 1 of the State Constitution, Hawaiian Affairs; Hawaiian Homes Commission Act, 1920, as amended
3	To provide direction and administrative support to staff that perform core activities.	Human resources, accounting, planning, and auditing activities.	HHL 602	Article XII, Section 1 of the State Constitution, Hawaiian Affairs; Hawaiian Homes Commission Act, 1920, as amended

Department of Hawaiian Home Lands
Department-Wide Totals

Table 2

Fiscal Year 2015				
Act 122/14 Appropriation	Restriction	Emergency Appropriations	Total FY15	MOF
\$ 9,632,000.00	\$ (963,200.00)		\$ 8,668,800.00	A
\$ 13,030,827.00			\$ 13,030,827.00	B
\$ 23,317,601.00			\$ 23,317,601.00	N
\$ 10,756,146.00			\$ 10,756,146.00	T
			\$ -	
			\$ -	
\$ 56,736,574.00	\$ (963,200.00)	\$ -	\$ 55,773,374.00	Total
Fiscal Year 2016				
Act 122/14 Appropriation	Reductions	Additions	Total FY16	MOF
\$ 9,632,000.00			\$ 9,632,000.00	A
\$ 13,517,243.00			\$ 13,517,243.00	B
\$ 23,317,601.00			\$ 23,317,601.00	N
\$ 11,037,323.00			\$ 11,037,323.00	T
			\$ -	
			\$ -	
\$ 57,504,167.00	\$ -	\$ -	\$ 57,504,167.00	Total
Fiscal Year 2017				
Act 122/14 Appropriation	Reductions	Additions	Total FY17	MOF
\$ 9,632,000.00			\$ 9,632,000.00	A
\$ 13,664,596.00			\$ 13,664,596.00	B
\$ 23,317,601.00			\$ 23,317,601.00	N
\$ 11,154,080.00			\$ 11,154,080.00	T
			\$ -	
			\$ -	
\$ 57,768,277.00	\$ -	\$ -	\$ 57,768,277.00	Total

Department of Hawaiian Home Lands
Program ID Totals

Table 3

Prog ID	Program Title	MOF	As budgeted by Act 122/14 (FY15)			Governor's Submittal (FY16)				Governor's Submittal (FY17)			
			Pos (P)	Pos (T)	\$\$\$	Pos (P)	Pos (T)	\$\$\$	Percent Change of \$\$\$\$	Pos (P)	Pos (T)	\$\$\$	Percent Change of \$\$\$\$
HHL 602	Planning and Development for Hawaiian	A	-	-	\$ 9,632,000	-	-	\$ 9,632,000	0%	-	-	\$ 9,632,000	0%
HHL 602	Planning and Development for Hawaiian	B	115.00	-	\$ 13,030,827	115.00	-	\$ 13,517,243	4%	115.00	-	\$ 13,664,596	5%
HHL 602	Planning and Development for Hawaiian	N	4.00	2.00	\$ 23,317,601	4.00	2.00	\$ 23,317,601	0%	4.00	2.00	\$ 23,317,601	0%
HHL 602	Planning and Development for Hawaiian	T	81.00	9.00	\$ 10,756,146	81.00	9.00	\$ 11,037,323	3%	81.00	9.00	\$ 11,154,080	4%

Department of Hawaiian Home Lands
Budget Decisions

Table 4

Prog ID	Sub-Obj	Description of Request	Initial Department Request FY16			Initial Department Request FY17			Budget & Finance Recommendation FY16			Budget & Finance Recommendation FY17			Governor's Decision FY16			Governor's Decision FY17		
			MOF	Pos (P)	Pos (T)	\$\$\$	MOF	Pos (P)	Pos (T)	\$\$\$	Pos (P)	Pos (T)	\$\$\$	Pos (P)	Pos (T)	\$\$\$	Pos (P)	Pos (T)	\$\$\$	
HHL 602	4328	Restore Non-Recurring General Fund Appropriation	A	-	-	\$ 9,632,000	A	-	-	\$ 9,632,000	-	-	\$ 9,632,000	-	-	\$ 9,632,000	-	-	\$ 9,632,000	
HHL 602	4328	Add: 5% Inflation Adjustment to Non-Recurring Item	A	-	-	\$ 481,600	A	-	-	\$ 481,600	-	-	\$ 481,600	-	-	\$ 481,600	-	-	\$ 481,600	
HHL 602	4328	Change MOF of Special Fund Positions	B	(115.00)	-	\$ (5,671,884)	B	(115.00)	-	\$ (5,671,884)	-	-	\$ (5,671,884)	-	-	\$ (5,671,884)	-	-	\$ (5,671,884)	
HHL 602	4328	Change MOF of Trust Fund Positions	T	(81.00)	(9.00)	\$ (4,716,516)	T	(81.00)	(9.00)	\$ (4,716,516)	-	-	\$ (4,716,516)	-	-	\$ (4,716,516)	-	-	\$ (4,716,516)	
HHL 602	4328	Change MOF for Collective Bargaining	B	-	-	\$ (486,416)	B	-	-	\$ (486,416)	-	-	\$ (486,416)	-	-	\$ (486,416)	-	-	\$ (486,416)	
HHL 602	4328	Change MOF for Collective Bargaining	T	-	-	\$ (281,177)	T	-	-	\$ (281,177)	-	-	\$ (281,177)	-	-	\$ (281,177)	-	-	\$ (281,177)	
HHL 602	4328	Add: Special and Trust Fund Positions Plus 5% Inflation	A	196.00	9.00	\$ 10,907,820	A	196.00	9.00	\$ 10,907,820	-	-	\$ 10,907,820	-	-	\$ 10,907,820	-	-	\$ 10,907,820	
HHL 602	4328	Add: CB from Special and Trust Fund	A	-	-	\$ 767,593	A	-	-	\$ 767,593	-	-	\$ 767,593	-	-	\$ 767,593	-	-	\$ 767,593	
HHL 602	4328	Add: 64.00 New Positions	A	64.00	-	\$ 1,465,286	A	64.00	-	\$ 1,465,286	-	-	\$ 1,465,286	-	-	\$ 1,465,286	-	-	\$ 1,465,286	
HHL 602	4328	Eliminate Fringe Benefits	B	-	-	\$ (2,534,234)	B	-	-	\$ (2,534,234)	-	-	\$ (2,534,234)	-	-	\$ (2,534,234)	-	-	\$ (2,534,234)	
HHL 602	4328	Eliminate Fringe Benefits	T	-	-	\$ (2,299,096)	T	-	-	\$ (2,299,096)	-	-	\$ (2,299,096)	-	-	\$ (2,299,096)	-	-	\$ (2,299,096)	
HHL 602	4328	Change MOF of Special Fund Other Current Expenses	B	-	-	\$ (4,824,709)	B	-	-	\$ (4,824,709)	-	-	\$ (4,824,709)	-	-	\$ (4,824,709)	-	-	\$ (4,824,709)	
HHL 602	4328	Change MOF of Special Fund Other Current Expenses	T	-	-	\$ (3,740,534)	T	-	-	\$ (3,740,534)	-	-	\$ (3,740,534)	-	-	\$ (3,740,534)	-	-	\$ (3,740,534)	
HHL 602	4328	Increase DCE for Current Staff Plus 5% Inflation	A	-	-	\$ 1,455,725	A	-	-	\$ 1,455,725	-	-	\$ 1,455,725	-	-	\$ 1,455,725	-	-	\$ 1,455,725	
HHL 602	4328	Increase DCE for 64.00 Additional Positions	A	-	-	\$ 813,750	A	-	-	\$ 813,750	-	-	\$ 813,750	-	-	\$ 813,750	-	-	\$ 813,750	
HHL 602	4328	Anahola Water System	A	-	-	\$ 157,500	A	-	-	\$ 157,500	-	-	\$ 157,500	-	-	\$ 157,500	-	-	\$ 157,500	
HHL 602	4328	HALE Program	A	-	-	\$ 525,000	A	-	-	\$ 525,000	-	-	\$ 525,000	-	-	\$ 525,000	-	-	\$ 525,000	
HHL 602	4328	Waitlist Assessment	A	-	-	\$ 1,575,000	A	-	-	\$ 1,575,000	-	-	\$ 1,575,000	-	-	\$ 1,575,000	-	-	\$ 1,575,000	
HHL 602	4328	Rehabilitation Programs	A	-	-	\$ 13,209,667	A	-	-	\$ 13,209,667	-	-	\$ 13,209,667	-	-	\$ 13,209,667	-	-	\$ 13,209,667	

Department of Hawaiian Home Lands
 FY15 Restrictions

<u>Prog ID</u>	<u>Sub-Org</u>	<u>MOF</u>	<u>Budgeted by Dept</u>	<u>Restriction</u>	<u>Difference Between Budgeted & Restricted</u>	<u>Percent Difference</u>	<u>Impact</u>
HHL 602	-	A	9632000	\$ 963,200	\$ 8,668,800	10.00%	The 10% restriction reduced the department's ability to provide direct benefits to its beneficiaries since special and trust funds are used to compensate funds restricted.

Department of Hawaiian Home Lands
Emergency Appropriation Requests

Table 8

<u>Prog ID</u>	<u>Description of Request</u>	<u>Explanation of Request</u>	<u>MOF</u>	<u>Pos (P)</u>	<u>Pos (T)</u>	<u>\$\$\$</u>
	None.					

Department of Hawaiian Home Lands
Expenditures Exceeding Appropriation Ceilings in FY14 and FY15

Table 9

<u>Prog ID</u>	<u>MOF</u>	<u>Date</u>	<u>Appropriation</u>	<u>Amount Exceeding Appropriation</u>	<u>Percent Exceeded</u>	<u>Reason for Exceeding Ceiling</u>	<u>Legal Authority</u>	<u>Recurring (Y/N)</u>	<u>GF Impact (Y/N)</u>
			None.						

Department of Hawaiian Home Lands
 Intradepartmental Transfers in FY14 and FY15

Table 10

<u>Actual or Anticipated Date of Transfer</u>	<u>MOF</u>	<u>Pos (P)</u>	<u>Pos (T)</u>	<u>\$\$\$</u>	<u>From Prog ID</u>	<u>Percent of Program ID Appropriation Transferred From</u>	<u>To Prog ID</u>	<u>Percent of Receiving Program ID Appropriation</u>	<u>Reason for Transfer</u>	<u>Recurring (Y/N)</u>
None.										

Table 11 Instructions

COLUMN	DATA ELEMENT	DEFINITION
A	State Expending Agency	State entity authorized to expend the funds as authorized by the appropriation or as delegated by the Governor. Select from drop-down menu. See legend below.
B	Program I.D.	The unique identifier for the specific program responsible for carrying out the program consisting of the abbreviation for the State entity followed by the organization number for the program. Format: XXX###
C	Award Number	The identifying number assigned by the awarding Federal Agency, such as the federal grant number, federal contract number or the federal loan number that appears in the federal award document.
D	CFDA No.	The number associated with the published description of Federal assistance program in the Catalog of Federal Domestic Assistance. Only applies to grants and loans. A list of CFDA codes can be searched at: https://www.cfda.gov/index?s=program&tab=list&mode=list Format: ##.###.
E	Award Description	Award title and description with purpose of funding action.
F	Awarding Federal Agency	Name of the federal agency that awarded and administers the award on behalf of the funding agency. Select from drow-down menu. See agency list below.
G	Award Amount	For Grants: The total amount of the award. For Loans: The total amount of the loan obligated by the Federal Agency; the face value of the loan. For Contracts: The total amount obligated by the Federal Agency.
H	Award Amount Allocated to the Program ID in Column B	Enter the portion of the total award amount allocated to this Program ID. For example, if a federal award in the amount of \$500 is allocated to only AGR100, the "Award Amount" and the "Award Amount Allocated to the Pgm ID in Column B" would both be \$500. However, if the \$500 will be allocated to AGR100, AGR200 and AGR300, in the amounts of \$100, \$250 and \$150, respectively, the "Award Amount" would be the \$500 for all three program IDs but the "Award Amount Allocated to the Pgm ID in Column B" would be \$100 for AGR100, \$250 for AGR200 and \$150 for AGR300.
I	State Appropriation Symbol	The account number established in FAMIS. The appropriation account is a combination of 4 fields: Fund Type, Fiscal Year, Appropriation Account Number, and Dept. Code. If an award has appropriation symbols for multiple fiscal years, enter the symbol for the first fiscal year. Format: X-YY-###-X
J	State Fund Match (If Any)	The amount of state funds necessary to match the award.
K	Contact Name	Name of the individual at the program level responsible for performance of the award.
L	Contact Phone No.	Phone no. of the individual at the program level responsible for performance of the award.
M	Contact Email	Email of the individual at the program level responsible for performance of the award.
	LEGEND:	
	State Expending Agency	
A (AGR)	Department of Agriculture	
B (BED)	Department of Business, Economic Dev & Tourism	
C (LNR)	Department of Land and Natural Resources	
D (TRN)	Department of Transportation	
E (EDN)	Department of Education	
F (UOH)	University of Hawaii	
G (DEF)	Department of Defense	

Table 11 Instructions

H (HTH)	Department of Health	
I (HHL)	Department of Hawaiian Home Lands	
J (JUD)	Judiciary	
K (HMS)	Department of Human Services	
L (LBR)	Department of Labor and Industrial Relations	
M (AGS)	Department of Accounting and General Services	
N (ATG)	Department of Attorney General	
O (BUF)	Department of Budget and Finance	
P (HRD)	Department of Human Resources Development	
Q (GOV)	Office of the Governor	
R (CCA)	Department of Commerce and Consumer Affairs	
S (LTG)	Office of the Lieutenant Governor	
T (TAX)	Department of Taxation	
V1 (PSD)	Department of Public Safety	
Z1 (OHA)	Office of Hawaiian Affairs	
	Federal Agency	
	Dept. of Agriculture	
	Dept. of Commerce	
	Dept. of Defense	
	Dept. of Education	
	Dept. of Energy	
	Dept. of Health and Human Services	
	Dept. of Homeland Security	
	Dept. of Housing and Urban Development	
	Dept. of Justice	
	Dept. of Labor	
	Dept. of State	
	Dept. of the Interior	
	Dept. of the Treasury	
	Dept. of Transportation	
	Dept. of Veterans Affairs	
	Corporation for National & Community Svc	
	Environmental Protection Agency	
	General Services Administration	
	NASA	
	National Science Foundation	
	Nuclear Regulatory Commission	
	Office of Personnel Management	
	Small Business Administration	
	Social Security Administration	
	U.S. Agency for International Development	

Department of Hawaiian Home Lands
Non-General Funds

Table 12

Name of Fund	Purpose	Statutory Reference	MOF	Beginning FY15 Unencumbered Cash Balance	Estimated FY15 Revenues	Estimated FY15 Expenditures and Encumbrances	Estimated FY15 Net Transfers	Estimated FY15 Ending Unencumbered Cash Balance	Balance in Excess of Program Needs
Hawaiian Home Loan Fund	To pay net proceeds when a homestead lease is canceled or surrendered or when a lessee dies without leaving a qualified successor.	HHCA § 213(b)	W	\$ 2,430,751	\$ 190,000	\$ 170,000	\$ -	\$ 2,450,751	
Hawaiian Home General Loan Fund	Issue loans for various purposes to include repair, maintenance, purchase or erection of dwellings, permanent improvements, farm loans, replacement loans, and loan guarantees.	HHCA § 213 (c)	W	\$ 14,359,820	\$ 4,000,000	\$ 2,500,000	\$ -	\$ 15,859,820	
Hawaiian Home Administration Account	Monies are to be expended by the department for salaries and all other administrative expenses of the department, excluding capital improvements, in the absence of general funds appropriated for operating and administrative costs.	HHCA § 213 (f)	B	\$ 27,491,402	\$ 12,000,000	\$ 8,000,000	\$ (3,000,000)	\$ 28,491,402	
Hawaiian Home Administration Account	Monies are to be expended by the department for salaries and all other administrative expenses of the department, excluding capital improvements, in the absence of general funds appropriated for operating and administrative costs.	HHCA § 213 (f)	B	\$ 884,827	\$ -	\$ 15,000	\$ -	\$ 869,827	
DHHL Revenue Bond Special Fund	Monies are primarily used to repay the debt services on the bonds and to maintain a reserve account as required by the bond resolution.	HHCA § 213.5	B	\$ 12,844,405	\$ 685,000	\$ 3,000,000	\$ -	\$ 10,529,405	
Hawaiian Home Lands Trust Fund	Funds are used for capital improvements and to meet the purposes of the Hawaiian Homes Commission Act of 1920, as amended.	HHCA § 213.6	T	\$ 114,762,172	\$ 18,000,000	\$ 25,000,000	\$ 30,000,000	\$ 137,762,172	
Hawaiian Home Operating Fund (T-905)	For construction operation and maintenance of revenue-producing activities that are intended to serve principally occupants on Hawaiian home lands; purchase of goods or services to be resold, rented or furnished on a charge basis to occupants of Hawaiian home lands; cost of appraisals, studies, consultant services or other staff services. Development Portion purposes include the improvement and development necessary to service present and future occupants of Hawaiian home land; improvements, additions, and repairs to all assets owned or leased by the department; engineering, architectural and planning services to maintain and develop properties; consultant services; purchase or lease of equipment; acquisition of real property; improvements constructed for the benefit of the beneficiaries of the HHCA.	HHCA § 213 (e)	T	\$ 1,101,738	\$ -	\$ 9,265,000		\$ (8,163,262)	
Hawaiian Home Operating Fund (T-906)	Same as above.	HHCA § 213 (e)	T	\$ 269,477	\$ -	\$ -	\$ -	\$ 269,477	
Hawaiian Home Operating Fund (T-915)	Same as above.	HHCA § 213 (e)	T	\$ 12,355,438	\$ 1,370,000	\$ 1,160,000	\$ -	\$ 12,565,438	
Hawaiian Home Receipts Fund	This fund serves as a clearing fund at the end of each quarter. All interest monies from loans or investments received by the department from any fun as (except borrowed money loans in the Hawaiian home-general loan fund and the Hawaiian lone-loan fund) are deposited in to this fund.	HHCA § 213(g)	T	\$ 343,677	\$ 3,000,000	\$ -	\$ (3,000,000)	\$ 343,677	
Hawaiian Home Trust Fund	This fund is used as a reserve for loans insured or guaranteed by the Federal Housing Administration, Veteran Administration or any other federal agency authorized to insure or guarantee loans.	HHCA § 213 (h)	T	\$ 11,250,100	\$ -	\$ -	\$ 1,000,000	\$ 12,250,100	

Department of Hawaiian Home Lands
Non-General Funds

Table 12

Name of Fund	Purpose	Statutory Reference	MOF	Beginning FY15 Unencumbered Cash Balance	Estimated FY15 Revenues	Estimated FY15 Expenditures and Encumbrances	Estimated FY15 Net Transfers	Estimated FY15 Ending Unencumbered Cash Balance	Balance in Excess of Program Needs
Native Hawaiian Rehabilitation Fund	The Native Hawaiian Rehabilitation Fund (NHRF) was created by the 1978 Constitutional Convention to finance various activities intended to exclusively benefit native Hawaiians. This includes, but is not limited to, educational, economic, political, social, and cultural processes by which the general welfare and conditions of native Hawaiians are improved and perpetuated.	HHCA § 213 (i)	T	\$ 3,639,856	\$ -	\$ 51,050	\$ -	\$ 3,588,806	

Department of Hawaiian Home Lands
Vacancy Report as of November 30, 2014

Table 13

Prog ID	Sub-Org	Date of Vacancy	Expected Fill Date	Position Number	Position Title	Exempt (Y/N)	SR Level	BU Code	Perm Temp (P/T)	FTE	MOF	Budgeted Amount	Actual Salary Last Paid	Authority to Hire (Y/N)	Occupied by 89 Day Hire (Y/N)	# of 89 Hire Appts	Describe if Filled by other Means	Priority # to Retain
HHL602BB	4347	8/30/2012	6/30/2015	001403	HOMESTEAD DISTRICT SUPVR II	N	24	13	P	1.00	B	\$ 57,708	\$ 57,708	N				1
HHL602BB	4347	7/1/2012	3/31/2015	001410	WATER SYSTEM MAINTENANCE HELPER	N	BC05	1	P	1.00	B	\$ 36,960	\$ 36,960	N				2
HHL602BB	4345	8/1/2005	9/30/2015	001437	CLERK STENOGRAPHER II	N	10	3	P	1.00	B	\$ 26,700	\$ 26,700	N				81
HHL602BB	4329	07/01/11	12/31/2015	009580	SECRETARY III	N	16	3	P	1.00	B	\$ 35,064	\$ 42,924	N				3
HHL602BB	4345	07/01/11	12/31/2015	009584	HOMESTEAD DISTRICT SUPERVISOR II	N	24	13	P	1.00	B	\$ 46,056	\$ 46,056	N				4
HHL602BB	4349	8/1/2010	3/31/2015	010129	HOMESTEAD DISTRICT SUPVR I	N	22	13	P	1.00	B	\$ 53,352	\$ 53,352	N				5
HHL602BB	4330	7/1/2011	12/31/2015	013274	SECRETARY I	N	12	3	P	1.00	B	\$ 30,036	\$ 30,036	N				6
HHL602BB	4346	2/1/2007	6/30/2015	013288	HOMESTEAD DISTRICT SUPVR I	N	22	13	P	1.00	B	\$ 45,576	\$ 45,576	N				7
HHL602BB	4336	07/01/11	12/31/2015	013311	CLERK TYPIST III	N	10	3	P	1.00	B	\$ 27,756	\$ 27,756	N				9
HHL602BB	4336	07/01/11	12/31/2015	022364	SECRETARY I	N	12	63	P	1.00	B	\$ 30,036	\$ 30,036	N				8
HHL602BB	4361	06/17/10	9/30/2015	023054	INFORMATION SPECIALIST IV	N	22	13	P	1.00	B	\$ 64,920	\$ 64,920	N				10
HHL602BB	4339	12/31/14	3/31/2015	023718	ACCOUNT CLERK III	N	11	3	P	1.00	B	\$ 35,046	\$ 35,046	Y				11
HHL602BB	4362	07/01/11	6/30/2015	026349	LAND AGENT V	N	24	13	P	1.00	B	\$ 51,312	\$ 51,312	N				12
HHL602BB	4339	07/01/11	9/30/2015	026382	ACCOUNT CLERK III	N	11	3	P	1.00	B	\$ 28,836	\$ 35,112	N				13
HHL602BB	4333	01/02/08	9/30/2015	028872	PROGRAM BUDGET ANALYST IV	N	22	13	P	1.00	B	\$ 45,576	\$ 62,264	N				14
HHL602BB	4341	07/01/11	6/30/2015	031723	HOMESTEAD SERVICES DIVISION ADMSTR	N	EM07	35	P	1.00	B	\$ 94,512	\$ 96,180	N				15
HHL602BB	4350	08/01/09	9/30/2015	033086	GROUNDSKEEPER I	N	BC02	1	P	1.00	B	\$ 33,228	\$ 32,856	N				16
HHL602BB	4351	12/31/07	3/31/2015	038085	MORTGAGE LOAN SPECIALIST	N	20	13	P	1.00	B	\$ 42,132	\$ 53,364	N				17
HHL602BB	4342	12/01/11	6/30/2015	038093	OFFICE ASSISTANT IV	N	10	3	P	1.00	B	\$ 34,692	\$ 36,516	N				18
HHL602BB	4341	07/24/01	12/31/2015	038094	OFFICE ASSISTANT III	N	8	3	P	1.00	B	\$ 30,276	\$ 25,668	N				19
HHL602BB	4342	02/16/07	3/31/2015	038163	HOMESTEAD APPLICATIONS CLERK II	N	13	3	P	1.00	B	\$ 31,212	\$ 33,756	N				20
HHL602BB	4353	02/01/09	3/31/2015	038168	HOMESTEAD HOUSING AGENT	N	20	3	P	1.00	B	\$ 56,172	\$ 56,172	N				21
HHL602BB	4353	07/01/09	3/31/2015	038169	HOMESTEAD HOUSING DEV MANAGER	N	EM05	35	P	1.00	B	\$ 71,760	\$ 95,928	N				22
HHL602BB	4365	12/01/07	9/30/2015	048582	LAND AGENT III	N	20	13	P	1.00	B	\$ 42,132	\$ 49,344	N				23
HHL602BB	4347	12/03/07	6/30/2015	113157	GENERAL LABORER I	N	BC02	1	P	1.00	B	\$ 33,228	\$ 31,236	N				24
HHL602BB	4343	02/01/11	6/30/2015	100485	HHL CLERK TYPIST II	Y	10	3	P	1.00	T	\$ 25,668	\$ 25,668	N				48
HHL602BB	4345	10/01/11	3/31/2015	100486	HHL DELINQUENT LOAN ASSISTANT	Y	18	3	P	1.00	T	\$ 33,756	\$ 30,888	N				66
HHL602BB	4338	08/20/03	3/31/2015	101621	HHL ACCOUNTANT II	Y	16	13	P	1.00	T	\$ 38,988	\$ 36,036	N				67
HHL602BB	4339	05/01/11	3/31/2015	101723	HHL ACCOUNT CLERK III	Y	11	3	P	1.00	T	\$ 38,480	\$ 39,480	N				49
HHL602BB	4342	12/31/12	2/1/2015	101258	HHL HOMESTEAD APPLICATION CLERK I	Y	11	3	P	1.00	T	\$ 31,212	\$ 37,968	Y				26
HHL602BB	4354	07/22/12	3/31/2015	101260	HHL LEGAL ASSISTANT III	Y	20	13	P	1.00	B	\$ 45,576	\$ 45,576	Y				28
HHL602BB	4360	02/01/11	6/30/2015	102353	HHL CLERK TYPIST II	Y	8	3	P	1.00	B	\$ 25,668	\$ 36,492	N				50
HHL602BB	4353	08/06/10	6/30/2015	102446	HOMESTEAD HOUSING SPECIALIST II	Y	18	13	P	1.00	B	\$ 37,452	\$ 37,452	N				53
HHL602BB	4353	12/31/12	6/30/2015	102447	HOMESTEAD HOUSING SPECIALIST III	Y	20	13	P	1.00	B	\$ 53,352	\$ 53,352	N				51
HHL602BB	4353	10/01/11	3/31/2015	102450	HOMESTEAD HOUSING SPECIALIST IV	Y	22	13	P	1.00	B	\$ 53,376	\$ 60,024	N				52
HHL602BB	4351	07/01/93	6/30/2015	980011	BRANCH MGR LOAN SERVICES	Y	26	13	P	1.00	B	\$ 41,467	\$ 57,720	N				29
HHL602BB	4351	07/01/98	9/30/2015	981031	LOAN PROCESSING ASST II	Y	18	3	P	1.00	B	\$ 31,200	\$ 39,492	N				74
HHL602BB	4351	07/01/98	12/31/2015	981041	LOAN PROCESSING ASST II	Y	18	3	P	1.00	B	\$ 31,200	\$ 39,492	N				75
HHL602BB	4351	07/01/98	12/31/2015	981051	LOAN PROCESSING ASST I	Y	18	3	P	1.00	B	\$ 27,744	\$ 39,492	N				76
HHL602BB	4348	07/01/11	12/31/2015	100555	HHL HOMESTEAD LEASE ASSISTANT	Y	13	3	P	1.00	T	\$ 31,212	\$ 32,460	N				77
HHL602BB	4348	02/28/13	2/1/2015	100554	HHL HOMESTEAD ASSISTANT II	Y	15	3	P	1.00	T	\$ 31,212	\$ 35,112	Y				30
HHL602BB	4355	09/01/11	12/31/2015	101073	HHL ENGINEER V	Y	26	13	P	1.00	T	\$ 79,248	\$ 59,736	N	Y	2		31
HHL602BB	4348	07/01/11	9/30/2015	101729	HHL HOMESTEAD LEASE ASSISTANT	Y	13	3	P	1.00	T	\$ 31,212	\$ 32,460	N				63
HHL602BB	4329	08/01/11	2/1/2015	102385	HHL ADMINISTRATIVE RULES OFFICER	Y	28	73	P	1.00	T	\$ 85,428	\$ 79,992	Y				32
HHL602BB	4355	08/1/10	9/30/2015	102436	HHL ENGINEER V	Y	26	13	P	1.00	T	\$ 58,248	\$ 78,984	Y				33
HHL602BB	4353	12/1/05	3/31/2015	102451	HOMESTEAD HOUSING SPECIALIST V	Y	24	13	P	1.00	B	\$ 65,256	\$ 62,424	N	Y	13		54
HHL602BB	4355	12/31/13	3/31/2015	102454	HOMESTEAD LAND DEVELOPMENT SPC	Y	22	13	P	1.00	B	\$ 62,940	\$ 67,512	N				55

Department of Hawaiian Home Lands
Vacancy Report as of November 30, 2014

Table 13

Prog ID	Sub-Org	Date of Vacancy	Expected Fill Date	Position Number	Position Title	Exempt (Y/N)	SR Level	BU Code	Perm Temp (P/T)	FTE	MOF	Budgeted Amount	Actual Salary Last Paid	Authority to Hire (Y/N)	Occupied by 89 Day Hire (Y/N)	# of 89 Hire Appts	Describe if Filled by other Means	Priority # to Retain
HHL602BB	4343	07/15/11	9/30/2015	102937	HHL CLERK TYPIST II	Y	8	3	P	1.00	T	\$ 25,668	\$ 26,700	N				56
HHL602BB	4345	08/15/10	9/30/2015	102943	HHL GENERAL LABORER I	Y	BC02	1	P	1.00	T	\$ 33,228	\$ 35,256	N				69
HHL602BB	4329	10/31/12	9/30/2015	102948	HHL CLERK TYPIST II	Y	8	3	P	1.00	T	\$ 47,412	\$ 39,480	N				57
HHL602BB	4353	3/3/12	6/30/2015	102949	HOMESTEAD HOUSING SPECIALIST I	Y	16	13	P	1.00	T	\$ 45,036	\$ 45,036	N				64
HHL602BB	4329	12/19/11	3/31/2015	102953	HHL FINANCE AND DEVELOPMENT SPC	Y	28	73	P	1.00	T	\$ 66,708	\$ 85,428	N				34
HHL602BB	4347	12/01/11	3/31/2015	104353	HHL CLERK TYPIST III	Y	10	3	P	1.00	T	\$ 27,396	\$ 28,872	Y				25
HHL602BB	4351	10/11/11	6/30/2015	104166	HHL DELINQUENT LOAN ASST	Y	18	3	P	1.00	T	\$ 37,968	\$ 64,992	N				68
HHL602BB	4365	4/16/11	12/31/2015	105800	HHL LAND AGENT IV	Y	22	13	P	1.00	T	\$ 27	\$ 62,424	N	Y	13		27
HHL602BB	4365	01/31/11	6/30/2015	106110	HHL CLERK TYPIST III	Y	10	3	P	1.00	T	\$ 32,424	\$ 32,424	Y				58
HHL602BB	4329	03/01/13	6/30/2015	106119	HHL LAND ISSUES OFFICER	Y	31	73	P	1.00	T	\$ 81,156	\$ 88,848	N				35
HHL602BB	4360	01/02/14	6/30/2015	106161	HHL CLERK TYPIST II	Y	8	3	P	1.00	B	\$ 26,700	\$ 26,700	N				59
HHL602BB	4342	06/25/09	3/31/2015	106191	HHL CLERK IV	Y	10	3	P	1.00	T	\$ 27,756	\$ 27,756	N				36
HHL602BB	4350	07/16/00	3/31/2015	106408	HHL EQUIPMENT OPERATOR III	Y	BC09	1	P	1.00	T	\$ 31,648	\$ 31,648	N				70
HHL602BB	4368	01/01/94	12/31/2015	106411	HHL LAND AGENT/ENFORCEMENT OFCR	Y	22	13	P	1.00	T	\$ 27	\$ 27	N	Y	69		37
HHL602BB	4364	12/01/95	6/30/2015	106415	APPRAISAL/TECHNICAL SERVICES MGR	Y	28	13	P	1.00	T	\$ 65,568	\$ 65,568	N				38
HHL602BB	4363	08/01/13	6/30/2015	106416	PROPERTY DEVELOPMENT AGENT	Y	26	13	P	1.00	T	\$ 67,476	\$ 75,960	Y				39
HHL602BB	4350	06/16/94	12/31/2015	106418	HHL EQUIPMENT OPERATOR III	Y	BC09	1	P	1.00	T	\$ 31,648	\$ 26,388	N				71
HHL602BB	4332	02/01/11	3/31/2015	106420	HHL PERSONNEL CLERK III	Y	9	63	P	1.00	T	\$ 26,700	\$ 31,212	Y				40
HHL602BB	4343	04/01/09	12/31/2015	106793	HHL CLERK TYPIST II	Y	8	3	P	1.00	T	\$ 25,668	\$ 33,756	N				60
HHL602BB	4329	07/01/11	12/31/2015	108405	HHL EQUIPMENT OPERATOR II	Y	BC06	1	P	1.00	T	\$ 38,436	\$ 38,436	N				65
HHL602BB	4365	11/01/11	3/31/2015	111868	HHL RESOURCE MGMT SPCLT (WATER)	Y	22	13	P	1.00	T	\$ 64,116	\$ 62,424	N				41
HHL602BB	4329	01/15/13	3/31/2015	116927	HHL SECRETARY III	Y	16	3	p	1.00	T	\$ 53,352	\$ 48,048	Y				42
HHL602BB	4368	06/30/13	6/30/2015	117165	HHL LAND AGENT/ENFORCEMENT OFF	Y	22	13	P	1.00	T	\$ 43,824	\$ 43,824	N				43
HHL602BB	4341	7/1/2011	3/31/2015	117234	HOMESTEAD SERVICES ADMIN ASST	Y	26	73	p	1.00	T	\$ 67,488	\$ 67,488	N				44
HHL602BB	4332	2/16/2010	12/31/2015	117343	HHL PERSONNEL CLERK V	Y	13	63	T	1.00	T	\$ 31,221	\$ 31,212	N				45
HHL602BB	4339	07/01/11	2/1/2015	117387	HHL ACCOUNT CLERK III	Y	11	3	T	1.00	T	\$ 29,976	\$ 29,976	N				61
HHL602BB	4355	4/15/2013	1/2/2015	117626	HALE MANAGER	Y	26	73	T	1.00	T	\$ 73,044	\$ 73,044	Y				46
HHL602BB	4347	07/01/11	9/30/2015	980021	HHL GENERAL LABORER I	Y	BC02	1	P	1.00	T	\$ 33,228	\$ 33,228	N				72
HHL602BB	4355	07/01/11	3/31/2015	7001	HOMESTEAD DEVELOPMENT SPCLT IV	Y	22	13	T	1.00	T	\$ 64,920	\$ 64,920	N				77
HHL602BB	4347	07/01/11	6/30/2015	11004	HOMESTEAD AGRICULTURE SPECIALIST	Y	22	13	P	1.00	T	\$ 51,312	\$ 51,312	N				78
HHL602BB	4345	07/01/11	9/30/2015	11005	HOMESTEAD AGRICULTURE SPECIALIST	Y	22	13	P	1.00	T	\$ 51,312	\$ 51,312	N				79
HHL602BB	4330	07/01/11	9/30/2015	990041	HHL PLANNER V	Y	24	13	T	1.00	T	\$ 67,488	\$ 67,488	N				80
HHL602BB	4368	07/01/11	9/30/2015	990051	HHL LAND AGENT/ENFORCEMENT OFCR	Y	22	13	T	1.00	T	\$ 64,920	\$ 64,920	N				73
HHL602BB	4330	07/01/11	6/30/2015	120447	HHL PLANNER V	Y	24	13	P	1.00	T	\$ 51,312	\$ 51,312	N				47
HHL602BB	4329	11/17/2013	3/31/2015	120557	NAHASDA MORTGAGE LOAN ASSISTANT	Y	13	3	T	1.00	T	\$ 28,836	\$ 28,836	N				62

Department of Hawaiian Home Lands
 Personnel Separations from July 1, 2014 to November 30, 2014

Table 14

<u>Prog ID</u>	<u>Sub-Org</u>	<u>Separation Date</u>	<u>Position Number</u>	<u>Position Title</u>	<u>Exempt (Y/N)</u>	<u>SR Level</u>	<u>BU Code</u>	<u>T/P</u>	<u>MOF</u>	<u>Budgeted FTE</u>	<u>Budgeted Salary</u>	<u>Actual FTE</u>	<u>Actual Salary</u>
HHL602BB	04341	9/1/2014	38171	Clerk IV	N	10	03	P	B	1.00	\$ 27,756	1.00	\$ 26,364
HHL602BB	04328	9/15/2014	106190	HHL Clerk IV	Y	10	03	P	T	1.00	\$ 41,040	1.00	\$ 41,040
HHL602BB	04329	11/1/2014	117345	HHL Secretary III	Y	16	03	T	T	1.00	\$ 41,040	1.00	\$ 38,988

Department of Hawaiian Home Lands
Positions Filled from July 1, 2014 to November 30, 2014

Table 15

<u>Prog ID</u>	<u>Sub-Org</u>	<u>Effective Date</u> <u>Position Filled</u>	<u>Position</u> <u>Number</u>	<u>Position Title</u>	<u>Exempt</u> <u>(Y/N)</u>	<u>SR Level</u>	<u>BU Code</u>	<u>T/P</u>	<u>MOF</u>	<u>Budgeted</u> <u>FTE</u>	<u>Budgeted</u> <u>Salary</u>	<u>Actual FTE</u>	<u>Actual Salary</u>	<u>Occupied</u> <u>by 89 Day</u> <u>Hire (Y/N)</u>
HHL602BB	04328	7/1/2014	102954	HHL Grants Spclt	Y	24	13	P	T	1.00	\$ 60,024	1.00	\$ 70,188	N
HHL602BB	04328	7/1/2014	106414	Property Dev Agent	Y	26	13	P	T	1.00	\$ 67,476	1.00	\$ 57,720	N
HHL602BB	04347	7/16/2014	104353	HHL Clerk Typist III	Y	10	3	P	T	1.00	\$ 32,424	1.00	\$ 32,460	N
HHL602BB	04355	8/1/2014	101073	HHL Engineer V	Y	26	13	P	T	1.00	\$ 83,412	1.00	\$ 41,07	Y
HHL602BB	04328	8/18/2014	102946	HHL Mgmt Analyst IV	Y	22	13	P	T	1.00	\$ 64,896	1.00	\$ 60,012	N
HHL602BB	04345	8/18/2014	38159	Hmstd Asst I	N	13	3	P	B	1.00	\$ 48,048	1.00	\$ 32,460	N
HHL602BB	04355	9/2/2014	102453	Hmstd Land Dev Spclt IV	Y	22	13	P	T	1.00	\$ 67,488	1.00	\$ 75,960	N
HHL602BB	04328	9/2/2014	111524	HHL Hmstd Lease Coord	Y	18	3	P	T	1.00	\$ 51,312	1.00	\$ 41,064	N
HHL602BB	04348	9/2/2014	110453	Hmstd Asst II	N	15	3	P	B	1.00	\$ 39,480	1.00	\$ 35,112	N
HHL602BB	04342	9/16/2014	110645	HHL Applications Asst	Y	13	3	P	T	1.00	\$ 32,424	1.00	\$ 44,388	N
HHL602BB	04348	10/1/2014	101259	HHL Legal Asst III	Y	20	13	P	B	1.00	\$ 53,352	1.00	\$ 51,300	N

Department of Hawaiian Home Lands
 Unauthorized Positions as of November 30, 2014

Table 16

<u>Prog ID</u>	<u>Sub-Org</u>	<u>Date Established</u>	<u>Legal Authority</u>	<u>Position Number</u>	<u>Position Title</u>	<u>Exempt (Y/N)</u>	<u>SR Level</u>	<u>BU Code</u>	<u>T/P</u>	<u>MOF</u>	<u>FTE</u>	<u>Annual Salary</u>	<u>Filled (Y/N)</u>	<u>Occupied by 89 Day Hire (Y/N)</u>
None.														

Department of Hawaiian Home Lands
Overtime Expenditure Summary

Table 17

Prog ID	Sub-Org	Program Title	MOF	FY14 (actual)			FY15 (estimated)			FY16 (budgeted)			FY17 (budgeted)		
				Base Salary \$\$\$\$	Overtime \$\$\$\$	Overtime Percent	Base Salary \$\$\$\$	Overtime \$\$\$\$	Overtime Percent	Base Salary \$\$\$\$	Overtime \$\$\$\$	Overtime Percent	Base Salary \$\$\$\$	Overtime \$\$\$\$	Overtime Percent
HHL 602		Planning and Development for Hawaiian Homesteads	B	\$ 6,013,384	\$ 98,157	1.6%	\$ 5,671,884	\$ -	0.0%	\$ 6,013,384	\$ -	0.0%	\$ 6,013,384	\$ -	0.0%
HHL 602		Planning and Development for Hawaiian Homesteads	T	\$ 4,959,991	\$ 27,647	0.6%	\$ 4,716,516	\$ -	0.0%	\$ 4,959,991	\$ -	0.0%	\$ 4,959,991	\$ -	0.0%

Overtime Position List

(Only for Positions the Sum of Overtime Paid and Value of Compensatory Time for which was at Least 10% of Base Pay)

Prog ID	Position No.	Bargaining Unit	Included in CB (Y/N)	Exempt (Y/N)	Temp or Perm (T/P)	MOF	Position Title	Salary Range Level	Base Annual Pay	Hours Exceeding Standard	FY 14						
											OT		Comp Time		Total OT/Comp		
											\$ Amount Paid	% of Base	Hours Earned	\$ Value of Hours Earned	% \$ Value of Base Salary	\$ Amount OT Paid + \$ Value Comp Hours Earned	% of Base
HHL 602	28956	35	N	N	P	B	Dept'l Pers Ofcr II	EM03	71,964	616	31,947	44.4%			0.0%	31,947	44.4%
HHL 602	8106	63	N	N	P	B	Secretary I	SR12	30,036	184	3,994	13.3%			0.0%	3,994	13.3%
HHL 602	38089	13	Y	N	P	B	Accountant III	SR20	43,824	550	17,386	39.7%			0.0%	17,386	39.7%
HHL 602	28903	13	Y	N	P	B	Accountant V	SR24	60,024	304	13,155	21.9%			0.0%	13,155	21.9%
HHL 602	102955	3	Y	Y	P	T	Clerk Typist III	SR10	39,480	725	20,652	52.3%			0.0%	20,652	52.3%
HHL 602	50106	3	Y	N	P	B	Hmstd Asst II	SR15	39,480	356	10,123	25.6%			0.0%	10,123	25.6%
																-	-
																-	-
																-	-
																-	-
																-	-
																-	-
																-	-
																-	-
																-	-
							GRAND TOTAL		284,808	2,735	97,256	34.1%	-	-	0.0%	97,256	34.1%
							Totals by MOF	A	-	-	-	#DIV/0!	-	-	#DIV/0!	-	#DIV/0!
								B	143,328	1,210	40,664	28.4%	-	-	0.0%	40,664	28.4%
								C	-	-	-	#DIV/0!	-	-	#DIV/0!	-	#DIV/0!
								N	-	-	-	#DIV/0!	-	-	#DIV/0!	-	#DIV/0!
								P	-	-	-	#DIV/0!	-	-	#DIV/0!	-	#DIV/0!
								R	-	-	-	#DIV/0!	-	-	#DIV/0!	-	#DIV/0!
								T	39,480	725	20,652	52.3%	-	-	0.0%	20,652	52.3%
								U	-	-	-	#DIV/0!	-	-	#DIV/0!	-	#DIV/0!
								W	-	-	-	#DIV/0!	-	-	#DIV/0!	-	#DIV/0!
								X	-	-	-	#DIV/0!	-	-	#DIV/0!	-	#DIV/0!

Department of Hawaiian Home Lands
Overpayments as of November 30, 2014

Table 19

<u>Name of Employee</u>	<u>Date of Over-payment</u>	<u>Gross Amount Overpaid</u>	<u>Amount Recovered</u>	<u>Balance</u>	<u>Category</u>				<u>Reason for Overpayment</u>	<u>Referred to Attorney General</u>
					<u>Employed Occurred > 2 Years</u>	<u>Employed Occurred < 2 Years</u>	<u>Not Employed Occurred > 2 Years</u>	<u>Not Employed Occurred < 2 Years</u>		
None.										

Department of Hawaiian Home Lands
Active Contracts as of December 1, 2014

Table 20

Prog ID	MOF	Frequency		Max Value	Outstanding Balance	Term of Contract			Organization	Category E/L/P/C/ G/S	Description	Explanation of How Contract is Monitored	POS Y/N
		Amount	(M/A/O)			Date Executed	From	To					
HHL602	B	\$ -	O	\$ 2,858	\$ 2,858.00	6/30/1989			BUSBY, CHARLES M.	S	OHANA HOMESTEAD PROGRAM; SURVEY TO SUBDIVIDE LOTS AT HOOLEHUA, MOLOKAI.	Contingent upon Contract Administrator	N
HHL602	B	\$ 45,000	O	\$ 50,000	\$ 5,000.00	10/26/1993			STATE COUNCIL OF HAWAIIAN	S	PROVIDE FOR ALL HOMESTEADERS A CLOSER RELATIONSHIP WITH DHHL TO IMPROVE	Contingent upon Contract Administrator	N
HHL602	B	\$ 27,400	O	\$ 56,476	\$ 29,076.00	10/26/1993			STATE COUNCIL OF HAWAIIAN	S	PROVIDE FOR ALL HOMESTEADERS A CLOSER RELATIONSHIP WITH DHHL TO IMPROVE	Contingent upon Contract Administrator	N
HHL602	B	\$ 58,000	O	\$ 145,000	\$ 87,000.00	3/28/1994			MEGUMI KON, INC.	S	DEVELOP A MASTER PLAN FOR IMPLEMENTING STATEWIDE WATER RESOURCE RESERVED	Contingent upon Contract Administrator	N
HHL602	B	\$ 9,750	O	\$ 75,000	\$ 65,250.00	3/28/1994			MEGUMI KON, INC.	S	DEVELOP A MASTER PLAN FOR IMPLEMENTING STATEWIDE WATER RESOURCE RESERVED	Contingent upon Contract Administrator	N
HHL602	B	\$ 42,395	O	\$ 50,000	\$ 7,605.43	6/30/1995			USDA NATURAL RESOURCES	S	PROVIDE ONSITE SOIL & WATER CONSERVATION TECHNICAL ASSISTANCE & ADVICE	Contingent upon Contract Administrator	N
HHL602	B	\$ -	O	\$ 11,456	\$ 11,456.23	6/28/1996			TOWILL, R. M. CORPORATION	S	EAST HAWAII SCATTERED LOTS SELECTION LETTER.	Contingent upon Contract Administrator	N
HHL602	T	\$ 9,700	O	\$ 15,456	\$ 5,755.59	6/28/1996			TOWILL, R. M. CORPORATION	S	EAST HAWAII SCATTERED LOTS SELECTION LETTER.	Contingent upon Contract Administrator	N
HHL602	B	\$ 13,926	O	\$ 22,500	\$ 8,574.00	6/28/1996			KULA NO NA PO'E HAWAII'O	S	"SUMMER & SATURDAY ENRICHMENT PROGRAM: (A NATIVE HAWAIIAN REHAB FUND	Contingent upon Contract Administrator	N
HHL602	B	\$ -	O	\$ 1,410	\$ 1,410.00	6/28/1996			MITCHELL, ANNIE MAE	S	ABTRACTOR SERVICES FOR 16,518 ACRE LAND TRANSFER BETWEEN DLNR & DHHL.	Contingent upon Contract Administrator	N
HHL602	T	\$ 14,044	O	\$ 15,000	\$ 956.25	1/27/1997			AKINAKA & ASSOCIATES, LTD.	S	PROVIDE PROF PLANNING, ENGINEERING & SURVEYING SVCS TO DEVELOP ANAHOLA	Contingent upon Contract Administrator	N
HHL602	B	\$ -	O	\$ 25,700	\$ 25,700.00	2/25/1997			CHILD, JOHN & COMPANY, INC.	S	APPRAISE CURRENT VALUE OF WATER RIGHTS OF DHHL IN LUALUALEI	Contingent upon Contract Administrator	N
HHL602	B	\$ -	O	\$ 800	\$ 799.50	3/25/1997			SOUZA, JEAN NISHIDA	S	ASSIST ANAHOLA COMMUNITY IN FORMULATING A LAND USE PLAN AND A	Contingent upon Contract Administrator	N
HHL602	B	\$ 24,689	O	\$ 25,000	\$ 311.00	4/29/1997			CHILD, JOHN & COMPANY, INC.	S	APPRAISAL SERVICES TO IMPLEMENT THE HHL RECOVERY ACT	Contingent upon Contract Administrator	N
HHL602	B	\$ 3,700	O	\$ 4,054	\$ 354.00	7/17/1997			MOLOKAI OCCUPATIONAL CENTER	S	HISTORIC KAPUAIWA COCONUT GROVE RESTORATION.	Contingent upon Contract Administrator	N
HHL602	T	\$ 280,590	O	\$ 285,330	\$ 4,739.65	2/24/1998			KIM & SHIROMA ENGINEERS, INC.	S	PROFESSIONAL ENGINEERING AND SURVEYING SERVICES FOR THE FREITAS	Contingent upon Contract Administrator	N
HHL602	T	\$ 99,020	O	\$ 123,030	\$ 24,010.13	2/24/1998			KIM & SHIROMA ENGINEERS, INC.	S	PROFESSIONAL ENGINEERING AND SURVEYING SERVICES FOR THE FREITAS	Contingent upon Contract Administrator	N
HHL602	B	\$ -	O	\$ 713	\$ 712.50	3/31/1998			AKAKA, MOANIKEALA	C	CONDUCT CONTESTED CASE HEARINGS AS THE HEARINGS OFFICER ON BEHALF OF	Contingent upon Contract Administrator	N

Department of Hawaiian Home Lands
Active Contracts as of December 1, 2014

Table 20

Prog ID	MOF	Amount	(M/A/O)	Max Value	Outstanding Balance	Date Executed	From	To	Organization	E/L/P/C/ G/S	Description	Explanation of How Contract is Monitored	POS Y/N
HHL602	T	\$ 151,152	O	\$ 161,477	\$ 10,324.78	12/17/1998			UNIVERSITY OF HAWAII	S	AGRICULTURAL EDUCATION PROGRAM COOPERATIVE EXTENSION SERVICE.	Contingent upon Contract Administrator	N
HHL602	T	\$ 346,428	O	\$ 370,000	\$ 23,572.15	4/23/1999			SATO & ASSOCIATES, INC.	S	PROFESSIONAL PLANNING, ENGINEERING AND SURVEYING SERVICES FOR	Contingent upon Contract Administrator	N
HHL602	T	\$ -	O	\$ 89,760	\$ 89,760.00	4/23/1999			SATO & ASSOCIATES, INC.	S	PROFESSIONAL PLANNING, ENGINEERING AND SURVEYING SERVICES FOR	Contingent upon Contract Administrator	N
HHL602	T	\$ -	O	\$ 2,500	\$ 2,500.00	5/28/1999			ANAHOLA OCEAN RECREATION	S	GRANT TO PROMOTE OCEAN AWARENESS AND WATER SAFETY.	Contingent upon Contract Administrator	N
HHL602	T	\$ 9,500	O	\$ 10,000	\$ 500.00	6/4/1999			WAIMEA HAWAIIAN HOMESTEADERS'S	S	GRANT TO INSTALL & MAINTAIN A TEMP WATER SYSTEM FOR PUUKAPU HOMESTEAD	Contingent upon Contract Administrator	N
HHL602	T	\$ 20,000	O	\$ 45,394	\$ 25,394.00	10/12/1999			HALE ALOHA O HILO HABITAT	S	GRANT TO CONSTRUCT TWO HOMES IN KEAUKAHA, ISL OF HAWAII.	Contingent upon Contract Administrator	N
HHL602	T	\$ 99,411	O	\$ 203,081	\$ 103,670.19	2/15/2000			KIEWIT PACIFIC CO.	S	SITWORK CONTRACT ON THE VILLAGE 6 OF THE VILLAGES OF KAPOLEI.	Contingent upon Contract Administrator	N
HHL602	T	\$ 1,500	O	\$ 74,833	\$ 73,332.78	2/15/2000			KIEWIT PACIFIC CO.	S	SITWORK CONTRACT ON THE VILLAGE 6 OF THE VILLAGES OF KAPOLEI.	Contingent upon Contract Administrator	N
HHL602	T	\$ -	O	\$ 13,579	\$ 13,578.90	2/24/2000			AIONA, JAMES R., JR.	C	CONTESTED CASE HEARINGS OFFICER	Contingent upon Contract Administrator	N
HHL602	T	\$ 139,995	O	\$ 161,477	\$ 21,481.95	3/24/2000			UNIVERSITY OF HAWAII	S	AGRICULTURAL EDUCATION PROGRAM COOPERATIVE EXTENSION SERVICE.	Contingent upon Contract Administrator	N
HHL602	T	\$ 21,600	O	\$ 22,867	\$ 1,267.00	6/16/2000			WAIMEA HAWAIIAN HOMESTEADERS'	S	GRANT FOR THE CREATION OF AN ALTERNATIVE MASTER PLAN FOR THE	Contingent upon Contract Administrator	N
HHL602	T	\$ 9,500	O	\$ 10,000	\$ 500.00	6/30/2000			ALU LIKE, INC.	S	NATIVE HAWAIIAN IDA PROGRAM. ANNUAL PAYMENT 10000.00	Contingent upon Contract Administrator	N
HHL602	T	\$ -	O	\$ 10,000	\$ 10,000.00	6/30/2000			ALU LIKE, INC.	S	NATIVE HAWAIIAN IDA PROGRAM. ANNUAL PAYMENT 10000.00	Contingent upon Contract Administrator	N
HHL602	T	\$ -	O	\$ 10,000	\$ 10,000.00	6/30/2000			ALU LIKE, INC.	S	NATIVE HAWAIIAN IDA PROGRAM. ANNUAL PAYMENT 10000.00	Contingent upon Contract Administrator	N
HHL602	T	\$ 137,296	O	\$ 252,861	\$ 115,564.93	9/20/2000			WAIMANALO KUPUNA HOUSING	S	DEVELOPMENT OF WAIMANALO KUPUNA HOUSING PROJECT.	Contingent upon Contract Administrator	N
HHL602	T	\$ -	O	\$ 75,000	\$ 75,000.00	9/20/2000			WAIMANALO KUPUNA HOUSING	S	DEVELOPMENT OF WAIMANALO KUPUNA HOUSING PROJECT.	Contingent upon Contract Administrator	N
HHL602	T	\$ 12,062	O	\$ 30,000	\$ 17,937.51	9/21/2000			AQUA ENGINEERS, INC.	S	OPERATION AND MAINTENANCE OF DHHL ANAHOLA WATER SYSTEM NO. 432 AND	Contingent upon Contract Administrator	N
HHL602	T	\$ 15,175	O	\$ 25,000	\$ 9,825.00	10/16/2000			POND KAULIKE, INC.	S	GRANT TO COORDINATE AND CONDUCT HAWAIIAN STUDIES COURSES FOR	Contingent upon Contract Administrator	N
HHL602	T	\$ -	O	\$ 25,000	\$ 25,000.00	7/25/2001			JRA, INC.	C	TO CONDUCT CONTESTED CASE HEARINGS TO CURE LOAN DELINQUENCIES.	Contingent upon Contract Administrator	N
HHL602	T	\$ 20,000	O	\$ 40,000	\$ 20,000.00	11/20/2001			KA OHANA O KAHIKIUI	S	GRANT FOR COMMUNITY DEVELOPMENT PROGRAM.	Contingent upon Contract Administrator	N
HHL602	T	\$ 65,736	O	\$ 70,000	\$ 4,264.17	11/20/2001			RURAL COMMUNITY ASSISTANCE	S	NAHASDA TECHNICAL ASSISTANCE/NATIVE HAWAIIAN HOUSING PLAN.	Contingent upon Contract Administrator	N

Department of Hawaiian Home Lands
Active Contracts as of December 1, 2014

Table 20

Prog ID	MOF	Amount	(M/A/O)	Max Value	Outstanding Balance	Date Executed	From	To	Organization	E/L/P/C/ G/S	Description	Explanation of How Contract is Monitored	POS Y/N
HHL602	T	\$ 508,431	O	\$ 565,390	\$ 56,959.44	1/7/2002			MCCORRISTON MILLER MUKAI	C	DEFEND THE TRUST "EMPOWERMENT INITIATIVE-LEGAL COUNSEL"	Contingent upon Contract Administrator	N
HHL602	T	\$ 36,118	O	\$ 45,196	\$ 9,078.00	1/16/2002			HUI KAKO'O 'AINA HO'OPULAPULA	S	GRANT FOR COMMUNITY DEVELOPMENT PROGRAM.	Contingent upon Contract Administrator	N
HHL602	T	\$ 28,182	O	\$ 28,515	\$ 332.31	1/25/2002			PURAL WATER SPECIALTY CO.,	S	OPERATE & MAINTAIN KAWAIHAE WATER SYSTEM AT KAWAIHAE, SOUTH KOHALA.	Contingent upon Contract Administrator	N
HHL602	T	\$ 3,200	O	\$ 4,000	\$ 800.00	3/18/2002			BAKER, JASON A	S	GRANT RESEARCHER/DEVELOPMENT INTERNSHIP.	Contingent upon Contract Administrator	N
HHL602	T	\$ 222,381	O	\$ 648,500	\$ 426,118.95	4/12/2002			MAUI ARCHITECTURAL GROUP, INC.	S	LANAI MASTER INFRASTRUCTURE PH1	Contingent upon Contract Administrator	N
HHL602	A	\$ -	O	\$ 76,020	\$ 76,020.00	6/3/2002			NANAKULI HAWAIIAN HOMESTEAD	S	MAINTENANCE/UPKEEP OF NANAKULI CEMETERY.	Contingent upon Contract Administrator	N
HHL602	T	\$ 13,750	O	\$ 50,000	\$ 36,250.00	6/10/2002			MID-PACIFIC TIMBER PRODUCTS,	S	GORSE CONTAINMENT PROJECT.	Contingent upon Contract Administrator	N
HHL602	T	\$ 120,849	O	\$ 300,000	\$ 179,151.00	6/28/2002			KIMURA INTERNATIONAL, INC.	S	KAANAPALI PARCEL MASTER PLAN 2 OPTION TO EXTEND 6 MOS. @	Contingent upon Contract Administrator	N
HHL602	T	\$ -	O	\$ 200,000	\$ 200,000.00	6/28/2002			KIMURA INTERNATIONAL, INC.	S	KAANAPALI PARCEL MASTER PLAN 2 OPTION TO EXTEND 6 MOS. @	Contingent upon Contract Administrator	N
HHL602	B	\$ 9,025	O	\$ 50,000	\$ 40,975.00	6/28/2002			PBR HAWAII	S	MAUI ISLAND PLAN	Contingent upon Contract Administrator	N
HHL602	C	\$ 593,000	O	\$ 598,000	\$ 5,000.00	6/28/2002			WAIMANALO HAWAIIAN HOMES	S	GRANTS FOR THE DESIGN & CONSTRUCTION OF COMMUNITY CENTER.	Contingent upon Contract Administrator	N
HHL602	T	\$ 103,680	O	\$ 103,992	\$ 312.17	12/17/2002			AQUA ENGINEERS, INC.	S	OPERATION & MAINTENANCE OF DHHL ANAHOLA/PUU OPAE WATER SYSTEM. EXTEND	Contingent upon Contract Administrator	N
HHL602	T	\$ 11,900	O	\$ 22,703	\$ 10,803.00	6/26/2003			HUI KAKO'O 'AINA HO'OPULAPULA	S	GRANTS FOR COMMUNITY DEVELOPMENT.	Contingent upon Contract Administrator	N
HHL602	T	\$ 19,551	O	\$ 53,000	\$ 33,449.18	6/26/2003			UNIVERSITY OF HAWAII	S	TORREY-ALOPMA D & O SURVEY-AGRICULTURE TECHNICAL ASSISTANCE.	Contingent upon Contract Administrator	N
HHL602	T	\$ 15,000	O	\$ 31,390	\$ 16,390.00	7/1/2003			KUHA'O MAU	S	GRANT AGREEMENT.	Contingent upon Contract Administrator	N
HHL602	T	\$ 47,311	O	\$ 50,000	\$ 2,688.93	9/23/2003			STRATAVIZION CONSULTING GROUP,	S	DHHL STRATEGIC PLAN.	Contingent upon Contract Administrator	N
HHL602	T	\$ 6,400	O	\$ 8,550	\$ 2,150.00	3/15/2004			KUHA'O MAU	S	COMMUNITY DEVELOPMENT GRANT	Contingent upon Contract Administrator	N
HHL602	T	\$ 121,903	O	\$ 191,826	\$ 69,923.45	6/28/2004			UNIVERSITY OF HAWAII	S	AGRICULTURAL TECHNICAL ASSISTANCE	Contingent upon Contract Administrator	N
HHL602	T	\$ 25,364	O	\$ 28,139	\$ 2,775.00	9/29/2004			WAIIMEA HAWAIIAN HOMESTEADERS'	S	PUUKAPU PASTROAL WATER GROUP	Contingent upon Contract Administrator	N
HHL602	T	\$ 28,500	O	\$ 30,000	\$ 1,500.00	6/30/2004			WAIQHULI HAWAIIAN HOMESTEADERS	S	GRANT FOR THE NEIGHBORHOOD SECURITY PATROL	Contingent upon Contract Administrator	N
HHL602	T	\$ 45,453	O	\$ 75,000	\$ 29,546.77	12/2/2004			SMS RESEARCH AND MARKETING	S	DATA ANALYSIS & SPECIAL REPORT	Contingent upon Contract Administrator	N
HHL602	N	\$ 39,500	O	\$ 59,500	\$ 20,000.00	12/28/2004			AKINAKA & ASSOCIATES, LTD.	S	LAIOPUA VILLAGE WATER MASTER PLAN & VILLAGE 5	Contingent upon Contract Administrator	N
HHL602	T	\$ 217,691	O	\$ 232,588	\$ 14,896.58	12/28/2004			AKINAKA & ASSOCIATES, LTD.	S	LAIOPUA VILLAGE WATER MASTER PLAN & VILLAGE 5	Contingent upon Contract Administrator	N

Department of Hawaiian Home Lands
Active Contracts as of December 1, 2014

Table 20

Prog ID	MOF	Amount	(M/A/D)	Max Value	Outstanding Balance	Date Executed	From	To	Organization	E/L/P/C/ G/S	Description	Explanation of How Contract is Monitored	POS Y/N
HHL602	T	\$ 71,540	O	\$ 75,000	\$ 3,460.07	2/25/2005			STRATAVIZION CONSULTING GROUP, KOMETANI, JAMES, INC.	S	FEDERAL PROGRAM IMPLEMENTATION LETTER OF RANKING SELECTION LETTER.	Contingent upon Contract Administrator	N
HHL602	T	\$ 713,979	O	\$ 950,600	\$ 236,620.88	5/31/2005			MUNEKIYO & HIRAGA, INC.	S	KAPOLEI VILLAGE 8, VILLAGES OF KAPOLEI	Contingent upon Contract Administrator	N
HHL602	T	\$ 102,448	O	\$ 107,500	\$ 5,051.95	6/16/2005			MUNEKIYO & HIRAGA, INC.	S	PROFESSIONAL SVCS 1 OPTION TO EXTEND FOR 6 MOS EACH.	Contingent upon Contract Administrator	N
HHL602	T	\$ -	O	\$ 150,000	\$ 150,000.00	6/16/2005			MUNEKIYO & HIRAGA, INC.	S	PROFESSIONAL SVCS 1 OPTION TO EXTEND FOR 6 MOS EACH.	Contingent upon Contract Administrator	N
HHL602	T	\$ 230,059	O	\$ 236,690	\$ 6,631.46	10/17/2005			UNIVERSITY OF HAWAII	S	AGRICULTURE EDUCATION PROGRAM.	Contingent upon Contract Administrator	N
HHL602	T	\$ 56,300	O	\$ 98,925	\$ 42,625.00	6/28/2006			KEAUKAHA COMMUNITY ASSOCIATION	S	NATIVE HAWAIIAN DEVELOPMENT PROGRAM(2 YRS CONTRACT).	Contingent upon Contract Administrator	N
HHL602	T	\$ 20,076	O	\$ 38,989	\$ 18,913.00	11/16/2006			COASTAL CONSTRUCTION	S	KAUPEA THE VILLAGES OF KAPOLEI VILLAGE 8, PHASE 3	Contingent upon Contract Administrator	N
HHL602	C	\$ 1,177,375	O	\$ 1,198,000	\$ 20,625.00	11/27/2006			NANAKULI HAWAIIAN HOMESTEAD	S	NHHCA COMMUNITY CENTER GRANT GOVERNOR'S APPROVAL	Contingent upon Contract Administrator	N
HHL602	T	\$ 4,237,033	O	\$ 4,649,940	\$ 412,906.78	12/1/2006			ISEMOTO CONTRACTING CO., LTD.	S	KAWAIHAE 1.0 MILLION GALLON TANK, PHASE 2.	Contingent upon Contract Administrator	N
HHL602	T	\$ 133,803	O	\$ 147,750	\$ 13,946.88	12/20/2006			GEOLABS, INC.	S	PIILANI MAI KE KAI PHASE 1	Contingent upon Contract Administrator	N
HHL602	C	\$ 895,000	O	\$ 900,000	\$ 5,000.00	12/27/2006			WAIMANALO HAWAIIAN HOMES	S	FUNDS TO DESIGN AND CONSTRUCT A KITCHEN AND TECHNOLOGY CENTER AT THE	Contingent upon Contract Administrator	N
HHL602	T	\$ 27,000	O	\$ 45,000	\$ 18,000.00	2/2/2007			AHUPUA'A O MOLOKAI	S	COMMUNITY PROJECTS & PROGRAMS PLANNED FOR 2007 & 2008	Contingent upon Contract Administrator	N
HHL602	T	\$ 118,873	O	\$ 119,520	\$ 647.00	2/22/2007			AQUA ENGINEERS, INC.	S	IFB-07-029-K OPERATION & MAINTENANCE OF ANAHOLA/PUU OPAE WATER ON KAUAI	Contingent upon Contract Administrator	N
HHL602	T	\$ 7,687	O	\$ 50,000	\$ 42,313.29	3/7/2007			ASHFORD & WRISTON LLP	C	PROVIDE LEGAL SERVICES/WAL-MART LEASE	Contingent upon Contract Administrator	N
HHL602	T	\$ 23,589	O	\$ 25,000	\$ 1,410.89	3/20/2007			ORNELLAS, WILLIAM P.	S	PROFESSIONAL SERVICES CONTESTED CASE HEARINGS W/ OPTION TO EXTEND FOR	Contingent upon Contract Administrator	N
HHL602	T	\$ 54,488	O	\$ 54,588	\$ 100.00	3/28/2007			BISEL, LEONARD ASSOCIATES, LLC	S	VILLAGES OF LAIOPUA PLANT MITIGATION & PRESERVE OPT TO EXTEND 4-21 MOS.	Contingent upon Contract Administrator	N
HHL602	N	\$ 12,997	O	\$ 13,000	\$ 3.42	3/28/2007			BISEL, LEONARD ASSOCIATES, LLC	S	VILLAGES OF LAIOPUA PLANT MITIGATION & PRESERVE OPT TO EXTEND 4-21 MOS.	Contingent upon Contract Administrator	N
HHL602	T	\$ 91,333	O	\$ 100,000	\$ 8,666.70	6/22/2007			TIBER CREEK ASSOCIATES	S	PROFESSIONAL SERVICES NAHASDA PROGRAM.	Contingent upon Contract Administrator	N
HHL602	T	\$ 252,100	O	\$ 263,250	\$ 11,149.61	1/7/2007			PRIMARY PROPERTIES, INC.	S	MARKETING CONSULTANT - EAST KAPOLEI I PROJECT	Contingent upon Contract Administrator	N
HHL602	T	\$ -	O	\$ 84,575	\$ 84,575.00	1/7/2007			PRIMARY PROPERTIES, INC.	S	MARKETING CONSULTANT - EAST KAPOLEI I PROJECT	Contingent upon Contract Administrator	N
HHL602	T	\$ -	O	\$ 9,950	\$ 9,950.00	1/7/2007			PRIMARY PROPERTIES, INC.	S	MARKETING CONSULTANT - EAST KAPOLEI I PROJECT	Contingent upon Contract Administrator	N
HHL602	T	\$ 106,049	O	\$ 142,260	\$ 36,210.93	1/15/2008			PRIMARY PROPERTIES, INC.	S	WAIMANALO KAPUNA PROJECT FOR MARKETING SERVICES	Contingent upon Contract Administrator	N

Department of Hawaiian Home Lands
Active Contracts as of December 1, 2014

Table 20

Prog ID	MOF	Amount	(M/A/O)	Max Value	Outstanding Balance	Date Executed	From	To	Organization	E/L/P/C/ G/S	Description	Explanation of How Contract is Monitored	POS Y/N
HHL602	N	\$ 123,670	O	\$ 131,079	\$ 7,409.11	2/11/2008			ANAHOLA HAWAIIAN HOMES	S	ANAHOLA COMMUNITY EMPOWERMENT	Contingent upon Contract Administrator	N
HHL602	T	\$ 163,453	O	\$ 340,000	\$ 176,547.49	3/19/2008			KOMETANI, JAMES, INC.	S	KEOKEA WAIOHULI DEVELOPMENT PHASE 1	Contingent upon Contract Administrator	N
HHL602	A	\$ 39,579	O	\$ 75,000	\$ 35,421.10	4/2/2008			WATANABE ING, LLP	C	LEGAL SERVICES, RICHARD NELSON III VS HHC	Contingent upon Contract Administrator	N
HHL602	T	\$ 2,765,198	O	\$ 2,765,611	\$ 412.84	4/10/2008			CTS EARTHMOVING, INC.	S	LAIOPUA VILLAGES UNITE &5 IFB-08-HHL-008.	Contingent upon Contract Administrator	N
HHL602	N	\$ 623,629	O	\$ 624,000	\$ 371.33	4/10/2008			CTS EARTHMOVING, INC.	S	LAIOPUA VILLAGES UNITE &5 IFB-08-HHL-008.	Contingent upon Contract Administrator	N
HHL602	N	\$ 10,040	O	\$ 14,000	\$ 3,960.03	4/10/2008			CTS EARTHMOVING, INC.	S	LAIOPUA VILLAGES UNITE &5 IFB-08-HHL-008.	Contingent upon Contract Administrator	N
HHL602	T	\$ 2,262,210	O	\$ 2,294,772	\$ 32,562.20	4/29/2008			SHIOI CONSTRUCTION, INC.	S	KEKAHA RES LOTS UNIT 4	Contingent upon Contract Administrator	N
HHL602	T	\$ 29,633	O	\$ 36,700	\$ 7,067.00	6/2/2008			CHILD, JOHN & COMPANY, INC.	S	APPRAISAL SVCS EWA DRUM & VARONA VILLAGE PROPERTIES OPT TO EXTEND 2 MOS.	Contingent upon Contract Administrator	N
HHL602	T	\$ 44,467	O	\$ 66,390	\$ 21,923.43	6/3/2008			CONSTRUCTION ENGINEERING LABS,	S	LALAMILO PHASE 1	Contingent upon Contract Administrator	N
HHL602	T	\$ 155,417	O	\$ 165,014	\$ 9,596.67	6/4/2008			OKAHARA & ASSOCIATES, INC.	S	LALAMILO PHASE I	Contingent upon Contract Administrator	N
HHL602	N	\$ 151,551	O	\$ 158,000	\$ 6,448.78	6/20/2008			SMS RESEARCH AND MARKETING	S	BENEFICIARY STUDY FOR 2008.	Contingent upon Contract Administrator	N
HHL602	T	\$ 287,999	O	\$ 320,000	\$ 32,000.65	6/25/2008			PBR HAWAII & ASSOCIATES, INC.	S	REGIONAL PLANNING PANAWEA KEAUKAHA & KAWAIHAE / W/ 2 OPTIONS TO EXTEND	Contingent upon Contract Administrator	N
HHL602	T	\$ 12,826	O	\$ 20,000	\$ 7,174.00	8/18/2009			SHIOI CONSTRUCTION, INC.	S	LANAI SCATTERED LOTS PHASE 1 & 2A / RFP-08-HHL-013	Contingent upon Contract Administrator	N
HHL602	T	\$ 8,837,760	O	\$ 9,590,575	\$ 752,815.24	8/20/2008			COASTAL CONSTRUCTION	S	LALAMILO PHASE 1	Contingent upon Contract Administrator	N
HHL602	T	\$ 27,619	O	\$ 32,182	\$ 4,563.50	9/2/2008			ORNELLAS, DANIEL L.	S	LANDSCAPE MAINTENANCE LEIALII PARKWAY; RFP-08-HHL-018; MAY BE EXTENDED	Contingent upon Contract Administrator	N
HHL602	T	\$ 84,173	O	\$ 84,200	\$ 27.00	9/2/2008			ORNELLAS, DANIEL L.	S	LANDSCAPE MAINTENANCE WAIHEHU KOU PHASE 2, 3, & 4; RFP08-HHL-014; MAY BE	Contingent upon Contract Administrator	N
HHL602	T	\$ 48,135	O	\$ 56,570	\$ 8,435.20	9/23/2008			WATER CONTROLS	S	LEIALII PH 1 A MAINTENANCE, LEIALII WATER SYSTEM OPT TO EXTEND 12MOS.	Contingent upon Contract Administrator	N
HHL602	T	\$ 66,225	O	\$ 79,222	\$ 12,996.88	10/1/2008			VALLEY ISLE PUMPING, INC.	S	OPERATION & MAINTENANCE, SEWER PUMP STATION @ WAIHEHU KOU	Contingent upon Contract Administrator	N
HHL602	T	\$ -	O	\$ 24,222	\$ 24,222.00	10/1/2008			VALLEY ISLE PUMPING, INC.	S	OPERATION & MAINTENANCE, SEWER PUMP STATION @ WAIHEHU KOU	Contingent upon Contract Administrator	N
HHL602	T	\$ -	O	\$ 45,000	\$ 45,000.00	10/1/2008			VALLEY ISLE PUMPING, INC.	S	OPERATION & MAINTENANCE, SEWER PUMP STATION @ WAIHEHU KOU	Contingent upon Contract Administrator	N
HHL602	T	\$ 508,771	O	\$ 647,000	\$ 138,229.36	10/3/2008			AKINAKA & ASSOCIATES, LTD.	S	LAIOPUA VILLAGE 2 CONSULTANT PLANNING SURVEYING & ENGINEERING SVCS	Contingent upon Contract Administrator	N

Department of Hawaiian Home Lands
Active Contracts as of December 1, 2014

Table 20

Prog ID	MOF	Amount	[M/A/O]	Max Value	Outstanding Balance	Date Executed	From	To	Organization	E/L/P/C/ G/S	Description	Explanation of How Contract is Monitored	POS Y/N
HHL602	N	\$ 128,508	O	\$ 161,000	\$ 32,491.56	10/3/2008			AKINAKA & ASSOCIATES, LTD.	S	LAIOPIUA VILLAGE 2 CONSULTANT PLANNING SURVEYING & ENGINEERING SVCS	Contingent upon Contract Administrator	N
HHL602	T	\$ 31,896	O	\$ 52,439	\$ 20,542.48	11/5/2008			AQUA ENGINEERS, INC.	S	ANAHOLA RES. LOTS UNIT 6 PREPARE WATEWATER SYSTEM DESIGNS.	Contingent upon Contract Administrator	N
HHL602	T	\$ -	O	\$ 425	\$ 425.00	11/5/2008			AQUA ENGINEERS, INC.	S	ANAHOLA RES. LOTS UNIT 6 PREPARE WATEWATER SYSTEM DESIGNS.	Contingent upon Contract Administrator	N
HHL602	T	\$ 41,661	O	\$ 70,000	\$ 28,338.55	11/26/2008			AMEMIYA, KEITH Y.	C	CONTESTED CASE HEARINGS OFFICER	Contingent upon Contract Administrator	N
HHL602	T	\$ 27,094	O	\$ 49,015	\$ 21,920.95	12/19/2008			ASHFORD & WRISTON LLP	C	LEGAL SERVICES, GENERAL LEASE AGREEMENTS	Contingent upon Contract Administrator	N
HHL602	T	\$ 46,403	O	\$ 83,000	\$ 36,597.37	1/5/2009			GENESYS DESIGN GROUP INC.	S	ARCHITECTURAL & ENGINEERING SVCS FOR LALAMILO HOUSING PHASE1 PROJECT.	Contingent upon Contract Administrator	N
HHL602	B	\$ -	O	\$ 6,000	\$ 6,000.00	2/12/2009			BLX GROUP LLC	S	BOND ARBITRAGE REBATE CALCULATIONS OPT TO EXTEND 2-12 MOS.	Contingent upon Contract Administrator	N
HHL602	B	\$ 1,000	O	\$ 2,000	\$ 1,000.00	2/12/2009			BLX GROUP LLC	S	BOND ARBITRAGE REBATE CALCULATIONS OPT TO EXTEND 2-12 MOS.	Contingent upon Contract Administrator	N
HHL602	B	\$ -	O	\$ 2,000	\$ 2,000.00	2/12/2009			BLX GROUP LLC	S	BOND ARBITRAGE REBATE CALCULATIONS OPT TO EXTEND 2-12 MOS.	Contingent upon Contract Administrator	N
HHL602	N	\$ 69,450	O	\$ 285,700	\$ 216,249.78	3/20/2009			HABITAT FOR HUMANITY	S	WAIOHULI PHASE 2 RENOVATIONS, SELF HELP METHOD.	Contingent upon Contract Administrator	N
HHL602	T	\$ 2,157,559	O	\$ 2,259,077	\$ 101,517.88	5/8/2009			COASTAL CONSTRUCTION	S	CONSTRUCTION:PIILANI MAI ME KAI PHASE 1.	Contingent upon Contract Administrator	N
HHL602	T	\$ 158,200	O	\$ 160,000	\$ 1,800.00	6/24/2009			GROUP 70 INTERNATIONAL, INC.	S	PLANNING OAHU REGIONAL PLANS NEW PLANS & UPDATES 3 OPT TO EXTEND 6 MOS.	Contingent upon Contract Administrator	N
HHL602	T	\$ 50,000	O	\$ 110,000	\$ 60,000.00	6/24/2009			GROUP 70 INTERNATIONAL, INC.	S	PLANNING SUBSISTENCE HOMESTEADING PLANS KAHIKINUI & KING'S LANDING	Contingent upon Contract Administrator	N
HHL602	T	\$ 74,133	O	\$ 100,000	\$ 25,867.23	6/24/2009			MUNEKIYO & HIRAGA, INC.	S	PLANNING:MAUI REGIONAL PLANS/NEW PLANS & UPDATES/ W/3 OPTIONS TO EXTEND	Contingent upon Contract Administrator	N
HHL602	T	\$ 62,500	O	\$ 75,000	\$ 12,500.00	6/24/2009			PBR HAWAII & ASSOCIATES, INC.	S	PLANNING:HAWAII REGIONAL PLAN UPDATES/W/3 OPTIONS TO EXTEND FOR 6 MONTHS	Contingent upon Contract Administrator	N
HHL602	T	\$ 5,916	O	\$ 25,000	\$ 19,083.77	6/30/2009			SMS RESEARCH AND MARKETING	C	EXPERT WITNESS / WITNESS/CONSULTANT KALIMA ET AL VS. STATE OF HAWAII.	Contingent upon Contract Administrator	N
HHL602	T	\$ 43,093	O	\$ 60,000	\$ 16,907.00	7/2/2009			COUNCIL FOR NATIVE HAWAIIAN	S	TRAINING NONPROFIT ORGANIZATIONAL ASSESSMENTS OPT TO 1 YR.	Contingent upon Contract Administrator	N
HHL602	T	\$ -	O	\$ 10,000	\$ 10,000.00	7/2/2009			COUNCIL FOR NATIVE HAWAIIAN	S	TRAINING NONPROFIT ORGANIZATIONAL ASSESSMENTS OPT TO 1 YR.	Contingent upon Contract Administrator	N
HHL602	T	\$ 230,473	O	\$ 2,178,125	\$ 1,947,652.34	7/2/2009			COUNCIL FOR NATIVE HAWAIIAN	S	SELF HELP/ASSISTED OWNER BUILDER PROGRAM STRATEGY 2 OPT TO EXTEND 12MOS.	Contingent upon Contract Administrator	N
HHL602	T	\$ 47,140	O	\$ 63,000	\$ 15,860.21	7/23/2009			HAWAII ALLIANCE FOR COMMUNITY	S	TRAINING NONPROFIT ORGANIZATIONAL ASSESSMENTS OPT TO EXTEND 12 MOS.	Contingent upon Contract Administrator	N

Department of Hawaiian Home Lands
Active Contracts as of December 1, 2014

Table 20

Prog ID	MOF	Amount	(M/A/O)	Max Value	Outstanding Balance	Date Executed	From	To	Organization	E/L/P/C/ G/S	Description	Explanation of How Contract is Monitored	POS Y/N
HHL602	T	\$ 26,404	O	\$ 46,200	\$ 19,796.46	7/23/2009			HAWAII ALLIANCE FOR COMMUNITY	S	TRAINING NONPROFIT COMMUNITY ECONOMIC DEVELOPMENT OPT TO EXTEND 1 YR.	Contingent upon Contract Administrator	N
HHL602	T	\$ 52,371	O	\$ 53,800	\$ 1,428.55	8/18/2009			PACIFIC OHANA MASONRY AND	S	GROUND KEEPING SERVICES WAIEHU KAU PH 4; MAY BE EXTENDED FOR ONE ADDTL	Contingent upon Contract Administrator	N
HHL602	T	\$ 45,453	O	\$ 53,800	\$ 8,347.14	8/18/2009			PACIFIC OHANA MASONRY AND	S	GROUND KEEPING SERVICES AIEHU KAU PHASE 3; MAY BE EXTENDED FOR ONE ADDTL	Contingent upon Contract Administrator	N
HHL602	T	\$ 29,653	O	\$ 34,000	\$ 4,346.75	9/22/2009			PACIFIC OHANA MASONRY AND	S	WAIEHU KOU SUBDIVISION PHASE 4 RETENTION BASIC & ADJOURNING AREAS IFB	Contingent upon Contract Administrator	N
HHL602	T	\$ 34,350	O	\$ 38,800	\$ 4,449.70	9/22/2009			PACIFIC OHANA MASONRY AND	S	WAIEHU KOU SUBDIVISION PHASE 2 LANDSCAPE MAINTENANCE (NTP TO 06/30/11)	Contingent upon Contract Administrator	N
HHL602	T	\$ 2,992,930	O	\$ 2,993,930	\$ 1,000.00	12/15/2009			ISEMOTO CONTRACTING CO., LTD.	S	CONSTRUCTION PUUKAPU HYBRID WATER SYSTEM PROJECT	Contingent upon Contract Administrator	N
HHL602	T	\$ 124,625	O	\$ 143,342	\$ 18,717.00	12/15/2009			ISEMOTO CONTRACTING CO., LTD.	S	CONSTRUCTION PUUKAPU HYBRID WATER SYSTEM PROJECT	Contingent upon Contract Administrator	N
HHL602	T	\$ -	O	\$ 63,072	\$ 63,072.00	12/15/2009			ISEMOTO CONTRACTING CO., LTD.	S	CONSTRUCTION PUUKAPU HYBRID WATER SYSTEM PROJECT	Contingent upon Contract Administrator	N
HHL602	B	\$ 14,804	O	\$ 39,738	\$ 24,934.34	12/29/2009			EDWARD ENTERPRISES, INC.	S	PRINTING, DELIVERING & MAILING OF KANUHOU IFB-10-HHL-006. OPT TO EXTEND	Contingent upon Contract Administrator	N
HHL602	B	\$ -	O	\$ 39,738	\$ 39,738.22	12/29/2009			EDWARD ENTERPRISES, INC.	S	PRINTING, DELIVERING & MAILING OF KANUHOU IFB-10-HHL-006. OPT TO EXTEND	Contingent upon Contract Administrator	N
HHL602	T	\$ -	O	\$ 12,450	\$ 12,449.54	3/25/2010			GOODFELLOW BROS., INC.	S	DESIGN LALAMILO OFFSIT WATER SYSTEM 1.0 MG RESERVOIR	Contingent upon Contract Administrator	N
HHL602	T	\$ 57,222	O	\$ 62,423	\$ 5,201.90	4/28/2010			STAR PROTECTION AGENCY, LLC	S	INVESTIGATIVE SERVICES, BENEFICIARY LOCATOR MAY EXTENDED 1-12MOS.	Contingent upon Contract Administrator	N
HHL602	T	\$ 571,901	O	\$ 596,208	\$ 24,307.38	5/4/2010			HUNT BUILDING COMPANY, LTD	S	KAUPUNI VILLAGE HOME CONSTRUCTION	Contingent upon Contract Administrator	N
HHL602	T	\$ 179,006	O	\$ 181,800	\$ 2,794.12	5/12/2010			RIDER LEVETT BUCKNALL, LTD.	S	CONSTRUCTION MANAGEMENT SERVICES FOR CONSTRUCTION OF PUUKAPU HYBRID WATE	Contingent upon Contract Administrator	N
HHL602	T	\$ 1,975	O	\$ 18,135	\$ 16,160.43	5/12/2010			RIDER LEVETT BUCKNALL, LTD.	S	CONSTRUCTION MANAGEMENT SERVICES FOR CONSTRUCTION OF PUUKAPU HYBRID WATE	Contingent upon Contract Administrator	N
HHL602	T	\$ 26,574	O	\$ 103,552	\$ 76,977.58	6/7/2010			HAWAII FOREST INDUSTRY	S	DESIGN LAIOPUA PLANT MITIGATION OPT TO EXTEND 2-24MOS.	Contingent upon Contract Administrator	N
HHL602	T	\$ 51,480	O	\$ 123,000	\$ 71,519.67	6/1/2010			HAWAII ALLIANCE OF NONPROFIT	S	EDUCATION & TRAINING HOMESTEAD ASSOCIATIONS OPT TO EXTEND 2-12 MOS.	Contingent upon Contract Administrator	N
HHL602	T	\$ 905,404	O	\$ 911,376	\$ 5,972.00	6/14/2010			ARMSTRONG BUILDERS, LLC	S	CONSTRUCTION KUMUHAU SUBDIVISION WAIMANALO	Contingent upon Contract Administrator	N
HHL602	T	\$ 20,594	O	\$ 50,000	\$ 29,405.76	6/16/2010			PAPAKOLEA COMMUNITY	S	DHHL HOMESTEAD CAPACITY BLDG TRAINING	Contingent upon Contract Administrator	N

Department of Hawaiian Home Lands
Active Contracts as of December 1, 2014

Table 20

Prog ID	MOF	Amount	(M/A/O)	Max Value	Outstanding Balance	Date Executed	From	To	Organization	E/L/P/C/G/S	Description	Explanation of How Contract is Monitored	POS Y/N
HHL602	C	\$ 885,229	O	\$ 1,108,705	\$ 223,475.68	6/22/2010			HONOLULU BUILDERS, LLC	S	DESIGN:LALAMILO OFFSITE WATER SYSTEM IFB-09-HHL-023.	Contingent upon Contract Administrator	N
HHL602	T	\$ 51,000	O	\$ 60,000	\$ 9,000.00	6/30/2010			PBR HAWAII & ASSOCIATES, INC.	S	DEVELOP AN ISLAND PLAN FOR OAHU	Contingent upon Contract Administrator	N
HHL602	T	\$ 14,385	O	\$ 25,000	\$ 10,615.05	7/7/2010			MUNEKIYO & HIRAGA, INC.	S	DEVELOP A MASTER PLAN FOR PUUNENE MAUI	Contingent upon Contract Administrator	N
HHL602	T	\$ 47,500	O	\$ 200,000	\$ 152,500.00	8/12/2010			ZELL & COX LAW, P.C.	S	CONSULTANT RENEWABLE ENERGY DEVELOPMENT.	Contingent upon Contract Administrator	N
HHL602	T	\$ 425,277	O	\$ 460,250	\$ 34,973.00	8/26/2010			ARMSTRONG LAIOPUA VILLAGE 5,	S	CONSTRUCTION LAIOPUA VILLAGE 5	Contingent upon Contract Administrator	N
HHL602	T	\$ 971,858	O	\$ 1,820,269	\$ 848,410.89	10/20/2010			PBR HAWAII & ASSOCIATES, INC.	S	COMMUNITY PLANNING CONSULTANT FOR MASTER PLANNING	Contingent upon Contract Administrator	N
HHL602	T	\$ 16,082	O	\$ 40,000	\$ 23,918.36	11/4/2010			NISHIMURA, ALVIN	C	PROFESSIONAL SERVICES CONTESTED CASE HEARINGS OFFICER	Contingent upon Contract Administrator	N
HHL602	T	\$ 1,669	O	\$ 3,038	\$ 1,368.80	11/8/2010			INTEGRATED CONSTRUCTION, INC.	S	KUMUHAU SITE CONSTRUCTION IFB-11-HHL-008	Contingent upon Contract Administrator	N
HHL602	C	\$ -	O	\$ 26,000	\$ 26,000.00	12/30/2010			LA'IOPUA 2020	S	PLANNING & DESIGN FOR LA'IOPUA COMMUNITY CENTER / 42F GRANT / GOVERNOR'	Contingent upon Contract Administrator	N
HHL602	C	\$ 1,148,110	O	\$ 1,500,000	\$ 351,890.00	12/30/2010			LA'IOPUA 2020	S	PLANNING & DESIGN FOR LA'IOPUA COMMUNITY CENTER / 42F GRANT / GOVERNOR'	Contingent upon Contract Administrator	N
HHL602	T	\$ 194,371	O	\$ 200,000	\$ 5,629.44	2/3/2011			UNIVERSITY OF HAWAII	S	AGRICULTURAL EDUCATION PROGRAM.	Contingent upon Contract Administrator	N
HHL602	T	\$ 1,047,247	O	\$ 1,081,000	\$ 33,753.48	2/11/2011			SSFM INTERNATIONAL, INC.	S	CONSTRUCTION MANAGEMENT SERVICES - CONSTRUCTION LALAMILO DEVELOPMENT	Contingent upon Contract Administrator	N
HHL602	T	\$ 396,824	O	\$ 408,640	\$ 11,816.00	2/11/2011			SSFM INTERNATIONAL, INC.	S	CONSTRUCTION MANAGEMENT SERVICES - CONSTRUCTION LALAMILO DEVELOPMENT	Contingent upon Contract Administrator	N
HHL602	T	\$ 119,185	O	\$ 120,600	\$ 1,415.00	2/11/2011			SSFM INTERNATIONAL, INC.	S	CONSTRUCTION MANAGEMENT SERVICES - CONSTRUCTION LALAMILO DEVELOPMENT	Contingent upon Contract Administrator	N
HHL602	T	\$ -	O	\$ 177,430	\$ 177,430.00	2/11/2011			SSFM INTERNATIONAL, INC.	S	CONSTRUCTION MANAGEMENT SERVICES - CONSTRUCTION LALAMILO DEVELOPMENT	Contingent upon Contract Administrator	N
HHL602	T	\$ 96,497	O	\$ 98,500	\$ 2,003.36	2/15/2011			HO'OKULEANA LLC	S	ENVIRONMENTAL ASSESSMENT AINA MAUNA PROGRAM.	Contingent upon Contract Administrator	N
HHL602	T	\$ 106,669	O	\$ 288,024	\$ 181,354.59	4/14/2011			AQUA ENGINEERS, INC.	S	OPERATION & MAINTENANCE ANAHOLA WATER SYSTEM. OPT TO EXTEND 1-36MOS.	Contingent upon Contract Administrator	N
HHL602	T	\$ 19,419	O	\$ 448,024	\$ 428,605.04	4/14/2011			AQUA ENGINEERS, INC.	S	OPERATION & MAINTENANCE ANAHOLA WATER SYSTEM. OPT TO EXTEND 1-36MOS.	Contingent upon Contract Administrator	N
HHL602	T	\$ 640,533	O	\$ 693,580	\$ 53,047.70	5/10/2011			LEE, R. H. S., INC.	S	EAST KAPOLEI II, FORMER PESTICIDE MIXING & LOADING PLANT SITE REMEDIATIO	Contingent upon Contract Administrator	N
HHL602	T	\$ -	O	\$ 42,450	\$ 42,450.42	5/10/2011			LEE, R. H. S., INC.	S	EAST KAPOLEI II, FORMER PESTICIDE MIXING & LOADING PLANT SITE REMEDIATIO	Contingent upon Contract Administrator	N

Department of Hawaiian Home Lands
Active Contracts as of December 1, 2014

Table 20

Prog ID	MOF	Amount	(M/A/O)	Max Value	Outstanding Balance	Date Executed	From	To	Organization	E/L/P/C/ G/S	Description	Explanation of How Contract is Monitored	POS Y/N
HHL602	T	\$ 149,363	O	\$ 149,999	\$ 636.45	6/30/2011			SMS RESEARCH AND MARKETING	S	2011 DHHL BENEFICIARY SURVEY	Contingent upon Contract Administrator	N
HHL602	T	\$ -	O	\$ 35,000	\$ 35,000.00	6/30/2011			SMS RESEARCH AND MARKETING	S	2011 DHHL BENEFICIARY SURVEY	Contingent upon Contract Administrator	N
HHL602	N	\$ 115,087	O	\$ 180,177	\$ 65,090.38	7/18/2011			COUNCIL FOR NATIVE HAWAIIAN	S	HOMESTEAD ENERGY PROGRAM(HEP)-NAHASDA GRANT.	Contingent upon Contract Administrator	N
HHL602	N	\$ 16,639	O	\$ 37,800	\$ 21,161.04	7/19/2011			PBR HAWAII & ASSOCIATES, INC.	S	ENVIRONMENTAL ENGINEERING & ENVIRONMENT REVIEW SERVICES - STATEWIDE	Contingent upon Contract Administrator	N
HHL602	T	\$ 239,061	O	\$ 295,140	\$ 56,078.65	7/22/2011			AKINAKA & ASSOCIATES, LTD.	S	ENGINEERING SVCS FOR PUUKAPU PASTORAL LOTS SUBDIVISION WATER SYSTEM	Contingent upon Contract Administrator	N
HHL602	T	\$ 212,500	O	\$ 250,000	\$ 37,500.00	7/25/2011			WAIMANALO HAWAIIAN HOMES	S	GRANT FUNDS FOR WAIMANALO COMMUNITY TECHNOLOGY, EDUCATION & EMPLOYMENT	Contingent upon Contract Administrator	N
HHL602	T	\$ 866,179	O	\$ 1,075,128	\$ 208,948.74	8/3/2011			ENGINEERS SURVEYORS HAWAII,	S	PROFESSIONAL ENGINEERING SVCS FOR VILLAGE 4, VILLAGES OF LAIOPUA PHASE1.	Contingent upon Contract Administrator	N
HHL602	N	\$ 140,362	O	\$ 268,000	\$ 127,638.16	8/3/2011			ENGINEERS SURVEYORS HAWAII,	S	PROFESSIONAL ENGINEERING SVCS FOR VILLAGE 4, VILLAGES OF LAIOPUA PHASE1.	Contingent upon Contract Administrator	N
HHL602	T	\$ -	O	\$ 6,355	\$ 6,355.00	8/3/2011			ENGINEERS SURVEYORS HAWAII,	S	PROFESSIONAL ENGINEERING SVCS FOR VILLAGE 4, VILLAGES OF LAIOPUA PHASE1.	Contingent upon Contract Administrator	N
HHL602	T	\$ 7,088	O	\$ 100,000	\$ 92,912.00	8/17/2011			PLANPACIFIC, INC.	S	BASIC PLANNING SVCS TO IDENTIFY ALTERNATIVE HOUSING DEVELOPMENT MODELS	Contingent upon Contract Administrator	N
HHL602	T	\$ 410,641	O	\$ 922,065	\$ 511,424.50	8/29/2011			AECOM TECHNICAL SERVICES, INC.	S	PROFESSIONAL ENGINEERING SVCS FOR EXISTING DHHL HOMESTEADS & INFRASTURE	Contingent upon Contract Administrator	N
HHL602	T	\$ 394,609	O	\$ 474,948	\$ 80,339.10	9/9/2011			TOWILL, R. M. CORPORATION	S	ENGINEERING SERVICES FOR PUUKAPU PASTORAL LOTS WATER SYSTEM - SURVEYING	Contingent upon Contract Administrator	N
HHL602	T	\$ -	O	\$ 18,477	\$ 18,477.00	9/9/2011			TOWILL, R. M. CORPORATION	S	ENGINEERING SERVICES FOR PUUKAPU PASTORAL LOTS WATER SYSTEM - SURVEYING	Contingent upon Contract Administrator	N
HHL602	T	\$ 334,837	O	\$ 671,700	\$ 336,862.66	9/16/2011			ENGINEERS SURVEYORS HAWAII,	S	ENGINEERING SERVICES FOR MAKUU WELL #3088-01 PRODUCTION WELL(MAKUU OFFSI	Contingent upon Contract Administrator	N
HHL602	T	\$ -	O	\$ 37,000	\$ 37,000.00	9/16/2011			ENGINEERS SURVEYORS HAWAII,	S	ENGINEERING SERVICES FOR MAKUU WELL #3088-01 PRODUCTION WELL(MAKUU OFFSI	Contingent upon Contract Administrator	N
HHL602	T	\$ -	O	\$ 108,037	\$ 108,037.00	9/16/2011			ENGINEERS SURVEYORS HAWAII,	S	ENGINEERING SERVICES FOR MAKUU WELL #3088-01 PRODUCTION WELL(MAKUU OFFSI	Contingent upon Contract Administrator	N
HHL602	T	\$ 120,059	O	\$ 165,800	\$ 45,741.45	9/21/2011			IMUA LANDSCAPING CO., INC.	S	IFB-11-HHL-013 LANDSCAPE MAINTENANCE OF THE LEIALII PARKWAY, ISLAND OF	Contingent upon Contract Administrator	N
HHL602	T	\$ 71,274	O	\$ 165,800	\$ 94,526.00	9/21/2011			IMUA LANDSCAPING CO., INC.	S	IFB-11-HHL-013 LANDSCAPE MAINTENANCE OF THE LEIALII PARKWAY, ISLAND OF	Contingent upon Contract Administrator	N
HHL602	T	\$ 337,774	O	\$ 790,250	\$ 452,475.70	10/3/2011			AKINAKA & ASSOCIATES, LTD.	S	ENGINEERING SERVICES FOR VILLAGE 4, VILLAGES OF LAIOPUA PROJECT	Contingent upon Contract Administrator	N

Department of Hawaiian Home Lands
Active Contracts as of December 1, 2014

Table 20

Prog ID	MOF	Amount	(M/A/O)	Max Value	Outstanding Balance	Date Executed	From	To	Organization	E/L/P/C/ G/S	Description	Explanation of How Contract is Monitored	POS Y/N
HHL602	N	\$ 18,479	O	\$ 197,000	\$ 178,520.96	10/3/2011			AKINAKA & ASSOCIATES, LTD.	S	ENGINEERING SERVICES FOR VILLAGE 4, VILLAGES OF LAIOPIUA PROJECT	Contingent upon Contract Administrator	N
HHL602	T	\$ 306,161	O	\$ 367,413	\$ 61,251.66	10/7/2011			AUSTIN, TSUTSUMI & ASSOC., INC.	S	ENGINEERING SERVICES FOR VARIOUS MAUI SUBDIVISIONS(LEIALII, WAIIEHU KOU,	Contingent upon Contract Administrator	N
HHL602	T	\$ -	O	\$ 15,840	\$ 15,840.00	10/7/2011			AUSTIN, TSUTSUMI & ASSOC., INC.	S	ENGINEERING SERVICES FOR VARIOUS MAUI SUBDIVISIONS(LEIALII, WAIIEHU KOU,	Contingent upon Contract Administrator	N
HHL602	T	\$ -	O	\$ 46,797	\$ 46,797.00	10/7/2011			AUSTIN, TSUTSUMI & ASSOC., INC.	S	ENGINEERING SERVICES FOR VARIOUS MAUI SUBDIVISIONS(LEIALII, WAIIEHU KOU,	Contingent upon Contract Administrator	N
HHL602	T	\$ 48,000	O	\$ 50,000	\$ 2,000.00	10/7/2011			KEOKEA HOMESTEAD FARM LOTS	S	GRANT AGREEMENT FOR COMMUNITY PASTURE & TREE NURSERY PROJECT.	Contingent upon Contract Administrator	N
HHL602	T	\$ 109,167	O	\$ 399,000	\$ 289,832.53	10/10/2011			AUSTIN, TSUTSUMI & ASSOC., INC.	S	PROFESSIONAL ENGINEERING SVCS FOR KAWAIHAE PUBLIC WORKS PROJECTS OF THE	Contingent upon Contract Administrator	N
HHL602	T	\$ 30,488	O	\$ 90,000	\$ 59,512.36	10/21/2011			HOKE, RICHARD L, JR.	S	PROFESSIONAL SERVICES-CONTESTED CASE HEARINGS OFFICER	Contingent upon Contract Administrator	N
HHL602	T	\$ 20,864	O	\$ 29,000	\$ 8,136.00	1/24/2012			ESAKI SURVEYING AND MAPPING,	S	PLANNING & ENGINEERING SERVICES FOR PIILANI MAI KE KAI PHASEII SITE DESI	Contingent upon Contract Administrator	N
HHL602	T	\$ 56,201	O	\$ 158,000	\$ 101,799.32	1/27/2012			OKAHARA & ASSOCIATES, INC.	S	PROFESSIONAL ENGINEERING SERVICES FOR LALAMILO HOUSING, PHASE 1	Contingent upon Contract Administrator	N
HHL602	T	\$ 109,062	O	\$ 110,800	\$ 1,738.12	1/31/2012			IMUA LANDSCAPING CO., INC.	S	IFB-12-HHL-002 LANDSCAPE MAINTENANCE OF THE MALUOHAI, KAUPEA & KANEHILI	Contingent upon Contract Administrator	N
HHL602	A	\$ 60,347	O	\$ 110,800	\$ 50,453.43	1/31/2012			IMUA LANDSCAPING CO., INC.	S	IFB-12-HHL-002 LANDSCAPE MAINTENANCE OF THE MALUOHAI, KAUPEA & KANEHILI	Contingent upon Contract Administrator	N
HHL602	T	\$ 406,902	O	\$ 430,900	\$ 23,998.09	2/22/2012			COMMUNITY PLANNING AND	S	CONSTRUCTION MANAGEMENT SERVICES FOR EAST KAPOLEI II DEVELOPMENT, EAST-	Contingent upon Contract Administrator	N
HHL602	T	\$ 71,152	O	\$ 164,186	\$ 93,034.00	3/21/2012			AUSTIN, TSUTSUMI & ASSOC., INC.	S	SVCS FOR RESIDENTIAL, AGRICULTURAL & PASTORAL SURVEYS ON DHHL PROPERTIES	Contingent upon Contract Administrator	N
HHL602	T	\$ 143,834	O	\$ 205,989	\$ 62,155.42	4/11/2012			COLLABORATIVE STUDIO LLC	S	PROFESSIONAL ARCHITECTURAL SVCS FOR THE KAUAHALE PILOT PROJECT- KEAUKAHA,	Contingent upon Contract Administrator	N
HHL602	T	\$ 150,000	O	\$ 250,000	\$ 100,000.00	4/16/2012			NANAKULI HAWAIIAN HOMESTEAD	S	ECONOMIC DEVELOPMENT GRANT - KULIA I KA NU'U PROGRAM	Contingent upon Contract Administrator	N
HHL602	T	\$ 74,040	O	\$ 157,240	\$ 83,199.92	5/14/2012			VALLEY ISLE PUMPING, INC.	S	IFB-12-HHL-007:OPERATION & MAINTENANCE OF SEWER PUMP STATION AT WAIIEHU	Contingent upon Contract Administrator	N
HHL602	T	\$ 9,540	O	\$ 157,240	\$ 147,700.00	5/14/2012			VALLEY ISLE PUMPING, INC.	S	IFB-12-HHL-007:OPERATION & MAINTENANCE OF SEWER PUMP STATION AT WAIIEHU	Contingent upon Contract Administrator	N
HHL602	T	\$ 49,597	O	\$ 51,925	\$ 2,328.00	5/25/2012			PSC CONSULTANTS, LLC	S	GEOTECHNICAL MONITORING FOR EAST KAPOLEI II ROAD EXTENSION PS-12-LDD-008	Contingent upon Contract Administrator	N

Department of Hawaiian Home Lands
Active Contracts as of December 1, 2014

Table 20

Prog ID	MOE	Amount	(M/A/O)	Max Value	Outstanding Balance	Date Executed	From	To	Organization	E/L/P/C/G/S	Description	Explanation of How Contract is Monitored	POS Y/N
HHL602	T	\$ 3,551,930	O	\$ 4,628,229	\$ 1,076,299.41	6/5/2012			PARADIGM CONSTRUCTION LLC	S	IFB-12-HHL-001:CONSTRUCTION OF ON & OFF SITE INFRASTRUCTURE & LOT	Contingent upon Contract Administrator	N
HHL602	N	\$ 1,314,186	O	\$ 1,374,491	\$ 60,304.30	6/5/2012			PARADIGM CONSTRUCTION LLC	S	IFB-12-HHL-001:CONSTRUCTION OF ON & OFF SITE INFRASTRUCTURE & LOT	Contingent upon Contract Administrator	N
HHL602	T	\$ -	O	\$ 3,555	\$ 3,555.00	6/5/2012			PARADIGM CONSTRUCTION LLC	S	IFB-12-HHL-001:CONSTRUCTION OF ON & OFF SITE INFRASTRUCTURE & LOT	Contingent upon Contract Administrator	N
HHL602	T	\$ -	O	\$ 267,600	\$ 267,600.00	6/5/2012			PARADIGM CONSTRUCTION LLC	S	IFB-12-HHL-001:CONSTRUCTION OF ON & OFF SITE INFRASTRUCTURE & LOT	Contingent upon Contract Administrator	N
HHL602	T	\$ -	O	\$ 475,789	\$ 475,789.00	6/5/2012			PARADIGM CONSTRUCTION LLC	S	IFB-12-HHL-001:CONSTRUCTION OF ON & OFF SITE INFRASTRUCTURE & LOT	Contingent upon Contract Administrator	N
HHL602	T	\$ -	O	\$ 55,776	\$ 55,776.00	6/5/2012			PARADIGM CONSTRUCTION LLC	S	IFB-12-HHL-001:CONSTRUCTION OF ON & OFF SITE INFRASTRUCTURE & LOT	Contingent upon Contract Administrator	N
HHL602	T	\$ -	O	\$ 35,330	\$ 35,330.00	6/5/2012			PARADIGM CONSTRUCTION LLC	S	IFB-12-HHL-001:CONSTRUCTION OF ON & OFF SITE INFRASTRUCTURE & LOT	Contingent upon Contract Administrator	N
HHL602	T	\$ -	O	\$ 58,326	\$ 58,326.00	6/5/2012			PARADIGM CONSTRUCTION LLC	S	IFB-12-HHL-001:CONSTRUCTION OF ON & OFF SITE INFRASTRUCTURE & LOT	Contingent upon Contract Administrator	N
HHL602	T	\$ 32,513	O	\$ 121,875	\$ 89,362.50	6/15/2012			UNDERGROUND SERVICES, INC.	S	IFB-12-HHL-010:SEWAGE SPILL RESPONSE, ISLAND OF OAHU, STATE OF HAWAII	Contingent upon Contract Administrator	N
HHL602	T	\$ 52,968	O	\$ 250,000	\$ 197,032.36	6/21/2012			IMANAKA ASATO, LLLC	C	LEGAL SVCS FOR VARIOUS DHHL DEVELOPMENT PROJECTS OPT TO EXTEND 2-6MOS.	Contingent upon Contract Administrator	N
HHL602	C	\$ 100,772	O	\$ 1,050,000	\$ 949,228.05	6/29/2012			AUSTIN, TSUTSUMI & ASSOC., INC.	S	ENGINEERING SVCS FOR THE DESIGN OF THE HONOKAWAI WATER SYSTEM LOCATED AT	Contingent upon Contract Administrator	N
HHL602	T	\$ 6,898,789	O	\$ 8,644,630	\$ 1,745,841.29	6/29/2012			GOODFELLOW BROS., INC.	S	IFB-12-HHL-008 LALAMILO HOUSING PHASE 2A INCREMENT 1 & KAWAIHAE ROAD IMP	Contingent upon Contract Administrator	N
HHL602	N	\$ 1,695,303	O	\$ 2,161,158	\$ 465,854.58	6/29/2012			GOODFELLOW BROS., INC.	S	IFB-12-HHL-008 LALAMILO HOUSING PHASE 2A INCREMENT 1 & KAWAIHAE ROAD IMP	Contingent upon Contract Administrator	N
HHL602	T	\$ 69,341	O	\$ 73,723	\$ 4,382.00	7/26/2012			ARMSTRONG HAWAIIAN HOMES LLC	S	RFP-11-HHL-003 SINGLE-FAMILY HOMES AT VARIOUS MAUI SUBDIVISIONS.	Contingent upon Contract Administrator	N
HHL602	T	\$ 315,290	O	\$ 335,579	\$ 20,289.00	7/26/2012			ARMSTRONG HAWAIIAN HOMES LLC	S	RFP-11-HHL-003 SINGLE-FAMILY HOMES AT VARIOUS MAUI SUBDIVISIONS.	Contingent upon Contract Administrator	N
HHL602	T	\$ 6,781,442	O	\$ 6,792,156	\$ 10,713.27	9/5/2012			PARADIGM CONSTRUCTION LLC	S	IFB-12-HHL-004: EAST KAPOLEI II DEVELOPMENT, ROAD E EXTENSION,	Contingent upon Contract Administrator	N
HHL602	T	\$ 12,159	O	\$ 17,688	\$ 5,529.19	9/5/2012			PARADIGM CONSTRUCTION LLC	S	IFB-12-HHL-004: EAST KAPOLEI II DEVELOPMENT, ROAD E EXTENSION,	Contingent upon Contract Administrator	N
HHL602	T	\$ -	O	\$ 26,652	\$ 26,651.55	9/5/2012			PARADIGM CONSTRUCTION LLC	S	IFB-12-HHL-004: EAST KAPOLEI II DEVELOPMENT, ROAD E EXTENSION,	Contingent upon Contract Administrator	N
HHL602	T	\$ -	O	\$ 20,000	\$ 20,000.00	9/5/2012			PARADIGM CONSTRUCTION LLC	S	IFB-12-HHL-004: EAST KAPOLEI II DEVELOPMENT, ROAD E EXTENSION,	Contingent upon Contract Administrator	N

Department of Hawaiian Home Lands
Active Contracts as of December 1, 2014

Table 20

Prog ID	MOF	Amount	(M/A/O)	Max Value	Outstanding Balance	Date Executed	From	To	Organization	E/L/P/C/ G/S	Description	Explanation of How Contract is Monitored	POS Y/N
HHL602	T	\$ 175,046	O	\$ 293,154	\$ 118,108.53	9/11/2012			TANAKA, R.T. ENGINEERS, INC.	S	PROFESSIONAL ENGINEERING SERVICES FOR LOWER KULA BYPASS WATERLINE	Contingent upon Contract Administrator	N
HHL602	T	\$ 803,252	O	\$ 835,000	\$ 31,748.26	9/21/2012			SSFM INTERNATIONAL, INC.	S	CONSTRUCTION MANAGEMENT SVCS FOR EAST KAPOLEI II, ROAD E EXTENSION	Contingent upon Contract Administrator	N
HHL602	T	\$ 482,681	O	\$ 500,000	\$ 17,319.31	10/3/2012			COMMUNITY PLANNING AND	S	LALAMILO HOUSING PHASE 2A DEVELOPMENT, INCLUDING DESIGN SUPPORT SVCS	Contingent upon Contract Administrator	N
HHL602	T	\$ 172,522	O	\$ 347,862	\$ 175,340.13	10/3/2012			COMMUNITY PLANNING AND	S	LALAMILO HOUSING PHASE 2A DEVELOPMENT, INCLUDING DESIGN SUPPORT SVCS	Contingent upon Contract Administrator	N
HHL602	T	\$ 3,351,395	O	\$ 3,437,329	\$ 85,933.21	10/18/2012			EARTHWORKS PACIFIC, INC.	S	IFB-12-HHL-013 GRADING & CONSTRUCTION OF ROADS & UTILITY IMPR. FOR A 51	Contingent upon Contract Administrator	N
HHL602	T	\$ 62,478	O	\$ 77,000	\$ 14,522.00	10/18/2012			EARTHWORKS PACIFIC, INC.	S	IFB-12-HHL-013 GRADING & CONSTRUCTION OF ROADS & UTILITY IMPR. FOR A 51	Contingent upon Contract Administrator	N
HHL602	B	\$ -	O	\$ 23,832	\$ 23,832.44	11/14/2012			HAGADONE PRINTING COMPANY, INC	S	IFB-12-HHL-014. PRINTING, DELIVERING & MAILING OF KA NUHOU FOR HHL	Contingent upon Contract Administrator	N
HHL602	N	\$ 278,847	O	\$ 328,850	\$ 50,002.88	12/5/2012			NANAKULI HOUSING CORPORATION	S	HOLOMUA I NA'AU'AO: SELF HELP HOME REPAIR/REPLACEMENT & HOME MAINTENANCE	Contingent upon Contract Administrator	N
HHL602	T	\$ 367,926	O	\$ 395,000	\$ 27,074.46	12/10/2012			SSFM INTERNATIONAL, INC.	S	CONSTRUCTION MANAGEMENT SVCS FOR PI'I'LANI MAI KE KAI SUBDIVISION,	Contingent upon Contract Administrator	N
HHL602	T	\$ 37,086	O	\$ 40,000	\$ 2,914.10	12/12/2012			AKINAKA & ASSOCIATES, LTD.	S	HONOKAI'A OHANA PROPOSED PASTORAL WATER SYSTEM-EXPERT WITNESS FOR	Contingent upon Contract Administrator	N
HHL602	T	\$ 659,016	O	\$ 970,000	\$ 310,984.38	12/17/2012			COMMUNITY PLANNING AND	S	ENGINEERING SVCS FOR KEOKEA-WAIOHULI SUBDIVISON LOCATE AT KULA, MAUI	Contingent upon Contract Administrator	N
HHL602	T	\$ -	O	\$ 96,782	\$ 96,782.00	12/17/2012			COMMUNITY PLANNING AND	S	ENGINEERING SVCS FOR KEOKEA-WAIOHULI SUBDIVISON LOCATE AT KULA, MAUI	Contingent upon Contract Administrator	N
HHL602	N	\$ 37,639	O	\$ 453,058	\$ 415,419.46	1/9/2013			COUNCIL FOR NATIVE HAWAIIAN	S	HOMESTEAD ENERGY PROGRAM(HEP-NAHASADA GRANT.	Contingent upon Contract Administrator	N
HHL602	N	\$ 51,629	O	\$ 138,140	\$ 86,511.03	1/10/2013			PAPAKOLEA COMMUNITY	S	KUKULA HALE-BUILDING A HOME; PAPAKOLEA HOME RETENTION PROGRAM-	Contingent upon Contract Administrator	N
HHL602	T	\$ 46,351	O	\$ 250,000	\$ 203,649.48	1/18/2013			SSFM INTERNATIONAL, INC.	S	PROFESSIONAL ENGINEERING SERVICES FOR DHHL STATEWIDE LAND AND	Contingent upon Contract Administrator	N
HHL602	B	\$ 3,000	O	\$ 4,000	\$ 1,000.00	1/31/2013			BLX GROUP LLC	S	BOND ARBITRAGE REBATE CALCULATIONS OPT OPT TO EXTEND 2-12 MOS.	Contingent upon Contract Administrator	N
HHL602	T	\$ 280,922	O	\$ 313,151	\$ 32,229.17	2/21/2013			HDR ENGINEERING, INC.	S	ASSESSMENT & DESIGN IMPROVEMENTS FOR THE MOLOKAI WATER SYSTEM OPT TO	Contingent upon Contract Administrator	N
HHL602	T	\$ 12,678	O	\$ 95,000	\$ 82,322.49	4/8/2013			UNIVERSITY OF HAWAII	S	AGRUCULTURAL EDUCATION PROGRAM-UH CTAHR COOP EXT SERVICE AND DHHL	Contingent upon Contract Administrator	N

Department of Hawaiian Home Lands
Active Contracts as of December 1, 2014

Table 20

Prog ID	MOF	Amount	(M/A/O)	Max Value	Outstanding Balance	Date Executed	From	To	Organization	E/L/P/C/ G/S	Description	Explanation of How Contract is Monitored	POS Y/N
HHL602	T	\$ 206,721	O	\$ 499,850	\$ 293,129.00	4/15/2013			ISEMOTO CONTRACTING CO., LTD.	S	IFB-13-HHL-001 CONSTRUCTION-KAWAIHAE 304.5' AND 632 RESERVOIR SYSTEM	Contingent upon Contract Administrator	N
HHL602	B	\$ -	O	\$ 20,955	\$ 20,955.00	5/8/2013			SANDWICH ISLES COMMUNICATIONS,	S	RFP-13-HHL-002, FURNISHING, DELIVERING, INSTALLING & MAINTAINING A	Contingent upon Contract Administrator	N
HHL602	A	\$ -	O	\$ 20,955	\$ 20,955.00	5/8/2013			SANDWICH ISLES COMMUNICATIONS,	S	RFP-13-HHL-002, FURNISHING, DELIVERING, INSTALLING & MAINTAINING A	Contingent upon Contract Administrator	N
HHL602	T	\$ 98,197	O	\$ 276,246	\$ 178,049.25	5/21/2013			COMMUNITY PLANNING AND	S	ENGINEERING PLANS & DESIGNS FOR SOUND/SAFETY WALL KANEHILI SUBDIVISION	Contingent upon Contract Administrator	N
HHL602	T	\$ 46,527	O	\$ 249,000	\$ 202,472.61	6/18/2013			ALCON & ASSOCIATES, INC.	S	SURVEYING & SUBDIVIDING OF LAND PARCELS LOCATED ON THE ISLANDS OF MAUI	Contingent upon Contract Administrator	N
HHL602	A	\$ 115,109	O	\$ 126,681	\$ 11,571.92	6/28/2013			VIATRON SYSTEMS, INC.	S	RFP 13-HHL-003 ENTERPRISE CONTENT MANAGEMENT SYSTEM	Contingent upon Contract Administrator	N
HHL602	T	\$ 194,974	O	\$ 250,000	\$ 55,025.59	6/28/2013			TOWILL, R. M. CORPORATION	S	KAWAIHAE WATER ASSESSMENT - HAWAII ISLAND	Contingent upon Contract Administrator	N
HHL602	T	\$ 7,000	O	\$ 30,000	\$ 23,000.00	6/28/2013			KESAJI, THEODDRE R.	S	APPRAISAL SVCS FOR RESIDENTIAL PROPERTIES LOCATED ON DHHL ISLANDS OF	Contingent upon Contract Administrator	N
HHL602	T	\$ 90,427	O	\$ 400,000	\$ 309,572.86	7/1/2013			AKINAKA & ASSOCIATES, LTD.	S	WATER ASSESSMENT-STATEWIDE	Contingent upon Contract Administrator	N
HHL602	T	\$ 135,438	O	\$ 209,850	\$ 74,412.50	7/1/2013			ENVIROSERVICES & TRAINING	S	ENVIRONMENTAL ENGINEERING SVCS, EAST KAPOLEI II PESTICIDE MIXING &	Contingent upon Contract Administrator	N
HHL602	T	\$ 5,952	O	\$ 70,000	\$ 64,047.95	7/1/2013			GROUP 70 INTERNATIONAL, INC.	S	LUALUALEI SUBDIVISION APPLICATION & FINAL ENVIRONMENTAL ASSESSMENT	Contingent upon Contract Administrator	N
HHL602	T	\$ 57,679	O	\$ 100,000	\$ 42,320.75	7/1/2013			GROUP 70 INTERNATIONAL, INC.	S	KAU WATER ASSESSMENT	Contingent upon Contract Administrator	N
HHL602	T	\$ 131,761	O	\$ 250,000	\$ 118,239.00	7/1/2013			AECOM TECHNICAL SERVICES, INC.	S	KEKAHA RESIDENTIAL LOTS, UNIT 4	Contingent upon Contract Administrator	N
HHL602	T	\$ 491,894	O	\$ 1,423,999	\$ 932,104.69	7/1/2013			GOODFELLOW BROS., INC.	S	IFB-13-HHL-007 LALAMILO HOUSING PHASE 1; KAWAIHAE RD IMPR.	Contingent upon Contract Administrator	N
HHL602	N	\$ 106,518	O	\$ 150,000	\$ 43,481.60	6/28/2013			WAI, HELEN N., LLC	S	LEASE CANCELLATION & FORECLOSURE PREVENTION	Contingent upon Contract Administrator	N
HHL602	N	\$ -	O	\$ 150,000	\$ 150,000.00	6/28/2013			WAI, HELEN N., LLC	S	LEASE CANCELLATION & FORECLOSURE PREVENTION	Contingent upon Contract Administrator	N
HHL602	T	\$ 62,291	O	\$ 100,000	\$ 37,708.93	8/1/2013			CANDON, TODD & SEABOLT, LLC	S	FORENSICS ACCOUNTING & AUDITING SERVICES FOR DHHL	Contingent upon Contract Administrator	N
HHL602	N	\$ -	O	\$ 500,000	\$ 500,000.00	8/1/2013			CANDON, TODD & SEABOLT, LLC	S	FORENSICS ACCOUNTING & AUDITING SERVICES FOR DHHL	Contingent upon Contract Administrator	N
HHL602	A	\$ 183,627	O	\$ 183,785	\$ 157.35	8/1/2013			XIAMALU CONSULTING &	S	UFB-13-HHL-015 SECURITY GUARD SERVICES FOR HHL OPT TO EXTEND2-12MOS.	Contingent upon Contract Administrator	N
HHL602	T	\$ 293,140	O	\$ 500,000	\$ 206,859.62	8/5/2013			SEGAWA, WESLEY R. AND	S	INFRASTRUCTURE AND LOT IMPROVEMENT HILO/WAIMANALO	Contingent upon Contract Administrator	N
HHL602	T	\$ 74,735	O	\$ 199,650	\$ 124,915.40	8/13/2013			STANDARD ELECTRIC, INC	S	ELECTRICAL & ST LIGHT MAINTENANCE FOR VARIOUS DHHL SUBDIVISIONS ON OAHU	Contingent upon Contract Administrator	N

Department of Hawaiian Home Lands
Active Contracts as of December 1, 2014

Table 20

Prog ID	MOF	Amount	(M/A/O)	Max Value	Outstanding Balance	Date Executed	From	To	Organization	E/L/P/C/ G/S	Description	Explanation of How Contract is Monitored	POS Y/N
HHL602	T	\$ 144,249	O	\$ 250,000	\$ 105,750.88	8/13/2013			WAILEA TREES AND LANDSCAPE	S	WAIEHU KOU SUBDIVISIONS LANDSCAPE MAINTENANCE FOR ALL PHASES OPT TO	Contingent upon Contract Administrator	N
HHL602	T	\$ -	O	\$ 289,000	\$ 289,000.00	8/28/2013			STARCOM BUILDERS, INC.	S	VILLAGE 8, KAUPEA IRRIGATION SYSTEM	Contingent upon Contract Administrator	N
HHL602	T	\$ 3,010	O	\$ 24,084	\$ 21,073.15	9/16/2013			YAMAGUCHI & YAMAGUCHI, INC.	S	APPRAISAL SVCS FOR RESIDENTIAL PROPERTIES ON DHHL LANDS, LOCATED ON THE	Contingent upon Contract Administrator	N
HHL602	B	\$ 600	O	\$ 12,500	\$ 11,900.00	9/18/2013			ISHIDA, WENDEL M.	S	APPRAISAL SERVICES FOR RESIDENTIAL PROPERTIES LOCATED WITH HHL ON THE	Contingent upon Contract Administrator	N
HHL602	T	\$ 274,094	O	\$ 370,110	\$ 96,015.69	9/30/2013			COMMUNITY PLANNING AND	S	DEDICATION OF EAST KAPOLEI ROADWAYS, HONOLULU, EWA, OAHU	Contingent upon Contract Administrator	N
HHL602	N	\$ 1,883,987	O	\$ 9,800,846	\$ 7,916,858.96	10/9/2013			ISEMOTO CONTRACTING CO., LTD.	S	LAIOPUA VILLAGE 4 SUBDIVISION, PHASE 1 - AKAU	Contingent upon Contract Administrator	N
HHL602	T	\$ 71	O	\$ 100,000	\$ 99,929.46	10/16/2013			UNIVERSITY OF HAWAII	S	AGRICULTURAL EDUCATION PROGRAM	Contingent upon Contract Administrator	N
HHL602	T	\$ 8,090	O	\$ 48,540	\$ 40,450.00	10/17/2013			H & L SERVICES	S	DHHL GROUNDS MAINTENANCE & CUSTODIAL SERVICES KEAUKAHA BEACH PARK	Contingent upon Contract Administrator	N
HHL602	B	\$ 18,105	O	\$ 75,000	\$ 56,895.36	10/18/2013			HOKE, RICHARD L, JR.	C	CONTESTED CASE HEARINGS OFFICER	Contingent upon Contract Administrator	N
HHL602	T	\$ 29,889	O	\$ 50,900	\$ 21,011.40	10/24/2013			RIDER LEVETT BUCKNALL, LTD.	S	CONSTRUCTION MANAGEMENT SERVICES FOR PUUKAPU DEVELOPMENT	Contingent upon Contract Administrator	N
HHL602	B	\$ 8,243	O	\$ 50,000	\$ 41,757.35	11/19/2013			NISHIMURA, ALVIN	C	CONTESTED CASE HEARINGS	Contingent upon Contract Administrator	N
HHL602	C	\$ 600,000	O	\$ 750,000	\$ 150,000.00	12/13/2013			WAIMANALO HAWAIIAN HOMES	S	COMMUNITY TECHNOLOGY, EDUCATION AND EMPLOYMENT CENTER (CTEEC) FOR	Contingent upon Contract Administrator	N
HHL602	A	\$ -	M	\$ 109,990	\$ 109,989.60	12/18/2013			ACNET	S	CONSULTANT FOR COMPUTER SCIENCES OPT TO EXTEND 2-12 MOS	Contingent upon Contract Administrator	N
HHL602	A	\$ 19,530	O	\$ 35,000	\$ 15,470.00	1/2/2014			OHANASOFT LLC	S	CONSULTANT: MAINTAIN & SUPPORT ORACLE BUSINESS APPLICATION	Contingent upon Contract Administrator	N
HHL602	A	\$ -	O	\$ 35,000	\$ 35,000.00	1/2/2014			OHANASOFT LLC	S	CONSULTANT: MAINTAIN & SUPPORT ORACLE BUSINESS APPLICATION	Contingent upon Contract Administrator	N
HHL602	B	\$ -	O	\$ 30,000	\$ 30,000.00	1/2/2014			OHANASOFT LLC	S	CONSULTANT: MAINTAIN & SUPPORT ORACLE BUSINESS APPLICATION	Contingent upon Contract Administrator	N
HHL602	T	\$ 504	O	\$ 82,800	\$ 82,295.74	1/2/2014			UNIVERSITY OF HAWAII	S	AGRICULTURAL EDUCATION PROGRAM. UH CTAHR COOPERATIVE EXTENSION SERVICES	Contingent upon Contract Administrator	N
HHL602	T	\$ 37,645	O	\$ 234,703	\$ 197,057.65	1/30/2014			PURAL WATER SPECIALTY CO.,	S	OPERATION & MAINTENANCE OF THE DHHL KAWAIIAE WATER SYSTEM	Contingent upon Contract Administrator	N
HHL602	A	\$ 7,836	O	\$ 10,000	\$ 2,164.50	2/6/2014			RICHARDS LAYTON & FINGER P.A.	S	ADVICE AND COUNSEL REGARDING, AND REPRESENTATION IN RE BIG ISLAND CARBON	Contingent upon Contract Administrator	N

Department of Hawaiian Home Lands
Active Contracts as of December 1, 2014

Table 20

Prog ID	MOF	Amount	[M/A/O]	Max Value	Outstanding Balance	Date Executed	From	To	Organization	E/L/P/C/G/S	Description	Explanation of How Contract is Monitored	POS Y/N
HHL602	T	\$ 247,793	O	\$ 667,000	\$ 419,207.32	2/6/2014			TOWILL, R. M. CORPORATION	S	PROFESSIONAL CONSTRUCTION MANAGEMENT SERVICES FOR LAIOPIUA VILLAGE 4	Contingent upon Contract Administrator	N
HHL602	A	\$ 26,549	O	\$ 75,000	\$ 48,451.00	2/24/2014			BINGHAM MCCUTCHEEN LLP	S	ADVICE & COUNSEL REGARDING US FISH & WILDLIFE SVCS PROPOSAL, TO DESIGNAT	Contingent upon Contract Administrator	N
HHL602	T	\$ 118,334	O	\$ 871,000	\$ 752,665.62	3/18/2014			BOWERS + KUBOTA CONSULTING INC	S	CONSTRUCTION MANAGEMENT SVCS FOR EAST KAPOLEI IIB DEVELOPMENT.	Contingent upon Contract Administrator	N
HHL602	T	\$ 68,473	O	\$ 260,245	\$ 191,772.50	3/20/2014			PSC CONSULTANTS, LLC	S	PROFESSIONAL GEOTECHNICAL ENGINEERING SERVICES FOR EAST KAPOLEI IIB	Contingent upon Contract Administrator	N
HHL602	N	\$ -	O	\$ 46,990	\$ 46,990.00	3/21/2014			HABITAT FOR HUMANITY MAUI	S	HOMEOWNERSHIP 101 EDUCATION/TRAINING PROGRAM	Contingent upon Contract Administrator	N
HHL602	N	\$ 49,104	O	\$ 312,457	\$ 263,353.14	4/1/2014			HAWAIIAN COMMUNITY ASSETS, INC	S	HOMESTEAD COMMUNITY LENDING PROGRAM	Contingent upon Contract Administrator	N
HHL602	N	\$ 5,177	O	\$ 38,203	\$ 33,025.84	4/4/2014			KULA NO NA PO'E HAWAII	S	WAHI MAILUHAI PAPAOLEA HOME REPAIR PROJECT	Contingent upon Contract Administrator	N
HHL602	A	\$ 11,089	O	\$ 22,203	\$ 11,114.69	4/15/2014			PACIFIC SECURITY INTEGRATIONS	S	IFB-14-HHL-012: PROVIDE, INSTALL, MAINTAIN SECURITY ALARM EQUIPMENT	Contingent upon Contract Administrator	N
HHL602	A	\$ 70,269	M	\$ 118,998	\$ 48,729.32	4/25/2014			JONIQUE & CO, LLC	S	IFB-14-HHL-013 CUSTODIAL SVCS FOR DHHL KAPOLEI OFFICE BUILDING	Contingent upon Contract Administrator	N
HHL602	C	\$ 920,000	O	\$ 1,150,000	\$ 230,000.00	5/20/2014			KAPOLEI COMMUNITY DEVELOPMENT	S	DESIGN & CONSTRUCTION OF KCDC HERITAGE CENTER PROJECT	Contingent upon Contract Administrator	N
HHL602	N	\$ 55,785	O	\$ 228,920	\$ 173,135.20	5/22/2014			ENVIRONET, INC.	S	LEAD PAINT SURVEY AND RISK ASSESSMENT-STATEWIDE	Contingent upon Contract Administrator	N
HHL602	N	\$ 492,264	O	\$ 8,358,841	\$ 7,866,576.83	5/23/2014			ROYAL CONTRACTING CO., LTD.	S	EAST KAPOLEI IIB SUBDIVISION - INFRASTRUCTURE CONSTRUCTION	Contingent upon Contract Administrator	N
HHL602	T	\$ 66,566	O	\$ 293,900	\$ 227,334.38	6/17/2014			AKINAKA & ASSOCIATES, LTD.	S	HONOKAIA WATER SYSTEM	Contingent upon Contract Administrator	N
HHL602	B	\$ 107,010	O	\$ 155,584	\$ 48,573.91	6/17/2014			HOIKE NETWORKS, INC.	S	FIRMOSJ & DELIVER NETWORK SVCS HARDWARE & SOFTWARE IN CONJUNCTION WITH	Contingent upon Contract Administrator	N
HHL602	T	\$ 5,148	O	\$ 93,200	\$ 88,052.32	6/18/2014			PACIFIC ELECTRO MECHANICAL	S	IFB 14-HHL-016: SPECIALIZED REPAIR WORK FOR DHHL MOLOKAI WATER SYSTEM	Contingent upon Contract Administrator	N
HHL602	T	\$ -	O	\$ 500,000	\$ 500,000.00	6/19/2014			SEGAWA, WESLEY R. AND	S	PROFESSIONAL ENGINEERING SERVICES FOR VARIOUS INFRASTRUCTURE & LOT	Contingent upon Contract Administrator	N
HHL602	T	\$ 49,879	O	\$ 96,225	\$ 46,345.75	6/19/2014			FEWELL GEOTECHNICAL	S	GEOTECHNICAL ENGINEERING SVCS FOR KAKAINA SUBDIVISION PS-14-LDD-012	Contingent upon Contract Administrator	N
HHL602	T	\$ -	O	\$ 500,000	\$ 500,000.00	6/19/2014			GROUP 70 INTERNATIONAL, INC.	S	ENGINEERING SVCS FOR VARIOUS INFRASTRUCTURE & LOT MPR. FOR HHL HOMESTEAD	Contingent upon Contract Administrator	N
HHL602	T	\$ 83,967	O	\$ 256,160	\$ 172,193.04	6/20/2014			COMMUNITY PLANNING AND	S	ENGINEERING SVCS FOR EAST KAPOLEI II-B	Contingent upon Contract Administrator	N

Department of Hawaiian Home Lands
Active Contracts as of December 1, 2014

Table 20

Prog ID	MOF	Amount	(M/A/O)	Max Value	Outstanding Balance	Date Executed	From	To	Organization	E/L/P/C/ G/S	Description	Explanation of How Contract is Monitored	POS Y/N
HHL602	T	\$ 67,861	O	\$ 200,000	\$ 132,139.33	6/20/2014			GROUP 70 INTERNATIONAL, INC.	S	PLANNING & PRELIMINARY ENGINEERING SVCS IN PREPARATION OF A CONCEPTUAL CIVIL ENGINEERING SVCS DURING INFRASTRUCTURE CONSTRUCTION KAKAINA	Contingent upon Contract Administrator	N
HHL602	T	\$ 30,724	O	\$ 97,720	\$ 66,995.75	6/24/2014			AKINAKA & ASSOCIATES, LTD.	S	PROFESSIONAL ENGINEERING SVCS FOR PIILANI MAI KE KAI SUBDIVISION PHASE 2	Contingent upon Contract Administrator	N
HHL602	T	\$ 43,685	O	\$ 50,345	\$ 6,659.72	6/24/2014			ESAKI SURVEYING AND MAPPING,	S	IFB-14-HHL-015; PROVIDE CINDER FOR DHHL WEST HAWAII DISTRICT OFFICE	Contingent upon Contract Administrator	N
HHL602	T	\$ 14,349	O	\$ 41,241	\$ 26,892.15	6/24/2014			WHC, LTD.	S	IFB-14-HHL-006 LOWER KULA WATER SYSTEM IMPROVEMENTS	Contingent upon Contract Administrator	N
HHL602	T	\$ 580,855	O	\$ 641,508	\$ 60,653.30	6/25/2014			ROJAC CONSTRUCTION, INC.	S	IFB-14-HHL-011:PUUKAPU PASTORAL LOTS WATER SYSTEM OPERATION & MAINTENANC	Contingent upon Contract Administrator	N
HHL602	T	\$ 50,511	O	\$ 588,440	\$ 537,929.45	6/27/2014			ITC WATER MANAGEMENT, INC.	S	STATE OF HAWAII-MUNICIPAL ADVISOR CONTRACT WITH PUBLIC FINANCIAL	Contingent upon Contract Administrator	N
HHL602	A	\$ -	O	\$ 3,800	\$ 3,800.00	7/17/2014			PUBLIC FINANCIAL MANAGEMENT,	S	SECURITY GUARD SERVICES FOR DHHL KAPOLEI OFFICE	Contingent upon Contract Administrator	N
HHL602	A	\$ -	M	\$ 192,545	\$ 192,544.80	8/12/2014			UNIVERSAL PROTECTION SERVICE	S	ENGINEERING & DESIGN SERVICES FOR KAPAAKEA FLOOD MITIGATION IMPROVEMENTS	Contingent upon Contract Administrator	N
HHL602	T	\$ -	O	\$ 132,882	\$ 132,882.00	8/20/2014			MITSUMAGA & ASSOCIATES, INC.	S	CONSTRUCTION MANAGEMENT SERVICES FOR VARIOUS MAUI PROJECTS	Contingent upon Contract Administrator	N
HHL602	T	\$ 51,698	O	\$ 260,500	\$ 208,801.92	8/21/2014			SSFM INTERNATIONAL, INC.	S	PREPARATION OF ADMINISTRATIVE RULES FOR DHHL PLANNING SYSTEM	Contingent upon Contract Administrator	N
HHL602	T	\$ 53,859	O	\$ 200,000	\$ 146,141.38	9/11/2014			PBR HAWAII & ASSOCIATES, INC.	S	RENEWABLE ENERGY CONSULTANT ON LAND USAGE	Contingent upon Contract Administrator	N
HHL602	B	\$ 64,678	O	\$ 292,000	\$ 227,321.75	9/17/2014			SPS ENERGY & FINANCIAL LLC	S	MOLOKAI WATER SYSTEM REPAIRS-PHASE 1 IFB-14-HHL-010.	Contingent upon Contract Administrator	N
HHL602	T	\$ -	O	\$ 1,173,500	\$ 1,173,500.00	9/24/2014			GOODFELLOW BROS., INC.	S	NEIGHBORHOOD REVITALIZATION INITIATIVE FOR HOME REPAIR & HOME OWNERSHIP	Contingent upon Contract Administrator	N
HHL602	N	\$ -	O	\$ 158,777	\$ 158,777.00	9/25/2014			HABITAT FOR HUMANITY WEST	S	PREPARATION OF HOUSING & URBAN DEVELOPMENT FOR NHHBG ENVIRONMENTAL	Contingent upon Contract Administrator	N
HHL602	N	\$ -	O	\$ 1,500,000	\$ 1,500,000.00	10/1/2014			PBR HAWAII & ASSOCIATES, INC.	S	LEGAL COUNSEL ON DHHL WATER ISSUES	Contingent upon Contract Administrator	N
HHL602	T	\$ -	O	\$ 100,000	\$ 100,000.00	10/13/2014			SULLIVAN MEHEULA LEE LLLP	C	EAST KAPOLEI IIB INFRASTRUCTURE: INTERIM FINANCING AGREEMENT	Contingent upon Contract Administrator	N
HHL602	T	\$ -	O	\$ 3,701,000	\$ 3,701,000.00	10/27/2014			NA KUPAA O KUHIO	S	OHIAPILO PLAN	Contingent upon Contract Administrator	N
HHL602	B	\$ -	O	\$ 286,771	\$ 286,771.00	10/28/2014			SUSTAINABLE RESOURCES GROUP	S	ADVICE & COUNSEL REGARDING POTENTIAL ENVIRONMENTAL HAZARDS LOCATED ON	Contingent upon Contract Administrator	N
HHL602	T	\$ 21,318	O	\$ 50,000	\$ 28,682.13	10/28/2014			CARLSMITH BALL LLP	C		Contingent upon Contract Administrator	N

Department of Hawaiian Home Lands
Active Contracts as of December 1, 2014

Table 20

Prog ID	MOF	Amount	(M/A/O)	Max Value	Outstanding Balance	Date Executed	From	To	Organization	E/L/P/C/ G/S	Description	Explanation of How Contract is Monitored	POS Y/N
HHL602	N	\$ -	O	\$ 46,905	\$ 46,905.00	10/28/2014			KAILAPA COMMUNITY ASSOCIATION	S	NOHOMALU DEVELOP, PRINT, AND DISTRIBUTE A COMMUNITY EMERGENCY GUIDE	Contingent upon Contract Administrator	N
HHL602	N	\$ -	O	\$ 360,980	\$ 360,980.00	10/29/2014			NANAKULI HOUSING CORPORATION	S	REHAB, RENOVATE, REENERGIZE: RHEAB FUNDS FOR FAMILIES LIVING ON HAWAIIAN	Contingent upon Contract Administrator	N
HHL602	T	\$ -	O	\$ 55,000	\$ 55,000.00	10/29/2014			TOM'S BACKHOE & EXCAVATION	S	LOT 96 DRAINAGE IMPROVEMENTS, WAIHOLI, KULA, MAUI	Contingent upon Contract Administrator	N
HHL602	T	\$ -	O	\$ 219,792	\$ 219,791.53	11/12/2014			GROUP 70 INTERNATIONAL, INC.	S	KANAKALOLOA CEMETARY IMPROVEMENTS, MOLOKAI	Contingent upon Contract Administrator	N
HHL602	T	\$ -	O	\$ 208	\$ 208.47	11/12/2014			GROUP 70 INTERNATIONAL, INC.	S	KANAKALOLOA CEMETARY IMPROVEMENTS, MOLOKAI	Contingent upon Contract Administrator	N
HHL602	N	\$ -	O	\$ 622,263	\$ 622,263.00	11/12/2014			HAWAII HOMEOWNERSHIP CENTER	S	HOMEOWNERSHIP ASSISTANCE & FINANCIAL LITERACY EDUCATION PROGRAM	Contingent upon Contract Administrator	N
HHL602	T	\$ 1,900	M	\$ 22,800	\$ 20,900.00	11/12/2014			KALEHUWEHE, HEIDI	S	CUSTODIAL SERVICES FOR DHHL PAUKUKALO COMMUNITY CENTER,	Contingent upon Contract Administrator	N
HHL602	N	\$ -	O	\$ 33,600	\$ 33,599.70	11/14/2014			NEW KAIKO'O BUILDING, INC.	L	OFFICE SPACE LEASE AGREEMENT NO 72-19-0606; DHHL NATIVE AMERICAN HOUSING	Contingent upon Contract Administrator	N
HHL602	T	\$ -	O	\$ 103,680	\$ 103,680.00	11/25/2014			JN CONSTRUCTION INC	S	OPERATION & MAINTENANCE OF LEIALII IRRIGATION WATER SYSTEM	Contingent upon Contract Administrator	N
HHL602	A	\$ -	O	\$ 148,573	\$ 148,573.24	11/26/2014			VIATRON SYSTEMS, INC.	S	DOCUMENT IMAGING PROJECT	Contingent upon Contract Administrator	N
HHL602	B	\$ -	O	\$ 380,268	\$ 380,268.12	12/11/2014			LEE, R. H. S., INC.	S	EXCAVATION, SCREENING, SEGREGATION & REMOVAL OF FILL MATERIAL ON	Contingent upon Contract Administrator	N

Department of Hawaiian Home Lands
 FY15 Appropriation Status

Table 21

Act/ Year	ProgID	Seq No.	Description	Comments	FY15 Appropriation			Amount used as of November 30			Comments	
					MOF	Temp Pos.	Perm. Pos.	Amount	Temp Pos.	Perm. Pos.		Amount
Act134/13	HHL 602	2090001	LEGISLATIVE ADJUSTMENT: ADD FUNDS FOR ADMINISTRATIVE AND OPERATING EXPENSES.		A	-	-	9,632,000.00	-	-		

Department of Hawaiian Home Lands
Capital Improvements Program (CIP) Requests

Table 22

<u>Prog ID</u>	<u>Prog ID</u> <u>Priority</u>	<u>Dept- Wide</u> <u>Priority</u>	<u>Senate</u> <u>District</u>	<u>Rep.</u> <u>District</u>	<u>Project Title</u>	<u>MOF</u>	<u>FY16 \$\$\$</u>	<u>FY17 \$\$\$</u>
HHL 602	1	1	8	14	Hawaiian Home Lands Dams and Reservoirs	C	\$ 3,000,000	
HHL 602	2	2	11	25	Papakolea Sewer System Upgrades, Papakolea, Oahu	C	\$ 1,750,000	\$ 2,000,000
HHL 602	3	3	7	13	Molokai Drainage Improvements, Molokai	C		\$ 3,000,000
HHL 602	4	4	4	14	Anahola Water System Improvements, Kauai	C		\$ 3,000,000
HHL 602	5	5	5	7	Kau water System Improvements, Hawaii	C		\$ 1,000,000
HHL 602	6	6	I/W	I/W	Traffic Calming Measures (Priority Nanakuli), Oahu	C	\$ 250,000	
HHL 602	7	7	6	10	Leialii Parkway and Highway Improvements, Maui	C		\$ 1,000,000
HHL 602	8	8	S/W	S/W	NAHASDA Development Projects, Statewide	C	\$ 20,000,000	\$ 20,000,000

Department of Hawaiian Home Lands
CIP Lapses

Table 23

<u>Prog ID</u>	<u>Act/Year of Appropriation</u>	<u>Project Title</u>	<u>MOF</u>	<u>Amount \$\$\$\$</u>	<u>Reason</u>
		None.			

Department of Hawaiian Home Lands
 Division Resources

Table 24

<u>Division</u>	<u>Associated Program IDs</u>	
Office of the Chairman	HHL 602 - Planning and Development for Hawaiian Home Lands	
Planning Office	HHL 602 - Planning and Development for Hawaiian Home Lands	
Administrative Services Office	HHL 602 - Planning and Development for Hawaiian Home Lands	
Fiscal Office	HHL 602 - Planning and Development for Hawaiian Home Lands	
Information and Community Relations Office	HHL 602 - Planning and Development for Hawaiian Home Lands	
Homestead Services Division	HHL 602 - Planning and Development for Hawaiian Home Lands	
Land Management Division	HHL 602 - Planning and Development for Hawaiian Home Lands	
Land Development Division	HHL 602 - Planning and Development for Hawaiian Home Lands	

Department of Hawaiian Home Lands
Program ID Sub-Organizations

Table 25

<u>Program ID</u>	<u>Sub-Org Code</u>	<u>Name</u>	<u>Objective</u>
HHL 602	4328	HHL	
HHL 602	4329	Office of the Chairman	
HHL 602	4330	Planning Office	
HHL 602	4331	Administrative Services Office	
HHL 602	4332	Personnel Staff	
HHL 602	4333	Budget & Program Evaluation Staff	
HHL 602	4334	Information & Communication Systems Staff	
HHL 602	4335	Contract Services Staff	
HHL 602	4336	Clerical Services Staff (ASO)	
HHL 602	4337	Fiscal Office	
HHL 602	4338	Accounting Staff	
HHL 602	4339	Fiscal Services Staff	
HHL 602	4340	System & Internal Control Staff	
HHL 602	4341	Homestead Services Division	
HHL 602	4342	Homestead Applications Branch	
HHL 602	4343	Clerical Services (Appl)	
HHL 602	4344	District Operations Branch	
HHL 602	4345	East Hawaii District Office	
HHL 602	4346	Maui District Office	
HHL 602	4347	Molokai District Office	
HHL 602	4348	Oahu District Office	
HHL 602	4349	Kauai District Office	
HHL 602	4350	West Hawaii District Office	
HHL 602	4351	Loan Services Branch	
HHL 602	4352	Land Development Division	
HHL 602	4353	Housing Project Branch	
HHL 602	4354	Master-Plan Community Branch	
HHL 602	4355	Design and Construction Branch	
HHL 602	4360	Clerical Services (LDD)	
HHL 602	4361	Information and Community Relations Office	
HHL 602	4362	Land Management Division	
HHL 602	4363	Income Property Branch	
HHL 602	4364	Technical Services Branch	

Department of Hawaiian Home Lands
 Program ID Sub-Organizations

Table 25

<u>Program ID</u>	<u>Sub-Org Code</u>	<u>Name</u>	<u>Objective</u>
HHL 602	4365	Land Management Branch	
HHL 602	4366	Hawaii Section	
HHL 602	4367	Oahu-Kauai-Maui Section	
HHL 602	4368	Enforcement Section	
HHL 602	4369	Clerical Services	

Department of Hawaiian Home Lands
Organization Changes

Table 26

<u>Year of Change</u> FY15/FY16	<u>Page</u> <u>Number</u>	<u>Description of Change</u>
		No Changes.

Department of Hawaiian Home Lands
Personnel Separations from July 1, 2013 to November 30, 2014

Table 14

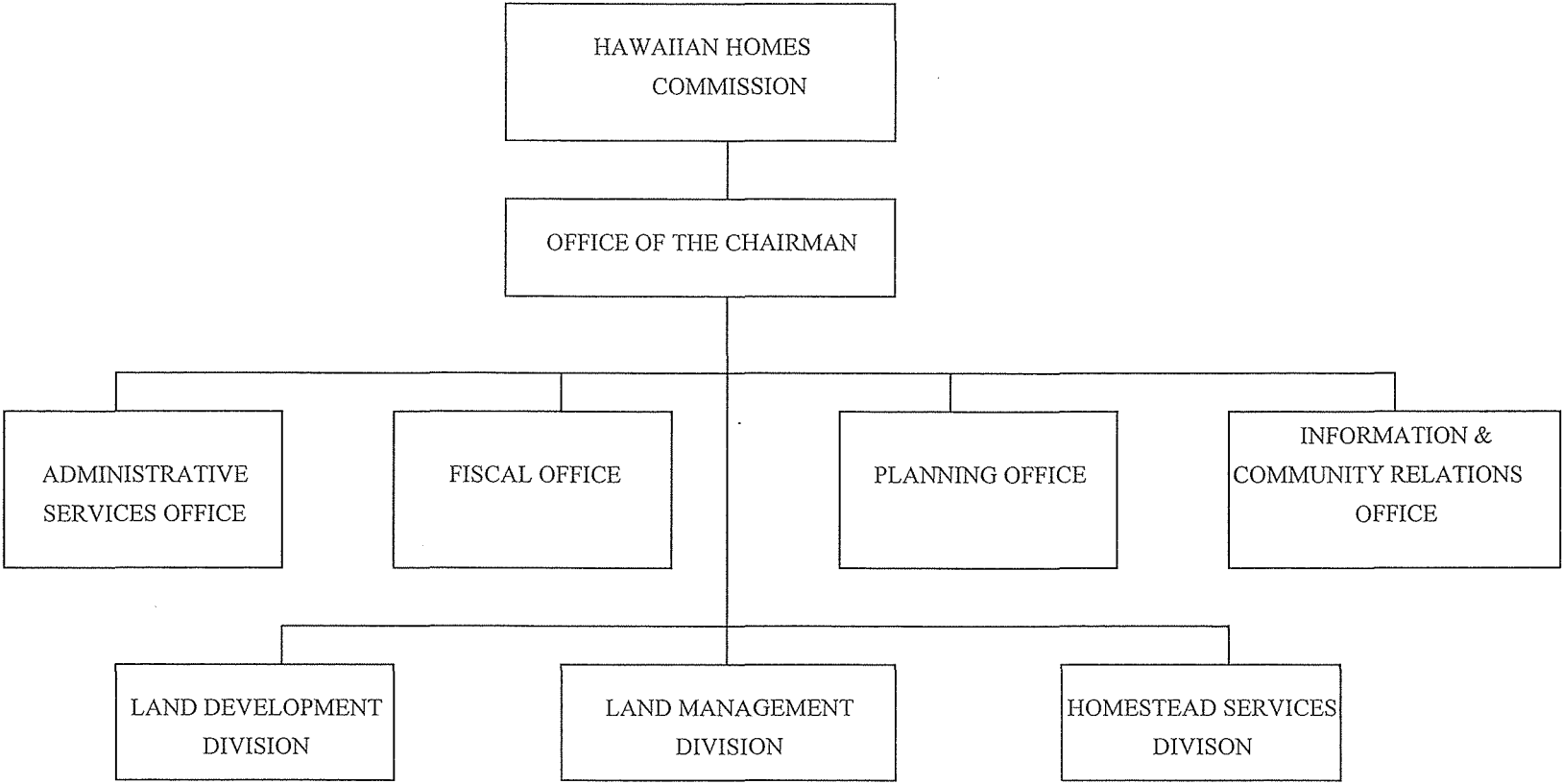
<u>Prog ID</u>	<u>Sub-Org</u>	<u>Separation Date</u>	<u>Position Number</u>	<u>Position Title</u>	<u>Exempt (Y/N)</u>	<u>SR Level</u>	<u>BU Code</u>	<u>T/P</u>	<u>MOF</u>	<u>Budgeted FTE</u>	<u>Budgeted Salary</u>	<u>Actual FTE</u>	<u>Actual Salary</u>
HHL602BB	04348	10/10/2013	101259	HHL Legal Assistant III	Y	20	13	P	B	1.00	\$ 53,352	1.00	\$ 53,352
HHL602BB	04339	12/31/2013	23718	Account Clerk III	N	11	03	P	B	1.00	\$ 35,064	1.00	\$ 36,516
HHL602BB	04355	12/31/2013	102454	Hmstd Land Dev Spclt	Y	22	13	P	T	1.00	\$ 64,920	1.00	\$ 67,512
HHL602BB	04348	1/1/2014	110453	Homestead Assistant II	N	15	03	P	B	1.00	\$ 39,480	1.00	\$ 41,040
HHL602BB	04330	5/31/2014	38083	Planning Program Manager	N	EM05	35	P	B	1.00	\$ 99,780	1.00	\$ 106,200
HHL602BB	04342	9/2/2014	38171	Clerk IV	N	10	03	P	B	1.00	\$ 27,756	1.00	\$ 35,112
HHL602BB	04342	9/15/2014	106190	HHL Clerk IV	Y	10	03	P	T	1.00	\$ 41,040	1.00	\$ 41,040
HHL602BB	04329	11/1/2014	117345	HHL Secretary III	Y	16	03	T	T	1.00	\$ 41,040	1.00	\$ 38,988
HHL602BB	04352	12/1/2014	108403	HHL Land Develop Admstr	Y	30	93	P	T	1.00	\$ 95,676	1.00	\$ 102,960
HHL602BB	04342	12/15/2014	110645	HHL Applications Asst	Y	13	03	P	T	1.00	\$ 32,424	1.00	\$ 44,388
HHL602BB	04343	12/19/2014	100205	HHL Clerk Typist II	Y	10	03	P	B	1.00	\$ 27,756	1.00	\$ 27,768
HHL602BB	04365	12/30/2014	38097	Land Agent V	N	24	13	P	B	1.00	\$ 64,920	1.00	\$ 73,032
HHL602BB	04338	12/30/2014	116377	HHL Accountant III	Y	20	13	P	T	1.00	\$ 53,352	1.00	\$ 55,488

Department of Hawaiian Home Lands
Positions Filled from July 1, 2013 to November 30, 2014

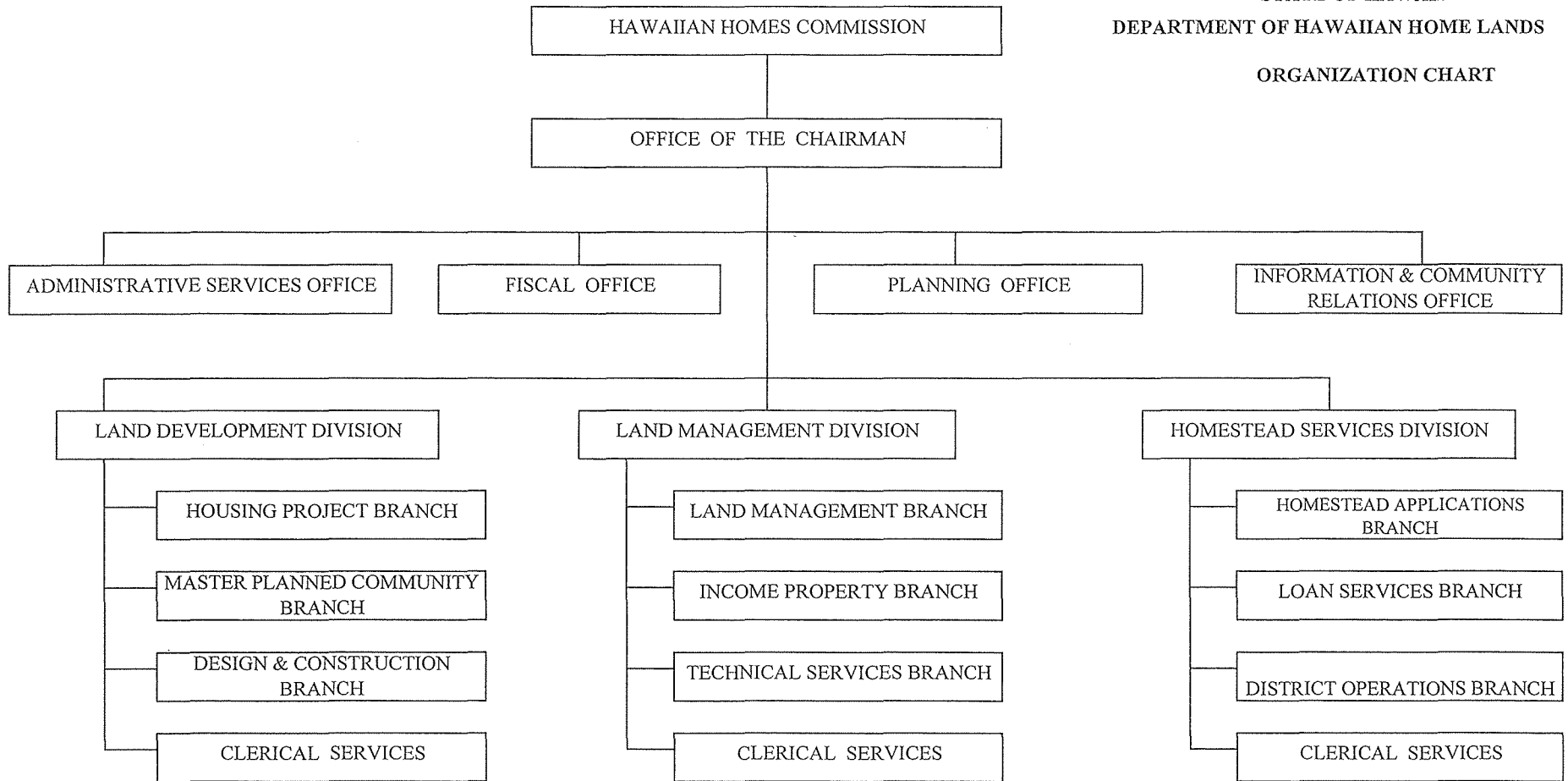
Table 15

Prog ID	Sub-Org	Effective Date Position Filled	Position Number	Position Title	Exempt (Y/N)	SR Level	BU Code	T/P	MOF	Budgeted FTE	Budgeted Salary	Actual FTE	Actual Salary	Occupied by 89 Day Hire (Y/N)
HHL602BB	04334	7/16/2013	102488	Information & Community Relations Officer	Y	28	73	P	T	1.00	\$ 81,339	1.00	\$ 78,984	N
HHL602BB	04363	8/1/2013	106416	Property Develop Manager	Y	28	13	P	T	1.00	\$ 75,960	1.00	\$ 75,960	N
HHL602BB	04339	8/1/2013	106409	Accountant IV	N	22	13	P	B	1.00	\$ 55,500	1.00	\$ 53,364	N
HHL602BB	04342	9/3/2013	102957	Applications Officer	Y	20	13	P	T	1.00	\$ 42,132	1.00	\$ 53,352	N
HHL602BB	04348	10/16/2013	38166	Homestead Asst II	N	15	03	P	B	1.00	\$ 46,176	1.00	\$ 39,492	N
HHL602BB	04353	11/18/2013	106169	Homestead Housing Specialist II	Y	18	13	P	B	1.00	\$ 45,576	1.00	\$ 43,812	N
HHL602BB	04342	12/2/2013	102952	HHL Genealogist	Y	20	13	P	T	1.00	\$ 43,740	1.00	\$ 45,576	N
HHL602BB	04353	12/16/2013	102450	Homestead Housing Specialist IV	Y	22	13	P	T	1.00	\$ 60,024	1.00	\$ 51,300	N
HHL602BB	04341	1/2/2014	101610	HHL Homestead Development Asst	Y	18	03	P	B	1.00	\$ 39,480	1.00	\$ 41,064	N
HHL602BB	04337	2/18/2014	112587	HHL Clerk Typist II	Y	08	03	P	T	1.00	\$ 27,732	1.00	\$ 26,700	N
HHL602BB	04343	2/18/2014	100206	HHL Clerk Typist II	Y	08	03	P	B	1.00	\$ 25,668	1.00	\$ 26,700	N
HHL602BB	04339	3/3/2014	100533	HHL Account Clk III	Y	11	03	P	B	1.00		1.00		N
HHL602BB	04360	3/3/2014	26468	Secretary III	N	16	03	P	B	1.00		1.00		N
HHL602BB	04339	3/3/2014	38089	Accountant III	N	18	13	P	B	1.00		1.00		N
HHL602BB	04329	3/17/2014	120558	NAHASDA Clerk Typist III	Y	10	03	T	T	1.00		1.00		N
HHL602BB	04355	4/1/2014	102941	HHL Engineer III	Y	22	13	P	T	1.00		1.00		N
HHL602BB	04355	6/16/2014	112745	Student Helper II	Y	0	0	T	T	1.00	8.00/hr	1.00	8.00/hr	N
HHL602BB	04328	7/1/2014	102954	HHL Grants Spclt	Y	24	13	P	T	1.00	\$ 60,024	1.00	\$ 70,188	N
HHL602BB	04328	7/1/2014	106414	Property Dev Agent	Y	26	13	P	T	1.00	\$ 67,476	1.00	\$ 57,720	N
HHL602BB	04347	7/16/2014	104353	HHL Clerk Typist III	Y	10	3	P	T	1.00	\$ 32,424	1.00	\$ 32,460	N
HHL602BB	04355	8/1/2014	101073	HHL Engineer V	Y	26	13	P	T	1.00	\$ 83,412	1.00	\$ 41.07	Y
HHL602BB	04328	8/18/2014	102946	HHL Mgmt Analyst IV	Y	22	13	P	T	1.00	\$ 64,896	1.00	\$ 60,012	N
HHL602BB	04345	8/18/2014	38159	Hmstd Asst I	N	13	3	P	B	1.00	\$ 48,048	1.00	\$ 32,460	N
HHL602BB	04355	9/2/2014	102453	Hmstd Land Dev Spclt IV	Y	22	13	P	T	1.00	\$ 67,488	1.00	\$ 75,960	N
HHL602BB	04328	9/2/2014	111524	HHL Hmstd Lease Coord	Y	18	3	P	T	1.00	\$ 51,312	1.00	\$ 41,064	N
HHL602BB	04348	9/2/2014	110453	Hmstd Asst II	N	15	3	P	B	1.00	\$ 39,480	1.00	\$ 35,112	N
HHL602BB	04342	9/16/2014	110645	HHL Applications Asst	Y	13	3	P	T	1.00	\$ 32,424	1.00	\$ 44,388	N
HHL602BB	04348	10/1/2014	101259	HHL Legal Asst III	Y	20	13	P	B	1.00	\$ 53,352	1.00	\$ 51,300	N

STATE OF HAWAII
DEPARTMENT OF HAWAIIAN HOME LANDS
ORGANIZATION CHART



STATE OF HAWAII
DEPARTMENT OF HAWAIIAN HOME LANDS
ORGANIZATION CHART

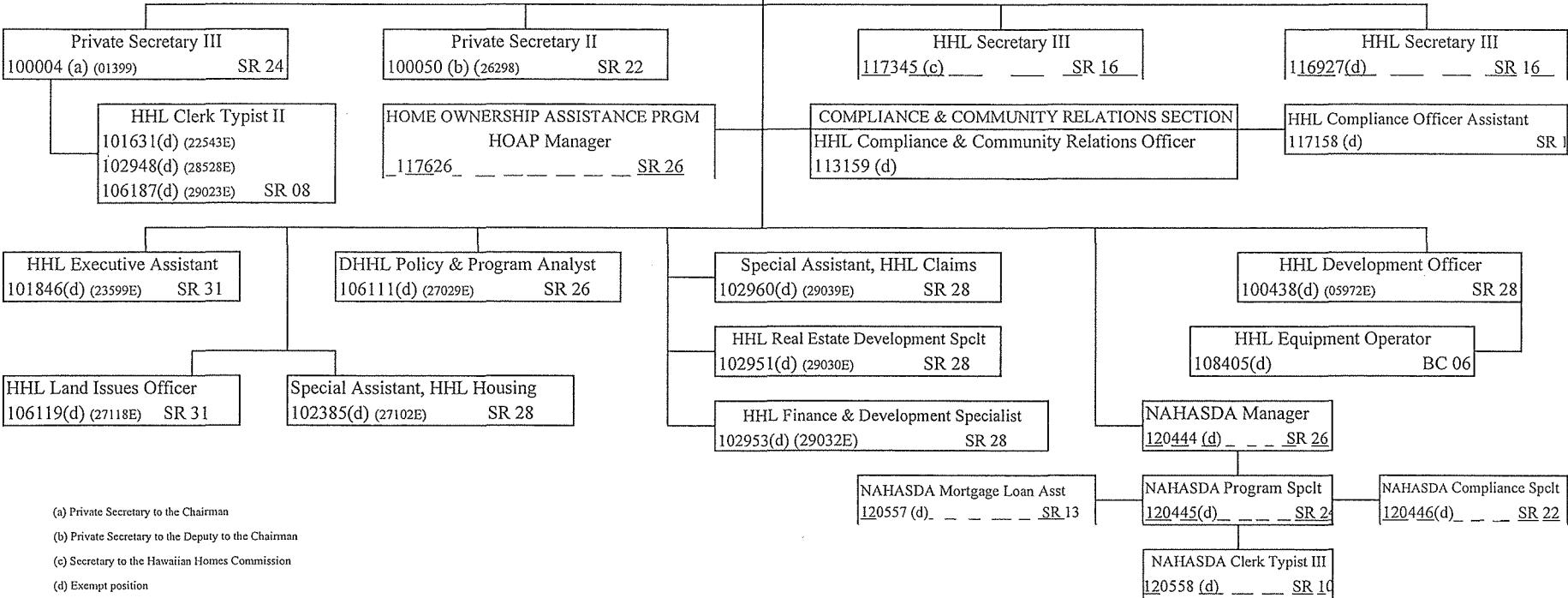


HAWAIIAN HOMES COMMISSION

STATE OF HAWAII
DEPARTMENT OF HAWAIIAN HOME LANDS

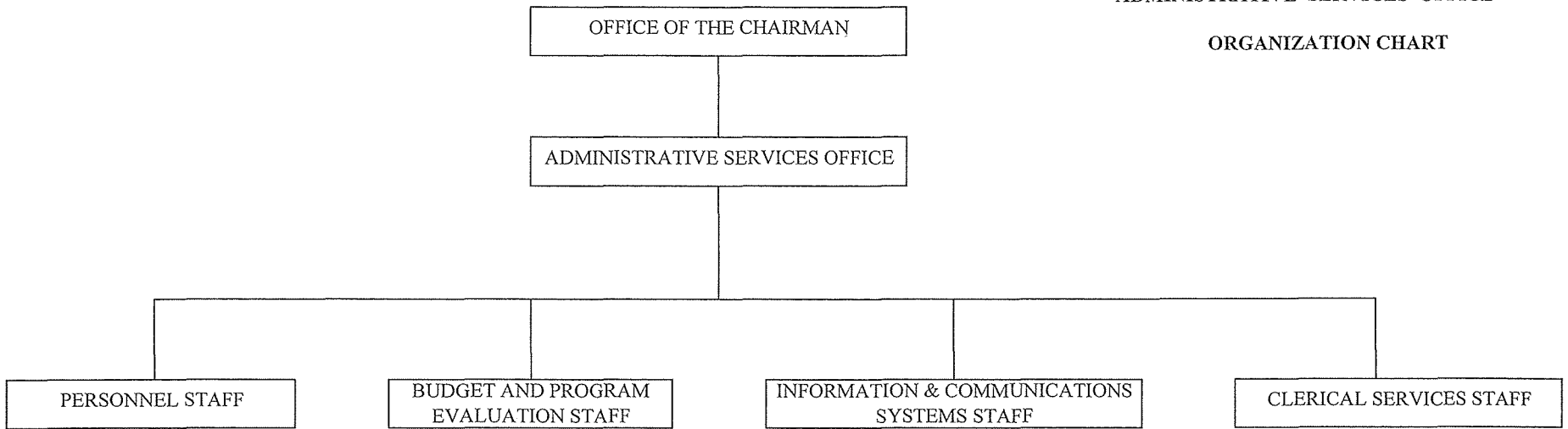
OFFICE OF THE CHAIRMAN
Chairman, HHC
100360 (04561E) (-)
Deputy to the Chairman
100193 (00492E) (-)

OFFICE OF THE CHAIRMAN
POSITION ORGANIZATION CHART



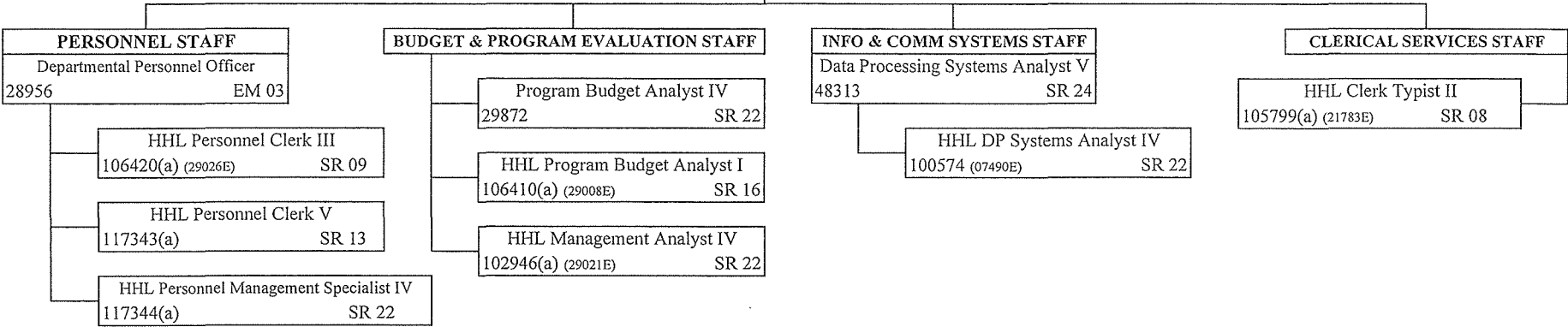
(a) Private Secretary to the Chairman
(b) Private Secretary to the Deputy to the Chairman
(c) Secretary to the Hawaiian Homes Commission
(d) Exempt position

STATE OF HAWAII
DEPARTMENT OF HAWAIIAN HOME LANDS
ADMINISTRATIVE SERVICES OFFICE
ORGANIZATION CHART



STATE OF HAWAII
 DEPARTMENT OF HAWAIIAN HOME LANDS
 ADMINISTRATIVE SERVICES OFFICE
 POSITION ORGANIZATION CHART

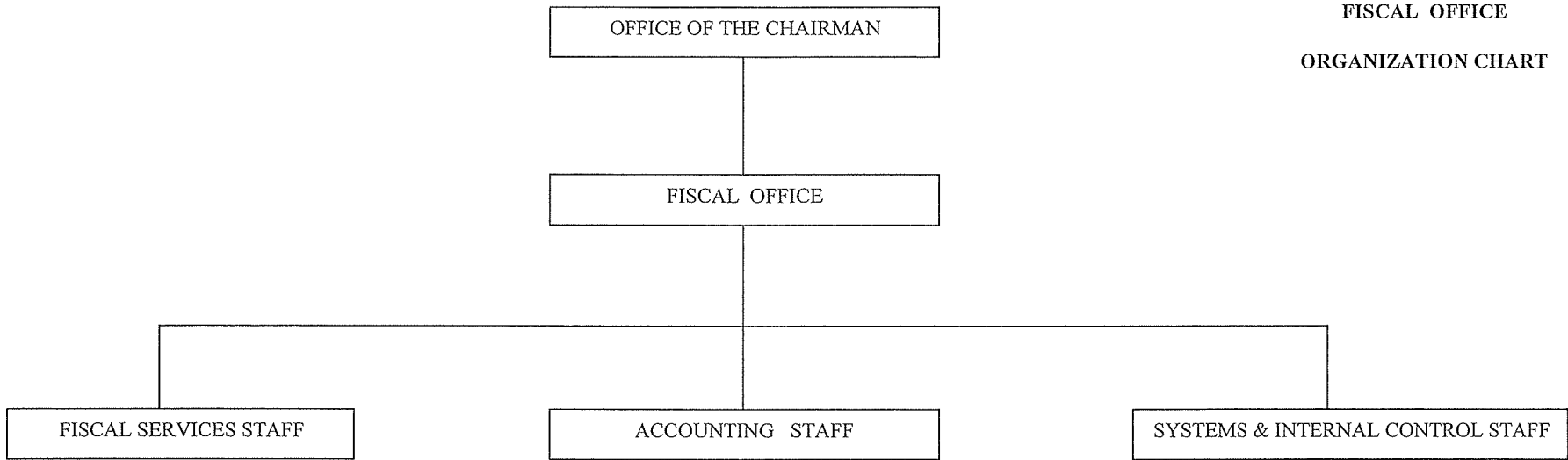
Chairman, HHC
 100360 (--)
 ADMINISTRATIVE SERVICES OFFICE
 Administrative Services Officer I
 38164 EM 05



(a) Exempt position

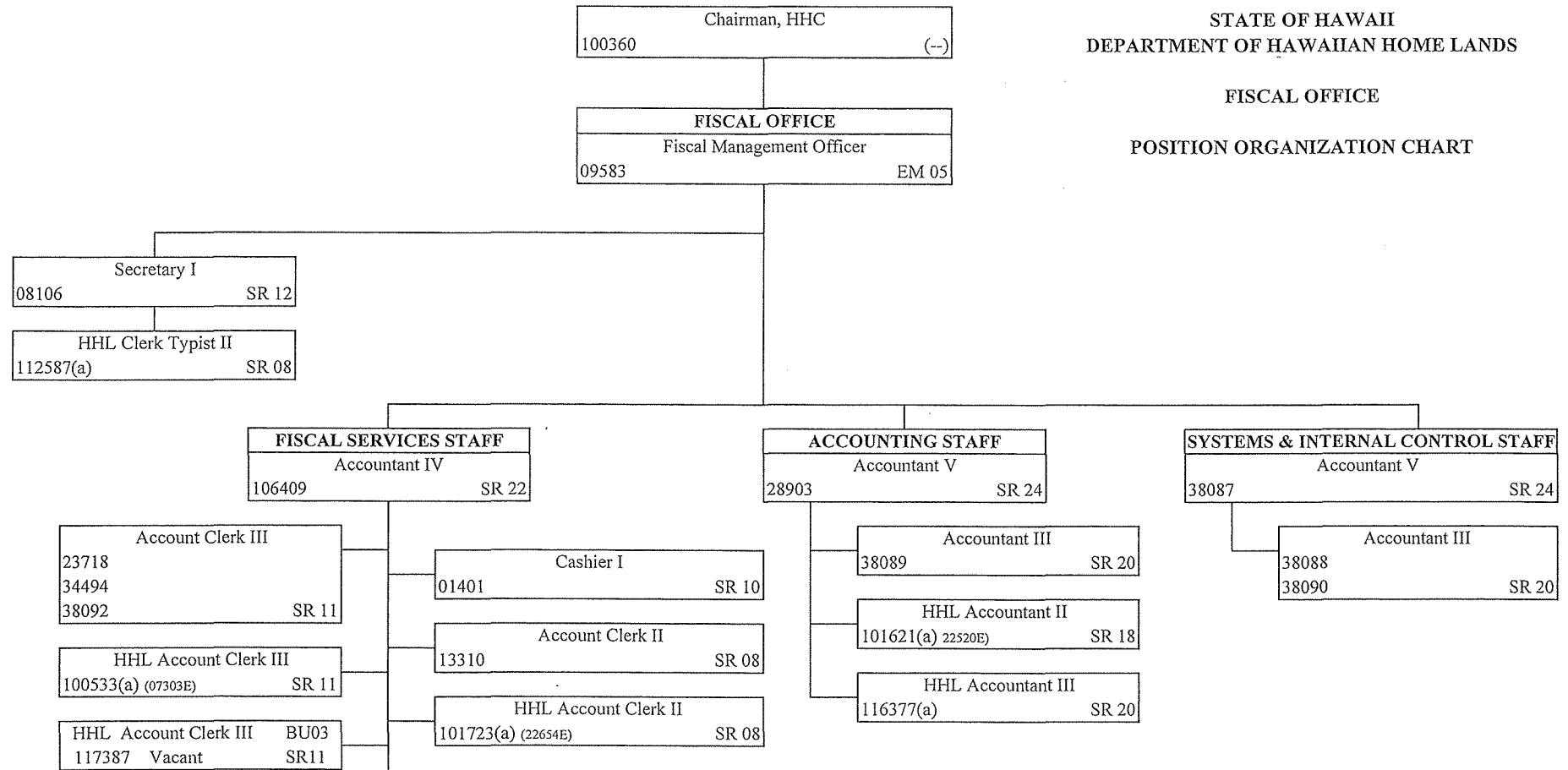
STATE OF HAWAII
DEPARTMENT OF HAWAIIAN HOME LANDS

FISCAL OFFICE
ORGANIZATION CHART



STATE OF HAWAII
DEPARTMENT OF HAWAIIAN HOME LANDS

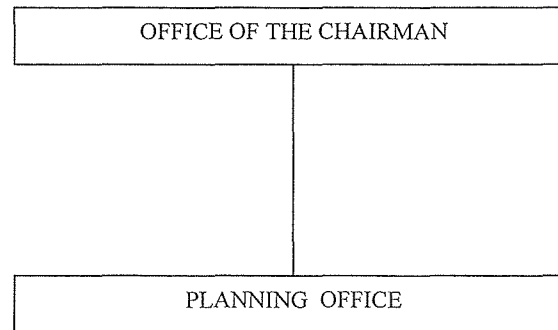
FISCAL OFFICE
POSITION ORGANIZATION CHART



(a) Exempt position

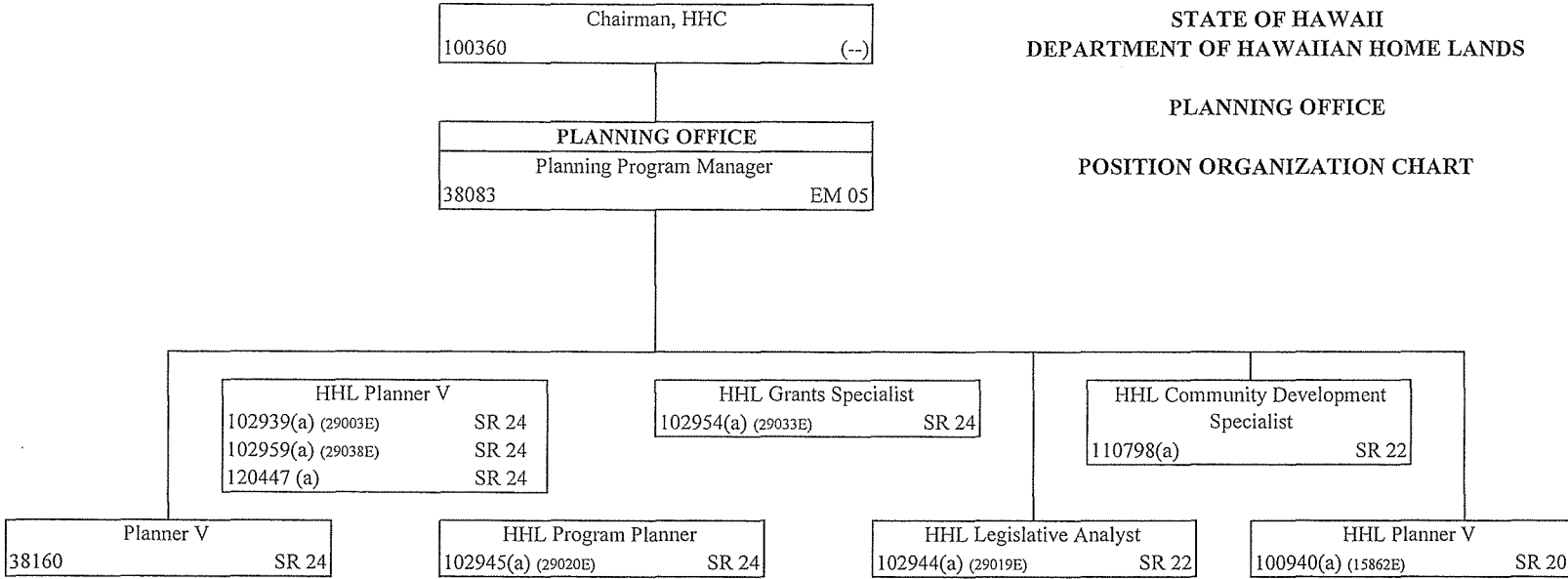
STATE OF HAWAII
DEPARTMENT OF HAWAIIAN HOME LANDS

PLANNING OFFICE
ORGANIZATION CHART



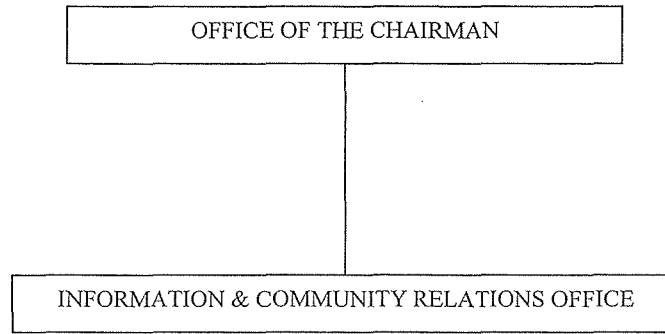
STATE OF HAWAII
DEPARTMENT OF HAWAIIAN HOME LANDS

PLANNING OFFICE
POSITION ORGANIZATION CHART



(a) Exempt position

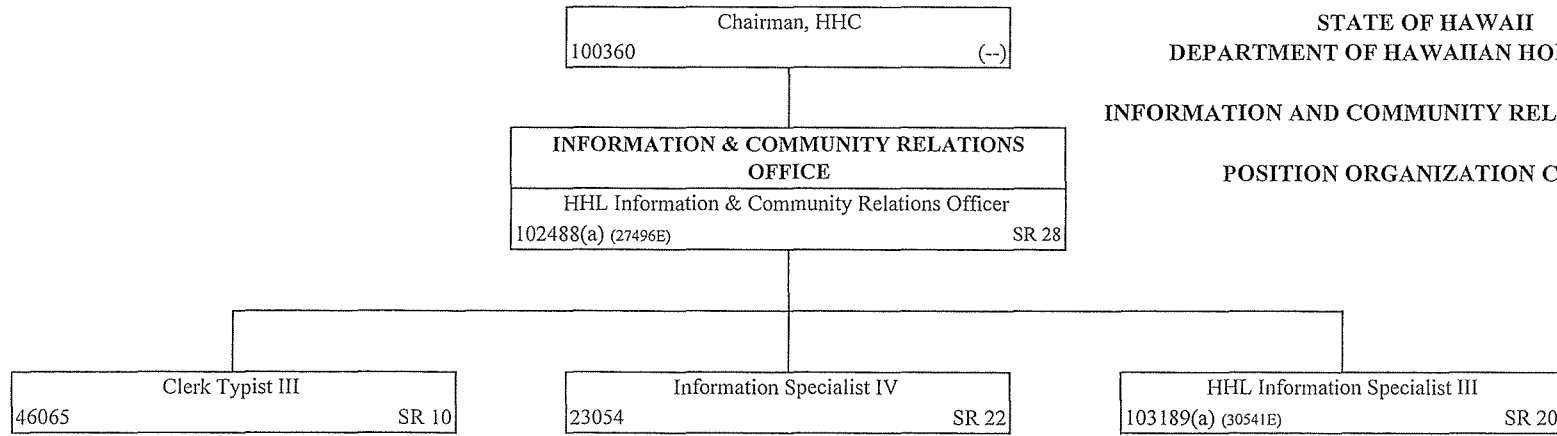
STATE OF HAWAII
DEPARTMENT OF HAWAIIAN HOME LANDS
INFORMATION & COMMUNITY RELATIONS OFFICE
ORGANIZATION CHART



STATE OF HAWAII
DEPARTMENT OF HAWAIIAN HOME LANDS

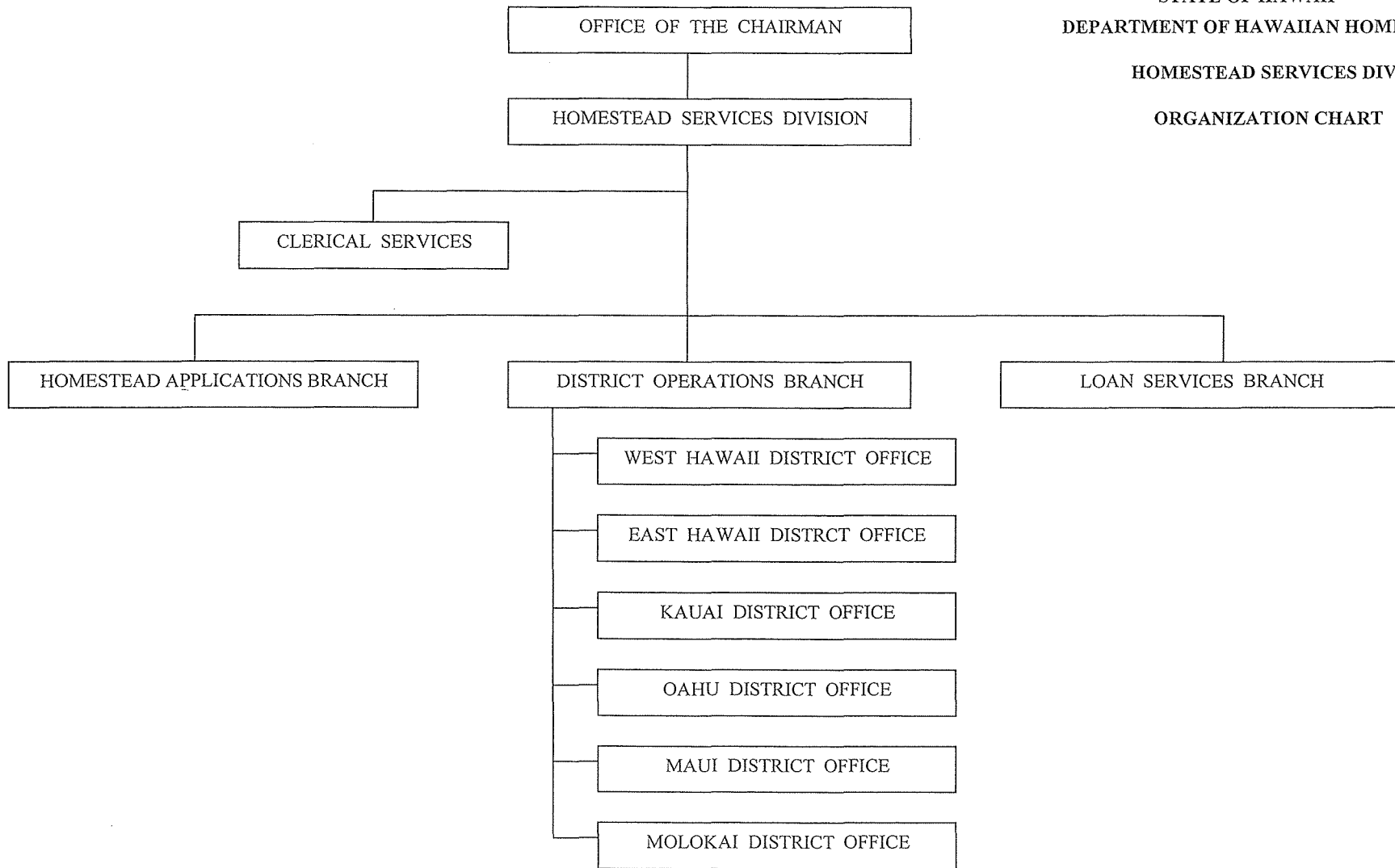
INFORMATION AND COMMUNITY RELATIONS OFFICE

POSITION ORGANIZATION CHART



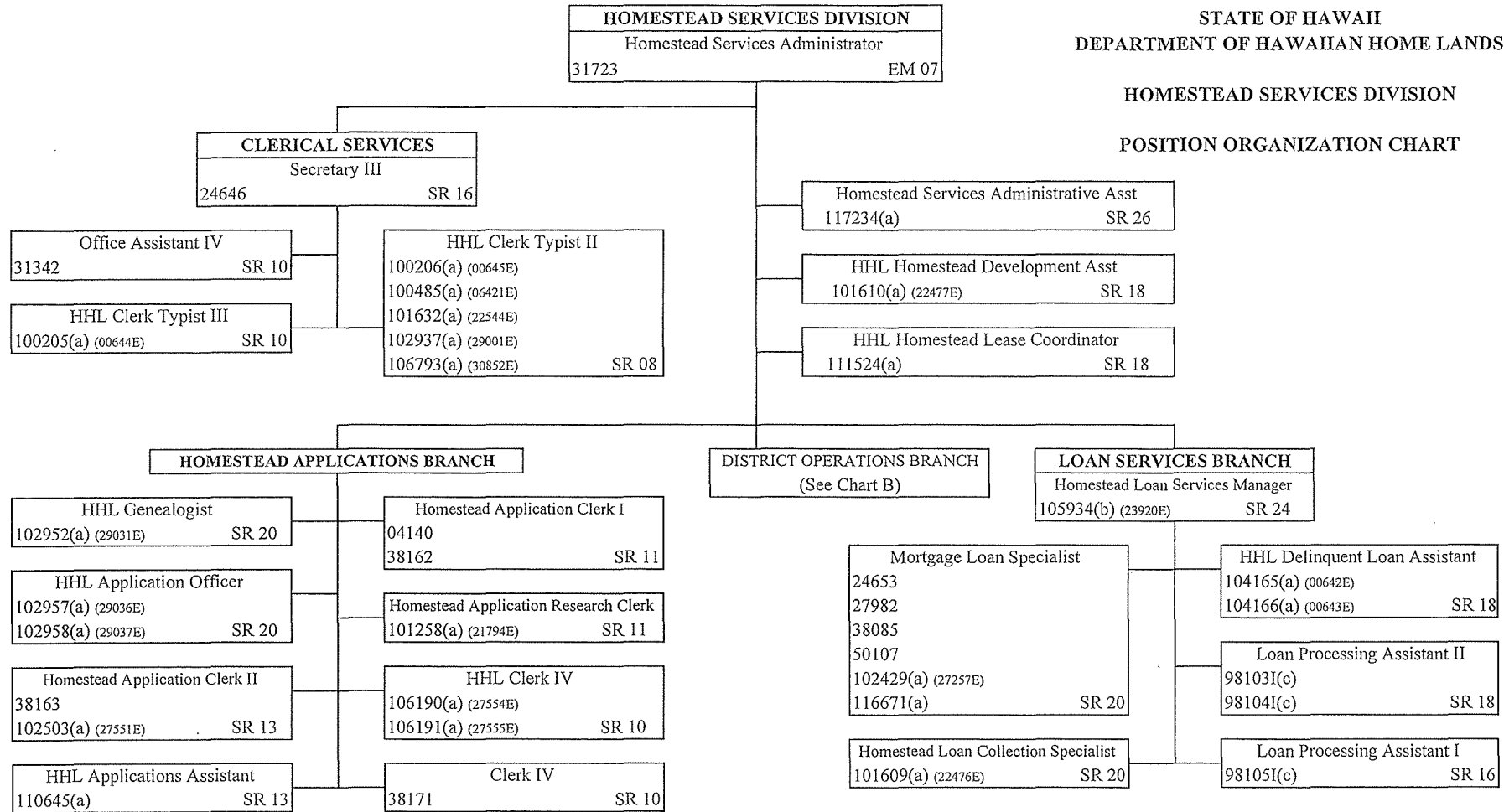
(a) Exempt position

STATE OF HAWAII
DEPARTMENT OF HAWAIIAN HOME LANDS
HOMESTEAD SERVICES DIVISION
ORGANIZATION CHART



STATE OF HAWAII
DEPARTMENT OF HAWAIIAN HOME LANDS

HOMESTEAD SERVICES DIVISION
POSITION ORGANIZATION CHART



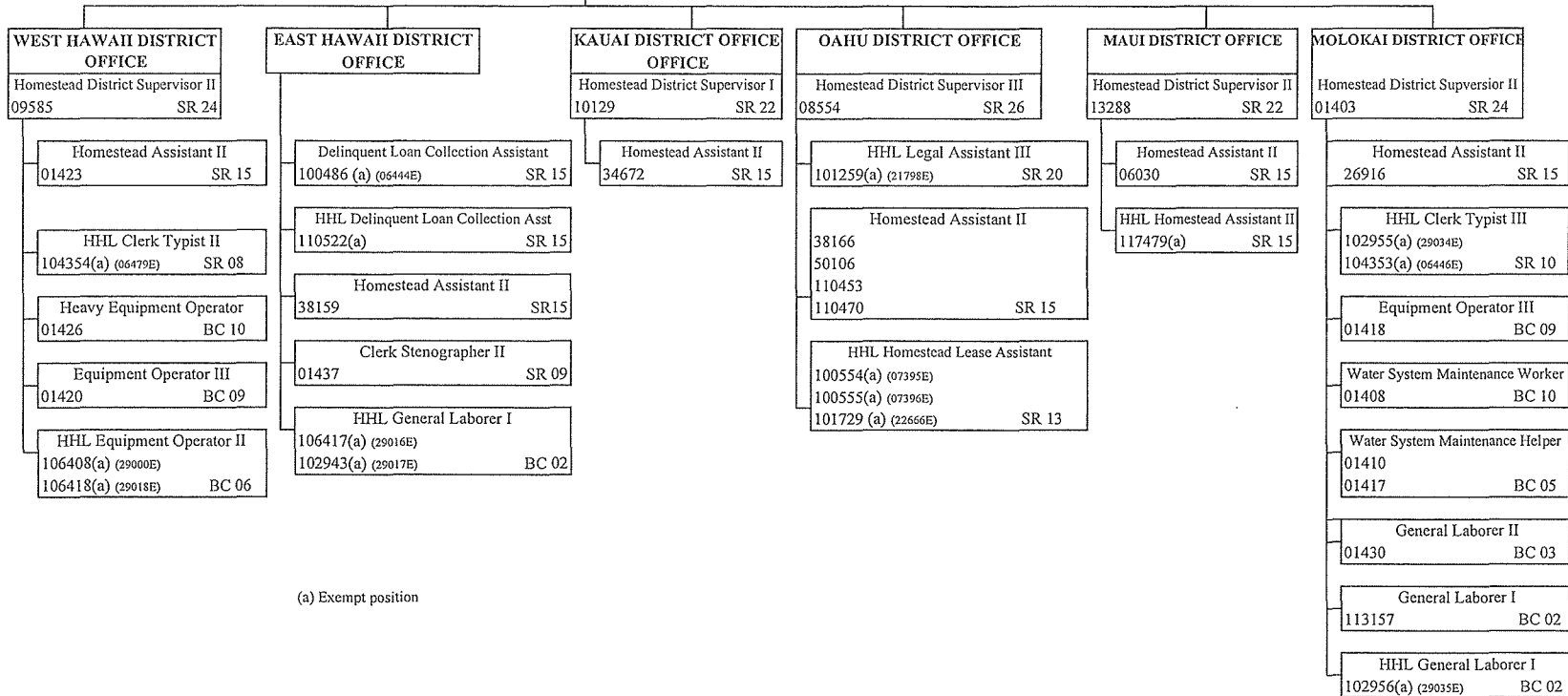
- (a) Exempt position
- (b) Temporary exempt position to be abolished when permanent position authorized by Act 92, SLH 1986, is classified and filled
- (c) Authorized by Act 289, SLH 1993, but not as yet classified

HOMESTEAD SERVICES DIVISION
 Homestead Services Administrator
 31723 EM 07

DISTRICT OPERATIONS BRANCH
 Homestead District Operations Manager
 38167 EM 05

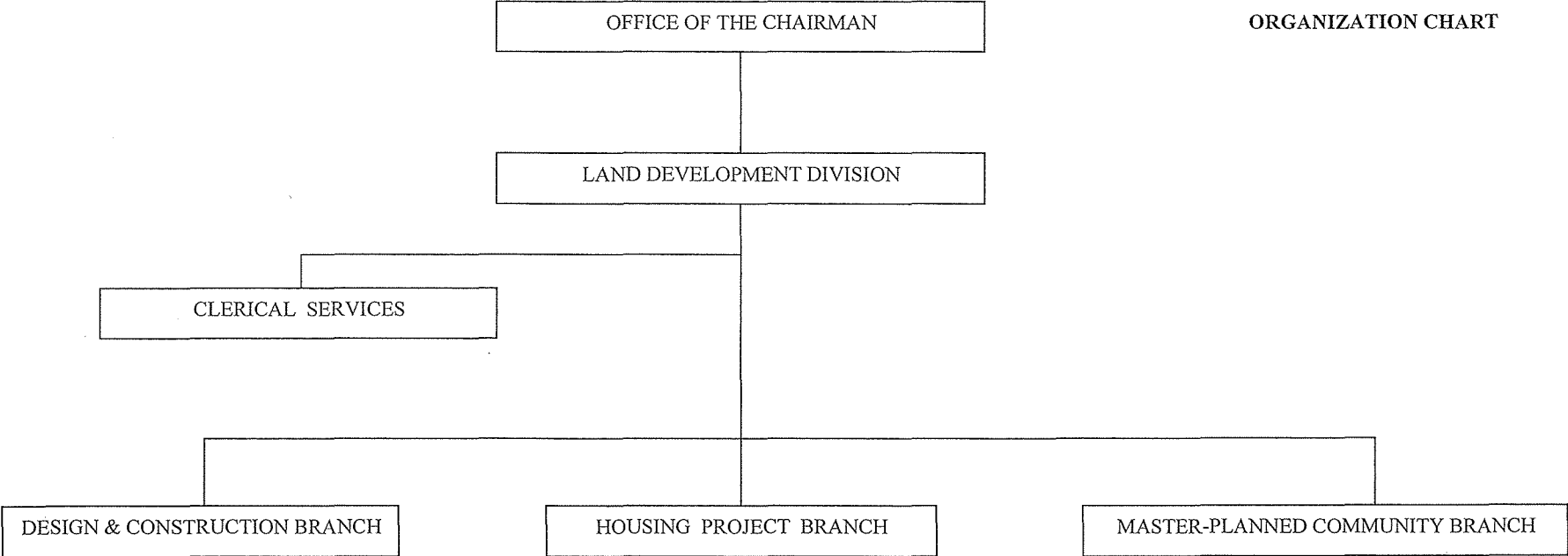
STATE OF HAWAII
 DEPARTMENT OF HAWAIIAN HOME LANDS

HOMESTEAD SERVICES DIVISION
 DISTRICT OPERATIONS BRANCH
 POSITION ORGANIZATION (CHART B)



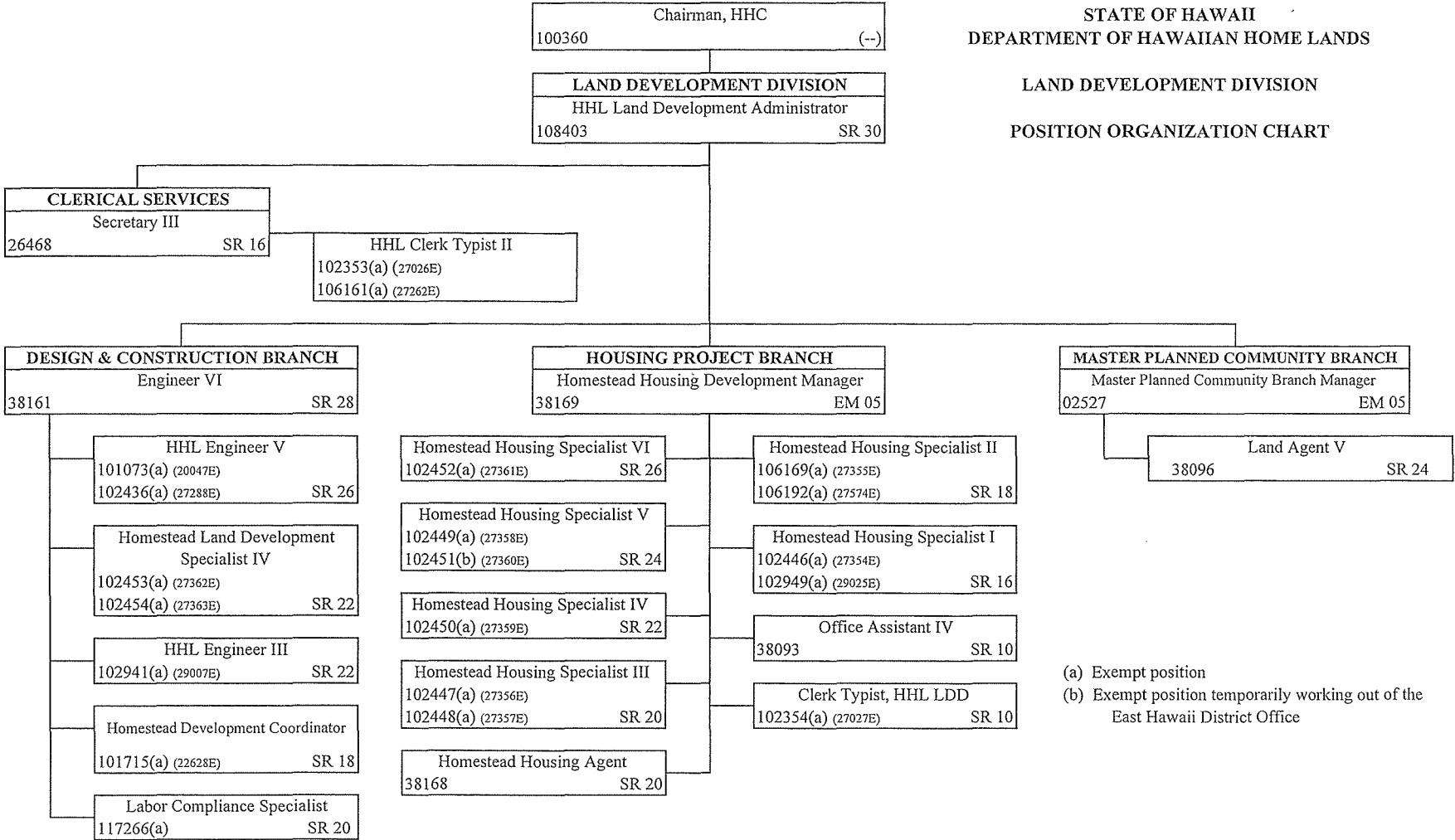
(a) Exempt position

STATE OF HAWAII
DEPARTMENT OF HAWAIIAN HOME LANDS
LAND DEVELOPMENT DIVISION
ORGANIZATION CHART



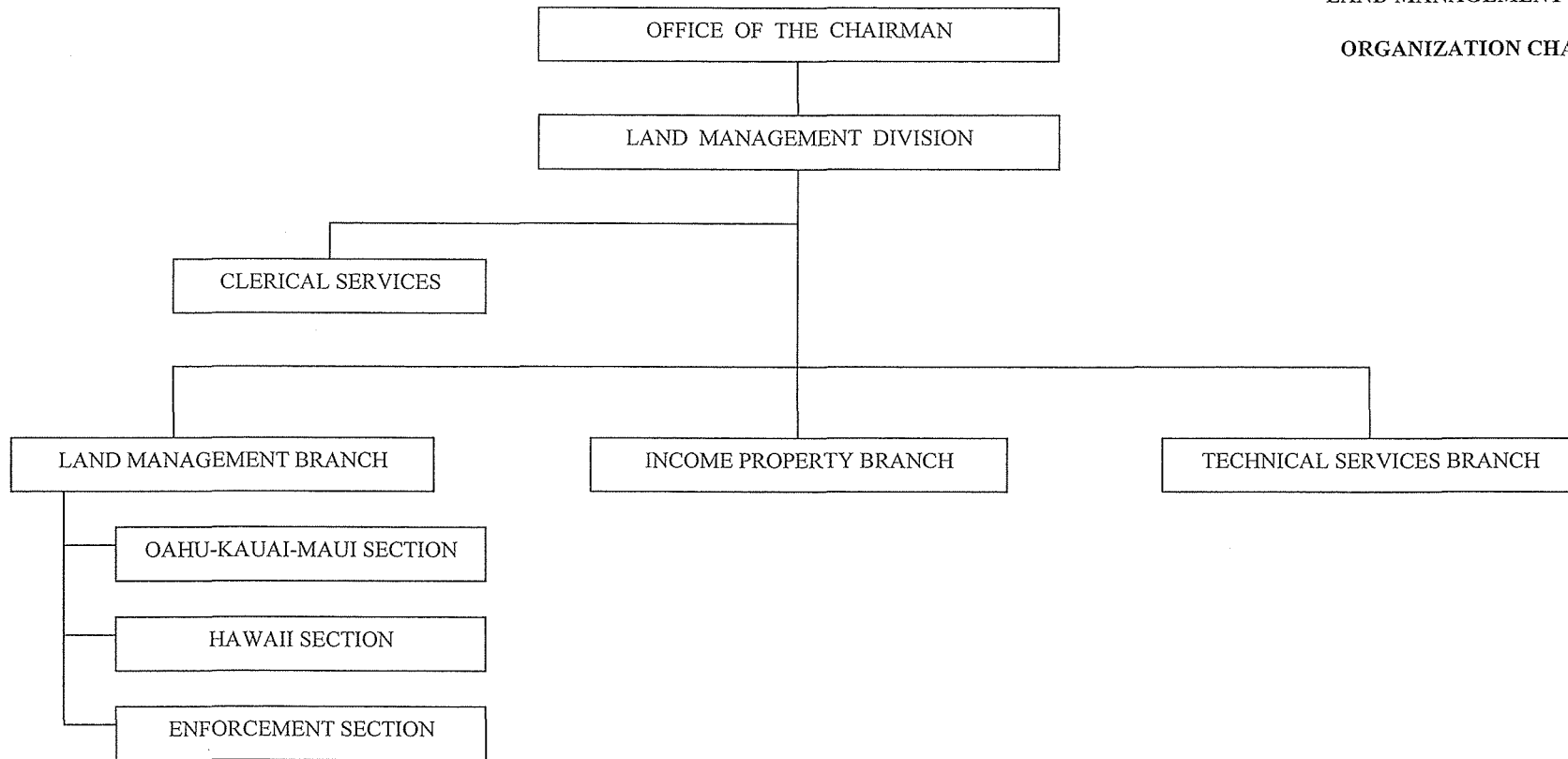
STATE OF HAWAII
DEPARTMENT OF HAWAIIAN HOME LANDS

LAND DEVELOPMENT DIVISION
POSITION ORGANIZATION CHART



(a) Exempt position
(b) Exempt position temporarily working out of the East Hawaii District Office

STATE OF HAWAII
DEPARTMENT OF HAWAIIAN HOME LANDS
LAND MANAGEMENT DIVISION
ORGANIZATION CHART



STATE OF HAWAII
DEPARTMENT OF HAWAIIAN HOME LANDS

LAND MANAGEMENT DIVISION

POSITION ORGANIZATION CHART

Chairman, HHC
100360 (--)

LAND MANAGEMENT DIVISION
HHL Land Management Administrator
102961 SR 30

CLERICAL SERVICES
Secretary III
47860 SR 16

HHL Clerk Typist II
101630(a) (22542E) SR 08

LAND MANAGEMENT BRANCH
Supervising Land Agent
28720 SR 26

OAHU-KAUAI-MAUI SECTION
Land Agent V
38097 SR 24

HHL Land Agent IV
105800(b) (21796E)
106421(a) (29028E) SR 22

HAWAII SECTION

Land Agent III
48582 SR 20

RESOURCE MANAGEMENT SECTION
HHL Resource Management Specialist
(Water)
111868(a) SR 24

ENFORCEMENT SECTION
HHL Land Agent/Enforcement Officer II
102942(a) (29009E) SR 24

HHL Land Agent/Enforcement Officer I
106411(a) (29010E)
117165(a) SR 20

HHL Clerk Typist III
106110(a) (27028E) SR 10

INCOME PROPERTY BRANCH
Property Development Manager
106416(a) (29015E) SR 28

Property Development Agent
106413(a) 29012E
106414(a) (29013E) SR 26

HHL Clerk Typist III
106412(a) (29011E) SR 10

TECHNICAL SERVICES BRANCH
Appraisal/Technical Services
Manager
106415(a) (29014E) SR 28

HHL Land Agent V
100356(a) (04499E) SR 24

Land Agent IV
38098 SR 22

HHL Legal Assistant III
101260(a) (21799E) SR 20

- (a) Exempt position
- (b) Exempt position temporarily working out of the Molokai District Office