

The background features a large, light green watermark of the University of Hawaii seal. The seal is circular and contains a stylized torch with a flame. The text 'UNIVERSITY OF HAWAII' is written along the top inner edge, and 'MĀLAMALAMA' is written across the middle of the torch. The year '1907' is at the bottom. The Hawaiian phrase 'EA O KA 'ĀINA I KA PONO' is written along the bottom inner edge.

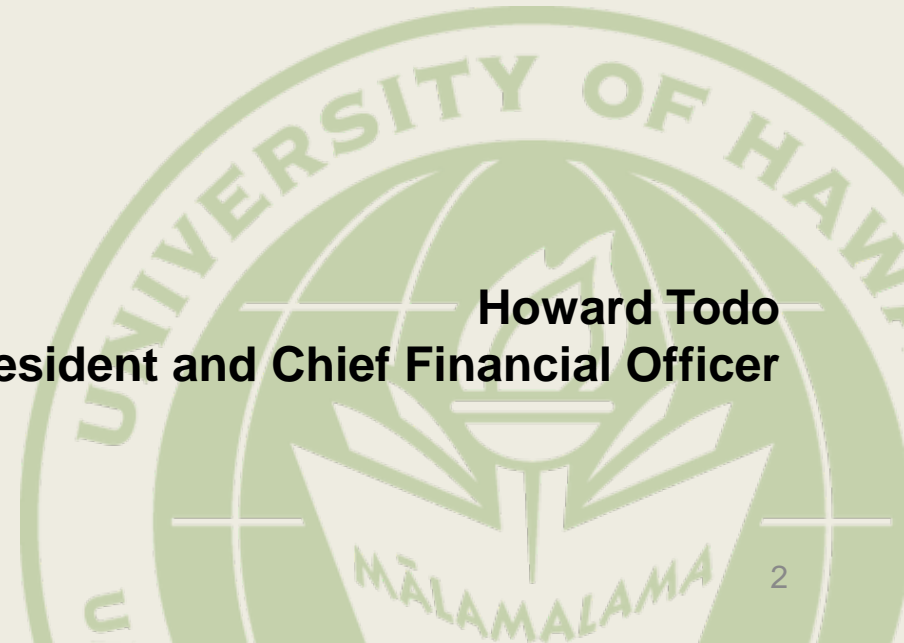
**Presentation to the
Legislative Federal Economic Stimulus
Program Oversight Commission**

**University of Hawaii
September 27, 2011**

PART I

STATE FISCAL STABILIZATION FUNDS

Howard Todo
Vice President and Chief Financial Officer



State Fiscal Stabilization Funds

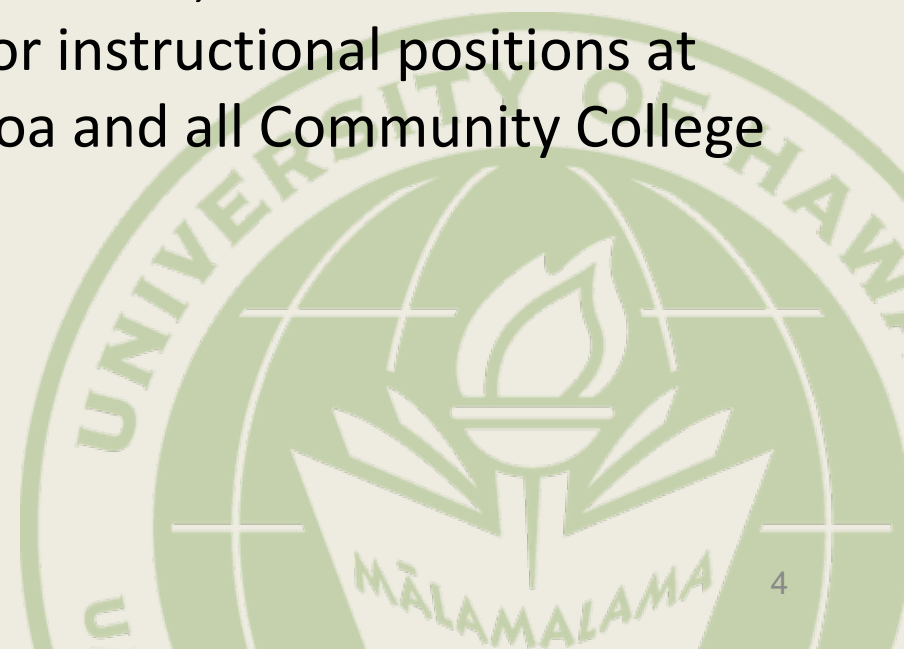
- State Fiscal Stabilization Funds were awarded to the Office of the Governor by the U.S. Department of Education to help stabilize State and local budgets in order to minimize reductions in education and other essential services.
- The University of Hawaii was a sub-recipient of this award.



SFSF Part A

Education Stabilization Funds

- Education Stabilization funds were used to partially offset General Fund restrictions imposed by the State Legislature.
- In accordance with the Memorandum of Agreement between the Governor of the State of Hawaii, the Department of Education, and the University of Hawaii, the funds were used to reimburse payroll expenses for instructional positions at the University of Hawaii at Manoa and all Community College campuses.



SFSF Part A
Education Stabilization Funds
University of Hawaii

Campus	Award Amount			Funds Expended	Award End Date	Percent Completed
	FY 2010	FY 2011	Total			
University of Hawaii - Manoa Campus	\$14,740,000.00	\$18,091,798.00	\$32,831,798.00	\$32,831,746.04	6/30/2011	100%
University of Hawaii - Community Colleges	\$6,960,000.00	\$6,960,000.00	\$13,920,000.00	\$13,920,000.00	6/30/2011	100%
Total:	\$21,700,000.00	\$25,051,798.00	\$46,751,798.00	\$46,751,746.04		100%

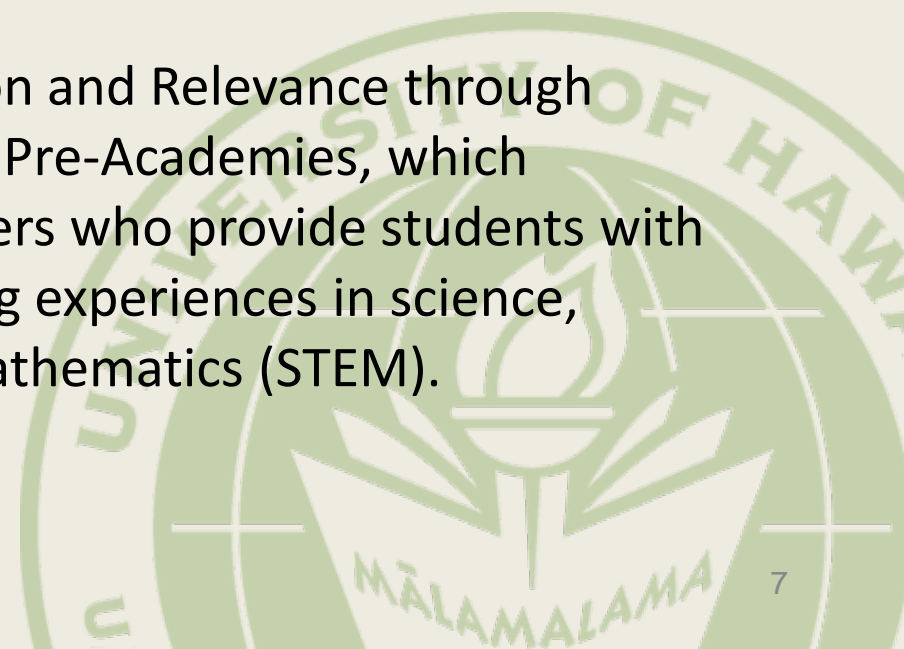
SFSF Part A
 Education Stabilization Funds
 Estimated Jobs Created/Retained Reported by Quarter

	FY 2010				FY 2011			
	Qtr 1	Qtr 2	Qtr 3	Qtr 4	Qtr 1	Qtr 2	Qtr 3	Qtr 4
UH Manoa		229.82	238.18	157.17	267.35	270.79	318.02	83.60
Community Colleges		207.53	171.54	48.91		208.20	188.26	42.99
TOTAL		437.35	409.72	206.08	267.35	478.99	506.28	126.59

SFSF Part B

Government Services Funds

- ARRA authorized states to use SFSF Part B funds for public safety and other government services, which may include assistance for elementary and secondary education and public institutions of higher education.
- As directed by the Governor's Office, the Government Services funds were used to support the following programs at the University of Hawaii:
 - UH Manoa: Fostering Inspiration and Relevance through Science and Technology (FIRST) Pre-Academies, which supported middle school teachers who provide students with problem-based, applied learning experiences in science, technology, engineering and mathematics (STEM).



SFSF Part B

(continued)

- UH Hilo: Reimbursement of salaries of positions involved in the instruction of the physical sciences, including, but not limited to, astronomy, biology, engineering, physics and mathematics.
- Honolulu Community College: Music and Entertainment Learning Experience (MELE), which further establishes and strengthens music and entertainment industry relationships through partnership with government and industry.
- Community Colleges: Reimbursement of salaries of specified positions with a preference for those positions involved in the instruction of science, technology, engineering or mathematics.

SFSF Part B
Government Services Funds
University of Hawaii

Campus/Program	Award Amount			Funds Expended & Encumbered*	Percent Completed	Award End Date	Comments
	FY 2010	FY 2011	Total				
University of Hawaii - Manoa Campus (FIRST) Pre-Academies	\$1,032,500.00	\$2,030,500.00	\$3,063,000.00	\$3,056,619.53	100%	7/31/2011	Completed
University of Hawaii - Hilo Campus (STEM)	\$300,000.00	\$300,000.00	\$600,000.00	\$599,999.25	100%	6/30/2011	Completed
University of Hawaii - Honolulu Community College MELE	\$0.00	\$402,300.00	\$402,300.00	\$381,301.63	95%	9/30/2011	Includes \$229,862.52 encumbered as of 09/20/11. All funds will be expended.
University of Hawai'i - Community Colleges (STEM)		\$500,000.00	\$500,000.00	\$0.00	0%	9/30/2011	Award received 09/06/11. Reimbursement of salaries through 09/30/11; all funds will be expended
	\$1,332,500.00	\$3,232,800.00	\$4,565,300.00	\$4,037,920.41	88%		

* As of September 20, 2011

SFSF Part B
 Government Services Funds
 Estimated Jobs Created/Retained Reported by Quarter

	FY 2010				FY 2011			
	Qtr 1	Qtr 2	Qtr 3	Qtr 4	Qtr 1	Qtr 2	Qtr 3	Qtr 4
UH Manoa - FIRST			4.09	7.48	7.61	8.52	9.40	11.94
UH Hilo			8.07	7.44	9.84	9.84	7.56	6.58
Community Colleges - MELE						1.00	1.00	0.67
TOTAL			12.16	14.92	17.45	19.36	17.96	19.19

PART II

COMPETITIVE AWARDS

Yaa-Yin Fong
Director, Office of Research Services



Competitive Awards

- The University of Hawaii has received competitive ARRA awards totaling \$115,390,927 as of 8/31/11, to conduct research and training primarily in the scientific and health-related fields and to provide and/or upgrade broadband fiber optic connectivity and wireless connections.



Competitive Awards University of Hawaii

SPONSORING AGENCY	NUMBER OF AWARDS	GOALS	AMOUNT
Department of Commerce	2	Provide and/or upgrade broadband fiber optic connectivity and wireless connections	\$35,922,160
Department of Education	2	Provide need-based financial aid to students through Federal Work-Study program	\$234,501
Department of Energy	4	<ul style="list-style-type: none"> • Research on Distributed Electricity Systems • Develop new cross-disciplinary program in renewable energy, energy efficiency and smart grid technologies • Restore and improve infrastructure of High Energy Physics Dept. 	\$8,935,585
Department of Health & Human Services / National Institute of Health	33	<p>Various research and training related to the following:</p> <ul style="list-style-type: none"> • Allergy & Infectious Diseases • Biomedical Training • Cancer • Cardiovascular Diseases • Child Health Development • Clinical Research • Diabetes, Digestive, Kidney Diseases • General Medicine • Genome • Heart, Lung, Blood • Mental Health • Nursing 	\$34,337,056

Competitive Awards University of Hawaii (continued)

SPONSORING AGENCY	NUMBER OF AWARDS	GOALS	AMOUNT
Department of Interior	2	<ul style="list-style-type: none"> • Understanding volcanic eruptions • Volcanic gas measurement and prediction 	\$421,000
Department of Justice	1	Research on Internet and Technology Facilitated Crimes Against Juveniles	\$435,689
National Science Foundation	38	Various scientific research and training related to: <ul style="list-style-type: none"> • Astronomy • Biological and Life Sciences • Marine Science and Oceanography • Physical and Earth Sciences • Provide and improve connectivity for science and technology research and education 	\$35,104,936
TOTAL:	82		\$115,390,927

Competitive Awards by End Date University of Hawaii

Award End Date Year	Award Amount	# of Awards	Amount Expended As of 8/31/11	% Expended As of 8/31/11
2009	\$ 6,664	1	\$ 6,584	100% complete
2010	\$ 956,312	9	\$ 938,110	100% complete
2011	\$ 16,232,461	27	\$ 11,226,088	69%
2012	\$ 26,406,419	35	\$ 8,435,194	32%
2013	\$ 68,941,900	9	\$ 9,892,870	14%
2014	\$ 2,847,171	1	\$ 932,118	33%
Totals	\$ 115,390,927	82	\$ 31,430,964	27%

Competitive Awards Estimated Jobs Created/Retained Reported by Quarter

	FY 2010				FY 2011			
	Qtr 1	Qtr 2	Qtr 3	Qtr 4	Qtr 1	Qtr 2	Qtr 3	Qtr 4
UH Competitive Awards	12.60	99.48	57.53	67.25	69.45	74.72	84.05	91.99

Final Comments

- For additional information on the University's competitive awards please refer to <http://www.ors.hawaii.edu/>.
- No audit findings related to SFSF and Competitive ARRA awards in the University's FY2010 A-133 Audit



Questions?

