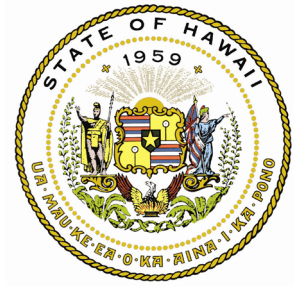


SENATE DISTRICT 18 COMMUNITY REPORT

AUGUST 2021 – *Serving Mililani Town, Waipio Gentry, Waikele, Village Park & Royal Kunia*



Aloha Friends and Neighbors,

We are mere weeks into the start of the new school year and heading into the fall, and I know I am not alone in my concerns over the mounting challenges we are facing. With the delta variant on the rise, we have seen the devastating impact of COVID-19 in the record number of cases in the month of August alone. These cases are overwhelming our healthcare system and even impacting our children, as the delta variant strain is 1,000x more contagious. Comparisons have been made between the the delta variant being as contagious as chicken pox, and with a current infection rate of roughly 7.2%, it is by no means alarmist to say that we are at a critical turning point in our community.

With new restrictions in place urging us to limit social gatherings, cap high-risk businesses at 50%, postpone recreational travel, reinstate more rigid safety precautions (especially mask-wearing and sanitization) and to stay home when we are able, it is clear that we are in crisis mode. Triage tents are set up outside all major hospitals and healthcare workers are begging the community to do our part to mitigate this pervasive community spread, as we are quickly hitting capacity on available beds. This poses a very real threat to non-COVID related healthcare issues: elective surgeries will likely be delayed, accident victims and other patients with life-threatening issues will be at further risks if care is delayed. These very real concerns beg us to do all that we can, starting with vaccinations. At present, 62% of Hawai'i's total population has been fully vaccinated, with 70% being partially vaccinated having at least one shot. We are still aiming to reach our 70% fully vaccination goal, but this target was not reached quickly enough.

We have continued to make strides over the course of the last year together by putting the health of the community at the forefront. We have made it our priority to protect and care for our most vulnerable, and our kupuna, as the virus made its greatest impact within that demographic. But now we must also do our part to protect our keiki, who are now being impacted at alarming rates, our youngest still ineligible for the vaccine. What we can do is to ensure the greatest precautions for ourselves and those within our circles to encourage vaccinations for those who are able. The threat this poses is paramount to the health and safety of our community and the progress we make over the coming months. I urge you to join me in doing everything we can to help mitigate the spread of the delta variant to protect our loved ones and our community and give relief to our frontline workers. Click [HERE](#) for an updated list of restrictions and statewide mandates released from the Governor's office.



SENATE VICE PRESIDENT

Chair:
Committee on Education

Vice Chair:
Committee on
Higher Education

Member:
Committee on
Ways and Means

Member:
Special Committee on
COVID-19

Hawaii State Capitol
Room 228
(808) 586-7100

senkidani@capitol.hawaii.gov

INDOOR & OUTDOOR GATHERINGS

- Social gatherings **indoors** are limited to **no more than 10 people**.
- Social gatherings **outdoors** limited to **no more than 25 people**.



@HAWAIISENATE



HIGH RISK ACTIVITIES

- High Risk Activities (bars, restaurants, gyms, etc.) are allowed **up to 50% capacity**. Patrons must be seated and maintain social distance (six feet). No mingling will be allowed and **masks must be worn**.



@HAWAIISENATE

Head to [My Official Capitol Web Page](#) for a complete archive of my monthly newsletters

VISIT FROM FLOTUS, DR. JILL BIDEN



I had the extraordinary honor of welcoming our First Lady, **Dr. Jill Biden**, to Waipahu High School's vaccine clinic during her recent visit to Hawai'i! Not only was it amazing to see the clinic in action, but to see it staffed by WHS graduates made it even more impactful. I was proud to stand alongside our dedicated educators and HSTA leadership, listening to Dr. Biden share her mana'o and encourage the community to receive their COVID-19 vaccine. A passionate educator herself, Dr. Biden is uniquely poised to inspire our teachers, and I am truly grateful to have had the opportunity to meet such a remarkable leader. Mahalo nui to WHS Principal, Keith Hayashi, for his generous invitation and this wonderful opportunity to share our aloha with the First Lady.

ALOHA, SUPERINTENDENT HAYASHI!



Congratulations and a heartfelt aloha to Interim Superintendent **Keith Hayashi**. I have had the honor of knowing him for many years as the Principal of Waipahu High School and know that his heart for students and both his wealth of experience and vast knowledge will serve him well in this position. He is facing unprecedented challenges in this first month of the school year. I have no doubt that he will serve the community with determination to protect the health, safety and education of our keiki and staff.



FREE COVID TESTING
throughout the month of
August at Aloha Stadium! Testing is
available **Tues/Thurs 10am-2pm** and
Sat/Sun 10am-4pm and accepting walk-ins.

**Make the most of these services if you or
your loved ones are in need of a covid test!**

COVID-19 VACCINE RESOURCES:

1. [Vaccine Registration](https://hawaii-covid19.com/vaccination-registration/)

Currently accepting vaccination registrations for kupuna ages 75 and older. Eligibility is required based upon Hawai'i's tiered program and must review the prevaccination checklist before receiving their vaccine.

<https://hawaii-covid19.com/vaccination-registration/>

2. [Hawaii Vaccination Plan](https://www.oneoahu.org/vaccine)

For more information regarding Hawai'i's detailed vaccination plan, please refer to the CDC-approved executive summary noting the operational structure to reach high-risk groups as quickly and efficiently as possible.

<https://www.oneoahu.org/vaccine>

3. [Vaccine Provider Map](https://www.oneoahu.org/find-vaccine)

A list of O'ahu vaccine clinics (including pop-up and mass vaccination sites) where you can receive your COVID-19 vaccination.

<https://www.oneoahu.org/find-vaccine>

4. [Vaccine Safety & FAQs](https://www.oneoahu.org/vaccine)

One Oahu offers information on Hawai'i's distribution plan, safety, what to expect and a list of FAQs to address community vaccine concerns. It is important to note that people who have recovered from COVID-19 are still urged to receive the vaccine with new variants being introduced into the country and natural immunity varying between individuals. Hyper hygiene is still urged after receiving a vaccination.

<https://www.oneoahu.org/vaccine>

SPECIAL COMMITTEE ON ACCOUNTABILITY

Senate President appointed a Special Committee on Accountability to conduct fact finding on State procurement of various agencies. Senator Moriwaki is chairing this committee along with Ways and Means Chair, Senator Dela Cruz, as vice-chair. I am also a member of this committee alongside Senators Kim and Fevella. Fact finding will include information from various State department or agencies dealing with large contracts— including, but not limited to— the Department of Accounting and General Services, Department of Transportation, Department of Education, University of Hawaii, and Department of Land and Natural Resources. The information obtained from this committee will assist the Senate Standing Committees on Government Operations and Ways and Means to look at procurement reform legislation to be introduced in the 2022 regular session. All informational briefings will be accessible to the public via YouTube in the coming weeks.

SIGN WAVING FOR PEDESTRIAN SAFETY

In honor of Pedestrian Safety Month this August, I joined HPD, my Mililani Rotary Club members, Mililani Lions, Department of Transportation and volunteers from Walk Wise Hawaii at the Town Center of Mililani to sign wave with the Honolulu Police Department. It was an important opportunity to bring awareness to our community about the importance of pedestrian safety. We must do the everything we can to drive safely, reduce the risk of pedestrian accidents on our local roads and keep our community safe!



I was joined by Rotary Club President Paul Nakachi, Representatives Okimoto and Matsumoto, Councilmember Tulba as well as Walk Wise Hawaii'i coordinator Lance Rae and many others to raise awareness about pedestrian safety.



SPECIAL COMMITTEE ON COVID-19

When the Senate Special Committee on COVID-19 held a hearing earlier this month to assess the surge of cases throughout the state, we were already at capacity with a slow, steady rise while also preparing to welcome the new school year. I have been pushing for a need to increase availability for distance learning and for consistency in instruction. Those urgent requests have continued to increase as our case numbers have sky rocketed over the past few weeks. These statewide surges have left us in a much more dire situation.

Mililani YMCA
+ Kaiser Permanente
Vaccination Clinics

Sept. 12th, 10am-12pm
Oct. 3rd, 10am-12pm
Oct. 24th, 10am-12pm
Nov. 14th, 10am-12pm

*Pfizer Vaccine
Walk-Ins Welcome

COMMUNITY RESOURCES:

1. [State of Hawaii COVID-19 Portal](https://hawaii.covid19.com)

The official Hawai'i state portal for all the latest updates, vaccine PODs and information on COVID-19:

<https://hawaii.covid19.com>

2. [One Oahu](https://www.oneoahu.org)

The City & County of Honolulu's official COVID-19 Response Team site offers pandemic updates and helpful community resources:

<https://www.oneoahu.org>

3. [Hawaii State Department of Health](https://health.hawaii.gov)

The official DOH website notes the most recent health updates as directed by CDC and FDA guidelines on COVID-19 for the state of Hawai'i:

<https://health.hawaii.gov>

4. [Kupuna Vaccine Hotline](https://www.oneoahu.org)

Open 7am-10pm seven days a week, the hotline is available to assist kupuna ages 65+ with vaccine registrations as well as for those with limited access to technology, language barriers, those without transportation or family. **Call 211 for help today!**

5. [Covid Testing Sites](https://www.oneoahu.org/covid19-testing)

A comprehensive list of COVID-19 screening and FREE testing sites available throughout O'ahu. Please call ahead to confirm each facility's testing and appointment protocols, availability, and pricing.

<https://www.oneoahu.org/covid19-testing>

PEARL CITY/WAIPAHU DISTRICT TEACHER OF THE YEAR

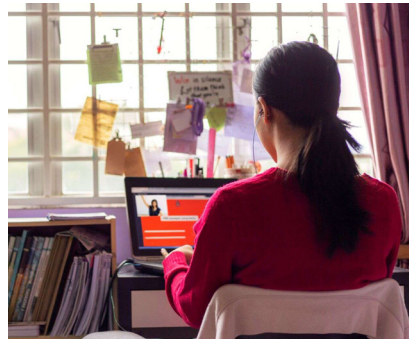


Principal Stacie Kuniyoshi and I and the Kanoelani community recognized the 2022 Pearl City/Waipahu District Teacher of the Year, **Ashley Ito-Macion!** Ashley's unwavering commitment to students and faculty has been an asset to their success, and her innovative "Grow With Us" platform helped to foster connection and support to educators throughout the pandemic. Congratulations Ashley and mahalo nui for your amazing diligence, passion and hard work!



BBB WARNING FOR COLLEGE SCAMS

The Better Business Bureau warns of new college scams targeting college students. From phishing emails to email claims of economic stimulus checks, new online tactics have been aimed at scamming students between the ages of 18-24 who are at great risk. Click [HERE](#) for a link to the BBB's website to learn more about these scams and how to avoid them.



COVID BOOSTER SHOTS FROM HAWAII PACIFIC HEALTH



The Hawai'i Pacific Health COVID-19 vaccine clinic began administering coronavirus booster shots at Waipahu High School on Aug. 14th. The FDA approved shots are available for those with compromised immune systems. HPH prefers people receive boosters of the same brand of their previous doses. Appointments are recommended and attendees must have received their second dose at least 28 days prior. Click [HERE](#) to make an appointment at HPH on Oahu.

HAWAII BLOOD BANK DONATIONS

The Blood Bank of Hawaii is experiencing a critical shortage of all blood types and requesting healthy donors to donate as soon as possible. While they normally see a 15% drop in donations this time of year, the pandemic has increased this critical shortage when we need it most. In our district, the Waialeale Center location is open 7 days a week and accepting donations M-T from 8am-2pm, W-Th from 12pm-6pm and F-Sun from 7am-3pm. Please click [HERE](#) for more information and donate blood today!



EDUCATION RESOURCES:

1. [2021-2022 Distance Learning Programs](https://www.hawaiipublicschools.org/Pages/DistanceLearning.aspx?fbclid=IwAR3j3f44DR_IQsflg-wu5idV9xGFDt9Z2N3IKMH-8CuDg5VqLLQst0OQVmdQ)

A comprehensive list of online programs available to all students and families looking for DOE approved distance learning program options:

https://www.hawaiipublicschools.org/Pages/DistanceLearning.aspx?fbclid=IwAR3j3f44DR_IQsflg-wu5idV9xGFDt9Z2N3IKMH-8CuDg5VqLLQst0OQVmdQ

2. [Emergency Broadband Benefit Program](https://www.getemergencybroadband.org)

This Federal Communications Commission program provides a temporary discount on monthly broadband bills for qualifying low-income households towards internet service and equipment rentals as well as a one-time discount of up to \$100 for computers and devices. To begin applying and enrolling head to their website:

[getemergencybroadband.org](https://www.getemergencybroadband.org)

3. [Third Round of P-EBT](https://humanservices.hawaii.gov/bessd/1961-2/)

The Department of Human Services and the Department of Education announced a third round of Pandemic Electronic Benefit Transfer Program (P-EBT) benefits for keiki who qualify for free or reduced-price school meals, or attend a Community Eligibility Provision school during the pandemic.

<https://humanservices.hawaii.gov/bessd/1961-2/>