

SENATOR GILBERT S.C. KEITH-AGARAN

WAILUKU • WAIHĒ • KAHULUUE

march 2020 • volume 12 • issue 2

a message from gil

Aloha Kākou,

The 2020 legislative session just passed the midway point. Of the approximately 1,200 Senate bills introduced this year, along with the 1,500 that carried over from last session, nearly 500 measures passed through all the assigned committees and crossed over to the House, while nearly 400 House bills were sent to the Senate. These remaining bills have survived the gauntlet of public hearings and testimony from community advocates, private-sector stakeholders and government agencies. The legislative process of hearings and amendments will now be repeated by each chamber.

In this issue you will find the legislature's initial response to the COVID-19 coronavirus global outbreak, an explanation of the ALICE model for low-income families, and highlights of Senate measures that the House will now consider. These bills include issues related to affordable housing tax credits, teacher incentives and early education for keiki, and the youth vaping epidemic.

As part of my duties as Vice Chair of the Ways and Means Committee, I will be focused on balancing the state budget, including funding proposed state Capital Improvement Projects (public construction) and Grants-in-Aid for community non-profits.

As always, I welcome your comments about how our work at the Capitol affects your life on the Valley Isle. Mahalo for your continued attention to keeping Maui one of the best places to live, work, and raise our families.

Sincerely,

Gilbert S.C. Keith-Agaran

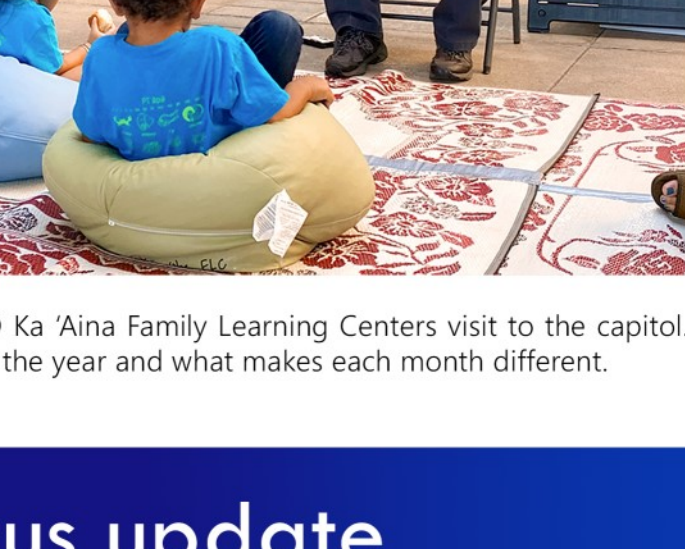
in this issue

- A MESSAGE FROM GIL
- PHOTOS OF SENATE EVENTS
- CORONAVIRUS UPDATE
- THE ALICE MODEL
- NOTABLE BILLS CROSSED FROM THE SENATE TO THE HOUSE

photos



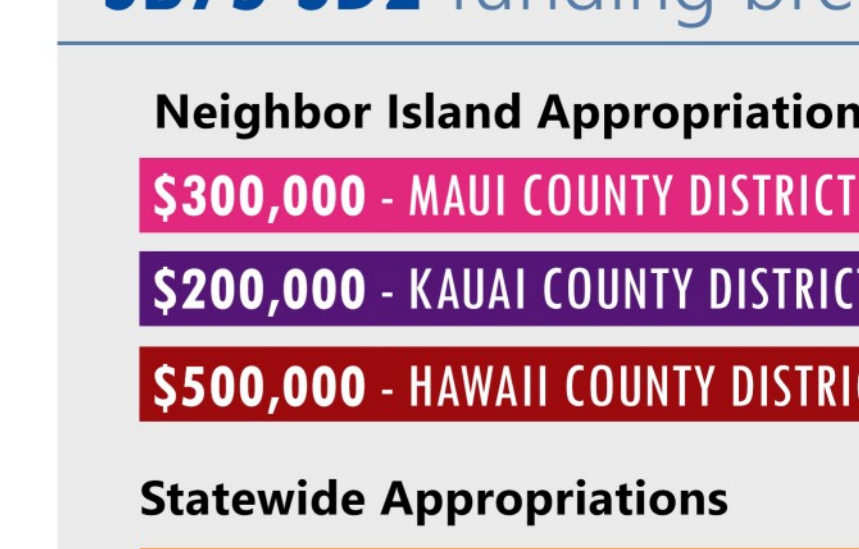
Maui legislators met with the 2019-2020 Ka Ipu Kuku fellows to talk about current issues and the legislative process.



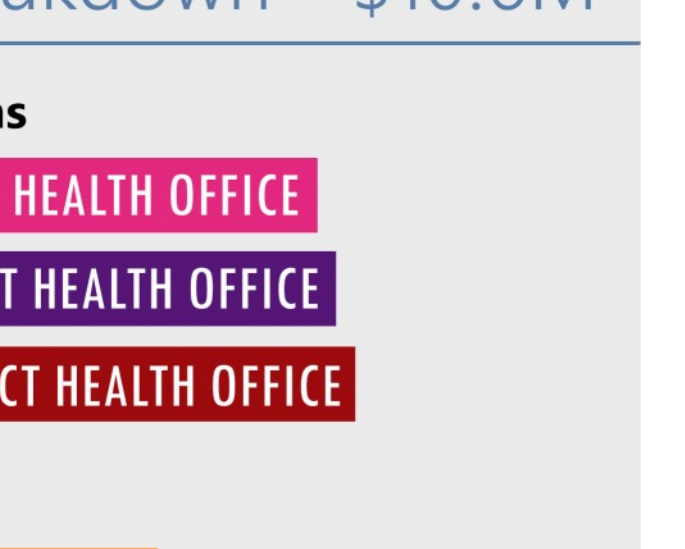
Practicing safe hygiene with a fist bump while greeting guests on the Senate floor.



Valley Isle businesses Maui Gold Pineapple and Mahi Pono came to the Capitol for Agricultural Awareness Day, an annual event where local farmers and agriculture business educate the public and showcase their products.



Legislators were invited to read to children as part of the Keiki O Ka 'Āina Family Learning Centers visit to the capitol. I read "Here We Go" around the Year," a book about the months of the year and what makes each month different.



COVID-19 coronavirus update in the legislature

The Senate passed **SB 75 SD 2**, making an emergency appropriation to anticipate local impacts of the growing COVID-19 outbreak. The measure is currently awaiting a hearing in the House of Representatives.

The bill provides \$10.6M to the Department of Health, the Department of Transportation, and the Department of Defense for initial responses, including four new full-time staff positions within the Department of Health.

SB75 SD2 funding breakdown - \$10.6M

Neighbor Island Appropriations	
\$300,000	MAUI COUNTY DISTRICT HEALTH OFFICE
\$200,000	KAUAI COUNTY DISTRICT HEALTH OFFICE
\$500,000	HAWAII COUNTY DISTRICT HEALTH OFFICE
Statewide Appropriations	
\$2.5M	DISEASE OUTBREAK SURVEILLANCE
\$1.3M	LAB TESTING, EQUIPMENT, AND SUPPLIES
\$200,000	QUARANTINE AND SELF-MONITORING
\$800,000	MULTIMEDIA PUBLIC EDUCATION CAMPAIGNS
\$600,000	HAND SANITIZING STATIONS IN PUBLIC AREAS
\$2.8M	DEPARTMENT OF TRANSPORTATION HARBORS AND AIRPORTS FACILITIES, STAFFING, AND MEDICAL SERVICES
\$1.2M	DEPARTMENT OF DEFENSE EMERGENCY MANAGEMENT

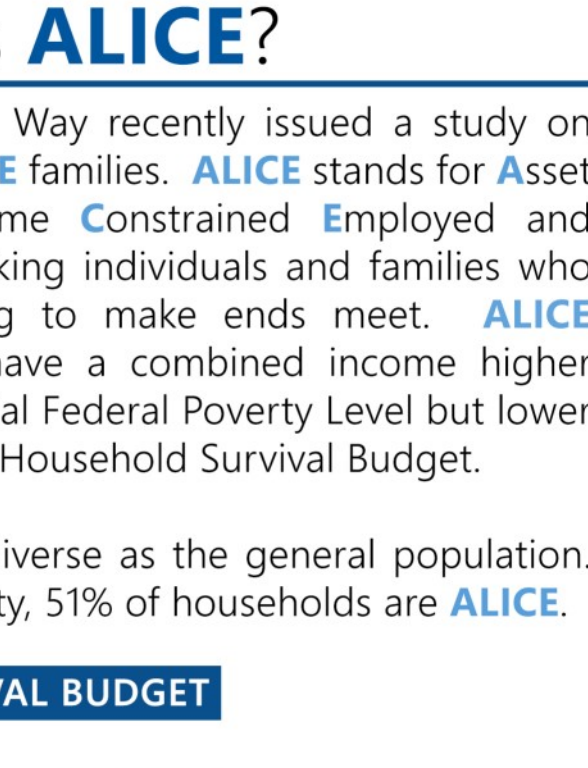
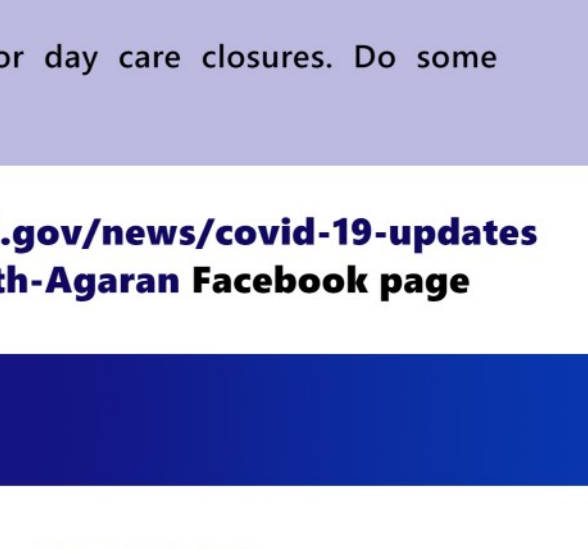
precautions for seniors

Seniors are at a greater risk for COVID-19, especially those who have underlying health conditions. Older adults and individuals with underlying health issues should avoid non-essential travel, including cruises. Neighbor island residents with scheduled medical treatment or follow-up care on Oahu should consult with their doctors. Seniors should avoid large crowds, wash their hands often, and keep medications and groceries on-hand.

For the latest situation reports from the World Health Organization, visit who.int/emergencies/diseases/novel-coronavirus-2019/situation-reports

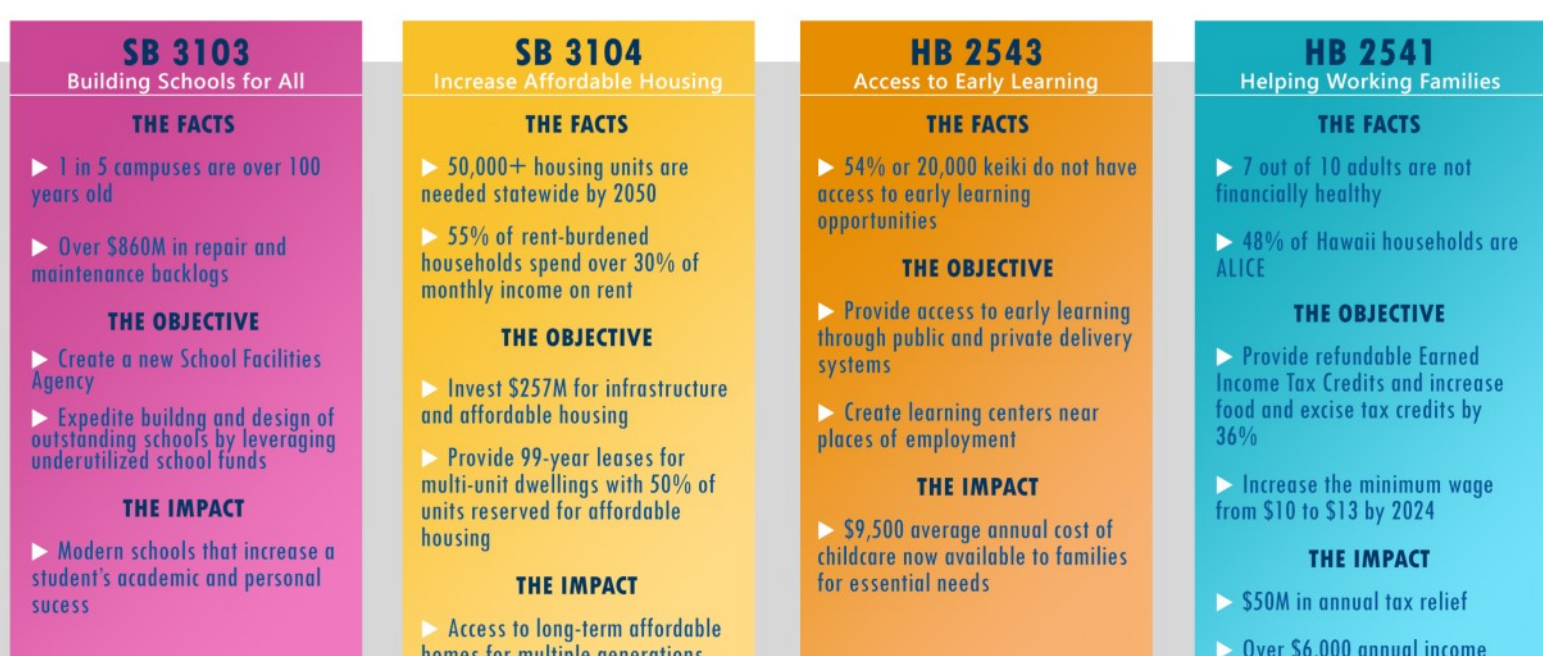
The Department of Health advises people who think they may have symptoms of COVID-19 to contact their healthcare provider in advance of going to a medical facility.

- ▶ Tell your provider about your symptoms and any recent travel. Healthcare providers will discuss any possible cases of COVID-19 with DOH to determine if testing is needed.
- ▶ Consider utilizing tele-health services, if available.
- ▶ Avoid traveling or leaving home if you are sick, except for visiting your doctor after contacting them in advance.



preventing the spread of misinformation and disease

The Department of Health is committed to sharing information as it becomes available. People are urged not to spread misinformation or inaccurate statements that are not confirmed, and keep updated and informed on the situation. Everyone can help prevent the spread of respiratory illness with these everyday actions.



- ▶ Wash your hands often with soap and water for at least 20 seconds.
- ▶ Avoid touching your eyes, nose, and mouth with unwashed hands.
- ▶ Avoid close contact with people who are sick.
- ▶ Stay home when you are sick.
- ▶ Cover your cough or sneeze with a tissue, then throw the tissue in the trash.
- ▶ Clean and disinfect frequently touched objects and surfaces using a regular household cleaning spray or wipe.
- ▶ CDC does not recommend that people who are well wear a facemask to protect themselves from illnesses, including COVID-19. Masks in front-line health care workers. If you are sick then wear a mask to protect the people around you.
- ▶ Prepare for the possibility that people may want to stay home or may be asked to stay home to prevent the spread of illness.
- ▶ If you have daily medication needs, have more than a week's supply on hand and have as much on hand as your insurance will allow you to have.
- ▶ Not everyone can afford to stock up on supplies or has the space to store them, but anything you can arrange in advance means one less inconvenience or one less trip to the store while you are sick.
- ▶ Make family plans for the possibility of school or day care closures. Do some contingency planning in advance at the family level.

Sign up for public notifications at health.hawaii.gov/news/covid-19-updates or visit the [Hawaii State Senator Gilbert Keith-Agaran Facebook page](#)

hawaii's ALICE families

Asset Limited Income Constrained Employed

Who is ALICE?

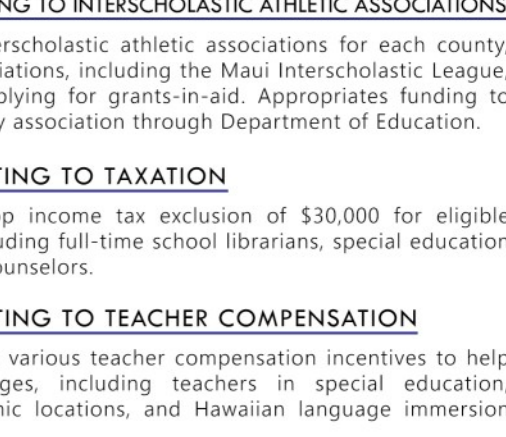
Aloha United Way recently issued a study on Hawaii's ALICE families. ALICE stands for Asset Limited Income Constrained and Employed and refers to working individuals and families who are struggling to make ends meet. ALICE households have a combined income higher than the official Federal Poverty Level but lower than Hawaii's Household Survival Budget.

ALICE is as diverse as the general population. In Maui County, 51% of households are ALICE.



ALICE in the Legislature

The Legislature, with the Governor and community advocates, is considering four measures aimed at assisting ALICE individuals and families by lowering the cost of living. These bills are the first critical step to helping ALICE residents thrive in Hawaii.



Bill Number	Topic	Key Facts	Objective	Impact
SB 3103	Building Schools for All	1 to 5 campuses are over 100 years old; Over \$800M in repair and maintenance backlog.	Create a new School Facilities Agency; Create the building and design of outstanding schools by leveraging underutilized school funds.	Modern schools that increase a student's academic and personal success.
SB 3104	Increase Affordable Housing	50,000+ housing units are needed statewide by 2050; 55% of rent-burdened households spend over 50% of monthly income on rent.	Invest \$257M for infrastructure and affordable housing; Provide 99-year leases for multi-unit dwellings with 50% of units reserved for affordable housing.	Access to long-term affordable homes for multiple generations.
HB 2543	Access to Early Learning	41% to 70,000 kids do not have access to early learning opportunities.	Provide access to early learning through public and private delivery systems; Create learning centers near places of employment.	\$9.50 average annual cost of childcare now available to families for essential needs.
HB 2541	Helping Working Families	7 out of 10 adults are not financially healthy; 48% of Hawaii households are ALICE.	Provide refundable Earned Income Tax Credits and Increased Food and Excise Tax Credits by 35%; Increase the minimum wage from \$10 to \$13 by 2024.	\$50M in annual tax relief; Over \$6,000 annual income increase for a full-time worker.

notable crossover bills

As part of the legislative process, all bills must be considered by both chambers. The following are highlights of bills that the Senate passed to the House of Representatives.

For a full list of bills, visit <http://www.capitol.hawaii.gov>

senator keith-agaran's bills

SB2664 SD1 RELATING TO THE BOARD OF EDUCATION	SB591 SD1 RELATING TO PUBLIC SCHOOLING
Requires the Board of Education to hold no less than six committee meetings a year in each county and to include an open forum for public comment.	Increases the maximum amount of damages allowed for public school retention agreements from \$3,500 to \$10,000.
SB2691 SD2 RELATING TO TEACHER EDUCATION	SB2690 SD1 RELATING TO THE UNIVERSITY OF HAWAII
Creates and funds a task force for local training of K-12 science, technology, engineering and mathematics educators, on Maui for Maui schools.	Appropriates funds to the University of Hawaii Maui College's Office of International and Regional Partnerships for study abroad tuition and travel expenses.
SB2693 SD1 RELATING TO INTERCOLLEGIATE ATHLETICS	SB2696 SD2 RELATING TO GREEN FEES
Allows college athletes the right to receive compensation for the use of their name, image, or likeness like other students.	Appropriates funds to the Office of Planning to study the feasibility of mandatory "green fees" to be paid by visitors, and to be used to support conservation and natural resource management.
SB2683 SD2 RELATING TO SEA LEVEL RISE	SB2682 SD2 RELATING TO THE ENVIRONMENTAL IMPACT STATEMENT LAW
Increases funding to the Hawaii Climate Change Mitigation and Adaptation Commission to further identify and address the impacts of sea level rise in our state.	Requires a supplemental environmental assessment after 15 years, but exempting renewable energy projects.
SB2671 SD2 RELATING TO REAL PROPERTY TRANSACTIONS	SB2694 SD2 RELATING TO THE LOW-INCOME HOUSING TAX CREDIT
Requires that mandatory seller disclosures in real estate transactions indicate if a property is within the sea level rise exposure area.	Encourages development of affordable housing units by increasing tax credit allocation and exempting certain low-income buildings from federal anti-passive-activity-loss rules.
SB2695 SD1 RELATING TO HOUSING	SB3142 SD1 RELATING TO THE ISSUANCE OF SPECIAL PURPOSE REVENUE BONDS TO ASSIST PULO DEVELOPMENT, LLC
Creates the housing incentive fund for the Hawaii Public Housing Authority and establishes a tax credit for contributors to the fund.	Provides funding for development of low- and moderate-income income housing, infrastructure, and alternative energy sources on certain Hawaiian Homestead lands in Waihihi, Maui.
SB2626 SD2 RELATING TO THE HAWAIIAN HOMES COMMISSION ACT	SB2668 SD2 RELATING TO THE LAND CONSERVATION FUND
Amends the Hawaiian Homes Commission Act that requires the Department of Land and Natural Resources to manage that explains of the lands to the state supplemental insurance program for properties vulnerable to climate change impacts, and methods.	Increases funding for operation and management for lands acquired by the Land Conservation Fund and increases the maximum conveyance tax amount that may be attributed to the fund.
SB2628 SD1 RELATING TO WATER	SB2692 SD1 RELATING TO THE NA WAI EHA WATERSHED
Specifies that the safety use to be beneficial use of water and requires the Department of Land and Natural Resources to work with the county governments of Hawaii Emergency Management Agency, and owners to use reservoir water for fire safety.	Appropriates money out of the land conservation fund to buy the Na Wai Eha watershed in Waiuku, Maui and requires Maui county to provide matching funds.
SB2697 SD1 RELATING TO TAXATION OF REAL ESTATE INVESTMENT TRUSTS	SB2687 SD2 RELATING TO TAXATION
Allows taxation of REITs by disallowing their dividends exemption, with the exception of investment trusts whose real property is exclusively used to provide affordable housing in Hawaii.	Increases the rental car surcharge tax from \$5 to \$8 for neighbor island counties for capacity-related highway projects in each county.
SB2672 RELATING TO CROSSWALKS	SB3143 SD2 RELATING TO PROCUREMENT
Requires vehicles driving in both directions of a roadway must stop for pedestrians in a crosswalk.	Requires the development of a ten-year pilot project to find innovative methods of procurement for increased efficiency and accountability.
SB2665 RELATING TO CHILD SUPPORT ENFORCEMENT	SB2677 RELATING TO SPECIAL IMMIGRANT JUVENILE STATUS
Establishes that every judgment for child support is enforceable until paid in full.	Specifies that the Family Court has jurisdiction over the custody or guardianship of an immigrant child if the child was abused, neglected, or abandoned before the age of 18.
SB3000 SD2 RELATING TO THE JUDICIARY	
Appropriates supplemental funds to the Judiciary for fiscal year 2020-2021.	

housing

SB3103 SD1 RELATING TO A SCHOOL FACILITIES AGENCY	SB3104 SD2 RELATING TO LAND DEVELOPMENT
Establishes a new agency for the purpose of planning, development, and construction of capital improvements for a public school facilities. Requires the Department of Education to allow students to simultaneously earn a high school diploma and an associate's degree.	Provides state land and infrastructure to subsidize the costs of housing development.
SB3235 SD1 RELATING TO HOUSING	SB2946 SD2 RELATING TO HOUSING
Establishes a new Homeownership Revolving Fund to provide loans to nonprofit housing development organizations and financial institutions for the development of affordable housing projects.	Establishes the ALOHA homes program to develop low-cost homes on state and county owned land in urban redevelopment sites to be sold as leasehold to qualified residents.
SB2616 SD2 RELATING TO AFFORDABLE HOUSING	SB2622 SD2 RELATING TO TAX CREDITS
Waives 50% of the mandatory school impact fees on development of new affordable housing units, accessory dwelling units, shared dwelling units, and any project developed by the Hawaii Public Housing Authority.	Increases the affordable care tax and the adjusted gross income eligibility cap for low income households entered based on the consumer price index.
SB2624 SD1 RELATING TO THE LOW-INCOME HOUSEHOLD RENTERS CREDIT	SB2279 SD1 RELATING TO AFFORDABLE HOUSING
Creates brackets of adjusted gross income for the purpose of awarding different amounts of credit to low-income renters, to be increased annually by a rise in the consumer price index.	Creates an opt-out system for acquisition of Front Street apartments by Hawaii Housing Finance and Development Corporation. Amends funding and extends approvals deadline for Leali'i mortgage housing project.
SB2852 SD2 RELATING TO THE HOUSING LOAN AND MORTGAGE PROGRAM	SB2853 SD2 RELATING TO THE HOUSING LOAN AND MORTGAGE PROGRAM
Increases the maximum allowable amount of Hula Mae Multifamily Revenue Bonds for continued financing of statewide affordable rental housing.	Increases the maximum allowable amount of Hula Mae Multifamily Revenue Bonds for continued financing of statewide affordable rental housing.

land, natural resources, and the environment

SB2620 SD1 RELATING TO LAND USE	SB3105 SD2 RELATING TO SUSTAINABLE DEVELOPMENT GOALS
Authorizes county land use authorities to amend district boundaries of areas larger up to 25 acres if the land will be rezoned to "urban" with at least 60% of the area dedicated to affordable housing.	Codifies into Hawaii state law the seventeen sustainable development goals of the United Nations.
SB2430 SD1 RELATING TO CLIMATE CHANGE MITIGATION AND ADAPTATION	SB3099 SD2 RELATING TO CLIMATE CHANGE
Requires the creation of a full-time "Climate Change Mitigation and Adaptation Coordinator" in the Department of Health.	Implements the recommendations of the Hawaii Sea Level Rise Vulnerability and Adaptation Report issued by the Maui Interdisciplinary and Adaptation Commission.
SB2606 SD2 RELATING TO COASTAL ZONE MANAGEMENT	SB2537 SD1 RELATING TO ACCESS TO PUBLIC PROPERTY
Makes further protections against sea level rise and coastal erosion. Requires the Climate Change Mitigation and Adaptation Commission to propose a state supplemental insurance program for properties vulnerable to climate change impacts.	Prohibits the obstruction of a public beach access and creates a fine for first-time offenders.
SB2628 SD1 RELATING TO INVASIVE PLANT SPECIES CONTROL	SB2730 SD1 RELATING TO 'ULU
Appropriates funds to the University of Hawaii College of Tropical Agriculture and Human Resources to develop or identify substitutes for invasive plant species that are routinely used in landscaping.	Approves funding for the research, development, marketing, and conservation of 'ulu.
	SB3038 SD2 RELATING TO TARO
	Excludes up to \$100,000 of income derived from taro production from the state income tax.

education and early learning

SB2615 SD2 RELATING TO CONSERVATION	SB2664 SD2 RELATING TO SCHOOL LUNCH REFORM
Appropriates funds for a "No Child Left Inside" program to ensure that children have adequate opportunity to enjoy outdoor education and recreation.	Increases the number of days by which students must apply for free/reduced lunch and replenish the student's meal fund. Appropriates funds to obtain a permit. Prohibits any "noise footprint" from a tour aircraft to extend into any occupied property.
SB2635 SD1 RELATING TO SCHOOLS	SB3086 SD2 RELATING TO INTERSCHOOL ATHLETIC ASSOCIATIONS
Appropriates funds to create, implement, and develop a Workforce Readiness Program within the DOE to allow students to simultaneously earn a high school diploma and an associate's degree.	Designates official interscholastic athletic associations for each county, and exempts the associations, including the Maui Interscholastic League, from conditions in applying for grants-in-aid. Appropriates funding to each designated county association through the Department of Education.
SB2436 SD1 RELATING TO EDUCATION DATA	SB2261 SD2 RELATING TO TAXATION
Requires the Department of Education to establish a standardized data collection and analysis process to study student behavior, student achievement, and school climate.	Provides an off-the-top income tax exclusion of \$30,000 for eligible devices teachers, including full-time school librarians, special education teachers, and school counselors.
SB2085 SD1 RELATING TO BEHAVIOR ANALYSIS	SB2488 SD2 RELATING TO TEACHER COMPENSATION
Appropriates funds to the Department of Education to provide public school and public charter school students with behavior analysis services, strengthening presumptions for visitation or unsupervised contact against a parent who has a felony conviction for violence or sexual abuse of a minor.	Appropriates funds for various teacher compensation incentives to help address labor shortages, including teachers in special education, hard-to-staff geographic locations, and Hawaiian language immersion programs.
SB2057 SD1 RELATING TO EDUCATION	SB2256 SD2 RELATING TO TEACHER RECRUITMENT
Encourages career and technical education program enrollment by removing the residential requirement for students who may not reside in a school's particular service area.	Allows the Department of Education and the State Public Charter School Commission to provide incentives to improve teacher recruitment and retention.
SB2052 SD2 RELATING TO LOAN FORGIVENESS FOR EARLY CHILDHOOD EDUCATION PROFESSIONALS	SB3014 SD2 RELATING TO ON-SITE EARLY CHILDHOOD FACILITIES
Allows education loan forgiveness for early childhood education teachers after five years of teaching.	Establishes an income tax credit for employers who create onsite early childhood facilities to assist working parents.
SB2291 SD1 RELATING TO TAXATION	SB3005 RELATING TO THE UNIVERSITY OF HAWAII
Establishes a refundable tax credit for eligible childcare expenses.	Repeals the sunset date in Act 39 (2017), which established the Innovation and Commercialization Initiative Program at the University of Hawaii.

health

SB75 SD2 RELATING TO APPROPRIATIONS	SB2224 SD2 RELATING TO HEALTH
Makes appropriations for public health response to the outbreak of the COVID-19 coronavirus.	Authorizes issuance of state bonds to fund parking improvements at Maui Memorial Medical Center. Prohibits any "noise footprint" from a tour aircraft to extend into any occupied property.
SB2340 SD2 RELATING TO ALZHEIMER'S DISEASE	SB2085 SD1 RELATING TO RURAL HEALTH CARE PROVIDER CARE PROGRAM
Creates an outreach program under the Department of Health to promote understanding among medical practitioners of Medicare coverage of comprehensive care planning services for Alzheimer's disease patients.	Appropriates funds for the rural health care provider loan repayment program.
SB2335 SD1 RELATING TO THE HEALTHY AGING PARTNERSHIP PROGRAM	SB2542 SD2 RELATING TO THE GENERAL EXCISE TAX EXEMPTIONS
Adds substantial funding to this successful state program targeted at older adults that promotes better self-management of medical conditions and also encourages fitness activities.	Exempts physicians and advance practice registered nurses from collecting and paying general excise tax for the sale of their services when acting as a primary care provider.
SB2276 SD1 RELATING TO PRESCRIPTION DRUGS	SB2429 SD2 RELATING TO HEALTH
Would require drug manufacturers to notify the insurance commission, prescription drug benefit plans, and pharmacy benefit managers of a proposed increase in the price of certain drugs. Requires the insurance commissioner to post the price information on the Department of Commerce and Consumer Affairs website. Imposes fines.	Extends the state-funded medical assistance provided to pregnant women for up to one year post-pregnancy in certain circumstances.
SB2535 SD1 RELATING TO THE YOUTH VAPING EPIDEMIC	SB2903 SD2 RELATING TO FLAVORED TOBACCO PRODUCTS
Bans the sale of flavored tobacco products and requires labeling of e-liquids containing nicotine. Authorizes a court to require 18 to 21-year-olds convicted of possession of a tobacco product or e-cigarette to complete a tobacco education and cessation program or community service in lieu of a fine. Also requires a parent or guardian of a minor to choose the penalty for a minor convicted of tobacco offenses.	Bans the sale of flavored tobacco products.

courts and the administration of justice

SB2117 SD1 RELATING TO DISTRICT COURT JUDGES	SB2109 SD1 RELATING TO CHILDREN
Establishes one additional state district court judge position on Maui.	Requires that courts and prosecutors minimize the amount of time that minors who are alleged victims of or witnesses to criminal acts must spend in proceedings. The measure also requires prioritizing trials for abuse or sexual offenses to promote more timely judicial outcomes.
SB2305 SD1 RELATING TO DOMESTIC ABUSE	SB2308 SD2 RELATING TO THE SEXUAL EXPLOITATION OF CHILDREN
Promotes speedy hearings in cases of extending domestic abuse TROs by allowing requests for continuances without good cause.	Creates a statewide coordinator position and statewide steering committee to oversee the implementation of a statewide coordinated response to sexually exploited minors. Also establishes multidisciplinary teams in each county to immediately respond to relevant cases.
SB2603 SD1 RELATING TO FAMILY COURTS	
Aims to protect minors from possible abuse by a divorced parent by strengthening presumptions for visitation or unsupervised contact against a parent who has a felony conviction for violence or sexual abuse of a minor.	
SB2308 SD1 RELATING TO REPORTS OF CHILD ABUSE	
Grants immunity from civil and criminal liability for individuals who provide information or assistance in child abuse investigations.	

crime prevention and control

SB2187 SD1 RELATING TO SEX TRAFFICKING	SB2242 SD1 RELATING TO THEFT
Clarifies that coercive means used to advance prostitution constitute criminal sex trafficking, a class A felony.	Creates new felony crime specific to theft of catalytic converters, including presenting to a scrap dealer a catalytic converter from which catalyst metals have been removed.
SB2054 SD2 RELATING TO FIREARM REGISTRATION	SB2519 SD2 RELATING TO FIREARMS
Requires the registration of firearms that are moved out of the State and imposes a fine of \$250 per firearm for violations.	Prohibits the manufacture, possession, sale, barter, trade, gift, transfer, or acquisition of detachable ammunition magazines with a capacity of more than ten rounds. Does not apply to magazines legally possessed prior, including inherited magazines.
SB3054 SD1 RELATING TO FIREARMS AMMUNITION	SB2531 SD2 RELATING TO HEALTH
Regulates ammunition or shell casings in the same manner as firearms, prohibiting sale unless the seller is licensed and the purchaser is the registered owner of the firearm. Authorizes registered owners to designate a person for the purpose of purchasing ammunition.	Seeks to deter exploitation of seniors by creating a class A felony for anyone who intentionally or knowingly misuses or takes personal assets of a vulnerable person or misuses a power of attorney or other privileges granted by the vulnerable adult.
SB2354 SD1 RELATING TO DECEPTIVE PRACTICES	
Prohibits a person from falsely advertising or conducting a live musical performance through deceptive affiliation with a performer.	

other notable bills

SB2260 RELATING TO CIVIL IDENTIFICATION CARDS	SB2008 SD1 RELATING TO VOTING
Repeals the minimum age requirement to obtain a civil identification card.	Creates an opt-out system that automatically registers eligible persons to vote when applying for a new, renewed, or duplicate driver's license or instruction permit.
SB2794 SD1 RELATING TO ELECTIONS	SB2137 SD2 RELATING TO ELECTIONS
Makes clarifying amendments to election statutes to more effectively implement "vote by mail" operations. Requires additional voter service centers.	Authorizes election officials to establish additional voter service centers.
SB2876 SD1 RELATING TO THE HAWAII EMPLOYER-UNION HEALTH BENEFITS TRUST FUND EMPLOYEE-BENEFICIARY MONTHLY CONTRIBUTIONS	SB2836 SD1 RELATING TO THE ACCESS HAWAII COMMITTEE
Requires newly retired employees to pay their share of health benefits premiums through monthly electronic deductions from their employees' Retirement System account or their financial institution.	Gives agencies more flexibility and online options to provide enhanced digital services to the public in order to better serve the public and business.
SB2940 SD2 RELATING TO THE STADIUM DEVELOPMENT DISTRICT	SB2649 SD1 RELATING TO TOUR AIRCRAFT
Establishes a stadium development special fund. Establishes development guidance policies for the Stadium Authority's actions in the Stadium Development District. Authorizes the Stadium Authority of Leeward Maui to acquire land. Transfers authority to issue leases of the lands to the Stadium Authority.	Requires all tour aircraft to be fitted with certain FAA-approved safety equipment to extend into any occupied property.
SB2086 SD1 RELATING TO STATE HOLIDAYS	SB3164 SD2 RELATING TO THE STATE SURFING COMMISSION
Reestablishes Lu Kū'ō'ō, Hawaiian Recognition Day, as an official state holiday.	Creates a State Surfing Commission within the Hawaii Tourism Authority to promote, foster and encourage understanding of the history, culture, and importance of surfing in Hawaii.

MAKE YOURSELF HEARD!

Participating in the legislative process is easier than ever for neighbor island residents who are unable to visit us at the Capitol. The state legislature's website at www.capitol.hawaii.gov is the place to start. There you can search for measures that are being considered this session based on keywords, the name of a House or Senate member who introduced a measure, or by subject matter committee. When you register for an account using your e-mail address, you can create a clear personalized tracking list for accessing daily updated information to find out when a measure may be scheduled for hearing, and you can electronically submit public testimony for consideration by the committee conducting the hearing. If you have general questions concerning the legislative process and how a bill becomes law, please also see the website for the Public Access Room at www.lrbhawaii.org/par/ or call them toll-free from Maui at 984-2400. You can reach our office toll-free through that number as well, or you can contact or e-mail us as provided below. Mahalo for participating in our democratic process!

OFFICE OF SENATOR GILBERT S.C. KEITH-AGARAN

HAWAII STATE CAPITOL ROOM 221
 phone: (808) 586-7344
 fax: (808) 586-7348
 email: senkeithagaran@capitol.hawaii.gov
www.capitol.hawaii.gov

