



2012 Legislative Update

District 11 - Makiki/Tantalus • Punchbowl • Ala Moana-Sheridan • McCully

May 2012



Dear Neighbors,

With a post-APEC boost in visitor arrivals impacting the year's tax revenues, the 2012 Legislature was able to expand resources for schools, health care and 'safety net' programs. In the following pages, we provide highlights of our actions and notable legislation.

We also adopted several measures that will assist condo residents: first, in coping with increased electricity costs – **Act 18, SLH 2012 (HB 1746)** applies the requirement for separate utility metering of residential condo units to all condominiums irrespective of when they were built. Second, **HB 2328** extends the exemption from taxation of capital gains realized from sales of leased fee interests in condo units for another 5 years (until January 2018) – thereby helping encourage leasehold conversions. Over 7,000 Makiki-Punchbowl condo lessees are facing expiring leaseholds within the next decade.

I look forward to discussing reapportionment changes and other community concerns with you in the weeks ahead. Thank you for the privilege of serving as your State Senator.

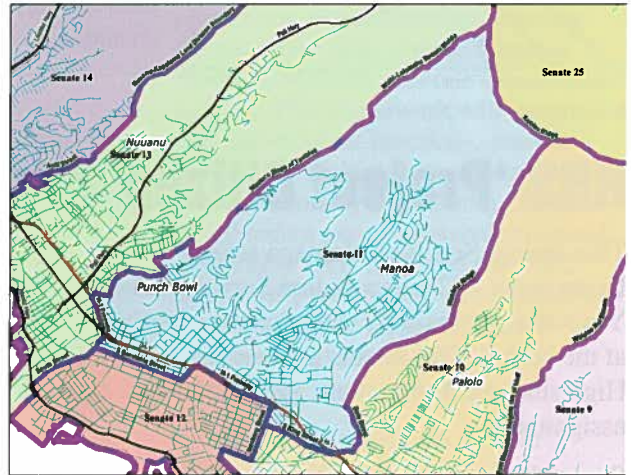
Mahalo,

Senator Carol Fukunaga
District 11 (Makiki/Punchbowl, Tantalus,
Ala Moana-McCully)

Update on Reapportionment

The March 2012 Reapportionment Plan adopted by the State Reapportionment Commission excludes roughly 108,000 'non-permanent residents' – nonresident military members and their dependents, and out-of-state students – from the census count used to redraw state political boundaries every ten years. In doing so, the State Reapportionment Commission reduced the number of State Senate seats on Oahu from 18 to 17, while increasing the number of seats on the Big Island from 3 to 4.

The new Senate District 11 combines Manoa's single-family residential community with Makiki and Punchbowl's condo/multi-family neighborhoods. It will include all of Manoa (current House District 24), a small portion of Moi'ilili, all of Makiki-Tantalus (current House District 25), portions of Punchbowl/Papakolea. The district will no longer include Ala Moana-Sheridan, Kaheka and McCully.



Congratulations to Hawaii State Middle School Chess Team Champions

The WMS Chess team captured the **2012 Hawaii State Middle School Chess Team Championship** in March and represented Hawaii in the National Jr. High Chess Championships in San Diego, California. Wun-Shen Chen, from WMS, was named the **2012 National K-9 Unrated Chess Co-Champion**, while the Washington Middle School Team placed **3rd in the nation**.



Congratulations to Washington Middle School students for being excellent representatives of the State of Hawaii!

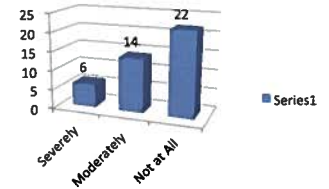
District 11 Community Survey Results

In February, my newsletter "Neighbor to Neighbor" was sent to residents within my district. Here's a sampling of our results; check www.carolfukunaga.com for more information:

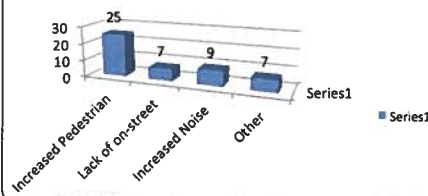
Lunalilo On-Ramp Closure Impacts

Since 2006, the Lunalilo On-ramp has been closed during morning rush hours. Our survey results indicate that 47% of respondents have been impacted by the closure.

The closure of the Lunalilo on-ramp during rush hour affects my driving:



The increased traffic in my community concerns me because of:



Traffic

Over 50% of respondents identified concerns with pedestrian hazards in the neighborhood due to increased vehicular traffic. According to AARP, urban Honolulu has a high level of auto accidents in Honolulu. Department of Health reported seven crashes between 2002-2011 at the Piikoi-S. Beretainia Streets intersection, with five crashes near Don Quijote's at Kanunu-Kaheka Streets intersection.

RHS 'Project Citizen' Class Tackles Pedestrian Safety

This spring, Senator Fukunaga asked City Department of Transportation Services Director Yoshioka and his staff to evaluate pedestrian safety at the Nehoa-Clio Streets intersection with Roosevelt High students during their 'Project Citizen' class assignment.

Students pointed out that many students had either experienced accidents or near-misses while crossing in the intersection; a survey of roughly 500 social studies students showed that over 70% of the students agreed that the intersection was unsafe.

To increase awareness of the safety hazards, Roosevelt High School students partnered with Honolulu Police Department officers, Farmer's Insurance Company and Stevenson Middle School students to promote safe driving and pedestrian safety in front of their schools. The students from Social Studies teacher Kawakami's class stood and waved signs at the Nehoa-Clio Streets intersection in early May.

The following week, Roosevelt High School students presented their recommendations (examples: pedestrian-activated lights illuminating the crosswalk, additional lighting above the crosswalk) to improve pedestrian safety near the school. This summer, area legislators and Roosevelt High stakeholders will work with Honolulu Police Department and other community partners to organize next school year's events to promote safety. If you are interested in joining with their efforts, please contact Roosevelt High teacher Soozie Kawakami at roughrider09sk@gmail.com or 531-9597.



Hawaii State Senate Sets Economic Recovery as its Priority

Job Creation and a Sustainable Economy

Although Hawaii's economy is on its way to recovery with strong growth in the visitor industry, many people are still unemployed or under-employed in construction and trades. The State Senate therefore made job creation and a sustainable economy its top priority through the "Invest in Hawaii Act of 2012" (*SB 2012*). The Senate succeeded in appropriating \$414 million dollars for R&M projects in this year's Executive supplemental budget (*HB 2012, HD1, SD1, CD1*). This higher-than-usual funding will provide more than 4,000 shovel-ready jobs for all construction trades and circulate more dollars locally.

The Department of Education benefited from \$296 million in CIP appropriations, including \$116 million for classroom renovations and school building improvements to address the department's R&M backlog, \$10 million for electrical upgrades to support evolving technology, and \$30 million in various lump sum amounts to address ADA compliance, health/safety and special education needs.

A strategic investment of \$2 million annually for the next three years will help Hawaii Tourism Authority develop new initiatives to significantly increase Asia-Pacific travel and tourism by capitalizing on President Obama's directive to ease access for international travelers (*SB 490*). The expanded visa programs will help support an estimated 154,000 jobs in Hawaii.

The Senate also supported the emerging market for space tourism, which could grow into a billion-dollar global industry with new aerospace jobs, and renewed economic development in the Kalaheo region (*SB 112*). The bill appropriates funds for an EIS to support the State's application for a spaceport

license from the Federal Aviation Administration.

Children and Families

As a result of the past four years of budget cuts, the health care/social services "safety net" has been severely strained. The supplemental budget provided additional support for child welfare, domestic violence shelters, Med-Quest, and other Department of Human Services shortfalls.

With the growing demands upon health care providers, funds were provided to the St. Francis Healthcare System of Hawaii (formerly known as Hawaii Medical Center-East) to improve its facilities and services in the interest of the health, safety, and wellbeing of residents (*SB 2939*), and to assist other hospitals address some of the overflow from HMC-West (*HB 304*).

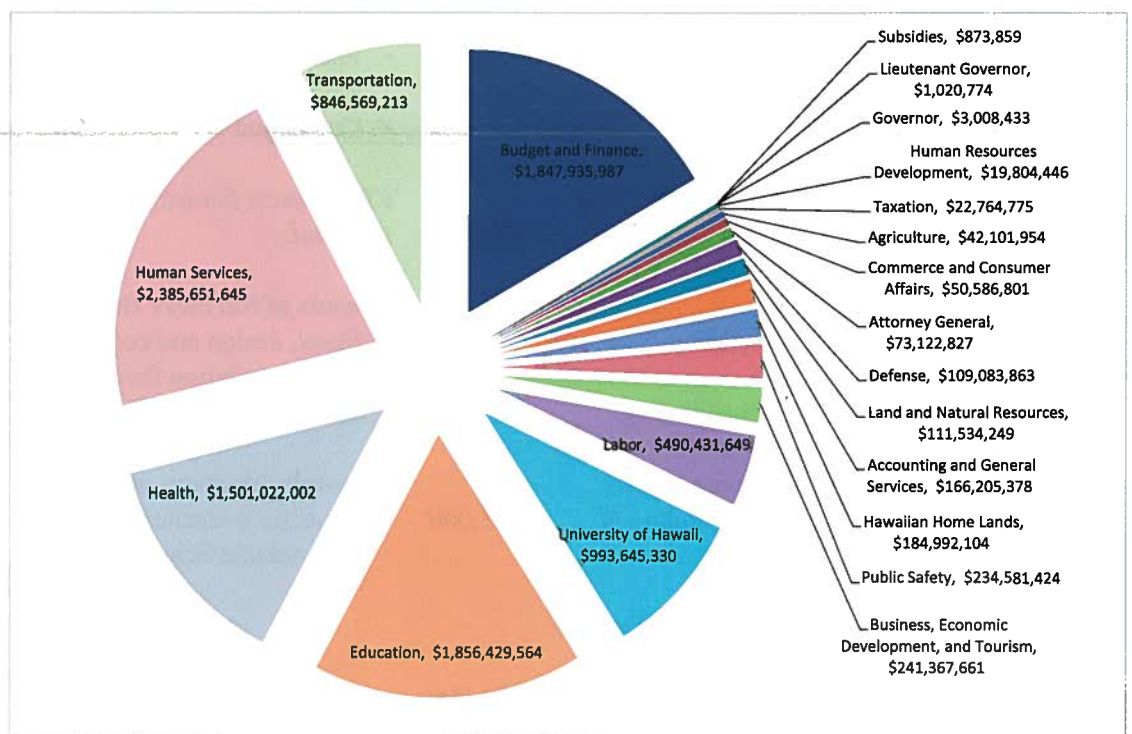
Re-engineering Government Operations and Improving Data Security

To improve the quality of government services through greater transparency and faster services, the Senate endorsed CIO "Sonny" Bhagowalia's proposed investments of \$10.3 million in information technology (IT) triage projects, business process re-engineering and demonstration projects, and IT

integration pilot projects. Examples of potential demonstration pilot projects include allowing residents or businesses to pay taxes electronically (without paying a "convenience fee"), a web-based dashboard project to speed contracts/payment processing for health/human services providers, and electronic posting of public information and reports.

The supplemental budget also included \$15 million in Phase 1 enterprise resource planning (ERP) funds requested to retool the state's tax collections, expenditures processing/procurement, budgeting and human resources systems into one consolidated system. This framework will streamline core government functions, share key data across multiple departments and save time/money by reducing the level of redundant paper-intensive processes (*HB 2012*), *HB 1788* and *HB 2295* collectively strengthen enforcement penalties against computer fraud/unauthorized access, and cyber-harassment.

For more information on notable 2012 legislation, please visit www.carolfukunaga.com and the State Senate's EDT Committee website (<http://www.capitol.hawaii.gov/committeepage.aspx?comm=EDT>).



Save the date

**McCully-Moiliili
Town Meeting**

Thursday • 6/14/12
Washington Middle School • 5:30 pm

(talk story with area legislators about recent-
concluded legislative session, reapportion-
ment highlights)

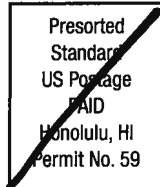
**Makiki-Punchbowl
Briefing on Lunalilo
On-ramp Restriping**

Tuesday • 6/12/12
Stevenson Middle School • 5:30 pm

(with guest speakers from Department of
transportation and area legislators)



Senator Carol Fukunaga
State Capitol, Room 216
Honolulu, HI 96813



Capital Improvements in Supplemental Budget (HB 2012, CD1)

The following Repair and Maintenance (R&M) projects and Capital Improvements projects (CIP) for FY 2013 were appropriated for schools and other projects in Senate District 11 in **HB 2012, CD1** (Executive Supplemental Budget).

Kaahumanu Elementary

- Converged network infrastructure \$115,000

Lincoln Elementary

- Campus drainage improvements and replacement of water lines in Buildings A, B and D..... \$388,000

Lunalilo Elementary

- Re-roofing and re-coating of Building A, re-roofing of Building D, replacement of split AC units and installation of ceiling fans in Buildings A, B and C..... \$280,000
- Converged network infrastructure..... \$115,000

Roosevelt High School

- Plans/design for a campus-wide Master Plan (additional parking) \$250,000
- Design for a campus-wide ADA accommodations plan \$200,000
- Phase I Fire Protection (fire hydrants system)..... \$457,000
- Gym repair and recoating of Building B, walkway resurfacing restoration of Building A bell tower, re-roofing, locker room repairs and repainting, refurbishing of Building N \$625,000

Stevenson Middle School

- Re-roofing of Building F, replacing Building E AC units, repair of gang toilets and tennis court improvements \$700,000
- Converged network infrastructure \$575,000

Washington Middle School

- Design, construction/equipment to convert Building H classroom into a science laboratory (STEM lab)..... \$475,000
- Design, construction/equipment to renovate Building C computer classroom into a digital media studio..... \$195,000
- Renovation of Building C health room, renovation and modification of ADA stalls, replacement of AC units in A-104 and P-1, renovation of Building B second floor restrooms \$430,000
- Phase 2 of sink cabinet replacement and renovation of the boys/girls locker rooms \$133,000
- Converged network infrastructure \$345,000

CIP projects funded for programs servicing the community included:

Friends of Shriners Hospital

- Plans, design and construction to complete family visitation facilities at Shriners Hospital for Children..... \$1,500,000

Honolulu Museum of Arts

- Plans for a teacher resource art center adjacent to Linekona School..... \$120,000