



Hawaii State Representative Adrian K. Tam

House District 24



NEWSLETTER

Aloha neighbors,

MAY 2025

The 2025 Legislative session adjourned for Sine Die on May 2, 2025. As we reflect on the end of this year's law making session, I want to express my gratitude for your support and thank each one of you for your continued engagement throughout the session. With summer just around the corner, I hope you find the time to relax, recharge, and share memories with your 'ohana. Please lookout for our 2025 legislative recap in our June newsletter and mahalo for being a part of this journey.

BE PREPARED!

Hawaii's Hurricane season is coming! (June 1 - November 30)

BEFORE

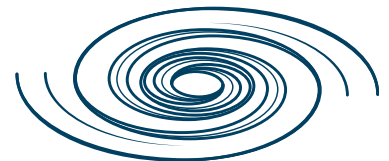
- **Board up windows.** Tape DOES NOT prevent windows from breaking.
- **Trim trees & shrubs** around your home & secure outdoor furniture & loose objects.
- **Clear rain gutters & downspouts.**
- **Turn off utilities if instructed to do so.** Turn the refrigerator thermostat to its coldest setting and keep its doors closed.
- **Avoid using the phone,** except for serious emergencies. Consider texting.
- **Ensure a supply of water** for sanitary purposes.
- **Prepare to evacuate** when directed to by local authorities. You will need to take your kit* with you, shelters do not provide any supplies, food, or water.

DURING

- **Stay indoors** away from windows, skylights and glass doors.
- **Secure & brace exterior doors.**
- **Close interior doors & take refuge in a small interior safe room,** like a closet or hallway, on the lowest level of your home.
- The eye of the hurricane is deceptively calm and almost free of clouds with light winds and warm temperatures. **Do not go outdoors while the eye is passing;** the full intensity of the storm will reoccur in minutes.
- **Monitor your NOAA Weather Radio & local radio stations** for emergency information/updates.

AFTER

- **Continuously monitor TV** (if working) & radio for instructions.
- Authorities will announce when it is safe to go outside and/or to return to your home.
- When assessing damage, take photos to document for insurance purposes.
- **Be aware of hazards,** i.e. down power lines, broken gas lines, contaminated water, weakened structures, broken glass, etc.



For More Information please visit:
<https://www.honolulu.gov/site-dem-site/articles/35734-hurricane.html>

REP TAM AT WORK



The 'Iolani Raiders were recognized by the House of Representatives for achieving first place at the 2025 Hawaii LifeSmarts State Competition.



Rep. Tam with app developer Sean Feeney at the Hawaii Tech Day event. held at the Capitol.



Ala Wai Elementary School



March 23, 2025

The Ala Wai third grade class made a visit to the Hawai'i State Capitol. They met with Senator Sharon Moriwiki and myself, toured the Senate and House of Representatives chambers, were briefed about the legislative process at the Public Access Room, took a lunch break on the Executive Level and were introduced on the House floor. I felt hope and confidence for the future when I saw our keiki asking questions and learning about Hawaii's legislature and Capitol.



ART AT THE CAPITOL

April 11, 2025

People gathered for the 16th Annual Art at the Capitol with the theme "Kālena: The Talent of Hawai'i." The event was hosted by the Hawai'i State Foundation on Culture and the Arts and Rep. Jeanné Kapela. The celebration featured local artists, short films, poetry, music, dance, live art, taiko, a tea ceremony, self guided tours of our legislative offices and more.



March 31, 2025

Hundreds of people gathered at the State Capitol and Capitol Modern in unity for Transgender Day of Visibility. Representation matters, and when people are authentic it helps others to find the courage to be their own authentic selves. There's no community without the "T" and let's continue to band together in solidarity.



13th ANNUAL LEI PROGRAM

April 14, 2025

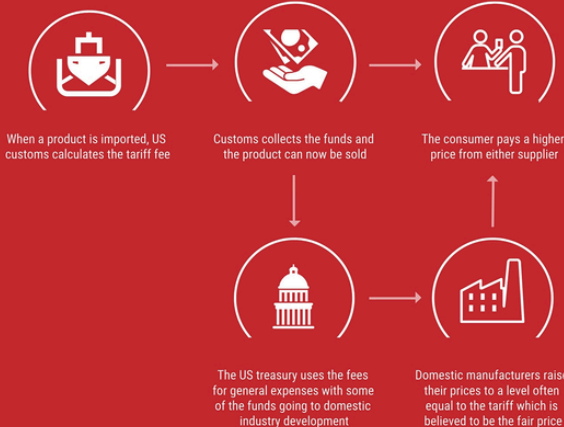
I had the honor to speak at the 13th Annual LEI program which kicked-off at the Hawai'i Convention Center with about 700 students in attendance. Organized by the Hawai'i Tourism Authority and ClimbHI, the LEI (Leadership, Exploration and Inspiration) program was held across the state to provide High School and college students an opportunity to learn about Hawai'i's visitor industry. The goal is to spark an interest with a career in hospitality whether it be through entertainment, culinary arts, small business enterprise or the many other jobs available in our evolving tourism industry. What makes Hawai'i special beyond its beauty is our kama'aina. Let's keep future generations home with meaningful jobs where they can steward the future of tourism.



IMPORT TARIFFS 101

WHY THE PRICE OF DOMESTIC GOODS INCREASES

How Tariffs Work



TARIFF INCREASE WATCH

How tariffs work: When goods are imported into the U.S., a tariff fee is charged by U.S. Customs. This fee is paid by the importer, leading to higher prices for consumers in many cases. The money collected from tariffs will go to the U.S. Treasury and is used for general government spending.

Amid the uncertainty about tariffs some retailers are now showing the impact by itemizing the costs on their invoice. This example shown was from a recent order for athletic wear.

ORDER SUMMARY

TARIFFS:	\$11.25
SUBTOTAL:	\$180.00
MEMBER TOKEN(S):	3
TAX:	\$9.00
TOTAL:	\$20.40

ADVISORIES WAIKIKI ROAD CLOSURES



May 3, 2025 Saturday
6:00 AM Road Closes
12:00 AM Road Reopens



45th ANNUAL VISITOR INDUSTRY CHARITY WALK The event will have 5,000 + runners/walkers. It will start at Ala Moana Park's Magic Island, exit to Ala Moana Blvd. at Atkinson Dr., mauka sidewalk area, to Ala Wai Promenade area, to Kalakaua Ave., makai side, crossover to mauka side sidewalk at King Kalakaua Park, to cross to makai side at Paoakalani Ave., to Kalakaua Ave. makai side ewa bound direction, to Lewers St., to to Kalia Rd., to Ala Moana Blvd., to end at Ala Moana Park's Magic Island.

May 17, 2025 Saturday
2:00 PM Road Closes
12:00 AM Road Reopens

HAWAII LIFE FESTIVAL The event is expected to have 10,000+ participants. The event will close Kalakaua Avenue., all lanes and sidewalk areas from Seaside Ave. to Uluniu Ave. Lane closures start at 12:30 pm for set up

May 25, 2025 Sunday
3:00 AM Lanes Close
9:00 AM Lanes Reopen

HIBISCUS HALF MARATHON The event is expected to have 900 runners. It will start at Kapiolani Park, to Kalakaua Ave., to Monsarrat Ave., to Paki Ave., to Diamond Hd. Rd., to 18th Ave., to Kilauea Ave., to Waialae Ave., to Kalaniana'ole Hwy., to Kealaolu Ave., to Kahala Ave., to Diamond Hd. Rd., to Kalakaua Ave., to end at Honolulu Marathon Finish line.

May 31, 2025 Saturday
2:00 PM Road Closes
12:00 AM Road Reopens

LEAHI FESTIVAL The event is expected to have 10,000+ participants. The event will close Kalakaua Avenue., all lanes and sidewalk areas from Seaside Ave. to Uluniu Ave. Lane closures start at 12:30 pm for set up.

FIGHT MEASLES It starts with you



Measles causes rash and fever. It is easy to spread and can cause serious illness, especially in young children. People who are not protected can get measles by going into a room where a person with measles has been, even up to 2 hours after that person has left.



Stay home if you are sick

Measles is very easy to spread. Stay home and away from other people in the house. Do not go to school, work, or travel until 5 days after the rash appears.



Wash your hands

Wash your hands thoroughly and often with soap and warm water.



Get Vaccinated

The measles-mumps-rubella (MMR) vaccine provides the best protection against this disease.



Cover your cough or sneeze

Cover your mouth and nose with your sleeve or a tissue when you cough or sneeze. Toss your used tissues in the waste basket and wash your hands.



Been in contact with someone who has Measles?

Call your doctor right away

Vaccine or a medicine called immune globulin given soon after contact may provide some protection against measles.

Symptoms of MEASLES infection

- High Fever
- Cough
- Runny nose
- Red, watery eyes
- Rash

Wear a Mask upon entering Healthcare Facility



For more information visit:
health.hawaii.gov/docd/disease_listing/measles/

Disease

Transmission:

AIRBORNE



CONDO CORNER



Condominium Owners' Rights and Responsibilities

When you purchase a condominium unit, you automatically become a member of an association of unit owners. With condo ownership comes certain rights and responsibilities.

For example, you have the right to a competent and responsive association that spends prudently, budgets properly, and maintains adequate reserve funding and a board that meets its fiduciary responsibility toward the association.

For instance, you have the responsibility to understand and comply with your association's declaration, bylaws, and house rules and you are also responsible for making sure your guests follow these rules.

To learn more about your rights and responsibilities, check out the Real Estate Branch's short video at <https://youtu.be/Xe5xnrl1JvY> and brochure at <https://cca.hawaii.gov/reb/files/2016/05/Owners-Rights-and-Responsibilities-May-2016.pdf>

Contact us



(808) 586-8520



reptam@capitol.hawaii.gov



415 S. Beretania Street, Rm. 402
Honolulu, Hawaii 96813



@repadriantam