

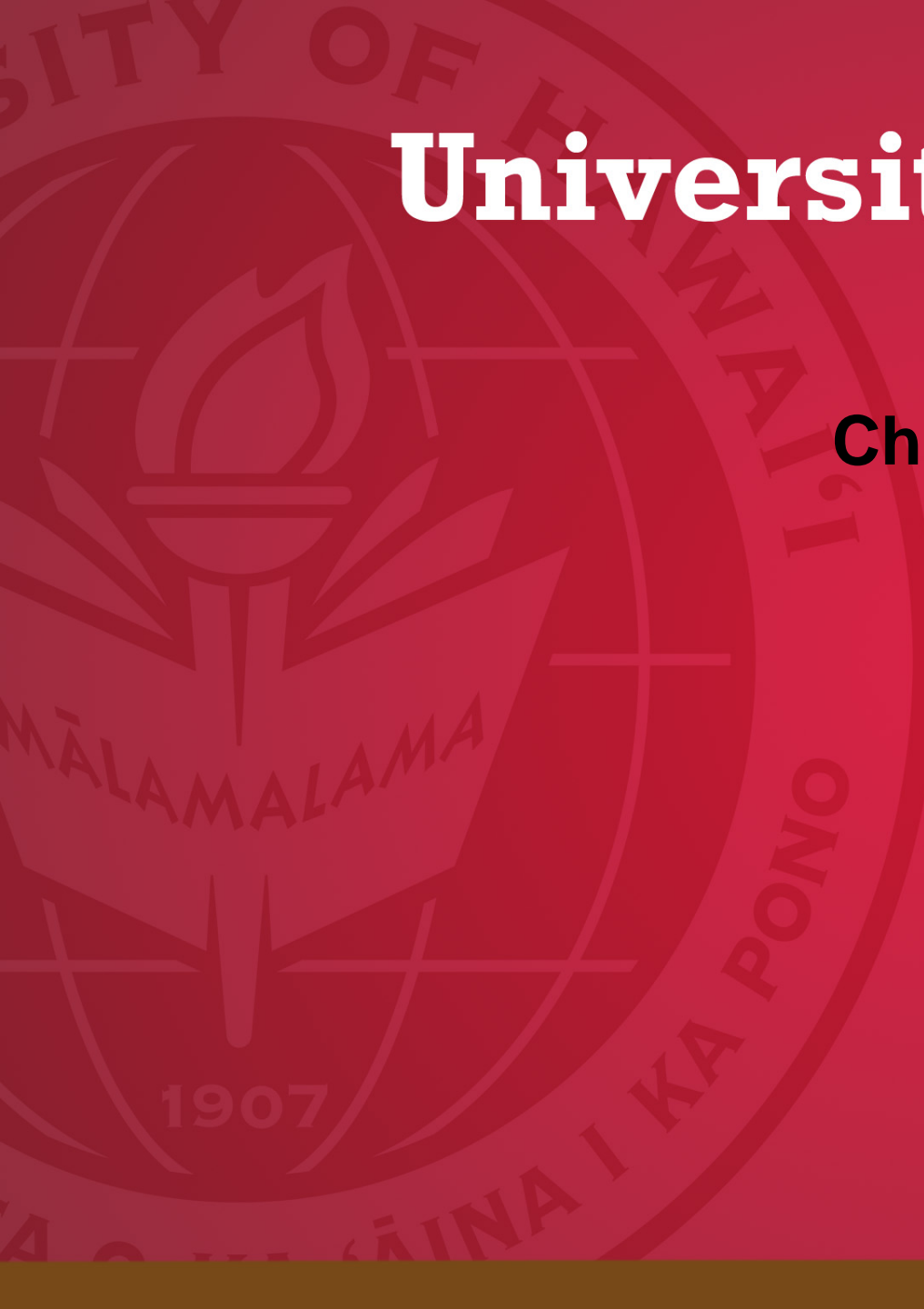
# University of Hawai'i West O'ahu

**Chancellor Gene Awakuni**

University of Hawai'i West O'ahu

Kapolei Town Hall Meeting

September, 21 2011



# UH West O'ahu Profile

**FOUNDED** 1976 as West O'ahu College

**CURRENT ENROLLMENT** About 1,700 on-campus and distance learning

**STUDENT-TO-FACULTY RATIO** 15 to 1

**DEGREES** 23 Bachelor Degree Programs  
4 Certificate Programs

**DEMOGRAPHICS** 17 - 81 years old

**DISTANCE LEARNERS LOCATED ON NEIGHBOR ISLANDS** 20%

# UH WEST O'AHU CORE VALUES

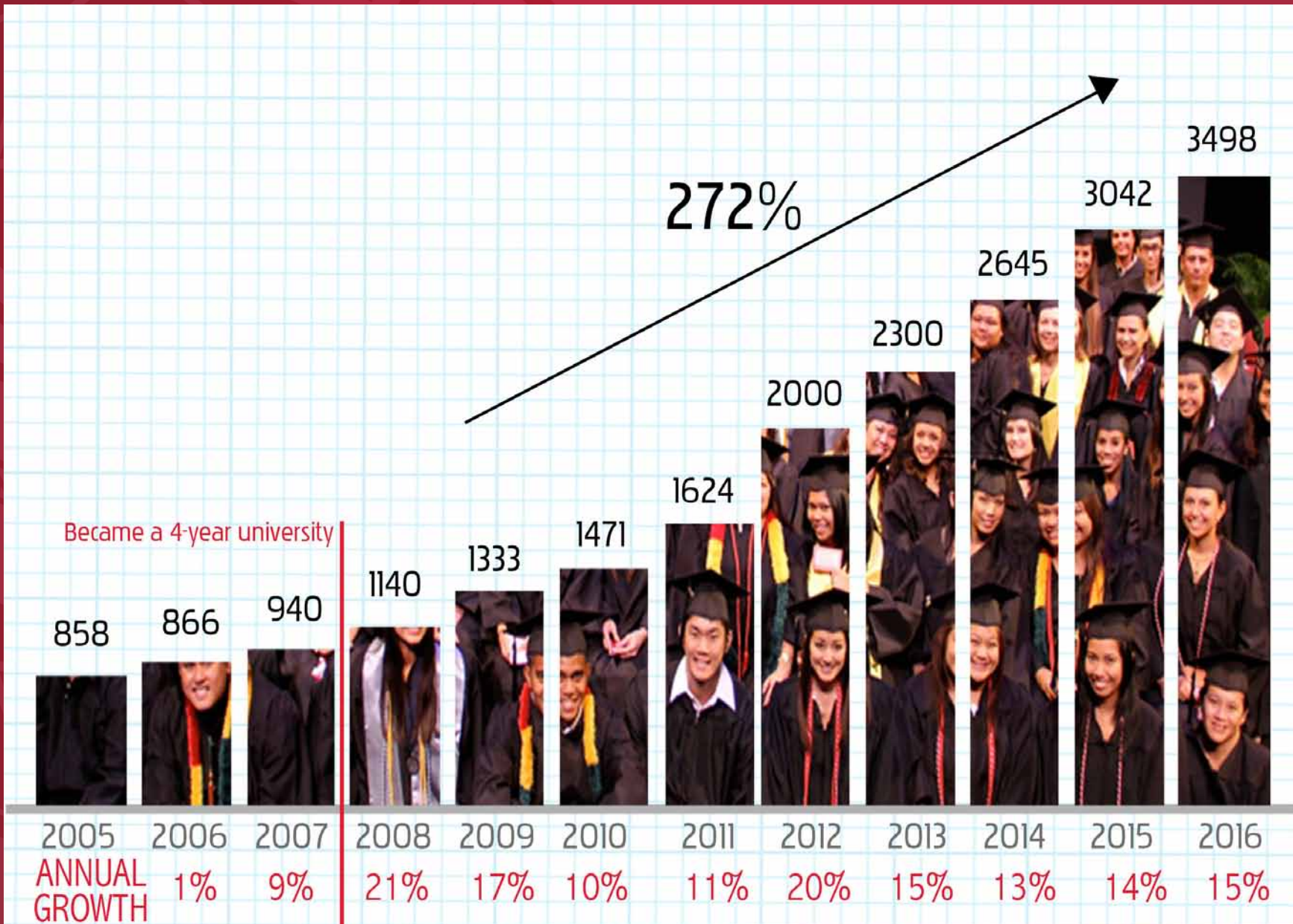
- EXCELLENCE AS A STATE OF MIND AND WAY OF BEING
- ENTREPRENEURIAL, INNOVATIVE AND NIMBLE
- FOCUS ON PROJECT-BASED/APPLIED LEARNING
- CREATE OPPORTUNITIES FOR INTERDISCIPLINARY PURSUITS
- PROMOTE SOCIAL RESPONSIBILITY

# OPPORTUNITIES

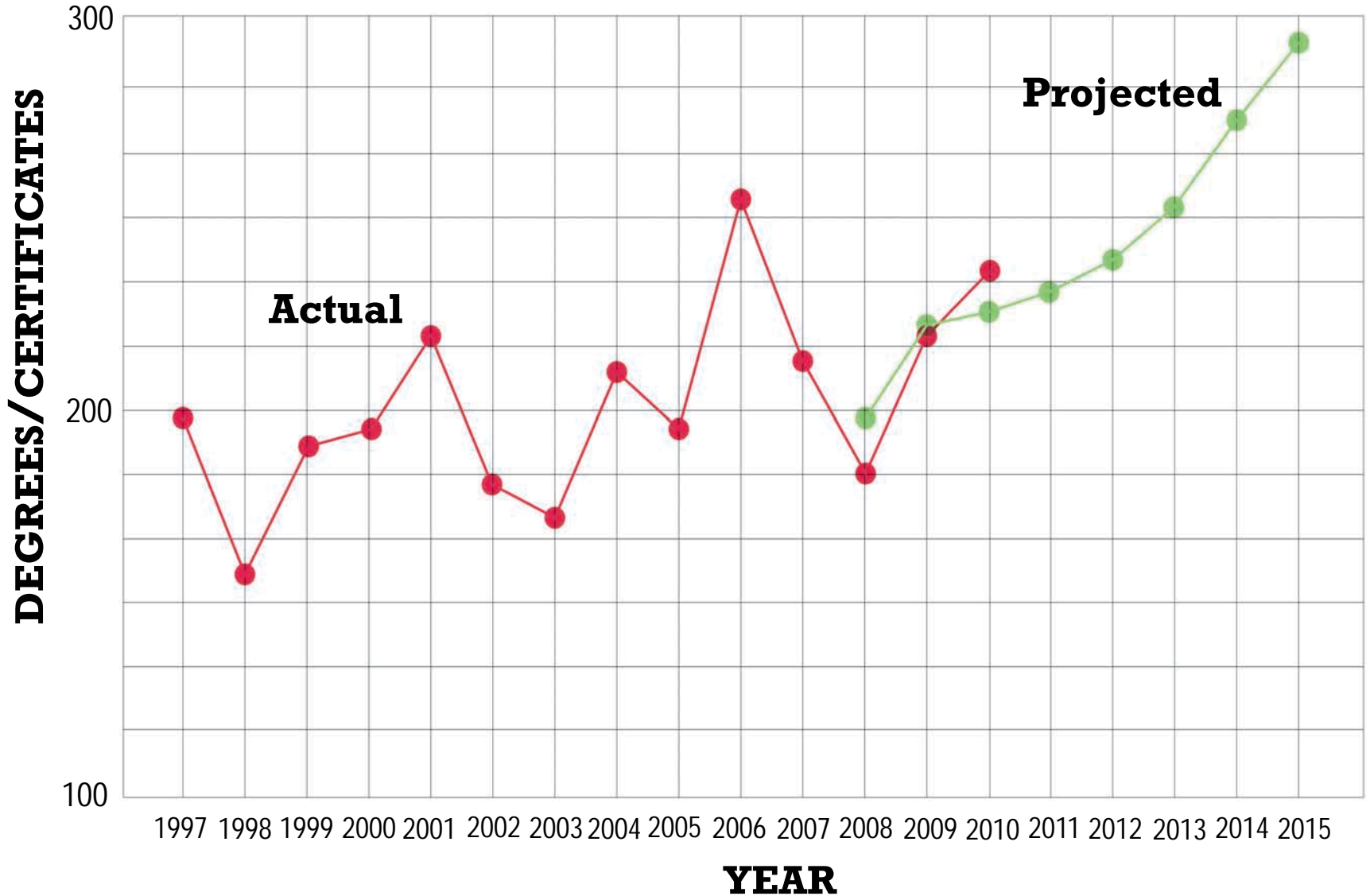
- A nationally known university with easy access close to home for students from leeward and central O'ahu.
- An economic engine, pumping hundreds of millions of dollars into the local economy and drawing leading-edge private sector businesses to its R & D park; generating over a thousand high quality jobs for Hawai'i residents.
- Internationally known for its spirit of innovation and focus on sustainability as its core operating principle.
- A world class “center” for culture and the arts for people across O'ahu, especially residents of the west side.
- An educational and cultural resource for Hawai'i's largest native Hawaiian community (Leeward O'ahu).



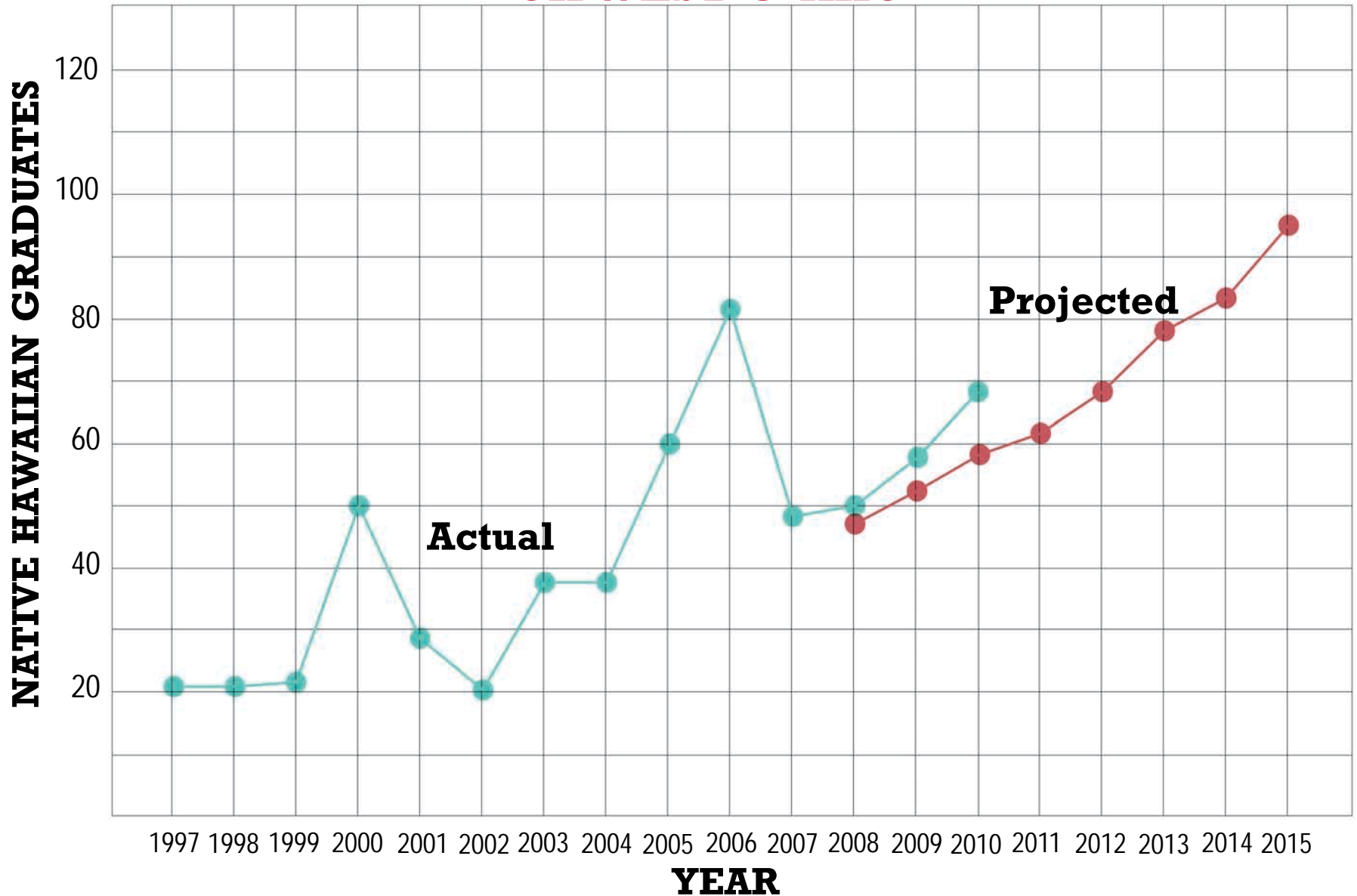
# UH West O'ahu Enrollment Growth



# UH WEST O'AHU DEGREES & CERTIFICATES OF ACHIEVEMENT EARNED



# DEGREE ATTAINMENT OF NATIVE HAWAIIANS AT UH WEST O'AHU



# UH West O‘ahu 4-year Degree Programs

- Accounting
- Anthropology
- Culinary Management
- Early Childhood Education
- Economics + Finance
- Elementary Education
- English
- General Business Administration
- Psychology
- Hawaiian Pacific Studies
- Applied Forensic Anthropology
- Computing, Electronics + Networking Technology
- Disaster Preparedness + Emergency Management
- Substance Abuse + Addictions Studies
- Health Care Administration
- History
- Justice Administration
- Marketing
- Philosophy
- Political Science
- Respiratory Care
- Sociology
- General Public Administration



# UH West O'ahu New Academic Programs

## RECENTLY DEVELOPED PROGRAMS (2009 – 2011)

- BA in Business Administration with concentration in Marketing
- BA in Public Administration with concentration in Disaster Preparedness and Emergency Management (DPEM)
- BAS in Information Technology
- BA in Business Administration in Management
- BA in Business Administration in Finance
- Certificate in Risk Management and Insurance

## ANTICIPATED FUTURE PROGRAMS (2012 – 2015)

- BEd in Middle/Secondary Education
- BEd in Special Education
- BA/BEd in Early Childhood Education
- BA in Environmental and Sustainability Science
- BAS Music Business (with MELE program)
- BA in Creative Media
- Security Administration Certificate
- Nursing (MOU with Kapiolani and Hilo)

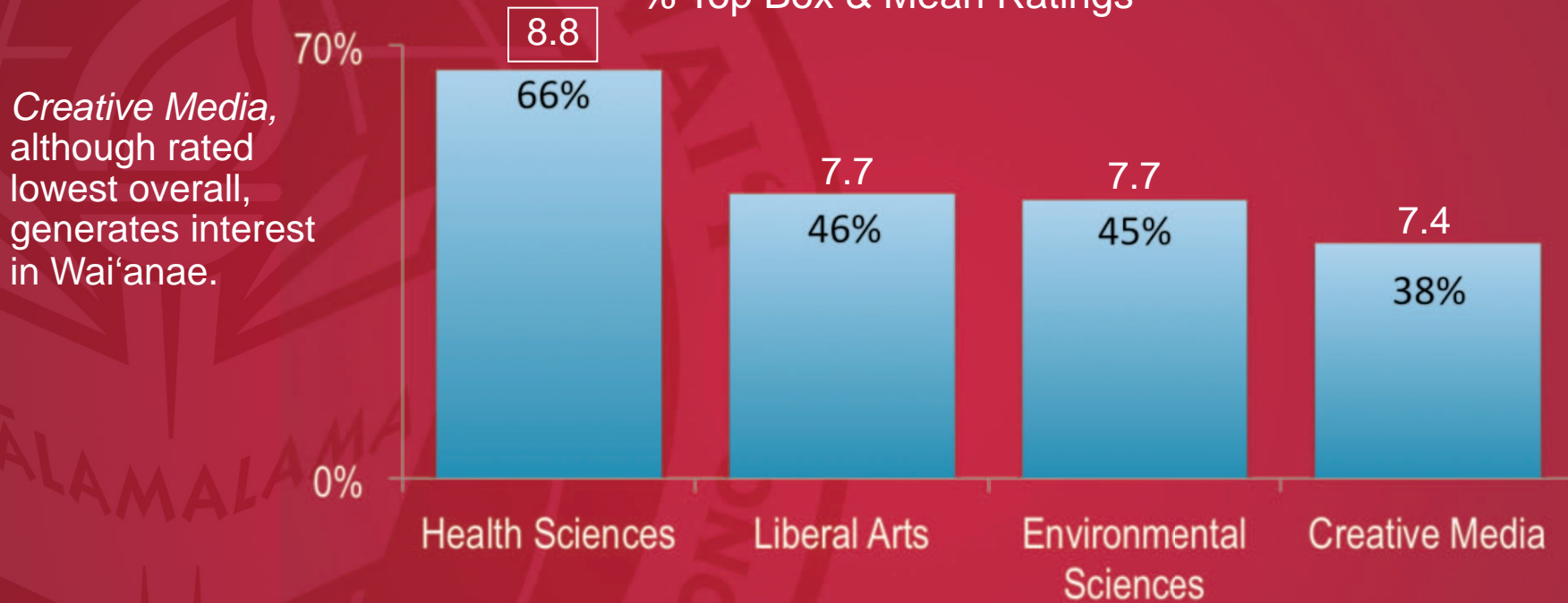
# INTEREST IN CAREER PROGRAMS

- Of 4 program areas, Health Sciences ranked highest, with Liberal Arts, Environmental Sciences, Creative Media reflecting moderately high interest.
- Health Sciences is key to Leeward interests; Creative Media is key for Wai'anae.

# Interest in UH West O‘ahu Career Programs

The *Health Sciences* clearly ranked highest for resident interest among the four Program Areas. There is also moderately high interest in the *Liberal Arts*, the *Environmental Sciences* and *Creative Media* programs.

% Top Box & Mean Ratings



*Creative Media*, although rated lowest overall, generates interest in Wai‘anae.

	Health Sciences	Liberal Arts	Environmental Sciences	Creative Media
Mean Rating	8.8	7.7	7.7	7.4
% Top Box	66%	46%	45%	38%
Top Box	10	9	9	8
Mid-Box	8	7	7	7
Bottom Box	6	6	6	6
Not Interested	5	5	5	5
Very Not Interested	4	4	4	4
Extremely Not Interested	3	3	3	3
Not at all	2	2	2	2
Extremely interested	1	1	1	1

Base: 500 West O‘ahu residents.

\* In OmniTrak analysis, Top Box=9-10; Mid-Box=6-8; Bottom Box=1-5.

Q11. If you were a student considering UH West O‘ahu for higher education, how interested would you be in having programs for \_\_\_\_, using a 10-point scale with 10 being extremely interested and 1 being not interested at all.

# Future of Allied Health Programs

- Allied Health
  - Make up 60% of health care workforce
  - Shortage of qualified workers
  - Bachelor's degree are required
- New Programs in
  - Allied Health
    - Medical Assisting
    - Physical Therapy
    - Occupational Therapy
    - Health Information Technology
    - Dental Hygiene
  - Long Term Care Administration and Gerontology

# Current Programs in Allied Health

- Certificate in Health Care Administration
  - Fully online; 6 courses; 18 credits
  - Began in spring 2007
  - BOR approved, stand alone degree
  - Current enrollment: 35 students
- Bachelor of Arts in Public Administration, Health Care Administration concentration
  - Began in Fall 2008
  - Fully online
  - Program approved and accredited by WASC
  - Current enrollment: over 130 students

# Current Programs in Allied Health

- Bachelor of Applied Science, Respiratory Care Concentration
  - Respiratory Care
    - Specialize in cardiopulmonary disorders
    - Changing industry expectations
    - Provides opportunities for career advancement and professional/management roles
- Bachelor of Arts in Public Administration, Disaster Preparedness and Emergency Management Concentration
  - Emergency Medical Services
    - Train EMTs to provide basic and advanced life support to patients in the prehospital emergency setting.
    - FEMA approved, careers in emergency management (seaport, airport security and natural disasters)

# Students and Graduates Success

- Justice, Public and Health Administration (JAH) Student Club
- Student internships
  - VA Medical Center
  - Department of Health
  - Hawaii Pacific Health
  - The Queen's Medical Center
  - Shriners, Straub, Kaiser, St. Francis, Waianae CCHC
- Graduates
  - Pursue graduate education: MPA, MPH, MBA, MSW, PhD in HCA
  - Offered full time employment in health care settings and at internship sites



# ARTICULATION AGREEMENTS

Partnerships with Industry

Partnerships with the Community Colleges

Partnerships with School-Based Programs

Partnerships with Community Organizations



# UH West O'ahu's Degree Pathway Partnership Agreements

## PREVIOUS ARTICULATIONS (AS OF 2005)

### HONOLULU COMMUNITY COLLEGE

AAS - ADMINISTRATION OF JUSTICE

BA - PUBA - JAD

### KAUAI COMMUNITY COLLEGE

AAS - ACCOUNTING

BA - GBUS



## CURRENT ARTICULATIONS (AS OF 2011)

BA - SSCI - ECED

BA - PUBA - JAD

BA - GBUS

BA - PUBA

SC - HCAD

BA - SSCI - ECED

BAS - CENT

MANANAWAI

MANANAWAI

BA - GBUS - MKT

BAS - RESP

BA - GBUS - ACC

BAS - CULN MGT

BA - PUBA

BA - GBUS

BAS - IT

BAS - EMS MGT

BA - GBUS

BA - GBUS

BA - GBUS

BA - GBUS

BA - SSCI - ECED

BA - GBUS

BA - GBUS

BA - PUBA

BED - ELEM

MANANAWAI

BA - GBUS

BA - PUBA

BA - GBUS

BA - BGUS

BA - SSCI - ECED

BA - GBUS

### HAWAII COMMUNITY COLLEGE

AS - EARLY CHILDHOOD EDUCATION

### HONOLULU COMMUNITY COLLEGE

AAS - ADMINISTRATION OF JUSTICE

AS - OCC. & ENVIR. SAFETY MGT.

AS - OCC. & ENVIR. SAFETY MGT.

AS - OCC. & ENVIR. SAFETY MGT.

AS - EARLY CHILDHOOD EDUCATION

AS CENT

PATHWAY

### KAPIOLANI COMMUNITY COLLEGE

PATHWAY

AS - MARKETING

AS - RESPIRATORY CARE

AS - ACCOUNTING

AS - CULINARY ARTS

AS - MICT

AS - LAW

AS - IT

AS - MICT

AS - HOSPITALITY AND TOURISM

### KAUAI COMMUNITY COLLEGE

AAS - ACCOUNTING

AAS - BUSINESS TECHNOLOGY

AAS - HOSPITALITY AND TOURISM

AS - EARLY CHILDHOOD EDUCATION

### LEEWARD COMMUNITY COLLEGE

AS - ACCOUNTING

AS - BUSINESS TECHNOLOGY

AS - BUSINESS TECHNOLOGY

AA - TEACHING

PATHWAY

AAS - SUPERVISORY MGT.

AAS - SUPERVISORY MGT.

### WINDWARD COMMUNITY COLLEGE

MOA

### MAUI COMMUNITY COLLEGE

AAS - BUSINESS TECHNOLOGY

AS - EARLY CHILDHOOD EDUCATION

AS - ACCOUNTING

# Risk Management & Insurance Certificate

PARTNERSHIP: provides training in risk management, personal and commercial insurance and prepares students for the licensure examination.



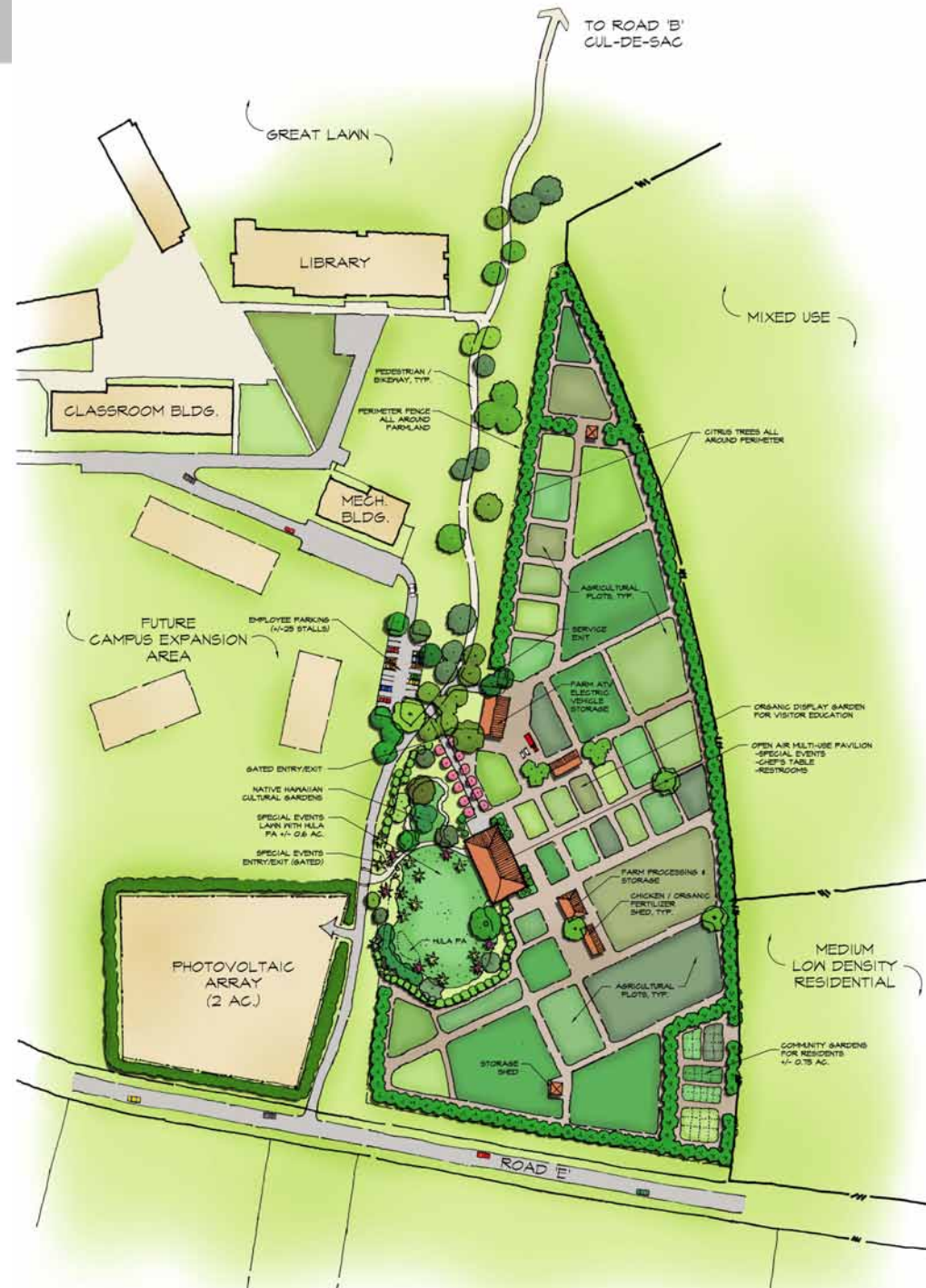
# Wai'anae Community Re-Development Corporation (WCRC)

## Searider Productions + Ma'ō Farms

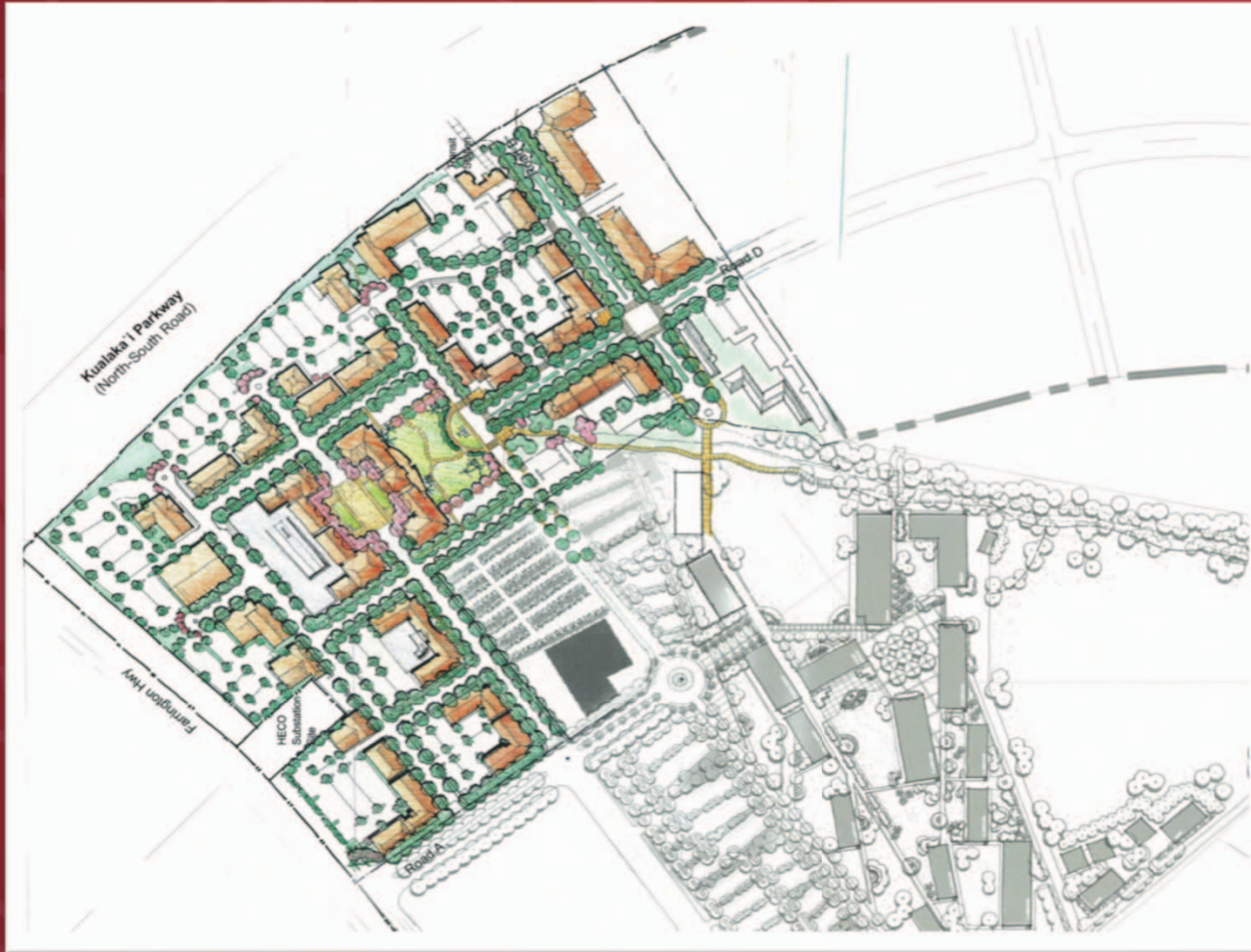
**PARTNERSHIP:** Guide students at Wai'anae and Nanakuli High School toward higher education at UH West O'ahu's upcoming Creative Media center. Develop a long-term agricultural/food production and education relationship.



# Ma'o Organic Farm and Hawaiian Cultural Activities Center



# University Village Concept



# Makai Campus

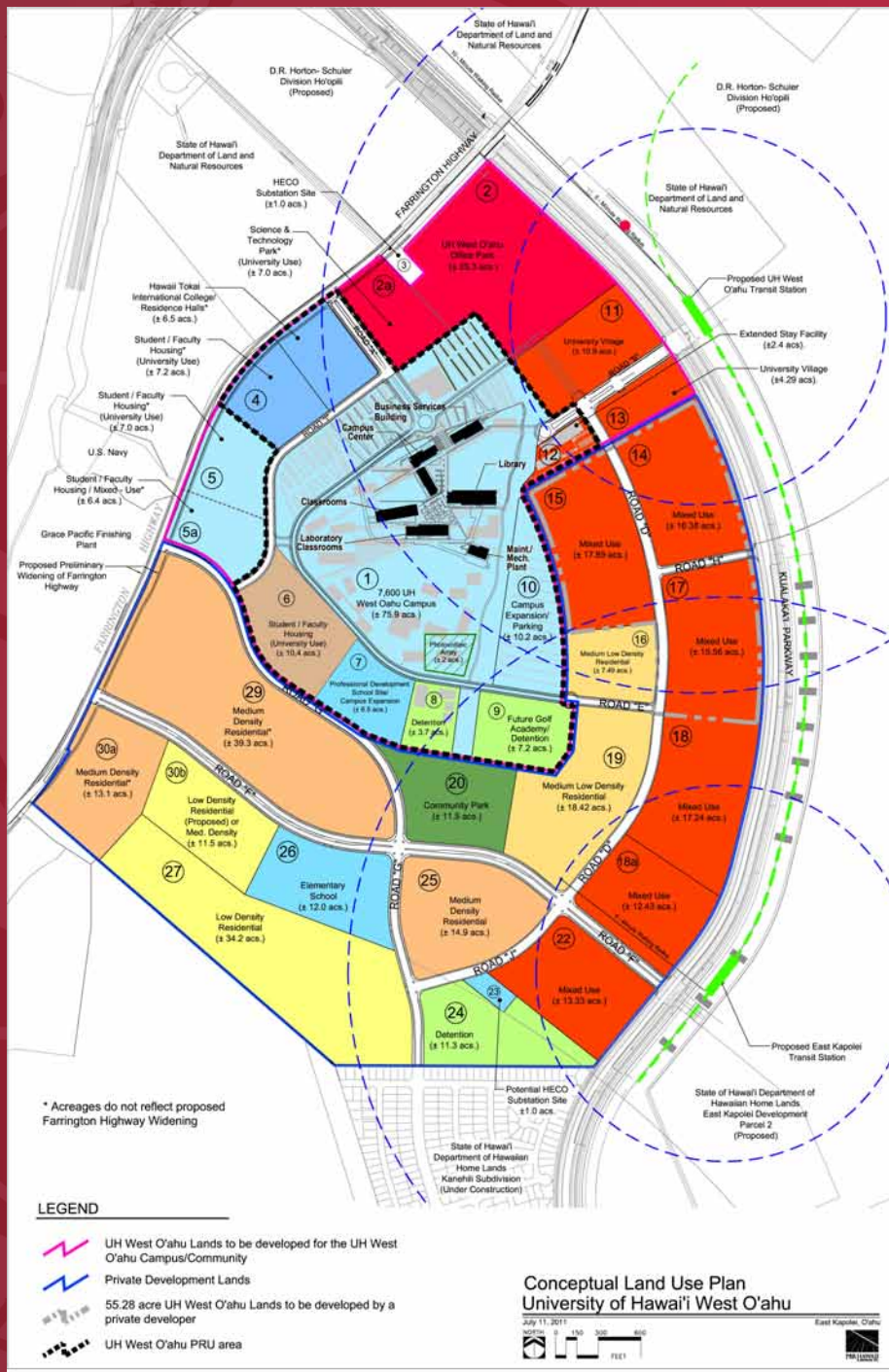
## Conceptual Land Use Plan (acreage)

### 202-acre Campus Site

- 76 Campus Proper
- 111 Campus Student Housing, Extended-Stay Facility, Campus Expansion, Mixed Use
- 15 University Village (BMX3)

### 298-acre Private Development

- 102 BMX 3 (Mixed Use/ Commercial)
- 161 Medium/Low Density Residential
- 35 Elementary School Site, Regional Park, Detention Basin, HECO Sub-station





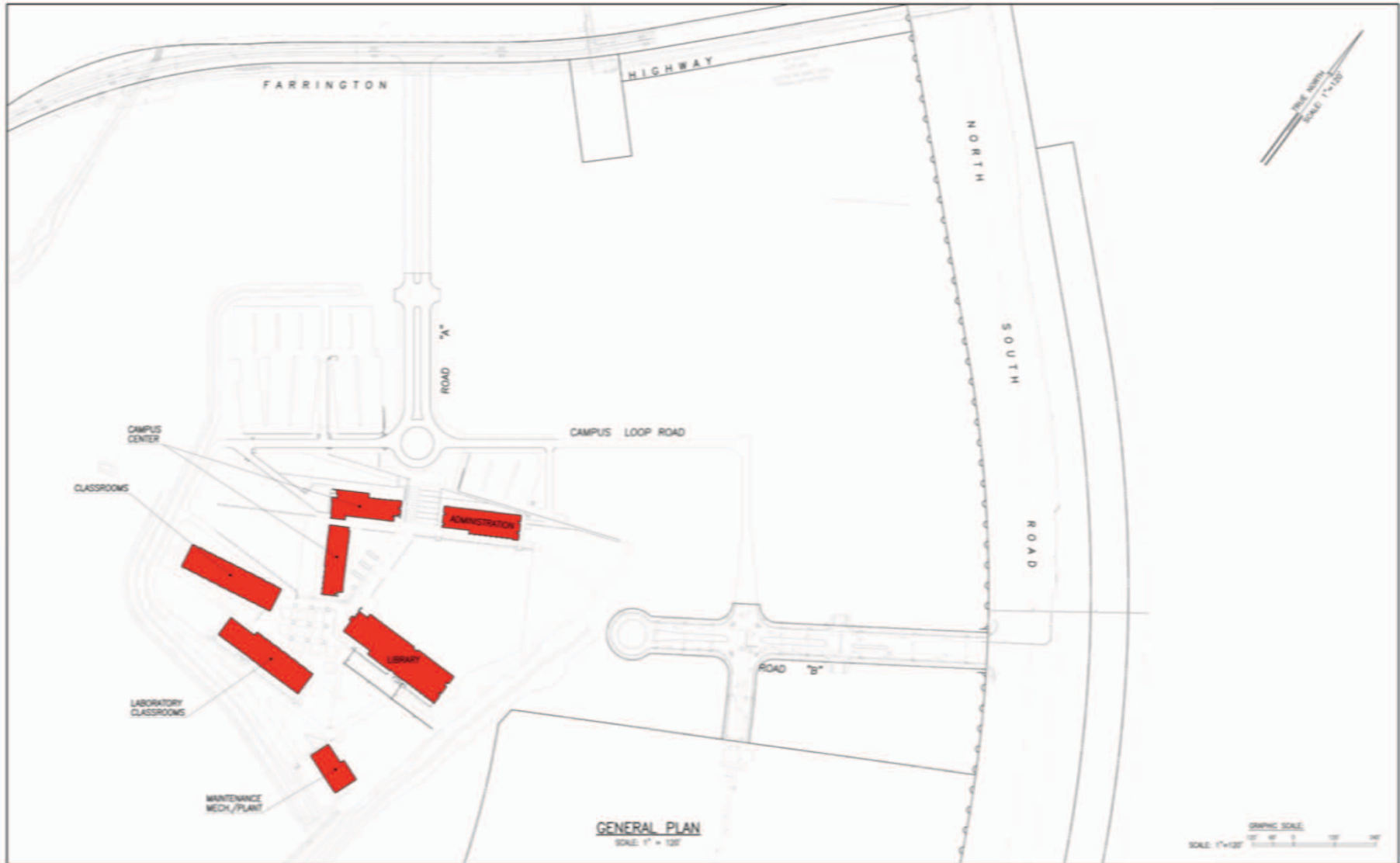
# UH West O'ahu at Kapolei Timeline



**SUSTAINABLE  
CAMPUS  
COMMUNITY**



# GENERAL PLAN





**SITE OF UH WEST O'AHU  
KAPOLEI CAMPUS**

Aerial Shot

# WATER TANK



# WATER TANK ACCESS ROAD



# CLASSROOM EXTERIOR



# CLASSROOM INTERIOR



# LABORATORY INTERIOR



# LIBRARY EXTERIOR





# CAMPUS CENTER EXTERIOR



# MAINTENANCE BLDG.



# ROAD B







## University of Hawai'i - West O'ahu

providing an environment where students and faculty can discover, examine, preserve and transmit knowledge and values that provide the foundation for the development of present and future generations of citizens and results in the improvement of the quality of life for all.