



HAPPY HOLIDAYS, FRIENDS & NEIGHBORS!

Sadly, this year holiday cheer is being tempered by caution and uncertainty.

But while this may be a Christmas season like no other, there are reasons aplenty for hope, for better days ahead and for our many blessings. I am especially thankful for my health, the health of my family and for my home here in Hawaii.

I am well aware that there are many that may not have a home, or good health, so now more than ever, during this time of giving, let's commit to performing unsolicited acts of kindness and extend a helping hand as much as we can to those in need.

Micah and I extend our holiday wishes to you and yours.

Stay safe and well,

A handwritten signature in black ink, appearing to be "Donna".



CONGRESS PASSES \$900 BILLION STIMULUS PACKAGE



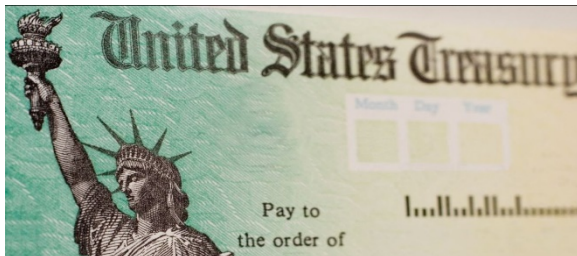
Hawai'i will receive at least \$1.7 billion from the \$900 billion COVID-19 relief package congressional leaders passed on Monday, December 21. This package would extend aid to millions of households through stimulus checks, enhanced federal unemployment benefits and money for small businesses, schools and childcare, as well as for vaccine distribution. The bill is awaiting approval from President Trump.

Below are details of what's included in the relief package.

Unemployment assistance - extension of unemployment insurance to help those who have lost their jobs or are experiencing reduced incomes.

- At least \$200 million in estimated funding will go to helping unemployed Hawai'i workers.
- Individuals to receive up to \$300 per week, which could run at least through March 14.
- Available to self-employed individuals, part-time workers, independent contractors, and gig workers, including rideshare drivers.

Direct cash payments - provides a one-time cash payment to millions of Americans.



- More than \$700 million is estimated to go to Hawai'i residents.
- Individuals will get \$600 (joint filers get \$1,200) plus \$600 per child.
- Benefits start to phase out for those with incomes exceeding \$150,000 for married couples, \$75,000 for singles, and \$112,500 for single parents.
- Payments will not go to single filers earning more than \$87,000; head-of-household filers with one child earning more than \$136,500; and joint filers with no children earning more than \$174,000.
- Social Security or Supplemental Security Income (SSI) beneficiaries will be eligible for this cash payment.
- Checks will be sent via direct deposit if you've already provided the IRS with your bank account information. If you received the first check directly into your account, then you're all set. If the IRS doesn't have your direct deposit info, you will likely get a check in the mail, or a pre-paid debit card like the last round of payments.

Rent relief and eviction moratorium - An estimated \$200 million to help Hawai'i residents with rent relief and extends until Jan. 31 a moratorium on evictions that was slated to expire at the end of the year.

Small businesses and non-profits - provides \$325 billion nationally for small businesses, including restaurants, hotels, live venues, and non-profits.



Testing and contact tracing - \$150 million in estimated funding to Hawai'i for testing and contact tracing.

Vaccine distribution and procurement - estimated \$35 million to Hawai'i to help distribute and administer COVID-19 vaccines.

Education - \$200 million for Hawai'i public schools to assist in reopening classrooms and prevent virus transmission.

Child care - \$10 billion for grants for child care providers, including an estimated \$25 million or more for Hawai'i.

Food and nutrition programs - provides \$13 billion nationally for nutrition programs, including funds for food banks, food pantries, school meal programs, and other nutrition programs, and a 15% increase in monthly SNAP benefits.



Transportation - \$128 million in estimated funding for Hawai'i to support transportation and airport services including:

- \$60 million for transit services in Hawai'i to enhance safety procedures for passengers and staff; and
- \$26 million for Hawai'i airports for operations and expenses related to coronavirus safety procedures.

COVID-19 VACCINATION UPDATE

The first shipment of COVID-19 vaccine doses arrived last week as the state's multi-month vaccination campaign gets underway. The state received 3,900 doses of Pfizer's treatment and distributed them to hospitals across Oahu, including Hawaii Pacific Health locations.

The initial allotment of vaccines will be prioritized to those with high exposure to COVID-19 patients and those who have increased risk for severe illness from the disease. They include the following:

1. Essential healthcare workers – high-risk healthcare workers involved in direct patient care, workers who provide healthcare facility services, and residents and staff of congregate long-term care facilities.
2. Essential workers – first responders such as police and firefighters, and corrections officers, transportation, education sector, food & agriculture, utilities.
3. Adults with high-risk medical conditions and adults 65 years and older.

We are
here



While there has been a delay in receiving the vaccines, healthcare officials confirmed that the state is still on track to receive the 81,000 vaccines it was expecting this month.

For more information, please review [the DOH's COVID-19 Vaccination Plan](#).

CDC REDUCES QUARANTINE REQUIREMENTS TO 10 DAYS



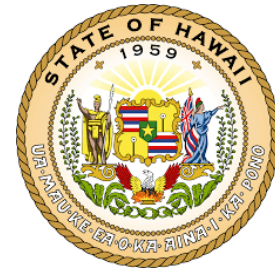
Based on the Centers for Disease Control and Prevention guidance, the Hawai'i Department of Health announced that it is reducing the required quarantine period of those who have been exposed to COVID-19 from 14 days to 10 days.

The DOH's updated guidance for 10-day quarantines comes with certain stipulations:

- It does not apply to those residing in congregate settings such as long-term care facilities, group care homes, assisted living facilities, correctional facilities, shelters, residential rehabilitation and treatment settings, or military recruit housing;
- Those who are in quarantine cannot have any clinical evidence of COVID-19 symptoms up to the time quarantine is discontinued; and
- Daily symptom self-monitoring must continue through day 14; those who develop symptoms within this time period should seek testing and self-isolate while awaiting results.

NEW EMERGENCY PROCLAMATION REDUCES QUARANTINE FOR TRAVELERS AND EXTENDS EVICTION MORATORIUM

A 17th COVID-19 emergency proclamation was issued on December 16, reducing the state's mandatory self-quarantine period for travelers entering the state and traveling between counties from 14 to 10 days. The new policy went into effect on Dec. 17 and will be in effect until Feb. 14, 2021



The change is based on updated recommendations issued by the Centers for Disease Control and Prevention and the State of Hawai'i's Department of Health.

In addition, the proclamation specifies the following:

- Moratorium on evictions extended until Feb. 14, 2021.
- Annual vehicle safety checks will no longer be suspended. Vehicle owners should plan to get their safety checks done since inspection stations have been open since May.

The 17th emergency proclamation is posted [here](#).

FURLOUGHS FOR STATE WORKS DELAYED

Governor Ige announced Wednesday afternoon that there will be a delay in state furloughs, that were set to begin on January 1, 2021.

In a letter sent to state employees, he said the state had been waiting to see if Congress would pass additional federal support to address the COVID-19 pandemic and its economic impacts.

On Monday night, Congress passed a \$900 billion relief package and is awaiting approval from President Trump. The governor decided to delay the implementation of the furloughs based on

the promise of federal aid. However, there is still uncertainty, and there is no timeline of when the furloughs will begin.



Earlier this month, the governor announced that a portion of state employees would be furloughed two days a month starting January 1, 2021 to balance the state budget. The state is projecting a budget shortfall of \$1.4 billion in the general fund for each of the next four years.

The furloughs would not apply to positions that support 24/7 functions, nor would they apply to jobs funded with non-general fund sources, which include 4,600 employees first responders, medical and public safety personnel, and employees at the departments of Commerce and Consumer Affairs and Transportation.

About 10,160 employees would be subject to the furlough.

31ST LEGISLATIVE SESSION TO CONVENE BUT REMAINS CLOSED TO THE PUBLIC

The 31st Legislative Session will convene on Wednesday, Jan. 20, 2021 at 10:00am.



As of this publication and due to COVID-19 restrictions, the State Capitol will be closed on Opening Day this year. Thus, there will be no festivities or access to our offices. Nonetheless, we will continue to diligently work to address the needs of our community and look forward to welcoming you back to the Capitol at a future date.

HOLIDAY SAFETY TIPS

The holidays are a special and joyous time of the year. It is also time to be especially alert to the possibility of crime, and accidents. Statistics show that people are especially vulnerable to burglary, theft, and other types of crimes during this hectic time of year. Taking that extra safety precaution could make your holiday safer and happier. For a detailed list of safety tips from the Honolulu Police Department, click [here](#).

36TH ANNUAL HONOLULU CITY LIGHTS IS A DRIVE-BY: DEC 9 - 27

The 36th annual Honolulu City Lights will open safely but scaled-down. Holiday decorations at Honolulu Hale can be enjoyed with a drive-by viewing on display from Wednesday, Dec. 9 through Sunday Dec. 27. For more information, click [here](#).



WAIKIKI TROLLEY HOLIDAY LIGHTS TOUR: DEC. 9 - 27

AAALLL ABOOOAAARRRDDD !!! Get on the trolley to enjoy the holiday lights as it drives by the Honolulu Hale area. Sing along to joyous Christmas songs and listen to jolly Christmas stories throughout the entire tour, all from the comfort of a festively decorated open-air double decker bus! Here's what you need to know:

- Dates: Dec. 9 thru Dec. 27 nightly, including Christmas Day
- Price: \$15.00 (adult) / \$10.00 (child)
- Lap child under 3yrs FREE (child must sit on an adult lap). Private charters are available.
- PICK-UP LOCATION AND TIMES: Departs Ward Village (Auahi Street):
- 6:00 PM | 7:00 PM | 8:00 PM; 9:00 PM on 12/11 and 12/18.
- Reserve your seats [here](#)

FOOD ASSISTANCE PROGRAMS

Below is a list of organizations that are offering food assistance within or near District 14.

Aiea 7th Day Adventist Church

99-005 Moanalua Rd.
Saturdays or by appointment
8:00am - 9:00am

Full Gospel Temple

2464 N School St.
Sundays
11:45am - 12:15pm

First Assembly of God - Red-Hill

3400 Moanalua Rd.
1st Saturday
7:00am - 9:00am

Kalihi Union Church

2214 North King St.
Thursdays
9:00am - 11:00am

St Timothy's Episcopal Church

98-939 Moanalua Rd.
2nd & 4th Tuesday
5:00pm - 6:30pm

Palama Settlement

810 N. Vineyard Blvd.
Call 808-848-2528 to set appointment the day before
9:00am - 11:00am

Central Samoan Assembly of God

3544 Kalihi St.
4th Saturday
1:30pm - 3:00pm

Parents And Children Together- KPT

1485 Linapuni St. Suite 103
Monday, Wednesday, Friday
9:00am - 3:00pm

Fountains of The Living Water

2412 Rose St., #100
3rd Saturday
2:00pm - 4:00pm

The Pantry by Feeding Hawaii Together

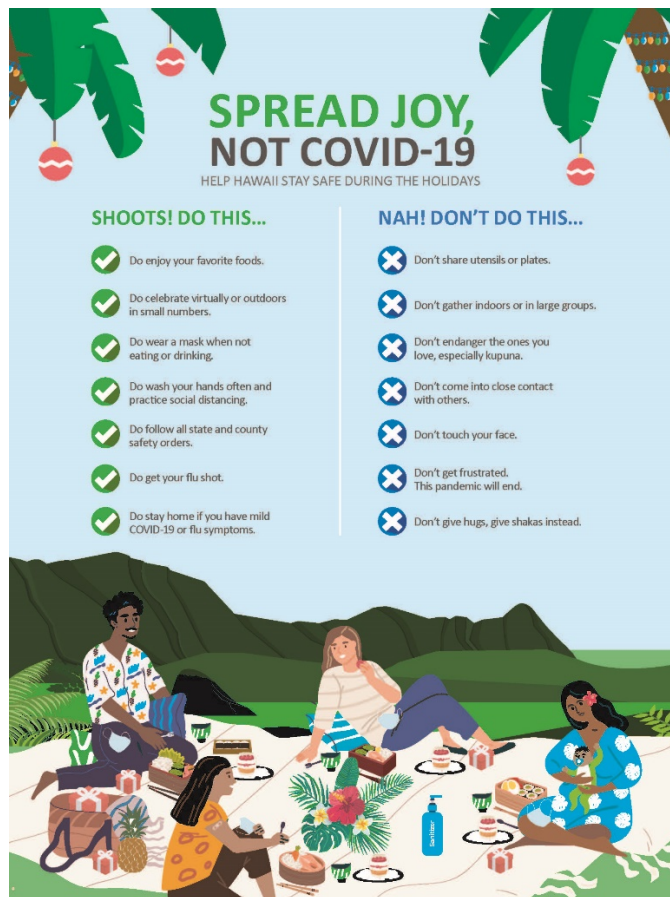
2522 Rose St.
By appointment only. Register and shop online at thepantry.org. Pre-order at thepantry.org and receive a confirmation email with pick up date/times.

COMMUNITY RESOURCES

The **[Aloha United Way 2-1-1](#)** is Hawai'i's statewide COVID-19 resources hotline partnering with the Department of Health. Residents can call 2-1-1 or go to their [resources website](#) for a comprehensive list of COVID-19 resources, which include:

- Business Assistance Services for COVID-19
- Child Care Expense Assistance for Health Care Occupations and COVID-19
- County Government Information Services for COVID-19
- Donor Services for COVID-19

- Emergency Dental Care for COVID-19
- Emergency Shelter for COVID-19
- Food for COVID-19
- Grocery Ordering/Delivery for COVID-19
- Home Delivered Meals for COVID-19
- Home Delivered Meals for Older Adults and COVID-19
- Information Sources for COVID-19
- Isolation/Quarantine Orders for COVID-19
- Landlord/Tenant Assistance for COVID-19
- Meals for COVID-19
- Medical Information Services for COVID-19
- Rent Payment Assistance for COVID-19
- Rent Payment Assistance for Hawaiian Community and COVID-19
- Rental Deposit Assistance for Hawaiian Community and COVID-19
- Senior Ride Programs for COVID-19
- State Government Information Services for COVID-19
- Tourist Information for COVID-19
- Undesignated Temporary Financial Assistance for COVID-19
- Unemployment Insurance for COVID-19
- Utility Service Payment Assistance for COVID-19
- Volunteer Opportunities for COVID-19



STAY CONNECTED, STAY ENGAGED



My office continues to serve you. Feel free to email us at senkim@capitol.hawaii.gov or call (808) 587-7200.

[Senate Special Committee on COVID-19](#)

[House Select Committee on COVID-19 Economic and Financial Preparedness](#)

[Economic and Community Recovery](#)

For questions about exemptions,
email CovidExemption@hawaii.gov