



IN THIS ISSUE

- ▶ Message From Kalani pg 1
- ▶ Lāna'i Community Health Center
Receives HIMSS Davies Award pg 1
- ▶ Funds Released For Capital
Improvement Projects pg 1
- ▶ Preparing For Natural Disasters pg 2
- ▶ Emergency Shelters In The 7th District pg 3
- ▶ Price Gauging Is Illegal During
Declared Disaster pg 3
- ▶ Legal Aid Available For Hāna Residents pg 3
- ▶ Hurricane Lane Weakened
To A Tropical Storm pg 4

MESSAGE FROM KALANI

Hurricane season began on June 1 and continues through November 30. Recently, we were fortunate to avoid a category five hurricane that was eventually downgraded to a tropical storm. Many parts of our State, including our district, experienced severe flooding, torrential rains and extensive damage to roadways and other infrastructures.

State and county governments prepared us for the worst. Now, we must remain vigilant during the remainder of the hurricane season.

SENATOR J.KALANI ENGLISH
HAWAI'I STATE SENATE 7TH DISTRICT

HĀNA, EAST AND UPCOUNTRY MAUI,
MOLOKA'I, LĀNA'I AND KAHO'OLawe



LĀNA'I COMMUNITY HEALTH CENTER
RECEIVES HIMSS DAVIES AWARD

Sen. English, Sen. Baker and Rep. DeCoite travelled to Lāna'i on August 3 to honor and congratulate the Lāna'i Community Health Center (LCHC) for receiving the Health and Information Management System Society (HIMSS) Davies Award, which recognizes outstanding achievement of organizations that have utilized health information technology to substantially improve community health outcomes.

Over the past few years, LCHC has demonstrated an extensive use of telehealth technology to provide health services to patients in remote areas, such as blood pressure monitoring for patients to monitor their blood pressure reducing the need for office visits.

The LCHC home blood pressure program, introduced in 2014, demonstrates its effective utilization of technology fully integrated with the clinical information system. Patients self-monitor their blood pressure, which is relevant since hypertension affects 30% of adults. In addition, approximately half of the patients with hypertension are not effectively managed.

LCHC started small, with only 24 patients. However, the initiative was so successful that the first 20 patients all enrolled in the program and bought blood pressure cuffs. In 2016, LCHC introduced off-the-shelf Bluetooth-enabled blood pressure cuffs and glucose meters, further improving data collection and reducing the need for office visits.

"The success that LCHC has achieved through their health information and technology initiatives is a proven testament of their dedication to providing quality healthcare for the Lāna'i community," said Sen. English. "This award is well deserved and I look forward to working with them to continue providing quality health care to the residents of Lāna'i and other rural communities."

Lāna'i Community Health Center, a non-profit organization, has been providing quality health services to the Lāna'i community in a supportive environment since August 2008. The organization places a particular focus on those who live below the federal poverty level; no one is turned away, because they do not have the means to pay. For more information, visit <http://www.lanaicommunityhealthcenter.org/>

Top: Rep. Lynn DeCoite, Senators English and Baker went to Lāna'i to honor and recognize the Lāna'i Community Health Center for receiving the HIMSS Davies Award. Lāna'i. Aug. 3, 2018.

FUNDS RELEASED
FOR CAPITAL
IMPROVEMENT PROJECTS

\$27,010,000 in funds were recently released for the reconstruction of Runway 3-21 at Lāna'i Airport.

PREPARING FOR NATURAL DISASTERS

Here are some tips in preparing for Natural Disasters:

BEFORE THE STORM

- Make plans to secure your property (install hurricane clips and storm shutters, cut overlying branches, clear rain gutters, turn off water, gas and electricity, and lock all entry points).
- Review your insurance coverage. Make a copy of your insurance policy in case you need to file a claim.
- Make copies of your important papers (identification cards, insurance policies, prescription medication).
- Create your emergency financial first aid kit. Make an inventory of your personal property (home, car, jewelry, computer, appliances, furniture). Photos and videos are a good way of documenting your property.
- Make sure you have a 14-day supply of rations (bottled water, non-perishable food items, medication).
- Make an emergency kit (battery powered radio, first aid kit, blankets, clothing, personal hygiene supplies, a small amount of cash).
- Make a plan for your pet (not all shelters welcome pets). Have enough food and medication for your pet and don't forget their ID tags, collar and leash.



BUILD KITS

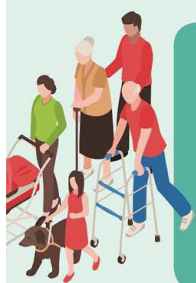
Have Go Bags ready for work, each family member, pets, & a vehicle safety kit too.

PLAN TO BE ON YOUR OWN FOR AT LEAST 2 WEEKS

Water (1 gal. per person/day)	Flashlight	Pet Supplies
Food (Non-perishable)	Can Opener	Fire Extinguisher
First Aid Kit	Tools	Glasses/Eye Care
Medical Equipment	Warm Clothes	Cash
Medications	Sturdy Shoes	Identification
NOAA Alert Radio	Personal Hygiene Items	Important Documents
Extra Batteries	Toilet Paper	Comfort/Entertainment

Check with your local emergency management office to:

- Sign up for emergency alerts and notifications.
- Identify your local emergency alert system (EAS) radio stations.
- Know your evacuation and alternate transportation routes.



WAYS TO HELP EACH OTHER

- Know how you'll help people & pets who normally rely on you.
- Form a neighborhood group. Please visit ready.hawaii.gov for a listing of preparedness groups.
- Help organizations in your neighborhood that may need support during a disaster.
- Attend free disaster skills workshops offered by your local emergency management office and learn basic survival skills.

AFTER THE STORM

- Continue to listen for the latest updates, wait for authorities to cancel any warnings, be aware of debris and other dangers on the road, and have your home or business inspected if there is the possibility of structural damage.
- When repairing your home or business, make sure you hire a licensed contractor. Call the DCCA Consumer Resource Center to check whether the contractor has a valid license and if they have any prior complaints.
- When purchasing vital consumer goods like food and water, be aware that price increases are prohibited during a state disaster.
- Check with your local water utility office for water quality and whether water treatment is necessary. State law prohibits sellers from making misleading claims about water treatment devices or about the safety of the water supply.
- Disaster victims may see an increase in door-to-door sales. Any contract you sign may be legally binding. If there is anything you don't understand in the contract, don't sign it! Under Hawaii's "cooling off" law, you have three business days to cancel in-home purchases of \$25 or more.
- When shopping for a loan to make your repairs, be aware of guarantees, 1-900 numbers and a request for money upfront. Be wary of advance-fee loan scams. Legitimate lenders may charge a processing fee, but don't guarantee in advance that you will qualify for a loan.
- If you are having difficulty paying your bills after a disaster, be sure to contact your creditors and explain your situation. They can discuss the situation and work with you on creating a plan.
- Protect yourself after a disaster. Beware of those taking advantage of disaster victims. Shop around for the best deal. If it sounds too good to be true it probably is.
- Beware of donation scams after a disaster. Many charitable organizations pop up after a disaster asking for donations to assist those that have been affected. Make sure you know who you're donating to.


COMMUNICATION IS KEY —

- Write down important emergency contact information.
- Texts are more likely to go through than calls.
- Have an extra cell phone charger and batteries.
- An out-of-area contact can serve as a relay point for family communication.



 @Hawaii_EMA

 facebook.com/HawaiiEMA

 ready.hawaii.gov

EMERGENCY SHELTERS IN THE 7TH DISTRICT

Below is a list of designated emergency shelters within Senate District 7:

East Maui: Hāna High and Elementary School

Upcountry Maui: Pā'ia Elementary School, Kalama Intermediate, Makawao Elementary, Ha'ikū Elementary,

Lāna'i: Lāna'i High and Elementary

Moloka'i: Kaunakakai Elementary, Kualapu'u Elementary and Moloka'i High School

For a complete list of emergency shelters, visit:

<https://rdcrss.org/20ZkpmQ>

Sign up for emergency notifications on your mobile device by texting "Maui" to 888777

PRICE GAUGING IS ILLEGAL DURING DECLARED DISASTER



LEGAL AID AVAILABLE FOR HĀNA RESIDENTS

FAMILY LAW CLINIC

**Friday, September 7, 2018
1:00PM**

at

Ohana Makamae

39 KEANINI DRIVE * HANA * HAWAII

Presented by:



Megan Moniz, Staff Attorney

Born and raised on Maui.
Kamehameha Schools – Kapalama Alumna.
Graduate of University of Hawaii at Mānoa,
William S. Richardson School of Law and
Clerked for Judge Richard Bissen.

Prior to joining Legal Aid, Megan worked for
the Hawaii State Legislature.

Ben Pittenger, Staff Attorney

Graduate of William Mitchell School of Law,
8-years of experience in Civil Litigation on
Maui, a Masters in Environmental Law and
Clerked for Judge Richard Komo.

Ben also taught sciences including 3-years at
Kalama Intermediate School. He now
regularly volunteers on native forest
restoration projects on Maui.



In collaboration with



'OHANA MAKAMAE
Hāna's Family Resource Center

LAW TOPICS

- *Uncontested Divorce*
- *Custody, Visitation or Support for unmarried parents*
- *Establishing Paternity*
- *Guardianship of a Child or Incapacitated Adult*
- *Adoption*
- *Abuse/Temporary Restraining Orders*
- *Power of Attorney*



To apply for Legal Aid services, call
1-800-499-4302
Monday-Friday
9:00 to 11:30am
1:00pm to 3:30pm

The Department of Commerce and Consumer Affairs (DCCA) says it has received four reports from the public regarding possible price gouging. The department is in the process of collecting more information and formal complaints for each instance.

Hawai'i Revised Statutes Section 127A-30 prohibits any increase in the selling price of any commodity, whether at the retail or wholesale level, during a declared disaster or emergency situation. If a business is found to be price gouging, it may face a fine of \$500 to \$10,000 per violation.

Please report all incidents of price gouging to the DCCA's Office of Consumer Protection by emailing ocp@dcca.hawaii.gov or calling either 243-4648 or 1-800-468-4644. Provide them with the following information:

- Name of business
- Location of the business (island, city, area)
- Item purchased (any specific information about the product)
- Name and contact number of the consumer

"During natural disasters or other emergency situations, gouging the price of emergency supplies is both illegal and unethical," said Sen. English. "As you prepare for these situations, it is important to be aware of this and if you suspect anything, take proper documentation and report it to the DCCA."

J. KALANI ENGLISH
Senate Majority Leader

COMMITTEES

Vice Chair, Senate Committee
on Labor

Member, Senate Committee
on Hawaiian Affairs

Member, Senate Committee
on Transportation and Energy

Member, Senate Committee
on Ways & Means



Hawai'i State Legislature
Bill Status and Documents
www.capitol.hawaii.gov/

HOW TO REACH US

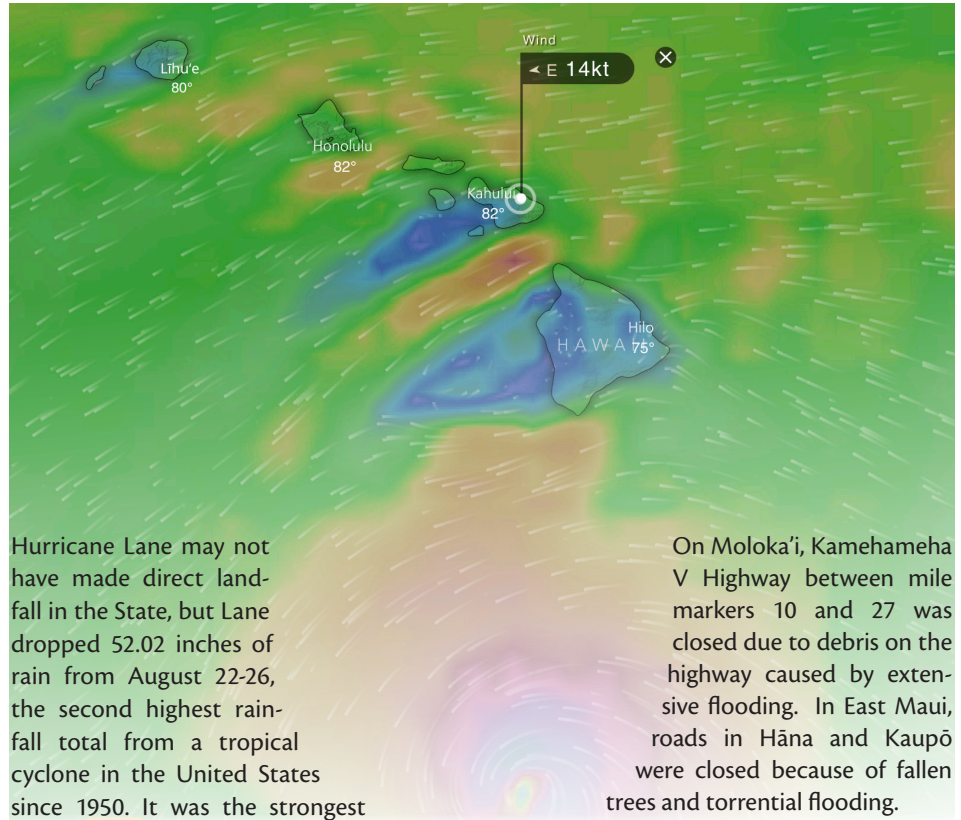
Hawai'i State Capitol, Room 205
415 South Beretania Street
Honolulu, HI 96813
ph 808-587-7225
fax 808-587-7230

From Maui, toll free 984-2400 + 77225
From Moloka'i and Lāna'i,
toll free 1-800-468-4644 + 77225
e-mail: senenglish@capitol.hawaii.gov

To receive this newsletter by
e-mail, please send your request to:
english4@capitol.hawaii.gov

Join us on Facebook
facebook.com/HawaiiSenateMajority

HURRICANE LANE WEAKENED TO A TROPICAL STORM



Hurricane Lane may not have made direct landfall in the State, but Lane dropped 52.02 inches of rain from August 22-26, the second highest rainfall total from a tropical cyclone in the United States since 1950. It was the strongest hurricane in the central Pacific since Loke in 2006, and the first Category 5 Pacific hurricane since Patricia in 2015.

As Hurricane Lane crossed into the Central Pacific Basin on August 19, it intensified into a Category 4 hurricane, and reached Category 5 intensity early on August 22. This prompted the issuance of hurricane watches and warnings for every island, including Maui County. All Department of Education (DOE) schools and State and County offices were closed on August 23-24 in anticipation of Lane making possible landfall.

Although Hawai'i Island seemed to be affected the most, Maui County also experienced substantial impacts from Hurricane Lane. In West Maui, the threat of the hurricane was briefly overshadowed by a brush fire in West Maui that burned over 2,000 acres and at least seven homes in Lāhaina, injured one person and forced the evacuation of hundreds of others.

On Moloka'i, Kamehameha V Highway between mile markers 10 and 27 was closed due to debris on the highway caused by extensive flooding. In East Maui, roads in Hāna and Kaupō were closed because of fallen trees and torrential flooding.

In Upcountry Maui, a large sinkhole was formed on Pu'u Way near Ulumalu Road in Ha'ikū when a drain pipe failed either by collapse or inundation of debris from upstream. The 4-6 foot corrugated metal pipes were washed downstream along with portions of the road. Three properties with three families were cut off as the instability of the ground threatened to get even bigger. Maui County is planning to lay gravel at the dead end to connect it to Ho'onalu subdivision, which does have an exit road.

"Like many across the State, I am relieved that Hurricane Lane did not make landfall and that it dissipated as it took a sharp turn West away from our islands," said Sen English. "I commend the State and County governments for being proactive in taking the necessary steps to prepare the State for any potential impact from the hurricane. The communication between the emergency management agencies and local media also played a key role in getting the proper information out to the public."