

# MILILANI/WAIPAHAU COMMUNITY REPORT

SENATE DISTRICT 18 – FEBRUARY 2021

*Serving Mililani Town, Waipio Gentry, Waikele, Village Park & Royal Kunia*



Aloha Friends and Neighbors,

It has been a whirlwind first month back in session as we work to alleviate the incredible economic and financial burdens on our state and community due to the pandemic. It is no easy feat, but we are committed to supporting local families and especially our keiki during these difficult times. I have introduced a number of bills intended to do just that--working to provide relief, support and transparency to our community in the hopes that we can return our children back to school and improve the status of our current local economy.

I also wanted to take this opportunity to wish you and your 'ohana a Happy Lunar New Year! This month brought back wonderful memories of past festivities and I know I was not alone in missing our traditional celebrations at the Capitol and throughout the state. Mahalo nui to the Ueda 'ohana who shared a surprise lion dance performance with Mililani neighbors--it was such a special treat! This year, we look forward to welcoming the year of the industrious Metal Ox, a year that hard work will be just as much rewarded as considerable effort is needed to push forward. 2021 is also the year that we will feel the weight of our responsibilities magnify from our actions in the year before. I look toward the Ox Zodiac as an inspiration for its strong will, entrepreneurial spirit, and unwavering resolution to accomplish any task ahead. I sincerely mahalo you all for your cooperation and wish you happiness, health, and good fortune this Lunar New Year. For more information on the Year of the Ox, click the image below. Kung Hee Fat Choy!



## SENATE VICE PRESIDENT

Chair:  
Committee on Education

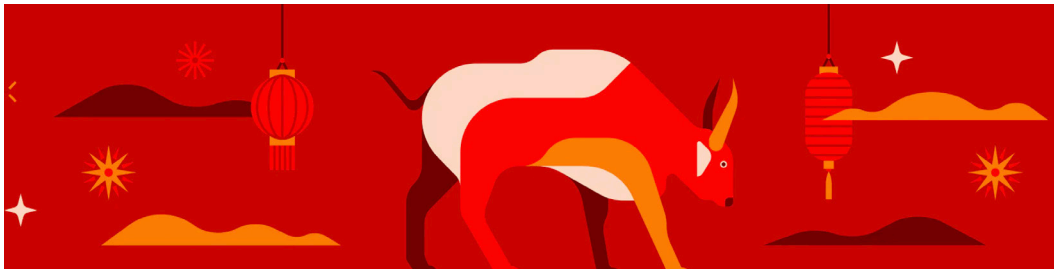
Vice Chair:  
Committee on  
Higher Education

Member:  
Committee on  
Ways and Means

Member:  
Special Committee on  
COVID-19

Hawaii State Capitol  
Room 228  
(808) 586-7100

[senkidani@capitol.hawaii.gov](mailto:senkidani@capitol.hawaii.gov)



Legislative Aide Felicity Teruya took to the Senate Floor on February 11, 2021 to begin Session with a Moment of Contemplation speech. In it, she offered thoughtful reflections on the notion of legacy. Her insight shared her personal gratitude for the familial history that came before her and encouraged us to all take a moment to do the same.

# KANOELANI PRAISE OUR PARTNERS LUNCHEON



I was thrilled to visit Principal Stacie Kunihi and Kanoelani Elementary School for their recent Praise Our Partners day! It was a wonderful opportunity to acknowledge the faculty, staff and partners who have supported their students. I am so proud of their innovative work and know their efforts will continue to inspire the community!

## U.S. PRESIDENTIAL SCHOLARS NOMINEES

**Alyssa Anela C. Buccat**  
Waipahu High School

**Antoinette Consolacion R. Pinera**  
Waipahu High School

**Reyan E. Lee**  
Waipahu High School

**Jeyan Francis A. Cornelio**  
Waipahu High School

**Joebe Rissa B. Sagabaen**  
Waipahu High School

**Christa A. Lopez**  
Waipahu High School

**Royce Daniel B. Ilaga**  
Waipahu High School

**Trisha Mae B. Valenzuela**  
Waipahu High School

**Marissa J. Nakamura**  
Waipahu High School

**Andrew J. Kim**  
Mililani High School

**Julianne Ysabella A. Viernes**  
Waipahu High School

The U.S. Presidential Scholars Program is one of the nation's highest honors for high school students, recognizing up to 161 students each year. The program was established by executive order of the President in 1964 to honor the extraordinary achievements of the nation's most distinguished high school seniors. Awardees are determined by outstanding performance on the College Board SAT or ACT exams, artistic excellence, essays, community service and leadership.



Of these high performing students, more than 5,200 national candidates qualified for the 2021 U.S. Presidential Scholars awards on the basis of merit, **including 64 public and private high school seniors from the state of Hawai'i and 11 from District 18!** I am in awe of the diligence and commitment of these students and celebrate their success and well-earned recognition!

## HAWAII SENATE SOCIAL MEDIA




Our hardworking Senate Communications staff have been diligently working to update the Senate social media platforms to keep the community better informed.

Be sure to follow the Hawaii State Senate [Facebook](#), [Instagram](#) and [Twitter](#) pages for legislative insights and helpful information to better understand our legislative processes.

**How does a bill BECOME LAW?**

- 1 Be introduced**  
A senator or representative must introduce a bill during the legislative session.
- 2 Committee Hearings**  
Each bill is referred to the relevant committee, for 3 readings in each chamber.
- 3 Readings**
  1. First reading takes place right away.
  2. Second reading takes place before the bill reaches its last committee.
  3. Third reading takes place when the bill has made it through committees.
- 4 Final Agreement**  
Have both the House and Senate agree on its exact wording.
- 5 Enactment**  
Be signed or allowed to become law by the Governor, or have the House and Senate successfully override the Governor's veto.

   | @HAWAIISENATE

## COVID-19 RESOURCES:

### 1. [State of Hawaii COVID-19 Portal](#)

The official COVID-19 state portal for all the latest updates and information on COVID-19.

### 2. [Senate Special Committee on COVID-19](#)

The Hawaii State Legislature's official site for updates by the Senate Special Committee on COVID-19. (Senator Kidani is a member of this committee)

### 3. [One Oahu](#)

The City & County of Honolulu's COVID-19 Response Team. This site shares frequently updated and relevant pandemic updates and resources for the community.

### 3. [Hawaii State Department of Health](#)

Stay updated with the most recent health updates on COVID-19 in Hawaii.

### 4. [Federal Pandemic Unemployment Compensation \(FPUC\)](#)

One of the newly extended federal benefits that will add \$300 a week to eligible claimants. FPUC will cover unemployment between Dec. 27, 2020 - March 13, 2021.



# ANTI-BULLYING KEIKI RESOURCES



UH Manoa Nursing and HI DOE's collaboration "Hawai'i Keiki: Healthy and Ready to Learn," is offering helpful resources for keiki and families to recognize and address bullying especially in this digital age of technology.

With cyberbullying on the rise, these toxic trends have proven to have severe implications on both the physical and mental health of our keiki, so it is important to have these conversations both at home and in school. Click [HERE](#) for more information and to access these resources for your children and family.

## A&B FOOD DISTRIBUTION

On February 1st I had the opportunity to join A&B in partnership with the Hawaii Farm Bureau at the Waipio Shopping Center to host a food distribution for the 600 restaurant, retail and service employees of Gateway at Mililani Mauka and Gateway at Mililani Mauka South, Pearl Highlands Center, Kunia Shopping Center, Waipio Shopping Center/Industrial Park and Laulani Village who have been impacted by COVID-19. It was a great morning providing groceries to these hardworking families alongside such amazing community leaders! Mahalo nui to Meredith Ching of A&B and Brian Miyamoto of Hawaii Farm Bureau for helping to address the needs of these deserving individuals and their 'ohana!



## COVID-19 RESOURCES:

### 1. [Aloha United Way](#)

Call 211 for the only statewide hotline partnering with the Department of Health for help finding food, shelter, financial assistance, childcare, disability services, etc.

### 3. [MEDQUEST](#)

The Department of Human Services MEDQUEST division provides eligible low-income adults and children necessary access to health and medical coverage through managed care plans. Find out if you are eligible and file your application online for medical assistance coverage

### 4. [SNAP](#)

The Supplemental Nutrition and Food Assistance Program is funded through the USDA to qualifying households. Find out if this program will support your family at the link above.

### 5. [Hawaii Foodbank](#)

This dedicated nonprofit has been at the forefront of this pandemic working tirelessly to provide and distribute food throughout the community. Learn more about their efforts as well as more information on their upcoming food drives or to donate or volunteer.

# BILL STATUS UPDATES

**Hawaii** State Legislature

## **SB804: RELATING TO TEACHER RENTAL HOUSING**

Even during tough times, I will not lose focus on the critical need to recruit, retain, and support our teachers. These have been incredibly challenging times for all of us, but our public educators have truly gone above and beyond. In the face of uncertain working conditions, constant shuffling and reshuffling of school reopening plans, and the looming threat of paycuts and furloughs, teachers have been steadfast in their resolve to provide as much as they can. [SB804](#) authorizes the Hawaii Public Housing Authority and the Hawaii Housing Finance and Development Corporation to use their existing authority to build affordable housing specifically targeting teachers. Unfortunately, many of our teachers, especially new teachers, do not earn a living wage. This is a way to keep more teachers in Hawai'i teaching the next generation by helping with their cost of living.

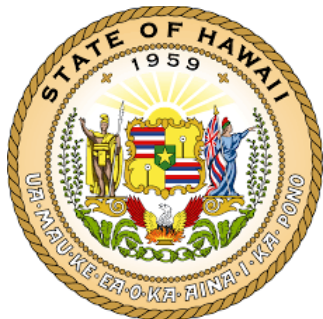
## **SB807: RELATING TO EDUCATION**

School accountability is a critical component to ensuring that our students have learning environments that are meeting their needs. A school's academic plan is an annual roadmap developed by the school administration, staff, and community members to prioritize areas for the school. [SB807](#) asks for some simple changes to ensure that when the annual academic plan is developed, some essential accountability items are included in that plan. For example, if a school prioritizes increasing English Language Arts proficiency, then they should also note the resources, both monetary and personnel, that they plan on using to achieve this goal. This is important to include because it also signals to the broader community opportunities for them to support their local schools.

## **SB811: RELATING TO THE DEPARTMENT OF EDUCATION**

It is important that our communities have accurate reporting of COVID-19 cases within our school system. I have continuously asked that the Department of Education report COVID-19 cases with contact in our schools to report by each school and not by the complex area. The geographic distance that a complex area can span creates unnecessary anxiety within our communities and fuels speculation and rumors. [SB811](#) will require the DOE to provide a weekly report by school for students, staff members, or affiliated individuals who tested positive for COVID-19.

## 2021 LEGISLATIVE PROCESS CHANGES



The Hawai'i State Capitol will remain closed and in-person hearing attendance will be suspended throughout the 2021 Legislative Session due to the COVID-19.

In lieu of on-site testimony, however, new protocols including live web broadcasts and virtual testimonies will ensure public transparency and accessible opportunities for voices to be heard.

To learn more about new protocols regarding Legislative Committee Hearings in 2021 and how you can submit remote testimony online via Zoom head to the

[Hawaii State Capitol Website.](#)

[Click the image](#) to download the Aloha Safe app to your smartphone to stay updated with contact tracing & how to keep your 'ohana safe from COVID-19!



For more information on Senator Kidani's bill proposals and status updates via the Capitol website!

### 1. [SB804: Relating to Teacher Rental Housing](#)

Authorizes the Hawaii Public Housing Authority and Hawaii Housing Finance and Development Corporation to provide rental housing projects for teachers employed by the DOE and public charter schools.

### 3. [SB807: Relating to Education](#)

Requires the department of education to submit an annual report on the school academic and financial plans to the board of education and the legislature.

### 4. [SB808: Relating to the School Facilities Agency](#)

Transfers the total fund balance in the state educational improvement fund to the school facilities special fund by a certain date.

### 5. [SB811: Relating to DOE](#)

Requires the DOE to publish a weekly report on schools that have reported COVID-19 cases.

### 5. [SB830: Relating to Employment](#)

Requires each department to establish a telework and alternative work schedule policy.

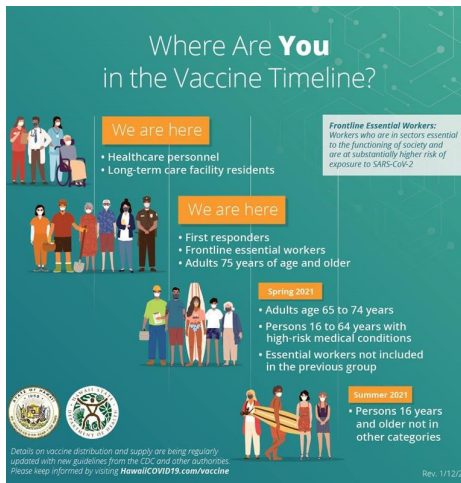
### 5. [SB1387: Relating to Microchip Identification](#)

Requires dog and cat owners to microchip their pets, if the pets are not licensed.



# COVID-19 VACCINATION PROGRAM

The Hawaii Department of Health is working with local, state and federal agencies as well as hospitals and healthcare providers to safely and quickly administer the COVID-19 vaccines. The vaccine is available at Points of Distribution (PODs) and registrations are being accepted. I have asked Governor Ige and DOH to provide more PODS in the Mililani and Waipahu areas. Healthcare personnel, long-term care facility residents, first responders, frontline workers and adults 75 or older are the current groups of individuals who qualify for the vaccine in this first wave of vaccinations. In the coming months additional tiers will open to account for other age groups, high-risk medical conditions, etc. to ensure that the vaccine is available to all.



## COVID-19 RESOURCES:

### 1. [Vaccine Registration](#)

Currently accepting vaccination registrations for kupuna ages 75 and older. Eligibility is required based upon Hawai'i's tiered program and must review the prevaccination checklist before receiving their vaccine.

### 2. [Hawaii Vaccination Plan](#)

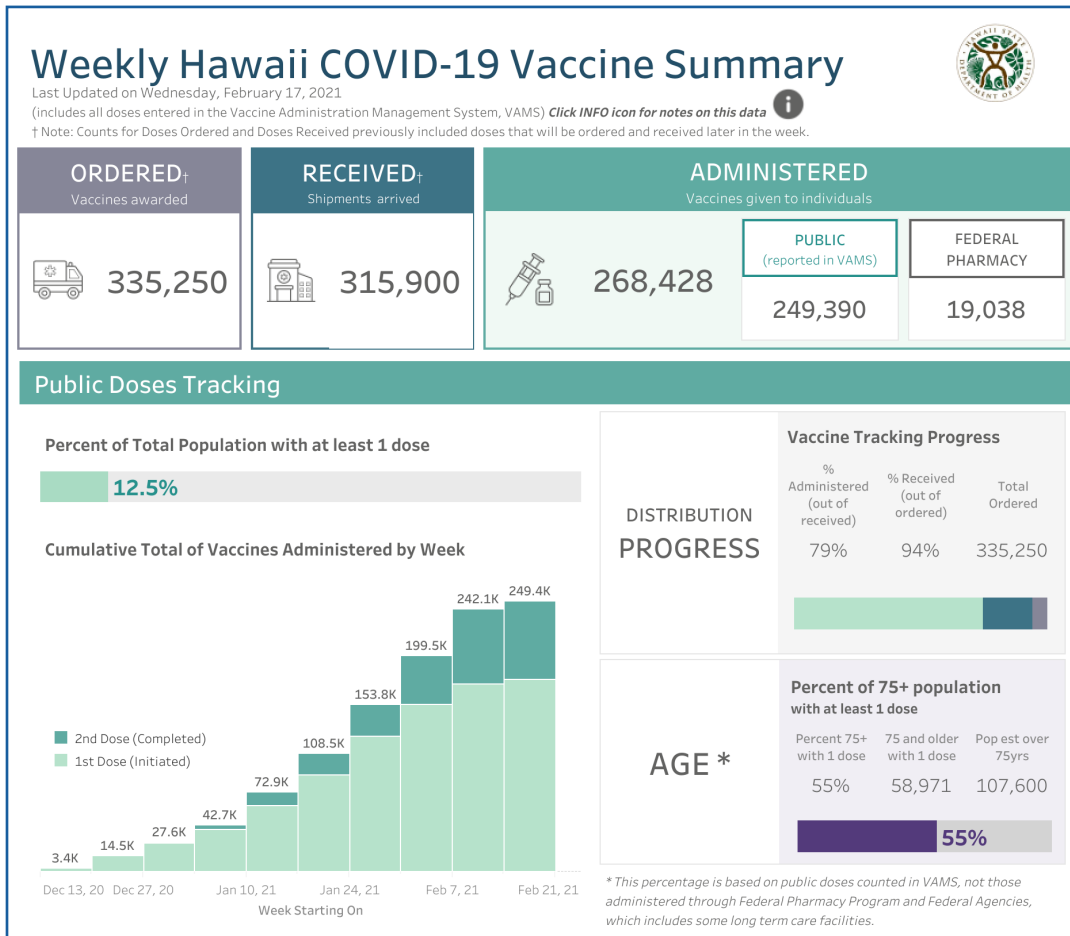
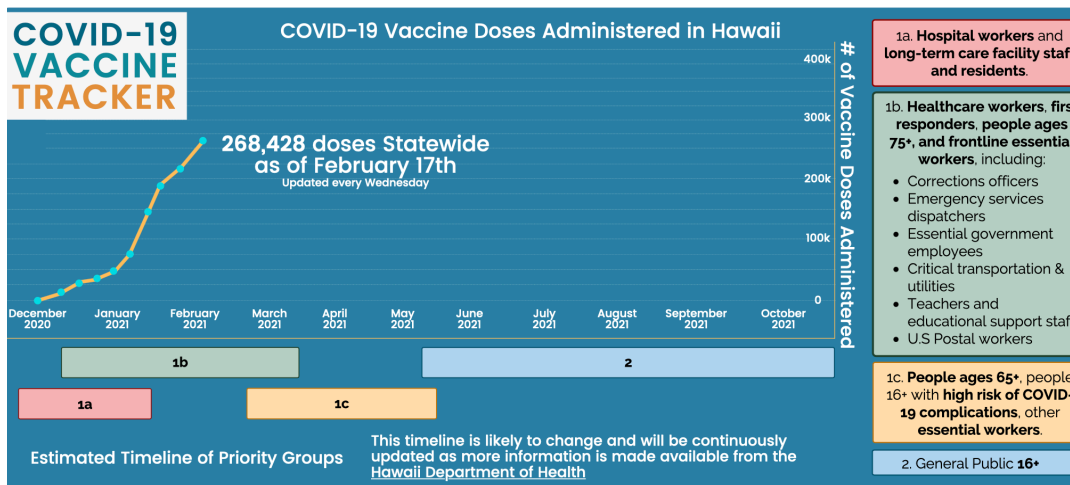
For more information regarding Hawai'i's detailed vaccination plan, please refer to the CDC-approved executive summary noting the operational structure to reach high-risk groups as quickly and efficiently as possible.

### 3. [Statewide PODs](#)

A list of clinics or Points of Distribution (PODs) note locations throughout the state where you can receive your COVID-19 vaccination.

### 4. [COVID-19 Vaccine Safety, Expectations & FAQs](#)

One Oahu offers information regarding Hawai'i's distribution plan, vaccine safety, as well as what to expect when receiving the vaccine and a list of FAQs to address community vaccine concerns. It is important to note that people who have recovered from COVID-19 are still urged to receive the vaccine with new variants being introduced into the country and natural immunity varying between individuals. Mask-wearing and hyper hygiene is still urged after receiving a vaccination.





# ALOHA 'ĀINA RECYCLING DRIVE



Sponsored by Schnitzer Steel in partnership with the Kōkua Hawai'i Foundation's 3R's School Recycling Program

LOCATION: **Waipahu High School**  
**94-1211 Farrington Highway Waipahu, HI 96797**

DATE: **Saturday February 27, 2021** TIME: **9am to 12pm**

### ACCEPTED AND RESTRICTED ITEMS:

RESIDENTIAL MATERIALS ONLY, PLEASE. NO COMMERCIAL OR GOVERNMENT DROP OFFS.

#### SCRAP METALS

**YES:** All types of scrap metal including bicycles, washers, dryers, fencing, filing cabinets, etc.

**NO:** Refrigerators, AC units, any compressed gas cylinders, or microwaves



#### COOKING OILS

**YES:** Used cooking oil in sealed containers

**NO:** Motor oil or leaking containers



#### RENOVATION MATERIALS

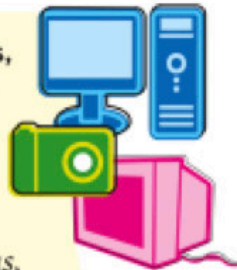
**YES:** Furniture, building materials, appliances, tools, and cabinets in usable condition

**NO:** Soiled, moldy, or broken materials

#### ELECTRONICS

**YES:** All TVs, computers, printers, scanners, monitors, large toner cartridges, laptops, game systems, cameras, cell phones, cables and cords

**NO:** Smart boards, microwaves, fans, vacuums, blenders, large printer & copier machines, or multiple loads (please limit your donations to one small truckload one TV and bag of toner cartridges per dropoff)



#### HI-5 ALUMINUM CANS, PLASTIC & GLASS BOTTLES

**YES:** Only HI-5 containers; remove caps and excess liquid

**NO:** General recycling including cardboard, #1 & #2 non-beverage plastic containers, glass jars, wine bottles, metal food cans



Proceeds from scrap metals, used cooking oil and HI-5 beverage cans and bottles will go directly to the host school.



The 3R's Recycling Program is a program of the Kōkua Hawai'i Foundation. For more information, write to [3Rs@kokuahawaiifoundation.org](mailto:3Rs@kokuahawaiifoundation.org).

kōkua hawai'i foundation



[kokuahawaiifoundation.org](http://kokuahawaiifoundation.org)

© 2018 Kōkua Hawai'i Foundation (Rev. 8/13/20)