

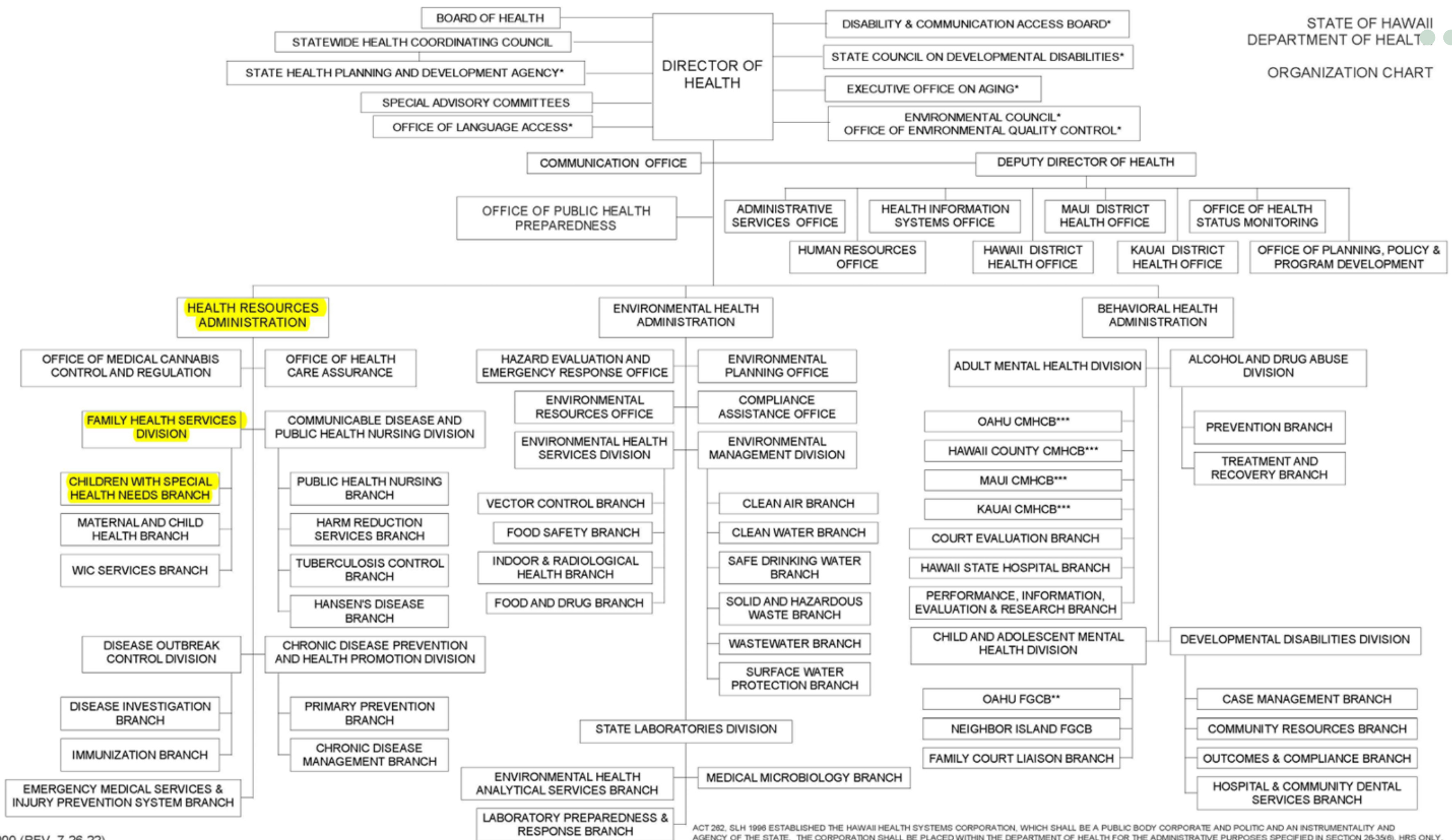
# PEDIATRIC MENTAL HEALTH CARE ACCESS (PMHCA) GRANT

RENZYMEIR BALORAN  
KEIKO NITTA  
EDEN SUN  
MATTHEW J SHIM

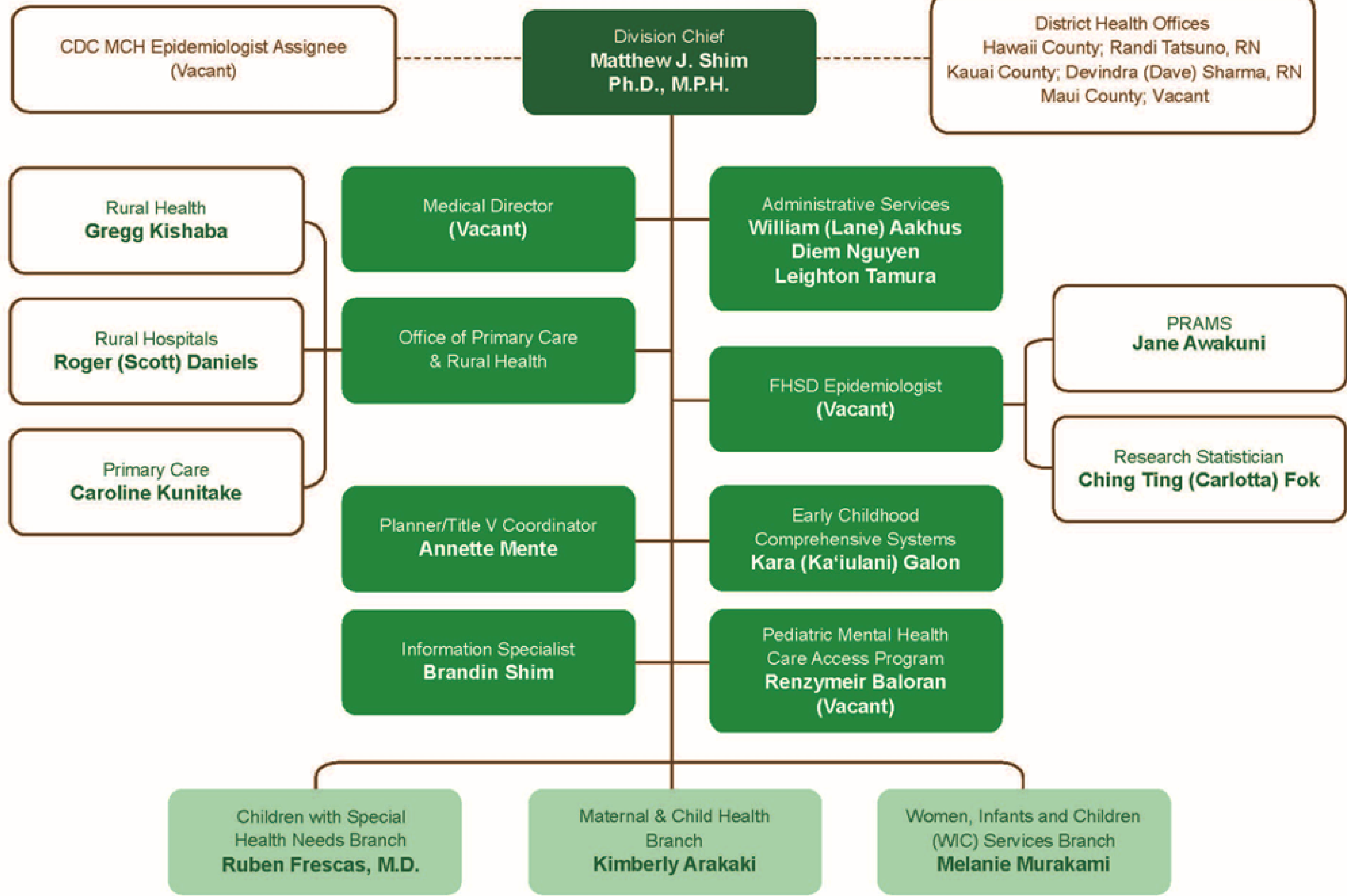
DEPARTMENT OF HEALTH  
FAMILY HEALTH SERVICES DIVISION

JANUARY 26, 2024









...

**PEDIATRIC  
MENTAL HEALTH  
CARE ACCESS  
GRANT**

...

The image features a dark teal background with decorative line-art illustrations of various leaves and branches in a lighter teal color. The leaves are scattered in the corners, with a large cluster in the top right and another in the bottom left. The text is centered and consists of four lines: 'PEDIATRIC', 'MENTAL HEALTH', 'CARE ACCESS', and 'GRANT'. Each line is in a bold, white, sans-serif font with a slight drop shadow. There are three white dots in the top left corner and three in the top right corner.

# HRSA GRANT DETAILS



## Purpose:

- Promote behavioral health integration into pediatric primary care
- Develop pediatric mental health care model to increase overall access
- Provide teleconsultation, training, technical assistance, and care coordination for pediatric primary care providers to diagnose, treat, and refer children with behavioral health conditions

## Award Details :

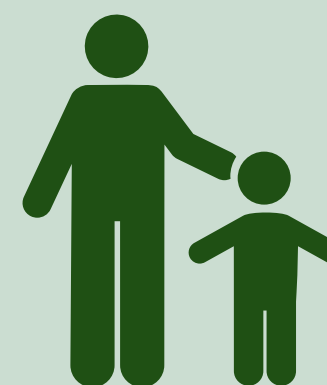
- \$2.2 Million Grant
- Grant term ends September 2026

## Audience:

- Providers servicing children and youth ages 0 - 21

**HRSA**

Health Resources & Services Administration



Parent & Child



Pediatrician

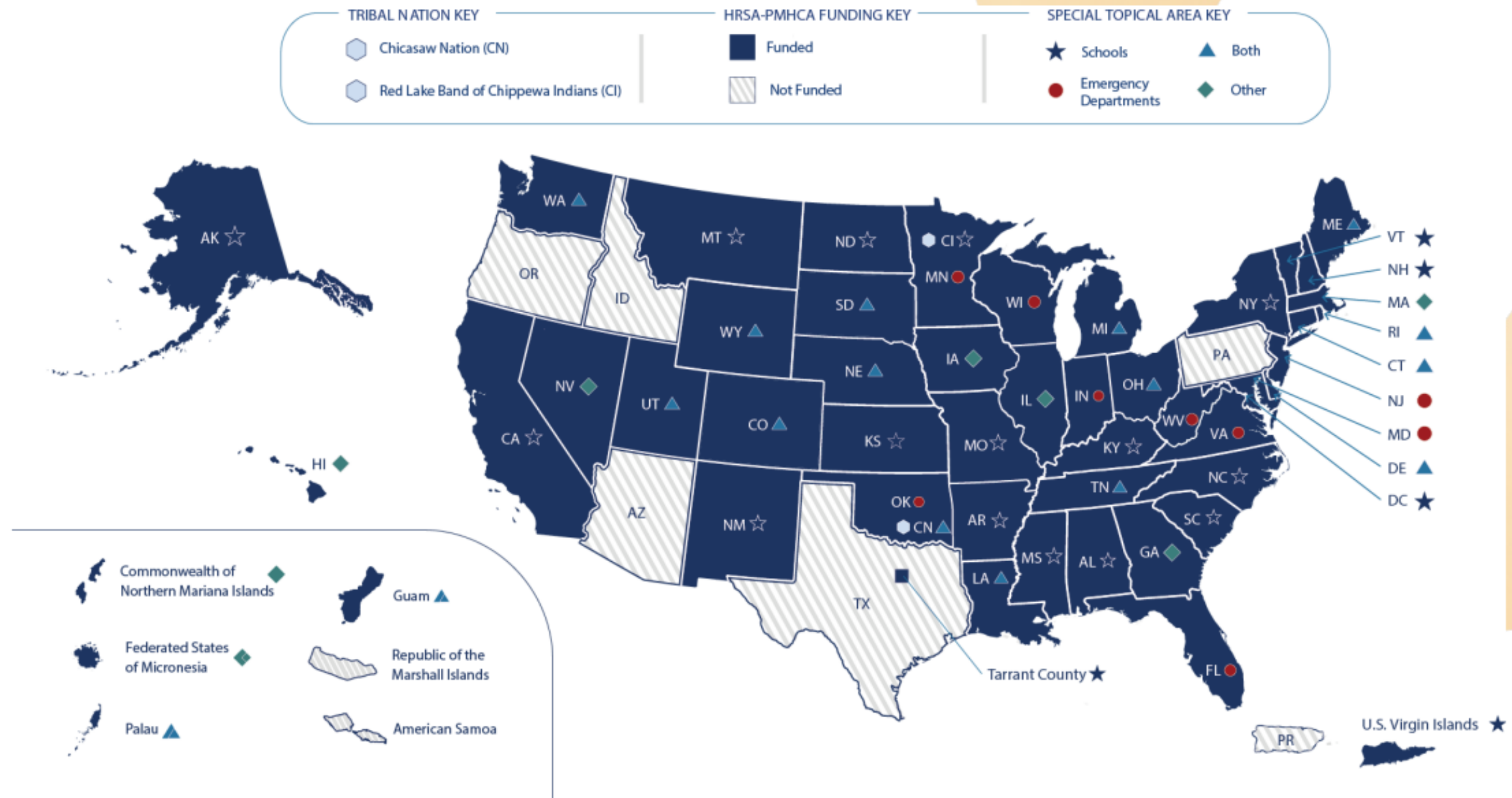


Pediatric Mental Health Care Team





# HRSA GRANT RECIPIENTS



<https://mchb.hrsa.gov/programs-impact/programs/pediatric-mental-health-care-access>





# HRSA PMHCA GRANT DELIVERABLES



*Three deliverables to the HRSA grant*



**1**

**Provide training to Pediatric Providers on Behavioral Health Topics**



**2**

**Create a warmline for Pediatric Providers to access curbside consult from a child psychiatrist**



**3**

**Provide coordinated referrals and intake services**







# WHY PEDIATRIC PROVIDERS? WHY A CONSULT LINE?

Child Mental and Behavioral Health in Hawai'i (2020-2021)

**11.4%**

Children 3-17 did not receive needed Mental Health Treatment

<https://www.hawaiihealthmatters.org/indicators/index/view?indicatorId=12131&localeId=14>

**15.2%**

Children 3-17 with Mental, Emotional, Developmental, or Behavioral Problems

**30.4%**

experienced 2+ ACEs

**18.8%**

experienced 1 ACE

<https://www.hawaiihealthmatters.org/indicators/index/view?indicatorId=14065&localeId=14>

**Increased need of managing Behavioral Health conditions in children and youth**

**Longitudinal therapeutic relationship with Pediatrician and patient**

**Serve as a trusted source of information**

**Inadequate number of Child Psychiatrists/APRNs**

**Frees up scarce Child Psychiatrists to manage complex conditions**

**Supports advantages of integrated clinicians and collaborative care**





# HAWAI'I YOUTH POPULATION DATA

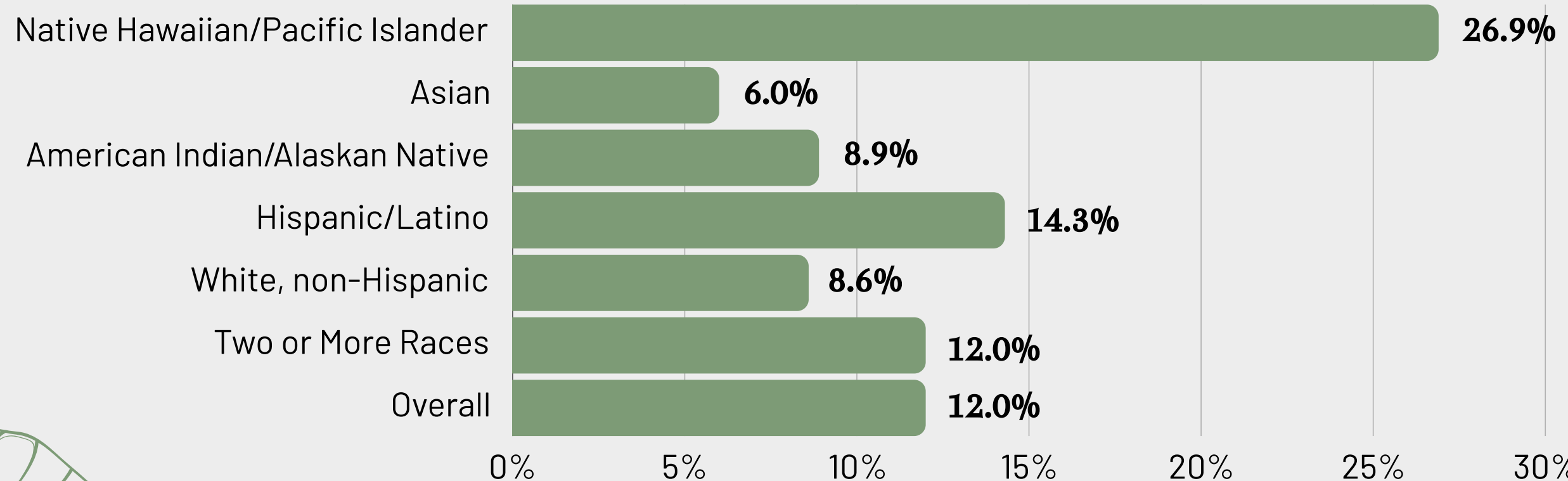


**297,326**

*children under the age of 18 in  
Hawai'i in 2022*

<https://www.hawaiihealthmatters.org/indicators/index/view?indicatorId=6173&localeId=14>

## 2017-2021 Children (<18) Living Below Federal Poverty Level



<https://www.hawaiihealthmatters.org/indicators/index/view?indicatorId=189&localeId=14&localeChartIdxs=1%7C2%7C3%7C4>



# BARRIERS TO ACCESSING CARE

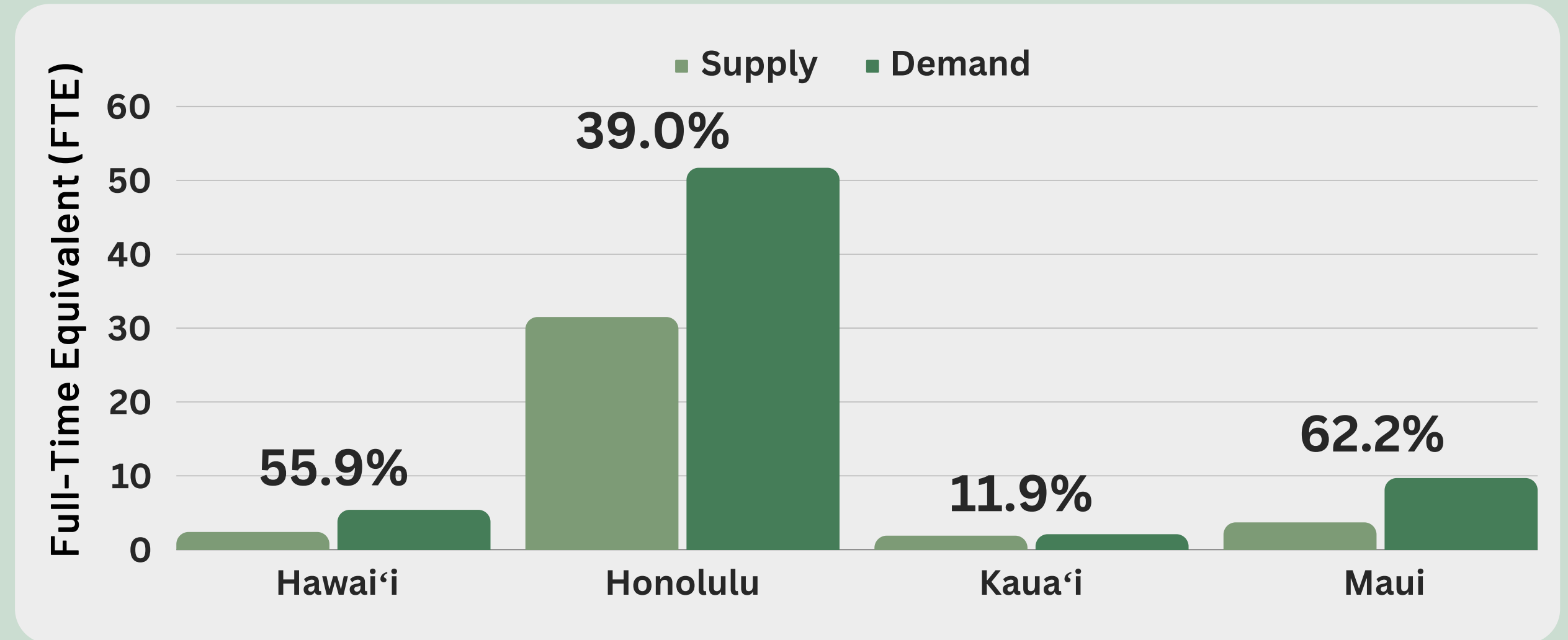


## Child/ Adolescent Psych Shortages per County (2023)

Statewide Supply  
**39.4 FTE**

Statewide Demand  
**68.9 FTE**

% Shortage  
**42.8%**



University of Hawai'i System Report to the 2023 Legislature, Annual Report on Findings from the Hawai'i Physician Workforce Assessment Project, December 2022.





# TRAINING



**Project ECHO (Extension for Community Healthcare Outcomes) is an innovative guided practice model that builds workforce capacity while improving patient access to specialty health care in rural communities.**

**Project ECHO leverages technology that connects a diverse group of specialists with front-line clinicians to provide the knowledge and support they need to manage patients with complex conditions.**

**PMHCA has partnered with Project ECHO to provide training on mental health-related topics to pediatric providers.**

## **Topics for past trainings**

- **Integrated Behavioral Health in Primary Care**
- **ADHD**
- **Pediatric Anxiety and Depression**
- **Post-Traumatic Stress**
- **Infant Mental Health**
- **Mental Health Needs of Sexual and Gender Minority Children and Adolescents**
- **Addressing Trauma in Caregivers**
- **Setting Up and Maintaining Integrated Behavioral Health in the Primary Care Office**
- **Disruptive Behavioral and Parent Management**



# PHYSICIAN CONSULTATION WARMLINE



The physician consultation warmline functions as an added support in conjunction to the trainings in handling the mental health needs of children and adolescents. Pediatricians whose patient may be dealing with mental health concerns will be able to contact and call a Child Adolescent Psychiatrist to seek advice regarding diagnosis, medication management, second opinion, etc.

## *Warmline goals:*

1) Have all calls answered within the business day: goal is immediate or within 30 minutes

2) Follow up all calls with a consult letter within 48 hours: includes summary of call and recommendations

3) \*Coordinated Intake and Referral System\*

4) Support all pediatric providers statewide + Pacific Basin

## *Staffing of warmline :*

Up to 1-1.5 FTE Child Psychiatrist  
1 FTE split among multiple child psychiatrist

1 FTE Care Coordinator/ Social Worker

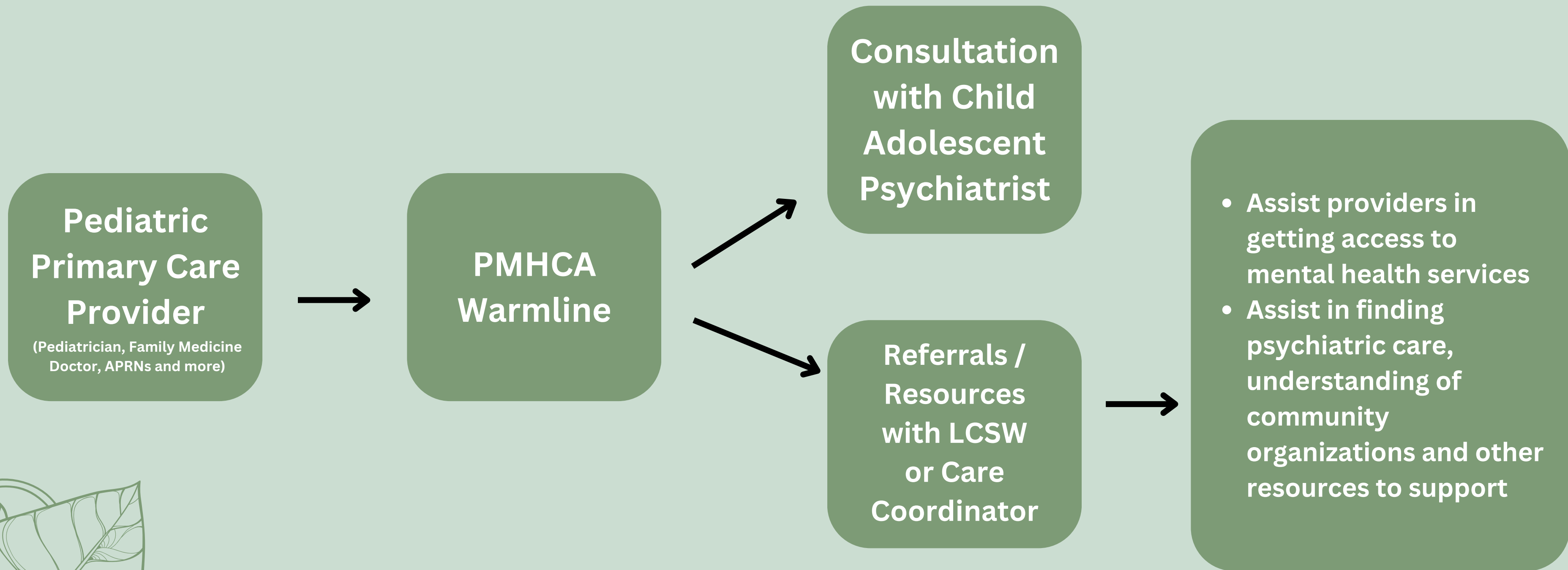
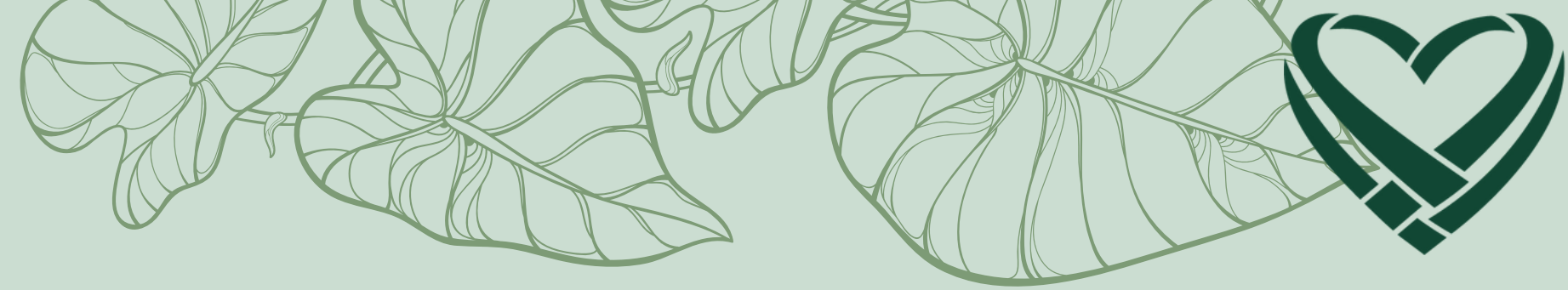
Part-time Psychologist or Specialized Psych

Call hours: Regular Business hours (8 am-5 pm)





# COORDINATED INTAKE AND REFERRAL SYSTEM





# DATA COLLECTION/PERFORMANCE MEASUREMENT

## Performance Reports:

- # of providers who have received training in prevention or mental health promotion
- # of providers who called the warmline
- # of encounters per practice
- # of patients who are medicaid/CHIP





# MODEL IN PRACTICE AND SUCCESSES



## Massachusetts Child Psychiatry Access Program (MCPAP)



- Founding state of the child access psychiatry / PMHCA
- Established in 2004
- HRSA Funding partially

### In CY 2022:

- 66% of all MA practices used MCPAP
- 17 encounters per practice
- 68% of episodes of care managed with specialty
- 67% of providers with MCPAP comfortable treating anxiety
- 67% of providers with MCPAP comfortable treating depression
- 77% of providers with MCPAP comfortable treating ADHD

## Seattle Pediatric Access Line (PAL)



- Established in 2008
- HRSA Funding partially

### As of 2023:

- Established a joint support line to Wyoming and Alaska
- 95% calls live answered
- >85% of calls direct transfer to child psychiatrist
- Receives ~ 150 calls / month
- In addition to PAL, established other projects to support BH in children/adolescents such as Medication Review Program, Referral Service for Parents, Crisis Consultation (ER), PAL for Schools (school counselors get training and discussion with psychologist team)



# UPCOMING GOALS/ NEXT STEPS FOR PMHCA



**Release RFI / RFP to contract for warmline**

**Offer more trainings in various modalities to meet needs of Pediatric Primary Care Providers**

**Conduct Environmental Scan / Systems + Program Scan to gain idea of the available mental health resources and understand the mental health landscape**

**Continue to regularly convene Pediatric Mental Health Partners for cross collaboration among various programs**





# FOR MORE INFORMATION

## **For Project LAUNCH:**

Dept. of Health, Children with Special Health Needs Branch

- Keiko Nitta, [keiko.nitta@doh.hawaii.gov](mailto:keiko.nitta@doh.hawaii.gov) or (808) 220-8235

## **For Pediatric Mental Health Care Access (PMHCA):**

Dept. of Health, Family Health Services Division:

- Renzymeir Baloran, [renzymeir.baloran@doh.hawaii.gov](mailto:renzymeir.baloran@doh.hawaii.gov) or (808) 733-9018
- Eden Sun, [eden.sun@doh.hawaii.gov](mailto:eden.sun@doh.hawaii.gov) or (808)733-8364

## **For Family Health Services Division:**

- Matthew Shim, Chief, [matthew.shim@doh.hawaii.gov](mailto:matthew.shim@doh.hawaii.gov) or (808)586-4122

