

# PEDIATRIC MENTAL HEALTH CARE ACCESS (PMHCA) GRANT



The Hawai'i State Department of Health's Family Health Services Division (DOH FHSD) received the PMHCA grant to develop a model to support pediatric providers working with families of children and youth ages 0-21. Given the shortage of behavioral health providers and limited service options available for families, DOH FHSD is working to promote behavioral health integration into pediatric primary care settings.

## PMHCA GOALS

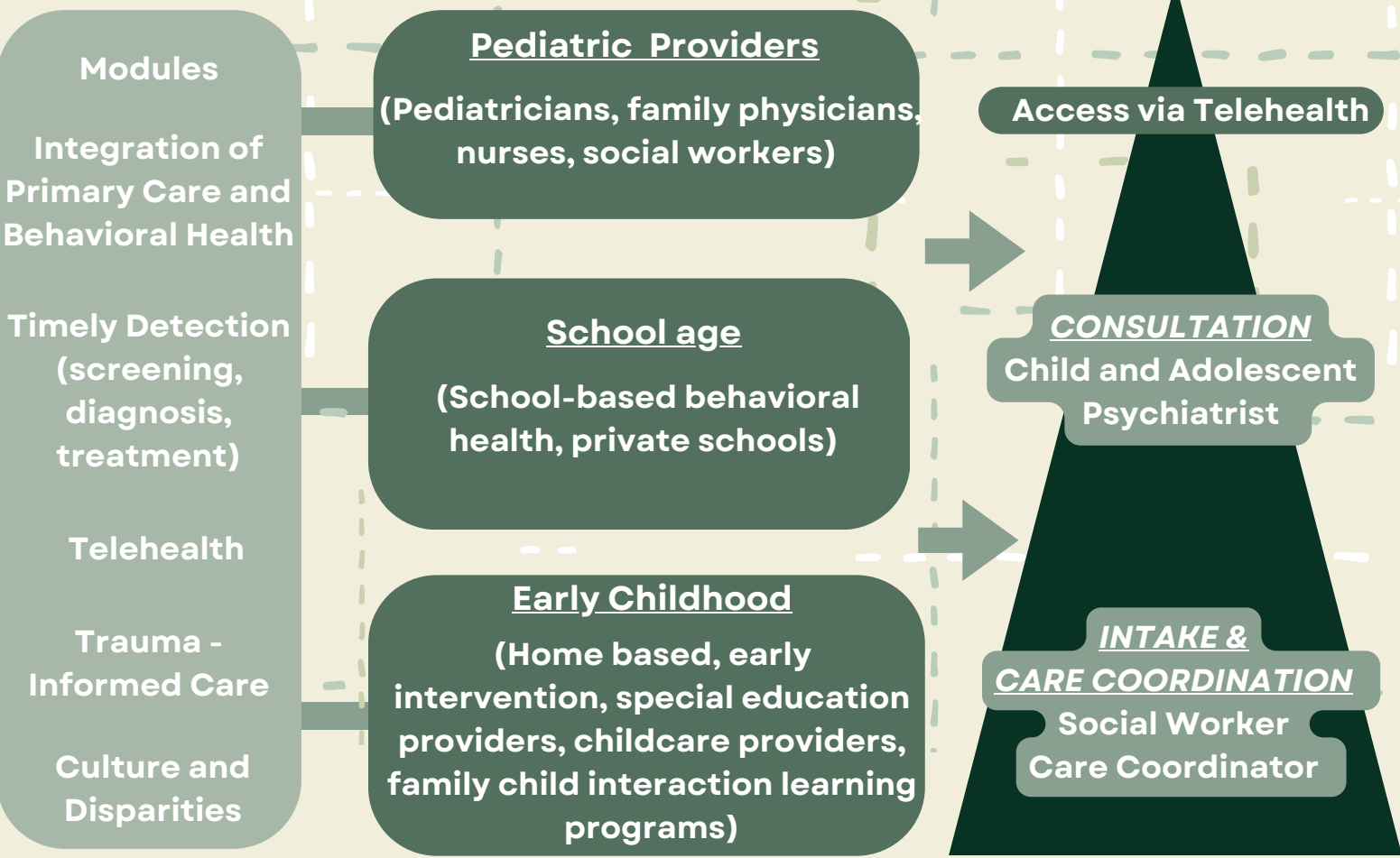
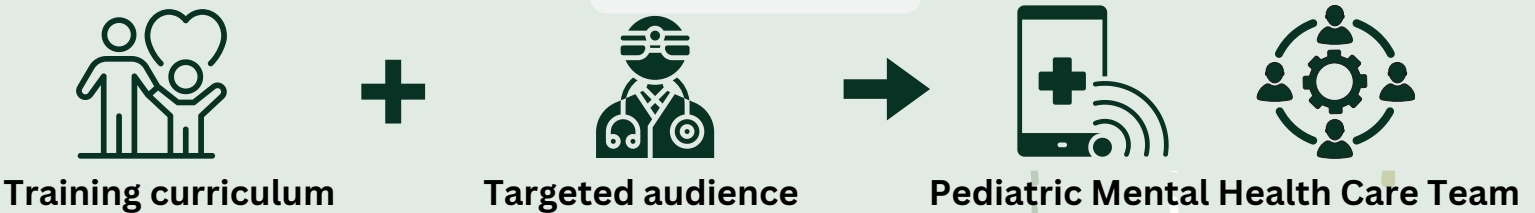
Increase a network of Pediatric Mental Health Teams

Provide trainings on early identification, diagnosis, and treatment for child and youth mental health

Distribute information on timely mental health detection and supports available

Increase access to mental health prevention and support in rural and underserved communities

## PMHCA MODEL



*This resource is supported by the Health Resources and Services Administration (HRSA) of the U.S. Department of Health and Human Services (HHS) as part of an award totaling \$445,000. The contents are those of the author(s) and do not necessarily represent the official views of, nor an endorsement, by HRSA, HHS, or the U.S. Government. For more information, please visit HRSA.gov.*

For more information, please contact Renzy:  
 Renzymeir.baloran@doh.hawaii.gov or (808) 733-9018