



HAWAII STATE

Department of Education

Fiscal Biennium 2022-23 Budget Briefing Testimony

House Committee on Education

Tuesday, January 26, 2021, 2:00 p.m.

House Committee on Finance

Wednesday, January 27, 2021, 2:00 p.m.

Dr. Christina M. Kishimoto

Superintendent





SECTION

01

Overview



Overview

Vision & Mission

Hawai'i's public schools are a diverse portfolio of high-quality school models aligned with community context, values, history and economic growth opportunities through leadership empowerment, student voice and teacher collaboration.

The mission of the Hawai'i State Department of Education is to serve our community by ensuring equity, empowerment and excellence in education for all students.

Briefing Progress

Overview

Federal
Funds

Budget
Review

Legislative
Priorities





Overview

Who We Serve

294 PUBLIC SCHOOLS

- 257 HIDOE, 37 charter
- 174 elementary, 42 middle, 34 high, 44 mixed grades

42,000 EMPLOYEES

- 22,000 salaried
- 20,000 part-time/casual

174,704 STUDENTS

- 162,491 in HIDOE schools
- 12,213 in charter schools

Economic Disadvantage

52% of total enrollment

Special Education & Needs

13% of total enrollment

English Language Learners

9% of total enrollment

Military Impacted

7% of total enrollment

Briefing Progress

Overview

Federal Funds

Budget Review

Legislative Priorities

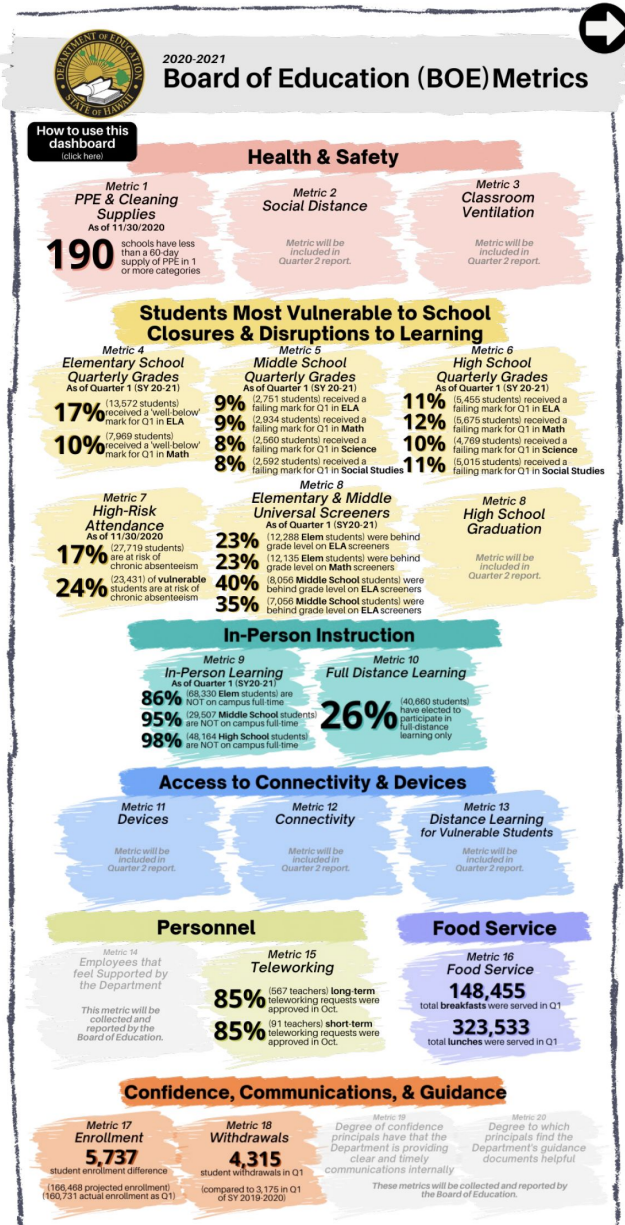


Overview

Performance & Accountability Metrics

- New HIDEOE interactive data dashboard
- Board-adopted in Oct 2020
- 17 metrics
- Tracks performance, safety, resources, vulnerabilities

Access the dashboard online at bit.ly/RTLmetrics



Briefing Progress

Overview

Federal Funds

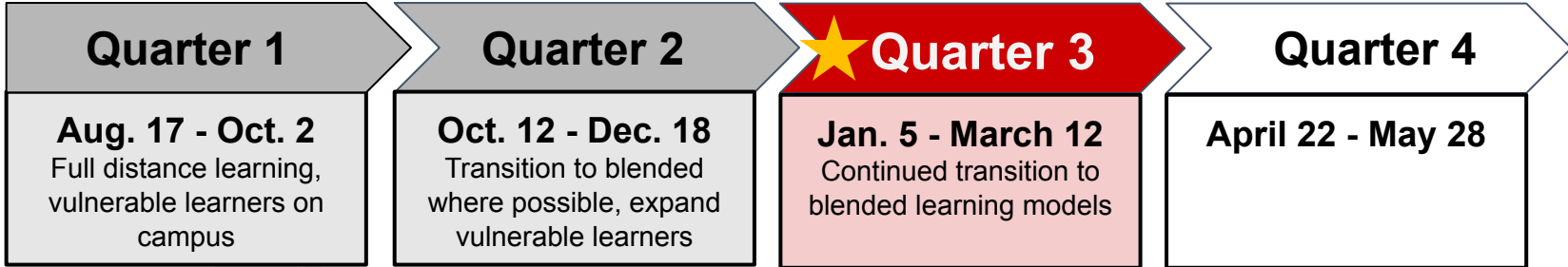
Budget Review

Legislative Priorities



Overview

Operating During the Pandemic



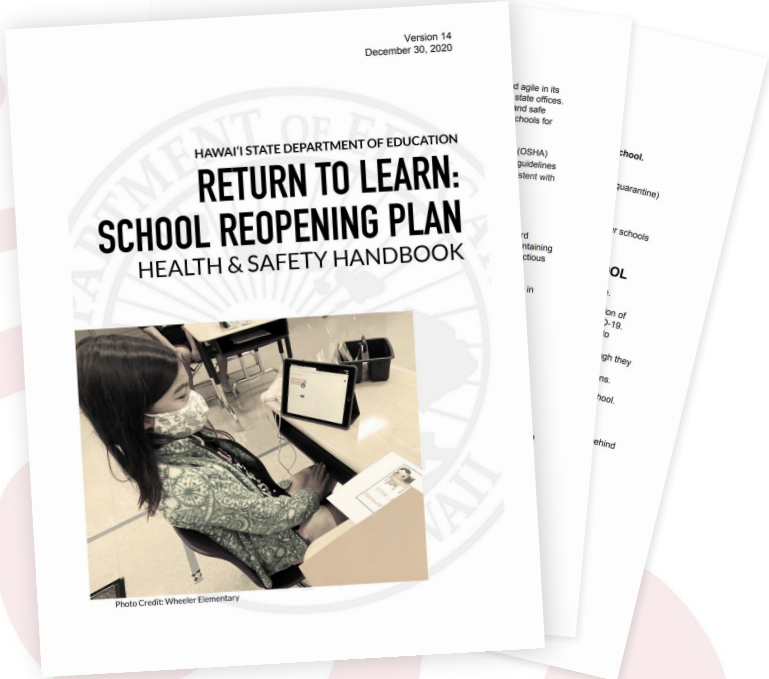
Briefing Progress

Overview

Federal Funds

Budget Review

Legislative Priorities





SECTION

02

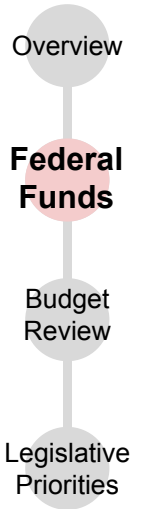
Federal Funds



Federal Funds

Legal Authority	Grant Title	CFDA #	% Change FFY20 to 21	FFY20 (millions)	FFY21 (millions)*
ESSA Title I	Ed. for the Disadvantaged	84.010	1.39%	16,310	16,537
ESSA Title II	Supporting Effective Instruction	84.367	0.52%	2,132	2,143
ESSA Title III	Eng. Language Acquisition	84.365	TBD	787	TBD
ESSA Title IV-Pt. A	Student Support & Academic Enrichment Grants	84.424	0.83%	1,210	1,220
ESSA Title IV-Pt. B	21st Century Community Learning Ctrs.	84.287	TBD	1,250	TBD
ESSA Title VIII	Impact Aid	84.041	TBD	1,486	TBD
Individuals with Disabilities Education Act	Special Education State Grants (Part B-611)	84.027	1.36%	12,764	12,937
Perkins Career & Technical Education Improvement Act	State Grants	84.048	4.05%	1,283	1,335
Workforce Innovation & Opportunity Act (WIOA) Title II	Adult Basic & Literacy Education State Grants	84.002	TBD	657	TBD

Briefing Progress



Source: FFIS (Federal Fund Information for States), the State Office of Federal Awards Management, and the Office of Fiscal Services.

*Not all information available for FFY 21 as of January 2021; awaiting full breakdown.



Federal Funds

CARES Federal Relief Aid

Monthly CARES status reports published at bit.ly/HIDOE-cares-act

Briefing Progress

Federal Funding Priority Areas

Summer Learning	Distance Learning Training
Career & Technical Education	Impact Services
Learning Devices	Equitable Services
Connectivity	Health & Safety
Distance Learning Platform	Transition Safety Nets

OFFICE OF Fiscal Services

CARES Act Grant Title: Elementary and Secondary School Emergency Relief (ESSER)
Hawaii Grant Award: \$43,388,229
Issue Date: Sept. 30, 2022

Program	Description	Total Allocation	Total Expenditures	Total Encumbrance	Total PO Settings*	Balance
3600 - CARES ESSER Summer Learning Program	To provide programs for credit recovery, e-school expansion for advanced learning and credit awareness, K-2 literacy competencies, iMROVES, UH courses, and Summer Learning hubs.	\$10,339,600	\$5,566,363	\$166,483	\$3,878	\$4,603,076
3601 - CARES ESSER Learning Devices	To enable student access to devices (e.g., laptops, tablets, etc.)	\$16,964,381	\$2,226,236	\$13,844,255	\$13	\$899,877
3602 - CARES ESSER CTE	To support CTE aligned student internships in DOE state offices.	\$13,380	\$21,094	\$0	\$0	-\$8,214
3603 - CARES ESSER Connectivity	To provide support through broadband hotspots and devices with built-in connectivity for students/off use and deployment of mobile Wi-Fi hubs to increase connectivity.	\$9,651,159	\$791,219	\$6,691,019	\$0	\$2,168,921
3604 - CARES ESSER Learning Platform	To support schools with distance learning needs by providing a based curriculum, blended learning, and online standards-based learning platform system to support schools with online standards-based learning, blended learning, and online peer collaboration. The program will provide training, resources and access to a Blackboard LMS that has been used for distance learning as part of the state's E-School program and will be utilized as the system for this program.	\$500,000	\$288,812	\$0	\$0	\$211,188
3605 - CARES ESSER Distance Learning PD	To support schools with distance learning needs. The program will provide training, resources and access to a robust learning management system for teachers to utilize.	\$611,550	\$24,733	\$33,701	\$0	\$753,117
3609 - CARES ESSER Transition Safety Nets	To enable schools/offices to provide resources to support families, students and communities with differentiated needs for transition to postsecondary.	\$1,876,231	\$0	\$1,726,231	\$0	\$150,000
3610 - CARES ESSER SPED Cateback for IEPs	To complete outstanding/outstanding student evaluations and to conduct meetings for students with disabilities during summer 2020 (late August).	\$2,095,800	\$47,997	\$58,662	\$59	\$1,929,082
3611 - CARES ESSER Equitable Services	To allow the Department to provide resources to private schools consistent with the requirements of the CARES Act.	\$2,111,000	\$0	\$235,068	\$0	\$1,875,932
3612 - CARES ESSER Staff Training	To provide staff training to implement solutions to COVID-19 related issues and problems.	\$1,600,000	\$0	\$0	\$0	\$1,600,000
		\$45,923,191	\$8,880,954	\$22,755,430	\$3,750	\$14,182,978

*PO savings: Balances remaining in the prior fiscal year after encumbrance has been closed out. Amounts are pending reallocation.

Program	Description	Total Allocation	Total Expenditures	Total Encumbrance	Total PO Settings*
Distance Learning Equipment	To acquire equipment related to Distance Learning. Examples include hotspots and cell devices.	\$31,000,000	\$0	\$31,000,000	\$0

*PO savings: Balances remaining in the prior fiscal year after encumbrance has been closed out. Amounts are pending reallocation.

As of Sept. 30, 2020
Source: Hawaii State Department of Education, Office of Fiscal Services

Overview

Federal Funds

Budget Review

Legislative Priorities

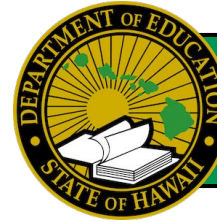




Federal Relief Aid

ESSER II Funding Priorities

- Current year shortfall areas
- 10% program review reductions
- Newly identified COVID-19 response measures (learning loss mitigation, health & safety)
- Charter schools' equitable share



Allocation to HDOE:
\$183,595,211

FY 2021	
Purpose	Recommendation
Teacher Differentials Pilot Program *	\$32.5 million
Health & Safety *	\$3 million
Charter Schools *	\$8.99 million
TOTAL	\$44,491,457

* Estimated

FY 2022	
Purpose	Recommendation
Off-Set the 10% Program Review Cuts	\$53.95 million
Learning Loss Mitigation *	\$53 million
Summer Learning *	\$9.65 million
Technology *	\$7.5 million
Health & Safety *	\$15 million
TOTAL	\$139,103,754
TOTAL (FY 2021 & 2022)	\$183,595,211

Recommendations pending Board approval.



SECTION

03

Budget Review



Budget Review

As part of the state's budget development process, departments were asked to:

- Identify highest and lowest priority program functions and activities.
- Propose budget adjustments at the levels of 10%, 15% and 20% for FY 2022 and 2023.
- Identify programs, functions, activities for possible elimination; programs for possible consolidation; cost savings for efficiencies, service scope reductions, or changes in means of financing to meet targets.

HIDOE BUDGET
2021-23 PROGRAM REVIEW & BUDGET DEVELOPMENT

SUPERINTENDENT DR. CHRISTINA KISHIMOTO
As of Oct. 23, 2020

257 DOE SCHOOLS
15 COMPLEX AREAS
170,000 STUDENTS
42,000 22K SALARIED 20K PT/CASUAL

WHAT'S BEING ASKED OF THE HIDOE

The state is faced with significant losses in general fund tax revenues as Hawaii's economy struggles to recover and reopen. As part of the state's budget development process, state departments are asked to:

- Identify highest and lowest priority program functions and activities.
- Propose budget adjustments at the levels of 10%, 15% and 20% for fiscal years 2022 and 2023. Identify programs, functions and/or activities for possible elimination; programs for possible consolidation; and cost savings for efficiencies, service scope reductions, or changes in means of financing to meet target reductions.

Earlier this year when the Legislature sought possible reductions to meet shortfalls for the fiscal year ending June 30, 2020, the HIDOE proposed one-time, non-recurring reductions, totaling \$100.2 million in an effort to prevent across-the-board cuts. The entire amount was imposed, and has since been carried over as a recurring reduction to the base budget.

(\$100,200,000)
FY 2021 imposed reductions

\$1,652,482,835
FY 2021 general fund base budget as adjusted for program review

B&F reduction scenarios starting FY 2022

- 10% (\$165,248,280)
- 15% (\$247,872,420)
- 20% (\$330,496,560)

GUIDING PRINCIPLES

- Remain viable, adaptable and strategic
- Protect core mission of teaching and learning with equity of access lens
- Leverage federal and private dollars toward core mission
- Modernize systems and practices to improve efficiencies and focus

EQUITY OF ACCESS

Ensuring access to a quality education in an ever-changing environment will require the Department to modernize the way we operate while also making investments to reinvent how we conduct business in the current educational landscape.

HOW THE HIDOE IS RESPONDING

Under Superintendent Dr. Christina Kishimoto, the Department will undertake extensive internal and community engagement to support thoughtful deliberation toward determining what programs and services to reduce, consolidate or eliminate in ways that best allow the Department to remain student-centered in all decision-making and focused on our core mission to ensure all students reach their aspirations.

	SEPT	OCT	NOV	DEC
HIDOE	Establish program review process and timeline Assemble budget steering committee and ad hoc subcommittees	Subcommittees convene to identify essential functions and systems eyed for modernization and possible reduction Budget steering committee reviews recommendations and engages stakeholder feedback teams	Finalize program review report Program review report shared with stakeholders	Schools prepare financial plans for School Year 2021-22 Planning for 2021 legislative session begins
STATE			Governor makes final executive budget decisions	Governor submits proposed executive budget to the Legislature <small>*Subject to change</small>

Briefing Progress

Overview

Federal Funds

Budget Review

Legislative Priorities



Budget Review

Potential Budget Reductions

Direct supports to schools	Starting Base Budget FY 22 & FY 23	Maintaining of (-\$100.2M) Reduction *	10% Program Review Reduction	Less Furlough Labor Savings (-9.23%) **	Total Reductions	Revised FY 22 & FY 23 Base Budget	Reduction from FY 21 Base
School-based Budgeting	\$1,061,261,370	(\$35,707,233)	(\$99,966,277)	(\$86,284,855)	(\$222,318,392)	\$838,942,978	(21%)
Special Education	\$406,086,573	(\$4,431,663)	(\$32,255,281)	(\$30,454,829)	(\$67,214,538)	\$338,872,035	(17%)
School Support	\$201,886,583	(\$55,877,341)	(\$20,364,175)	(\$4,055,334)	(\$80,296,849)	\$121,589,734	(40%)
School Community Services	\$4,346,464	(\$115,374)	(\$38,393)	(\$328,274)	(\$482,041)	\$3,864,423	(11%)
Instructional Support	\$61,707,326	(\$1,731,083)	(\$6,390,023)	(\$3,885,534)	(\$11,932,689)	\$49,774,637	(19%)
State Administration	\$55,737,378	(\$2,337,306)	(\$5,239,467)	(\$3,468,433)	(\$10,686,366)	\$45,051,012	(19%)
TOTAL	\$1,792,525,694	(\$100,200,000)	(\$164,253,616)	(\$128,477,259)	(\$392,930,875)	\$1,399,594,819	(22%)

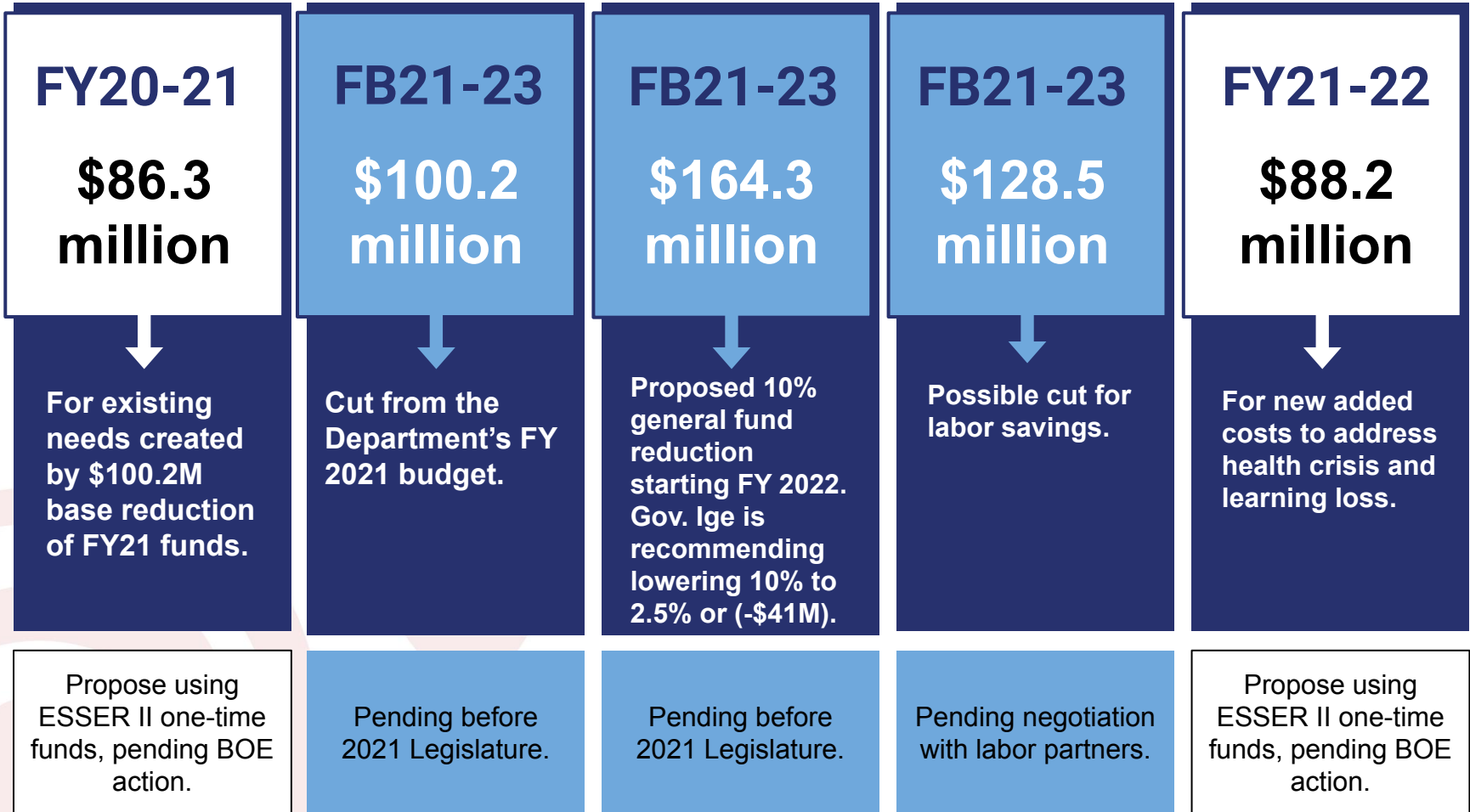
* Informed Oct. 2020

** Estimated



Budget Shortfall

FY 21, 22 and 23 Budget Challenges



Total shortfall as of Jan. 25: \$270M*

**Columns 2 + 3 (adjusted for Gov. 1/21/21 recommendation) + 4*



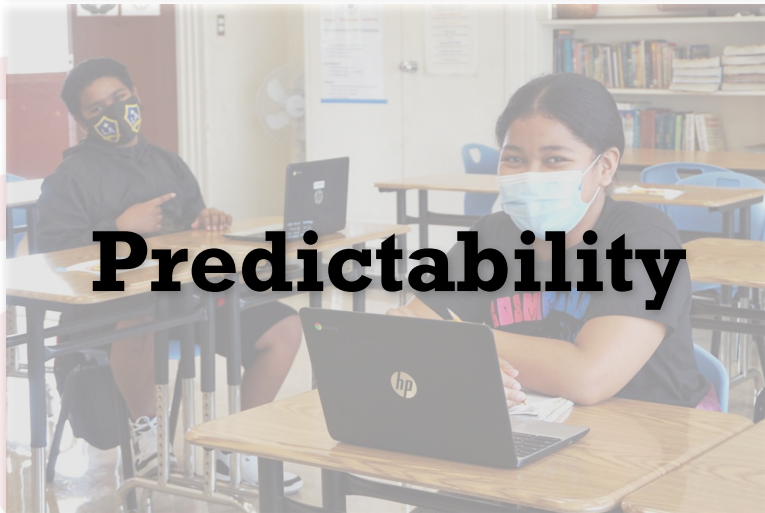
SECTION

04

Legislative Priorities



Legislative Priorities



Briefing Progress

Overview

Federal
Funds

Budget
Review

**Legislative
Priorities**



2021 Legislative Priorities

- Seeks to protect the Dept's capacity and progress
- Focuses on student learning success
- Addresses learning loss mitigation
- Protects the rights of ALL students to quality education
- Seeks improvement of Hawaii's education funding formula

HAWAII STATE DEPARTMENT OF EDUCATION
2021 SESSION LEGISLATIVE PRIORITIES
 Superintendent Dr. Christina Kishimoto

As of January 2021

294 DOE & CHARTER SCHOOLS
 15 COMPLEX AREAS
 175,000 STUDENTS
 42,000 22K SALARIED 20K PT/CASUAL

- 1. RESTORE \$100.2 MILLION TO HIDEO BUDGET**
 Amid dual health and budget crises, the Department sustained a \$100.2 million reduction to its base budget for the 2020-21 school year through legislative action (Act 9, SLH 2020). This presumed one-time reduction was converted into a permanent reduction during the Executive Budget development process. Because the Department understood the \$100.2 million cut would be non-recurring, one-time cuts more than \$30 million in cuts to school-based budgeting and \$56 million in cuts to school support this year. The Department has expressed concerns that a significant cut to the base budget has been made absent a public hearing and vetting process.
- 2. RETAIN & MAXIMIZE FEDERAL RELIEF FUNDS TO STABILIZE PUBLIC SCHOOLS**
 Federal education relief funds are intended to address the ongoing COVID-19 pandemic and learning losses students are experiencing due to the disruption it has caused. The relief funds guidance comes with an assumption of a maintenance of effort. The pandemic has created new costs around non-instructional matters as well. We recognize the relief funds cannot address all of these needs. Even with federal assistance, the Department has \$83 million in projected shortfalls for fiscal year 2021, and \$393 million in projected shortfalls in fiscal 2022. Any new federal relief aid will continue to be prioritized for teaching and learning, including learning loss mitigation. Support from the Legislature is needed for the balance of the shortfall.
- 3. PROVIDE FISCAL PREDICTABILITY AND RELIABILITY FOR PUBLIC EDUCATION**
 In order for the Department to effectively meet its obligations, it is incumbent upon state leaders to work together to secure a predictable, equitable, and stable source of K-12 education revenues no matter the circumstances facing the state. Sustaining funding levels will prevent drastic educational inequities among students and help support strategic planning to meet student needs. The Department is supporting the establishment of what is known as a "maintenance of effort" commitment. This approach — which exists nationally in various forms — remains constant from year to year. The Department will continue to work diligently to ensure its ability to meet its core mission of teaching and learning and sustaining essential functions and infrastructure to ensure student achievement, even during periods of economic decline. The Department believes access to quality public education must be protected for all students.

Direct supports to schools	Starting Base Budget FY 22 & FY 23	Maintaining of (-\$100.2M) Reduction *	10% Program Review Reduction	Less Furlough Labor Savings (-8.23%) **	Total Reductions	Net Total FY 22 & FY 23 Base Budget	Reduction from FY 21 Base
School-based Budgeting	\$1,061,261,370	(\$36,707,233)	(\$100,326,304)	(\$66,284,856)	(\$222,318,392)	\$838,942,978	(21%)
Special Education	\$406,086,573	(\$4,431,063)	(\$32,328,046)	(\$30,454,829)	(\$67,214,538)	\$338,872,035	(17%)
School Support	\$201,886,583	(\$55,877,241)	(\$29,364,174)	(\$4,095,334)	(\$89,296,849)	\$121,589,734	(40%)
School Community Services	\$4,346,464	(\$115,374)	(\$38,392)	(\$328,274)	(\$482,041)	\$3,864,423	(11%)
Instructional Support	\$61,707,326	(\$1,731,083)	(\$4,316,072)	(\$3,895,534)	(\$11,942,689)	\$49,764,637	(19%)
State Administration	\$55,737,378	(\$2,337,306)	(\$4,880,627)	(\$3,468,433)	(\$10,686,366)	\$45,051,012	(19%)
TOTAL	\$1,792,528,684	(\$100,200,000)	(\$164,253,616)	(\$128,477,259)	(\$392,930,871)	\$1,399,597,813	(22%)

* Informed Oct. 2020
 ** Estimated

Briefing Progress

Overview

Federal Funds

Budget Review

Legislative Priorities



MAHALO FOR YOUR CONTINUED SUPPORT OF PUBLIC EDUCATION!



HawaiiPublicSchools.org





SECTION

05

Testimony Tables

[http://www.hawaiipublicschools.org/DOE%20Forms/budget/
HIDOE-21-23-budget-legislative-testimony-tables.pdf](http://www.hawaiipublicschools.org/DOE%20Forms/budget/HIDOE-21-23-budget-legislative-testimony-tables.pdf)



SECTION

06

Appendix

<http://www.hawaiipublicschools.org/DOE%20Forms/budget/FY22-23%20WAM-FIN%20Budget%20Briefing%20Appendix.pdf>

<u>Division</u>	<u>Description of Function</u>	<u>Activities</u>	<u>Prog ID(s)</u>	<u>Dept-Wide Priority</u>	<u>Statutory Reference</u>
n/a	Student Success - All students demonstrate they are on a path toward success in college, career, and citizenship.	Classroom Instruction	EDN 100 EDN 500	H	HRS §302A (multiple sections)
		Categorical Programs - i.e. At-Risk Programs, Student Activities, Athletics, Drivers Education, JROTC, Hawaiian Programs	EDN 100	H	
		Student Assessment	EDN 200	H	
		Special Education Services	EDN 150	H	
		Community School for Adults	EDN 500	H	
		Early Learning	EDN 700	H	HRS §302L (multiple sections)
n/a	Staff Success - Public schools have a high-performing culture where employees have the training, support, and professional development to contribute effectively to student success.	Professional Development	EDN 100 EDN 150 EDN 200 EDN 300 EDN 400 EDN 500	H	HRS §302A (multiple sections)
		Sabbatical Leave Programs	EDN 200	H	
		Training and Retention Program	EDN 150	H	
		Complex Area Support	EDN 200	H	
		Curriculum, Instruction, and Student Support	EDN 150 EDN 200	H	
n/a	Successful Systems of Support - The system and culture of public education work to effectively organize financial, human, and community resources in support of student success.	Executive Leadership - Board of Education and Office of the Superintendent	EDN 300	H	HRS §302A (multiple sections)
		Fiscal Services - Budgeting, Accounting, and Procurement	EDN 300	H	
		Human Resources - Personnel Management, Personnel Development, and Workers Compensation	EDN 300	H	
		Information Technology - Network Support, Data, and System Services	EDN 300	H	
		School Facilities Support - R&M, Transportation, Utilities, Food Services	EDN 400	H	
H = High Priority					

Fiscal Year 2022					
Budget Acts Appropriation*	Reductions**	Additions***	Emergency	Total FY22****	MOF
\$ 1,659,292,670	\$ (165,753,616)	\$ 33,033,024	\$ 62,421,250	\$ 1,588,993,328	A
\$ 53,690,411	-	\$ 89,156		\$ 53,779,567	B
\$ 260,699,375	-	-		\$ 260,699,375	N
\$ 9,553,793	-	-		\$ 9,553,793	P
\$ 150,000	-	-		\$ 150,000	R
\$ 15,650,000	-	-		\$ 15,650,000	T
\$ 7,495,605	-	-		\$ 7,495,605	U
\$ 25,682,326	-	\$ 58,756		\$ 25,741,082	W
\$ 2,032,214,180	\$ (165,753,616)	\$ 33,180,936	\$ 62,421,250	\$ 1,962,062,750	Total
Fiscal Year 2023					
Budget Acts Appropriation*	Reductions**	Additions***	Emergency	Total FY23****	MOF
\$ 1,659,292,670	\$ (165,753,616)	\$ 33,033,024	\$ 62,421,250	\$ 1,588,993,328	A
\$ 53,690,411	-	\$ 89,156		\$ 53,779,567	B
\$ 260,699,375	-	-		\$ 260,699,375	N
\$ 9,553,793	-	-		\$ 9,553,793	P
\$ 150,000	-	-		\$ 150,000	R
\$ 15,650,000	-	-		\$ 15,650,000	T
\$ 7,495,605	-	-		\$ 7,495,605	U
\$ 25,682,326	-	\$ 58,756		\$ 25,741,082	W
\$ 2,032,214,180	\$ (165,753,616)	\$ 33,180,936	\$ 62,421,250	\$ 1,962,062,750	Total
* Includes appropriation transfers pursuant to Section 44, Act 5, SLH 2019, as amended by Act 9, SLH 2020					
** Reductions includes non-recurring reductions (\$1.5m) & program review reductions					
*** Additions are for Collective Bargaining amounts per F.M. No 20-15, dated October 2, 2020					
**** Total excludes EDN700 (EOEL submitting seperately)					

Department of Education Program ID Totals

Table 3

Prog ID	Program Title	MOF	As budgeted (FY22)			As budgeted (FY23)			Governor's Submittal (FY22)*				Governor's Submittal (FY23)*			
			Pos (P)	Pos (T)	\$\$\$	Pos (P)	Pos (T)	\$\$\$	Pos (P)	Pos (T)	\$\$\$	Percent	Pos (P)	Pos (T)	\$\$\$	Percent
EDN100	SCHOOL-BASED BUDGETING	A	12,421.25	680.25	1,009,225,846	12,421.25	680.25	1,009,225,846	12,421.25	680.25	925,587,860	-8%	12,421.25	680.25	925,587,860	-8%
EDN100	SCHOOL-BASED BUDGETING	B	-	-	5,245,466	-	-	5,245,466	-	-	5,251,693	0%	-	-	5,251,693	0%
EDN100	SCHOOL-BASED BUDGETING	N	-	-	138,670,617	-	-	138,670,617	-	-	138,670,617	0%	-	-	138,670,617	0%
EDN100	SCHOOL-BASED BUDGETING	P	-	-	9,249,999	-	-	9,249,999	-	-	9,249,999	0%	-	-	9,249,999	0%
EDN100	SCHOOL-BASED BUDGETING	T	-	-	13,390,000	-	-	13,390,000	-	-	13,390,000	0%	-	-	13,390,000	0%
EDN100	SCHOOL-BASED BUDGETING	U	-	-	7,495,605	-	-	7,495,605	-	-	7,495,605	0%	-	-	7,495,605	0%
EDN100	SCHOOL-BASED BUDGETING	W	-	-	2,413,937	-	-	2,413,937	-	-	2,421,333	0%	-	-	2,421,333	0%
EDN150	SPECIAL EDUCATION AND STUDENT	A	5,240.50	1,228.25	390,993,161	5,240.50	1,228.25	390,993,161	5,238.50	1,227.25	369,399,629	-6%	5,238.50	1,227.25	369,399,629	-6%
EDN150	SPECIAL EDUCATION AND STUDENT	B	-	-	250,000	-	-	250,000	-	-	250,000	0%	-	-	250,000	0%
EDN150	SPECIAL EDUCATION AND STUDENT	N	2.00	33.00	52,164,701	2.00	33.00	52,164,701	2.00	33.00	52,164,701	0%	2.00	33.00	52,164,701	0%
EDN150	SPECIAL EDUCATION AND STUDENT	W	6.00	-	3,536,708	6.00	-	3,536,708	6.00	-	3,540,421	0%	6.00	-	3,540,421	0%
EDN200	INSTRUCTIONAL SUPPORT	A	409.00	83.00	59,188,730	409.00	83.00	59,188,730	407.00	79.00	53,586,220	-9%	407.00	79.00	53,586,220	-9%
EDN200	INSTRUCTIONAL SUPPORT	B	11.00	-	2,382,128	11.00	-	2,382,128	11.00	-	2,396,308	1%	11.00	-	2,396,308	1%
EDN200	INSTRUCTIONAL SUPPORT	N	-	2.00	500,000	-	2.00	500,000	-	2.00	500,000	0%	-	2.00	500,000	0%
EDN200	INSTRUCTIONAL SUPPORT	P	-	1.00	273,794	-	1.00	273,794	-	1.00	273,794	0%	-	1.00	273,794	0%
EDN300	STATE ADMINISTRATION	A	516.50	6.00	52,043,672	516.50	6.00	52,043,672	500.00	5.00	48,160,605	-7%	500.00	5.00	48,160,605	-7%
EDN300	STATE ADMINISTRATION	P	-	-	30,000	-	-	30,000	-	-	30,000	0%	-	-	30,000	0%
EDN400	SCHOOL SUPPORT	A	696.50	3.00	143,693,794	696.50	3.00	143,693,794	654.50	1.00	125,645,067	-13%	654.50	1.00	125,645,067	-13%
EDN400	SCHOOL SUPPORT	B	11.00	-	44,081,817	11.00	-	44,081,817	11.00	-	44,150,566	0%	11.00	-	44,150,566	0%
EDN400	SCHOOL SUPPORT	N	718.50	98.50	66,097,300	718.50	98.50	66,097,300	718.50	98.50	66,097,300	0%	718.50	98.50	66,097,300	0%
EDN400	SCHOOL SUPPORT	R	-	-	150,000	-	-	150,000	-	-	150,000	0%	-	-	150,000	0%
EDN400	SCHOOL SUPPORT	W	4.00	2.00	8,031,681	4.00	2.00	8,031,681	4.00	2.00	8,054,663	0%	4.00	2.00	8,054,663	0%
EDN500	SCHOOL COMMUNITY SERVICES	A	35.00	5.00	4,147,467	35.00	5.00	4,147,467	35.00	5.00	4,192,697	1%	35.00	5.00	4,192,697	1%
EDN500	SCHOOL COMMUNITY SERVICES	B	1.00	-	1,731,000	1.00	-	1,731,000	1.00	-	1,731,000	0%	1.00	-	1,731,000	0%
EDN500	SCHOOL COMMUNITY SERVICES	N	-	2.00	3,266,757	-	2.00	3,266,757	-	2.00	3,266,757	0%	-	2.00	3,266,757	0%
EDN500	SCHOOL COMMUNITY SERVICES	T	-	-	2,260,000	-	-	2,260,000	-	-	2,260,000	0%	-	-	2,260,000	0%
EDN500	SCHOOL COMMUNITY SERVICES	W	-	-	11,700,000	-	-	11,700,000	-	-	11,724,665	0%	-	-	11,724,665	0%
* Includes appropriation transfers pursuant to Section 44, Act 5, SLH 2019, as amended by Act 9, SLH 2020. Also excludes EDN700; EOEL reporting separately.																

Prog ID	Sub-Org	Description of Request	MOF	Initial Department Requests*						Budget and Finance Recommendations*						Governor's Decision*						
				FY22			FY23			FY22			FY23			FY22			FY23			
				Pos (P)	Pos (T)	\$\$\$	Pos (P)	Pos (T)	\$\$\$	Pos (P)	Pos (T)	\$\$\$	Pos (P)	Pos (T)	\$\$\$	Pos (P)	Pos (T)	\$\$\$	Pos (P)	Pos (T)	\$\$\$	
EDN100		DOE Program Review Reduction	A															(99,966,277)			(99,966,277)	
EDN150		DOE Program Review Reduction	A												(2.00)	(1.00)	(32,255,281)	(2.00)	(1.00)	(32,255,281)		
EDN200		DOE Program Review Reduction	A												(2.00)	(4.00)	(6,390,023)	(2.00)	(4.00)	(6,390,023)		
EDN300		DOE Program Review Reduction	A												(16.50)	(1.00)	(5,239,467)	(16.50)	(1.00)	(5,239,467)		
EDN400		DOE Program Review Reduction	A												(42.00)	(2.00)	(20,364,175)	(42.00)	(2.00)	(20,364,175)		
EDN500		DOE Program Review Reduction	A														(38,393)			(38,393)		
* Excludes EDN700; EOEL reporting seperately.																						

Prog ID	Sub-Org	Description of Reduction	Impact of Reduction	MOF	FY22*			FY23*			FY21
					Pos (P)	Pos (T)	\$\$\$\$	Pos (P)	Pos (T)	\$\$\$\$	Restriction (Y/N)
EDN100		DOE Program Review Reduction	The most significant concern regarding a reduction in the DOE’s operating budget is its capacity to continue to provide quality educational services to our students, including student support services. Financial adequacy to provide a variety of educational opportunities is vital to enabling students to fulfill their learning goals, responsibilities, and aspirations. Financial adequacy to provide an equitable, safe, modern, and innovative learning environment with quality systems of support is equally important. Additionally, the DOE must maintain accountability to federal and state mandates that protect students’ civil rights to quality public education. The DOE aims to protect its core mission of teaching and learning, to ensure equity for all students, and to sustain essential functions to ensure student achievement during this period of declining State revenues, while addressing learning loss resulting from COVID-19 health pandemic.	A			(99,966,277)			(99,966,277)	N
EDN150		DOE Program Review Reduction	See above in EDN100	A	(2.00)	(1.00)	(32,255,281)	(2.00)	(1.00)	(32,255,281)	N
EDN200		DOE Program Review Reduction	See above in EDN100	A	(2.00)	(4.00)	(6,390,023)	(2.00)	(4.00)	(6,390,023)	N
EDN300		DOE Program Review Reduction	See above in EDN100	A	(16.50)	(1.00)	(5,239,467)	(16.50)	(1.00)	(5,239,467)	N
EDN400		DOE Program Review Reduction	See above in EDN100	A	(42.00)	(2.00)	(20,364,175)	(42.00)	(2.00)	(20,364,175)	N
EDN500		DOE Program Review Reduction	See above in EDN100	A			(38,393)			(38,393)	N
EDN100	BX	Non-recurring amount for Early College Programs in High Schools, per Act 9, SLH 2020	Pursuant to Act 9, SLH 2020, \$1,500,000 in Early College funds have been deemed non-recurring for the upcoming biennium. Within the past few years, the Early College program has expanded and enrollment has increased due in large part to the financial support provided by the Legislature. A reduction in the program’s budget will limit access to Early College courses, significantly impacting students across the state, notably in rural and remote areas. Students who participate in the program rely upon these courses to earn high school and college credit (dual credit).	A			(1,500,000)			(1,500,000)	N
* Excludes EDN700; EOEL reporting separately.											

Department of Education Proposed Budget Additions

Table 6

Prog ID	Sub-Org	Addition	Prog ID	Dept-	Description of Addition	Justification	MOF	FY22*			FY23*		
								Pos (P)	Pos (T)	\$\$\$	Pos (P)	Pos (T)	\$\$\$
EDN100					Collective Bargaining	Finance Memorandum No. 20-15	A			17,828,291			17,828,291
EDN100					Collective Bargaining	Finance Memorandum No. 20-15	B			6,227			6,227
EDN100					Collective Bargaining	Finance Memorandum No. 20-15	W			7,396			7,396
EDN150					Collective Bargaining	Finance Memorandum No. 20-15	A			10,661,749			10,661,749
EDN150					Collective Bargaining	Finance Memorandum No. 20-15	W			3,713			3,713
EDN200					Collective Bargaining	Finance Memorandum No. 20-15	A			787,513			787,513
EDN200					Collective Bargaining	Finance Memorandum No. 20-15	B			14,180			14,180
EDN300					Collective Bargaining	Finance Memorandum No. 20-15	A			1,356,400			1,356,400
EDN400					Collective Bargaining	Finance Memorandum No. 20-15	A			2,315,448			2,315,448
EDN400					Collective Bargaining	Finance Memorandum No. 20-15	B			68,749			68,749
EDN400					Collective Bargaining	Finance Memorandum No. 20-15	W			22,982			22,982
EDN500					Collective Bargaining	Finance Memorandum No. 20-15	A			83,623			83,623
EDN500					Collective Bargaining	Finance Memorandum No. 20-15	W			24,665			24,665
* Excludes EDN700; EOEL reporting seperately.													

<u>Fiscal Year</u>	<u>Prog ID</u>	<u>Sub-Org</u>	<u>MOF</u>	<u>Budgeted by Dept</u>	<u>Restriction</u>	<u>Difference Between Budgeted & Restricted</u>	<u>Percent Difference</u>	<u>Impact</u>
2018			A		n/a			N/A
2019	200	Various	A	\$56,078,961	\$ 2,599,649	\$ 53,481,067	95.4%	With the reduction in the total appropriation on the various EDNs, programs had to scale back on the supports they provided to schools and the students that these schools educate.
2019	300	Various	A	\$51,708,109	\$ 2,482,706	\$ 49,223,648	95.2%	With the reduction in the total appropriation on the various EDNs, programs had to scale back on the supports they provided to schools and the students that these schools educate.
2020	200	Various	A	\$57,965,758	\$ 5,590,236	\$ 52,375,522	90.4%	With the reduction in the total appropriation on the various EDNs, programs had to scale back on the supports they provided to schools and the students that these schools educate.
2020	300	Various	A	\$53,287,938	\$ 5,040,606	\$ 48,247,332	90.5%	With the reduction in the total appropriation on the various EDNs, programs had to scale back on the supports they provided to schools and the students that these schools educate.
2021	200	Various	A	\$ 57,320,576	\$ 3,928,807	\$ 53,391,769	93.15%	With the uncertainty for programs as to what extent of their total appropriation will be available for personnel and programmatic needs, causing programs to scale back on the necessary supports to schools and the students that these schools educate, thus widening the achievement gap among regular students and those with needs.
2021	300	Various	A	\$ 52,043,672	\$ 3,680,864	\$ 48,362,808	92.93%	With the uncertainty for programs as to what extent of their total appropriation will be available for personnel and programmatic needs, causing programs to scale back on the necessary supports to schools and the students that these schools educate, thus widening the achievement gap among regular students and those with needs.

Department of Education Emergency Appropriation Requests

<u>Prog ID</u>	<u>Description of Request</u>	<u>Explanation of Request</u>	<u>MOF</u>	<u>Pos (P)</u>	<u>Pos (T)</u>	<u>\$\$\$</u>
EDN100	Workers' Compensation for DOE Employees	<p>The Workers' Compensation (WC) Program does not have sufficient funding to pay the cost of WC benefits as the cost has increased and Federal Funds are not expected for fiscal years (FY) 2020 and FY 2021. For FY 2019 the shortfall was \$9,495,556.</p> <p>The WC Unit continues to examine and implement responsible practices to contain WC costs. Nevertheless, the cost of mandated benefits and ancillary services continues to increase based on inflation and other factors such as the rising WC costs of medical treatments and medications, including repackaged drugs, physician dispensed pharmaceuticals, and topical medications, statutory increase in the maximum disability rate, and new legal requirements, all of which are outside Office of Talent Management's (OTM) control. These medical payments account for approximately 56% of the total WC payments. Therefore, additional funds are necessary to cover the increase in WC costs.</p>	A			5,000,000
EDN100	Teacher Differentials (SPED, Hard-to-Staff, Hawaiian Language Immersion)	<p>The Department believes that a labor shortage exists within the Department for licensed special education teachers, licensed teachers to teach in hard-to-staff geographical locations, and licensed Hawaii Language Immersion program teachers. The teacher shortage is a complex issue facing districts nationwide. Teacher incentives will play a key role in addressing equitable access to quality education for all students statewide.</p> <p>Annual amount per teacher SPED differential = \$10,000 @ 2,097 teachers Hard-to-Staff ranges from \$3,000 to \$8,000 @ 2,276 teachers Hawaiian Language Immersion = \$8,000 @153 teachers</p> <p>Totals for FY 2021: SPED differential total = \$20,298,750 Hard-to-Staff total = \$13,398,643 less \$4,100,000 already in base budget = \$9,298,643 Hawaiian Language Immersion total = \$1,143,857</p>	A			30,741,250

Department of Education Emergency Appropriation Requests

Prog ID	Description of Request	Explanation of Request	MOF	Pos (P)	Pos (T)	\$\$\$
EDN300	Converged Network Infrastructure	<p>Converged Infrastructure (CI) encompasses the equipment in schools (e.g., routers, switches, cables, etc.), as well as any equipment and support structures requiring delivery of bandwidth and applications to DOE schools (e.g., bell system, mass messaging, local area network (LAN)). Through joint efforts, OFO provided their expertise in construction, contracts, and R&M projects; and OITS provided their expertise in technology and networks. As a result of their joint efforts, DOE schools were upgraded to current technologies by leveraging Race to the Top (RTTT), DOE CIP R&M, and E-Rate funds.</p> <p>This request is to continue annual funding for the maintenance of the department's existing converged infrastructure/network. Funds are used to cover equipment warranties, licenses to use the hardware/software, as well as ensure firmware upgrades on hardware and guaranteed software/hardware security patches and tech support. This will ensure that the network infrastructure/equipment are kept up-to-date, secure, and functioning at optimal levels to provide the best and safest online experience for the schools.</p> <p>These now classified operational costs enable the following specific technology services and functions that allow DOE teachers and students to access online resources, course work and applications as part of their daily instructional and academic needs. These costs ensure the DOE can deliver critical technology services to all our students, teachers and staff. The failure of any of these services directly impacts the DOE's daily operations. In this pandemic time of COVID-19, the Department's reliance on these technology services have increased as part of the DOE's solution to distance learning, telework and social distancing mandates.</p> <p>Critical technology services supported by Converged Infrastructure Operational funding:</p> <ol style="list-style-type: none"> 1. Secure Internet connectivity to all DOE schools and offices 2. Access to Instructional and Business applications such as G Suite for Education, Webex and the DOE's Student Information System, Infinite Campus. 3. Telephones services for schools and state offices. 4. Program bell and paging services. 5. Supports DOE hosted business applications for eHR (Human resources), FMS, Budget and their databases. 6. Local area and wide area networks for schools and offices that enable secure and responsive wired and wireless connections. 7. Identity management for the secure authentication of cloud and hosted applications. 	A			5,000,000
EDN300	Recurring Licensing and Annual Costs Associated with the New Financial Management System (FMS)	<p>The department is in need of modernizing its current Financial Management System (FMS), a system that has significantly limited the Department's processes and responsiveness. The current legacy FMS lacks functionality, modern day capabilities, and vendor support. In October 2018, a several-week Department-wide FMS outage occurred causing massive disruptions throughout the department and further solidifying the urgent need for an upgraded system. The functional areas supported by FMS include General Accounting, Purchasing, Fixed Assets, Vendor Payments, Cash Receipts, and maintenance of plans for DOE School, District, Budget Branch, and State level budgets. The new modernized FMS system will require funding for ongoing licensing fees and annual maintenance and support costs.</p>	A			1,500,000
EDN400	Food Services Deficit	<p>The Department of Education's School Food Services program relies on three sources of funding: 1) Federal reimbursement: the U.S. Department of Agriculture (USDA) provides reimbursement for each meal served to cover the majority of cost for each meal; 2) Special Funds: school lunch collections for full fee or reduced fee paying students; and 3) General funds.</p> <p>This funding request is critical to support the School Food Services program's ongoing operational and staff needs. With students not having meals on campus, federal per meal reimbursement and decreased school lunch collections have resulted in a significant loss in revenue. The Program has worked to serve students who need safe and healthy meals with its Grab-n-Go meals program provided at 202 sites throughout the State and with about 30% of pre-COVID19 meals served. The Department projects the number of meals served for the current fiscal year will be 35% of pre-COVID19.</p> <p>The School Food Services program will continue to operate in a negative cash flow situation until the COVID19 pandemic ends and students are returned to on-campus school instruction.</p>	A			20,000,000

<u>Prog ID</u>	<u>MOF</u>	<u>Date</u>	<u>Appropriation</u>	<u>Amount</u>	<u>Percent</u>	<u>Reason for Exceeding Ceiling</u>	<u>Legal Authority</u>	<u>Recurring</u>	<u>GF Impact</u>
				N/A					

Department of Education Intradepartmental Transfers in FY20 and FY21

<u>Actual or Anticipated Date of Transfer</u>	<u>MOF</u>	<u>Pos (P)</u>	<u>Pos (T)</u>	<u>\$\$\$</u>	<u>From Prog ID</u>	<u>Percent of Program ID Appropriation Transferred From</u>	<u>To Prog ID</u>	<u>Percent of Receiving Program ID Appropriation</u>	<u>Reason for Transfer</u>	<u>Recurring (Y/N)</u>
7/9/2019	B	NA	NA	\$ 1,000,000	EDN 400 S-20-304-E	2%	EDN 100 S-20-323-E	19%	Per Section 37-74(d), HRS, temporary transfer of required funding to cover anticipated payroll.	N
8/12/2020	B	NA	NA	\$ 1,000,000	EDN 100 S-20-323-E	19%	EDN 400 S-20-304-E	2%	Per Section 37-74(d), HRS, returning temporary transfer of funding to cover anticipated payroll.	N
10/18/2019	A	NA	NA	\$ 830,000	EDN 200 G-20-020-E	1%	EDN 400 G-20-040-E	<1%	Per Governor's 10-7-19 memo revised Exhibit 1 for the partial release of FY20 general fund contingency restrictionsto cover unbudgeted FY20 costs related to school safety and security needs.	N
10/18/2019	A	NA	NA	\$ 830,000	EDN 300 G-20-030-E	2%	EDN 400 G-20-040-E	<1%	Per Governor's 10-7-19 memo revised Exhibit 1 for the partial release of FY20 general fund contingency restrictionsto cover unbudgeted FY20 costs related to school safety and security needs.	N
11/7/2019	A	NA	NA	\$ 1,256,454	EDN 600 G-20-060-E	<1%	EDN 100 G-20-010-E	<1%	Pursuant to Act 130, SLH 2012 (Chapter 302D-28, HRS) and Section 41 of Act 5, SLH 2019	N
12/11/2019	T	NA	NA	\$ 50,000	EDN 100 T-20-915-E	3%	EDN 400 T-20-969-E	100%	Per Section 37-74(d), HRS, transferring required ceiling to cover planned program expenditures.	N
1/1/2020	A	NA	NA	\$ 247,460	EDN 400 G-19-040-E	<1%	EDN 500 G-19-050-E	6%	Per Section 37-74(d), HRS, transferring required funding to cover planned program expenditures.	N
2/19/2020	T	NA	NA	\$ 200,000	EDN 100 T-20-902-E	4%	EDN 400 T-20-969-E	400%	Per Section 37-74(d), HRS, transferring required ceiling to cover planned program expenditures.	N
3/6/2020	P	NA	NA	\$ 1,871,186	EDN 100 S-20-810-E	20%	EDN 300 G-20-830-E	624%	Per Section 37-74(d), HRS, transferring required ceiling to accommodate DOI-Compact Impact and DOD-Troops to Teachers grant awards.	N
3/10/2020	N	NA	NA	\$ 10,802	EDN 100 S-20-210-E	<1%	EDN 700 S-20-270-E	9%	Per Section 37-74(d), HRS, transferring required ceiling to accommodate Head Start Collaboration grant award.	N
4/19/2020	A	NA	NA	\$ 3,000,000	EDN 400 G-20-040-E	1%	EDN 300 G-20-030-E	6%	Per Section 37-74(d), HRS, transferring required funding to cover anticipated payroll.	N
5/26/2020	P	NA	NA	\$ 158,297	EDN 200 G-20-820-E	58%	EDN 100 S-20-810-E	2%	Per Section 37-74(d), HRS, transferring out of expenditure ceiling to accommodate purchase order savings.	N
5/26/2020	P	NA	NA	\$ 8,260	EDN 300 G-20-830-E	28%	EDN 100 S-20-810-E	<1%	Per Section 37-74(d), HRS, transferring out of expenditure ceiling to accommodate purchase order savings.	N
5/26/2020	P	NA	NA	\$ 8,062	EDN 300 G-20-830-E	27%	EDN 150 S-20-815-E	100%	Per Section 37-74(d), HRS, transferring out of expenditure ceiling to accommodate purchase order savings.	N

Department of Education Intradepartmental Transfers in FY20 and FY21

<u>Actual or Anticipated Date of Transfer</u>	<u>MOF</u>	<u>Pos (P)</u>	<u>Pos (T)</u>	<u>\$\$\$</u>	<u>From Prog ID</u>	<u>Percent of Program ID Appropriation Transferred From</u>	<u>To Prog ID</u>	<u>Percent of Receiving Program ID Appropriation</u>	<u>Reason for Transfer</u>	<u>Recurring (Y/N)</u>
6/8/2020	A	NA	NA	\$ 1,000,000	EDN 400 G-20-040-E	<1%	EDN 200 G-20-020-E	2%	Per Section 37-74(d), HRS, transferring required funding to cover anticipated payroll.	N
6/8/2020	A	NA	NA	\$ 1,000,000	EDN 400 G-20-040-E	<1%	EDN 300 G-20-030-E	2%	Per Section 37-74(d), HRS, transferring required funding to cover anticipated payroll.	N
6/24/2020	A	NA	NA	\$ 377,666	EDN 200 G-20-020-E	1%	EDN 600 G-20-060-E	<1%	Per Governor's 6-5-20 memo revised Exhibit 1 for the partial release of 2% general fund restriction for transfer to the State Public Charter School Commission to address their incentive pay for hard-to-staff schools.	N
6/24/2020	A	NA	NA	\$ 345,334	EDN 300 G-20-030-E	1%	EDN 600 G-20-060-E	<1%	Per Governor's 6-5-20 memo revised Exhibit 1 for the partial release of 2% general fund restriction for transfer to the State Public Charter School Commission to address their incentive pay for hard-to-staff schools.	N
6/29/2020	A	NA	NA	\$ 1,200,000	EDN 400 G-20-040-E	1%	EDN 200 G-20-020-E	2%	Per Section 37-74(d), HRS, transferring required funding to cover anticipated payroll.	N
6/29/2020	A	NA	NA	\$ 30,000	EDN 400 G-20-040-E	<1%	EDN 300 G-20-030-E	<1%	Per Section 37-74(d), HRS, transferring required funding to cover anticipated payroll.	N
6/30/2020	A	NA	NA	\$ 27,990,582	EDN 100 G-20-010-E	3%	EDN 500 G-20-050-E	658%	Per Section 37-74(d), HRS to comply with HB2200 SD1.	N
6/30/2020	A	NA	NA	\$ 7,905,762	EDN 150 G-20-015-E	2%	EDN 500 G-20-050-E	185%	Per Section 37-74(d), HRS to comply with HB2200 SD1.	N
6/30/2020	A	NA	NA	\$ 497,592	EDN 200 G-20-020-E	1%	EDN 500 G-20-050-E	12%	Per Section 37-74(d), HRS to comply with HB2200 SD1.	N
6/30/2020	A	NA	NA	\$ 503,895	EDN 300 G-20-030-E	1%	EDN 500 G-20-050-E	12%	Per Section 37-74(d), HRS to comply with HB2200 SD1.	N
6/30/2020	A	NA	NA	\$ 15,520,256	EDN 400 G-20-040-E	8%	EDN 500 G-20-050-E	364%	Per Section 37-74(d), HRS to comply with HB2200 SD1.	N

Department of Education Vacancy Report as of November 30, 2020

Table 11

Prog ID	Sub-Org	Date of	Expected Fill	Position	Position Title	Exempt (Y/N)	SR Level	BU	Perm	FTE	MOF	Budgeted	Actual Salary	Authority	Occupied	# of 89 Hire	Describe if	Priority #
EDN100	BM	2019-08-16	2021-01-05	49172	Athletic Hlth Care Trainer	Y	SR22	13	P	1.000	General	\$ 55,200	\$ 58,560	Y	N			
EDN100	BM	2020-11-24	2021-02-01	52455	Athletic Hlth Care Trainer	Y	SR22	13	P	1.000	General	\$ 55,200	\$ 55,200	Y	N			
EDN100	BS	2020-01-01	2020-02-14	73156	ROTC Instructor	Certificated	ROTC	55	T	1.000	General	\$ 43,735	\$ 90,693	Y	N			
EDN100	BS	2020-10-24	2021-01-05	76087	ROTC Instructor	Certificated	ROTC	55	P	1.000	General	\$ 33,650	\$ 91,910	Y	N			
EDN100	BV	2020-07-29		72233	Secondary Teacher	Certificated	T06	05	T	1.000	General	\$ 61,216	\$ 73,851	Y	N			
EDN100	BX	2020-07-01		36740	Farm Manager I	N	F203	02	P	1.000	General	\$ 54,300	\$ 51,552	Y	N			
EDN100	BX	2019-06-01	2021-01-13	802975	School Dormitory Attendant	N	HE03	10	P	1.000	General	\$ 40,053	\$ 39,360	Y	N			
EDN100	CB	2019-12-28	2020-06-15	800665	Office Assistant III	N	SR08	03	T	1.000	General	\$ 32,290	\$ 30,240	Y	N			
EDN100	CJ	2019-12-31	2021-02-15	74920	State Office Teacher	Certificated	T04	05	T	1.000	General	\$ 42,900	\$ 90,073	Y	N			2
EDN150	FA	2020-07-30		11217	Educ Asst III	Y	SR12	03	P	1.000	General	\$ 31,036	\$ 31,957	Y	N			
EDN150	FA	2018-04-11		23257	Educ Asst III	Y	SR12	03	P	0.750	General	\$ 23,277	\$ 31,704	Y	N			
EDN150	FA	2020-09-01	2021-01-04	27604	Educ Asst III	Y	SR12	03	P	1.000	General	\$ 31,036	\$ 43,765	Y	N			
EDN150	FA	2020-11-01	2021-02-08	27606	Educ Asst III	Y	SR12	03	P	1.000	General	\$ 41,524	\$ 38,910	Y	N			
EDN150	FA	2018-09-29	2021-02-02	28355	Educ Asst III	Y	SR12	03	P	1.000	General	\$ 31,036	\$ 43,222	Y	N			
EDN150	FA	2020-05-01	2020-06-15	29771	Educ Asst III	Y	SR12	03	P	1.000	General	\$ 31,036	\$ 40,434	Y	N			
EDN150	FA	2018-02-15	2021-01-04	30951	Educ Asst III	Y	SR12	03	P	1.000	General	\$ 31,036	\$ 34,755	Y	N			
EDN150	FA	2020-01-31	2020-01-08	33283	Educ Asst III	Y	SR12	03	P	0.750	General	\$ 23,277	\$ 25,917	Y	N			
EDN150	FA	2020-01-29	2020-06-15	33317	Educ Asst III	Y	SR12	03	P	0.500	General	\$ 15,518	\$ 19,455	Y	N			
EDN150	FA	2018-08-23	2021-01-06	34891	Educ Asst III	Y	SR12	03	P	0.750	General	\$ 23,277	\$ 21,924	Y	N			
EDN150	FA	2020-01-25	2021-08-31	35333	Educ Asst III	Y	SR12	03	T	1.000	General	\$ 31,036	\$ 32,011	Y	Y	2		
EDN150	FA	2020-01-09	2020-06-15	36615	Educ Asst III	Y	SR12	03	P	1.000	General	\$ 31,036	\$ 30,746	Y	N			
EDN150	FA	2020-11-20	2020-06-30	38217	Educ Asst III	Y	SR12	03	P	1.000	General	\$ 31,036	\$ 32,011	Y	N			
EDN150	FA	2020-11-05	2021-06-30	39113	Educ Asst III	Y	SR12	03	P	1.000	General	\$ 37,306	\$ 35,987	Y	N			
EDN150	FA	2020-10-31	2021-01-04	39144	Educ Asst III	Y	SR12	03	P	1.000	General	\$ 44,937	\$ 43,765	Y	N			
EDN150	FA	2020-09-16	2021-01-04	40794	Educ Asst III	Y	SR12	03	P	0.750	General	\$ 23,277	\$ 23,968	Y	N			
EDN150	FA	2020-10-31	2021-01-04	41540	Educ Asst III	Y	SR12	03	P	1.000	General	\$ 32,820	\$ 31,957	Y	N			
EDN150	FA	2019-09-28	2021-01-06	41905	Educ Asst III	Y	SR12	03	T	0.750	General	\$ 23,277	\$ 22,682	Y	N			
EDN150	FA	2020-07-01	2021-01-10	43850	Educ Asst III	Y	SR12	03	P	0.500	General	\$ 15,518	\$ 21,031	Y	N			
EDN150	FA	2020-08-26	2021-01-08	44368	Educ Asst III	Y	SR12	03	P	0.875	General	\$ 27,642	\$ 31,488	Y	N			
EDN150	FA	2020-10-01	2021-02-01	45862	Educ Asst III	Y	SR12	03	P	1.000	General	\$ 31,036	\$ 43,765	Y	N			
EDN150	FA	2020-11-20	2021-02-02	46567	Educ Asst III	Y	SR12	03	P	1.000	General	\$ 45,366	\$ 43,765	Y	N			
EDN150	FA	2020-10-27	2021-02-14	47063	Educ Asst III	Y	SR12	03	P	1.000	General	\$ 31,036	\$ 30,370	Y	N			
EDN150	FA	2018-01-05	2021-01-07	47144	Educ Asst III	Y	SR12	03	P	0.750	General	\$ 23,277	\$ 26,066	Y	N			
EDN150	FA	2020-09-04	2020-06-15	47148	Educ Asst III	Y	SR12	03	P	1.000	General	\$ 31,326	\$ 32,011	Y	Y	1		
EDN150	FA	2020-07-31	2021-08-31	47755	Educ Asst III	Y	SR12	03	P	1.000	General	\$ 31,036	\$ 38,910	Y	N			
EDN150	FA	2020-10-31	2020-01-08	48494	Educ Asst III	Y	SR12	03	T	0.750	General	\$ 29,084	\$ 28,063	Y	N			
EDN150	FA	2020-09-11	2021-02-01	48507	Educ Asst III	Y	SR12	03	P	1.000	General	\$ 31,036	\$ 33,251	Y	N			
EDN150	FA	2020-11-25	2021-01-15	48794	Educ Asst III	Y	SR12	03	T	1.000	General	\$ 32,820	\$ 31,957	Y	N			4
EDN150	FA	2020-05-30	2021-01-08	50858	Educ Asst III	Y	SR12	03	P	0.750	General	\$ 23,277	\$ 30,326	Y	N			
EDN150	FA	2017-06-28	2021-02-01	52522	Educ Asst III	Y	SR12	03	P	0.500	General	\$ 15,518	\$ 16,006	Y	Y	2		
EDN150	FA	2020-10-31	2021-02-01	52546	Educ Asst III	Y	SR12	03	P	1.000	General	\$ 41,927	\$ 40,434	Y	N			
EDN150	FA	2018-06-15	2020-02-08	52607	Educ Asst III	Y	SR12	03	P	0.500	General	\$ 15,518	\$ 18,792	Y	N			
EDN150	FA	2020-06-27		52611	Educ Asst III	Y	SR12	03	P	0.500	General	\$ 15,518	\$ 15,122	Y	N			
EDN150	FA	2016-07-27	2020-06-15	52625	Educ Asst III	Y	SR12	03	P	0.500	General	\$ 15,518	\$ 13,588	Y	N			
EDN150	FA	2020-09-11	2021-01-13	52677	Educ Asst III	Y	SR12	03	P	1.000	General	\$ 31,326	\$ 34,557	Y	N			
EDN150	FA	2018-06-30	2021-02-08	53009	Educ Asst III	Y	SR12	03	P	0.750	General	\$ 23,277	\$ 24,008	Y	Y	2		
EDN150	FA	2020-10-23	2021-01-07	53012	Educ Asst III	Y	SR12	03	P	0.875	General	\$ 26,835	\$ 25,898	Y	N			
EDN150	FA	2020-11-07	2021-01-04	53019	Educ Asst III	Y	SR12	03	P	1.000	General	\$ 44,937	\$ 43,765	Y	N			
EDN150	FA	2020-11-14	2021-01-04	53113	Educ Asst III	Y	SR12	03	P	1.000	General	\$ 41,524	\$ 40,434	Y	N			
EDN150	FA	2020-01-06	2021-02-01	56029	Educ Asst III	Y	SR12	03	T	1.000	General	\$ 31,036	\$ 30,746	Y	N			
EDN150	FA	2020-05-30	2021-01-08	56121	Educ Asst III	Y	SR12	03	P	0.500	General	\$ 15,518	\$ 18,708	Y	N			
EDN150	FA	2020-07-01	2021-06-30	56705	Educ Asst III	Y	SR12	03	T	0.750	General	\$ 23,277	\$ 23,059	Y	N			
EDN150	FA	2020-10-01	2021-02-01	56861	Educ Asst III	Y	SR12	03	T	1.000	General	\$ 31,326	\$ 31,957	Y	N			
EDN150	FA	2020-09-01	2021-02-01	56880	Educ Asst III	Y	SR12	03	P	1.000	General	\$ 31,036	\$ 32,011	Y	Y	1		
EDN150	FA	2020-10-06	2021-02-01	56959	Educ Asst III	Y	SR12	03	P	1.000	General	\$ 31,036	\$ 33,251	Y	N			
EDN150	FA	2015-07-23	2021-02-02	56969	Educ Asst III	Y	SR12	03	T	1.000	General	\$ 31,036	\$ 32,011	Y	Y	2		
EDN150	FA	2019-10-16	2021-02-01	57118	Educ Asst III	Y	SR12	03	P	1.000	General	\$ 31,036	\$ 30,746	Y	N			
EDN150	FA	2019-11-16	2021-01-04	57138	Educ Asst III	Y	SR12	03	P	1.000	General	\$ 31,036	\$ 30,746	Y	N			
EDN150	FA	2020-03-06	2021-02-02	57190	Educ Asst III	Y	SR12	03	P	1.000	General	\$ 31,036	\$ 37,417	Y	N			
EDN150	FA	2019-12-14	2021-01-04	57251	Educ Asst III	Y	SR12	03	P	0.750	General	\$ 23,277	\$ 24,008	Y	Y	1		
EDN150	FA	2020-03-07	2021-01-04	57258	Educ Asst III	Y	SR12	03	P	0.750	General	\$ 23,277	\$ 24,938	Y	N			
EDN150	FA	2017-12-22	2021-02-08	57282	Educ Asst III	Y	SR12	03	P	0.750	General	\$ 23,277	\$ 24,665	Y	N			

Department of Education Vacancy Report as of November 30, 2020

Prog ID	Sub-Org	Date of	Expected Fill	Position	Position Title	Exempt (Y/N)	SR Level	BU	Perm	FTE	MOF	Budgeted	Actual Salary	Authority	Occupied	# of 89 Hire	Describe if	Priority #
EDN150	FA	2020-11-26	2021-02-01	57317	Educ Asst III	Y	SR12	03	T	1.000	General	\$ 33,140	\$ 31,957	Y	N			
EDN150	FA	2020-08-08	2021-08-31	57359	Educ Asst III	Y	SR12	03	P	1.000	General	\$ 31,036	\$ 32,011	Y	Y	2		
EDN150	FA	2016-08-05	2021-08-31	57361	Educ Asst III	Y	SR12	03	T	1.000	General	\$ 31,036	\$ 32,011	Y	Y	1		
EDN150	FA	2020-08-08	2021-06-30	57365	Educ Asst III	Y	SR12	03	T	1.000	General	\$ 31,036	\$ 27,854	Y	N			
EDN150	FA	2019-11-01	2021-08-31	57367	Educ Asst III	Y	SR12	03	P	0.750	General	\$ 23,277	\$ 29,183	Y	N			
EDN150	FA	2020-08-05		57390	Educ Asst III	Y	SR12	03	T	1.000	General	\$ 31,036	\$ 37,417	Y	N			
EDN150	FA	2018-12-03	2020-06-15	57468	Educ Asst III	Y	SR12	03	T	0.500	General	\$ 15,518	\$ 15,780	Y	N			
EDN150	FA	2017-08-02	2021-01-06	57547	Educ Asst III	Y	SR12	03	T	0.750	General	\$ 23,277	\$ 20,280	Y	N			
EDN150	FA	2020-08-03	2021-01-04	57767	Educ Asst III	Y	SR12	03	T	0.750	General	\$ 23,277	\$ 24,008	Y	Y	1		
EDN150	FA	2019-08-02		58012	Educ Asst III	Y	SR12	03	T	0.750	General	\$ 23,277	\$ 31,547	Y	N			
EDN150	FA	2020-02-29	2021-01-03	58176	Educ Asst III	Y	SR12	03	T	0.750	General	\$ 23,693	\$ 28,063	Y	N			
EDN150	FA	2020-10-12	2021-02-01	58863	Educ Asst III	Y	SR12	03	T	0.750	General	\$ 23,277	\$ 22,198	Y	N			
EDN150	FA	2017-05-31	2021-02-01	58867	Educ Asst III	Y	SR12	03	T	0.500	General	\$ 15,518	\$ 16,006	Y	Y	10		
EDN150	FA	2015-07-24	2021-02-01	58876	Educ Asst III	Y	SR12	03	T	1.000	General	\$ 31,036	\$ 31,727	Y	N			
EDN150	FA	2020-07-29	2021-02-01	58916	Educ Asst III	Y	SR12	03	T	1.000	General	\$ 31,036	\$ 35,987	Y	N			
EDN150	FA	2019-12-21	2020-06-15	58932	Educ Asst III	Y	SR12	03	P	1.000	General	\$ 31,036	\$ 32,011	Y	Y	2		
EDN150	FA	2020-08-01	2020-06-15	58979	Educ Asst III	Y	SR12	03	P	0.500	General	\$ 15,518	\$ 19,455	Y	N			
EDN150	FA	2020-08-01	2020-06-15	58980	Educ Asst III	Y	SR12	03	P	0.500	General	\$ 15,518	\$ 18,708	Y	N			
EDN150	FA	2020-09-01	2021-01-04	800123	Educ Asst III	Y	SR12	03	T	0.750	General	\$ 23,693	\$ 25,917	Y	N			
EDN150	FA	2019-06-04	2021-01-04	800124	Educ Asst III	Y	SR12	03	T	0.750	General	\$ 23,277	\$ 22,198	Y	N			
EDN150	FA	2019-09-21	2021-01-13	800160	Educ Asst III	Y	SR12	03	T	0.875	General	\$ 27,157	\$ 24,866	Y	N			
EDN150	FA	2020-08-01	2021-01-08	800164	Educ Asst III	Y	SR12	03	T	1.000	General	\$ 31,591	\$ 40,434	Y	N			
EDN150	FA	2019-02-16	2021-01-14	800542	Educ Asst III	Y	SR12	03	P	0.750	General	\$ 23,277	\$ 21,313	Y	N			
EDN150	FA	2018-11-16	2021-02-08	801530	Educ Asst III	Y	SR12	03	P	0.500	General	\$ 15,518	\$ 16,006	Y	Y	9		
EDN150	FA	2019-02-28	2021-01-06	801851	Educ Asst III	Y	SR12	03	T	0.750	General	\$ 23,277	\$ 23,059	Y	N			
EDN150	FA	2019-06-01	2021-01-13	801857	Educ Asst III	Y	SR12	03	T	0.875	General	\$ 27,156	\$ 26,902	Y	N			
EDN150	FA	2017-08-02	2021-01-13	801858	Educ Asst III	Y	SR12	03	T	0.875	General	\$ 27,156	\$ 22,783	Y	N			
EDN150	FA	2020-09-01	2020-06-15	801888	Educ Asst III	Y	SR12	03	T	1.000	General	\$ 31,036	\$ 34,557	Y	N			
EDN150	FA	2013-05-29	2020-06-15	801896	Educ Asst III	Y	SR12	03	T	0.750	General	\$ 23,277	\$ 19,599	Y	N			
EDN150	FA	2020-08-14		802585	Educ Asst III	Y	SR12	03	T	0.750	General	\$ 23,277	\$ 24,008	Y	N			
EDN150	FA	2019-05-01	2020-06-15	803166	Educ Asst III	Y	SR12	03	T	0.500	General	\$ 15,518	\$ 15,373	Y	N			
EDN150	FA	2020-09-29	2021-02-02	803234	Educ Asst III	Y	SR12	03	T	1.000	General	\$ 31,036	\$ 32,011	Y	Y	2		
EDN150	FA	2019-07-31	2021-01-01	803379	Educ Asst III	Y	SR12	03	T	0.500	General	\$ 15,518	\$ 16,006	Y	Y	6		
EDN150	FA	2020-09-29	2021-01-01	803380	Educ Asst III	Y	SR12	03	T	0.500	General	\$ 15,518	\$ 16,006	Y	Y	8		
EDN150	FA	2020-09-29	2021-02-02	803858	Educ Asst III	Y	SR12	03	T	1.000	General	\$ 31,036	\$ 32,011	Y	Y	2		
EDN150	FA	2020-07-30	2020-02-08	803990	Educ Asst III	Y	SR12	03	T	1.000	General	\$ 31,036		Y	N			
EDN150	FB	2015-10-17		52615	Educ Asst III	Y	SR12	03	P	0.500	General	\$ 15,518	\$ 17,179	Y	N			
EDN150	FB	2018-01-23	2021-08-31	52706	Educ Asst III	Y	SR12	03	T	1.000	General	\$ 31,036	\$ 28,585	Y	N			
EDN150	FB	2020-09-02	2021-01-04	802933	Educ Asst III	Y	SR12	03	P	1.000	General	\$ 37,739	\$ 36,732	Y	N			2
EDN150	SA	2019-11-15	2021-01-08	12061	Secretary IV	N	SR18	63	P	1.000	General	\$ 47,748	\$ 44,724	Y	N			3
EDN150	SA	2020-09-01	2020-06-15	23359	Office Assistant III	N	SR08	03	P	1.000	General	\$ 32,606	\$ 47,376	Y	N			
EDN150	SA	2017-10-26	2021-02-26	31332	Office Assistant III	N	SR08	03	P	1.000	General	\$ 32,290	\$ 33,636	Y	N			
EDN150	SA	2017-12-11	2021-02-27	33189	Office Assistant III	N	SR08	03	P	1.000	General	\$ 32,290	\$ 32,376	Y	N			
EDN150	SA	2020-07-01		34666	Office Assistant III	N	SR08	03	P	1.000	General	\$ 32,290	\$ 41,364	Y	N			
EDN150	SA	2020-07-01	2020-01-14	44024	Office Assistant III	N	SR08	03	P	1.000	General	\$ 32,290	\$ 32,011	Y	Y	2		
EDN150	SA	2020-10-31	2020-06-15	44255	Office Assistant III	N	SR08	03	P	1.000	General	\$ 44,625	\$ 43,812	Y	N			
EDN150	VA	2020-10-16	2020-01-16	74955	Educational Spec II	Certificated	3E07	06	P	1.000	General	\$ 99,298	\$ 100,334	Y	N			1
EDN150	YD	2015-07-01		801089	Prgm Splct IV	N	SR22	13	T	1.000	General	\$ 55,200	\$ 53,364	Y	N			5
EDN200	GC	2020-10-22	2021-01-01	60039	Educational Spec II	Certificated	3E07	06	P	1.000	General	\$ 99,298	\$ 100,334	Y	N			3
EDN200	GD	2018-09-29	2021-01-11	44553	Audiologist IV	N	SR22	13	P	1.000	General	\$ 56,686	\$ 63,673	Y	N			5
EDN200	GD	2020-10-01	2020-01-14	600826	Complex Academic Officer	Certificated	3E07	06	T	1.000	General	\$ 99,298	\$ 107,556	Y	N			
EDN200	GD	2018-04-09	2021-02-01	602147	Instit Analyst II	Certificated	3E07	06	T	1.000	General	\$ 99,298	\$ 94,871	Y	N			1
EDN200	GD	2020-07-29		604476	Complex Academic Officer	Certificated	3E07	06	T	1.000	General	\$ 99,298	\$ 100,334	Y	N			
EDN200	GD	2020-07-01	2021-01-04	69420	State Office Teacher	Certificated	T03	05	P	1.000	General	\$ 41,250	\$ 75,497	Y	N			6
EDN200	GP	2020-07-03	2022-07-01	68273	Educational Spec III	Certificated	3E08	06	P	1.000	General	\$ 103,524	\$ 100,334	Y	N			4
EDN200	GQ	2019-07-24	2021-01-13	803916	Prgm Splct III (Community Homeless Concerns Liaison)	N	SR20	13	P	1.000	General	\$ 51,024	\$ 50,004	Y	N			
EDN300	KD	2020-08-28	2021-03-31	38743	Office Assistant III	N	SR08	03	P	1.000	General	\$ 32,596	\$ 40,572	Y	N			2
EDN300	KD	2020-01-02		602144	Instit Analyst II	Certificated	3E07	06	T	1.000	General	\$ 99,298	\$ 101,338	Y	N			4
EDN300	KD	2020-03-11	2021-03-01	803186	Secretary IV	N	SR18	63	P	1.000	General	\$ 47,748	\$ 50,304	Y	N			3
EDN300	KD	2016-07-01	2021-02-03	803375	Secretary II	N	SR14	03	T	1.000	General	\$ 40,818	\$ 39,499	Y	N			4
EDN300	KF	2020-10-01		5299	Procurement and Contracts Support Specialist IV	N	SR22	13	P	1.000	General	\$ 55,200	\$ 55,200	Y	N			4
EDN300	KF	2020-09-18		58242	Procurement and Contracts Support Specialist IV	N	SR22	13	P	1.000	General	\$ 55,200	\$ 55,200	Y	N			11

Department of Education Vacancy Report as of November 30, 2020

Prog ID	Sub-Org	Date of	Expected Fill	Position	Position Title	Exempt (Y/N)	SR Level	BU	Perm	FTE	MOF	Budgeted	Actual Salary	Authority	Occupied	# of 89 Hire	Describe if	Priority #
EDN400	OC	2019-05-01	2021-01-01	37312	Clerical Supervisor III	N	SR14	04	P	1.000	General	\$ 39,720	\$ 38,220	Y	N			44
EDN400	OC	2018-04-10	2021-01-01	3869	Heavy Truck Driver	N	BC07	01	P	1.000	General	\$ 52,972	\$ 46,848	Y	N			48
EDN400	OC	2016-12-30	2021-03-31	40831	Engineer IV	N	SR24	13	P	1.000	General	\$ 62,136	\$ 49,462	Y	N			67
EDN400	OC	2016-09-01	2021-03-31	41693	Building Const Inspector II	N	SR19	03	P	1.000	General	\$ 49,673	\$ 65,736	Y	N			65
EDN400	OC	2020-06-27	2021-01-01	41696	Building Const Inspector II	N	SR19	03	P	1.000	General	\$ 49,673	\$ 46,467	Y	N			58
EDN400	OC	2019-09-28	2021-01-01	43534	Building Maintenance Worker I	N	BC09	01	P	1.000	General	\$ 59,020	\$ 56,826	Y	N			27
EDN400	OC	2020-11-02	2021-01-31	43539	Building Maintenance Worker I	N	BC09	01	P	1.000	General	\$ 59,020	\$ 58,668	Y	N			26
EDN400	OC	2020-10-01	2021-01-01	43544	Building Maintenance Worker I	N	BC09	01	P	1.000	General	\$ 59,020	\$ 58,668	Y	N			32
EDN400	OC	2020-04-16	2021-01-01	43551	Building Maintenance Worker I	N	BC09	01	P	1.000	General	\$ 59,020	\$ 57,516	Y	N			29
EDN400	OC	2019-11-01	2021-01-01	50928	Planner VI	N	SR26	23	P	1.000	General	\$ 67,200	\$ 86,700	Y	N			10
EDN400	OC	2020-07-01	2021-03-01	51181	Office Assistant III	N	SR08	03	P	0.500	General	\$ 16,303	\$ 15,720	Y	N			61
EDN400	OC	2019-09-28	2021-01-01	52725	Engineer V	N	SR26	23	P	1.000	General	\$ 67,200	\$ 54,096	Y	N			59
EDN400	OC	2019-10-01	2021-01-01	53161	Engineer V	N	SR26	23	P	1.000	General	\$ 67,200	\$ 74,952	Y	N			36
EDN400	OC	2019-10-15	2021-01-01	800936	Architect V	N	SR26	13	P	1.000	General	\$ 67,200	\$ 85,332	Y	N			34
EDN400	OC	2020-03-12	2021-01-01	800945	Engineer V	N	SR26	13	P	1.000	General	\$ 67,200	\$ 88,764	Y	N			39
EDN400	OC	2018-03-30	2021-01-01	801085	Engineer V	N	SR26	13	P	1.000	General	\$ 67,200	\$ 51,792	Y	N			43
EDN400	OC	2017-04-01	2021-03-31	9965	Building Const Inspector II	N	SR19	03	P	1.000	General	\$ 49,673	\$ 54,876	Y	N			66
EDN400	OD	2020-01-21	2021-02-01	31685	Janitor II	N	BC02	01	P	0.500	General	\$ 22,013	\$ 21,450	Y	N			
EDN400	OJ	2019-06-18	2020-01-01	59987	Secretary I	N	SR12	03	P	1.000	General	\$ 37,739	\$ 39,720	Y	N			45
EDN400	YA	2019-10-19	2021-01-01	802726	Office Assistant III	N	SR08	03	P	1.000	General	\$ 32,290	\$ 31,440	Y	N			14
Note:																		

The Vacancy Report includes general funded positions with the exception of:

- Positions funded in the weighted student formula, indexed complex area allocation, and adult education programs. These programs have the authority to "sell" vacant positions and receive an allocation of the position's funding to expend for casual hires, other current expenses, or equipment;
- Positions funded in alternative learning programs. These funds are for positions and other current expenses, and each complex area has discretion on the use of these funds. Funding for vacant positions may be used for other purposes;
- Hourly positions from the BT1 table (casual hires);
- Positions providing services to special needs students, such as occupational therapists, physical therapists, speech therapists, mental health supervisors, and behavioral specialists. If the services cannot be provided by an employee due to a vacancy, the vacancy savings must be used to hire a contractor to provide services; and
- Positions funded in special schools, learning centers, and alternative learning programs. Funding from vacant positions may be used to provide instructional and support services for students.

<u>Prog ID</u>	<u>Sub-Org</u>	<u>Date</u>	<u>Legal Authority</u>	<u>Position</u>	<u>Position Title</u>	<u>Exempt</u>	<u>SR Level</u>	<u>BU Code</u>	<u>T/P</u>	<u>MOF</u>	<u>FTE</u>	<u>Annual</u>	<u>Filled</u>	<u>Occupied by</u>
EDN 200	GH	10/14/1997	Act 116/SLH 2019	52758	Secretary IV	N	SR18	3	P	A	1.00	\$50,304	Y	N
EDN 200	GH	3/28/2002	Act 116/SLH 2019	57914	Office Asst III	N	SR08	3	P	A	1.00	\$25,152	Y	N
EDN 200	GH	3/28/2002	Act 116/SLH 2019	57915	Office Asst III	N	SR08	3	P	A	1.00	\$25,152	Y	N
EDN 200	GH	7/1/1989	Act 116/SLH 2019	69987	Teacher Licensing Spec II	Y	E07-02	56	P	A	1.00	\$91,909	Y	N
EDN 200	GH	8/30/1989	Act 116/SLH 2019	74675	Teacher Licensing Spec II	Y	E07-01	56	P	A	1.00	\$91,909	Y	N
EDN 200	GH	7/10/1997	Act 116/SLH 2019	73645	HTSB Exec Officer	Y	E10-12	56	P	A	1.00	\$129,252	Y	N

Note: Excludes EDN700; EOEL reporting seperately.

Department of Education Overtime Expenditure Summary

Table 13

Prog ID	Sub-Org	Program Title*	MOF	FY20 (actual)			FY21 (actual)**			FY22 (estimated)***			FY23 (budgeted)****		
				Base Salary	Overtime	Overtime	Base Salary	Overtime	Overtime	Base Salary	Overtime	Overtime	Base Salary \$\$\$\$	Overtime	Overtime
EDN100	AA	WSF ADJUSTMENT	A	8,393,916	4,225	0.1%	2,236,849	-	0.0%	6,710,547	-	0.0%	6,710,547	-	0.0%
EDN100	BX	LAHAINALUNA BOARDING DEPT-GEN FUND	A	451,368	19,661	4.4%	113,893	9,058	8.0%	341,678	27,174	8.0%	341,678	27,174	8.0%
EDN100	BM	ATHLETIC TRAINERS	A	4,466,580	1,032	0.0%	1,483,327	-	0.0%	4,449,981	-	0.0%	4,449,981	-	0.0%
EDN100	AA	WSF-INSTRUCTION	A	513,135,635	49,012	0.0%	170,930,325	1,488	0.0%	512,790,975	4,463	0.0%	512,790,975	4,463	0.0%
EDN100	AA	WSF-INSTRUCTIONAL SUPPORT	A	20,112,242	14,322	0.1%	6,507,168	-	0.0%	19,521,504	-	0.0%	19,521,504	-	0.0%
EDN100	AA	WSF-STUDENT SERVICES	A	76,943,130	10,785	0.0%	25,516,527	396	0.0%	76,549,582	1,189	0.0%	76,549,582	1,189	0.0%
EDN100	AA	WSF-STUDENT BODY ACTIVITIES	A	5,212,218	3,667	0.1%	1,743,108	-	0.0%	5,229,323	-	0.0%	5,229,323	-	0.0%
EDN100	AA	WSF-SCHOOL ADMINISTRATION	A	117,482,051	161,539	0.1%	39,359,376	52,964	0.1%	118,078,128	158,891	0.1%	118,078,128	158,891	0.1%
EDN100	AA	WSF-SCHOOL FACILITY SERVICES	A	49,974,265	878,455	1.8%	17,083,236	54,623	0.3%	51,249,709	163,869	0.3%	51,249,709	163,869	0.3%
EDN100		EDN 100 GENERAL FUND ADJUSTMENT	A	105,356	926	0.9%	219,688	362	0.2%	659,065	1,085	0.2%	659,065	1,085	0.2%
EDN100	AA	WEIGHTED STUDENT FORMULA	A	17,791	367	2.1%	299	-	0.0%	896	-	0.0%	896	-	0.0%
EDN100	DB	ESSA - MEP CONSORTIUM INCENTIVE GRANTS	N	27,153	12,889	47.5%	-	6,653	-	-	19,960	-	-	-	19,960
EDN100	DB	ESSA 21ST CCLC - SY 2018-2019	N	47,932	-	0.0%	16,316	874	5.4%	48,948	2,623	5.4%	48,948	2,623	5.4%
EDN100	DB	ESSA 21ST CCLC - SY 2017-2018 AND PRIOR	N	187,435	30,139	16.1%	20,841	3,588	17.2%	62,523	10,765	17.2%	62,523	10,765	17.2%
EDN100	DB	ESSA 21ST CCLC - SEA ACTIVITIES	N	150,730	-	0.0%	33,815	764	2.3%	101,444	2,291	2.3%	101,444	2,291	2.3%
EDN100	DB	ESEA TITLE I-SCHOOLS	N	5,380,229	2,103	0.0%	1,721,725	-	0.0%	5,165,175	-	0.0%	5,165,175	-	0.0%
EDN100		INDIRECT COST-FMS REPLACEMENT		91,491	1,103	1.2%	160,207	-	0.0%	480,621	-	0.0%	480,621	-	0.0%
EDN100	BH	OTHER EDUCATIONAL PROGRAMS	B	-	121	-	-	-	-	-	-	-	-	-	-
EDN100	BH	SUMMER SCHOOL - SPECIAL FUND	B	-	4,151	-	1,018	4,757	467.1%	3,055	14,272	467.1%	3,055	14,272	467.1%
EDN100	BR	DRIVER AND TRAFFIC SAFETY EDUCATION	U	89,703	4,736	5.3%	28,325	1,506	5.3%	84,974	4,518	5.3%	84,974	4,518	5.3%
EDN100	BB	VOC ED-PROGRAM IMPROVEMENT FY19	P	-	744	-	-	-	-	-	-	-	-	-	-
EDN100	XC	ATHLETICS (TRUST)	T	-	8,963	-	-	-	-	-	-	-	-	-	-
EDN100		CARES-ESSER-SUMMER LEARNING PROGRAM	N	-	-	-	-	1,602	-	-	4,805	-	-	-	4,805
EDN150	YG	SERVICES FOR CHILDREN WITH AUTISM	A	12,702,389	2,671	0.0%	4,142,656	-	0.0%	12,427,967	-	0.0%	12,427,967	-	0.0%
EDN150	FA	SPECIAL EDUCATION IN REGULAR SCHOOLS	A	239,457,774	5,125	0.0%	29,442,340	60	0.0%	88,327,021	179	0.0%	88,327,021	179	0.0%
EDN150	FB	HAWAII SCHOOL FOR THE DEAF AND BLIND	A	2,550,572	46,186	1.8%	855,438	3,469	0.4%	2,566,315	10,408	0.4%	2,566,315	10,408	0.4%
EDN150	SA	DISTRICT SPECIAL EDUCATION SERVICES	A	2,585,290	1,592	0.1%	839,913	-	0.0%	2,519,738	-	0.0%	2,519,738	-	0.0%
EDN150	NB	TITLE VIB SPECIAL ED-PROJECT I	N	8,651,822	1,617	0.0%	2,789,458	126	0.0%	8,368,375	378	0.0%	8,368,375	378	0.0%
EDN200	GB	INSTRUCT DEVELOP-ADMINISTRATIVE SERVICES	A	333,466	52	0.0%	84,960	-	0.0%	254,880	-	0.0%	254,880	-	0.0%
EDN200	GH	HAWAII TEACHER STANDARDS BOARD-GEN FUND	A	386,936	607	0.2%	213,158	-	0.0%	639,475	-	0.0%	639,475	-	0.0%
EDN200	GN	ICAA CI-QUALITY AND PERFORMANCE	A	13,552,428	3,965	0.0%	4,517,754	-	0.0%	13,553,261	-	0.0%	13,553,261	-	0.0%
EDN200	GG	ADVANCE TECH RESEARCH-ADMIN	A	77,713	1,467	1.9%	28,990	62	0.2%	86,970	186	0.2%	86,970	186	0.2%
EDN200	GH	HAWAII TEACHER STANDARDS BOARD	B	41,860	993	2.4%	-	-	-	-	-	-	-	-	-
EDN300	KO	WORKERS COMPENSATION-ADMINISTRATION	A	1,113,288	15,370	1.4%	351,737	-	0.0%	1,055,210	-	0.0%	1,055,210	-	0.0%
EDN300	KD	SUPERINTENDENT SUPPORT	A	833,790	1,511	0.2%	289,058	-	0.0%	867,173	-	0.0%	867,173	-	0.0%
EDN300	KF	BUSINESS OPERATIONS	A	2,609,244	235,631	9.0%	812,172	28,394	3.5%	2,436,515	85,181	3.5%	2,436,515	85,181	3.5%
EDN300	UA	ENTERPRISE SYSTEMS	A	2,864,550	8,053	0.3%	913,509	8,407	0.9%	2,740,528	25,220	0.9%	2,740,528	25,220	0.9%
EDN300	KD	COMMUNICATIONS & COMMUNITY AFFAIRS	A	563,852	387	0.1%	174,153	-	0.0%	522,458	-	0.0%	522,458	-	0.0%
EDN300	UA	SCHOOL TECHNOLOGY SERVICES & SUPPORT	A	3,175,964	2,555	0.1%	1,093,292	6,228	0.6%	3,279,877	18,685	0.6%	3,279,877	18,685	0.6%
EDN300	UA	INFORMATION & TECHNOLOGY SERVICES	A	381,285	250	0.1%	157,418	558	0.4%	472,254	1,673	0.4%	472,254	1,673	0.4%
EDN300	UA	ENTERPRISE INFRASTRUCTURE SERVICES	A	2,393,537	13,715	0.6%	781,764	9,222	1.2%	2,345,293	27,666	1.2%	2,345,293	27,666	1.2%
EDN300	KO	PERSONNEL ASSISTANCE	A	2,604,590	57,828	2.2%	915,070	9,531	1.0%	2,745,209	28,592	1.0%	2,745,209	28,592	1.0%
EDN300	KO	PERSONNEL MANAGEMENT	A	4,063,343	49,689	1.2%	1,361,110	30,344	2.2%	4,083,329	91,032	2.2%	4,083,329	91,032	2.2%
EDN300	KF	FISCAL SERVICES	A	445,929	5,882	1.3%	133,711	-	0.0%	401,134	-	0.0%	401,134	-	0.0%
EDN300	KF	ACCOUNTING	A	684,106	1,841	0.3%	204,530	-	0.0%	613,589	-	0.0%	613,589	-	0.0%
EDN300		EDN 300 GENERAL FUND ADJUSTMENT	A	506,476	2,687	0.5%	261,364	2,991	1.1%	784,093	8,972	1.1%	784,093	8,972	1.1%
EDN400	OB	SCHOOL FACILITY & SUPPORT SERVICES	A	591,091	3,828	0.6%	221,989	-	0.0%	665,967	-	0.0%	665,967	-	0.0%
EDN400	MB	FOOD SERVICE ADMINISTRATION	A	453,018	515	0.1%	183,972	-	0.0%	551,916	-	0.0%	551,916	-	0.0%
EDN400	MD	FOOD SERVICES-GENERAL FUND	A	12,764,175	23,996	0.2%	4,137,021	2,553	0.1%	12,411,064	7,659	0.1%	12,411,064	7,659	0.1%

Department of Education Overtime Expenditure Summary

Prog ID	Sub-Org	Program Title*	MOF	FY20 (actual)			FY21 (actual)**			FY22 (estimated)***			FY23 (budgeted)****		
				Base Salary	Overtime	Overtime	Base Salary	Overtime	Overtime	Base Salary	Overtime	Overtime	Base Salary \$\$\$\$	Overtime	Overtime
EDN400	OJ	ENVIRONMENTAL SERVICES	A	98,098	645	0.7%	22,348	-	0.0%	67,044	-	0.0%	67,044	-	0.0%
EDN400	OC	FACILITIES DEVELOPMENT	A	3,219,057	128,847	4.0%	941,984	34,949	3.7%	2,825,953	104,846	3.7%	2,825,953	104,846	3.7%
EDN400	OC	FACILITIES MAINTENANCE	A	9,056,982	77,235	0.9%	2,978,456	61,792	2.1%	8,935,369	185,375	2.1%	8,935,369	185,375	2.1%
EDN400	OE	UTILITIES EFFICIENCY	A	-	854		-	-		-	-		-	-	
EDN400		EDN 400 GENERAL FUND ADJUSTMENT	A	39,753	1,550	3.9%	56,475	-	0.0%	169,425	-	0.0%	169,425	-	0.0%
EDN400	MD	SCH PRGM FOOD SERVICES	N	26,371,806	40,185	0.2%	8,549,247	952	0.0%	25,647,741	2,856	0.0%	25,647,741	2,856	0.0%
EDN400	MC	USDA STATE ADMIN EXPENSE FY20	N	466,139	3,406	0.7%	245,491	1,900	0.8%	736,472	5,700	0.8%	736,472	5,700	0.8%
EDN400	MD	FFVP-SFSB FY19	B	-	7,345		-	-		-	-		-	-	
EDN400	MD	FFVP-SFSB FY20	B	-	8,636		-	5,583		-	16,750		-	16,750	
EDN400	OG	USE OF SCHOOL FACILITIES - SCHOOL	B	-	7,228		-	51		-	153		-	153	
EDN400	OC	FACILITY DEV ASSESSMENT OPERATING ACCT	W	-	13,490		-	1,996		-	5,987		-	5,987	
EDN500	PC	ADULT EDUCATION PER PUPIL ALLOCATION	A	3,171,187	14,643	0.5%	1,103,087	2,140	0.2%	3,309,261	6,419	0.2%	3,309,261	6,419	0.2%
EDN500	PC	ADULT BASIC EDUCATION	A	-	3,265		-	587		-	1,760		-	1,760	
EDN500	PC	ADULT EDUCATION PPA ADJUSTMENT	A	32,833	1,712	5.2%	12,729	-	0.0%	38,186	-	0.0%	38,186	-	0.0%
EDN500	WA	AFTER SCHOOL PROGRAM	A	-	183		-	-		-	-		-	-	
EDN500	WA	AFTER SCHOOL (A+) REVOLVING FUND	W	226,051	10,441	4.6%	72,313	458	0.6%	216,939	1,375	0.6%	216,939	1,375	0.6%
EDN500	PC	ADULT EDUCATION ENROLLMENT/TESTING FUND	T	-	7,760		-	-		-	-		-	-	
		MIDDLE SCHOOL UPLINK-DHS FY19	N	42,066	28,325	67.3%	-	1,823		-	5,470		-	5,470	
		MIDDLE SCHOOL UPLINK-DHS FY20	N	33,907	39,708	117.1%	17,229	25,056	145.4%	51,688	75,167	145.4%	51,688	75,167	145.4%
		GEAR UP PROGRAM FY20		16,200	1,243	7.7%	57,708	438	0.8%	173,125	1,313	0.8%	173,125	1,313	0.8%
		EMERGENCY SHELTER REIMBURSEMENT ACCOUNT	T	-	-		-	928		-	2,784		-	2,784	
* Only includes DOE programs that had overtime in FY20 and/or FY21															
** FY 21 actual as of October 31, 2020.															
*** FY 22 estimated based on annualized FY 21.															
**** FY23 amount carried forward from FY 22.															

Prog ID	MOF	Amount	Frequency (M/A/O)	Max Value	Outstanding Balance	Term of Contract			Entity	Contract Description	Explanation of How Contract is Monitored	POS Y/N	Category E/L/P/C/G/S/*
						Date Executed	From	To					
EDN100	A	\$ 157,500.00	M	\$ 170,000.00	\$ 12,500.00	08/06/18	08/06/18	05/31/21	Keeney Consulting Group, LLC	PD & Technical Assistance Implementing a Long-Term Plan for Improving K-12 Math Instruction for the HDOE BKM	Complex area staff on hand for all workshops and planning sessions. Complex area staff reviews effectiveness through teachers observations student achievement data.	N	S
EDN100	N	\$ 102,510.00	O - per invoice	\$ 273,960.00	\$ 171,450.00	09/12/19	9/12/2019	08/31/21	The Quaglia Institute for Student Voice and Aspirations Inc.	PD for BKM Complex:	Complex area staff on hand for all workshops and planning sessions. Complex area staff reviews effectiveness through teachers observations student achievement data.	N	S
EDN100	A	\$ 69,362.00	M	\$ 85,000.00	\$ 15,638.00	07/03/17	07/03/17	06/30/21	First Response Professional Security Services LLC dba Alarm Hawaii.Com	Installation of alarm and CCTV Security System	Monthly maintenance agreement to keep system in satisfactory working order.	N	G
EDN100	N	\$ 15,000.00	O - upon completion of sessions and reports to admin	\$ 120,000.00	\$ 105,000.00	01/16/20	01/16/20	01/31/21	Keeney Consulting Group, LLC	Strategies and Structures for Smaller Learning Communities	Monitoring is conducted regularly after inservice visits. Administrator meets with contractor and is given written reports after each visit	Y	S
EDN100 EDN200	P, A	\$ 95,500.00	O - upon completion of reports	\$ 103,000.00	\$ 7,500.00	02/09/16	02/09/16	07/31/21	RTI International	External Evaluation of Federal Grant	Monitoring is completed as needed, but at minimum at reporting due dates and prior to payment.	N	S
EDN100	A, W	\$ 161,500.00	M	\$ 225,000.00	\$ 63,500.00	12/20/17	01/01/18	12/31/20	Creative Grant Writing Services	Grant writing services	Monitoring occurs as needed upon identification of grant opportunity, but minimally monthly to verify satisfactory services prior to payment.	N	S
EDN100 EDN200	P/A	\$ 20,000.00	O - upon receipt of deliverables (reports)	\$ 30,000.00	\$ 10,000.00	01/02/19	01/02/19	09/30/21	Pacific Research and Evaluation, LLC	External Evaluator - DoDEA "Ala Hele" 2018	Monitoring is completed as needed, but at minimum at reporting due dates and prior to payment	N	S
EDN100	N	\$ 48,214.12	O	\$ 48,214.12	\$ -	07/16/20	07/16/20	10/15/20	Connecting the Dots, LLC	Graphic Design Equipment (Laser Engraver/UV Flatbed Printer)	No monitoring involved, single item	N	G
EDN100	A	\$ 20,400.00	M	\$ 115,333.92	\$ 94,933.92	08/15/19	08/15/19	05/31/21	Empico Inc. dba Jani-King Hawaii	Classroom Cleaning Services for Castle High School	Ongoing meetings with crew leader on campus, reviewing classroom checklist; Also, periodic meetings with franchise owner (every month or so).	Y	S

Prog ID	MOF	Amount	Frequency (M/A/O)	Max Value	Outstanding Balance	Term of Contract			Entity	Contract Description	Explanation of How Contract is Monitored	POS Y/N	Category E/L/P/C/G/S/*
						Date Executed	From	To					
	B	\$ -	A	\$ 142,800.00	\$ 142,800.00	02/06/20	10/07/19	09/30/21	University of Hawaii, Kapiolani Community College	University of Hawaii at Kapiolani Community College to provide a Health Education Non-Credit (HENC) program in Pharmacy Technician	Ongoing monthly meetings/updates with KCC, tracking of student progress towards completion of the program.	Y	S
EDN100	N	\$ 37,954.84	M	\$ 8,000,000.00	\$ 7,962,045.16	03/06/20	03/06/20	09/30/24	University of Hawaii on behalf of Hawaii P-20 Partnerships for Education	Provide Support and Implementation of the Birth to K Entry component of the Comprehensive Literacy State Development Program	Program is invoiced by UH P20 for project management K - Age 5 and EL Subgrantees reimbursements. P-20 provides expenditure spread sheet with break down of administrative costs and subgrantees monthly payments.	Y	S
EDN150	N	\$ 1,430,000.00	O	\$ 1,430,000.00	\$ -	05/15/17	05/15/17	06/30/21	Office of Child Support Hearings	Special Education Impartial Due Process Hearing Officers	The Contractor (Dept of the Attorney General) is required to submit any all data requested by the HIDEO for the purpose of complying with federal and state reporting requirements. The Contractor is required to provide an accounting of the funds used during the previous fiscal year and must return any unencumbered and unspent funds.	Y	S
EDN150	N	\$ 233,652.50	M	\$ 307,167.00	\$ 73,514.50	04/24/18	05/01/18	06/30/21	Special Education Solutions, LLC	Technical Assistance support for Hearing Officers of impartial IDEA due process hearings	Program Manager is invoiced directly from Special Education Solutions LLC upon completion of services and receipt of the deliverables and/or completion of tasks.	Y	S
EDN150	N	\$ 121,500.00	M	\$ 160,000.00	\$ 38,500.00	07/25/16	08/01/16	06/30/21	The Mediation Center of the Pacific	Provision of Mediation Services	Program Manager is invoiced directly from Mediation Center of the Pacific Inc. upon the completion of mediation services for cases relating to special education statewide and receipt of the deliverables. The Contractor is required to provide a monthly report to the POC no later than the 30th of the following month.	Y	S

Department of Education Active Contracts as of December 1, 2020

Prog ID	MOF	Amount	Frequency (M/A/O)	Max Value	Outstanding Balance	Term of Contract			Entity	Contract Description	Explanation of How Contract is Monitored	POS Y/N	Category E/L/P/C/G/S/*
						Date Executed	From	To					
EDN300	N	\$ 38,730.00	M	\$ 108,500.00	\$ 69,770.00	07/26/19	07/26/19	04/30/21	Brustein & Manasevit	Evaluation of the Monitoring & Compliance Branch's Compliance Review Process	Contractor is required to submit deliverables to the Program Manager.	Y	S
EDN150	N	\$ 253,000.00	O	\$ 410,800.00	\$ 157,800.00	07/08/19	07/11/19	06/30/21	Department of Health	Provision of Support for the Special Education Advisory Council & Special Parent Information Network (SPIN)	Contractor is required to provide quarterly reports at the end of each quarter. These reports are to be submitted with each invoice.	Y	S
EDN100	A	\$ 8,864.91	O	\$ 215,000.00	\$ 206,135.09	09/23/19	09/23/19	07/31/22	Kanehunamoku Voyaging Academy	Services to support the creation of a CTE maritime pathway and associated professional development that embed HA and Ho'okahua Kuana'ike Hawai'i	Monitored through monthly meeting check-ins	Y	S
EDN100	A	\$ 150,000.00	O	\$ 600,000.00	\$ 450,000.00	07/09/19	07/09/19	06/30/21	UH Office of Hawaiian Education	Support Professional Development Opportunities Focus on Hawaiian Studies, Language, Culture and History	Ongoing meetings between OHE and Principal Investigator	Y	S
EDN100	A	\$ 400,000.00	O	\$ 1,000,000.00	\$ 100,000.00	11/15/19	11/19/19	06/30/22	UHCC	To Provide Hawaiian Language Courses	Ongoing mtgs OHE & Principal Inv.	Y	S
EDN100	A, T	\$ 14,400.00	O	\$ 76,800.00	\$ 62,400.00	12/04/19	12/04/19	08/31/21	University of Hawaii at Kapiolani Community College	Pharmacy Technician Program at Farrington High School	Contractor will provide the Health Education Non-Credit Program in Pharmacy Tech, monitor students, ensure successful completion and communicate with POC.	Y	S
EDN200	B, A	\$ 1,010,516.44	M	\$ 1,277,692.88	\$ 267,176.44	09/23/16	09/23/16	06/30/21	Business Solutions Technologies	Development of an online web application software system for HTSB	Monthly report to HTSB Executive Director and to HTSB Board at their regular business meetings.	N	S
EDN100	N	\$ 316,990.00	O	\$ 1,140,000.00	\$ 823,010.00	02/27/19	02/27/19	02/28/21	McCarley Group, LLC	To Provide Professional Services for the West Hawaii Complex Area	Contractor holds meetings before and after services with Principals to provide prep and feedback. Financial limits reviewed weekly.	Y	S
EDN150	A	\$ 15,773.56	O	\$ 200,000.00	\$ 184,226.44	12/30/19	12/30/19	08/31/21	Western Interstate Commission for Higher Education	Services to Supplement Recruitment of Clinical Psychologists	Monitor invoices with Contractor, provider, POC and CABM when needed.	Y	S
EDN300	A	\$ 4,658.24	O	\$ 14,000.00	\$ 9,341.76	01/10/17	01/10/17	01/31/22	DAGS	Auditing of NI Local School Accts	Contract monitored by a program manager	N	S

Prog ID	MOF	Amount	Frequency (M/A/O)	Max Value	Outstanding Balance	Term of Contract			Entity	Contract Description	Explanation of How Contract is Monitored	POS Y/N	Category E/L/P/C/G/S/*
						Date Executed	From	To					
EDN500	N	\$ 22,500.00	0 - After services are rendered, the provider submits an invoice	\$ 199,999.80	\$ 177,499.80	09/16/19	09/16/19	09/15/21	YMCA of Honolulu	After School and Summer Program at Central Middle School	Contractors submit quarterly invoice. Meetings with the service providers are held. The program is monitored through the Office of Community Engagment. Reports are submitted to their office.	Y	S
EDN100	N	\$ -	0 - After services are rendered, the provider submits an invoice	\$ 38,500.00	\$ 38,500.00	03/25/20	03/25/20	06/30/21	Keeney Consulting Group, LLC	Middle School Mathematics Instructional Support	Contractor submits invoice after delivery of service on a monthly basis.	Y	S
EDN150	A	\$ 106,920.00	M	\$ 534,600.00	\$ 427,680.00	06/28/16	07/01/16	06/30/21	Ohana Clinical Care	Mokihana Program for Kauai District	Contractor submits monthly invoice. CABM compares to data entered in PsyTrace program. CABM monitors contract balance. Contract Administrator reviews clinical notes and service logs via Psytrace and eCSSS. Monthly clinical group supervision.	Y	S
EDN150	A	\$ 213,840.00	M	\$ 855,360.00	\$ 641,520.00	06/25/16	07/01/16	06/30/21	Pacific Psychology Partners, Inc. (Alex Bivens, Ph.D)	Mokihana Program for Kauai District	Contractor submits monthly invoice. CABM compares to data entered in PsyTrace program. CABM monitors contract balance. Contract Administrator reviews clinical notes and service logs via Psytrace and eCSSS. Monthly clinical group supervision.	Y	S
EDN100	N	\$ 36,480.00	M	\$ 216,960.00	\$ 180,480.00	07/01/19	07/01/19	06/30/21	Robert's Hawaii School Bus, inc.	Bus service for UPLINK After School Program and UPLINK Summer Program	Invoice for bus services are sent monthly, UPLINK Coordinator verifies dates of service. Account Clerk makes payment.	Y	S
EDN100	P	\$ 37,800.00	O - 2 pymts/yr	\$ 52,800.00	\$ 15,000.00	11/04/16	11/04/16	10/31/21	Ward Research, Inc.	External Evaluator	External Evaluator services includes consultation on grant activities and completion of annual evaluation report for federal grant	Y	S

Prog ID	MOF	Amount	Frequency (M/A/O)	Max Value	Outstanding Balance	Term of Contract			Entity	Contract Description	Explanation of How Contract is Monitored	POS Y/N	Category E/L/P/C/G/S/*
						Date Executed	From	To					
EDN100	N	\$ 41,457.60	O	\$ 41,487.00	\$ 29.40	03/05/19	03/05/19	06/30/21	UH Multi Tiered System of Support for Central District Schools	Develop and deliver professional learning (PL) and follow-up consultation/activities to school faculty and staff in Central district	Monitoring is done via meetings with contract provider.	Y	S
EDN200	G	\$ 355,000.00	O	\$ 355,000.00	\$ -	12/27/19	07/01/19	12/31/20	Leilehua Alumni and Community Association	42F-Widen the Exposure and Education of, and Opportunities In, Computer Science to Students K-12 in the Leilehua Complex	Monitoring is done via meetings with contract provider.	N	G
EDN150	P	\$ 46,000.00	O	\$ 144,000.00	\$ 98,000.00	09/22/17	09/22/17	06/30/21	University of Hawaii	To Provide Social Work Services for HIDEOE	Social work students fulfill the required hours of their practicum and maintain a grade of nothing less than a B-. A DOE HI AWARE supervisor will monitor the hours and grades and shall report to the program manager. The program manager will process the invoices on a quarterly basis.	N	S
EDN200	G	\$ 200,000.00	O	\$ 200,000.00	\$ -	12/09/19	07/01/19	12/31/20	Searider Productions Foundation	42F - Provide the Waianae Community on the Leeward Coast with educational support, job training, and workforce development opportunities for success as citizens of local and global communities	The contract progress is monitored through quarterly progress reports that are submitted by SPF. The quarterly reports detail the progress made and future actions to be taken to achieve the deliverables of the contract. An extension of the contract performance period has been executed through 6/30/2021 due to the challenges to provide services due to COVID.	Y	S
EDN100	A	\$ 65,698.00	M	\$ 133,852.00	\$ 68,154.00	05/14/19	08/01/19	07/31/21	Empico Inc. dba Jani-King Hawaii	Daily cleaning of classrooms		N	S
EDN100	N	\$ 197,450.00	A	\$ 267,291.00	\$ 69,841.00	10/03/17	10/03/17	09/30/21	Dept of Public Safety	Instructional Services & Supplies for the Dept. of Public Safety's Neglected, Delinquent, and At-Risk Youth Program	Monitored by Beg. of Year, Mid-Year, and EOY coordinator meetings, contract deliverables, ongoing communication, program monitoring via desk audits and site visitations	Y	G/S
EDN200	A	\$ 753,271.95	O - Based on Comp Schedule	\$ 1,398,900.00	\$ 645,628.05	06/07/18	07/01/18	06/30/21	Blackboard Inc	Learning Management System for HVLN online course and blended learning programs	Quarterly Reports	N	S

Prog ID	MOF	Amount	Frequency (M/A/O)	Max Value	Outstanding Balance	Term of Contract			Entity	Contract Description	Explanation of How Contract is Monitored	POS Y/N	Category E/L/P/C/G/S/*
						Date Executed	From	To					
EDN100	N	\$ 165,000.00	O	\$ 275,000.00	\$ 110,000.00	09/29/16	10/01/16	09/30/21	University of Hawaii - ORS	Coordinate and administer the Hawaii Youth Risk Behavioral Survey	Contract monitored by a program manager	Y	S
	T	\$ 178,158.00	A	\$ 534,474.00	\$ 356,316.00	12/13/19	07/01/20	06/30/23	The Library Corporation	Centralized Integrated Library Management System	Contract monitored by program manager and meetings with contract provider.	N	G/S
EDN300	A	\$ 96,701.53	O	\$ 200,000.00	\$ 103,298.47	01/08/20	07/01/19	12/31/20	Oceanit Research Foundation	42F - To support the movement of bringing critical thinking and creative problem-solving via computer programming to every student in HIDEO	Contract monitored by program manager and meetings with contract provider.	Y	S
Varied based on school/office/program used to procure services	A, B, N, P, T, W (depends on school/office funding source)	\$ -	O	\$ 400,000.00	\$ 400,000.00	01/17/20	01/17/20	12/31/20	Curriculum Research & Development Group (CRDG) College of Education, University of Hawaii Mānoa	Provide Professional Services for the Hawai'i Department of Education	Quarterly reports	Y	S
EDN200	A	\$ 29,999.96	O	\$ 30,000.00	\$ 0.04	03/06/20	03/06/20	12/31/20	UH Curriculum Research & Development Group (CRDG)	HIDOE Computer Science Landscape Report	Landscape Report Fully Completed	Y	S
EDN400	A	\$ 230,111.00	O	\$ 237,915.03	\$ 7,804.03	12/29/16	01/01/17	12/31/20	American Controls & Equipment, Inc.	HVAC Energy Monitoring and Control Systems (EMCS)	All work performed is subject to evaluation or random periodic inspection and testing by the CA or a representative of the HIDEO	Y	S
EDN400	A	\$ 97,900.00	O	\$ 104,400.00	\$ 6,500.00	12/29/16	01/01/17	12/31/20	Automatic Controls Engineering Corporation	HVAC Energy Monitoring and Control Systems (EMCS)	All work perform is subject to evaluation or random periodic inspection and testing by the CA or a representative of the HIDEO	Y	S
EDN400	A	\$ 577,915.72	O	\$ 597,748.17	\$ 19,832.45	12/28/16	01/01/17	12/31/20	Hawaii Energy Systems, LLC	HVAC Energy Monitoring and Control Systems (EMCS)	All work performed is subject to evaluation or random periodic inspection and testing by the CA or a representative of the HIDEO	Y	S
EDN400	A	\$ 970,376.92	O	\$ 1,048,097.28	\$ 77,720.36	12/28/16	01/01/17	12/31/20	Trane U.S., Inc.	HVAC Energy Monitoring and Control Systems (EMCS)	All work performed is subject to evaluation or random periodic inspection and testing by the CA or a representative of the HIDEO	Y	S

Prog ID	MOF	Amount	Frequency (M/A/O)	Max Value	Outstanding Balance	Term of Contract			Entity	Contract Description	Explanation of How Contract is Monitored	POS Y/N	Category E/L/P/C/G/S/*
						Date Executed	From	To					
EDN400	A	\$ 134,110.00	O	\$ 137,130.00	\$ 3,020.00	06/23/15	07/01/15	06/30/21	Pural Water Specialty, Co., Inc.	Maintenance and Testing of Fire Hydrants for Hawaii, Maui and Kauai	All work performed is subject to evaluation or random periodic inspection and testing by the CA or a representative of the HIDEOE	Y	S
EDN400	A	\$ 123,000.00	O	\$ 153,750.00	\$ 30,750.00	03/31/16	04/01/16	03/31/21	Doonwood Engineering, Inc.	Septic Waste Systems Maintenance for Oahu	All work performed is subject to evaluation or random periodic inspection and testing by the CA or a representative of the HIDEOE	Y	S
EDN400	A	\$ 688,788.17	M	\$ 1,689,766.56	\$ 1,000,978.39	08/16/16	09/01/16	08/31/21	Oahu Air Conditioning Service, Inc.	Provide Maintenance Services for Air Conditioning Units at Various DOE Schools on the Island of Kauai	All work performed is subject to evaluation or random periodic inspection and testing by the CA or a representative of the HIDEOE	Y	S
EDN400	A	\$ 5,211,154.75	M	\$ 5,908,011.75	\$ 696,857.00	09/13/16	10/01/16	09/30/20	West Oahu Aggregate Co., Inc.	Refuse, Recycling, disposal for Various Schools on Oahu (Honolulu, Windward, Central, Leeward Districts)	All work performed is subject to evaluation or random periodic inspection and testing by the CA or a representative of the HIDEOE	Y	S
EDN400	A	\$ 1,716,620.25	M	\$ 2,011,396.85	\$ 294,776.60	02/01/17	02/01/17	09/30/20	West Oahu Aggregate Co., Inc.	Refuse and Recycling Collection and Disposal Services for Various Schools on Oahu (Honolulu/Windward Districts)	All work performed is subject to evaluation or random periodic inspection and testing by the CA or a representative of the HIDEOE	Y	S
EDN400	A	\$ 1,733,693.80	M	\$ 2,101,493.76	\$ 367,799.96	01/25/17	01/25/17	09/30/20	West Oahu Aggregate fka Roloffs Hawaii, LLC	Refuse and Recycling Collection and Disposal Services for Various Schools on Oahu (Honolulu/Windward Districts)	All work performed is subject to evaluation or random periodic inspection and testing by the CA or a representative of the HIDEOE	Y	S
EDN400	A	\$ 304,201.65	M	\$ 354,140.00	\$ 49,938.35	11/14/16	11/14/16	11/14/20	Pacific Biodiesel Logistics, LLC	Provide maintenance service for grease traps at various Maui district schools	All work performed is subject to evaluation or random periodic inspection and testing by the CA or a representative of the HIDEOE	Y	S
EDN400	A	\$ 481,174.57	M	\$ 618,098.08	\$ 136,923.51	02/01/17	02/01/17	01/31/21	Oahu Air Conditioning Service, Inc.	Maintenance of air conditioning and heating ventilating equipment at Various Schools and State Public Buildings on the island of Hawaii	All work performed is subject to evaluation or random periodic inspection and testing by the CA or a representative of the HIDEOE	Y	S

Prog ID	MOF	Amount	Frequency (M/A/O)	Max Value	Outstanding Balance	Term of Contract			Entity	Contract Description	Explanation of How Contract is Monitored	POS Y/N	Category E/L/P/C/G/S/*
						Date Executed	From	To					
EDN400	A	\$ 129,095.00	O	\$ 102,561.00	\$ (26,534.00)	08/14/17	08/14/17	06/30/21	Big Island Safety Equipment, Inc. dba Hilo Fire Extinguishers	Maintenance of Fire Protection Equipment at Various Schools on the Island of Hawaii	All work performed is subject to evaluation or random periodic inspection and testing by the CA or a representative of the HIDEO	Y	S
EDN400	A	\$ 117,179.57	O	\$ 122,730.00	\$ 5,550.43	12/27/17	01/01/18	12/31/20	Alliance Fire Safety Specialist	Maintenance of Fire Protection Equipment at Various Schools on the Island of Oahu - Central District	All work performed is subject to evaluation or random periodic inspection and testing by the CA or a representative of the HIDEO	Y	S
EDN400	W	\$ 118,327.32	M	\$ 256,336.92	\$ 138,009.60	05/01/18	05/30/18	05/29/21	ARC Document Solutions, LLC	Scan, duplicate and distribute construction bids	All work performed is subject to evaluation or random periodic inspection and testing by the CA or a representative of the HIDEO	Y	S
EDN400	A	\$ 243,804.30	M	\$ 250,771.00	\$ 6,966.70	10/23/17	11/17/17	11/16/20	SimplexGrinnell LP	Fire Alarm System Maintenance and Inspection - Kauai	All work performed is subject to evaluation or random periodic inspection and testing by the CA or a representative of the HIDEO	Y	S
EDN400	A	\$ 145,124.28	O	\$ 589,425.00	\$ 444,300.72	02/21/18	02/21/18	12/31/20	B and B Pumping Service, Inc.	Repair and Maintenance of Individual Wastewater Systems on the island of Hawaii (Big Island)	All work performed is subject to evaluation or random periodic inspection and testing by the CA or a representative of the HIDEO	Y	S
EDN400	A	\$ 269,020.86	M	\$ 283,575.00	\$ 14,554.14	10/23/17	11/01/17	10/31/20	Johnson Control Fire Protection LP SimplexGrinnell LP	Maintenance and Inspection for Fire Alarm Systems, Master Clocks and Program Signal Systems - Maui	All work performed is subject to evaluation or random periodic inspection and testing by the CA or a representative of the HIDEO	Y	S
EDN400	A	\$ 76,447.16	M	\$ 124,500.00	\$ 48,052.84	04/26/18	04/26/18	03/31/21	Wade H. Nakayama dba Lena Blue Services	Maintenance and Repair of IWS for HIDEO Schools on Molokai	All work performed is subject to evaluation or random periodic inspection and testing by the CA or a representative of the HIDEO	Y	S
EDN400	A	\$ 227,324.76	M	\$ 300,586.70	\$ 73,261.94	05/01/18	05/01/18	04/30/21	Maui Disposal Co., Inc.	Provide refuse collection and disposal for Lanai HES	All work performed is subject to evaluation or random periodic inspection and testing by the CA or a representative of the HIDEO	Y	S

Prog ID	MOF	Amount	Frequency (M/A/O)	Max Value	Outstanding Balance	Term of Contract			Entity	Contract Description	Explanation of How Contract is Monitored	POS Y/N	Category E/L/P/C/G/S/*
						Date Executed	From	To					
EDN400	A	\$ 111,785.14	O	\$ 114,173.10	\$ 2,387.96	04/30/18	05/01/18	04/30/21	Alliance Fire Safety Specialist	Fire Suppression Equipment and Systems Maintenance at Various Schools on the Island of Oahu for the DOE	All work performed is subject to evaluation or random periodic inspection and testing by the CA or a representative of the HIDEOE	Y	S
EDN400	A	\$ 113,265.07	M	\$ 204,309.17	\$ 91,044.10	04/23/18	04/23/18	06/30/21	Kauai Grease Trap, Inc.	Provide Maintenance and Services of Grease Traps for Various Schools on Kauai.	All work performed is subject to evaluation or random periodic inspection and testing by the CA or a representative of the HIDEOE	Y	S
EDN400	A	\$ 843,025.53	M	\$ 1,233,994.86	\$ 390,969.33	09/11/18	10/01/18	06/30/21	Aloha Waste Systems, Inc.	Provide Refuse & Recycling Collection and Disposal for Maui	All work performed is subject to evaluation or random periodic inspection and testing by the CA or a representative of the HIDEOE	Y	S
EDN400	A	\$ 1,187,354.25	M	\$ 1,709,790.12	\$ 522,435.87	09/01/18	09/01/18	08/31/21	HMP, Inc. dba Business Services Hawaii	Provide refuse and recycling services for various schools on the island of Hawaii	All work performed is subject to evaluation or random periodic inspection and testing by the CA or a representative of the HIDEOE	Y	S
EDN400	A	\$ 885,090.12	M	\$ 1,285,945.68	\$ 400,855.56	09/01/18	09/01/18	08/31/21	Pacific Waste, Inc.	Provide refuse and recycling services for various schools on the island of Hawaii	All work performed is subject to evaluation or random periodic inspection and testing by the CA or a representative of the HIDEOE	Y	S
EDN400	A	\$ 309,600.00	O	\$ 309,600.00	\$ -	10/04/18	10/04/18	06/30/21	Phoenix Pacific, Inc.	Provide maintenance services, inspection and certification of fire alarm systems for various DOE schools and offices on this island of Hawaii	All work performed is subject to evaluation or random periodic inspection and testing by the CA or a representative of the HIDEOE	Y	S
EDN400	A	\$ 5,304,951.85	O	\$ 5,699,378.53	\$ 394,426.68	01/23/15	01/23/15	12/27/20	Heide & Cook, LLC	HVAC Chiller Maintenance	All work performed is subject to evaluation or random periodic inspection and testing by the CA or a representative of the HIDEOE	Y	S
EDN400	A	\$ 42,750.00	O - Quarterly payments upon receipt of invoice	\$ 855,000.00	\$ 812,250.00	04/28/16	04/28/16	06/30/21	West Interactive Services, Inc. fka Synrevoice Technologies, Inc.	Mass Messaging Services	Ongoing communication with West Interactive representative to verify or request for assistance. Invoices are received quarterly upon completion of services.	N	S

Prog ID	MOF	Amount	Frequency (M/A/O)	Max Value	Outstanding Balance	Term of Contract			Entity	Contract Description	Explanation of How Contract is Monitored	POS Y/N	Category E/L/P/C/G/S/*
						Date Executed	From	To					
EDN400	A	\$ 640,751.25	M	\$ 907,730.95	\$ 266,979.70	07/28/16	08/01/16	10/31/20	Aqua Engineers, Inc.	Maintenance and Repair of Individual Wastewater Systems for Various HIDOE Schools Statewide	All work performed is subject to evaluation or random periodic inspection and testing by the CA or a representative of the HIDOE	Y	S
EDN400	A	\$ 63,000.46	M	\$ 66,236.25	\$ 3,235.79	07/25/16	08/01/16	10/31/20	International Wastewater Technologies, Inc.	Maintenance and Repair of Individual Wastewater Systems for Various HIDOE Schools Statewide	All work performed is subject to evaluation or random periodic inspection and testing by the CA or a representative of the HIDOE	Y	S
EDN400	A	\$ 504,272.80	M	\$ 766,692.99	\$ 262,420.19	08/25/16	08/25/16	10/31/20	Valley Isle Pumping, Inc.	Maintenance and Repair of Individual Wastewater Systems for Various HIDOE Schools Statewide	All work performed is subject to evaluation or random periodic inspection and testing by the CA or a representative of the HIDOE	Y	S
EDN400	A	\$ 4,409,037.98	M	\$ 4,978,539.21	\$ 569,501.23	03/29/17	04/01/17	03/31/21	Shobu's Refrigeration and Air Conditioning Inc	Provide maintenance and repair of air conditioning and ventilation equipment at various schools on Oahu.	All work performed is subject to evaluation or random periodic inspection and testing by the CA or a representative of the HIDOE	Y	S
EDN400	A	\$ 3,055,814.62	M	\$ 3,746,033.72	\$ 690,219.10	03/30/17	04/01/17	03/31/21	Honeywell International, Inc.	Provide maintenance and repair of air conditioning and ventilation equipment at various schools on Oahu.	All work performed is subject to evaluation or random periodic inspection and testing by the CA or a representative of the HIDOE	Y	S
EDN400	A	\$ 990,711.50	M	\$ 1,542,580.00	\$ 551,868.50	09/03/19	09/03/19	06/30/21	Shobu's Refrigeration and Air Conditioning Inc	M&R For AC and Ventilating Equipment at various HIDOE Schools, Leeward Oahu	All work performed is subject to evaluation or random periodic inspection and testing by the CA or a representative of the HIDOE	Y	S
EDN400	A	\$ 1,041,719.38	M	\$ 1,116,630.92	\$ 74,911.54	12/19/18	01/01/19	12/31/20	United Courier Services, Inc. dba United Armored Car Service	Courier Services for schools and offices of the DOE on the Islands of Oahu, Hawaii, Maui and Kauai	Auxiliary Services monitors work as performed & verifies invoices for payment	Y	S
EDN400	A	\$ 389,994.00	O	\$ 407,610.00	\$ 17,616.00	01/07/19	02/01/19	01/31/21	Tree Works, Inc.	Provide Palm Trimming Services on the Island of Hawaii	All work performed is subject to evaluation or random periodic inspection and testing by the CA or a representative of the HIDOE	Y	S
EDN400	A	\$ 36,738.00	O	\$ 224,428.00	\$ 187,690.00	01/07/19	02/01/19	01/31/21	Imua Landscaping Co., Inc.	Provide Palm Trimming Services on the Islands of Maui and Molokai	All work performed is subject to evaluation or random periodic inspection and testing by the CA or a representative of the HIDOE	Y	S

Prog ID	MOF	Amount	Frequency (M/A/O)	Max Value	Outstanding Balance	Term of Contract			Entity	Contract Description	Explanation of How Contract is Monitored	POS Y/N	Category E/L/P/C/G/S/*
						Date Executed	From	To					
EDN400	A	\$ 177,620.00	O	\$ 357,560.00	\$ 179,940.00	01/07/19	02/01/19	01/31/21	Imua Landscaping Co., Inc.	Provide Tree Trimming Services on the Islands of Maui, Lanai and Molokai	All work performed is subject to evaluation or random periodic inspection and testing by the CA or a representative of the HIDEOE	Y	S
EDN400	A	\$ 159,500.00	O	\$ 190,860.00	\$ 31,360.00	04/10/19	05/16/19	05/15/21	Tree Works, Inc.	Palm Tree Trimming Services - Hawaii, Dist.: I (Laupahoehoe-Waiakea), II (Naalehu-Keeau), III (Hookena-Kealakehe), IV (Paauilo-Waikoloa)	All work performed is subject to evaluation or random periodic inspection and testing by the CA or a representative of the HIDEOE	Y	S
EDN400	A	\$ 154,575.00	O	\$ 339,705.00	\$ 185,130.00	04/23/19	05/16/19	05/15/21	Smalt & Company, Inc.	Tree Trimming - Honolulu/Kailua; Central; Leeward	All work performed is subject to evaluation or random periodic inspection and testing by the CA or a representative of the HIDEOE	Y	S
EDN400	A	\$ 287,220.00	O	\$ 289,380.00	\$ 2,160.00	04/10/19	05/16/19	05/15/21	Imua Landscaping Co., Inc.	Tree Trimming Services - Big Island (District I-II)	All work performed is subject to evaluation or random periodic inspection and testing by the CA or a representative of the HIDEOE	Y	S
EDN400	A	\$ 38,106.00	O	\$ 166,636.00	\$ 128,530.00	04/23/19	05/16/19	05/15/21	Smalt & Company, Inc.	Tree Trimming Services - Kauai	All work performed is subject to evaluation or random periodic inspection and testing by the CA or a representative of the HIDEOE	Y	S
EDN400	A	\$ 202,669.49	M	\$ 354,566.30	\$ 151,896.81	05/07/19	07/01/19	06/30/21	Pacific Biodiesel Logistics, LLC	Provide maintenance service for grease traps at various schools on the island of Oahu	All work performed is subject to evaluation or random periodic inspection and testing by the CA or a representative of the HIDEOE	Y	S
EDN400	A	\$ 65,148.00	O	\$ 67,100.00	\$ 1,952.00	05/14/19	05/14/19	06/30/21	Pural Water Specialty, Co., Inc.	Fire Hydrant Maintenance & Testing of Various Schools on Oahu	All work performed is subject to evaluation or random periodic inspection and testing by the CA or a representative of the HIDEOE	Y	S
EDN400	A	\$ 68,757.00	M	\$ 96,804.00	\$ 28,047.00	05/31/19	07/01/19	06/30/21	United Courier Services, Inc. dba United Armored Car Service	Provide Courier Services for schools and offices on the Island of Molokai	Auxiliary Services monitors work as performed & verifies invoices for payment	Y	S

Prog ID	MOF	Amount	Frequency (M/A/O)	Max Value	Outstanding Balance	Term of Contract			Entity	Contract Description	Explanation of How Contract is Monitored	POS Y/N	Category E/L/P/C/G/S/*
						Date Executed	From	To					
EDN400	A	\$ 80,835.00	M	\$ 130,650.00	\$ 49,815.00	05/15/19	05/14/19	06/30/21	Maui Fire Control, Inc.	Maintenance of Fire Extinguishers, Fire Hose Cabinets, Standpipe Systems, Fire Sprinkler Systems on Maui, Molokai & Lanai	DAGS Hawaii Engineers monitors work as performed & verifies invoices for payments	Y	S
EDN400	B	\$ 46,275.00	O	\$ 600,000.00	\$ 553,725.00	07/31/19	07/31/19	08/31/21	Blue Line Solutions, LLC	Prepare or improve the DOE's ability to effectively react to emergency situations	SSEP has a schedule of training dates and there is ongoing communication between contractor and SSEPB	Y	S
EDN400	A	\$ 25,468.00	O	\$ 41,946.00	\$ 16,478.00	07/29/19	07/29/19	06/30/21	Big Island Safety Equipment, Inc. dba Hilo Fire Extinguishers	Maintenance of Fire Protection Equipment at Various Schools on the Island of Hawaii	DAGS Hawaii Engineers monitors work as performed & verifies invoices for payments	Y	S
EDN400	A	\$ 526,221.68	M	\$ 1,279,069.60	\$ 752,847.92	09/30/19	10/01/19	09/30/21	Oahu Air Conditioning Service, Inc.	Maintenance, WT, EMCS Svcs. of A/C & Ventilation Eqp on Maui	DAGS Hawaii Engineers monitors work as performed & verifies invoices for payments	Y	S
EDN400	N	\$ 185,864.00	O - SFSB processed invoice for payment upon receipt at the start of the contract	\$ 185,864.00	\$ -	05/01/20	05/01/20	12/31/20	N. Harris Computer Corporation	School Nutrition Enterprise System (SNES)	One-time payment for the initial start of this contract	N	S
EDN400	A	\$ 168,355.28	M	\$ 113,904.00	\$ (54,451.28)	11/26/19	12/01/19	11/30/20	Island Refuse, Inc.	Furnish Refuse Collection and Disposal Services for Schools of the Hawaii Department of Education and Various State Buildings on the Island of Molokai	DAGS Hawaii Engineers monitors work as performed & verifies invoices for payments	Y	S
EDN400	N	\$ 88,612.50	O - SFSB processes payment upon receipt of invoice after work is completed	\$ 1,232,450.00	\$ 1,143,837.50	04/13/20	04/13/20	03/31/21	Culinary Solution Centers, LLC	Recipe Standardization and Training for HDOE	Awarded vendor is in contact via email with 2 other supervisors as to the progress of the work they are doing. When invoice is received; supervisor will review, sign and verify work was completed before submitting for payment.	Y	S

Prog ID	MOF	Amount	Frequency (M/A/O)	Max Value	Outstanding Balance	Term of Contract			Entity	Contract Description	Explanation of How Contract is Monitored	POS Y/N	Category E/L/P/C/G/S/*
						Date Executed	From	To					
EDN400	A	\$ 9,700.00	O	\$ 117,580.00	\$ 107,880.00	02/25/20	03/01/20	02/28/21	Doonwood Engineering, Inc.	R&M Pump & Piping on Oahu	All work performed is subject to evaluation or random periodic inspection and testing by the CA or a representative of the HIDEOE	Y	S
EDN400	A	\$ 8,184.96	O	\$ 16,235.00	\$ 8,050.04	06/23/20	06/23/20	04/30/21	Pural Water Specialty Co., Inc.	Inspection, Testing, Certification & Repair of Backflow Prevention for DOE Statewide & State Public Facilities on Oahu and Maui	All work performed is subject to evaluation or random periodic inspection and testing by the CA or a representative of the HIDEOE	Y	S
EDN400	A	\$ -	M	\$ 2,238,321.60	\$ 2,238,321.60	03/06/20	03/06/20	09/30/21	Arekat Pacific Security, Inc. dba API Security, Inc.	Security services at various schools and offices Statewide. Services may be required during both normal school/office hours and after school/office hours	All work performed is subject to evaluation or random periodic inspection and testing by the CA or a representative of the HIDEOE	Y	S
EDN400	A	\$ -	O	\$ 603,666.00	\$ 603,666.00	06/17/20	06/17/20	05/15/21	Imua Landscaping Co., Inc.	Tree trimming services for various HIDEOE schools and other sites	All work performed is subject to evaluation or random periodic inspection and testing by the CA or a representative of the HIDEOE	Y	S
EDN400	A	\$ -	O	\$ 163,388.00	\$ 163,388.00	08/18/20	08/18/20	05/15/21	Smalt & Company, Inc.	Tree trimming services for various HIDEOE schools and other sites	All work performed is subject to evaluation or random periodic inspection and testing by the CA or a representative of the HIDEOE	Y	S
EDN400	A	\$ 106,450.00	O	\$ 303,670.00	\$ 197,220.00	06/17/20	06/17/20	05/15/21	Tahitian Tree Service, Inc.	Tree trimming services for various HIDEOE schools and other sites	All work performed is subject to evaluation or random periodic inspection and testing by the CA or a representative of the HIDEOE	Y	S
EDN400	A	\$ -	O	\$ 100,554.00	\$ 100,554.00	06/03/20	06/03/20	04/01/21	Imua Landscaping Co., Inc.	Palm trimming and pruning services for various schools and other sites	All work performed is subject to evaluation or random periodic inspection and testing by the CA or a representative of the HIDEOE	Y	S
EDN400	A	\$ -	O	\$ 126,210.00	\$ 126,210.00	08/18/20	08/18/20	04/01/21	Smalt & Company, Inc.	Palm trimming and pruning services for various schools and other sites	All work performed is subject to evaluation or random periodic inspection and testing by the CA or a representative of the HIDEOE	Y	S
EDN400	A	\$ 52,874.55	M	\$ 598,129.32	\$ 545,254.77	09/04/20	09/04/20	06/30/21	Garden Isle Disposal, Inc.	Furnish Refuse Collection and Disposal Services for Various Schools on the Island of Kauai	DAGS Hawaii Engineers monitors work as performed & verifies invoices for payments	Y	S

Prog ID	MOF	Amount	Frequency (M/A/O)	Max Value	Outstanding Balance	Term of Contract			Entity	Contract Description	Explanation of How Contract is Monitored	POS Y/N	Category E/L/P/C/G/S/*
						Date Executed	From	To					
EDN400	A	\$ 19,802.51	M	\$ 68,750.00	\$ 48,947.49	06/26/20	06/26/20	06/30/21	Doonwood Engineering, Inc.	Maintenance and Repair of Standby Generators	The contractor must submit an inspection/maintenance service checklist with the monthly invoice. All work performed is subject to evaluation or random periodic inspection/testing by the CA or representative of the HIDEO.	Y	S
EDN400	A	\$ 23,125.00	O	\$ 33,558.00	\$ 10,433.00	07/07/20	07/07/20	05/31/21	Pural Water Specialty, Inc.	Inspection, Testing, Certification & Repair of Backflow Prevention for DOE Statewide on Oahu	All work performed is subject to evaluation or random periodic inspection and testing by the CA or a representative of the HIDEO	Y	S
EDN400	A	\$ -	O	\$ 38,723.04	\$ 38,723.04	07/07/20	07/07/20	05/31/21	Alaka'i Mechanical Corporation	Inspection, Testing, Certification & Repair of Backflow Prevention for DOE Statewide on Oahu	All work performed is subject to evaluation or random periodic inspection and testing by the CA or a representative of the HIDEO	Y	S
EDN400	A	\$ 17,661.95	O	\$ 89,786.30	\$ 72,124.35	07/30/20	07/30/20	06/30/21	Pacific Biodiesel Logistics, LLC	Grease Trap Maintenance for the Island of Hawaii	DAGS Hawaii Engineers monitors work as performed & verifies invoices for payments	Y	S
EDN400	A	\$ -	O	\$ 47,802.39	\$ 47,802.39	07/24/20	07/24/20	01/19/21	Gill Island Motors, Inc. dba Windward Ford of Hawaii	Furnish and Deliver Two Flatbed Trucks for the HIDEO, Office of Facilities and Operations (OFO), Facilities Maintenance Branch (FMB)	No monitoring involved. This contract is for the purchase of one flatbed truck which is expected to be delivered in January 2021.	N	G
EDN400	A	\$ 159,913.39	M	\$ 2,502,082.02	\$ 2,342,168.63	09/04/20	10/01/20	09/30/21	West Oahu Aggregate Co., Inc.	Provide Refuse and Recycling Collection and Disposal Services for Various Schools on Oahu (all districts)	All work performed is subject to evaluation or random periodic inspection and testing by the CA or a representative of the HIDEO	Y	S
EDN400	A	\$ -	O	\$ 102,432.10	\$ 102,432.10	09/01/20	09/01/20	07/31/21	Alliance Fire Safety Specialists, LLC	Fire Protection Equipment - Leeward District	All work performed is subject to evaluation or random periodic inspection and testing by the CA or a representative of the HIDEO	Y	S

Prog ID	MOF	Amount	Frequency (M/A/O)	Max Value	Outstanding Balance	Term of Contract			Entity	Contract Description	Explanation of How Contract is Monitored	POS Y/N	Category E/L/P/C/G/S/*
						Date Executed	From	To					
EDN400	A	\$ -	O - SFSM processes payment upon receipt of invoice	\$ 141,950.00	\$ 141,950.00	09/18/20	09/18/20	07/31/21	New Horizons Enterprises, Inc. dba Makoa Trucking & Services	Provide Pick-Up and Delivery Services for Food and Food Service Products (Frozen/Chilled and Non-Refrigerated) to the Hawaii Department of Education (HIDOE) Schools on the Island of Molokai	Cafeteria managers are invoiced directly from Makoa Trucking and they process directly thru FMS.	Y	S
EDN300	A	\$ 726,248.00	A	\$ 726,248.00	\$ -	01/22/13	01/22/13	12/31/20	KEV Group Inc.	Local School Fund System Annual Fee	Regular meetings with vendor to track progress.	Y	S
EDN300	A	\$ 1,640,000.00	M - or per invoice	\$ 1,640,000.00	\$ -	11/21/16	12/01/16	11/30/20	KMH LLP	Auditing of Form G-2s (PE/D E17-231)	Internal tracking of G-2 sent over and reports sent to DAGS cross-checked with vendor reports	Y	S
EDN300	A	\$ 35,811.51	O - upon invoice	\$ 100,000.00	\$ 2,712.04	07/05/18	07/05/18	06/30/21	Andrew L. Stipdonk	Assistance and Support for the Development of the Financial Reporting System (FRS)	Review deliverables - maintenance of FRS reports and/or new/improved FRS reports.	Y	S
EDN400	A	\$ 174,120.00	O - 2 payments	\$ 274,255.00	\$ 100,135.00	01/26/18	01/26/18	09/30/20	Dynamic Internet Solutions, LLC	Maintenance and Hosting Services for HCNP IT Solution	HCNP's IT specialist constantly reviews HCNP_S to looks for flaws in the system.	Y	S
EDN300	A	\$ 13,754.13	M	\$ 36,360.00	\$ 22,605.87	12/29/17	12/29/17	12/29/22	Xerox	Lease of Xerox machine	Verify the monthly Xerox invoice and machine meter read	N	E
EDN400	N	\$ 77,081.77	M	\$ 416,707.00	\$ 339,625.23	12/01/18	12/01/18	11/30/24	Castle & Cooke	Monthly Rent	Verify the monthly invoice	N	L
EDN400	N	\$ -	O	\$ 42,000.00	\$ 42,000.00	02/27/19	02/27/19	08/31/21	University of Hawaii Kapiolani Community College	Hawaii CACFP Meal Service Training Program	CACFP Program Specialist reviews training events and materials	Y	S
EDN300	A	\$ 165,000.00	O - payment is rendered upon delivery of services	\$ 215,000.00	\$ 50,000.00	11/28/18	11/28/18	03/31/21	CutCom Software Inc. dba AppArmor	Provide a Mobile Anti-Bully Application Allowing Students to report Incidents Anonymously	Status reports; review of each completed deliverable; review and verification of invoices for services rendered.	N	G, S
EDN300	A	\$ 869,445.00	O - payment is rendered upon delivery of services	\$ 1,194,650.00	\$ 325,205.00	05/06/16	05/06/16	06/30/21	CSM Consulting, Inc.	E-Rate Consultation Services	Monthly status reports; review and verification of invoices for services rendered; compliance and deliverables aligned to eRate timeline	N	S
EDN300 EDN400	A	\$ 3,588,221.81	O - as services are delivered	\$ 9,000,000.00	\$ 5,411,778.19	01/04/18	01/04/18	01/31/21	Hawaiian Telcom Services Company, Inc.	Network and Infrastructure in the Areas of Routing, Switching, Wireless, Unified Communications (Voice IP) and Data Center Technologies	Status reports, job completion reports and final site inspections and punch lists.	N	S

Prog ID	MOF	Amount	Frequency (M/A/O)	Max Value	Outstanding Balance	Term of Contract			Entity	Contract Description	Explanation of How Contract is Monitored	POS Y/N	Category E/L/P/C/G/S/*
						Date Executed	From	To					
EDN300	A, B	\$ 3,820,014.25	M	\$ 4,847,056.33	\$ 1,027,042.08	06/09/17	06/09/17	03/29/21	Business Solution Technologies, Inc.	Technical Support Services for Human Resource Management System	Review of monthly invoices, status reports, record of tasks performed for contract	N	S
EDN300	A	\$ 352,296.00	O - upon completion of deliverables	\$ 427,479.71	\$ 75,183.71	06/06/16	06/06/16	12/20/20	Referentia Systems Incorporated	Enterprise Security Assessment and Action Plan	Monthly status reports; reports for each deliverable; review and verification of invoices for services rendered	N	S
EDN300	A	\$ 1,015,758.72	M	\$ 1,174,658.00	\$ 158,899.28	03/24/16	04/01/16	06/30/21	Eworld Enterprise Solutions Inc.	Project Management Assistance	Monthly status reports; reports for each deliverable; review and verification of invoices for services rendered	N	S
EDN300	A	\$ 1,117,145.00	M	\$ 1,607,926.37	\$ 490,781.37	09/20/16	09/20/16	06/30/22	World Wide Technology, Inc.	Purchase a comprehensive Information Technology Service Management tool (ITSM Help Desk) software and associated implementation services	Project tracking matrix to compare work done/deliverables to RFP requirements; weekly status	N	G, S
EDN300	A	\$ 586,610.00	M	\$ 1,090,139.40	\$ 503,529.40	11/03/16	11/03/16	06/30/21	Eworld Enterprise Solutions Inc.	Project Management services for IT Service Management (ITSM) System for DOE	Monthly status reports; reports for each deliverable; review and verification of invoices for services rendered	N	S
EDN300	A	\$ 7,338,776.54	M	\$ 7,368,666.62	\$ 29,890.08	09/29/00	09/27/00	03/31/21	Kronos Inc	Timekeeper software support	Issue resolution log/resolution of problems	N	S
EDN100	A, P	\$ 324,947.52	O - upon invoice	\$ 324,947.52	\$ -	02/13/18	02/13/18	01/31/21	DataHouse Consulting, Inc.	Web Technology assistance for Budget IT System	Contract monitored by a program manager	Y	S
EDN300	A	\$ 560,175.00	M	\$ 1,120,350.00	\$ 560,175.00	03/17/20	03/17/20	03/31/21	Amplified IT LLC	Google to Google Professional Services Support	Status reports and scheduled meetings with vendor; review of invoices for services rendered	Y	S
EDN300	B	\$ 287,336.02	M	\$ 350,000.00	\$ 62,663.98	03/06/20	03/06/20	02/28/21	Business Solution Technologies, Inc.	FMS Modernization Support Services	Review of monthly invoices, record of tasks performed for contract	Y	S
EDN400	A	\$ -	O - upon completion of deliverables	\$ 60,000.00	\$ 60,000.00	06/08/20	07/01/20	06/30/21	Referentia Systems Incorporated	IT security assessment, Mitigations, and security consultation at schools and state offices	Final reports upon completion of assessments; review of invoice for services rendered	N	S
EDN300	A	\$ -	O - upon invoice	\$ 214,430.00	\$ 214,430.00	05/08/20	05/08/20	02/28/21	Microsoft Corporation	To Provide Microsoft Premier Support Services for Hawaii Department of Education	Review of monthly invoices, record of tasks performed for contract	Y	S
EDN300	A, B	\$ 218,542.78	O - upon invoice	\$ 218,542.78	\$ -	01/08/20	01/08/20	12/31/20	Hoike Networks Inc., dba Pacxa	Oracle Software Licenses and Software Maintenance Support - January	Contract is for goods (i.e., licenses); therefore, there is no work to monitor other than delivery of licenses	N	G

Prog ID	MOF	Amount	Frequency (M/A/O)	Max Value	Outstanding Balance	Term of Contract			Entity	Contract Description	Explanation of How Contract is Monitored	POS Y/N	Category E/L/P/C/G/S/*
						Date Executed	From	To					
EDN300	A	\$ 87,323.70	O - upon invoice	\$ 87,323.70	\$ -	06/04/20	07/02/20	07/01/21	Hoike Networks Inc., dba Pacxa	Oracle Software Licenses and Software Maintenance Support - July	Contract is for goods (i.e., licenses); therefore, there is no work to monitor other than delivery of licenses	N	G
EDN100	C	\$ 177,866.36	O - as equipment orders are delivered	\$ 22,961,771.55	\$ 22,783,905.19	06/01/20	07/01/20	06/30/22	Hawaiian Telcom, Inc.	To Furnish E-Rate Eligible Network Equipment	Status reports on equipment orders reports, shipping information and invoices.	N	G
EDN300	N	\$ 356,472.00	M	\$ 1,726,230.88	\$ 1,369,758.88	07/01/20	07/01/20	06/30/21	Hawaiian Telcom Services Company, Inc.	Establish and Support of a HIDEO Ohana Help Desk	Scheduled status meetings with vendor; review and verification of invoices for services rendered	N	S
EDN100	A	\$ 2,303,066.00	M - as work/reports/data processing is completed for a variety of accountability projects	\$ 3,818,150.00	\$ 1,515,084.00	11/24/15	12/01/15	11/30/20	DataHouse Consulting, Inc.	Accountability System, Project Management, Data Analysis, Processing and Reporting	Regular meetings are scheduled, usually twice a month, as report deliverables are due.	Y	S
EDN100 EDN200	N, A	\$ 1,284,731.00	O - quarterly	\$ 2,984,500.00	\$ 1,699,769.00	06/15/18	06/15/18	06/30/21	ACT, Inc.	Provide a College Readiness Assessment System	Weekly webinar management meetings; invoices reconciled with project management plan	N	G/S
EDN100 EDN200	N, A	\$ 3,094,055.00	O - quarterly	\$ 4,588,853.00	\$ 1,494,798.00	07/06/18	07/06/18	06/30/21	American Institutes for Research in the Behavioral Sciences	To develop and Implement the Hawaii State Alternate Assessment for the Hawaii Department of Education	Weekly webinar management meetings; invoices reconciled with project management plan	N	G/S
EDN100 EDN200	N, A	\$ 1,387,500.00	O - quarterly	\$ 1,151,500.00	\$ (236,000.00)	06/07/17	06/07/17	06/30/21	Caveon, LLC	Develop/Implement full service test security enhancements	Weekly webinar management meetings; invoices reconciled with project management plan	N	G/S
EDN200	A	\$ 270,000.00	O - quarterly	\$ 300,000.00	\$ 30,000.00	05/22/17	05/22/17	06/30/21	MetaMetrics, Inc	Develop/Implement lexile and quantile measurements for the CCSS Assessments for Reading and Math for HIDEO	Quarterly teleconference management meetings	N	G/S
EDN100 EDN200	N, A	\$ 4,638,588.00	O - quarterly	\$ 6,079,275.00	\$ 1,440,687.00	06/26/17	06/26/17	06/30/21	UH on behalf of its College of Education	Develop/Implement Assessments in the Hawaiian Language for HIDEO	Bi-weekly webinar management meetings; invoices reconciled with project management plan	N	G/S
EDN300	P	\$ 2,939,840.00	O	\$ 3,477,365.00	\$ 537,525.00	05/24/16	05/24/16	09/30/20	UH P-20	To Implement 2015 SLDS College and Career Project Outcome	Monitored by monthly status reports/project plan updates issued through UH P20 to HIDEO.	N	S

Prog ID	MOF	Amount	Frequency (M/A/O)	Max Value	Outstanding Balance	Term of Contract			Entity	Contract Description	Explanation of How Contract is Monitored	POS Y/N	Category E/L/P/C/G/S/*
						Date Executed	From	To					
EDN100	N	\$ 222,500.00	O - payments made in January and June of each year	\$ 299,150.00	\$ 76,650.00	05/22/17	05/22/17	06/30/21	Public Consulting Group, Inc.	Web-Based Document Mgmt System for Title I Compliance	Quarterly phone conferences between PCG and Lisa related to the document management system; regular emails with PCG about resolving system issues.	N	S
EDN500	B/W	\$ 4,141,545.00	M	\$ 10,758,000.00	\$ 6,616,455.00	07/03/17	07/03/17	06/30/21	Kamaaina Care, Inc. dba Kamaaina Kids	After School (A+) Program	Monitored by District A+ Offices semesterly site visits and by State A+ Office (annually 3 sites per district)	N	S
EDN500	B/W	\$ 29,570.00	M	\$ 45,000.00	\$ 15,430.00	07/03/17	07/03/17	06/30/21	DREAM Co.	After School (A+) Program	Monitored by District A+ Offices semesterly site visits and by State A+ Office (annually 3 sites per district)	N	S
EDN500	B/W	\$ 502,284.00	M	\$ 549,000.00	\$ 46,716.00	07/03/17	07/03/17	06/30/21	Moliliili Community Center	After School (A+) Program	Monitored by District A+ Offices semesterly site visits and by State A+ Office (annually 3 sites per district)	N	S
EDN500	B/W	\$ -	M	\$ 456,000.00	\$ 456,000.00	07/19/17	07/19/17	06/30/21	Maui Family YMCA	After School (A+) Program	Monitored by District A+ Offices semesterly site visits and by State A+ Office (annually 3 sites per district)	N	S
EDN500	B/W	\$ 1,969,869.00	M	\$ 3,635,935.00	\$ 1,666,066.00	7/18/2016	7/25/2016	06/30/21	Kamaaina Care, Inc. dba Kamaaina Kids	Childcare services for students attending A-Plus Afterschool Program	Monitored by District A+ Offices semesterly site visits and by State A+ Office (annually 3 sites per district)	N	S
EDN500	B/W	\$ 250,570.00	M	\$ 2,268,515.00	\$ 2,017,945.00	7/18/2016	8/1/2016	06/30/21	YMCA of Honolulu	Childcare services for students attending A-Plus Afterschool Program	Monitored by District A+ Offices semesterly site visits and by State A+ Office (annually 3 sites per district)	N	S
EDN500	B/W	\$ 3,766,769.00	M	\$ 5,223,000.00	\$ 1,456,231.00	07/03/17	07/03/17	06/30/21	YMCA of Honolulu	After School (A+) Program	Monitored by District A+ Offices semesterly site visits and by State A+ Office (annually 3 sites per district)	N	S
EDN100	N	\$ 225,000.00	O - per contract payment schedule	\$ 300,000.00	\$ 75,000.00	02/13/17	02/13/17	12/31/20	UH-College of Education	Cooperative Agreement between the Hawaii Department of Education, and University of Hawaii, College of Education for the Hawaii Afterschool Alliance	HAA submitted reports and met with CEB as per contract requirements.	N	S
EDN500	B/W	\$ 507,825.00	M	\$ 822,000.00	\$ 314,175.00	06/15/18	06/15/18	06/30/21	YMCA of Honolulu	After School Child Care (A+) Program	Monitored by District A+ Offices semesterly site visits and by State A+ Office (annually 3 sites per district)	N	S

Prog ID	MOF	Amount	Frequency (M/A/O)	Max Value	Outstanding Balance	Term of Contract			Entity	Contract Description	Explanation of How Contract is Monitored	POS Y/N	Category E/L/P/C/G/S/*
						Date Executed	From	To					
EDN500	B/W	\$ 81,225.00	M	\$ 1,902,000.00	\$ 1,820,775.00	06/15/18	06/15/18	06/30/21	Kamaaina Kids	After School Child Care (A+) Program	Monitored by District A+ Offices semesterly site visits and by State A+ Office (annually 3 sites per district)	N	S
EDN500	B/W	\$ 750,120.00	M	\$ 1,016,000.00	\$ 265,880.00	06/15/18	06/15/18	06/30/21	Maui Family YMCA	After School Child Care (A+) Program	Monitored by District A+ Offices semesterly site visits and by State A+ Office (annually 3 sites per district)	N	S
EDN300 EDN300	A, P	\$ 5,589,442.00	O - upon completion of deliverables	\$ 5,899,841.64	\$ 310,399.64	11/23/09	11/23/09	11/30/21	Hoonuit I, LLC (formerly VersiFit Technologies, LLC)	EdVantage Datawarehouse Software	Approval of deliverables and review of invoices to verify services rendered	N	G, S
EDN500	B/W	\$ 1,076,001.00	M	\$ 3,586,000.00	\$ 2,509,999.00	07/01/19	07/01/19	06/30/21	Kamaaina Care dba Kamaaina Kids	After School Child Care (A+) Program	Monitored by District A+ Offices semesterly site visits and by State A+ Office (annually 3 sites per district)	N	S
EDN500	B/W	\$ 411,000.00	M	\$ 411,000.00	\$ -	07/01/19	07/01/19	06/30/21	Young Men's Christian Association of Honolulu, dba YMCA of Honolulu	After School Child Care (A+) Program	Monitored by District A+ Offices semesterly site visits and by State A+ Office (annually 3 sites per district)	N	S
EDN200	A	\$ 435,894.17	O - after services rendered, 6 payments	\$ 964,029.50	\$ 528,135.33	04/18/19	04/18/19	06/30/21	Panorama Education, Inc.	Student Perception Survey	Weekly webinar management meetings, invoices reconciled with project plan	Y	S
EDN100 EDN200	N, A	\$ 4,979,868.39	O - quarterly	\$ 19,435,759.00	\$ 14,455,890.61	09/04/19	09/04/19	09/30/22	American Institutes for Research in the Behavioral Sciences	Develop and Implement Smarter Balanced Assessment System (Ref: MAAC RFP No. 2019-13)	Weekly webinar management meetings; invoices reconciled with project management plan	N	G/S
EDN100	N	\$ 185,070.00	O - after services rendered	\$ 282,580.00	\$ 97,510.00	03/01/19	03/01/19	08/31/21	Buck Institute for Education	Project Based Learning and Assessment Strategies	All work is subject to evaluation based upon participants feedback. Regularly meetings are scheduled.	N	S
EDN100 EDN200	A	\$ 89,593.74	O - after services rendered, 6 payments, invoices reconciled with project plan	\$ 119,949.74	\$ 30,356.00	08/26/19	08/26/19	12/31/20	Opinion Interactive, LLC dba Spotlight Education	Purchase of proprietary software that customizes student assessment results, provides suggested resources and/or supports, and electronically delivers the interactive information to the parent(s) of the students.	Weekly webinar management meetings	Y	S

Prog ID	MOF	Amount	Frequency (M/A/O)	Max Value	Outstanding Balance	Term of Contract			Entity	Contract Description	Explanation of How Contract is Monitored	POS Y/N	Category E/L/P/C/G/S/*
						Date Executed	From	To					
EDN100	A	\$ -	M - upon receipt of original invoice and completion of services and/or deliverables	\$ 32,000.00	\$ 32,000.00	06/05/20	06/05/20	04/30/21	National Centers for the Improvement of Educational Assessment	Production of School Year Growth Results, analyses, Data sets and reports.	Review of invoices and verification of services and/or deliverables	Y	S
EDN500	B/W	\$ -	M	\$ 1,354,000.00	\$ 1,354,000.00	06/09/20	07/01/20	06/30/21	YMCA of Honolulu	After School Child Care (A+) Program	Monitored by District A+ Offices semesterly site visits and by State A+ Office (annually 3 sites per district)	N	S
EDN500	B/W	\$ -	M	\$ 2,081,000.00	\$ 2,081,000.00	06/09/20	07/01/20	06/30/21	Kamaaina Care, Inc. dba Kamaaina Kids	After School Child Care (A+) Program	Monitored by District A+ Offices semesterly site visits and by State A+ Office (annually 3 sites per district)	N	S
EDN100	A	\$ 407,500.00	O	\$ 655,250.00	\$ 247,750.00	06/30/17	06/30/17	11/30/20	Healthmaster Holdings, LLC dba Healthmaster	Web-Hosted Suite of Software Applications for school electronic health records	Contract monitored by a program manager	N	S
EDN150	A	\$ 4,417,449.00	O	\$ 6,539,975.00	\$ 2,122,526.00	07/17/17	07/17/17	06/30/21	Stetson & Associates, Inc.	External Services Provider(s) - Statewide Professional Development and Support for Special Education Inclusion.	Monthly communication with ESB leadership (updates on deliverables), site visit written summaries to schools, annual summary of progress (system and school level)	Y	S
EDN150	A	\$ 311,160.00	A	\$ 388,950.00	\$ 77,790.00	11/17/16	11/17/16	05/31/21	Richards Lindsay & Martin, LLP	Training & Implementation of Section 504 & Ch. 61 for the HIDOE	Provider submits reports and schedules of training	Y	S
EDN150	A, N	\$ 787,320.00	M	\$ 1,049,760.00	\$ 262,440.00	07/26/17	07/01/17	06/30/21	EPIC Foundation	Surrogate Parent Services	Monthly reports of providers and students	Y	S
EDN150	N	\$ 255,000.00	A	\$ 340,000.00	\$ 85,000.00	03/21/17	03/21/17	12/31/20	Resolutions in Special Education, Inc.	Provide technical assistance, consultation, and training pertaining to the IDEA and Chapter 60 to the DOE and deputy attorneys general	Evaluation of training provided and sign-in sheets of participants.	Y	S
EDN150	A	\$ 13,525,054.00	M	\$ 24,095,492.00	\$ 10,570,438.00	06/04/14	07/01/14	12/31/20	EBS	Speech Language Pathologist (SLP)	Sign-in sheets attached to invoices which are matched to services provided per month. Services are documented in eCSSS by provider & subject to random checks by EBS supervisor, district &/or state program manager	Y	S

Prog ID	MOF	Amount	Frequency (M/A/O)	Max Value	Outstanding Balance	Term of Contract			Entity	Contract Description	Explanation of How Contract is Monitored	POS Y/N	Category E/L/P/C/G/S/*
						Date Executed	From	To					
EDN150	A	\$ 3,946,086.00	M	\$ 4,224,853.60	\$ 278,767.60	06/04/14	07/01/14	12/31/20	EBS	Physical Therapy (PT)	Sign-in sheets attached to invoices which are matched to services provided per month. Services are documented in eCSSS by provider & subject to random checks by EBS supervisor, district &/or state program manager	Y	S
EDN150	A	\$ 9,999,646.00	M	\$ 10,884,496.00	\$ 884,850.00	06/04/14	07/01/14	12/31/20	EBS	Occupational Therapy (OT)	Sign-in sheets attached to invoices which are matched to services provided per month. Services are documented in eCSSS by provider & subject to random checks by EBS supervisor, district &/or state program manager	Y	S
EDN150	A	\$ 792,517.00	O - invoices paid as they come	\$ 2,679,237.00	\$ 1,886,720.00	10/16/17	10/16/17	06/30/21	MTX of Southwest Florida, Inc.	Special Education and Related Services for Identified Incarcerated Students under the Age of Twenty-Two	Weekly monitoring of provider services & invoices	Y	S
EDN150	A	\$ 1,938,852.00	O	\$ 3,285,572.00	\$ 1,346,720.00	09/12/18	09/12/18	06/30/21	University of Hawaii, College of Education	The University of Hawaii-Manoa, College of Education (UHMCOE) shall expend funds to recruit, screen, enroll and award tuition stipends to Hawaii Department of Education employees pursuing certification in behavior analysis.	Quarterly meetings and reports	Y	S
EDN150	P	\$ 789,885.00	M	\$ 789,884.84	\$ (0.16)	10/14/15	10/14/15	09/30/20	University of Hawaii	Evaluation services for Project HI AWARE Grant	Contract monitored by a program manager	N	S
EDN100	P	\$ 48,333.00	M	\$ 48,333.16	\$ 0.16	10/14/15	10/14/15	09/30/20	University of Hawaii	Evaluation services for Project HI AWARE School Climate Transformation Grant	Contract monitored by a program manager	N	S
EDN200	P	\$ 85,460.00	O	\$ 130,918.00	\$ 45,458.00	04/03/18	04/03/18	10/31/21	Board of Regents of the University of Wisconsin System, on behalf of the University of Wisconsin-Madison's Wisconsin Center for Education Research	Provide evaluation services on data and outcomes related to the "Using Data to Improve Outcomes of Hawaii's Asian American and Pacific Islander English Language Learners' grant awarded by the U.S. Department of Education, award number T365D160006	Contract monitored by a program manager	N	S
EDN200	A	\$ 931,529.00	M	\$ 2,000,000.00	\$ 1,068,471.00	06/30/16	07/01/16	06/30/21	QBS. Inc.	Certified Instructor Training on Positive Behavioral Interventions and Support	Review of invoices to verify services rendered	N	S

Prog ID	MOF	Amount	Frequency (M/A/O)	Max Value	Outstanding Balance	Term of Contract			Entity	Contract Description	Explanation of How Contract is Monitored	POS Y/N	Category E/L/P/C/G/S/*
						Date Executed	From	To					
EDN200	P	\$ 60,000.00	O	\$ 99,000.00	\$ 39,000.00	09/01/17	09/01/17	10/31/21	University of Hawaii on behalf of Hawaii P-20	To Support and Implement the Asian American and Pacific Islander Data Disaggregation Project for the HIDOE	Contract monitored by a program manager	N	S
EDN200 EDN300	P, A	\$ 19,286,388.61	M	\$ 19,286,388.61	\$ -	09/13/11	09/13/11	06/30/21	DataHouse Consulting, Inc.	Hosting, Development and Maintenance of eCSSS	Monthly review of invoices to verify services rendered; weekly status meetings; reconciliation of tasks worked on to invoice and contract; documentation of design build.	N	S
EDN100 EDN300	A	\$ 7,600,147.00	O - payment is rendered upon delivery of services	\$ 11,204,155.06	\$ 3,604,008.06	03/27/15	03/27/15	03/26/21	Infinite Campus, Inc.	Student Information System Replacement	Status reports; review of each completed deliverable; review and verification of invoices for services rendered.	N	G, S
EDN150	A, N	\$ 6,984,146.00	M	\$ -	\$ -	08/30/16	09/01/16	06/30/21	Alaka'i Na Keiki, Inc.	Paraprofessional Support Services	To ensure quality, the provider participates in contract monitoring as requested by HIDOE, but in no event less than annually. This contract monitoring focuses on compliance with the HIDOE monitoring protocol and compliance with all administrative and fiscal aspects of the Contract.	Y	S
EDN150	A, N	\$ 9,184,583.00	M	\$ -	\$ -	08/16/16	09/01/16	06/30/21	BAYADA Home Care	Paraprofessional Support Services	To ensure quality, the provider participates in contract monitoring as requested by HIDOE, but in no event less than annually. This contract monitoring focuses on compliance with the HIDOE monitoring protocol and compliance with all administrative and fiscal aspects of the Contract.	Y	S

Prog ID	MOF	Amount	Frequency (M/A/O)	Max Value	Outstanding Balance	Term of Contract			Entity	Contract Description	Explanation of How Contract is Monitored	POS Y/N	Category E/L/P/C/G/S/*
						Date Executed	From	To					
EDN150	A, N	\$ 19,958.00	O	\$ -	\$ -	08/23/16	09/01/16	06/30/21	CARE Hawaii, Inc.	Paraprofessional Support Services	To ensure quality, the provider participates in contract monitoring as requested by HIDOE, but in no event less than annually. This contract monitoring focuses on compliance with the HIDOE monitoring protocol and compliance with all administrative and fiscal aspects of the Contract.	Y	S
EDN150	A, N	\$ 32,150,617.00	M	\$ -	\$ -	08/16/16	09/01/16	06/30/21	Hawaii Behavioral Health, LLC dba HBH	Paraprofessional Support Services	To ensure quality, the provider participates in contract monitoring as requested by HIDOE, but in no event less than annually. This contract monitoring focuses on compliance with the HIDOE monitoring protocol and compliance with all administrative and fiscal aspects of the Contract.	Y	S
EDN150	A, N	\$ 23,350,862.00	M	\$ -	\$ -	08/16/16	09/01/16	06/30/21	RCM Technologies (USA), Inc. dba RCM Health Care Services	Paraprofessional Support Services	To ensure quality, the provider participates in contract monitoring as requested by HIDOE, but in no event less than annually. This contract monitoring focuses on compliance with the HIDOE monitoring protocol and compliance with all administrative and fiscal aspects of the Contract.	Y	S
EDN150	A, N	\$ 2,125.00	O	\$ -	\$ -	08/30/16	09/01/16	06/30/21	Alaka'i Na Keiki, Inc.	Behavior Instructional Support Services (BISS)	To ensure quality, the provider participates in contract monitoring as requested by HIDOE, but in no event less than annually. This contract monitoring focuses on compliance with the HIDOE monitoring protocol and compliance with all administrative and fiscal aspects of the Contract.	Y	S

Prog ID	MOF	Amount	Frequency (M/A/O)	Max Value	Outstanding Balance	Term of Contract			Entity	Contract Description	Explanation of How Contract is Monitored	POS Y/N	Category E/L/P/C/G/S/*
						Date Executed	From	To					
EDN150	A, N	\$ 581,540.00	M	\$ -	\$ -	08/17/16	09/01/16	06/30/21	BAYADA Home Care	Behavior Instructional Support Services (BISS)	To ensure quality, the provider participates in contract monitoring as requested by HIDOE, but in no event less than annually. This contract monitoring focuses on compliance with the HIDOE monitoring protocol and compliance with all administrative and fiscal aspects of the Contract.	Y	S
EDN150	A, N	\$ -	O	\$ -	\$ -	08/23/16	09/01/16	06/30/21	CARE Hawaii, Inc.	Behavior Instructional Support Services (BISS)	To ensure quality, the provider participates in contract monitoring as requested by HIDOE, but in no event less than annually. This contract monitoring focuses on compliance with the HIDOE monitoring protocol and compliance with all administrative and fiscal aspects of the Contract.	Y	S
EDN150	A, N	\$ 1,387,292.00	M	\$ -	\$ -	08/16/16	09/01/16	06/30/21	Hawaii Behavioral Health, LLC dba HBH	Behavior Instructional Support Services (BISS)	To ensure quality, the provider participates in contract monitoring as requested by HIDOE, but in no event less than annually. This contract monitoring focuses on compliance with the HIDOE monitoring protocol and compliance with all administrative and fiscal aspects of the Contract.	Y	S
EDN150	G	\$ 6,484,194.11	O - per invoice	\$ 24,000,000.00	\$ 17,515,805.89	01/11/19	01/19/19	12/18/20	RCM Technologies	Skilled Nursing Services	Ongoing audits of invoices to reconcile timesheets with actual billed time. This is done at OSSS. Quarterly site visits and inspections.	Y	S
EDN300	A	\$ 575,000.00	M	\$ 1,195,240.00	\$ 620,240.00	04/18/19	04/18/19	03/31/21	eWorld Enterprise Solutions, Inc.	Project Management Services for eCSSS Migration for DOE.	Meeting with vendor to review progress and tasks; status reports	Y	S
EDN150	A	\$ 152,346.00	O - after services rendered	\$ 174,110.00	\$ 21,764.00	01/08/19	01/08/19	12/31/20	Special Olympics Hawaii Inc.	Special Olympics - Year Round Athletic Program	Quarterly reports	Y	S

Prog ID	MOF	Amount	Frequency (M/A/O)	Max Value	Outstanding Balance	Term of Contract			Entity	Contract Description	Explanation of How Contract is Monitored	POS Y/N	Category E/L/P/C/G/S/*
						Date Executed	From	To					
EDN150	A	\$ 190,406.00	O	\$ 509,165.00	\$ 318,759.00	08/19/19	08/19/19	05/31/21	Pacific Resources for Education and Learning	Development and Implementation of English Learner Newcomer Transition Center to be piloted (PREL)	Monthly meetings scheduled with prep staff to ensure deliverables are met according to contract.	Y	S
EDN150	A, N	\$ 2,308,507.38	M	\$ 80,000,000.00	\$ 77,691,492.62	09/03/19	09/03/19	06/30/21	Mau Loa Learning	Provide Applied Behavior Analyst (ABA) professional (i.e., Licensed Behavior Analyst (LBA) & Licensed Psychologist) & ABA professional (Registered Behavior Technician (RBT) & paraprofessionals) services to meet the ABA service needs of students	To ensure quality, the provider participates in contract monitoring as requested by HIDOE, but in no event less than annually. This contract monitoring focuses on compliance with the HIDOE monitoring protocol and compliance with all administrative and fiscal aspects of the Contract.	Y	S
EDN150	A, N	\$ 874,271.00	M	\$ 80,000,000.00	\$ 79,125,729.00	08/05/19	08/05/19	06/30/21	Invo Healthcare Assoc., LLC DBA Invo Healthcare	Provide Applied Behavior Analyst (ABA) professional (i.e., Licensed Behavior Analyst (LBA) & Licensed Psychologist) & ABA professional (Registered Behavior Technician (RBT) & paraprofessionals) services to meet the ABA service needs of students	To ensure quality, the provider participates in contract monitoring as requested by HIDOE, but in no event less than annually. This contract monitoring focuses on compliance with the HIDOE monitoring protocol and compliance with all administrative and fiscal aspects of the Contract.	Y	S
EDN150	A, N	\$ 1,978,630.00	O	\$ 80,000,000.00	\$ 78,021,370.00	07/31/19	07/31/19	06/30/21	Behavioral And Therapeutic Services Of Hawaii LLC DBA BTSH	Provide Applied Behavior Analyst (ABA) professional (i.e., Licensed Behavior Analyst (LBA) & Licensed Psychologist) & ABA professional (Registered Behavior Technician (RBT) & paraprofessionals) services to meet the ABA service needs of students	To ensure quality, the provider participates in contract monitoring as requested by HIDOE, but in no event less than annually. This contract monitoring focuses on compliance with the HIDOE monitoring protocol and compliance with all administrative and fiscal aspects of the Contract.	Y	S

Prog ID	MOF	Amount	Frequency (M/A/O)	Max Value	Outstanding Balance	Term of Contract			Entity	Contract Description	Explanation of How Contract is Monitored	POS Y/N	Category E/L/P/C/G/S/*
						Date Executed	From	To					
EDN150	A, N	\$ 6,928,188.79	M	\$ 80,000,000.00	\$ 73,071,811.21	07/18/19	07/18/19	06/30/21	BAYADA Home Care	Provide Applied Behavior Analyst (ABA) professional (i.e., Licensed Behavior Analyst (LBA) & Licensed Psychologist) & ABA professional (Registered Behavior Technician (RBT) & paraprofessionals) services to meet the ABA service needs of students	To ensure quality, the provider participates in contract monitoring as requested by HIDOE, but in no event less than annually. This contract monitoring focuses on compliance with the HIDOE monitoring protocol and compliance with all administrative and fiscal aspects of the Contract.	Y	S
EDN150	A, N	\$ 4,911,708.00	O	\$ 80,000,000.00	\$ 75,088,292.00	07/19/19	07/19/19	06/30/21	RCM Technologies	Provide Applied Behavior Analyst (ABA) professional (i.e., Licensed Behavior Analyst (LBA) & Licensed Psychologist) & ABA professional (Registered Behavior Technician (RBT) & paraprofessionals) services to meet the ABA service needs of students	To ensure quality, the provider participates in contract monitoring as requested by HIDOE, but in no event less than annually. This contract monitoring focuses on compliance with the HIDOE monitoring protocol and compliance with all administrative and fiscal aspects of the Contract.	Y	S
EDN150	A, N	\$ 1,481,487.00	O	\$ 80,000,000.00	\$ 78,518,513.00	08/01/19	08/01/19	06/30/21	A Honu Autism Center DBA Malama Pono Autism Center	Provide Applied Behavior Analyst (ABA) professional (i.e., Licensed Behavior Analyst (LBA) & Licensed Psychologist) & ABA professional (Registered Behavior Technician (RBT) & paraprofessionals) services to meet the ABA service needs of students	To ensure quality, the provider participates in contract monitoring as requested by HIDOE, but in no event less than annually. This contract monitoring focuses on compliance with the HIDOE monitoring protocol and compliance with all administrative and fiscal aspects of the Contract.	Y	S
EDN150	A, N	\$ 3,227,513.20	M	\$ 80,000,000.00	\$ 76,772,486.80	07/18/19	07/18/19	06/30/21	HBH	Provide Applied Behavior Analyst (ABA) professional (i.e., Licensed Behavior Analyst (LBA) & Licensed Psychologist) & ABA professional (Registered Behavior Technician (RBT) & paraprofessionals) services to meet the ABA service needs of students	To ensure quality, the provider participates in contract monitoring as requested by HIDOE, but in no event less than annually. This contract monitoring focuses on compliance with the HIDOE monitoring protocol and compliance with all administrative and fiscal aspects of the Contract.	Y	S

Prog ID	MOF	Amount	Frequency (M/A/O)	Max Value	Outstanding Balance	Term of Contract			Entity	Contract Description	Explanation of How Contract is Monitored	POS Y/N	Category E/L/P/C/G/S/*
						Date Executed	From	To					
EDN150	A, N	\$ 503,792.00	M	\$ 80,000,000.00	\$ 79,496,208.00	07/25/19	07/25/19	06/30/21	Alakai Na Keiki, Inc.	Provide Applied Behavior Analyst (ABA) professional (i.e., Licensed Behavior Analyst (LBA) & Licensed Psychologist) & ABA professional (Registered Behavior Technician (RBT) & paraprofessionals) services to meet the ABA service needs of students	To ensure quality, the provider participates in contract monitoring as requested by HIDOE, but in no event less than annually. This contract monitoring focuses on compliance with the HIDOE monitoring protocol and compliance with all administrative and fiscal aspects of the Contract.	Y	S
EDN150	A, N	\$ 638,950.00	O	\$ 80,000,000.00	\$ 79,361,050.00	07/25/19	07/25/19	06/30/21	EBS Healthcare, Inc.	Provide Applied Behavior Analyst (ABA) professional (i.e., Licensed Behavior Analyst (LBA) & Licensed Psychologist) & ABA professional (Registered Behavior Technician (RBT) & paraprofessionals) services to meet the ABA service needs of students	To ensure quality, the provider participates in contract monitoring as requested by HIDOE, but in no event less than annually. This contract monitoring focuses on compliance with the HIDOE monitoring protocol and compliance with all administrative and fiscal aspects of the Contract.	Y	S
EDN150	A, N	\$ 1,432,990.00	O	\$ 80,000,000.00	\$ 78,567,010.00	07/25/19	07/25/19	06/30/21	Understanding Behavior Inc.	Provide Applied Behavior Analyst (ABA) professional (i.e., Licensed Behavior Analyst (LBA) & Licensed Psychologist) & ABA professional (Registered Behavior Technician (RBT) & paraprofessionals) services to meet the ABA service needs of students	To ensure quality, the provider participates in contract monitoring as requested by HIDOE, but in no event less than annually. This contract monitoring focuses on compliance with the HIDOE monitoring protocol and compliance with all administrative and fiscal aspects of the Contract.	Y	S
EDN150	A	\$ 49,330.00	O	\$ 24,661.06	\$ (24,668.94)	06/25/19	06/25/19	06/30/21	UH	Teacher Training in Second Language Teaching (TESOL)	Monitored by the school (KCC). Reported to us in written reports at the start of program, mid-term and end of the year.	Y	S
EDN150	A	\$ 100,000.00	O	\$ 600,000.00	\$ 500,000.00	09/23/19	10/01/19	09/30/20	Hawaii Behavioral Health LLC, HBH	Psychiatric Services with Tele-Health	Monitored by Program Manager.	Y	S
EDN150	A, N	\$ 1,967,254.00	O	\$ 2,275,000.00	\$ 307,746.00	07/01/19	07/01/19	06/30/21	Isle Interpret LLC	Provide Communication Access Real-Time Translation (CART) and Computer Assisted Notetaking (CAN) for a special needs student	Communication between provider and the Program Administrator and the Educational Specialist and weekly review of invoices (verified timesheets by schools)	Y	S

Prog ID	MOF	Amount	Frequency (M/A/O)	Max Value	Outstanding Balance	Term of Contract			Entity	Contract Description	Explanation of How Contract is Monitored	POS Y/N	Category E/L/P/C/G/S/*
						Date Executed	From	To					
EDN150	A, N	\$ 2,584.00	O	\$ 1,900,000.00	\$ 1,897,416.00	08/22/19	08/22/19	06/30/21	Karas Enterprises, Inc. DBA Karasch & Associates	Provide Communication Access Real-Time Translation (CART) and Computer Assisted Notetaking (CAN) for a special needs student	Communication between provider and the Program Administrator and the Educational Specialist and weekly review of invoices (verified timesheets by schools)	Y	S
EDN150	A	\$ 87,378.00	O	\$ 1,900,000.00	\$ 1,812,622.00	09/10/19	09/10/19	06/30/21	Linguabee	Provide Communication Access Real-Time Translation (CART) and Computer Assisted Notetaking (CAN) for a special needs student	Communication between provider and the Program Administrator and the Educational Specialist and weekly review of invoices (verified timesheets by schools)	Y	S
EDN150	A	\$ 973,700.00	M	\$ 2,574,930.60	\$ 1,601,230.60	07/01/19	07/01/19	06/30/21	EBS Healthcare Staffing Services, Inc.	Provision of Educational Services for Students of the HIDOE at Various Residential Treatment Facilities	Monthly reports	Y	S
EDN150	A, N	\$ 14,715.00	M	\$ 80,000,000.00	\$ 79,985,285.00	12/27/19	12/27/19	06/30/21	Center For Autism And Related Disorders, LLC	Provide Applied Behavior Analyst (ABA) professional (i.e., Licensed Behavior Analyst (LBA) & Licensed Psychologist) & ABA professional (Registered Behavior Technician (RBT) & paraprofessionals) services to meet the ABA service needs of students	To ensure quality, the provider participates in contract monitoring as requested by HIDOE, but in no event less than annually. This contract monitoring focuses on compliance with the HIDOE monitoring protocol and compliance with all administrative and fiscal aspects of the Contract.	Y	S
EDN150	A, N	\$ 1,348,075.00	M	\$ 80,000,000.00	\$ 78,651,925.00	11/18/19	11/18/19	06/30/21	Akamai Behavior Analysis LLC	Provide Applied Behavior Analyst (ABA) professional (i.e., Licensed Behavior Analyst (LBA) & Licensed Psychologist) & ABA professional (Registered Behavior Technician (RBT) & paraprofessionals) services to meet the ABA service needs of students	To ensure quality, the provider participates in contract monitoring as requested by HIDOE, but in no event less than annually. This contract monitoring focuses on compliance with the HIDOE monitoring protocol and compliance with all administrative and fiscal aspects of the Contract.	Y	S
EDN150	A	\$ -	O - contract payment schedule	\$ 157,792.50	\$ 157,792.50	06/26/20	06/26/20	06/30/21	Dual Language Education of New Mexico	Develop and Implement a Dual Language Program	Monitored by Program Manager and SSB Leadership	Y	S
EDN150	A	\$ -	O - contract payment schedule	\$ 278,264.00	\$ 278,264.00	06/10/20	07/01/20	6/30/2021	University of Hawaii	School Based Behavioral and Mental Health Services	Monitored by Program Manager and SSB Leadership	Y	S

Prog ID	MOF	Amount	Frequency (M/A/O)	Max Value	Outstanding Balance	Term of Contract			Entity	Contract Description	Explanation of How Contract is Monitored	POS Y/N	Category E/L/P/C/G/S/*
						Date Executed	From	To					
EDN150	B	\$ -	O - quarterly payments for direct service	\$ 501,250.00	\$ 501,250.00	08/14/20	08/14/20	06/30/21	UMASS	To Provide Third Party Administration, Technical Support and Claiming of School-Based Medicaid Eligible Services	Monitored by Program Manager. Regular Remittance Advice Reports.	Y	S
EDN150	A	\$ -	O - contract payment schedule	\$ 421,078.00	\$ 421,078.00	08/14/20	08/14/20	06/30/21	WICHE	Intern clinical psychologist trainees	Monitored by Program Manager and SSB Leadership	Y	S
EDN100	N	\$ 437,430.00	O - PDERI processes payment upon receipt of invoice	\$ 805,236.00	\$ 367,806.00	05/31/18	05/31/18	06/30/21	Miller Educational Consulting Services, Inc. dba Teaching Learning Solutions	Provide Certification and Calibration Training on the Danielson Observation Framework for the HDOE	PDERI is invoiced directly from Teaching Learning Solutions for services and licenses to provide certification and calibration on the Danielson Framework.	N	S
EDN300	A	\$ 71,649.00	O - payment made upon completion of service and receipt of invoice	\$ 82,131.13	\$ 10,482.13	01/17/18	01/17/18	09/30/20	Adele Christina Hermann	Develop, Administer, and Support a Custom Survey Platform	Teacher Induction Center is invoiced directly from A. Hermann	Y	S
EDN300	A	\$ 30,000.00	O - after services rendered	\$ 111,000.00	\$ 81,000.00	10/04/17	10/04/17	06/30/21	Na Kahu Malama Nurses, Inc.	Hep B vaccinations	Direct communication with Kahu Malama Nurses and by the invoices received.	N	S
EDN300	A	\$ 787,499.96	O - after services rendered	\$ 1,455,000.00	\$ 667,500.04	01/16/18	01/16/18	12/31/20	PowerSchool Group LLC	Statewide Licensing of PD Mgmt System	Status meetings every two weeks.	N	S
EDN150	A	\$ 6,519,983.00	O - PDB processes payment upon receipt of invoice (October, January & April)	\$ 8,386,944.00	\$ 1,866,961.00	06/09/17	07/01/17	06/30/21	UH Manoa	UH SPED Certification	Quarterly meetings and expenditure plans with University of Hawaii at Manoa	N	S
EDN150	W	\$ 50,000.00	O - PDB processes payment upon receipt of invoice (Quarterly)	\$ 300,000.00	\$ 250,000.00	06/05/17	07/01/17	06/30/21	UH West Oahu	UH West Oahu SPED Certification	Quarterly meetings and expenditure plans with University of Hawaii - West Oahu	N	S
EDN300	A	\$ 1,400,000.00	O - PDB processes payment upon receipt of invoice (quarterly)	\$ 1,600,000.00	\$ 200,000.00	10/04/17	10/04/17	06/30/21	University of Hawaii	Certification of Secondary Teachers	Quarterly meetings and expenditure plans with University of Hawaii at Manoa	N	S

Prog ID	MOF	Amount	Frequency (M/A/O)	Max Value	Outstanding Balance	Term of Contract			Entity	Contract Description	Explanation of How Contract is Monitored	POS Y/N	Category E/L/P/C/G/S/*
						Date Executed	From	To					
EDN150	A/W	\$ 548,840.00	O - PDB processes payment upon receipt of invoice (April, June, August, October)	\$ 548,840.00	\$ -	02/22/19	02/22/19	12/31/20	University of Hawaii Leeward College	The University of Hawaii, Leeward Community College shall expend funds to recruit, screen, enroll and award tuition stipend to qualified candidates participating in an approved special education teacher program	Quarterly meetings and expenditure plans with Leeward Community College	N	S
EDN300	NA	\$ -	O - there is no payment to NBS	\$ -	\$ -	06/06/19	06/06/19	06/30/24	National Benefit Services, LLC	Tax-Sheltered Annuity (TSA) program	Monitoring the contractor's work, documenting that contractor maintains the required insurance coverage (if applicable), resolving contract disputes and discrepancies, evaluating the work of the contractor, assuring the services or goods are delivered as required in the contract, and processing payment for services rendered (if applicable).	N	S
EDN100 EDN300	A	\$ 139,437.71	A	\$ 139,437.71	\$ -	10/01/19	10/01/19	06/30/21	Powerschool Group, LLC	SmartFindExpress licensed software services, data maintenance, and repair services	Continuously working with eSchools in monitoring system and any issues.	Y	S
EDN300	A	\$ -	O - after services rendered	\$ -	\$ -	09/03/19	09/03/19	06/30/21	Alliance Abroad Group, L.P.	International Teacher Recruitment Services	Number of teachers referred and hired	Y	S
EDN150	A/W	\$ 225,000.00	O - PDB processes payment upon receipt of invoice (June, January, June)	\$ 225,000.00	\$ -	04/16/19	04/16/19	06/30/21	Leeward Community College	LCC 3+1 SPED Teacher Program	Quarterly meetings and expenditure plans with Leeward Community College	N	S
EDN300	A	\$ -	O	\$ 55,955.75	\$ 55,955.75	11/19/19	11/19/19	10/31/20	IDEMIA Identity & Security USA, LLC.	Portable Livescan Machines	The contract is based on delivery, installation, testing and training which were recently completed and confirmed with the vendor in September 2020. Waiting to receive invoice to process and issue one-time payment.	Y	G
EDN300	A	\$ 50,000.00	O	\$ 50,000.00	\$ -	10/21/19	10/21/19	09/30/20	University of Hawaii	Be A Hero. Be A Teacher Advertising Campaign	Contractor provides updated reports on the status of the project.	Y	S

Prog ID	MOF	Amount	Frequency (M/A/O)	Max Value	Outstanding Balance	Term of Contract			Entity	Contract Description	Explanation of How Contract is Monitored	POS Y/N	Category E/L/P/C/G/S/*
						Date Executed	From	To					
EDN100	N	\$ 120,000.00	A	\$ 120,000.00	\$ -	05/31/17	05/31/17	06/30/21	C&C of Hon. Dept. Parks and Recreations (DPR)	Provide Art, Recreational, Health and Wellness programs after-school, summer, intersession hours for the youth.	Contractor shall submit reports to complex (student attendance, program evaluation, activity forms). Project Director completes semesterly visitations.	Y	S
EDN200	A	\$ 200,000.00	O	\$ 200,000.00	\$ -	01/31/20	07/01/19	12/31/20	Friends of Waipahu High School	42F - Support the Implementation of Ala I Ka Holomua: Pathway to Success Program, an Early College Pathway designed to foster college and career readiness, cultivate in students the skills needed to succeed as individuals, and contribute to Hawaii's workforce development in the field of Creative Media	The UHWO Director of Early College, in consultation with the ACM UHWO Early College Consortium, will assume responsibility for the implementation of all program deliverables, and ensure fidelity in adhering to the program objectives as outlined in this Grant-in-Aid proposal.	Y	S
EDN100	A	\$ 61,950.00	A	\$ 153,600.00	\$ 91,650.00	06/03/19	07/10/19	11/30/20	KCC	Pharmacy Technician Program	Academy Leadership monitors services	Y	S
EDN100	A	\$ 74,000.00	A	\$ 100,000.00	\$ 26,000.00	10/30/19	11/01/19	10/31/21	Doris E. Yamashiro-Tanaka dba DEYT Services LLC	Serve as a Systems Facilitator, Central Point of Contact and Information Dissemination State, Complex and School Initiative.	Monitored by Principal	Y	S
EDN150	A	\$ -	A	\$ 47,740.00	\$ 47,740.00	02/03/20	02/03/20	08/31/21	University of Hawaii, Kapiolani Community College	Community Health Worker Certification	Academy Leadership monitors services	Y	S
EDN200	A	\$ 21,524.00	O - every two weeks	\$ 66,755.15	\$ 45,231.15	06/29/20	07/01/20	06/30/21	Alii Security Systems, Inc.	Security Services at the Queen Liliuokalani Bldg for DOE	Contractor submits timesheet	Y	S

<u>Prog ID</u>	<u>Prog ID</u>	<u>Dept-Wide</u>	<u>Senate</u>	<u>Rep.</u>	<u>Project Title</u>	<u>MOF</u>	<u>FY22 \$\$\$</u>	<u>FY23 \$\$\$</u>
EDN 100	1	1	99	99	LUMP SUM CIP - CAPACITY, STATEWIDE	C	\$ -	\$ 4,000,000
EDN 100	2	2	99	99	LUMP SUM CIP - DEFERRED MAINTENANCE PROJECTS, STATEWIDE	C	\$ 81,500,000	\$ 103,150,000
EDN 100	3	3	99	99	LUMP SUM CIP - INSTRUCTIONAL, STATEWIDE	C	\$ 6,800,000	\$ 2,850,000
EDN 100	4	4	99	99	LUMP SUM CIP - SUPPORT, STATEWIDE	C	\$ 13,500,000	\$ -
EDN 100	5	5	99	99	LUMP SUM CIP - COMPLIANCE, STATEWIDE	C	\$ 8,200,000	\$ -
EDN 100	6	6	99	99	LUMP SUM CIP - HEALTH AND SAFETY, STATEWIDE	C	\$ 10,000,000	\$ 10,000,000
EDN 100	7	7	99	99	LUMP SUM CIP - PROJECT COMPLETION, STATEWIDE	C	\$ 25,000,000	\$ 25,000,000
EDN 100	8	8	99	99	LUMP SUM - OFFICE OF INFORMATION TECHNOLOGY SERVICES, STATEWIDE	C	\$ 5,000,000	\$ 5,000,000

<u>Prog ID</u>	<u>Act/Year of</u>	<u>Project Title</u>	<u>MOF</u>	<u>Lapse</u>	<u>Reason</u>
		None			

<u>Program ID</u>	<u>Sub-Org Code</u>	<u>Name</u>	<u>Objective</u>
EDN100	AA	WEIGHTED STUDENT FORMULA	To assure all students receive instruction consistent with the Hawaii Common Core and Hawaii Content and Performance Standards so they may achieve those standards and develop to their fullest potential in alignment with the General Learner Outcomes (GLOs) and the objectives of Goal 1 of the Strategic Plan.
EDN100	AB	REGULAR INSTRUCTION	To assure all students receive instruction consistent with the Hawaii Common Core and Hawaii Content and Performance Standards so they may achieve those standards and develop to their fullest potential in alignment with the General Learner Outcomes (GLOs) and the objectives of Goal 1 of the Strategic Plan.
EDN100	BB	VOCATIONAL EDUCATION	To provide high school students with education and training for employment purposes and/or progression into post-secondary education.
EDN100	BH	SUMMER INSTRUCTION	To provide opportunities to extend student learning experiences during the summer and intersession breaks.
EDN100	BJ	AT-RISK PROGRAMS	To increase the educational performance by improving the academic skills and competencies of the students referred to the program, and to enable them to meet the standards and the high school graduation requirements, and to improve the social and emotional competencies of the students through the counseling component of the program.

<u>Program ID</u>	<u>Sub-Org Code</u>	<u>Name</u>	<u>Objective</u>
EDN100	BL	STUDENT ACTIVITIES	To provide opportunities and experiences that will enable students: 1) to learn leadership and cooperative skills; 2) to practice and apply what they have learned in the classroom; 3) to develop a positive concept of self; 4) to develop personal interests; 5) to develop responsibility to self and to others; 6) to develop personal and social relationships; and 7) to develop as participating citizens in school, community, state, national and/or world programs and affairs.
EDN100	BM	ATHLETICS	To provide high school students opportunities to participate in a variety of sports activities and organized interscholastic athletic competitions.
EDN100	BQ	LEARNING CENTERS	To provide for special and unique student needs, interest and talent by establishing learning centers in identified schools in each of the seven districts.
EDN100	BR	DRIVER EDUCATION	To provide high school students the skills, knowledge and attitudes to allow them to effectively and safely operate an automobile.
EDN100	BS	JROTC	To conduct a Junior Reserve Officer Training Corps (JROTC) program in Hawaii's high schools based upon student interest and in accordance with existing agreements between the Department and the United States military services.
EDN100	BV	HAWAIIAN LANGUAGE IMMERSION PROGRAM	To provide students, on a limited site basis, with a Hawaiian bicultural and bilingual education based on the standards through a culturally relevant curriculum that uses Hawaiian as the language of instruction.
EDN100	BX	OTHER INSTRUCTIONAL SERVICES	To provide services to meet unique needs of students through enrichment and supplemental learning experiences.

<u>Program ID</u>	<u>Sub-Org Code</u>	<u>Name</u>	<u>Objective</u>
EDN100	BY	RESOURCES FOR NEW FACILITIES	To provide the essential equipment, textbooks, library books, and position-related furniture for new classrooms and facilities.
EDN100	CB	SCHOOL ADMINISTRATION	To facilitate the operation of school programs by providing management and operational support services.
EDN100	CJ	HAWAIIAN STUDIES	To support and expand the Hawaiian language and culture through our public schools and to support students in learning, understanding, and developing Hawaiian perspectives, knowledge and practices.
EDN100	CN	EMPLOYEE BENEFITS	To minimize the economic losses to Department employees resulting from a work related injury or illness by providing and facilitating payments so that benefits are paid promptly and with minimum amount of dispute or litigation and to plan and administer the Workers' Compensation (WC) Program for Department employees, students, and adult volunteers who are providing services to the Department, including the processing of all WC benefits as required by the State of Hawaii Workers' Compensation Law (Chapter 386 HRS).
EDN100	CQ	HAWAII CONTENT AND PERFORMANCE STANDARDS	To monitor and support the performance of schools and schools' professional staff as a collective unit; to assure all children are instructed consistent with the standards so they will attain the standards and meet the benchmarks required by the federal Elementary and Secondary Education Act (ESEA); and to provide a consistent, clear understanding of the knowledge and skills that students need for success in college and careers.
EDN100	DB	EVERY STUDENT SUCCEEDS ACT	To support education reform designed to improve student achievement and change the culture of American education.

<u>Program ID</u>	<u>Sub-Org Code</u>	<u>Name</u>	<u>Objective</u>
EDN100	DH	NATIVE HAWAIIAN SPECIAL EDUCATION PROJECT	To develop an improved educational system for Native Hawaiian children that includes culturally responsive instructional approaches and excellent teachers.
EDN100	DR	DOD APPROPRIATIONS ACT	To provide federal assistance to Local Educational Agencies with military dependents.
EDN100	RR	RECONCILE PROG ID TO BUDGET ACT	To reconcile to the appropriations act.
EDN100	XA	ALU LIKE	To account for funds received through contract with Alu Like, Native Hawaiian Vocational Education Program in Maui, Windward, and Leeward Districts.
EDN100	XB	DONATIONS & GIFTS	To account for funds donated to the schools for specific purposes.
EDN100	XC	ATHLETICS	To account for funds collected through athletic events such as admissions, league share, activity book sale, and donations.
EDN100	XE	FOUNDATION & OTHER GRANTS	To account for funds received as grants and other donations from both private and state agencies for various projects administered at the state and district level.
EDN100	XF	OLELO-EDUCATIONAL PUBLIC TV	To account for funds received under contract with Olelo Community Media.
EDN100	XH	OFFICE OF HAWAIIAN AFFAIRS GRANTS	To account for grant funds received from the Office of Hawaiian Affairs.
EDN150	FA	SPECIAL EDUCATION IN REGULAR SCHOOLS	To ensure that student learning takes place within an educational, social, and emotional context that supports each student's success in achieving the Hawaii Common Core and Hawaii Content and Performance Standards.
EDN150	FB	SPECIAL SCHOOLS	To ensure that exceptional children who are disabled achieve according to their potential by providing special education programs and services that meet their unique needs.

<u>Program ID</u>	<u>Sub-Org Code</u>	<u>Name</u>	<u>Objective</u>
EDN150	FC	SPED SERVICES DURING SCHOOL BREAKS	To ensure that student learning takes place within an educational, social and emotional context that supports each student’s success in achieving the Hawaii Common Core and Hawaii Content and Performance Standards.
EDN150	FD	OTHER SPECIAL EDUCATION SERVICES	To assure that student learning takes place within an educational, social and emotional context that supports each student’s success in achieving the Hawaii Common Core and Hawaii Content and Performance Standards.
EDN150	NB	SPECIAL EDUCATION FOR THE DISABLED	To meet the Individualized Education Program (IEP) goals and objectives of children with disabilities, ages 3 to 22, who meet the certification requirements of special education and related services.
EDN150	ND	PRESCHOOL FOR THE DISABLED	To meet needs of children with disabilities, ages 3, 4, and 5, who meet the certification requirements for special education and related services.
EDN150	RA	SPECIAL OLYMPICS	To ensure that students in special education are provided opportunities to participate in year-round sports training and athletic competition in a variety of sporting events.
EDN150	RR	RECONCILE PROG ID TO BUDGET ACT	To reconcile to the appropriations act.
EDN150	SA	EDUCATIONAL ASSESSMENT AND PRESCRIPTIVE SERVICES	To alleviate learning and/or adjustment problems of students by providing individual student assessments and related services such as psychological, social work, diagnostic or prescriptive, and speech, language, hearing, physical therapy, occupational therapy, and skilled nursing services.

<u>Program ID</u>	<u>Sub-Org Code</u>	<u>Name</u>	<u>Objective</u>
EDN150	TA	TRAINING & RETENTION	To assist the Department in training and licensing special education teachers who will teach Hawaii's youth with disabilities; to implement and honor a memorandum of agreement with the University of Hawaii's College of Education to assist prospective teachers with tuition-free courses; and to increase the production of teachers at the rate of 50+ teachers per year by providing students with tuition incentives.
EDN150	VA	STUDENT SUPPORT SERVICES	To facilitate the delivery of school-based instructional, health, psychological and social support services to students, and their families through the implementation of a comprehensive student support system in every school.
EDN150	VC	INTEGRATED SPECIAL EDUCATION DATABASE	To develop, implement and sustain systems which are used for case management, official enrollment count, staffing allocations, child count, tracking timelines, data management, sustainability reports, monitoring for state and federal compliance for the Individuals with Disabilities Education Improvement Act (IDEA), and producing other special requested reports and federally mandated data reports.
EDN150	YC	SCHOOL BASED BEHAVIORAL HEALTH SERVICES	To provide federally-mandated and Department-directed preventative and early intervention services to students in need of such services in order for them to benefit from the instructional opportunities necessary to achieve the General Learner Outcomes, Hawaii Common Core and Hawaii Content and Performance Standards, requirements of the federal Elementary and Secondary Education Act (ESEA), and the vision of the public school graduate.

<u>Program ID</u>	<u>Sub-Org Code</u>	<u>Name</u>	<u>Objective</u>
EDN150	YD	TARGETED TECHNICAL ASSISTANCE	To provide financial support for technical assistance to school communities providing school-based services to develop the long-term sustainable community involvement necessary to achieve effective community and family engagement in the education of students with disabilities. This program includes funding for the Community Children’s Council Office.
EDN150	YG	SERVICES FOR CHILDREN WITH AUTISM	To ensure that children who are disabled are provided a free, appropriate public education by providing specially designed instruction and related services that meet their needs and to achieve compliance with the guidelines of Hawaii Administrative Rules and the Individuals with Disabilities Education Improvement Act of 2004.
EDN150	YK	OTHER RELATED SERVICES	To provide support services to ensure compliance with state and federal laws, and Department rules, and court orders to ensure equal educational opportunities and free appropriate public education to all students who are eligible for special education and related services, ages 3 to 22, regardless of the severity of their disability; to oversee and track contract compliance issues and to assist in the pursuit of federal Medicaid reimbursement claiming capacity within the Department based on medically-related services provided under the Individuals with Disabilities Education Improvement Act of 2004, per Act 141, Sessions Laws of Hawaii 2005.
EDN200	GB	INSTRUCTIONAL DEVELOPMENT-ADMINISTRATIVE SERVICES	To provide state leadership and direction in curriculum and instruction to assure statewide availability of effective quality curricula, programs and related services, including federal Elementary and Secondary Education Act (ESEA) mandates.

<u>Program ID</u>	<u>Sub-Org Code</u>	<u>Name</u>	<u>Objective</u>
EDN200	GC	INSTRUCTIONAL SUPPORT	To provide curricular and instructional leadership, support, and research and development services in regular education to all schools in the public school system.
EDN200	GD	SCHOOL LEADERSHIP AND IMPROVEMENT	To facilitate school leadership and improvement at all schools, including the lowest-performing schools, by implementing continuous improvement processes (including comprehensive needs assessments, data teams, self-study, and community engagement activities) that lead to the development of academic and financial plans that target the root causes for the lack of improvement.
EDN200	GG	ADVANCE TECHNOLOGY RESEARCH	To research and disseminate information on new and emerging technologies that support the instructional and administrative operations of the public school system, and provide infrastructure and technical consultation in the implementation of new technologies.
EDN200	GH	TEACHER IMPROVEMENT SERVICES	To improve the quality of instruction by providing training and services that support the professional growth and development of teachers throughout the system.
EDN200	GJ	LEADERSHIP DEVELOPMENT	To train, develop and support administrators at every level (principals, vice-principals, athletic directors, and teacher leadership teams) to enable them to gain the skills, knowledge, and strategies as leaders to focus their school improvement efforts on standards-based education and to support the Strategic Plan.

<u>Program ID</u>	<u>Sub-Org Code</u>	<u>Name</u>	<u>Objective</u>
EDN200	GM	TECHNOLOGY IN EDUCATION	To provide all students equal educational opportunities through technologies that overcome limitations of geographic isolation and limited resources; to facilitate distance learning education through the improvement of the quality and increased quantity of instruction and instructional delivery alternatives; to promote humanitarian experiences and environments that foster global respect and caring for others through the use of telecommunication and advanced technologies; and to promote efficient and effective use of human and material resources.
EDN200	GN	SCHOOL COMPLEX RESOURCE SERVICES	To support and assist school administrators and teachers in the planning and delivery of effective instructional services to students. To facilitate the operations of the schools by providing management, fiscal, planning, logistical, and other related supporting services.
EDN200	GP	SYSTEMS ACCOUNTABILITY	To provide support to the Superintendent by overseeing the comprehensive statewide accountability system, which includes student assessment, school evaluation, and system evaluation; to assure that all children are instructed consistent with the Standards Training and meet the benchmarks required by the federal Elementary and Secondary Education Act (ESEA).
EDN200	GQ	HOMELESS CONCERNS	To ensure that homeless children and youth have access to a free and appropriate education.
EDN200	RR	RECONCILE PROG ID TO BUDGET ACT	To reconcile to the appropriations act.

<u>Program ID</u>	<u>Sub-Org Code</u>	<u>Name</u>	<u>Objective</u>
EDN300	KC	BOARD OF EDUCATION	To promote excellence and equity in Hawaii’s public schools and enable all students to meet their own unique and varied potentials, and to promote excellence and equity in Hawaii’s public library services so that all individuals can meet their reading, information, and lifelong learning needs.
EDN300	KD	OFFICE OF THE SUPERINTENDENT	To plan, direct and administer the various activities of the Department under the general direction of the Board of Education and within the scope of law and established policies and regulations.
EDN300	KF	FISCAL SERVICES	To manage the Department’s budget, accounting, and procurement activities and systems to serve the needs of the schools, school complexes, complex areas, and the state central office; to develop and implement long-term and short-term financial activities; to provide timely, accurate, and user-friendly information and reports in each of the respective areas (i.e., clear guidelines/procedures for completion of documents, and ensuring the guidelines/procedures are aligned with the Department’s goals and objectives); to assist the Superintendent and the Chief Financial Officer (CFO) in the preparation and execution of the public school system’s operating budget; to analyze the Department’s budget-to-actual expenditures, recommending opportunities for reprioritization or redeployment of resources to meet the Department’s needs; and to provide staff support for the Committee on Weights; and to coordinate the financial and compliance organization-wide audit of the Department under the Single Audit Act of 1984, including the non-appropriated Local School Fund; state auditor audits; and various outside CPA firm audits.

<u>Program ID</u>	<u>Sub-Org Code</u>	<u>Name</u>	<u>Objective</u>
EDN300	KH	CIVIL RIGHTS COMPLIANCE	To ensure that the Department of Education complies with federal and state civil rights laws as it relates to employees and students, and ensures that those who participate in departmental programs, services, and activities, are not discriminated against due to specified protected classes; to enable the Board of Education to promulgate, adopt, amend, repeal, and maintain administrative rules for the Department, in accordance with State and federal laws and rules, as well as Governor’s directives; to assist with the overall coordination of Department of Education lawsuits with the Department of the Attorney General.
EDN300	KO	HUMAN RESOURCES	To provide statewide employment and personnel management services and programs within the framework of established laws, policies, collective bargaining agreements, administrative rules, and principles of personnel management for the Department.
EDN300	RR	RECONCILE PROG ID TO BUDGET ACT	To reconcile to the appropriations act.

<u>Program ID</u>	<u>Sub-Org Code</u>	<u>Name</u>	<u>Objective</u>
EDN300	UA	INFORMATION & TECHNOLOGY SERVICES	To empower the Department’s schools and offices by improving the planning, coordination, and delivery of technology-based information and telecommunication services; to coordinate the management of information resources for the public school system to reduce the redundancy of information collected and to promote the compatibility and accessibility of information across a variety of technology platforms; to enable the Department’s schools and offices to take advantage of current and emerging information and telecommunication technologies in order to improve the efficiency, effectiveness and productivity of instructional and administrative programs; and to coordinate the delivery of user-requested technical support and training services in the use of information and telecommunication technologies to schools and offices.
EDN400	MB	FOOD SERVICE ADMINISTRATION	To provide state administrative services for the efficient and effective operation of the school food services program.
EDN400	MC	OFFICE OF HAWAII CHILD NUTRITION PROGRAMS	The Office of Hawaii Child Nutrition Program is responsible for developing and administering program plans, budgets, policies, standards, and specifications for the United States Department of Agriculture (USDA) Food Nutrition Programs which receive funds and commodities from the USDA grants for the State of Hawaii.
EDN400	MD	FOOD SERVICES	To provide nutritious and attractive meals to the maximum number of public school students at a minimum charge, and accommodate vended meal service to other state and local agencies such as child care centers and elderly programs.

<u>Program ID</u>	<u>Sub-Org Code</u>	<u>Name</u>	<u>Objective</u>
EDN400	OB	SCHOOL FACILITIES AND SUPPORT SERVICES	To provide leadership and direction of the department’s reprographics, facilities construction, facilities maintenance, food service, and student transportation programs within the scope of applicable laws, rules, and regulations; to provide printed materials for the educational and administrative purposes of the Department’s schools and offices; and to provide planning, graphic arts, printing, and distribution services to the offices and schools of the public school system in the preparation, production, and delivery of printed materials.
EDN400	OC	FACILITIES SERVICES	To provide centralized services and coordination for all aspects of facilities development. These include planning, evaluations, budgeting, design services, project management services, construction management, and other professional and technical support as required statewide; to provide auxiliary custodial support services to schools; and to administer the teachers' housing program.
EDN400	OD	SCHOOL CUSTODIAL CENTRALIZED SERVICES	To maintain buildings and grounds in a clean, safe, healthy, and attractive condition.
EDN400	OE	UTILITIES	To provide the necessary utilities for the successful operation of schools with the minimum amount of disruption.
EDN400	OG	COMMUNITY USE OF SCHOOL FACILITIES	To make available all public school buildings, facilities, and grounds for general recreational purposes and for public and community use whenever these activities do not interfere with the normal and usual activities of the school and its pupils as provided by law.
EDN400	OI	REPAIRS AND MAINTENANCE OF SCHOOL FACILITIES	To assist schools in addressing their repair and maintenance needs.

<u>Program ID</u>	<u>Sub-Org Code</u>	<u>Name</u>	<u>Objective</u>
EDN400	OJ	ENVIRONMENTAL SERVICES	To provide for safe and healthy workplaces and schools free of hazardous wastes/chemicals.
EDN400	RR	RECONCILE PROG ID TO BUDGET ACT	To reconcile to the appropriations act.
EDN400	YA	STUDENT TRANSPORTATION	To provide student transportation services to eligible students.
EDN500	PB	ADULT EDUCATION ADMINISTRATION	To provide administrative and technical support to the districts and community schools, private trade, vocational, or technical schools.
EDN500	PC	ADULT COMMUNITY SCHOOLS	To provide instructional and support services for adults in basic literacy, workplace literacy, family literacy, cultural and recreational services.
EDN500	PD	RESOURCES FOR ENRICHMENT, ATHLETICS/ACADEMICS, CULTURE AND HEALTH	To improve outcomes and be better prepared for future success, REACH (Resources for Enrichment, Athletics/Academics, Culture and Health) program funds focus on providing students: learning opportunities for academic enrichment, including academic support and homework assistance; an array of enrichment programs and services to increase positive behaviors through character education; and activities promoting active and healthy lifestyles through athletics.
EDN500	RR	RECONCILE PROG ID TO BUDGET ACT	To reconcile to the appropriations act.
EDN500	WA	AFTER-SCHOOL A+ PROGRAM	To support the statewide after-school care services for children of working parents at public elementary schools.
Note: Excludes EDN700. EOEL reporting seperately.			

<u>Year of Change</u> <u>FY20/FY21</u>	<u>Description of Change</u>
FY21	The Office of School Facilities and Support Services changed its title to Office of Facilities and Operations
	http://www.hawaiipublicschools.org/DOE%20Forms/DOE%20Form/Plan%20of%20Organization.pdf
	Note: Plan of Organization as of 6/30/2020 is currently in consult and confer with the unions.