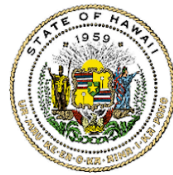


JOSH GREEN, M.D.
GOVERNOR



YUUKO ARIKAWA-CROSS
DIRECTOR

STATE OF HAWAII
Executive Office on Early Learning
2759 South King Street, Room C6
HONOLULU, HAWAII 96826

December 23, 2024

The Honorable Donovan M. Dela Cruz
Chair, Senate Committee on Ways and Means
State Capitol Room 208

The Honorable Kyle T. Yamashita
Chair, House Committee on Finance
State Capitol Room 306

Aloha e Chair Dela Cruz and Chair Yamashita:

In response to the memorandum dated December 6, 2024, enclosed are the Executive Office on Early Learning's budget briefing narrative and tables for the 2025 Legislative Session.

Please contact Jennifer Chow, Government Affairs Specialist, at (808) 784-5350 or email at jennifer.chow@eoel.hawaii.gov with any questions you have.

Thank you very much.

Sincerely,

A handwritten signature in blue ink, appearing to read "Yuuko Arikawa-Cross".

Yuuko Arikawa-Cross, Director
Executive Office on Early Learning

Attachments

c: Colin Peros, Senate Ways and Means Committee Budget Chief
Jon Kawamoto, House Finance Committee Budget Chief

Overview

A. Provide your agency's mission statement, strategic objectives, goals and performance metrics. How will the agency measure progress? What milestones will be tracked?

The Executive Office on Early Learning's vision is for every child in Hawai'i to have access to high-quality early childhood development and learning experiences, which lay the foundation for lifelong well-being. Our mission is, through collaboration and partnerships, we work to establish a system that ensures a solid foundation of early childhood development and learning for Hawaii's young children (prenatal to age five), meaningful engagement and supports for their families, and a stable, competent, and supported early childhood workforce.

We are guided by Chapter 302L and have two primary responsibilities. The first is to coordinate and improve the early learning system to ensure a spectrum of high-quality early learning opportunities for children throughout the State, from prenatal care until the time they enter kindergarten, with priority given to underserved or at-risk children. The early learning system shall: (1) Be widely accessible and voluntary for both those served and program and service providers; (2) Be a cohesive, comprehensive, and sustainable system in which: (A) All existing early learning programs and services, whether publicly- or privately-run, which consist of a variety of early learning approaches, service deliveries, and settings, including center-based programs, family child care programs, family-child interaction learning programs, and home-based instruction programs designed to promote early learning, are coordinated, improved, and expanded; (B) Public and private resources are maximized; and (C) The use of public facilities for either publicly- or privately-run early learning programs is maximized; (3) Provide high-quality early learning experiences with: (A) Standards-based content and curriculum, and accountability; and (B) Sufficient numbers of well-qualified educators and administrators who are fairly compensated and have access to continuing professional development; (4) Offer opportunities for family and community engagement and parent education and support; and (5) Be sensitive to family choice and cultural diversity.

We administer the Executive Office on Early Learning's (EOEL) public preK program and hold the Head Start Collaboration Office Director in our office.

Progress and milestones that EOEL are tracking include the total number of seats available to Hawai'i families, the number of children enrolled in the EOEL public PreK program and of those, how many meet the priority categories. We are also tracking the qualifications of, the quantity of, and the quality of teacher student interactions of the early childhood workforce.

B. Discuss how current state-wide conditions have affected agency operations and the ability to meet goals. Identify and discuss notable performance measures, expected outcomes, and recent results.

- Through the support of the Legislature and the Lt. Governor, we opened 55 new EOEL PreK classrooms between Fall 2023 - Fall 2024.
- EOEL awarded: \$259,959.33 in early childhood stipends to 103 participants, and recorded 12 completers.
- EOEL was selected by the Stanford Center on Early Childhood, along with Vermont, to administer the RAPID Statewide Survey Pilot to gather parent voice.
- In partnership with:
 - The Early Childhood Action Strategy, Hawai'i was selected by the Children's Funding Project to create a Hawai'i Fiscal Map project for children 0-24
 - The Hawai'i Teacher Standards Board and Chaminade University, we expanded the counseling license awarded by Chaminade University to include PreK.

Federal Funds

C. Identify programs that have lost or are at risk of losing federal funds. Identify the source of these federal funds by federal award title and CFDA number. Discuss the impact to the public and your planned response, including efforts to supplant any federal fund reductions for the current year (FY25) and the upcoming fiscal year (FY26) with other funds.

EOEL receives federal funding for 1 FTE position, for the Head Start Collaboration Office Director - Award # 09CD004093-04-00. This role provides support to enhance strategic partnerships between Hawai'i's six local grant recipients and state and community partners to ensure the Head Start voice is included in state-level planning, decision-making, and policy development.

Should there be a reduction of federal funds, there could be:

- Decreased or eliminated Head Start Collaboration Office Director
- Decreased funding for Early Head Start (6 weeks - 2 years) and Head Start (3-5)
- Decreased funding for Head Start Collaboration Office Director
- Decreased funding for Early Childhood Special Education Services
 - IDEA Part C Early Intervention (DOH)
 - IDEA Part B (DOE)

A possible response to the loss of federal funds for the Head Start Collaboration Office (HSCO) Director would be for EOEL to look for funding to support the HSCO Director position.

A possible response to the loss of federal funds could be EOEL preK because all Head Start children and families are within the threshold for EOEL's priority categories.

A possible response for the loss of Child Care Connections Subsidy (DHS) could be to utilize the Preschool Open Doors Subsidy.

Non-General Funds

D. Provide a web link (url) and PDF of the reports to the Legislature on non-general funds under your department pursuant to HRS 37-47.

Early Learning Special Fund: EOEL applied for and received a grant from the Hawaii Dental Service (HDS) Foundation. This grant totaled \$2,700 and also included 470 toothbrushes and 300 regular-sized tubes of toothpaste. In addition to passing these items out during outreach events, we are also translating materials for families into multiple languages.

The Department of Education's consolidated non-general fund reports are in the process of being transmitted to the Legislature, therefore a web link is not yet available. A copy of EOEL's non-general fund reports is attached for your reference until the report is posted online.

Budget Requests

E. Explain the process used to develop the agency's budget and prioritize requests for budget changes.

With appreciation to the legislature's continued commitment to early learning, EOEL expanded its services to include both 3- and 4-year-olds and opened 11 new classrooms in SY 2023-24 bringing the total to 48 EOEL Public pre-K classrooms on 45 HIDOE campuses. In SY 2024-25, EOEL opened 44 new classrooms and now serves 92 EOEL Public pre-K classrooms on 74 HIDOE campuses.

Considering the vast access and opportunity challenges across the islands, EOEL looks for sites that have the space capacity to accommodate an EOEL room renovation, has supportive leadership, and has identified needs such as schools with early childhood special education rooms on campus and no general education rooms, English Language learners, children in foster care, children experiencing unstable housing, and families with incomes below 300% of the federal poverty level.

F. Identify and discuss significant adjustments contained in the budget request submitted to the legislature. Explain and quantify how significant requests for additional funds are expected to affect outcomes.

In response to Act 46, SLH 2020, EOEL is asking for an opportunity to contribute to the goal of creating seats for 50% of the currently unserved students by 2027 by opening 50 new classrooms over the next two years.

The request from EOEL is for 50 teacher positions, 50 educational assistant positions, and 8 early learning state office teacher positions to serve these rooms and schools by providing coaching, mentoring, and professional development.

This current request will assist EOEL with expanding access and opportunity to communities across Hawai'i. In 2014, EOEL opened its first 20 classrooms on 18 campuses and served up to 380 students. In 2019, EOEL opened 27 classrooms on 24 campuses and served up to 520 students. In 2024, EOEL

opened 92 classrooms on 74 campuses and serves up to 1,768 students. Should our request be approved, EOEL would be able to serve about 1,000 more 3- and 4-year-olds across our islands.



Budget Briefing 2025





Who We Are

Statutory Charge:

To work across state departments, organizations, and sectors toward a comprehensive and integrated early childhood system for the state.

Section 302L-2, Hawaii Revised Statutes





Vision and Mission

Vision

Every child in Hawai'i has access to high-quality early childhood development and learning experiences, which lay the foundation for lifelong well-being.

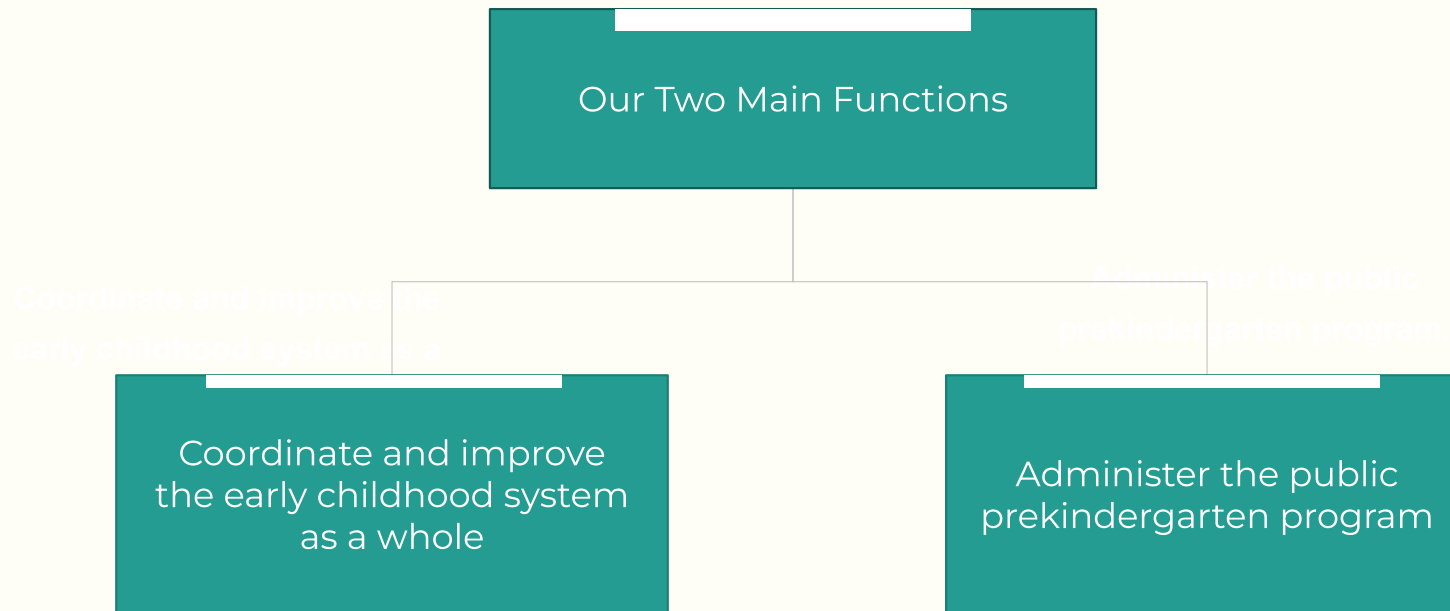
Mission

Through collaboration and partnerships, we work to establish a system that ensures a solid foundation of early childhood development and learning for Hawaii's young children (prenatal to age five), meaningful engagement and supports for their families, and a stable, competent, and supported early childhood workforce.





What We Do





Notable measures, outcomes, and results

EOEL Lead

- ★ Opened 55 new EOEL PreK classrooms between Fall 2023 - Fall 2024
- ★ Awarded: \$259,959.33 in EC stipends to 103 participants, and recorded 12 completers
- ★ RAPID Statewide Survey Pilot (Parent Voice) project with Vermont [RAPID program](#)

Partnership

In Partnership

- Children's Funding Project Hawai'i Fiscal Map project for children 0-24 with ECAS
- Expanded the counseling license awarded by Chaminade University to PreK



What Does Success Look Like?

Progress (Leading Indicators) and Milestones (Lagging Indicators):

- Seats and options available to families across the islands
- Number of children enrolled in the EOEL public PreK program
- Number of children in EOEL preK that meet the priority categories in the public prekindergarten program
- Qualifications of the early childhood workforce
- Quantity of the early childhood workforce
- Quality of the teacher student interactions of the early childhood workforce



Federal Funds

EOEL receives federal funding for 1 FTE position, for the Head Start Collaboration Office Director.

Award # 09CD004093-04-00

This role provides support to enhance strategic partnerships between Hawai'i's six local grant recipients and state and community partners to ensure the Head Start voice is included in state-level planning, decision-making, and policy development.





Possible Impacts to the Early Learning System (Loss of federal funds)

- Decreased funding for Head Start Collaboration Office (HSCO) Director
 - POSSIBILITY: EOEL to look for funding to support the HSCO Director
- Decreased funding for Early Head Start (6 weeks - 2 years) and Head Start (3-5)
 - POSSIBILITY: All Head Start children and families are within the threshold for EOEL's priority categories
- Decreased funding for Early Childhood Special Education Services
 - IDEA Part C Early Intervention (DOH)
 - IDEA Part B (DOE)
- Decreased funding for Child Care Connections Subsidy (DHS)
 - POSSIBILITY: Preschool Open Doors Subsidy



Non-General Funds

Hawaii Dental Service (HDS) Foundation Grant

- \$2,700 project funds
- 470 Toothbrushes
- 300 Regular-sized toothpastes

EOEL applied to the HDS Foundation grant and received materials for families and translated information into multiple languages.

Toothbrush kits distributed through outreach, and translated materials distributed electronically and through outreach.





EOEL Public Prekindergarten Program

Thanks to the Legislature's continued commitment:

- Now serves 3- and 4-year-olds
- EOEL opened 11 new classrooms in SY 2023-24
 - 48 EOEL Public pre-K classrooms
 - 45 HIDOE campuses
- EOEL opened 44 new classrooms in SY 2024-25
 - 92 EOEL Public pre-K classrooms
 - 74 HIDOE campuses





Executive
Office on
Early
Learning
STATE OF HAWAII

Process Used to Develop Budget and Prioritize Requests

❖ ACT 46, SLH 2020

- Access and opportunity challenges across the islands
- Sites that have the space capacity to accommodate an EOEL room renovation
- Sites that have supportive leadership
- Sites with identified needs
 - Schools with early childhood special education rooms on campus and no general education rooms
 - Schools that have English Language learners
 - Schools that have children in foster care
 - Schools with children experiencing unstable housing
 - Schools with families with incomes below 300% of the federal poverty level



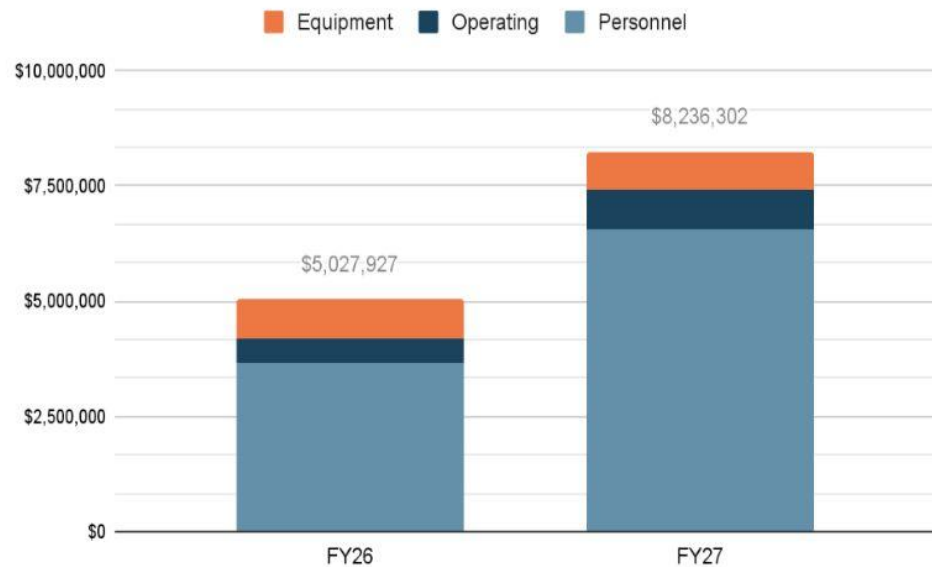
FB 2025-27 Budget Request

FY26 and FY27 Budget Requests

EOEL Public Prekindergarten (PreK) Program Expansion

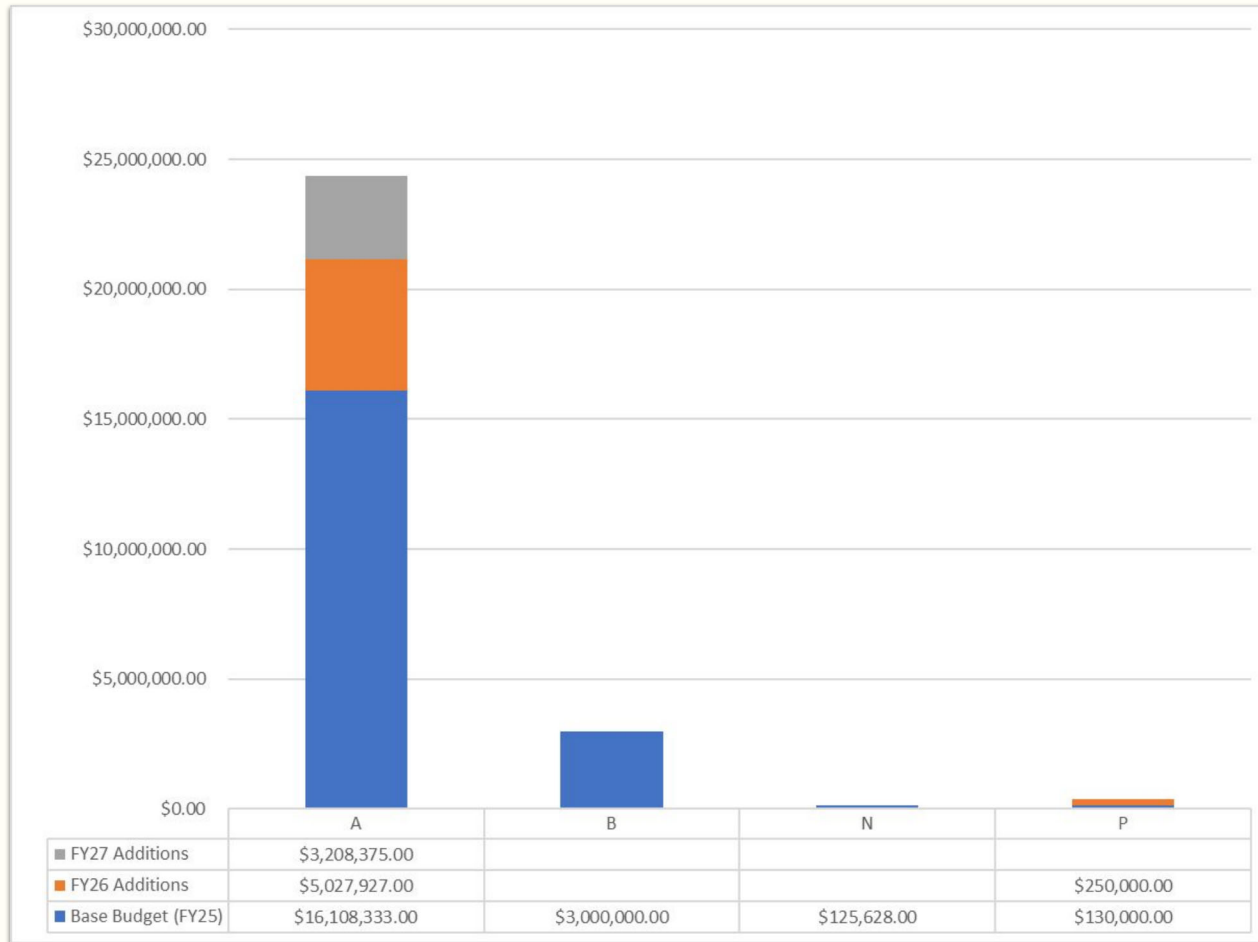
- 25 additional classrooms to be added in FY26; another 25 additional classrooms to be added in FY27 (Total of 50 additional classrooms to be added by start of School Year (SY) 27-28)
- 50 FTEs - PreK Personnel (25 PreK Teachers; 25 PreK Educational Assistants (EAs)) (added per FY) (Total of 100 FTEs added to PreK Personnel over 2 year Fiscal Biennium (FB))
- 8 FTEs - EOEL State Office Teachers
- Furniture
- Operational Costs
- Induction Costs

PreK Expansion Budget Requests



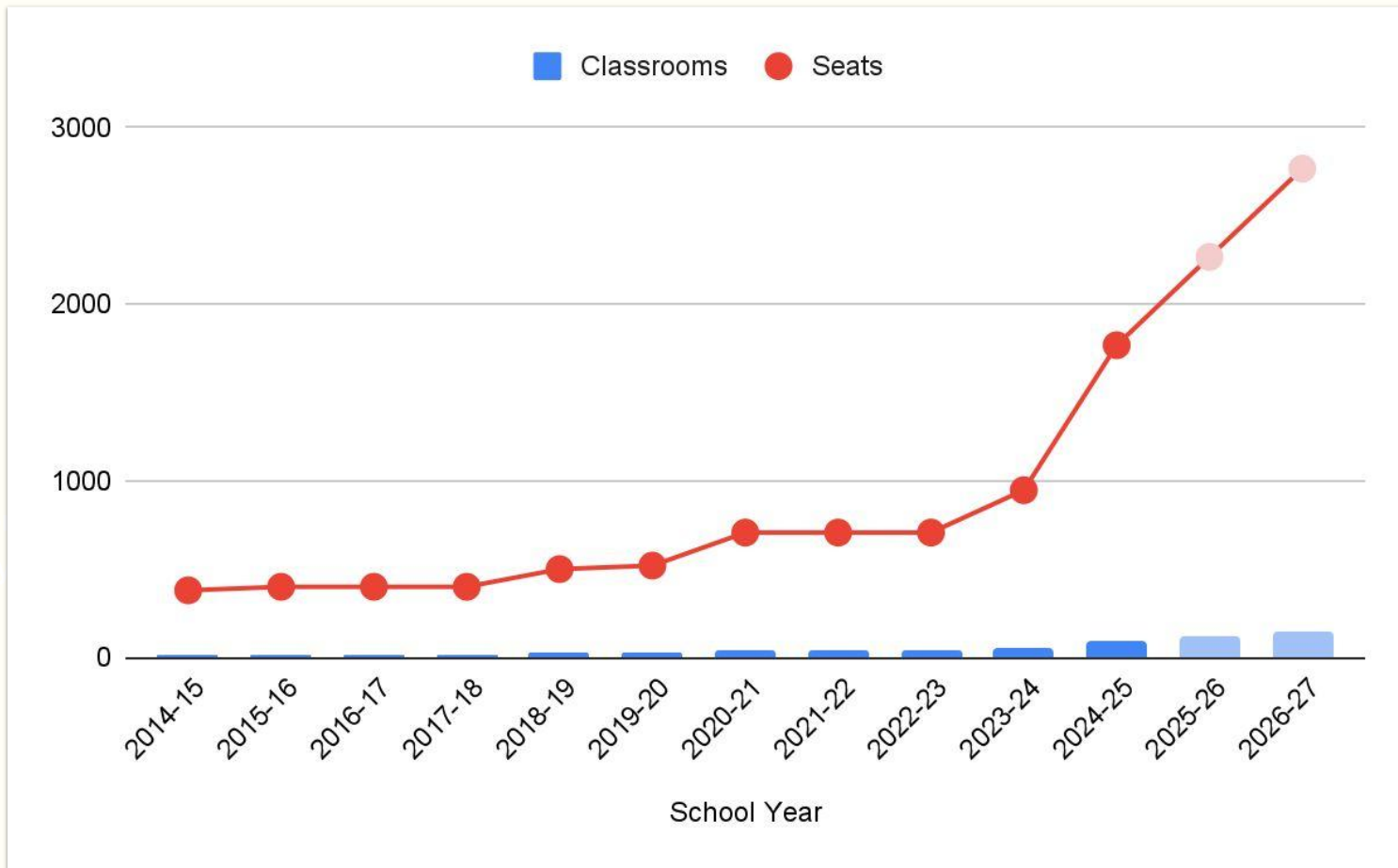


FB 2025-27 Budget Request





EOEL Public PreK Classrooms





Mahalo
for making a difference
by investing
in early learning



<u>Division</u>	<u>Description of Function</u>	<u>Activities</u>	<u>Prog ID(s)</u>	<u>Dept-Wide Priority</u>	<u>Statutory Reference</u>
EOEL	Administer Executive Office on Early Learning Public Prekindergarten Program, serving 4-year-old children, targeting at-risk and disadvantaged populations.	Administer the program through public pre-K classrooms on public school campuses throughout the state. Prepare children for school and active participation in society, and provide access to high-quality early childhood education.	EDN700	H	HRS §302L-7
EOEL	Coordinate development of the early learning system	Develop and implement methods to support our early care and education providers, teachers, and young children and their families. Increase access while maintaining high quality in early childhood development and learning programs. Assist providers in building continuity and coherence as children transition through early care and education programs and services. Coordinate efforts to develop a highly-qualified, stable, and diverse workforce (from HRS 302L-1.5(d)(8); State Plan BB4).	EDN700	H	HRS §302L-1.5; HRS §302L-2
EOEL	Administer the Hawaii early childhood educator stipend program.	Administer the Hawaii early childhood educator stipend program to address the shortage of early childhood educators who have coursework in early childhood education.	EDN700	H	HRS §302L-9
EOEL	Administer federal DHHS Head Start State Collaboration grant through implementation of the Hawaii Head Start State Collaboration Office (HHSSCO).	HHSSCO serves as a liaison between the federal Office of Head Start (OHS) and the OHS Region 9 office with the State of Hawaii, and between state government and the local Head Start and Early Head Start grantees. HHSSCO links Head Start/Early Head Start agencies with State and community partners to increase access to comprehensive services for eligible children ages birth to five and their families. Establishes new and/or enhances existing partnerships for increased coordination and collaboration for service delivery as well as to support quality enhancement. Brings the Head Start voice to planning and policy conversations in the State, and serves as point person for questions and data requests around Head Start in Hawaii.	EDN700	H	HRS §302L-1.5 (e)

Executive Office on Early Learning
Department-Wide Totals

Table 2

Fiscal Year 2026					
Budget Acts Appropriation	Reductions	Additions		Total FY26	MOF
\$ 16,108,333.00		\$ 5,027,927.00		\$ 21,136,260.00	A
\$ 3,000,000.00				\$ 3,000,000.00	B
\$ 125,628.00				\$ 125,628.00	N
\$ 130,000.00		\$ 250,000.00		\$ 380,000.00	P
				\$ -	
				\$ -	
\$ 19,363,961.00	\$ -	\$ 5,277,927.00	\$ -	\$ 24,641,888.00	Total
Fiscal Year 2027					
Budget Acts Appropriation	Reductions	Additions		Total FY27	MOF
\$ 16,108,333.00		\$ 8,236,302.00		\$ 24,344,635.00	A
\$ 3,000,000.00				\$ 3,000,000.00	B
\$ 125,628.00				\$ 125,628.00	N
\$ 130,000.00		\$ 250,000.00		\$ 380,000.00	P
				\$ -	
				\$ -	
\$ 19,363,961.00	\$ -	\$ 8,486,302.00	\$ -	\$ 27,850,263.00	Total

Executive Office on Early Learning
Program ID Totals

Table 3

Prog ID	Program Title	MOF	As budgeted (FY26)			As budgeted (FY27)			Governor's Submittal (FY26)				Governor's Submittal (FY27)			
			Pos (P)	Pos (T)	\$\$\$	Pos (P)	Pos (T)	\$\$\$	Pos (P)	Pos (T)	\$\$\$	Percent Change of \$\$\$\$	Pos (P)	Pos (T)	\$\$\$	Percent Change of \$\$\$\$
EDN700	Early Learning	A	223.00		\$ 16,108,333	223.00		\$ 16,108,333	281.00		\$ 21,136,260	31.21%	331.00		\$ 24,344,635	51.13%
EDN700	Early Learning	B			\$ 3,000,000			\$ 3,000,000			\$ 3,000,000	0.00%			\$ 3,000,000	0.00%
EDN700	Early Learning	N		1.00	\$ 125,628		1.00	\$ 125,628		1.00	\$ 125,628	0.00%		1.00	\$ 125,628	0.00%
EDN700	Early Learning	P		2.00	\$ 130,000		2.00	\$ 130,000		2.00	\$ 380,000	192.31%		2.00	\$ 380,000	192.31%

Prog ID	Sub-Org	Type of Request	Description of Request	MOF	Priority #	Initial Department Requests						Budget and Finance Recommendations						Governor's Decision					
						FY26			FY27			FY26			FY27			FY26			FY27		
						Pos (P)	Pos (T)	\$\$\$	Pos (P)	Pos (T)	\$\$\$	Pos (P)	Pos (T)	\$\$\$	Pos (P)	Pos (T)	\$\$\$	Pos (P)	Pos (T)	\$\$\$	Pos (P)	Pos (T)	\$\$\$
EDN700	PK		EOEL Public Pre Kindergarten Expansion	A	1	58.00		\$ 5,027,927	108.00		\$ 8,236,302							58.00		\$ 5,027,927	108.00		\$ 8,236,302
EDN700	PK		Family-Child Learning Interaction (FCIL) Program Expansion	A	2			\$ 800,000			\$ 800,000												
EDN700	PK	FA	B&F Adjustment - Increase federal fund ceiling for Preschool Development Grants Birth to Five (PDG B-5)	P										\$250,000		\$250,000			\$250,000			\$250,000	

<u>Prog ID</u>	<u>Sub-Org</u>	<u>Description of Reduction</u>	<u>Impact of Reduction</u>	<u>MOF</u>	<u>FY26</u>			<u>FY27</u>			<u>FY25 Restriction (Y/N)</u>
					<u>Pos (P)</u>	<u>Pos (T)</u>	<u>\$\$\$\$</u>	<u>Pos (P)</u>	<u>Pos (T)</u>	<u>\$\$\$\$</u>	
	N/A										

<u>Prog ID</u>	<u>Sub-Org</u>	<u>Addition Type</u>	<u>Prog ID Priority</u>	<u>Dept-Wide Priority</u>	<u>Description of Addition</u>	<u>Justification</u>	FY26				FY27		
							<u>MOF</u>	<u>Pos (P)</u>	<u>Pos (T)</u>	<u>\$\$\$</u>	<u>Pos (P)</u>	<u>Pos (T)</u>	<u>\$\$\$</u>
EDN700	PK	AR	1	1	EOEL Public Pre Kindergarten Expansion	This budget addition reflects opening 25 classrooms in SY25-26 and 25 classrooms in SY26-27. Pursuant to Chapter 302 L-7, HRS, EOEL Public Pre Kindergarten programs must have 1 teacher and 1 educational assistant in each classroom. The State Office Teachers provide ongoing professional learning support, including coaching, mentoring, classroom assistance, and consultation, to ensure the EOEL Public Pre Kindergarten program achieves its statutory obligation to implement a high-quality program and to enhance quality learning experiences for children. Associated with these positions include requests for software and licenses, that are necessary for the positions to fulfill their duties, and the annual cost for the EOEL's Public Pre Kindergarten online application platform.	A	58.00		\$ 5,027,927	108		\$ 8,236,302
EDN700	PK	FF	3	3	B&F Adjustment - Increase federal fund ceiling for Preschool Development Grants Birth to Five (PDG B-5)	The Department anticipates an increase in future grant awards (CFDA 93.434, PID B1165) which exceeds the current federal fund ceiling. The requested ceiling is needed to expend the additional funding.	P			\$ 250,000			\$ 250,000

<u>Fiscal Year</u>	<u>Prog ID</u>	<u>Sub-Org</u>	<u>MOF</u>	<u>Budgeted by Dept</u>	<u>Restriction</u>	<u>Difference Between Budgeted & Restricted</u>	<u>Percent Difference</u>	<u>Impact</u>
					N/A			

<u>Prog ID</u>	<u>Description of Request</u>	<u>Explanation of Request</u>	<u>MOF</u>	<u>Pos (P)</u>	<u>Pos (T)</u>	<u>\$\$\$</u>
	None					

Executive Office on Early Learning
 Expenditures Exceeding Appropriation Ceilings in FY24 and FY25

<u>Prog ID</u>	<u>MOF</u>	<u>Date</u>	<u>Appropriation</u>	<u>Amount Exceeding Appropriation</u>	<u>Percent Exceeded</u>	<u>Reason for Exceeding Ceiling</u>	<u>Legal Authority</u>	<u>Recurring (Y/N)</u>	<u>GF Impact (Y/N)</u>
			N/A						

Executive Office on Early Learning
 Intradepartmental Transfers in FY24 and FY25

Table 10

<u>Actual or Anticipated</u>						<u>Percent of Program ID</u>		<u>Percent of Receiving</u>		
<u>Date of Transfer</u>	<u>MOF</u>	<u>Pos (P)</u>	<u>Pos (T)</u>	<u>\$\$\$</u>	<u>From Prog ID</u>	<u>Appropriation Transferred From</u>	<u>To Prog ID</u>	<u>Program ID Appropriation</u>	<u>Reason for Transfer</u>	<u>Recurring (Y/N)</u>
N/A										

Prog ID	Sub-Org	Date of Vacancy	Expected Fill Date	Position Number	Position Title	Exempt (Y/N)	SR Level	BU Code	Perm Temp (P/T)	FTE	MOF	Budgeted Amount	Actual Salary Last Paid	Authority to Hire (Y/N)	Occupied by 89-Day Hire (Y/N)	# of 89 Hire Appts	Describe if Filled by other Means	Priority # to Retain
EDN700	PK	10/1/2024		804722	Educ Asst III	Y	SR14	3	P	1.00	A	\$ 38,644	\$ 40,248	Y	Y		89-Day Appointment	1
EDN700	PK	11/18/2024	12/2/2024	604463	Educational Spec II	Certificated	3E07	6	P	1.00	A	\$ 113,240	\$ 111,674	Y	N		Filled	3
EDN700	PK	9/21/2023	12/2/2024	804185	Office Assistant IV	N	SR10	3	P	1.00	A	\$ 40,244	\$ 40,248	Y	Y		Filled	2
EDN700	PK	9/23/2023	1/6/2025	804723	Educ Asst III	Y	SR14	3	P	1.00	A	\$ 39,343	\$ 36,795	Y	N		Position Filled by TA, Sub, or Casual	1
EDN700	PK	7/31/2024	1/6/2025	805712	Educ Asst III	Y	SR14	3	P	1.00	A	\$ 39,343		Y	N		Position Filled by TA, Sub, or Casual	1
EDN700	PK	8/20/2024	1/7/2025	601959	Pre-Sch Tchr	Certificated	T02	5	P	1.00	A	\$ 79,606	\$ 77,519	Y	N		Position Filled by TA, Sub, or Casual	1
EDN700	PK	11/1/2023	1/15/2025	605610	Educational Spec II	Certificated	3E07	6	P	1.00	A	\$ 111,674		Y	N			4
EDN700	PK	8/21/2023	1/15/2025	605619	12-Mo State Off Tchr	Certificated	TM02	5	P	1.00	A	\$ 65,836		Y	N			7
EDN700	PK	7/1/2024	1/15/2025	605624	12-Mo State Off Tchr	Certificated	TM02	5	P	1.00	A	\$ 65,836		Y	N			8
EDN700	PK	7/1/2024	1/15/2025	605625	12-Mo State Off Tchr	Certificated	TM02	5	P	1.00	A	\$ 65,836		Y	N			9
EDN700	PK	7/1/2024	1/15/2025	605630	12-Mo State Off Tchr	Certificated	TM02	5	P	1.00	A	\$ 65,836		Y	N			10
EDN700	PK	7/1/2024	1/15/2025	605631	12-Mo State Off Tchr	Certificated	TM02	5	P	1.00	A	\$ 65,836		Y	N			11
EDN700	PK	7/1/2024	1/15/2025	605632	12-Mo State Off Tchr	Certificated	TM02	5	P	1.00	A	\$ 65,836		Y	N			12
EDN700	PK	7/1/2023	1/27/2025	802325	Educ Asst III	Y	SR14	3	P	1.00	A	\$ 39,343	\$ 34,362	Y	N			1
EDN700	PK	12/30/2023	1/15/2025	804411	Secretary II	N	SR14	3	P	1.00	A	\$ 40,131	\$ 58,932	Y	N			5
EDN700	PK	8/1/2023	1/6/2025	804717	Educ Asst III	Y	SR14	3	P	1.00	A	\$ 39,343	\$ 36,007	Y	N			1
EDN700	PK	8/1/2023	3/31/2025	804732	Educ Asst III	Y	SR14	3	P	1.00	A	\$ 39,343	\$ 36,007	Y	N			1
EDN700	PK	7/29/2021	5/30/2025	804733	Educ Asst III	Y	SR14	3	P	1.00	A	\$ 39,343	\$ 33,063	Y	N			1
EDN700	PK	7/30/2024	5/30/2025	804738	Educ Asst III	Y	SR14	3	P	1.00	A	\$ 39,264	\$ 37,469	Y	N			1
EDN700	PK	10/14/2023	5/30/2025	804740	Educ Asst III	Y	SR14	3	P	1.00	A	\$ 39,343	\$ 33,345	Y	N		Position Filled by TA, Sub, or Casual	1
EDN700	PK	7/21/2023	5/30/2025	804743	Educ Asst III	Y	SR14	3	P	1.00	A	\$ 39,343	\$ 37,469	Y	N		Position Filled by TA, Sub, or Casual	1
EDN700	PK	5/28/2022	2/24/2025	804748	Educ Asst III	Y	SR14	3	P	1.00	A	\$ 39,343	\$ 33,063	Y	N		Position Filled by TA, Sub, or Casual	1
EDN700	PK	7/31/2024		805681	Educ Asst III	Y	SR14	3	P	1.00	A	\$ 39,343		Y	N		Position Filled by TA, Sub, or Casual	1
EDN700	PK	7/31/2024	1/27/2025	805711	Educ Asst III	Y	SR14	3	P	1.00	A	\$ 39,343		Y	N			1
EDN700	PK	3/1/2024	1/15/2025	805894	Prgm Spclt IV	N	SR22	13	P	1.00	A	\$ 63,099		Y	N			6

Positions Filled and/or Established by Acts other than the State Budget as of November 30, 2024

<u>Prog ID</u>	<u>Sub-Org</u>	<u>Date Established</u>	<u>Legal Authority</u>	<u>Position Number</u>	<u>Position Title</u>	<u>Exempt (Y/N)</u>	<u>SR Level</u>	<u>BU Code</u>	<u>T/P</u>	<u>MOF</u>	<u>FTE</u>	<u>Annual Salary</u>	<u>Filled (Y/N)</u>	<u>Occupied by 89 Day Hire (Y/N)</u>
		N/A												

Executive Office on Early Learning
Overtime Expenditure Summary

Table 13

<u>Prog ID</u>	<u>Sub-Org</u>	<u>Program Title</u>	<u>MOF</u>	<u>FY24 (actual)</u>			<u>FY25 (estimated)</u>			<u>FY26 (budgeted)</u>		
				<u>Base Salary</u> \$\$\$\$	<u>Overtime</u> \$\$\$\$	<u>Overtime</u> Percent	<u>Base Salary</u> \$\$\$\$	<u>Overtime</u> \$\$\$\$	<u>Overtime</u> Percent	<u>Base Salary</u> \$\$\$\$	<u>Overtime</u> \$\$\$\$	<u>Overtime</u> Percent
		N/A										

Prog ID	MOF	Amount	Frequency (M/A/O)	Max Value	Outstanding Balance	Date Executed	Term of Contract		Entity	Contract Description	Explanation of How Contract is Monitored	POS Y/N	Category E/L/P/C/G/S/*
							From	To					
EDN700	A	\$ 80,000	O - 5 payments (1 upon contract execution, 4 quarterly)	\$ 400,000	\$ 320,000	6/3/2024	7/1/2024	6/30/2025	Partners in Development Foundation	Provision of Family-Child Interaction Learning (FCIL) Program for the Executive Office on Early Learning (EOEL) at Nanakuli Elementary School and Kailua Elementary School	Quarterly Reports	Y	S
EDN700	A, T	\$ 1,600,000	A	\$ 1,600,000	\$0	6/16/2022	6/16/2022	6/30/2025	University of Hawaii	UH Early Childhood Stipend Program	Bimonthly Meetings	Y	S

Executive Office on Early Learning
 Capital Improvements Program (CIP) Requests

Table 15

<u>Prog ID</u>	<u>Prog ID</u> <u>Priority</u>	<u>Dept-</u> <u>Wide</u> <u>Priority</u>	<u>Senate</u> <u>District</u>	<u>Rep.</u> <u>District</u>	<u>Project Title</u>	<u>MOF</u>	<u>FY26 \$\$\$</u>	<u>FY27 \$\$\$</u>
					N/A			

Executive Office on Early Learning
CIP Lapses

Table 16

<u>Prog ID</u>	<u>Act/Year of Appropriation</u>	<u>Project Title</u>	<u>MOF</u>	<u>Lapse Amount \$\$\$\$</u>	<u>Reason</u>
		N/A			

Executive Office on Early Learning
 Program ID Sub-Organizations

Table 17

Program ID	Sub-Org Code	Name	Objective
EDN700	PK	Early Learning	To ensure that all children eligible for preschool have access to high-quality early learning opportunities through the provision of direct educational services and the enhancement of the quality of and access to those service

Executive Office on Early Learning
Organization Chart and Changes

Table 18

Online link (url):	https://www.hawaiipublicschools.org/DOE%20Forms/DOE%20Form/Plan%20of%20Organization.pdf
<u>Year of Change</u> FY26/FY27	<u>Description of Change</u>
FY24	Current Organizational Chart (will be updated with DOE Plan of Organization new version)

<u>Prog ID</u>	<u>Fiscal Impact</u>	<u>Amount Requested</u>	<u>FTE Requested</u>	<u>Budget for Personnel</u>	<u>Budget for OCE (Other Than Contracts)</u>	<u>Budget for Contracts</u>	<u>Dates of Initiative</u>		<u>Initiative Description</u>	<u>Is This A New Initiative Or An Enhancement To An Existing Initiative/Program</u>	<u>Plan for continuation of initiative (if applicable)</u>
							<u>From</u>	<u>To</u>			
	N/A										

<u>Prog ID</u>	<u>Appropriating Act</u>	<u>Amount Allotted</u>	<u>FTE Allotted</u>	<u>Budget for Personnel</u>	<u>Budget for OCE (Other Than Contracts)</u>	<u>Budget for Contracts</u>	<u>Dates of Initiative</u>		<u>Initiative Description</u>	<u>Is This A New Initiative Or An Enhancement To An Existing Initiative/Program</u>	<u>Plan for continuation of initiative (if applicable)</u>
							<u>From</u>	<u>To</u>			
	N/A										

Positions that are being paid higher than the salaries authorized as of November 30, 2024

<u>Prog ID</u>	<u>Sub-Org</u>	<u>Position Number</u>	<u>Position Title</u>	<u>Exempt (Y/N)</u>	<u>SR Level</u>	<u>BU Code</u>	<u>T/P</u>	<u>MOF</u>	<u>FTE</u>	<u>Budgeted Amount</u>	<u>Actual Salary Last Paid</u>	<u>Occupied by 89-Day Hire (Y/N)</u>	<u>Legal Authority for Salary Increase</u>	<u>Source of Funding (cost element and ProgID)</u>	<u>Date of Approval</u>	<u>Person who approved salary increase</u>
EDN700	PK	120361	Director	Y	SRNA	00	P	A	1.00	\$ 132,613	\$ 141,145	N	HRS §302L-1.5 (5)	EDN700/A	11/14/24	ELB

Prog ID	Sub-Org	Position Number	Position Title	Exempt (Y/N)	SR Level	BU Code	T/P	MOF	FTE	Budgeted Amount	Actual Salary Last Paid	Occupied by 89-Day Hire (Y/N)	Telework Designation (full time or hybrid)	Number of Telework Days a Week	Reason for Telework	Process to Evaluate Job Performance
EDN700	PK	803655	Prgm Spclt IV	N	13/SR24	13	P	A	1	\$ 63,099	\$ 65,664	N	Full Time	5	At EOEL, telework is defined as choosing to work someplace other than the assigned office and not due to a meeting, function, or assignment at another location. Reasons for telework in EOEL include early morning meetings (mostly national convenings), the time between virtual to in-person or in-person to virtual meetings doesn't permit ample time for safe driving to/from the office, efficiency of time, physically compromised yet still able to work from home, meetings for which the office offers no privacy, a need to focus without distractions, etc.)	Forms must be completed for days teleworked by employees who consistently telework and those who telework occasionally. Intermittent telework must be approved by Yuuko. Forms must indicate work accomplished vs broad general statements. (Ex. Created documents for ____ and sent via email vs checked email.). Form is due by COB each Monday for telework completed in the week prior.
EDN700	PK	805781	Administrative Services Asst	N	13/SR22	13	P	A	1	\$ 63,099	\$ 63,096	N	Hybrid	0-2	At EOEL, telework is defined as choosing to work someplace other than the assigned office and not due to a meeting, function, or assignment at another location. Reasons for telework in EOEL include early morning meetings (mostly national convenings), the time between virtual to in-person or in-person to virtual meetings doesn't permit ample time for safe driving to/from the office, efficiency of time, physically compromised yet still able to work from home, meetings for which the office offers no privacy, a need to focus without distractions, etc.)	Forms must be completed for days teleworked by employees who consistently telework and those who telework occasionally. Intermittent telework must be approved by Yuuko. Forms must indicate work accomplished vs broad general statements. (Ex. Created documents for ____ and sent via email vs checked email.). Form is due by COB each Monday for telework completed in the week prior.
EDN700	PK	603740	Instit Analyst II	N	EO	6	P	A	1	\$ 111,674	\$ 111,674	N	Hybrid	0-2	At EOEL, telework is defined as choosing to work someplace other than the assigned office and not due to a meeting, function, or assignment at another location. Reasons for telework in EOEL include early morning meetings (mostly national convenings), the time between virtual to in-person or in-person to virtual meetings doesn't permit ample time for safe driving to/from the office, efficiency of time, physically compromised yet still able to work from home, meetings for which the office offers no privacy, a need to focus without distractions, etc.)	Forms must be completed for days teleworked by employees who consistently telework and those who telework occasionally. Intermittent telework must be approved by Yuuko. Forms must indicate work accomplished vs broad general statements. (Ex. Created documents for ____ and sent via email vs checked email.). Form is due by COB each Monday for telework completed in the week prior.
EDN700	PK	604887	Educational Spec II	N	EO	6	P	A	1	\$ 111,674	\$ 111,674	N	Hybrid	0-2	At EOEL, telework is defined as choosing to work someplace other than the assigned office and not due to a meeting, function, or assignment at another location. Reasons for telework in EOEL include early morning meetings (mostly national convenings), the time between virtual to in-person or in-person to virtual meetings doesn't permit ample time for safe driving to/from the office, efficiency of time, physically compromised yet still able to work from home, meetings for which the office offers no privacy, a need to focus without distractions, etc.)	Forms must be completed for days teleworked by employees who consistently telework and those who telework occasionally. Intermittent telework must be approved by Yuuko. Forms must indicate work accomplished vs broad general statements. (Ex. Created documents for ____ and sent via email vs checked email.). Form is due by COB each Monday for telework completed in the week prior.

Prog ID	Sub-Org	Position Number	Position Title	Exempt (Y/N)	SR Level	BU Code	T/P	MOF	FTE	Budgeted Amount	Actual Salary Last Paid	Occupied by 89-Day Hire (Y/N)	Telework Designation (full time or hybrid)	Number of Telework Days a Week	Reason for Telework	Process to Evaluate Job Performance
EDN700	PK	120361	EOEL Director	Y	n/a	n/a	P	A	1	\$ 125,000	\$ 125,000	N	Hybrid	Situational	At EOEL, telework is defined as choosing to work someplace other than the assigned office and not due to a meeting, function, or assignment at another location. Reasons for telework in EOEL include early morning meetings (mostly national convenings), the time between virtual to in-person or in-person to virtual meetings doesn't permit ample time for safe driving to/from the office, efficiency of time, physically compromised yet still able to work from home, meetings for which the office offers no privacy, a need to focus without distractions, etc.)	Forms must be completed for days teleworked by employees who consistently telework and those who telework occasionally. Intermittent telework must be approved by Yuuko. Forms must indicate work accomplished vs broad general statements. (Ex. Created documents for ____ and sent via email vs checked email.). Form is due by COB each Monday for telework completed in the week prior.
EDN700	PK	2E+07	Comm Spec II	Y	n/a	56	P	A	1	\$ 111,674	\$ 111,674	N	Hybrid	Situational	At EOEL, telework is defined as choosing to work someplace other than the assigned office and not due to a meeting, function, or assignment at another location. Reasons for telework in EOEL include early morning meetings (mostly national convenings), the time between virtual to in-person or in-person to virtual meetings doesn't permit ample time for safe driving to/from the office, efficiency of time, physically compromised yet still able to work from home, meetings for which the office offers no privacy, a need to focus without distractions, etc.)	Forms must be completed for days teleworked by employees who consistently telework and those who telework occasionally. Intermittent telework must be approved by Yuuko. Forms must indicate work accomplished vs broad general statements. (Ex. Created documents for ____ and sent via email vs checked email.). Form is due by COB each Monday for telework completed in the week prior.
EDN700	PK	805780	Business Mgmt Officer I	Y	n/a	35	P	A	1	\$ 109,704	\$ 109,704	N	Full Time	5	At EOEL, telework is defined as choosing to work someplace other than the assigned office and not due to a meeting, function, or assignment at another location. Reasons for telework in EOEL include early morning meetings (mostly national convenings), the time between virtual to in-person or in-person to virtual meetings doesn't permit ample time for safe driving to/from the office, efficiency of time, physically compromised yet still able to work from home, meetings for which the office offers no privacy, a need to focus without distractions, etc.)	Forms must be completed for days teleworked by employees who consistently telework and those who telework occasionally. Intermittent telework must be approved by Yuuko. Forms must indicate work accomplished vs broad general statements. (Ex. Created documents for ____ and sent via email vs checked email.). Form is due by COB each Monday for telework completed in the week prior.

Prog ID	Sub-Org	Position Number	Job Title	Start Date	End Date	Justification for Travel	Full Agenda Y/N?	Meetings Attended Y/N?	Training Sessions Y/N?	Total Cost of Trip	Cost Paid by	Final Report of Travel Y/N?
											State or Other Entity?	
EDN700	PK	120361	Director	02/17/24	02/17/24	Kaua'i ECE Conference - Kaua'i	Y	Y	Y	\$223	State	Y
EDN700	PK	120361	Director	05/05/24	05/10/24	ECEPTS National Conference - Sacramento, CA	Y	Y	Y	\$2,673	State	Y
EDN700	PK	120361	Director	06/11/24	06/12/24	EOEL Hawaiian Language Program Retreat - Hawai'i	Y	Y	Y	\$184	State	Y
EDN700	PK	120361	Director	07/30/24	08/02/24	Zero to Three Conference - Long Beach, CA	Y	Y	Y	\$2,261	State	Y
EDN700	PK	120361	Director	09/19/24	09/19/24	Council for Hawaiian Native Advancement Conference - Hawai'i	Y	Y	Y	\$314	State	Y
EDN700	PK	120361	Director	09/03/24	09/06/24	Hunt Institute Early Childhood Leadership Summit - Las Vegas, NV	Y	Y	Y	\$209	Other	Y
EDN700	PK	120361	Director	09/09/24	09/10/24	Migrant Farm Worker Outreach, Ready Keiki backpack distribution - Moloka'i	Y	Y	N	\$468	State	Y
EDN700	PK	120361	Director	10/14/24	10/14/24	EOEL PreK Classroom Visits - Hawai'i	N	Y	N	\$357	State	Y
EDN700	PK	120361	Director	11/22/24	11/22/24	Migrant Farm Worker Outreach - Hawai'i	Y	Y	N	\$236	State	Y
EDN700	PK	603740	Institutional Analyst II	04/27/24	04/27/24	Moloka'i Keiki Event - Moloka'i	Y	Y	N	\$377	State	Y
EDN700	PK	603740	Institutional Analyst II	08/29/24	08/29/24	Early Childhood & Health Summit - Maui	Y	Y	Y	\$142	State	Y
EDN700	PK	603740	Institutional Analyst II	06/11/24	06/12/24	EOEL Hawaiian Language Program Retreat - Hawai'i	Y	Y	Y	\$293	State	Y
EDN700	PK	603740	Institutional Analyst II	09/09/24	09/10/24	Migrant Farm Worker Outreach, Ready Keiki backpack distribution - Moloka'i	Y	Y	N	\$711	State	Y
EDN700	PK	603740	Institutional Analyst II	10/07/24	10/08/24	Admissions & Resource Center roadshow - Kaua'i	Y	Y	N	\$717	State	Y
EDN700	PK	603721	Communications Specialist II	04/27/24	04/27/24	Moloka'i Keiki Event - Moloka'i	Y	Y	N	\$337	State	Y
EDN700	PK	603721	Communications Specialist II	09/04/24	09/07/24	3CMA National Conference - Arlington, TX	Y	Y	Y	\$2,607	State	Y
EDN700	PK	603721	Communications Specialist II	09/10/24	09/11/24	Ready Keiki backpack distribution - Moloka'i	Y	Y	N	\$268	State	Y
EDN700	PK	603721	Communications Specialist II	10/07/24	10/08/24	Admissions & Resource Center roadshow - Kaua'i	Y	Y	N	\$673	State	Y
EDN700	PK	603721	Communications Specialist II	10/14/24	10/14/24	EOEL PreK Classroom Visits - Hawai'i	N	Y	N	\$222	State	Y
EDN700	PK	604887	Educational Specialist II	05/05/24	05/10/24	ECEPTS National Conference - Sacramento, CA	Y	Y	Y	\$2,570	State	Y
EDN700	PK	604887	Educational Specialist II	08/05/24	08/08/24	QIS Summit - Minneapolis, MN	Y	Y	Y	\$2,517	State	Y
EDN700	PK	604887	Educational Specialist II	06/11/24	06/12/24	EOEL Hawaiian Language Program Retreat - Hawai'i	Y	Y	Y	\$245	State	Y
EDN700	PK	604882	Institutional Analyst II	06/12/24	06/13/24	EOEL Hawaiian Language Program Retreat - Hawai'i	Y	Y	Y	\$184	State	Y
EDN700	PK	803613	Research Statistician IV	08/29/24	08/29/24	Onboarding/Training - O'ahu	N	Y	N	\$275	State	Y
EDN700	PK	803655	Program Specialist V	08/29/24	08/29/24	Early Childhood & Health Summit - Maui	Y	Y	Y	\$15	State	Y
EDN700	PK	803655	Program Specialist V	10/31/24	10/31/24	CLASS Observation for EOEL Kaiapuni Classroom - Lana'i	Y	Y	N	\$350	State	Y
EDN700	PK	803655	Program Specialist V	11/15/24	11/15/24	CLASS Observation for EOEL PreK Classroom - Kaua'i	Y	Y	N	\$20	State	Y
EDN700	PK	603817	Educational Specialist III	05/31/24	06/06/24	NAEYC Conference - New Orleans, LA	Y	Y	Y	\$3,716	State	Y
EDN700	PK	601865	12-Mo State Office Teacher	05/31/24	06/06/24	NAEYC Conference - New Orleans, LA	Y	Y	Y	\$3,691	State	Y
EDN700	PK	601866	12-Mo State Office Teacher	05/31/24	06/06/24	NAEYC Conference - New Orleans, LA	Y	Y	Y	\$3,726	State	Y
EDN700	PK	601864	12-Mo State Office Teacher	05/31/24	06/06/24	NAEYC Conference - New Orleans, LA	Y	Y	Y	\$3,726	State	Y
		601862, 601861, 601863, 601865, 605621, 605617, 605634, 601866, 605616, 601864,										
EDN700	PK	603817	State Office Teachers and Educational Specialists	01/01/24	11/30/24	Total Travel Expenses for Inter-Island travel for EOEL Pre-K Program Professional Development, Coaching/Mentoring, and Class Observations.	Y	Y	Y	\$53,940	State	Y

<u>Prog ID</u>	<u>Sub-Org</u>	<u>Position Number</u>	<u>Job Title</u>	<u>Start Date</u>	<u>End Date</u>	<u>Justification for Travel</u>	<u>Full Agenda Y/N?</u>	<u>Meetings Attended Y/N?</u>	<u>Training Sessions Y/N?</u>	<u>Total Cost of Trip</u>	<u>Cost Paid by State or Other Entity?</u>	<u>Final Report of Travel Y/N?</u>
EDN700	PK	Various	PreK Teachers and School Administrators	01/01/24	11/30/24	Total Travel Expenses for Inter-Island travel for Teachers and School Administrators with EOEL Pre-K Program for EOEL-hosted Professional Development.	Y	Y	Y	\$37,624	State	Y

<u>Prog ID</u>	<u>Sub-Org</u>	<u>Description of Expenditure/Encumbrance</u>	<u>Justification</u>	<u>Existing Budgeted Item(s) affected (If Any)</u>	<u>MOF</u>	<u>FY25</u>		<u>FY26</u>		<u>FEMA Reimbursable?</u>	<u>Reimbursement Applied for?</u>
						<u>Encumbrance Balance</u>	<u>Expenditure</u>	<u>Encumbrance Balance</u>	<u>Expenditure</u>		
		N/A									

<u>Prog ID</u>	<u>Sub-Org</u>	<u>Positions dispersed for Wildfire Reponse</u>	<u>Justification</u>	<u>MOF</u>	<u>FY25</u>				<u>FY26</u>				<u>Expected End Date</u>	<u>FEMA Eligible?</u>	<u>FEMA Reimb App?</u>
					<u>Pos (P)</u>	<u>Pos (T)</u>	<u>Payroll Hours</u>	<u>\$\$\$</u>	<u>Pos (P)</u>	<u>Pos (T)</u>	<u>Payroll Hours</u>	<u>\$\$\$</u>			
		N/A													

**Report on Non-General Fund Information
for Submittal to the 2025 Legislature**

Department: EDN
 Program ID(s): EDN 700
 Name of Fund: Federal Funds - EDN 700
 Legal Authority: Head Start Act

Contact Name: Yuuko Arikawa-Cross
 Phone Number: 808-784-5350
 Fund Type (MOF): Federal (N)
 Appropriation Account Number: S-270-E

Intended Purpose:

The purpose of the Hawaii Head Start State Collaboration grant is to facilitate collaboration between Head Start agencies and entities that serve low-income children (birth to school

Source of Revenues:

Office of Head Start, DHHS

Current Program Activities/Allowable Expenses:

To provide information, convene or attend meetings, and establish connections on behalf of the Head Start and Early Head Start grantees with State entities and child care

Variances:

Negative cash balances may result from encumbrances not getting paid due to timing of the grant drawdown. Variance between FY 2024 and FY 2025 due to anticipating revenue

Cash balance lapse to general fund? No
Statutory language: N/A

Financial Data							
	FY 2021	FY 2022	FY 2023	FY 2024	FY 2025	FY 2026	FY 2027
	(actual)	(actual)	(actual)	(actual)	(estimated)	(estimated)	(estimated)
Appropriation Ceiling	125,628	125,628	125,628			125,628	125,628
Beginning Cash Balance	(10,377)	(8,668)	(10,880)	(27,351)	-	-	-
Revenues	133,285	105,648	92,519	41,363	125,000	125,000	125,000
Expenditures	131,576	107,860	108,990	14,013	125,000	125,000	125,000
Transfers							
List each net transfer in/out or projection in/out; list each account number							
Rounding/misc adjustment				1			
Net Total Transfers	-	-	-	1	-	-	-
Ending Cash Balance	(8,668)	(10,880)	(27,351)	-	-	-	-
Encumbrances	127	1	2,143	-	-	-	-
Unencumbered Cash Balance	(8,795)	(10,881)	(29,494)	-	-	-	-

Additional Information:

Amount Requested by Bond Covenants							
Amount from Bond Proceeds							
Amount Held in CODs, Escrow Accounts, or Other Investments							

**Report on Non-General Fund Information
for Submittal to the 2025 Legislature**

Department: EDN
 Program ID(s): EDN 700
 Name of Fund: Early Learning Special Fund
 Legal Authority: Section 302L-5, HRS

Contact Name: Yuuko Arikawa-Cross
 Phone Number: 808-784-5350
 Fund Type (MOF): Special
 Appropriation Account Number: S-357-E

Intended Purpose:

Moneys will be used for the early learning system, pursuant to Act 46, Session Laws of Hawaii 2020.

Source of Revenues:

Revenues include fees, grants, donations, appropriations from the Legislature, and revenues regardless of source.

Current Program Activities/Allowable Expenses:

Moneys will be used for the early learning system.

Variances:

New grant deposited in June 2024, previously no funds in special fund. Variance in Expenditures from FY 2024 to FY 2025 due to first time spending anticipated for Early Learning

Cash balance lapse to general fund? No

Statutory language: N/A

Financial Data							
	FY 2021	FY 2022	FY 2023	FY 2024	FY 2025	FY 2026	FY 2027
	(actual)	(actual)	(actual)	(actual)	(estimated)	(estimated)	(estimated)
Appropriation Ceiling	n/a	n/a	n/a				
Beginning Cash Balance	n/a	-	-	-	2,700	NO DATA	NO DATA
Revenues	n/a	-	NO DATA	2,700	NO DATA	NO DATA	NO DATA
Expenditures	n/a	-	NO DATA	NO DATA	2,700	NO DATA	NO DATA
Transfers							
List each net transfer in/out or projection in/out; list each account number							
Rounding/misc adjustment							
Net Total Transfers		-	-	-	-	-	-
Ending Cash Balance	n/a	-	NO DATA	2,700	NO DATA	NO DATA	NO DATA
Encumbrances		-	NO DATA	-	-	-	-
Unencumbered Cash Balance	n/a	-	NO DATA	2,700	NO DATA	NO DATA	NO DATA

Additional Information:

Amount Requested by Bond Covenants							
Amount from Bond Proceeds							
Amount Held in CODs, Escrow Accounts, or Other Investments							